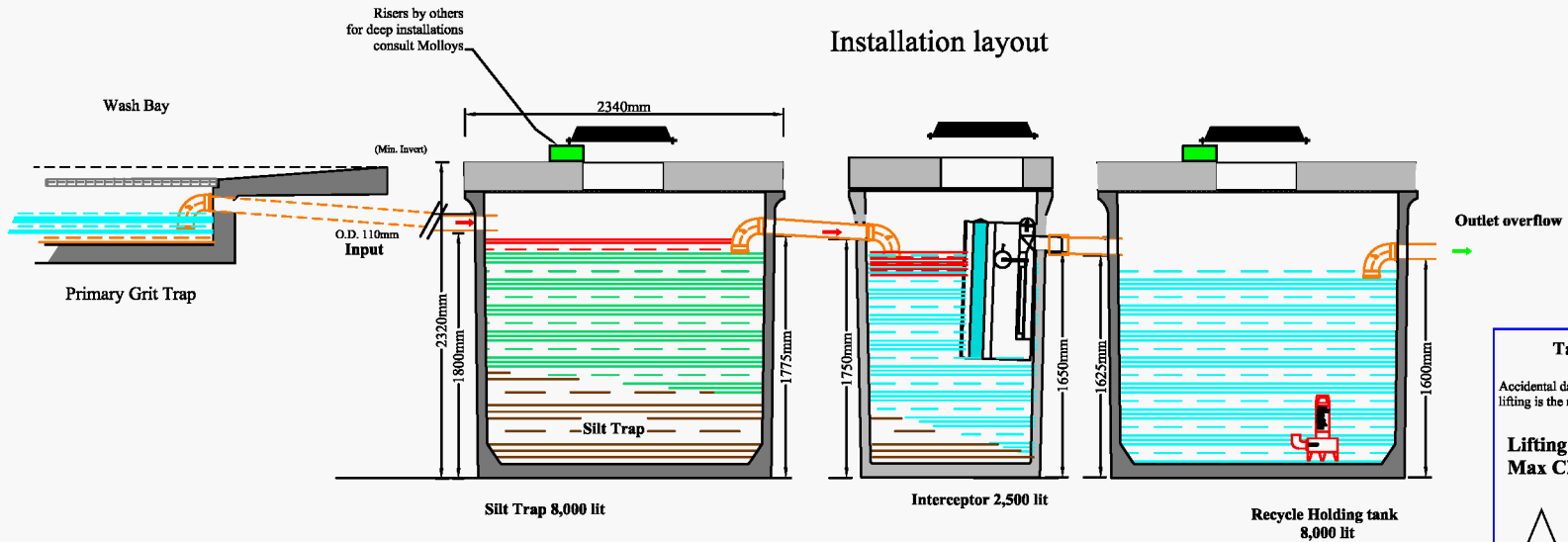
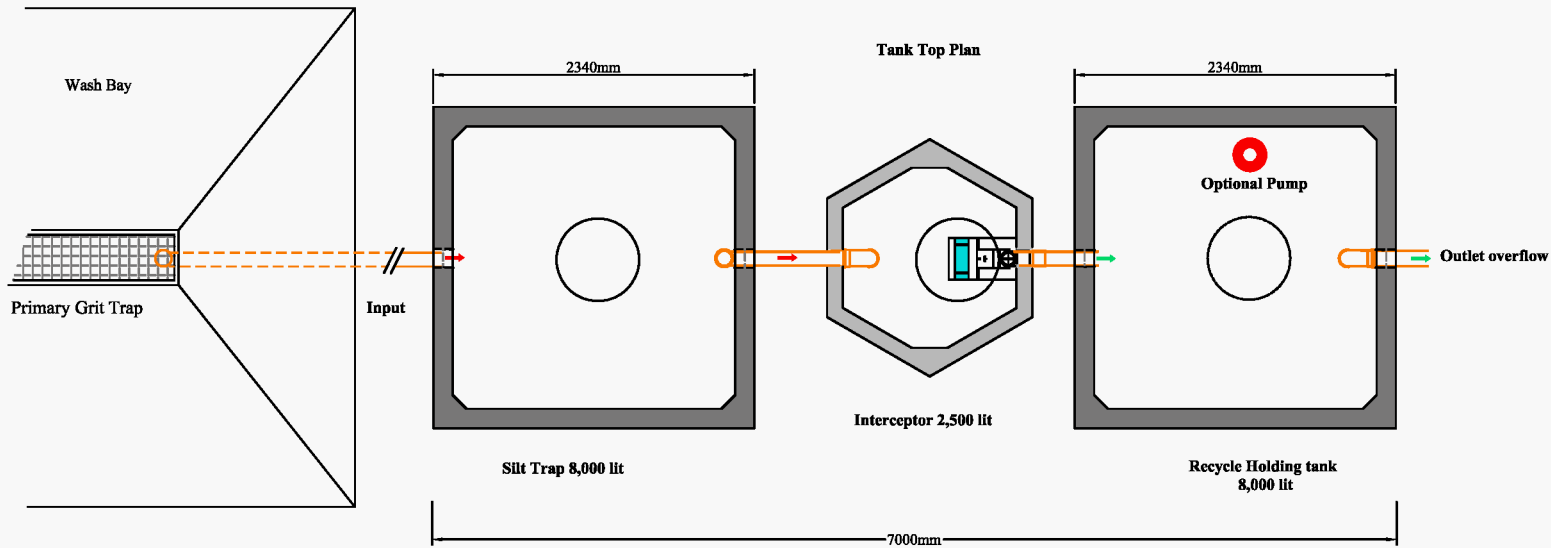


**Carwash silt trap, Interceptor and holding tank for recycling,
EN 858 FR-NS-06-H Class 1 Interceptor. Tanks Volume 18,500 lit**



All the tanks must be placed on a perfectly level and firm suitable base.
Typical layout, variations as required per customer.

Notes:

This drawing is ©. All rights reserved.
Note: Observe all safety regulations in regard to excavation and lifting requirements. Never leave opening uncovered or unattended at any time.
Note: Specify any specific requirements prior to ordering. All civil works by customer.
Note: Do not scale from this drawing. Only for illustration purposes.

Tank Type: C Tank
Tank Size: 2340mm x 2340mm
Height: 2095mm (Ex. Lid)
Volume: 8000 liters
Weight: 4750kg (Ex. Lid)
 (Tank Dim: ± 20mm. Weight: ± 30Kg.)

Tank Type: H Full Retention Interceptor
Tank Size: 1720mm x 1490mm
Height: 2350mm
Volume: 2500 liters
Weight: 1500kg (Ex. Lid)
 (Tank Dim: ± 20mm. Weight: ± 30Kg.)

EN 858 FR-NS-6 specs.
6 l/s flow (@ 65mm/hr rain intensity)
333m sq. coverage
400 lit. emergency oil retention
800 lit. silt capacity

Maximum Wash Bay area to be no more than 333m² for an FR-NS-6



Tank lifting
 Accidental damage caused by incorrect lifting is the responsibility of the client.

Lifting limitations:
Max Chain Angle < 60°

< 60° > 60°

✓ ✗

MOLLOY
 ENVIRONMENTAL SYSTEMS

Clara Road, Tullamore, Co. Offaly, Ireland
 Tel: 057 9326000 info@molloyprecast.com
 Fax: 057 9326060 www.molloyprecast.com

FR-NS-06-CHC Carwash Recycling 2016
 Date: 2016
 Drg. No.: FR-NS-06-CHC Carwash Recycling 2016
 Drawn By: MC