

<b>Roadstone Ltd.</b>	
<b>Intake Procedure for a Co-Located Soil Recovery Facility and Article 27 By-Product Material</b>	
	<b>Pages 3</b>
	<b>Document Number: 001</b>
	<b>Date:</b>
	<b>Approved By: LG</b>

### Material Receiving

1. Roadstone has operated a co-located site at Huntstown since 2019. Sites are preapproved prior to any material being accepted at a Roadstone location, with the required Soil Recovery Waste/Art. 27 notification posted on the EPA website (as per Guideline).
2. Once approved, all sites are given a unique project code on our IT/ticketing system. This will be linked to the customer account and will be quoted on all tickets/dockets for the site intake. Only when the site has been approved will material be accepted at the Roadstone facility.
3. Upon entering the site, trucks are directed to the facility weighbridge/receiving area where the loads are weighed, and a unique ticket code issued for each consignment. The ticket record the date, time, load number, truck reg., weight, customer name/address, source site name/address, and any other details required. An electronic version is stored on the IT system.
4. The office clerk will direct the lorry to the appropriate tipping area for the source site in question, directed either to the Inert Soil and Stone waste tipping area or the Inert Soil and Stone ART 27 tipping area.
5. The truck will be instructed to follow the required transport route, which are clearly delineated, and sign posted (See Fig. 1.).
6. Each Truck will have a sign in the windscreen identifying the area approved to receive the material, this will allow for a visual aid for the banksman /Dozer driver to ensure load is being tipped in correct area (See Fig. 2).
7. The weighbridge is monitored by CCTV, visible to the weighbridge operatives allowing for a visual on all load intake activity. This is recorded and stored for a period of 7 years.
8. CCTV cameras at the tipping areas will ensure that the loads are tipped in the correct areas. This is recorded and stored for a period of 7 year.
9. All loads exiting the site will follow the designated traffic route and will be directed to the wheel wash facility prior to exiting the site.

**Note: This procedure will be followed in Huntstown and Brownswood.**

# Roadstone Ltd.

Intake Procedure for a Co-Located Soil Recovery Facility and  
Article 27 By-Product Material

Pages 3

Document Number: 001

Date:

Approved By: LG

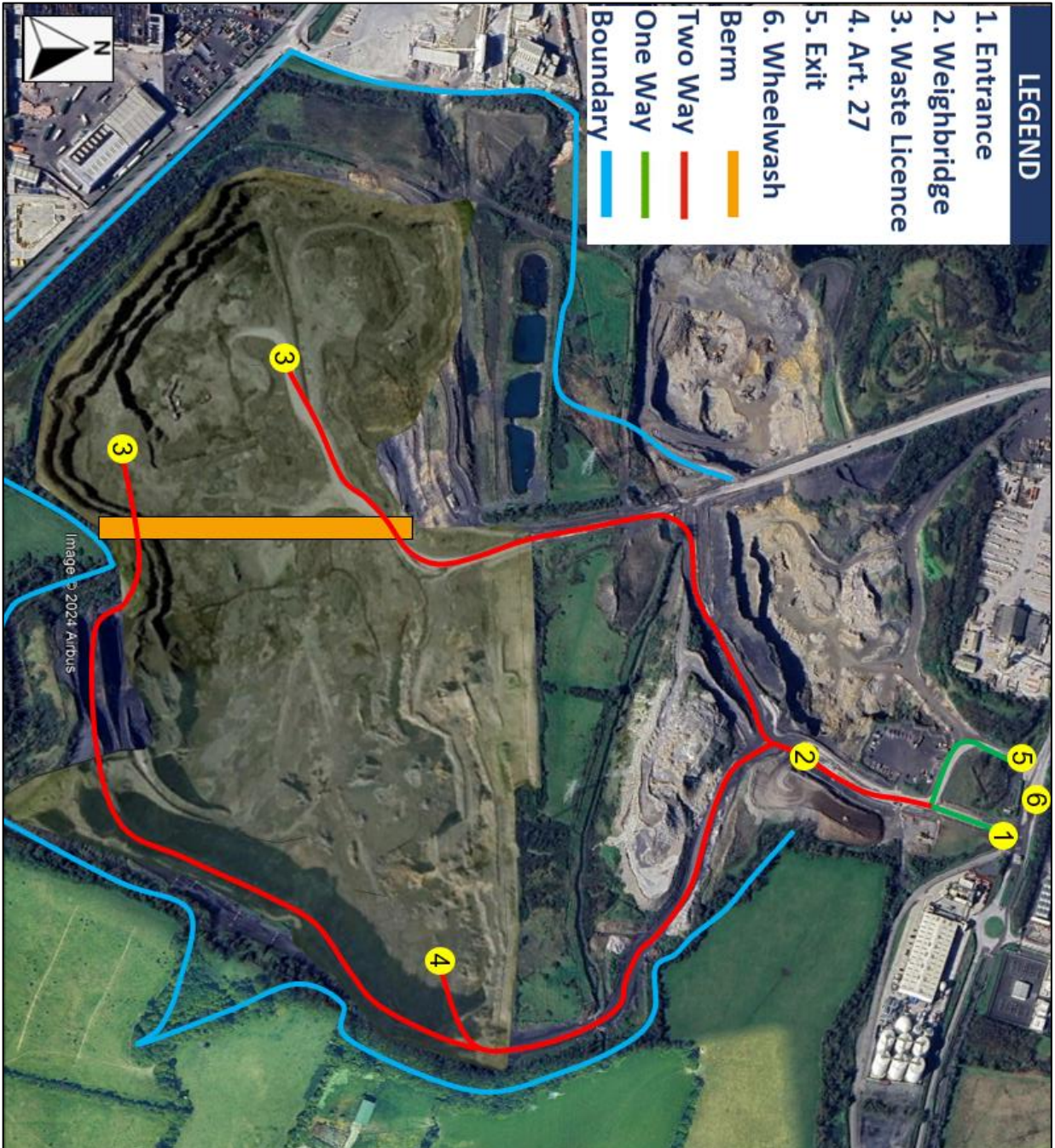


Figure 1. Showing the transport routes for the South quarry.

**Roadstone Ltd.**

**Intake Procedure for a Co-Located Soil Recovery Facility and  
Article 27 By-Product Material**

**Pages 3**

**Document Number: 001**

**Date:**

**Approved By: LG**



**Figure 2. Trucks with a sign in the windscreen identifying the area approved to receive the material.**