

This Report has been cleared for submission to the Director by Programme Manager, Marie O'Connor

Signed: *Marie O'Connor* **Date: 20 February 2023**



OFFICE OF ENVIRONMENTAL SUSTAINABILITY

INSPECTOR'S REPORT ON AN INDUSTRIAL EMISSIONS LICENCE APPLICATION, LICENCE REGISTER NUMBER P1150-01

TO: SHARON FINEGAN, DIRECTOR

FROM: Philip Stack, ELP Inspector

DATE: 20 February 2023

Applicant: Longfield Poultry Unlimited Company
 CRO number: 555654
 Location/address: Lislea, Virginia, County Cavan
 Application date: 24 March 2021

Class of activity (under EPA Act 1992 as amended): 6.1(a): The rearing of poultry in installations where the capacity exceeds 40,000 places.
 Category of activity under IED (2010/75/EU): 6.6(a): Intensive rearing of poultry with more than 40,000 places for poultry.

Main CID: CID (EU) 2017/302 (15 February 2017). Establishing (BAT) conclusions, under Directive 2010/75/EU of the European Parliament and of the Council, for the intensive rearing of poultry or pigs.

All relevant CIDs, BREF documents and legislation are listed in appendices of this report.

Activity description/background: Expansion of an activity for the rearing of poultry (broilers) in an installation with a capacity increasing from 28,000 to 50,000 birds.

Additional information received: Yes (15 June 2021, 24 March 2022, 27 May 2022, 05 October 2022)

No of submissions received: 6

Environmental Impact Assessment required: Yes	Stage 2 Appropriate Assessment required: Yes
---	--

Environmental Impact Assessment Report submitted (EIAR): Yes (24 March 2021)	Natura Impact Statement (NIS) submitted: Yes (05 October 2022)
--	--

Site visit: None

1. Introduction

This is an assessment of an application for an Industrial Emissions Directive (IED) licence to carry on an activity under Part IV of the Environmental Protection Agency Act 1992, as amended.

Longfield Poultry Unlimited Company owns and operates a free-range poultry (broiler) rearing farm at Lislea, Virginia, County Cavan. Details of the current and proposed site capacity and infrastructure are provided in Table 1.1 below.

The installation consists of two poultry houses and the applicant is proposing to construct extensions to both of these houses to accommodate the increase in bird numbers.

Table 1.1. Application details.

	Existing	Proposed
<i>Bird type</i>	Broiler	Broiler
<i>Current numbers</i>	28,000	50,000
<i>No. of poultry houses</i>	2	2

The Recommended Determination (RD) requires that the applicant notifies the Agency one month before the intended date of commencement of the scheduled activity i.e. operating above the Industrial Emissions licencing threshold of 40,000 birds.

A map of the site layout is included in Appendix 1 of this report.

2. Description of activity

The installation is located in a rural location, with most development near the installation consisting of dwelling houses and farmyards. Poultry farming has been carried out on this site for approximately 15 years. The present enterprise provides part-time employment for the applicant.

The main activities at this installation will occur during normal working hours between 06:00 and 20:00. Stock inspections will be carried out every day, including weekends and bank holidays and additional essential activities may be undertaken outside of core working hours. The installation will operate in accordance with the requirements of the Department of Agriculture, Food and the Marine, and under the Bord Bia Poultry Products Quality Assurance Scheme (PPQAS).

The process involves the rearing of stock specifically bred for lean poultry meat production. Day old chicks delivered to the hatchery will be held indoors for a four-week period. For the following three to four weeks they will have access to the outdoor "range" area around each house during daylight hours but are closed in at night. At the end of each rearing cycle (at approximately eight weeks of age), the houses will be destocked, and the birds will be removed from the installation to the processing installation. Poultry litter (organic fertiliser) will be removed, and the houses will be cleaned. Following a period of two weeks, to allow for complete drying after the cleaning process, the houses will be restocked.

The type of poultry house used for this activity is a simple closed building of block and timber/wood construction on an impervious concrete base. The houses are thermally insulated, with a computer-controlled ventilation system and artificial

lighting. Automatic feeding and ventilation systems operate on a 24-hour basis. The solid flooring of each broiler house will be bedded with wood shavings/chopped straw over its entire area immediately prior to housing each new batch brought from the hatchery. The principal inputs to the operation are bedding, feed, water, veterinary medicines and energy (electricity, diesel for back-up generator, and gas for heating). The main by-product of poultry rearing is organic fertiliser (poultry litter and wash water). These are discussed in further detail below.

3. Planning Status

A number of planning applications have been made by the applicant for the area within the installation boundary (04/2220, 05/1624, 20/563).

On 25 March 2021, Cavan County Council granted planning permission (Ref: 20/563) for the construction of extensions to the two poultry houses to accommodate an overall capacity on the farm of 50,000 places. This expansion work has been partially completed. Details of these planning applications and permissions have been provided in the application form.

The applicant has submitted the EIAR associated with planning permission ref. no. 20/563.

The Agency has had regard to the reasoned conclusions reached by the planning authority in undertaking its environmental impact assessment of the activity.

Schedule A of the RD limits the number of birds housed onsite to 50,000 broilers. This is the capacity that is specified in the application, in the EIAR submitted in support of the application, and in the planning permission granted for the installation.

4. Environmental Impact Assessment (EIA) Screening

In accordance with Section 83(2A) of the EPA Act 1992 as amended, the Agency must ensure that before a licence or revised licence is granted, that the application is made subject to an EIA, where the activity meets the criteria outlined in Section 83(2A)(b) and 83(2A)(c).

In accordance with the EIA Screening Determination, the Agency has determined that the activity is likely to have a significant effect on the environment, and accordingly is carrying out an assessment for the purposes of EIA.

Having considered the information provided by the applicant, which satisfies the requirements of Annex II A of the EIA Directive, it has been determined that the change to the activity is likely to give rise to significant effects on the environment by virtue of its nature, size or location. This determination has been made having regard to the following:

The activity exceeds the following threshold in Part 2 of Schedule 5 of the Planning and Development Regulations 2001, as amended:

- 1(e)(i) Installations for the intensive rearing of poultry not included in Part 1 of the above Schedule which would have more than 40,000 places for poultry.

An EIAR was submitted to the Agency as part of the application on 24 March 2021. This is addressed in the 'EIA' Section later in this report.

5. Best Available Techniques and CID

BAT for the installation was assessed against the BAT conclusions contained in Commission Implementing Decision of 15 February 2017 establishing BAT conclusions for the intensive rearing of poultry or pigs (2017/302/EU) and in any other relevant BREF documents specified in the appendices of this report. A detailed BAT assessment was carried out by the applicant and is included in Section 4.7 of the application form. Additional conditions that have been incorporated into the RD to address BAT Conclusions are detailed throughout this report. Any relevant BAT-AELs have been specified in the emissions sections of this report.

I consider that the applicable BAT Conclusion requirements are addressed through the technologies and techniques as described in the application, as well as the conditions and limits specified in the RD.

6. Emissions

6.1 Emissions to Air

This section addresses emissions to air from the installation and the environmental impact of those emissions.

6.1.1 Channelled Emissions to Air

There are no main emission points to air from the installation.

6.1.2 Fugitive Emissions

The only fugitive emissions from this sector are dust, odour and ammonia. These are discussed below. The nearest third-party dwellings potentially affected by fugitive emissions are detailed below (Table 6.1).

Table 6.1: Nearest third-party residential dwellings.

Distance from Site (number of dwellings)	Direction from Site
150-200 m (3)	Northeast
190 m (1)	South
325 m (1)	Southeast
370 m (1)	Southwest

6.1.3 Dust

Dust may arise from the expulsion of warm air from ventilation systems onsite, vehicle movements, removal of organic fertiliser, filling of meal storage bins and the loading and unloading of animals during periods of dry weather. Minimal dust impact may occur locally within the installation boundary during site operations.

No complaints were received in relation to dust for this site by the Agency or by the applicant.

The applicant has stated that good housekeeping at the installation will minimise dust from the installation.

The RD specifies the following to prevent the generation and emission of dust:

- That dust from the activity shall not result in an impairment of, or an interference with amenities or the environment beyond the installation boundary (Condition 5).
- To use one or a combination of the techniques listed in BAT 11 to prevent or reduce dust emissions from the poultry houses (Condition 6).

Dust is not expected to be a significant issue beyond the installation boundary.

6.1.4 Odour

The potential impact from odour from poultry house odours is minimal as houses are stocked at optimum levels, adequately ventilated, and the litter kept as dry as possible. Odour may arise when removing the organic fertiliser from the houses and when the houses are cleaned; however, this is deemed to be minor because it is removed just once in every 10 week cycle (approximately five times per annum) and takes 4-5 hours to completely remove the organic fertiliser from the houses. All organic fertiliser from the houses will be removed offsite by a registered contractor.

No complaints or submissions relating to odour have been received by the Agency, the HSE, or by the applicant. Therefore, odour is not expected to be a significant issue.

The RD specifies the following odour control conditions:

- That odour from the activity shall not result in an impairment of, or an interference with amenities or the environment beyond the installation boundary (Condition 5).
- To use a diet formulation and nutritional strategy to reduce the total nitrogen and phosphorus excreted, as per BAT 3 and BAT 4 (Condition 6).
- To use a combination of the techniques listed in BAT 13 to prevent/reduce odour emissions/impact from the site (Condition 6).
- That carcasses stored onsite will be stored in covered leak-proof containers and transported offsite in covered, leak proof containers at least fortnightly (Condition 8).
- That organic fertiliser shall not be stored in the open pending its collection (Condition 8).

6.1.5 Ammonia

The report "*Ireland's Informative Inventory Report 2022*¹" (EPA, 2022) identifies agriculture as the primary contributor (99.4%) of Irish ammonia emissions in 2020, emitting a total of 123.41 kilotonnes (kt) of ammonia in that year. According to that report, ammonia emissions from the poultry sector in 2020 were approximately 4.9 kt. The Department of Agriculture, Food and the Marine (DAFM) has published a '*Code of Good Agricultural Practice for reducing Ammonia Emissions from Agriculture*²', as required by the National Emission Ceiling Directive (NECD).

¹https://www.epa.ie/publications/monitoring--assessment/climate-change/air-emissions/Ireland-IIR-2022_mergev2.pdf

² <https://www.gov.ie/en/publication/9a6c6-code-of-good-agricultural-practice-for-reducing-ammonia-emissions-from-agriculture/>

This installation will emit approximately 4.4 tonnes of ammonia per annum. Ammonia emissions from this activity could have the potential to impact sensitive receptors in the vicinity of the installation.

The Agency screened the impact of ammonia emissions and nitrogen deposition at European sites using a screening model (SCAIL Agriculture³) which indicated potentially elevated ammonia emissions and nitrogen deposition. The model results indicate the potential for the poultry rearing process to contribute to ammonia emissions and nitrogen deposition at European sites. The SCAIL Agriculture screening model is conservative. The screening was based on standard animal housing and did not include the use of low emission housing onsite.

The applicant submitted a full site-specific model (not a screen model), as part of the completion of a NIS, using more refined details in accordance with the requirements of AG4⁴. As well as modelling the emissions from the houses, the model took into account ammonia emissions from the range area. The model indicated no significant impacts in the River Boyne and River Blackwater SPA, River Boyne and River Blackwater SAC, and the Kilconny Bog (Cloghbally) SAC. The SCAIL screening model had indicated that the installation would not impact on the Lough Sheelin SPA, Lough Bane and Lough Glass SAC, Girley (Drewstown) Bog SAC, White lough, Ben Loughs and Lough Doo SAC, and Moneybeg and Clareisland Bogs SAC. Site ventilation details and stack heights have been set in Schedule C.1.2 of the RD as per the information in the model.

Qualifying interests in European sites will not be affected by ammonia emissions from the installation, due to the distance between the installation and the designated sites, the type and physical characteristics of the designated sites, and associated dispersion/mitigation techniques proposed by the applicant.

The applicant has stated that the design of the buildings, adherence to good management practices, and implementation of the required mitigation measures will reduce ammonia emissions from the installation. The RD specifies the following additional ammonia minimisation conditions:

- To establish, maintain and implement an Ammonia Management Programme prior to commencement of the activity (i.e. operating above the licensable threshold of 40,000 birds) and in accordance with BAT 23, undertake an estimation/calculation of the reduction in ammonia emissions from the activity achieved by implementing BAT (Condition 5).
- To use a diet formulation and nutritional strategy to reduce the total nitrogen excreted, as per BAT 3 (Condition 6).
- To use one or a combination of the techniques listed in BAT 32 to reduce ammonia emissions to air from each house for broilers (Condition 6).

³ SCAIL Agriculture is a web-based screening tool available at <http://www.scail.ceh.ac.uk/>

⁴ Air Dispersion Modelling from Industrial Installations Guidance Note (AG4): <https://www.epa.ie/publications/compliance--enforcement/air/air-guidance-notes/epa-air-dispersion-modelling-guidance-note-ag4-2020.php>

- To complete an estimation of ammonia emissions from the houses in accordance with BAT 25 (Schedule C).

The Agency has set the emission limits in Schedule B.1 in accordance with those set out in the CID and BREF.

The potential for ammonia emissions from the landspreading of poultry litter offsite is covered in the Organic Fertiliser section later in this report.

6.2 Emissions to Water and Ground

6.2.1 Emissions to Surface Waters

There are no direct process emissions to surface waters from this activity.

6.2.2 Emissions to ground/groundwater

There are no direct process emissions to ground/groundwater from this activity. The applicant states in the application that there has been no historical contamination of groundwater at the site.

The only emission to ground from the activity is animal defecation during the time that the birds have access to the range areas. The Nitrates Regulations⁵ will apply to the range area and therefore organic nitrogen application must not exceed 170 kg per hectare. There is no outdoor access during the first four weeks of the eight-week cycle, and during the second four weeks of the cycle, access is only available for an average of eight hours a day. During this period, approximately 20% of the birds are outdoors at any one time. Based on this, the applicant has calculated that approximately 5% of the total volume of organic fertiliser generated by the activity will be deposited in the range area. This equates to a nutrient loading of 58 kg of nitrogen and 32 kg of phosphorus per hectare per annum, once stocked at the proposed 50,000 broilers, which is compliant with the Nitrates Regulations. Condition 6 of the RD requires a comprehensive risk assessment to determine the risk posed to ground/groundwater by the free-range aspect of the operation as a Scheduled Activity.

6.2.3 Other emissions to ground/groundwater

There are no other emissions to ground or groundwater.

6.3 Storm water discharges

Storm water arises onsite from rainwater collected from clean yards and from the roofs of buildings.

All clean storm water will be diverted away from soiled areas of the site by a storm water collection system around each house and will be diverted by gravity for discharge via four proposed discharge points (SW-1, SW-2, SW-3 and SW-4) into the Lislea

⁵ S.I. No. 113 of 2022 European Union (Good Agricultural Practice for Protection of Waters) Regulations 2022.

Stream on the southern and western boundaries of the site. All four of the discharge points will have a silt trap installed prior to discharge.

The table below gives details on installation's storm water discharges to waters, the type of onsite abatement, as well as details of the receiving water.

Table 6.2: Stormwater discharge point details

Discharge Reference	Monitored parameters (monitoring frequency)	Abatement	Drainage areas	Discharging to
SW-1 (proposed)	Visual (weekly); COD/BOD (as required by the Agency)	Silt trap	Roofs and clean yards	Lislea stream >> Lough Ramor
SW-2 (proposed)	Visual (weekly); COD/BOD (as required by the Agency)	Silt trap	Roofs and clean yards	Lislea stream >> Lough Ramor
SW-3 (proposed)	Visual (weekly); COD/BOD (as required by the Agency)	Silt trap	Roofs and clean yards	Lislea stream >> Lough Ramor
SW-4 (proposed)	Visual (weekly); COD/BOD (as required by the Agency)	Silt trap	Roofs and clean yards	Lislea stream >> Lough Ramor

The stormwater discharges to the Lislea Stream, which flows into Lough Ramor approximately 3.0 km downstream of the installation. The Lislea stream currently has a WFD status of 'good' (waterbody code: IE_EA_07L010100). Drinking water is abstracted from Lough Ramor, which has a WFD status of 'poor'. Lough Ramor discharges to the River Blackwater, which is part of the River Boyne and River Blackwater SAC and SPA.

The storm water discharged from the installation should be uncontaminated and, therefore, should have no qualitative impact on receiving waters. The only period during which there is potential for contamination of surface waters is during removal of organic fertiliser from the poultry houses and when the houses are washed out. All wash water is diverted to one underground wash water storage tank. Wash water from the concrete areas at the front of the houses is washed into a designated separate wash water storage tank at the southern end of the site. Therefore, no wash water will enter the storm water drainage system.

The applicant has stated that the proposed infrastructure, adherence to good management practices, and implementation of the required mitigation measures will mitigate the risk of storm water contamination. The RD requires the following in relation to storm water management:

- That all uncontaminated storm water be diverted to the storm water drainage system (Condition 6).
- That an up-to-date site drainage map be maintained onsite, and that the storm water drainage system be inspected weekly and maintained properly at all times (Condition 6).
- That a storm water/rainwater collection and drainage system for all poultry houses onsite be provided and maintained (Condition 6).
- That inspection chambers at the outlets of the storm water drainage system be provided and maintained prior to commencement of the licensable activity (Condition 3).

- That prior to commencement of the licensable activity, silt traps be provided and maintained on the storm water discharge points. (Condition 6).
- That wash water is diverted to the wash water storage tanks prior to the commencement of poultry litter removal and washing of the houses, until such time that wash down activities are completed, and that a written procedure and records of this are maintained (Condition 6).
- That the storm water discharge is visually inspected weekly and monitored for Chemical Oxygen Demand (COD) or Biological Oxygen Demand (BOD) as required by the Agency, in accordance with Schedule C.2.3 *Monitoring of Storm Water Discharges*.

The RD contains standard conditions in relation to the storage and management of materials and wastes. The RD also requires that accident and emergency response procedures are put in place. The controls pertaining to accidents and emergencies are addressed in the Prevention of Accidents section later in this report.

6.4 Noise

The main sources of noise at the installation include the operation of equipment, ventilation systems, vehicle deliveries/collections, and animals. As mentioned earlier, the nearest third-party residential dwelling is 150 m away.

The applicant has calculated that birds are outside of the poultry houses for approximately 20 weeks of the year once stocked at full capacity, and there will be approximately 20% of the birds outside at any one time. Birds will be outside during daylight hours only and confined to the poultry houses during night time hours. Feeding activities will be carried out indoors only.

There has been no history of noise complaints at the installation and none have been received by the Agency or the HSE. No submissions have been received outlining that noise is a cause for concern from the installation.

Noise emissions will primarily be minimised by implementing good management practices. Noise conditions and emission limit values, which apply at the noise-sensitive locations, have been included in the RD.

- Noise from the installation shall not exceed the limit values set out in Schedule *B.4 Noise Emissions* of the RD at noise sensitive locations (Condition 4).
- The use of one or a combination of the techniques listed in BAT 10 to prevent/reduce noise emissions from the site (Condition 6).
- A requirement that a noise survey be carried out of the site operations, as required by the Agency (Condition 6).

7. Waste Generation

Certain wastes are generated onsite as part of the licensable activity. Waste generated onsite will mainly comprises of spent fluorescent tubes, fallen stock (animal carcasses), and general waste. The total quantities estimated to be generated are given in Table 7.1 below. The applicant will employ a number of measures at the installation for the prevention and/or minimisation of waste.

Table 7.1: Estimated waste generation

<i>Waste Type</i>	<i>Estimated quantity (tonnes) per annum</i>
Animal Carcasses	5

General Waste	1
Plastics, paper and cardboard	1
Fluorescent Light Tubes	0.045

In accordance with the hierarchy specified in the IED, waste generated at the site will, in order of priority, be minimised, be prepared for re-use, recycling, recovery or disposal. Conditions relating to waste management have been included in Condition 8 of the RD. Carcasses will be stored temporarily onsite in covered skips/bins, before being transported to an appropriately licensed installation.

A fly and rodent control programme will be developed to cover the installation. The programme as implemented will be in line with Bord Bia and Department of Agriculture, Food and The Marine requirements.

Condition 3 of the RD requires the applicant to establish, maintain and implement a pest control programme in accordance with relevant DAFM guidelines. These guidelines take account of the requirements of the Campaign for Responsible Rodenticide Use (Ireland).

8. Organic Fertiliser

The installation will necessarily generate organic fertiliser (poultry litter and wash water). Details are given in Table 8.1 below.

Table 8.1: Organic fertiliser

	Wash water	Poultry litter
Quantity produced per annum	90 m ³	480 tonnes
Number of storage tanks/stores onsite	1	NA
Total storage capacity onsite (ex. freeboard)	38 m ³	0
No. weeks storage onsite	22 (additional storage available offsite)	NA
End use offsite	Landspreading by applicant	Landspreading by customer farmers/mushroom composting via contractor
Contractor Name	N/A	McCartney Contractors Ltd.
Contractor DAFM No.	N/A	HAC2338

Condition 8 of the RD requires that the applicant maintains a record of organic fertiliser sent offsite for use on land or for compost production in accordance with the requirements of the Nitrates Regulations⁶. The applicant will be required under the licence to submit to DAFM by the 31st of December annually details in relation to the

⁶ S.I. No. 113 of 2022 European Union (Good Agricultural Practice for Protection of Waters) Regulations 2022.

quantity of organic fertiliser (poultry litter and wash water) exported (Record 3 form) offsite. The record must also be maintained at the installation for inspection by the Agency, Local Authority or DAFM. DAFM may use the record of export of organic fertiliser to identify the recipient of the organic fertiliser and the quantity received.

The Animal By-product (ABP) Regulations⁷ impose legal requirements on the applicant, the 'commercial haulier' and the user of the organic fertiliser. These requirements include use of a 'commercial document' to record details required under the regulations. The applicant will be required to receive a completed copy of the 'commercial document' from the transporter confirming the final destination.

Other than defecation in the range areas, there will be no landspreading of organic fertiliser conducted or permitted within the installation boundary, and consequently there will be no additional ammonia emissions from landspreading activities within the installation boundary. It is important to note that the IE licence relates to the site of the activity for which the licence application is made and does not extend to the lands on which organic fertiliser may be used as fertiliser. The Nitrates Regulations specify when organic fertiliser can be applied to land and the application rates, and these are enforced by the DAFM and Local Authorities.

8.1 Organic Fertiliser (Poultry Litter)

Under the ABP Regulations, poultry litter is categorised as a category 2 Animal By-product and the options for its disposal/recovery are set out in Article 13 of Regulation 1069/2009, as amended.

Poultry litter must be transported either by the applicant (or staff member) or by a haulier registered with the Department of Agriculture, Food and the Marine. Poultry litter will be moved offsite by an approved and registered contractor for use in mushroom compost production, and/or by other customer farmers for use as an organic fertiliser.

The DAFM provides detailed Codes of Practice for the handling and use of poultry litter, which includes, amongst other things, disease prevention (poultry litter may cause botulism in cattle on the farm on which it is spread and neighbouring farms).

The application includes a letter from McCartney Contractors Limited, confirming they take poultry litter from the installation (details given in Table 8.1 above). Whilst the contractor detailed above is not initially providing poultry litter to farmers directly for use as an organic fertiliser, and their intention is to send it for use in mushroom compost facilities, they may in the future send it to customer farmers for landspreading.

⁷ EU Animal By-Product Regulation (EC) No. 1069 of 2009 and Regulation (EU) No. 142 of 2011, given legal effect by The European Union (Animal By-Product) Regulations 2014 (SI No. 187/2014), laying down health rules as regards animal by-products and derived products not intended for human consumption and repealing Regulation (EC) No 1774/2002 (Animal By-Products Regulation) as amended.

The Nitrates Regulations (Article 11(1)) require that a minimum of 26-weeks' storage capacity for organic fertiliser is provided. The applicant is exempt from this storage period once there is a contract in place for the removal of poultry litter by a registered contractor, as set out above. Such exemption is provided in accordance with Article 14(1) of the Nitrates Regulations. Condition 3 of the RD requires compliance with the relevant articles of the Nitrates Regulations, i.e. that either such a contract or the required storage is in place.

The quantity of nitrogen and phosphorus generated by the activity at the proposed licence capacity is approximately:

- 12,000 kg N per year, and
- 4,500 kg P₂O₂ per year,

based on figures available in the Nitrates Regulations (annual nutrient excretion rates for livestock)

The RD contains the following additional requirements relating to the management of poultry litter:

- To monitor the total nitrogen and phosphorus excreted in manure annually, in accordance with BAT 24 (Condition 6).
- To inspect the integrity of the floors of all deep litter houses after each wash down, repair any damaged or cracked floors as necessary, and maintain a record of inspections and any necessary remedial actions taken (Condition 6).
- That any organic fertiliser spilled to ground during loading, shall be collected and returned to storage or to the vehicle into which it was being loaded (Condition 8).
- That the applicant uses a combination of the techniques listed in BAT 6 to reduce the generation of wash water onsite (Condition 6).
- That the applicant uses one or a combination of the techniques listed in BAT 7 to reduce the emissions to water from wash water onsite (Condition 6).
- That a freeboard of at least 200mm from the top of covered organic fertiliser storage tanks and 300mm from the top of uncovered organic fertiliser storage tanks is maintained, as a minimum, at all times and that this is clearly indicated in the tank (Condition 6).

8.2 Wash water

Wash water will be generated by the activity every 10 weeks. Prior to washing, the floors will be brushed to reduce the quantity of poultry litter that could potentially enter the wash water system. After washing, the houses are allowed to dry and then disinfectant applied. The wash water may contain insignificant quantities of disinfectant from the previous washing cycle.

Wash water details are given in Table 8.1 above. The wash water storage capacity will be supplemented by additional storage available in the applicant's offsite bovine slurry storage tanks. The total wash water storage capacity is sufficient to meet the 26-week storage capacity requirement in the Nitrates Regulations.

The wash water is considered suitable for use on land as an organic fertiliser and such use is provided for by the Nitrates Regulations and Animal By-product Regulations. The applicant has identified approximately 61 ha of farmland on the applicant's landholding in the vicinity of the activity, outside the boundary to which this licence relates, on which the wash water will be landspread. The applicant has demonstrated in the application that the addition of wash water from the installation will not result

in a stocking rate above 170 kg organic Nitrogen per hectare stocking rate, the maximum specified in the Nitrates Regulations.

The RD contains the following conditions relating to the management of wash water:

- That wash water storage tanks be fitted with high liquid level indicators prior to commencement of the activity (Condition 3).
- That all storage tanks are integrity assessed prior to commencement of the activity, and at least once every three years thereafter (Condition 6).
- That a combination of the techniques listed in BAT 6 be used to reduce the generation of wash water onsite (Condition 6).
- That one or a combination of the techniques listed in BAT 7 be used to reduce the emissions to water from wash water onsite (Condition 6).
- That a freeboard of at least 200 mm from the top of covered wash water storage tanks and 300 mm from the top of uncovered wash water storage tanks is maintained, as a minimum, at all times and that this is clearly indicated in the tank (Condition 6).
- That the loading and unloading of materials shall be carried out in designated areas protected against spillage and leachate run-off (Condition 8).

9. Energy Efficiency and Resource Use

The operation of the installation involves the consumption of fuel, electricity and resources. The estimated quantities to be used at a capacity of 50,000 birds are given below.

Table 9.1: Estimated resource usage

Resource	Quantity per annum
Electricity	50,000 kWh
Liquified Petroleum Gas	13,500 m ³
Water (GWS/onsite well)	2,000
Water Abstraction registration required:	No
Feed	1,040 t

The applicant employs a variety of technologies to maximise the efficient use of energy within the installation, including regular preventative maintenance of equipment, use of energy efficient lighting systems and thermal insulation.

The only source of water for the activity is an onsite well located adjacent to Broiler House 2. The RD requires the applicant to carry out monitoring of the well annually. The installation is located on the Cavan groundwater body (IE_NW_G_061), a poor bedrock aquifer, generally unproductive except in local zones, which has a WFD status of 'good'.

In accordance with the European Union (Water Policy) (Abstractions Registration) Regulations 2018 (S.I. No. 261 of 2018) those who abstract 25 m³ of water or more per day are required to register their water abstraction with the EPA. The applicant is not required to register their abstraction.

It is considered that given the limited quantities abstracted, potential effects on the environment are considered neither likely nor significant.

The RD specifies that the applicant undertake the following in relation to energy and resource efficiency:

- Annual maintenance of the animal house heating systems and the back-up generator (Condition 3).
- To install and maintain a water meter on all water supplies (Condition 3).
- To use a combination of the techniques listed in BAT 8 (efficient use of energy) and BAT 5 (efficient use of water) (Condition 7).
- To undertake an assessment of the efficient use of resources and energy in all site operations, undertake an energy audit, repeated at intervals as required by the Agency with the recommendations of the audit being incorporated into the Schedule of Environmental Objectives and Targets as outlined in Condition 2 (Condition 7).

10. Prevention of Accidents

A certain amount of accident risk is associated with the licensable activity. For this installation, potential accidents and measures for prevention/limitation of consequences are given in the table below.

Table 10.1: Potential accidents and measures for prevention/limitation of consequences

<p>Potential for an accident or hazardous/emergency situation to arise from activities at the installation</p>	<ul style="list-style-type: none"> - Surface water and/or ground/groundwater contamination during poultry removal and washing. - Surface water and/or ground/groundwater contamination by spillage of organic fertiliser, fuel or other polluting materials. - Surface water and/or ground/groundwater contamination due to leaks from tanks. - Accidental diversion of wash water to storm water drainage system. - Accidental emissions of noise, dust or odour such as to cause nuisance outside the site boundary.
<p>Preventative/Mitigation measures to reduce the likelihood of accidents and mitigate the effects of the consequences of an accident at the installation</p>	<ul style="list-style-type: none"> - The provision and maintenance of adequate wash water storage facilities. - The storage of potentially polluting liquids in bunded areas. - The provision of concrete aprons around wash water areas. - The protection of gas/fuel tanks from accidental damage. - The separation of wash water and clean storm water, including diversion of the storm water collection system to the wash water holding tank during cleaning.
<p>Additional measures provided for in the RD</p>	<ul style="list-style-type: none"> - Integrity assessment and maintenance of the wash water network and poultry house floors as required (Condition 6).

	<ul style="list-style-type: none"> - The regular visual examination and inspection of the storm water discharge points and storm water drainage system (Condition 6). - No storage of organic fertiliser (poultry litter) onsite, other than what is in the poultry houses during the poultry rearing cycle at the installation (Condition 8) or deposited in the free-range areas. - The provision of more than 26-weeks organic fertiliser (wash water and/or poultry litter) storage capacity (Condition 3). - Accident prevention and emergency response procedures requirements (Condition 9). - A preventative maintenance programme (Condition 2).
--	--

The risk of accidents and their consequences, and the preventative and mitigation measures listed above, have been considered in full in the assessments carried out throughout this report. It is considered that the conditions of the RD and the mitigation measures proposed will significantly reduce the likelihood of accidental emissions occurring and limit the environmental consequences of such an event should it occur.

11. Cessation of Activity

A certain amount of environmental risk is associated with the cessation of any licensable activity (site closure). The applicant has provided a list of measures to be taken in the event of site closure/cessation of activity. These measures are listed in the non-technical summary submitted as part of the application. Condition 10 of the RD requires the proper closure of the activity with the aim of protecting the environment.

Where an activity involves the use, production or release of Relevant Hazardous Substances, and having regard to the possibility of soil and groundwater contamination at the site of the installation, the IED requires operators to prepare a baseline report. A baseline screening assessment was undertaken by the applicant, in accordance with Stages 1 to 3 of European Commission Guidance⁸.

The screening assessment determined that, considering the type and quantity of substances used as part of the activity, the location of these substances on the site, in view of the soil and groundwater characteristics, and the measures to be taken to prevent accidents and incidents, the possibility of soil and groundwater contamination at the site of the installation is considered to be low. I am satisfied that a full baseline report (stages 4 to 8) is not required.

⁸ European Commission Guidance concerning baseline reports under Article 22(2) of Directive 2010/75/EU on industrial emissions.

Nonetheless, upon cessation of the activity, Condition 10 of the RD requires the applicant to take certain measures to ensure that there is, to the satisfaction of the Agency, no remaining risk of environmental pollution at the site.

12. Fit and Proper Person

Technical Ability

The applicant has operated a free-range poultry farm at this location for approximately 15 years. It is considered that the applicant has demonstrated the technical knowledge required to operate this installation.

Legal Standing

Neither the applicant nor any relevant person has relevant convictions under the Environmental Protection Agency Act 1992, as amended, or under any other relevant environmental legislation.

ELRA, CRAMP and Financial Provision

The licence category and proposed installation were assessed for the requirements of Environmental Liabilities Risk Assessment (ELRA), Closure, Restoration and Aftercare Management Plan (CRAMP) and Financial Provision (FP), in accordance with Agency guidance. Under this assessment it has been determined that ELRA, CRAMP and FP were not required.

Fit and Proper Conclusion

It is my view that the applicant can be deemed a Fit and Proper Person for the purpose of this application.

13. Submissions

The issues raised in the submissions are noted and addressed in this Inspector's Report and the submissions were taken into consideration during the preparation of the Recommended Determination (RD).

Table 13.1: Submissions summary

1.	Name & Position:	Organisation:	Date received:
	<i>Trish Smullen, Senior Geologist</i>	<i>Geological Survey Ireland</i>	<i>22 April 2021</i>
	Issues raised:		
	The submission provided a number of observations in relation to geoheritage, groundwater, and various datasets available from the GSI.		
	<ul style="list-style-type: none"> - The submission states that there is no County Geological Site (CGS) located close to the poultry site. - The submission states that the area is classed as 'extreme' with 'Rock at or near surface' on the groundwater vulnerability map and the area is underlain by a 'Poor aquifer – Bedrock which is Generally Unproductive except for Local Zones'. It provided advice regarding landspreading. - The Agency and applicant are directed towards several datasets provided by the GSI for further information. 		

	<p>Agency Response:</p> <p>Section 6.2 examines emissions to ground. There will be no significant impacts on groundwater.</p> <p>Landspreading of organic fertiliser occurs outside of the licensed boundary and will be carried out in accordance with the Nitrates Regulations and Animal By-product Regulations. This is monitored and controlled by the Department of Agriculture Food and the Marine (DAFM) and the Local Authorities. This report, and the RD refer to the most up to date Nitrates Regulations legislation.</p>		
2.	<p>Name & Position:</p> <p><i>Ms Claire O'Dwyer, Principal Environmental Health Officer</i></p>	<p>Organisation:</p> <p><i>Health Service Executive, Environmental Health Service.</i></p>	<p>Date received:</p> <p><i>27 April 2021</i></p>
<p>Issues raised:</p> <p><i>The HSE submission is based on a report by Ms Claire O'Dwyer, Principal Environmental Health Officer. It provides a summary of their findings. The submission makes a number of observations in relation to the licence application. The topics/issues raised include site location, water supply, soiled water (wash water), storm/ surface water, manure (organic fertiliser), waste, odour, noise and pest control. The submission only comments on to those areas within the remit of the HSE.</i></p> <p><i>Specific recommendations highlighted by the HSE include:</i></p> <ul style="list-style-type: none"> <i>• The EIAR did not provide adequate information on local groundwater supplies in the vicinity in the area. The applicant should consult the Geological Survey of Ireland (GSI) well database in order to identify local wells that may exist and carry out a door to door well survey of dwellings in close proximity to ensure water supplies are protected;</i> <i>• The HSE recommend that the applicant be aware of all poultry manure and soiled water storage requirements on and offsite, including six months storage capacity, certified construction work, and leak detection facilities, BAT in relation to landspreading, the installation of high-level indicators, that monitoring of groundwater nutrients be included in the Nutrient Management Plan, and that the plan be approved by the Agency;</i> <i>• That soiled water does not contaminate clean surface water, all discharge points are labelled and that surface water and groundwater in the vicinity are monitored;</i> <i>• That adequate storage and removal of dead bird carcasses is ensured, that all other wastes are appropriately disposed/recycled and there is no accumulation of waste onsite;</i> <i>• Due to the close proximity of a third -party dwelling to the installation, the HSE recommends that monitoring of odour is continued and that any odour management plan contain a robust complaints procedure whereby any complaints by the local population are recorded and properly investigated;</i> 			

- *The HSE have not received any complaints relating to odour or noise from the installation to date; and*
- *A pest control programme should be implemented onsite and records maintained.*

Agency Response:

The main issues raised in the submission are noted and addressed in the relevant sections of the Inspector’s Report.

There are three third party dwellings within 200m.

The quantity of groundwater that the applicant proposes to utilise is very low and will not impact on the production of other nearby wells. As per the ‘Emissions to ground/groundwater’ section of this report, there are no emissions to ground/groundwater, and therefore no chemical or microbiological threats to groundwater quality, including no threats to the Monaghan Public Water Scheme zone of contribution. Groundwater monitoring of the onsite well is required in the RD.

The RD provides for protection of surface waters and separation of soiled water and storm water. The RD requires labelling of all monitoring and discharge points.

The RD contains conditions in relation to organic fertiliser storage, BAT, tank specifications as well as high-level indicators. The landspreading of organic fertiliser is addressed in the “Organic Fertiliser” section of this report. Landspreading of organic fertiliser occurs outside of the licensed boundary and will be carried out in accordance with the Nitrates Regulations and Animal By-product Regulations. This is monitored and controlled by the Department of Agriculture Food and the Marine (DAFM) and the Local Authorities. This report, and the RD refer to the most up to date Nitrates Regulations legislation.

The RD will require the applicant to have adequate pest control and appropriate storage onsite for dead birds.

Odour are addressed in the relevant sections of this report and odour management conditions are included in the RD.

Pest control is addressed in the Waste Generation Section of this report.

3.	<p>Name & Position: <i>Mr. Peter Sweetman</i></p>	<p>Organisation: <i>Wild Ireland Defense CLG</i></p>	<p>Date received: <i>27 October 2022</i></p>
<p>Issues raised: <i>The submission states that the CJEU has found that compliance with European Union (Good Agricultural Practice for the Protection of Waters) Regulations 2017 (S.I. 605 of 2017) cannot be considered a mitigation measure when conducting an appropriate assessment.</i></p> <p>Agency Response: The submission did not provide a reference to the Court of Justice of the European Union (CJEU) case to which it refers. However, the judgments of the CJEU form part of this application assessment, as appropriate. The landspreading of organic fertilizer was considered in carrying out AA and</p>			

	regard was had to the regulatory systems in place, i.e. <i>European Union (Good Agricultural Practice for Protection of Waters) Regulations 2022.</i>		
4.	Name & Position: <i>Aislinn Byrne</i>	Organisation: <i>None stated</i>	Date received: <i>14 December 2022</i>
	<p>Issues raised:</p> <p><i>The issues raised in the submission are as follows:</i></p> <p><i>“I am objecting to the following applications on the grounds that factory farming, or intensive agriculture, is seriously damaging the environment. The systems currently in place in the respective counties of the applicants are insufficient to deal with the current level of animal agriculture. Approving licenses for additional intensive farming would be wilfully destroying the land and the environment and putting people’s health at risk.</i></p> <p><i>Separately it is cruel to farm animals in this manner. It’s raises questions around the health of the animals and therefore the end product that is being sold to humans. It is putting smaller farmers out of business”.</i></p> <p><i>The submission goes on to list by Reg. No. all of the pig and poultry licence applications upon which the submission is to be made.</i></p> <p>Agency response:</p> <p>My assessment of this application included an Environmental Impact Assessment (EIA), an examination of the submitted Environmental Impact Assessment Report (EIAR) and my undertaking of an Environmental Impact Assessment (EIA) of the activity. The EIA Directive, among other things, sets down various factors to be considered during the EIA process for project categories such as intensive agriculture developments, and includes impacts on the following factors:</p> <ul style="list-style-type: none"> <i>(a) population and human health;</i> <i>(b) biodiversity, with particular attention to species and habitats protected under Directive 92/43/EEC and Directive 2009/147/EC;</i> <i>(c) land, soil, water, air and climate;</i> <i>(d) material assets, cultural heritage and the landscape;</i> <i>(e) the interaction between the factors referred to in points (a) to (d).</i> <p>The Agency will not grant a licence or revised licence unless it is satisfied that emissions comply with relevant emission limit values and standards prescribed under regulations.</p> <p>The submission also mentions animal cruelty concerns. Ireland has legislation governing animal welfare, which are the responsibility of the Dept. of Agriculture, Food and the Marine (DAFM).</p> <p>The submission also mentions financial implications of intensive farming over “smaller farmers”. The viability of a business, including farming, is beyond the scope of the EPA Licensing Process.</p>		
5.	Name & Position:	Organisation:	Date received:

<i>Laura Broxson</i>	<i>National Animal Rights Association</i>	<i>17 December 2022</i>
<p>Issues raised:</p> <p><i>The issues raised in the submission are as follows:</i></p> <ul style="list-style-type: none"> • <i>The submitter states that the application should be refused as it is "not ethically acceptable to kill or consume any living creature".</i> • <i>The submission states that "Ireland's ammonia emissions have not met EU limits for 7 out of the last 9 years" and that "almost all of Ireland's ammonia emissions come from agriculture". It states that "more than half are located in Monaghan and Cavan, counties already struggling with excess manure".</i> • <i>The submission goes on to include some of the damage that can be caused by ammonia pollution and PM2.5 to the environment and human beings.</i> • <i>It concludes that "for animal rights, human health and safety, and the impact it would have on the environment, these 36 applications need to be refused".</i> <p><i>The submission goes on to list by Reg. No., all of the pig and poultry licence applications upon which the submission is to be made.</i></p> <p>Agency response:</p> <ul style="list-style-type: none"> • The principle of whether or not it is ethical to consume meat is beyond the remit of the EPA. • Ireland is addressing ammonia emissions from the agricultural sector through the implementation of 'Ag Climatise – A roadmap towards Climate Neutrality'. The recommendations of this document, regarding the national reduction of ammonia levels, are considered during the assessment of licence applications. • All EPA licensed facilities are required to operate to the best available techniques (BAT) standard as specified in the Commission Implementing Decision (CID) for the intensive rearing of poultry or pigs. This includes the requirement to implement techniques for the reduction and control of ammonia emissions. • Due to the number of intensive agriculture applications/reviews and licences, especially in the Cavan/Monaghan, the EPA published guidance on how applicants should assess the predicted impact of air emissions. This has specific restrictions on applications in the Cavan/Monaghan area. <p>The assessment of this application included the assessment of emissions to air, including ammonia and dust emissions. It also included an Environmental Impact Assessment (EIA) screening, an examination of the submitted Environmental Impact Assessment Report (EIAR) and undertaking of an Environmental Impact Assessment (EIA) of the activity. Further information</p>		

	on these can be seen in the 'ammonia', 'dust' and 'EIA' sections of the "Inspector's Report" for this licence application.		
6.	Name & Position: <i>Caroline Rowley</i>	Organisation: <i>Ethical Farming Ireland</i>	Date received: <i>30 December 2022</i>
	Issues raised: <p><i>The issues raised in the submission are as follows:</i></p> <ul style="list-style-type: none"> • <i>The submitter cites the Agency's responsibilities under Section 52(2) of the Environmental Protection Agency Act 1992, in relation to the Agency's need to keep itself informed of policies and objectives of public authorities, of the requirement to have regard for the need for high standard of environmental protection and the requirement to have regard to the need for precaution in relation to potentially harmful effects of emissions.</i> • <i>The submission discusses the government's targets for reducing greenhouse gas emissions under the programme for government, DAFM's 'Ag Climatise – A Roadmap towards Climate Neutrality' (Ag Climatise) and the Climate Action Plan 2023.</i> • <i>The submission states, the Programme for Government (inter alia) commits Ireland to an average 7% per annum reduction in overall greenhouse gas emissions from 2021 to 2030 (a 51% reduction over the decade) and to achieving net zero emissions by 2050.</i> • <i>It cites the following from the government's Ag document: "In total, approximately 80% of the agricultural GHG inventory is related directly to the number of animals and the management of the manure they produce. This roadmap is based on stabilising methane emissions and a significant reduction in fertiliser related nitrous oxide emissions, leading to an absolute reduction in the agricultural greenhouse gas inventory by 2030. Any increase in biogenic methane emissions from continually increasing livestock numbers will put the achievement of this target in doubt".</i> • <i>The submission notes that the Climate Action Plan 2023, emphasises that agriculture is the largest source of Ireland's emissions (33.3%).</i> • <i>The submission notes that the application documents do not model chicken or pig population numbers; therefore it was assumed they remain stable.</i> • <i>The submission states that approval of the application is likely to exacerbate Ireland's ongoing breach of its National Emission Reduction Target relating to ammonia. It again states that the relevant documents do not appear to model ammonia emissions from pig and poultry, and instead appear to assume the populations of these livestock types remains stable.</i> • <i>The submission notes that the relevant documents do not appear to model ammonia emissions from pig and poultry, and instead appear to assume the populations of these livestock types remains stable.</i> • <i>The submission states that the increase in pig or poultry numbers proposed in the application contradicts this assumption, with the resulting increase in greenhouse gases and ammonia increasing the risk of Ireland breaching (a) the greenhouse gas emissions targets to</i> 		

which it has committed and (b) the exacerbating its existing non-compliance with ammonia targets.

- *This amounts to a failure of duty by the Agency and would breach sections 52(2)(a), (b) and (c) of the EPA Act.*
- *Ethical Farming Ireland urges the Agency to reject the application.*

Agency response:

- The Agency, in conducting its licence assessments, has regard to the government's targets for reducing greenhouse gas emissions, the Ag Climatise document, and the Climate Action Plan 2023, as detailed in this report.
- Issues in relation to climate are discussed in the EIA (Climate) section of this report in terms of Government policy, the Ag-Climatise document and the Climate Action Plan 2023. Energy efficiency is discussed in the Energy Efficiency and Resource Use section of this report.
- Ireland is addressing greenhouse gas emissions from the agricultural sector through the implementation of 'Ag Climatise – A roadmap towards Climate Neutrality'. Biogenic methane is primarily associated with ruminants, which produce methane while digesting their food, and not with pigs, which are a monogastric animal. Greenhouse gas emissions from the installation are discussed further in the EIA (Climate) section of this report.
- Ammonia emissions are discussed in the Emissions to Air (Ammonia) and EIA (Air) sections of this report. Regard to government policy and national plans are discussed in these sections.
- The EPA has published guidance on how applicants should assess the predicted impact of ammonia emissions from their proposed installation. This application has been assessed in accordance with that guidance document. The site will be required to operate in accordance with its licence requirements including BAT which will ensure minimisation of ammonia emissions. This topic is discussed further in the ammonia section and EIA sections of this report.
- The Agency is satisfied that this licence assessment meets the requirements of sections 52(2)(a), (b) and (c) of the EPA Act.

14. Consultations

14.1 Cross Office Consultation

The Environmental Licensing Programme (ELP) and the Office of Environmental Enforcement (OEE) routinely liaise in relation to the licensing of the intensive agricultural sector. This in part has informed the assessment of this application.

14.2 Transboundary Consultations

There were no transboundary consultations undertaken as there were no transboundary impacts identified.

15. Appropriate Assessment

Appendix 2 lists the European sites assessed, their associated qualifying interests and conservation objectives along with the assessment of the effects of the activity on the European sites.

A screening for Appropriate Assessment (AA) was undertaken to assess, in view of best scientific knowledge and the conservation objectives of the site, if the activity, individually or in combination with other plans or projects is likely to have a significant effect on any European Site. In this context, particular attention was paid to the European Sites at the River Boyne and River Blackwater SAC, River Boyne and River Blackwater SPA, Kilconny Bog (Cloghbally) SAC, Lough Sheelin SPA, Lough Bane and Lough Glass SAC, Girley (Drewstown) Bog SAC, White lough, Ben Loughs and Lough Doo SAC, and Moneybeg and Clareisland Bogs SAC.

The activity is not directly connected with or necessary to the management of any European Site and the Agency considered, for the reasons set out below, that it cannot be excluded, on the basis of objective information, that the activity, individually or in combination with other plans or projects, will have a significant effect on any European Site and accordingly determined that an Appropriate Assessment of the activity was required, and for this reason determined to require the applicant to submit a Natura Impact Statement.

- Air emissions have been modelled by the Agency using a screening model (SCAIL Agriculture). The model results indicated that the potential for adverse impact of emissions to air and their consequential potential impact on sensitive receptors cannot be ruled out due to elevated ammonia levels and nitrogen deposition at European sites.
- There are potential surface water pathways connecting the installation to European sites, therefore, there is potential for adverse impact of emissions to water and their consequential potential impact on sensitive receptors cannot be ruled out at European sites.

A Natura Impact Statement was received by the Agency on 05 October 2022.

An Inspector's Appropriate Assessment has been completed and has determined, based on best scientific knowledge in the field and in accordance with the European Communities (Birds and Natural Habitats) Regulations 2011 as amended, pursuant to Article 6(3) of the Habitats Directive, that the activity, individually or in combination with other plans or projects, will not adversely affect the integrity of any European Site, in particular River Boyne and River Blackwater SAC, River Boyne and River Blackwater SPA, Kilconny Bog (Cloghbally) SAC, Lough Sheelin SPA, Lough Bane and Lough Glass SAC, Girley (Drewstown) Bog SAC, White lough, Ben Loughs and Lough Doo SAC, and Moneybeg and Clareisland Bogs SAC, having regard to their conservation objectives and will not affect the preservation of these sites at favourable conservation status if carried out in accordance with this RD and the conditions attached hereto for the following reasons:

- The installation is not located within a European site.
- It is proposed that storm water run-off from the roof and paved areas will be directed into a local watercourse. There will be no other direct discharge to surface waters or groundwater within the installation boundary.
- The proposed storm water collection system includes a silt trap on all storm water lines prior to discharge of the storm water from the site.

- The risk of surface water or groundwater contamination because of accidental emissions during washing activities, or from spillage from the wash water tanks, is minimal, given the distance between the activity and a European site.
- Waste generated onsite will be handled and stored in a manner which will ensure there is no risk to European sites and will only be sent to appropriately authorised facilities.
- The litter generated at the installation has a high dry matter content.
- The litter remains within the concrete-floored covered broiler houses until all broilers are removed at the end of each batch. Therefore, there is no pathway between the litter and surface water/groundwater while the houses are stocked.
- When the houses are destocked, the litter is removed from the animal houses and removed offsite.
- Calculations supplied regarding the nutrient stocking rate of the free-range areas demonstrate that the range areas have capacity to accept the increased load when the birds are outside.
- It is proposed that wash water will be applied to farmlands in accordance with the Nitrates Regulations. It is proposed that poultry litter will be transported by a contractor to composting facilities or may be used as an organic fertiliser on farmlands in accordance with the Nitrates Regulations. The licence, if granted, relates to the site of the activity for which the licence application is made, i.e. the rearing of poultry within the installation boundary, and does not extend to the lands beyond the installation boundary on which wash water may be spread or organic fertiliser may be used.
- Activities which can take place within European sites are restricted by legislation. All persons must obtain the written consent from the relevant Minister before performing particular operations on, or affecting, particular habitats where they occur on lands or waters within the SACs and SPAs.
- The closest European sites are approximately 3.1 km away from the installation boundary (River Boyne and River Blackwater SAC and SPA) and are considered to be outside of the zone of influence of noise emissions arising at the installation.
- The installation is in a rural area where the predominant farming activities involve the rearing of livestock. There are three other EPA licensed installations within a 5 km radius of the installation, two food and drink installations and one paint manufacturer. These installations are each required to operate in accordance with the conditions of an EPA licence.
- The applicant has proposed a number of mitigation measures which comply with BAT to minimise emissions of ammonia and therefore, nitrogen deposition at the designated sites. This includes a commitment to use a low protein feed and multiphase diets for the birds. Air emissions were modelled by the applicant (as part of a NIS requested by the Agency) using a site-specific model and checked by the Agency. The modelling concluded that process emissions from the proposed bird numbers at the installation will not contribute significantly to ammonia levels at the European Sites.

In light of the foregoing reasons no reasonable scientific doubt remains as to the absence of adverse effects on the integrity of those European Sites River Boyne and River Blackwater SAC, River Boyne and River Blackwater SPA, Kilconny Bog (Cloghbally) SAC, Lough Sheelin SPA, Lough Bane and Lough Glass SAC, Girley (Drewstown) Bog SAC, White lough, Ben Loughs and Lough Doo SAC, and Moneybeg and Clareisland Bogs SAC.

16. Environmental Impact Assessment

16.1 EIA Introduction

This assessment is being undertaken in accordance with the requirements of Directive 2014/52/EU amending Directive 2011/92/EU on the assessment of the effects of certain public and private projects on the environment.

The application was accompanied by an Environmental Impact Assessment Report (EIAR).

As part of this environmental impact assessment, I have carried out an examination, analysis and evaluation of all the information provided by the applicant (including the EIAR), information received through consultation, the documents associated with the assessments carried out by Cavan County Council and the issues that interact with the matters that were considered by that authority and which relate to the activity, written submissions, as well as considering any supplementary information where appropriate. All of the documentation received was examined and I consider that the EIAR complies with the provisions of Article 5 of the 2014 EIA Directive when considered in conjunction with the additional material submitted with the application.

I am satisfied that the information contained in the EIAR has been prepared by competent experts and that the environmental effects arising as a consequence of the activity have been satisfactorily identified, described and assessed.

Having specific regard to EIA, this Inspector's Report as a whole is intended to identify, describe and assess for the Agency the likely significant direct and indirect effects of the activity on the environment, as regards the matters that come within the functions of the Agency, for each of the following environmental factors: population and human health, biodiversity, land, soil, water, air and climate, the landscape, material assets and cultural heritage.

This Inspector's Report addresses the interaction between those effects and the related development forming part of the wider project. The cumulative effects, with other developments in the vicinity of the activities have also been considered, as regards the combined effects of emissions. In addition, the vulnerability of the activity to risks of major accidents and/or disasters has been considered. The mitigation measures proposed to address the range of predicted significant effects arising from the activity have been outlined. This Inspector's Report provides conclusions to the Agency in relation to such effects.

A summary of the submissions made by third parties has been set out above in the 'Submissions' Section of this report.

I am satisfied that the public have been given early and effective opportunity to participate in the environmental decision-making procedure.

16.2 Consultation with Planning Authorities in relation to EIA

Consultation was carried out between Cavan County Council and the Agency under the relevant section of the EPA Act 1992, as amended.

Cavan County Council did not provide any observations to the Agency on the licence application and EIAR.

16.3 Consultation with other competent authorities

There was no consultation with other competent authorities in relation to this application.

16.4 Alternatives

The matter of alternatives is addressed in Chapter 3 of the EIAR. It examines several alternative sites, layout and design, size, processes, and management of by-products were considered.

As the proposal refers to an extension of existing poultry houses, there was limited scope to choose an alternate location. The proposed scale and process are sufficient to cover development and operational costs and complementary to the existing enterprise.

In this regard I consider that the matter of the examination of alternatives has been satisfactorily addressed.

16.5 Likely Significant Direct and Indirect Effects

The likely significant direct and indirect effects of the activity on the following factors as set out in Article 3 of the EIA Directive are considered in this section:

- (f) population and human health;*
- (g) biodiversity, with particular attention to species and habitats protected under Directive 92/43/EEC and Directive 2009/147/EC;*
- (h) land, soil, water, air and climate;*
- (i) material assets, cultural heritage and the landscape;*
- (j) the interaction between the factors referred to in points (a) to (d).*

16.5.1 Population & Human Health

Identification, Description and Assessment of Effects

Population and human health are mainly addressed in Chapter 4.3.1 of the EIAR. The potential direct and indirect effects on population and human health are associated with emissions to air, dust, odour, noise emissions, emissions to water, waste generation, and accidental emissions. Should emissions exceed environmental quality standards this could have implications for population and human health.

The effects identified and described above have been assessed in the following sections of the licence assessment part of this report:

- Emissions to Air;
- Emissions to Water and Ground;
- Noise;
- Waste Generation;
- Organic Fertiliser; and
- Prevention of Accidents.

There is also the potential for accidental emissions to the environment, due to human error or failure of containment infrastructure. Accidental emissions are addressed in the 'Prevention of Accidents' section of this report.

Cumulative effects of the activity in relation to population and human health have been assessed and it is considered that there is not likely to be a significant cumulative effect from the activity and other activities/developments. There are no likely significant direct, indirect or cumulative effects identified.

Mitigation and Monitoring

Mitigation measures and monitoring in relation to population and human health are detailed in the following sections of this report:

- Emissions to Air;
- Emissions to Water and Ground;
- Noise;
- Waste Generation;
- Organic Fertiliser; and
- Prevention of Accidents.

Conclusions

I have examined all the information on population and human health, provided by the applicant, received through consultations, written submissions, as well as considering any supplementary information, where appropriate. I am satisfied that the potential effects identified will be avoided, managed and mitigated by the measures identified and through the proposed conditions of the RD. I am, therefore, satisfied that the operation of the activity is not likely to have any unacceptable direct or indirect effects in terms of population and human health.

16.5.2 Biodiversity

Identification, Description and Assessment of Effects

Biodiversity is mainly addressed in Chapter 4.3.2 of the EIAR. The EIAR describes the habitats and species at and in the vicinity of the installation. The site of the application is typical of the agricultural nature of the surrounding land and will consist of an extension to the poultry houses and range area of the applicant's existing free-range poultry operation.

There are eight Natura 2000 designated sites within 20 km of the application site, the closest being 3.1 km away from the installation. The applicant also submitted a Natura Impact Statement (Refer to the Appropriate Assessment section of this report).

The potential direct and indirect effects on biodiversity are related to effects on aquatic flora and fauna and their habitats due to effects on water quality, disturbance to fauna due to noise emissions, and effects due to air emissions (e.g. ammonia emissions and nitrogen deposition). The effects identified and described above have been assessed in the following sections of this report:

- Emissions to Air;
- Emissions to Water and Ground;
- Storm water Discharges;
- Waste Generation;
- Noise;
- Organic Fertiliser; and

- Prevention of Accidents.

There is also the potential for accidental emissions to the environment, due to spillages or human error, which may impact on biodiversity. Accidental emissions are addressed in the Prevention of Accidents section earlier in this report.

Landspreading of organic fertiliser could impact on water quality; however, this occurs outside of the licensed boundary and must be carried out in accordance with the Nitrates Regulations and Animal By-product Regulations, which are monitored and controlled by DAFM and the Local Authorities (LAs). In addition, the Government's Food Vision 2030 was published in August 2021 and sets out four high level mission statements for the Agri-Food sector. This document proposes more targeted agri-environmental schemes under the next CAP Strategic Plan to protect Ireland's habitats and species from emissions from the agricultural sector. This Agri-Food Strategy (AFS) also included an Appropriate Assessment (AA) which concluded that "the adoption of the AFS would not have significant adverse effects on the integrity of any Natura 2000 sites with the inclusion of the mitigation recommendations."

Cumulative effects of the activity in relation to biodiversity have been assessed and it is considered that there is not likely to be a significant cumulative effect from the activity and other activities/developments. There are no likely significant direct, indirect or cumulative effects identified.

Mitigation and Monitoring

Mitigation measures and monitoring in relation to biodiversity are detailed in the following sections of this report:

- Emissions to Air;
- Emissions to Water and Ground;
- Storm Water Discharges;
- Waste Generation;
- Noise;
- Organic Fertiliser; and
- Prevention of Accidents

Conclusions

I have examined all the information on biodiversity, provided by the applicant, received through consultations, written submissions, as well as considering any supplementary information, where appropriate. I am satisfied that the potential effects identified will be avoided, managed and mitigated by the measures identified and through the proposed conditions of the RD. I am, therefore, satisfied that the operation of the activity is not likely to have any unacceptable direct or indirect effects in terms of biodiversity.

16.5.3 Land and Soil

Identification, Description and Assessment of Effects

Land and soil are addressed in Chapter 4.3.3 of the EIAR. Land use currently in the development area is improved agricultural grassland and the range area of the existing free-range poultry installation. Any potential contamination issues are dealt with in the 'baseline report' section of this report.

The potential direct and indirect effects on land and soil are associated with emissions to air, emissions to water, and accidental emissions. Should emissions exceed environmental quality standards this could have implications for land and soil. The

potential effects identified and described above have been assessed in the following sections of this report:

- Emissions to Air;
- Emissions to Water and Ground;
- Organic Fertiliser;
- Waste Generation;
- Prevention of Accidents; and
- Cessation of Activity.

There is also the potential for accidental emissions to the environment, due to spillages or human error, which may impact on land or soil. Accidental emissions are addressed in the 'Prevention of Accidents' section earlier in this report. Landspreading of organic fertiliser could impact on land or soil, however, this occurs outside of the licensed boundary. This must be carried out in accordance with the Nitrates Regulations and Animal By-product Regulations, which are monitored and controlled by DAFM and the Local Authorities (LAs).

Cumulative effects of the activity in relation to land and soil have been assessed and is considered that there is not likely to be a significant cumulative effect from the activity and other activities/developments. There are no likely significant direct, indirect or cumulative effects identified.

Mitigation and Monitoring

Mitigation measures and monitoring in relation to land and soil are detailed in the following sections of this report:

- Emissions to Air;
- Emissions to Water and Ground;
- Organic Fertiliser;
- Waste Generation;
- Prevention of Accidents; and
- Cessation of Activity.

Conclusions

I have examined all the information on land and soil, provided by the applicant, received through consultations, written submissions, as well as considering any supplementary information, where appropriate. I am satisfied that the potential effects identified will be avoided, managed and mitigated by the measures identified and through the proposed conditions of the RD. I am, therefore, satisfied that the operation of the activity is not likely to have any unacceptable direct or indirect effects on land and soil.

16.5.4 Water

Identification, Description and Assessment of Effects

Water is mainly addressed in Chapter 4.3.5 of the EIAR. The site is within the Cavan groundwater body (Ref: IE_NW_G_061) which has a Water Framework Status of 'good' and a vulnerability of 'extreme vulnerability'.

The site lies within the Boyne catchment area and Blackwater[Kells]_SC_020 sub-catchment. Storm water from the roof and yard area will discharge via silt traps to the Lislea Stream which runs along the boundary of the site.

There are no emissions to water or ground from the site. The potential direct and indirect effects on water relate to storm water discharges and groundwater abstraction. Should the discharges cause an exceedance of Water Quality Standards in the receiving water, this could have potential effects on water quality, aquatic biodiversity and human health. The effects identified and described above have been assessed in the following sections of this report:

- Emissions to Water and Ground;
- Storm Water Discharges;
- Organic Fertiliser; and
- Prevention of Accidents.

There is also the potential for accidental emissions to water or groundwater to occur. The likelihood of accidental emissions to water is considered low in light of the measures outlined in the 'Prevention of Accidents' section above and in light of the conditions in the RD. This is addressed in Prevention of Accidents section of this report.

The site is in a rural area with most of the developments in the vicinity of the installation being dwelling houses and farmyards. It is noted that there are no other EPA-licensed intensive agriculture installations within 5 km of the installation. There are three other EPA licensed activities, two food and drink installations and one paint manufacturer, within 5 km of the installation. These installations are each required to operate in accordance with the conditions of an EPA licence. Due to the nature of those activities and the controls in place, it is considered that there will be no significant cumulative effect from storm water discharges from the activity and from other activities/developments in the area.

Landspreading of organic fertiliser, which occurs outside of the licensed boundary, could cause pollution of surface waters or groundwater. To prevent this, the application of fertilisers to land is controlled by the Nitrates Regulations. These give legal effect in Ireland to the Nitrates Directive and to our Nitrates Action Programme (NAP) and controls the management and application of livestock manure and other fertilisers. The NAP is required to be reviewed every four years. In 2022, the Department of Housing, Local Government and Heritage undertook an Appropriate Assessment of the current NAP (5th NAP 2022-2025), which included a Natura Impact Statement (February 2022) for Irelands NAP, and concluded that the NAP would not result in adverse effects on European site integrity either alone or in combination with other plans and programmes.

As mentioned earlier, the AFS sets out four high level mission statements for the sector. One of its mission statements is to become a 'Climate smart, environmentally sustainable Agri-food sector'. This target is underpinned by seven goals one of which, to "Protect High Status Sites and Contribute to Protection & Restoration of Good Water Quality and Healthy Aquatic Ecosystems". The report identified five actions under this goal including protecting water from agricultural pollution and reduce use of agricultural pesticides. Its associated AA concluded "the adoption of the AFS would not have significant adverse effects on the integrity of any Natura 2000 sites with the inclusion of the mitigation recommendations."

The National River Basin Management Plan (2018-2021) was published in April 2018. Over the period of this river basin planning cycle, there are measures being undertaken to meet the environmental objectives of the WFD. These include measures such as implementation of the Nitrates Action Programme (Nitrates Regulations) and

associated inspection regime. Targeted monitoring as envisaged under the Plan allied with multi-party enforcement (EPA/LA/DAFM) provides an early warning of potential problems/improvements and of the possible need to adapt the Plan to ensure protection of our waters.

Cumulative effects of the activity in relation to water have been assessed and is considered that there is not likely to be a significant cumulative effect from the activity and other activities/developments. There are no likely significant direct, indirect or cumulative effects identified.

Mitigation and Monitoring

Mitigation measures and monitoring in relation to water are detailed in the following sections of this report:

- Emissions to Water and Ground;
- Storm Water Discharges;
- Organic Fertiliser; and
- Prevention of Accidents.

Conclusions

I have examined all the information on water (including Storm Water, Emissions to Water and Groundwater) provided by the applicant, received through consultations, written submissions, as well as considering any supplementary information, where appropriate. I am satisfied that the potential effects identified will be avoided, managed and mitigated by the measures identified and through the proposed conditions of the RD. I am, therefore, satisfied that the operation of the activity is not likely to have any unacceptable direct or indirect effects on water.

16.5.5 Noise

Identification, Description and Assessment of Effects

Noise is mainly addressed in Chapter 4.1.3 of the EIAR. The installation is a rural, predominantly agricultural location. The potential direct and indirect effects of noise associated with the operation of the activity is the potential to cause nuisance for those living near the activity or to affect noise sensitive species near the site. The effects have been assessed in the 'noise' section of this report.

There is also the potential for accidental noise emissions. This is addressed in the 'Prevention of Accidents' section of this report.

Cumulative effects of the activity in relation to noise have been assessed and is considered that there is not likely to be a significant cumulative effect from the activity and other activities/developments. There are no likely significant direct, indirect or cumulative effects identified.

Mitigation and Monitoring

Mitigation measures and monitoring in relation to noise are detailed in the 'Noise' section of this report.

Conclusions

I have examined all the information on noise provided by the applicant, received through consultations, written submissions, as well as considering any supplementary information, where appropriate. I am satisfied that the potential effects identified will be avoided, managed and mitigated by the measures identified and through the

proposed conditions of the RD. I am, therefore, satisfied that the operation of the activity is not likely to have any unacceptable direct or indirect effects in terms of noise.

16.5.6 Air

Identification, Description and Assessment of Effects

Air is mainly addressed in Chapter 4.3.6 of the EIAR. The potential direct and indirect effects on air are associated with emissions to air of ammonia, dust and odour from the poultry housing, and dust from the installation yard. Should emissions cause an exceedance of air quality standards or critical levels/loads, this could have implications for air quality, human health and biodiversity within and beyond the site boundary. General site dust and odour emissions have the potential to impact human health and cause nuisance.

The effects identified and described above have been assessed in the following sections of this report:

- Emissions to Air;
- Organic Fertiliser; and
- Prevention of Accidents.

There is also the potential for accidental emissions to the environment. This is addressed in the 'Prevention of Accidents' section of this report.

In relation to cumulative effects, it is noted that there are no other EPA-licensed intensive agriculture installations within 5 km of the installation. There are three other EPA licensed activities, two food and drink installations and one paint manufacturer, within 5 km of the installation.

Emissions to air from these activities have been considered during the licensing process for each of these installations and as they are required to comply with the conditions of their licences, these installations should not have any significant emissions of odour, dust or ammonia under normal operations. In this assessment, it has already been determined that air emissions from the installation will not significantly affect local air quality.

According to *'Ireland's Informative Inventory Report 2022'* (EPA 2022), which contains the most recent data, ammonia emissions in 2020 from the poultry sector were 4.91 kt (or 4% of Ireland's National emissions). This installation will emit 4.4 tonnes per annum. In December 2020, the Government issued 'Ag Climatise – A Roadmap towards Climate Neutrality'. This is a roadmap of actions for agriculture to cut GHG emissions as well as ammonia emissions significantly over the next decade, and up to 2050. The road map lists actions aiming to reduce the cumulative impact of ammonia emissions from the sector as a whole.

As mentioned earlier, the AFS sets out four high level mission statements for the sector one of which is to become a 'Climate smart, environmentally sustainable Agri-food sector'. Another of its seven goals is to develop a climate neutral food system by 2050 and improve air quality. This will build on the Ag Climatise roadmap and it is proposed that detailed plans to manage the sustainable environmental footprint of the dairy and the beef sectors will be produced in 2022 reducing total emissions from the sector. As stated, its associated AA concluded "the adoption of the AFS would not have significant adverse effects on the integrity of any Natura 2000 sites with the inclusion of the mitigation recommendations."

As detailed previously in the 'Emissions to Air' section of this report, Ireland is addressing ammonia emissions (including emissions from landspreading) in accordance with the NECD and S.I. No. 232/2018, European Union (National Emission Ceilings) Regulations 2018. The Code of Good Agricultural Practice as referred to earlier in this report contains guidelines on topics including *inter alia* low emission spreading and fertiliser management, as well as animal feed and housing.

Approximately 3.4% of the ammonia emissions that originate from landspreading in Ireland come from the poultry sector. This equates to 1% of Ireland's total ammonia emissions. The organic fertiliser generated by the activity represents a negligible quantity relative to the total quantity of organic fertiliser arising from the livestock sectors in Ireland (cattle, sheep, pigs and poultry).

Cumulative effects of the activity in relation to air have been assessed and it is considered that there is not likely to be a significant cumulative effect from the activity and other activities/developments. There are no likely significant direct, indirect or cumulative effects identified.

Mitigation and Monitoring

Mitigation measures and monitoring in relation to air, including ammonia, dust and odour, are detailed in the following sections of this report:

- Emissions to Air;
- Organic Fertiliser; and
- Prevention of Accidents.

Conclusions

I have examined all the information on Air (including ammonia, dust and odour) provided by the applicant, received through consultations, written submissions, as well as considering any supplementary information, where appropriate. I am satisfied that the potential effects identified will be avoided, managed and mitigated by the measures identified and through the proposed conditions of the RD. I am, therefore, satisfied that the operation of the activity is not likely to have any unacceptable direct or indirect effects in terms of Air (including ammonia, dust and odour).

16.5.7 Climate

Identification, Description and Assessment of Effects

Chapter 4.3.7 of the EIAR addresses Climate. Climate change is a significant global issue which affects weather and environmental conditions (air, water and soil) which consequently affects population and human health, material assets, cultural heritage, the landscape and biodiversity. Climate change is caused by warming of the climate system by enhanced levels of atmospheric greenhouse gases (GHG) due to human activities. GHGs are carbon dioxide (CO₂), methane (CH₄), nitrous oxide (N₂O), hydrofluorocarbons (HFCs), perfluorocarbons (PFCs), nitrogen trifluoride (NF₃) and sulphur hexafluoride (SF₆).

The installation does not operate under a GHG Emissions Permit in accordance with the European Communities (Greenhouse Gas Emissions Trading) Regulations 2012, (S.I. 490 of 2012 and amendments). Therefore, this site is not subject to the European Communities (Greenhouse Gas Emissions Trading) Regulations 2012, (S.I. 490 of 2012 and amendments) (the EU ETS). It is therefore a requirement of the IED to investigate how direct emissions of CO₂ might be minimised.

Indirect emissions of CO₂ may arise due to the use of electricity from the national grid. These emissions are covered under the EU ETS at the generating plant but the applicant is also required to address electricity usage as part of energy efficiency management.

In December 2022, the Irish Government released the 'Climate Action Plan 2023', under the 'Climate Action and Low Carbon Development (Amendment) Act 2021', which will support Ireland's transition to Net Zero and achieve a climate neutral economy by no later than 2050.

The potential direct and indirect effects on climate are associated with storage and spreading of organic fertiliser (litter) (nitrous oxide) and usage of fossil fuels (carbon dioxide).

However, any discussion of GHG emissions must be extended to national and global climate impact.

As part of the non-ETS (Emissions Trading Scheme) sector the GHG emissions from this site are covered by Ireland's commitments under the Effort Sharing Decision (Decision No 406/2009/EC) and the Effort Sharing Regulation (Regulation (EU) 2018/842) from 2021.

Given the small quantity of climate altering substances that could be released from the activity, in a national context, I consider that the impact of any emissions from the installation on climatic considerations should be minimal.

It is considered that the likelihood of accidental emissions occurring which could affect climate is low in light of the measures outlined in the 'Prevention of Accidents' section above and the proposed conditions in the RD. Therefore, there are no likely significant direct, indirect or cumulative effects identified.

Mitigation and Monitoring

Mitigation measures and monitoring in relation to climate are detailed in the following sections of this report:

- Emissions to Air;
- Organic Fertiliser;
- Prevention of Accidents; and
- Energy Efficiency.

Conditions 2 and 7 of the RD deal with energy efficiency matters at the installation.

Conclusions

I have examined all the information on climate provided by the applicant, received through consultations, written submissions, as well as considering any supplementary information, where appropriate. I am satisfied that the potential effects identified will be avoided, managed and mitigated by the measures identified and through the proposed conditions of the RD. I am, therefore, satisfied that the operation of the activity is not likely to have any unacceptable direct or indirect effects in terms of air and climatic factors.

16.5.8 Material Assets, Cultural Heritage and the Landscape

16.5.8.1 Material Assets (including resource use and waste generation)

Identification, Description and Assessment of Effects

Chapter 4.3.10 of the EIAR addresses Material Assets, and include information on traffic, transport, agricultural and non-agricultural property, and resources (both natural and others) such as energy and water. Material assets such as roads and traffic and built services are dealt with in the decision of the planning authority to grant permission for the development and are not controlled by the Agency. The planning authority has considered the effect to be acceptable.

The use of natural resources by the activity will not be significant. There are sufficient supplies of electricity and water to serve the requirements of the development. These matters are dealt with in the decision of the planning authority to grant planning permission for the developments onsite. The production of waste by the activity is assessed in the 'Waste Generation' section of this report.

The effects identified and described above have been assessed in the following section of this report:

- Waste Generation; and
- Energy Efficiency and Resource Use.

No significant cumulative effects on material assets have been identified. Therefore, there are no likely significant direct, indirect or cumulative effects identified.

Mitigation and Monitoring

Mitigation measures and monitoring in relation to material assets are detailed in the following sections of this report:

- Waste Generation;
- Energy Efficiency and Resource Use.

Material Assets Conclusions

I have examined all the information on material assets provided by the applicant, received through consultations, written submissions, as well as considering any supplementary information, where appropriate. I am satisfied that the potential effects identified will be avoided, managed and mitigated by the measures identified and through the proposed conditions of the RD. I am, therefore, satisfied that the operation of the activity is not likely to have any unacceptable direct or indirect effects in terms of Material Assets.

The planning authority has also identified, described and assessed the likely significant direct and indirect effects of the development on material assets. Their assessment concluded that "the design and alignment of the proposed development is also consistent with the existing development".

The RD does not propose to include any additional mitigation measures in relation to material assets.

16.5.8.2 Cultural Heritage

Identification, Description and Assessment of Effects

Chapter 4.3.9 of the EIAR addresses the potential direct and indirect effects on cultural heritage. Any loss of archaeological or architectural heritage could impact negatively on human beings. These matters are dealt with in the decision of the planning authority to grant planning permission for the developments onsite and are not controlled by the Agency. The planning authority has considered the effect to be acceptable.

There are no buildings or features of architectural significance and no known archaeological features at or near the site of the installation. There is a ringfort 375 m south west of the site. It is very difficult to envisage any pathway by which emissions from the operation of the activity could impact any feature which might be present.

No significant cumulative effects on the cultural heritage have been identified. Therefore, there are no likely significant direct, indirect or cumulative effects identified.

Mitigation and Monitoring

There are no specific mitigation measures or monitoring proposed in the RD.

Cultural Heritage Conclusions

The Planning Authority has identified, described and assessed the likely significant direct and indirect effects of the development on cultural heritage. Their assessment concluded that "The nearest recorded archaeological monument is a ringfort, whose buffer zone is situated 375 m south west of the application site. This separation distance is sufficient".

The RD does not propose to include any additional mitigation measures in relation to cultural heritage.

16.5.8.3 The Landscape

Identification, Description and Assessment of Effects

The potential direct and indirect effects on the landscape are described in Chapter 4.3.8 of the EIAR. Any disturbance of the landscape has the potential to impact on human beings and their enjoyment of the surrounding area due to visual impacts. These matters are dealt with in the decision of the planning authority to grant planning permission for the developments onsite and are not controlled by the Agency. The planning authority has considered the effects to be acceptable.

The installation is located in a rural, predominantly agricultural area. Emissions from the operation of the activity will not affect the agricultural landscape of the area.

No significant cumulative effects on the landscape have been identified. Therefore, there are no likely significant direct, indirect or cumulative effects identified.

Mitigation and Monitoring

There are no specific mitigation measures or monitoring proposed in the RD.

The Landscape Conclusions

The Planning Authority has identified, described and assessed the likely significant direct and indirect effects of the development on the landscape. Their assessment concluded that "the proposed extension to the two existing poultry houses at this location can be absorbed into the landscape without undue impact on the character or quality of that landscape, mainly because this is an expansion of an existing site".

The RD does not propose to include any additional mitigation measures in relation to landscape.

16.5.8.4 Overall Conclusions for Material Assets, Cultural Heritage and the Landscape

I have examined all the information on material assets, cultural heritage and the landscape provided by the applicant, received through consultations, written submissions, as well as considering any supplementary information, where appropriate. I am satisfied that the potential effects identified will be avoided, managed and mitigated by the measures identified. I am, therefore, satisfied that the operation of the activity is not likely to have any unacceptable direct or indirect effects in terms of material assets, cultural heritage and the landscape.

16.5.9 Interactions Between Environmental Factors

Interactions of effects are considered in Chapter 4.7. The most significant interactions between the factors as a result of the activity are summarised below.

Population and human health, air, and biodiversity

Potential effects from emissions to air may impact on human beings, air quality and flora and fauna as demonstrated in the 'Emissions to Air' section above. As demonstrated such effects are considered not to be likely or significant.

Water, soil, and biodiversity

Accidental discharges of wash water or other substances to ground may directly and indirectly affect soil, groundwater quality, surface water quality downstream, aquatic habitats and aquatic flora and fauna. Indirect effects on soil, groundwater quality, surface water quality, habitats and flora and fauna may arise from landspreading wash water which arises from the activity. As demonstrated in the 'Emissions to Water and Ground' section above, such effects are not considered to be likely or significant.

Conclusions

I have considered the interactions between population and human health, biodiversity, land, soil, water, air, climate, material assets, cultural heritage and landscape, and the interaction of the likely effects identified throughout this report. I am satisfied that the potential effects identified will be avoided, managed and mitigated by the measures identified and through the proposed conditions of the RD. I am, therefore, satisfied that the operation of the activity is not likely to have any unacceptable direct or indirect effects in terms of the interaction between the foregoing environmental factors.

16.5.10 Vulnerability of the Project to Risks of Major Accidents and/or Disasters

Chapter 4.4 of the EIAR describes the expected effects deriving from the vulnerability of the activity to risks of major accidents and/or disasters that are relevant to the activity.

The potential risk of effects from accidents and/or disasters is limited due to the innate nature of the production system and activities onsite. There are no significant high risk/hazardous products used, produced and/or released by the proposed development which would pose a risk outside of the site boundary as a result of any accident/disaster.

The Seveso Directive⁹ and Regulations are not applicable at the installation. The risks of accidents associated with the activity are dealt with in the 'Prevention of Accidents' and 'Cessation of Activity' sections of this report. The applicant assessed the vulnerability of the project and determined that due to the nature of the processes onsite, no significant risks occur and consequently, no specific mitigation measures have been proposed in relation to these effects.

Mitigation and Monitoring

There are no specific mitigation measures proposed in relation to major accidents and/or disasters at the installation.

Conclusions

I have examined all the information on major accidents and/or disasters provided by the applicant, received through consultations, written submissions, as well as considering any supplementary information, where appropriate. I am satisfied that the potential effects identified will be avoided, managed and mitigated by the measures identified and through the proposed conditions of the RD. I am, therefore, satisfied that the operation of the activity is not likely to have any unacceptable direct or indirect effects in terms of major accidents and/or disasters.

16.6 Reasoned Conclusion on the significant effects

Having regard to the examination of environmental information contained above, and in particular to the content of the EIAR and supplementary information provided by the applicant, and the submissions from the planning authority and third parties in the course of the application, it is considered that the potential significant direct and indirect effects of the activity on the environment are as follows:

- Emissions to air;
- Noise emissions; and
- Accidental leakages or spills.

Having assessed those potential effects, I have concluded as follows:

- Emissions to air will be mitigated through: imposing emission limit values to comply with the CID; and implementing monitoring, maintenance and control measures;
- Noise emissions will be mitigated through: imposing daytime, evening-time and night-time noise limits at noise sensitive locations; and implementing monitoring, maintenance and control measures; and
- Accidental leakages or spills will be mitigated through: inspection and maintenance of bunds and tanks; and accident and emergency requirements specified in the RD.

Having regard to the effects (and interactions) identified, described and assessed throughout this report, I consider that the monitoring, mitigation and preventative

⁹ Directive 2012/18/EU of the European Parliament and of the Council of 4 July 2012 on the control of major-accident hazards involving dangerous substances, amending and subsequently repealing Council Directive 96/82/EC.

measures proposed will enable the activity to operate without causing environmental pollution, subject to compliance with the RD. The conditions of the RD and the mitigation measures proposed will significantly reduce the likelihood of accidental emissions occurring and limit the environmental consequences of an accidental emission should one occur.

17. EPA Charges

The annual enforcement charge recommended in the RD is €2,241, which reflects the anticipated enforcement effort required and the cost of monitoring.

18. Recommendation

The Agency, in considering an application for a licence or the review of a licence, shall have regard to Section 83 of the EPA Act. The Agency shall not grant a licence or revised licence unless it is satisfied that emissions comply with relevant emission limit values and standards prescribed under regulation. In setting such limits and standards, the Agency must ensure they are established based on the stricter of either, or both, the limits and controls required under BAT, and those required to comply with any relevant environmental quality standard. The Agency shall perform its functions in a manner consistent with Section 15 of the Climate Action and Low Carbon Development Act 2015 as amended.

The RD specifies the necessary measures to provide that the installation shall be operated in accordance with the requirements of Section 83(5) of the EPA Act, and has regard to the AA and the EIA. The assessment is consistent with Section 15 of the Climate Action and Low Carbon Development Act 2015 as amended. The RD gives effect to the requirements of the EPA Act, as amended and has regard to submissions made.

I recommend that a Proposed Determination be issued subject to the conditions and for the reasons as drafted in the RD.

Signed



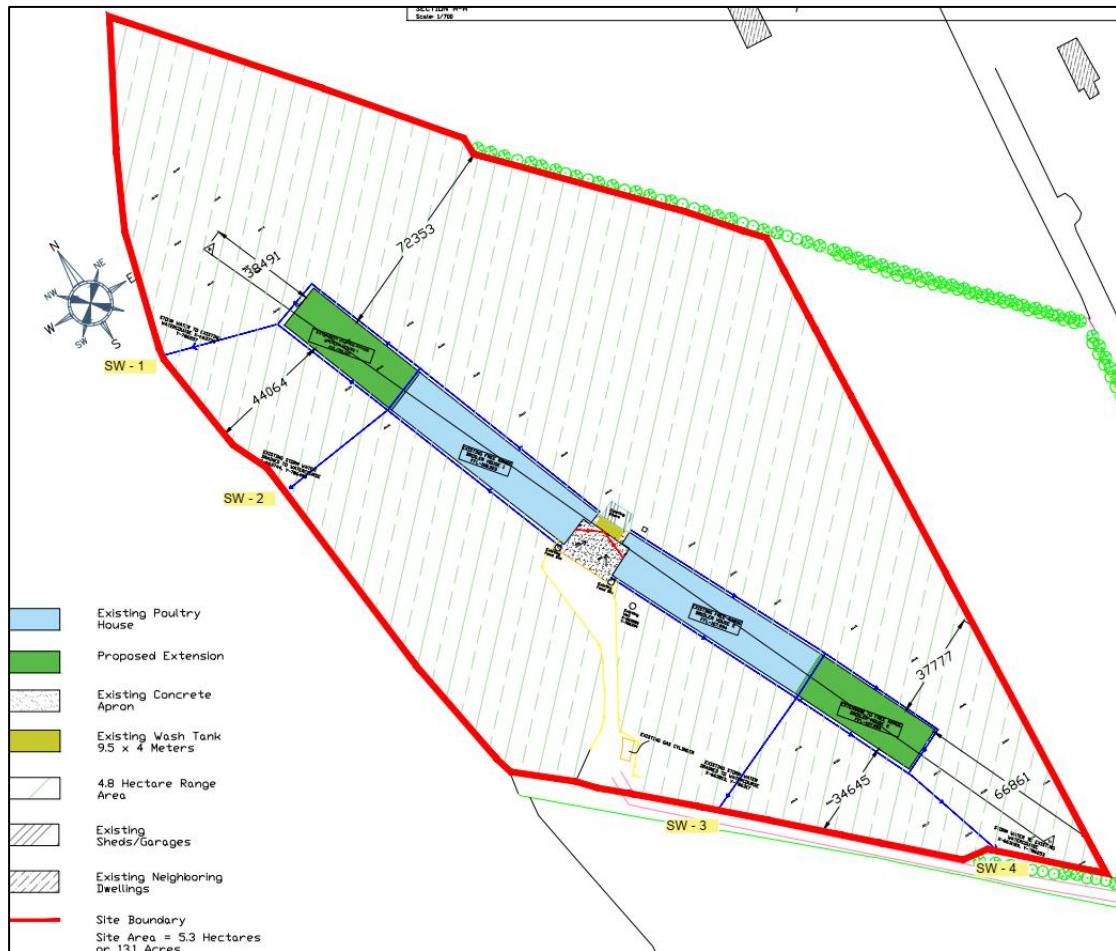
Philip Stack, ELP Inspector

Procedural Note

In the event that no objections are received to the Proposed Determination on the application, a licence will be granted in accordance with Section 87(4) of the Environmental Protection Agency Acts 1992 as amended, as soon as may be after the expiration of the appropriate period.

Appendices

Appendix 1: Maps



Detail from Drawing No. 01/001 titled 'Proposed Extensions to Poultry Houses', received by the Agency on 27 May 2022, as part of the application.

Appendix 2: AA table

Appendix 2:Table: Assessment of the effect(s) of the activity on European sites and proposed mitigation measures.

Site Code	Site Name	Qualifying Interests (* denotes a priority habitat)	Conservation Objectives	Assessment
002299	River Boyne and River Blackwater SAC	<p>Habitats 7230 Alkaline fens 91E0 Alluvial forests with <i>Alnus glutinosa</i> and <i>Fraxinus excelsior</i> (Alno-Padion, Alnion incanae, Salicion albae)*</p> <p>Species 1099 River Lamprey (<i>Lampetra fluviatilis</i>) 1106 Salmon (<i>Salmo salar</i>) 1355 Otter (<i>Lutra lutra</i>)</p>	As per NPWS (2021) Conservation objectives: River Boyne and River Blackwater SAC [002299]. Version 1.0 National parks and Wildlife Service, Department of Housing, Local Government and Heritage.	<p>The site is located 3.1 km to the south of the installation.</p> <p>I am satisfied beyond reasonable scientific doubt that ammonia emissions from the project site will not cause an impact on the qualifying interests for this European Site.</p> <p>I am satisfied beyond reasonable scientific doubt that storm water discharges will not cause an impact on this European Site due to any potential hydrological connectivity of the project site with the European site being in excess of 6 km.</p> <p>The project site is not located within the vicinity of any known breeding site for River Lamprey (<i>Lampetra fluviatilis</i>), Salmon (<i>Salmo salar</i>), and Otter (<i>Lutra lutra</i>) at this European site.</p> <p>I am satisfied beyond reasonable scientific doubt that ammonia emissions or storm water discharges associated with the changes to the activity from the project site will not cause an impact on the conservation objectives for this European Site.</p>
004232	River Boyne and River Blackwater SPA	<p>Birds A229 Kingfisher (<i>Alcedo atthis</i>)</p>	As per NPWS (2022) Conservation objectives for River Boyne and River Blackwater SPA [004232]. Conservation	<p>The site is located 3.1 km to the south of the installation.</p> <p>I am satisfied beyond reasonable scientific doubt that ammonia emissions from the project site will not cause an impact on the qualifying interests for this European Site.</p>

Site Code	Site Name	Qualifying Interests (* denotes a priority habitat)	Conservation Objectives	Assessment
			Objectives. Generic version 9.0. Department of Housing, Local Government and Heritage.	<p>I am satisfied beyond reasonable scientific doubt that storm water discharges will not cause an impact on this European Site due to any potential hydrological connectivity of the project site with the European site being in excess of 6 km.</p> <p>The project site is not located within the vicinity of any known breeding site for Kingfisher (<i>Alcedo atthis</i>) at this European site.</p> <p>I am satisfied beyond reasonable scientific doubt that ammonia emissions or storm water discharges associated with the changes to the activity from the project site will not cause an impact on the conservation objectives for this European Site.</p>
000006	Killyconny (Cloghbally) Bog SAC	Habitats 7110 Active raised bogs* 7120 Degraded raised bogs still capable of natural regeneration	As per NPWS (2015) Conservation objectives for Killyconny (Cloghbally) Bog SAC [000006]. Version 1.0. National Parks and Wildlife Service, Department of Arts, Heritage and the Gaeltacht.	<p>The site is located 4.9 km to the east of the installation.</p> <p>I am satisfied beyond reasonable scientific doubt that ammonia emissions from the project site will not cause an impact on the qualifying interests for this European Site.</p> <p>I am satisfied beyond reasonable scientific doubt that storm water discharges will not cause an impact on this European Site due to the lack of hydrological connectivity of the project site with the European site.</p> <p>I am satisfied beyond reasonable scientific doubt that ammonia emissions or storm water discharges associated with the changes to the activity from the project site will not cause an impact on the conservation objectives for this European Site.</p>
004065	Lough Sheelin SPA	Birds A067 Goldeneye (<i>Bucephala clangula</i>) A061 Tufted Duck (<i>Aythya fuligula</i>)	NPWS (2021) Conservation objectives for Lough	The site is located 16.4 km to the west of the installation.

Site Code	Site Name	Qualifying Interests (* denotes a priority habitat)	Conservation Objectives	Assessment
		<p>A059 Pochard (<i>Aythya ferina</i>) A005 Great Crested Grebe (<i>Podiceps cristatus</i>)</p> <p>Habitats Wetlands</p>	<p><i>Sheelin SPA [004065] Generic Version 8.0. Department of Housing, Local Government and Heritage.</i></p>	<p>I am satisfied beyond reasonable scientific doubt that ammonia emissions from the project site will not cause an impact on the qualifying interests for this European Site.</p> <p>I am satisfied beyond reasonable scientific doubt that storm water discharges will not cause an impact on this European Site due to the lack of hydrological connectivity of the project site with the European site.</p> <p>The project site is not located within the vicinity of any known breeding site for Goldeneye (<i>Bucephala clangula</i>), Tufted Duck (<i>Aythya fuligula</i>), Pochard (<i>Aythya ferina</i>), or Great Crested Grebe (<i>Podiceps cristatus</i>) at this European site.</p> <p>I am satisfied beyond reasonable scientific doubt that ammonia emissions or storm water discharges associated with the changes to the activity from the project site will not cause an impact on the conservation objectives for this European Site.</p>
002120	Lough Bane and Lough Glass SAC	<p>Habitats 3140 Hard oligo-mesotrophic waters with benthic vegetation of Chara spp.</p> <p>Species 1092 White-clawed Crayfish (<i>Austropotamobius pallipes</i>)</p>	<p><i>NPWS (2021) Conservation Objectives: Lough Bane and Lough Glass SAC [002120]. Version 1. National Parks and Wildlife Service, Department of Housing, Local Government and Heritage.</i></p>	<p>The site is located 17.1 km to the south of the installation.</p> <p>I am satisfied beyond reasonable scientific doubt that the reduced ammonia emissions associated with the changes to the activity will reduce any impact on the qualifying interests for this European Site.</p> <p>I am satisfied beyond reasonable scientific doubt that storm water discharges will not cause an impact on this European Site due to the lack of hydrological connectivity of the project site with the European site.</p> <p>The project site is not located within the vicinity of any known breeding site for White-clawed Crayfish (<i>Austropotamobius pallipes</i>) at this European site.</p>

Site Code	Site Name	Qualifying Interests (* denotes a priority habitat)	Conservation Objectives	Assessment
				I am satisfied beyond reasonable scientific doubt that ammonia emissions or storm water discharges associated with the changes to the activity from the project site will not cause an impact on the conservation objectives for this European Site.
002203	Girley (Drewstown) Bog SAC	Habitats 7120 Degraded raised bogs still capable of natural regeneration	NPWS (2022) Conservation objectives for Girley (Drewstown) Bog SAC [002203]. First Order Site-specific Conservation Objectives Version 1.0. Department of Housing, Local Government and Heritage.	<p>The site is located 17.3 km to the south of the installation.</p> <p>I am satisfied beyond reasonable scientific doubt that the reduced ammonia emissions associated with the changes to the activity will reduce any impact on the qualifying interests for this European Site.</p> <p>I am satisfied beyond reasonable scientific doubt that storm water discharges will not cause an impact on this European Site due to the lack of hydrological connectivity of the project site with the European site.</p> <p>I am satisfied beyond reasonable scientific doubt that ammonia emissions or storm water discharges associated with the changes to the activity from the project site will not cause an impact on the conservation objectives for this European Site.</p>
001810	White Lough, Ben Loughs and Lough Doo SAC	Habitats 3140 Hard oligo-mesotrophic waters with benthic vegetation of Chara spp. Species 1092 White-clawed Crayfish (<i>Austropotamobius pallipes</i>)	NPWS (2021) Conservation Objectives: White Lough, Ben Loughs and Lough Doo SAC [001810]. Version 1. National Parks and Wildlife Service, Department of Housing, Local	<p>The site is located 17.6 km to the southwest of the installation.</p> <p>I am satisfied beyond reasonable scientific doubt that the reduced ammonia emissions associated with the changes to the activity will reduce any impact on the qualifying interests for this European Site.</p> <p>I am satisfied beyond reasonable scientific doubt that storm water discharges will not cause an impact on this European Site due to the lack of hydrological connectivity of the project site with the European site.</p>

Site Code	Site Name	Qualifying Interests (* denotes a priority habitat)	Conservation Objectives	Assessment
			<i>Government and Heritage.</i>	<p>The project site is not located within the vicinity of any known breeding site for White-clawed Crayfish (<i>Austropotamobius pallipes</i>) at this European site.</p> <p>I am satisfied beyond reasonable scientific doubt that ammonia emissions or storm water discharges associated with the changes to the activity from the project site will not cause an impact on the conservation objectives for this European Site.</p>
002340	Moneybeg and Clareisland Bogs SAC	<p>Habitats</p> <p>7110 Active raised bogs*</p> <p>7120 Degraded raised bogs still capable of natural regeneration</p> <p>7150 Depressions on peat substrates of the Rhynchosporion</p>	<p><i>NPWS (2016) Conservation Objectives: Moneybeg and Clareisland Bogs SAC 002340. Version 1. National Parks and Wildlife Service, Department of Arts, Heritage and the Gaeltacht.</i></p>	<p>The site is located 18.6 km to the west of the installation.</p> <p>I am satisfied beyond reasonable scientific doubt that the reduced ammonia emissions associated with the changes to the activity will reduce any impact on the qualifying interests for this European Site.</p> <p>I am satisfied beyond reasonable scientific doubt that storm water discharges will not cause an impact on this European Site due to the lack of hydrological connectivity of the project site with the European site.</p> <p>I am satisfied beyond reasonable scientific doubt that ammonia emissions or storm water discharges associated with the changes to the activity from the project site will not cause an impact on the conservation objectives for this European Site.</p>

Appendix 3: Relevant Legislation

The following European instruments which have been transposed into Irish legislation are regarded as relevant to this application assessment and have been considered in the drafting of the Recommended Determination.
National Emissions Ceilings Directive (2016/2284)
Industrial Emissions Directive (IED) (2010/75/EU)
Environmental Impact Assessment (EIA) Directive (2011/92/EU as amended by 2014/52/EU)
Habitats Directive (92/43/EEC) & Birds Directive (79/409/EC)
Water Framework Directive [2000/60/EC]
Waste Framework Directive (2008/98/EC)
Air Quality Directives (2008/50/EC and 2004/107/EC)
Groundwater Directive (80/68/EEC) and 2006/118/EC
Environmental Liability Directive (2004/35/CE)
Regulation (EC) No 1069/2009, as amended (Animal By-products Regulation)
Nitrates Directive (91/676/ EEC)
Energy Efficiency Directive (2018/2002/EU)

Appendix 4: Other CIDs/BREF/BAT documents relevant to this assessment

Commission Implementing Decisions	Publication Date
COMMISSION IMPLEMENTING DECISION of 15 February 2017 establishing best available techniques (BAT) conclusions, under Directive 2010/75/EU of the European Parliament and of the Council, for the intensive rearing of poultry or pigs (2017/302/EU)	February 2017
Sectoral BREF	Publication date
Reference Document on the Best Available Techniques for the Intensive Rearing of Poultry or Pigs	July 2017
Horizontal BREF	Publication date
Reference Document on the Best Available Techniques on Emissions from Storage	July 2006
Reference Document on the Best Available Techniques for Energy Efficiency	February 2009