

TECHNICAL KNOWLEDGE

Kilsaran Concrete is a large and long-established quarrying company with experience of operating waste recovery facilities. The company currently holds two EPA Waste Licences, one Waste Recovery Permit and one Certificate of Registration.

The company currently holds EPA Waste Licences for inert soil and stone waste recovery facilities located at a former quarry at Tullykane, Kilmessan, Co. Meath (Ref. W0296-01) and at a former pit at Halverstown, Kilcullen, Co. Kildare (W0300-01). These licences provide for the recovery of soil and stone through placement on land and its beneficial use in the backfilling and restoration of the voids created by extractive activities.

The company also holds a Waste Facility Permit in respect of a construction and demolition waste recovery facilities at Ballinascorney Quarry, South County Dublin (WFP-DS-11-0009-05) and

Prior to obtaining a waste licence for inert soil and stone waste recovery at Halverstown, some initial backfilling and restoration works were authorised by way of waste facility permit from Kildare County Council (WFP-KE-0016-085-01). The permit lapsed and was superseded by the waste licence in respect of the facility when it was issued by the EPA in July 2020.

The Certificate of Registration is held in respect of construction and demolition waste recovery activities at Gallstown Quarry, County Louth (COR-LH-13-0004-02).

PERSONNEL

The Facility Manager at the existing waste recovery facility at Halverstown is WESLEY HENDY who is also the Kilsaran site manager for the adjoining concrete production plant and the nearby sand and gravel pit at Ballysaxhills. Wesley previously managed one of Kilsaran's readymix concrete plants in Dublin and, prior to that, had been site Foreman at Hanlon Concrete, Robertstown for over 10 years.

The deputy site manager at Halverstown is STEPHEN KENNEDY. Stephen holds an Advanced Certificate in Supply Chain and Logistics Management, a Diploma in Logistics and Supply Chain Management. He has also studied Business and Supply Chain Management in Carlow IT. Stephen has been employed by Kilsaran Concrete since January 2016 holding a number of roles such as Shipper, Transport Planner, Location Manager and Logistics Compliance and Process Lead for Dublin RMC. He previously spent 20 years working as a Logistics / Warehouse Operator for MSD (Schering Plough).

Wesley and Stephen have the following roles and responsibilities in respect of day-to-day management and operation of the existing permitted waste recovery facility at the application site:

- Liaison with Regulatory Authorities;
- Ensuring Compliance with Waste Licence Conditions;
- Management of Staff (including consultants), Contractors, Plant and Human Resources
- Waste classification and testing;
- Establishment and monitoring of waste handling and acceptance procedures;
- Environmental monitoring

In the event that the Agency approves this Waste Licence application, it is envisaged that Wesley and Stephen Kennedy will assume initial responsibility as Facility Manager and Deputy Facility Manager (respectively) for the proposed waste management facility at Ballinclare Quarry and that in time they will be supported by recruitment of additional, appropriately qualified technical and administration support staff. A copy of the existing / future site management structure at the recovery facility is attached.

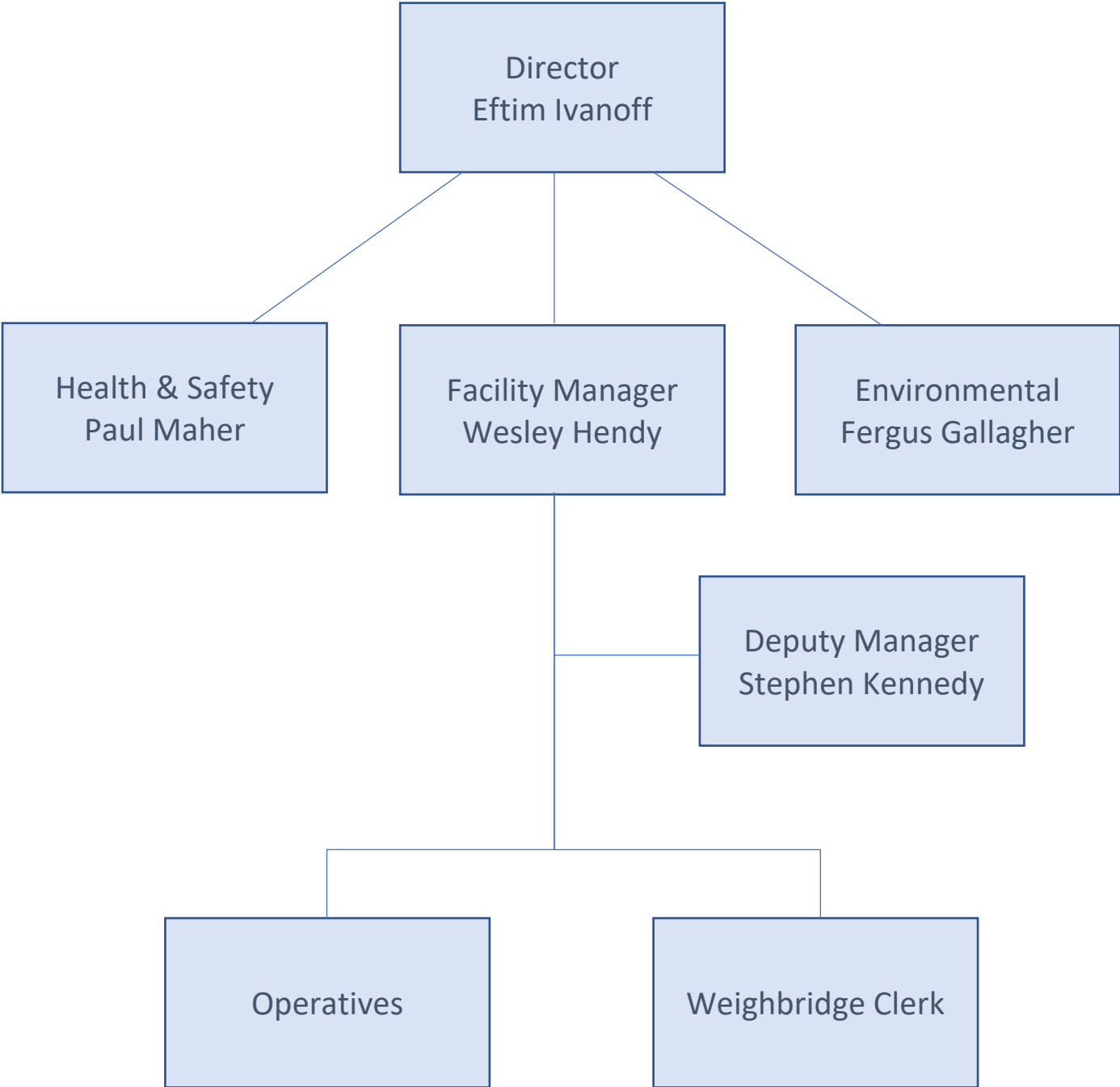
It is envisaged that additional technical / compliance support will be provided to the site-based team by FERGUS GALLAGHER. Fergus is a Chartered Minerals Surveyor and has been the Kilsaran Group Planning and Environmental Manager for over 27 years. If required, additional technical support can also be provided by independent external environmental consultants.

Within Kilsaran, the Director responsible for the Ballinclare Waste Recovery Facility will be EFTIM IVANOFF. Eftim is a Chartered Mechanical Engineer with 28 years' experience in the waste and quarrying industries.

**BALLINCLARE INERT WASTE MANAGEMENT FACILITY
PROPOSED MANAGEMENT STRUCTURE**

February 2023

KILSARAN CONCRETE Unlimited Company
Ballinclare Quarry
Kilbride
County Wicklow



WASTE FACILITY

License Number _____

MANAGEMENT QUALIFICATIONS February 2023

KILSARAN CONCRETE UNLIMITED COMPANY
Ballinclare
Kilbride
County Wicklow

Facility Manager

WESLEY HENDY

Kilsaran Halverstown and Ballysaxhills Manager for past 4 years, with prior experience managing one of Kilsaran's Dublin readymix concrete plants.

Previously Site Foreman at Hanlon Concrete, Robertstown for 10 years responsible for the day to day operations of a busy gravel pit and concrete works.

After leaving school held a position as storeman for 6 years at a large builders providers in Naas.

Deputy Manager

STEPHEN KENNEDY

Employed by Kilsaran Concrete since January 2016 holding a number of roles such as Shipper, Transport Planner, Location Manager and Logistics Compliance and Process Lead for Dublin RMC. Previously he spent 20 years working as a Logistics/Warehouse Operator for MSD previously (Schering Plough).

Holds an Advanced Certificate in Supply Chain and Logistics Management, a Diploma in Logistics and Supply Chain Management. He has also studied Business and Supply Chain Management in Carlow IT.

Environmental Compliance

FERGUS GALLAGHER

Kilsaran Group Planning & Environmental Manager for past 27 years and a Chartered Minerals Surveyor. Previously worked in quarrying and opencast mining in the UK.

Health & Safety

PAUL MAHER

Group Health & Safety Manager for all Kilsaran: locations, personnel and equipment. Responsibilities extend to dealing with all incidents involving insurance claims (Employer & Public Liability + Fleet Insurable(s)).

Has over 20 years' experience in Environmental, Health, Safety and Business Risk Management, across multiple industries.