



**Figure 1:** Regional Subsoil Distribution

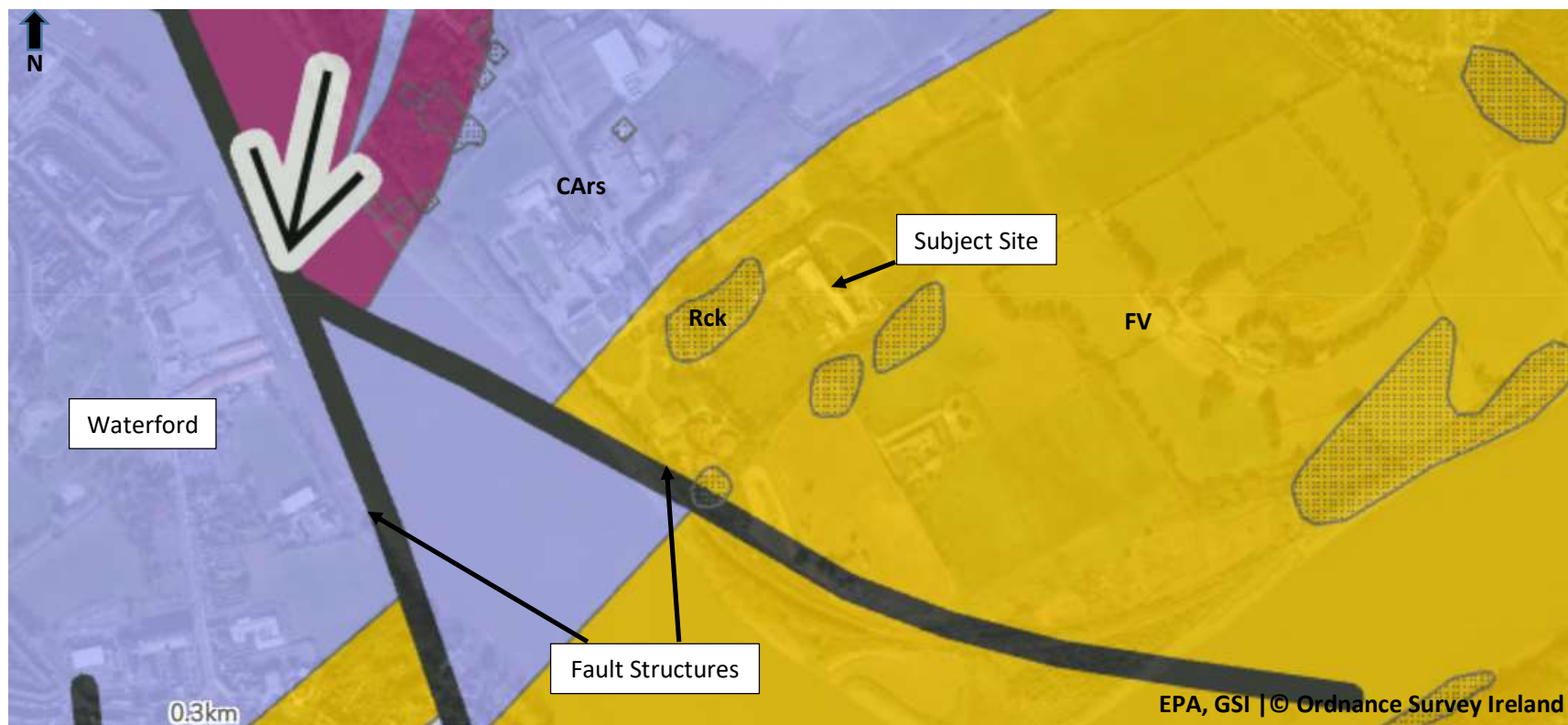
**Legend**

TDSs – Till Derived Chiefly from Devonian Sandstones

Urban – Made Ground

A - Alluvium

Rck – Bedrock Outcrop and Subcrop



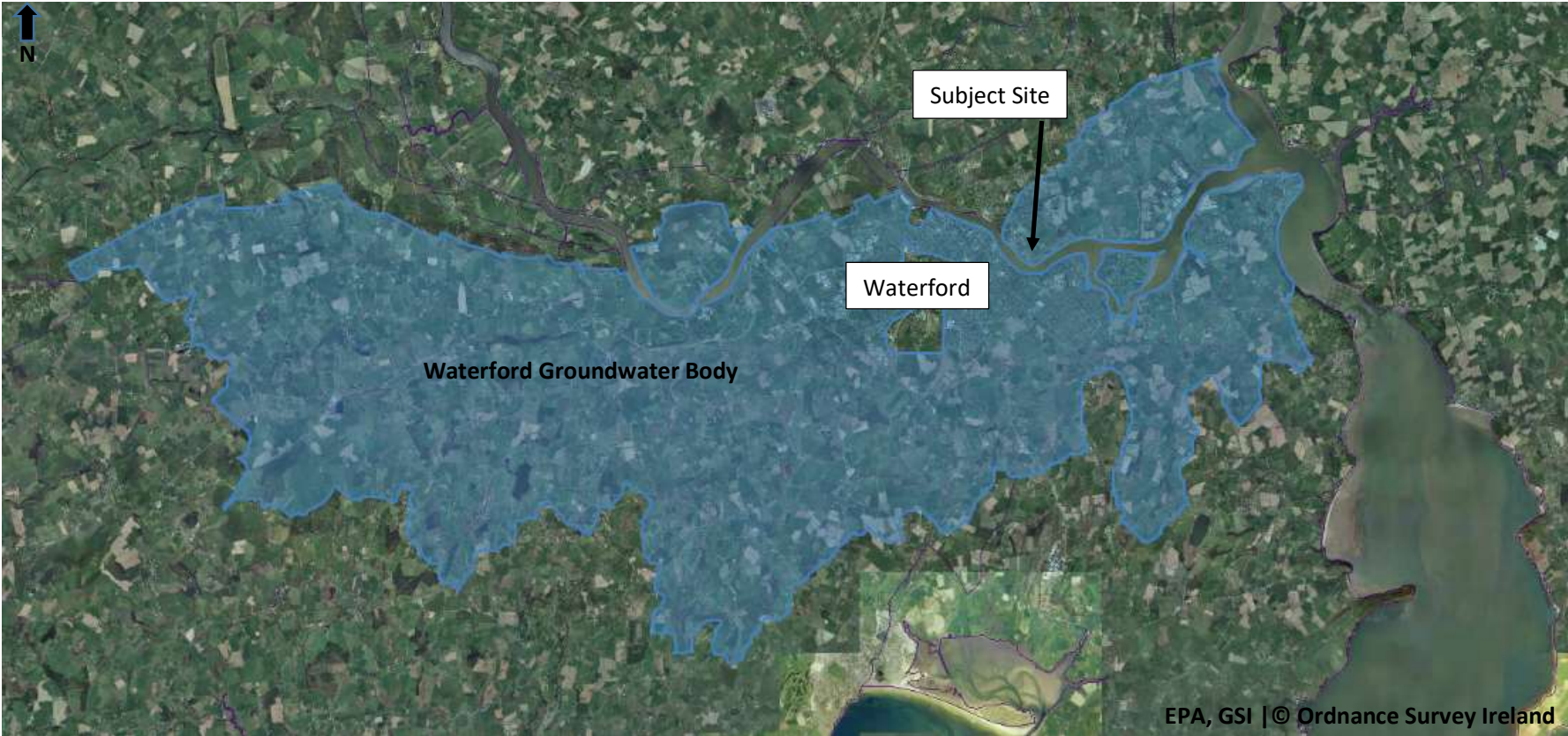
**Figure 2:** Regional Bedrock Geology

Legend

FV – Felsic Volcanics

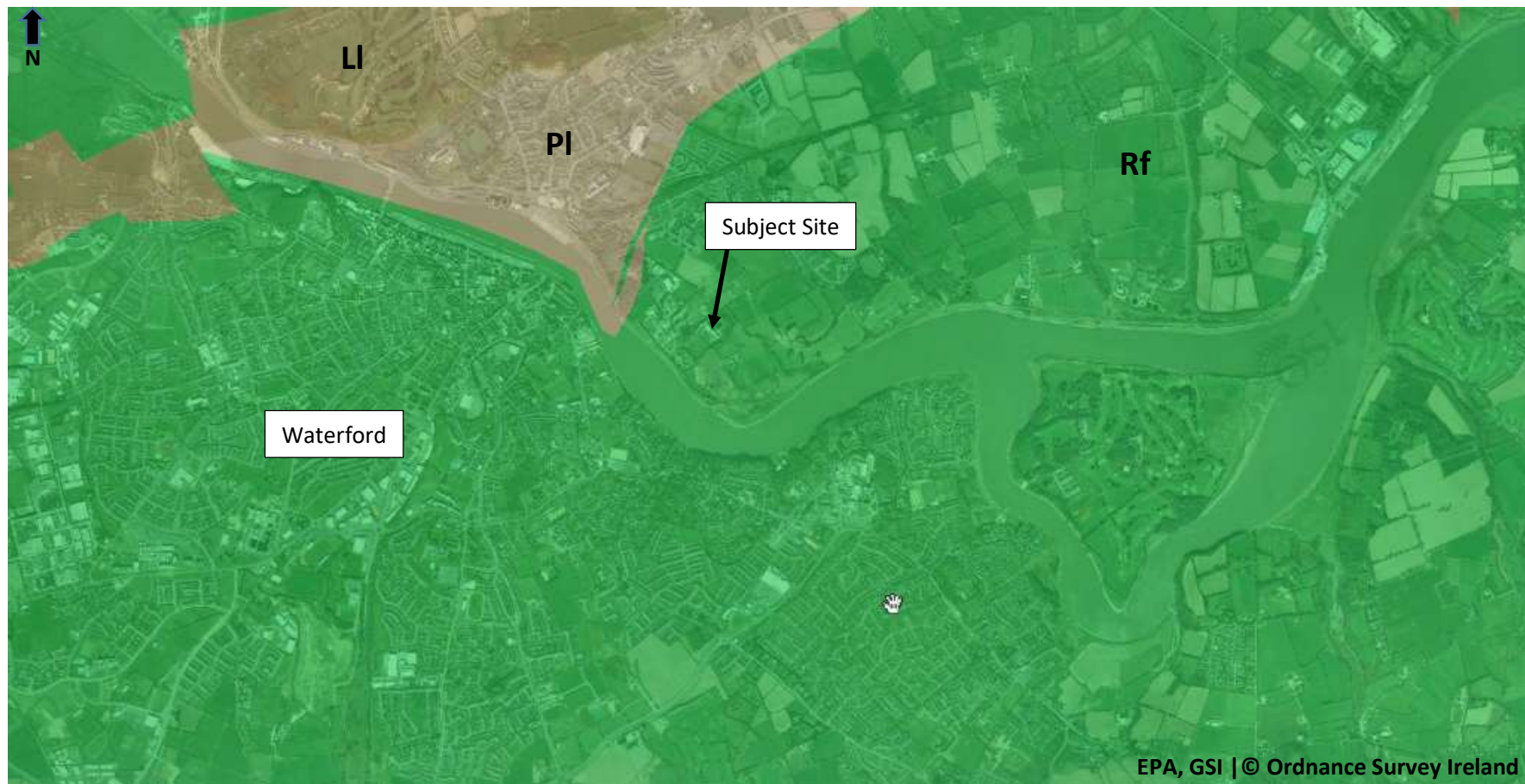
CARs – Ross Member of Campile Formation

Rck – Bedrock Outcrop and Subcrop



**Figure 3:** Extent of Groundwater Body





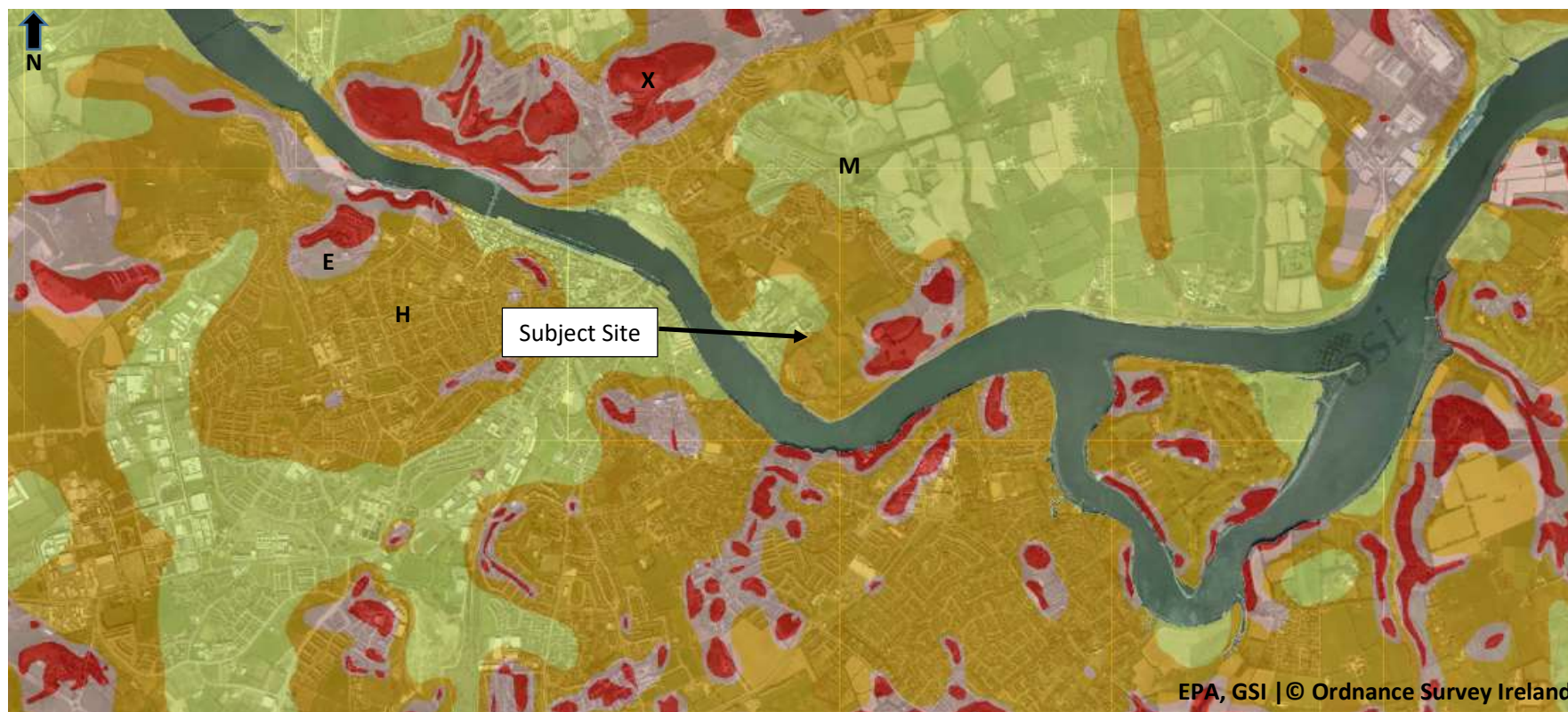
**Figure 4:** Aquifer Classification

Legend

Rf - Regionally Important Aquifer – Fissured Bedrock

LI – Locally Important Aquifer – Bedrock which is Moderately Productive only in Local Zones

PI – Poor Aquifer – Bedrock which is generally unproductive except for local zones



**Figure 5:** Regional Groundwater Vulnerability

Legend

X – Rock at or near surface or Karst

E – Extreme

H – High

M – Moderate