

Id	Eastings	Northings
DUST		
D1	297278	267774
D2	297744	267560
D3	297831	267285
D4	297648	266862
D5	297030	267194
D6	296964	267575
D7	297578	266678
D8	298081	267565
GROUNDWATER		
MW1D	296706	267640
MW2D	297176	267992
MW3D	297558	267761
MW5D	297701	267094
MW6D	297382	266722
MW7D	297064	266890
MW16D	297679	267145
MW17D	297679	267145
MW18D	297679	267145
MW19D	297679	267145
NOISE		
N1	297290	267999
N2	297901	267565
N3	297858	267207
N4	296921	267882
SURFACE WATER		
SW1	296706	267600
SW2	297464	267862
SW3	298087	267634
SW5	297764	267116
SW6	297663	266562
SW7	297510	266525
SW8	297916	266029
SW9	297587	266621
PSW10	297415	267843
PM10		
PM1	297030	267909
PM2	297833	267591
PM3	297656	266894
PM4	297656	266630
PM5	297035	267170
PM6	298454	267576
LEACHATE		
LP-1	297217	266895
LP-2	297523	266943
LP-3	297216	266904
LP-4	297520	266962
LP-5	297200	267006
LP-6	297505	267051
LP-7	297197	267107
LP-8	297501	267072
LP-9	297196	267106
LP-10	297194	267112
LP-11	297180	267137
LP-12	297182	267183
LP-13		
LP-14	297463	267304
LP-15		
LP-16		
LP-17		
LP-18		
LP-19		
LP-20		
LP-21		
LP-22		
LP-23		
LP-24		
LP-S	297612	267263

Id	Eastings	Northings
BIOLOGICAL		
Site 1	297751	266193
Site 2	296164	267498
Site 3	300118	264757
Site 4	297817	265030
LANDFILL GAS		
LG01	297555	267031
LG02	297554	267018
LG03	297559	266975
LG04	297563	266928
LG05	297572	266874
LG06	297581	266831
LG07	297513	266815
LG08	297472	266806
LG09	297418	266799
LG010	297376	266789
LG011	297319	266781
LG012	297271	266777
LG013	297220	266772
LG014	297190	266793
LG015	297181	266843
LG016	297170	266895
LG017	297095	266894
LG018	297088	266942
LG019	297084	266991
LG020	297140	267041
LG021	297134	267090
LG022	297126	267140
LG023	297120	267188
LG024	297114	267238
LG025	297107	267289
LG026	297105	267341
LG027	297099	267400
LG028	297092	267453
LG050	297570	267107
LG051	297564	267158
LG052	297556	267205
LG053	297541	267253
LG054	297532	267302
LG055	297527	267427
LG056	297512	267427
LG057	297499	267461
AIR LFG PLANT		
KH01	297589	266889
KH02	297595	266890
KH03	297602	266891
KH04	297608	266892
F1	297571	266916
F2	297572	266908
F3	297577	266895

LEGEND

- PLANNING BOUNDARY
- OWNERSHIP BOUNDARY
- AREA WITHIN PLANNING BOUNDARY, NOT WITHIN SITE
- OVERHEAD POWER LINES
- 20 KV OVERHEAD POWER LINES TO BE REMOVED
- GAS MAIN
- KNOCKHARLEY STREAM

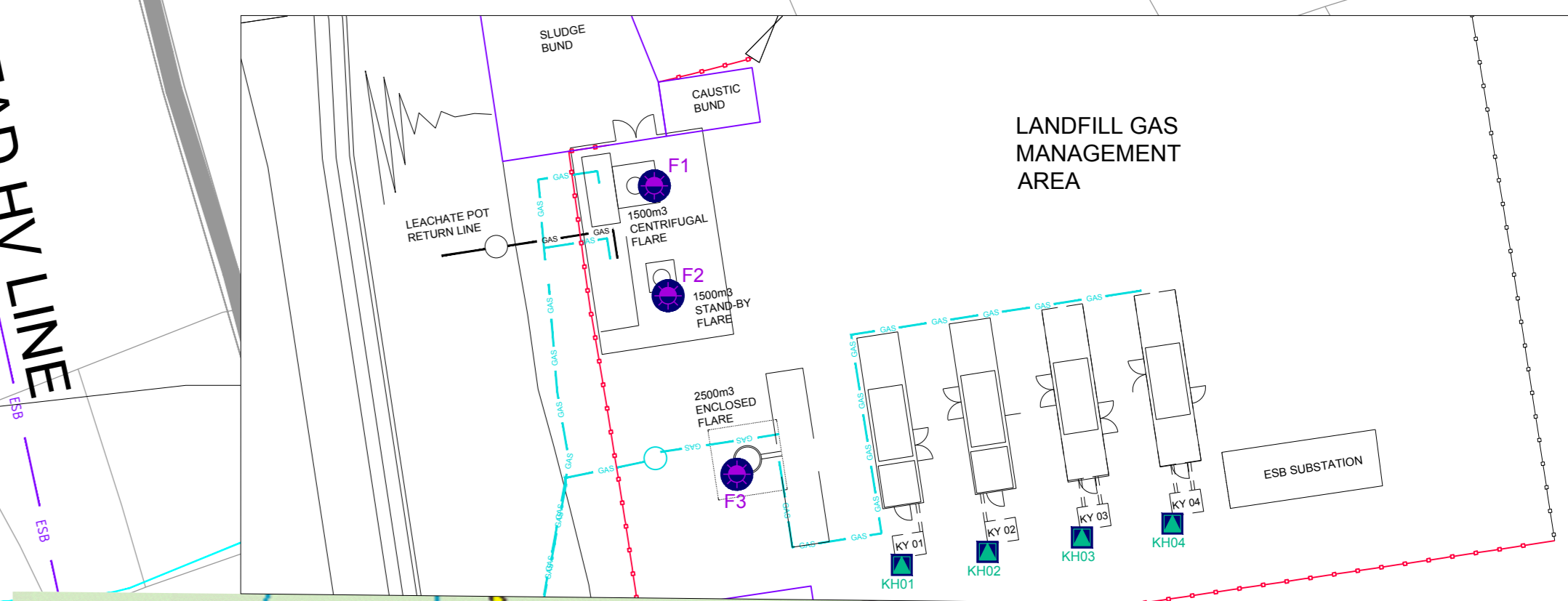
NOTES:

GRID REFERENCES ARE IN METRES & TO IRISH NATIONAL GRID.

LEVELS ARE IN METRES & TO O.S. DATUM AND CORRESPOND TO APRIL 2022 AERIAL SURVEY.

DIMENSIONS ARE IN METRES.

OSI Licence No.:
CYAL50192220



CLIENT	KNOCKHARLEY LANDFILL		
CONSULTANT	wsp GOLDER		
PROJECT	KNOCKHARLEY LANDFILL DEVELOPMENT		
TITLE	MONITORING POINTS		
PROJECT NO.	41000159	DRAWING NO.	01
REV.	A	SCALE	1:2,500 AO
DESIGNED	DC	DATE	2022-August-18
PREPARED	DC		
REVIEWED	BK		
APPROVED	BK		