

Figure 1: Site Layout Plan (Google Maps Background)

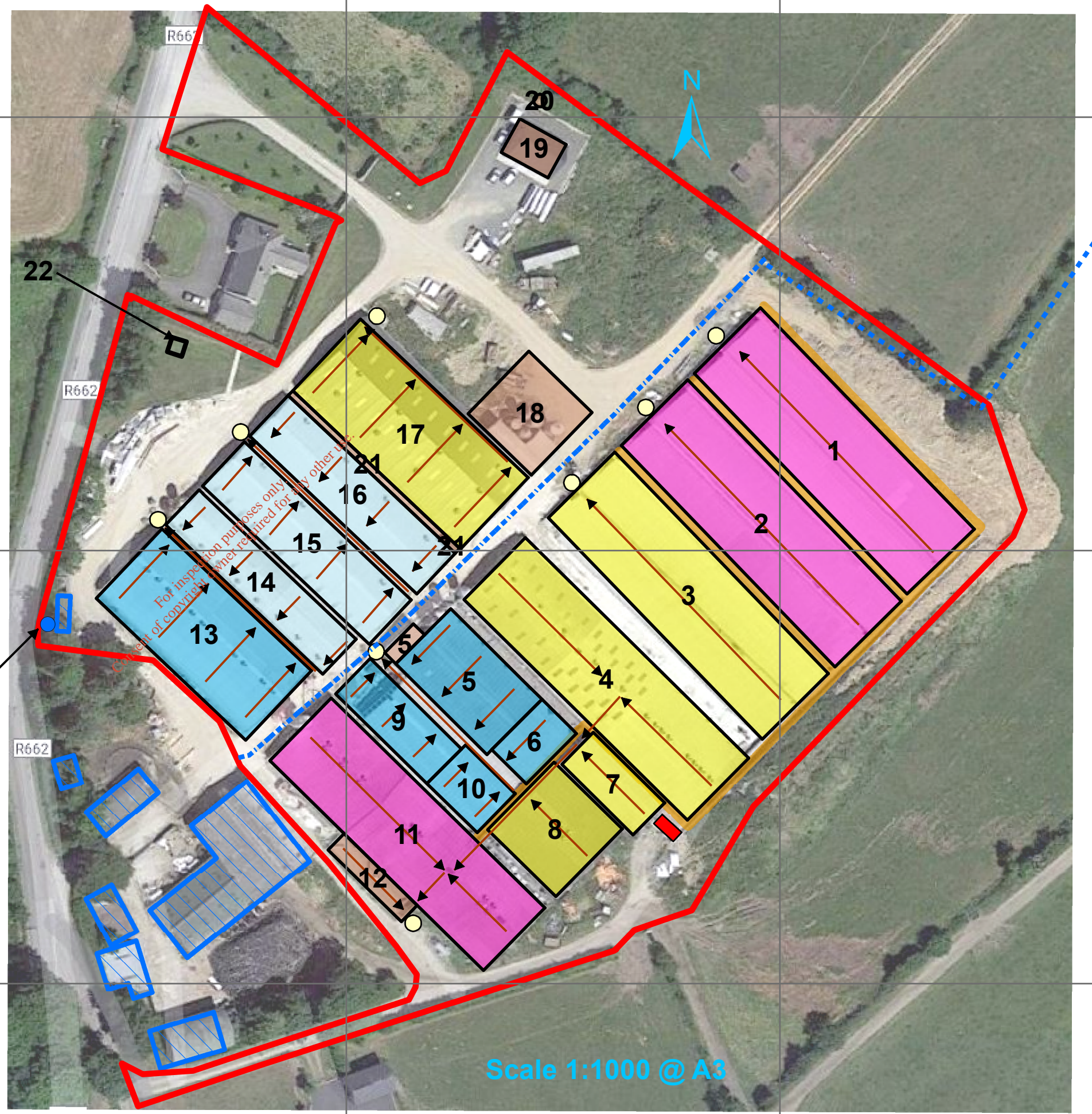
Ref No	Description	Length (m)	Width (m)	Height (m)	Area (m ²)	Depth of tank (m)	Slurry storage (m ³)
1	Finisher house	71.7	21.3	5.1	1527	1.8	2077
2	Finisher house	71.7	21.3	5.1	1527	1.8	2077
3	Dry sow house	71.7	21.3	5.1	1527	1.8	2077
4	Dry sow house	71.7	21.3	5.2	1527	1.8	2077
5	Weaner house	29.3	17.8	4.3	522	1.2	443
6	Weaner house	11.4	16.4	4.3	187	1.2	159
7	Dry sow house	23.6	10.4	4.3	245	1.8	334
8	Dry sow house	21.7	21.5	4.3	467	1.8	635
9	Weaner house	30.2	11.1	4	335	-	285
10	Weaner house	15.5	12.6	4	195	1.2	166
11	Finisher House	69.5	20	5	1390	1.8	1890
12	Loading bay	23	4.6	-	106	-	-
13	Weaner house	48.8	21.9	4	1069	1.2	908
14	Farrowing house	51.3	11	3.5	564	1.2	480
15	Farrowing house	52.8	12.8	3.5	676	1.2	575
16	Farrowing house	52.8	12.8	4	676	1.2	575
17	Dry sow house	52.8	22.5	5	1188	1.8	1616
18	Mill Building	20	20	18.3	400	-	-
19	Office and staff facilities	11	10	5	110	-	-
20	Septic tank	-	-	-	73m ³	-	-
21	Water Harvesting tank and pump house	1.8	52.8	95	110	1.8	-
22	Electrical substation*	4.9	4.4	3	21.7	-	-
Totals =>					14,260		17,336

Legend

Building type

- Farrowing
- Finisher
- Dry Sow
- Weaner
- Ancillary building
- Cattle buildings
- Slurry off-take points
- Carcass skip
- Slatted soiled water passage
- Slurry flow
- Storm water pipe
- Open drain
- Site outline

Domestic well
(Site well located 0.7km NW of site)



Scale 1:1000 @ A3

