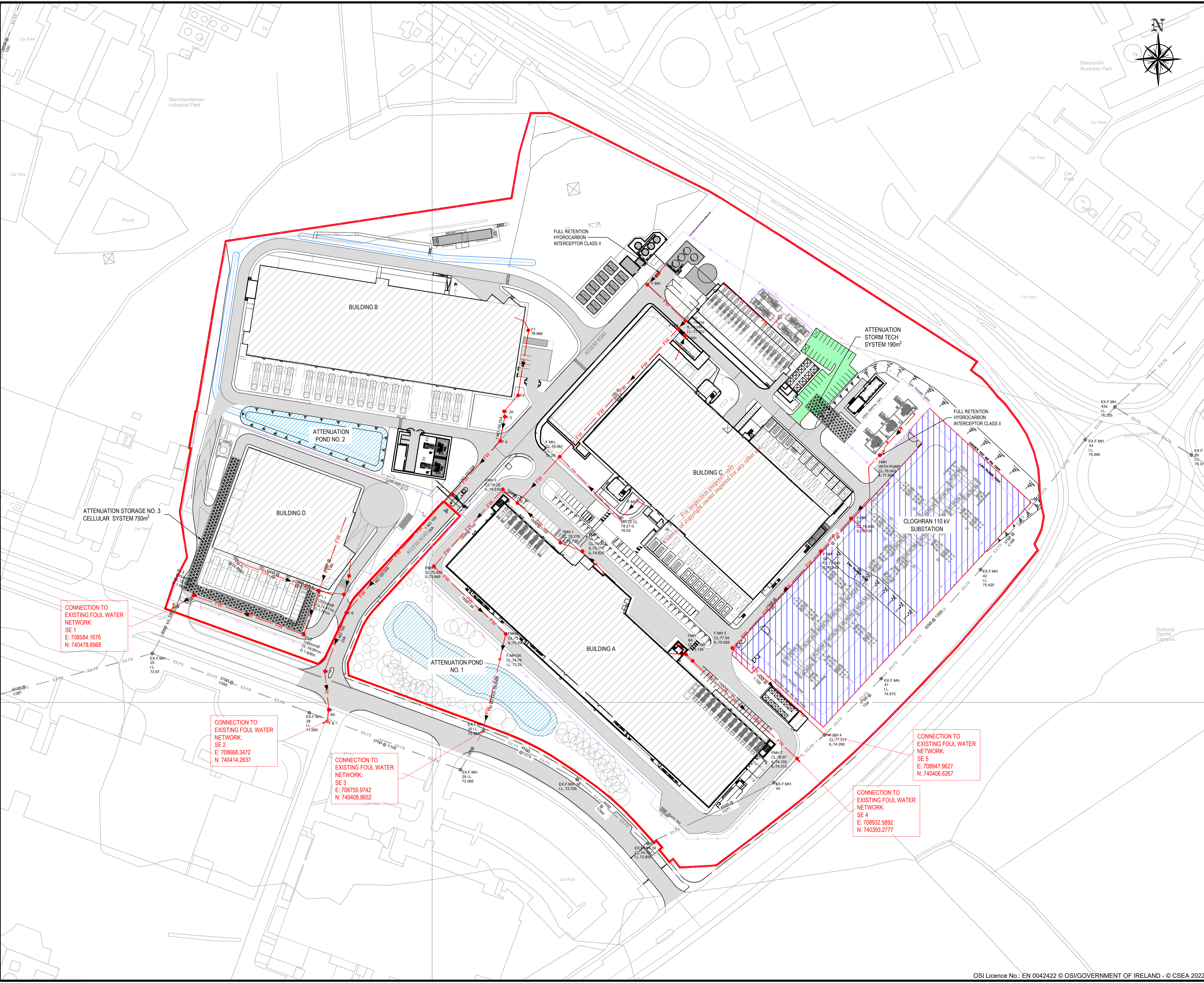


LEGEND:

- SITE BOUNDARY LINE
- CAMPUS BUILDING
- CAMPUS ROAD
- CLOHRAN 110 kV SUBSTATION
- PERMEABLE PAVING
- EXISTING PERIMETER WALL
- CAMPUS SECURITY FENCE
- CAMPUS CONCRETE POST & RAIL FENCE
- FW FW
- EXFS EXFS
- CAMPUS FOUL WATER NETWORK
- EXISTING FOUL WATER NETWORK



NOTE :
DRAWINGS ARE NOT TO BE SCALE
DRAWINGS ARE FOR THE PROPOSED EPA LICENCE
NOT FOR CONSTRUCTION

C01	EPA-ISSUE	DM	PM	11.02.2022
P01	FOR COMMENT	DM	PM	31.01.2022
Rev	Description	Drawn	Checked	Date

Clifton Scannell Emerson Associates Limited

Consulting Engineers,
3rd Floor The Highline,
Bakers Point, Pottery Road,
Dun Laoghaire, Co. Dublin,
Ireland, A96 KW29

T: +353 1 288 5006
F: +353 1 283 3466
E: info@csea.ie
W: www.csea.ie

Client **ADSIL**
BLANCHARDSTOWN INDUSTRIAL PARK

Project **FOUL WATER LAYOUT PLAN**

Dwg. Title **21_123**

Drawn By **DM** Date **JAN 2022**
Checked By **PM** Scale **1:1000 @ A1**

Project Code Originator Zone/Phase Level Type Role Dwg. No.
21_123D - CSE - 00 - XX - DR - C - 1200

S2 FOR INFORMATION
Status Code Suitability Description

C01 EPA-LICENCE
Revision Project Status

CONNECTION TO EXISTING FOUL WATER NETWORK:
SE 1
E: 708584.1676
N: 740478.8968

CONNECTION TO EXISTING FOUL WATER NETWORK:
SE 2
E: 708668.3472
N: 740414.2637

CONNECTION TO EXISTING FOUL WATER NETWORK:
SE 3
E: 708755.9742
N: 740408.8652

CONNECTION TO EXISTING FOUL WATER NETWORK:
SE 5
E: 708947.9627
N: 740406.6267

CONNECTION TO EXISTING FOUL WATER NETWORK:
SE 4
E: 708932.5892
N: 740393.2777