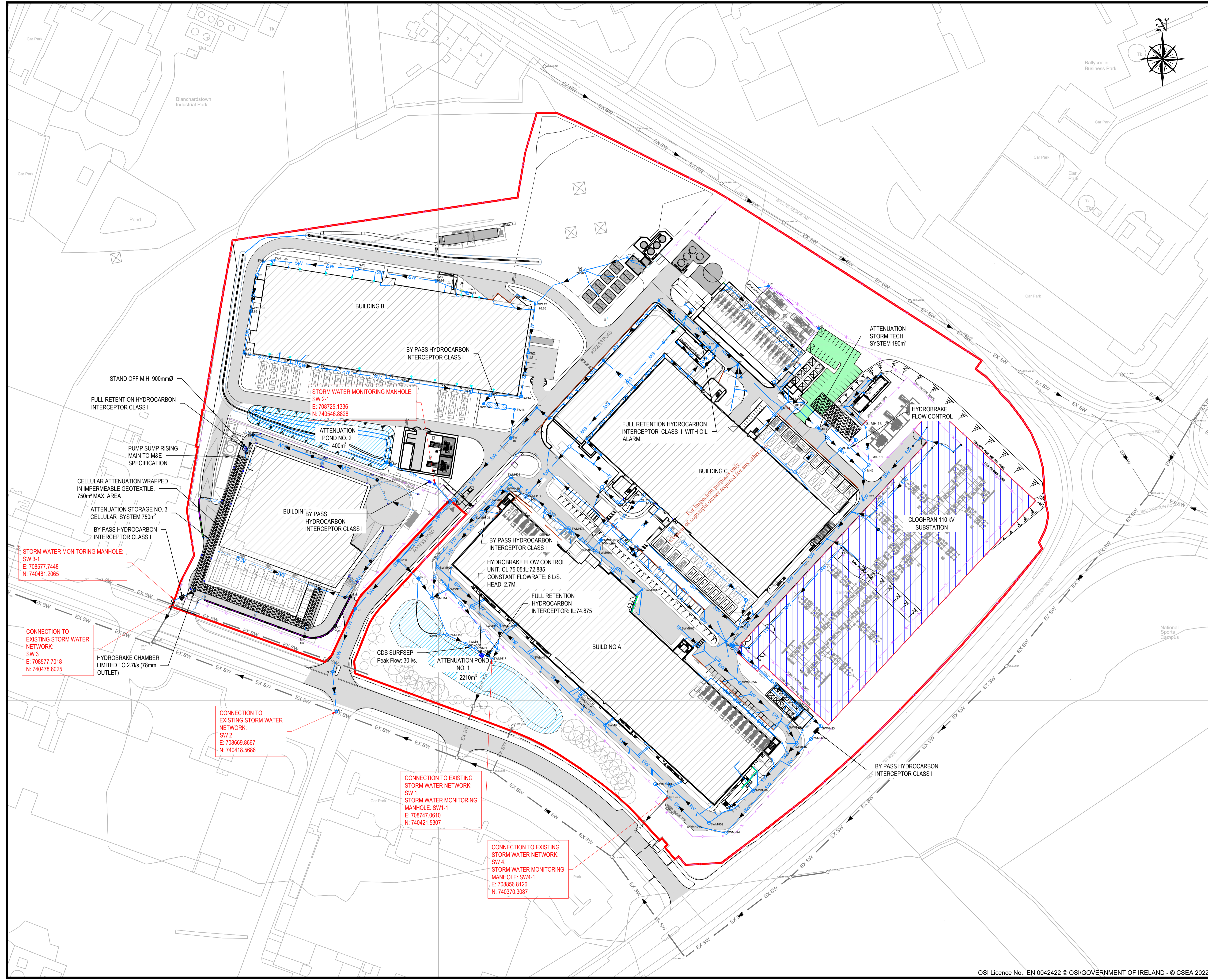




- LEGEND:**
- SITE BOUNDARY LINE
 - CAMPUS BUILDING
 - CAMPUS ROAD
 - CLOHRAN 110 kV SUBSTATION
 - PERMEABLE PAVING
 - EXISTING PERIMETER WALL
 - CAMPUS SECURITY FENCE
 - CAMPUS CONCRETE POST & RAIL FENCE
 - SW ——— CAMPUS SURFACE WATER NETWORK
 - EX SW ——— EXISTING SURFACE WATER NETWORK



NOTE:
DRAWINGS ARE NOT TO BE SCALE
DRAWINGS ARE FOR THE PROPOSED EPA LICENCE
NOT FOR CONSTRUCTION

Rev	Description	Drawn	Checked	Date
C01	EPA-ISSUE	DM	PM	11.02.2022
P01	FOR COMMENT	DM	PM	31.01.2022

Clifton Scannell Emerson Associates

Clifton Scannell Emerson Associates Limited
Consulting Engineers,
3rd Floor The Highline,
Bakers Point, Pottery Road,
Dun Laoghaire, Co. Dublin,
Ireland, A96 KW29

T: +353 1 288 5006
F: +353 1 283 3466
E: info@csea.ie
W: www.csea.ie

Client		ADSIL	
Project		BLANCHARDSTOWN INDUSTRIAL PARK	
Dwg. Title		SURFACE WATER LAYOUT PLAN	
Drawn By	DM	Date	JAN 2022
Checked By	PM	Scale	1:1000 @ A1
Project Code	Originator	Zone/Phase	Level Type Role
21_123D - CSE - 00 - XX - DR - C - 1100			
Status Code	S2 FOR INFORMATION		
Revision	C01 EPA-LICENCE		