

Knockharley Landfill

Photomontages

This book contains imagery for the viewpoints chosen for the LVIA study

August 2019

INDEX

Viewpoint 1 - Existing View + Outline View
Viewpoint 1 - Montage View + Mitigated View

Viewpoint 2 - Existing View + Outline View
Viewpoint 2 - Montage View + Mitigated View

Viewpoint 3 - Existing View + Outline View
Viewpoint 3 - Montage View + Mitigated View

Viewpoint 4 - Existing View + Outline View
Viewpoint 4 - Montage View + Mitigated View

Viewpoint 5 - Existing View + Outline View
Viewpoint 4 - Montage View + Mitigated View

Viewpoint 6 - Existing View + Outline View
Viewpoint 6 - Montage View + Mitigated View

Viewpoint 7 - Existing View + Outline View
Viewpoint 7 - Montage View + Mitigated View

Viewpoint 8 - Existing View + Outline View
NB - There is no Montage or Mitigated Montage View for this viewpoint

Viewpoint 9 - Existing View + Outline View
Viewpoint 9 - Montage View

Viewpoint 10 - Existing View + Outline View
Viewpoint 10 - Montage View + Mitigated View

LVIA viewpoint locations selected for the Knockharley Landfill project

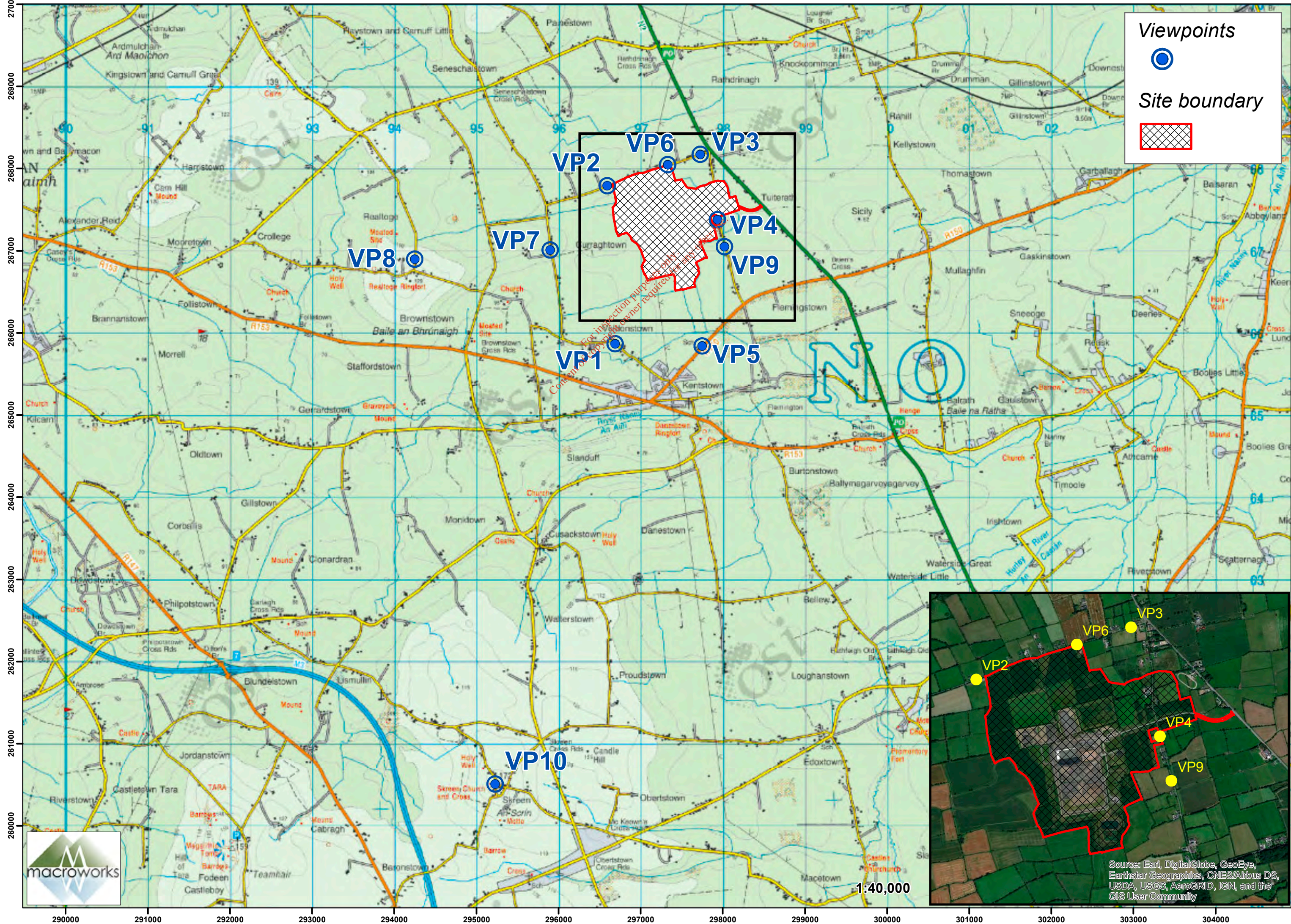


Table 1.1: Viewpoint Locations

Viewpoint No.	Location	Viewpoint Type	Grid Reference	Grid Reference	Approximate Distance from Site Boundary	Approximate Distance from Existing Development	Approximate distance from Proposed Development
1	Local Road to the South	Roadside	696616, 765891	696618, 765888	870 m	1 km	900 m
2	CR384 Roadside North West of Site	Roadside/Amenity	696520, 767809	696523, 767810	70 m/Adjacent	465 m	75 m
3	CR384 Roadside North East of Site	Roadside	697653, 768191	697653, 768190	387 m	500 m	395 m
4	CR384 Roadside East of Site	Roadside/Residential	697856, 767398	697856, 767396	26 m/Adjacent	300m	160 m
5	Kentstown Primary School	School	697675, 765856	697678, 765860	134 m [725 m]	780 m	1 km
6	CR384 Roadside North of Site	Roadside	697252, 768063	697257, 768064	Adjacent	424 m (280 m to permitted not yet constructed)	130 m
7	Local County Road Network West of Site	Roadside/Residential	695828, 767037	695828, 767029	845 m	1 km	870 m
8	Country Road Network West of the Site	Roadside	694186, 766913	694180, 766915	2.4 km	2.7 km	2.47 km
9	Country Road Immediately East of the Site	Roadside	697947, 767068	697949, 767069	130 m	425 m	400 m
10	Hill Skreen of	Skreen Tower/CDP Protected View and Prospect		695158, 760529	6.5 km	6.4 km	6.4 km

Existing View



Outline View

indicating physical position and scale of development irrespective of screening



These are 80° panoramic montages captured and presented in accordance with the guidance set by the British Landscape Institute 2011 - Advice Note 01/11.

To view these panoramas on a flat surface one must move from left to right along their length whilst maintaining a perpendicular viewing direction and the specified correct viewing distance of 30cm. To see this entire panoramic scene in reality would necessitate turning one's head through approx 40°.

Easting (ITM):	696618	Lens:	50mm / Full Frame Sensor	Date:	27-Jun-19
Northing (ITM):	765888	Camera:	Canon 1-D Mark II digital SLR	Time:	12:29
Direction of View	24° E of Grid North	Camera Height:	1.7m Above Ground Level		
Angle of View:	80°				



Montage View
Pre-Mitigation



Montage View
With Mitigation Established



These are 80° panoramic montages captured and presented in accordance with the guidance set by the British Landscape Institute 2011 - Advice Note 01/11.

To view these panoramas on a flat surface one must move from left to right along its length whilst maintaining a perpendicular viewing direction and the specified **correct viewing distance of 30cm**. To see this entire panoramic scene in reality would necessitate turning one's head through 40°.

Easting (ITM):	696618	Lens:	50mm / Full Frame Sensor	Date:	27-Jun-19
Northing (ITM):	765888	Camera:	Canon 1-D Mark II digital SLR	Time:	12:29
Direction of View:	24° E of Grid North	Camera Height:	1.7m Above Ground Level		
Angle of View:	80°				



Existing View



Outline View
indicating physical position and scale of development irrespective of screening



- Knockharley Landfill (Existing and Proposed)
- Structures (Proposed)

These are 80° panoramic montages captured and presented in accordance with the guidance set by the British Landscape Institute 2011 - Advice Note 01/11.

To view these panoramas on a flat surface one must move from left to right along their length whilst maintaining a perpendicular viewing direction and the specified **correct viewing distance of 30cm**. To see this entire panoramic scene in reality would necessitate turning one's head through approx 40°.

Easting (ITM):	696523	Lens:	50mm / Full Frame Sensor	Date:	27-Jun-19
Northing (ITM):	767810	Camera:	Canon 1-D Mark II digital SLR	Time:	12:00
Direction of View	128° E of Grid North	Camera Height:	1.7m Above Ground Level		
Angle of View:	80°				



Montage View
Pre-Mitigation

Please Note: The proposed development is not visible as it screened by existing mitigation.



Montage View
With Mitigation Established

For inspection purposes only.
Consent of copyright owner required for any other use.



These are 80° panoramic montages captured and presented in accordance with the guidance set by the British Landscape Institute 2011 - Advice Note 01/11.

To view these panoramas on a flat surface one must move from left to right along its length whilst maintaining a perpendicular viewing direction and the specified **correct viewing distance of 30cm**. To see this entire panoramic scene in reality would necessitate turning one's head through 40°.

Easting (ITM):	696523	Lens:	50mm / Full Frame Sensor	Date:	27-Jun-19
Northing (ITM):	767810	Camera:	Canon 1-D Mark II digital SLR	Time:	12:00
Direction of View	128° E of Grid North	Camera Height:	1.7m Above Ground Level		
Angle of View:	80°				





Outline View
indicating physical position and scale of development irrespective of screening

Knockharley Landfill (Existing and Proposed)
Structures (Proposed)

These are 80° panoramic montages captured and presented in accordance with the guidance set by the British Landscape Institute 2011 - Advice Note 01/11.

To view these panoramas on a flat surface one must move from left to right along their length whilst maintaining a perpendicular viewing direction and the specified correct viewing distance of 30cm. To see this entire panoramic scene in reality would necessitate turning one's head through approx 40°.

Easting (ITM):	697653	Lens:	50mm / Full Frame Sensor	Date:	27-Jun-19
Northing (ITM):	768190	Camera:	Canon 1-D Mark II digital SLR	Time:	11:50
Direction of View	162° W of Grid North	Camera Height:	1.7m Above Ground Level		
Angle of View:	80°				





These are 80° panoramic montages captured and presented in accordance with the guidance set by the British Landscape Institute 2011 - Advice Note 01/11.

To view these panoramas on a flat surface one must move from left to right along its length whilst maintaining a perpendicular viewing direction and the specified **correct viewing distance of 30cm**. To see this entire panoramic scene in reality would necessitate turning one's head through 40°.

Easting (ITM):	697653	Lens:	50mm / Full Frame Sensor	Date:	27-Jun-19
Northing (ITM):	768190	Camera:	Canon 1-D Mark II digital SLR	Time:	11:50
Direction of View	162° W of Grid North	Camera Height:	1.7m Above Ground Level		
Angle of View:	80°				



Existing View



Outline View
indicating physical position and scale of development irrespective of screening



- Knockharley Landfill (Existing and Proposed)
- Structures (Proposed)

These are 80° panoramic montages captured and presented in accordance with the guidance set by the British Landscape Institute 2011 - Advice Note 01/11.

To view these panoramas on a flat surface one must move from left to right along their length whilst maintaining a perpendicular viewing direction and the specified correct viewing distance of 30cm. To see this entire panoramic scene in reality would necessitate turning one's head through approx 80°.

Easting (ITM):	697865	Lens:	50mm / Full Frame Sensor	Date:	27-Jun-19
Northing (ITM):	767396	Camera:	Canon 1-D Mark II digital SLR	Time:	12:49
Direction of View:	96° W of Grid North	Camera Height:	1.7m Above Ground Level		
Angle of View:	120°				



Montage View
Pre-Mitigation



Montage View
With Mitigation Established



These are 80° panoramic montages captured and presented in accordance with the guidance set by the British Landscape Institute 2011 - Advice Note 01/11.

To view these panoramas on a flat surface one must move from left to right along its length whilst maintaining a perpendicular viewing direction and the specified correct viewing distance of 30cm. To see this entire panoramic scene in reality would necessitate turning one's head through 40°.

Easting (ITM):	697865	Lens:	50mm / Full Frame Sensor	Date:	27-Jun-19
Northing (ITM):	767396	Camera:	Canon 1-D Mark II digital SLR	Time:	12:49
Direction of View:	96° W of Grid North	Camera Height:	1.7m Above Ground Level		
Angle of View:	120°				





These are 80° panoramic montages captured and presented in accordance with the guidance set by the British Landscape Institute 2011 - Advice Note 01/11.

To view these panoramas on a flat surface one must move from left to right along their length whilst maintaining a perpendicular viewing direction and the specified correct viewing distance of 30cm. To see this entire panoramic scene in reality would necessitate turning one's head through approx 40°.

Easting (ITM):	697678	Lens:	50mm / Full Frame Sensor	Date:	27-Jun-19
Northing (ITM):	765860	Camera:	Canon 1-D Mark II digital SLR	Time:	12:36
Direction of View:	21° W of Grid North	Camera Height:	1.7m Above Ground Level		
Angle of View:	80°				





These are 80° panoramic montages captured and presented in accordance with the guidance set by the British Landscape Institute 2011 - Advice Note 01/11.

To view these panoramas on a flat surface one must move from left to right along its length whilst maintaining a perpendicular viewing direction and the specified correct viewing distance of 30cm. To see this entire panoramic scene in reality would necessitate turning one's head through 40°.

Easting (ITM):	697678	Lens:	50mm / Full Frame Sensor	Date:	27-Jun-19
Northing (ITM):	765860	Camera:	Canon 1-D Mark II digital SLR	Time:	12:36
Direction of View	21° W of Grid North	Camera Height:	1.7m Above Ground Level		
Angle of View:	80°				



Existing View



Outline View

indicating physical position and scale of development irrespective of screening



- Knockharley Landfill (Existing and Proposed)
- Structures (Proposed)

These are 80° panoramic montages captured and presented in accordance with the guidance set by the British Landscape Institute 2011 - Advice Note 01/11.

To view these panoramas on a flat surface one must move from left to right along their length whilst maintaining a perpendicular viewing direction and the specified **correct viewing distance of 30cm**. To see this entire panoramic scene in reality would necessitate turning one's head through approx 40°.

Easting (ITM):	697257	Lens:	50mm / Full Frame Sensor	Date:	27-Jun-19
Northing (ITM):	768064	Camera:	Canon 1-D Mark II digital SLR	Time:	11:54
Direction of View	156° E of Grid North	Camera Height:	1.7m Above Ground Level		
Angle of View:	80°				



Montage View
Pre-Mitigation



Montage View
With Mitigation Established



These are 80° panoramic montages captured and presented in accordance with the guidance set by the British Landscape Institute 2011 - Advice Note 01/11.

To view these panoramas on a flat surface one must move from left to right along its length whilst maintaining a perpendicular viewing direction and the specified **correct viewing distance of 30cm**. To see this entire panoramic scene in reality would necessitate turning one's head through 40°.

Easting (ITM):	697257	Lens:	50mm / Full Frame Sensor	Date:	27-Jun-19
Northing (ITM):	768064	Camera:	Canon 1-D Mark II digital SLR	Time:	11:54
Direction of View	156° E of Grid North	Camera Height:	1.7m Above Ground Level		
Angle of View:	80°				





These are 80° panoramic montages captured and presented in accordance with the guidance set by the British Landscape Institute 2011 - Advice Note 01/11.

To view these panoramas on a flat surface one must move from left to right along their length whilst maintaining a perpendicular viewing direction and the specified **correct viewing distance of 30cm**. To see this entire panoramic scene in reality would necessitate turning one's head through approx 40°.

Easting (ITM):	695828	Lens:	50mm / Full Frame Sensor	Date:	27-Jun-19
Northing (ITM):	767029	Camera:	Canon 1-D Mark II digital SLR	Time:	12:09
Direction of View:	86° E of Grid North	Camera Height:	1.7m Above Ground Level		
Angle of View:	80°				





These are 80° panoramic montages captured and presented in accordance with the guidance set by the British Landscape Institute 2011 - Advice Note 01/11.

To view these panoramas on a flat surface one must move from left to right along its length whilst maintaining a perpendicular viewing direction and the specified **correct viewing distance of 30cm**. To see this entire panoramic scene in reality would necessitate turning one's head through 40°.

Easting (ITM):	695828	Lens:	50mm / Full Frame Sensor	Date:	27-Jun-19
Northing (ITM):	767029	Camera:	Canon 1-D Mark II digital SLR	Time:	12:09
Direction of View	86° E of Grid North	Camera Height:	1.7m Above Ground Level		
Angle of View:	80°				





These are 80° panoramic montages captured and presented in accordance with the guidance set by the British Landscape Institute 2011 - Advice Note 01/11.

To view these panoramas on a flat surface one must move from left to right along their length whilst maintaining a perpendicular viewing direction and the specified correct viewing distance of 30cm. To see this entire panoramic scene in reality would necessitate turning one's head through approx 40°.

Easting (ITM):	694180	Lens:	50mm / Full Frame Sensor	Date:	27-Jun-19
Northing (ITM):	766915	Camera:	Canon 1-D Mark II digital SLR	Time:	12:17
Direction of View	64° E of Grid North	Camera Height:	1.7m Above Ground Level		
Angle of View:	80°				



Existing View



Outline View

indicating physical position and scale of development irrespective of screening



- Knockharley Landfill (Existing and Proposed)
- Structures (Proposed)

These are 80° panoramic montages captured and presented in accordance with the guidance set by the British Landscape Institute 2011 - Advice Note 01/11.

To view these panoramas on a flat surface one must move from left to right along their length whilst maintaining a perpendicular viewing direction and the specified correct viewing distance of 30cm. To see this entire panoramic scene in reality would necessitate turning one's head through approx 80°.

Easting (ITM):	697949	Lens:	50mm / Full Frame Sensor	Date:	27-Jun-19
Northing (ITM):	767069	Camera:	Canon 1-D Mark II digital SLR	Time:	12:43
Direction of View	281° W of Grid North	Camera Height:	1.7m Above Ground Level		
Angle of View:	120°				





These are 80° panoramic montages captured and presented in accordance with the guidance set by the British Landscape Institute 2011 - Advice Note 01/11.

To view these panoramas on a flat surface one must move from left to right along its length whilst maintaining a perpendicular viewing direction and the specified correct viewing distance of 30cm. To see this entire panoramic scene in reality would necessitate turning one's head through 40°.

Easting (ITM):	697949	Lens:	50mm / Full Frame Sensor	Date:	27-Jun-19
Northing (ITM):	767069	Camera:	Canon 1-D Mark II digital SLR	Time:	12:43
Direction of View	281° W of Grid North	Camera Height:	1.7m Above Ground Level		
Angle of View:	120°				





These are 80° panoramic montages captured and presented in accordance with the guidance set by the British Landscape Institute 2011 - Advice Note 01/11.

To view these panoramas on a flat surface one must move from left to right along their length whilst maintaining a perpendicular viewing direction and the specified correct viewing distance of 30cm. To see this entire panoramic scene in reality would necessitate turning one's head through approx 40°.

Easting (ITM):	695158	Lens:	50mm / Full Frame Sensor	Date:	27-Jun-19
Northing (ITM):	760529	Camera:	Canon 1-D Mark II digital SLR	Time:	13:17
Direction of View:	20° E of Grid North	Camera Height:	1.7m Above Ground Level		
Angle of View:	80°				





These are 80° panoramic montages captured and presented in accordance with the guidance set by the British Landscape Institute 2011 - Advice Note 01/11.

To view these panoramas on a flat surface one must move from left to right along its length whilst maintaining a perpendicular viewing direction and the specified **correct viewing distance of 30cm**. To see this entire panoramic scene in reality would necessitate turning one's head through 40°.

Easting (ITM):	695158	Lens:	50mm / Full Frame Sensor	Date:	27-Jun-19
Northing (ITM):	760529	Camera:	Canon 1-D Mark II digital SLR	Time:	13:17
Direction of View:	20° E of Grid North	Camera Height:	1.7m Above Ground Level		
Angle of View:	80°				

