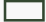
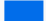




LEGEND

-  Site location
-  Existing Great Island power plant
-  Proposed Great Island power plant
-  20 Km radius from centre of proposals

Kilkenny County Development Plan 2008 - 2014

Area of High Amenity

- 6 - Area at Tipperary border
- 7 - Area bounded to north by N25 and to south and south east by the River Suir
- 8 - Barrow - Suir estuary between New Ross and Wexford
- 9 - Barrow - Nore River Valley

Scenic Views and Prospects

- V9 - View to south east over Barrow Valley on the N25, New Ross to Waterford road
- V21 - Views south west over the River Suir at Grannagh Castle to the Comeraghs
- V22 - Views over the confluence of Rivers Suir and Barrow at Snow Hill

Waterford County Development Plan 2005 - 2011

Sensitive Landscapes

Visually Vulnerable

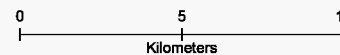
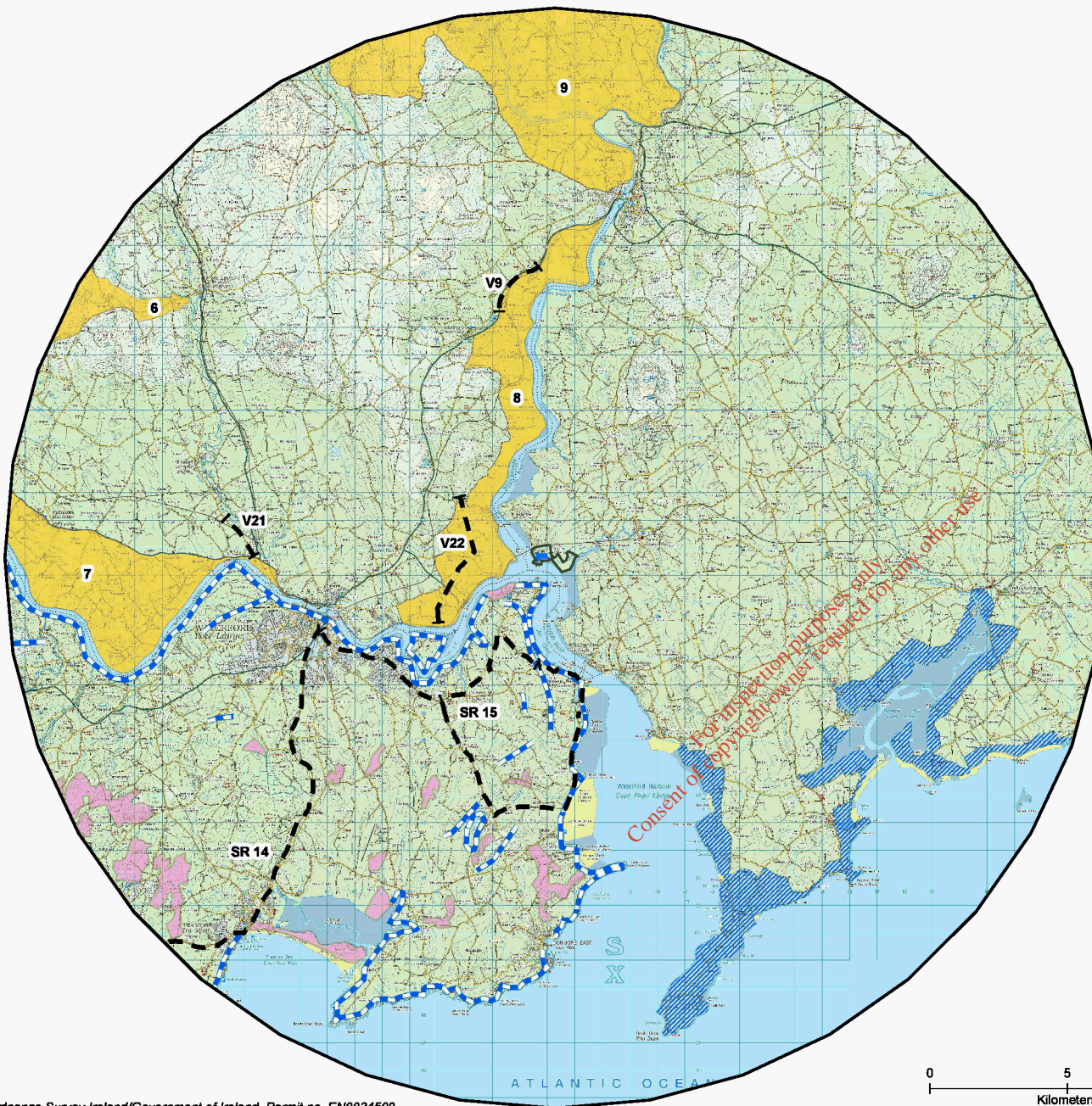
Coastlines, river banks, lake shores, headlands and promontories and skylines of upland areas

Scenic Routes

- SR 14 - From Ballyvoyle Head to Bunmahon via Fenner to Tramore and Waterford City
- SR 15 - From Waterford City to Belle Lake, via Woodstown to Waterford Harbour. North to Passage East, Cheekpoint returning to Waterford City.

Wexford County Development Plan 2007 - 2013

Coastal Zone Policy Areas



Base Map - © Ordnance Survey Ireland/Government of Ireland. Permit no. EN0034509



Suite 508, The Capel Building,
Mary's Abbey,
Dublin 7, Ireland.
Tel: +353(0)1 8147700



ERA-Maptec Ltd
4th Flr. 40 Lwr. O'Connell St,
Dublin 1, Ireland.
Tel: +353(0)1 8733117

Client

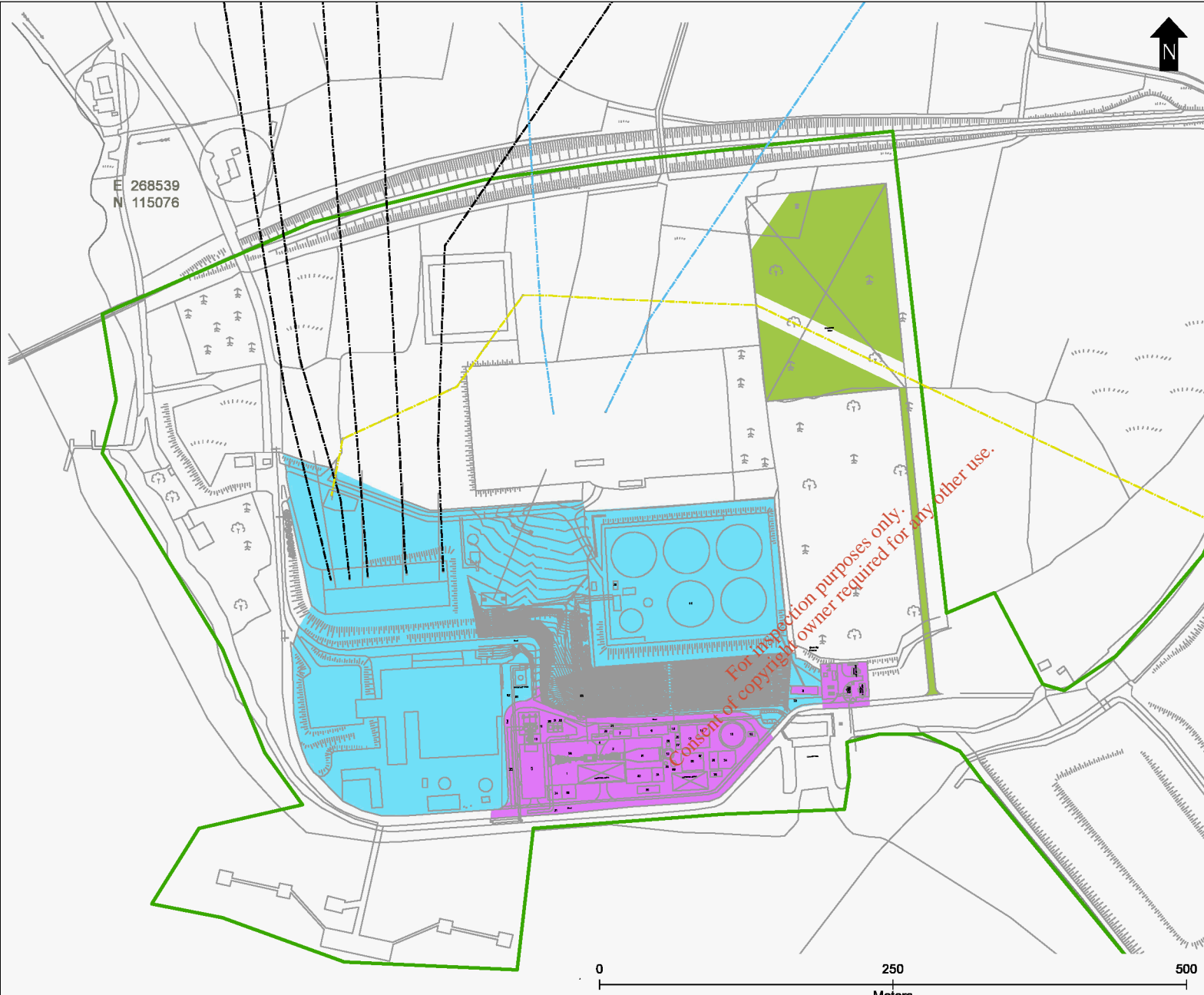


Endesa Ireland Ltd.
5th Floor,
3 Grand Canal Plaza,
Grand Canal Street Upper,
Dublin 4,
Ireland

Tel +353 (1) 552 8300
Fax +353 (1) 552 8301

Rev	Date	Drawn	Description	Ch'k'd	App'd

Title	Drawn	EV
FIGURE 16.5 - Landscape Designations	Checked	EOC
	Approved	EOC
	Scale	1:165,000
Drawing No.	Rev	Status



LEGEND

- Site location
- Existing Great Island power plant
- Proposed Great Island power plant

- Existing 38Kv powerline
- Existing 110Kv powerline
- Existing 220Kv Powerline

- Proposed woodland and shrub understorey planting

Base Map - © Ordnance Survey Ireland/Government of Ireland. Permit no. EN0034509



Suite 508, The Capel Building,
Mary's Abbey,
Dublin 7, Ireland.
Tel: +353(0)1 8147700



ERA-Maptec Ltd
4th Flr. 40 Lwr. O'Connell St,
Dublin 1, Ireland.
Tel: +353(0)1 8733117

Client



Endesa Ireland Ltd.
5th Floor,
3 Grand Canal Plaza,
Grand Canal Street Upper,
Dublin 4,
Ireland

Tel +353 (1) 552 8300
Fax +353 (1) 552 8301

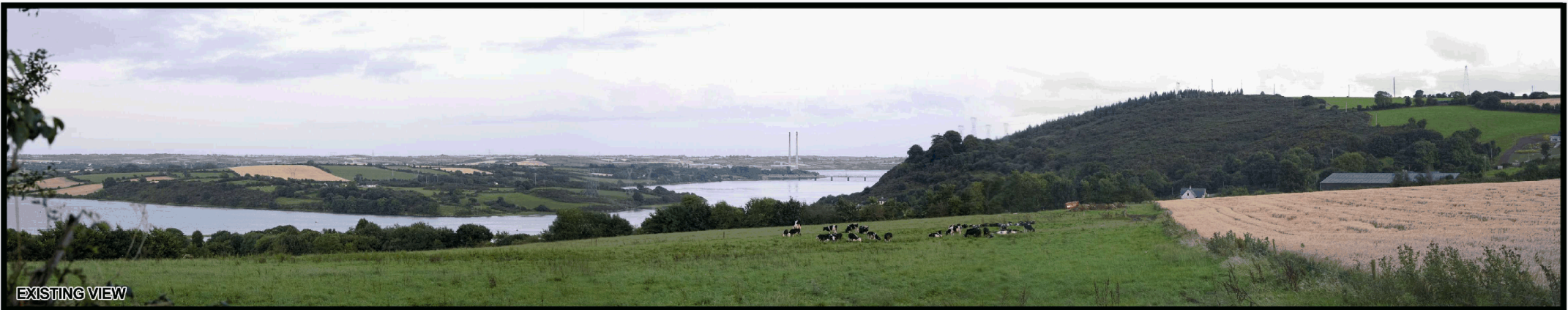
Rev	Date	Drawn	Description	Ch'k'd	App'd

FIGURE 16.6 - Landscape Mitigation	Drawn	EV
	Checked	EOC
	Approved	EOC
	Scale	1:3,500
Drawing No.	Rev	Status

For inspection purposes only.
Consent of copyright owner required for any other use.

16.4. Photomontages

*For inspection purposes only.
Consent of copyright owner required for any other use.*



EXISTING VIEW



PHOTOMONTAGE



PHOTOMONTAGE with planting mitigation measures equivalent to 10 years growth



Suite 508,
The Capel Building,
Mary's Abbey,
Dublin 7, Ireland.
Tel: +353 (0)1 814 7700



4th Floor,
40 Lwr O'Connell Street,
Dublin 1, Ireland.
Tel: +353 (0)1 873 3117

Client



5th Floor,
3 Grand Canal Plaza,
Grand Canal Street Upper
Dublin 4, Ireland
Tel: +353 (0)1 552 8300
Fax: +353 (0)1 552 8301

GRID REFERENCE: 266210 E
117051 N
DISTANCE: 3.5 Km
DIRECTION TO SITE: SE
HEIGHT AT EYE LEVEL AOD: 61 metres
PHOTOGRAPH TAKEN: 20.08.2009

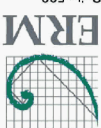


© Ordnance Survey Ireland Licence No. EN0034509

Title **Figure 16.7a: Viewpoint 2
Ballinlaw, Co. Kilkenny**

Drawn	EV
Checked	
Approved	

Images have a horizontal field of view of 77 degrees,
for a true representation, view print from a distance of
approximately 24.8cm at A3



Suite 508,
The Capel Building,
Mary's Abbey,
Dublin 7, Ireland.
Tel: +353 (0)1 814 7700



4th Floor,
40 Lwr O'Connell Street,
Dublin 1, Ireland.
Tel: +353 (0)1 873 3117



Client

5th Floor,
3 Grand Canal Plaza,
Grand Canal Street Upper,
Dublin 4, Ireland
Tel: +353 (0)1 552 8300
Fax: +353 (0)1 552 8301

GRID REFERENCE:

268611 E
113758 N
0.75 Km

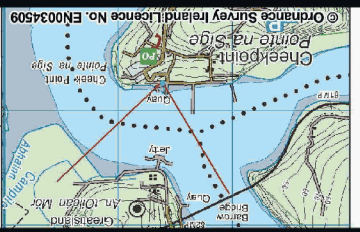
DIRECTION TO SITE:

NNE

HEIGHT AT EYE LEVEL AOD: 5 metres

PHOTOGRAPH TAKEN:

20.08.2009



© Ordnance Survey Ireland Licence No. EN0034509

Figure 16.7b - Viewpoint 6
Cheekpoint, Co. Waterford

EV	Drawn
	Checked
	Approved

Images have a horizontal field of view of 78 degrees, for a true representation, view print from a distance of approximately 24.4cm at A3

