

Mr Peter O'Leary
Aughnacureen
Killarney
County Kerry

Headquarters, PO Box 3000
Johnstown Castle Estate
County Wexford, Ireland
Y35 W821

Ceanncheathrú, Bosca Poist 3000
Eastát Chaisleán Bhaile Sheáin
Contae Loch Garman, Éire
Y35 W821

T: +353 53 9160600
F: +353 53 9160699
E: info@epa.ie
W: www.epa.ie

LoCall: 1890 33 55 99

06 September 2018

Reg. No: W0217-02

Review Application in respect of Killarney Waste Disposal Limited at Aughacureen, Killarney, Co Kerry, V93 K520

Dear Mr O'Leary

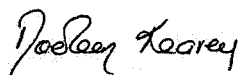
Further to your submission of 23/11/2011, received on 24/11/2011, in relation to a Review Application in respect of Killarney Waste Disposal Limited at Aughacureen, Killarney, County Kerry, V93 K520.

I am to advise you in accordance with Regulation 42(8)(a) of the European Communities (Birds and Natural Habitats) Regulations 2011 as amended, that the Agency has made a determination that an Appropriate Assessment is not required as the project, individually or in combination with other plans or projects, is not likely to have a significant effect on a European site(s). Notification of this determination is attached for your reference.

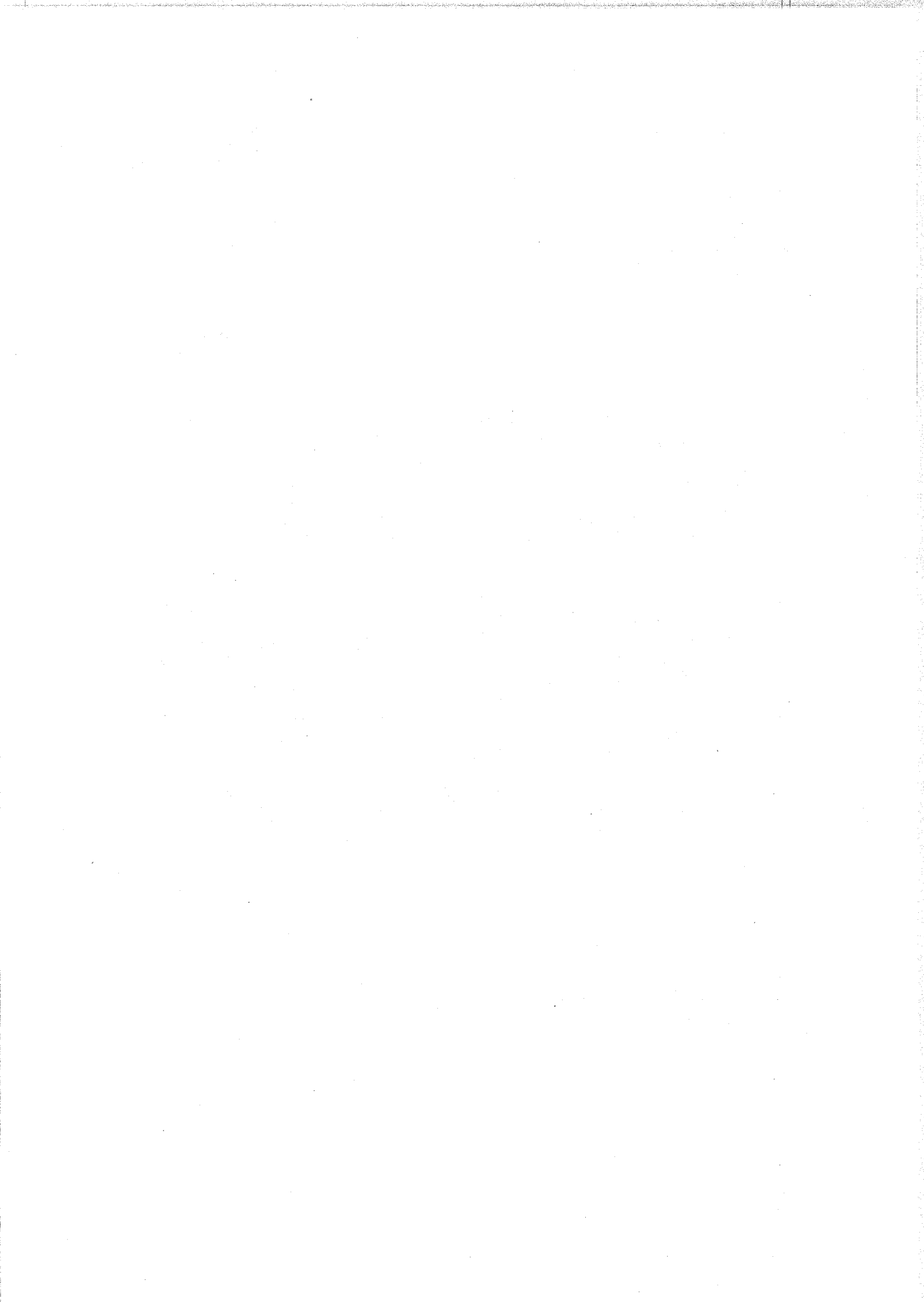
The application and associated correspondence, including acknowledgements, notifications and general correspondence are available to view on the Agency website at www.epa.ie. You are advised to refer to the website for information on the progress of the application.

Please direct any further correspondence in relation to this matter to Administration, Office of Climate, Licensing & Resource Use, Environmental Protection Agency, Headquarters, P.O. Box 3000, Johnstown Castle Estate, County Wexford.

Yours sincerely



Programme Officer
Environmental Licensing Programme
Office of Environmental Sustainability



Appendix 1

Appropriate Assessment Screening Determination

In accordance with Regulation 42(1) of the European Communities (Birds and Natural Habitats) Regulations 2011 as amended, the Agency has undertaken Appropriate Assessment screening to assess, in view of best scientific knowledge and the conservation objectives of the site, if the proposed activities, individually or in combination with other plans or projects is likely to have a significant effect on a European Site(s). In this context, particular attention was paid to the European Site(s) listed below.

Consent Details:

Reg. No.	W0217-02
Applicant Name:	Killarney Waste Disposal Unlimited Company.
Type of Consent Sought:	Waste licence.
Location of Facility:	Aughacurreen, Killarney, County Kerry.
Licence Application Date:	16 th July 2010.
European Site(s) assessed:	Castlemaine Harbour SAC (Site Code: 000343)
Date of AA Screening Determination:	27 th February 2018.

AA Screening Determination:

That the proposed activities are not directly connected with or necessary to the management of any European site and that it can be excluded, on the basis of objective information, that the proposed activities, individually or in combination with other plans or projects, will have a significant effect on any European site and accordingly determined that an Appropriate Assessment of the proposed activities was not required.

The reasons for this determination are as follows:

1. The current licence provides for two clean rainwater discharges from the roof of the main building directly to land drain at discharge locations R1 and R2.
 - Emission point R1 discharges to the road drain on the facility's south-eastern boundary which merges into the Aughacurreen Drain on the facility's north-eastern boundary;
 - Emission point R2 discharges directly to the Aughacurreen Drain;
 - The Aughacurreen Drain connects to the Aghalee Beg River located approx. 540m

from the facility. From this point the Aghalee Beg River flows approx. 1.8km until it merges with the Glanooragh River. The Glanooragh River flows another approx. 2.2km until it feeds into the Castlemaine Harbour SAC;

- The River waterbody Water Framework Directive Status for 2010 – 2015 for the Aughacurreen Drain and the Aghalee Beg River are unassigned. The status for the Glanooragh River is assigned, approx. 0.4km upstream of the SAC, as good status;
 - Rainwater discharges from the roof of the facility's main treatment building are unlikely to have any impact on the Castlemaine Harbour SAC located approx. 4.5km from the above SAC.
2. There are two percolation areas at the facility which provide for discharges to ground of treated sanitary effluent and of treated effluent from outdoor yard areas. Emissions to ground from the facility may indirectly impact the Aughacurreen Drain.

Schedule C.6 of the current licence (Reg. No. W0217-01) requires biannual receiving body monitoring of the groundwater body beneath the facility and the land drain both upstream of the site boundary and just downstream of the facility.

- Biannual groundwater monitoring has demonstrated that groundwater up-gradient of the facility has high ammonia and faecal coliform levels; however, due to other indicative parameters such as chloride and nitrate not being elevated this contamination has been attributed to agricultural activity rather than from down gradient on-site organic waste sources.
 - The Scartaglin groundwater body (European Code: IE_SW_G_073) is located beneath the site and the designated site is located on a surface waterbody approx. 2.2km north of the facility. It is unlikely that any groundwater beneath the site will impact the designated site which is situated on a surface water body.
 - Monitoring of the land drain upstream and downstream of the facility do not show an impact from discharges to ground at the facility.
 - Monitoring from 13th Dec. 2017 demonstrated that ammonia and pH were 0.02mg/l and 7.2 respectively in the upstream sample and 0.09mg/l and 7.3 in the downstream sample. These results are below the Environmental Quality Standard¹ for a river water body of good status.
 - The River water body Water Framework Directive Status for 2010 – 2015 for the Aughacurreen Drain and the Aghalee Beg River are unassigned. The Glanooragh River is assigned approx. 0.4km upstream of the SAC as good status.
3. Currently there are no point source emissions to air from the facility. As part of the licence review it has been proposed to channel the air from buildings storing putrescible waste to an odour abatement system which has a point source emission to air. An odour dispersion model was submitted with the application and it predicts that the emission will not have an impact on the receptors around the facility. The prevailing wind is from the southwest and the above designated site is located to the northeast; however, the emission to air from the facility is not likely to have an impact on the designated site located approx. 2.3km northeast of the facility.

¹ S.I. No. 272/2009 – *European Communities Environmental Objectives (Surface Waters) Regulations 2009*, as amended.

Caroline Murphy

Caroline Murphy
Office of Environmental Sustainability

Date: 20th July 2018





Environmental Protection Agency
An Ghníomhaireacht um Chaoimhnú Comhshaoil

Mr Brendan Dunne
Senior Environmental Health Officer
Health Service Executive
Environmental Health Service
Block C, Edward Court
Edward Street
Tralee
County Kerry

Headquarters, PO Box 3000
Johnstown Castle Estate
County Wexford, Ireland
Y35 W821

Ceanncheathrú, Bosca Poist 3000
Eastát Chaisleán Bhaile Sheáin
Contae Loch Garman, Éire
Y35 W821

T: +353 53 9160600
F: +353 53 9160699
E: info@epa.ie
W: www.epa.ie

LoCall: 1890 33 55 99

06 September 2018

Reg. No: W0217-02

Review Application in respect of Killarney Waste Disposal Limited at Aughacurreen, Killarney, Co Kerry, V93 K520

Dear Mr Dunne

Further to your submission of 19/02/2018, received on 19/02/2018, in relation to a Review Application in respect of Killarney Waste Disposal Limited at Aughacurreen, Killarney, Co Kerry, V93 K520.

I am to advise you in accordance with Regulation 42(8)(a) of the European Communities (Birds and Natural Habitats) Regulations 2011 as amended, that the Agency has made a determination that an Appropriate Assessment is not required as the project, individually or in combination with other plans or projects, is not likely to have a significant effect on a European site(s). Notification of this determination is attached for your reference.

The application and associated correspondence, including acknowledgements, notifications and general correspondence are available to view on the Agency website at www.epa.ie. You are advised to refer to the website for information on the progress of the application.

Please direct any further correspondence in relation to this matter to Administration, Office of Climate, Licensing & Resource Use, Environmental Protection Agency, Headquarters, P.O. Box 3000, Johnstown Castle Estate, County Wexford.

Yours sincerely

Programme Officer
Environmental Licensing Programme
Office of Environmental Sustainability





Appendix 1

Appropriate Assessment Screening Determination

In accordance with Regulation 42(1) of the European Communities (Birds and Natural Habitats) Regulations 2011 as amended, the Agency has undertaken Appropriate Assessment screening to assess, in view of best scientific knowledge and the conservation objectives of the site, if the proposed activities, individually or in combination with other plans or projects is likely to have a significant effect on a European Site(s). In this context, particular attention was paid to the European Site(s) listed below.

Consent Details:

Reg. No.	W0217-02
Applicant Name:	Killarney Waste Disposal Unlimited Company.
Type of Consent Sought:	Waste licence.
Location of Facility:	Aughacurreen, Killarney, County Kerry.
Licence Application Date:	16 th July 2010.
European Site(s) assessed:	Castlemaine Harbour SAC (Site Code: 000343)
Date of AA Screening Determination:	27 th February 2018.

AA Screening Determination:

That the proposed activities are not directly connected with or necessary to the management of any European site and that it can be excluded, on the basis of objective information, that the proposed activities, individually or in combination with other plans or projects, will have a significant effect on any European site and accordingly determined that an Appropriate Assessment of the proposed activities was not required.

The reasons for this determination are as follows:

1. The current licence provides for two clean rainwater discharges from the roof of the main building directly to land drain at discharge locations R1 and R2.
 - Emission point R1 discharges to the road drain on the facility's south-eastern boundary which merges into the Aughacurreen Drain on the facility's north-eastern boundary;
 - Emission point R2 discharges directly to the Aughacurreen Drain;
 - The Aughacurreen Drain connects to the Aghalee Beg River located approx. 540m

from the facility. From this point the Aghalee Beg River flows approx. 1.8km until it merges with the Glanooragh River. The Glanooragh River flows another approx. 2.2km until it feeds into the Castlemaine Harbour SAC;

- The River waterbody Water Framework Directive Status for 2010 – 2015 for the Aughacurreen Drain and the Aghalee Beg River are unassigned. The status for the Glanooragh River is assigned, approx. 0.4km upstream of the SAC, as good status;
 - Rainwater discharges from the roof of the facility's main treatment building are unlikely to have any impact on the Castlemaine Harbour SAC located approx. 4.5km from the above SAC.
2. There are two percolation areas at the facility which provide for discharges to ground of treated sanitary effluent and of treated effluent from outdoor yard areas. Emissions to ground from the facility may indirectly impact the Aughacurreen Drain.

Schedule C.6 of the current licence (Reg. No. W0217-01) requires biannual receiving body monitoring of the groundwater body beneath the facility and the land drain both upstream of the site boundary and just downstream of the facility.

- Biannual groundwater monitoring has demonstrated that groundwater up-gradient of the facility has high ammonia and faecal coliform levels; however, due to other indicative parameters such as chloride and nitrate not being elevated this contamination has been attributed to agricultural activity rather than from down gradient on-site organic waste sources.
 - The Scartaglin groundwater body (European Code: IE_SW_G_073) is located beneath the site and the designated site is located on a surface waterbody approx. 2.2km north of the facility. It is unlikely that any groundwater beneath the site will impact the designated site which is situated on a surface water body.
 - Monitoring of the land drain upstream and downstream of the facility do not show an impact from discharges to ground at the facility.
 - Monitoring from 13th Dec. 2017 demonstrated that ammonia and pH were 0.02mg/l and 7.2 respectively in the upstream sample and 0.09mg/l and 7.3 in the downstream sample. These results are below the Environmental Quality Standard¹ for a river water body of good status.
 - The River water body Water Framework Directive Status for 2010 – 2015 for the Aughacurreen Drain and the Aghalee Beg River are unassigned. The Glanooragh River is assigned approx. 0.4km upstream of the SAC as good status.
3. Currently there are no point source emissions to air from the facility. As part of the licence review it has been proposed to channel the air from buildings storing putrescible waste to an odour abatement system which has a point source emission to air. An odour dispersion model was submitted with the application and it predicts that the emission will not have an impact on the receptors around the facility. The prevailing wind is from the southwest and the above designated site is located to the northeast; however, the emission to air from the facility is not likely to have an impact on the designated site located approx. 2.3km northeast of the facility.

¹ S.I. No. 272/2009 – *European Communities Environmental Objectives (Surface Waters) Regulations 2009*, as amended.

Caroline Murphy

Caroline Murphy
Office of Environmental Sustainability

Date: 20th July 2018

