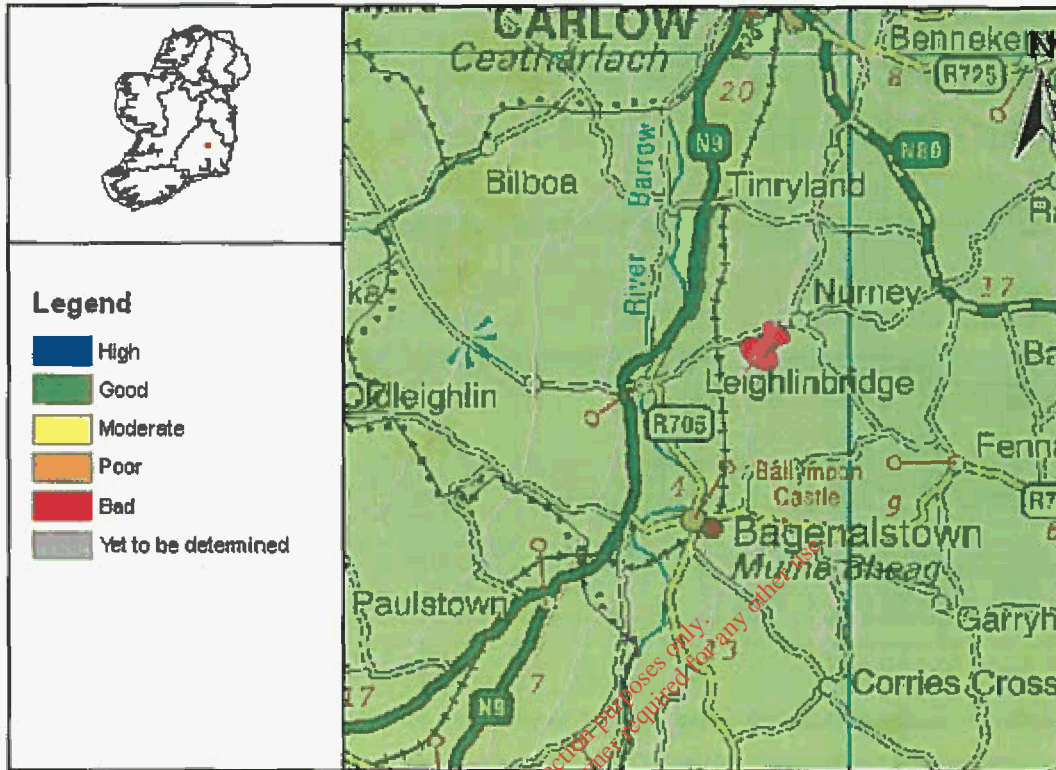


Groundwater

**Full Report for Waterbody Barrow Valley\_S**



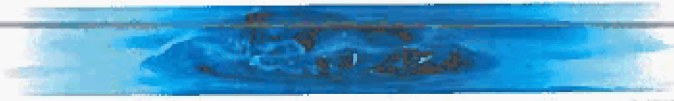
River Basin Management Plans (RBMPs) have been published for all River Basin Districts in Ireland in accordance with the requirements of the Water Framework Directive. The WaterMaps viewer is an integral part of the River Basin Management Plan and provides access to information at individual waterbody level and at Water Management Unit level for all the River Basin Districts in Ireland.

The following report provides summary plan information about the selected waterbody (indicated by the pin in the map above) relating to its status, risks, objectives, and measures proposed to retain status where this is adequate, or improve it where necessary. Waterbodies can relate to surface waters (these include rivers, lakes, estuaries [transitional waters], and coastal waters), or to groundwaters. Other relevant information not included in this report can be viewed using the WaterMaps viewer, including areas listed in the Register of Protected Areas.

You will find brief notes at the bottom of some of the individual report sheets that will help you in interpreting the information presented. More detailed information can be obtained in relation to all aspects of the RBMPs at [www.wfdireland.ie](http://www.wfdireland.ie).

Date Reported to Europe: July 2010

Date Report Created 25/05/2012



**Summary Information:**

**Water Management Unit:** N/A  
**WaterBody Category:** Groundwater Waterbody  
**WaterBody Name:** Barrow Valley\_S  
**WaterBody Code:** IE\_SE\_G\_020  
**Overall Status:** Good  
**Overall Objective:** Protect  
**Overall Risk:** 1a At Risk  
**Heavily Modified:** No



Report data based upon final RBMP, 2009-2015.

The information provided above is a summary of the principal findings related to the selected waterbody. Further details and explanation of individual elements of the report are outlined in the following pages.

*For inspection purposes only.  
Consent of copyright owner required for any other use.*

Date Reported to Europe: July 2010  
Date Report Created 25/05/2012



**Chemical and Quantitative Status Report**

**Water Management Unit:** N/A  
**WaterBody Category:** Groundwater Waterbody  
**WaterBody Name:** Barrow Valley\_S  
**WaterBody Code:** IE\_SE\_G\_020  
**Overall Status Result:** Good  
**Heavily Modified:** No



	<b>Status Element Description</b>	<b>Result</b>
<b>Status information</b>		
INS	Status associated with saline intrusion into groundwater	GS-HC
DWS	Status associated with exceedances of water quality above specific standards	GS-HC
DS	Chemical status of groundwater due to pressure from diffuse sources of pollution	GS-HC
CLS	Chemical status of groundwater due to pressure from contaminated soil or land.	GS-HC
MS	Chemical status of groundwater due to pressure from mine sites (active or closed).	GS-HC
UAS	Chemical status of groundwater due to pressures from urban areas	GS-HC
GWS	General groundwater quality status	GS-HC
RPS	Status associated with MRP loading to rivers	GS-LC
TNS	Status associated with nitrate loading to transitional and coastal waters	GS-LC
SWS	Overall status associated with nutrient loadings to rivers and transitional and coastal waters	GS-LC
SQS	Status associated with dependant surface water quantitative status	GS-HC
GDS	Groundwater dependant terrestrial ecosystems status	GS-HC
QSO	Quantitative status overall	GS-HC
CSO	Chemical status overall	GS-LC
OS	Overall status	<b>Good</b>

GS -HC : Good status High Confidence  
 GS- LC : Good status Low Confidence  
 n/a - not assessed

**Status**

By 'Status' we mean the condition of the water in the waterbody. It is defined by its chemical status and quantitative status, whichever is worse. Groundwaters are ranked in one of 2 status classes: Good or Poor.

You can read more about status and how it is measured in our RBMP Document Library at [www.wfdireland.ie](http://www.wfdireland.ie) (Directory 15 Status).

Date Reported to Europe: July 2010

Date Report Created 25/05/2012



<b>Risk Report</b>	
<b>Water Management Unit:</b>	N/A
<b>WaterBody Category:</b>	Groundwater Waterbody
<b>WaterBody Name:</b>	Barrow Valley_S
<b>WaterBody Code:</b>	IE_SE_G_020
<b>Overall Risk Result:</b>	<b>1a</b> At Risk
<b>Heavily Modified:</b>	No



	<b>Risk Test Description</b>	<b>Risk</b>
	<b>Groundwater Dependent Terrestrial Ecosystems</b>	
TE	GWDTE Risk	N/A
	<b>Groundwater Quality</b>	
DIF	Diffuse Elements (General) Risk	N/A
DW	Drinking Waters Risk	N/A
INT	Intrusions Risk	N/A
WB	Water Balance Risk	N/A
	<b>Groundwater Quality (General)</b>	
GQ	General Groundwater Quality Risk	N/A
	<b>Groundwater Quality (Point Risk)</b>	
CL	Contaminated Land Risk	N/A
LF	Landfill Risk	N/A
MI	Mine Risk	N/A
QY	Quarry Risk	N/A
UR	Urban Risk	N/A
UW	UWWT Risk	N/A
	<b>GW Diffuse Risk Sources</b>	
WB3	Mobile Nutrients (NO3)	N/A
WB4	Mobile Chemicals	N/A
WB5	Clustered OSWTs and leaking urban sewerage systems	N/A
	<b>GW Hydrology</b>	
WB1	Water balance - Abstraction	N/A
WB2	Abstraction - Intrusion	N/A

For inspection purposes only.  
 Consent of copyright owner required for any other use.

Date Reported to Europe: July 2010  
 Date Report Created 25/05/2012



GW Point Risk Sources		
WB10	Risk from Point sources of pollution - Contaminated Land	N/A
WB11	Risk from Point sources of pollution - Trade Effluent Discharges	N/A
WB12	Risk from Point sources of pollution - Urban Wastewater Discharges	N/A
WB6	Risk from Point sources of pollution - Mines	N/A
WB7	Risk from Point sources of pollution - Quarries	N/A
WB8	Risk from Point sources of pollution - Landfills	N/A
WB9	Risk from Point sources of pollution - Oil Industry Infrastructure	N/A
Overall Risk		
RA	Groundwater Overall - Worst Case	N/A
Risk Information		
CLR	Contaminated land risk	2b Not At Risk
DR	Risk of groundwater due to pressure from diffuse sources of pollution	2a Probably Not At Risk
DWR	Risk associated with exceedances of water quality above specific standards	2b Not At Risk
GDR	Groundwater dependant terrestrial ecosystems risk	2b Not At Risk
GWR	General groundwater quality risk	2a Probably Not At Risk
INR	Risk associated with saline intrusion into groundwater	2b Not At Risk
LR	Risk due to landfills sites/old closed dump sites	2b Not At Risk
MR	Mines risk	2b Not At Risk
NULL	Diffuse nitrates from agriculture risk	N/A
QR	Risk due to quarries	2b Not At Risk
RA	Revised risk assessment	1a At Risk
RPR	Risk associated with MRP loading to rivers	1a At Risk
SQR	Risk associated with dependant surface water quantitative status	2b Not At Risk
SWR	Overall risk associated with nutrient loadings to rivers and transitional and coastal waters	1a At Risk
TNR	Risk associated with nitrate loading to transitional and coastal waters	1a At Risk
UAR	Risk of groundwater due to pressures from urban areas	2b Not At Risk
UWR	Risk due to direct discharges of urban wastewater	2b Not At Risk

For inspection purposes only. Content of copyright owner required for any other use.

**Risk**

By 'risk' we mean the risk that a waterbody will not achieve good ecological or good chemical status/potential at least by 2015. To examine risk the various pressures acting on the waterbody were identified along with any evidence of impact on water status. Depending on the extent of the pressure and its potential for impact, and the amount of information available, the risk to the water body was placed in one of four categories: 1a at risk; 1b probably at risk; 2a probably not at risk; 2b not at risk. Note that '2008' after the risk category means that the risk assessment was revised in 2008. All other risks were determined as part of an earlier risk assessment in 2005.

You can read more about risk assessment in our 'WFD Risk Assessment Update' document in the RBMP document library, and other documents at [www.wfdireland.ie](http://www.wfdireland.ie) (Directory 31 Risk Assessments).

Date Reported to Europe: July 2010

Date Report Created 25/05/2012



**Objectives Report**

**Water Management Unit:** N/A  
**WaterBody Category:** Groundwater Waterbody  
**WaterBody Name:** Barrow Valley\_S  
**WaterBody Code:** IE\_SE\_G\_020  
**Overall Objective:** Protect  
**Heavily Modified:** No



<b>Objectives Description</b>		<b>Result</b>
<b>Extended timescale information</b>		
E1	Extended deadlines due to agricultural P	No Status
E2	Extended deadlines due to agricultural N	No Status
E3	Extended deadlines due to mines	No Status
E4	Extended deadlines due to urban areas	No Status
E5	Extended deadlines due to contaminated lands	No Status
EO	Extended deadlines - overall	No Status
<b>Objectives information</b>		
OB1	Prevent deterioration objective	Protect
OB2	Restore at least good status objective	No Status
OB3	Reduce chemical pollution objective	No Status
OB4	Protected areas objective	No Status
OBO	Overall objectives - objective	Protect

For inspection purposes only. Consent of copyright owner required for any other use.

**Extended timescales**

Extended timescales have been set for certain waters due to technical, economic, environmental or recovery constraints. Extended timescales are usually of one planning cycle (6 years, to 2021) but in some cases are two planning cycles (to 2027).

**Objectives**

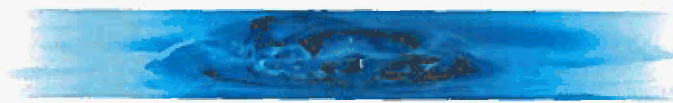
In general, we are required to ensure that our waters achieve at least good status/potential by 2015, and that their status does not deteriorate. Having identified the status of waters (this is given earlier in this report), the next stage is to set objectives for waters. Objectives consider waters that require protection from deterioration as well as waters that require restoration and the timescales needed for recovery. Four default objectives have been set initially:-

- Prevent Deterioration*
- Restore Good Status*
- Reduce Chemical Pollution*
- Achieve Protected Areas Objectives*

These objectives have been refined based on the measures available to achieve them, the latter's likely effectiveness, and consideration of cost-effective combinations of measures. Where it is considered necessary extended deadlines have been set for achieving objectives in 2021 or 2027.

Date Reported to Europe: July 2010

Date Report Created 25/05/2012



## Measures Report

**Water Management Unit:** N/A  
**WaterBody Category:** Groundwater Waterbody  
**WaterBody Name:** Barrow Valley\_S  
**WaterBody Code:** IE\_SE\_G\_020  
**Heavily Modified:** No



	<b>Measures Description</b>	<b>Applicable</b>
BC	Total number of basic measures which apply to this waterbody	24
BW	Directive - Bathing Waters Directive	No
BIR	Directive - Birds Directive	No
HAB	Directive - Habitats Directive	Yes
DW	Directive - Drinking Waters Directive	Yes
MAE	Directive - Major Accidents and Emergencies Directive	Yes
EIA	Directive - Environmental Impact Assessment Directive	Yes
SS	Directive - Sewage Sludge Directive	Yes
UWT	Directive - Urban Waste Water Treatment Directive	Yes
PPP	Directive - Plant Protection Products Directive	Yes
NIT	Directive - Nitrates Directive	Yes
IPC	Directive - Integrated Pollution Prevention Control Directive	Yes
CR	Other Stipulated Measure - Cost recovery for water use	Yes
SUS	Other Stipulated Measure - Promotion of efficient and sustainable water use	Yes
DWS	Other Stipulated Measure - Protection of drinking water sources	Yes
ABS	Other Stipulated Measure - Control of abstraction and impoundment	Yes
POI	Other Stipulated Measure - Control of point source discharges	Yes
DIF	Other Stipulated Measure - Control of diffuse source discharges	Yes
GW	Other Stipulated Measure - Authorisation of discharges to groundwaters	Yes
PS	Other Stipulated Measure - Control of priority substances	Yes
MOD	Other Stipulated Measure - Controls on physical modifications to surface waters	Yes
OA	Other Stipulated Measure - Controls on other activities impacting on water status	Yes
AP	Other Stipulated Measure - Prevention or reduction of the impact of accidental pollution incidents	Yes
OTS	On-site waste water treatment systems	Yes
FPM	Freshwater Pearl Mussel sub-basin plan	Yes
SHE	Shellfish Pollution Reduction Plan	No
IPR	IPPC licences requiring review	No
WPR	Water Pollution Act licences requiring review	No
FOR	Forestry guidelines and regulations	Yes

Date Reported to Europe: July 2010

Date Report Created 25/05/2012

# water matters

'Our Plan'



HQW	Protect high quality waters	Yes
-----	-----------------------------	-----

## Measures

Measures are necessary to ensure that we meet the objectives set out in the previous page of this report. Many measures are already provided for in national legislation and must be implemented. Other measures have been recently introduced or are under preparation. A range of additional potential measures are also being considered but require further development. Any agreed additional measures can be introduced through the update of Water Management Unit Action Plans during the implementation process.

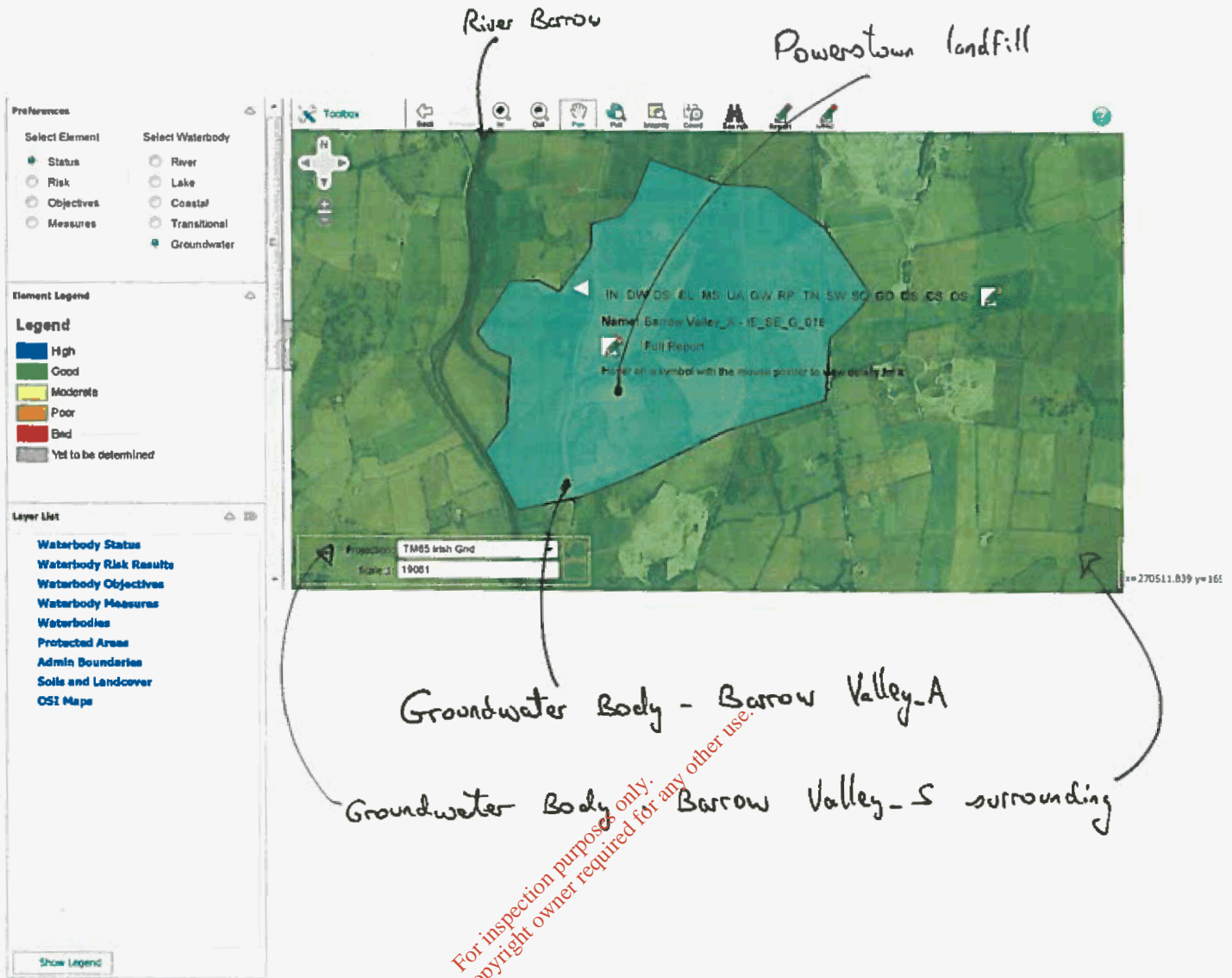
You can read more about Basic Measures in 'River Basin Planning Guidance' and in other documents in our RBMP Document Library at [www.wfdireland.ie](http://www.wfdireland.ie).

For inspection purposes only.  
Consent of copyright owner required for any other use.

Date Reported to Europe: July 2010

Date Report Created 25/05/2012



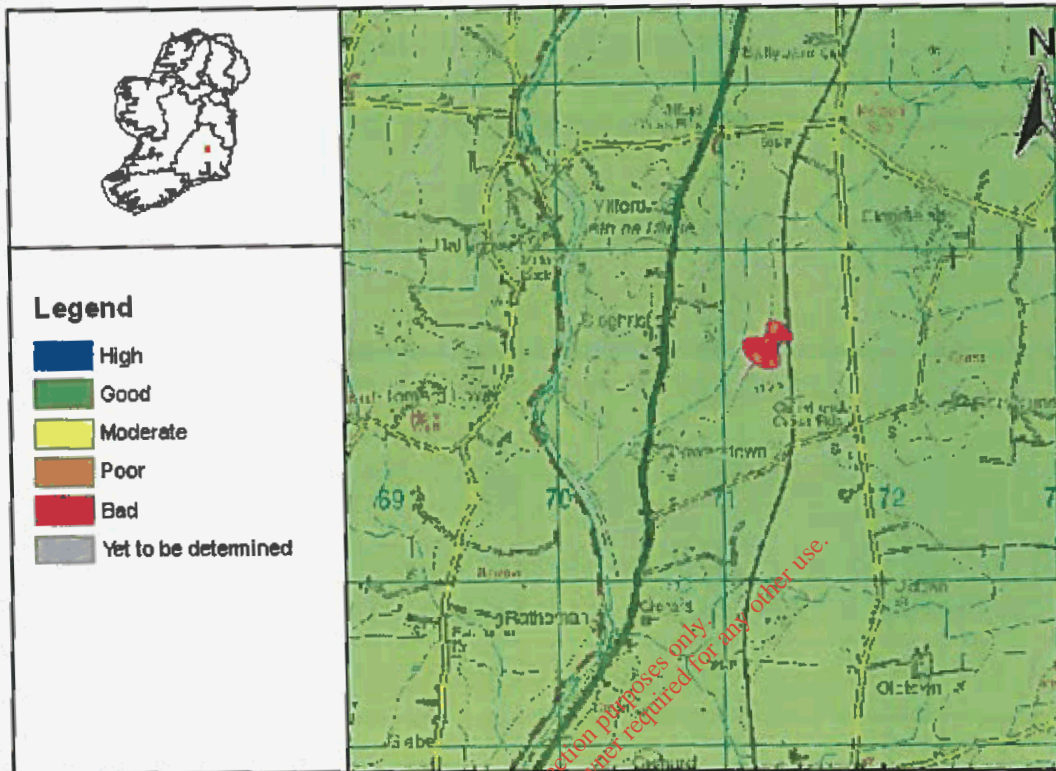


For inspection purposes only.  
Consent of copyright owner required for any other use.



Groundwater

**Full Report for Waterbody Barrow Valley\_A**



River Basin Management Plans (RBMPs) have been published for all River Basin Districts in Ireland in accordance with the requirements of the Water Framework Directive. The WaterMaps viewer is an integral part of the River Basin Management Plan and provides access to information at individual waterbody level and at Water Management Unit level for all the River Basin Districts in Ireland.

The following report provides summary plan information about the selected waterbody (indicated by the pin in the map above) relating to its status, risks, objectives, and measures proposed to retain status where this is adequate, or improve it where necessary. Waterbodies can relate to surface waters (these include rivers, lakes, estuaries [transitional waters], and coastal waters), or to groundwaters. Other relevant information not included in this report can be viewed using the WaterMaps viewer, including areas listed in the Register of Protected Areas.

You will find brief notes at the bottom of some of the individual report sheets that will help you in interpreting the information presented. More detailed information can be obtained in relation to all aspects of the RBMPs at [www.wfdireland.ie](http://www.wfdireland.ie).

Date Reported to Europe: July 2010

Date Report Created 25/05/2012



**Summary Information:**

**Water Management Unit:** N/A  
**WaterBody Category:** Groundwater Waterbody  
**WaterBody Name:** Barrow Valley\_A  
**WaterBody Code:** IE\_SE\_G\_018  
**Overall Status:** Good  
**Overall Objective:** Protect  
**Overall Risk:** 1a At Risk  
**Heavily Modified:** No



Report data based upon final RBMP, 2009-2015.

The information provided above is a summary of the principal findings related to the selected waterbody. Further details and explanation of individual elements of the report are outlined in the following pages.

For inspection purposes only.  
Consent of copyright owner required for any other use.

Date Reported to Europe: July 2010

Date Report Created 25/05/2012



## Chemical and Quantitative Status Report

**Water Management Unit:** N/A  
**WaterBody Category:** Groundwater Waterbody  
**WaterBody Name:** Barrow Valley\_A  
**WaterBody Code:** IE\_SE\_G\_018  
**Overall Status Result:** Good  
**Heavily Modified:** No



	Status Element Description	Result
<b>Status information</b>		
INS	Status associated with saline intrusion into groundwater	GS-HC
DWS	Status associated with exceedances of water quality above specific standards	GS-HC
DS	Chemical status of groundwater due to pressure from diffuse sources of pollution	GS-HC
CLS	Chemical status of groundwater due to pressure from contaminated soil or land.	GS-HC
MS	Chemical status of groundwater due to pressure from mine sites (active or closed).	GS-HC
UAS	Chemical status of groundwater due to pressures from urban areas	GS-HC
GWS	General groundwater quality status	GS-HC
RPS	Status associated with MRP loading to rivers	GS-LC
TNS	Status associated with nitrate loading to transitional and coastal waters	GS-LC
SWS	Overall status associated with nutrient loadings to rivers and transitional and coastal waters	GS-LC
SQS	Status associated with dependant surface water quantitative status	GS-HC
GDS	Groundwater dependant terrestrial ecosystems status	GS-HC
QSO	Quantitative status overall	GS-HC
CSO	Chemical status overall	GS-LC
OS	Overall status	<span style="background-color: green; color: white; padding: 2px;">Good</span>

GS -HC : Good status High Confidence  
 GS- LC : Good status Low Confidence  
 n/a - not assessed

### Status

By 'Status' we mean the condition of the water in the waterbody. It is defined by its chemical status and quantitative status, whichever is worse. Groundwaters are ranked in one of 2 status classes: Good or Poor.

You can read more about status and how it is measured in our RBMP Document Library at [www.wfdireland.ie](http://www.wfdireland.ie) (Directory 15 Status).

Date Reported to Europe: July 2010

Date Report Created 25/05/2012



**Risk Report**

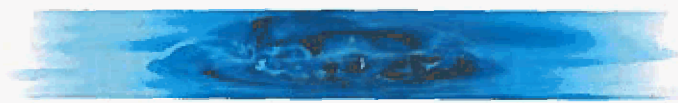
**Water Management Unit:** N/A  
**WaterBody Category:** Groundwater Waterbody  
**WaterBody Name:** Barrow Valley\_A  
**WaterBody Code:** IE\_SE\_G\_018  
**Overall Risk Result:** 1a At Risk  
**Heavily Modified:** No



	<b>Risk Test Description</b>	<b>Risk</b>
	<b>Groundwater Dependent Terrestrial Ecosystems</b>	
TE	GWDTE Risk	N/A
	<b>Groundwater Quality</b>	
DIF	Diffuse Elements (General) Risk	N/A
DW	Drinking Waters Risk	N/A
INT	Intrusions Risk	N/A
WB	Water Balance Risk	N/A
	<b>Groundwater Quality (General)</b>	
GQ	General Groundwater Quality Risk	N/A
	<b>Groundwater Quality (Point Risk)</b>	
CL	Contaminated Land Risk	N/A
LF	Landfill Risk	N/A
MI	Mine Risk	N/A
QY	Quarry Risk	N/A
UR	Urban Risk	N/A
UW	UWWT Risk	N/A
	<b>GW Diffuse Risk Sources</b>	
WB3	Mobile Nutrients (NO3)	N/A
WB4	Mobile Chemicals	N/A
WB5	Clustered OSWTs and leaking urban sewerage systems	N/A
	<b>GW Hydrology</b>	
WB1	Water balance - Abstraction	N/A
WB2	Abstraction - Intrusion	N/A

For inspection purposes only.  
Consent of copyright owner required for any other use.

Date Reported to Europe: July 2010  
 Date Report Created 25/05/2012



GW Point Risk Sources		
WB10	Risk from Point sources of pollution - Contaminated Land	N/A
WB11	Risk from Point sources of pollution - Trade Effluent Discharges	N/A
WB12	Risk from Point sources of pollution - Urban Wastewater Discharges	N/A
WB6	Risk from Point sources of pollution - Mines	N/A
WB7	Risk from Point sources of pollution - Quarries	N/A
WB8	Risk from Point sources of pollution - Landfills	N/A
WB9	Risk from Point sources of pollution - Oil Industry Infrastructure	N/A
Overall Risk		
RA	Groundwater Overall - Worst Case	N/A
Risk information		
CLR	Contaminated land risk	2b Not At Risk
DR	Risk of groundwater due to pressure from diffuse sources of pollution	2a Probably Not At Risk
DWR	Risk associated with exceedances of water quality above specific standards	2b Not At Risk
GDR	Groundwater dependant terrestrial ecosystems risk	2b Not At Risk
GWR	General groundwater quality risk	1b Probably At Risk
INR	Risk associated with saline intrusion into groundwater	2b Not At Risk
LR	Risk due to landfills sites/old closed dump sites	1b Probably At Risk
MR	Mines risk	2b Not At Risk
NULL	Diffuse nitrates from agriculture risk	N/A
QR	Risk due to quarries	2b Not At Risk
RA	Revised risk assessment	1a At Risk
RPR	Risk associated with MRP loading to rivers	1a At Risk
SQR	Risk associated with dependant surface water quantitative status	2b Not At Risk
SWR	Overall risk associated with nutrient loadings to rivers and transitional and coastal waters	1a At Risk
TNR	Risk associated with nitrate loading to transitional and coastal waters	1a At Risk
UAR	Risk of groundwater due to pressures from urban areas	2b Not At Risk
UWR	Risk due to direct discharges of urban wastewater	2b Not At Risk

For inspection purposes only. Consent of copyright owner required for any other use.

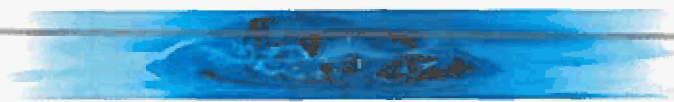
**Risk**

By 'risk' we mean the risk that a waterbody will not achieve good ecological or good chemical status/potential at least by 2015. To examine risk the various pressures acting on the waterbody were identified along with any evidence of impact on water status. Depending on the extent of the pressure and its potential for impact, and the amount of information available, the risk to the water body was placed in one of four categories: 1a at risk; 1b probably at risk; 2a probably not at risk; 2b not at risk. Note that '2008' after the risk category means that the risk assessment was revised in 2008. All other risks were determined as part of an earlier risk assessment in 2005.

You can read more about risk assessment in our 'WFD Risk Assessment Update' document in the RBMP document library, and other documents at [www.wfdireland.ie](http://www.wfdireland.ie) (Directory 31 Risk Assessments).

Date Reported to Europe: July 2010

Date Report Created 25/05/2012



**Objectives Report**

**Water Management Unit:** N/A  
**WaterBody Category:** Groundwater Waterbody  
**WaterBody Name:** Barrow Valley\_A  
**WaterBody Code:** IE\_SE\_G\_018  
**Overall Objective:** Protect  
**Heavily Modified:** No



<b>Objectives Description</b>		<b>Result</b>
<b>Extended timescale information</b>		
E1	Extended deadlines due to agricultural P	No Status
E2	Extended deadlines due to agricultural N	No Status
E3	Extended deadlines due to mines	No Status
E4	Extended deadlines due to urban areas	No Status
E5	Extended deadlines due to contaminated lands	No Status
EO	Extended deadlines - overall	No Status
<b>Objectives information</b>		
OB1	Prevent deterioration objective	Protect
OB2	Restore at least good status objective	No Status
OB3	Reduce chemical pollution objective	No Status
OB4	Protected areas objective	No Status
OBO	Overall objectives - objective	Protect

Consent of copyright owner required for any other use.

**Extended timescales**

Extended timescales have been set for certain waters due to technical, economic, environmental or recovery constraints. Extended timescales are usually of one planning cycle (6 years, to 2021) but in some cases are two planning cycles (to 2027).

**Objectives**

In general, we are required to ensure that our waters achieve at least good status/potential by 2015, and that their status does not deteriorate. Having identified the status of waters (this is given earlier in this report), the next stage is to set objectives for waters. Objectives consider waters that require protection from deterioration as well as waters that require restoration and the timescales needed for recovery. Four default objectives have been set initially:-

- Prevent Deterioration*
- Restore Good Status*
- Reduce Chemical Pollution*
- Achieve Protected Areas Objectives*

These objectives have been refined based on the measures available to achieve them, the latter's likely effectiveness, and consideration of cost-effective combinations of measures. Where it is considered necessary extended deadlines have been set for achieving objectives in 2021 or 2027.

Date Reported to Europe: July 2010

Date Report Created 25/05/2012





**Measures Report**

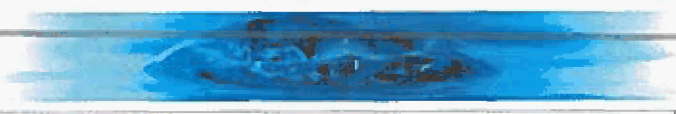
**Water Management Unit:** N/A  
**WaterBody Category:** Groundwater Waterbody  
**WaterBody Name:** Barrow Valley\_A  
**WaterBody Code:** IE\_SE\_G\_018  
**Heavily Modified:** No



	<b>Measures Description</b>	<b>Applicable</b>
BC	Total number of basic measures which apply to this waterbody	23
BW	Directive - Bathing Waters Directive	No
BIR	Directive - Birds Directive	No
HAB	Directive - Habitats Directive	Yes
DW	Directive - Drinking Waters Directive	Yes
MAE	Directive - Major Accidents and Emergencies Directive	Yes
EIA	Directive - Environmental Impact Assessment Directive	Yes
SS	Directive - Sewage Sludge Directive	Yes
UWT	Directive - Urban Waste Water Treatment Directive	Yes
PPP	Directive - Plant Protection Products Directive	Yes
NIT	Directive - Nitrates Directive	Yes
IPC	Directive - Integrated Pollution Prevention Control Directive	Yes
CR	Other Stipulated Measure - Cost recovery for water use	Yes
SUS	Other Stipulated Measure - Promotion of efficient and sustainable water use	Yes
DWS	Other Stipulated Measure - Protection of drinking water sources	Yes
ABS	Other Stipulated Measure - Control of abstraction and impoundment	Yes
POI	Other Stipulated Measure - Control of point source discharges	Yes
DIF	Other Stipulated Measure - Control of diffuse source discharges	Yes
GW	Other Stipulated Measure - Authorisation of discharges to groundwaters	Yes
PS	Other Stipulated Measure - Control of priority substances	Yes
MOD	Other Stipulated Measure - Controls on physical modifications to surface waters	Yes
OA	Other Stipulated Measure - Controls on other activities impacting on water status	Yes
AP	Other Stipulated Measure - Prevention or reduction of the impact of accidental pollution incidents	Yes
OTS	On-site waste water treatment systems	Yes
FPM	Freshwater Pearl Mussel sub-basin plan	No
SHE	Shellfish Pollution Reduction Plan	No
IPR	IPPC licences requiring review	No
WPR	Water Pollution Act licences requiring review	No
FOR	Forestry guidelines and regulations	Yes

Date Reported to Europe: July 2010

Date Report Created 25/05/2012



HQW	Protect high quality waters	Yes
-----	-----------------------------	-----

**Measures**

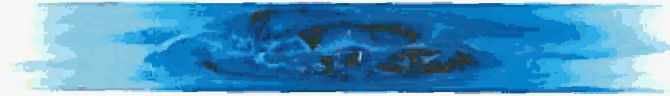
Measures are necessary to ensure that we meet the objectives set out in the previous page of this report. Many measures are already provided for in national legislation and must be implemented. Other measures have been recently introduced or are under preparation. A range of additional potential measures are also being considered but require further development. Any agreed additional measures can be introduced through the update of Water Management Unit Action Plans during the implementation process.

You can read more about Basic Measures in 'River Basin Planning Guidance' and in other documents in our RBMP Document Library at [www.wfdireland.ie](http://www.wfdireland.ie).

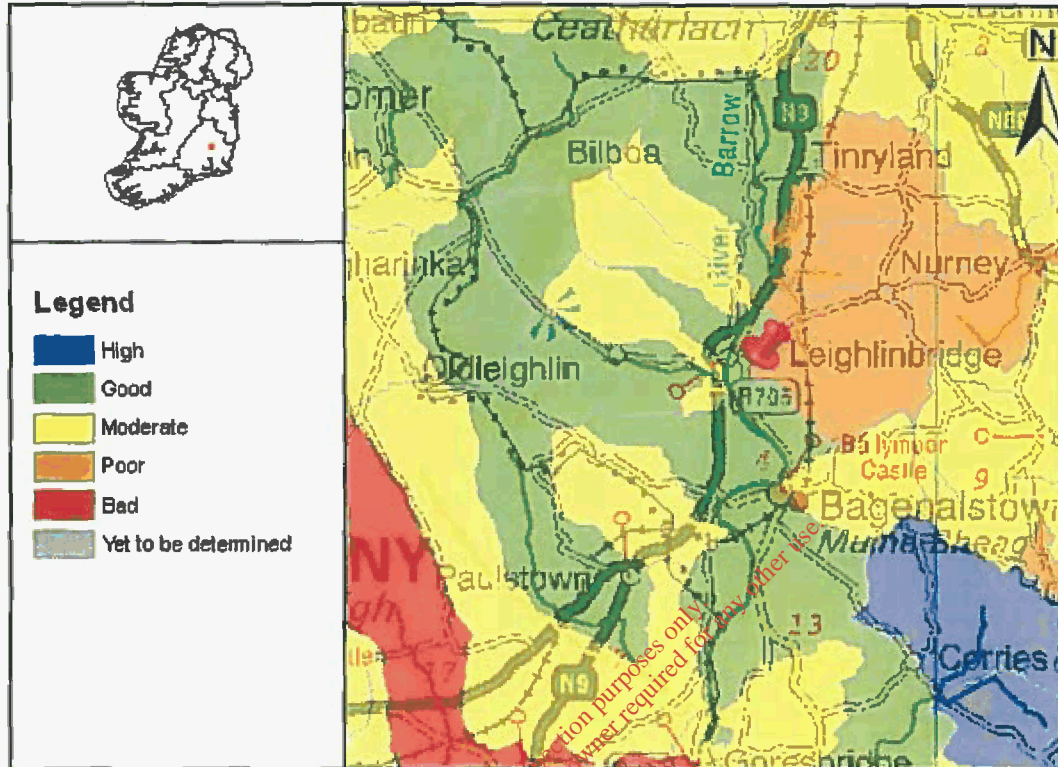
*For inspection purposes only.  
Consent of copyright owner required for any other use.*

Date Reported to Europe: July 2010

Date Report Created 25/05/2012



**Full Report for Waterbody Barrow, Trib of Barrow**



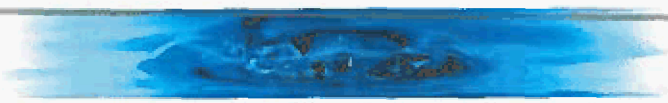
River Basin Management Plans (RBMPs) have been published for all River Basin Districts in Ireland in accordance with the requirements of the Water Framework Directive. The WaterMaps viewer is an integral part of the River Basin Management Plan and provides access to information at individual waterbody level and at Water Management Unit level for all the River Basin Districts in Ireland.

The following report provides summary plan information about the selected waterbody (indicated by the pin in the map above) relating to its status, risks, objectives, and measures proposed to retain status where this is adequate, or improve it where necessary. Waterbodies can relate to surface waters (these include rivers, lakes, estuaries [transitional waters], and coastal waters), or to groundwaters. Other relevant information not included in this report can be viewed using the WaterMaps viewer, including areas listed in the Register of Protected Areas.

You will find brief notes at the bottom of some of the individual report sheets that will help you in interpreting the information presented. More detailed information can be obtained in relation to all aspects of the RBMPs at [www.wfdireland.ie](http://www.wfdireland.ie).

Date Reported to Europe: July 2010

Date Report Created 20/04/2012



**Summary Information:**

**Water Management Unit:** IE\_SE\_BarrowMain  
**WaterBody Category:** River Waterbody  
**WaterBody Name:** Barrow, Trib of Barrow  
**WaterBody Code:** IE\_SE\_14\_196\_5  
**Overall Status:** Good  
**Overall Objective:** Protect  
**Overall Risk:** 1a At Risk  
**Heavily Modified:** No



Report data based upon final RBMP, 2009-2015.

The information provided above is a summary of the principal findings related to the selected waterbody. Further details and explanation of individual elements of the report are outlined in the following pages.

*For inspection purposes only.  
Consent of copyright owner required for any other use.*

Date Reported to Europe: July 2010

Date Report Created 20/04/2012



**Status Report**

**Water Management Unit:** IE\_SE\_BarrowMain  
**WaterBody Category:** River Waterbody  
**WaterBody Name:** Barrow, Trib of Barrow  
**WaterBody Code:** IE\_SE\_14\_196\_5  
**Overall Status Result:** **Good**  
**Heavily Modified:** No



	<b>Status Element Description</b>	<b>Result</b>
<b>Status information</b>		
Q	Macroinvertebrate status	<b>Good</b>
PC	General physico-chemical status	<b>Good</b>
FPQ	Freshwater Pearl Mussel / Macroinvertebrate status	N/A
DIA	Diatoms status	N/A
HYM	Hydromorphology status	N/A
FIS	Fish status	N/A
SP	Specific Pollutants status (SP)	N/A
ES	Overall ecological status	<b>Good</b>
CS	Overall chemical status (PAS)	n/a
EXT	Extrapolated status	N/A
MON	Monitored water body	YES
DON	Donor water bodies	N/A

Consent of copyright owner required for any other use.  
For inspection purposes only.

n/a - not assessed

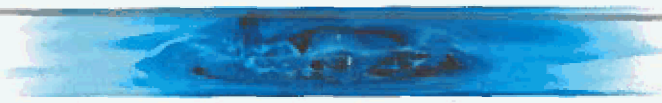
**Status**

By 'Status' we mean the condition of the water in the waterbody. It is defined by its chemical status and its ecological status, whichever is worse. Waters are ranked in one of 5 status classes: High, Good, Moderate, Poor, Bad. However, not all waterbodies have been monitored, and in such cases the status of a similar nearby waterbody has been used (extrapolated) to assign status. If this has been done the first line of the status report shows the code of the waterbody used to extrapolate.

You can read more about status and how it is measured in our RBMP Document Library at [www.wfdireland.ie](http://www.wfdireland.ie) (Directory 15 Status).

Date Reported to Europe: July 2010

Date Report Created 20/04/2012



**Risk Report**

**Water Management Unit:** IE\_SE\_BarrowMain  
**WaterBody Category:** River Waterbody  
**WaterBody Name:** Barrow, Trib of Barrow  
**WaterBody Code:** IE\_SE\_14\_196\_5  
**Overall Risk Result:** 1a At Risk  
**Heavily Modified:** No

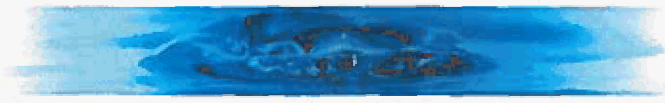


Risk Test Description	Risk
<b>Diffuse Risk Sources</b>	
RD1 EPA diffuse model (2008)	<span style="background-color: #1a3a5a; color: white; padding: 2px;">1a</span> At Risk
RD2a Road Wash - Soluble Copper	<span style="background-color: #c09090; color: white; padding: 2px;">2b</span> Not At Risk
RD2b Road Wash - Total Zinc	<span style="background-color: #c09090; color: white; padding: 2px;">2b</span> Not At Risk
RD2c Road Wash - Total Hydrocarbons	<span style="background-color: #c09090; color: white; padding: 2px;">2b</span> Not At Risk
RD3 Railways	<span style="background-color: #c09090; color: white; padding: 2px;">2b</span> Not At Risk
RD4a Forestry - Acidification (2008)	<span style="background-color: #c09090; color: white; padding: 2px;">2b</span> Not At Risk
RD4b Forestry - Suspended Solids (2008)	<span style="background-color: #c09090; color: white; padding: 2px;">2b</span> Not At Risk
RD4c Forestry - Eutrophication (2008)	<span style="background-color: #c09090; color: white; padding: 2px;">2a</span> Probably Not At Risk
RD5 Overall Unsewered (2008)	<span style="background-color: #c09090; color: white; padding: 2px;">2b</span> Not At Risk
RD5a Unsewered Areas - Pathogens (2008)	<span style="background-color: #c09090; color: white; padding: 2px;">2a</span> Probably Not At Risk
RD5b Unsewered Phosphorus (2008)	<span style="background-color: #c09090; color: white; padding: 2px;">2b</span> Not At Risk
RD6a Arable	<span style="background-color: #c09090; color: white; padding: 2px;">2a</span> Probably Not At Risk
RD6b Sheep Dip	<span style="background-color: #c09090; color: white; padding: 2px;">2b</span> Not At Risk
RD6c Forestry - Dangerous Substances	<span style="background-color: #c09090; color: white; padding: 2px;">2b</span> Not At Risk
RDO Diffuse Overall -Worst Case (2008)	<span style="background-color: #1a3a5a; color: white; padding: 2px;">1a</span> At Risk
<b>Hydrology</b>	
RHY1 Water balance - Abstraction	N/A
<b>Morphological Risk Sources</b>	
RM1 Channelisation (2008)	<span style="background-color: #c09090; color: white; padding: 2px;">2b</span> Not At Risk
RM2 Embankments (2008)	<span style="background-color: #c09090; color: white; padding: 2px;">2b</span> Not At Risk
RM3 Impoundments	<span style="background-color: #c09090; color: white; padding: 2px;">2b</span> Not At Risk
RM4 Water Regulation	<span style="background-color: #c09090; color: white; padding: 2px;">2b</span> Not At Risk
RM5 Intensive Landuse	N/A
RMO Morphology Overall - Worst Case (2008)	<span style="background-color: #c09090; color: white; padding: 2px;">2b</span> Not At Risk
<b>Overall Risk</b>	
RA Rivers Overall - Worst Case (2008)	<span style="background-color: #1a3a5a; color: white; padding: 2px;">1a</span> At Risk

For inspection purposes only. Consent of copyright owner required for any other use.

Date Reported to Europe: July 2010

Date Report Created 20/04/2012



Point Risk Sources		
RP1	WWTPs (2008)	1a At Risk
RP2	CSOs	1b Probably At Risk
RP3	IPPCs (2008)	2b Not At Risk
RP4	Section 4s (2008)	1a At Risk
RP5	WTPs/Mines/Quarries/Landfills	N/A
RPO	Overall Risk from Point Sources - Worst Case (2008)	1a At Risk
Q Value		
Q	EPA Q rating and Margaritifera Assessment	N/A
Q/RDI or Point/Diffuse		
QPD	Q class/EPA Diffuse Model or worst case of Point and Diffuse (2008)	1a At Risk
Rivers Direct Impacts		
RDI1	Rivers Direct Impacts - Dangerous Substances	N/A

**Risk**

By 'risk' we mean the risk that a waterbody will not achieve good ecological or good chemical status/potential at least by 2015. To examine risk the various pressures acting on the waterbody were identified along with any evidence of impact on water status. Depending on the extent of the pressure and its potential for impact and the amount of information available, the risk to the water body was placed in one of four categories: 1a at risk; 1b probably at risk; 2a probably not at risk; 2b not at risk. Note that '2008' after the risk category means that the risk assessment was revised in 2008. All other risks were determined as part of an earlier risk assessment in 2005.

You can read more about risk assessment in our 'WFD Risk Assessment Update' document in the RBMP document library, and other documents at [www.wfdireland.ie](http://www.wfdireland.ie) (Directory 31 Risk Assessments).

For inspection purposes only. Consent of copyright owner required for distribution.

Date Reported to Europe: July 2010

Date Report Created 20/04/2012



**Objectives Report**

**Water Management Unit:** IE\_SE\_BarrowMain

**WaterBody Category:** River Waterbody

**WaterBody Name:** Barrow, Trib of Barrow

**WaterBody Code:** IE\_SE\_14\_196\_5

**Overall Objective:** Protect

**Heavily Modified:** No



<b>Objectives Description</b>		<b>Result</b>
<b>Extended timescale information</b>		
E1	Extended timescales due to time requirements to upgrade WWTP discharges	No Status
E2	Extended timescales due to delayed recovery of chemical pollution and chemical status failures	No Status
E3	Extended timescales due to delayed recovery following reduction in agricultural nutrient losses	No Status
E4	Extended timescales due to delayed recovery from physical modifications and physical damage	No Status
E5	Extended timescales due to delayed recovery following implementing forestry acidification measures	No Status
E6	Extended timescales due to physical recovery timescales at mines and contaminated sites	No Status
E7	Extended timescales due to delayed recovery of highly impacted sites	No Status
E8	Extended timescales due to delayed recovery following reduction in agricultural nutrient losses	No Status
E9	Extended timescales due to delayed recovery from nitrogen losses to estuaries	No Status
E10	Extended timescales due to delayed recovery following reduction in agricultural nutrient losses	No Status
E11	Extended timescales due to delayed recovery from physical modifications and physical damage (overgrazing)	No Status
E12	Extended timescales due to delayed recovery from physical modifications and physical damage (channellisation)	No Status
E13	Extended timescales from Northern Ireland Environment Agency	No Status
EOV	Overall extended timescale - combination of all extended timescales fields	No Status
E14	Extended timescales due to the presence of Freshwater Pearl Mussel populations	No Status
EX15	Extended timescales due to highly impacted sites	No Status

Date Reported to Europe: July 2010

Date Report Created 20/04/2012





Objectives information		
OB1	Prevent deterioration objective	No Status
OB2	Restore at least good status objective	No Status
OB3	Reduce chemical pollution objective	No Status
OB4	Protected areas objective	Protect
OB5	Northern Ireland Environment Agency objective	No Status
OBO	Overall objectives	Protect

**Extended timescales**

Extended timescales have been set for certain waters due to technical, economic, environmental or recovery constraints. Extended timescales are usually of one planning cycle (6 years, to 2021) but in some cases are two planning cycles (to 2027).

**Objectives**

In general, we are required to ensure that our waters achieve at least good status/potential by 2015, and that their status does not deteriorate. Having identified the status of waters (this is given earlier in this report), the next stage is to set objectives for waters. Objectives consider waters that require protection from deterioration as well as waters that require restoration and the timescales needed for recovery. Four default objectives have been set initially:-

- Prevent Deterioration*
- Restore Good Status*
- Reduce Chemical Pollution*
- Achieve Protected Areas Objectives*

These objectives have been refined based on the measures available to achieve them, the latter's likely effectiveness, and consideration of cost-effective combinations of measures. Where it is considered necessary extended deadlines have been set for achieving objectives in 2021 or 2027.

For inspection purposes only. Consent of copyright owner required for any other use.

Date Reported to Europe: July 2010

Date Report Created 20/04/2012



**Measures Report**

**Water Management Unit:** IE\_SE\_BarrowMain  
**WaterBody Category:** River Waterbody  
**WaterBody Name:** Barrow, Trib of Barrow  
**WaterBody Code:** IE\_SE\_14\_196\_5  
**Heavily Modified:** No



	<b>Measures Description</b>	<b>Applicable</b>
BC	Total number of basic measures which apply to this waterbody	24
BW	Directive - Bathing Waters Directive	No
BIR	Directive - Birds Directive	No
HAB	Directive - Habitats Directive	Yes
DW	Directive - Drinking Waters Directive	No
MAE	Directive - Major Accidents and Emergencies Directive	Yes
EIA	Directive - Environmental Impact Assessment Directive	Yes
SS	Directive - Sewage Sludge Directive	Yes
UWT	Directive - Urban Waste Water Treatment Directive	Yes
PPP	Directive - Plant Protection Products Directive	Yes
NIT	Directive - Nitrates Directive	Yes
IPC	Directive - Integrated Pollution Prevention Control Directive	Yes
CR	Other Stipulated Measure - Cost recovery for water use	Yes
SUS	Other Stipulated Measure - Promotion of efficient and sustainable water use	Yes
DWS	Other Stipulated Measure - Protection of drinking water sources	Yes
ABS	Other Stipulated Measure - Control of abstraction and impoundment	Yes
POI	Other Stipulated Measure - Control of point source discharges	Yes
DIF	Other Stipulated Measure - Control of diffuse source discharges	Yes
PS	Other Stipulated Measure - Control of priority substances	Yes
MOD	Other Stipulated Measure - Controls on physical modifications to surface waters	Yes
OA	Other Stipulated Measure - Controls on other activities impacting on water status	Yes
AP	Other Stipulated Measure - Prevention or reduction of the impact of accidental pollution incidents	Yes
TP1	WSIP - Agglomerations with treatment plants requiring capital works	Yes
TP2	WSIP - Agglomerations with treatment plants requiring further investigation prior to capital works	No
TP3	WSIP - Agglomerations requiring the implementation of actions identified in Shellfish PRPs	No
TP4	WSIP - Agglomerations with treatment plants requiring improved operational performance	Yes
TP5	WSIP - Agglomerations requiring investigation of CSOs	No

For inspection purposes only. Consent of copyright owner required for any other use.

Date Reported to Europe: July 2010

Date Report Created 20/04/2012

# water matters

*'Our Plan'*



TP6	WSIP - Agglomerations where existing treatment capacity is currently adequate but predicted loadings would result in overloading	No
OTS	On-site waste water treatment systems	Yes
FPM	Freshwater Pearl Mussel sub-basin plan	Yes
SHE	Shellfish Pollution Reduction Plan	No
IPR	IPPC licences requiring review	Yes
WPR	Water Pollution Act licences requiring review	No
FOR	Forestry guidelines and regulations	Yes
CH1	Chanelisation measures	No
CH2	Chanelisation investigations	No
OG	Overgrazing measures	No
HQW	Protect high quality waters	No

## Measures

Measures are necessary to ensure that we meet the objectives set out in the previous page of this report. Many measures are already provided for in national legislation and must be implemented. Other measures have been recently introduced or are under preparation. A range of additional potential measures are also being considered but require further development. Any agreed additional measures can be introduced through the update of Water Management Unit Action Plans during the implementation process.

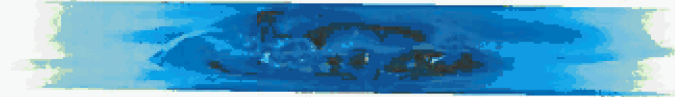
You can read more about Basic Measures in 'River Basin Planning Guidance' and in other documents in our RBMP Document Library at [www.wfdireland.ie](http://www.wfdireland.ie).

*For inspection purposes only.  
Consent of copyright owner required for any other use.*

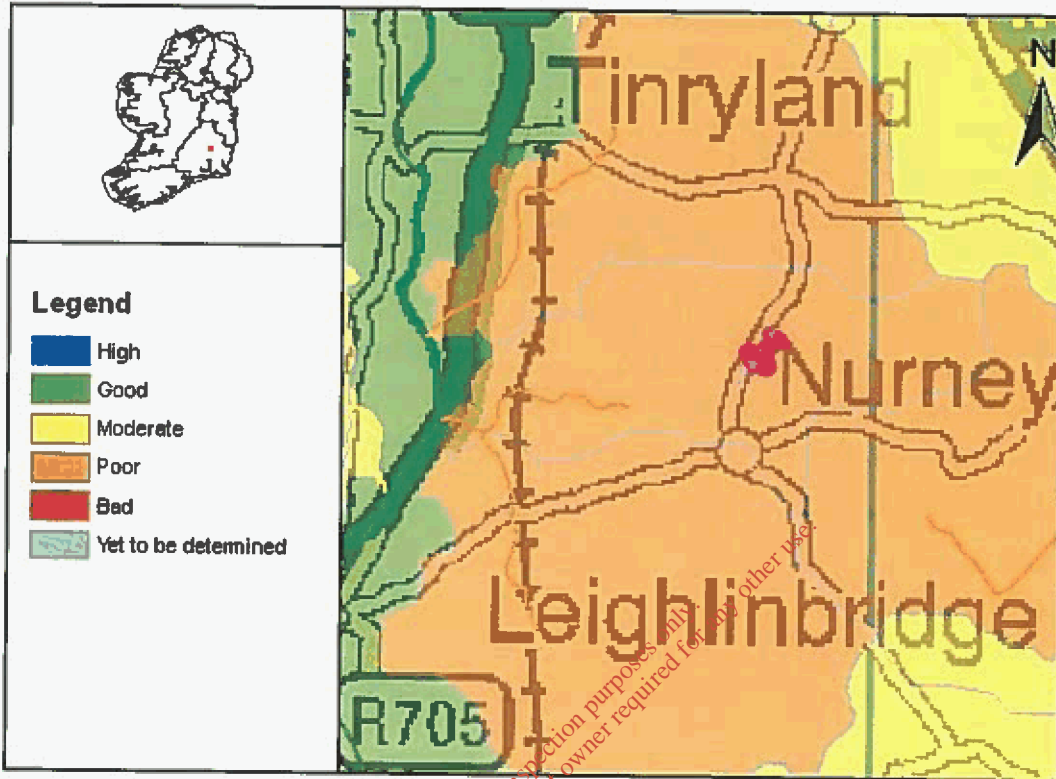
Date Reported to Europe: July 2010

Date Report Created 20/04/2012

For inspection purposes only.  
Consent of copyright owner required for any other use.



**Full Report for Waterbody Garryhundon, Trib of Barrow**



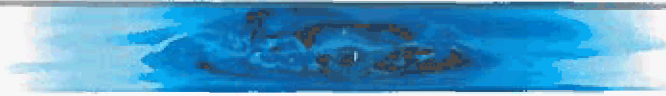
River Basin Management Plans (RBMPs) have been published for all River Basin Districts in Ireland in accordance with the requirements of the Water Framework Directive. The WaterMaps viewer is an integral part of the River Basin Management Plan and provides access to information at individual waterbody level and at Water Management Unit level for all the River Basin Districts in Ireland.

The following report provides summary plan information about the selected waterbody (indicated by the pin in the map above) relating to its status, risks, objectives, and measures proposed to retain status where this is adequate, or improve it where necessary. Waterbodies can relate to surface waters (these include rivers, lakes, estuaries [transitional waters], and coastal waters), or to groundwaters. Other relevant information not included in this report can be viewed using the WaterMaps viewer, including areas listed in the Register of Protected Areas.

You will find brief notes at the bottom of some of the individual report sheets that will help you in interpreting the information presented. More detailed information can be obtained in relation to all aspects of the RBMPs at [www.wfdireland.ie](http://www.wfdireland.ie).

Date Reported to Europe: July 2010

Date Report Created 20/04/2012



**Summary Information:**

**Water Management Unit:** IE\_SE\_BarrowMain  
**WaterBody Category:** River Waterbody  
**WaterBody Name:** Garryhundon, Trib of Barrow  
**WaterBody Code:** IE\_SE\_14\_1102  
**Overall Status:** Poor  
**Overall Objective:** Restore\_2021  
**Overall Risk:** 1b Probably At Risk  
**Heavily Modified:** No



Report data based upon final RBMP, 2009-2015.

The information provided above is a summary of the principal findings related to the selected waterbody. Further details and explanation of individual elements of the report are outlined in the following pages.

*For inspection purposes only.  
Consent of copyright owner required for any other use.*

Date Reported to Europe: July 2010

Date Report Created 20/04/2012



**Status Report**

**Water Management Unit:** IE\_SE\_BarrowMain  
**WaterBody Category:** River Waterbody  
**WaterBody Name:** Garryhundon, Trib of Barrow  
**WaterBody Code:** IE\_SE\_14\_1102  
**Overall Status Result:** **Poor**  
**Heavily Modified:** No



	<b>Status Element Description</b>	<b>Result</b>
<b>Status information</b>		
Q	Macroinvertebrate status	N/A
PC	General physico-chemical status	N/A
FPQ	Freshwater Pearl Mussel / Macroinvertebrate status	N/A
DIA	Diatoms status	N/A
HYM	Hydromorphology status	N/A
FIS	Fish status	N/A
SP	Specific Pollutants status (SP)	N/A
ES	Overall ecological status	<b>Poor</b>
CS	Overall chemical status (PAS)	n/a
EXT	Extrapolated status	YES
MON	Monitored water body	NO
DON	Donor water bodies	SE_14_951

For inspection purposes only. Consent of copyright owner required for any other use.

n/a - not assessed

**Status**

By 'Status' we mean the condition of the water in the waterbody. It is defined by its chemical status and its ecological status, whichever is worse. Waters are ranked in one of 5 status classes: High, Good, Moderate, Poor, Bad. However, not all waterbodies have been monitored, and in such cases the status of a similar nearby waterbody has been used (extrapolated) to assign status. If this has been done the first line of the status report shows the code of the waterbody used to extrapolate.

You can read more about status and how it is measured in our RBMP Document Library at [www.wfdireland.ie](http://www.wfdireland.ie) (Directory 15 Status).

Date Reported to Europe: July 2010

Date Report Created 20/04/2012



**Risk Report**

**Water Management Unit:** IE\_SE\_BarrowMain  
**WaterBody Category:** River Waterbody  
**WaterBody Name:** Garryhondon, Trib of Barrow  
**WaterBody Code:** IE\_SE\_14\_1102  
**Overall Risk Result:** **1b** Probably At Risk  
**Heavily Modified:** No



<b>Risk Test Description</b>		<b>Risk</b>
<b>Diffuse Risk Sources</b>		
RD1	EPA diffuse model (2008)	<b>1a</b> At Risk
RD2a	Road Wash - Soluble Copper	2b Not At Risk
RD2b	Road Wash - Total Zinc	2b Not At Risk
RD2c	Road Wash - Total Hydrocarbons	2b Not At Risk
RD3	Railways	2b Not At Risk
RD4a	Forestry - Acidification (2008)	2b Not At Risk
RD4b	Forestry - Suspended Solids (2008)	2b Not At Risk
RD4c	Forestry - Eutrophication (2008)	2a Probably Not At Risk
RD5	Overall Unsewered (2008)	2b Not At Risk
RD5a	Unsewered Areas - Pathogens (2008)	2a Probably Not At Risk
RD5b	Unsewered Phosphorus (2008)	2b Not At Risk
RD6a	Arable	2a Probably Not At Risk
RD6b	Sheep Dip	2b Not At Risk
RD6c	Forestry - Dangerous Substances	2b Not At Risk
RDO	Diffuse Overall -Worst Case (2008)	<b>1a</b> At Risk
<b>Hydrology</b>		
RHY1	Water balance - Abstraction	2b Not At Risk
<b>Morphological Risk Sources</b>		
RM1	Channelisation (2008)	2b Not At Risk
RM2	Embankments (2008)	2b Not At Risk
RM3	Impoundments	2b Not At Risk
RM4	Water Regulation	2b Not At Risk
RM5	Intensive Landuse	N/A
RMO	Morphology Overall - Worst Case (2008)	2b Not At Risk
<b>Overall Risk</b>		
RA	Rivers Overall - Worst Case (2008)	<b>1b</b> Probably At Risk

Consent of copyright owner required for any other use.  
For inspection purposes only.

Date Reported to Europe: July 2010

Date Report Created 20/04/2012





Point Risk Sources		
RP1	WWTPs (2008)	1a At Risk
RP2	CSOs	2b Not At Risk
RP3	IPPCs (2008)	2b Not At Risk
RP4	Section 4s (2008)	2b Not At Risk
RP5	WTPs/Mines/Quarries/Landfills	N/A
RPO	Overall Risk from Point Sources - Worst Case (2008)	1a At Risk
<b>Q Value</b>		
Q	EPA Q rating and Margaritifera Assessment	N/A
<b>Q/RDI or Point/Diffuse</b>		
QPD	Q class/EPA Diffuse Model or worst case of Point and Diffuse (2008)	1b Probably At Risk
<b>Rivers Direct Impacts</b>		
RDI1	Rivers Direct Impacts - Dangerous Substances	N/A

**Risk**

By 'risk' we mean the risk that a waterbody will not achieve good ecological or good chemical status/potential at least by 2015. To examine risk the various pressures acting on the waterbody were identified along with any evidence of impact on water status. Depending on the extent of the pressure and its potential for impact, and the amount of information available, the risk to the water body was placed in one of four categories: 1a at risk; 1b probably at risk; 2a probably not at risk; 2b not at risk. Note that '2008' after the risk category means that the risk assessment was revised in 2008. All other risks were determined as part of an earlier risk assessment in 2005.

You can read more about risk assessment in our 'WFD Risk Assessment Update' document in the RBMP document library, and other documents at [www.wfdireland.ie](http://www.wfdireland.ie) (Directory 31 Risk Assessments).

For inspection purposes only. Consent of copyright owner required for other use.

Date Reported to Europe: July 2010

Date Report Created 20/04/2012



**Objectives Report**

**Water Management Unit:** IE\_SE\_BarrowMain  
**WaterBody Category:** River Waterbody  
**WaterBody Name:** Garryhundon, Trib of Barrow  
**WaterBody Code:** IE\_SE\_14\_1102  
**Overall Objective:** Restore\_2021  
**Heavily Modified:** No



<b>Objectives Description</b>		<b>Result</b>
<b>Extended timescale information</b>		
E1	Extended timescales due to time requirements to upgrade WWTP discharges	2021
E2	Extended timescales due to delayed recovery of chemical pollution and chemical status failures	No Status
E3	Extended timescales due to delayed recovery following reduction in agricultural nutrient losses	No Status
E4	Extended timescales due to delayed recovery from physical modifications and physical damage	No Status
E5	Extended timescales due to delayed recovery following implementing forestry acidification measures	No Status
E6	Extended timescales due to physical recovery timescales at mines and contaminated sites	No Status
E7	Extended timescales due to delayed recovery of highly impacted sites	No Status
E8	Extended timescales due to delayed recovery following reduction in agricultural nutrient losses	No Status
E9	Extended timescales due to delayed recovery from nitrogen losses to estuaries	2021
E10	Extended timescales due to delayed recovery following reduction in agricultural nutrient losses	No Status
E11	Extended timescales due to delayed recovery from physical modifications and physical damage (overgrazing)	No Status
E12	Extended timescales due to delayed recovery from physical modifications and physical damage (channelisation)	No Status
E13	Extended timescales from Northern Ireland Environment Agency	No Status
EOV	Overall extended timescale - combination of all extended timescales fields	2021
E14	Extended timescales due to the presence of Freshwater Pearl Mussel populations	No Status
EX15	Extended timescales due to highly impacted sites	No Status

Date Reported to Europe: July 2010

Date Report Created 20/04/2012

# water matters

'Our Plan'



Objectives information		
OB1	Prevent deterioration objective	No Status
OB2	Restore at least good status objective	Restore_2021
OB3	Reduce chemical pollution objective	No Status
OB4	Protected areas objective	No Status
OB5	Northern Ireland Environment Agency objective	No Status
OBO	Overall objectives	Restore_2021

## Extended timescales

Extended timescales have been set for certain waters due to technical, economic, environmental or recovery constraints. Extended timescales are usually of one planning cycle (6 years, to 2021) but in some cases are two planning cycles (to 2027).

## Objectives

In general, we are required to ensure that our waters achieve at least good status/potential by 2015, and that their status does not deteriorate. Having identified the status of waters (this is given earlier in this report), the next stage is to set objectives for waters. Objectives consider waters that require protection from deterioration as well as waters that require restoration and the timescales needed for recovery. Four default objectives have been set initially:-

*Prevent Deterioration*

*Restore Good Status*

*Reduce Chemical Pollution*

*Achieve Protected Areas Objectives*

These objectives have been refined based on the measures available to achieve them, the latter's likely effectiveness, and consideration of cost-effective combinations of measures. Where it is considered necessary extended deadlines have been set for achieving objectives in 2021 or 2027.

For inspection purposes only.  
Consent of copyright owner required for any other use.

Date Reported to Europe: July 2010

Date Report Created 20/04/2012



**Measures Report**

**Water Management Unit:** IE\_SE\_BarrowMain  
**WaterBody Category:** River Waterbody  
**WaterBody Name:** Garryhundon, Trib of Barrow  
**WaterBody Code:** IE\_SE\_14\_1102  
**Heavily Modified:** No



	<b>Measures Description</b>	<b>Applicable</b>
BC	Total number of basic measures which apply to this waterbody	22
BW	Directive - Bathing Waters Directive	No
BIR	Directive - Birds Directive	No
HAB	Directive - Habitats Directive	No
DW	Directive - Drinking Waters Directive	No
MAE	Directive - Major Accidents and Emergencies Directive	Yes
EIA	Directive - Environmental Impact Assessment Directive	Yes
SS	Directive - Sewage Sludge Directive	Yes
UWT	Directive - Urban Waste Water Treatment Directive	Yes
PPP	Directive - Plant Protection Products Directive	Yes
NIT	Directive - Nitrates Directive	Yes
IPC	Directive - Integrated Pollution Prevention Control Directive	Yes
CR	Other Stipulated Measure - Cost recovery for water use	Yes
SUS	Other Stipulated Measure - Promotion of efficient and sustainable water use	Yes
DWS	Other Stipulated Measure - Protection of drinking water sources	Yes
ABS	Other Stipulated Measure - Control of abstraction and impoundment	Yes
POI	Other Stipulated Measure - Control of point source discharges	Yes
DIF	Other Stipulated Measure - Control of diffuse source discharges	Yes
PS	Other Stipulated Measure - Control of priority substances	Yes
MOD	Other Stipulated Measure - Controls on physical modifications to surface waters	Yes
OA	Other Stipulated Measure - Controls on other activities impacting on water status	Yes
AP	Other Stipulated Measure - Prevention or reduction of the impact of accidental pollution incidents	Yes
TP1	WSIP - Agglomerations with treatment plants requiring capital works	Yes
TP2	WSIP - Agglomerations with treatment plants requiring further investigation prior to capital works	Yes
TP3	WSIP - Agglomerations requiring the implementation of actions identified in Shellfish PRPs	No
TP4	WSIP - Agglomerations with treatment plants requiring improved operational performance	No
TP5	WSIP - Agglomerations requiring investigation of CSOs	No

For inspection purposes only. Content copyright owner required for any other use.

Date Reported to Europe: July 2010

Date Report Created 20/04/2012

# water matters

'Our Plan'



TP6	WSIP - Agglomerations where existing treatment capacity is currently adequate but predicted loadings would result in overloading	Yes
OTS	On-site waste water treatment systems	Yes
FPM	Freshwater Pearl Mussel sub-basin plan	No
SHE	Shellfish Pollution Reduction Plan	No
IPR	IPPC licences requiring review	No
WPR	Water Pollution Act licences requiring review	No
FOR	Forestry guidelines and regulations	Yes
CH1	Chanelisation measures	No
CH2	Chanelisation investigations	No
OG	Overgrazing measures	No
HQW	Protect high quality waters	No

## Measures

Measures are necessary to ensure that we meet the objectives set out in the previous page of this report. Many measures are already provided for in national legislation and must be implemented. Other measures have been recently introduced or are under preparation. A range of additional potential measures are also being considered but require further development. Any agreed additional measures can be introduced through the update of Water Management Unit Action Plans during the implementation process.

You can read more about Basic Measures in 'River Basin Planning Guidance' and in other documents in our RBMP Document Library at [www.wfdireland.ie](http://www.wfdireland.ie).

For inspection purposes only.  
Consent of copyright owner required for any other use.

Date Reported to Europe: July 2010

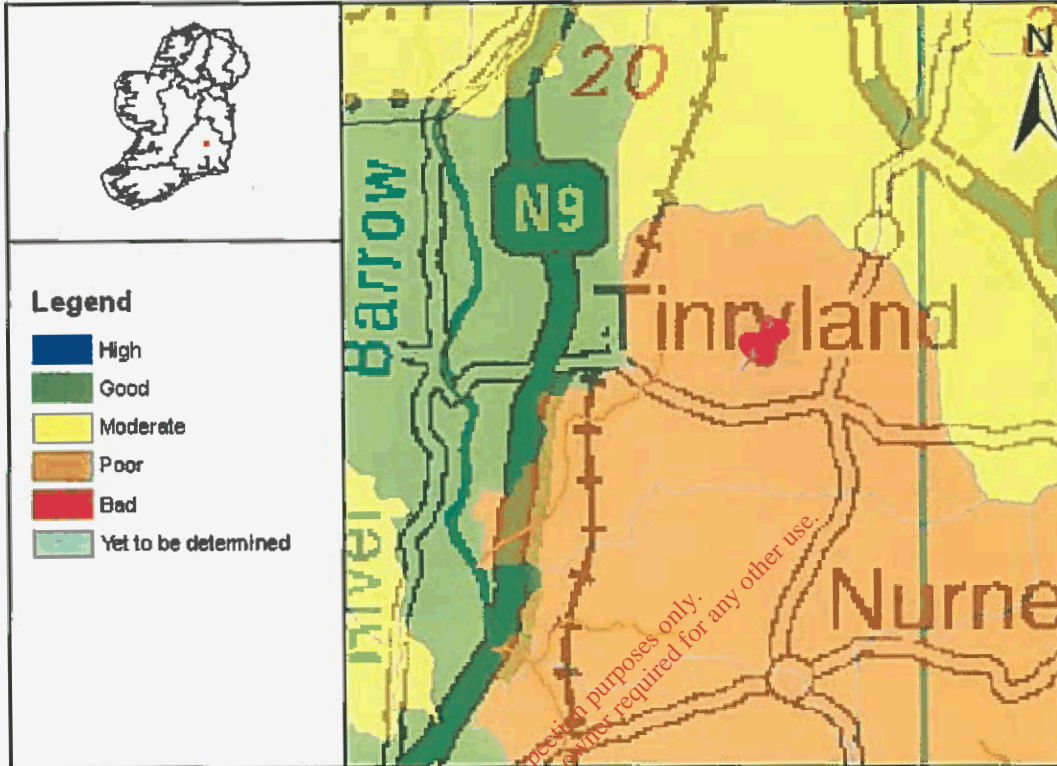
Date Report Created 20/04/2012

---

For inspection purposes only.  
Consent of copyright owner required for any other use.



**Full Report for Waterbody Clonmelsh, Trib of Barrow**



River Basin Management Plans (RBMPs) have been published for all River Basin Districts in Ireland in accordance with the requirements of the Water Framework Directive. The WaterMaps viewer is an integral part of the River Basin Management Plan and provides access to information at individual waterbody level and at Water Management Unit level for all the River Basin Districts in Ireland.

The following report provides summary plan information about the selected waterbody (indicated by the pin in the map above) relating to its status, risks, objectives, and measures proposed to retain status where this is adequate, or improve it where necessary. Waterbodies can relate to surface waters (these include rivers, lakes, estuaries [transitional waters], and coastal waters), or to groundwaters. Other relevant information not included in this report can be viewed using the WaterMaps viewer, including areas listed in the Register of Protected Areas.

You will find brief notes at the bottom of some of the individual report sheets that will help you in interpreting the information presented. More detailed information can be obtained in relation to all aspects of the RBMPs at [www.wfdireland.ie](http://www.wfdireland.ie).

Date Reported to Europe: July 2010

Date Report Created 20/04/2012



**Summary Information:**

**Water Management Unit:** IE\_SE\_BarrowMain  
**WaterBody Category:** River Waterbody  
**WaterBody Name:** Clonmelsh, Trib of Barrow  
**WaterBody Code:** IE\_SE\_14\_1391  
**Overall Status:** Poor  
**Overall Objective:** Restore\_2021  
**Overall Risk:** 1b Probably At Risk  
**Heavily Modified:** No



Report data based upon final RBMP, 2009-2015.

The information provided above is a summary of the principal findings related to the selected waterbody. Further details and explanation of individual elements of the report are outlined in the following pages.

For inspection purposes only.  
Consent of copyright owner required for any other use.

Date Reported to Europe: July 2010

Date Report Created 20/04/2012





<b>Status Report</b>	
<b>Water Management Unit:</b>	IE_SE_BarrowMain
<b>WaterBody Category:</b>	River Waterbody
<b>WaterBody Name:</b>	Clonmelsh, Trib of Barrow
<b>WaterBody Code:</b>	IE_SE_14_1391
<b>Overall Status Result:</b>	Poor
<b>Heavily Modified:</b>	No



	<b>Status Element Description</b>	<b>Result</b>
<b>Status information</b>		
Q	Macroinvertebrate status	N/A
PC	General physico-chemical status	N/A
FPQ	Freshwater Pearl Mussel / Macroinvertebrate status	N/A
DIA	Diatoms status	N/A
HYM	Hydromorphology status	N/A
FIS	Fish status	N/A
SP	Specific Pollutants status (SP)	N/A
ES	Overall ecological status	Poor
CS	Overall chemical status (PAS)	n/a
EXT	Extrapolated status	YES
MON	Monitored water body	NO
DON	Donor water bodies	SE_14_951

For inspection purposes only.  
Consent of copyright owner required for any other use.

n/a - not assessed

**Status**

By 'Status' we mean the condition of the water in the waterbody. It is defined by its chemical status and its ecological status, whichever is worse. Waters are ranked in one of 5 status classes: High, Good, Moderate, Poor, Bad. However, not all waterbodies have been monitored, and in such cases the status of a similar nearby waterbody has been used (extrapolated) to assign status. If this has been done the first line of the status report shows the code of the waterbody used to extrapolate.

You can read more about status and how it is measured in our RBMP Document Library at [www.wfdireland.ie](http://www.wfdireland.ie) (Directory 15 Status).

Date Reported to Europe: July 2010

Date Report Created 20/04/2012



**Risk Report**

**Water Management Unit:** IE\_SE\_BarrowMain  
**WaterBody Category:** River Waterbody  
**WaterBody Name:** Clonmelsh, Trib of Barrow  
**WaterBody Code:** IE\_SE\_14\_1391  
**Overall Risk Result:** 1b Probably At Risk  
**Heavily Modified:** No



<b>Risk Test Description</b>		<b>Risk</b>	
<b>Diffuse Risk Sources</b>			
RD1	EPA diffuse model (2008)	<span style="background-color: #002060; color: white; padding: 2px;">1a</span>	At Risk
RD2a	Road Wash - Soluble Copper	<span style="background-color: #808080; color: white; padding: 2px;">2b</span>	Not At Risk
RD2b	Road Wash - Total Zinc	<span style="background-color: #808080; color: white; padding: 2px;">2b</span>	Not At Risk
RD2c	Road Wash - Total Hydrocarbons	<span style="background-color: #808080; color: white; padding: 2px;">2b</span>	Not At Risk
RD3	Railways	<span style="background-color: #808080; color: white; padding: 2px;">2b</span>	Not At Risk
RD4a	Forestry - Acidification (2008)	<span style="background-color: #808080; color: white; padding: 2px;">2b</span>	Not At Risk
RD4b	Forestry - Suspended Solids (2008)	<span style="background-color: #808080; color: white; padding: 2px;">2b</span>	Not At Risk
RD4c	Forestry - Eutrophication (2008)	<span style="background-color: #4a4a8a; color: white; padding: 2px;">2a</span>	Probably Not At Risk
RD5	Overall Unsewered (2008)	<span style="background-color: #808080; color: white; padding: 2px;">2b</span>	Not At Risk
RD5a	Unsewered Areas - Pathogens (2008)	<span style="background-color: #4a4a8a; color: white; padding: 2px;">2a</span>	Probably Not At Risk
RD5b	Unsewered Phosphorus (2008)	<span style="background-color: #808080; color: white; padding: 2px;">2b</span>	Not At Risk
RD6a	Arable	<span style="background-color: #4a4a8a; color: white; padding: 2px;">2a</span>	Probably Not At Risk
RD6b	Sheep Dip	<span style="background-color: #808080; color: white; padding: 2px;">2b</span>	Not At Risk
RD6c	Forestry - Dangerous Substances	<span style="background-color: #808080; color: white; padding: 2px;">2b</span>	Not At Risk
RDO	Diffuse Overall -Worst Case (2008)	<span style="background-color: #002060; color: white; padding: 2px;">1a</span>	At Risk
<b>Hydrology</b>			
RHY1	Water balance - Abstraction	<span style="background-color: #808080; color: white; padding: 2px;">2b</span>	Not At Risk
<b>Morphological Risk Sources</b>			
RM1	Channellisation (2008)	<span style="background-color: #808080; color: white; padding: 2px;">2b</span>	Not At Risk
RM2	Embankments (2008)	<span style="background-color: #808080; color: white; padding: 2px;">2b</span>	Not At Risk
RM3	Impoundments	<span style="background-color: #808080; color: white; padding: 2px;">2b</span>	Not At Risk
RM4	Water Regulation	<span style="background-color: #808080; color: white; padding: 2px;">2b</span>	Not At Risk
RM5	Intensive Landuse		N/A
RMO	Morphology Overall - Worst Case (2008)	<span style="background-color: #808080; color: white; padding: 2px;">2b</span>	Not At Risk
<b>Overall Risk</b>			
RA	Rivers Overall - Worst Case (2008)	<span style="background-color: #4a4a8a; color: white; padding: 2px;">1b</span>	Probably At Risk

For inspection purposes only. Consent of copyright owner required for any other use.

Date Reported to Europe: July 2010

Date Report Created 20/04/2012



Point Risk Sources		
RP1	WWTPs (2008)	2b Not At Risk
RP2	CSOs	2b Not At Risk
RP3	IPPCs (2008)	2b Not At Risk
RP4	Section 4s (2008)	2b Not At Risk
RP5	WTPs/Mines/Quarries/Landfills	N/A
RPO	Overall Risk from Point Sources - Worst Case (2008)	2b Not At Risk
Q Value		
Q	EPA Q rating and Margaritifera Assessment	N/A
Q/RDI or Point/Diffuse		
QPD	Q class/EPA Diffuse Model or worst case of Point and Diffuse (2008)	1b Probably At Risk
Rivers Direct Impacts		
RDI1	Rivers Direct Impacts - Dangerous Substances	N/A

**Risk**

By 'risk' we mean the risk that a waterbody will not achieve good ecological or good chemical status/potential at least by 2015. To examine risk the various pressures acting on the waterbody were identified along with any evidence of impact on water status. Depending on the extent of the pressure and its potential for impact, and the amount of information available, the risk to the water body was placed in one of four categories: 1a at risk; 1b probably at risk; 2a probably not at risk; 2b not at risk. Note that '2008' after the risk category means that the risk assessment was revised in 2008. All other risks were determined as part of an earlier risk assessment in 2005.

You can read more about risk assessment in our 'WFD Risk Assessment Update' document in the RBMP document library, and other documents at [www.wfdireland.ie](http://www.wfdireland.ie) (Directory 31 Risk Assessments).

For inspection purposes only. Consent of copyright owner required for all other uses.

Date Reported to Europe: July 2010

Date Report Created 20/04/2012



**Objectives Report**

**Water Management Unit:** IE\_SE\_BarrowMain  
**WaterBody Category:** River Waterbody  
**WaterBody Name:** Clonmelsh, Trib of Barrow  
**WaterBody Code:** IE\_SE\_14\_1391  
**Overall Objective:** Restore\_2021  
**Heavily Modified:** No



	<b>Objectives Description</b>	<b>Result</b>
	<b>Extended timescale information</b>	
E1	Extended timescales due to time requirements to upgrade WWTP discharges	No Status
E2	Extended timescales due to delayed recovery of chemical pollution and chemical status failures	No Status
E3	Extended timescales due to delayed recovery following reduction in agricultural nutrient losses	No Status
E4	Extended timescales due to delayed recovery from physical modifications and physical damage	No Status
E5	Extended timescales due to delayed recovery following implementing forestry acidification measures	No Status
E6	Extended timescales due to physical recovery timescales at mines and contaminated sites	No Status
E7	Extended timescales due to delayed recovery of highly impacted sites	No Status
E8	Extended timescales due to delayed recovery following reduction in agricultural nutrient losses	No Status
E9	Extended timescales due to delayed recovery from nitrogen losses to estuaries	2021
E10	Extended timescales due to delayed recovery following reduction in agricultural nutrient losses	No Status
E11	Extended timescales due to delayed recovery from physical modifications and physical damage (overgrazing)	No Status
E12	Extended timescales due to delayed recovery from physical modifications and physical damage (channellisation)	No Status
E13	Extended timescales from Northern Ireland Environment Agency	No Status
EOV	Overall extended timescale - combination of all extended timescales fields	2021
E14	Extended timescales due to the presence of Freshwater Pearl Mussel populations	No Status
EX15	Extended timescales due to highly impacted sites	No Status

Date Reported to Europe: July 2010

Date Report Created 20/04/2012



Objectives information		
OB1	Prevent deterioration objective	No Status
OB2	Restore at least good status objective	Restore_2021
OB3	Reduce chemical pollution objective	No Status
OB4	Protected areas objective	No Status
OB5	Northern Ireland Environment Agency objective	No Status
OBO	Overall objectives	Restore_2021

**Extended timescales**

Extended timescales have been set for certain waters due to technical, economic, environmental or recovery constraints. Extended timescales are usually of one planning cycle (6 years, to 2021) but in some cases are two planning cycles (to 2027).

**Objectives**

In general, we are required to ensure that our waters achieve at least good status/potential by 2015, and that their status does not deteriorate. Having identified the status of waters (this is given earlier in this report), the next stage is to set objectives for waters. Objectives consider waters that require protection from deterioration as well as waters that require restoration and the timescales needed for recovery. Four default objectives have been set initially:-

*Prevent Deterioration*

*Restore Good Status*

*Reduce Chemical Pollution*

*Achieve Protected Areas Objectives*

These objectives have been refined based on the measures available to achieve them, the latter's likely effectiveness, and consideration of cost-effective combinations of measures. Where it is considered necessary extended deadlines have been set for achieving objectives in 2021 or 2027.

For inspection purposes only. Consent of copyright owner required for any other use.

Date Reported to Europe: July 2010

Date Report Created 20/04/2012



**Measures Report**

**Water Management Unit:** IE\_SE\_BarrowMain  
**WaterBody Category:** River Waterbody  
**WaterBody Name:** Clonmelsh, Trib of Barrow  
**WaterBody Code:** IE\_SE\_14\_1391  
**Heavily Modified:** No



	<b>Measures Description</b>	<b>Applicable</b>
BC	Total number of basic measures which apply to this waterbody	19
BW	Directive - Bathing Waters Directive	No
BIR	Directive - Birds Directive	No
HAB	Directive - Habitats Directive	No
DW	Directive - Drinking Waters Directive	No
MAE	Directive - Major Accidents and Emergencies Directive	Yes
EIA	Directive - Environmental Impact Assessment Directive	Yes
SS	Directive - Sewage Sludge Directive	Yes
UWT	Directive - Urban Waste Water Treatment Directive	Yes
PPP	Directive - Plant Protection Products Directive	Yes
NIT	Directive - Nitrates Directive	Yes
IPC	Directive - Integrated Pollution Prevention Control Directive	Yes
CR	Other Stipulated Measure - Cost recovery for water use	Yes
SUS	Other Stipulated Measure - Promotion of efficient and sustainable water use	Yes
DWS	Other Stipulated Measure - Protection of drinking water sources	Yes
ABS	Other Stipulated Measure - Control of abstraction and impoundment	Yes
POI	Other Stipulated Measure - Control of point source discharges	Yes
DIF	Other Stipulated Measure - Control of diffuse source discharges	Yes
PS	Other Stipulated Measure - Control of priority substances	Yes
MOD	Other Stipulated Measure - Controls on physical modifications to surface waters	Yes
OA	Other Stipulated Measure - Controls on other activities impacting on water status	Yes
AP	Other Stipulated Measure - Prevention or reduction of the impact of accidental pollution incidents	Yes
TP1	WSIP - Agglomerations with treatment plants requiring capital works	No
TP2	WSIP - Agglomerations with treatment plants requiring further investigation prior to capital works	No
TP3	WSIP - Agglomerations requiring the implementation of actions identified in Shellfish PRPs	No
TP4	WSIP - Agglomerations with treatment plants requiring improved operational performance	No
TP5	WSIP - Agglomerations requiring investigation of CSOs	No

Content of copyright owner required for any other use.

Date Reported to Europe: July 2010

Date Report Created 20/04/2012



TP6	WSIP - Agglomerations where existing treatment capacity is currently adequate but predicted loadings would result in overloading	No
OTS	On-site waste water treatment systems	Yes
FPM	Freshwater Pearl Mussel sub-basin plan	No
SHE	Shellfish Pollution Reduction Plan	No
IPR	IPPC licences requiring review	No
WPR	Water Pollution Act licences requiring review	No
FOR	Forestry guidelines and regulations	Yes
CH1	Chanelisation measures	No
CH2	Chanelisation investigations	No
OG	Overgrazing measures	No
HQW	Protect high quality waters	No

**Measures**

Measures are necessary to ensure that we meet the objectives set out in the previous page of this report. Many measures are already provided for in national legislation and must be implemented. Other measures have been recently introduced or are under preparation. A range of additional potential measures are also being considered but require further development. Any agreed additional measures can be introduced through the update of Water Management Unit Action Plans during the implementation process.

You can read more about Basic Measures in 'River Basin Planning Guidance' and in other documents in our RBMP Document Library at [www.wfdireland.ie](http://www.wfdireland.ie).

For inspection purposes only.  
Consent of copyright owner required for any other use.

Date Reported to Europe: July 2010

Date Report Created 20/04/2012

For inspection purposes only.  
Consent of copyright owner required for any other use.