

Unit 15  
Melbourne Business Park  
Model Farm Road  
Cork



E:info@ocallaghanmoran.com  
[www.ocallaghanmoran.com](http://www.ocallaghanmoran.com)  
T: 021 434 5366

**ANNUAL ENVIRONMENTAL REPORT**  
**STARRUS ECO HOLDINGS LIMITED**  
**MATERIALS RECOVERY FACILITY**  
**DOCK ROAD, LIMERICK**  
**LICENCE NO. W0082-03**  
**JANUARY 2017 – DECEMBER 2017**

**Prepared For: -**

Starrus Eco Holdings Ltd. (SEHL),  
Fassaroe,  
Bray,  
Co. Wicklow

**Prepared By: -**

O' Callaghan Moran & Associates,  
Unit 15 Melbourne Business Park,  
Model Farm Road,  
Cork.

**5<sup>th</sup> April 2018**

Project	Annual Environmental Report 2017			
Client	Starrus Eco Holdings Ltd. W0082-03			
Report No	Date	Status	Prepared By	Reviewed By
0480603	05/04/2018	Draft	Martina Gleeson PhD	Jim O'Callaghan MSc
	05/04/2018	Final	Martina Gleeson PhD	Jim O'Callaghan MSc

---

# TABLE OF CONTENTS

---

	<u>PAGE</u>
<b>1. INTRODUCTION.....</b>	<b>2</b>
<b>2. SITE DESCRIPTION.....</b>	<b>3</b>
2.1 SITE LOCATION AND LAYOUT .....	3
2.2 WASTE MANAGEMENT ACTIVITIES .....	3
2.2.1 Waste Types & Processes.....	3
2.2.2 Plant List.....	5
<b>3. EMISSION MONITORING .....</b>	<b>6</b>
3.1 GROUNDWATER MONITORING.....	6
3.2 NOISE MONITORING .....	8
3.3 DUST MONITORING .....	13
<b>4. SITE DEVELOPMENT WORKS .....</b>	<b>15</b>
4.1 SPECIFIED ENGINEERING WORKS (SEW) .....	15
4.2 SUMMARY OF RESOURCE & ENERGY CONSUMPTION .....	15
4.3 BUND INTEGRITY & PIPELINE TESTING .....	15
<b>5. WASTE RECEIVED AND CONSIGNED FROM THE FACILITY .....</b>	<b>16</b>
<b>6. ENVIRONMENTAL INCIDENTS AND COMPLAINTS .....</b>	<b>19</b>
6.1 INCIDENTS .....	19
6.2 REGISTER OF COMPLAINTS.....	19
<b>7. ENVIRONMENTAL DEVELOPMENT &amp; CONTROL.....</b>	<b>20</b>
7.1 ENVIRONMENTAL MANAGEMENT PROGRAMME REPORT .....	20
7.1.1 Site Management Structure .....	20
7.1.2 Staff Training.....	21
7.2 ENVIRONMENTAL MANAGEMENT PROGRAMME .....	21
7.2.1 Schedule of Objectives 2017 .....	21
7.2.2 Schedule of Objectives 2018 .....	21
7.3 COMMUNICATIONS PROGRAMME .....	21
7.4 REPORT FINANCIAL PROVISION.....	21
7.5 NUISANCE CONTROLS .....	24
<b>8. OTHER REPORTS.....</b>	<b>25</b>
8.1 EUROPEAN POLLUTANT RELEASE AND TRANSFER REGISTER REGULATION .....	25
<b>APPENDIX 1</b> -	European Pollutant Release and Transfer Register
<b>APPENDIX 2</b>	Procedures Index

---

# 1. INTRODUCTION

---

This is the 2017 Annual Environmental Report (AER) for the Starrus Eco Holdings Ltd. (SEHL), Materials Recovery Facility (MRF) at Ballykeefe, Dock Road, Limerick and covers the reporting period January to December 2017. A revised Industrial Emission (IED) Licence (W0082-03) for the installation was issued on the 15<sup>th</sup> May 2015.

The content is based on Schedule F of the Licence and the report format follows guidelines set in the “Guidance Note for Annual Environmental Report” issued by the Environmental Protection Agency (Agency)<sup>1</sup>. Cognisance was also taken of the Agency AER Draft Guidance Document and Draft AER Templates issued in January 2013<sup>2</sup>.

---

<sup>1</sup> EPA (Environmental Protection Agency) 1999 Waste Licensing – Draft Guidance on Environmental Management Systems and Reporting to the Agency

<sup>2</sup> EPA (Environmental Protection Agency) 2012 Draft AER Guidance Document

---

## 2. SITE DESCRIPTION

---

### 2.1 Site Location and Layout

The installation is located on the Dock Road in Limerick, in an area dominated by industrial and commercial buildings and activities. It is adjacent to the N69, on the main Limerick to Foynes road.

There are two adjoining buildings, comprising a recycling area and transfer area. There is also a separate office building and adjoining vehicle and plant maintenance workshop located close to the site entrance. The open yard areas are paved and are used for external waste storage bays (C&D, glass, metals and timber), storage of wrapped baled waste, skip storage, truck parking and a vehicle washing area (not in use during the reporting period). The entire site, including the floors of the transfer buildings and the open yards, are paved with concrete.

### 2.2 Waste Management Activities

The Licence allows SEHL to accept and process 130,000 tonnes of commercial and industrial, construction and demolition and municipal wastes.

#### 2.2.1 Waste Types & Processes

The installation is authorised to accept the following waste types and quantities, as specified in Schedule A of the Licence: -

- Municipal waste including biodegradable kitchen and canteen waste
- Packaging waste
- Commercial waste
- Industrial waste
- Construction and demolition waste
- Waste derived from the treatment of waste
- Street sweepings
- Metal waste

No hazardous wastes or liquid waste are accepted. The maximum amount of each waste type accepted, may be altered with the prior agreement of the Agency, as long as the total maximum tonnage is not exceeded.

The key processes carried out at the installation include: -

- Segregation of recyclable materials (paper, cardboards, plastic, wood, metals, glass);
- Bulking up of Municipal Solid Waste;
- Segregation and bulking of C&D waste;
- Transfer of recovered and residual materials to appropriately licensed recycling, recovery and disposal outlets;
- Baling and wrapping of waste material (20 03 01);
- Collection of waste at the Civic Amenity Area.

#### *Commercial and Industrial Waste*

Both mixed and segregated commercial waste is collected from commercial sources. Commercial waste rich in recyclables (paper, cardboard, glass, metal, green waste and wood) is delivered by both permitted third party hauliers and by SEHL vehicles. Plastic, card and paper are baled and stored prior to transfer to a suitable permitted/licensed off-site recycling outlet. Timber recovered from the mixed C&I waste stream and that delivered to the installation as a single waste stream is bulked on-site prior to onward transfer to authorised facility. Biodegradable wastes suitable for composting are sent to an offsite composting facility. The remaining non-recyclable material is bulked and sent to appropriate licensed facilities.

#### *C&D Waste*

Waste loads include mixed construction and demolition wastes and soil and stone. The material arrives in skips of varying sizes. The loads are inspected, with any plasterboard removed and placed in a dedicated skip located inside the building, and the remainder off loaded into an external C&D bay. The majority of the incoming waste is recovered and sent off-site either for re-use or recovery. The non-recyclable materials are transferred to a licensed landfill.

#### *Municipal Waste*

All mixed MSW is handled inside the building. The incoming waste is deposited on the floor of the building and is then compacted, for removal and disposal at an approved residual landfill facility or re-directed to the onsite baler for the production of wrapped bales of waste material for export to approved recovery facilities.

### 2.2.2 Plant List

A list of the plant in use at the installation is given in Table 2.1. The plant provides 100% duty and 50% standby capacity.

**Table 2.1** Existing Plant

<b>No.</b>	<b>Plant</b>	<b>Operational Capacity tpd</b>	<b>Standby Capacity tpd</b>
1	360° case Excavator	300	200
1	Volvo Loading Shovel	500	350
1	Cardboard baler	100	75
1	Waste Baler	350	200
1	M+J shredder	350	200
1	Doppstadt trommel	350	200
1	JCB tele-porter	350	200
1	360 Cat Elevated	300	200
1	3 ton forklift		
1	Jungenheinrich forklift	100	75

---

### **3. EMISSION MONITORING**

---

The monitoring specified in the licence includes surface water, wastewater, groundwater, dust and noise monitoring. The monitoring locations are shown on Figure 3.1.

In September 2016, the Agency requested that all surface water and wastewater discharges from the installation cease. In October 2016, SEHL ceased to discharge the surface water and wastewater and began to store the water in a collection tank prior to collection and disposal at the nearby Bunlicky WWTP. Therefore no monitoring of the surface water or wastewater discharge was carried out in 2017.

The monitoring results for dust, noise and groundwater are submitted to the Agency upon completion and an overview of the monitoring completed in 2017 is presented in this Section.

#### **3.1 Groundwater Monitoring**

Groundwater monitoring is carried out bi-annually at three wells, GWM1, GWM2 and GWM3. GWM1 is close to the entrance to the dry recyclables recycling building, GWM2 is at the northern site boundary and is downgradient of site activities. GWM3 is outside the operational area and is upgradient of site activities.

There are no ELVs or Trigger Levels set in the Licence. For interpretation purposes the results had, up to Q2 2011, been compared to the Interim Guideline Values (IGV) for groundwater published by the Agency. Since then, the results are also compared to the Threshold Values for groundwater (GTV) quality introduced by the European Communities Environmental Objectives (Groundwater) Regulations 2010 S.I. No 9 of 2010.

The IGV levels represent typical background or unpolluted conditions, however levels higher than the IGV can occur naturally, depending on the local geological and hydrogeological conditions. While the Threshold Values are more appropriate for large scale abstraction wells used for potable supply, they can be used to assess the significance of contamination where present in groundwater. Because not all parameters monitored have been assigned Threshold Values, the relevant IGV continue to be used for comparative purposes.

In October 2013, OCM on behalf of SEHL submitted proposed groundwater trigger levels for the Agency's approval. Although the proposed trigger levels have not yet been approved they are included for information purposes in Table 3.10. The monitoring results are summarised in Tables 3.11 and 3.12.



The results are generally consistent with those of previous monitoring events which have found elevated levels of ammoniacal nitrogen at each location. Although the ammoniacal nitrogen levels exceeded the GTV levels the proposed trigger levels were not exceeded. In October, the GTV for Chloride was exceeded at GWM2, the reason for this exceedance is unknown, but will be investigated further in 2018.

Although hydrocarbons occurred intermittently at GWM1 and GWM3 in 2013 none have been recorded since 2014. The reason for the low levels of hydrocarbons detected at GWM1 and GWM3 in 2013 is unknown. There have been no known incidents at the installation likely to have caused contamination.

**Table 3.10** Proposed Trigger Levels

Borehole	Electrical Conductivity Proposed Trigger Level (mS/cm)	Ammoniacal Nitrogen Proposed Trigger Level (mg/l)
GWM1	1.140	11.89
GWM2	1.790	10.31
GWM3	1.120	1.87

**Table 3.11-** Groundwater Monitoring Results – June 2017

Parameter	Units	GWM1	GWM2	GWM3	TV	IGV
Water Level**	mBGL	2.48	n/r	1.32	-	-
Temperature**	°C	13.3	14.2	13.9	-	25
pH	pH Units	7.24	7.23	7.30	-	6.5 - 9.5
Conductivity	mS/cm	1.349	1.218	0.827	0.8 - 1.875	-
COD	mg/l	30	26	22	-	-
BOD	mg/l	14	6	4	-	-
Total Suspended Solids	mg/l	416	210	51	-	-
Total Ammonia (as NH <sub>3</sub> )	mg/l	10.26	6.63	2.87	0.65 - 0.175	-
Total Nitrogen	mg/l	8.5	6.9	4.1	-	NAC
Mineral Oils	mg/l	<0.01	<0.01	<0.01	-	0.01
Sulphate	mg/l	2.2	32.6	85.3	187.5	-
Total Phosphorous	mg/l	911	688	166	-	-
Nitrate (as NO <sub>3</sub> )	mg/l	<0.2	<0.2	<0.2	37.5	-
Nitrite (as NO <sub>2</sub> )	mg/l	<0.02	0.06	<0.02	0.375	-
Fats, Oils & Greases	mg/l	<0.01	<0.01	<0.01	-	-
Diesel Range Organics	mg/l	<0.01	<0.01	<0.01	-	0.01
Aliphatic Hydrocarbons	mg/l	<0.01	<0.01	<0.01	-	0.01
Undecane	mg/l	<0.01	<0.01	<0.01	-	-
Chloride	mg/l	151.4	141.6	29.0	24 - 187.5	-
Fluoride	mg/l	<0.3	0.4	0.5	-	1

\*\* Field Readings

n/r – Not Recorded (well head damaged – not able to obtain water level)

**Table 3.12 - Groundwater Monitoring Results – October 2017**

Parameter	Units	GWM1	GWM2	GWM3	TV	IGV
Water Level**	mBGL	1.99	2.80	1.37	-	-
Temperature**	°C	13.0	12.8	12.5	-	25
pH	pH Units	7.07	7.14	7.33	-	6.5 - 9.5
COD	mg/l	24	23	10	-	-
BOD	mg/l	13	14	2	-	-
Total Suspended Solids	mg/l	133	88	217	-	-
Total Ammonia (as NH <sub>3</sub> )	mg/l	9.54	8.89	1.56	0.65 - 0.175	-
Total Nitrogen	mg/l	9.1	8.7	3.1	-	NAC
Mineral Oils	mg/l	<0.01	<0.01	<0.01	-	0.01
Sulphate	mg/l	<0.5	5.7	44.5	187.5	-
Total Phosphorous	mg/l	599	653	77	-	-
Nitrate (as NO <sub>3</sub> )	mg/l	<0.2	<0.2	<0.2	37.5	-
Nitrite (as NO <sub>2</sub> )	mg/l	<0.02	<0.02	<0.02	0.375	-
Fats, Oils & Greases	mg/l	<0.01	<0.01	<0.01	-	-
Diesel Range Organics	mg/l	<0.01	<0.01	<0.01	-	0.01
Aliphatic Hydrocarbons	mg/l	<0.01	<0.01	<0.01	-	0.01
Undecane	mg/l	<0.01	<0.01	<0.01	-	-
Conductivity	mS/cm	1.196	1.462	0.839	0.8 - 1.875	-
Chloride	mg/l	145.2	230.6	71.6	24 - 187.5	-
Fluoride	mg/l	<0.3	0.4	0.6	-	1

\*\* Field Readings

n/r – Not Recorded (well head damaged – not able to obtain water level)

### 3.2 Noise Monitoring

The annual noise survey was carried out on the 11<sup>th</sup> July 2017 at three on-site boundary monitoring (NI1 – NI3) locations and one location within the installation at the civic amenity site (CAS). The survey, which was conducted, confirmed that noise emissions fully complied with the licence conditions and that the installation is not impacting negatively on the nearest sensitive receptors. A summary of the noise results is in Table 3.13.

SEHL operations dominated the soundscape at all four stations throughout the daytime survey, and measured  $L_{Aeq\ 30\ min}$  levels (49-69 dB) were entirely representative of site emissions. A similar situation prevailed during the evening survey, and measured  $L_{Aeq\ 30\ min}$  levels (48-51 dB) were again representative of site emissions, apart from at the CAS station where a temporary break in operations resulted in a site contribution of 47 dB.  $L_{Aeq\ 30\ min}$  levels measured during the first night-time intervals at Ni3 and the CAS station (45 dB at both) were representative of the bale wrapping operation. A plant breakdown resulted in reduced  $L_{Aeq\ 30\ min}$  levels during all other night-time intervals.

Noise limits set out in the waste licence are considered applicable to Noise Sensitive Locations (NSLs). Brief daytime and night-time inspections undertaken in the vicinity of the nearest

NSLs during the survey indicated that SEH emissions were inaudible. It follows that facility emissions complied with specified limits, and thus complied with condition 4.3 of the licence.

**Table 3.13** Noise Monitoring Results 2017

Station	Date	Time	Wind vector	L <sub>Aeq 30 min</sub> dB	L <sub>AF10 30 min</sub> dB	L <sub>AF90 30 min</sub> dB	Specific L <sub>Aeq 30 min</sub> dB
Ni1 day 1/3	11.07.17	1304-1334	0	50	52	38	50
	<b>Facility:</b> Loader and truck activity in N end of main building almost continuously quite audible. Activity on yard also audible at low level. No local yard activity. <b>Extraneous:</b> Distant road traffic audible at low level during infrequent lulls in site emissions. Crow calls. <b>Specific L<sub>Aeq T</sub> determination:</b> Leq representative.						
Ni1 day 2/3	11.07.17	1409-1439	0	49	51	40	49
	<b>Facility:</b> As previous. <b>Extraneous:</b> As previous. <b>Specific L<sub>Aeq T</sub> determination:</b> As previous.						
Ni1 day 3/3	11.07.17	1532-1602	0	50	52	42	50
	<b>Facility:</b> As previous. <b>Extraneous:</b> As previous. <b>Specific L<sub>Aeq T</sub> determination:</b> As previous.						
Ni1 eve 1/1	11.07.17	2052-2122	0	48	46	37	48
	<b>Facility:</b> Grab, telescopic handler and bale wrapping plant quite audible continuously. <b>Extraneous:</b> Distant traffic slightly audible. Bird song/calls. <b>Specific L<sub>Aeq T</sub> determination:</b> Leq representative.						
Ni1 night 1/2	11/12.07.17	2341-0011	0	38	39	36	<36
	<b>Facility:</b> No emissions audible due to plant breakdown. <b>Extraneous:</b> Distant traffic and continuous emissions from blower or similar at premises to NW quite audible. <b>Specific L<sub>Aeq T</sub> determination:</b> No emissions, thus <L95.						
Ni1 night 2/2	11.07.17	0056-0126	0	35	36	32	<32
	<b>Facility:</b> Bale wrapping halted, and thus no emissions audible. <b>Extraneous:</b> As previous. <b>Specific L<sub>Aeq T</sub> determination:</b> As previous.						

Station	Date	Time	Wind vector	L <sub>Aeq 30</sub> min dB	L <sub>AF10 30</sub> min dB	L <sub>AF90 30</sub> min dB	Specific L <sub>Aeq 30</sub> min dB
Ni2 day 1/3	11.07.17	1256- 1326	0	62	61	41	62
	<b>Facility:</b> Truck and plant activity on yard and in building almost continuously clearly audible. <b>Extraneous:</b> Distant traffic audible at low level during site activity lulls. Crow calls. <b>Specific L<sub>Aeq T</sub> determination:</b> Leq representative.						
Ni2 day 2/3	11.07.17	1416- 1446	0	58	58	45	58
	<b>Facility:</b> As previous. <b>Extraneous:</b> As previous. <b>Specific L<sub>Aeq T</sub> determination:</b> As previous.						
Ni2 day 3/3	11.07.17	1538- 1608	0	60	60	46	60
	<b>Facility:</b> As previous. <b>Extraneous:</b> As previous. <b>Specific L<sub>Aeq T</sub> determination:</b> As previous.						
Ni2 eve 1/1	11.07.17	2047- 2117	0	51	54	39	51
	<b>Facility:</b> Grab, telescopic handler and bale wrapping plant clearly audible continuously. <b>Extraneous:</b> None audible apart from local bird song/calls. <b>Specific L<sub>Aeq T</sub> determination:</b> Leq representative.						
Ni2 Night 1/1	11.07.17	2336- 0006	0	38	39	32	<32
	<b>Facility:</b> No emissions audible due to plant breakdown. <b>Extraneous:</b> Distant traffic and continuous whine from source to NE quite audible. <b>Specific L<sub>Aeq T</sub> determination:</b> No emissions, thus <L95.						
Ni2 night 2/2	11.07.17	0051- 0121	0	34	36	30	<34
	<b>Facility:</b> Bale wrapping halted. Sporadic emissions from telescopic handler repair operation. <b>Extraneous:</b> As previous. <b>Specific L<sub>Aeq T</sub> determination:</b> Sporadic emissions insufficient to influence data, thus <Leq.						

Station	Date	Time	Wind vector	L <sub>Aeq 30 min</sub> dB	L <sub>AF10 30 min</sub> dB	L <sub>AF90 30 min</sub> dB	Specific L <sub>Aeq 30 min</sub> dB
Ni3 day 1/3	11.07.17	1341-1411	0	55	56	47	55
	<b>Facility:</b> Operations in S end of adjacent building continuously clearly audible, with baler and conveyor emissions continuously present. Yard activity also quite audible. <b>Extraneous:</b> None apart from crow calls. <b>Specific L<sub>Aeq T</sub> determination:</b> Leq representative.						
Ni3 day 2/3	11.07.17	1458-1528	0	54	56	51	54
	<b>Facility:</b> As previous. <b>Extraneous:</b> As previous. <b>Specific L<sub>Aeq T</sub> determination:</b> As previous.						
Ni3 day 3/3	11.07.17	1614-1644	0	52	54	48	52
	<b>Facility:</b> As previous. Baler and conveyor operation in adjacent building ceased 1619. Other onsite sources continuously clearly audible thereafter. <b>Extraneous:</b> As previous. <b>Specific L<sub>Aeq T</sub> determination:</b> As previous.						
Ni3 eve 1/1	11.07.17	2126-2156	0	48	49	46	48
	<b>Facility:</b> Grab and bale wrapper in building continuously quite audible to 2155. <b>Extraneous:</b> Prior to 2155, distant traffic slightly audible, in addition to bird song/calls. These emissions similarly audible after 2155, in addition to continuous broadband emissions from mobile phone mast cabinets outside boundary. <b>Specific L<sub>Aeq T</sub> determination:</b> Leq to 2155 representative, normalised to 30 min.						
Ni3 night 1/2	11.07.17	2302-2332	0	45	46	44	45
	<b>Facility:</b> Grab and bale wrapper in building continuously quite audible. <b>Extraneous:</b> Distant traffic slightly audible, in addition to mobile phone mast cabinets outside boundary. <b>Specific L<sub>Aeq T</sub> determination:</b> Leq representative.						
Ni3 night 2/2	12.07.17	0012-0042	0	44	45	42	41
	<b>Facility:</b> Grab and bale wrapper in building intermittently quite audible to 0025. No emissions thereafter, apart from repair van arrival 0030, and subsequent sporadic repair emissions. <b>Extraneous:</b> Distant traffic slightly audible, in addition to mobile phone mast cabinets outside boundary, when site operations underway. These sources more clearly audible when site emissions ceased. <b>Specific L<sub>Aeq T</sub> determination:</b> Leq to 0025 representative, normalised to 30 min.						

Station	Date	Time	Wind vector	L <sub>Aeq 30 min</sub> dB	L <sub>AF10 30 min</sub> dB	L <sub>AF90 30 min</sub> dB	Specific L <sub>Aeq 30 min</sub> dB
CAS day 1/3	11.07.17	1334-1404	0	62	66	50	62
	<b>Facility:</b> Truck and plant activity on main yard and in building continuously dominant. Occasional truck movements on local yard and through weighbridge dominant when present. Sporadic user waste disposal activities at surrounding CAS dominant when present. <b>Extraneous:</b> None audible apart from crow calls. <b>Specific L<sub>Aeq T</sub> determination:</b> Leq representative.						
CAS day 2/3	11.07.17	1454-1524	0	69	71	57	69
	<b>Facility:</b> As previous. Yard busier than earlier due to returning compactor trucks, and trucks idling while waiting for weighbridge access. <b>Extraneous:</b> As previous. <b>Specific L<sub>Aeq T</sub> determination:</b> As previous.						
CAS day 3/3	11.07.17	1610-1640	0	68	71	55	68
	<b>Facility:</b> As previous, although yard truck activity now reduced. <b>Extraneous:</b> As previous. <b>Specific L<sub>Aeq T</sub> determination:</b> As previous.						
CAS eve 1/1	11.07.17	2134-2204	0	48	49	37	47
	<b>Facility:</b> Grab, bale wrapper and telescopic handler almost continuously clearly audible until 2155. <b>Extraneous:</b> Dock road traffic slightly audible prior to 2155. Thereafter, audible at low level continuously. Bird song/calls. <b>Specific L<sub>Aeq T</sub> determination:</b> Leq prior to 2155 representative, normalised to 30 min.						
CAS night 1/2	11.07.17	2304-2334	0	45	48	40	45
	<b>Facility:</b> Grab, bale wrapper and telescopic handler almost continuously clearly audible. <b>Extraneous:</b> Dock road traffic slightly audible. <b>Specific L<sub>Aeq T</sub> determination:</b> Leq representative.						
CAS night 2/2	11.07.17	0018-0048	0	43	43	34	38
	<b>Facility:</b> Grab and bale wrapper in building intermittently quite audible to 0025. No emissions thereafter, apart from repair van arrival 0030, and subsequent sporadic repair emissions. <b>Extraneous:</b> Distant traffic slightly audible when site operations underway. Traffic and distant whine to NE audible at low level. <b>Specific L<sub>Aeq T</sub> determination:</b> Leq to 0025 representative, normalised to 30 min.						

**Specific L<sub>Aeq</sub>:** Level considered attributable to source under consideration, determined using real time assessment, field notes, time history profiles, statistical analysis, frequency spectra, spectral statistics and near field correction if applicable.

**Audibility scale:** Inaudible; faintly audible; slightly audible; audible at low level; quite audible; clearly audible; dominant; intrusive; excessive.

### 3.3 Dust Monitoring

The revised Licence requires dust monitoring to be carried out quarterly at four monitoring locations, D1, D2, D3 and D4. The results of the monitoring are included on Table 3.14.

The dust deposition limit was exceeded at D1 and D2 in February/March. The laboratory noted that both gauges contained a considerable amount of brown particulates and algal residue which contributed to the large amount of organic dust measured at these locations (570 mg/m<sup>2</sup>/day at D1 and 422 mg/m<sup>2</sup>/day at D2). SEHL cut back a significant amount of foliage in the vicinity of these two dust monitoring locations during the reporting period. It is likely that the cutting back of the foliage increased the amount of organic dust at the two monitoring locations.

In May/June the dust levels measured at D1 exceeded the dust deposition limit. The gauge is located away from the main areas of site activity. The gauge is however located beneath the branches of a tree located on an adjacent property, which is the most likely source of organic dust. SEHL have, with the property owner's agreement, cut back the tree which led to a decrease in the dust measured at this location for the remainder of the monitoring period.

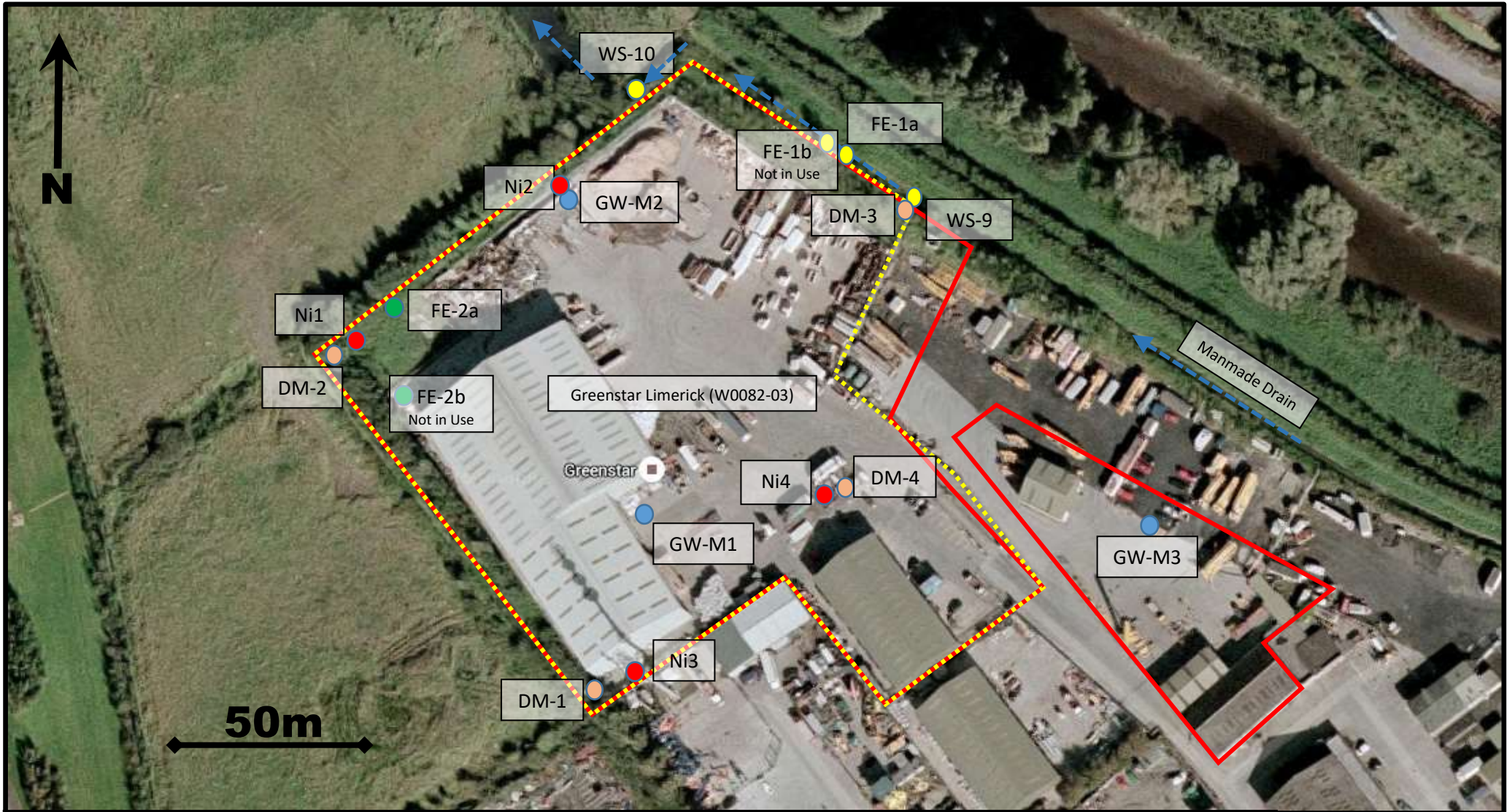
In August and November, the dust levels at D3 exceeded the dust deposition limit. SEHL have carried out an investigation into the likely sources of the dust. The gauge is located near the treeline which may have contributed to the high organic content. SEHL have cut back the trees and hope this will lead to a decrease in the dust levels measured at this location.


The dust emission limit (350 mg/m<sup>2</sup>/day) was not exceeded at any monitoring location during the monitoring period.

**Table 3.14** Dust Monitoring Results 2017

Dust Emission (mg/m <sup>2</sup> /day)	February/ March	May/ June	August	November	Emission Limit
Sample Location	30 Days	30 Days	28 Days	30 Days	(mg/m <sup>2</sup> /day)
D1	771	621	72	<10	350
D2	540	139	235	169	350
D3	344	166	428	810	350
D4	133	72	31	33	350





 <p>O'Callaghan Moran &amp; Associates, Unit 15 Melbourne Business Park, Model Farm Road, Cork, Ireland. Tel. (021) 4345366 Email: info@ocallaghanmoran.com</p>	<p><b>Legend:</b></p> <ul style="list-style-type: none"> <li><span style="color: yellow;">- - - - -</span> Lease boundary</li> <li><span style="color: red;">———</span> Licence Boundary</li> <li><span style="color: blue;">- - - - -</span> Stream Flow Direction</li> <li><span style="color: red;">●</span> Noise Monitoring Location</li> <li><span style="color: green;">●</span> Wastewater Monitoring Location</li> <li><span style="color: orange;">●</span> Dust Monitoring Location</li> <li><span style="color: blue;">●</span> Groundwater Monitoring Location</li> <li><span style="color: yellow;">●</span> Surface Water Monitoring Location</li> </ul>	<p>Waste Licence No. <b>W0082-03</b></p> <p><b>Figure:</b> <b>Figure 3.1</b></p>	
<p>This drawing is the property of O'Callaghan Moran &amp; Associates and shall not be used, reproduced or disclosed to anyone without the prior written permission of O'Callaghan Moran &amp; Associates and shall be returned upon request.</p>	<p><b>Client:</b> <b>Starrus Eco Holdings Ltd</b></p>	<p><b>Title:</b> <b>Environmental Monitoring Locations</b></p>	<p><b>Scale:</b> NOT TO SCALE</p>



---

## 4. SITE DEVELOPMENT WORKS

---

### 4.1 Specified Engineering Works (SEW)

No Specified Engineering Works were completed during 2017. It is proposed to carry out major works on the drainage infrastructure following approval to connect to Bunlicky Wastewater Treatment Plant in 2018.

### 4.2 Summary of Resource & Energy Consumption

Table 4.1 presents an estimate of the resources used on-site during the reporting period and for comparative purposes the volumes for 2014, 2015 and 2016.

**Table 4.1** Estimate of Resources Used On-Site 2014, 2015, 2016 and 2017

Resources	2014	2015	2016	2017
Diesel (green)	82,432 litres	85,700 litres	124,907 litres	172,648 litres
Electricity	298,451 kwh	325,376 kWh	336,495 kWh	322,000 kWh
Hydraulic Oil	3,000 Litres	3,000 litres	3,500 litres	3,5000 litres
Engine Oil	1,000 Litres	600 litres	800 litres	800 litres
Mains Water	12,178m <sup>3</sup>	5,972 m <sup>3</sup>	6,034 m <sup>3</sup>	~6,000 m <sup>3</sup>

### 4.3 Bund Integrity & Pipeline Testing

The Licence was renewed on the 15<sup>th</sup> May 2015 and condition 6.8 states that the integrity testing of all underground pipelines and tanks must be carried out within six months of date of grant of the Licence and every 3 years thereafter. Bund integrity testing was carried out in September 2015 and all bunds were passed fit for purpose. Testing will be carried out again in 2018. The reports are retained at the installation for Agency inspection.

Pipeline integrity testing was carried out in May 2016 by McBreen Environmental. Records are available on site for inspection.

---

## **5. WASTE RECEIVED AND CONSIGNED FROM THE FACILITY**

---

Table 5.1 shows the quantities of wastes accepted and consigned for the reporting period. A more detailed description of the wastes received and consigned in 2017 is presented in the PRTR submission in Appendix 1.

The total quantity of waste received was 112,458 tonnes. The total waste consigned was 114,818 tonnes. The difference remained onsite at the end of 2016 and was removed offsite in 2017. For comparative purposes the amounts of waste received and consigned from 2008 to 2016 are presented in Tables 5.2 and 5.3.

All the wastes consigned from the site went to authorised recovery and disposal facilities.

**Table 5.1** Waste Received & Consigned 2017

<b>EWC</b>	<b>Description</b>	<b>Waste In</b>	<b>Waste Out</b>
15 01 01	Paper & cardboard packaging	7,292.142	7,341.89
15 01 02	Plastic packaging	355.685	327.72
15 01 03	Wooden packaging	0.42	143.42
15 01 05	Composite Packaging	10.68	
15 01 06	Mixed packaging	442.249	
15 01 07	Glass Packaging	488.19	1,183.82
15 01 09	Textiles		0.34
15 02 03	Absorbents	25.92	
17 02 03	Plastic	10.58	
17 04 05	Soil & Stones	1.04	671.90
17 08 02	Gypsum-based construction materials	4.96	
17 09 04	Mixed construction and demolition wastes	2,109.92	1,648.48
19 09 02	Liquid Sludge	9.46	
19 10 01	Metal	4.1	
19 12 07	Wood	1.84	1,154.63
19 12 10	Compost		1,046.78
19 12 12	Other wastes	1,028.96	36,584.295
20 01 01	Paper & cardboard	2,101.724	1,962.98
20 01 02	Glass	1,016.074	292.536
20 01 08	Biodegradable kitchen and canteen waste	6,448.734	5,593.07
20 01 11	Textiles	16.12	
20 01 35	Discarded electrical and electronic equipment	16.46	
20 01 38	Wood	2,273.97	1,741.22
20 01 39	Plastics	360.115	46.38
20 01 40	Metals	153.44	734.81
20 02 01	Biodegradable waste	63.92	96.02
20 03 01	Mixed municipal waste	78,153.801	44,737.658
20 03 03	Street-cleaning residues	1,548.16	1,528.22
20 03 06	Sewage residues		126.44
20 03 07	Bulky waste	8,519.958	7,856.174
	<b>Total Received</b>	<b>112,458.622</b>	
	<b>Total Consigned</b>		<b>114,818.783</b>
	<b>Disposal</b>		<b>3,418.062</b>
	<b>Recovery</b>		<b>111,400.721</b>
	<b>Recovery Rate</b>		<b>97%</b>

**Table 5.2** Waste Received & Consigned 2016

<b>EWC</b>	<b>Description</b>	<b>Waste In</b>	<b>Waste Out</b>
05 034	Liquid Sludge	1.2	
15 01 01	Paper & cardboard packaging	6038.724	6700.77
15 01 02	Plastic packaging	424.14	374.84
15 01 03	Wooden packaging	3.84	79.42
15 01 05	Composite Packaging	7.382	
15 01 06	Mixed packaging	6.32	
15 01 07	Glass Packaging	284.85	991.66
17 01 07	Mixture of concrete, bricks, tiles and ceramics	5.98	2341.06
17 02 03	Plastic	1.84	
17 08 02	Gypsum-based construction materials	1.14	
17 09 04	Mixed construction and demolition wastes	2204.094	52.56
18 01 04	Wastes whose collection and disposal is not subject to special requirements in order to prevent infection	31.27	
19 09 02	Liquid Sludge	13.74	
19 12 07	Wood	1.7	2005.82
19 12 09	Minerals	90.48	
19 12 10	Compost	7.44	659.44
19 12 12	Other wastes	49.46	14772.491
20 01 01	Paper & cardboard	1077.298	851.95
20 01 02	Glass	1074.534	260.72
20 01 08	Biodegradable kitchen and canteen waste	5249.091	4795.31
20 01 35	Discarded electrical and electronic equipment	12.66	
20 01 38	Wood	2025.759	126.84
20 01 39	Plastics	313.99	13.56
20 01 40	Metals	118.13	384.74
20 02 01	Biodegradable waste	47.72	149.72
20 03 01	Mixed municipal waste	72397.368	53702.201
20 03 03	Street-cleaning residues	1571.382	1538.66
20 03 06	Sewage residues		27.46
20 03 07	Bulky waste	6454.138	9568.60
	<b>Total Received</b>	<b>99,515.67</b>	
	<b>Total Consigned</b>		<b>99,397.822</b>
	<b>Disposal</b>		<b>4,460.48</b>
	<b>Recovery</b>		<b>94,937.342</b>
	<b>Recovery Rate</b>		<b>95.51%</b>

**Table 5.3** Waste Received & Consigned

<b>Year</b>	<b>Total Received</b>	<b>Total Consigned</b>
<b>2016</b>	99,516	99,398
<b>2015</b>	88,986	89,856
<b>2014</b>	99,646	98,699
<b>2013</b>	87,928	88,345
<b>2012</b>	55,992	55,430
<b>2011</b>	32,550	33,335
<b>2010</b>	34,835	34,476
<b>2009</b>	42,536	41,547
<b>2008</b>	58,203	58,654

---

## **6. ENVIRONMENTAL INCIDENTS AND COMPLAINTS**

---

### **6.1 Incidents**

There were four exceedances of the dust deposition limit in 2017. In February/March and May/June the limit was exceeded at D1, while the limit was also exceeded at D2 in February/March. In August and November the dust levels at D3 exceeded the dust deposition limit. All exceedances were reported to the Agency.

### **6.2 Register of Complaints**

SEHL maintains a register of complaints received in accordance with Condition 10.4 of the Licence. No complaints were received during the reporting period.

---

## 7. ENVIRONMENTAL DEVELOPMENT & CONTROL

---

### 7.1 Environmental Management Programme Report

SEHL have implemented an Integrated Management System (IMS) in accordance with the requirements of Occupational Health and Safety Assessment Series (OHSAS) 18001:2007 and International Standard Organisation (ISO) 14001:2004 in order to manage the Health, Safety and Environmental performance of their business and to control health and safety risk and to minimise their environmental aspects and impacts.

The IMS has been developed for the achievement of continual improvement taking into account the requirements of the Waste Licence Conditions. SEHL has prepared and effectively implemented documented procedures and instructions in accordance with the requirements of both the OHSAS 18001:2007 and ISO 14001:2004. A successful ISO re-certification audit was completed at the facility in December 2015. The installation is accredited to both standards.

The schedule of Objectives and Targets, including their status for 2017 (Table 7.1), as well as the proposed Objectives and Targets for 2018 (Table 7.2) are presented below. An index of procedures used at the installation is included in Appendix 2.

#### 7.1.1 Site Management Structure

Management and Staffing structure: -

**Name:** Robert Waters  
**Responsibility:** Site Operations Manager (January to October)  
**Experience:** 10 years waste management experience; Completed the CIWM accredited Waste Management and compliance course.

**Name:** David Jervis  
**Responsibility:** Site Operations Manager (October to December)  
**Experience:** 10 years waste management experience; Completed the CIWM accredited Waste Management and compliance course.

**Name:** Philip O'Sullivan  
**Responsibility:** Yard Supervisor  
**Experience:** 7 years waste management experience; Completed the CIWM accredited Waste Management and compliance course.

### *7.1.2 Staff Training*

Staff training is carried out as necessary and details are maintained at the installation office. In 2017, manual handling and equipment operations training was carried out.

## **7.2 Environmental Management Programme**

### *7.2.1 Schedule of Objectives 2017*

The objectives that were achieved during this reporting period are outlined in Table 7.1.

### *7.2.2 Schedule of Objectives 2018*

A schedule of targets and objectives for 2018 has been set by the management of the installation. These objectives are outlined in Table 7.2.

## **7.3 Communications Programme**

SEHL is committed to setting the standard in waste management and ensuring environmental compliance in all operations. In addition, SEHL's Environmental, Health & Safety Policy makes a specific commitment to ensure that this policy and environmental records are available to the public and interested parties.

To this end SEHL has drawn up a Communications Programme, which details how members of the public are facilitated in accessing and viewing environmental information at the installation. Members of the public who wish to inspect these files may do so at any reasonable time by making an appointment with the Operations Manager using the telephone number posted on the main installation entrance sign.

## **7.4 Report Financial Provision**

A Decommissioning Management Plan (DMP) and Environmental Liabilities Risk Assessment (ELRA) including Financial Provision (FP) were submitted to the Agency in 2013 as part of the transfer of the licence which occurred in Q1 2014. Both the DMP and ELRA have been approved by the Agency and provision is in place with agreement of the Agency. In 2017, the Agency requested a review of the DMP and ELRA, copies of the reports were submitted in April.

**Table 7.1** Objectives and Targets for 2017

No	Objective	Target	Timescale	Responsibility	Status
1	<b>Odour management</b>	Ensure odour management plans are followed and potential new sources of odour are identified	Q1 - Q4	Site management	Ongoing
2	<b>Fire prevention</b>	Implement recs from Fire Risk Assessments Update ERP & APP Maintain fire detection equipment	Q1 - Q4	Site management/ EHS team	Ongoing
3	<b>Waste storage</b>	Review waste storage practices on each site to ensure that they are in line with licence conditions, fire prevention and insurance recommendations	Q1 - Q4	Site management/ EHS team	Ongoing
4	<b>Waste acceptance, classification &amp; records</b>	EWC training for all weighbridge ops. Centralisation of all licences & permits including NWCPs for hauliers.	Q1 - Q4	EHS team	Completed
5	<b>CRAMP, ELRA &amp; Financial Provision</b>	CRAMP, ELRA & Financial Provision to be reviewed	Q2	EHS team	Completed
6	<b>Lighting in MRF buildings</b>	Clean & upgrade where required all light fittings in MRF buildings	Q3	Site management	Completed
7	<b>NWCP exemptions</b>	Implement NWCP exemption declarations	Q1 - Q4	Site management	Completed
8	<b>WWTP connection</b>	Progress WWTP connection w/ Irish Water	Q1-Q4	EHS team	Ongoing
9	<b>Tankering of SW &amp; Wastewater</b>	Continue tankering SW & Wastewater in advance of WWTP connection	Q1-Q4	Site management	Ongoing
10	<b>Monitoring points</b>	Maintain clear access to all monitoring points	Q1-Q4	Site management	Ongoing
11	<b>Replace wind sock</b>	Replace the wind sock at the installation	Q2	Site management	Completed



**Table 7.2** Schedule of Objective and Targets 2018

No	Objective	Target	Timescale	Responsibility
1	<b>Nuisance management</b>	Ensure odour/noise/dust management plans are followed and potential new sources are identified	Q1 - Q4	Site management
2	<b>Fire prevention</b>	Implement recs from Fire Risk Assessments Update ERP & APP where applicable Maintain fire detection equipment	Q1 - Q4	Site management/EHS team
3	<b>Waste storage</b>	Review waste storage practices on each site to ensure that they are in line with licence conditions, fire prevention and insurance recommendations	Q1 - Q4	Site management/EHS team
4	<b>ISO 14001 transition</b>	Transition ISO 14001 to the 2015 standard	Q2	EHS team
5	<b>Paperless project</b>	Implement plans for a paperless office	Q3-Q4	All staff
6	<b>Resource tracking</b>	Sites to track energy usage and other resources in order to conserve wherever possible	Q1 - Q4	Site management/EHS team
7	<b>Hardstand &amp; site infrastructure</b>	Review hardstand and formulate repair plan as required. Record using EF11.	Q1 - Q4	Site management/EHS team
8	<b>Bund tests</b>	Integrity test all bunds on site	Q3	EHS Team/site management

## **7.5 Nuisance Controls**

SEHL has contracted a vermin control company to carry out nuisance control at the installation. Rentokil Initial Ltd provides and maintains forty bait boxes at the installation and also carries out insect control measures as required. Weekly nuisance and litter inspections are carried out and litter picks are carried out daily.

---

## **8. OTHER REPORTS**

---

### **8.1 European Pollutant Release and Transfer Register Regulation**

Under the European Pollutant Release and Transfer Register Regulation (EC) No. 166/2006 SEHL are required to submit information annually to the Agency. A copy of the information submitted to the Agency via the web-based data reporting system is included in Appendix 1.

# **APPENDIX 1**

European Pollutant Release and Transfer Register



Environmental Protection Agency

| PRTR# : W0082 | Facility Name : Starrus Eco Holdings Limited (Dock Road) |  
 Filename : W0082\_2017.xls | Return Year : 2017 |

[Guidance to completing the PRTR workbook](#)

# PRTR Returns Workbook

Version 1.1.19

<b>REFERENCE YEAR</b>	2017
-----------------------	------

## 1. FACILITY IDENTIFICATION

Parent Company Name	Starrus Eco Holdings Limited
Facility Name	Starrus Eco Holdings Limited (Dock Road)
PRTR Identification Number	W0082
Licence Number	W0082-03

### Classes of Activity

No.	class name
-	Refer to PRTR class activities below

Address 1	Ballykeefe Townland
Address 2	Waste Management Section
Address 3	Dock Road
Address 4	Limerick
	Limerick
Country	Ireland
Coordinates of Location	-8.66662 52.651
River Basin District	IEGBNISH
NACE Code	3821
Main Economic Activity	Treatment and disposal of non-hazardous waste
<b>AER Returns Contact Name</b>	Sara Smyth
<b>AER Returns Contact Email Address</b>	sara.smyth@greenstar.ie
<b>AER Returns Contact Position</b>	Environmental Engineer
<b>AER Returns Contact Telephone Number</b>	01 2746236
<b>AER Returns Contact Mobile Phone Number</b>	
<b>AER Returns Contact Fax Number</b>	01 2829525
<b>Production Volume</b>	0.0
<b>Production Volume Units</b>	
<b>Number of Installations</b>	0
<b>Number of Operating Hours in Year</b>	0
<b>Number of Employees</b>	16
<b>User Feedback/Comments</b>	
<b>Web Address</b>	

## 2. PRTR CLASS ACTIVITIES

Activity Number	Activity Name
5(c)	Installations for the disposal of non-hazardous waste
5(c)	Installations for the disposal of non-hazardous waste
50.1	General

## 3. SOLVENTS REGULATIONS (S.I. No. 543 of 2002)

Is it applicable?	
Have you been granted an exemption ?	
If applicable which activity class applies (as per Schedule 2 of the regulations) ?	
Is the reduction scheme compliance route being used ?	

## 4. WASTE IMPORTED/ACCEPTED ONTO SITE

[Guidance on waste imported/accepted onto site](#)

Do you import/accept waste onto your site for on-site treatment (either recovery or disposal activities) ?	
--	--

4.1 RELEASES TO AIR

[Link to previous years emissions data](#)

| PRTR# : W0082 | Facility Name : Starrus Eco Holdings Limited (Dock Road) | Filename : W0082\_2017.xls | Return Year : 2017 |

05/04/2018 16:07

**SECTION A : SECTOR SPECIFIC PRTR POLLUTANTS**

POLLUTANT		METHOD			Please enter all quantities in this section in KGs			
RELEASES TO AIR		METHOD USED			QUANTITY			
No. Annex II	Name	M/C/E	Method Code	Designation or Description	Emission Point 1	T (Total) KG/Year	A (Accidental) KG/Year	F (Fugitive) KG/Year
					0.0	0.0	0.0	0.0

\* Select a row by double-clicking on the Pollutant Name (Column B) then click the delete button

**SECTION B : REMAINING PRTR POLLUTANTS**

POLLUTANT		METHOD			Please enter all quantities in this section in KGs			
RELEASES TO AIR		METHOD USED			QUANTITY			
No. Annex II	Name	M/C/E	Method Code	Designation or Description	Emission Point 1	T (Total) KG/Year	A (Accidental) KG/Year	F (Fugitive) KG/Year
					0.0	0.0	0.0	0.0

\* Select a row by double-clicking on the Pollutant Name (Column B) then click the delete button

**SECTION C : REMAINING POLLUTANT EMISSIONS (As required in your Licence)**

POLLUTANT		METHOD			Please enter all quantities in this section in KGs			
RELEASES TO AIR		METHOD USED			QUANTITY			
Pollutant No.	Name	M/C/E	Method Code	Designation or Description	Emission Point 1	T (Total) KG/Year	A (Accidental) KG/Year	F (Fugitive) KG/Year
					0.0	0.0	0.0	0.0

\* Select a row by double-clicking on the Pollutant Name (Column B) then click the delete button

**Additional Data Requested from Landfill operators**

For the purposes of the National Inventory on Greenhouse Gases, landfill operators are requested to provide summary data on landfill gas (Methane) flared or utilised on their facilities to accompany the figures for total methane generated. Operators should only report their Net methane (CH4) emission to the environment under T(total) KG/yr for Section A: Sector specific PRTR pollutants above. Please complete the table below:

Landfill:

Starrus Eco Holdings Limited (Dock Road)

Please enter summary data on the quantities of methane flared and / or utilised

	T (Total) kg/Year	M/C/E	Method Used		Facility Total Capacity m3 per hour
			Method Code	Designation or Description	
Total estimated methane generation (as per site model)	0.0				N/A
Methane flared	0.0				0.0 (Total Flaring Capacity)
Methane utilised in engine/s	0.0				0.0 (Total Utilising Capacity)
Net methane emission (as reported in Section A above)	0.0				N/A

4.2 RELEASES TO WATERS

[Link to previous years emissions data](#)

| PRTR# : W0082 | Facility Name : Starrus Eco Holdings Limited (Dock Road) | Filename : W0082\_2017.xls | Return Year : 2017 |

05/04/2018 16:12

**SECTION A : SECTOR SPECIFIC PRTR POLLUTANTS**

Data on ambient monitoring of storm/surface water or groundwater, conducted as part of your licence requirements, should NOT be submitted under AER / PRTR Reporting as it

RELEASES TO WATERS					Please enter all quantities in this section in KGs			
POLLUTANT		M/C/E	Method Used		QUANTITY			
No. Annex II	Name		Method Code	Designation or Description	Emission Point 1	T (Total) KG/Year	A (Accidental) KG/Year	F (Fugitive) KG/Year
					0.0	0.0	0.0	0.0

\* Select a row by double-clicking on the Pollutant Name (Column B) then click the delete button

**SECTION B : REMAINING PRTR POLLUTANTS**

RELEASES TO WATERS					Please enter all quantities in this section in KGs			
POLLUTANT		M/C/E	Method Used		QUANTITY			
No. Annex II	Name		Method Code	Designation or Description	Emission Point 1	T (Total) KG/Year	A (Accidental) KG/Year	F (Fugitive) KG/Year
					0.0	0.0	0.0	0.0

\* Select a row by double-clicking on the Pollutant Name (Column B) then click the delete button

**SECTION C : REMAINING POLLUTANT EMISSIONS (as required in your Licence)**

RELEASES TO WATERS					Please enter all quantities in this section in KGs			
POLLUTANT		M/C/E	Method Used		QUANTITY			
Pollutant No.	Name		Method Code	Designation or Description	Emission Point 1	T (Total) KG/Year	A (Accidental) KG/Year	F (Fugitive) KG/Year
					0.0	0.0	0.0	0.0

\* Select a row by double-clicking on the Pollutant Name (Column B) then click the delete button



4.3 RELEASES TO WASTEWATER OR SEWER

[Link to previous years emissions data](#)

| PRTR#: W0082 | Facility Name : Starrus Eco Holdings Limited (Dock Road) | Filename : W0082\_2

05/04/2018 16:12

**SECTION A : PRTR POLLUTANTS**

OFFSITE TRANSFER OF POLLUTANTS DESTINED FOR WASTE-WATER TREATMENT OR SEWER					Please enter all quantities in this section in KGs			
POLLUTANT		METHOD			QUANTITY			
No. Annex II	Name	M/C/E	Method Used		Emission Point 1	T (Total) KG/Year	A (Accidental) KG/Year	F (Fugitive) KG/Year
			Method Code	Designation or Description				
					0.0	0.0	0.0	0.0

\* Select a row by double-clicking on the Pollutant Name (Column B) then click the delete button

**SECTION B : REMAINING POLLUTANT EMISSIONS (as required in your Licence)**

OFFSITE TRANSFER OF POLLUTANTS DESTINED FOR WASTE-WATER TREATMENT OR SEWER					Please enter all quantities in this section in KGs			
POLLUTANT		METHOD			QUANTITY			
Pollutant No.	Name	M/C/E	Method Used		Emission Point 1	T (Total) KG/Year	A (Accidental) KG/Year	F (Fugitive) KG/Year
			Method Code	Designation or Description				
					0.0	0.0	0.0	0.0

\* Select a row by double-clicking on the Pollutant Name (Column B) then click the delete button

4.4 RELEASES TO LAND

[Link to previous years emissions data](#)

| PRTR# : W0082 | Facility Name : Starrus Eco Holdings Limited (Dock Road) | Filename : W0082\_2017.xls | Return Year : 2017 |

05/04/2018 16:12

**SECTION A : PRTR POLLUTANTS**

POLLUTANT		RELEASERS TO LAND			Please enter all quantities in this section in KGs		
POLLUTANT		METHOD			QUANTITY		
No. Annex II	Name	M/C/E	Method Code	Designation or Description	Emission Point 1	T (Total) KG/Year	A (Accidental) KG/Year
					0.0	0.0	0.0

\* Select a row by double-clicking on the Pollutant Name (Column B) then click the delete button

**SECTION B : REMAINING POLLUTANT EMISSIONS (as required in your Licence)**

POLLUTANT		RELEASERS TO LAND			Please enter all quantities in this section in KGs		
POLLUTANT		METHOD			QUANTITY		
Pollutant No.	Name	M/C/E	Method Code	Designation or Description	Emission Point 1	T (Total) KG/Year	A (Accidental) KG/Year
					0.0	0.0	0.0

\* Select a row by double-clicking on the Pollutant Name (Column B) then click the delete button

5. ONSITE TREATMENT & OFFSITE TRANSFERS OF WASTE

| PRTR# : W0082 | Facility Name : Starrus Eco Holdings Limited (Dock Road) | Filename : W0082\_2017.xls | Return Year : 2017 |

05/04/2018 16:13

Please enter all quantities on this sheet in Tonnes

0

Transfer Destination	European Waste Code	Hazardous	Quantity (Tonnes per Year)	Description of Waste	Waste Treatment Operation	Method Used		Location of Treatment	Haz Waste - Name and Licence/Permit No of Next Destination Facility Haz Waste - Name and Licence/Permit No of Recover/Disposer	Haz Waste : Address of Next Destination Facility Non Haz Waste: Address of Recover/Disposer	Name and License / Permit No. and Address of Final Recoverer / Disposer (HAZARDOUS WASTE ONLY)	Actual Address of Final Destination i.e. Final Recovery / Disposal Site (HAZARDOUS WASTE ONLY)
						M/C/E	Method Used					
Within the Country	15 01 01	No	2100.16	paper and cardboard packaging	R13	M	Weighed	Offsite in Ireland	Agnail Ltd,TFS Broker IRE/AG117/11	Ballymacken Industrial Estate,Ballymacken,Portlaoise,Co. Laois,Ireland		
To Other Countries	15 01 01	No	1233.66	paper and cardboard packaging	R13	M	Weighed	Abroad	Vipa Lausanne S.A.,IRE/G195/17	Galeries Benjamin-Constant 1,1002 Lausanne,Switzerland		
Within the Country	15 01 01	No	212.16	paper and cardboard packaging	R13	M	Weighed	Offsite in Ireland	Irish Packaging Recycling,W0263-01	Ballymount Road,Walkinstown,Dublin 12,,Ireland		
To Other Countries	15 01 01	No	2899.65	paper and cardboard packaging	R13	M	Weighed	Abroad	Saica Natur UK Limited,IRE/G277/15	144 Manchester Road,Carrington,Manchester ,M31 4QN,United Kingdom		
To Other Countries	15 01 02	No	120.6	plastic packaging	R13	M	Weighed	Abroad	Peute Recycling,TFS Broker IRE/G006/11	.....Ireland		
Within the Country	15 01 02	No	43.96	plastic packaging	R13	M	Weighed	Offsite in Ireland	Irish Packaging Recycling,W0263-01	Ballymount Road,Walkinstown,Dublin 12,,Ireland		
To Other Countries	15 01 02	No	108.58	plastic packaging	R13	M	Weighed	Abroad	Vanden Recycling,IRE/G274/18	Unit 11A Blaris Industrial Estate,Altona Road,Lisburn,BT27 5QB,United Kingdom		
Within the Country	15 01 02	No	54.58	plastic packaging	R13	M	Weighed	Offsite in Ireland	Leinster Environmental,WFP-LH-09-0004-01	Dundalk,....Louth,Ireland		
Within the Country	15 01 03	No	111.44	wooden packaging	R3	M	Weighed	Offsite in Ireland	Quitman O neill Packaging LTD,.	....Galway,....Ireland		
Within the Country	15 01 07	No	1183.82	glass packaging	R5	M	Weighed	Offsite in Ireland	Mr Binman,W0061-03	Luddenmore ,Grange ,Kilmallock ,Co Limerick,Ireland		
Within the Country	17 05 04	No	671.9	soil and stones other than those mentioned in 17 05 03	R5	M	Weighed	Offsite in Ireland	Eddie Russell,COR-CE-15-0005-01	Sixmilebridge,Co. Clare,....Ireland		
Within the Country	17 09 04	No	1648.48	mixed construction and demolition wastes other than those mentioned in 17 09 01, 17 09 02 and 17 09 03	R5	M	Weighed	Offsite in Ireland	Eddie Russell,COR-CE-15-0005-01	Sixmilebridge,Co. Clare,....Ireland		
Within the Country	19 12 07	No	1154.63	wood other than that mentioned in 19 12 06	R13	M	Weighed	Offsite in Ireland	Clonmel Waste Disposal Ltd,WP-008-02	Lawlesstown,Clonmel,Co Tipperary,Ireland		
Within the Country	19 12 10	No	994.22	combustible waste (refuse derived fuel)	R13	M	Weighed	Offsite in Ireland	Starrus Eco Holdings Ltd.,W0136-03	Sarsfield Court Industrial Estate,Glanmire,Co. Cork,.,Ireland		
Within the Country	19 12 10	No	52.56	combustible waste (refuse derived fuel)	R13	M	Weighed	Offsite in Ireland	Nurendale Ltd.,W0140-04	Rathdrinagh,Beauparc,Navan,Co. Meath,Ireland		
Within the Country	19 12 12	No	3689.071	other wastes (including mixtures of materials) from mechanical treatment of wastes other than those mentioned in 19 12 11	R3	M	Weighed	Offsite in Ireland	McGill Environmental Systems,W180-01	Coom,Glennville,Co. Cork,.,Ireland		
Within the Country	19 12 12	No	2713.894	other wastes (including mixtures of materials) from mechanical treatment of wastes other than those mentioned in 19 12 11	R13	M	Weighed	Offsite in Ireland	Nurendale Ltd.,W0140-04	Rathdrinagh,Beauparc,Navan,Co. Meath,Ireland		
To Other Countries	19 12 12	No	3646.08	other wastes (including mixtures of materials) from mechanical treatment of wastes other than those mentioned in 19 12 11	R13	M	Weighed	Abroad	E.ON Varne Sverige AB Handloverke,556146-1814	Energigatan5,SE-601,71 Norrkoping,.,Sweden		
To Other Countries	19 12 12	No	15007.96	other wastes (including mixtures of materials) from mechanical treatment of wastes other than those mentioned in 19 12 11	R13	M	Weighed	Abroad	Attero BV,670283	Vamweg 7 ,9418 TM Wijster ,.,Netherlands		

Transfer Destination	European Waste Code	Hazardous	Quantity (Tonnes per Year)	Description of Waste	Waste Treatment Operation	Method Used		Location of Treatment	Licence/Permit No of Next Destination Facility Haz Waste: Name and Licence/Permit No of Recover/Disposer Non-Haz Waste: Name and Licence/Permit No of Recover/Disposer	Haz Waste: Address of Next Destination Facility Non-Haz Waste: Address of Recover/Disposer	Name and License / Permit No. and Address of Final Recoverer / Disposer (HAZARDOUS WASTE ONLY)	Actual Address of Final Destination i.e. Final Recovery / Disposal Site (HAZARDOUS WASTE ONLY)
						M/C/E	Method Used					
Within the Country	19 12 12	No	4518.32	11 other wastes (including mixtures of materials) from mechanical treatment of wastes other than those mentioned in 19 12	R13	M	Weighed	Offsite in Ireland	Enrich Environmental Ltd.,NWCPO-01-00819-02	Larch Hill,Kilcock,Co. Meath,.,Ireland		
Within the Country	19 12 12	No	549.64	11 other wastes (including mixtures of materials) from mechanical treatment of wastes other than those mentioned in 19 12	D5	M	Weighed	Offsite in Ireland	Bord na Mona,W0201-03	Drehid,Carbury,Kildare,.,Ireland		
Within the Country	19 12 12	No	4555.95	11 other wastes (including mixtures of materials) from mechanical treatment of wastes other than those mentioned in 19 12	R13	M	Weighed	Offsite in Ireland	Starrus Eco Holdings Ltd.,W0136-03	Sarsfield Court Industrial Estate,Glanmire,Co. Cork,.,Ireland		
Within the Country	19 12 12	No	71.92	11 other wastes (including mixtures of materials) from mechanical treatment of wastes other than those mentioned in 19 12	R13	M	Weighed	Offsite in Ireland	Starrus Eco Holdings Ltd.,W0053-03	.,Fassaroe,Bray,Co. Wicklow,Ireland		
Within the Country	19 12 12	No	1831.46	11 other wastes (including mixtures of materials) from mechanical treatment of wastes other than those mentioned in 19 12	R3	M	Weighed	Offsite in Ireland	OD Recycling,WFP-TS-10-0009-01	Ballyboe,Kilsheelan,Clonmel,Co. Tipperary,Ireland		
Within the Country	20 01 01	No	184.08	paper and cardboard	R3	M	Weighed	Offsite in Ireland	Shred It Ireland,.,	.,.,.,.,Ireland		
Within the Country	20 01 01	No	931.22	paper and cardboard	R3	M	Weighed	Offsite in Ireland	Shred It Ireland,.,	Raheen Business Park,Ballycummin,Raheen ,Co. Limerick,Ireland		
Within the Country	20 01 01	No	847.68	paper and cardboard	R3	M	Weighed	Offsite in Ireland	Irish Packaging Recycling,W0263-01	Road,Walkinstown,Dublin 12,.,Ireland		
Within the Country	20 01 02	No	292.536	glass	R5	M	Weighed	Offsite in Ireland	Mr Binman,W0061-03	Luddenmore ,Grange ,Kilmallock ,Co Limerick,Ireland		
Within the Country	20 01 08	No	36.02	biodegradable kitchen and canteen waste	R3	M	Weighed	Offsite in Ireland	Clonmel Waste Disposal Ltd,W008-02	Lawlesstown,Clonmel,.,Co Tipperary,Ireland		
Within the Country	20 01 08	No	133.98	biodegradable kitchen and canteen waste	R3	M	Weighed	Offsite in Ireland	Acorn Recycling Limited,W0249-01	Ballybeg,Littleton,Co. Tipperary,.,Ireland		
Within the Country	20 01 08	No	5365.99	biodegradable kitchen and canteen waste	R3	M	Weighed	Offsite in Ireland	Ormonde Organics,W0287-01	Killowen,Portlaw,Co. Waterford,.,Ireland		
Within the Country	20 01 38	No	1690.1	wood other than that mentioned in 20 01 37	R13	M	Weighed	Offsite in Ireland	Clonmel Waste Disposal Ltd,W008-02	Lawlesstown,Clonmel,.,Co Tipperary,Ireland		
Within the Country	20 01 38	No	6.78	wood other than that mentioned in 20 01 37	R13	M	Weighed	Offsite in Ireland	Quitman O neill Packaging LTD,.,	.,.,Galway,.,Ireland		
Within the Country	20 01 40	No	734.81	metals	R4	M	Weighed	Offsite in Ireland	Clearcircle metals (Limerick),WFP-LKC-11-001-01	Ballysimon Road,Limerck,.,.,Ireland		
Within the Country	20 02 01	No	3.14	biodegradable waste	R3	M	Weighed	Offsite in Ireland	Clonmel Waste Disposal Ltd,W008-02	Lawlesstown,Clonmel,.,Co Tipperary,Ireland		
Within the Country	20 02 01	No	64.84	biodegradable waste	R3	M	Weighed	Offsite in Ireland	Ormonde Organics,W0287-01	Killowen,Portlaw,Co. Waterford,.,Ireland		
Within the Country	20 02 01	No	28.04	biodegradable waste	R3	M	Weighed	Offsite in Ireland	Enrich Environmental Ltd.,NWCPO-01-00819-02	Larch Hill,Kilcock,Co. Meath,.,Ireland		
Within the Country	20 03 01	No	2555.34	mixed municipal waste	R13	M	Weighed	Offsite in Ireland	Starrus Eco Holdings Ltd.,W0183-01	Millennium Business Park,Grange,Ballycoolin,Dublin 11,Ireland		
Within the Country	20 03 01	No	672.6	mixed municipal waste	R13	M	Weighed	Offsite in Ireland	Starrus Eco Holdings Ltd.,W0188-01	Greenogue Industrial Estate,Rathcoole,.,Co. Dublin,Ireland		
To Other Countries	20 03 01	No	23424.05	mixed municipal waste	R13	M	Weighed	Abroad	E.ON Varne Sverige AB Handloverke,556146-1814	Energigatan5E-601,71 Norrkoping,.,Sweden		
Within the Country	20 03 01	No	212.32	mixed municipal waste	R13	M	Weighed	Offsite in Ireland	Barna Waste,W0106-02	.,Carrowbrowne,Headford Road,Galway,Ireland		

Transfer Destination	European Waste Code	Hazardous	Quantity (Tonnes per Year)	Description of Waste	Waste Treatment Operation	Method Used		Location of Treatment	Licence/Permit No of Next Destination Facility		Name and License / Permit No. and Address of Final Recycler / Disposer (HAZARDOUS WASTE ONLY)	Actual Address of Final Destination i.e. Final Recovery / Disposal Site (HAZARDOUS WASTE ONLY)
						M/C/E	Method Used		Haz Waste: Name and Licence/Permit No of Recover/Disposer	Non Haz Waste: Address of Recover/Disposer		
Within the Country	20 03 01	No	25.58 mixed municipal waste		R13	M	Weighed	Offsite in Ireland	Irish Packaging Recycling,W0263-01	Ballymount Road,Walkinstown,Dublin 12,,Ireland		
Within the Country	20 03 01	No	11134.642 mixed municipal waste		R13	M	Weighed	Offsite in Ireland	Dillon Waste,WFP-KY-10-001	The kerries,Tralee,Kerry,,Ireland		
Within the Country	20 03 01	No	488.82 mixed municipal waste		D5	M	Weighed	Offsite in Ireland	Bord na Mona,W0201-03	Drehid,Carbury,Kildare,,Ireland		
Within the Country	20 03 01	No	4990.026 mixed municipal waste		R1	M	Weighed	Offsite in Ireland	Covanta,W0232-01	Pigeon House Road,Poolbeg Peninsula,Dublin 4,,Ireland		
Within the Country	20 03 01	No	165.58 mixed municipal waste		R13	M	Weighed	Offsite in Ireland	Starrus Eco Holdings Ltd.,W0053-03	.,Fassaroe,Bray,Co. Wicklow,Ireland		
Within the Country	20 03 01	No	199.38 mixed municipal waste		R13	M	Weighed	Offsite in Ireland	Starrus Eco Holdings Ltd.,W0136-03	Sarsfield Court Industrial Estate,Glanmire,Co. Cork,,Ireland		
Within the Country	20 03 01	No	384.8 mixed municipal waste		R13	M	Weighed	Offsite in Ireland	Starrus Property Holdings Ltd.,WFP-CK-10-0047-03	Sarsfieldcourt Industrial Estate,Glanmire,Co. Cork,,Ireland		
Within the Country	20 03 01	No	50.42 mixed municipal waste		R13	M	Weighed	Offsite in Ireland	Starrus Eco Holdings Ltd.,W0058-01	Deep Water Quay,Sligo,,Ireland		
Within the Country	20 03 01	No	339.6 mixed municipal waste		R12	M	Weighed	Offsite in Ireland	Glanway Ltd,WFP-KK-14-0002-01	11 Patrick's Street,Kilkenny,,Ireland		
Within the Country	20 03 03	No	462.78 street-cleaning residues		D5	M	Weighed	Offsite in Ireland	Bord na Mona,W0201-03	.....,Ireland		
Within the Country	20 03 07	No	7.46 bulky waste		R12	M	Weighed	Offsite in Ireland	Starrus Eco Holdings Ltd.,W0136-03	Sarsfield Court Industrial Estate,Glanmire,Co. Cork,,Ireland		
Within the Country	20 03 03	No	1065.44 street-cleaning residues		R13	M	Weighed	Offsite in Ireland	Starrus Eco Holdings Ltd.,W0053-03	.,Fassaroe,Bray,Co. Wicklow,Ireland		
Within the Country	20 03 06	No	126.44 waste from sewage cleaning		R13	M	Weighed	Offsite in Ireland	McBreen Environmental Ltd,WFP-CN-16-0001-01	Lismagraty,Cavan,Co. Cavan,,Ireland		
Within the Country	20 03 07	No	1916.822 bulky waste		D5	M	Weighed	Offsite in Ireland	Bord na Mona,W0201-03	.....,Ireland		
Within the Country	20 03 07	No	5746.092 bulky waste		R13	M	Weighed	Offsite in Ireland	Starrus Eco Holdings Ltd.,W0053-03	.,Fassaroe,Bray,Co. Wicklow,Ireland		
To Other Countries	15 01 01	No	673.54 paper and cardboard packaging		R3	M	Weighed	Abroad	Mark Lyndon Paper Products,IRE/G021/17	Triangle,Nottingham,,United Kingdom		
Within the Country	15 01 01	No	123.82 paper and cardboard packaging		R3	M	Weighed	Offsite in Ireland	Marwin Environmental,IRE/G027/17	7 Glyntown Heights,Glanmire,Co. Cork,,Ireland		
To Other Countries	15 01 01	No	69.82 paper and cardboard packaging		R3	M	Weighed	Abroad	MLM (T/A ACN Europe),IRE/G022/17	Egerton House,Towers Business Park,Wilmslow Rd,Didsbury Manchester,United Kingdom		
Within the Country	15 01 03	No	31.98 wooden packaging		R13	M	Weighed	Offsite in Ireland	Starrus Eco Holdings Ltd.,W0177-03	Six Cross Roads Business Park,Carriganard,Waterford,,Ireland		
Within the Country	15 01 09	No	0.34 textile packaging		R3	M	Weighed	Offsite in Ireland	Textile Recycling Ltd.,N/A Clearcircle metals (Limerick),WFP-LKC-11-001-01	Ashfield,Naas Road,Clondalkin,Dublin 22,Ireland		
Within the Country	20 03 01	No	3.76 mixed municipal waste		R4	M	Weighed	Offsite in Ireland	Ballysimon Road,Limerck,,Ireland	Ballysimon Road,Limerck,,Ireland		
Within the Country	20 03 01	No	54.42 mixed municipal waste		R12	M	Weighed	Offsite in Ireland	Nurendale,W0039-02	Cross,Tallaght,Dublin 24,,Ireland		
Within the Country	20 03 01	No	36.32 mixed municipal waste		R12	M	Weighed	Offsite in Ireland	Dublin City Council,W0238-01	Merrywell Industrial Estate,Ballymount Road Lower,Ballymount ,Dublin 12,Ireland		

Transfer Destination	European Waste Code	Hazardous	Quantity (Tonnes per Year)	Description of Waste	Waste Treatment Operation	Method Used		Location of Treatment	<small>Haz Waste</small> - Name and Licence/Permit No of Next Destination Facility <small>Non Haz Waste</small> : Name and Licence/Permit No of Recover/Disposer	<small>Haz Waste</small> : Address of Next Destination Facility <small>Non Haz Waste</small> : Address of Recover/Disposer	Name and License / Permit No. and Address of Final Recoverer / Disposer (HAZARDOUS WASTE ONLY)	Actual Address of Final Destination i.e. Final Recovery / Disposal Site (HAZARDOUS WASTE ONLY)
						M/C/E	Method Used					
Within the Country	20 03 07	No	0.36 bulky waste		R3	M	Weighed	Offsite in Ireland	Textile Recycling Ltd.,N/A	Ashfield,Naas Road,Clondalkin,Dublin 22,Ireland		
Within the Country	20 03 07	No	185.44 bulky waste		R13	M	Weighed	Offsite in Ireland	Nurendale Ltd.,W0140-04	Rathdrinagh,Beauparc,Navan,Co. Meath,Ireland		
Within the Country	15 01 01	No	29.08 paper and cardboard packaging		R3	M	Weighed	Offsite in Ireland	DGD Papers Ltd.,WFP-L-2017-09C-R2	Park,Ballycummin,Raheen,Co. Limerick,Ireland		
Within the Country	20 01 38	No	44.34 wood other than that mentioned in 20 01 37		R3	M	Weighed	Offsite in Ireland	Acorn Recycling Limited,W0249-01	Ballybeg,Littleton,Co. Tipperary,,Ireland		
Within the Country	20 01 39	No	13.84 plastics		R3	M	Weighed	Offsite in Ireland	Leinster Environmental,WFP-LH-09-0004-01	Dundalk,,Louth,Ireland		
Within the Country	20 01 39	No	32.54 plastics		R13	M	Weighed	Offsite in Ireland	Irish Packaging Recycling,W0263-01	Ballymount Road,Walkinstown,Dublin 12,,Ireland		
Within the Country	20 01 08	No	57.08 biodegradable kitchen and canteen waste		R3	M	Weighed	Offsite in Ireland	OD Recycling,WFP-TS-10-0009-01	Ballyboe,Kilsheelan,Clonmel,Co. Tipperary,Ireland		

\* Select a row by double-clicking the Description of Waste then click the delete button

# **APPENDIX 2**

Procedures List



<b>Doc. No.:</b> Control	<b>Revision No.:</b> As Shown	<b>Issue Date:</b> As Shown
<b>Approved By:</b>	David Naughton – Group Environmental Manager	<b>Page 1 of 5</b>
	Joe Nicholson – Group H&S Manager	

**Integrated Procedures - IP**

IP-01	Document & Record Control Procedure	Rev 01, 22/05/17
IP-02	Health & Safety Risk Assessment Procedure	Rev 01, 22/05/17
IP-03	Environmental Aspects & Impacts Procedure	Rev 01, 22/05/17
IP-04	Legal & Regulatory Requirements Procedure	Rev 01, 22/05/17
IP-05	Objectives, Targets & Management Programmes Procedure	Rev 01, 22/05/17
IP-06	Competence, Training & Awareness Procedure	Rev 01, 22/05/17
IP-07	Communication & Consultation Procedure	Rev 01, 22/05/17
IP-08	Monitoring, Measurement & Improvement Procedure	Rev 01, 22/05/17
IP-09	Evaluation of Compliance Procedure	Rev 01, 22/05/17
IP-10	Non Conformances, Corrective/Preventive Actions Procedure	Rev 01, 22/05/17
IP-11	Internal Audit Procedure	Rev 01, 22/05/17
IP-12	Management Review Procedure	Rev 01, 22/05/17
IP-13	Control of Contractors/Visitors Procedure	Rev 01, 22/05/17
IP-14	Health & Safety & Environmental Monitoring	Rev 01, 22/05/17
IP-15	Emergency Preparedness & Response Procedure	Rev 01, 22/05/17
IP-16	Fire Prevention Procedure	Rev 01, 22/05/17
IP-17	Bin Washing Procedure	Rev 01, 22/05/17
IP-18	Accident Prevention Procedure	Rev 01, 22/05/17
IP-19	Fuel Procedure for Tanks & Mobile Plant	Rev 01, 22/05/17

**Safety Procedures - SP**

SP-01	Permit to Work Procedure	Rev 01, 22/05/17
SP-02	Maintenance & Calibration Procedure	Rev 01, 22/05/17
SP-03	Mobile Plant Procedure	Rev 01, 22/05/17
SP-04	Fork Truck Procedure	Rev 01, 22/05/17
SP-05	Operation of Fixed Plant Procedure	Rev 01, 22/05/17
SP-06	Lock Out / Tag Out Procedure	Rev 01, 22/05/17
SP-07	Health & Safety Notification Procedure	Rev 01, 22/05/17
SP-08	MSW Shredder routine Maintenance & Clearing of Blockages Procedure (SCGT)	Rev 01, 22/05/17
SP-09	Weighbridge & Tipping Procedure (SCGT)	Rev 01, 22/05/17
SP-10	Cleaning of Washing Bay (Greenogue)	Rev 01, 22/05/17





<b>Doc. No.: Control</b>	<b>Revision No.: As Shown</b>	<b>Issue Date: As Shown</b>
<b>Approved By:</b>	David Naughton – <i>Group Environmental Manager</i>	<b>Page 2 of 5</b>
	Joe Nicholson – <i>Group H&amp;S Manager</i>	

<b>Environmental Procedures - EP</b>		
EP-01	Office Waste & Energy Management Procedure	Rev 01, 22/05/17
EP-02	Decommissioning and Aftercare Procedure	Rev 01, 22/05/17
EP-03	Environment Communications Procedure	Rev 01, 22/05/17
EP-04	Waste Permits & Licences Procedure	Rev 01, 22/05/17
EP-05	Waste Acceptance Procedure	Rev 01, 22/05/17
EP-06	Unacceptable Waste Procedure	Rev 01, 22/05/17
EP-07	Waste & Material Storage Procedure	Rev 01, 22/05/17
EP-08	Waste Processing Procedure	Rev 01, 22/05/17
EP-09	Site Infrastructure Procedure	Rev 01, 22/05/17
EP-10	Nuisance Management Procedure (Site Specific)	(Site Specific) Rev 01, 22/05/17
EP-11	Civic Amenity Site Procedure	Rev 01, 22/05/17

<b>Doc. No.:</b> Control	<b>Revision No.:</b> As Shown	<b>Issue Date:</b> As Shown
<b>Approved By:</b>	Malcolm Dowling – Group Compliance Manager	<b>Page 3 of 5</b>

**Amendment History**

Date	Amendment No.	Procedure No:	Revision No:	Comment	Authorised By
05.07.10	01	All	01	Initial Issue	M.D & O.C
13.09.10	02	EP-03	02	Issue of Incident Reports	M.D
20.09.10	03	IP-10	02	Env issues not logged on WIMS Database	M.D
29.10.10	04	IP-13	02	Use of M&M equipment by contractors	M.D & O.C
29.10.10	05	IP-14	02	Use of M&M equipment by contractors	M.D & O.C
29.10.10	06	SP-02	02	Inclusion of Maintenance Schedule	M.D & O.C
05.11.10	07	IP-04	02	Inclusion of other requirements	S.B & O.C
01.02.11	08	SP-08	01	Inclusion of new procedure	O.C
01.02.11	09	IP-10	03	Inclusion of SP-08	O.C
01.02.11	10	IP-15	02	Removal of SF-022	O.C
01.02.11	11	Contents	As shown	EP-10 Site Specific	M.D & O.C
01.02.11	12	IP-06	02	Addressing Agency Staff needs	M.D & O.C
01.02.11	13	Circ List	02	Amendment to document control	M.D & O.C
04.04.11	14	SP-02	03	Inclusion of Site Specific Maintenance schedules	O.C
07.06.11	15	IP-11	02	Inclusion of H&S & Env Internal Audit Schedules	M.D & O.C
14/09/11	16	EP-02	02	Inclusion of decommissioning of plant/equipment	S.B
15/09/11	17	IP-09	02	Inclusion of Statutory Inspections	O.C
01/12/11	18	SP-09	01	Inclusion of new procedure for SCGT	O.C
01/12/11	19	SP-10	01	Inclusion of new procedure for SCGT	O.C
03/05/12	20	SP-01	02	Amendment to remove SF 028	O.C
05/05/12	21	SP-11	01	Inclusion of a new procedure for Greenogue	O.C
28/05/12	22	IP-11	03	General Amendments to internal audit procedure	M.D & O.C
08/06/12	23	IP-13	03	Grammatical amendment	M.D & O.C
15/04/13	24	IP-06	03	Agency staff – sign-off record sufficient proof of training. TMS optional	M.D & O.C

<b>Doc. No.:</b> Control	<b>Revision No.:</b> As Shown	<b>Issue Date:</b> As Shown
<b>Approved By:</b>	Malcolm Dowling – Group Compliance Manager	<b>Page 4 of 5</b>

Date	Amendment No.	Procedure No:	Revision No:	Comment	Authorised By
30/06/13	25	IP-16	01	Inclusion of new procedure	M.D.
09/09/13	26	IP-03	02	Use of Scannell Software Solutions (EnviroManager) instead of IF-03A	M.D & O.C
09/09/13	27	IP-04	30	Use of Scannell Software Solutions (EnviroManager) instead of IF-03A	M.D & O.C
09/09/13	28	IP-05	02	Use of Scannell Software Solutions (EnviroManager) instead of IF-03A	M.D & O.C
16/10/13	29	EP-03	03	Introduction of EPA ALDER Portal	K.B
28/04/14	30	All EP's & IP's	01	Change of Company name and review of all Integrated and Env procedures	M.D & O.C
28/04/14	31	SP's	01	Change of Company name and review of all safety procedures including re-numbering & deletion of Motor Claim Notification Procedure – SP 08	O.C
06/05/15	32	EP-09	02	Ref to new form EF-11 added	SS
21/01/16	33	IP-05/IP-07/IP-12	02	Meeting frequency refs updated	SS
14/11/16	34	IP-18	02	Amended as per EPA instruction	SS
11/01/17	35	IP-19	01	New addition	SS
22/05/17	36	All EP's, SP's & IP's	01	Review of all procedures	DN & JN



<b>Doc. No.:</b> Control	<b>Revision No.:</b> As Shown	<b>Issue Date:</b> As Shown
<b>Approved By:</b>	Malcolm Dowling – Group Compliance Manager	<b>Page 5 of 5</b>

**Circulation List**

The Integrated Procedures Manual is a controlled document. Copies of the Procedures Manual are available as follows;

<b>Copy Number</b>	<b>Holder</b>
1 (Master Copy)	Group EHS Managers
2	Greenstar EnviroManager
3	Greenstar Intranet – Electronic Copy