

 **Panda**  
**An Animal for Recycling**

*Site: Cappagh Road, Finglas, Dublin 11*

*Waste Licence Number W0261-02*

*Annual Environmental Report*

*01<sup>st</sup> January 2017 – 31<sup>st</sup> December 2017*

Date	Status	Prepared By	Reviewed By
27/03/2018	Draft	Bebhinn Brennan	David Naughton
31/03/2018	Final	Bebhinn Brennan	David Naughton

## Table of Contents

Table of Contents .....	2
1. Introduction.....	5
1.1 Company details.....	5
1.2 Management Structure .....	5
1.3 Financial Provision .....	6
1.4 Environmental Policy.....	6
1.5 Activities.....	7
1.6 Waste Activities carried out at the Facility.....	7
1.7 Water Usage:.....	8
2. Summary Information.....	8
2.1 Waste Received.....	8
2.2 Waste acceptance and dispatch summary .....	9
2.3 Waste Recovery Reports.....	9
2.4 Summary report on emissions and interpretation of environmental monitoring ....	10
2.4.1 <i>Surface Water</i> .....	11
2.4.2 <i>Dust Emissions</i> .....	11
2.4.3 <i>Noise Emissions</i> .....	12
2.4.5 <i>Bund, pipe and underground storage tanks integrity</i> .....	13
2.4.6 <i>Summary of resource and energy consumption</i> .....	14
2.4.7 <i>Water</i> .....	14
2.5 Site infrastructure.....	14
2.5.1 <i>In-place</i> .....	14
2.5.2 <i>Planned Infra-structure</i> .....	15
2.6 Progress Report on Proposals Developed to Minimise Water Demand & Trade	
Effluent Discharge .....	15
2.7 PRTR Emission.....	15
3. Environmental objectives and targets – 2017 and 2018. ....	16
3.1 Summary of reported incidents and complaints.....	18
3.1.1 <i>Reported Incidents Summary</i> .....	18
3.1.2 <i>Complaints:</i> .....	18
3.2 Review of nuisance controls .....	19

---

3.2.1 Odour .....	19
3.2.2 Noise .....	19
3.2.3 Dust .....	19
3.2.4 Vermin.....	19
3.2.5 Flies.....	19
3.2.6 Birds.....	20
3.2.7 Litter.....	20
4.0 Development of Procedures on Site.....	20
5.0 Pollution Emission Register.....	20
6.0 Report on Programme for Public Information .....	20
Appendix A.....	22
Appendix B.....	23
Appendix C.....	24
Appendix D.....	26

## 1. Introduction

Panda were granted the EPA Waste Licence W0261-02 on the 11<sup>th</sup> February 2015, replacing the previous licence W0261-02 issued on the 31<sup>st</sup> August 2010. Panda are licenced to accept and process 250,000 tonnes per annum upon completion of necessary infrastructure. Appendix A illustrates the current site layout.

### 1.1 Company details

Licence No:	W0261-02
Name:	Nurendale
Address:	Cappagh Road, Finglas, Dublin 11.
Telephone Number:	1890 626262
Fax Number:	046 9024189
Website:	<a href="http://www.panda.ie">www.panda.ie</a>

### 1.2 Management Structure

Eamon Waters is the Managing Director of Panda. Brian McCabe and Noel Waters are company Directors. David Naughton is the Environmental Manager. Kieran Connor is the Operations Manager and Noel Hehir is the Manager on site. Bebhinn Brennan is the EHS officer for the site. There are 120 employees either working directly or indirectly at the facility. Appendix B illustrates the organisational structure of the facility for 2017.

### 1.3 Financial Provision

Costing's for both CRAMP and ELRA has been agreed with the Agency and the surety for financial provision is approved by the Agency.

### 1.4 Environmental Policy

In carrying out our function, Panda acknowledge that our activities impact upon the environment both through routine internal operations and the actions of our staff.

It is Panda's policy to protect the environment during all activities, both on and off-site.

This is achieved by:

- Strategic preparation and implementation of operating procedures (including an emergency response procedure).
- Utilizing BAT (Best Available Technology).
- Actively promoting environmental awareness amongst staff and clients through appropriate training and communication programmes.
- Reduce energy use through effective education and awareness and the installation of energy efficient technology where appropriate.
- Implementing a policy of continuous improvement, by means of targeted objectives. All objectives and targets are monitored and up-dated accordingly.

Panda are committed to complying with all relevant environmental regulations and aim to supply a safe, competitive and sustainable service with specific regards to the surrounding environment.

### 1.5 Activities

Under the Industrial Emissions licence W0261-02, Panda conducts the following activities at Cappagh Road, Cappogue, Finglas, Dublin 11:

Recovery, or a mix of recovery and disposal, of non-hazardous waste with a capacity exceeding 75 tonnes per day involving one or more of the following activities, (other than activities to which the Urban Waste Water Treatment Regulations 2001 (S.I. No. 254 of 2001) apply):

(ii) Pre-treatment of waste for incineration or co-incineration

and

The recovery or disposal of waste in a facility, within the meaning of the Act of 1996, which facility is connected or associated with another activity specified in this Schedule in respect of which a licence or revised licence under Part IV is in force or in respect of which licence under the said Part is or will be required.

Panda provide a waste collection service for the domestic, commercial and industrial sectors throughout Ireland. In 2016 Panda were awarded “The Waste Collection operator of the year (Large)” in the Repak Pakman Awards.

The normal facility operating hours are 6am-6pm (Monday-Friday) & 6am-1pm (Saturdays). The facility is licensed to accept non-hazardous wastes only.

### 1.6 Waste Activities carried out at the Facility

Waste is accepted and dispatched at the facility and is weighed using weighbridge software “WIMS”. Panda operates two buildings for waste acceptance. The facility is primarily used as a transfer facility. Source segregated cardboard, plastic & hangers are accepted in Building A1 and A2 and commercial and domestic dry mixed recyclables, mixed solid waste and brown bin waste are accepted in A2. Where the Mixed Solid

---

Waste and brown bin is accepted, the building is maintained under negative air pressure with the extracted air being treated in an Odour Control Unit.

Source segregated baled cardboard, baled plastic and boxed plastic hangers are also accepted for bulking up from Dunnes Stores collections nationwide.

There is a dual weighbridge for incoming and outgoing waste.

#### 1.7 Water Usage:

Water for dust suppression, office and amenities use is taken from a well. Water for firefighting equipment i.e. hose reels and stand pipes is taken from public supply.

Water usage on site consists of:

- In-house road sweeper (daily visits).
- Dust suppression sprayers in the shed and on the South-western external side of shed (as required)
- Hoses on site for dust suppression.
- Fire Fighting equipment.

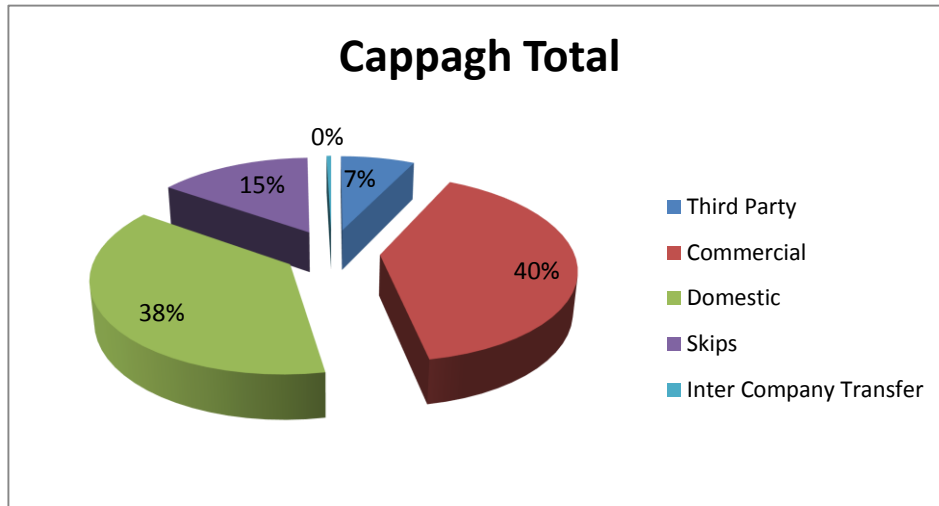
## **2. Summary Information**

### 2.1 Waste Received

The waste received at the facility from the 1<sup>st</sup> January 2017 to the 31<sup>st</sup> December 2017 was 153337.93 tonnes. From the pie chart (Fig 1) it is evident that domestic and commercial wastes are the largest sources of Panda's waste acceptance.



**Fig. 1:** Waste Collected by Panda by Customer profile.



## 2.2 Waste acceptance and dispatch summary

See Appendix C for the breakdown of the different waste accepted at the facility and of waste removed off site by EWC Code.

## 2.3 Waste Recovery Reports

To contribute to the Landfill Directive, Panda operates various systems to maximise recovery and recycling with most processing being carried out in the headquarters' facility.

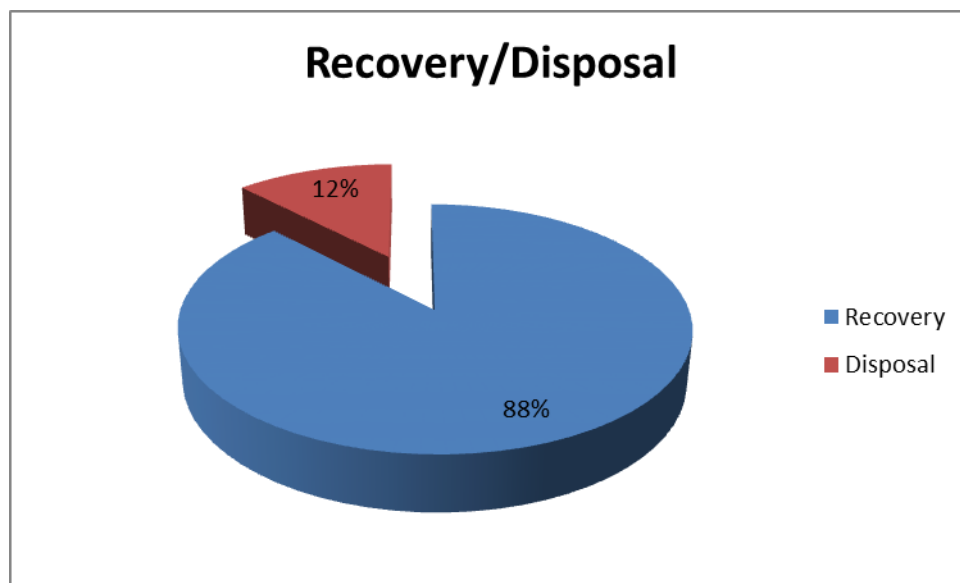
Panda applied to the Agency for a review the current Waste Licence (W0140-04) for the Beauparc facility in September 2009. This review was submitted to the Agency, so that Panda can produce a SRF/RDF product from the residual waste previously sent to Landfill. Panda also reviewed the licence for the purpose of constructing an Anaerobic

Digestion/Composting plant. Panda have rolled out a source segregated collection service for biodegradable waste for both household and commercial customers.

Panda process the mixed C&D waste in the Beuparc facility in building 2, this includes a shredder, trommel, magnet, wind shifter and a picking line so as to divert as much C&D waste away from landfill as possible in order to comply with “A Resource Opportunity, 2012” for landfill diversion. To date the processing of C&D Waste has been extremely successful with the majority of the residual being processed into Solid Recovered Fuel.

Fig. 2 details the recovery rates of waste leaving Panda’s facility in 2017.

**Fig. 2:** Outgoing destination recovery rate.



#### 2.4 Summary report on emissions and interpretation of environmental monitoring

Under Schedule C of the licence W0261-02, Panda are required to monitor storm water emissions, BMW content of municipal waste dispatched to landfill (Frequency-as specified by the Agency), noise and ambient air monitoring (Dust). The following sub-headings detail the results from independent laboratories of the different parameters and the emission limit values ELV’s set by the EPA and any complaints and incident that may have occurred during the year.

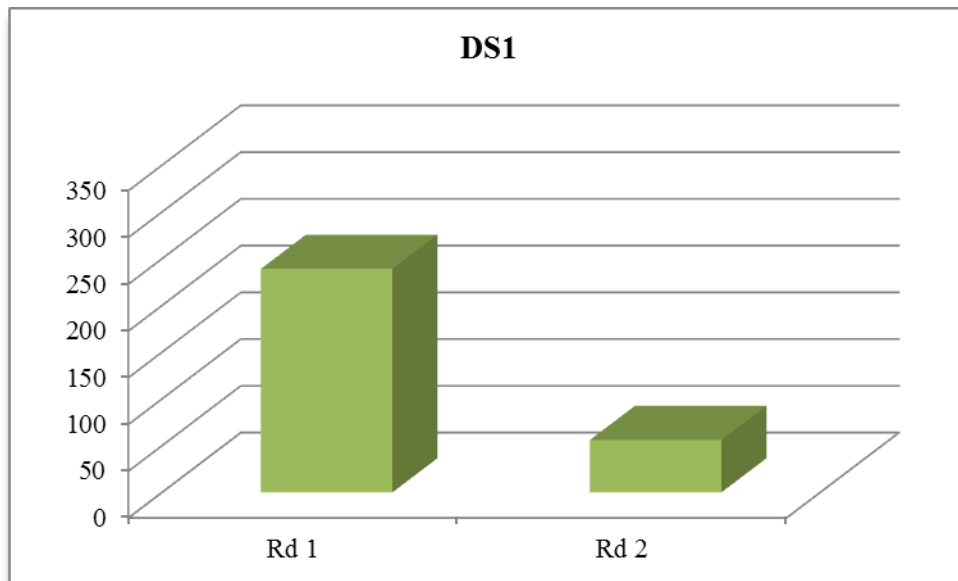
### 2.4.1 Surface Water

Storm water passes through a silt trap and oil interceptor prior to being discharged to the storm water network, which ultimately discharges into a tributary of the Tolka River. The surface water monitoring point is located at the south-eastern corner of the facility at the co-ordinates X/E 310429 Y/N 240420 (SW1).

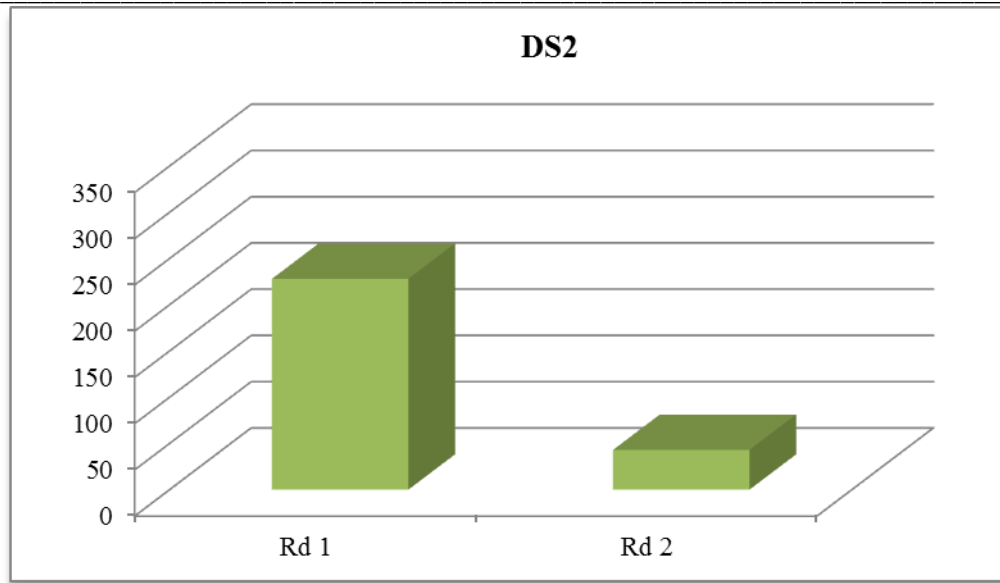
### 2.4.2 Dust Emissions

As per schedule B5 for dust deposition limits, there are currently two sampling locations (AD1 and AD2). Monitoring is required bi-annually on site. A dust suppression unit was installed in the shed to ensure dust emissions from the tipping, sorting and reloading are kept to a minimum. Figs 3&4 illustrate dust recordings for 2017.

**Fig. 3:** Dust emission results for DS1 (AD1)



**Fig. 4:** Dust emission results for DS2 (AD2)



As per Schedule B.5, the dust deposition limit for the site is 350 mg m<sup>-2</sup> d<sup>-1</sup>. Both DS1 and DS2 are well within licenced ELV's.

#### 2.4.3 Noise Emissions

Noise emissions are monitored according to Schedule B.4 and the emission limit values (ELV) set out in Schedule C.5 of the licence. An independent competent consultant has been commissioned to conduct the noise sampling for the facility. Tables 1 - 3 detail results of noise monitoring conducted on the 9<sup>th</sup> June 2017.

**Table 1.** Day- time noise emissions 2017 (Intervals of 30 minutes)

Location	Time	Leq	L10	L90	Comments
AN1	15.00-17.30	54.6	57.4	50.5	Noise from facility less than L50 of 52dBA. Other non Panda noise sources close by.
AN2	16.00-18.30	58.7	62.7	44.8	Noise from waste facility less than L50 of 45dBA.
ANSL1	16.00-19.00	70.1	74.5	54.6	Mainly road traffic noise and waste facility at less than Lmin of 44.9dBA.

ANSL2	19.30- 20.30	71.8	76.2	56.8	Mainly road traffic noise and waste facility less than Lmin of 50.0dBA
-------	-----------------	------	------	------	---

**NB Location of ANSL1 and ANSL2 are alongside the busy road traffic route**

**Table 2.** Evening- time noise emissions 2017 (Intervals of 30 minutes)

Location	Time	Leq	L10	L90	Comments
AN1	19.00- 20.30	52.2	55.1	47.9	Noise from waste facility less than 47.9dBA - mainly road traffic.
AN2	19.00- 20.30	54.6	59.00	41.90	Noise from waste facility less that L50 of 47.7dBA – mainly road traffic.
ANSL1	19.00- 20.30	66.1	66.6	51.50	Road traffic noise –no activity audible off- site at any NSL
ANSL2	19.30- 20.00	70.40	74.50	53.50	Road traffic noise –no activity audible off- site at any NSL

**Table 3.** Night- time noise emissions 2017 (intervals of 30 minutes)

Location	Time	Leq	L10	L90	Comments
AN1	23.00 – 24.00	52.3	53.4	46.4	Road traffic noise and fan on nearby site – no activity on site.
AN2	23.00 – 24.00	50.1	52.8	42.1	Road traffic noise – no activity on site
ANSL1	23.00	57.9	57	46.90	Road traffic noise –no activity on site
ANSL2	23.00	55.3	57.1	45.4	Road traffic noise –no activity on site

#### *2.4.5 Bund, pipe and underground storage tanks integrity*

The integrity and water tightness of all underground pipes, all tanks, bunding structures and containers and their resistance to penetration by water and other materials is required to be carried out every three years and thereafter and reported to the Agency. The pipeline and UST integrity was tested in Q3 of 2015. The integrity of underground pipes,

tanks was tested and found to be compliant. Testing was carried out of the bunds in January 2016 and again was found to be compliant.

#### *2.4.6 Summary of resource and energy consumption*

**Table 4:** Summary of Energy Consumption from January 2017 to December 2017.

Resource	
Gas Oil	71924 Litres
Electricity	489034 kWh

#### *2.4.7 Water*

Dust control and amenity water is obtained from the well located off site. Firefighting water is taken from public supply.

### 2.5 Site infrastructure

The following are details on infrastructure in the facility.

#### *2.5.1 In-place*

The current site infrastructure is outlined below in List 1. List 2 details the waste processing equipment used on site.

**List 1:** Current site infrastructure

1. Offices
2. Dual Weighbridge.
3. Two x Waste processing building
4. One x Dust suppression system
5. Ancillary ESB building
6. Canteen & toilets.
7. Water Attenuation Tank
8. Oil Interceptor
9. Fuel Depot
10. Fencing around the site

---

11. 1 x odour Control Unit

**List 2: Waste processing equipment**

5 x Forklifts

2 x Bollergraf Baler

1 x Multisweep

1 x Volvo Loading Shovel

There is sufficient back up within the group if any of the plant listed breaks down.

*2.5.2 Planned Infra-structure*

It is anticipated that the concrete yards and carpark at the western area of the facility will be completed by the end of 2018.

2.6 Progress Report on Proposals Developed to Minimise Water Demand & Trade Effluent Discharge

To minimise the water demand on site, Panda are investigating collecting the rainwater from the roof and using this for dust suppression around the yard.

2.7 PRTR Emission.

Panda's PRTR emission return is provided in Appendix D.

**3. Environmental objectives and targets – 2017 and 2018.**

No	Objective & Target	Method of Achievement	Responsibility	2017 Programme	Complete in 2017	2018 Programme
1	<b>Assess the Effectiveness of Nuisance Control Procedures</b>	Continually review and assess all nuisance control procedures to ensure minimal impact on surrounding area	Environmental Manager/ EHS Officer	Continuous	Continuous	Continuous
		Ensure yards are cleaned at the end of each working day	Operatives	Continuous	Continuous	Continuous
2	<b>Prevent Water Pollution from Run-Off</b>	Ensure all gullies are maintained and regularly cleaned	EHS Officer/ Operatives	Continuous	Continuous	Continuous
		Ensure that levels in the trade effluent tank is maintained at an appropriate height	Facility Manager/Operatives	Continuous	Continuous	Continuous
3	<b>Assess &amp; Review Resource &amp; Energy Consumption at the site</b>	Carry out an energy audit on the site	Environmental Manager	Reviewed July 17		Review July' 18
4	<b>Maintain and Develop the Environmental Management System</b>	Maintain EMS Documentation on site	Environmental Manager / EHS Officer	Continuous	Continuous	Continuous
		Update procedures to reflect operational and control changes				
5	<b>Review and Update the Site Specific EMS</b>	Implement a plan to review and update the EMS for the site.	EHS Officer	Dec ' 17		Dec '18
6	<b>Implement a training programme for all staff</b>	Identify staff training requirements and provide relevant training	EHS Officer	December '17		Ongoing
7	<b>Assess Waste Acceptance Procedures for Casual Customers</b>	Have all casual customers sign waste collection permit exemption indemnity letters.	Weighbridge Management	Started Q1 2017	Completed in Q4 2017	
8	<b>Environmental Monitoring</b>	Implement the Environmental Monitoring Programme specified in the Waste Licence	Environmental Manager/EHS Officer	Continuous	Continuous	Continuous



	<b>Objective &amp; Target</b>	<b>Method of Achievement</b>	<b>Responsibility</b>	<b>2017 Programme</b>	<b>Complete in 2017</b>	<b>2018 Programme</b>
		Investigate and incidences of emission limit values	Environmental Manager/EHS Officer	Continuous	Continuous	Continuous
<b>9</b>	<b>To control any emergencies that may arise at the facility</b>	Review and train all staff in the Emergency Response Procedure	Environmental Manager/EHS Officer	Continuous Training	Continuous Training	Continuous Training
<b>10</b>	<b>Ensure lighting in waste handling buildings provide sufficient lighting so as to assess incoming waste</b>	Clean all light bulbs and covers in waste handling buildings	Environmental Manager/ Yard Manager	Completed August 2017		Review Q3 2018
<b>11</b>	<b>Office Recycling</b>	Continuation of office recycling	Office Manager/ Environmental Department	Continuous	Continuous	Continuous

### 3.1 Summary of reported incidents and complaints

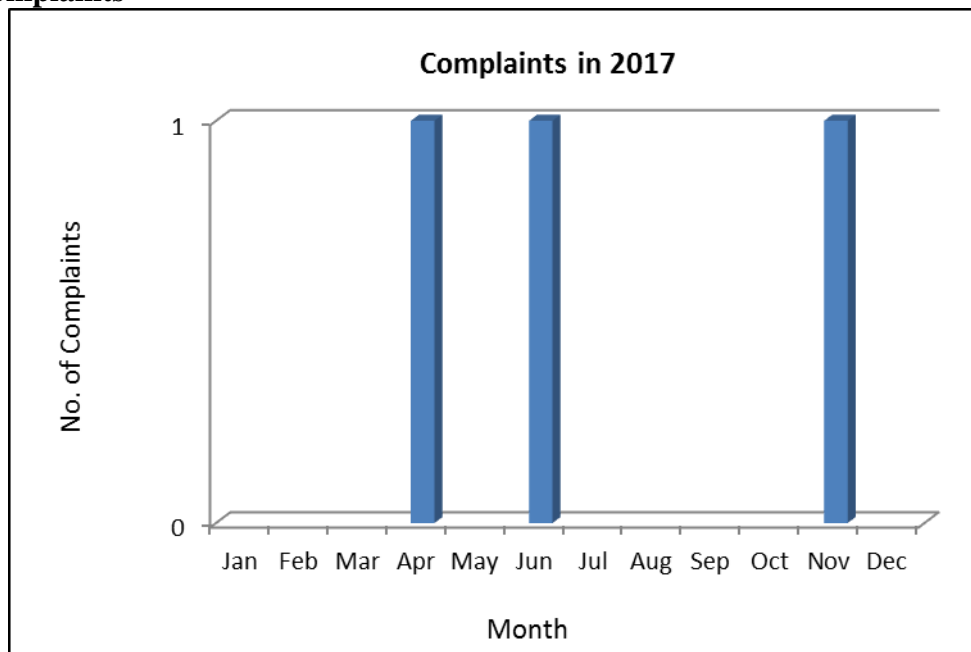
#### 3.1.1 Reported Incidents Summary

*Fire in Trailer on Snugborough Road:* Tarrant trailer was loaded in Cappagh, and when on the Snugborough Road the driver noticed a fire in the trailer and called Dublin Fire Brigade. Fire was quenched on roadside and trailer brought back to Cappagh yard. DMR affected was tipped into loading pit and hosed down, then loaded into a RORO skip and watched all night to ensure fire was completely out. The incident was fully investigated and closed out. No significant environmental damage occurred.

#### 3.1.2 Complaints:

Fig. 5 illustrates complaints either made directly to the Agency or to Panda's facility for each month during 2017. There were a total of 3 complaints made in 2017, directly to Panda. The final complaint was elevated to the Agency after the initial complaint to Panda. Complaints are thoroughly investigated and closed out in a timely fashion.

**Fig. 5: Complaints**



## 3.2 Review of nuisance controls

### *3.2.1 Odour*

Odour emissions from the odorous waste accepted at the facility is controlled by way of maintaining the building under negative air pressure with the extracted air being treated in the Odour Control Unit.

Each day, the Facility Manager and EHS Officer conduct an inspection of the site. Odour nuisances are included on this inspection.

### *3.2.2 Noise*

The monitoring results showed that noise is not a nuisance, as only minimal plant operates on site.

### *3.2.3 Dust*

A dust suppression system is installed in the shed and on the external (South-western side) of the building. A multisweep unit is on site and used regularly throughout the day for cleaning and is fitted with spray bars for dust suppression. Fire hoses are also available to spray water on concreted yards as required.

### *3.2.4 Vermin*

A file on vermin control is maintained in the office. A sub-contractor is used to control any vermin on site.

### *3.2.5 Flies*

Good housekeeping practices are used to prevent fly infestations. The yard is kept clean using a road sweeper and all waste for disposal is removed from the facility within 48 hours, or 72 hours in the case of a bank holiday weekends.

---

### *3.2.6 Birds*

In order to avoid having birds as a nuisance, litter control is practised at all times, this includes regular litter patrols.

### *3.2.7 Litter*

A designated member of staff carries out litter inspections of the facility twice daily and gathers any litter deposited.

## **4.0 Development of Procedures on Site**

The Emergency Response Procedure (ERP) was reviewed and amended to reflect the changes of the company and update useful contact telephone numbers. A review of all other site procedures was also carried out.

## **5.0 Pollution Emission Register**

After consulting the PERL list Panda are not using any substance that is listed at present.

## **6.0 Report on Programme for Public Information**

Panda have re-developed their website in 2015; one of the features is an Environmental page where the following can be downloaded,

- Facility Licences W0140-04, **W0261-02**, W0263-01, W0039-02, W0238-01 and W0003-03,
- Multi-Regional Waste collection permit (NWCPO-14-11326-03),
- TFS Broker licences,
- Customer Charter,
- Environmental Policy,

Domestic wheelie bin customers can also download their relevant collection calendar and pay bills.

Panda have a news section on the website, with regular updates on collections, offers, etc.

Over the Christmas period 2016 Panda put advertisements in all the local newspapers to inform customers of the schedule of bin collections over the Christmas Period. Panda also issued all domestic customers with a Christmas calendar showing collection days over that period. If there were any change to a domestic route, this would also be advertised in the local media.

In March 2009, Panda commenced SMS messaging to domestic customers regarding their collections. Panda are also encouraging customers to receive email invoicing, thereby reducing dependence on paper invoices and envelopes.

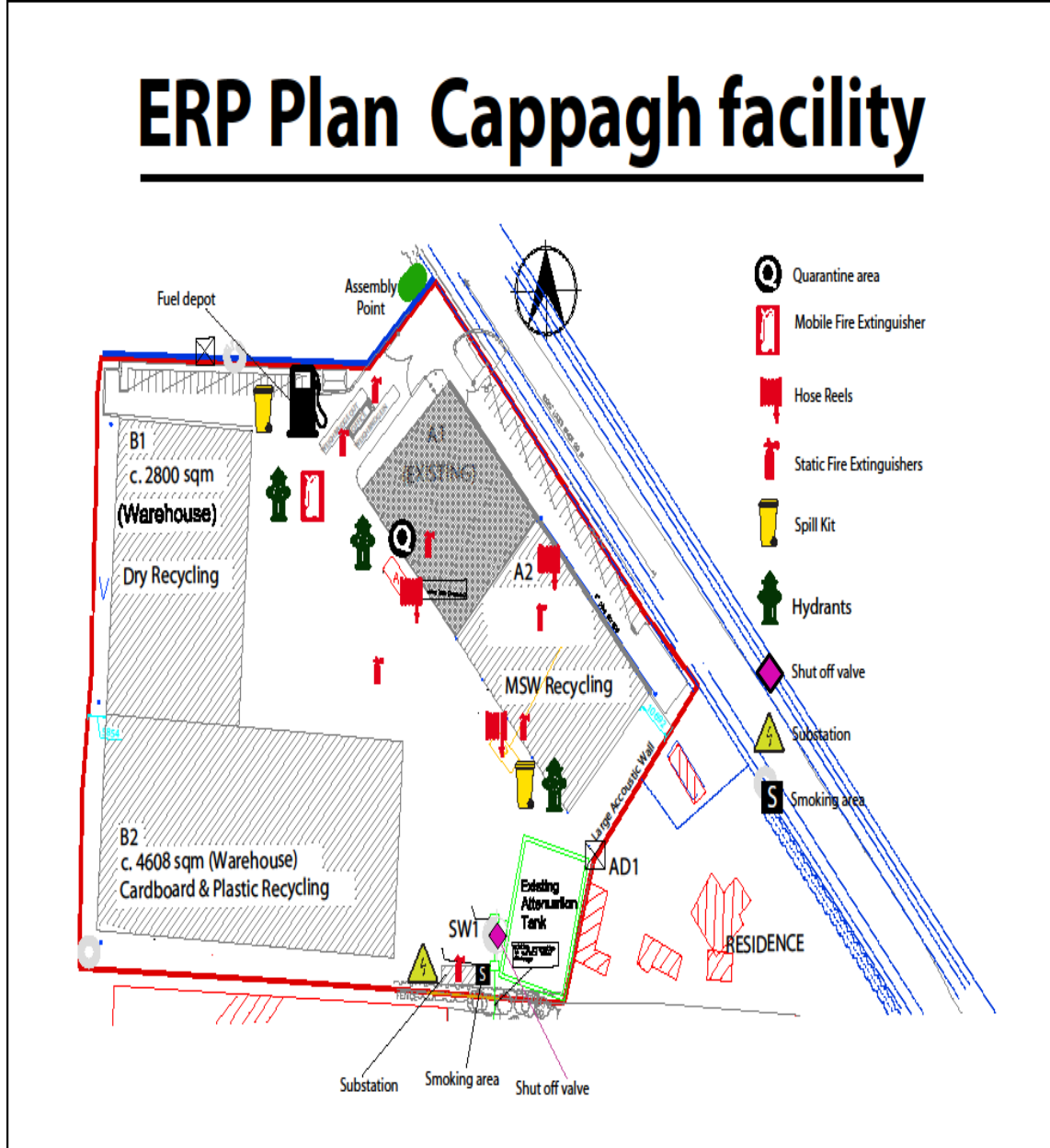
Recycling certificates are issued to customers, on request, so that they can determine their recycling on a weekly/monthly or annual basis.

Advertisements are taken out regularly in the local newspapers informing customers of the services that Panda offer. Tours of the facilities are given to schools and to members of the public upon request. During the reporting period there were no requests from members of the public to inspect any Environmental Records.

The information in the Annual Environmental Report is true and accurate representation of the activities conducted by Panda in 2017.

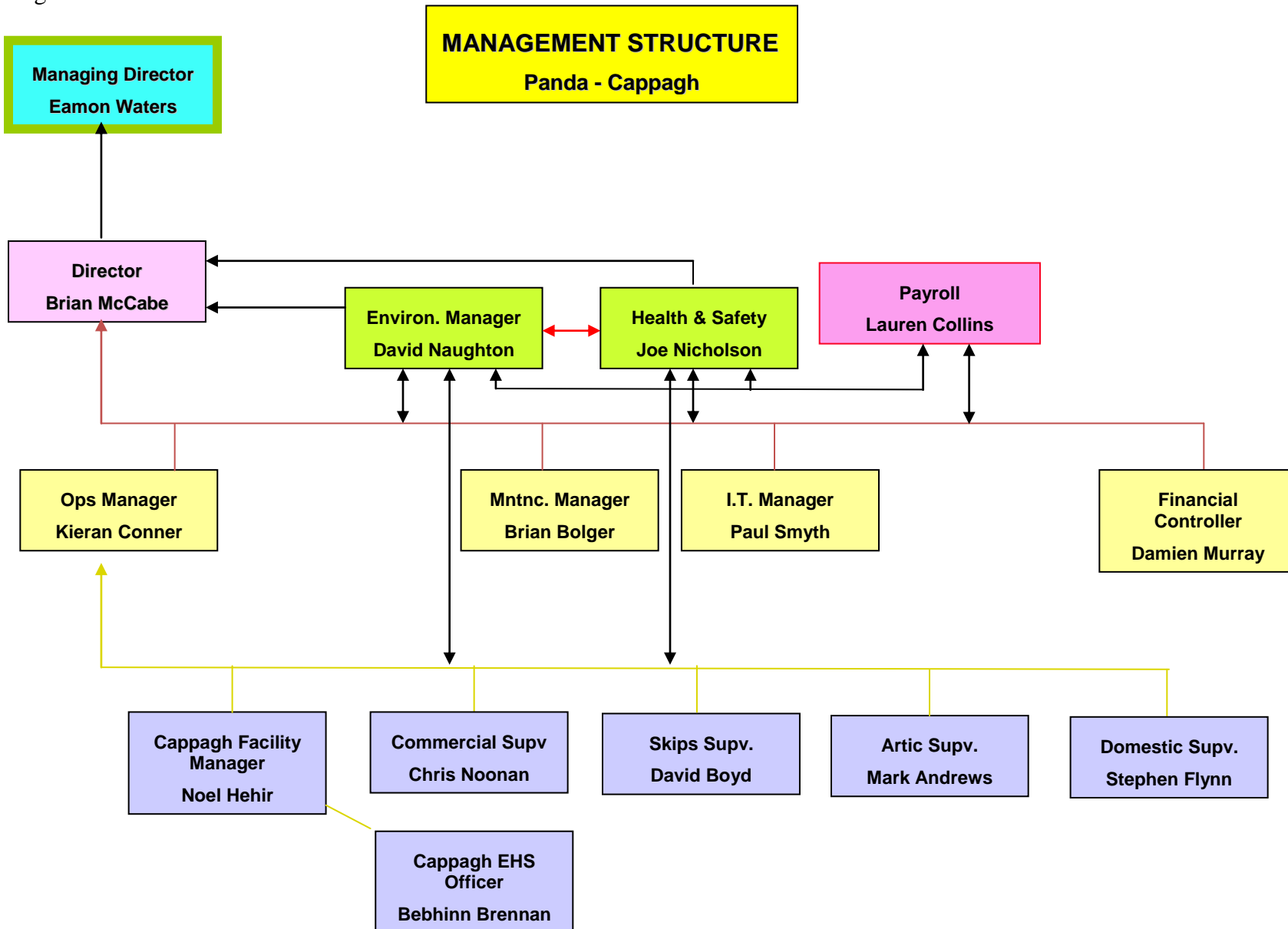
# Appendix A

## Site Layout and ERP Map



# Appendix B

## Organisational Structure



## Appendix C

### Waste Summary

EWC Code	Incoming 2016	Incoming 2017	Outgoing 2016	Outgoing 2017
06 13 99				28.46
13 02 08				0.66
15 01 01	25315.233	29927.71	25317.5	30301.10
15 01 02	2510.98	2953.72	1831.06	2892.60
15 01 03	50.65	53.31		57.12
15 01 04		5.32		
15 01 05		0.30		
15 01 06		12.48		
16 01 03			15.28	15.70
16 05 04				0.34
17 01 07				28.74
17 02 01	2542.49		50.98	
17 02 03		27.30	11.18	
17 04 05	839.91	84.3		27.96
17 05 04	1671.38	209.96	11548.9	4808.38
17 08 02	268.14	64.2		
17 09 04	38735.87	3742.75	214.18	2096.66
19 08 01	2.08	10.22		
19 12 02		1.36	2612.76	
19 12 03			41.569	
19 12 04				1.72
19 12 07			6360.4	1232.32
19 12 12	42.76		18025.34	1434.96
19 12 14			4.58	
20 01 01	11003.45	19344.2	12919.36	19258.10
20 01 02	65.96	11.92		
20 01 08	23020.95	21272.52	22769.82	21166.48
20 01 11	6.2	3.98		
20 01 35			1.7	9.92
20 01 36			64.56	
20 01 38		511.5	537.3	124.02
20 01 39		72.018	354.22	29.00
20 01 40		40.1	246.8	535.49
20 02 01	78.22	7.62	647.68	36.82
20 02 02			236.08	
20 03 01	76793.54	73157.32	88085.5	76708.49



---

20 03 03	9.44			
20 03 07	2910.52	1823.83	40.42	185.56
<b>Total</b>	<b>185867.773</b>	<b>153337.93</b>	<b>191937.169</b>	<b>160980.60</b>

# Appendix D

## PRTR Emissions

| PRTR#: W0261 | Facility Name : Nurendale (Cappagh Road) | Filename : W0261\_2017 PRTR.xls | Return Year : 2017 |



[Guidance to completing the PRTR workbook](#)

# PRTR Returns Workbook

Version 1.1.19

<b>REFERENCE YEAR</b>	2017
-----------------------	------

### 1. FACILITY IDENTIFICATION

Parent Company Name	Nurendale
Facility Name	Nurendale (Cappagh Road)
PRTR Identification Number	W0261
Licence Number	W0261-02

#### Classes of Activity

No.	class name
-	Refer to PRTR class activities below

Address 1	Cappagh Road
Address 2	Finglas
Address 3	Dublin 11
Address 4	
	Dublin
Country	Ireland
Coordinates of Location	-6.33881 53.40272
River Basin District	IEEA
NACE Code	3832
Main Economic Activity	Recovery of sorted materials
<b>AER Returns Contact Name</b>	Bebhinn Brennan
<b>AER Returns Contact Email Address</b>	bebhinn.brennan@greenstar.ie
<b>AER Returns Contact Position</b>	EHS Officer
<b>AER Returns Contact Telephone Number</b>	1890626262
<b>AER Returns Contact Mobile Phone Number</b>	1890626262
<b>AER Returns Contact Fax Number</b>	0469024189
<b>Production Volume</b>	0.0
<b>Production Volume Units</b>	
<b>Number of Installations</b>	0
<b>Number of Operating Hours in Year</b>	0
<b>Number of Employees</b>	120
<b>User Feedback/Comments</b>	Waste variance is due to the nature of the waste accepted. Waste volumes are not consistent from year to year.
<b>Web Address</b>	www.panda.ie

1.1 RELEASES TO AIR [Link to previous years emissions data](#) | PRTR# : W0261 | Facility Name : Nurendale (Cappagh Road) | Filename : W0261\_2017 PRTR.xls | Return Year : 2017 | 31/03/2018 08:23

**SECTION A : SECTOR SPECIFIC PRTR POLLUTANTS**

RELEASES TO AIR				Please enter all quantities in this section in KGs				
No. Annex II	POLLUTANT Name	METHOD		ADD EMISSION POINT		QUANTITY		
		M/C/E	Method Code	Designation or Description	Emission Point 1	T (Total) KG/Year	A (Accidental) KG/Year	F (Fugitive) KG/Year
					0.0	0.0	0.0	0.0

ADD NEW ROW | DELETE ROW \* \* Select a row by double-clicking on the Pollutant Name (Column B) then click the delete button

**SECTION B : REMAINING PRTR POLLUTANTS**

RELEASES TO AIR				Please enter all quantities in this section in KGs				
No. Annex II	POLLUTANT Name	METHOD		ADD EMISSION POINT		QUANTITY		
		M/C/E	Method Code	Designation or Description	Emission Point 1	T (Total) KG/Year	A (Accidental) KG/Year	F (Fugitive) KG/Year
					0.0	0.0	0.0	0.0

ADD NEW ROW | DELETE ROW \* \* Select a row by double-clicking on the Pollutant Name (Column B) then click the delete button

**SECTION C : REMAINING POLLUTANT EMISSIONS (as required in your Licence)**

RELEASES TO AIR				Please enter all quantities in this section in KGs						
Pollutant No.	Dust	Name	METHOD		ADD EMISSION POINT		QUANTITY			
			M/C/E	Method Code	Designation or Description	DS1	DS2	T (Total) KG/Year	A (Accidental) KG/Year	F (Fugitive) KG/Year
						0.11	0.1	0.21	0.0	0.0

ADD NEW ROW | DELETE ROW \* \* Select a row by double-clicking on the Pollutant Name (Column B) then click the delete button

4.2 RELEASES TO WATERS [Link to previous years emissions data](#) | PRTR# : W0261 | Facility Name : Nurendale (Cappagh Road) | Filename : W0261\_2017 PRTR.xls | Return Year : 2017 | 31/03/2018 08:23

**SECTION A : SECTOR SPECIFIC PRTR POLLUTANTS** Data on ambient monitoring of storm/surface water or groundwater, conducted as part of your licence requirements, should NOT be submitted under AER / PRTR Reporting

RELEASES TO WATERS				Please enter all quantities in this section in KGs				
No. Annex II	POLLUTANT Name	METHOD		ADD EMISSION POINT		QUANTITY		
		M/C/E	Method Code	Designation or Description	Emission Point 1	T (Total) KG/Year	A (Accidental) KG/Year	F (Fugitive) KG/Year
					0.0	0.0	0.0	0.0

ADD NEW ROW | DELETE ROW \* \* Select a row by double-clicking on the Pollutant Name (Column B) then click the delete button

**SECTION B : REMAINING PRTR POLLUTANTS**

RELEASES TO WATERS				Please enter all quantities in this section in KGs				
No. Annex II	POLLUTANT Name	METHOD		ADD EMISSION POINT		QUANTITY		
		M/C/E	Method Code	Designation or Description	Emission Point 1	T (Total) KG/Year	A (Accidental) KG/Year	F (Fugitive) KG/Year
					0.0	0.0	0.0	0.0

ADD NEW ROW | DELETE ROW \* \* Select a row by double-clicking on the Pollutant Name (Column B) then click the delete button

**SECTION C : REMAINING POLLUTANT EMISSIONS (as required in your Licence)**

RELEASES TO WATERS				Please enter all quantities in this section in KGs				
Pollutant No.	Name	METHOD		ADD EMISSION POINT		QUANTITY		
		M/C/E	Method Code	Designation or Description	Emission Point 1	T (Total) KG/Year	A (Accidental) KG/Year	F (Fugitive) KG/Year
					0.0	0.0	0.0	0.0

ADD NEW ROW | DELETE ROW \* \* Select a row by double-clicking on the Pollutant Name (Column B) then click the delete button

4.3 RELEASES TO WASTEWATER OR SEWER [Link to previous years emissions data](#) | PRTR# : W0261 | Facility Name : Nurendale (Cappagh Road) | Filename : W0261\_2017 PRTR.xls | Return Year : 2017 | 31/03/2018 08:23

**SECTION A : PRTR POLLUTANTS**

OFFSITE TRANSFER OF POLLUTANTS DESTINED FOR WASTE-WATER TREATMENT OR SEWER				Please enter all quantities in this section in KGs				
No. Annex II	POLLUTANT Name	METHOD		ADD EMISSION POINT		QUANTITY		
		M/C/E	Method Code	Designation or Description	Emission Point 1	T (Total) KG/Year	A (Accidental) KG/Year	F (Fugitive) KG/Year
					0.0	0.0	0.0	0.0

ADD NEW ROW | DELETE ROW \* \* Select a row by double-clicking on the Pollutant Name (Column B) then click the delete button

**SECTION B : REMAINING POLLUTANT EMISSIONS (as required in your Licence)**

OFFSITE TRANSFER OF POLLUTANTS DESTINED FOR WASTE-WATER TREATMENT OR SEWER				Please enter all quantities in this section in KGs				
Pollutant No.	Name	METHOD		ADD EMISSION POINT		QUANTITY		
		M/C/E	Method Code	Designation or Description	Emission Point 1	T (Total) KG/Year	A (Accidental) KG/Year	F (Fugitive) KG/Year
					0.0	0.0	0.0	0.0

ADD NEW ROW | DELETE ROW \* \* Select a row by double-clicking on the Pollutant Name (Column B) then click the delete button

4.4 RELEASES TO LAND [Link to previous years emissions data](#) | PRTR# : W0261 | Facility Name : Nurendale (Cappagh Road) | Filename : W0261\_2017 PRTR.xls | Return Year : 2017 | 31/03/2018 08:23

**SECTION A : PRTR POLLUTANTS**

RELEASES TO LAND				Please enter all quantities in this section in KGs			
No. Annex II	POLLUTANT Name	METHOD		ADD EMISSION POINT		QUANTITY	
		M/C/E	Method Code	Designation or Description	Emission Point 1	T (Total) KG/Year	A (Accidental) KG/Year
					0.0	0.0	0.0

ADD NEW ROW | DELETE ROW \* \* Select a row by double-clicking on the Pollutant Name (Column B) then click the delete button

**SECTION B : REMAINING POLLUTANT EMISSIONS (as required in your Licence)**

RELEASES TO LAND				Please enter all quantities in this section in KGs			
Pollutant No.	Name	METHOD		ADD EMISSION POINT		QUANTITY	
		M/C/E	Method Code	Designation or Description	Emission Point 1	T (Total) KG/Year	A (Accidental) KG/Year
					0.0	0.0	0.0

ADD NEW ROW | DELETE ROW \* \* Select a row by double-clicking on the Pollutant Name (Column B) then click the delete button

5. ONSITE TREATMENT & OFFSITE TRANSFERS OF WASTE									
Please enter all quantities on this sheet in Tonnes									
Transfer Destination	European Waste Code	Hazardous	Quantity (Tonnes per Year)	Description of Waste	Waste Treatment Operation	Method Used		Location of Treatment	Actual Address of Final Destination (i.e. Final Recovery / Disposal Site (HAZARDOUS WASTE ONLY))
						M/C/E	Method Used		
Within the Country	15 01 01	No	50.58	paper and cardboard packaging	R12	M	Weighted	Offsite in Ireland	Irish Packaging Recycling Ltd, W0263-01
Within the Country	15 01 01	No	0.0	paper and cardboard packaging	R12	M	Weighted	Offsite in Ireland	Panda Navan, W0140-03
Within the Country	15 01 01	No	0.0	paper and cardboard packaging	R12	M	Weighted	Offsite in Ireland	Dublin City Council MRF, W0238-01
To Other Countries	15 01 01	No	1290.12	paper and cardboard packaging	R13	M	Weighted	Abroad	Nurendale Broker, IREAG133 rd, Walkinstown, Dublin 12, Ireland
Within the Country	15 01 02	No	0.0	plastic packaging	R12	M	Weighted	Offsite in Ireland	Dublin City Council MRF, W0238-01
Within the Country	15 01 02	No	2851.42	plastic packaging	R12	M	Weighted	Offsite in Ireland	Irish Packaging Recycling Ltd, W0263-01
Within the Country	15 01 03	No	0.0	wooden packaging	R12	M	Weighted	Offsite in Ireland	Conroy Recycling Company Ltd, WFP-WH-2009-0002-01
Within the Country	16 01 03	No	0.0	end-of-life tyres	R1	M	Weighted	Offsite in Ireland	Wilton Waste Recycling Ltd, WFP-CN-10-0005-01(1)
Within the Country	16 01 03	No	11.44	end-of-life tyres mixture of concrete, bricks, tiles and ceramics other than those mentioned in 17	R12	M	Weighted	Offsite in Ireland	Irish Packaging Recycling Ltd, W0263-01
Within the Country	17 01 07	No	0.0	01 06	R12	M	Weighted	Offsite in Ireland	Behans Land Restoration Ltd, W0247-01
Within the Country	17 02 01	No	0.0	wood	R12	M	Weighted	Offsite in Ireland	Nurendale, W0140-03
Within the Country	17 02 01	No	0.0	wood	R12	M	Weighted	Offsite in Ireland	McKinstry, LN/16/16
Within the Country	17 02 03	No	0.0	plastic soil and stones other than those mentioned	R12	M	Weighted	Offsite in Ireland	Irish Packaging Recycling Ltd, W0263-01
Within the Country	17 05 04	No	4341.18	17 05 03	R10	M	Weighted	Offsite in Ireland	Behans Land Restoration Ltd, W0247-01
Within the Country	17 05 04	No	0.0	soil and stones other than those mentioned	R10	M	Weighted	Offsite in Ireland	Murphy Environmental, W0129-01
Within the Country	17 05 04	No	0.0	soil and stones other than those mentioned	R12	M	Weighted	Offsite in Ireland	Nurendale, W0140-03
Within the Country	17 08 02	No	0.0	gypsum-based construction materials other than those mentioned in 17 08 01	R12	M	Weighted	Offsite in Ireland	Nurendale, W0140-03
To Other Countries	17 08 02	No	0.0	gypsum-based construction materials other than those mentioned in 17 08 01	R12	M	Weighted	Abroad	Baron Recycling Ltd, Ni 070049
To Other Countries	17 08 02	No	0.0	gypsum-based construction materials other than those mentioned in 17 08 01	R12	M	Weighted	Abroad	Lavery (Patrick), LN/11/69T
To Other Countries	17 08 02	No	0.0	gypsum-based construction materials other than those mentioned in 17 08 01 mixed construction and demolition wastes other than those mentioned in 17 09 01, 17	R12	M	Weighted	Abroad	MacNabb Bros. Waste Disposal Ltd, LN/09/111M
Within the Country	17 09 04	No	2096.66	09 02 and 17 09 03	R12	M	Weighted	Offsite in Ireland	Nurendale, W0140-03
Within the Country	19 12 02	No	0.0	ferrous metal	R12	M	Weighted	Offsite in Ireland	Multimetals, WFP-WW-09-0014-01
Within the Country	19 12 02	No	0.0	ferrous metal	R12	M	Weighted	Offsite in Ireland	Electrical Waste Management Ltd, WFP-DS-09-0012-01
Within the Country	19 12 02	No	0.0	ferrous metal	R12	M	Weighted	Offsite in Ireland	Nurendale, W0140-03
Within the Country	19 12 02	No	0.0	ferrous metal	R12	M	Weighted	Offsite in Ireland	Wilton Waste Recycling Ltd, WFP-CN-10-0005-01(1)
Within the Country	19 12 03	No	0.0	non-ferrous metal	R12	M	Weighted	Offsite in Ireland	Nurendale, W0140-03
Within the Country	12 03	No	0.0	non-ferrous metal	R12	M	Weighted	Offsite in Ireland	Multimetals, WFP-WW-09-0014-01
Within the Country	19 12 03	No	0.0	non-ferrous metal	R12	M	Weighted	Offsite in Ireland	Wilton Waste Recycling Ltd, WFP-CN-10-0005-01(1)
Within the Country	19 12 03	No	0.0	non-ferrous metal	R4	M	Weighted	Offsite in Ireland	St. Margarets Recycling & Transfer Centre Ltd, WFP-FG-13-0002-01
Within the Country	19 12 04	No	0.0	plastic and rubber	R12	M	Weighted	Offsite in Ireland	Irish Packaging Recycling Ltd, W0263-01
Within the Country	19 12 07	No	0.0	wood other than that mentioned in 19 12 06	R12	M	Weighted	Offsite in Ireland	Acorn Recycling Ltd, W0249-Ballybeg Littleton, Co. Tipperary, Ireland
Within the Country	19 12 07	No	0.0	wood other than that mentioned in 19 12 06	R12	M	Weighted	Offsite in Ireland	Clonmel Waste, WFP-TS-11-0001-01
Within the Country	19 12 07	No	1227.48	wood other than that mentioned in 19 12 06	R12	M	Weighted	Offsite in Ireland	Greenstar Bray, W0053-03
Within the Country	19 12 07	No	0.0	wood other than that mentioned in 19 12 06	R12	M	Weighted	Offsite in Ireland	McKinstry, LN/16/16
Within the Country	19 12 07	No	0.0	wood other than that mentioned in 19 12 06	R12	M	Weighted	Offsite in Ireland	Padraic Thornton Waste Disposal Ltd, WFP-KE-10-061-01
Within the Country	19 12 07	No	0.0	wood other than that mentioned in 19 12 06	R12	M	Weighted	Offsite in Ireland	Nurendale, W0140-03
Within the Country	19 12 07	No	0.0	wood other than that mentioned in 19 12 06	R12	M	Weighted	Offsite in Ireland	Irish Packaging Recycling Ltd, W0263-01
Within the Country	19 12 10	No	0.0	SRF other wastes (including mixtures of materials) from mechanical treatment of wastes other than those mentioned in 19	R1	M	Weighted	Offsite in Ireland	Lagan Cement, P0487
Within the Country	19 12 12	No	1434.96	12 11	R12	M	Weighted	Offsite in Ireland	Nurendale, W0140-03
Within the Country	19 12 12	No	0.0	RDF	R12	M	Weighted	Offsite in Ireland	Panda Navan, W0140-03



Within the Country	03 01	No	4189.54 mixed municipal waste	R12	M	Weighted	Offsite in Ireland	SDCC Bailing Station W0003-03	Ballymount Road, Walkinstown, Dublin 12, Ireland
Within the Country	20 03 01	No	0.0 Dry Recyclables	R12	M	Weighted	Offsite in Ireland	Wilton Waste Recycling Ltd, WFP-CN-10-0005-01(1)	Kiffagh, Crosserlough Ballyja mesduff, Co. Cavan, Ireland Rathdrinagh, Beauparc, Navan, Co. Meath, Ireland
Within the Country	20 03 07	No	128.18 bulky waste	R12	M	Weighted	Offsite in Ireland	Panda Navan, W0140-04	Sarsfield Court Industrial Estate, Glanmire, Co. Cork, Ireland
Within the Country	20 03 07	No	15.26 bulky waste	R12	M	Weighted	Offsite in Ireland	Greenstar Glynntown, W0136-03	Fassaore, Bray, Co. Wicklow, Ireland
Within the Country	20 03 01	No	457.6 mixed packaging	R12	M	Weighted	Offsite in Ireland	Greenstar Bray, W0053-03	Millennium Park, Cappagh Road, Finglas, Dublin 11, Ireland
Within the Country	15 01 02	No	32.92 plastic packaging	R12	M	Weighted	Offsite in Ireland	Greenstar Millennium Park, W0183-01	Millennium Park, Cappagh Road, Finglas, Dublin 11, Ireland
Within the Country	15 01 02	No	3.92 plastic packaging	R12	M	Weighted	Offsite in Ireland	Leinster Environmental, WFP-LH-11-0002-01	Clermont Business Park, Haynestown TD, Haggardstown Dundalk Co. Louth, Ireland
Within the Country	15 01 03	No	57.12 wooden packaging	R12	M	Weighted	Offsite in Ireland	C.J. Sheeran, P0337-01	Shannon Street, Mountrath, Co. Laois, Ireland
Within the Country	16 01 03	No	4.26 end-of-life tyres mixture of concrete, bricks, tiles and ceramics other than those mentioned in 17	R1	M	Weighted	Offsite in Ireland	Greenstar Millennium Park, W0183-01	Millennium Park, Cappagh Road, Finglas, Dublin 11, Ireland
Within the Country	17 01 07	No	28.74 01 06	R12	M	Weighted	Offsite in Ireland	Greenstar Millennium Park, W0183-01	Millennium Park, Cappagh Road, Finglas, Dublin 11, Ireland
Within the Country	17 04 05	No	27.96 iron and steel	R12	M	Weighted	Offsite in Ireland	Greenstar Millennium Park, W0183-01	Millennium Park, Cappagh Road, Finglas, Dublin 11, Ireland
Within the Country	17 05 04	No	soil and stones other than those mentioned 412.42 in 17 05 03	R12	M	Weighted	Offsite in Ireland	Roadstone Limited - Huntstown Quarry, W0277-02	Huntstown Quarry, Kishane and Johnstown Townlands, Finglas, Dublin 11, Ireland
Within the Country	17 05 04	No	soil and stones other than those mentioned 54.78 in 17 05 03	R12	M	Weighted	Offsite in Ireland	Greenstar Millennium Park, W0183-01	Millennium Park, Cappagh Road, Finglas, Dublin 11, Ireland
Within the Country	19 12 04	No	1.72 plastic and rubber	R12	M	Weighted	Offsite in Ireland	Greenstar Millennium Park, W0183-01	Millennium Park, Cappagh Road, Finglas, Dublin 11, Ireland
Within the Country	19 12 07	No	4.84 wood other than that mentioned in 19 12 06	R12	M	Weighted	Offsite in Ireland	Greenstar Millennium Park, W0183-01	Millennium Park, Cappagh Road, Finglas, Dublin 11, Ireland
Within the Country	20 01 38	No	88.5 wood other than that mentioned in 20 01 37	R12	M	Weighted	Offsite in Ireland	Clonmel Waste, WFP-TS-11-0001-01	Laneslown, Clonmel, Co. Tipperary, Ireland
Within the Country	20 01 38	No	13.84 wood other than that mentioned in 20 01 37	R12	M	Weighted	Offsite in Ireland	Greenstar Bray, W0053-03	Fassaore, Bray, Co. Wicklow, Ireland
Within the Country	20 01 38	No	8.28 wood other than that mentioned in 20 01 37	R12	M	Weighted	Offsite in Ireland	Greenstar Millennium Park, W0183-01	Millennium Park, Cappagh Road, Finglas, Dublin 11, Ireland
Within the Country	20 01 40	No	18.12 metals	R12	M	Weighted	Offsite in Ireland	Greenstar Millennium Park, W0183-01	Millennium Park, Cappagh Road, Finglas, Dublin 11, Ireland
Within the Country	20 01 40	No	10.94 metals	R12	M	Weighted	Offsite in Ireland	David Recycling International Ltd, WFP-DS-09-0012-01	Unit 548 Jordanstown Drive, Greenogue Business Park, Rathcoole, Co. Dublin, Ireland
Within the Country	20 03 01	No	20146.19 mixed municipal waste	R1	M	Weighted	Offsite in Ireland	Dublin Waste to Energy Limited, W0232-01	Pigeon House Road, Footleg Peninsula, Dublin 4, Dublin, Ireland
Within the Country	20 03 01	No	233.57 mixed municipal waste	R12	M	Weighted	Offsite in Ireland	Greenstar Millennium Park, W0183-01	Millennium Park, Cappagh Road, Finglas, Dublin 11, Ireland
Within the Country	20 03 01	No	3529.62 mixed municipal waste	R12	M	Weighted	Offsite in Ireland	Greenstar Glynntown, W0136-03	Sarsfield Court Industrial Estate, Glanmire, Co. Cork, Ireland
Within the Country	06 13 99	No	28.46 wastes not otherwise specified	R3	M	Weighted	Offsite in Ireland	Enviro Grind Ltd, WFP-DL-11-0004-01	Fincasahil Donegal Road, Peltigo, Co. Donegal, Ireland
Within the Country	13 02 08	Yes	0.66 other engine, gear and lubricating oils	R9	M	Weighted	Offsite in Ireland	Rita, W185-01	Greenogue Business Park, Rathcoole, Co. Dublin, Ireland
Within the Country	16 05 04	Yes	0.34 halons containing dangerous substances	R12	M	Weighted	Offsite in Ireland	Calor Gas, NI Plastics, WFP-FG-08-002-03	Unit 548 Jordanstown Road, Drimnagh, Dublin 12, Dublin, Ireland
Within the Country	15 01 02	No	4.34 plastic packaging	R12	M	Weighted	Offsite in Ireland	Broder Agnail Limited, IRE/AG117/18	Rosmount Business Park, Dublin 11, Dublin, Ireland
To Other Countries	20 01 01	No	1123.24 paper and cardboard	R13	M	Weighted	Abroad	Broker DS Smith	...
To Other Countries	20 01 01	No	5626.24 paper and cardboard	R13	M	Weighted	Abroad	IRE/G008/17	...
To Other Countries	20 01 01	No	8858.92 paper and cardboard	M	Weighted	Abroad	Broker Vipa, IRE/G195/17	...	
To Other Countries	20 01 01	No	344.28 paper and cardboard	R13	M	Weighted	Abroad	Cellmark, IRE/G466/18	...
To Other Countries	20 01 01	No	229.54 paper and cardboard	R13	M	Weighted	Abroad	Broker Huhtamaki Lurgan Ltd, IRE/G366/17	...
To Other Countries	20 01 01	No	220.68 paper and cardboard	M	Weighted	Abroad	Broker MLM Ltd, IRE/G022/17	...	
To Other Countries	20 01 01	No	1937.2 paper and cardboard	R13	M	Weighted	Abroad	Broker Northwood Recycling, IRE/G282/17	...
To Other Countries	20 01 01	No	187.0 paper and cardboard	R13	M	Weighted	Abroad	Broker Recycling UK Limited, IRE/G069/17	...
To Other Countries	20 01 01	No	731.0 paper and cardboard	R13	M	Weighted	Abroad	Broker Saica Natur UK, IRE/G277/15	...
To Other Countries	15 01 01	No	1017.88 paper and cardboard packaging	R13	M	Weighted	Abroad	Cellmark, IRE/G466/18	...
To Other Countries	15 01 01	No	1423.6 paper and cardboard packaging	R13	M	Weighted	Abroad	Broker Mark Lyndon Paper Ltd, IRE/G021/17	...
To Other Countries	15 01 01	No	3245.62 paper and cardboard packaging	R13	M	Weighted	Abroad	Broker Manwin Environmental Trading, IRE/G027/17	...
To Other Countries	15 01 01	No	480.58 paper and cardboard packaging	R13	M	Weighted	Abroad	Broker MLM Ltd, IRE/G022/17	...
To Other Countries	15 01 01	No	12339.19 paper and cardboard packaging	R13	M	Weighted	Abroad	Broker DS Smith, IRE/G008/17	...
To Other Countries	15 01 01	No	10453.53 paper and cardboard packaging	R13	M	Weighted	Abroad	Broker Vipa, IRE/G195/17	...
Within the Country	20 03 07	No	42.12 bulky waste	R12	M	Weighted	Offsite in Ireland	Greenstar Millennium Park, W0183-01	Millennium Park, Cappagh Road, Finglas, Dublin 11, Ireland