



Site: Ballymount Road, Walkinstown, Dublin 12.

Waste Licence Number W0263-01

Annual Environmental Report

01st January 2017 – 31st December 2017

Table of Contents

Table of Contents	2
1.0 Introduction.....	4
1.1 Company details.....	4
1.2 Management Structure	5
1.3 Financial Provision	5
1.4 Environmental Policy.....	5
1.5 Activities.....	6
1.6 Waste Activities carried out at the Facility.....	6
1.7 Water Usage:.....	7
2.0 Summary Information.....	7
2.1 Waste Received.....	7
2.2 Waste Transferred Off-Site for Disposal or Recovery	8
2.3 Summary report on emissions and interpretation of environmental monitoring	8
2.3.1 <i>Surface Water</i>	8
2.3.2 <i>Dust Emissions</i>	8
2.3.3 <i>Noise Emissions</i>	10
2.3.4 <i>Bund, pipe and underground storage tanks integrity</i>	11
2.3.5 <i>Summary of resource and energy consumption</i>	11
2.3.6. <i>Water</i>	11
2.4 Site infrastructure.....	11
2.4.1 <i>In-place</i>	11
2.5 Progress report on proposals developed to minimise water demand.....	12
2.6 PRTR Emission.....	12
3.0 Environmental objectives and targets	13
3.1 Summary of reported incidents and complaints.....	15
3.1.1 <i>Reported Incidents Summary</i>	15
3.1.2 <i>Complaints:</i>	15
3.2 Review of nuisance controls	15

3.2.1 Odour	15
3.2.2 Noise	15
3.2.3 Dust	15
3.2.4 Vermin.....	15
3.2.5 Flies.....	16
3.2.6 Birds.....	16
3.2.7 Litter.....	16
4.0 Development of Procedures on Site.....	16
5.0 Pollution Emission Register.....	17
6.0 Report on Programme for Public Information	17
Appendix A.....	18
Appendix B.....	19
Appendix C.....	20

1.0 Introduction

Panda were granted the EPA Waste Licence W0263-01 on the 26th January 2011. This replaces the Waste Permit WPR 021/2 issued by South Dublin County Council. Under this licence, Panda will be able to process initially 150,000 tonnes per annum. On the 27th of November 2015 section 76(11) amendment to Industrial Emissions Licence was issued to W0263-01 to be read in conjunction with original licence. Appendix A illustrates the current site layout.

1.1 Company details

Licence No: W0263-01

Name: Irish Packaging Recycling Ltd

Address: Ballymount Road,
Walkinstown,
Dublin 12.

Telephone Number: 01 4602011

Fax Number: 01 4602210

Website: www.panda.ie

1.2 Management Structure

There are 25 employees either working directly or indirectly at the facility. Appendix B illustrates the organisational structure of the facility.

1.3 Financial Provision

Costing's for both CRAMP and ELRA has been agreed with the Agency and the surety for financial provision is being considered by the Agency prior to implementation.

1.4 Environmental Policy

In carrying out our function, IPR/Panda acknowledge that our activities impact upon the environment both through routine internal operations and the actions of our staff.

It is Panda's policy to protect the environment during all activities, both on and off-site.

This is achieved by:

- Strategic preparation and implementation of operating procedures (including an emergency response procedure).
- Utilizing BAT (Best Available Technology).
- Actively promoting environmental awareness amongst staff and clients through appropriate training and communication programs.
- Reduce energy use through effective education and awareness and the installation of energy efficient technology where appropriate.
- Implementing a policy of continuous improvement, by means of targeted objectives. All objectives and targets are monitored and up-dated accordingly.

IPR are committed to complying with all relevant environmental regulations and aim to supply a safe competitive and sustainable service with specific regards to the surrounding environment.

1.5 Activities

Under the waste licence W0263-01, IPR conducts the following activities:

Licensed Waste Recovery Activities, in accordance with the Fourth Schedule of the Waste Management Acts, 1996 to 2010

Class 2.

Recycling or reclamation of organic substances which are not used as solvents (including composting and other biological processes) (P).

Class 3.

Recycling or reclamation of metals and metal compounds.

Class 4.

Recycling or reclamation of other inorganic materials.

Class 13.

Storage of waste intended for submission to any activity referred to in a preceding paragraph of this Schedule, other than temporary storage, pending collection, on the premises where such waste is produced.

IPR accept material from commercial and industrial sectors throughout Ireland. The normal facility operating hours are 6am-5pm (Monday-Friday) & 6am-2pm (Saturdays). The facility is licensed to accept non-hazardous wastes only.

1.6 Waste Activities carried out at the Facility

Material accepted and dispatched at the facility is weighed using Genesys weighbridge software. The facility is used as a baling station. The facility accepts predominantly source segregated paper, cardboard, plastic and hangers. No hazardous waste, putrescible waste or liquid wastes are accepted at the facility.

The material is initially sorted in the facility using Forklifts, Shovel and teleporters, then loaded into one of three balers for baling. The resultant bales are stored for onward movement.

There is a dual weighbridge for incoming and outgoing material.

1.7 Water Usage:

Water for dust suppression and fire-fighting is taken from a holding tank located on a neighbouring paper premises. Water to the office and amenities is taken from municipal supply and is metered by the council.

Water usage in the facility consists of:

- Dust Suppression.
- Fire fighting

2.0 Summary Information

2.1 Waste Received

The waste received at the facility from the 1st January 2017 to the 31st December 2017 was 123397.134 tonnes.

Table 1. Waste received in 2017

EWC Code	Waste Description	Tonnage
20 01 01	Paper and Cardboard	20712.382
20 01 39	Plastic	877.603
20 01 38	Wood	228.638
20 03 01	MMW	1412.107
15 01 01	Paper and Cardboard	87632.119
15 01 02	Plastic Packaging	8302.167
15 01 03	Wood	2333.893
15 01 04	Steel	401.065
16 01 03	Used Tires	1476.08
19 12 07	Processed Wood	19.1
20 01 03	Residual	1.98

2.2 Waste Transferred Off-Site for Disposal or Recovery

See Appendix C (PRTR) for the breakdown of the different destinations used for the waste removed off site by EWC Code.

Table 2: Outgoing destination and recovery rate.

Destination	Tonnage	%
Disposal		0
Recovery	119379.848	100

2.3 Summary report on emissions and interpretation of environmental monitoring

Under Schedule C of the licence W0263-01, IPR are required to monitor storm water emissions, noise and ambient air monitoring (Dust). The following sub-headings detail the results from independent laboratories of the different parameters and the emission limit values ELV's set by the EPA and any complaints and incident that may have occurred during the year.

2.3.1 Surface Water

Storm water passes through a silt trap prior to being discharged to the stream to the South of the facility.

2.3.2 Dust Emissions

As per schedule B5 for dust deposition limits, there are currently three sampling locations (AD1, AD2 and AD3). Monitoring is required annually on site. Figs 1-3 illustrate dust recordings for 2017.

Fig. 1: Dust emission results for DS1 (AD1) in $\text{mg m}^{-2} \text{d}^{-1}$

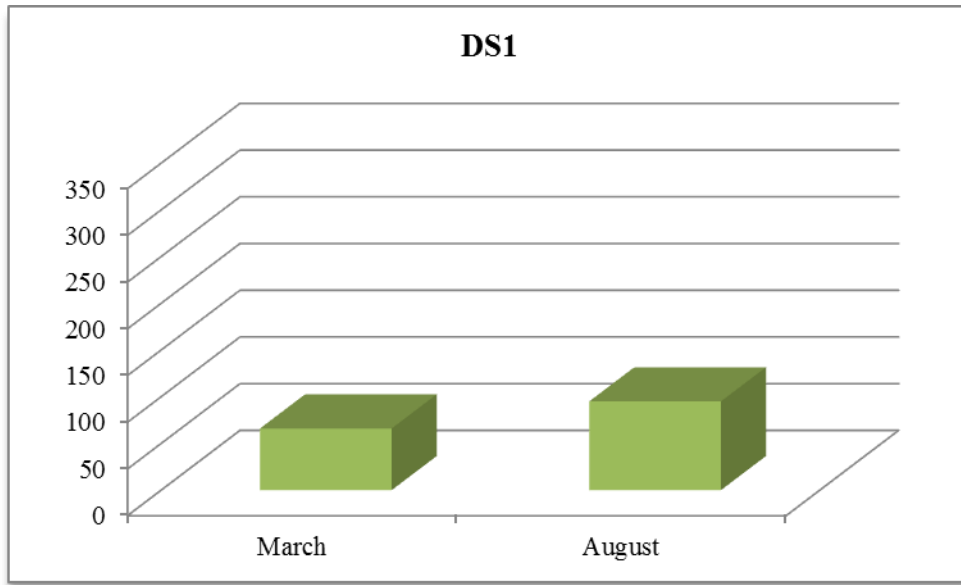


Fig. 2: Dust emission results for DS2 (AD2) in mg m⁻² d⁻¹

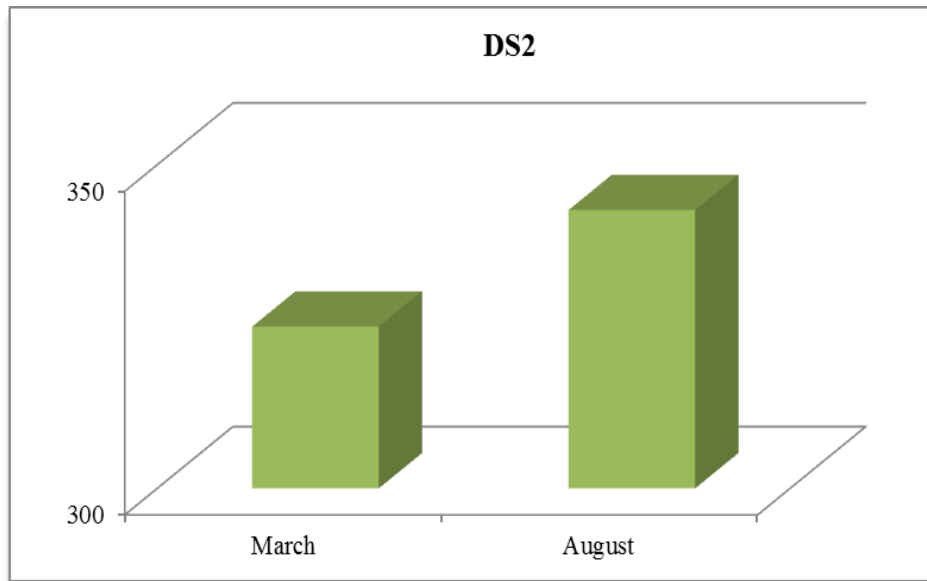
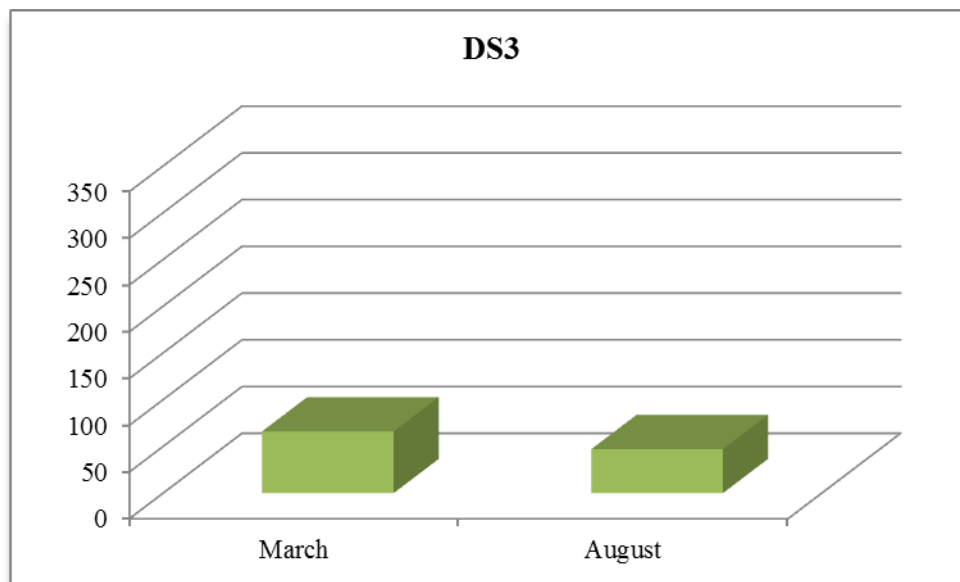


Fig. 3: Dust emission results for DS3 (AD3) in mg m⁻² d⁻¹



As per Schedule B.5, the dust deposition limit for the site is 350 mg m⁻² d⁻¹. AD1, AD2 and AD3 are within licenced ELV's.

2.3.3 Noise Emissions

Noise emissions are monitored according to Schedule B.4 and the emission limit values (ELV) set out in Schedule C.5 of the licence. An independent competent consultant was commissioned to conduct the noise sampling for the facility. Table 3 details results of noise monitoring conducted in 2017.

Table 3:

Noise Emissions 2017

Day – readings

Loen	Date	Time	Leq	Lmin	L10	L90	Comments
AN1	13 th Dec'17	16.30-19.30	54.8	48.4	57	51.1	Road traffic dominant at 53/55 dBA Site trucks going past at 1.5m. Site activity less than 55dBA
AN2	13 th Dec'17	14.00-16.30	61.4	52.2	63.1	55.8	Site noise less than 53dBA

NB The background noise from road traffic from surrounding road network was in the region of 53/56dBA

Night - readings

Locn	Date	Time	Leq	Lmin	L10	L90	Comments
AN1	14 th Dec'17	00.00 to 02.30	51.6	43.1	54.5	45.7	Road traffic noise. Site noise was less than 45dBA
AN2	13 th -14 th Dec'17	22.00 to 01.30	55.2	46.6	58.4	49.5	Road traffic noise. Site noise was less than 45dBA

NB There was no processing on site during night-time

2.3.4 Bund, pipe and underground storage tanks integrity

AQS environmental solutions carried out pipeline integrity testing in September 2014 and this is due for re check in Q2 2018.

McBreen Environmental carried out bund integrity testing in March 2016.

2.3.5 Summary of resource and energy consumption

Table 4: Summary of Energy Consumption from 1st January 2017 to 31st December 2017.

Resource	Quantity
Diesel	90308.90 litres
Electricity	693.486 MW hr

2.3.6. Water

Water is obtained from a shared holding tank and water for the office and amenities is obtained from the municipal water supply.

2.4 Site infrastructure

The following are details on infrastructure in the facility.

2.4.1 *In-place*

The current site infrastructure is outlined below (List 1). List 2 details the waste processing equipment used on site.

List 1: Current site infrastructure

1. Offices
2. Dual Weighbridge.
3. One x Waste processing building
4. One sprinkling system
5. Canteen & toilets.
6. Fuel Depot
10. Fencing around the site

List 2: Waste processing equipment

8 x Forklifts

1 x Multi-sweep attachment

1 x Track machines

1 x Shovel

There is sufficient back up within the group if the forklifts, sweeper, shovel, track machine or the teleporter's break down.

2.5 Progress report on proposals developed to minimise water demand

Water usage is minimised on site due to the nature of the materials handled. Therefore there is no requirement to reduce water usage.

2.6 PRTR Emission.

IPR's PRTR emission return is provided in Appendix D.

3.0 Environmental objectives and targets – 2018.

No	Objective & Target	Method of Achievement	Responsibility	Timescale	Complete in 2018
1	Assess the Effectiveness of Nuisance Control Procedures	Continually review and assess all nuisance control procedures to ensure minimal impact on surrounding area	Facility Manager	Ongoing	Continuous
		Ensure yards are cleaned at the end of each working day	Operatives	Ongoing	Continuous
2	Prevent Water Pollution from Run-Off	Surface Water plug to be checked weekly	Facility Manager	Ongoing	Continuous
		Ensure all gullies are maintained and regularly cleaned	Facility Manager/ Operatives	Ongoing	Continuous
		Pipeline Integrity test to be completed	Facility Manager	September 2014	Q2 2018
		Install Class I full retention separator	Facility Manager	Feb 2013	Complete
		A bund integrity test is to be completed.	Facility Manager	March 2016	complete
3	Maintain and Develop the Environmental Management System	Maintain EMS Documentation on site	Facility Manager/ Env Dept	Continuous	Continuous
		Up date procedures to reflect operational and control changes	Facility Manager/ Env Dept	Continuous	Continuous

4	Assess Waste Acceptance Procedures so as to minimise volume of erratics	Communicate with customers about the items that are not acceptable in the in-coming wastes	Facility Manager/ Sales Reps	Continuous	Continuous
5	Environmental Monitoring	Implement the Environmental Monitoring Programme specified in the Waste Licence	Facility Manager	Continuous	Continuous
		Investigate any accidents of emission limit values	Facility Manager	Continuous	Continuous
6	Ensure and implement a training programme	Identify staff training requirements and provide relevant training	Facility Manager/ Env Dept	Continuous	Continuous
7	To control any emergencies that may arise at the facility	Review and Update the Emergency Response Procedure	Facility Manager/ Env Dept	annual	May 2018
8	Prepare a Standard Operating Procedures Manual	Update the SOP manual relevant to site operations	Facility Manager/ Env Dept	Annual	June 2018
9	Ensure lighting in waste handling buildings provide sufficient lighting so as to assess incoming waste	Clean all light fittings in waste handling buildings	Environmental Manager/ Yard Supervisor	Annual	September 2018
10	Office Recycling	Implement office recycling & aim to be paperless	Office Manager/ Environmental Department	Continuous	Continuous & July 2018
		Continuation of training regarding office recycling	Office Manager/ Environmental Department	Continuous	Continuous
11	Fire Detection	Install additional alarm sounder	Facility Manager	December 2017	Complete

3.1 Summary of reported incidents and complaints

3.1.1 Reported Incidents Summary

On the 30/12/2017 at 10:30 a fire occurred in an underground conveyor of a baler. Cause was failing of a bearing and the Agency were notified.

3.1.2 Complaints:

No complaints occurred during this licence in 2017.

3.2 Review of nuisance controls

3.2.1 Odour

There is minimal risk of odour nuisance due to the nature of the waste accepted at the facility. However, IPR's in house Multi-sweeper cleans the concreted yard routinely throughout the day.

3.2.2 Noise

The monitoring results showed that noise is not a nuisance, as only FEL's, Track Machine's and forklifts are operational on site.

3.2.3 Dust

A dust suppression system is installed in the shed and on the external (South-western side) of the building. The Multi-sweeper is frequently used on all concreted yards. Fire hoses are also available to spray water on concreted yards as required.

3.2.4 Vermin

A file on vermin control is maintained in the office. A sub-contractor is used to control any vermin on site.

3.2.5 Flies

Good housekeeping practices are used to prevent fly infestations. The yard is kept clean using a road sweeper and all waste for disposal is removed from the facility within 48 hours, or 72 hours in the case of a bank holiday weekends.

3.2.6 Birds

In order to avoid having birds as a nuisance, litter control is practised at all times, this includes regular litter patrols. Birds are not attracted, due to the nature of the material handled on site.

3.2.7 Litter

A designated member of staff carries out litter inspections of the facility regularly and gathers any litter deposited. The yard is kept clean using a Mutli-sweeper

4.0 Development of Procedures on Site

The Environmental Management System has been developed and includes the following Standard Operating Procedure;

- Corrective Action;
- Daily Site Inspections;
- Nuisance Management;
- Emergency Response;
- Unacceptable Waste;
- Communications Programme;
- Storage of Fuels and Oils;
- Training and Awareness;
- Environmental Complaints;

A Daily Site Inspection Sheet has been developed to record any potential nuisance on or points to note including a map of the facility for reference as to the location of the nuisance.

5.0 Pollution Emission Register

After consulting the PERL list IPR are not using any substance that is listed at present.

6.0 Report on Programme for Public Information

IPR have a shared website with their sister company Panda. The website was recently re-developed; one of the features is an Environmental page where the following can be downloaded,

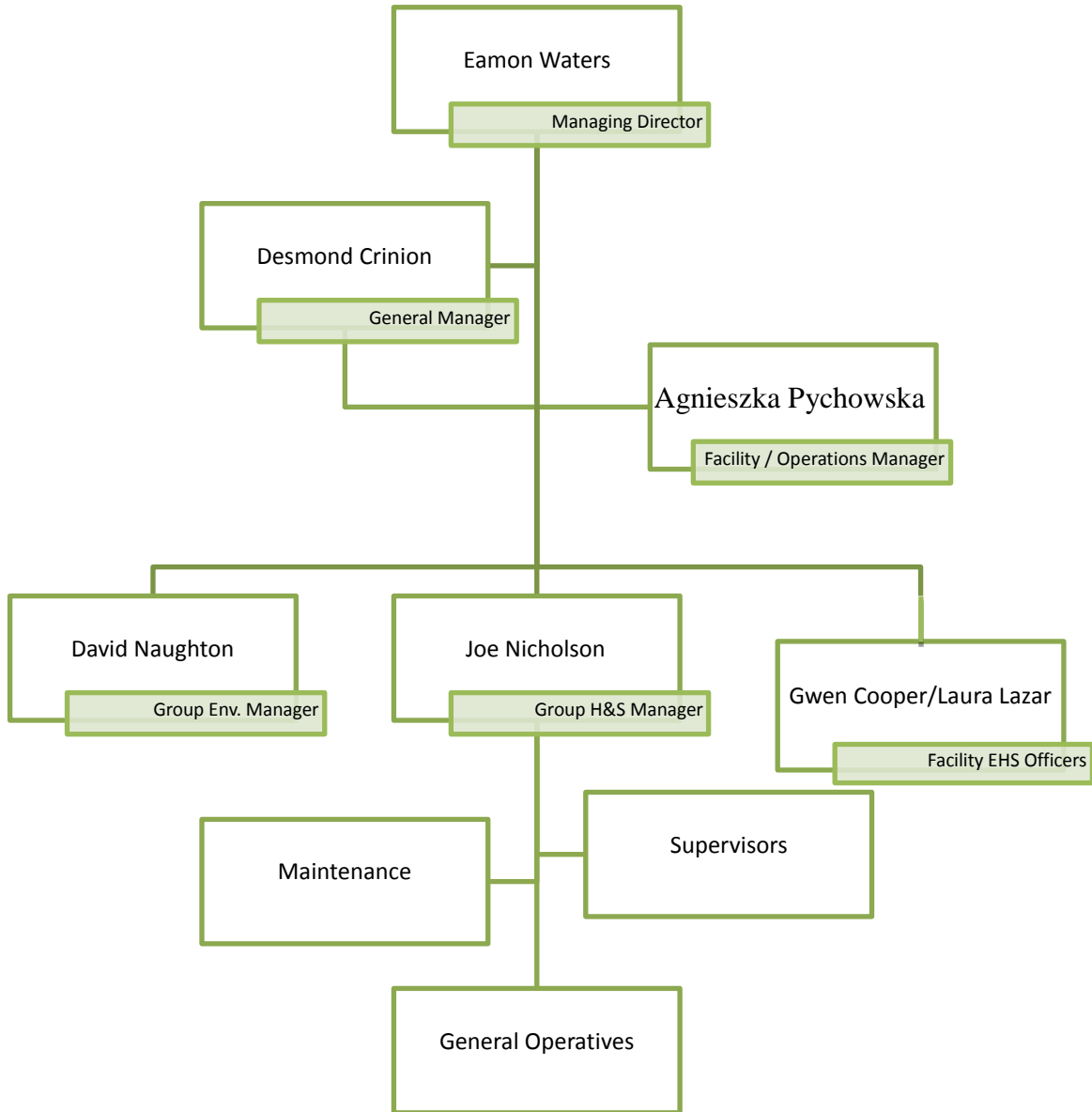
- Facility licences (W0140-04, W0261-02, **W0263-01**)
- Multi-regional Waste collection permit (NWCPO-14-11326-03),
- Environmental Policy,

Recycling certificates are issued to customers, on request, so that they can determine their recycling on a monthly basis.

During the reporting period there were no requests from members of the public to inspect any Environmental Records.

The information in the Annual Environmental Report is true and accurate representation of the activities conducted by IPR in 2017.

Appendix B



Appendix D

PRTR



| PRTR# : W0263 | Facility Name : Irish Packaging Recycling | Filename : W0263_2017 PRTR.xls | Return Year : 2017 |

[Guidance to completing the PRTR workbook](#)

PRTR Returns Workbook

Version 1.1.19

REFERENCE YEAR	2017
-----------------------	------

1. FACILITY IDENTIFICATION

Parent Company Name	Irish Packaging Recycling
Facility Name	Irish Packaging Recycling
PRTR Identification Number	W0263
Licence Number	W0263-01

Classes of Activity

No.	class_name
-	Refer to PRTR class activities below

Address 1	Ballymount Road
Address 2	Walkinstown
Address 3	Dublin 12
Address 4	
	Dublin
Country	Ireland
Coordinates of Location	-6.34193 53.31824
River Basin District	IIEA
NACE Code	3832
Main Economic Activity	Recovery of sorted materials
AER Returns Contact Name	Joe Nicholson
AER Returns Contact Email Address	joe.nicholson@ipr.ie
AER Returns Contact Position	EHS
AER Returns Contact Telephone Number	086 022 6109
AER Returns Contact Mobile Phone Number	086 022 6109
AER Returns Contact Fax Number	
Production Volume	0.0
Production Volume Units	
Number of Installations	0
Number of Operating Hours in Year	0
Number of Employees	25
User Feedback/Comments	
Web Address	

2. PRTR CLASS ACTIVITIES

Activity Number	Activity Name
50.1	General

3. SOLVENTS REGULATIONS (S.I. No. 543 of 2002)

Is it applicable?	
Have you been granted an exemption ?	
If applicable which activity class applies (as per Schedule 2 of the regulations) ?	
Is the reduction scheme compliance route being used ?	

4. WASTE IMPORTED/ACCEPTED ONTO SITE

[Guidance on waste imported/accepted onto site](#)

Do you import/accept waste onto your site for on-site treatment (either recovery or disposal activities) ?	
--	--

This question is only applicable if you are an IPPC or Quarry site

SECTION B : REMAINING PRTR POLLUTANTS

POLLUTANT		METHOD		ADD EMISSION POINT	QUANTITY			
No. Annex II	Name	M/C/E	Method Code	Designation or Description	Emission Point 1	T (Total) KG/Year	A (Accidental) KG/Year	F (Fugitive) KG/Year
					0.0	0.0	0.0	0.0

ADD NEW ROW DELETE ROW * * Select a row by double-clicking on the Pollutant Name (Column B) then click the delete button

SECTION C : REMAINING POLLUTANT EMISSIONS (As required in your Licence)

POLLUTANT		METHOD		ADD EMISSION POINT	QUANTITY					
Pollutant No.	Name	M/C/E	Method Code	Designation or Description	Emission Point 1	Emission Point 2	Emission Point 3	T (Total) KG/Year	A (Accidental) KG/Year	F (Fugitive) KG/Year
					0.05	0.03	0.07	0.15	0.0	0.0

ADD NEW ROW DELETE ROW * * Select a row by double-clicking on the Pollutant Name (Column B) then click the delete button

Additional Data Requested from Landfill operators

For the purposes of the National Inventory on Greenhouse Gases, landfill operators are requested to provide summary data on landfill gas (Methane) flared or utilised on their facilities to accompany the figures for total methane generated. Operators should only report their Net methane (CH₄) emission to the environment under T(total) KG/yr for Section A: Sector specific PRTR pollutants above. Please complete the table below:

Landfill: Irish Packaging Recycling

Please enter summary data on the quantities of methane flared and / or utilised

T (Total) kg/Year	M/C/E	Method Used		Facility Total Capacity m3 per hour
		Method Code	Designation or Description	
Total estimated methane generation (as per site model)	0.0			N/A
Methane flared	0.0			0.0 (Total Flaring Capacity)
Methane utilised in engine/s	0.0			0.0 (Total Utilising Capacity)
Net methane emission (as reported in Section A above)	0.0			N/A

4.2 RELEASES TO WATERS

[Link to previous years emissions data](#)

| PRTR#: W0263 | Facility Name : Irish Packaging Recycling | Filename : W0263_2017 PRTR.xls | Return Year : 2017 |

30/03/2018 12:59

SECTION A : SECTOR SPECIFIC PRTR POLLUTANTS

Data on ambient monitoring of storm/surface water or groundwater, conducted as part of your licence requirements, should NOT be submitted under AER / PRTR Reporting a

RELEASES TO WATERS					Please enter all quantities in this section in KGs			
POLLUTANT					ADD EMISSION POINT	QUANTITY		
No. Annex II	Name	M/C/E	Method Used		Emission Point 1	T (Total) KG/Year	A (Accidental) KG/Year	F (Fugitive) KG/Year
			Method Code	Designation or Description				
					0.0	0.0	0.0	0.0

ADD NEW ROW DELETE ROW * * Select a row by double-clicking on the Pollutant Name (Column B) then click the delete button

SECTION B : REMAINING PRTR POLLUTANTS

RELEASES TO WATERS					Please enter all quantities in this section in KGs			
POLLUTANT					ADD EMISSION POINT	QUANTITY		
No. Annex II	Name	M/C/E	Method Used		Emission Point 1	T (Total) KG/Year	A (Accidental) KG/Year	F (Fugitive) KG/Year
			Method Code	Designation or Description				
					0.0	0.0	0.0	0.0

ADD NEW ROW DELETE ROW * * Select a row by double-clicking on the Pollutant Name (Column B) then click the delete button

SECTION C : REMAINING POLLUTANT EMISSIONS (as required in your Licence)

RELEASES TO WATERS					Please enter all quantities in this section in KGs			
POLLUTANT					ADD EMISSION POINT	QUANTITY		
Pollutant No.	Name	M/C/E	Method Used		Emission Point 1	T (Total) KG/Year	A (Accidental) KG/Year	F (Fugitive) KG/Year
			Method Code	Designation or Description				
					0.0	0.0	0.0	0.0

ADD NEW ROW DELETE ROW * * Select a row by double-clicking on the Pollutant Name (Column B) then click the delete button

4.3 RELEASES TO WASTEWATER OR SEWER

[Link to previous years emissions data](#)

| PRTR#: W0263 | Facility Name : Irish Packaging Recycling | Filename : W0263_2017-PRTR.xls

30/03/2018 12:59

SECTION A : PRTR POLLUTANTS

OFFSITE TRANSFER OF POLLUTANTS DESTINED FOR WASTE-WATER TREATMENT OR SEWER					Please enter all quantities in this section in KGs			
POLLUTANT		METHOD			ADD EMISSION POINT	QUANTITY		
No. Annex II	Name	M/C/E	Method Used		Emission Point 1	T (Total) KG/Year	A (Accidental) KG/Year	F (Fugitive) KG/Year
			Method Code	Designation or Description				
					0.0	0.0	0.0	0.0
ADD NEW ROW		DELETE ROW *		* Select a row by double-clicking on the Pollutant Name (Column B) then click the delete button				

SECTION B : REMAINING POLLUTANT EMISSIONS (as required in your Licence)

OFFSITE TRANSFER OF POLLUTANTS DESTINED FOR WASTE-WATER TREATMENT OR SEWER					Please enter all quantities in this section in KGs			
POLLUTANT		METHOD			ADD EMISSION POINT	QUANTITY		
Pollutant No.	Name	M/C/E	Method Used		Emission Point 1	T (Total) KG/Year	A (Accidental) KG/Year	F (Fugitive) KG/Year
			Method Code	Designation or Description				
					0.0	0.0	0.0	0.0
ADD NEW ROW		DELETE ROW *		* Select a row by double-clicking on the Pollutant Name (Column B) then click the delete button				

4.4 RELEASES TO LAND

[Link to previous years emissions data](#)

| PRTR#: W0263 | Facility Name : Irish Packaging Recycling | Filename : W0263_2017 PRTR.xls | Return Year : 2017 |

30/03/2018 12:59

SECTION A : PRTR POLLUTANTS

RELEASES TO LAND					Please enter all quantities in this section in KGs		
POLLUTANT		METHOD			ADD EMISSION POINT	QUANTITY	
No. Annex II	Name	M/C/E	Method Used		Emission Point 1	T (Total) KG/Year	A (Accidental) KG/Year
			Method Code	Designation or Description			
					0.0	0.0	0.0
ADD NEW ROW	DELETE ROW *	* Select a row by double-clicking on the Pollutant Name (Column B) then click the delete button					

SECTION B : REMAINING POLLUTANT EMISSIONS (as required in your Licence)

RELEASES TO LAND					Please enter all quantities in this section in KGs		
POLLUTANT		METHOD			ADD EMISSION POINT	QUANTITY	
Pollutant No.	Name	M/C/E	Method Used		Emission Point 1	T (Total) KG/Year	A (Accidental) KG/Year
			Method Code	Designation or Description			
					0.0	0.0	0.0
ADD NEW ROW	DELETE ROW *	* Select a row by double-clicking on the Pollutant Name (Column B) then click the delete button					

5. ONSITE TREATMENT & OFFSITE TRANSFERS OF WASTE

| PRTR#: W0263 | Facility Name : Irish Packaging Recycling | Filename : W0263_2017 PRTR.xls | Return Year : 2017 |

30/03/2018 12:59

Please enter all quantities on this sheet in Tonnes

Transfer Destination	European Waste Code	Hazardous	Quantity (Tonnes per Year)	Description of Waste	Waste Treatment Operation	Method Used		Location of Treatment	Haz Waste : Name and Licence/Permit No of Next Destination Facility Non Haz Waste: Name and Licence/Permit No of Recover/Disposer	Haz Waste : Address of Next Destination Facility Non Haz Waste: Address of Recover/Disposer	Name and License / Permit No. and Address of Final Recoverer / Disposer (HAZARDOUS WASTE ONLY)	Actual Address of Final Destination i.e. Final Recovery / Disposal Site (HAZARDOUS WASTE ONLY)
						M/C/E	Method Used					
To Other Countries	15 01 01	No	11888.805	paper and cardboard packaging	R12	M	Weighed	Abroad	Agnail Ltd,Broker	88 Cherrywood Cresent,Clondalkin,Dublin 22,..Ireland		
To Other Countries	15 01 01	No	426.8	paper and cardboard packaging	R12	M	Weighed	Abroad	AES Ltd,Broker	cappuncur ind est,cappuncur ,tullamore,co.offaly,Ireland		
To Other Countries	15 01 01	No	2438.84	paper and cardboard packaging	R12	M	Weighed	Abroad	cellmark,broker	lilla Bommen 3C,SE-404 39 Gothenburg,Gothenburg,PO Box 11927,Sweden		
To Other Countries	15 01 01	No	1301.26	paper and cardboard packaging	R12	M	Weighed	Abroad	Dongguan Huangchong Yinzhou Paper Ind. Com.,Broker - china	huangyong Beidazhou,Dongguan Shi,Guangdong Sheng,..China		
To Other Countries	15 01 01	No	6728.37	paper and cardboard packaging	R12	M	Weighed	Abroad	Mark Lyndon Paper Ent Uk Ltd,Broker - China	12 The Triangle,Nottingham...NG2 1AE,United Kingdom		
To Other Countries	15 01 01	No	11638.38	paper and cardboard packaging	R12	M	Weighed	Abroad	Marwin Environmental Trading Ltd,Broker - India	7 Glyntown Heights,Glanmire,Co. Cork,..Ireland		
To Other Countries	15 01 01	No	4381.31	paper and cardboard packaging	R12	M	Weighed	Abroad	Midland Waste,Broker - China	Proudstown Road,Navan,Co. Meath,..Ireland		
To Other Countries	15 01 01	No	5281.29	paper and cardboard packaging	R12	M	Weighed	Abroad	MLM Ltd,Broker - India	Adamson House,Towers Business Park,Wilmlov Rd Didsbury Manchester,M20 2YY,United Kingdom		
To Other Countries	15 01 01	No	247.04	paper and cardboard packaging	R12	M	Weighed	Abroad	Recycling UK Ltd,Broker	10 portal business park ,Eaton Lane Tarporley,..Cheshire,CW6 9DL,united kingdom		
To Other Countries	15 01 01	No	2431.94	paper and cardboard packaging	R12	M	Weighed	Abroad	Saica Natur,Mill - UK	York Street Mill,Audenshaw,Manchester M345TN,United Kingdom		
To Other Countries	15 01 01	No	1374.48	paper and cardboard packaging	R12	M	Weighed	Abroad	Sca.Emd Recycling ,Broker	543 Hythe Lane,Larkfield Aylesford,Kent,M320 7PE,United Kingdom		
To Other Countries	15 01 01	No	31683.91	paper and cardboard packaging	R12	M	Weighed	Abroad	Vipa Luasanna S.A,Broker	Gaeries Benjamin Constan 1,Case Postable 7700 1002 ,Lausanne,..Switzerland		
Within the Country	15 01 01	No	147.1	paper and cardboard packaging	R12	M	Weighed	Offsite in Ireland	Rebox ,Exempt	2B Kylemore Ind Est,Ballyfermot,Dublin 10,..Ireland		
Within the Country	15 01 01	No	0.28	paper and cardboard packaging	R12	M	Weighed	Offsite in Ireland	ReCreate Ireland,Exempt - Charity	Block K8,Ballymount Industrial Estate,Dublin,D12,Ireland		
Within the Country	15 01 02	No	8.82	plastic packaging	R12	M	Weighed	Offsite in Ireland	Panda Waste Services,W0140-04	Beauparc Business Park,Navan,..Co. Meath,Ireland		
Within the Country	15 01 02	No	1.53	plastic packaging	R12	M	Weighed	Offsite in Ireland	ReCreate Ireland,Exempt - Charity	Block K8,Ballymount Industrial Estate,Dublin,D12,Ireland		
To Other Countries	15 01 02	No	1518.739	plastic packaging	R12	M	Weighed	Abroad	Agnail Ltd,Broker	88 Cherrywood Cresent,Clondalkin,Dublin 22,..Ireland		
To Other Countries	15 01 02	No	667.88	plastic packaging	R12	M	Weighed	Abroad	Boost Recycling Ltd,Broker	47 Swaffham Road,Burwell,Cambridgeshir e,CB25 OAN,United Kingdom		
To Other Countries	15 01 02	No	1128.44	plastic packaging	R12	M	Weighed	Abroad	Leinster Environmental,Broker	Dundalk,Co. Louth,..Ireland		
To Other Countries	15 01 02	No	8.68	plastic packaging	R12	M	Weighed	Abroad	Materia Environment Ltd.,Broker	Kipper House,Scilly,Kinsale,Co. Cor k,Ireland		
To Other Countries	15 01 02	No	120.82	plastic packaging	R12	M	Weighed	Abroad	MLM Ltd,Broker - China	Adamson House,Towers Business Park,Wilmlov Rd Didsbury Manchester.M20 2YY,United Kingdom		

To Other Countries	15 01 02	No	283.36 plastic packaging	R12	M	Weighed	Abroad	Monoworld Ltd,Broker - UK	Rushden Road,Sharnbrook,Bedfordshire,MK441ND,United Kingdom
To Other Countries	15 01 02	No	1039.14 plastic packaging	R12	M	Weighed	Abroad	Peute Recycling BV,Broker - Netherlands	Baanhoekweg 4,3313 La Dordrecht,,Netherlands
To Other Countries	15 01 02	No	49.2 plastic packaging	R12	M	Weighed	Abroad	RBD Plastics GmbH,Broker	Nortorfor Str. 2,24613 Aukrug,,Germany
To Other Countries	15 01 02	No	3078.04 plastic packaging	R12	M	Weighed	Abroad	Vanden Global Ltd,Broker	Unit 807 8/F Mackennycentre,660 Castel Peak road,Kowloon,,Hong Kong
To Other Countries	15 01 02	No	49.02 plastic packaging	R12	M	Weighed	Abroad	WRC Recycling,Broker	Auchans Farm,Johnstone,Renfrewshire,PA6 7EE,United Kingdom
To Other Countries	15 01 03	No	80.76 wooden packaging	R12	M	Weighed	Abroad	Agnail Ltd,Broker	88 Cherrywood Cresent,Clondalkin,Dublin 22,,Ireland
Within the Country	15 01 03	No	36.02 wooden packaging	R12	M	Weighed	Offsite in Ireland	Leinster Environmental,Wp	Dundalk,Co. Louth,,Ireland
Within the Country	15 01 03	No	1.58 wooden packaging	R12	M	Weighed	Offsite in Ireland	Materia Environment Ltd.,TBC	Kipper House,Scilly,Kinsale,Co. Cork,Ireland
Within the Country	15 01 03	No	967.92 wooden packaging	R12	M	Weighed	Offsite in Ireland	TD Freight Ltd,Broker	Tullycara,Castleblaney,Co. Monaghan,,Ireland
Within the Country	15 01 04	No	225.44 metallic packaging	R12	M	Weighed	Offsite in Ireland	multimetal recycling Ltd.,wfp-ww-09-0014-05	Bollamey,the murrough,wicklow,,ireland
Within the Country	15 01 04	No	48.88 metallic packaging	R12	M	Weighed	Offsite in Ireland	STARRUS ECO HOLDINGS LTD,W0039	Ballymount Cross ,,,Dublin 24,Ireland
Within the Country	15 01 04	No	43.98 metallic packaging	R12	M	Weighed	Offsite in Ireland	TANDOM METALLURGICAL GROUPS LIMITED,EPR/QP3634KX	Radnor Park Industrial Estate ,Congleton CW12 4XE,,United Kingdom
To Other Countries	15 01 04	No	30.792 metallic packaging	R12	M	Weighed	Abroad	Agnail Ltd,Broker	88 Cherrywood Cresent,Clondalkin,Dublin 22,,Ireland
To Other Countries	15 01 04	No	58.26 metallic packaging	R12	M	Weighed	Abroad	Wilton Waste Recycling Ltd.,broker	Kiffa Crosserlough,Ballyjamesduff ,Cavan,,Ireland
To Other Countries	15 01 04	No	155.04 metallic packaging	R12	M	Weighed	Abroad	WRC Recycling,Broker - UK	Auchans Farm,Johnstone,Renfrewshire,PA6 7EE,United Kingdom
To Other Countries	20 01 01	No	1241.1 paper and cardboard	R12	M	Weighed	Abroad	Agnail Ltd,Broker	88 Cherrywood Cresent,Clondalkin,Dublin 22,,Ireland
To Other Countries	20 01 01	No	395.46 paper and cardboard	R12	M	Weighed	Abroad	cellmark,broker	lilla Bommen 3C,SE-404 39 Gothenburg,Gothenburg,PO Box 11927,Sweden

To Other Countries	20 01 01	No	884.2 paper and cardboard	R12	M	Weighed	Abroad	Huhtamaki Lurgan Ltd, Broker	41 Inn Road, Dollingstown, Craigavon, BT667JN, United Kingdom 47 Swaffham Road, Burwell, Cambridgeshire, CB25 0AN, United Kingdom
To Other Countries	20 01 01	No	52.06 paper and cardboard	R12	M	Weighed	Abroad	Boost Recycling Ltd, Broker	Kingdom Pleasants House, Pleasants Ln, Saint Kevin's, Dublin 8, Ireland 7 Glyntown Heights, Glanmire, Co. Cork, Ireland
To Other Countries	20 01 01	No	620.94 paper and cardboard	R12	M	Weighed	Abroad	CYCLONE COURIERS, IRE/G034/17	Adamson House, Towers Business Park, Wilmov Rd Didsbury Manchester, M20 2YY, United Kingdom
To Other Countries	20 01 01	No	421.36 paper and cardboard	R12	M	Weighed	Abroad	Marwin Environmental Trading Ltd, Broker - India	Grant House, Stafford Park 12, Telford, TF33BJ, United Kingdom
To Other Countries	20 01 01	No	26.06 paper and cardboard	R12	M	Weighed	Abroad	MLM Ltd, Broker - China	8a Flush Park Ind. Est., Knockmore, Lisburn, BT28 2DX, United Kingdom
To Other Countries	20 01 01	No	4019.1 paper and cardboard	R12	M	Weighed	Abroad	Northwood Recycling Limited, Broker - UK	08785 Vallbona d'Anoia, Barcelona, Spain Baanhoekweg 4, 3313 La Dordrecht, Netherlands
To Other Countries	20 01 01	No	158.488 paper and cardboard	R12	M	Weighed	Abroad	Paper Packaging Company, .	York Street Mill, Audenshaw, Manchester, M345TN, United Kingdom
To Other Countries	20 01 01	No	827.02 paper and cardboard	R12	M	Weighed	Abroad	Papers Catalunya S.L, Mill	543 Hythe Lane, Larkfield Aylesford, Kent, M320 7PE, United Kingdom
To Other Countries	20 01 01	No	267.24 paper and cardboard	R12	M	Weighed	Abroad	Peute Recycling BV, Broker	Unit 1 A Kileen Industrial Park, Kileen Road, Dublin 10, Ireland
To Other Countries	20 01 01	No	348.04 paper and cardboard	R12	M	Weighed	Abroad	Saica Natur, Broker - UK	Gaeries Benjamin Constan 1, Case Postable 7700 1002, Lausanne, Switzerland
To Other Countries	20 01 01	No	2745.92 paper and cardboard	R12	M	Weighed	Abroad	Sca.Emd Recycling, Broker	Ballymount Cross, Tallaght, Dublin 24, Ireland
To Other Countries	20 01 01	No	1168.38 paper and cardboard	R12	M	Weighed	Abroad	Shred it, Broker - UK	Dundalk, Co. Louth, Ireland 88 Cherrywood Crescent, Clondalkin, Dublin 22, Ireland
To Other Countries	20 01 01	No	4895.96 paper and cardboard	R12	M	Weighed	Abroad	Vipa Luasanna S.A, Broker	Proudstown Road, Navan, Co. Meath, Ireland 88 Cherrywood Crescent, Clondalkin, Dublin 22, Ireland
Within the Country	20 01 38	No	365.08 wood other than that mentioned in 20 01 37	R12	M	Weighed	Offsite in Ireland	Panda Waste Services, W0039-02	
Within the Country	20 01 39	No	250.0 plastics	R12	M	Weighed	Offsite in Ireland	Leinster Environmental, Wp 2004/03	
To Other Countries	20 01 39	No	304.51 plastics	R12	M	Weighed	Abroad	Agnail Ltd, Broker	
Within the Country	20 03 01	No	19.7 mixed municipal waste	R12	M	Weighed	Offsite in Ireland	Midland Waste, W0131-02	
To Other Countries	20 03 01	No	5.74 mixed municipal waste	R12	M	Weighed	Abroad	Agnail Ltd, Broker	

Within the Country	20 03 01	No	21.72 mixed municipal waste	R12	M	Weighed	Offsite in Ireland	Panda Waste Services,W0140-03	Beauparc Business Park,Navan,,Co. Meath,Ireland
Within the Country	20 03 01	No	3384.124 mixed municipal waste	R12	M	Weighed	Offsite in Ireland	Panda Waste,W0039-02	ballymount road,Ballymount cross,dublin,d22,Ireland
To Other Countries	15 01 01	No	274.78 paper and cardboard packaging	R12	M	Weighed	Abroad	Huhtamaki Lurgan Ltd,Broker XIAMEN JINGDU IMP&EXP TRADING CO LTD,Nurendale	41 Inn Road,Dollingstown,Craigavon,BT667JN,United Kingdom
To Other Countries	15 01 01	No	1410.58 paper and cardboard packaging	R12	M	Weighed	Abroad	XIAMEN PORT TRADING CO LTD,Nurendale	Beauparc Business Park,Navan,,Ireland
To Other Countries	15 01 01	No	3615.28 paper and cardboard packaging	R12	M	Weighed	Abroad	IRE/AG133/17	Beauparc Business Park,Navan,,Ireland
To Other Countries	15 01 02	No	70.82 plastic packaging	R12	M	Weighed	Abroad	ECO RECYCLING LTD,IRE/G474/19	Unit 133A Slaney Rd ,Dublin Industrial Estate ,Dublin 11,,Ireland
To Other Countries	15 01 02	No	26.14 plastic packaging	R12	M	Weighed	Abroad	GEMINI CORPORATION NV,Broker	Waterwilgweg 6, 2050 Antwerpen ,,,Belgium
Within the Country	15 01 02	No	10.18 plastic packaging	R12	M	Weighed	Offsite in Ireland	Greyhound,W0205-01	Avenue,Clondalkin,Dublin 22,,Ireland
Within the Country	15 01 02	No	0.88 plastic packaging	R12	M	Weighed	Offsite in Ireland	GUJAN WASTE RECOVERY LTD "OWN STOCK",Haulier	Clonoghil Upper ,Clonoghil Upper ,Co. Offaly,,Ireland
To Other Countries	15 01 02	No	152.1 plastic packaging	R12	M	Weighed	Abroad	MAINETTI RECYCLING,Nurendale	Bedwell Road ,Wrexham Industrial Estate ,Wrexham LL13 0TS,,United Kingdom
To Other Countries	15 01 02	No	10.38 plastic packaging	R12	M	Weighed	Abroad	MDK 69 ODD VADIAS,Nurendale	Kosovelova cesta 3 ,1290,Grosuplje ,,,Slovenia
Within the Country	15 01 02	No	13.7 plastic packaging	R12	M	Weighed	Offsite in Ireland	IRE/AG133/17	Kosovelova cesta 3 ,1290,Grosuplje ,,,Slovenia
Within the Country	15 01 02	No	10.34 plastic packaging	R12	M	Weighed	Offsite in Ireland	OMAPLAST D.O.O,Nurendale	Kosovelova cesta 3 ,1290,Grosuplje ,,,Slovenia
Within the Country	15 01 02	No	12.84 plastic packaging	R12	M	Weighed	Offsite in Ireland	Midland Waste,Broker - China	Proudstown Road,Navan,Co. Meath,,Ireland
To Other Countries	15 01 03	No	1.08 wooden packaging	R12	M	Weighed	Abroad	ECO RECYCLING LTD,IRE/G474/19	Unit 133A Slaney Rd ,Dublin Industrial Estate ,Dublin 11,,Ireland
Within the Country	15 01 03	No	0.4 wooden packaging	R12	M	Weighed	Offsite in Ireland	Greyhound,W0205-01	Avenue,Clondalkin,Dublin 22,,Ireland
Within the Country	16 01 03	No	432.48 end-of-life tyres	R12	M	Weighed	Offsite in Ireland	CROSSMORE TYRE RECYCLING,Wf-DS-14-0010-01	Carrigdownane Upper ,Rockmills Co. Cork,Co. Cork,,Ireland
Within the Country	16 01 03	No	52.58 end-of-life tyres	R12	M	Weighed	Offsite in Ireland	MSM RECYCLING,WFP-TN-11-0003-02	Annagh ,Birr Co. Offaly,Co. Offaly,,Ireland
To Other Countries	16 01 03	No	961.48 end-of-life tyres	R12	M	Weighed	Abroad	SOUTHERN TYRE RECYCLING,IRE/G487/17	Hollymount Ind Est HollyHill. ,Cork City,,Ireland
To Other Countries	20 01 01	No	324.34 paper and cardboard	R12	M	Weighed	Abroad	Recycling UK Ltd,Broker	10 portal business park ,Eaton Lane Tarporley ,Cheshire,CW6 9DL,united kingdom
Within the Country	20 01 36	No	discarded electrical and electronic equipment other than those mentioned in 20 01 21, 20 01 23 and 20 01 35	R12	M	Weighed	Offsite in Ireland	ELECTRICAL WASTE MANAGEMENT,WFP-DS-09-0012-01	Greenogue Facility ,Rathcoole County Dublin,County Dublin,,Ireland
Within the Country	20 01 36	No	discarded electrical and electronic equipment other than those mentioned in 20 01 21, 20 01 23 and 20 01 35	R12	M	Weighed	Offsite in Ireland	KMK METALS RECYCLING LTD T/A WEEE RECYCLING,W0113-03	Cappincur Industrial Estate,Daingean Road,Tullamore,Co. Offaly,Ireland

ADD NEW ROW DELETE ROW * Select a row by double-clicking the Description of Waste then click the delete button

