



Annual Environmental Report

Waste Licence Number W0238-01

01st January 2017 – 31st December 2017

Irish Packaging Recycling

Merrywell Industrial Estate

Ballymount Road Lower

Ballymount, Dublin 12

Date	Status	Prepared By	Reviewed By
19/02/2018	Draft	Laura Lazar	Joe Nicholson
30/03/2018	Final	Laura Lazar	Joe Nicholson

Table of Contents

1.	Introduction.....	5
1.1	Company Details	5
1.2	Management Structure	6
1.3	Financial Provision.....	6
1.4	Environmental Policy.....	6
1.5	Activities	7
1.6	Water Usage	8
2.	Summary Information.....	8
2.1	Waste Received.....	8
2.2	Waste Transferred Off-Site for Disposal or Recovery.....	8
2.3	Waste recovery report	9
2.4	Summary report on emissions and interpretation of environmental monitoring	9
2.4.1	Storm Water Emissions.....	9
2.4.2	Noise Emissions.....	10
2.4.3	Tank and Pipeline Testing and Inspection Report	12
2.4.4	Summary of Resource and Energy Consumption.....	12
2.4.5	Water.....	12
2.5	Site Infrastructure.....	12
2.6	Progress report on proposals developed to minimise water demand	14
2.7	PRTR Emission.....	14
3.	Environmental Objectives and Targets	15
3.1	Review of Environmental Objectives and Targets 2017.....	15
3.2	Environmental Objectives and Targets for 2017.....	17

3.3	Summary of Reported Incidents and Complaints	20
3.3.1	Reported Incidents Summary	20
3.3.2	Complaints	20
3.4	Review of Nuisance Controls.....	20
3.4.1	Odour	20
3.4.2	Noise	20
3.4.3	Vermin	20
3.4.4	Flies.....	20
3.4.5	Birds.....	20
3.4.6	Litter.....	20
4.	Development of Procedures on Site.....	21
5.	Pollution Emission Register.....	21
6.	Report on Programme for Public Information	22
7.	Appendix B	24
7.1	Organisational Structure.....	24
8.	Appendix C	25
8.1	PRTR Emissions	25

1. Introduction

Irish Packaging Recycling operates Waste Licence W0238-01 on behalf of Dublin City Council.

The following Annual Environmental Report was prepared in accordance with Condition 11.8 and Schedule E of Waste Licence W0238-01, and with reference to Environmental Protection Agency guidance on Annual Environmental Reporting.

This AER relates to the calendar year 2017. The report provides details of the activities carried out at the facility from the 01st of January 2017 to the 31st December 2017.

1.1 Company Details

Licence No: W0238-01

Name: Irish Packaging Recycling Ltd.

Address: Ballymount Road,
Walkinstown,
Dublin 12.

Telephone Number: 01 4602011

Fax Number: 01 4602210

Website: www.panda.ie

1.2 Management Structure

There are 110 employees either working directly or indirectly at the facility. Appendix B illustrates the organisational structure of the facility.

1.3 Financial Provision

The Environmental Liability Risk Assessment (ERLA) and the Decommissioning Management Plan (DMP) were approved by the Agency in 2017.

1.4 Environmental Policy

In carrying out our function, IPR/Panda acknowledge that our activities impact upon the environment both through routine internal operations and the actions of our staff.

It is Panda's policy to protect the environment during all activities, both on and off-site.

This is achieved by:

- Strategic preparation and implementation of operating procedures (including an emergency response procedure).
- Utilizing BAT (Best Available Technology).
- Actively promoting environmental awareness amongst staff and clients through appropriate training and communication programs.
- Reduce energy use through effective education and awareness and the installation of energy efficient technology where appropriate.
- Implementing a policy of continuous improvement, by means of targeted objectives. All objectives and targets are monitored and up-dated accordingly.

IPR / Panda are committed to complying with all relevant environmental regulations and aim to supply a safe competitive and sustainable service with specific regards to the surrounding environment.

1.5 Activities

Irish Packaging Recycling commenced operation of the Regional Materials Recovery Facility on behalf of the four Dublin Local Authorities under Waste Licence W0238-01 in January 2012.

This licence allows Irish Packaging Recycling Ltd. to carry out the following waste handling activities as permitted under the Third and Fourth Schedules of the Waste Management Act 1996 to 2003:

Class 12 and 13 Waste Disposal Activities, in accordance with the Third Schedule of the Waste Management Act, 1996;

- **Third Schedule, Class 12:** Repackaging prior to submission to any activity referred to in a preceding paragraph of this Schedule;
- **Third Schedule, Class 13:** Storage prior to submission referred to in a preceding paragraph of this Schedule, other than temporary storage, pending collection, on the premises where the waste concerned is produced;

Class 2, 3, 4 and 13 Waste Recovery Activities, in accordance with the Fourth Schedule of the Waste Management Act, 1996;

- **Forth Schedule, Class 2:** Recycling or reclamation of organic substances which are not used as solvents (including composting and other biological transformation processes); Principle activity.
- **Forth Schedule, Class 3:** Recycling or reclamation of metal and metal compounds;
- **Forth Schedule, Class 4:** Recycling or reclamation of other inorganic materials;
- **Forth Schedule, Class 13:** Storage of waste intended for submission to any activity referred to in a preceding paragraph of this Schedule, other than temporary storage, pending collection, on the premises where the waste concerned is produced.

Irish Packaging Recycling accepts household dry recyclable materials that have been collected in a single co-mingled waste stream from kerbside collections to the Regional Materials Recovery Facility. The materials accepted include paper, newspapers, magazines, cardboard, aluminium cans, steel cans, tetrapak beverage cartons, plastic bottles including PET, HDPE, PVC containers and plastic film. All materials collected and processed at the Regional MRF come from the Dublin Region.

Irish Packaging Recycling also accepts small quantities of commercial dry recyclable materials to the Regional Materials Recovery Facility. The materials accepted include paper, cardboard, aluminium and steel cans, and mixed plastics.

1.6 Water Usage

Water for fire sprinkler system is taken from a holding tank located on the facility. Water to office and amenities is taken from a municipal supply and is metered by the council.

2. Summary Information

2.1 Waste Received

The waste received at the facility from the 01st January 2017 to the 31st December 2017 was 78,720.53 tonnes.

TABLE 1: Waste received in 2017

EWC code	Waste Description	Tonnage
20 03 01	Mixed Dry Recyclables	78,720.53

2.2 Waste Transferred Off-Site for Disposal or Recovery

See Appendix C for the breakdown of the different destinations used for the waste removed off site by EWC code.

2.3 Waste recovery report

TABLE 2: Outgoing destination and recovery rate

Destination	Tonnage	%
Disposal	0	0
Recovery	76,589.35	100

2.4 Summary report on emissions and interpretation of environmental monitoring

Under condition 6 and Schedule C of the licence W0238-01, IPR are required to monitor storm water emissions and noise. The following sub-headings detail the results from independent laboratories of the different parameters and the emission limit values ELV's set by the EPA and any complaints and incident that may have occurred during the year.

2.4.1 Storm Water Emissions

TABLE 3: 2017 Quarterly Samples

Quarter 1:

Test Parameter	SOP	Analytical Technique	Result	Units
COD (surface water)	107	Colorimetry	36	mg/L
pH (surface water)	110	Electrometry	7.7	pH Units
Solids (total suspended)	106	Filtration / Drying @ 104C	15	mg/L

Quarter 2:

Test Parameter	SOP	Analytical Technique	Result	Units
COD (surface water)	107	Colorimetry	37	mg/L
pH (surface water)	110	Electrometry	7.5	pH Units
Solids (total suspended)	106	Filtration / Drying @ 104C	9	mg/L

Quarter 3:

Test Parameter	SOP	Analytical Technique	Result	Units
COD (Surface Water.)	107	Colorimetry	8	mg/L
pH (Surface Water.)	110	Electrometry	7.3	pH Units
Solids (Total Suspended)	106	Filtration / Drying @ 104C	3	mg/L

Quarter 4:

Test Parameter	SOP	Analytical Technique	Result	Units
COD (surface water)	107	Colorimetry	86	mg/L
pH (surface water)	110	Electrometry	7.1	pH Units
Solids (total suspended)	106	Gravimetry	31	mg/L

2.4.2 Noise Emissions

Noise emissions are monitored according to Schedule B.4 and Condition 6.15 of the licence. An independent competent consultant was commissioned to conduct the noise sampling for the facility. Table 4 details results of noise monitoring conducted in 2017.

TABLE 4: Noise Emissions 2017

Table 1.0 Day-time Noise Levels dB(A) – Intervals 15 minutes-Mean values

Location	Date	Time	Leq	L50	L90	Comments
N1	14 th Dec'17	13.00- 14.30	55.5	55.3	54.0	Road traffic noise
N2	14 th Dec'17	13.15- 14.30	61.0	60.3	59.2	Mainly road traffic noise
N3	14 th Dec'17	15.00- 15.45	59.5	59.1	58	Mainly road traffic noise
N4	14 th - Dec'17	15.15- 16.00	60.4	60.2	59	Mainly road traffic noise
N5 (NSL)	14 th Dec'17	15.30- 16.30	54.8	54.7	53.6	Road traffic noise dominant-waste facility not audible

Table 2.0 Night-time Noise Levels dB(A) – Intervals 15 minutes- Mean values

Location	Date	Time	Leq	L50	L90	Comments
N1	14 th Dec'17	23.00 - 23.45	51.5	50.7	49	Mainly road traffic noise
N2	14 th Dec'17	23.00- 23.45	50.9	50	48.2	Mainly road traffic noise
N3	14 th Dec'17	23.15- 24.00	52.2	51.9	50.2	Mainly road traffic noise
N4	14 th -15 th Dec'17	23.30- 00.15	49.9	49	47.3	Mainly road traffic noise
N5 (NSL)	14 th -15 th Dec'17	01.00- 01.45	48.3	47.8	46.3	Road traffic noise dominant. Waste facility not audible

2.4.3 Tank and Pipeline Testing and Inspection Report

McBreen environmental carried out pipeline integrity testing in January 2017.

McBreen environmental carried out bund integrity testing in April 2016.

2.4.4 Summary of Resource and Energy Consumption

Table 5: Summary of Resource and Energy Consumption from 01st January 2017 to December 2017.

Raw Material/Resource	Application	Consumption
Electricity	Office and plant use	2,603.32 MW hr
Marked Diesel	Mobile plant machinery	80,045.00 litres

2.4.5 Water

Water for fire sprinkler system is taken from a holding tank located on the facility. Water to office and amenities is taken from a municipal supply and is metered by the council.

2.5 Site Infrastructure

The current site infrastructure is outlined below (List 1). List 2 details the waste processing equipment used on site.

List 1: Current site infrastructure

1. Offices
2. Dual Weighbridge
3. One Waste processing building
4. One sprinkling system
5. One air sampling system
6. Canteen and toilets
7. Maintenance Workshop

8. Fencing around the site
9. ESB sub station

List 2: Waste processing equipment

1 x Shovel

3 x Forklifts

1 x Multi - sweeper

2 x OCC Screens

6 x News screens

1 x Eddy Current

2 x Multi Wave

1 x Fibre sort

1 x Perforator

2 x Magnets

3 x Aladdin

4 x Walking Floor Bunkers

1 x Single Ram Baler

1 x Twin Ram Baler

2 x Manual Balers

There is sufficient back up within the group if the shovel, forklifts or hook loader break down.

2.6 Progress report on proposals developed to minimise water demand

Water usage is minimised on site due to the nature of the materials handled. Therefore there is no requirement to reduce water usage.

2.7 PRTR Emission

IPR MRF PRTR emission return is provided in Appendix D.

3. Environmental Objectives and Targets

3.1 Review of Environmental Objectives and Targets 2017

No.	Aspects	Objective & Target	Method of Achievement	Responsibility of	Status
1	Waste Management	Ensure the most efficient and environmentally sustainable management of material entering the MRF	Promote Recycling in-house within the MRF site offices	EHS Manager /Facility Manager	On-going
			Provide paper recycling bins	EHS Manager	Complete
			Carry out waste characterisation surveys monthly	Facility Manager	On-going
2	Compliance with the facility Waste Licence	Operate the facility in accordance with the Conditions of the Waste Licence and promote continual environmental improvement	Review training schedule of each staff member and identify training needs	EHS Manager	On going
			Continue programme of regular inspections to include storm water sampling	EHS Manager	On-going
			Continue to maintain the appropriate records at the facility in accordance with Condition 11 of the facility Waste Licence	EHS Manager	On-going
3	Water/Oil	Prevent surface water contamination	Ensure all gullies refitted with wire mesh are maintained	EHS Manager	On-going
			Bund Integrity testing to be completed	EHS Manager	Complete
			Paint SW manhole covers	EHS Manager	Complete
			Concrete repairs	Facility Manager	On-going
			Drainage Integrity Repairs	EHS Manager	On-going
			Diesel tank to be raised to allow drip tray be fitted underneath pipework	EHS Manager /Facility Manager	Complete
4	Traffic Management	Achieve organised, efficient and safe movement of cars, trucks and	Repaint road markings and review site traffic management plan	H&S Manger	On-going

		machinery on site minimising noise and emissions			
5	Resource Use and Energy Efficiency	Identify opportunities for energy use reduction and efficiency	Identify where energy savings can be made	EHS Manager	On-going
			Maintenance of non-concussive push button taps so as to reduce wastage	EHS Manager /Facility Manager	On-going
6	Public Relations	Minimisation of Complaints	Effectively deal with complaints	EHS Manager	On-going
			Maintain a high standard of housekeeping practises at the facility to minimise the number of complaints	EHS Manager	On-going
7	Emergencies	To control any emergency that may arise in the facility	Review emergency response procedure and train all personnel if required	EHS Manager	Complete
8	Litter	Prevent litter	Facility has at all times got staff monitoring litter on site	Facility Manager	On-going
			New fencing to be installed around car park	Facility Manager	Complete
9	Fire	Prevent fire source	Dust levels to be monitored weekly on audit	EHS manager	On-going
			Fire equipment weekly checks / maintenance	EHS manager	On-going
			CCTV System to be upgraded	Facility Manager	Complete
10	Buildings	Wall repairs	Re-build intake shed damaged wall	Facility Manager	Complete
		Improved lighting	Facade lighting to be repaired	Facility Manager	Complete
			Lighting to be improved in QC Cabins	Facility Manager	Complete

3.2 Environmental Objectives and Targets for 2018

No.	Aspects	Objective & Target	Method of Achievement	Responsible	Status
1	Waste Management	Ensure the most efficient and environmentally sustainable management of material entering the MRF	Ensure recycling program is maintained and paper bins are kept in good condition Promote Recycling in-house within the MRF site offices	EHS Manager	On-going
			Carry out waste characterisation surveys monthly	Facility Manager	On-going
2	Compliance with the facility Waste Licence	Operate the facility in accordance with the Conditions of the Waste Licence and promote continual environmental improvement	Review training schedule of each staff member and identify training needs	EHS Manager	On going
			Continue programme of regular inspections to include storm water sampling	EHS Manager	On-going
			Continue to maintain the appropriate records at the facility in accordance with Condition 11 of the facility Waste Licence	EHS Manager	On-going
3	Water/Oil	Prevent surface water contamination	Ensure all gullies refitted with wire mesh are maintained	EHS Manager	On-going
			Paint SW manhole covers	EHS Manager	May
			Concrete repairs	Facility Manager	December
			Drainage Integrity Repairs	EHS Manager	March
			Repaint road markings and review site traffic management plan	H&S Manger	August
			Identify where energy savings can be made	EHS Manager	On-going

4	Traffic Management	Achieve organised, efficient and safe movement of cars, trucks and machinery on site minimising noise and emissions	Maintenance of non-concussive push button taps so as to reduce wastage	EHS Manager /Facility Manager	On-going
5	Resource Use and Energy Efficiency	Identify opportunities for energy use reduction and efficiency	Effectively deal with complaints	EHS Manager	On-going
			Maintain a high standard of housekeeping practises at the facility to minimise the number of complaints	EHS Manager	On-going
6	Public Relations	Minimisation of Complaints	Review emergency response procedure and train all personnel if required	EHS Manager	August
			Facility has at all times got staff monitoring litter on site	Facility Manager	On-going
7	Emergencies	To control any emergency that may arise in the facility	Training for fire hydrant and lay flat training (mock event)	EHS Manager	On-going / Monthly
8	Litter	Prevent litter	Dust levels to be monitored weekly on audit	EHS manager	On-going
			Fire equipment weekly checks / maintenance	EHS manager	On-going
9	Fire	Prevent fire source	Upgraded CCTV System to by maintained	Facility Manager	On-going
			Ensure loads tipped are checked	Facility Manager	On-going
			Ensure all firefighting equipment is regularly checked and maintained	EHS manager	On-going
			Create training document for firefighting equipment regularly checks	EHS manager	March
			Train new staff for firefighting checks	EHS manager	March

10	Buildings	Exterior façade signage	Wear Signs to be replaced if damaged	EHS manager	March
		Wall repairs	Maintain wall condition	Facility Manager	On-going
		Wall repairs	Maintain wall condition	Facility Manager	On-going

3.3 Summary of Reported Incidents and Complaints

3.3.1 Reported Incidents Summary

There were no incidents during the reporting period 01st January to 31st December 2017.

3.3.2 Complaints

There were no complaints during the reporting period 01st January to 31st December 2017.

3.4 Review of Nuisance Controls

3.4.1 Odour

There is minimal risk of odour nuisance due to the nature of the waste accepted at the facility. However, IPR now has a permanent sweeper on site that cleans the concreted yard routinely throughout the day. Material is turned over in a timely fashion.

3.4.2 Noise

The monitoring results showed that noise is not a nuisance.

3.4.3 Vermin

A file on vermin control is maintained in the office. A sub-contractor is used to control any vermin on site.

3.4.4 Flies

Good housekeeping practices are used to prevent fly infestations. Fly Spraying is conducted inside the facility during the summer months on a weekly / bi-weekly basis by a sub-contractor.

3.4.5 Birds

In order to avoid having birds as a nuisance, litter control is practised at all times, this includes regular litter patrols. Birds are not attracted, due to the nature of the material handled on site.

3.4.6 Litter

A designated member of staff carries out litter inspections of the facility regularly and gathers any litter deposited. The yard is kept clean using a multi – sweeper.

4. Development of Procedures on Site

The Environmental Management System has been developed and includes the following Standard Operating Procedure;

- Corrective Action;
- Daily Site Inspections;
- Nuisance Management;
- Emergency Response;
- Unacceptable Waste;
- Communications Programme;
- Storage of Fuels and Oils;
- Training and Awareness;
- Environmental Complaints;

A Daily Site Inspection Sheet has been developed to record any potential nuisance on or points to note.

5. Pollution Emission Register

After consulting the PERL list IPR MRF are not using any substance that is listed at present.

6. Report on Programme for Public Information

IPR have a shared website with their sister company Panda. One of its features is an Environmental page where the following can be downloaded:

- Facility licences (W0140-04, W0261-02, W0263-01, W0039-02, **W0238-01**);
- Multi-regional Waste collection permit (NWCPO-13-11193-05);
- Environmental Policy.

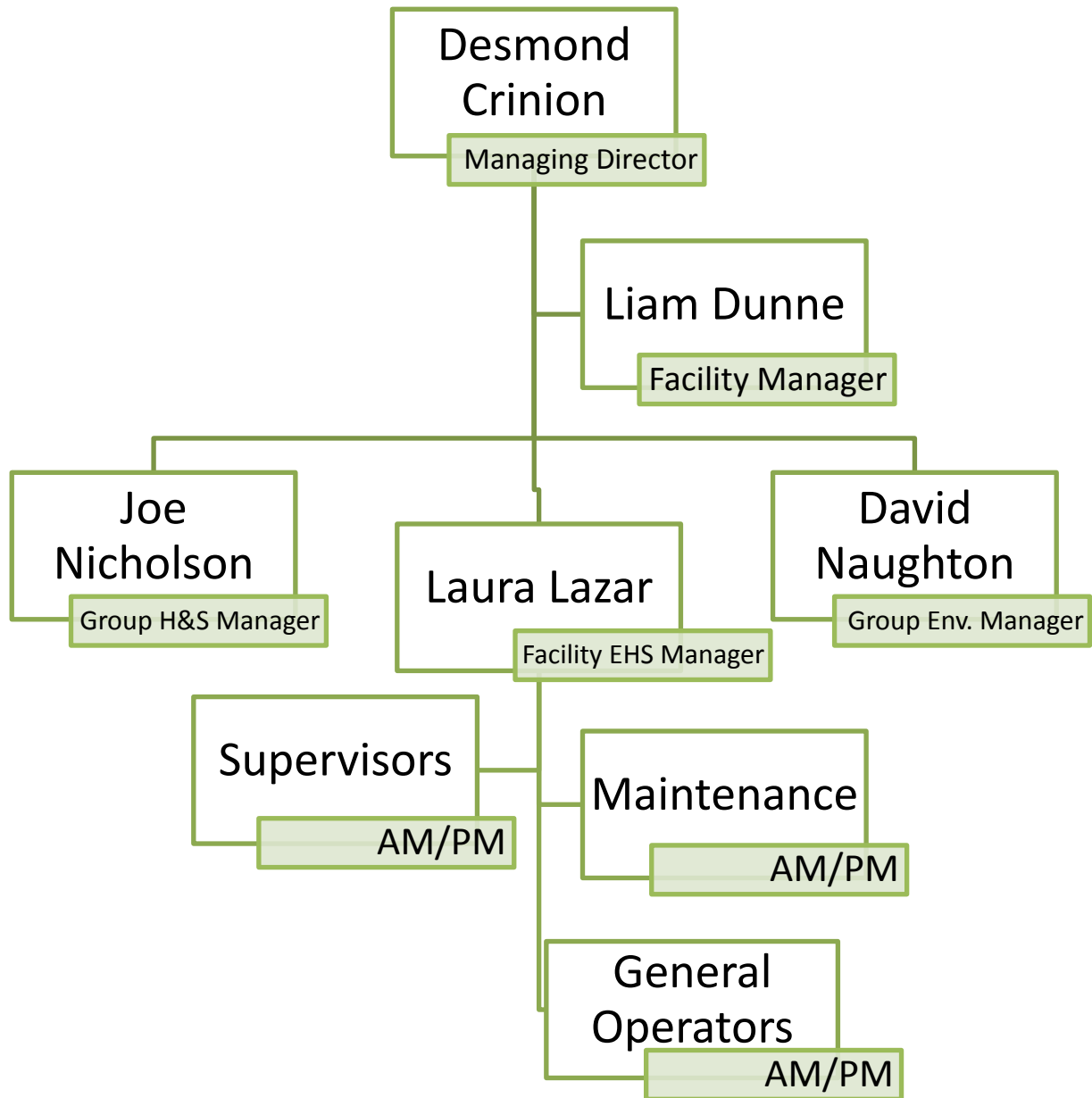
Recycling certificates are issued to customers, on request, so that they can determine their recycling on a monthly basis.

During the reporting period there were no requests from members of the public to inspect any Environmental Records.

The information in the Annual Environmental Report is true and accurate representation of the activities conducted by IPR in 2017.

7. Appendix B

Organisational Structure



8. Appendix C

PRTR Emissions



IPRTR#: W0238 | Facility Name: Ballymount MRF (Merrywell) | Filename: W0238_2017.xls | Return Year: 2017 |

30/03/2018 14:14

[Guidance to completing the PRTR workbook](#)

PRTR Returns Workbook

Version 1.1.19

REFERENCE YEAR	2017
-----------------------	------

1. FACILITY IDENTIFICATION

Parent Company Name	Dublin City Council
Facility Name	Ballymount MRF (Merrywell)
PRTR Identification Number	W0238
Licence Number	W0238-01

Classes of Activity	
No.	class_name
-	Refer to PRTR class activities below

Address 1	Merrywell Industrial Estate
Address 2	Ballymount Road Lower
Address 3	Ballymount
Address 4	Dublin 12
	Dublin
Country	Ireland
Coordinates of Location	-8.35671 53.3145
River Basin District	IEEA
NACE Code	3832
Main Economic Activity	Recovery of sorted materials
AER Returns Contact Name	Laura Lazar
AER Returns Contact Email Address	laura.lazar@greenstat.ie
AER Returns Contact Position	EHS Manager
AER Returns Contact Telephone Number	086 010 4426
AER Returns Contact Mobile Phone Number	086 022 6109 (Joe Nicholson)
AER Returns Contact Fax Number	
Production Volume	0.0
Production Volume Units	
Number of Installations	0
Number of Operating Hours in Year	0
Number of Employees	110
User Feedback/Comments	
Web Address	

2. PRTR CLASS ACTIVITIES

Activity Number	Activity Name
50.1	General
5(c)	Installations for the disposal of non-hazardous waste
50.1	General

3. SOLVENTS REGULATIONS (S.I. No. 543 of 2002)

Is it applicable?	
Have you been granted an exemption?	
If applicable which activity class applies (as per Schedule 2 of the regulations)?	
Is the reduction scheme compliance route being used?	

4. WASTE IMPORTED/ACCEPTED ON

[Guidance on waste imported/accepted onto site](#)

Do you import/accept waste onto your site for on-site treatment (either recovery or disposal activities)?	
---	--

This question is only applicable if you are an IPPC or Quarry site

4.1 RELEASES TO AIR

[Link to previous years emissions data](#)

W0238_2017.xls | Return Year : 2017 |

30/03/2018 14:14

SECTION A : SECTOR SPECIFIC PRTR POLLUTANTS

RELEASES TO AIR		Please enter all quantities in this section in KGs			
POLLUTANT		ADD EMISSION POINT	QUANTITY		
No. Annex II	Name	Emission Point 1	T (Total) KG/Year	A (Accidental) KG/Year	F (Fugitive) KG/Year
			0.0	0.0	0.0

ADD NEW ROW | DELETE ROW * * Select a row by double-clicking on the Pollutant Name (Column 1)

SECTION B : REMAINING PRTR POLLUTANTS

RELEASES TO AIR		Please enter all quantities in this section in KGs			
POLLUTANT		ADD EMISSION POINT	QUANTITY		
No. Annex II	Name	Emission Point 1	T (Total) KG/Year	A (Accidental) KG/Year	F (Fugitive) KG/Year
			0.0	0.0	0.0

ADD NEW ROW | DELETE ROW * * Select a row by double-clicking on the Pollutant Name (Column 1)

SECTION C : REMAINING POLLUTANT EMISSIONS (As required in your Licence)

RELEASES TO AIR		Please enter all quantities in this section in KGs			
POLLUTANT		ADD EMISSION POINT	QUANTITY		
Pollutant No.	Name	Emission Point 1	T (Total) KG/Year	A (Accidental) KG/Year	F (Fugitive) KG/Year
			0.0	0.0	0.0

ADD NEW ROW | DELETE ROW * * Select a row by double-clicking on the Pollutant Name (Column 1)

Additional Data Requested from Landfill operators

For the purposes of the National Inventory on Greenhouse Gases, landfill operators are requested to provide summary data on landfill gas (Methane) flared or utilised on their facilities to accompany the figures for total methane generated. Operators should only report their Net methane (CH4) emission to the environment under T(total) KG/yr for Section A: Sector specific PRTR pollutants above. Please complete the table below:

Landfill:

Please enter summary data on the quantities of methane flared and / or utilised

Ballymount MRF (Merrywell)

	T (Total) kg/Year	Facility Total Capacity m3 per hour
Total estimated methane generation (as per site model)	0.0	N/A
Methane flared	0.0	0.0 (Total Flaring Capacity)
Methane utilised in engine/s	0.0	0.0 (Total Utilising Capacity)
Net methane emission (as reported in Section A above)	0.0	N/A

4.2 RELEASES TO WATERS [Link to previous years emissions data](#)

PRTR#: W0238 | Facility Name : Ballymount MRF (Merrywell) | Filename : W0238_2017.xls | Return Year : 2017 |

30/03/2018 14:14

0

SECTION A : SECTOR SPECIFIC PRTR POLLUTANTS

Data on ambient monitoring of storm/surface water or groundwater, conducted as part of your licence requirements, should NOT be submitted under AER / PRTR Reporting as this only concerns Releases from your facility

RELEASES TO WATERS					Please enter all quantities in this section in KGs			
POLLUTANT		Method Used			ADD EMISSION POINT	QUANTITY		
No. Annex II	Name	M/C/E	Method Code	Designation or Description	Emission Point 1	T (Total) KG/Year	A (Accidental) KG/Year	F (Fugitive) KG/Year
					0.0	0.0	0.0	0.0

ADD NEW ROW | DELETE ROW * * Select a row by double-clicking on the Pollutant Name (Column B) then click the delete button

SECTION B : REMAINING PRTR POLLUTANTS

RELEASES TO WATERS					Please enter all quantities in this section in KGs			
POLLUTANT		Method Used			ADD EMISSION POINT	QUANTITY		
No. Annex II	Name	M/C/E	Method Code	Designation or Description	Emission Point 1	T (Total) KG/Year	A (Accidental) KG/Year	F (Fugitive) KG/Year
					0.0	0.0	0.0	0.0

ADD NEW ROW | DELETE ROW * * Select a row by double-clicking on the Pollutant Name (Column B) then click the delete button

SECTION C : REMAINING POLLUTANT EMISSIONS (as required in your Licence)

RELEASES TO WATERS					Please enter all quantities in this section in KGs			
POLLUTANT		Method Used			ADD EMISSION POINT	QUANTITY		
Pollutant No.	Name	M/C/E	Method Code	Designation or Description	Emission Point 1	T (Total) KG/Year	A (Accidental) KG/Year	F (Fugitive) KG/Year
					0.0	0.0	0.0	0.0

ADD NEW ROW | DELETE ROW * * Select a row by double-clicking on the Pollutant Name (Column B) then click the delete button

PRINT THIS SHEET

HELP

4.3 RELEASES TO WASTEWATER OR SEWER

[Link to previous years emissions data](#)

| PRTR# : W0238 | Facility Name : Ballymount MRF (Merrywell) | Filename : W0238_2017.xls | Re

30/03/2018 14:14

SECTION A : PRTR POLLUTANTS

OFFSITE TRANSFER OF POLLUTANTS DESTINED FOR WASTE-WATER TREATMENT OR SEWER					Please enter all quantities in this section in KGs			
POLLUTANT		METHOD			ADD EMISSION POINT	QUANTITY		
No. Annex II	Name	M/C/E	Method Code	Designation or Description	Emission Point 1	T (Total) KG/Year	A (Accidental) KG/Year	F (Fugitive) KG/Year
					0.0	0.0	0.0	0.0
ADD NEW ROW		DELETE ROW *		* Select a row by double-clicking on the Pollutant Name (Column B) then click the delete button				

SECTION B : REMAINING POLLUTANT EMISSIONS (as required in your Licence)

OFFSITE TRANSFER OF POLLUTANTS DESTINED FOR WASTE-WATER TREATMENT OR SEWER					Please enter all quantities in this section in KGs			
POLLUTANT		METHOD			ADD EMISSION POINT	QUANTITY		
Pollutant No.	Name	M/C/E	Method Code	Designation or Description	Emission Point 1	T (Total) KG/Year	A (Accidental) KG/Year	F (Fugitive) KG/Year
					0.0	0.0	0.0	0.0
ADD NEW ROW		DELETE ROW *		* Select a row by double-clicking on the Pollutant Name (Column B) then click the delete button				

PRINT THIS SHEET

HELP

4.4 RELEASES TO LAND

[Link to previous years emissions data](#)

PRTR#: W0238 | Facility Name : Ballymount MRF (Merrywell) | Filename : W0238_2017.xls | Return Year : 2017 |

30/03/2018 14:14

SECTION A : PRTR POLLUTANTS

RELEASES TO LAND				Please enter all quantities in this section in KGs		
POLLUTANT		METHOD		ADD EMISSION POINT	QUANTITY	
No. Annex II	Name	M/C/E	Method Code	Designation or Description	T (Total) KG/Year	A (Accidental) KG/Year
				Emission Point 1	0.0	0.0
ADD NEW ROW		DELETE ROW *		* Select a row by double-clicking on the Pollutant Name (Column B) then click the delete button		

SECTION B : REMAINING POLLUTANT EMISSIONS (as required in your Licence)

RELEASES TO LAND				Please enter all quantities in this section in KGs		
POLLUTANT		METHOD		ADD EMISSION POINT	QUANTITY	
Pollutant No.	Name	M/C/E	Method Code	Designation or Description	T (Total) KG/Year	A (Accidental) KG/Year
				Emission Point 1	0.0	0.0
ADD NEW ROW		DELETE ROW *		* Select a row by double-clicking on the Pollutant Name (Column B) then click the delete button		

PRINT THIS SHEET

HELP

5. ONSITE TREATMENT & OFFSITE TRANSFERS OF WASTE | PRTR#: W0238 | Facility Name : Ballymount MRF (Merrywell) | Filename : W0238_2017.xls | Return Year : 2017

30/03/2018 14:14

Please enter all quantities on this sheet in Tonnes

0

Transfer Destination	European Waste Code	Hazardous	Quantity (Tonnes per Year)	Description of Waste	Waste Treatment Operation	Method Used		Location of Treatment	Haz Waste : Name and Licence/Permit No of Next Destination Facility Non Haz Waste: Name and Licence/Permit No of Recover/Disposer	Haz Waste : Address of Next Destination Facility Non Haz Waste: Address of Recover/Disposer	Name and License / Permit No. and Address of Final Recoverer / Disposer (HAZARDOUS WASTE ONLY)	Actual Address of Final Destination i.e. Final Recovery / Disposal Site (HAZARDOUS WASTE ONLY)
						M/C/E	Method Used					
To Other Countries	15 01 01	No	2671.42	paper and cardboard packaging	R12	M	Weighed	Abroad	Aganail Ltd ,Broker	88 Cherrywood		
To Other Countries	15 01 01	No	48.28	paper and cardboard packaging	R12	M	Weighed	Abroad	BOOMERANG LIMITED,Broker	Cresent,Clondalkin,Dublin 22, ,Ireland		
To Other Countries	15 01 01	No	2613.36	paper and cardboard packaging	R12	M	Weighed	Abroad	Boost Recycling Ltd. UK,Broker	IPR,Ballymount rd,Ballymount,D 12,Ireland		
To Other Countries	15 01 01	No	130.7	paper and cardboard packaging	R12	M	Weighed	Abroad	Cellmark,Broker	Swaffhem road,47,Burwell Cambridgeshire,CB25 OAN,United Kingdom		
To Other Countries	15 01 01	No	76.84	paper and cardboard packaging	R12	M	Weighed	Abroad	LEINSTER ENVIRONMENTALS,Broker	Fairburn House ,44 Park Ln ,Allerton Bywater ,Castleford WF10 2AT ,United Kingdom		
To Other Countries	15 01 01	No	4045.8	paper and cardboard packaging	R12	M	Weighed	Abroad	Mark Lydon Papers,Broker/China Marwin Environmental Trading Ltd Broker - Ireland,broker	LEINSTER ENVIRONMENTALS, Hayne stown ,Dundalk ,Co. Louth,Ireland		
To Other Countries	15 01 01	No	2713.24	paper and cardboard packaging	R12	M	Weighed	Abroad	MLM Ltd ,Broker/China	12,The Triangle,Nottingham,NG2 1AE,United Kingdom		
To Other Countries	15 01 01	No	2339.28	paper and cardboard packaging	R12	M	Weighed	Abroad	SMURFIT KAPPA UK,Broker	7 Glyntown Heights, glanmire, cork, co. cork, Ireland		
To Other Countries	15 01 01	No	1510.26	paper and cardboard packaging	R12	M	Weighed	Abroad	Vanden Global Ltd,Broker	Wilmslow road,Adamson house Towers business park, ,Manchester,M20 2YY,United Kingdom		
To Other Countries	15 01 01	No	24.94	paper and cardboard packaging	R12	M	Weighed	Abroad	VIPA LAUSANNE S.A,Broker	Cunard Bldg , Water St ,Liverpool ,L3 1SF ,United Kingdom		
To Other Countries	15 01 01	No	19443.18	paper and cardboard packaging	R12	M	Weighed	Abroad		807 McKenny Centre ,660 Castle Park Road ,Kowloon Hong Kong, ,China		
										Galleries Benjamin-Constant 1 ,1002 Lausanne Switzerland		
										Noorderstraat 394 ,9611,AW ,Sappemeer		

Within the Country	15 01 01	No	155.72 paper and cardboard packaging	R12	M	Weighed	Offsite in Ireland	Irish Packaging Recycling, W0263-01	Ballymount Road, Walkinstown, Dublin, D12, Ireland
To Other Countries	15 01 02	No	20.96 plastic packaging	R12	M	Weighed	Abroad	Boost Recycling Ltd. UK, Broker	Swaffham road, 47, Burwell Cambridgeshire, CB25 OAN, United Kingdom
To Other Countries	15 01 02	No	37.4 plastic packaging	R12	M	Weighed	Abroad	LEINSTER ENVIRONMENTALS, Broker	ENVIRONMENTALS, Haynestown, Dundalk, Co. Louth, Ireland
To Other Countries	15 01 02	No	186.7 plastic packaging	R12	M	Weighed	Abroad	MLM Ltd., Broker/China	Wilmslow road, Adamson house, Towers business park, Manchester, M20 2YY, United Kingdom
To Other Countries	15 01 02	No	862.6 plastic packaging	R12	M	Weighed	Abroad	Monoworld Ltd., EAWML 75205	Rushden road, Sharnbrook, Bedfordshire, MK44 1ND, United Kingdom
To Other Countries	15 01 02	No	58.34 plastic packaging	R12	M	Weighed	Abroad	ROYDON POLYTHENE EXPORTS LTD, Broker	Unit 1, Junction Eco Park, Rake Lane, Swinton, M27 8LU, United Kingdom
To Other Countries	15 01 02	No	1441.53 plastic packaging	R12	M	Weighed	Abroad	Vanden Global Ltd, Broker	807 McKenny Centre, 660 Castle Park Road, Kowloon Hong Kong, China
To Other Countries	15 01 02	No	21.44 plastic packaging	R12	M	Weighed	Abroad	WELLMAN INTERNATIONAL LTD, Broker	Rosehill, Rosehill, Co. Cavan, Co. Cavan, Ireland
To Other Countries	15 01 02	No	2269.245 plastic packaging	R12	M	Weighed	Abroad	WRC Recycling, Broker	Auchans Farm, Johnstone, Renfrewshire Glasgow, PA6 7EE, United Kingdom
To Other Countries	15 01 04	No	215.18 metallic packaging	R12	M	Weighed	Abroad	Aganail Ltd., Broker	88 Cherrywood Crescent, Clondalkin, Dublin 22, Ireland
To Other Countries	15 01 04	No	24.24 metallic packaging	R12	M	Weighed	Abroad	Boost Recycling Ltd. UK, Broker	Swaffham road, 47, Burwell Cambridgeshire, CB25 OAN, United Kingdom
To Other Countries	15 01 04	No	92.5 metallic packaging	R12	M	Weighed	Abroad	Green Dragon Recycling Ltd., Broker	Corbally North, Glanmire Co. Cork, Ireland, Glanmire, Co. Cork, Ireland
To Other Countries	15 01 04	No	147.04 metallic packaging	R12	M	Weighed	Abroad	Marwin Environmental Trading Ltd Broker - Ireland, broker	7 Glyntown Heights, glanmire, cork, co. cork, Ireland

To Other Countries	15 01 04	No	120.68 metallic packaging	R12	M	Weighed	Abroad	Monoworld Ltd.,EAWML 75205	Rushden road,Sharnbrook,Bedfordshir e,MK44 1ND,United Kingdom
Within the Country	15 01 04	No	357.225 metallic packaging	R12	M	Weighed	Offsite in Ireland	Multimetals,WFP-WW-09- 0014-05	Murrough Ind. Est.,Bollarne,y,Wicklow,..Irel and
Within the Country	15 01 04	No	36.0 metallic packaging	R12	M	Weighed	Offsite in Ireland	SEHL,W0039-02	Ballymount ,Ballymount Cross,Tallagh,D24,Ireland
To Other Countries	15 01 04	No	94.06 metallic packaging	R12	M	Weighed	Abroad	TANDOM METALLURGICAL GROUPS LIMITED Total,Broker	Radnor Park Industrial Estate ,Congleton ,CW12 4XE ..United Kingdom Kiffa
To Other Countries	15 01 04	No	794.08 metallic packaging	R12	M	Weighed	Abroad	Wilton Waste Recycling Ltd.,Broker	Crosserlough,Ballyjamesduff ,Co.Cavan,..Ireland
To Other Countries	15 01 04	No	143.94 metallic packaging discarded electrical and electronic equipment other than those mentioned in	R12	M	Weighed	Abroad	WRC Recycling ,Broker	Auchans Farm,Johnstone ,Renfrewshire Glasgow,PA6 7EE,United Kingdom cappincur industrial estate,daingean road
Within the Country	20 01 36	No	13.5 20 01 21, 20 01 23 and 20 01 35	R12	M	Weighed	Offsite in Ireland	KMK T/A Weee Recycling,W0113-04	tullamore,offaly,..Ireland
Within the Country	20 03 01	No	39.02 mixed municipal waste	R12	M	Weighed	Offsite in Ireland	Dillon Waste & Recycling ,WFP-KY-10-001	The Kerries,Tralee,Co. Kerry,..Ireland Shepards drive,Carbane Industrial
To Other Countries	20 03 01	No	3109.92 mixed municipal waste	R12	M	Weighed	Abroad	Re gen Waste Ltd.,P0418/13A	Estate,Newry.,Co.Down BT356 jQ,United Kingdom Fassaroe,Bray,Co.
Within the Country	20 03 01	No	4425.8 mixed municipal waste	R12	M	Weighed	Offsite in Ireland	SEHL,W503-03	Wicklow,..Ireland Beuparc Business Park,Navan,Co.Meath,..Irela nd
Within the Country	20 03 01	No	26160.03 mixed municipal waste	R12	M	Weighed	Offsite in Ireland	Panda Waste Services,W0140-03	Losset ,Co. Monaghan,..Ireland
Within the Country	15 01 02	No	20.94 plastic packaging	R12	M	Weighed	Offsite in Ireland	ADN MATERIALS LTD,.	

ADD NEW ROW | DELETE ROW *

* Select a row by double-clicking the Description of Waste then click the delete button

