

Starrus Eco Holdings Ltd.

**Annual Environmental
Report (AER) 201)**
**Millennium MRF,
Ballycoolin, Dublin 11**
Licence: W0183-01

March 201*

**CDM
Smith**

Document Control Sheet

Client	Starrus Eco Holdings Limited (SEHL)			
Project	Annual Environmental Report (AER) Millennium Park Material Recovery Facility Waste Licence W0183-01			
Project No:	113988			
Report	2017 AER			
Document Reference:	DG_43 Millennium Park 2017 AER			
Version	Author	Checked	Reviewed	Date
1 Draft	B. Sexton	L. Foley	L. Foley	28/03/2018
1 Final	B. Sexton	L. Foley	L. Foley	29/03/2018

Distribution	Copy No.

TABLE OF CONTENTS

SECTION 1 INTRODUCTION	1
SECTION 2 SITE DESCRIPTION.....	2
SECTION 3 EMISSIONS MONITORING	4
SECTION 4 SITE DEVELOPMENT WORKS	8
SECTION 5 WASTE RECEIVED AND CONSIGNED FROM THE FACILITY.....	9
SECTION 6 ENVIRONMENTAL INCIDENTS AND COMPLAINTS	14
SECTION 7 ENVIRONMENTAL DEVELOPMENT	15
SECTION 8 OTHER REPORTS	20

LIST OF TABLES

Table 1 Waste Acceptance Categories & Quantities at Millennium Park.....	2
Table 2 Existing Onsite Plant and Machinery.....	3
Table 3 Emission Monitoring and Reporting Frequencies	4
Table 4 SE-1 Wastewater Monitoring Results 2017	5
Table 5 Noise Monitoring Results 2017	6
Table 6 Dust Monitoring Results August 2017.....	7
Table 7 Dust Monitoring Results September 2017	7
Table 8 Dust Monitoring Results December 2017	7
Table 9 Estimates of Resources used on site – 2016 & 2017.....	8
Table 10 Waste Received & Consigned 2017.....	9
Table 11 Waste Received & Consigned 2016.....	11
Table 12 Waste Received & Consigned 2004 - 2017	13
Table 13 Progression of 2017 Objectives and Targets.....	17
Table 14 Objectives and Targets for 2018	18

LIST OF APPENDICES

- Appendix 1: Sampling Locations
- Appendix 2: IMS
- Appendix 3: European Pollutant Release and Transfer Register

Section 1 Introduction

1.1 Reporting Period

This is the 2017 Annual Environmental Report (AER) for the Starrus Eco Holdings Ltd (SEHL), Material Recovery Facility (MRF) at Millennium Business Park, Ballycoolin, Dublin 11. It covers the period from 1 January 2017 to 31 December 2017.

1.2 IED Licence

The Environmental Protection Agency (EPA) transferred Licence No. W0183-01 to Starrus Eco Holdings Limited for its facility at Millennium Business Park, Grange, Ballycoolin, Co. Dublin on March 2014.

On 16 December 2015, the Licence was amended by the EPA and deemed to be an industrial emissions Licence (IED) granted under Part IV of the Environmental Protection Act 1992 as amended.

This report is prepared in accordance of condition 10.9 of the Licence, which requires and Annual Environmental Report (AER) for the facility to be submitted to the EPA.

Section 2 Site Description

2.1 Site Location

SEHL operate a MRF at the Millennium Business Park, Ballycoolin, Dublin 11. The facility is situated in West Dublin, approximately 5km north-west of Finglas. The surrounding area is characterised mainly by industrial and commercial land use.

2.2 Licenced Waste Activities

The facility is in operation since July 2006. It is currently licensed to accept and process 220,000 tonnes. All waste processing takes place inside the waste transfer building, as specified in Condition 4.1 of the Licence. The Agency has granted approval for the outdoor storage of wrapped bales of Solid Recovered Fuel (SRF).

2.2.1 Waste Types

The licensed waste types and quantities under Schedule A of the Licence are:

Table 1 Waste Acceptance Categories & Quantities at Millennium Park

Waste Type	Maximum (tonnes per annum) Phase I	Maximum (tonnes per annum) Phase II
Municipal	65,000	100,000
Commercial & Industrial	70,000	90,000
Construction & Demolition Waste	24,000	30,000
Total	159,000	220,000

No hazardous wastes or liquid wastes are accepted at the facility.

2.2.2 Waste Processing

The main processes carried out at the facility are:

Commercial & Industrial (C&I) Waste

Commercial and Industrial waste is delivered to the facility by skip vehicles. This waste is off loaded in dedicated bays inside the MRF building. Upon tipping, the waste is inspected for contamination and unsuitable materials; these are removed immediately into a quarantine area.

The C&I waste is initially sorted using a mechanical grab to remove large items such as timber, metal and oversized light materials, which are removed to other storage areas in the building. The recovered materials are sent to offsite facilities via articulated vehicles for recycling or recovery.

Construction & Demolition Waste (C&D)

C&D waste is tipped inside the MRF building in specific bays. Upon tipping, the waste is inspected for contamination and unsuitable materials; these are removed immediately into a quarantine area.

The C&D waste is initially sorted using a mechanical grab to remove large items such as timber, metal and large oversized rubble, which are removed to other storage areas in the building. The

recovered materials are sent to offsite facilities for recycling or recovery via articulated tipper vehicles. These have recently been removed and at present the site operates solely as a transfer station.

Mixed Solid Waste (MSW)

Mixed solid waste (MSW) is delivered to the facility by refuse collection vehicles. The MSW is tipped in dedicated bays inside the MRF building. The waste, upon tipping, is inspected for contamination and unsuitable materials. If any are found they are removed to the quarantine area.

Any large items or unsuitable materials are removed using the mechanical grab. The recovered materials are sent to offsite facilities via articulated vehicles for recovery.

In August 2014 an SEW was submitted and approved by the Agency. This allowed for the removal of the C&I and C&D processing lines and replacement of the two processing lines with specialist baling and shredding equipment for dry recyclables. These were recently removed and at present the site operates solely as a transfer station.

2.2.3 Plant and Machinery List

A list of the plant and machinery in use at the facility is presented in Table 2. The plant provides 100% duty capacity and 50% standby capacity for waste processing.

Table 2 Existing Onsite Plant and Machinery

No.	Plant	Model	Operational Capacity (tonnes per day)
2	Grab Handlers	Liebherr	400
1	Loading Shovel	Volvo	8640
1	Excavator	Kobelco	500
1	Excavator	Case	250
1	Mitsubishi Forktruck	Forktruck	-

Section 3 Emissions Monitoring

The monitoring required for the facility includes surface water, wastewater, dust and noise. All environmental emissions monitoring is carried out at the intervals and frequency specified in schedule D of the Licence, while reports presenting the results of this monitoring are also submitted to the Agency at various frequencies, in accordance with Schedule E of the Licence (Table 3).

Table 3 Emission Monitoring and Reporting Frequencies

Medium	Monitoring Frequency	Reporting Frequency
Surface Water	Quarterly	Quarterly
Wastewater	Every two months	Quarterly
Dust	Three times a year	Three times a year
Noise	Annually	Annually

Monitoring locations are shown on Drawing 001 in Appendix 1. An overview of the results of monitoring carried out at the facility in 2017 is presented in this Chapter.

3.1 Surface Water Monitoring

Following agreement with the Agency, surface water sampling was not carried out at the facility in 2017. This was due to ongoing issues with the Millennium Business Park storm water system, which was resulting in back flowing of storm water into the SEHL system.

3.2 Waste Water Monitoring

The wastewater discharge comes from vehicle washing, drainage from the materials recovery shed and yard area where waste processing and handling take place. It flows to a silt trap and oil interceptor before entering the municipal sewer system.

3.2.1 Monitoring Locations

Bi-monthly sewer monitoring was carried out at the monitoring point SE-1, as shown on Drawing 001.

3.2.2 Monitoring Parameters

Monitoring and analysis was carried out for the parameters listed in Schedule D of the Licence.

The full wastewater laboratory analysis was carried out by ALS laboratories.

3.2.3 Monitoring Results

The results for 2017 are presented in Table 4. ELVs set out in the Licence are also included in Table 4.

Table 4 SE-1 Wastewater Monitoring Results 2017

Parameter	Units	Feb-17	Apr-17	Jun-17	Aug-17	Oct-17	Dec-17	Emission
pH	pH units	7.7	7.2	6.46	7.4	7.1	7.3	6 -10
BOD	mg/l	76	57	311	22	53	25	6,000
COD	°C	637	513	622	186	389	112	12,000
Total Suspended Solids	mg/l	1,520	692	718	146	219	152	2,500
Fats, Oils and Greases	mg/l	8.89	29.9	40.6	36.5	34.1	7.62	100
Temperature	°C	10.2	10.1	11.8	10.6	9.9	8.9	42
Sulphates	mg/l	21.3	48.2	15.57	38.2	35.7	86.4	1,000
Ammoniacal Nitrogen	mg/l	65.6	6.97	12	1.52	1.25	0.68	100
Detergents	mg/l	0.24	0.54	0.35	<0.21	0.57	<0.21	100
Phosphates as P	mg/l	5.9	3.1	30.3	0.8	0.9	<0.6	100

N/A = None Available

3.2.4 Interpretation of Results

All levels detected in the reporting period were within the ELVs.

3.3 Noise Monitoring

Damian Brosnan Acoustics undertook annual noise monitoring on 5 July 2018. The monitoring was undertaken to measure and assess noise levels in accordance with Schedule D3 of the Licence. The measurements recorded have been used to determine compliance with the noise emission limits specified in Schedule C1 of the Licence. The noise emission limit specified in the Licence only applies to noise sensitive locations, with levels recorded at boundary locations not required to meet this limit.

Condition 6.5 of the Licence states that *“There shall be no clearly audible tonal component or impulsive component in the noise emissions from the activity at the noise sensitive locations.”*

Night-time monitoring was not carried out as the site is not operational during night-time hours and does not generate noise emissions during these hours.

3.3.1 Monitoring Locations

Daytime noise monitoring was undertaken at the four locations presented on Drawing 001. The monitoring locations include three onsite locations (N-1, N-2 and N-3) and one off-site noise sensitive location (NSL-1) as set out in Schedule D of the Licence.

3.3.2 Monitoring Results

Results of the noise monitoring carried out are summarised in Table 5.

Table 5 Noise Monitoring Results 2017

Location	Sample Time	Daytime			
		L _{Aeq} , 30 min (dB)	L _{A10} , 30 min (dB)	L _{A90} , 30 min (dB)	Specific L _{A90} , 30 min (dB)
N1	05/07/2018 15:00 – 15:30	50	50	43	<50
N2	05/07/2018 13:43 – 14:13	58	58	49	58
N3	05/07/2018 14:22 – 14:52	68	70	64	65
NSL1	05/07/2018 11:50 – 12:20	72	76	51	<49

3.3.3 Results Interpretation

L_{Aeq} 30 min levels recorded at the three boundary stations were 50-68 dB. Greenstar operations dominated at two of these locations. It is understood that noise limits specified in waste licence W0183-01 do not apply to these stations. At the offsite sensitive station NSL1, the only station to which the licence noise limits apply, the L_{Aeq} 30 min level measured was 72 dB. Greenstar emissions were not audible, and were therefore lower than the 55 dB daytime limit specified in licence W0183-01. SEHL operations did not give rise to tones or impulses at NSL1, thus complying with condition 5.5 of the Licence.

3.4 Dust Monitoring

Dust monitoring was carried out on three occasions in 2017. The Licence requires a minimum of three yearly monitoring events to take place. The three monitoring events took place in August, September and December 2017. The measurements recorded have been used to determine compliance with the dust emission limit (350 mg/m²/d) specified in Schedule C2 of the Licence.

Bergerhoff style gauges were used to determine total dust deposition levels at the site. Four gauges were set up so that the dust jars were at a height of at least 1.5 m above the ground and the jars were set in place during the monthly monitoring event. The samples were submitted to City Analysts Laboratories Ltd. for analysis of dust contents.

3.4.1 Monitoring Locations

The dust monitoring was carried out at four on-site locations (DS-01, DS-02, DS-03 and DS-04) in 2017. The locations of these monitoring points are shown on Drawing 001.

3.4.2 Monitoring Results

The results for organic, inorganic and total dust deposition for the three monitoring events which took place in August, September and December are presented in Table 6, Table 7, and Table 8 respectively. The dust emission limit set out in the Licence is also included in these tables.

Table 6 Dust Monitoring Results August 2017

Sampling Point	Total Dust	Organic Dust	Inorganic Dust
	August 2017		
	mg/m ² /day		
DS-01	26.31	20.76	5.55
DS-02	74.62	48.47	26.14
DS-03	10.38	5.11	5.27
DS-04	*	*	*
Limit			350

* dust jars contaminated with bird excrement

Table 7 Dust Monitoring Results September 2017

Sampling Point	Total Dust	Organic Dust	Inorganic Dust
	September 2017		
	mg/m ² /day		
DS-01	103.68	65.75	37.92
DS-02	72.86	24.63	18.23
DS-03	47.69	24.07	23.62
DS-04	74.50	52.96	21.54
Limit			350

Table 8 Dust Monitoring Results December 2017

Sampling Point	Total Dust	Organic Dust	Inorganic Dust
	December 2017		
	mg/m ² /day		
DS-01	58.23	29.73	28.50
DS-02	36.19	18.06	18.12
DS-03	38.26	22.05	16.21
DS-04	29.45	23.96	5.50
Limit			350

3.4.3 Interpretation of Results

No exceedances of the dust deposition limit of 350 mg/m²/day were evident from the monitoring, which took place during the 2017 reporting year.

Section 4 Site Development Works

4.1 Specified Engineering Works

No specified engineering works in accordance with those listed in Schedule B of the Licence were carried out during the 2017 reporting period.

4.2 Summary of Resource & Energy Consumption

Resources consumed at Millennium Business Park MRF include diesel fuel, electricity, oil (hydraulic, transmission, engine), truck wash detergent, water (mains supply), natural gas and anti-freeze. Table 9 presents an estimate of the resources used on-site during 2017 as well as 2016.

Table 9 Estimates of Resources used on site – 2016 & 2017

Resource	Quantities used 2016	Quantities used 2017
Diesel (litres)	62,950	46,213
Electricity (kWh)	645,699	652,562
Oils (hydraulic, transmission, engine) (litres)	1,500	1,300
Detergent (truck wash) (litres)	30	30
Water (mains)(litres)	8,069,000	11,913,000
Natural Gas (kWh)	52,276	31,843
Anti-Freeze (litres)	75	75

4.3 Tank & Pipeline Integrity Testing

Condition 3.13.3 of the Licence requires that tank, drum, pipeline and bund testing be carried out every three years on site.

Bund testing was undertaken in 2017. The testing indicated that all bunds tested were fit for purpose.

Section 5 Waste Received and Consigned from the Facility

The waste processing which takes place at the facility and the maximum quantity of waste which may be processed at the facility are outlined in Section 2 of this document.

A detailed description of the wastes received and consigned in 2017 is presented in the PRTR submission in Appendix 3.

Table 10 shows the quantities of wastes accepted and consigned for the reporting period. The total quantity of waste accepted was 194,431.75 tonnes and the total amount consigned was 189,235.65 tonnes. The records show that more waste was received at the site than was consigned from it. The difference is due to waste which remained onsite at the end of 2017 which will be consigned in 2018.

For comparative purposes, the quantity of waste received and consigned from 2004 to 2017 is presented in Table 12.

As per Condition 5.8 of the Licence, all waste consigned from the site went to authorised recovery and disposal facilities. A copy of the relevant Facility Permit or Waste Licences is retained on site for Agency inspection.

Table 10 Waste Received & Consigned 2017

EWC	Description	Waste In (tonnes)	Waste Out (tonnes)
020106	Equitation Waste	15.34	
100305	Waste Alumina	6.10	
130208	Waste oil		0.8
130503	Interceptor Sludge		8.7
150101	Cardboard Packaging	75.13	
150102	Plastic Packaging	180.66	268.44
150103	Wooden Packaging	153.27	39.98
150104	Aluminium	30.25	
150105	Compost Packaging	13.02	
150106	Mixed Packaging	17.69	69.04
150107	Glass Packaging	7.98	
150109	Textile	1.96	
150203	Absorbents	0.35	
160103	Tyres	4.50	30.22
160504	HAZ Gases Cylinders		5.02
160505	Gas Cylinders		0.70
160601	HAZ Battery Lead Acid		3.954
170107	C&D	59.06	19.56

EWC	Description	Waste In (tonnes)	Waste Out (tonnes)
170201	Wood		1,973.54
170302	Bituminous Material	7.60	7.66
170401	Copper	0.26	
170405	Steel	540.26	
170504	Soil and Stone	3,849.20	12,991.52
170605	Asbestos		0.38
170802	Gypsum materials	255.27	
170904	C&D Inert Mixed	24,128.72	33,158.08
190203	Back End Floc	2,980.44	
190801	Screenings	28.88	
190905	Resin	10.50	
191001	Metal	50.08	
191204	Plastic	10.36	10.36
191207	Wood	28.90	3,064.62
191210	Solid Recovered Fuel (SRF)	14,409.52	15,397.77
191212	C&I Dry Mixed	5,765.96	33,670.74
200101	Cardboard & Paper	90.34	
200102	Glass	142.68	
200108	Biodegradable Kitchen & Canteen Waste	8,622.81	7,964.93
200135	REC Electronics & Electrics	0.30	12.24
200136	White Goods - WEE	0.42	
200138	Wood	5,509.38	4,940.05
200139	Plastic		5.96
200140	Metal	1,001.13	4,327.24
200201	Green Biodegradable Waste	2,289.94	2,474.88
200301	MSW Municipal Mixed	61,689.32	67,160.35
200303	Street Cleaning	388.28	271.14
200307	Bulky Waste	62,065.90	1,357.66
	Total received	194,431.75	
	Total consigned		189,235.65
	Recovery		174,158.14
	Disposal		15,077.51
	Recovery Rate (%)		92

Table 11 Waste Received & Consigned 2016

EWC	Description	Waste In (tonnes)	Waste Out (tonnes)
101008	Casting cores and moulds from pouring	5.49	
150101	Paper and cardboard packaging	10,376.16	10,262.92
150102	Plastic packaging	1,057.32	989.75
150103	Wooden packaging	810.10	443.43
150104	Metallic packaging	25.43	2.80
150105	Composite packaging	15.51	
150106	Mixed packaging	5.40	3,272.59
150107	Glass Packaging	22.06	
150102	Shredded Plastics	3.28	
160504	Pressurised gas containers		1.20
170101	Concrete		24.60
170203	Plastic	30.07	29.52
170405	Iron and steel	1.20	
170411	Cables other than those mentioned in 17 04 10	0.38	
170504	Soils and stones other than those mentioned in 17 05 03	2,213.68	2,317.87
170604	Insulation materials other than those mentioned in 17 06 01 and 17 06 03	9.87	
170802	Gypsum-based construction materials other than those mentioned in 17 08 01	255.29	
170904	Mixed construction and demolition wastes other than those mentioned in 17 09 01, 17 09 02 and 17 09 03	1,281.97	1,489.90
190905	Saturated or spent ion exchange resins	5.41	
191201	Mixed Packaging	1.36	
191207	Wood	14.91	70.94
191209	Minerals (for example sand, stones)	1,185.10	440.03
191210	Combustible waste RDF	6,255.69	4,041.66
191212	Other wastes (including mixtures of materials) from mechanical treatment of wastes other than those mentioned in 19 12 11	1,126.30	2,570.78
200101	Paper and cardboard	15,772.33	
200102	Glass	10.85	
200108	Biodegradable kitchen and canteen waste	996.03	1,147.72
200111	Textiles	28.58	
200138	Wood other than that mentioned in 20 01 37	2,312.43	2,513.30
200139	Plastics	35.57	4.90
200140	Metals	941.04	1,323.00
200201	Biodegradable waste	1,796.04	1,536.99
200301	Mixed municipal waste	20,681.67	21,118.77
200303	Street-cleaning residues	545.97	280.20

EWC	Description	Waste In (tonnes)	Waste Out (tonnes)
200307	Bulky waste	19,331.65	14,309.54
	Total received	87,154.13	
	Total consigned		84,846.73
	Recovery		77,780.64
	Disposal		7,124.92
	Recovery Rate (%)		91

Table 12 Waste Received & Consigned 2004 - 2017

Description	Total Received	Total Consigned
2017	194,431.75	189,235.65
2016	87,154.13	84,900.67
2015	105,517.447	100,462.678
2014	80,987.80	79,850.41
2013	83,500.66	81,230.14
2012	92,484.12	87,448.73
2011	87,191	83,181
2010	74,694.50	68,868.59
2009	79,469.57	77,224.94
2008	133,813.88	129,366.26
2007	167,056.84	161,828.21
2006	79,570.21	80,725.68
2005	105,517.447	100,462.678
2004	80,987.80	79,850.41

Section 6 Environmental Incidents and Complaints

6.1 Incidents

There were two reportable incidents on site in 2017. Small fires in April and October were reported to the Agency. The incidents were fully investigated and closed out. No significant environmental damage occurred.

6.2 Register of Complaints

SEHL maintains a register of complaints received in accordance with Condition 10.4 of the Licence. A copy of all complaints and responses are retained on site.

No complaints were received in 2017.

Section 7 Environmental Development

7.1 Environmental Management System

An Integrated Management System (IMS) has been implemented by SEHL in accordance with the requirements of Occupational Health and Safety Assessment Series (OHSAS) 18001:2007 and International Standard Organisation (ISO) 14001:2004 in order to manage the health, safety and environmental performance of their business.

The IMS has been developed to incorporate continual improvement, while constantly ensuring that all requirements of the Licence conditions are taken into account. SEHL has prepared and effectively implement documented procedures and instructions in accordance with the requirements of both OHSAS 18001:2007 and ISO 14001:2015.

A list of environmental, management, operating and maintenance procedures have been developed by SEHL as part of the IMS. Details of these procedures are outlined in Appendix 2.

The status of objectives and targets which were previously identified for 2017 and the proposed objectives and targets for 2018 are presented in Table 13 and Table 14.

7.1.1 Site Management

The management and staffing structure is outlined below:

Name:	Kieran Connor
Role:	Director of Operations
Experience:	15 years' waste management experience and has completed the FAS Waste Management course equivalent
Name:	Graham Cassidy
Responsibility:	Site Supervisor (from March 2017)
Experience:	20 years' experience in waste management and has completed the FAS Waste Management course equivalent
Name:	Bebhinn Brennan
Role:	EHS Officer
Experience:	8 years' experience and has completed the FAS Waste Management course equivalent
Name:	Eanna Bailey

Role: Weighbridge Manager

Experience: Degree in Environmental Science

7.1.2 Staff Training

Manual handling training was provide to staff in 2017. Machine drivers received CSCS training in 2017.

7.2 Environmental Management Progression and Projected Programme

7.2.1 Progression of 2017 Objectives and Targets

The objectives and targets that were achieved during this reporting period are outlined in Table 7.1.

7.2.2 Projected 2018 Objectives and Targets

The projected targets and objectives for 2018 are presented in Table 7.2.

Table 13 Progression of 2017 Objectives and Targets

No.	Objective	Target	Responsibility	Time scale
1	Increase awareness of Odour Management on site and group wide	Specify Odour detection in Site Inspection Database (EF-10A) on a daily basis and generate actions as appropriate	Site Management/EHS	On-going
2	Waste storage practices	Review waste storage practices on each site to ensure that they are in line with Licence conditions, fire prevention and insurance recommendations	Site Management/EHS	On-going
3	Emergency response procedures - ER pack update	Review the Emergency Response Pack on each site and ensure that all information & equipment required in case of an emergency is available. Confirm that relevant staff training adequately addresses.	Site Management/EHS	On-going
4	CRAMP, ELRA & Financial Provision	CRAMP, ELRA & Financial Provision to be reviewed	EHS team	Completed
5	Waste acceptance, classification & records	EWC training for all weighbridge ops. Centralisation of all Licences & permits incl NWCPs for hauliers.	EHS team	Completed
6	Pipeline integrity & bund testing	Arrange for integrity testing of pipelines and bunds as per Licence requirements.	Site Management/EHS	Completed
7	Energy Audit	Completed energy audit as per amended Licence conditions	Site Management/EHS	Completed
8	Fire risk assessment	Implement FRA recommendations	Site management/EHS team	Completed
9	Submit Licence review		EHS team	Completed
10	Replace wind sock		Site management	Completed
11	Storm water network	Investigate blockage in SW pipeline once external network operational again	Site management/EHS team	Not yet possible
12	Bund tests	Bund tests due	EHS team	Completed

Table 14 Objectives and Targets for 2018

No.	Objective	Target	Responsibility	Time scale
1	Nuisance management	Ensure odour/noise/dust management plans are followed and potential new sources are identified	Site management	Q1 - Q4
2	Fire prevention	Implement recs from Fire Risk Assessments Update ERP & APP where applicable Maintain fire detection equipment	Site management/EHS team	Q1 - Q4
3	Waste storage	Review waste storage practices on each site to ensure that they are in line with Licence conditions, fire prevention and insurance recommendations	Site management/EHS team	Q1 - Q4
4	ISO 14001 transition	Transition ISO 14001 to the 2015 standard	EHS team	Q2
5	Paperless project	Implement plans for a paperless office	All staff	Q3-Q4
6	Resource tracking	Sites to track energy usage and other resources in order to conserve wherever possible	Site management/EHS team	Q1 - Q4
7	Hardstand & site infrastructure	Review hardstand and formulate repair plan as required. Record using EF11.	Site management/EHS team	Q1 - Q4
8	Cover bunds	Install shelter over bunded area	Site management	Q2-Q3

7.3 Communications Programme

A commitment has been made by SEHL to make its Environmental, Health & Safety Policy and other relevant records available to the public and interested parties. To facilitate this, a Communications Programme has been established by SEHL.

The following records are maintained:

- Environmental, Health & Safety Policy;
- IED Licence;
- Licence Application and Review documentation;
- Monitoring records;
- Complaints File; and
- EPA Correspondence File.

7.4 Nuisance Controls

Greenstar has contracted a vermin control company, Pestguard, to carry out nuisance control at the facility. Pestguard undertake a 6-weekly review of the vermin activity on-site along with an inspection of the bait traps that are located throughout the facility.

7.5 Waste Recovery

The facility is designed to increase the recycling of biodegradable materials and reduce the volume of waste disposed to landfill. Of the 194,431.75 tonnes of waste consigned from the facility approximately 92% was sent for recovery.

7.6 DMP, ELRA & Financial Provision

A Decommissioning Management Plan (DMP) and Environmental Liabilities Risk Assessment (ELRA) including Financial Provision (FP) have been developed for the site and were submitted to the Agency in 2013. These have both been approved by the Agency and provision is in place with their agreement. A review and update of both reports was completed in 2017.

7.7 Rainwater and Wastewater Volumes

No rainwater was reused at the facility in 2017. The grey water reuse system has been de-commissioned. As it is not possible to give an exact figure for the amount of wastewater produced during 2017, an estimate of 6,000 m³ of water was used by the truck wash during the year.

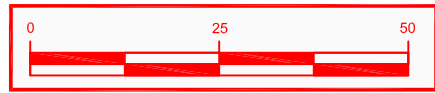
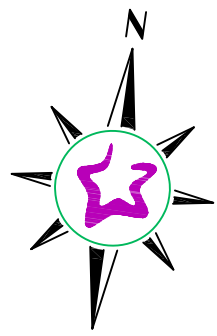
Wastewater discharges to the municipal sewer serving the industrial estate. The sewer water then flows to a waste water treatment plant operated by Fingal County Council.

Section 8 Other reports

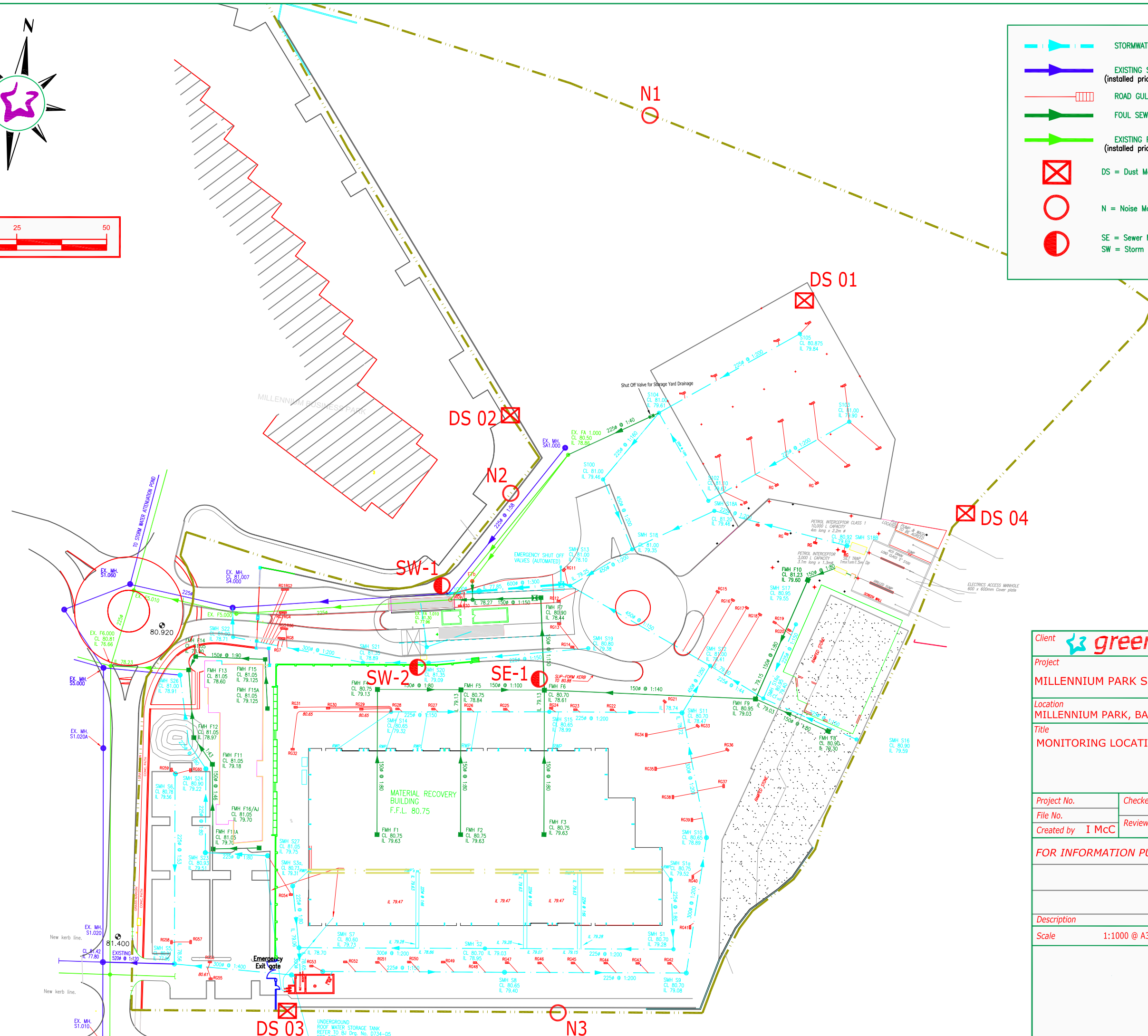
8.1 European Pollutant Release and Transfer Register

A copy of the EPRTTR return submitted to the Agency via the web-based data reporting system is included in Appendix 3.

Appendix 1: Sampling Locations



	STORMWATER DRAINAGE
	EXISTING STORMWATER DRAINAGE (installed prior to facility construction)
	ROAD GULLIES AND CONNECTIONS
	FOUL SEWER DRAINAGE
	EXISTING FOUL SEWER DRAINAGE (installed prior to facility construction)
	DS = Dust Monitoring Point
	N = Noise Monitoring Point
	SE = Sewer Monitoring Point SW = Storm Water Monitoring Point



Client			
Project MILLENNIUM PARK SERVICES AS-BUILT			
Location MILLENNIUM PARK, BALLYCOOLIN, DUBLIN 11			
Title MONITORING LOCATIONS			
Project No.	Checked by	Drawing No.	
File No.	Reviewed by	001	
Created by I MCC			
FOR INFORMATION PURPOSES		23/06/14	A
Description		Date	Version
Scale 1:1000 @ A3	Date	June 2015	

CL OF OVERHEAD ESB CABLES

ESB Pylon

UNDERGROUND ROOF WATER STORAGE TANK REFER TO BU Drg. No. D734-05 FOR DETAILS

Appendix 2: Integrated Management System



Doc. No.: Control	Revision No.: As Shown	Issue Date: As Shown
Approved By:	David Naughton – Group Environmental Manager	Page 1 of 5
	Joe Nicholson – Group H&S Manager	

Integrated Procedures - IP

IP-01	Document & Record Control Procedure	Rev 01, 22/05/17
IP-02	Health & Safety Risk Assessment Procedure	Rev 01, 22/05/17
IP-03	Environmental Aspects & Impacts Procedure	Rev 01, 22/05/17
IP-04	Legal & Regulatory Requirements Procedure	Rev 01, 22/05/17
IP-05	Objectives, Targets & Management Programmes Procedure	Rev 01, 22/05/17
IP-06	Competence, Training & Awareness Procedure	Rev 01, 22/05/17
IP-07	Communication & Consultation Procedure	Rev 01, 22/05/17
IP-08	Monitoring, Measurement & Improvement Procedure	Rev 01, 22/05/17
IP-09	Evaluation of Compliance Procedure	Rev 01, 22/05/17
IP-10	Non Conformances, Corrective/Preventive Actions Procedure	Rev 01, 22/05/17
IP-11	Internal Audit Procedure	Rev 01, 22/05/17
IP-12	Management Review Procedure	Rev 01, 22/05/17
IP-13	Control of Contractors/Visitors Procedure	Rev 01, 22/05/17
IP-14	Health & Safety & Environmental Monitoring	Rev 01, 22/05/17
IP-15	Emergency Preparedness & Response Procedure	Rev 01, 22/05/17
IP-16	Fire Prevention Procedure	Rev 01, 22/05/17
IP-17	Bin Washing Procedure	Rev 01, 22/05/17
IP-18	Accident Prevention Procedure	Rev 01, 22/05/17
IP-19	Fuel Procedure for Tanks & Mobile Plant	Rev 01, 22/05/17

Safety Procedures - SP

SP-01	Permit to Work Procedure	Rev 01, 22/05/17
SP-02	Maintenance & Calibration Procedure	Rev 01, 22/05/17
SP-03	Mobile Plant Procedure	Rev 01, 22/05/17
SP-04	Fork Truck Procedure	Rev 01, 22/05/17
SP-05	Operation of Fixed Plant Procedure	Rev 01, 22/05/17
SP-06	Lock Out / Tag Out Procedure	Rev 01, 22/05/17
SP-07	Health & Safety Notification Procedure	Rev 01, 22/05/17
SP-08	MSW Shredder routine Maintenance & Clearing of Blockages Procedure (SCGT)	Rev 01, 22/05/17
SP-09	Weighbridge & Tipping Procedure (SCGT)	Rev 01, 22/05/17
SP-10	Cleaning of Washing Bay (Greenogue)	Rev 01, 22/05/17



Doc. No.: Control	Revision No.: As Shown	Issue Date: As Shown
Approved By:	David Naughton – <i>Group Environmental Manager</i>	Page 2 of 5
	Joe Nicholson – <i>Group H&S Manager</i>	

Environmental Procedures - EP		
EP-01	Office Waste & Energy Management Procedure	Rev 01, 22/05/17
EP-02	Decommissioning and Aftercare Procedure	Rev 01, 22/05/17
EP-03	Environment Communications Procedure	Rev 01, 22/05/17
EP-04	Waste Permits & Licences Procedure	Rev 01, 22/05/17
EP-05	Waste Acceptance Procedure	Rev 01, 22/05/17
EP-06	Unacceptable Waste Procedure	Rev 01, 22/05/17
EP-07	Waste & Material Storage Procedure	Rev 01, 22/05/17
EP-08	Waste Processing Procedure	Rev 01, 22/05/17
EP-09	Site Infrastructure Procedure	Rev 01, 22/05/17
EP-10	Nuisance Management Procedure (Site Specific)	(Site Specific) Rev 01, 22/05/17
EP-11	Civic Amenity Site Procedure	Rev 01, 22/05/17

Doc. No.: Control	Revision No.: As Shown	Issue Date: As Shown
Approved By:	Malcolm Dowling – Group Compliance Manager	Page 3 of 5

Amendment History

Date	Amendment No.	Procedure No:	Revision No:	Comment	Authorised By
05.07.10	01	All	01	Initial Issue	M.D & O.C
13.09.10	02	EP-03	02	Issue of Incident Reports	M.D
20.09.10	03	IP-10	02	Env issues not logged on WIMS Database	M.D
29.10.10	04	IP-13	02	Use of M&M equipment by contractors	M.D & O.C
29.10.10	05	IP-14	02	Use of M&M equipment by contractors	M.D & O.C
29.10.10	06	SP-02	02	Inclusion of Maintenance Schedule	M.D & O.C
05.11.10	07	IP-04	02	Inclusion of other requirements	S.B & O.C
01.02.11	08	SP-08	01	Inclusion of new procedure	O.C
01.02.11	09	IP-10	03	Inclusion of SP-08	O.C
01.02.11	10	IP-15	02	Removal of SF-022	O.C
01.02.11	11	Contents	As shown	EP-10 Site Specific	M.D & O.C
01.02.11	12	IP-06	02	Addressing Agency Staff needs	M.D & O.C
01.02.11	13	Circ List	02	Amendment to document control	M.D & O.C
04.04.11	14	SP-02	03	Inclusion of Site Specific Maintenance schedules	O.C
07.06.11	15	IP-11	02	Inclusion of H&S & Env Internal Audit Schedules	M.D & O.C
14/09/11	16	EP-02	02	Inclusion of decommissioning of plant/equipment	S.B
15/09/11	17	IP-09	02	Inclusion of Statutory Inspections	O.C
01/12/11	18	SP-09	01	Inclusion of new procedure for SCGT	O.C
01/12/11	19	SP-10	01	Inclusion of new procedure for SCGT	O.C
03/05/12	20	SP-01	02	Amendment to remove SF 028	O.C
05/05/12	21	SP-11	01	Inclusion of a new procedure for Greenogue	O.C
28/05/12	22	IP-11	03	General Amendments to internal audit procedure	M.D & O.C
08/06/12	23	IP-13	03	Grammatical amendment	M.D & O.C
15/04/13	24	IP-06	03	Agency staff – sign-off record sufficient proof of training. TMS optional	M.D & O.C

Doc. No.: Control	Revision No.: As Shown	Issue Date: As Shown
Approved By:	Malcolm Dowling – Group Compliance Manager	Page 4 of 5

Date	Amendment No.	Procedure No:	Revision No:	Comment	Authorised By
30/06/13	25	IP-16	01	Inclusion of new procedure	M.D.
09/09/13	26	IP-03	02	Use of Scannell Software Solutions (EnviroManager) instead of IF-03A	M.D & O.C
09/09/13	27	IP-04	30	Use of Scannell Software Solutions (EnviroManager) instead of IF-03A	M.D & O.C
09/09/13	28	IP-05	02	Use of Scannell Software Solutions (EnviroManager) instead of IF-03A	M.D & O.C
16/10/13	29	EP-03	03	Introduction of EPA ALDER Portal	K.B
28/04/14	30	All EP's & IP's	01	Change of Company name and review of all Integrated and Env procedures	M.D & O.C
28/04/14	31	SP's	01	Change of Company name and review of all safety procedures including re-numbering & deletion of Motor Claim Notification Procedure – SP 08	O.C
06/05/15	32	EP-09	02	Ref to new form EF-11 added	SS
21/01/16	33	IP-05/IP-07/IP-12	02	Meeting frequency refs updated	SS
14/11/16	34	IP-18	02	Amended as per EPA instruction	SS
11/01/17	35	IP-19	01	New addition	SS
22/05/17	36	All EP's, SP's & IP's	01	Review of all procedures	DN & JN



Doc. No.: Control	Revision No.: As Shown	Issue Date: As Shown
Approved By:	Malcolm Dowling – <i>Group Compliance Manager</i>	Page 5 of 5

Circulation List

The Integrated Procedures Manual is a controlled document. Copies of the Procedures Manual are available as follows;

Copy Number	Holder
1 (Master Copy)	Group EHS Managers
2	Greenstar EnviroManager
3	Greenstar Intranet – Electronic Copy

Appendix 3: European Pollutant Release and Transfer Register



Environmental Protection Agency

| PRTR# : W0183 | Facility Name : Starrus Eco Holdings Limited (Millenium Business Park) | Filename : W0183_2017.xls | Return Year : 2017 |

[Guidance to completing the PRTR workbook](#)

PRTR Returns Workbook

Version 1.1.19

REFERENCE YEAR	2017
-----------------------	------

1. FACILITY IDENTIFICATION

Parent Company Name	Starrus Eco Holdings Limited
Facility Name	Starrus Eco Holdings Limited (Millenium Business Park)
PRTR Identification Number	W0183
Licence Number	W0183-01

Classes of Activity

No.	class_name
-	Refer to PRTR class activities below

Address 1	Millennium Business Park
Address 2	Grange
Address 3	Ballycoolin
Address 4	Dublin 11
	Dublin
Country	Ireland
Coordinates of Location	-6.34044 53.4084
River Basin District	IEEA
NACE Code	3832
Main Economic Activity	Recovery of sorted materials
AER Returns Contact Name	sara smyth
AER Returns Contact Email Address	Sara.Smyth@greenstar.ie
AER Returns Contact Position	environmental manager
AER Returns Contact Telephone Number	353 (01) 274 6236
AER Returns Contact Mobile Phone Number	
AER Returns Contact Fax Number	353 (01) 282 9525
Production Volume	0.0
Production Volume Units	
Number of Installations	0
Number of Operating Hours in Year	0
Number of Employees	20
User Feedback/Comments	There was an increase in the levels of sulphate detected in 2017 at the Waste water outlet. The levels of BOD detected in the waste water decreased in 2017.
Web Address	

2. PRTR CLASS ACTIVITIES

Activity Number	Activity Name
50.1	General
5(c)	Installations for the disposal of non-hazardous waste
50.1	General

3. SOLVENTS REGULATIONS (S.I. No. 543 of 2002)

Is it applicable?	
Have you been granted an exemption ?	
If applicable which activity class applies (as per Schedule 2 of the regulations) ?	
Is the reduction scheme compliance route being used ?	

4. WASTE IMPORTED/ACCEPTED ONTO SITE

[Guidance on waste imported/accepted onto site](#)

Do you import/accept waste onto your site for on-site treatment (either recovery or disposal activities) ?	
------------------------------------------------------------------------------------------------------------	--

This question is only applicable if you are an IPPC or Quarry site

4.1 RELEASES TO AIR

[Link to previous years emissions data](#)

SECTION A : SECTOR SPECIFIC PRTR POLLUTANTS

POLLUTANT		RELEASES TO AIR			Please enter all quantities in this section in KGs				
No. Annex II	Name	M/C/E	METHOD		Emission Point 1	QUANTITY			
			Method Code	Designation or Description		T (Total) KG/Year	A (Accidental) KG/Year	F (Fugitive) KG/Year	
						0.0	0.0	0.0	0.0

* Select a row by double-clicking on the Pollutant Name (Column B) then click the delete button

SECTION B : REMAINING PRTR POLLUTANTS

POLLUTANT		RELEASES TO AIR			Please enter all quantities in this section in KGs				
No. Annex II	Name	M/C/E	METHOD		Emission Point 1	QUANTITY			
			Method Code	Designation or Description		T (Total) KG/Year	A (Accidental) KG/Year	F (Fugitive) KG/Year	
						0.0	0.0	0.0	0.0

* Select a row by double-clicking on the Pollutant Name (Column B) then click the delete button

SECTION C : REMAINING POLLUTANT EMISSIONS (As required in your Licence)

POLLUTANT		RELEASES TO AIR			Please enter all quantities in this section in KGs				
Pollutant No.	Name	M/C/E	METHOD		Emission Point 1	QUANTITY			
			Method Code	Designation or Description		T (Total) KG/Year	A (Accidental) KG/Year	F (Fugitive) KG/Year	
						0.0	0.0	0.0	0.0

* Select a row by double-clicking on the Pollutant Name (Column B) then click the delete button

Additional Data Requested from Landfill operators

For the purposes of the National Inventory on Greenhouse Gases, landfill operators are requested to provide summary data on landfill gas (Methane) flared or utilised on their facilities to accompany the figures for total methane generated. Operators should only report their Net methane (CH4) emission to the environment under T(total) KG/yr for Section A: Sector specific PRTR pollutants above. Please complete the table below:

Landfill: Starrus Eco Holdings Limited (Millenium Business Park)

Please enter summary data on the quantities of methane flared and / or utilised	T (Total) kg/Year	M/C/E	Method Used		Facility Total Capacity m3 per hour
			Method Code	Designation or Description	
Total estimated methane generation (as per site model)	0.0				N/A
Methane flared	0.0				0.0 (Total Flaring Capacity)
Methane utilised in engine/s	0.0				0.0 (Total Utilising Capacity)
Net methane emission (as reported in Section A above)	0.0				N/A

4.2 RELEASES TO WATERS

[Link to previous years emissions data](#)

| PRTR#: W0183 | Facility Name : Starrus Eco Holdings Limited (Millenium Business Park) | Filename : W0183_2017.xls | Return Year : 2017 |

29/03/2018 15:01

SECTION A : SECTOR SPECIFIC PRTR POLLUTANTS

Data on ambient monitoring of storm/surface water or groundwater, conducted as part of your licence requirements, should NOT be submitted under AER / PRTR Reporting as this only c

RELEASES TO WATERS					Please enter all quantities in this section in KGs			
POLLUTANT		M/C/E	Method Used		QUANTITY			
No. Annex II	Name		Method Code	Designation or Description	Emission Point 1	T (Total) KG/Year	A (Accidental) KG/Year	F (Fugitive) KG/Year
					0.0	0.0	0.0	0.0

* Select a row by double-clicking on the Pollutant Name (Column B) then click the delete button

SECTION B : REMAINING PRTR POLLUTANTS

RELEASES TO WATERS					Please enter all quantities in this section in KGs			
POLLUTANT		M/C/E	Method Used		QUANTITY			
No. Annex II	Name		Method Code	Designation or Description	Emission Point 1	T (Total) KG/Year	A (Accidental) KG/Year	F (Fugitive) KG/Year
					0.0	0.0	0.0	0.0

* Select a row by double-clicking on the Pollutant Name (Column B) then click the delete button

SECTION C : REMAINING POLLUTANT EMISSIONS (as required in your Licence)

RELEASES TO WATERS					Please enter all quantities in this section in KGs			
POLLUTANT		M/C/E	Method Used		QUANTITY			
Pollutant No.	Name		Method Code	Designation or Description	Emission Point 1	T (Total) KG/Year	A (Accidental) KG/Year	F (Fugitive) KG/Year
					0.0	0.0	0.0	0.0

* Select a row by double-clicking on the Pollutant Name (Column B) then click the delete button

SECTION A : PRTR POLLUTANTS

OFFSITE TRANSFER OF POLLUTANTS DESTINED FOR WASTE-WATER TREATMENT OR SEWER					Please enter all quantities in this section in KGs			
POLLUTANT		METHOD			QUANTITY			
No. Annex II	Name	M/C/E	Method Used		Emission Point 1	T (Total) KG/Year	A (Accidental) KG/Year	F (Fugitive) KG/Year
			Method Code	Designation or Description				
					0.0	0.0	0.0	0.0

* Select a row by double-clicking on the Pollutant Name (Column B) then click the delete button

SECTION B : REMAINING POLLUTANT EMISSIONS (as required in your Licence)

OFFSITE TRANSFER OF POLLUTANTS DESTINED FOR WASTE-WATER TREATMENT OR SEWER					Please enter all quantities in this section in KGs			
POLLUTANT		METHOD			QUANTITY			
Pollutant No.	Name	M/C/E	Method Used		Emission Point 1	T (Total) KG/Year	A (Accidental) KG/Year	F (Fugitive) KG/Year
			Method Code	Designation or Description				
238	Ammonia (as N)	M	PER	Based on estimate of water used in wheel wash. Analysis is ISO accredited.	88.02	88.02	0.0	0.0
303	BOD	M	PER	Based on estimate of water used in wheel wash. Analysis is ISO accredited.	544.0	544.0	0.0	0.0
306	COD	M	PER	Based on estimate of water used in wheel wash. Analysis is ISO accredited.	2459.0	2459.0	0.0	0.0
240	Suspended Solids	M	PER	Based on estimate of water used in wheel wash. Analysis is ISO accredited.	3447.0	3447.0	0.0	0.0
314	Fats, Oils and Greases	M	PER	Based on estimate of water used in wheel wash. Analysis is ISO accredited.	157.61	157.61	0.0	0.0
308	Detergents (as MBAS)	M	PER	Based on estimate of water used in wheel wash. Analysis is ISO accredited.	2.55	2.55	0.0	0.0
343	Sulphate	M	PER	Based on estimate of water used in wheel wash. Analysis is ISO accredited.	49.2	49.2	0.0	0.0

5. ONSITE TREATMENT & OFFSITE TRANSFERS OF WASTE

| PRTR#: W0183 | Facility Name: Starrus Eco Holdings Limited (Millenium Business Park) | Filename: W0183_2017.xls | Return Year: 2017 |

29/03/2018 15:01

Please enter all quantities on this sheet in Tonnes

0

Transfer Destination	European Waste Code	Hazardous	Quantity (Tonnes per Year)	Description of Waste	Waste Treatment Operation	Method Used		Location of Treatment	Haz Waste: Name and Licence/Permit No of Next Destination Facility	Haz Waste: Name and Licence/Permit No of Recover/Disposer	Haz Waste: Address of Next Destination Facility	Non Haz Waste: Address of Recover/Disposer	Name and License / Permit No. and Address of Final Recoverer / Disposer (HAZARDOUS WASTE ONLY)	Actual Address of Final Destination i.e. Final Recovery / Disposal Site (HAZARDOUS WASTE ONLY)
						M/C/E	Method Used							
Within the Country	13 02 08	Yes	0.8	other engine, gear and lubricating oils	R3	M	Weighed	Offsite in Ireland	RILTA,W0192-03,Rilta Environmental Limited ,Block 402 Grant's Drive ,Greenogue Business Park ,Rathcoole County Dublin,,Ireland	Rilta Environmental Limited ,Block 402 Grant's Drive ,Greenogue Business Park ,Rathcoole County Dublin,,Ireland	Rilta Environmental Limited ,Block 402 Grant's Drive ,Greenogue Business Park ,Rathcoole County Dublin,,Ireland	Rilta Environmental Limited ,Block 402 Grant's Drive ,Greenogue Business Park ,Rathcoole County Dublin,,Ireland	Rilta Environmental Limited ,Block 402 Grant's Drive ,Greenogue Business Park ,Rathcoole County Dublin,,Ireland	Rilta Environmental Limited ,Block 402 Grant's Drive ,Greenogue Business Park ,Rathcoole County Dublin,,Ireland
Within the Country	13 05 03	Yes	8.7	interceptor sludges	R3	M	Weighed	Offsite in Ireland	RILTA,W0192-03,Rilta Environmental Limited ,Block 402 Grant's Drive ,Greenogue Business Park ,Rathcoole County Dublin,,Ireland	Rilta Environmental Limited ,Block 402 Grant's Drive ,Greenogue Business Park ,Rathcoole County Dublin,,Ireland	Rilta Environmental Limited ,Block 402 Grant's Drive ,Greenogue Business Park ,Rathcoole County Dublin,,Ireland	Rilta Environmental Limited ,Block 402 Grant's Drive ,Greenogue Business Park ,Rathcoole County Dublin,,Ireland	Rilta Environmental Limited ,Block 402 Grant's Drive ,Greenogue Business Park ,Rathcoole County Dublin,,Ireland	Rilta Environmental Limited ,Block 402 Grant's Drive ,Greenogue Business Park ,Rathcoole County Dublin,,Ireland
To Other Countries	15 01 02	No	135.34	plastic packaging	R13	M	Weighed	Abroad	Cloughwater Plastics,-		BT43 6SZ,united kingdom Ballymount Road Walkinstown Dublin 12 Dublin,-,-,Ireland			
Within the Country	15 01 02	No	7.08	plastic packaging	R13	M	Weighed	Offsite in Ireland	IPR,W0263-01					
Within the Country	15 01 02	No	13.4	plastic packaging	D5	M	Weighed	Offsite in Ireland	Knockharley Landfill Ltd,W0165-02					
Within the Country	15 01 02	No	101.62	plastic packaging	R13	M	Weighed	Offsite in Ireland	Leinster Environmental/Eco WM Ltd ,WFP-LH-09-0004-01					
To Other Countries	15 01 02	No	11.0	plastic packaging	R13	M	Weighed	Abroad	Van Werven NI,-					
Within the Country	15 01 03	No	39.98	wooden packaging	R13	M	Weighed	Offsite in Ireland	Starrus Eco Holdings Ltd,W0053-03					
Within the Country	15 01 06	No	41.16	mixed packaging	R13	M	Weighed	Offsite in Ireland	Nurendale Limited,W0261-02					
Within the Country	15 01 06	No	27.88	mixed packaging	R13	M	Weighed	Offsite in Ireland	IPR,W0263-01					
Within the Country	16 01 03	No	30.22	end-of-life tyres	R13	M	Weighed	Offsite in Ireland	IPR,W0263-01					
Within the Country	16 05 04	Yes	0.52	halons containing dangerous substances	R4	M	Weighed	Offsite in Ireland	calor gas,-				calor gas,-	Long Mile Rd ,Drinnagh ,Dublin,-,Ireland
Within the Country	16 05 04	Yes	4.5	gases in pressure containers (including halons) containing dangerous substances	R4	M	Weighed	Offsite in Ireland	BOC Gases,-				BOC Gas Dublin,,Bluebell,,Dublin 12,,Ireland	Bluebell,,Dublin 12,,Ireland
Within the Country	16 05 05	No	0.34	gases in pressure containers (including halons) containing dangerous substances other than those mentioned in 16 05 04	R4	M	Weighed	Offsite in Ireland	calor gas,-					
Within the Country	16 05 05	No	0.36	gases in pressure containers other than those mentioned in 16 05 04	R4	M	Weighed	Offsite in Ireland	Flo Gas,-					
Within the Country	16 06 01	Yes	3.954	lead batteries	R4	M	Weighed	Offsite in Ireland	KMK Metals,NWCPO-08-10607-02				KMK Metals Recycling Ltd,W0113-03,Cappincur Industrial Estate,Daingean Road,Tullamore,Offaly,Ireland	Cappincur Industrial Estate,Daingean Road,Tullamore,Offaly,Ireland

Within the Country	17 01 07	No	mixture of concrete, bricks, tiles and ceramics other than those mentioned in 17 19.56 01 06	R13	M	Weighed	Offsite in Ireland	Starrus Eco Holdings Ltd,W0053-03	Fassaroe,Bray,Co. Wicklow,..,Ireland 83 Belfast Road,Nutts Corner,Crumlin,Antrim,united kingdom		
To Other Countries	17 02 01	No	1973.54 wood	R13	M	Weighed	Abroad	McKinstry, LN/13/45	Mullaghrone Quarry,Platin and Cruicerath Townlands		
Within the Country	17 03 02	No	bituminous mixtures containing other than 7.66 those mentioned in 17 03 01	R10	M	Weighed	Offsite in Ireland	Roadstone Ltd,WFP-MH-11-0003-01	Donore County Meath Meath,..,Ireland Belgard		
Within the Country	17 05 04	No	soil and stones other than those mentioned 2086.1 in 17 05 03	R10	M	Weighed	Offsite in Ireland	Roadstone Wood Limited,WFP-DS-11-0005-01	Quarry,Fortunestown Dublin 24,..,Ireland		
Within the Country	17 05 04	No	soil and stones other than those mentioned 102.66 in 17 05 03	R13	M	Weighed	Offsite in Ireland	Starrus Eco Holdings Ltd,W0053-03	Fassaroe,Bray,Co. Wicklow,..,Ireland		
Within the Country	17 05 04	No	soil and stones other than those mentioned 245.92 in 17 05 03	R10	M	Weighed	Offsite in Ireland	Breffni Group Plant Hire,WFP/MH/11/0003/01	Mullaghrone,..,Meath,Ireland		
Within the Country	17 05 04	No	soil and stones other than those mentioned 9782.36 in 17 05 03	R10	M	Weighed	Offsite in Ireland	Behans Land Restoration Limited,W0247-01	Blackhall Soil Recovery Facility ,Blackhall ,Punchestown Naas County Kildare,..,ireland		
Within the Country	17 05 04	No	soil and stones other than those mentioned 774.48 in 17 05 03	R10	M	Weighed	Offsite in Ireland	Roasdstone,W0277-03 RILTA,W0192-03,Rilta Environmental Limited ,Block 402 Grant's Drive ,Greenogue Business Park ,Rathcoole County Dublin,..,Ireland	Finglas Dublin 11,..,ireland	RILTA,W0192-03,Rilta Environmental Limited ,Block 402 Grant's Drive ,Greenogue Business Park ,Rathcoole County Dublin,..,Ireland	Rilta Environmental Limited ,Block 402 Grant's Drive ,Greenogue Business Park ,Rathcoole County Dublin,..,Ireland
Within the Country	17 06 05	Yes	construction materials containing asbestos 0.38 (18)	D14	M	Weighed	Offsite in Ireland	Starrus Eco Holdings Ltd,W0053-03	Fassaroe,Bray,Co. Wicklow,..,Ireland		
Within the Country	17 09 04	No	mixed construction and demolition wastes other than those mentioned in 17 09 01, 17 51.8 09 02 and 17 09 03	R13	M	Weighed	Offsite in Ireland	Starrus Eco Holdings Ltd,W0053-03	Nurendale (Rathdinagh) , Rathdrinagh ,Beauparc ,Navan County Meath, Ireland		
Within the Country	17 09 04	No	mixed construction and demolition wastes other than those mentioned in 17 09 01, 17 33106.28 09 02 and 17 09 03	R13	M	Weighed	Offsite in Ireland	Panda,W0140-02	Ballynagran,Coolbeg & Kilcandra,Co. Wicklow,..,Ireland		
Within the Country	19 12 04	No	10.36 plastic and rubber	D5	M	Weighed	Offsite in Ireland	Knockharley Landfill Ltd,W0165-02	Fassaroe,Bray,Co. Wicklow,..,Ireland		
Within the Country	19 12 07	No	3051.34 wood other than that mentioned in 19 12 06	R13	M	Weighed	Offsite in Ireland	Starrus Eco Holdings Ltd,W0053-03	Wicklow,..,Ireland		
Within the Country	19 12 07	No	13.28 wood other than that mentioned in 19 12 06	R3	M	Weighed	Offsite in Ireland	Clonmel Waste Disposal Ltd ,WP-008-02	Lawlesstown , Clonmel ,Co. Tipperary ,..,ireland		
Within the Country	19 12 10	No	25.7 combustible waste (refuse derived fuel)	R13	M	Weighed	Offsite in Ireland	Panda,W0140-02	Nurendale (Rathdinagh) , Rathdrinagh ,Beauparc ,Navan County Meath, Ireland		
Within the Country	19 12 10	No	4310.24 combustible waste (refuse derived fuel)	R1	M	Weighed	Offsite in Ireland	irish cement,P0030-06	Platin Works ,Platin ,Drogheda ,County Meath,..,ireland		
Within the Country	19 12 10	No	9161.29 combustible waste (refuse derived fuel)	R1	M	Weighed	Offsite in Ireland	Lagan Cement,P0487-05	Killaskillen,Kinnegad,..,Meath, Ireland		
Within the Country	19 12 10	No	1261.2 combustible waste (refuse derived fuel)	R1	M	Weighed	Offsite in Ireland	irish cement,P0030-06	Platin Works ,Platin ,Drogheda ,County Meath,..,ireland		
Within the Country	19 12 10	No	639.34 combustible waste (refuse derived fuel) other wastes (including mixtures of materials) from mechanical treatment of wastes other than those mentioned in 19 12	R1	M	Weighed	Offsite in Ireland	Quinn Cement,P0378-02	Scotchtown ,Ballyconnell ,County Cavan,..,Ireland		
Within the Country	19 12 12	No	22.04 11	R13	M	Weighed	Offsite in Ireland	Starrus Eco Holdings Ltd,W0053-03	Fassaroe,Bray,Co. Wicklow,..,Ireland		

Within the Country	19 12 12	No	31807.8	11 other wastes (including mixtures of materials) from mechanical treatment of wastes other than those mentioned in 19 12	R13	M	Weighed	Offsite in Ireland	Panda,W0140-02	Nurendale (Rathdinagh) , Rathdrinagh ,Beauparc ,Navan County Meath.,Ireland		
Within the Country	19 12 12	No	1840.9	11 other wastes (including mixtures of materials) from mechanical treatment of wastes other than those mentioned in 19 12	R13	M	Weighed	Offsite in Ireland	Drogheda Port Company ,W0052-01	Stagrennan Polder ,Marsh Road , Stagrennan , Drogheda Co Louth.,Ireland		
Within the Country	20 01 08	No	306.28	biodegradable kitchen and canteen waste	R13	M	Weighed	Offsite in Ireland	Nurendale Limited,W0261-02	Cappagh Road ,Cappogue , Finglas ,Dublin 11 ,Ireland Ballybeg Composting Facility		
Within the Country	20 01 08	No	1809.42	biodegradable kitchen and canteen waste	R3	M	Weighed	Offsite in Ireland	Acorn Recycling,WCP-KK-12- 583-01	, Littleton Co. Tipperary,-,- ,ireland		
Within the Country	20 01 08	No	548.46	biodegradable kitchen and canteen waste	R3	M	Weighed	Offsite in Ireland	Clonmel Waste Disposal Ltd ,WP-008-02	Lawlesstown , Clonmel ,Co. Tipperary ,- ,ireland		
Within the Country	20 01 08	No	29.04	biodegradable kitchen and canteen waste	R3	M	Weighed	Offsite in Ireland	Enrich Environmental,WMP 2004/57	Kilcock Co. Kildare,,,,,Ireland Donegal Road ,Pettigo ,Co Donegal ,Ireland,Ireland		
Within the Country	20 01 08	No	4919.72	biodegradable kitchen and canteen waste	R3	M	Weighed	Offsite in Ireland	Envirogrind Ltd,WP0405	,Ireland,Ireland		
Within the Country	20 01 08	No	352.01	biodegradable kitchen and canteen waste	R3	M	Weighed	Offsite in Ireland	O'Toole Composting,W0284- 01	Ballinrane Fenagh County Carlow,-,-,-,ireland		
Within the Country	20 01 35	Yes	12.24	discarded electrical and electronic equipment other than those mentioned in 20 01 21 and and 20 01 23 containing hazardous components	R4	M	Weighed	Offsite in Ireland	KMK Metals,NWCPO-08- 10607-02	Cappincur Ind. Estate , Daingean Road ,Tullamore,- ,ireland	KMK Metals Recycling Ltd,W0113-03,Cappincur Industrial Estate,Daingean Road,Tullamore,Offaly,Irelan d	Cappincur Industrial Estate,Daingean Road,Tullamore,Offaly,Ireland
Within the Country	20 01 38	No	3272.769	wood other than that mentioned in 20 01 37	R13	M	Weighed	Offsite in Ireland	Starrus Eco Holdings Ltd,W0053-03	Fassaroe,Bray,Co. Wicklow,,Ireland		
Within the Country	20 01 38	No	13.28	wood other than that mentioned in 20 01 37	R13	M	Weighed	Offsite in Ireland	Nurendale Limited,W0261-02	Cappagh Road , Cappogue , Finglas ,Dublin 11 ,Ireland		
Within the Country	20 01 38	No	1654.0	wood other than that mentioned in 20 01 37	R3	M	Weighed	Offsite in Ireland	Clonmel Waste Disposal Ltd ,WP-008-02	Lawlesstown , Clonmel ,Co. Tipperary ,- ,ireland		
Within the Country	20 01 39	No	1.2	plastics	R13	M	Weighed	Offsite in Ireland	IPR,W0263-01	Ballymount Road Walkinstown Dublin 12 Dublin,-,-,-,Ireland		
Within the Country	20 01 39	No	4.76	plastics	R13	M	Weighed	Offsite in Ireland	IPR,W0263-01	Ballymount Road Walkinstown Dublin 12 Dublin,-,-,-,Ireland		
Within the Country	20 01 40	No	11.92	metals	R4	M	Weighed	Offsite in Ireland	IPR,W0263-01	Ballymount Road Walkinstown Dublin 12 Dublin,-,-,-,Ireland		
Within the Country	20 01 40	No	1.2	metals	R4	M	Weighed	Offsite in Ireland	KMK Metals,NWCPO-08- 10607-02	Cappincur Ind. Estate , Daingean Road ,Tullamore,- ,ireland		
Within the Country	20 01 40	No	4174.44	metals	R4	M	Weighed	Offsite in Ireland	Davis Recycling Ltd.,W0134- 01	10 The Anchorage Business Park,Charlotte Quay,Dublin 4,,Ireland		
Within the Country	20 01 40	No	139.68	metals	R4	M	Weighed	Offsite in Ireland	Multi Metals,WFP-WW-09- 0014-01	,,Blessington,Co Wicklow ,Ireland		
Within the Country	20 02 01	No	2299.34	biodegradable waste	R3	M	Weighed	Offsite in Ireland	Enrich Environmental,WMP 2004/57	Kilcock Co. Kildare,,,,,Ireland Donegal Road ,Pettigo ,Co Donegal ,Ireland,Ireland		
Within the Country	20 02 01	No	175.54	biodegradable waste	R3	M	Weighed	Offsite in Ireland	Envirogrind Ltd,WP0405	,Ireland,Ireland		
Within the Country	20 03 01	No	180.9	mixed municipal waste	R13	M	Weighed	Offsite in Ireland	Starrus Eco Holdings Ltd,W0053-03	Fassaroe,Bray,Co. Wicklow,,Ireland		
Within the Country	20 03 01	No	1614.58	mixed municipal waste	R13	M	Weighed	Offsite in Ireland	South Dublin County Council,W0003-03	Ballymount Baling Station ,Ballymount Road ,Walkinstown ,Dublin 12.,Ireland		
Within the Country	20 03 01	No	45.56	mixed municipal waste	R13	M	Weighed	Offsite in Ireland	Panda,W039-02	Ballymount Cross,Tallaght,Dublin 24,- ,ireland		

Within the Country	20 03 01	No	75.26 mixed municipal waste	R13	M	Weighed	Offsite in Ireland	Nurendale Limited,W0261-02	Cappagh Road ,Cappogue , Finglas ,Dublin 11 ,Ireland
Within the Country	20 03 01	No	2112.64 mixed municipal waste	D5	M	Weighed	Offsite in Ireland	Bord na Mona.,W0201-03	Drehid Landfill,Carbury,Co Kildare,Ireland
Within the Country	20 03 01	No	7147.32 mixed municipal waste	D5	M	Weighed	Offsite in Ireland	Ballynagran Landfill Ltd,W0165-02	Ballynagran,Coolbeg & Kilcandra,Co. Wicklow,,Ireland
Within the Country	20 03 01	No	15.3 mixed municipal waste	R13	M	Weighed	Offsite in Ireland	Clonmel Waste Disposal Ltd ,WP-008-02	Lawlesstown , Clonmel ,Co. Tipperary ,-,ireland
Within the Country	20 03 01	No	45649.53 mixed municipal waste	R1	M	Weighed	Offsite in Ireland	Dublin Waste to Energy Limited ,W0232-01	Poolbeg ,Pigeon House Road ,Poolbeg Peninsula ,Dublin 4.,Ireland
Within the Country	20 03 01	No	250.56 mixed municipal waste	R13	M	Weighed	Offsite in Ireland	IPR,W0263-01	Ballymount Road Walkinstown Dublin 12 Dublin.,-,-,Ireland
Within the Country	20 03 01	No	4532.85 mixed municipal waste	R1	M	Weighed	Offsite in Ireland	Indaver IWMF,W0167-02	Carlanstown,,Duleek,Co Meath,Ireland
Within the Country	20 03 01	No	5499.15 mixed municipal waste	D5	M	Weighed	Offsite in Ireland	Knockharley Landfill Ltd,W0165-02	Ballynagran,Coolbeg & Kilcandra,Co. Wicklow,,Ireland
Within the Country	20 03 01	No	15.32 mixed municipal waste	R13	M	Weighed	Offsite in Ireland	Quality Recycling Ltd ,NWCPO-12-11065-02	Unit 6 Rosehill Industrial Estate ,Ballinacurra ,Midleton ,Co. Cork ,Ireland
Within the Country	20 03 01	No	21.38 mixed municipal waste	R13	M	Weighed	Offsite in Ireland	Re-Gen,-	Unit 7 ,Shepherds Drive ,Carnbane Industrial Estate ,Newry BT35 6JQ Co. Down ,United Kingdom
Within the Country	20 03 03	No	271.14 street-cleaning residues	D5	M	Weighed	Offsite in Ireland	Bord na Mona.,W0201-03	Drehid Landfill,Carbury,Co Kildare,Ireland
Within the Country	20 03 07	No	276.56 bulky waste	R13	M	Weighed	Offsite in Ireland	Starrus Eco Holdings Ltd,W0053-03	Fassaroe,Bray,Co. Wicklow,,Ireland
Within the Country	20 03 07	No	8.84 bulky waste	R13	M	Weighed	Offsite in Ireland	Panda,W039-02	Ballymount Cross,Tallaght,Dublin 24,-,ireland
Within the Country	20 03 07	No	104.98 bulky waste	R13	M	Weighed	Offsite in Ireland	Nurendale Limited,W0261-02	Cappagh Road ,Cappogue , Finglas ,Dublin 11 ,Ireland
Within the Country	20 03 07	No	916.86 bulky waste	R13	M	Weighed	Offsite in Ireland	Panda,W0140-02	Nurendale (Rathdrinagh) , Rathdrinagh ,Beauparc ,Navan County Meath.,Ireland
Within the Country	20 03 07	No	23.12 bulky waste	D5	M	Weighed	Offsite in Ireland	Ballynagran Landfill Ltd,W0165-02	Ballynagran,Coolbeg & Kilcandra,Co. Wicklow,,Ireland
Within the Country	20 03 07	No	17.68 bulky waste	R13	M	Weighed	Offsite in Ireland	Clonmel Waste Disposal Ltd ,WP-008-02	Lawlesstown , Clonmel ,Co. Tipperary ,-,ireland
Within the Country	20 03 07	No	9.62 bulky waste	R13	M	Weighed	Offsite in Ireland	IPR,W0263-01	Ballymount Road Walkinstown Dublin 12 Dublin.,-,-,Ireland

* Select a row by double-clicking the Description of Waste then click the delete button

[Link to previous years waste data](#)

[Link to previous years waste summary data & percentage change](#)

[Link to Waste Guidance](#)



**CDM
Smith**[®]
cdmsmith.com