

Unit 15
Melbourne Business Park
Model Farm Road
Cork



E:info@ocallaghanmoran.com
www.ocallaghanmoran.com
T: 021 434 5366

ANNUAL ENVIRONMENTAL REPORT
STARRUS ECO HOLDINGS LTD
MATERIALS RECOVERY FACILITY
SIX CROSS ROADS BUSINESS PARK
WATERFORD
LICENCE NO. W0177-03
JANUARY 2017 – DECEMBER 2017

Prepared For: -

Starrus Eco Holdings Ltd.,
Fassaroe,
Bray,
Co. Wicklow.

Prepared By: -

O' Callaghan Moran & Associates,
Unit 15 Melbourne Business Park,
Model Farm Road,
Cork.

29th March 2018

Project	Annual Environmental Report 2017			
Client	Starrus Eco Holdings Ltd. W0177-03			
Report No	Date	Status	Prepared By	Reviewed By
0480304	26/03/2018	Draft	Martina Gleeson PhD	Jim O'Callaghan MSc
	29/03/2018	Final	Martina Gleeson PhD	Jim O'Callaghan MSc

TABLE OF CONTENTS

	<u>PAGE</u>
1. INTRODUCTION.....	1
2. SITE DESCRIPTION.....	2
2.1 SITE LOCATION AND LAYOUT	2
2.2 WASTE MANAGEMENT ACTIVITIES	2
2.2.1 Waste Types & Processes.....	2
2.2.2 Plant List.....	4
3. EMISSION MONITORING	5
3.1 SURFACE WATER MONITORING	5
3.2 FOUL WATER MONITORING	7
3.3 GROUNDWATER MONITORING.....	8
3.4 NOISE MONITORING	9
3.5 DUST MONITORING	10
4. SITE DEVELOPMENT WORKS	12
4.1 ENGINEERING WORKS.....	12
4.2 SUMMARY OF RESOURCE & ENERGY CONSUMPTION	12
4.3 BUND INTEGRITY TESTING.....	12
5. WASTE RECEIVED AND CONSIGNED FROM THE FACILITY.....	13
6. ENVIRONMENTAL INCIDENTS AND COMPLAINTS	16
6.1 INCIDENTS.....	16
6.2 REGISTER OF COMPLAINTS.....	16
7. ENVIRONMENTAL DEVELOPMENT & CONTROL.....	17
7.1 ENVIRONMENTAL MANAGEMENT PROGRAMME REPORT	17
7.1.1 Site Management Structure	17
7.1.2 Staff Training.....	18
7.2 ENVIRONMENTAL MANAGEMENT PROGRAMME.....	18
7.2.1 Schedule of Objectives 2017	18
7.2.2 Schedule of Objectives 2018	18
7.3 COMMUNICATIONS PROGRAMME	18
7.4 REPORT FINANCIAL PROVISION.....	21
7.5 NUISANCE CONTROLS	21
7.6 WASTEWATER VOLUMES	21
8. OTHER REPORTS.....	22
8.1 EUROPEAN POLLUTANT RELEASE AND TRANSFER REGISTER REGULATION	22

APPENDIX 1	-	European Pollutant Release and Transfer Register
APPENDIX 2	-	Procedures List

1. INTRODUCTION

This is the 2017 Annual Environmental Report (AER) for the Starrus Eco Holdings Ltd., (SEHL) Materials Recovery Facility (MRF) at Six Cross Roads Business Park, Waterford (W0177-03) and covers the reporting period January 2017 to December 2017.

The content is based on Schedule F of the Waste Licence and the report format follows guidelines set in the “Guidance Note for Annual Environmental Report” issued by the Environmental Protection Agency (Agency)¹. Cognisance was also taken of the Agency AER Draft Guidance Document and AER Information Templates issued by the Agency in January 2012².

¹ EPA (Environmental Protection Agency) 1999 Waste Licensing – Draft Guidance on Environmental Management Systems and Reporting to the Agency

² EPA (Environmental Protection Agency) 2012 Draft AER Guidance Document

2. SITE DESCRIPTION

2.1 Site Location and Layout

The site is located at Six Cross Roads Business Park, Carriganard, approximately 3.5 km southwest of Waterford City Centre. The area to the west of the facility is mainly farmland. The nearest residential area is the Ballybeg housing estate, which is approximately 500 m to the north. The facility encompasses approximately 9,300 m² and is accessed through the Six Cross Roads Business Park. The western site boundary is a cul-de-sac, the southern and eastern boundaries are formed by the Six Cross Roads Business Park and the northern boundary by the closed Waterford City Compost Facility.

There are two waste processing buildings. The Main Building houses the offices and Commercial and Industrial waste (C&I) recycling activities and bulk waste transfer. The Lean-To, which is to the west of the Main Building, is used for recovered timber, green waste and bulky waste processing and additional bale storage. The open yard areas are paved and are used for external waste storage bays (C&D, glass, and metals), skip storage, truck parking and a vehicle washing area. A civic amenity area is established in the southwest of the facility.

2.2 Waste Management Activities

The facility is licensed to accept and process 80,000 tonnes of waste per annum, comprising household waste, construction and demolition waste (C&D) and commercial and industrial waste (C&I).

2.2.1 Waste Types & Processes

The facility is licensed to accept the following waste types and quantities, as specified in Schedule A of the licence: -

- Household (25,000 tonnes)
- Commercial & Industrial (50,000 tonnes)
- Construction & Demolition (5,000 tonnes)

No hazardous wastes are accepted. The maximum amount of each waste type accepted, may be altered with the prior agreement of the Agency as long as the total maximum tonnage is not exceeded.

The key processes carried out are: -

- Segregation of recyclable materials (paper, cardboards, plastic, wood, metals, glass);
- Recycling of hard plastics
- Baling of recyclable materials;
- Bulking up of Municipal Solid Waste;
- Segregation and bulking of C&D waste;
- Transfer of recovered and residual materials to appropriately licensed recycling, recovery and disposal outlets;

Household Waste

Residual, or black bin household waste, arrives in refuse collection vehicles and is transferred from the vehicles into large bulk transporters for consignment to an appropriately licensed landfill. Source segregated household dry recyclables are baled and stored prior to transfer to off-site permitted/licensed recycling facilities.

Commercial and Industrial Waste

Both mixed and segregated commercial waste is collected from commercial sources. Commercial waste containing recyclable material (paper, cardboard, glass, metal, green waste and wood) is delivered both by permitted third party hauliers and by SEHL vehicles. Plastic, card and paper are baled and stored prior to transfer to a suitable permitted/licensed off-site recycling outlet. Biodegradable wastes suitable for composting are sent to an offsite composting facility. The remaining non-recyclable material is bulked and sent to appropriately licensed landfills. Hard plastics (PVC and Polypropylene) are shredded to form raw materials for plastic goods manufacturers.

C&D Waste

Waste loads include mixed construction and demolition wastes and soil and stone. The material arrives in skips of varying sizes. The loads are inspected and then processed. The majority of the incoming C&D material is recovered and sent off-site either for re-use, or recycling. The non-recyclable materials are transferred to a licensed landfill.

2.2.2 Plant List

A list of the plant in use at the facility is in Table 2.1. The plant provides 100% duty and 50% standby for waste processing.

Table 2.1 Plant List – 2017

No.	Plant	Model	Operational Capacity tpd	Standby Capacity tpd
1	Loading Shovel	Volvo L90F	200	120
1	Excavating Grab	Volvo	150	100
2	Forklift	Jungheinrich	2.5 t	
1	Timber shredder	Doppstadt AK430	20t/hour	
1	Road Sweeper	Iveco 180E23	500 lts	
1	Recycling Bailer	PAAL PGS15050	15/20T/hour	
1	Plastic granulator	Enginplast BA800	600kgs/hour	
1	Confidential shredder	Linder	15KW	
1	Loading Shovel	Liebherr		120

3. EMISSION MONITORING

The monitoring specified in the licence includes surface water, wastewater, groundwater, dust and noise monitoring. The monitoring locations are shown on Figure 3.1. The results are submitted to the Agency at quarterly intervals and this section presents an overview of the monitoring completed in the reporting period..

3.1 Surface Water Monitoring

The facility's surface water drainage system collects run-off from paved areas and roof rainwater and discharges at separate locations to a culverted stream serving the Business Park.

The original agreed monitoring locations were SW-1, SW-2, SW-3 and SW-4. In June 2012 the Agency approved the replacement of SW-1 and 2 with SW-5, which is the point at which the combined discharge point to the stream for the storm sewers from the east and south of the site and the sewers that take run-off from the Main Recycling Building and Offices.

SW-3 is downstream of an oil interceptor on the drain that takes runoff from the western yard, and is a separate discharge point. SW-4 is at the discharge point to the stream for run-off roof of the Lean To in the north western section of the site. The locations are shown on Figure 3.1.

The monitoring results are in Tables 3.1 to 3.3. Due to dry conditions in some months no surface water samples were obtained. The results include the proposed warning and action levels developed by SEHL in Q1 2010. The warning level for ammonia was exceeded at SW-5 on the 25th June.. The warning level for electrical conductivity was exceeded at SW-3 on the 20th September and 19th October. The action levels were not exceeded.

Table 3.1 Surface Water Monitoring Results – SW-3

Parameter	Units	6 th Feb	6 th Mar	15 th May	28 th Jun	19 th Jul	5 th Sept	20 th Sept	19 th Oct	22 nd Nov	Warning Levels	Action Level
Ammonia	mg/l	0.08	0.09	0.09	0.28	0.85	0.04	<0.03	1.37	0.61	2.0	4.4
Electrical Conductivity	mS/cm	0.089	0.086	0.205	0.069	0.124	0.065	0.578	0.640	0.353	0.466	0.774

Table 3.2 Surface Water Monitoring Results SW-4

Parameter	Units	6 th Feb	6 th Mar	15 th May	28 th Jun	19 th Jul	5 th Sept	20 th Sept	19 th Oct	22 nd Nov	Warning Levels	Action Level
Ammonia	mg/l	0.08	0.05	0.05	0.68	0.71	0.26	<0.03	0.23	0.15	2.0	4.4
Electrical Conductivity	mS/cm	0.039	0.026	0.157	0.019	0.026	0.008	0.050	0.185	0.084	0.466	0.774

Table 3.3 Surface Water Monitoring Results SW-5

Parameter	Units	6 th Feb	6 th Mar	15 th May	28 th Jun	19 th Jul	5 th Sept	20 th Sept	19 th Oct	22 nd Nov	Warning Levels	Action Level
Ammonia	mg/l	0.57	0.55	0.36	2.58	0.83	1.55	<0.03	1.51	0.04	2.0	4.4
Electrical Conductivity	mS/cm	0.077	0.170	0.181	0.086	0.113	0.034	0.050	0.241	0.391	0.466	0.774

3.2 Foul water Monitoring

The wastewater discharge (vehicle cleaning and run off from hard-standing at the entrance to the main recycling building) passes through a petrol/oil interceptor before discharging to the Six Cross Roads Business Park sewer before ultimately connecting to the municipal sewer. Flow is measured using a continuous flow meter.

The discharge is rainfall dependent and due to dry conditions in some months no waste water samples were obtained.

The wastewater sampling is carried out at location FW-1, as shown on Figure 3.1. FW-1 is downstream of the interceptor and the continuous flow meter. The monitoring results are presented in Table 3.4, which also includes the emission limit values (ELV) set in the Licence.

The ELVs for BOD, COD and TSS were exceeded in September, while the ELV for TSS was also exceeded in November.

Table 3.4 Foul water Monitoring Results 2017

Parameter	Units	Mar	May	Jul	Sept	Oct	Nov	Emission Limit	Emission Limit (Grab Sample)*
pH	pH Units	6.59	6.95	6.70	6.47	7.01	8.69	6 – 9	6-9
BOD	mg/l	110	279	305	1,022	6	296	400	480
COD	mg/l	169	892	523	1,700	27	593	1,100	1,320
TSS	mg/l	112	828	13	832	83	2,850	300	360
Oils, Fats & Greases	mg/l	1.20	5.7	1.2	<0.01	<0.01	2.490	10	12
Surfactants (MBAS)	mg/l	<0.2	0.6	0.9	1.8	3.2	1.3	30	36

* Condition 4.1.2 (i) For parameters other than pH and temperature, no grab sample value shall exceed 1.2 times the emission limit value.

3.3 Groundwater Monitoring

Groundwater monitoring is not specified in the licence, however it is carried out annually at two monitoring wells (BH-1 and BH-3) as agreed with the Agency. BH-1 is off-site and up-gradient in the adjoining closed Waterford City Council Composting facility (W0234-01) and BH-3 is on-site as shown on Figure 3.1.

There are no emission limits or trigger levels set in the licence and so the results are compared to the Interim Guideline Values (IGV) on groundwater quality published by the Agency and the Groundwater Regulations Threshold Value (GTV), which were introduced in 2010 (S.I. 9 of 2010).

The IGV represent typical background or unpolluted conditions; however levels higher than the IGV may occur naturally depending on the local geological and hydrogeological conditions. While the GTV are more appropriate for large scale abstraction wells used for potable supply, they can be used to assess the significance of contamination where present in non-potable groundwater supplies. Because GTVs have not been established for all of the parameters monitored, the relevant IGV was used for comparative purposes.

The results are shown on Table 3.5 and indicate that there is no evidence that site activities are impacting on groundwater quality. The IGVs or GTVs were not exceeded at either location in August 2016. The monitoring carried out showed that the groundwater quality is good.

High levels of suspended solids are present in each well. Based on the borehole logs, the well depths range from 22 to 27m bgl (meters below ground level). BH-1 is exclusively in the subsoils, while BH-3 straddles the subsoils and the bedrock, which is a siltstone. The subsoils in BH-1 are described as very fine grained alluvial deposits, while in BH-3 they are described as sand with small elements of clay. There is a gravel pack around the well pipe but no filter sock on the slotted section. Given the absence of a filter sock and the nature of the subsoils, it is not unexpected that suspended solids present in the groundwater are being drawn into the well pipe during purging. They are naturally occurring, are not indicative of contamination and are of no environmental significance.

Table 3.5 Groundwater Monitoring Results – November 2017

Parameter	Units	BH-1	BH-3	GTV	IGV
BOD	mg/l	<1	<1	-	-
Dissolved Oxygen	mg/l	7	8	-	NAC
Oils, Fats & Greases	mg/l	<0.01	<0.01	-	-
Total Phosphorus	mg/l	690	797	-	-
Ammoniacal Nitrogen	mg/l	0.04	<0.03	0.065 - 0.175	-
Conductivity	mS/cm	0.601	0.506	1.875	-
DRO	mg/l	<0.01	<0.01	-	0.01
Aliphatic Hydrocarbons	mg/l	<0.01	<0.01	-	-
Undecane	mg/l	<0.01	<0.01	-	-
Total Suspended Solids	mg/l	3654	4436	-	-

3.4 Noise Monitoring

The annual noise survey was conducted in August. The monitoring locations include three boundary locations (N1 – N3) and two off site noise sensitive locations (NS1 and NS2). The survey was conducted when the site was fully operational and confirmed that noise emissions fully complied with the licence and that the facility is not impacting negatively on the nearest sensitive receptors. A summary of the noise results is shown on Table 3.6.

Table 3.6 Noise Monitoring Results 2017

Station	Date	Time	Wind vector	L _{Aeq} 30 min dB	L _{AF10} 30 min dB	L _{AF90} 30 min dB	Specific L _{Aeq} 30 min dB
N1	03.07.17	1030-1100	0	66	69	56	66
	<p>Facility: Local plant and truck activity in yard and building intermittently dominant. During lulls, extraction system in E building continuously clearly audible.</p> <p>Extraneous: No noise audible apart from crows.</p> <p>Specific L_{Aeq} T determination: Leq representative.</p>						
N2	03.07.17	0955-1025	0	65	67	53	≤65
	<p>Facility: Intermittent truck, car and van movements through entrance area dominant when present, occasionally idling for extended periods on weighbridge. Plant operations within site audible at low level during lulls in traffic activity.</p> <p>Extraneous: Activity at adjacent premises (garden tool engines and power washing) occasionally dominant. During lulls in louder sources, R710 traffic continuously audible in background.</p> <p>Specific L_{Aeq} T determination: Leq influenced by power tool engines offsite. Thus ≤Leq.</p>						
N3	03.07.17	1106-1136	0	53	55	48	<48
	<p>Facility: All site activity apart from nearest loader movements masked by traffic.</p> <p>Extraneous: R710 traffic continuously dominant. No other noise audible apart from bird song/calls.</p> <p>Specific L_{Aeq} T determination: L90 dominated by traffic, thus <L90.</p>						
NS1	03.07.17	1223-1253	x	59	62	48	<46
	<p>Facility: Inaudible.</p> <p>Extraneous: Intermittent passing traffic dominant when present. Distant traffic continuously audible at low level, including R710 traffic. Bird song/calls. Regular dog barking clearly audible across nearest residential estate.</p> <p>Specific L_{Aeq} T determination: Inaudible, thus <L95.</p>						
NS2	03.07.17	1146-1216	+	68	71	48	<46
	<p>Facility: Inaudible.</p> <p>Extraneous: Passing road traffic almost continuously present and dominant. During lulls, distant traffic audible, in addition to grass mower in distance. Bird song/calls and passing pedestrian voices. Truck passing close to SLM at 1212 intrusive.</p> <p>Specific L_{Aeq} T determination: Inaudible, thus <L95.</p>						

Specific L_{Aeq}: Level considered attributable to source under consideration, determined using real time assessment, field notes, time history profiles, statistical analysis, frequency spectra, spectral statistics and near field correction if applicable.

Audibility scale: Inaudible; faintly audible; slightly audible; audible at low level; quite audible; clearly audible; dominant; intrusive; excessive.

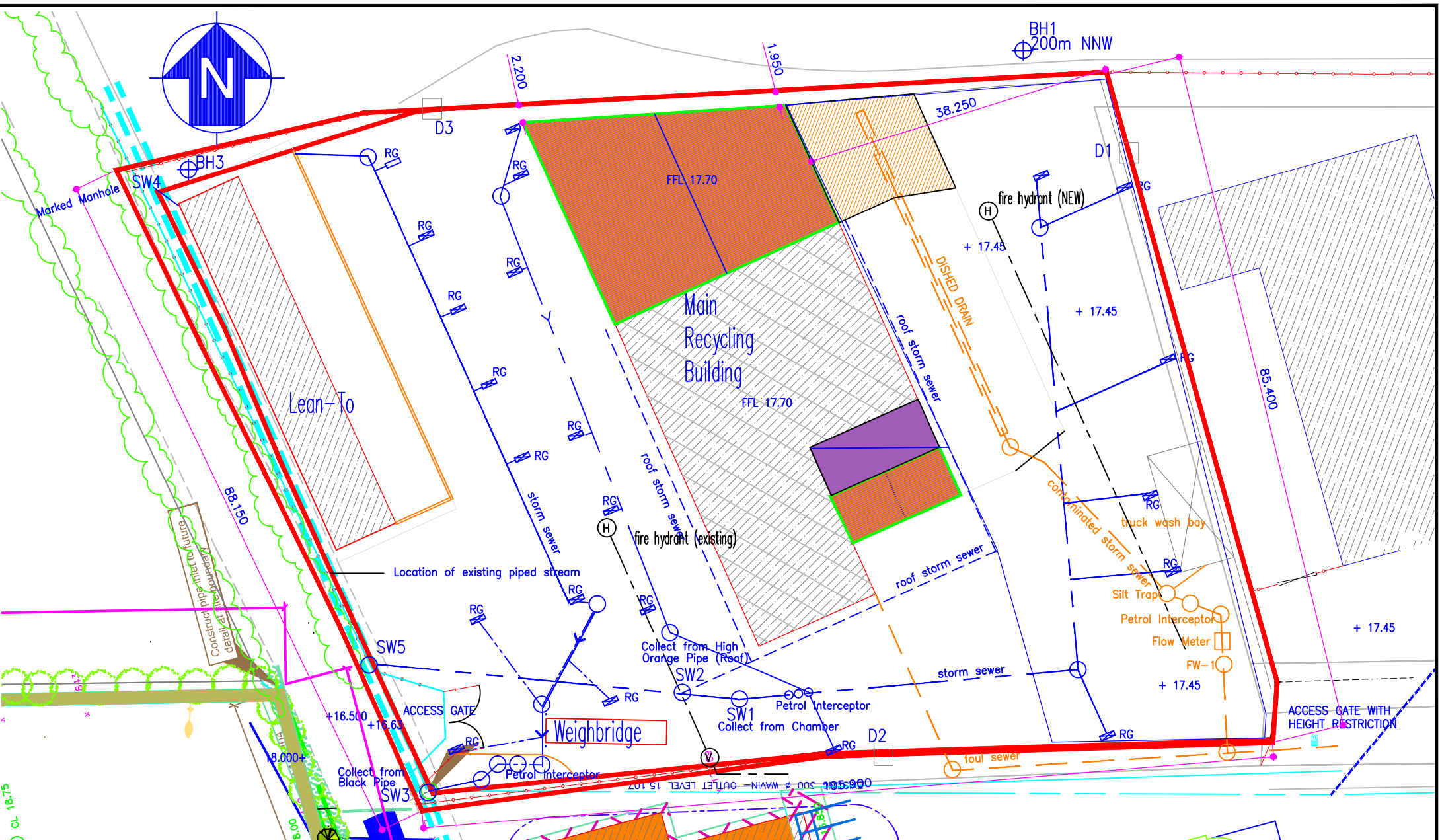
3.5 Dust Monitoring

Dust monitoring was carried out on three occasions at three on-site locations (D1, D2 and D3) in June, September and October. The results of the monitoring are included on Table 3.7.

The dust emission limit (350 mg/m²/day) was exceeded at D3 in two monitoring events, June and October. On both occasions the laboratory noted the presence of a large amount of brown particulates in the dust gauge. The likely source of this dust was gravel and rubble which was being loaded onto trucks in the area adjacent to D3 during the monitoring periods. No complaints relating to dust were received from neighbouring premises during the reporting period.

Table 3.7 Dust Monitoring Results 2017

Dust Emission (mg/m²/day)	June	September	October	Emission Limit
Sample Location	(30 days)	(30 days)	(30 days)	(mg/m²/day)
D1	233	184	277	350
D2	248	291	258	350
D3	501	311	609	350




O' Callaghan Moran & Associates.
 Unit 15 Melbourne Business Park
 Model Farm Road, Cork, Ireland.
 Tel. (021) 4345366
 email: info@ocallaghanmoran.com

CLIENT
Greenstar Ltd.

details

FIGURE No.
 3.1

This drawing is the property of O'Callaghan Moran & Associates and shall not be used, reproduced or disclosed to anyone without the prior written permission of O'Callaghan Moran & Associates and shall be returned upon request.

TITLE
Monitoring Locations GES W'ford

SCALE
 NTS

REV.
 A

4. SITE DEVELOPMENT WORKS

4.1 Engineering Works

No engineering works were carried out at the installation in 2017.

In 2018, SEHL propose to upgrade the civic amenity centre at the installation and to provide a new purpose-built weighbridge office.

4.2 Summary of Resource & Energy Consumption

Table 4.1 presents an estimate of the resources used on-site during the reporting period and in 2016.

Table 4.1 Estimate of Resources Used On-Site in 2016 & 2017

Resources	Quantities 2016	Quantities 2017
Diesel (green)	50,754 litres	27,863 litres
Electricity	318,200 kWh	327,240 kWh
Hydraulic Oil	1,950 litres	1,774 litres
AdBlu Diesel Additive	2,430 litres	3,860 litres
Odour Neutraliser	0 litres	0 litres

4.3 Bund Integrity Testing

Condition 3.11.5 of the licence requires that tank and bund testing be carried out at least once every three years. Integrity testing was carried out in 2017 and the bunds, interceptors and drainage lines were passed fit for purpose. The reports are retained at the facility for Agency inspection.

5. WASTE RECEIVED AND CONSIGNED FROM THE FACILITY

Table 5.1 shows the total quantities of waste received and consigned from the facility in 2017. A breakdown of the waste types is provided in accordance with the European Waste Catalogue and Hazardous Waste list. A more detailed description of the wastes accepted and consigned is provided in the PRTR submission in Appendix 1. For comparative purposes the amounts of waste received and consigned from 2009 to 2017 are presented in Table 5.2.

The total quantity of waste received was 51,853 tonnes. The total waste consigned was 51,849 tonnes. The records show that more waste was accepted at the site than consigned. This is due to material being stored in the facility at the end of 2017 prior to consignment in Q1 2018. All the wastes consigned went to authorised recovery and disposal facilities approved by the Agency.

Table 5.1 Waste Received & Consigned 2017

EWC	Description	Waste In	Waste Out
08 03 99	Cartridges	11.492	
12 12 02	Ferrous Metal Dust & Particles		14.86
15 01 01	Paper and cardboard packaging	6,567.282	5,023.675
15 01 02	Plastic packaging	2,971.845	488.275
15 01 03	Wooden packaging	40.00	33.16
15 01 04	Metallic packaging		13.68
15 01 06	Mixed packaging		707.90
15 01 07	Glass packaging	125.68	88.86
16 06 01*	Lead Battery		2.073
17 05 04	Soil and stones	3.46	
17 08 02	Gypsum-based construction material	2.68	
17 09 04	Mixed C&D wastes	998.2	845.58
19 12 04	Plastic & Rubber	29.06	2,188.945
19 12 07	Shredded timber	1.14	1,256.42
19 12 12	Other wastes (including mixtures of materials) from mechanical treatment of wastes	17.754	9,646.138
20 01 01	Paper & cardboard from municipal sources	1,476.708	2,567.64
20 01 02	Glass from municipal sources	48.66	
20 01 08	Biodegradable kitchen and canteen waste	3,666.565	3,328.24
20 01 11	Textile		1.14
20 01 35	WEEE	1.64	13.14
20 01 38	Wood waste from municipal sources	2,189.052	663.21
20 01 39	Plastic from municipal sources	50.834	19.99
20 01 40	Metals from municipal waste	162.884	176.31
20 02 01	Biodegradable Waste	59.42	197.12
20 03 01	Mixed municipal waste	22,251.639	22,772.02
20 03 03	Street-cleaning residues	1,807.06	1,658.80
20 03 07	Bulky Waste	9,369.707	141.469
Total Received		51,852.762	
Total Consigned			51,848.645
Recovery			51,229.945
Disposal			618.70
Recovery Rate			98.81%

Table 5.2 Waste Received & Consigned

Year	Total Received	Total Consigned	Total Recovered	Total Disposed	Recovery Rate
2016	58,289	28,271	55,878	2,393	96%
2015	46,718	46,668	45,081	1,587	96%
2014	38,532	38,741	36,013	2,727	93%
2013	55,232	54,523	43,092	11,431	79%
2012	54,627	54,532	43,101	11,431	79%
2011	57,592	58,231	44,517	13,075	76%
2010	49,011	48,120	25,706	22,414	53%
2009	48,560	47,574	20,892	26,682	44%

6. ENVIRONMENTAL INCIDENTS AND COMPLAINTS

6.1 Incidents

The ELVs for BOD, COD and TSS were exceeded in September, while the ELV for TSS was also exceeded in November. There was two breaches of the dust emission limit at D3 in July and October. The Agency and County Council were notified where necessary of each incident.

6.2 Register of Complaints

SEHL maintains a register of complaints received at the facility offices. No complaints were received during the reporting period.

7. ENVIRONMENTAL DEVELOPMENT & CONTROL

7.1 Environmental Management Programme Report

SEHL have implemented an Integrated Management System (IMS) in accordance with the requirements of Occupational Health and Safety Assessment Series (OHSAS) 18001:2007 and International Standard Organisation (ISO) 14001:2004 in order to manage the Health, Safety and Environmental performance of their business and to control health and safety risk and to minimise their environmental aspects and impacts.

The IMS has been developed for the achievement of continual improvement taking into account the requirements of the Waste Licence Conditions. SEHL has prepared and effectively implement documented procedures and instructions in accordance with the requirements of both the OHSAS 18001:2007 and ISO 14001:2004. The facility is accredited to both standards and was subject of a successful re-certification audit in September 2017.

The schedule of Objectives and Targets, including their status for 2017 (Table 7.1), as well as the proposed Objectives and Targets for 2018 (Table 7.2) are presented below. An index of procedures used at the facility is included in Appendix 2.

7.1.1 Site Management Structure

Management and Staffing structure: -

Name: Tom Walsh
Responsibility: Operations Manager
Experience: Over 10 years waste management experience; has completed the FÁS waste management course.

Name: Ivan Cummins
Responsibility: Yard Supervisor
Experience: Over 30 years waste management experience.

Name: Robertas Zemaitaitis
Responsibility: General Yard Operative
Experience: Over 5 years waste management experience; has completed the Patel Tonra (CIWM approved) Waste Management Course.

Name: Stephanie Pietercelie
Responsibility: Operations & Environmental
Experience: Over 5 years waste management experience; has completed the Patel Tonra (CIWM approved) Waste Management Course.

7.1.2 *Staff Training*

The following staff training was carried out during the year manual handling, reversing, bin lift training, 3 points contact training, Moffet training, forklift training, health and safety induction training, loading shovel training, steps training, fire warden training and first aid training. Details on staff training are retained on the company's electronic Training Management System (TMS).

7.2 **Environmental Management Programme**

7.2.1 *Schedule of Objectives 2017*

The objectives achieved during this reporting period are outlined in Table 7.1.

7.2.2 *Schedule of Objectives 2018*

The schedule of targets and objectives for 2018 are presented in Table 7.2.

7.3 **Communications Programme**

SEHL is committed to setting the standard in waste management and ensuring environmental compliance in all operations. In addition, SEHL's Environmental, Health & Safety Policy makes a specific commitment to ensure that this policy and environmental records are available to the public and interested parties.

To this end SEHL has drawn up a Communications Programme, which details how members of the public are facilitated in accessing and viewing environmental information at the facility. Members of the public who wish to inspect these files may do so at any reasonable time by making an appointment with the Operations Manager using the telephone number posted on the main facility entrance sign.

Table 7.1 Objectives and Targets for 2017

No	2016 Objective	Target	Timescale	Responsibility	Status
1	Odour management	Ensure odour management plans are followed and potential new sources of odour are identified	Q1 - Q4	Site management	Ongoing
2	Fire prevention	Implement recs from Fire Risk Assessments	Q1 - Q4	Site management/ EHS team	Ongoing
		Update ERP & APP			Ongoing
		Maintain fire detection equipment			Ongoing
3	Waste storage	Review waste storage practices on each site to ensure that they are in line with licence conditions, fire prevention and insurance recommendations	Q1 - Q4	Site management/ EHS team	Ongoing
4	Waste acceptance, classification & records	EWC training for all weighbridge ops. Centralisation of all licences & permits inc NWCPs for hauliers.	Q1 - Q4	EHS team	Completed
5	CRAMP, ELRA & Financial Provision	CRAMP, ELRA & Financial Provision to be reviewed	Q2	EHS team	Completed
6	Lighting in MRF buildings	Clean & upgrade where required all light fittings in MRF buildings	Q3	Site management	Completed
7	NWCP exemptions	Implement NWCP exemption declarations	Q1 - Q4	Site management	Completed
8	Pipeline integrity Testing	Complete pipeline integrity testing	Q1/Q2	Site management	Completed

Table 7.2 Schedule of Objective and Targets 2018

No	2018 Objective	Target	Timescale	Responsibility
1	Nuisance management	Ensure odour/noise/dust management plans are followed and potential new sources are identified	Q1 - Q4	Site management
2	Fire prevention	Implement recs from Fire Risk Assessments Update ERP & APP where applicable Maintain fire detection equipment	Q1 - Q4	Site management/EHS team
3	Waste storage	Review waste storage practices on each site to ensure that they are in line with licence conditions, fire prevention and insurance recommendations	Q1 - Q4	Site management/EHS team
4	ISO 14001 transition	Transition ISO 14001 to the 2015 standard	Q2	EHS team
5	Paperless project	Implement plans for a paperless office	Q3-Q4	All staff
6	Resource tracking	Sites to track energy usage and other resources in order to conserve wherever possible	Q1 - Q4	Site management/EHS team
7	Hardstand & site infrastructure	Review hardstand and formulate repair plan as required. Record using EF11.	Q1 - Q4	Site management/EHS team
8	Civic Amenity Revamp	Make changes to existing civic amenity site: Make bigger, Upgrade equipment & New signage	Q1 - Q2	Site management
9	Truck Wash area	Make changes/improve truck wash area	Q2 - Q3	Site management

7.4 Report Financial Provision

A Decommissioning Management Plan (DMP) and Environmental Liabilities Risk Assessment (ELRA) including Financial Provision (FP) were submitted to the Agency in 2013 as part of the transfer of the licence which occurred in Q1 2014. A revised CRAMP and ELRA was requested by Agency and were submitted in April 2017.

The facility has an Integrated Management System (IMS) in place and the site has achieved external accreditation for its implementation of ISO 14001 and OHSAS 18001, environmental and health and safety management systems. Effective implementation of these systems is the most appropriate way to ensure that mitigation measures achieve the required risk reduction on site.

The IMS serves as a guidance document for facility staff and describes operational control and management practices that are applied at the facility. The IMS is designed to ensure that management of site activities complies with regulatory requirements and best practice. The IMS includes a detailed Emergency Response Procedure which sets out the steps to be taken in the event of an incident at the facility with the potential to cause environmental damage. SEHL also implements a comprehensive monitoring programme which will highlight any potential environmental incidents with the potential to cause environmental damage.

7.5 Nuisance Controls

SEHL has contracted a vermin control company to carry out nuisance control at the facility. Rentokil provide pest control at the facility and also provide for the treatment of insects at the facility if necessary. Daily litter picks and road-sweeping are carried out by yard operators during the course of their daily duties. An odour control system is in place at the facility which can be operated automatically or manually by the Environmental Officer and Operations Supervisor as needed. A site inspection is carried out daily and recorded on the facilities inspection log which is controlled as part of the current Integrated Management System.

7.6 Wastewater Volumes

The volume of wastewater generated during the reporting period was estimated to be 669.110 m³

8. OTHER REPORTS

8.1 European Pollutant Release and Transfer Register Regulation

Under the European Pollutant Release and Transfer Register Regulation (EC) No. 166/2006 GES are required to submit information annually to the Agency. A copy of the return submitted to the Agency via the web-based data reporting system is in Appendix 1.

APPENDIX 1

European Pollutant Release and Transfer Register



Environmental Protection Agency

| PRTR# : W0177 | Facility Name : Starrus Eco Holdings Limited (Waterford City) |
 Filename : W0177_2017.xls | Return Year : 2017 |

[Guidance to completing the PRTR workbook](#)

PRTR Returns Workbook

Version 1.1.19

REFERENCE YEAR	2017
-----------------------	------

1. FACILITY IDENTIFICATION

Parent Company Name	Starrus Eco Holdings Limited
Facility Name	Starrus Eco Holdings Limited (Waterford City)
PRTR Identification Number	W0177
Licence Number	W0177-03

Classes of Activity

No.	class name
-	Refer to PRTR class activities below

Address 1	Carrignard
Address 2	Six Cross Roads
Address 3	Business Park
Address 4	Waterford City
	Waterford
Country	Ireland
Coordinates of Location	-7.14684 52.2345
River Basin District	IESE
NACE Code	3821
Main Economic Activity	Treatment and disposal of non-hazardous waste
AER Returns Contact Name	Sara Smyth
AER Returns Contact Email Address	sara.smyth@greenstar.ie
AER Returns Contact Position	Environmental Engineer
AER Returns Contact Telephone Number	01 2746236
AER Returns Contact Mobile Phone Number	
AER Returns Contact Fax Number	
Production Volume	0.0
Production Volume Units	
Number of Installations	0
Number of Operating Hours in Year	0
Number of Employees	51
User Feedback/Comments	
Web Address	

2. PRTR CLASS ACTIVITIES

Activity Number	Activity Name
5(c)	Installations for the disposal of non-hazardous waste
5(c)	Installations for the disposal of non-hazardous waste
50.1	General

3. SOLVENTS REGULATIONS (S.I. No. 543 of 2002)

Is it applicable?	
Have you been granted an exemption ?	
If applicable which activity class applies (as per Schedule 2 of the regulations) ?	
Is the reduction scheme compliance route being used ?	

4. WASTE IMPORTED/ACCEPTED ONTO SITE

[Guidance on waste imported/accepted onto site](#)

Do you import/accept waste onto your site for on-site treatment (either recovery or disposal activities) ?	
--	--

4.1 RELEASES TO AIR

[Link to previous years emissions data](#)

| PRTR# : W0177 | Facility Name : Starrus Eco Holdings Limited (Waterford City) | Filename : W0177_2017.xls | Return Year : 2017 |

26/03/2018 19:24

SECTION A : SECTOR SPECIFIC PRTR POLLUTANTS

POLLUTANT		METHOD			Please enter all quantities in this section in KGs			
RELEASES TO AIR		METHOD USED			QUANTITY			
No. Annex II	Name	M/C/E	Method Code	Designation or Description	Emission Point 1	T (Total) KG/Year	A (Accidental) KG/Year	F (Fugitive) KG/Year
					0.0	0.0	0.0	0.0

* Select a row by double-clicking on the Pollutant Name (Column B) then click the delete button

SECTION B : REMAINING PRTR POLLUTANTS

POLLUTANT		METHOD			Please enter all quantities in this section in KGs			
RELEASES TO AIR		METHOD USED			QUANTITY			
No. Annex II	Name	M/C/E	Method Code	Designation or Description	Emission Point 1	T (Total) KG/Year	A (Accidental) KG/Year	F (Fugitive) KG/Year
					0.0	0.0	0.0	0.0

* Select a row by double-clicking on the Pollutant Name (Column B) then click the delete button

SECTION C : REMAINING POLLUTANT EMISSIONS (As required in your Licence)

POLLUTANT		METHOD			Please enter all quantities in this section in KGs			
RELEASES TO AIR		METHOD USED			QUANTITY			
Pollutant No.	Name	M/C/E	Method Code	Designation or Description	Emission Point 1	T (Total) KG/Year	A (Accidental) KG/Year	F (Fugitive) KG/Year
					0.0	0.0	0.0	0.0

* Select a row by double-clicking on the Pollutant Name (Column B) then click the delete button

Additional Data Requested from Landfill operators

For the purposes of the National Inventory on Greenhouse Gases, landfill operators are requested to provide summary data on landfill gas (Methane) flared or utilised on their facilities to accompany the figures for total methane generated. Operators should only report their Net methane (CH4) emission to the environment under T(total) KG/yr for Section A: Sector specific PRTR pollutants above. Please complete the table below:

Landfill: Starrus Eco Holdings Limited (Waterford City)

Please enter summary data on the quantities of methane flared and / or utilised	T (Total) kg/Year	M/C/E	Method Used		Facility Total Capacity m3 per hour
			Method Code	Designation or Description	
Total estimated methane generation (as per site model)	0.0				N/A
Methane flared	0.0				0.0 (Total Flaring Capacity)
Methane utilised in engine/s	0.0				0.0 (Total Utilising Capacity)
Net methane emission (as reported in Section A above)	0.0				N/A

4.2 RELEASES TO WATERS

[Link to previous years emissions data](#)

| PRTR# : W0177 | Facility Name : Starrus Eco Holdings Limited (Waterford City) | Filename : W0177_2017.xls | Return Year : 2017 |

26/03/2018 19:24

SECTION A : SECTOR SPECIFIC PRTR POLLUTANTS

Data on ambient monitoring of storm/surface water or groundwater, conducted as part of your licence requirements, should NOT be submitted under AER / PRTR Reporting as it

RELEASES TO WATERS					Please enter all quantities in this section in KGs			
POLLUTANT		M/C/E	Method Used		QUANTITY			
No. Annex II	Name		Method Code	Designation or Description	Emission Point 1	T (Total) KG/Year	A (Accidental) KG/Year	F (Fugitive) KG/Year
					0.0	0.0	0.0	0.0

* Select a row by double-clicking on the Pollutant Name (Column B) then click the delete button

SECTION B : REMAINING PRTR POLLUTANTS

RELEASES TO WATERS					Please enter all quantities in this section in KGs			
POLLUTANT		M/C/E	Method Used		QUANTITY			
No. Annex II	Name		Method Code	Designation or Description	Emission Point 1	T (Total) KG/Year	A (Accidental) KG/Year	F (Fugitive) KG/Year
					0.0	0.0	0.0	0.0

* Select a row by double-clicking on the Pollutant Name (Column B) then click the delete button

SECTION C : REMAINING POLLUTANT EMISSIONS (as required in your Licence)

RELEASES TO WATERS					Please enter all quantities in this section in KGs			
POLLUTANT		M/C/E	Method Used		QUANTITY			
Pollutant No.	Name		Method Code	Designation or Description	Emission Point 1	T (Total) KG/Year	A (Accidental) KG/Year	F (Fugitive) KG/Year
					0.0	0.0	0.0	0.0

* Select a row by double-clicking on the Pollutant Name (Column B) then click the delete button

4.3 RELEASES TO WASTEWATER OR SEWER

[Link to previous years emissions data](#)

| PRTR#: W0177 | Facility Name : Starrus Eco Holdings Limited (Waterford City) | Filename : W017

26/03/2018 19:24

SECTION A : PRTR POLLUTANTS

OFFSITE TRANSFER OF POLLUTANTS DESTINED FOR WASTE-WATER TREATMENT OR SEWER					Please enter all quantities in this section in KGs			
POLLUTANT		METHOD			QUANTITY			
No. Annex II	Name	M/C/E	Method Used		Emission Point 1	T (Total) KG/Year	A (Accidental) KG/Year	F (Fugitive) KG/Year
			Method Code	Designation or Description				
					0.0	0.0	0.0	0.0

* Select a row by double-clicking on the Pollutant Name (Column B) then click the delete button

SECTION B : REMAINING POLLUTANT EMISSIONS (as required in your Licence)

OFFSITE TRANSFER OF POLLUTANTS DESTINED FOR WASTE-WATER TREATMENT OR SEWER					Please enter all quantities in this section in KGs			
POLLUTANT		METHOD			QUANTITY			
Pollutant No.	Name	M/C/E	Method Used		Emission Point 1	T (Total) KG/Year	A (Accidental) KG/Year	F (Fugitive) KG/Year
			Method Code	Designation or Description				
					0.0	0.0	0.0	0.0

* Select a row by double-clicking on the Pollutant Name (Column B) then click the delete button

4.4 RELEASES TO LAND

[Link to previous years emissions data](#)

| PRTR# : W0177 | Facility Name : Starrus Eco Holdings Limited (Waterford City) | Filename : W0177_2017.xls | Return Year : 2017 |

26/03/2018 19:25

SECTION A : PRTR POLLUTANTS

POLLUTANT		RELEASERS TO LAND			Please enter all quantities in this section in KGs		
POLLUTANT		METHOD			QUANTITY		
No. Annex II	Name	M/C/E	Method Code	Designation or Description	Emission Point 1	T (Total) KG/Year	A (Accidental) KG/Year
					0.0	0.0	0.0

* Select a row by double-clicking on the Pollutant Name (Column B) then click the delete button

SECTION B : REMAINING POLLUTANT EMISSIONS (as required in your Licence)

POLLUTANT		RELEASERS TO LAND			Please enter all quantities in this section in KGs		
POLLUTANT		METHOD			QUANTITY		
Pollutant No.	Name	M/C/E	Method Code	Designation or Description	Emission Point 1	T (Total) KG/Year	A (Accidental) KG/Year
					0.0	0.0	0.0

* Select a row by double-clicking on the Pollutant Name (Column B) then click the delete button

5. ONSITE TREATMENT & OFFSITE TRANSFERS OF WASTE

| PRTR# : W0177 | Facility Name : Starrus Eco Holdings Limited (Waterford City) | Filename : W0177_2017.xls | Return Year : 2017 |

26/03/2018 19:25

Please enter all quantities on this sheet in Tonnes

0

Transfer Destination	European Waste Code	Hazardous	Quantity (Tonnes per Year)	Description of Waste	Waste Treatment Operation	Method Used		Location of Treatment	Lic. Waste - Name and Licence/Permit No of Next Destination Facility		Name and License / Permit No. and Address of Final Recoverer / Disposer (HAZARDOUS WASTE ONLY)	Actual Address of Final Destination i.e. Final Recovery / Disposal Site (HAZARDOUS WASTE ONLY)
						M/C/E	Method Used		Haz Waste: Name and Licence/Permit No of Recover/Disposer	Non Haz Waste: Address of Recover/Disposer		
Within the Country	12 01 02	No	14.86	ferrous metal dust and particles	R4	M	Weighed	Offsite in Ireland	Cork Metal Company,WFP-CK-10-0067-01	Dublin Hill,Cork,,,,Ireland Ballymount Road,Walkinstown,Dublin 12,,Ireland		
To Other Countries	15 01 01	No	2773.115	paper and cardboard packaging	R3	M	Weighed	Abroad	Irish Packaging & Recycling,W0263-01 WRC,Scotland,United Kingdom		
To Other Countries	15 01 02	No	15.6	plastic packaging	R3	M	Weighed	Abroad	Recycling,IRE/AG121/15 Saica natur Uk Ltd,IRE/G277/15,United Kingdom		
To Other Countries	15 01 01	No	2250.56	paper and cardboard packaging	R3	M	Weighed	Abroad	Agnail ,TFS Broker IRE/AG117/11,Ballycoolin,Dublin,Ireland		
To Other Countries	15 01 02	No	73.295	plastic packaging	R3	M	Weighed	Abroad	Peute Papier Recycling BV,IRE/G006/16,Netherlands Ballymount Road,Walkinstown,Dublin 12,,Ireland		
Within the Country	15 01 02	No	21.1	plastic packaging	R3	M	Weighed	Offsite in Ireland	Irish Packaging & Recycling,W0263-01,Ireland		
Within the Country	15 01 02	No	198.8	plastic packaging	R13	M	Weighed	Offsite in Ireland	Leinster Environmentals,WP 2008/06	Park,Haggardstown,Dundalk ,Co. Louth,Ireland The Kipper House,Scilly,Kinsale,Co. Cork,Ireland		
Within the Country	15 01 02	No	66.54	plastic packaging	R3	M	Weighed	Offsite in Ireland	Materia Environmental Ltd.,IRE/AG161/11	Lawlesstown ,Clonmel ,Co Tipperary ,,ireland		
Within the Country	15 01 03	No	18.42	wooden packaging	R13	M	Weighed	Offsite in Ireland	Clonmel Waste Disposal Ltd ,WP-008-02	Sarsfieldcourt Industrial Estate,Glanmire,Co. Cork,,Ireland		
Within the Country	15 01 06	No	707.9	mixed packaging	R13	M	Weighed	Offsite in Ireland	Starrus Property Holdings Ltd.,WFP-CK-10-0047-03	Lawlesstown ,Clonmel ,Co Tipperary ,,ireland		
Within the Country	15 01 07	No	75.54	glass packaging	R13	M	Weighed	Offsite in Ireland	Clonmel Waste Disposal Ltd ,WP-008-02	Ballinagore,Co. Westmeath,,,,Ireland		
Within the Country	15 01 07	No	13.32	glass packaging mixed construction and demolition wastes other than those mentioned in 17 09 01, 17	R5	M	Weighed	Offsite in Ireland	Gannon Eco,WFP-WM-2009-0007-01,Ireland		
Within the Country	17 09 04	No	845.58	09 02 and 17 09 03	R13	M	Weighed	Offsite in Ireland	CHI Environmental Ltd ,WMP 023/2007	Grannagh ,Kilmacow ,Co Kilkenny ,,ireland		
Within the Country	19 12 04	No	645.18	plastic and rubber	R3	M	Weighed	Offsite in Ireland	Agnail ,TFS Broker IRE/AG117/11,Ballycoolin,Dublin,Ireland		
Within the Country	19 12 04	No	183.445	plastic and rubber	R3	M	Weighed	Offsite in Ireland	Greentech Plastics Ltd,WFP-LK-2013-164	Castletroy ,Limerick,,,,Ireland		
To Other Countries	19 12 04	No	590.4	plastic and rubber	R13	M	Weighed	Abroad	Recycling,IRE/AG121/15 Boost Recycling Limited,IRE/G082/11,Scotland,United Kingdom		
To Other Countries	19 12 04	No	60.14	plastic and rubber	R13	M	Weighed	Abroad,United Kingdom	317 Golden Hill Lane,Leyland,Lancashire,PR 25 2YJ,United Kingdom		
To Other Countries	19 12 04	No	38.42	plastic and rubber	R13	M	Weighed	Abroad	Eco Recycling (UK) Limited,IRE/G474/19	Clermont Business Park,Haggardstown,Dundalk ,Co. Louth,Ireland		
Within the Country	19 12 04	No	671.36	plastic and rubber	R13	M	Weighed	Offsite in Ireland	Leinster Environmentals,WP 2008/06	Lawlesstown ,Clonmel ,Co Tipperary ,,ireland		
Within the Country	19 12 07	No	1256.42	wood other than that mentioned in 19 12 06 other wastes (including mixtures of materials) from mechanical treatment of wastes other than those mentioned in 19 12	R13	M	Weighed	Offsite in Ireland	Clonmel Waste Disposal Ltd ,WP-008-02,Ireland		
Within the Country	19 12 12	No	20.92	11 other wastes (including mixtures of materials) from mechanical treatment of wastes other than those mentioned in 19 12	R13	M	Weighed	Offsite in Ireland	Nurendale Ltd.,W0140-04	Rathdrinagh,Beauparc,Nava n,Co. Meath,Ireland		
Within the Country	19 12 12	No	9625.218	11 other wastes (including mixtures of materials) from mechanical treatment of wastes other than those mentioned in 19 12	R13	M	Weighed	Offsite in Ireland	Starrus Eco Holdings Ltd,W0053-03	Fassaroe,Bray,Co. Wicklow,,Ireland		

Transfer Destination	European Waste Code	Hazardous	Quantity (Tonnes per Year)	Description of Waste	Waste Treatment Operation	Method Used		Location of Treatment	Licence/Permit No of Next Destination Facility		Name and License / Permit No. and Address of Final Recycler / Disposer (HAZARDOUS WASTE ONLY)	Actual Address of Final Destination i.e. Final Recovery / Disposal Site (HAZARDOUS WASTE ONLY)
						M/C/E	Method Used		Haz Waste: Name and Licence/Permit No of Recover/Disposer	Non Haz Waste: Address of Recover/Disposer		
Within the Country	20 01 01	No	77.2	paper and cardboard	R13	M	Weighed	Offsite in Ireland	Marwin Environmental,IRE/G027/17	7 Glyntown Heights,Glanmire,Co. Cork,.,Ireland		
Within the Country	20 01 01	No	189.56	paper and cardboard	R3	M	Weighed	Offsite in Ireland	Shred It Ireland,.,Ireland			
Within the Country	20 01 01	No	18.72	paper and cardboard	R13	M	Weighed	Offsite in Ireland	Nurendale Ltd.,W0140-04	Rathdrinagh,Beauparc,Navan,Co. Meath,Ireland Ballymount Road,Walkinstown,Dublin 12,.,Ireland		
Within the Country	20 01 01	No	1923.68	paper and cardboard	R13	M	Weighed	Offsite in Ireland	Irish Packaging & Recycling,W0263-01	Northwood Recycling Ltd.,IRE/G282/15	K12 2HW,United Kingdom	
To Other Countries	20 01 01	No	27.42	paper and cardboard	R3	M	Weighed	Abroad	Peute Papier Recycling BV,IRE/G006/08	Veeplaat 40,3313 LJ Dordrecht,.,Netherlands		
To Other Countries	20 01 01	No	331.06	paper and cardboard	R3	M	Weighed	Abroad	Ormonde Organics Ltd,WFP-WD-10-0003-01	Killowen,Portlaw,Co. Waterford,.,Ireland		
Within the Country	20 01 08	No	741.14	biodegradable kitchen and canteen waste	R3	M	Weighed	Offsite in Ireland	Molloy Waste Services to Clonmel Waste Disposal Ltd ,WP-008-02	Lawlesstown , Clonmel ,Co Tipperary ,.,ireland		
Within the Country	20 01 08	No	2587.1	biodegradable kitchen and canteen waste	R3	M	Weighed	Offsite in Ireland	Textile Recycling Ltd ,Licence exempt	Glen Abbey Complex ,Belgard , Tallaght , Dublin 24 ,ireland		
Within the Country	20 01 11	No	1.14	discarded electrical and electronic equipment other than those mentioned in 20 01 21 and and 20 01 23 containing	R13	M	Weighed	Offsite in Ireland	KMK Metals Recyclin LTD,W0113-04	Tullamore,Co. Offaly,.,.,Ireland	KMK Metals Recycling Ltd,w0113-04,Tullamore,Co Offaly,.,.,ireland	
Within the Country	20 01 35	Yes	13.14	hazardous components	R4	M	Weighed	Offsite in Ireland	Agnail, TFS Broker			
Within the Country	20 01 39	No	19.99	plastics	R13	M	Weighed	Offsite in Ireland	IRE/AG117/11	.,.,Ballycoolin,Dublin,Ireland		
Within the Country	20 01 38	No	659.59	wood other than that mentioned in 20 01 37	R3	M	Weighed	Offsite in Ireland	Clonmel Waste Disposal Ltd ,WP-008-02	Lawlesstown ,Clonmel ,Co Tipperary ,.,ireland		
Within the Country	20 01 38	No	3.62	wood other than that mentioned in 20 01 37	R3	M	Weighed	Offsite in Ireland	Ormonde Organics Ltd,W0287-01	Killowen,Portlaw,Co. Waterford,.,Ireland		
Within the Country	20 01 40	No	169.25	metals	R4	M	Weighed	Offsite in Ireland	Davis Recycling Ltd,W0134-01	10 The Anchorage Business Park,Charlotte Quay,Dublin 4,.,Ireland		
Within the Country	20 01 40	No	7.06	metals	R4	M	Weighed	Offsite in Ireland	Multimetals Recycling Ltd,WFP-WW-13-0014-03	Murrough Industrial Estate,Bollaney,Wicklow,Co . Wicklow,Ireland		
Within the Country	20 02 01	No	132.76	biodegradable waste	R3	M	Weighed	Offsite in Ireland	Clonmel Waste Disposal Ltd ,WP-008-02	Lawlesstown ,Clonmel ,Co Tipperary ,.,ireland		
Within the Country	20 02 01	No	64.36	biodegradable waste	R13	M	Weighed	Offsite in Ireland	Starrus Eco Holding Ltd.,W0183-01	Millennium Business Park,Grange,Ballycoolin,Dublin 11,Ireland		
Within the Country	20 03 01	No	60.16	mixed municipal waste	R13	M	Weighed	Offsite in Ireland	Starrus Eco Holding Ltd.,W0183-01	Millennium Business Park,Grange,Ballycoolin,Dublin 11,Ireland		
Within the Country	20 03 01	No	819.1	mixed municipal waste	R13	M	Weighed	Offsite in Ireland	Starrus Eco Holdings Ltd,W0188-01	Greenogue Business Park,Rathcoole,Co. Dublin,.,Ireland		
Within the Country	20 03 01	No	20518.7	mixed municipal waste	R13	M	Weighed	Offsite in Ireland	Glanway Ltd,WFP-KK-14-0002-01	Belvue Port,Co. Kilkenny,.,.,Ireland		
Within the Country	20 03 01	No	13.58	mixed municipal waste	R13	M	Weighed	Offsite in Ireland	Starrus Property Holdings Ltd.,WFP-CK-10-0047-03	Sarsfieldcourt Industrial Estate,Glanmire,Co. Cork,.,Ireland		
Within the Country	20 03 01	No	80.52	mixed municipal waste	R13	M	Weighed	Offsite in Ireland	Starrus Eco Holdings Ltd,W0116-02	Six Cross Roads Business Park,Carriganard,Butlerstown,Waterford,Ireland		
Within the Country	20 03 01	No	1274.7	mixed municipal waste	R3	M	Weighed	Offsite in Ireland	Quality Recycling Ltd.,WFP-TS-08-0079-01	Ballylynch,Carrick-on-Suir,Co. Tipperary,.,Ireland		

Transfer Destination	European Waste Code	Hazardous	Quantity (Tonnes per Year)	Description of Waste	Waste Treatment Operation	Method Used		Location of Treatment	Licence/Permit No of Next Destination Facility Haz Waste: Name and Licence/Permit No of Recover/Disposer Non	Haz Waste: Address of Next Destination Facility Non Haz Waste: Address of Recover/Disposer	Name and License / Permit No. and Address of Final Recoverer / Disposer (HAZARDOUS WASTE ONLY)	Actual Address of Final Destination i.e. Final Recovery / Disposal Site (HAZARDOUS WASTE ONLY)
						M/C/E	Method Used					
Within the Country	20 03 01	No	5.26	mixed municipal waste	R13	M	Weighed	Offsite in Ireland	Irish Packaging & Recycling,W0263-01	Ballymount Road,Walkinstown,Dublin 12,,Ireland		
Within the Country	20 03 07	No	34.14	bulky waste	R13	M	Weighed	Offsite in Ireland	Starrus Eco Holdings Ltd,W0053-03	Fassaroe,Bray,Co. Wicklow,,Ireland		
Within the Country	20 03 03	No	618.7	street-cleaning residues	D5	M	Weighed	Offsite in Ireland	Bord Na Mona,W0201-01	Drehid Landfill,Drehid ,Naas,Co. Kildare,Ireland		
Within the Country	20 03 03	No	1040.1	street-cleaning residues	R13	M	Weighed	Offsite in Ireland	Starrus Eco Holdings Ltd,W0053-03	Fassaroe,Bray,Co. Wicklow,,Ireland		
Within the Country	20 03 07	No	85.78	bulky waste	R13	M	Weighed	Offsite in Ireland	Murray Waste Recycling Ltd.,W0258-01	Coolatore,Ferns,Co. Wexford,,Ireland		
Within the Country	20 03 07	No	14.04	bulky waste	R13	M	Weighed	Offsite in Ireland	Starrus Property Holdings Ltd.,WFP-CK-10-0047-03	Sarsfieldcourt Industrial Estate,Glanmire,Co. Cork,,Ireland		
Within the Country	20 03 07	No	7.509	bulky waste	R13	M	Weighed	Offsite in Ireland	Nurendale Ltd.,W0140-04	Rathdrinagh,Beauparc,Navan,Co. Meath,Ireland		
Within the Country	15 01 03	No	14.74	wooden packaging	R13	M	Weighed	Offsite in Ireland	Irish Packaging & Recycling,W0263-01	Ballymount Road,Walkinstown,Dublin 12,,Ireland		
Within the Country	15 01 04	No	5.48	metallic packaging	R4	M	Weighed	Offsite in Ireland	Molloy Metals,WP08/14b	Ballycarney,Enniscorthy,Co. Wexford,,Ireland		
Within the Country	15 01 04	No	8.2	metallic packaging	R13	M	Weighed	Offsite in Ireland	Irish Packaging & Recycling,W0263-01	Ballymount Road,Walkinstown,Dublin 12,,Ireland		
Within the Country	16 06 01	Yes	2.073	lead batteries	R4	M	Weighed	Offsite in Ireland	KMK Metals Recyclin LTD,W0113-04	Tullamore,Co. Offaly,,Ireland	KMK Metals Recycling Ltd,w0113-04,Tullamore,Co Offaly,,Irelandireland

* Select a row by double-clicking the Description of Waste then click the delete button

APPENDIX 2

Procedures List



Doc. No.: Control	Revision No.: As Shown	Issue Date: As Shown
Approved By:	David Naughton – Group Environmental Manager	Page 1 of 5
	Joe Nicholson – Group H&S Manager	

Integrated Procedures - IP

IP-01	Document & Record Control Procedure	Rev 01, 22/05/17
IP-02	Health & Safety Risk Assessment Procedure	Rev 01, 22/05/17
IP-03	Environmental Aspects & Impacts Procedure	Rev 01, 22/05/17
IP-04	Legal & Regulatory Requirements Procedure	Rev 01, 22/05/17
IP-05	Objectives, Targets & Management Programmes Procedure	Rev 01, 22/05/17
IP-06	Competence, Training & Awareness Procedure	Rev 01, 22/05/17
IP-07	Communication & Consultation Procedure	Rev 01, 22/05/17
IP-08	Monitoring, Measurement & Improvement Procedure	Rev 01, 22/05/17
IP-09	Evaluation of Compliance Procedure	Rev 01, 22/05/17
IP-10	Non Conformances, Corrective/Preventive Actions Procedure	Rev 01, 22/05/17
IP-11	Internal Audit Procedure	Rev 01, 22/05/17
IP-12	Management Review Procedure	Rev 01, 22/05/17
IP-13	Control of Contractors/Visitors Procedure	Rev 01, 22/05/17
IP-14	Health & Safety & Environmental Monitoring	Rev 01, 22/05/17
IP-15	Emergency Preparedness & Response Procedure	Rev 01, 22/05/17
IP-16	Fire Prevention Procedure	Rev 01, 22/05/17
IP-17	Bin Washing Procedure	Rev 01, 22/05/17
IP-18	Accident Prevention Procedure	Rev 01, 22/05/17
IP-19	Fuel Procedure for Tanks & Mobile Plant	Rev 01, 22/05/17

Safety Procedures - SP

SP-01	Permit to Work Procedure	Rev 01, 22/05/17
SP-02	Maintenance & Calibration Procedure	Rev 01, 22/05/17
SP-03	Mobile Plant Procedure	Rev 01, 22/05/17
SP-04	Fork Truck Procedure	Rev 01, 22/05/17
SP-05	Operation of Fixed Plant Procedure	Rev 01, 22/05/17
SP-06	Lock Out / Tag Out Procedure	Rev 01, 22/05/17
SP-07	Health & Safety Notification Procedure	Rev 01, 22/05/17
SP-08	MSW Shredder routine Maintenance & Clearing of Blockages Procedure (SCGT)	Rev 01, 22/05/17
SP-09	Weighbridge & Tipping Procedure (SCGT)	Rev 01, 22/05/17
SP-10	Cleaning of Washing Bay (Greenogue)	Rev 01, 22/05/17



Doc. No.: Control	Revision No.: As Shown	Issue Date: As Shown
Approved By:	David Naughton – <i>Group Environmental Manager</i>	Page 2 of 5
	Joe Nicholson – <i>Group H&S Manager</i>	

Environmental Procedures - EP		
EP-01	Office Waste & Energy Management Procedure	Rev 01, 22/05/17
EP-02	Decommissioning and Aftercare Procedure	Rev 01, 22/05/17
EP-03	Environment Communications Procedure	Rev 01, 22/05/17
EP-04	Waste Permits & Licences Procedure	Rev 01, 22/05/17
EP-05	Waste Acceptance Procedure	Rev 01, 22/05/17
EP-06	Unacceptable Waste Procedure	Rev 01, 22/05/17
EP-07	Waste & Material Storage Procedure	Rev 01, 22/05/17
EP-08	Waste Processing Procedure	Rev 01, 22/05/17
EP-09	Site Infrastructure Procedure	Rev 01, 22/05/17
EP-10	Nuisance Management Procedure (Site Specific)	(Site Specific) Rev 01, 22/05/17
EP-11	Civic Amenity Site Procedure	Rev 01, 22/05/17

Doc. No.: Control	Revision No.: As Shown	Issue Date: As Shown
Approved By:	Malcolm Dowling – Group Compliance Manager	Page 3 of 5

Amendment History

Date	Amendment No.	Procedure No:	Revision No:	Comment	Authorised By
05.07.10	01	All	01	Initial Issue	M.D & O.C
13.09.10	02	EP-03	02	Issue of Incident Reports	M.D
20.09.10	03	IP-10	02	Env issues not logged on WIMS Database	M.D
29.10.10	04	IP-13	02	Use of M&M equipment by contractors	M.D & O.C
29.10.10	05	IP-14	02	Use of M&M equipment by contractors	M.D & O.C
29.10.10	06	SP-02	02	Inclusion of Maintenance Schedule	M.D & O.C
05.11.10	07	IP-04	02	Inclusion of other requirements	S.B & O.C
01.02.11	08	SP-08	01	Inclusion of new procedure	O.C
01.02.11	09	IP-10	03	Inclusion of SP-08	O.C
01.02.11	10	IP-15	02	Removal of SF-022	O.C
01.02.11	11	Contents	As shown	EP-10 Site Specific	M.D & O.C
01.02.11	12	IP-06	02	Addressing Agency Staff needs	M.D & O.C
01.02.11	13	Circ List	02	Amendment to document control	M.D & O.C
04.04.11	14	SP-02	03	Inclusion of Site Specific Maintenance schedules	O.C
07.06.11	15	IP-11	02	Inclusion of H&S & Env Internal Audit Schedules	M.D & O.C
14/09/11	16	EP-02	02	Inclusion of decommissioning of plant/equipment	S.B
15/09/11	17	IP-09	02	Inclusion of Statutory Inspections	O.C
01/12/11	18	SP-09	01	Inclusion of new procedure for SCGT	O.C
01/12/11	19	SP-10	01	Inclusion of new procedure for SCGT	O.C
03/05/12	20	SP-01	02	Amendment to remove SF 028	O.C
05/05/12	21	SP-11	01	Inclusion of a new procedure for Greenogue	O.C
28/05/12	22	IP-11	03	General Amendments to internal audit procedure	M.D & O.C
08/06/12	23	IP-13	03	Grammatical amendment	M.D & O.C
15/04/13	24	IP-06	03	Agency staff – sign-off record sufficient proof of training. TMS optional	M.D & O.C

Doc. No.: Control	Revision No.: As Shown	Issue Date: As Shown
Approved By:	Malcolm Dowling – Group Compliance Manager	Page 4 of 5

Date	Amendment No.	Procedure No:	Revision No:	Comment	Authorised By
30/06/13	25	IP-16	01	Inclusion of new procedure	M.D.
09/09/13	26	IP-03	02	Use of Scannell Software Solutions (EnviroManager) instead of IF-03A	M.D & O.C
09/09/13	27	IP-04	30	Use of Scannell Software Solutions (EnviroManager) instead of IF-03A	M.D & O.C
09/09/13	28	IP-05	02	Use of Scannell Software Solutions (EnviroManager) instead of IF-03A	M.D & O.C
16/10/13	29	EP-03	03	Introduction of EPA ALDER Portal	K.B
28/04/14	30	All EP's & IP's	01	Change of Company name and review of all Integrated and Env procedures	M.D & O.C
28/04/14	31	SP's	01	Change of Company name and review of all safety procedures including re-numbering & deletion of Motor Claim Notification Procedure – SP 08	O.C
06/05/15	32	EP-09	02	Ref to new form EF-11 added	SS
21/01/16	33	IP-05/IP-07/IP-12	02	Meeting frequency refs updated	SS
14/11/16	34	IP-18	02	Amended as per EPA instruction	SS
11/01/17	35	IP-19	01	New addition	SS
22/05/17	36	All EP's, SP's & IP's	01	Review of all procedures	DN & JN



Doc. No.: Control	Revision No.: As Shown	Issue Date: As Shown
Approved By:	Malcolm Dowling – Group Compliance Manager	Page 5 of 5

Circulation List

The Integrated Procedures Manual is a controlled document. Copies of the Procedures Manual are available as follows;

Copy Number	Holder
1 (Master Copy)	Group EHS Managers
2	Greenstar EnviroManager
3	Greenstar Intranet – Electronic Copy