

# Kerry County Council



## Waste Licence Ref No. W0087-01

Cahersiveen Civic Amenity Site;  
Inchimacteigue;  
Cahersiveen;  
County Kerry.

## Annual Environmental Report.

### Reporting Period:

January 1<sup>st</sup> – December 31<sup>st</sup> 2017

**Prepared By:**

*Environmental Service Section,  
Kerry County Council,  
Maine Street,  
Tralee  
Co. Kerry.*

*March 2018.*

1.0	Introduction.....	3
2.0	Reporting Period .....	3
3.0	Waste Activities Carried out at the Facility .....	3
4.0	Quantity and Composition of Waste Received, Disposed and Recovered: 1 <sup>st</sup> Jan – 31 <sup>st</sup> Dec 2017.....	5
5.0	Projections of the quantities to be accepted and percentages disposed and recycled/recovered for the coming year.....	7
6.0	Summary Report on Emissions for the Reporting Period .....	7
7.0	Summary of Results and Interpretations of Environmental Monitoring .....	8
8.0	Resource and Energy Consumption Summary .....	9
9.0	Resource and Energy Consumption Summary .....	10
10.0	Timescale for Proposed Development Works For Forthcoming Year .....	12
11.0	Environmental Management System.....	12
12.0	Report Targets and Environmental Objectives and Targets for 2018.....	11
13.0	Summary of Procedures Developed by the Licensee .....	12
14.0	Reported Incidents and Complaints.....	12
15.0	Report on Financial Provision.....	13
16.0	Management and Staffing Structure at Facility 2017 .....	17
17.0	Programme of Public Information.....	18
	Appendix I - Waste Categorisation and Statistics.....	17
	Appendix II – Lab Results of Foul & Surface water Monitoring.....	19
	Appendix III - Results of Dust Monitoring .....	23
	Appendix IV – Results of Noise Monitoring.....	25
	Appendix V - AER/PRTR Return 2017 .....	28

## **1.0 Introduction**

Kerry County Council operates a Civic Amenity Site (*waste transfer and recycling facility*) in the townland of Inchamacteige, approximately 3 km from the town of Cahersiveen, Co. Kerry. The site is accessed via a small access road branching off the county road L-7006.

The principal activity of the Civic Amenity Site (*Waste Transfer Station*) is the compaction of solid waste into 30 cubic meter closed containers for subsequent transfer and disposal by private contractors to landfill.

Other activities include the recycling or reclamation of inorganic materials including metals, glass, steel and aluminium cans, fluorescent tubes, household hazardous waste, cardboard, plastic bottles and newspapers.

This Annual Environment Report is prepared in accordance with Condition 2.8 and also Schedule B of the Waste Licence referenced W0087-01 issued by the Environmental Protection Agency (EPA).

## **2.0 Reporting Period**

The reporting period for this Annual Environmental Report is 1<sup>st</sup> January – 31<sup>st</sup> December 2017.

## **3.0 Waste Activities Carried out at the Facility**

Waste disposal activities are carried out at Cahersiveen Transfer Station in accordance with Part 1 of Waste Licence W0087-01 which outlines the waste disposal activities licensed in accordance with the Third Schedule of the Waste Management Act 1996. Licensed activities include:

**Class 12** Repackaging prior to submission to any activity referred to in a preceding paragraph of this Schedule.

**Class 13** Storage prior to submission to any activity referred to in a preceding paragraph of this Schedule, other than temporary storage, pending collection, on the premises where the waste concerned is produced.

Waste recovery activities carried out at Cahersiveen Transfer Station are in accordance with Part 1 of Waste Licence W0087-01 which outlines the waste recovery activities licensed in accordance with the Fourth Schedule of the Waste Management Act 1996. Licensed activities include:

**Class 1** Solvent reclamation or regeneration.

**Class 2** Recycling or reclamation of organic substances which are not used as solvents (including composting and other biological transformation processes).

**Class 3** Recycling or reclamation of metals and metal compounds.

**Class 4** Recycling or reclamation of other inorganic materials.

**Class 13** Storage of waste intended for submission to any activity referred to in a preceding paragraph of this Schedule, other than temporary storage, pending collection, on the premises where such waste is produced.

#### 4.0 Quantity & Composition of Waste Received, Disposed & Recovered during 2017

Waste tonnage disposed of at Cahersiveen Transfer Station during the reporting year (2017) decreased very slightly (c. 10 tonnes) on the previous year (2016).

The weight of the waste accepted at Cahersiveen Transfer Station Facility for disposal for the reporting period was 545.68 tonnes. This is broken down as follows:

<b>Waste for Disposal</b>	<b>Tonnes 2012</b>	<b>Tonnes 2013</b>	<b>Tonnes 2014</b>	<b>Tonnes 2015</b>	<b>Tonnes 2016</b>	<b>Tonnes 2017</b>
Household Waste	472.86	423.86	449.54	450.84	447.36	446.92
Commercial Waste	37.64	32.42	39.44	45.44	33.78	33.34
Road Sweeping/Street Cleaning	28.88	25.06	31.44	24.46	24.92	23.18
Graveyard Waste	1.98	1.98	0.98	1.48	0.76	1.26
Flytipping	16.40	20.86	25.92	21.34	28.78	40.98
<b>Total Tonnage</b>	<b>557.76</b>	<b>504.18</b>	<b>547.32</b>	<b>543.56</b>	<b>535.60</b>	<b>545.68</b>

**Table 1: Waste Stream Breakdown for reporting period .**

The quantity of waste sent for recycling in 2017 is lower (65.676 tonnes) than 2016. Waste sent for recycling during the reporting period compared with previous years is outlined in Table 2.

<b>Waste for Recycling &amp; Recovery</b>	<b>Tonnes 2012</b>	<b>Tonnes 2013</b>	<b>Tonnes 2014</b>	<b>Tonnes 2015</b>	<b>Tonnes 2016</b>	<b>Tonnes 2017</b>
Metals	20	26.44	27.98	33.40	48.16	42.9
Glass	23.48	28.634	33.672	38.398	31.024	21.632
Aluminium & Steel Cans	3.64	4.692	5.111	5.778	5.283	3.036
Batteries	0.03	0.44	1.22	1.071	0.884	0.984
Newspapers	52.88	51.04	50.87	54.42	49.02	11.220
Cardboard	10.26	13.92	23.36	25.74	22.96	17.880
Fluorescent Tubes	0.28	0.3	0.409	0.227	0	0.469
Plastic Bottles	11.58	15.72	21.58	20.92	22.16	4.640
Household Hazardous Waste-Including Engine Oil	0.98	1.28	1.15	1.708	2.14	1.320
WEEE	61.65	68.23	56.506	49.502	65.603	55.217
Dry Recyclables	12.68	11.84	15.02	16.44	18.50	39.700
Textiles	1	1.1	1.32	1.06	0.76	1.820
<b>Total Tonnes</b>	<b>198.46</b>	<b>223.86</b>	<b>237.90</b>	<b>248.66</b>	<b>266.494</b>	<b>200.818</b>

**Table 2: Waste collected on site and recovered / recycled off site during the reporting period.**

<b>Household Waste Deposited at Caherciveen Civic Amentity Sites in 2017</b>		
<b>Material type</b>	<b>Suggested EWC codes</b>	<b>Total</b>
Mixed residual waste (Trans Waste out of facility)	20 03 01	545.680
<b>Organic waste (food and garden)</b>		
garden	20 02 01	0.000
Mixed dry recyclables (Ecosence Bags)	15 01 06	39.700
<b>Cardboard, newspaper and other paper</b>		
cardboard packaging	15 01 01	17.880
newspaper and magazines	15 01 01	11.220
<b>Glass</b>		
glass packaging (bottles)	15 01 07	21.632
<b>Metals</b>		
aluminium cans (packaging)	15 01 04	0.749
steel cans (packaging)	15 01 04	2.287
other metals (scrap metals)	20 01 40	42.900
<b>Plastic</b>		
plastic packaging (bottles)	20 01 39	4.640
<b>Textiles</b>		
textiles, non-packaging (clothes)	20 01 11	1.820
<b>Batteries</b>		
lead acid batteries and accumulators (Car Batteries)	20 01 33	0.000
Ni-Cd batteries and accumulators	20 01 33	0.984
<b>Household Hazardous Waste</b>		
Waste mineral oils (Engine Oil)	13 02 08	1.320
Oil filters (vehicles)		0.000
Oil containers (mineral oil) - plastic + metal		0.000
Waste cooking or vegetable oils	20 01 25	0.000
Waste paint and varnish (including containers)	20 01 27	0.000
Aerosols	14 06 01	0.000
<b>WEEE collected by compliance schemes</b>		
<b>CRT</b>	20 01 36	12.264
<b>SDA - Small Domestic Appliances</b>	20 01 36	22.266
<b>LDA - Large Domestic Appliances</b>	20 01 36	11.283
<b>Cold</b>	20 01 36	9.404
Flourscent Tubes	20 01 21	0.469
Foul Water Septic Tanks Caherciveen CA	20 0304	0.000
<b>Total Recycling less Mixed Municipal Waste &amp; Foul Water</b>		<b>200.818</b>
<b>Total Recycling Including Mixed Municipal Waste &amp; Foul Water</b>		<b>746.50</b>

**Table 2.1 : Waste collected on site and recovered / recycled off site during the reporting period.**

Appendix I contains a breakdown of waste by classification collected/ repackaged on site during the reporting period.

- **Projections of the quantities to be accepted and percentages disposed and recycled/recovered for the coming year**

It is anticipated that the quantity of household waste disposed of at Cahersiveen should increase slightly and that the amount of other wastes (recycling wastes of various streams) should also increase slightly in 2018.

The proposed Waste Management (Collection Permit) Regulations 2016 – “pay-by-weight” – were due to come into effect in July 2016. The introduction of these Regulations has, however, been deferred.

- **Summary Report on Emissions for the Reporting Period**

**a) Foul Water Emissions**

The foul water discharge is monitored quarterly. The results are sent to the EPA and are also available at the Cahersiveen facility. A “Puraflo<sup>®</sup>” Wastewater Treatment Unit is installed at the facility to treat all foul waters from the site.

**b) Surface Water Emissions**

Surface water runoff from site roads and uncontaminated surfaces discharges via silt traps to the surface water drains.

**c) Waste from Silt Traps and Interceptors**

The wastewater treatment system and drains was cleaned out and serviced in December 2016 where 4.18 tonnes of wastewater was removed and disposed of at the Cahersiveen Municipal Wastewater Treatment Plant as such there was no waste removed during 2017.

This WWTT was serviced again in March 2017 by an independent licensed environmental company-Irish Drains Ltd.

- **Summary of Results and Interpretations of Environmental Monitoring**

**a) Dust monitoring**

Dust monitoring was undertaken by Southern Scientific Services Ltd took place between 1<sup>st</sup> August to 5<sup>th</sup> September 2017.

There have been no issues with dust over the past number of years and no complaints were received in relation to dust at the facility since it opened. The results over the years have shown no significant nuisance from dust at the facility.

It is Kerry County Council's intension to seek a technical amendment in relation to the dust monitoring requirement of Waste Licence W0087 as past monitoring indicates that the site is not causing excessive dust to the surrounding environs.

The Annual Environmental Dust survey (2017) is attached in Appendix V.

**b) Noise monitoring.**

A noise survey to EPA NG4 was undertaken by Southern Scientific Services Ltd on the 15<sup>th</sup> and 10<sup>th</sup> December 2017.

It is concluded that activities at the waste transfer station are not adversely impacting on the noise environment at the nearest noise sensitive location, and that the site is compliant with its waste licence requirements with respect to noise emissions.

There were no issues with noise over the past number of years and no complaints were received in relation to noise at the facility. The results over the years have shown that the facility caused no significant noise nuisance to neighbours.

The waste transfer station does not generate noise at night-time when the facility is closed.

It is Kerry County Council's intension to seek a technical amendment in relation to the noise monitoring requirement of Waste Licence W0087 as past monitoring indicates that the site it not causing excessive noise to the surrounding environs.

The Annual Environmental Noise survey (2017) is attached in Appendix V.



**c) Monitoring of surface water.**

The surface water monitoring results are attached in Appendix II.

**d) Foul Water**

The foul water discharge is monitored quarterly. The results are sent to the EPA and are also available at the Cahersiveen facility. A “Puraflo<sup>®</sup>” Wastewater Treatment Unit is installed at the facility to treat all foul waters from the site. This WWTU was serviced in March 2017 by an independent licensed environmental company - Irish Drains Ltd.

**e) Kerry County Council’s Laboratory Reporting**

Verified lab results are provided in Appendix II.

- **Resource and Energy Consumption Summary**

The following is the energy consumption for Cahersiveen Transfer Station for the reporting period.

**8.1 Diesel**

The diesel usage for Cahersiveen Civic Amenity Site for the reporting period 2017 was 1,387 litres which is substantially less than the previous year’s usage. This could be due to introduction of a new “Ecosense” (*bags of dry recyclables*) compactor in April 2017. Due to the introduction of this compactor there was substantially less usage of the JCB to compact plastic bottles in dedicated skips.

The primary usage of diesel on site is for the municipal waste compactor and for the (JCB) wheeled backhoe excavator on site. Diesel is stored on site in a bunded diesel tank.

## 8.2 Electricity

Year	Cahersiveen average kWh/Day electricity consumption
2017	12.89
2016	18.50
2015	13.77
2014	16.39
2013	15.05
2012	13.66
2011	17.00

Electricity consumption has reduced over the past year. Power is required for the office computer and lighting, weighbridge, waste compactor, storage heating, water pumping, cardboard baler, CCTV and public lighting on the site.

## 8.3 Water

Water supply is from a groundwater borehole on site. Water is mainly used on site for power washing yards, transfer station apron and hopper.

- **Resource and Energy Consumption Summary**

No development works were undertaken at the facility during the reporting period.

- **Proposed Development Works for the Forthcoming Year**

An Eco-sense compactor unit was brought onto site which replaced the metal skips which previously stored paper and plastic. This has improved site safety and litter control.

- **Environmental Management System**

There is an Environmental Management System (EMS) in place for the Cahersiveen Civic Amenity Site.

• **Report Targets and Environmental Objectives and Targets for 2018.**

Target Area	2018 - Objective	2018 – Expected Outcome to Indicate achievement of target
Odour Management	Continue to ensure that the waste facility does not cause a nuisance in terms of odour through good housekeeping practices on site.	No odour complaints received .
Waste Storage Practices	Ensure good housekeeping on site so that waste is stored and collected in a timely fashion so as not to cause a nuisance on site or to the surrounding areas. It is our objective to construct/purchase secure sheds on site for the storage of WEEE and bailed cardboard.	No wind blown litter on site or on the public road adjacent to our site. No overflowing bins on site. Proper segregation of cardboard and WEEE on site which will also give additional security for WEEE material.
Incident Prevention	Continue with daily inspection and record keeping of emergency ‘STOP’ controls on site and look at Fire Preventative and Emergency Response Procedure for the site. Ensure that the Emergency Response Procedure ( ERP) has regard for the Agencies ‘ <i>Guidance Note on Fire Safety at Non-Hazardous Waste Transfer Stations</i> ’.	Staff will strive to ensure no incidents occur on site by being vigilant and act on notifiable incidents immediately or in so far as is reasonably practicable. Update the ERP to ensure that it has regard for the Guidance Note.
Infrastructure integrity and drainage.	An Integrity test was completed on the diesel bund in January 2016 and it is Kerry County Council’s intension to carry out the integrity test themselves every 3 years as per Schedule C of Waste Licence W87-01. Next test is on/before January 2019.	Compliance with Bund and tank integrity assessment.
Waste acceptance, Classification and records	Continue to record and document all waste types entering and leaving the site with monthly verifiable reports being produced.	Monthly reports on waste streams produced and verified.

### **Summary of Procedures Developed by the Licensee**

- Revised Emergency Response Procedures and Accident Prevention Procedures were updated during 2017.
- Revised Operational Procedures for the site supervisor which included a daily inspection checklist of 'Emergency Stops' within the confines of the Transfer/ Recycling centre.
- Revised Safe Working Procedures for the site supervisor relating to the loading / unloading and reversing of vehicles within the confines of the Waste Transfer Station.

- **Reported Incidents and Complaints**

EPA inspector has visited the site on the 11<sup>th</sup> October 2016. A report was uploaded to EDEN in December 2016 outlining our proposals to address the issues. The Agency requested that our ERP must have regard to the "*Guidance note on Fire Safety at non-hazardous Waste Transfer Stations (December 2013)*". This has been completed and uploaded to EDEN in 2017 and has taken on board the above guidance note.

Kerry County Council have devised a protocol for prompt reporting of any exceedances and have assessed trigger levels / parameters for off-site surface water sampling locations.

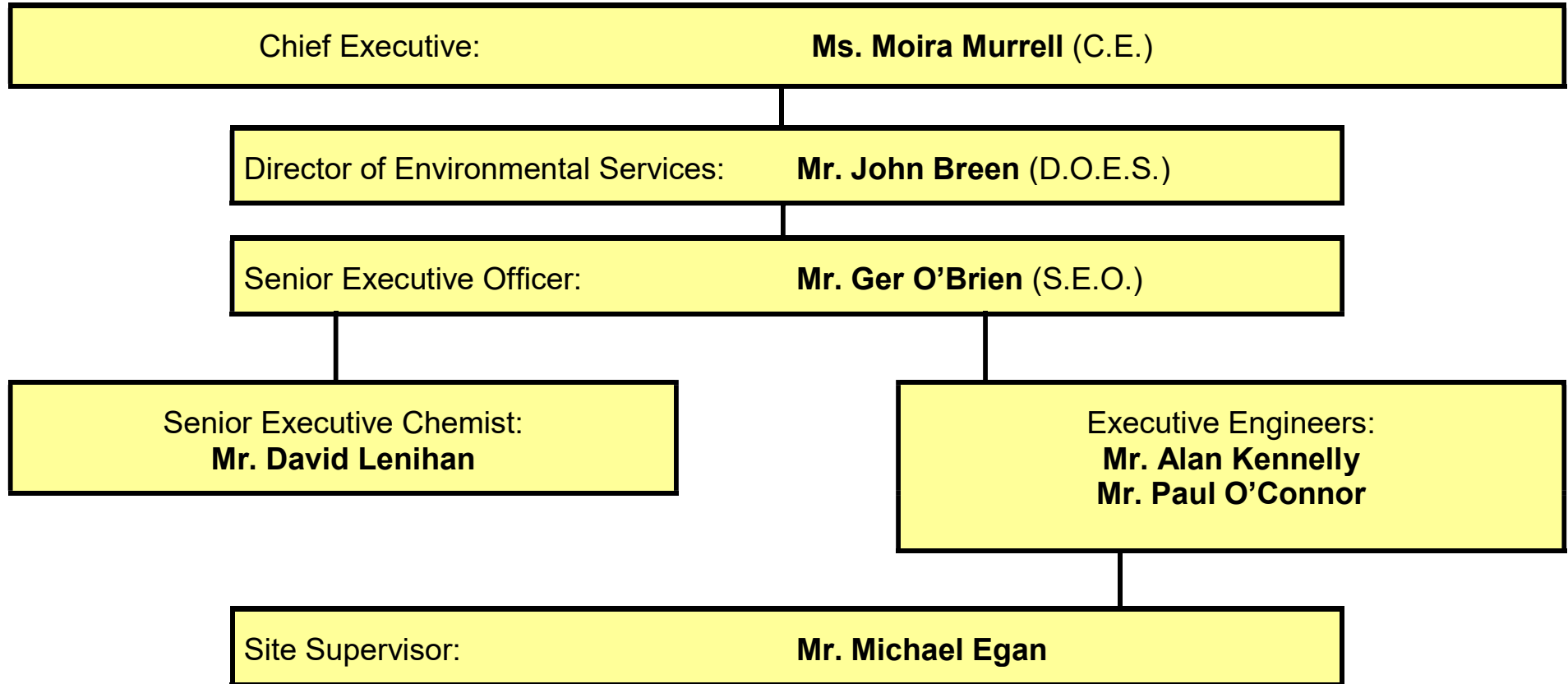
We have continued to test BOD and suspended solids at the WWTP to ensure compliance with our licence and this issue has been ongoing throughout 2017.

## Report on Financial Provision at Cahersiveen Civic Amenity Site, 2017

<b>Statement of Costs for Waste Operations - Cahersiveen 2017</b>		
<b>Accelem</b>	<b>Account Element</b>	<b>Total €</b>
60030	Wages	€ 18,790
60040	Salaries	€ 11,237
60100	ER PRSI	€ 3,290
60200	Overtime	€ 1,975
60500	Annual Leave	€ 1,837
60510	Bank Holiday Leave	€ 514
60600	Travel/Subsistence	€ 1,834
65500	Minor Contracts- Trade Services & other works	€ 117,399
65965	Transfer to/from Cap/Rev (Exp)	€ -
66500	Non-Capital Equip Purchase - Fire Services	€ 10
67500	Non-Capital Equip Purchase - Computers	€ 5
68000	Non-Capital Equip Purchase - Office Equip/Furn	€ 108
68500	Non-Capital Equip Purchase - Other	€ 199
69000	Hire (Ext) - Plant/Transport/Machinery & Equipment	€ 321
69200	Repairs & Maint - Plant	€ -
69260	Repairs & Maint - Other Equip	€ 4
69400	Transfers from Machinery Yard	€ 12,064
69600	Other Vehicle Expenses	€ 102
70000	Materials	€ 1,547
70990	Issues from Stores	€ -
71000	Insurance	€ 381
73400	Staff Travelling & Subsistence Expenses	€ 1,411
76000	Communication Expenses	€ 309
76100	Postage	€ 22
77100	Courier	€ -
77200	Security - Property	€ -
78000	Training	€ -
79900	Consultancy/Professional Fees and Expenses	€ 528
80000	Advertising	€ 110
81000	Printing & Office Consumables	€ -
82100	Statutory Contributions to Other Bodies	€ 3,738
85100	Rates & Other LA Charges	€ 862
86000	Energy / Utilities	€ 1,829
<b>TOTAL</b>		<b>€ 180,423</b>

<b>Statement of Costs for Recycling Operations - Cahersiveen 2017</b>		
<b>Accelem</b>	<b>Account Element</b>	<b>Total €</b>
60030	Wages	€ 18,229
60040	Salaries	€ 11,137
60100	ER PRSI	€ 3,265
60200	Overtime	€ 2,223
60500	Annual Leave	€ 1,889
60510	Bank Holiday Leave	€ 697
60600	Travel/Subsistence	€ 1,884
65500	Minor Contracts- Trade Services & other works	€ 24,225
66500	Non-Capital Equip Purchase - Fire Services	€ 77
69000	Hire (Ext) - Plant/Transport/Machinery & Equipment	€ 25
69200	Repairs & Maint - Plant	€ -
69260	Repairs & Maint - Other Equip	€ 26
69400	Transfers from Machinery Yard	€ -
70000	Materials	€ 2,578
70985	Issue from Fuel Stores	€ 14
70990	Issues from Stores	€ 5,636
70991	Returns to Stores	-€ 168
70994	Return to Fuel Stores	-€ 1
73400	Staff Travelling & Subsistence Expenses	€ 1,181
76000	Communication Expenses	€ 220
77100	Courier	€ -
77200	Security - Property	€ -
78000	Training	€ -
80000	Advertising	€ -
81000	Printing & Office Consumables	€ 35
82100	Statutory Contributions to Other Bodies	€ 3,738
85100	Rates & Other LA Charges	€ -
86000	Energy / Utilities	€ 53
<b>TOTAL</b>		<b>€ 76,962</b>

**16.0 Management and Staffing Structure at the Facility December 2017**



## **17.0 Programme of Public Information**

The following files are available for inspection on site by members of the public:

- AER of previous reporting years
- All correspondence with the Agency
- Surface Water Monitoring Results
- Incident/Complaints Register
- Tonnage of waste accepted on site
- Characterisation of waste accepted on site
- Operational Procedure Manual
- Waste Acceptance Procedure
- Information on Recycling Initiatives e.g. leaflets.
- Environmental Management System.



Appendix I: **Waste Categorisation and Statistics 2017**

<b>Cahersiveen Transfer Station Residual Waste - Tonnage Period 01/01/17 to 31/12/2017</b>													
Levied Waste as categorised by Waste Regulations						Non Levied Waste as categorised by Waste Regulations				TOTALS			
Month	Public Car Household	* Non weighed waste inclusive of tickets	Account Holders VAT Inclusive	Account Holder VAT Exclusive (Valentia Island Industries)	KCC Levied Waste eg. Housing, corporate affairs	KCC Road Sweeping/Street Cleaning	Graveyard Waste	KCC Clean Ups / F'tipping	Environment Flytipping / Clean Ups - Invs Raised to Environment	Total KCC Tonnage not subject to Levy	Total of Waste Over Weighbridge	Total Waste Out of Facility - Including Ticket Waste	No. Loads out of TS
January 2017	16.8	26.82	1.06	0.00	1.08	1.28	0.00	0.6	0.72	2.60	21.54	48.36	5
January 2016	20.04	15.86	1.38	0.56	1.12	2.5	0.00	0.48	0.7	3.68	26.78	42.64	4
February 2017	15.20	5.22	2.52	1.1	0	0.98	0.28	1.16	1.08	3.50	22.32	27.54	3
February 2016	15.68	12.34	0.76	0.68	0.78	1.28	0.00	1	0.84	3.12	21.02	33.36	3
March 2017	22.1	23.84	0.62	0	0	1.96	0	0.74	0.86	3.56	26.28	50.12	5
March 2016	18.6	15.42	1.28	0.6	0.3	0.90	0.24	0.68	0.92	2.74	23.52	38.94	4
April 2017	24.52	10.18	0.1	1.04	0	1.48	0.44	2.46	2.2	6.58	32.24	42.42	4
April 2016	17.42	19.68	1.4	1.12	2.52	1.16	0.00	0.3	3.22	4.68	27.14	46.82	5
May 2017	18.20	13.04	1.98	0.54	0.66	1.04	0.24	1.68	1.84	4.80	26.18	39.22	4
May 2016	21.04	3.66	1.26	0.56	0	0.96	0	0.86	0.44	2.26	25.12	28.78	3
June 2017	22	17.04	2.66	0.58	0	1.82	0	3.1	1.7	6.62	31.86	48.90	5
June 2016	27.72	18.4	1.34	0	0.18	1.72	0.26	1.78	1.24	5.00	34.24	52.64	5
July 2017	26.18	9.76	2.18	1.08	0.2	1.36	0.3	4.2	1.56	7.42	37.06	46.82	4
July 2016	33.62	15.32	3.12	0.66	0.24	2.4	0	3.66	0.82	6.88	44.52	59.84	6
August 2017	31.94	22.7	2.04	0.00	0.42	5.46	0	6.04	1.4	12.90	47.30	70.00	7
August 2016	31.66	23.06	2.9	0.6	0	4.84	0.26	3.7	0.7	9.50	44.66	67.72	7
September 2017	24.94	18.52	3.06	0.5	0.14	1.96	0	2.14	1.32	5.42	34.06	52.58	5
September 2016	24.72	17.88	2.14	1.94	0.62	1.72	0	1.94	0.54	4.20	33.62	51.50	5
October 2017	19.72	6.34	0.96	0.62	1.56	2.06	0	1.42	1	4.48	27.34	33.68	3
October 2016	19.08	16.72	0	0.74	0.4	3.56	0	0.34	0.98	4.88	25.10	41.82	4
November 2017	19.42	17.12	1.36	0	2.4	2.44	0	1.06	0.7	4.20	27.38	44.50	4
November 2016	20.28	12.46	2.6	0	0.16	2.48	0	0.96	0.64	4.08	27.12	39.58	4
December 2017	22.42	12.90	1.36	0.74	0.78	1.34	0	1.08	0.92	3.34	28.64	41.54	4
December 2016	21.34	5.36	1.24	0.54	0.04	1.4	0	0.84	1.2	3.44	26.60	31.96	3
<b>Total Tonnage 2017</b>	<b>263.44</b>	<b>183.48</b>	<b>19.90</b>	<b>6.20</b>	<b>7.24</b>	<b>23.18</b>	<b>1.26</b>	<b>25.68</b>	<b>15.30</b>	<b>65.42</b>	<b>362.20</b>	<b>545.68</b>	<b>53</b>
<b>Total Tonnage 2016</b>	<b>271.20</b>	<b>176.16</b>	<b>19.42</b>	<b>8.00</b>	<b>6.36</b>	<b>24.92</b>	<b>0.76</b>	<b>16.54</b>	<b>12.24</b>	<b>54.46</b>	<b>359.44</b>	<b>535.60</b>	<b>53</b>
Cumulative Totals for 2017	480.26					65.42							

## Household Waste Deposited at Cahersiveen Civic Amentity Site in 2017

Material type	Suggested EWC codes	Jan	Feb	Mar	Apr	May	Jun	Jul	Aug	Sep	Oct	Nov	Dec	Total
Mixed residual waste (Trans Waste out of facility)	20 03 01	48.36	27.54	50.12	42.42	39.22	48.90	46.82	70.00	52.58	33.68	44.50	41.54	545.680
<b>Organic waste (food and garden)</b>														
garden	20 02 01	0.00	0.00	0.00	0.00	0.00	0.00	0.00	0.00	0.00	0.00	0.00	0.00	0.000
Mixed dry recyclables (Ecosence Bags)	15 01 06	2.24	1.08	1.08	0.80	4.90	4.58	3.74	6.08	3.36	3.28	6.46	2.10	39.700
<b>Cardboard, newspaper and other paper</b>														
cardboard packaging	15 01 01	1.82	1.46	1.62	0.32	2.54	1.42	1.96	0.00	4.62	0.00	2.12	0.00	17.880
newspaper and magazines	15 01 01	3.12	2.42	4.76	0.92	0.00	0.00		0.00	0.00	0.00	0.00	0.00	11.220
<b>Glass</b>														
glass packaging (bottles)	15 01 07	1.4870	2.2670	1.3880	2.0080	2.2790	1.7450	0.3010	2.5150	3.0980	1.6540	2.0390	0.8510	21.632
<b>Metals</b>														
aluminium cans (packaging)	15 01 04	0.0730	0.1130	0.0390	0.1090	0.0850	0.0400	0.0350	0.0470	0.0820	0.0600	0.0490	0.0170	0.749
steel cans (packaging)	15 01 04	0.1620	0.3060	0.0830	0.3140	0.0880	0.2350	0.1650	0.0780	0.2510	0.2870	0.1700	0.1480	2.287
other metals (scrap metals)	20 01 40	3.36	3.34	1.10	5.56	4.38	3.50	1.50	6.50	4.00	3.22	3.46	2.98	42.900
<b>Plastic</b>														
plastic packaging (bottles)	20 01 39	1.28	1.08	1.76	0.52	0.00	0.00	0.00	0.00	0.00	0.00	0.00	0.00	4.640
<b>Textiles</b>														
textiles, non-packaging (clothes)	20 01 11	0.12	0.00	0.10	0.24	0.16	0.00	0.18	0.30	0.12	0.14	0.22	0.24	1.820
<b>Batteries</b>														
lead acid batteries and accumulators (Car Batteries)	20 01 33	0.000	0.00	0.000	0.00	0.00	0.00	0.00	0.000	0.00	0.00	0.00	0.00	0.000
Ni-Cd batteries and accumulators	20 01 33	0.0000	0.9840	0.0000	0.0000	0.0000	0.0000	0.0000	0.0000	0.0000	0.0000	0.0000	0.0000	0.984
<b>Household Hazardous Waste</b>														
Waste mineral oils (Engine Oil)	13 02 08	0.000	0.000	0.000	0.000	0.000	0.000	0.00	0.00	1.32	0.00	0.00	0.00	1.320
Oil filters (vehicles)		0.00	0.00	0.00	0.00	0.00	0.00	0.00	0.00	0.00	0.00	0.00	0.00	0.000
Oil containers (mineral oil) - plastic + metal		0.00	0.00	0.00	0.00	0.00	0.00	0.00	0.00	0.00	0.00	0.00	0.00	0.000
Waste cooking or vegetable oils	20 01 25	0.00	0.00	0.00	0.00	0.00	0.00	0.00	0.00	0.00	0.00	0.00	0.00	0.000
Waste paint and varnish (including containers)	20 01 27	0.00	0.00	0.00	0.00	0.00	0.00	0.00	0.00	0.00	0.00	0.00	0.00	0.000
Aerosols	14 06 01	0.00	0.00	0.00	0.00	0.00	0.00	0.00	0.00	0.00	0.00	0.00	0.00	0.000
<b>WEEE collected by compliance schemes</b>														
<b>CRT</b>	20 01 36	1.612	1.170	1.384	0.000	1.550	1.040	0.000	2.279	1.253	0.545	0.000	1.431	12.264
<b>SDA - Small Domestic Appliances</b>	20 01 36	2.450	3.065	1.354	0.000	3.226	1.952	0.000	2.490	2.808	2.311	0.000	2.610	22.266
<b>LDA - Large Domestic Appliances</b>	20 01 36	0.000	2.391	1.219	0.000	1.785	0.526	0.697	0.000	1.960	0.000	1.680	1.025	11.283
<b>Cold</b>	20 01 36	0.632	1.525	0.639	0.000	1.831	0.346	1.095	0.000	0.000	1.258	1.905	0.173	9.404
Flourescent Tubes	20 01 21	0.14	0.00	0.00	0.00	0.00	0.00	0.00	0.29	0.00	0.00	0.00	0.04	0.469
Foul Water Septic Tanks Cahersiveen CA	20 0304	0.00	0.00	0.00	0.00	0.00	0.00	0.00	0.00	0.00	0.00	0.00	0.00	0.000
<b>Total Recycling less Mixed Municipal Waste &amp; Foul Water</b>		<b>18.36</b>	<b>21.20</b>	<b>16.526</b>	<b>10.791</b>	<b>22.824</b>	<b>15.384</b>	<b>9.673</b>	<b>20.579</b>	<b>22.872</b>	<b>12.755</b>	<b>18.103</b>	<b>11.614</b>	<b>200.818</b>
<b>Total Recycling Including Mixed Municipal Waste &amp; Foul Water</b>		<b>66.72</b>	<b>48.74</b>	<b>66.646</b>	<b>53.211</b>	<b>62.044</b>	<b>64.284</b>	<b>56.493</b>	<b>90.579</b>	<b>75.452</b>	<b>46.435</b>	<b>62.603</b>	<b>53.154</b>	<b>746.50</b>

# Appendix II : Lab Results

## Kerry County Council - All Laboratory Results Report (Lab)

Please note that in accordance with Quality assurance procedures some of this data may be

parameters marked with \* are accredited in this laboratory (for details of scope see sheet attached with this report)

Note 2 : Parameters marked with \*\* are subtracted

Parameter	Temperature	pH*	Conductivity*	B.O.D.	C.O.D.	Chloride*	Sulphate*	Ammonia*	Total Nitrogen	Dissolved Oxygen	Suspended Solids	Arsenic	Barium	Antimony	Lead	Nickel	Manganese	Iron	Copper	Chromium	Cadmium	Barium	Boron	Zinc				
	Reported Name	Min. Value	Max Value Units	DEQ_C	PH	USCM	BOD	HGL	HGL	HGL	HGL	HGL	HGL	HGL	HGL	HGL	HGL	HGL	HGL	HGL	HGL	HGL	HGL	HGL				
Matrix	Sampling Point	Sample Type	Comments																									
Surface water	Cahersiveen Site 1	LANDFILL			5.2	8.9	132	<1.3	14	31.1		<0.05																
Surface water	Cahersiveen Site 2	LANDFILL			13.5	7.9	115	<1.3	32	28.2		<0.05																
Surface water	Cahersiveen Site 2	LANDFILL			13.5	8.9	115	<1.3	34	28.1		<0.05																
Surface water	Cahersiveen Site 2	LANDFILL			14.5	7.8	110	<1.3	34	25.8		<0.05																
Surface water	Cahersiveen Site 2	LANDFILL			14.5	8.9	110	<1.3	45	25.8		<0.05																
Surface water	Cahersiveen Site 2	LANDFILL	up stream sample -good flow			8.8	103	<1.3	37	23.8	<5	<0.05	<1.03		2	<1	<1	<0.5	<1	<10	41.7	589	0.005	1.1	<1	0.001	0.012	<20
Surface water	Cahersiveen Site 2	LANDFILL			7.9	8.9	132	<1.3	21	35.5		<0.05			10.8	2												
Surface water	Cahersiveen Site 2	LANDFILL			7.8	8.7	132	<1.3	23	35.8		<0.05			10.9	1												
Surface water	Cahersiveen SW2	LANDFILL			7.3	7.1	148	<1.3	19	29.7		<0.05			11.7	<1												
Surface water	Cahersiveen SW3	LANDFILL			14.2	7.5	102	<1.3	30	18		<0.05			9.3	8												
Surface water	Cahersiveen SW3	LANDFILL			15.1	7.5	119	<1.3	34	20.2		<0.05			9.2	<1												
Surface water	Cahersiveen SW3	LANDFILL	taken from manhole			8.8	113	<1.3	50	21.4	<5	<0.05	<1.03		47	<1	<1	<0.5	<1	<10	25.4	837	0.004	1.3	<1	0.008	0.014	<20
Surface water	Cahersiveen SW3	LANDFILL			8.1	8.7	198	<1.3	21	49.8		<0.05			10.4	2												
Surface water	Cahersiveen Site 4	LANDFILL			8.2	8.1	185	<1.3	32	38.4		<0.05			7.5	8												
Surface water	Cahersiveen Site 4	LANDFILL			12.5	8.8	139	<1.3	45	32		0.07			5.4	14												
Surface water	Cahersiveen Site 4	LANDFILL			14	7.2	120	<1.3	37	24.8		<0.05			4.5	11												
Surface water	Cahersiveen Site 4	LANDFILL	slot of iron solids visible			8.7	132	2.5	102	29.8	8.8	<0.05	2.53		188	<1	<1	<0.5	<1	<10	25.7	1708	0.004	1.3	<1	0.009	0.015	20
Surface water	Cahersiveen Site 4	LANDFILL			8.7	8.2	214	<1.3	43	56.5		<0.05			8.8	28												
Surface water	Cahersiveen Site 5	LANDFILL			7.2	8.7	280	2.2	48	29.2		4.78			9.1	3												
Surface water	Cahersiveen Site 5	LANDFILL			7.2	8.7	248	1.9	38	29.7		3.57			9.1	2												
Surface water	Cahersiveen Site 5	LANDFILL			13.5	8.8	184	<1.3	29	19.3		3.45			8.5	1												
Surface water	Cahersiveen Site 5	LANDFILL			18.1	7	178	<1.3	39	21.9		2.43			8.5	3												
Surface water	Cahersiveen Site 5	LANDFILL	stagnat pool very little movement blocked with veg- slot of iron pen																									
Surface water	Cahersiveen Site 5	LANDFILL			8.7	8.8	133	1.8	45	21.8	<5	0.77	<1.03		4	<1	<1	<0.5	<1	<10	28	2347	0.005	1.1	<1	0.01	0.02	<20
Surface water	Cahersiveen Site 5	LANDFILL			8.3	8.8	185	<1.3	35	38.1		1.5			9.8	4												

## Lab Results of Cahersiveen Surface Water Monitoring

**Kerry County Council - All Laboratory Results Report (Lab)**

Please note that in accordance with Quality assurance procedures some of this data may be provisional and may be subject to further revision. This data is not validated until issued in report format

parameters marked with # are accredited in this laboratory (for details of scope see sheet attached with this Note 2 - Parameters marked with \*\* are subcontracted

Matrix	Sampling Point	Sample Type	Visual Inspection	Colour	Temperature	pH	Conductivity	B.O.D.	C.O.D.	Ammonia	Total Coliform Bacteria	Total Nitrogen	Dissolved Oxygen	Suspended Solids	Arsenic	Mercury	Ammonia	Lead	Nickel	Fluoride	Iron	Copper	Chromium	Cadmium	Barium	Boron	Zinc	Total GPO	Units
																													None
Foul effluent	Cahersiveen Sals	LANDFILL		Earthy		6.6	13	405	52.4					96														<1	
Foul effluent	Cahersiveen Sals	LANDFILL		Dark		6.3	1030	5.4	120	9.96				162														<1.0	
Foul effluent	Cahersiveen Sals	LANDFILL		Earthy		7.3	820	7.3	113	16.5				194														<1.0	
Foul effluent	Cahersiveen Sals	LANDFILL				6.5	416	12	130	0.71				158															
Foul effluent	Cahersiveen Sals	LANDFILL	Clear some sediment	Muddy	15.2	7.2	811	25	141	3.53				48															
Foul effluent	Cahersiveen Sals	LANDFILL				7.2	369	121	3245	1.18		34.05		3184	1.1	<1	0.9	<1	<10	64.2	239	0.009	1	<1	0.01	0.159	26		
Foul effluent	Cahersiveen Sals	LANDFILL	No appearance of FOC			6.7	25	2055	1.4					1290															
Foul effluent	Cahersiveen Sals	LANDFILL	No appearance of FOC			6.8	14	727	1.06					696															
Foul effluent	Cahersiveen Sals	LANDFILL				7.2	501	3.8	122	1.43				80															

**Lab Results of Cahersiveen Foul Water Monitoring**

**Appendix III – Results of Dust Monitoring 2017**



OUR REF: RP 2017 | KERRY COUNTY COUNCIL – CAHERCIVEEN CIVIC AMENITY SITE | 38710 C (Rev 00)

PAGE 01 | 01

**ANALYSIS REPORT**

<b>CUSTOMER:</b>	KERRY COUNTY COUNCIL CAHERCIVEEN CIVIC AMENITY SITE	<b>SAMPLE TYPE:</b>	BERGERHOFF DEPOSIT GAUGE
<b>ADDRESS:</b>		<b>CONDITION OF SAMPLE ON RECEIPT:</b>	Satisfactory
<b>REPORT TO:</b>	PAUL O CONNOR	<b>DATE SAMPLED:</b>	01 August – 05 September 2017
<b>SAMPLED BY:</b>	Danny O Leary, Southern Scientific Services Ltd	<b>DATE RECEIVED:</b>	05 September 2017
<b>SAMPLING PT:</b>	CAHERCIVEEN CIVIC AMENITY SITE	<b>DATE ANALYSED:</b>	13 – 26 September 2017
<b>PROPOSAL REF:</b>		<b>DATE REPORTED:</b>	06 October 2017
		<b>WORK NO:</b>	38710 C   17P-038

**TABLE OF RESULTS – DUST ANALYSIS (F)**

Method:	Lab Ref:	Your Ref:	TOTAL PARTICULATES mg/m <sup>3</sup> /day	INORGANIC PARTICULATES mg/m <sup>3</sup> /day	Limit mg/m <sup>3</sup> /day <i>(Supplied by Customer)</i>
SCP 039	C17-Sep 074	Caherciveen ST 01	301	97	350
SCP 039	C17-Sep 075	Caherciveen ST 02	91	39	350
SCP 039	C17-Sep 076	Caherciveen ST 03	207	58	350

*Ruth Murphy*  
Ruth Murphy  
Deputy Chemistry Laboratory Manager

Index to symbols used:

*	Analysis is not INAB accredited.
(F)	Analysis carried out at our Farranfene Laboratory.

- The results relate only to the items tested.
- Opinions and interpretations expressed herein are outside the scope of INAB accreditation.
- The analysis report shall not be reproduced except in full without written approval of the laboratory.
- Sampling time is outside the scope of this test. This time is used to calculate the results.



## Appendix IV – Results of Noise Monitoring

It is concluded that activities at the waste transfer station are not adversely impacting on the noise environment at the nearest noise sensitive location, which is quite distant from the facility.

The waste transfer station does not generate noise at night time when the facility is closed.



**southern scientific  
services ltd**

<p style="text-align: center;"><b>ENVIRONMENTAL NOISE SURVEY 2017</b></p> <p style="text-align: center;"><b>CAHERCIVEEN WASTE TRANSFER STATION</b></p> <p style="text-align: center;"><b>INCHAMACTEIGE</b></p> <p style="text-align: center;"><b>CAHERCIVEEN</b></p> <p style="text-align: center;"><b>CO. KERRY</b></p> <p style="text-align: center;"><b>W0087-01</b></p>
---

<b>Requested By:</b>	P. O' Connor Kerry County Council
<b>Prepared By:</b>	Sinead Fagan Southern Scientific Services Ltd
<b>Date Reported:</b>	10 <sup>th</sup> January 2018
<b>Our Reference:</b>	17P 062

Issue Date	Revision	Checked By	Comment
22/02/2018	00	P. Byrne (B.Sc; Ph.D) Cert. Env. Noise (IOA)	Final report

4park business centre | farranfore | county kerry | ireland | telephone +353 66 9763588 fax +353 66 9763589  
email: [info@southernscientificireland.com](mailto:info@southernscientificireland.com)

Registered in Ireland No. 323196      VAT Reg. No. IE 6343196 M

The  $L_{A10}$  &  $L_{A90}$  noise parameters along with the audible noise sources recorded during the survey assist in providing an understanding of the sources and nature of the noise in the area. The  $L_{A10}$  is the A-weighted sound level, which is exceeded for 10% of the measurement interval and is usually used to quantify traffic noise or other short duration/passing events. In contrast, the  $L_{A90}$  is the A-weighted sound level that is exceeded for 90% of the measurement interval and is usually used to quantify background noise. The  $L_{Aeq}$  is the equivalent continuous sound level during a measurement interval, effectively representing the average A-weighted noise level. The site Waste Licence specifies a day-time limit of 55dB (A)  $L_{Aeq(30\text{ min})}$  at the nearest noise sensitive location. A night-time survey was not undertaken as the transfer station does not operate during night-time hours and there is no source of noise within the site during this period.

The noise survey results demonstrate that the 55dB (A)  $L_{Aeq(30\text{ min})}$  limit was achieved at the site boundary positions - B1, B2, B3 - at all times with the exception of B1 on December 19<sup>th</sup> when the metal from the metal recycling skip was being loaded on to a truck with a rear mounted grab. The loading operation took 20 minutes during which time the truck engine was running and the grab was operating. This operation occurs every 4-6 weeks at the site. However, given the separation distance of over 700m from the nearest noise sensitive location (B4) it is concluded that the associated noise emissions will have attenuated to below 55dB (A) before reaching this location and are unlikely to result in any noise nuisance at the sensitive receptors in the locality whilst being undertaken. The 55dB (A)  $L_{Aeq(30\text{ min})}$  limit was not achieved at B4 during two of the three surveys. The observed exceedances were mainly attributable to traffic on the adjacent local road. Activities at the waste transfer station were not audible at this location. The 1/3 Octave Frequency Spectra show that there was no prominent tonal noise present when assessed following the criteria in Annex D of ISO 1996 (Part 2), 2007.

It is concluded that activities at the waste transfer station are not adversely impacting on the noise environment at the nearest noise sensitive location, and that the site is compliant with its waste licence requirements with respect to noise emissions.

## Appendix V - AER/PRTR Return 2017



| PRTR# : W0087 | Facility Name : Caherciveen Transfer Station | Filename : W0087\_2017.xls | Return Year : 2017 |

[Guidance to completing the PRTR workbook](#)

# PRTR Returns Workbook

Version 1.1.19

<b>REFERENCE YEAR</b>	2017
-----------------------	------

### 1. FACILITY IDENTIFICATION

Parent Company Name	Kerry County Council
Facility Name	Caherciveen Transfer Station
PRTR Identification Number	W0087
Licence Number	W0087-01

#### Classes of Activity

No.	class_name
-	Refer to PRTR class activities below

Address 1	Inchamacteige
Address 2	Caherciveen
Address 3	
Address 4	
	Kerry
Country	Ireland
Coordinates of Location	-10.182 51.9418
River Basin District	IESW
NACE Code	3821
Main Economic Activity	Treatment and disposal of non-hazardous waste
<b>AER Returns Contact Name</b>	Alan Kennelly
<b>AER Returns Contact Email Address</b>	alan.kennelly@kerrycoco.ie
<b>AER Returns Contact Position</b>	EE
<b>AER Returns Contact Telephone Number</b>	0667162014
<b>AER Returns Contact Mobile Phone Number</b>	0879088205
<b>AER Returns Contact Fax Number</b>	0667162001
<b>Production Volume</b>	0.0
<b>Production Volume Units</b>	
<b>Number of Installations</b>	0
<b>Number of Operating Hours in Year</b>	0
<b>Number of Employees</b>	0
<b>User Feedback/Comments</b>	Waste cooking oil (EWC 20 01 25) - 0.0 Tonnes collected Waste paint & varnish (EWC 20 01 27) - 0.0 tonnes collected Waste aerosols (EWC 14 06 01) - 0.00 tonnes collected
<b>Web Address</b>	

### 2. PRTR CLASS ACTIVITIES

Activity Number	Activity Name
50.1	General
50.1	General

### 3. SOLVENTS REGULATIONS (S.I. No. 543 of 2002)

Is it applicable?	
Have you been granted an exemption ?	
If applicable which activity class applies (as per Schedule 2 of the regulations) ?	
Is the reduction scheme compliance route being used ?	

### 4. WASTE IMPORTED/ACCEPTED ONTO SITE

[Guidance on waste imported/accepted onto site](#)

Do you import/accept waste onto your site for on-site treatment (either recovery or disposal activities) ?	
--	--



**SECTION A : SECTOR SPECIFIC PRTR POLLUTANTS**

POLLUTANT		METHOD			Please enter all quantities in this section in KGs			
No. Annex II	Name	M/C/E	Method Code	Designation or Description	ADD EMISSION POINT	QUANTITY		
					Emission Point 1	T (Total) KG/Year	A (Accidental) KG/Year	F (Fugitive) KG/Year
					0.0	0.0	0.0	0.0

ADD NEW ROW | DELETE ROW \* \* Select a row by double-clicking on the Pollutant Name (Column B) then click the delete button

**SECTION B : REMAINING PRTR POLLUTANTS**

POLLUTANT		METHOD			Please enter all quantities in this section in KGs			
No. Annex II	Name	M/C/E	Method Code	Designation or Description	ADD EMISSION POINT	QUANTITY		
					Emission Point 1	T (Total) KG/Year	A (Accidental) KG/Year	F (Fugitive) KG/Year
					0.0	0.0	0.0	0.0

ADD NEW ROW | DELETE ROW \* \* Select a row by double-clicking on the Pollutant Name (Column B) then click the delete button

**SECTION C : REMAINING POLLUTANT EMISSIONS (As required in your Licence)**

POLLUTANT		METHOD			Please enter all quantities in this section in KGs						
Pollutant No.	Name	M/C/E	Method Code	Designation or Description	ADD EMISSION POINT	QUANTITY					
					Emission Point 1	Emission Point 2	Emission Point 3	T (Total) KG/Year	A (Accidental) KG/Year	F (Fugitive) KG/Year	
210	Dust				301.0	91.0	207.0	599.0	0.0	0.0	

ADD NEW ROW | DELETE ROW \* \* Select a row by double-clicking on the Pollutant Name (Column B) then click the delete button

**Additional Data Requested from Landfill operators**

For the purposes of the National Inventory on Greenhouse Gases, landfill operators are requested to provide summary data on landfill gas (Methane) flared or utilised on their facilities to accompany the figures for total methane generated. Operators should only report their Net methane (CH4) emission to the environment under T(total) KG/yr for Section A: Sector specific PRTR pollutants above. Please complete the table below:

Landfill:

Caherciveen Transfer Station

Please enter summary data on the quantities of methane flared and / or utilised

	T (Total) kg/Year	M/C/E	Method Used		Facility Total Capacity m3 per hour
			Method Code	Designation or Description	
Total estimated methane generation (as per site model)	0.0				N/A
Methane flared	0.0				0.0 (Total Flaring Capacity)
Methane utilised in engine/s	0.0				0.0 (Total Utilising Capacity)
Net methane emission (as reported in Section A above)	0.0				N/A

5. ONSITE TREATMENT & OFFSITE TRANSFERS OF WASTE

| FRTR#: W0087 | Facility Name : Cahersiveen Transfer Station | Filename : W0087\_2017.xls | Return Year : 2017 |

28/03/2018 17:18

Please enter all quantities on this sheet in Tonnes

15

Transfer Destination	European Waste Code	Hazardous	Quantity (Tonnes per Year)	Description of Waste	Waste Treatment Operation	Method Used		Location of Treatment	Haz Waste : Name and Licence/Permit No of Next Destination Facility Non Haz Waste: Name and Licence/Permit No of Recover/Disposer	Haz Waste : Address of Next Destination Facility Non Haz Waste: Address of Recover/Disposer	Name and License / Permit No. and Address of Final Recoverer / Disposer (HAZARDOUS WASTE ONLY)	Actual Address of Final Destination i.e. Final Recovery / Disposal Site (HAZARDOUS WASTE ONLY)
						M/C/E	Method Used					
Within the Country	13 02 08	Yes	1.32	other engine, gear and lubricating oils	R1	M	Weighed	Offsite in Ireland	Enva,W0184-1	Clonminam Industrial Estate,Portlaoise,County Laois,Ireland	ENVA Ireland,W0184-01,Clonmamin,Portlaoise,Co Laois,,Ireland	Clonmamin,Portlaoise,Co Laois,,Ireland
Within the Country	15 01 01	No	17.88	paper and cardboard packaging	R3	M	Weighed	Offsite in Ireland	Dillon Waste Ltd,WFP-KY-10-001	The Kerries ,,,Tralee,County Kerry,Ireland		
Within the Country	15 01 02	No	4.64	plastic packaging	R3	M	Weighed	Offsite in Ireland	Dillon Waste Ltd,WFP-KY-10-001	The Kerries ,,,Tralee,County Kerry,Ireland		
Within the Country	15 01 04	No	3.04	metallic packaging	R4	M	Weighed	Offsite in Ireland	Dillon Waste Ltd,WFP-KY-10-001	The Kerries ,,,Tralee,County Kerry,Ireland		
Within the Country	15 01 06	No	39.7	mixed packaging	R3	M	Weighed	Offsite in Ireland	Killamey waste Disposal,W0217-01	Aughacureen,,Killamey ,County Kerry,Ireland		
Within the Country	15 01 07	No	21.632	glass packaging	R5	M	Weighed	Offsite in Ireland	Dillon Waste Ltd,WFP-KY-10-001	The Kerries ,,,Tralee,County Kerry,Ireland		
To Other Countries	16 02 11	Yes	9.404	discarded equipment containing chlorofluorocarbons, HCFC, HFC	R4	M	Weighed	Abroad	Electrical Waste Management,WFP-DS-11-0014-04	Block 648,Jordanstown Drive,Greenogue Ind Estate,Dublin,Ireland	European Metal Recycling,WML 101767,Alexander Dock 1,Bootle,Liverpool,L201BX,U nited Kingdom	Alexander Dock 1,Bootle,Liverpool,L201BX,U nited Kingdom
To Other Countries	16 02 14	No	11.283	discarded equipment other than those mentioned in 16 02 09 to 16 02 13	R4	M	Weighed	Abroad	Electrical Waste Management,WFP-DS-11-0014-04	Block 648,Jordanstown Drive,Greenogue Ind Estate,Dublin,Ireland		
Within the Country	20 01 01	No	11.22	paper and cardboard	R3	M	Weighed	Offsite in Ireland	Dillon Waste Ltd,WFP-KY-10-001	The Kerries ,,,Tralee,County Kerry,Ireland		
Within the Country	20 01 11	No	1.82	textiles	R3	M	Weighed	Offsite in Ireland	Textile Recycling,WPR 014/2	Belgard Road,Tallaght,Dublin,24,Ireland		
To Other Countries	20 01 21	Yes	0.47	fluorescent tubes and other mercury-containing waste	R5	M	Weighed	Abroad	KMK Metals,W0113-01 Eco Fuels	Fossa,Killamey,Kerry,,Ireland	Alba Serviceo GmbH & Co KG,E57757020,Kanalstrasse 64,,Rheine,48432,Germany	Kanalstrasse 64,,Rheine,48432,Germany
Within the Country	20 01 25	No	0.0	edible oil and fat	R1	M	Weighed	Offsite in Ireland	Ltd,WFP/KY/11/005-01			
Within the Country	20 01 34	No	0.98	batteries and accumulators other than those mentioned in 20 01 33	R4	M	Weighed	Offsite in Ireland	Enva,W0184-1	Clonminam Industrial Estate,Portlaoise,County Laois,Ireland		
Within the Country	20 01 35	Yes	22.27	discarded electrical and electronic equipment other than those mentioned in 20 01 21 and 20 01 23 containing hazardous components	R4	M	Weighed	Offsite in Ireland	Electrical Waste Management,WFP-DS-11-0014-04	Block 648,Jordanstown Drive,Greenogue Ind Estate,Dublin,Ireland	The Recycling Village,WFP/MH/11/0005/01 ,Unit 21 Duleek Business Park,Commons,Duleek,County Meath,Ireland	Unit 21 Duleek Business Park,Commons,Duleek,County Meath,Ireland
To Other Countries	20 01 35	Yes	12.264	discarded electrical and electronic equipment other than those mentioned in 20 01 21 and 20 01 23 containing hazardous components	R4	M	Weighed	Abroad	Electrical Waste Management,WFP-DS-11-0014-04	Block 648,Jordanstown Drive,Greenogue Ind Estate,Dublin,Ireland	101767,Alexander Dock 1,Bootle,Liverpool,L201BX,U nited Kingdom	Alexander Dock 1,Bootle,Liverpool,L201BX,U nited Kingdom
Within the Country	20 01 40	No	42.9	metals	R4	M	Weighed	Offsite in Ireland	United Metals,WFP-LK-2013-147A-R1	pk,Ballysimon Road,Limerick,,Ireland		
Within the Country	20 03 01	No	545.68	mixed municipal waste	R3	M	Weighed	Offsite in Ireland	Killamey waste Disposal,W0217-01	Aughacureen,,Killamey ,County Kerry,Ireland		