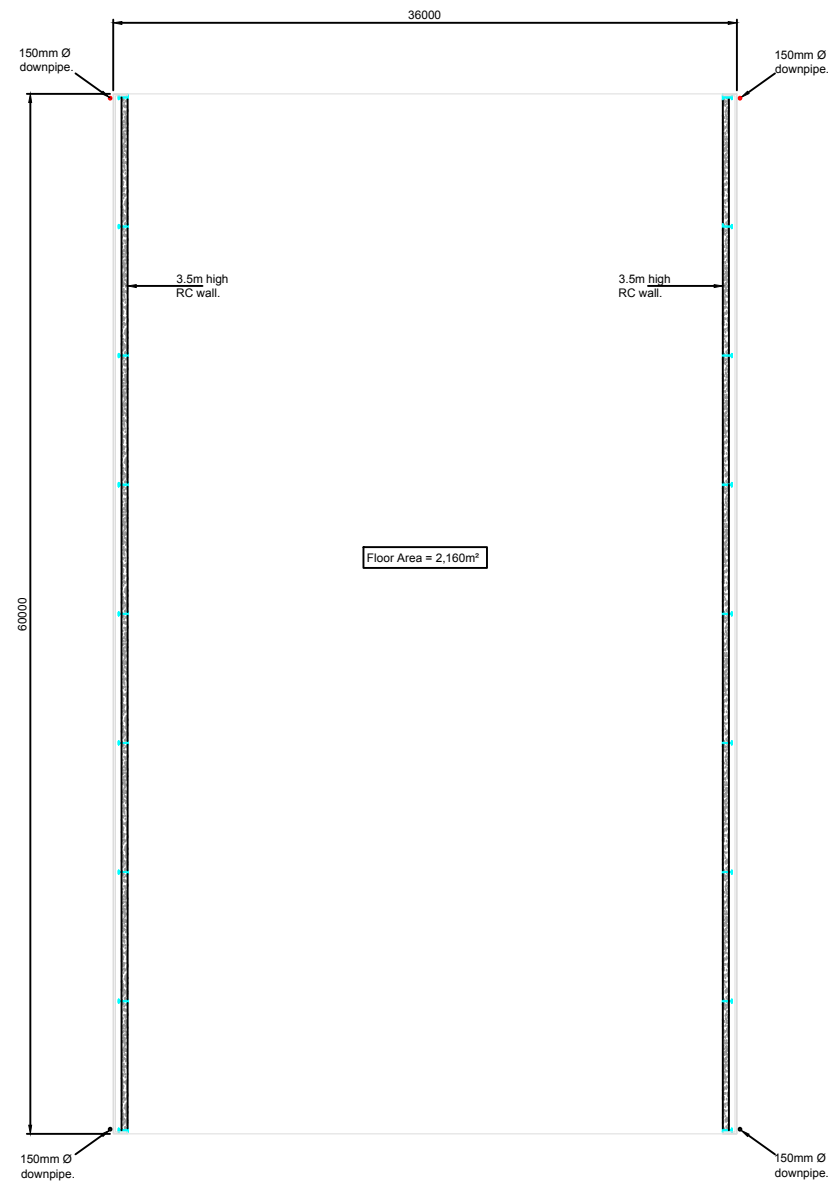


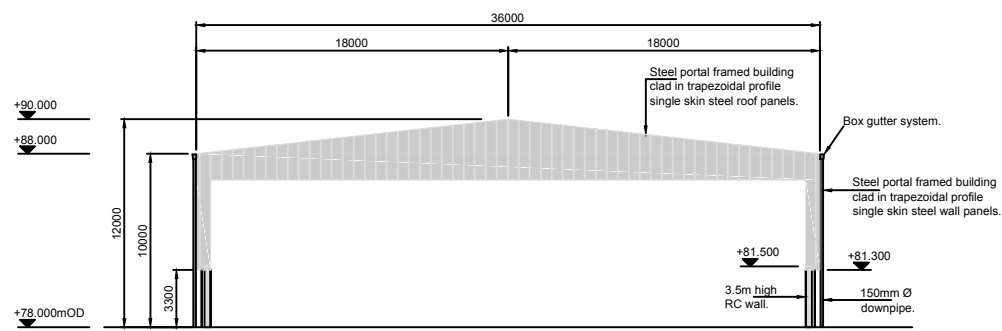
0180.00166.0.FIG_2-6.Proposed ShedPlan-Elevations.dwg



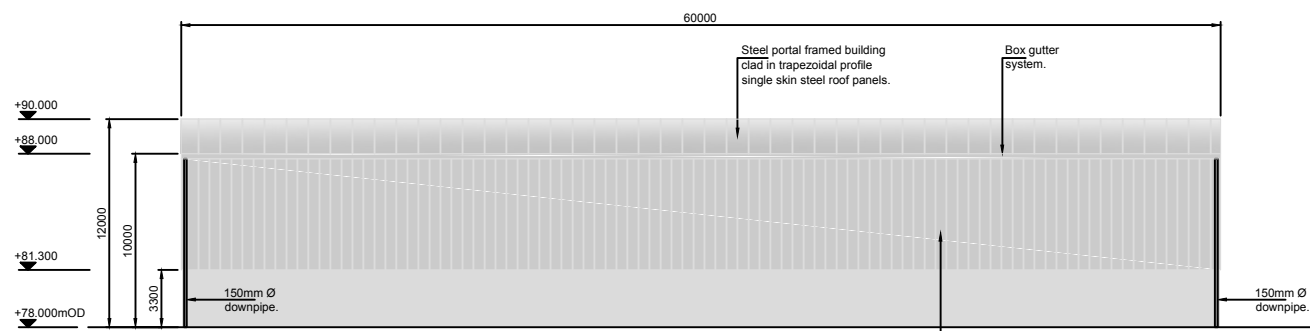
GROUND FLOOR PLAN



ROOF PLAN



NORTH ELEVATION (SOUTH ELEVATION SIMILAR)



EAST ELEVATION (WEST ELEVATION SIMILAR)



NOTES

1. This drawing to be read in conjunction with all relevant Architects and Engineers drawings and specifications.
2. Do not scale this drawing.
3. All cladding finishes to be colour 'Goose Wing Grey' or similar approved.
4. Final ground level = 78mOD.

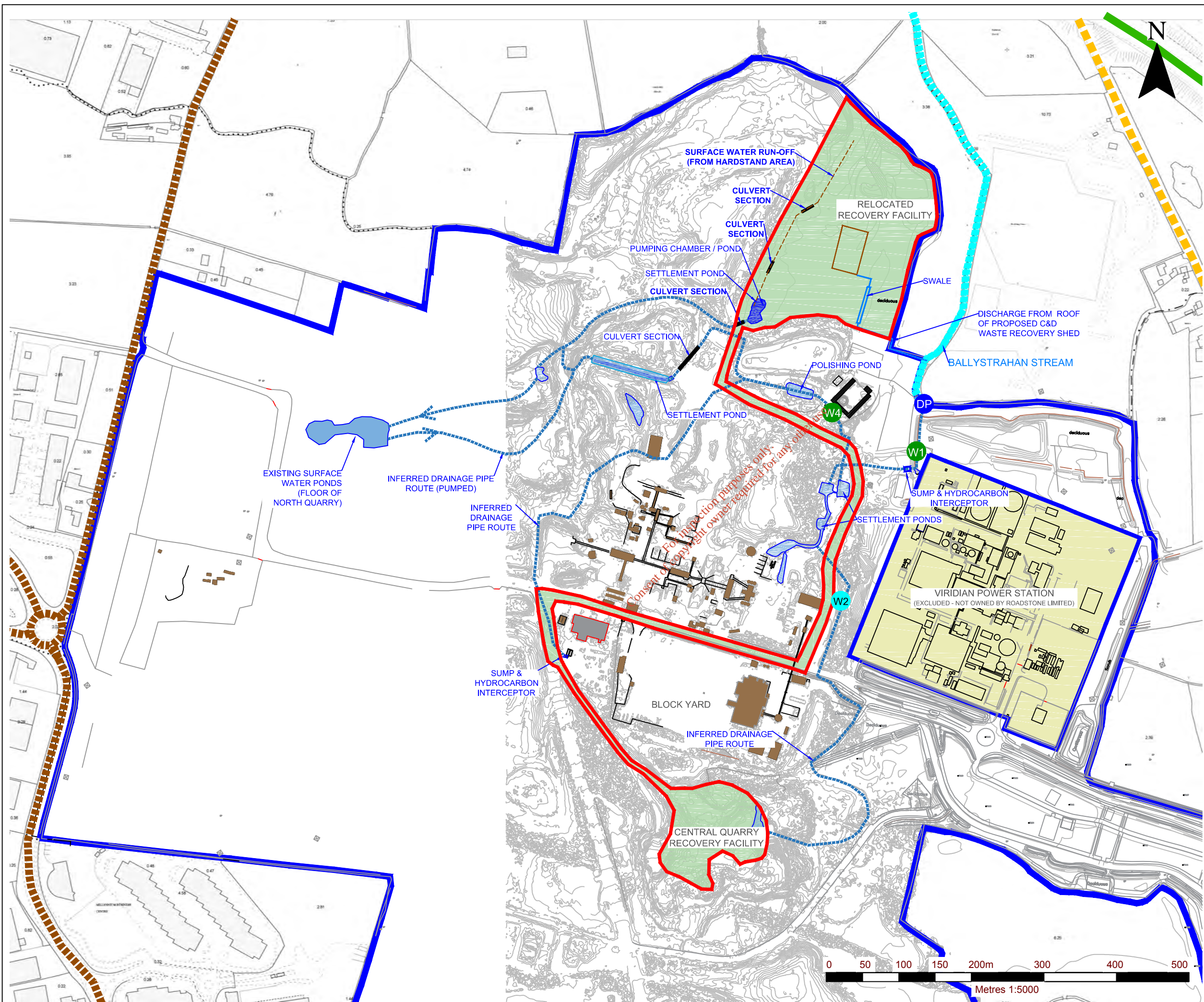
SLR SLR CONSULTING IRELAND
7 DUNDRUM BUSINESS PARK
WINDY ARBOUR
DUBLIN 14
T: +353-1-2964667
F: +353-1-2964676
www.slrconsulting.com

ROADSTONE LIMITED
ENVIRONMENTAL IMPACT STATEMENT
C&D WASTE RECOVERY FACILITY
HUNTSTOWN QUARRY, FINGLAS, DUBLIN 11
PROPOSED OPEN COVERED STORAGE SHED - PLAN & ELEVATIONS

FIGURE 2-6

Scale 1:500 @ A3	Date DECEMBER 2016
---------------------	-----------------------

0180.00166.0.FIG_2-7.Surface Water Management System.dwg



NOTES
 1. EXTRACT FROM 1:2,500 ORDNANCE SURVEY DIGITAL SHEET NO'S. 3062-A, 3062-B, 3062-C, 3062-D, 3063-A, 3063-C, 3130-A & 3130-B.
 2. ORDNANCE SURVEY IRELAND LICENCE NO. SU 0000716 (C) ORDNANCE SURVEY & GOVERNMENT OF IRELAND

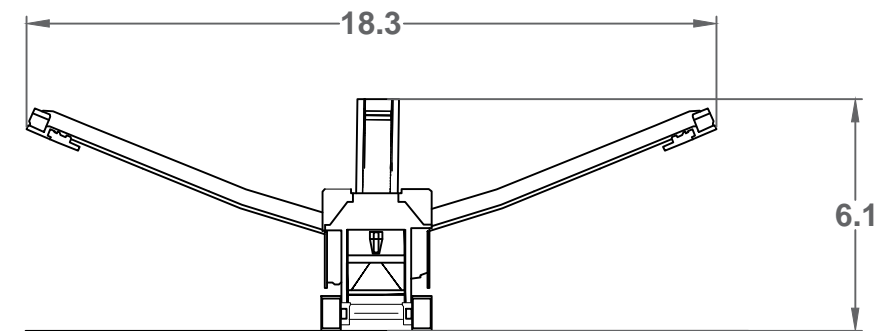
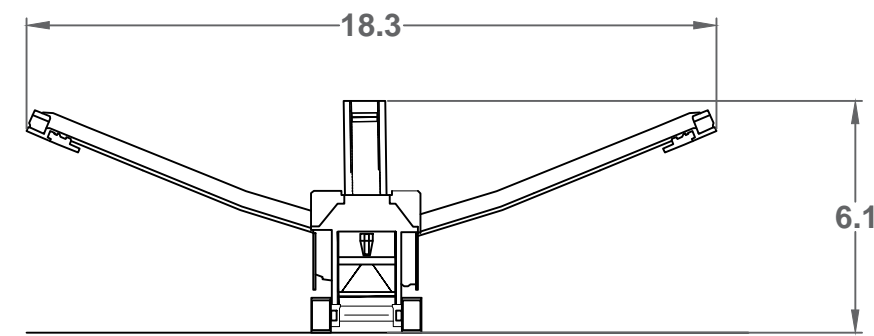
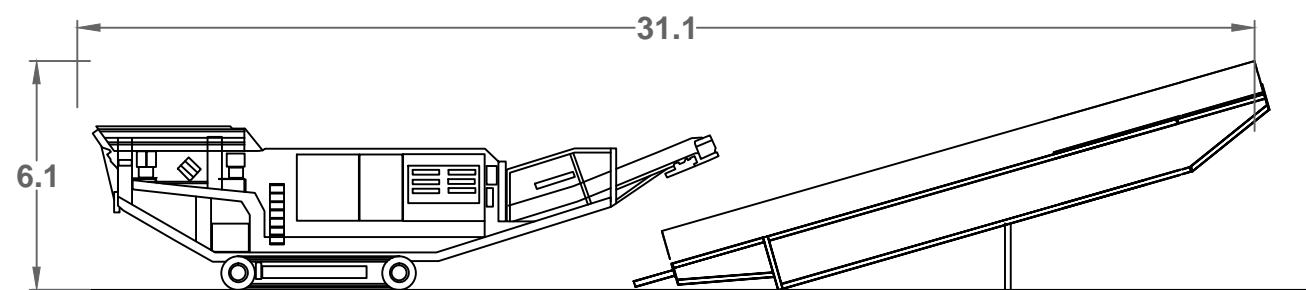
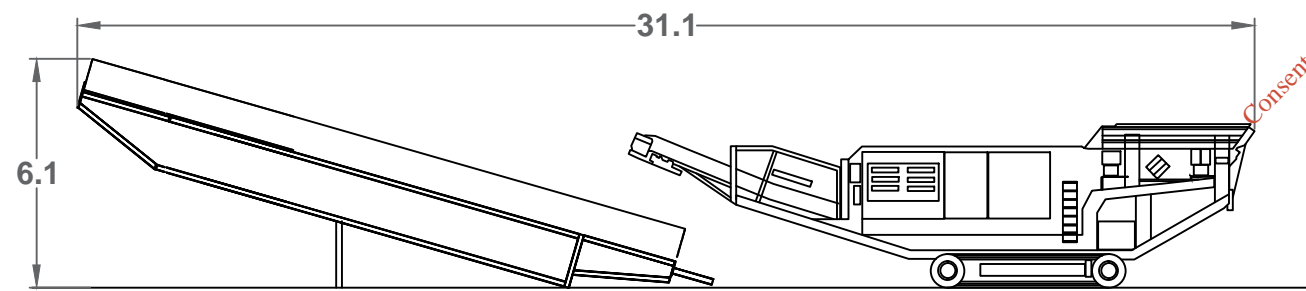
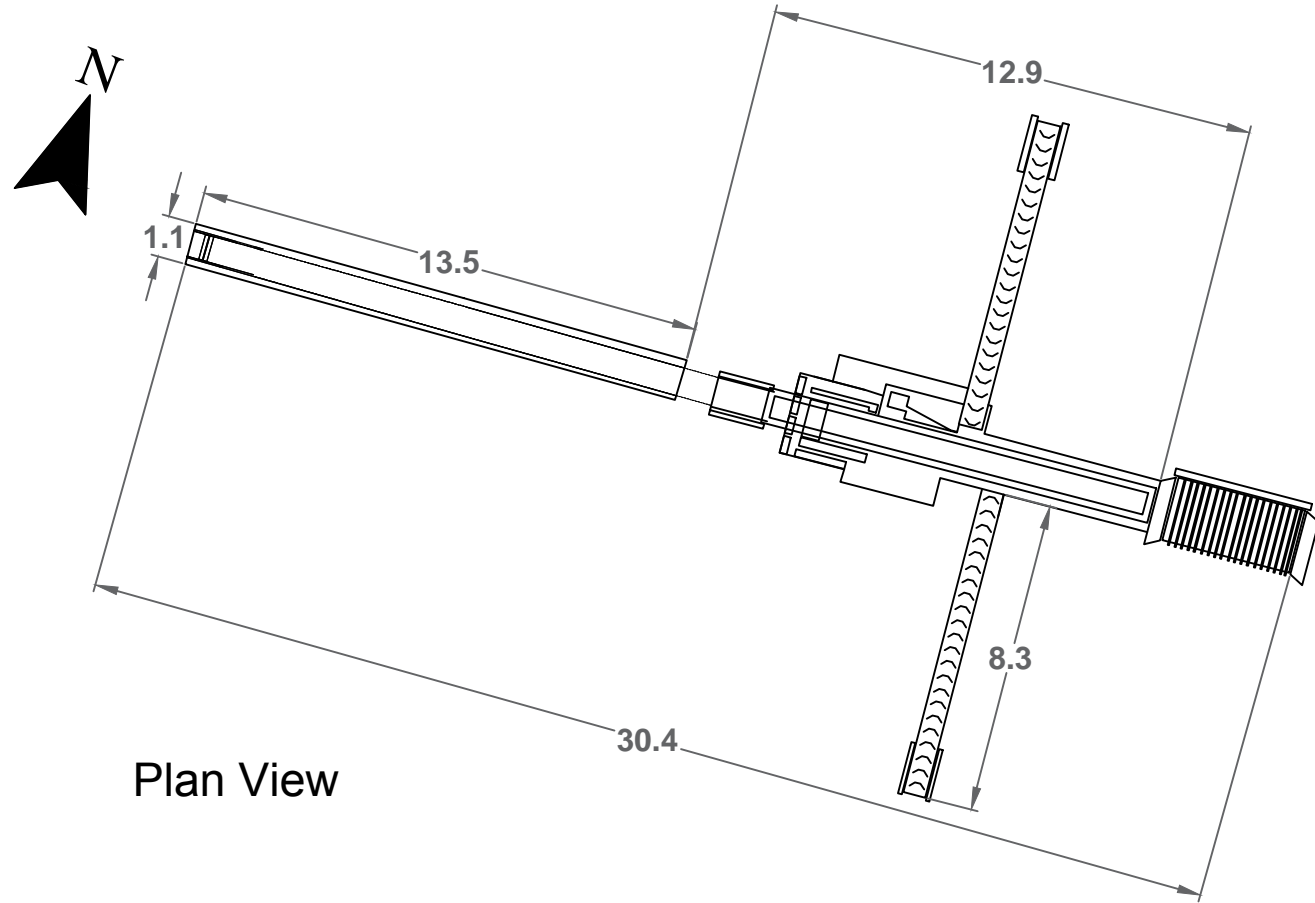
LEGEND

	ROADSTONE LIMITED LAND INTEREST (c. 200.3 ha)
	APPLICATION AREA (c. 8.27 ha)
	N2 DUAL CARRIAGEWAY
	NORTH ROAD (R135)
	BALLYSTRAHAN STREAM
	SURFACE WATER MONITORING LOCATIONS
	DISCHARGE POINT
	SETTLEMENT PONDS

SLR global environmental solutions
 SLR CONSULTING IRELAND
 7 DUNDRUM BUSINESS PARK
 WINDY ARBOUR
 DUBLIN 14
 T: +353-1-2964667
 F: +353-1-2964676
 www.slrconsulting.com

ROADSTONE LIMITED
 ENVIRONMENTAL IMPACT STATEMENT
C&D WASTE RECOVERY FACILITY
 HUNTSTOWN QUARRY, FINGLAS, DUBLIN 11
 SURFACE WATER MANAGEMENT SYSTEM

FIGURE 2-7
 Scale 1:5,000 @ A3
 Date DECEMBER 2016



For inspection purposes only.
Consent of copyright owner required for any other use.



NOTES

LEGEND

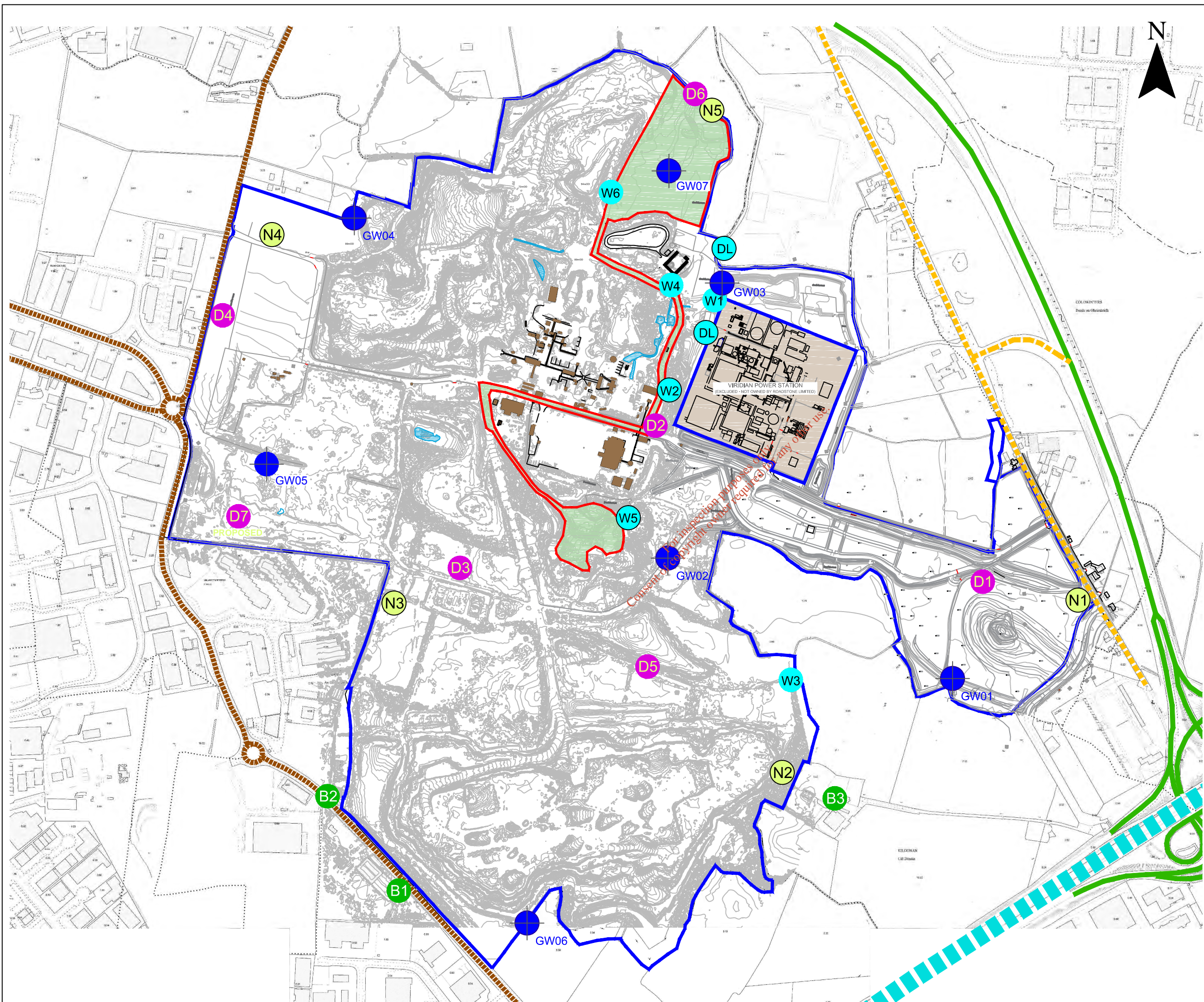
SLR SLR CONSULTING IRELAND
7 DUNDRUM BUSINESS PARK
WINDY ARBOUR
DUBLIN 14
T: +353-1-2964667
F: +353-1-2964676
www.slrconsulting.com

ROADSTONE LIMITED
ENVIRONMENTAL IMPACT STATEMENT
C&D WASTE RECOVERY FACILITY
HUNTSTOWN QUARRY, FINGLAS, DUBLIN 11
MOBILE CRUSHING PLANT DETAILS
PLAN & ELEVATIONS

FIGURE 2-8
Scale 1:200 @ A3 Date DECEMBER 2016

0180.00166.0.FIG_2-8.Crushing Plant.dwg

0180.00166.0.FIG_2-9.Environmental Monitoring Locations.dwg



NOTES
 1. EXTRACT FROM 1:2,500 ORDNANCE SURVEY DIGITAL SHEET NO'S. 3062-A, 3062-B, 3062-C, 3062-D, 3063-A, 3063-C, 3130-A & 3130-B.
 2. ORDNANCE SURVEY IRELAND LICENCE NO. SU 0000716 (C) ORDNANCE SURVEY & GOVERNMENT OF IRELAND

LEGEND

	ROADSTONE LIMITED LAND INTEREST (c. 200.3 ha)
	APPLICATION AREA (c. 8.27 ha)
	N2 DUAL CARRIAGEWAY
	NORTH ROAD (R135)
	LOCAL ROAD
	M50 MOTORWAY
	NOISE MONITORING LOCATION
	DUST MONITORING LOCATION
	GROUNDWATER MONITORING WELL LOCATION
	SURFACE WATER MONITORING LOCATION
	BLAST MONITORING LOCATION

SLR global environmental solutions
 SLR CONSULTING IRELAND
 7 DUNDUM BUSINESS PARK
 WINDY ARBOUR
 DUBLIN 14
 T: +353-1-2964667
 F: +353-1-2964676
 www.slrconsulting.com

ROADSTONE LIMITED
 ENVIRONMENTAL IMPACT STATEMENT
C&D WASTE RECOVERY FACILITY
 HUNTSTOWN QUARRY, FINGLAS, DUBLIN 11
 ENVIRONMENTAL MONITORING LOCATIONS

FIGURE 2-9
 Scale 1:8,000 @ A3
 Date DECEMBER 2016