

# Kerry County Council



**Waste Licence Ref No. W0087-01**

**Caherciveen Transfer Station  
Annual Environmental Report**

**Reporting Period:  
January 1<sup>st</sup> 2016 – December 31<sup>st</sup> 2016**

***Prepared By:***  
*Environmental Services Section,  
Kerry County Council,  
Maine Street,  
Tralee,  
Co. Kerry.*

*March 2017.*

1.0	Introduction .....	3
2.0	Reporting Period .....	3
3.0	Waste Activities Carried out at the Facility .....	3
4.0	Quantity & Composition of Waste Received, Disposed & Recovered during 2016	5
5.0	Projections of the quantities to be accepted and percentages disposed and recycled/recovered for the coming year .....	6
6.0	Summary Report on Emissions for the Reporting Period.....	6
7.0	Summary of Results and Interpretations of Environmental Monitoring.....	7
8.0	Resource and Energy Consumption Summary .....	8
9.0	Resource and Energy Consumption Summary .....	9
10.0	Proposed Development Works for the Forthcoming Year .....	9
11.0	Environmental Management System .....	9
12.0	Report Targets and Environmental Objectives and Targets for 2017. ....	10
13.0	Summary of Procedures Developed by the Licensee .....	11
14.0	Reported Incidents and Complaints .....	11
15.0	Report on Financial Provision at Cahersiveen Civic Amenity ,2016 .....	12
16.0	Management and Staffing Structure at the Facility December 2016.....	14
	Senior Executive Chemist.....	14
17.0	Programme of Public Information .....	15
	Appendix I : Waste Categorisation and Statistics 2016 .....	16
	Appendix II : Results of Foul and Surface Water Monitoring .....	18
	Appendix III – Results of Dust Monitoring 2016 .....	19
	Appendix IV – Results of Noise Monitoring .....	21
	Appendix V - AER/PRTR Return 2016.....	25

## **1.0 Introduction**

Kerry County Council operates a waste transfer and recycling facility in the townland of Inchamacteige, approximately 3 km from the town of Caherciveen, Co. Kerry. The site is accessed via a small access road branching off the county road L-7006.

The principal activity of the Transfer Station is the compaction of solid waste into 30 cubic metre closed containers for subsequent transfer and disposal at North Kerry Landfill in Muingnaminnane, Tralee. From the 12<sup>th</sup> July 2014, all waste from Caherciveen WTS was transferred to KWD Recycling for treatment/disposal as North Kerry Landfill ceased taking waste.

Other activities include the recycling or reclamation of inorganic materials including metals, glass, steel and aluminium cans, fluorescent tubes, household hazardous waste, cardboard, plastic bottles and newspapers.

This Annual Environment Report is prepared in accordance with Condition 2.8 and Schedule B of Waste Licence W0087-01 issued by the Environmental Protection Agency (EPA).

## **2.0 Reporting Period**

The reporting period for this Annual Environmental Report is 1<sup>st</sup> January – 31<sup>st</sup> December 2016.

## **3.0 Waste Activities Carried out at the Facility**

Waste disposal activities are carried out at Caherciveen Transfer Station in accordance with Part 1 of Waste Licence W0087-01 which outlines the waste disposal activities licensed in accordance with the Third Schedule of the Waste Management Act 1996. Licensed activities include:

**Class 12** Repackaging prior to submission to any activity referred to in a preceding paragraph of this Schedule.

**Class 13** Storage prior to submission to any activity referred to in a preceding paragraph of this Schedule, other than temporary storage, pending collection, on the premises where the waste concerned is produced.

Waste recovery activities carried out at Caherciveen Transfer Station are in accordance with Part 1 of Waste Licence W0087-01 which outlines the waste recovery activities licensed in accordance with the Fourth Schedule of the Waste Management Act 1996. Licensed activities include:

- Class 1** Solvent reclamation or regeneration.
  
- Class 2** Recycling or reclamation of organic substances which are not used as solvents (including composting and other biological transformation processes).
  
- Class 3** Recycling or reclamation of metals and metal compounds.
  
- Class 4** Recycling or reclamation of other inorganic materials.
  
- Class 13** Storage of waste intended for submission to any activity referred to in a preceding paragraph of this Schedule, other than temporary storage, pending collection, on the premises where such waste is produced.

#### 4.0 Quantity & Composition of Waste Received, Disposed & Recovered during 2016

Waste tonnage disposed of at Caherciveen Transfer Station during the reporting year (2016) decreased very slightly (8 tonnes) on the previous year (2015).

The weight of the waste accepted into Caherciveen Transfer Station Facility for disposal for the reporting period was 535.60 tonnes. This comprises of the following breakdown:

<i><b>Waste for Disposal</b></i>	<i><b>Tonnes 2012</b></i>	<i><b>Tonnes 2013</b></i>	<i><b>Tonnes 2014</b></i>	<i><b>Tonnes 2015</b></i>	<i><b>Tonnes 2016</b></i>
Household Waste	472.86	423.86	449.54	450.84	447.36
Commercial Waste	37.64	32.42	39.44	45.44	33.78
Road Sweeping/Street Cleaning	28.88	25.06	31.44	24.46	24.92
Graveyard Waste	1.98	1.98	0.98	1.48	0.76
Flytipping	16.40	20.86	25.92	21.34	28.78
<b>Total Tonnage of waste</b>	<b>557.76</b>	<b>504.18</b>	<b>547.32</b>	<b>543.56</b>	<b>535.60</b>

**Table 1: Waste Stream Breakdown for reporting Period 2016.**

Overall the quantities of waste sent for recycling in 2016 is slightly higher( 17.834 tonnes) than 2015.

Waste sent for recycling during the reporting period compared with previous years is outlined in Table 2.

<i><b>Waste for Recycling &amp; Recovery</b></i>	<i><b>Tonnes 2012</b></i>	<i><b>Tonnes 2013</b></i>	<i><b>Tonnes 2014</b></i>	<i><b>Tonnes 2015</b></i>	<i><b>Tonnes 2016</b></i>
Metals	20	26.44	27.98	33.40	48.16
Glass	23.48	28.634	33.672	38.398	31.024
Aluminium & Steel Cans	3.64	4.692	5.111	5.778	5.283
Batteries	0.03	0.44	1.22	1.071	0.884
Newspapers	52.88	51.04	50.87	54.42	49.02
Cardboard	10.26	13.92	23.36	25.74	22.96
Fluorescent Tubes	0.28	0.3	0.409	0.227	0
Plastic Bottles	11.58	15.72	21.58	20.92	22.16
Household Haz. Waste- Including Engine Oil	0.98	1.28	1.15	1.708	2.14
WEEE	61.65	68.23	56.506	49.502	65.603
Dry Recyclables	12.68	11.84	15.02	16.44	18.50
Textiles	1	1.1	1.32	1.06	0.76
<b>Total Tonnes</b>	<b>198.46</b>	<b>223.86</b>	<b>237.90</b>	<b>248.66</b>	<b>266.494</b>

**Table 2: Waste collected on site and recovered/recycled off site during 2016.**

Appendix I contains a breakdown of waste by classification collected/ repackaged on site during the reporting period.

## **5.0 Projections of the quantities to be accepted and percentages disposed and recycled/recovered for the coming year**

It is anticipated that the quantity of household waste disposed of at Cahersiveen should increase slightly and that the amount of other wastes (recycling wastes of various streams) should also increase slightly in 2017.

The proposed Waste Management (Collection Permit) Regulations 2016 – “pay-by-weight” – were due to come into effect in July 2016. The introduction of these Regulations has, however, been deferred.

If the “pay-by-weight” Regulations are introduced for Civic Amenity Sites / Recycling Centres, they will have an impact on the operation of Cahersiveen (indeed all of our Civic Amenity Sites / Waste Transfer Stations). We are awaiting clarification from the Department of Communications, Climate Action and Environment in relation to the “pay-by-weight” Regulations so that we can assess its impact on our services.

## **6.0 Summary Report on Emissions for the Reporting Period**

### **a) Foul Water Emissions**

The foul water discharge is monitored quarterly. The results are sent to the EPA and are also available at the Cahersiveen facility. A Puraflow Wastewater Treatment Unit is installed at the facility to treat all foul waters from the site.

### **b) Surface Water Emissions**

Surface water runoff from site roads and uncontaminated surfaces discharges via silt traps to the surface water drains.

### **c) Waste from Silt Traps and Interceptors**

The wastewater treatment system and drains were cleaned out and 4.18 tonnes of silt/sludge and wastewater were removed from the foul water treatment unit and disposed of at the Municipal Wastewater Treatment Plant.

## **7.0 Summary of Results and Interpretations of Environmental Monitoring**

### **a) Dust monitoring**

Dust monitoring was undertaken by Southern Scientific Services Ltd took place during 2016 .

There have been no issues with dust over the past number of years and no complaints were received in relation to dust at the facility during either 2014 or 2015. The results over the years have shown no significant nuisance from dust at the facility. The existing samples were located under trees and this had an impact in the results. It is proposed to trim back the foliage in 2017.

It is Kerry County Council's intension to seek a technical amendment in relation to the dust monitoring requirement of Waste Licence W0087 as past monitoring indicates that the site is not causing excessive dust to the surrounding environs.

The Annual Environmental Dust survey (2016) is attached in Appendix V.

### **b) Noise monitoring.**

A noise survey to EPA NG4 was undertaken by Southern Scientific Services Ltd on the 11<sup>th</sup> February 2015. Noise Levels recorded at Noise Sensitive Locations are determined to be below the emission limit value. The site is therefore compliant as regard noise levels.

There were no issues with noise during 2014, 2015 or 2016 and no complaints were received in relation to noise at the facility. The results over the years have shown that the facility caused no significant noise nuisance to neighbours.

The waste transfer station does not generate noise at night-time when the facility is closed.

It is Kerry County Council's intension to seek a technical amendment in relation to the noise monitoring requirement of Waste Licence W0087 as past monitoring indicates that the site it not causing excessive noise to the surrounding environs.

The Annual Environmental Noise survey (2016) is attached in Appendix V.

### **c) Monitoring of surface water.**

The surface water monitoring results are attached in Appendix II.

### **d) Foul Water**

The foul water discharge is monitored quarterly. The results are sent to the EPA and are also available at the Caherciveen facility. A Puraflow Wastewater Treatment Unit is installed at the facility to treat all foul waters from the site.

### **e) Kerry County Council's Laboratory Reporting**

A full report prepared by the Environmental Laboratory of KCC is not included in this document and will be forwarded separately as a licensee return to the Agency. Kerry County Council's lab is currently working towards ISO accreditation and as a result the senior executive chemist time has been taken up with this process. However, verified lab results are provided in Appendix II.

## **8.0 Resource and Energy Consumption Summary**

The following is the energy consumption for Caherciveen Transfer Station for the reporting period.

### **8.1 Diesel**

The diesel usage for Caherciveen Transfer Station for the reporting period 2016 was 2,896litres .The primary usage of diesel is for the waste compactor.

### **8.2 Electricity**

<b>Year</b>	<b>Cahersiveen average kWh/Day electricity consumption</b>
2016	18.50
2015	13.77
2014	16.39
2013	15.05
2012	13.66
2011	17



Power is required for the office computer and lighting, weighbridge, waste compactor, storage heating, water pumping, cardboard baler, CCTV and public lighting on the site.

### **8.3 Water**

Water supply is from a groundwater borehole on site. Water is mainly used on site for power washing yards, transfer station apron and hopper.

### **9.0 Resource and Energy Consumption Summary**

No development works were undertaken at the facility during the reporting period.

### **10.0 Proposed Development Works for the Forthcoming Year**

On the 31st August 2015 the Government introduced a new legislative framework to give effect to previously flagged commitments around the management of household waste by amending the Waste Management Act 1996 through the Environment (Miscellaneous Provisions) Act 2015. An introduction of 'Pay by Weight' charging for household kerbside waste collections is to be in place by 1st July 2016 however the introduction of 'Pay by Weight' to the various recycling /civic amenity sites has been deferred as such is yet to be put on statute.

It is anticipated that the quantity of household waste disposed of at Cahersiveen should increase slightly and that the amount of other wastes (recycling wastes of various streams) should also increase slightly in 2017.

If the "pay-by-weight" Regulations are introduced for Civic Amenity Sites / Recycling Centres, they will have an impact on the operation of Cahersiveen (indeed all of our Civic Amenity Sites / Waste Transfer Stations). We are awaiting clarification from the Department of Communications, Climate Action and Environment in relation to the "pay-by-weight" Regulations so that we can assess its impact on our services.

### **11.0 Environmental Management System**

There is an Environmental Management System( EMS) for the Cahersiveen Civic Amenity Site however it is likely that the proposed Household Waste Regulations once implemented for 'Transfer stations' will have an effect on the current system. The impact of the proposed regulations will be assessed and the EMS updated accordingly. The EPA will be notified of any changes to the Environmental Management System .

**12.0 Report Targets and Environmental Objectives and Targets for 2017.**

Target Area	2017 - Objective	2017 – Expected Outcome to Indicate achievement of target
Odour Management	Continue to ensure that the waste facility does not cause a nuisance in terms of odour through good housekeeping practices on site.	No odour complaints received .
Waste Storage Practices	Ensure good housekeeping on site so that waste is stored and collected in a timely fashion so as not to cause a nuisance on site or to the surrounding areas. It is our objective to construct/purchase secure sheds on site for the storage of WEEE and bailed cardboard.	No wind blown litter on site or on the public road adjacent to our site. No overflowing bins on site. Proper segregation of cardboard and WEEE on site which will also give additional security for WEEE material.
Incident Prevention	Continue with daily inspection and record keeping of emergency ‘STOP’ controls on site and look at Fire Preventative and Emergency Response Procedure for the site. Ensure that the Emergency Response Procedure ( ERP) has regard for the Agencies ‘ <i>Guidance Note on Fire Safety at Non-Hazardous Waste Transfer Stations</i> ’.	Staff will strive to ensure no incidents occur on site by being vigilant and act on notifiable incidents immediately or in so far as is reasonably practicable. Update the ERP to ensure that it has regard for the Guidance Note.
Infrastructure integrity and drainage.	An Integrity test was completed on the diesel bund in January 2016 and it is Kerry County Council’s intension to carry out the integrity test themselves every 3 years as per Schedule C of Waste Licence W87-01. Maintenance of the WWTP to be completed in 2017.	Compliance with Bund and tank integrity assessment. Contractor has been appointed to carry out maintenance of the WWTP and clear drains and cut back overgrowing trees in vicinity of WWTP.
Waste acceptance, Classification and records	Continue to record and document all waste types entering and leaving the site with monthly verifiable reports being produced.	Monthly reports on waste streams produced and verified.
Proposed Household Waste Regulations	It is expected that the proposed Household Waste Regulations will have an impact on the operation and site layout of the Cahersiveen Recycling/Waste Transfer Station. Once the regulations are brought into force for the ‘recycling/transfer station’, it is Kerry County Council’s intension to assess their impact and adapt the site where necessary to meet the new requirements.	Household Waste Regulations have yet to be put on the Statute Book .  We will strive to ensure full compliance with the proposed ‘pay by weight’ regulations.

### **13.0 Summary of Procedures Developed by the Licensee**

The following procedures were developed during the reporting period:

- Revised Operational Procedures for the site supervisor which included a daily inspection checklist of 'Emergency Stops' within the confines of the Transfer/ Recycling centre.
- Revised Safe Working Procedures for the site supervisor relating to the loading / unloading and reversing of vehicles within the confines of the Waste Transfer Station.

### **14.0 Reported Incidents and Complaints**

EPA inspector has visited the site on the 11<sup>th</sup> October 2016. A report was uploaded to EDEN in December 2016 outlining our proposals to address the issues. The Agency requested that our ERP must have regard to the '*Guidance note on Fire Safety at Non-hazardous waste Transfer Stations ( December 2013)*'. The ERP is currently been up dated to take on board the guidance note.

Kerry Co.Co. must devise a protocol for prompt reporting of any exceedances and to assess trigger levels/paramaters for off site surface water sampling locations.

The EPA has also requested that the BOD and suspended solids are to be tested once the WWTP has been serviced.

## 15.0 Report on Financial Provision at Cahersiveen Civic Amenity ,2016

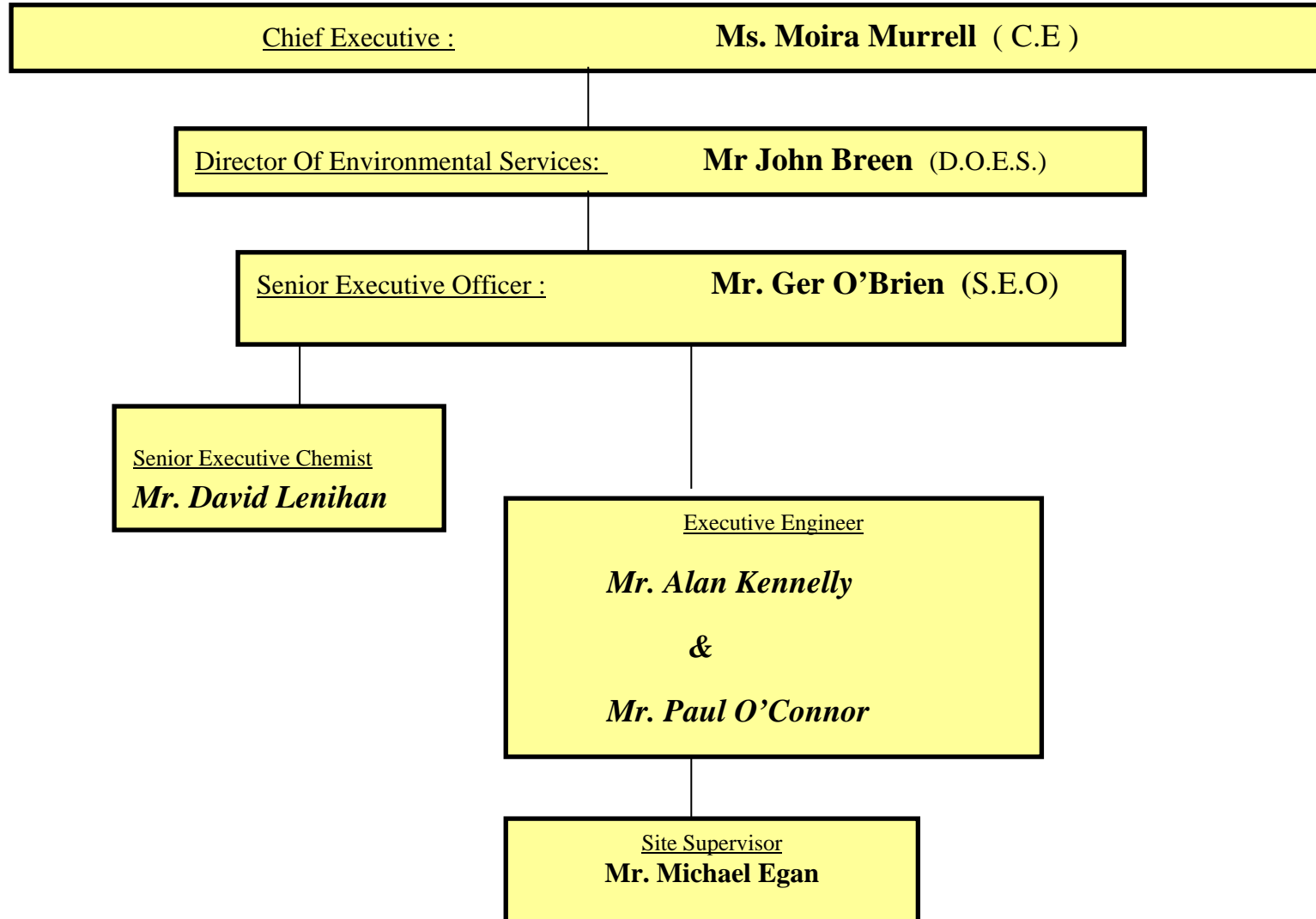
### Statement of Costs for Waste Operations - Caherciveen 2016

Accelem	Account Element	Euro €
60030	Wages	16,523
60040	Salaries	19,272
60100	ER PRSI	3,807
60200	Overtime	2,695
60500	Annual Leave	1,819
60510	Bank Holiday Leave	308
60600	Travel/Subsistence	1,736
65500	Minor Contracts- Trade Services & other works	56,696
65965	Transfer to/from Cap/Rev (Exp)	0
66500	Non-Capital Equip Purchase - Fire Services	3
67500	Non-Capital Equip Purchase - Computers	287
68500	Non-Capital Equip Purchase - Other	777
69000	Hire (Ext) - Plant/Transport/Machinery & Equipment	138
69200	Repairs & Maint - Plant	0
69260	Repairs & Maint - Other Equip	1,285
69400	Transfers from Machinery Yard	9,695
69600	Other Vehicle Expenses	105
70000	Materials	476
70990	Issues from Stores	2,610
70991	Returns to Stores	-251
71000	Insurance	323
73400	Staff Travelling & Subsistence Expenses	1,244
76000	Communication Expenses	284
76100	Postage	49
77100	Courier	0
77200	Security - Property	512
78000	Training	845
79900	Consultancy/Professional Fees and Expenses	0
80000	Advertising	37
81000	Printing & Office Consumables	0
82100	Statutory Contributions to Other Bodies	7,475
85100	Rates & Other LA Charges	198
86000	Energy / Utilities	2,796
	<b>Total</b>	<b>131,744</b>

**Statement of Costs for Recycling Operations - Caherciveen 2016**

<b>Accelem</b>	<b>Account Element</b>	<b>Euro €</b>
60030	Wages	17,752
60040	Salaries	12,890
60100	ER PRSI	3,404
60200	Overtime	2,572
60400	Sick Pay	268
60500	Annual Leave	2,435
60510	Bank Holiday Leave	485
60600	Travel/Subsistence	1,873
65500	Minor Contracts- Trade Services & other works	5,820
66500	Non-Capital Equip Purchase - Fire Services	10
69000	Hire (Ext) - Plant/Transport/Machinery & Equipment	50
69200	Repairs & Maint - Plant	372
69260	Repairs & Maint - Other Equip	192
69400	Transfers from Machinery Yard	0
70000	Materials	1,881
70990	Issues from Stores	7,239
73400	Staff Travelling & Subsistence Expenses	1,080
76000	Communication Expenses	267
77100	Courier	13
77200	Security - Property	1,356
78000	Training	0
80000	Advertising	37
82100	Statutory Contributions to Other Bodies	0
85100	Rates & Other LA Charges	0
86000	Energy / Utilities	188
	<b>Total</b>	<b>60,184</b>

**16.0 Management and Staffing Structure at the Facility December 2016**



## **17.0 Programme of Public Information**

The following files are available for inspection on site by members of the public:

- AER of previous reporting years
- All correspondence with the Agency
- Surface Water Monitoring Results
- Incident/Complaints Register
- Tonnage of waste accepted on site
- Characterisation of waste accepted on site
- Operational Procedure Manual
- Waste Acceptance Procedure
- Information on Recycling Initiatives e.g. leaflets.
- Environmental Management System.

## Appendix I : Waste Categorisation and Statistics 2016

### Caherciveen Transfer Station Residual Waste - Tonnage Period 01/01/16 to 31/12/2016

Month	Levied Waste						Non Levied Waste					TOTALS		
	Public Car Household	* Non weighed waste inclusive of tickets	Account Holders VAT Inclusive	Account Holder VAT Exclusive (Valentia Island Industries)	KCC Levied Waste	Total Levied Waste	KCC Road Sweeping/Street Cleaning	Graveyard Waste	KCC Clean Ups / Flipping	Environment Flytipping / Clean Ups - Invs Raised to Environment	Total Non-levied	Total of Waste Over Weighbridge	Total Waste Out of Facility - Including Ticket Waste	No. Loads out of TS
January 2016	20.04	15.86	1.38	0.56	1.12	38.96	2.5	0.00	0.48	0.70	3.68	26.78	42.64	4
January 2015	16.42	13.12	1.24	0.00	1.58	32.36	2.38	0.00	0.46	0.1	2.94	22.18	35.30	3
February 2016	15.68	12.34	0.76	0.68	0.78	30.24	1.28	0.00	1.00	0.84	3.12	21.02	33.36	3
February 2015	19.10	19.88	0.72	1.06	0.46	41.22	1.92	0.30	0	0.78	3	24.34	44.22	4
March 2016	18.6	15.42	1.28	0.6	0.3	36.20	0.9	0.24	0.68	0.92	2.74	23.52	38.94	4
March 2015	21.08	8.12	2.14	0.32	0.18	31.82	1.68	0.12	0.48	0.38	2.64	26.34	34.46	3
April 2016	17.42	19.68	1.4	1.12	2.52	42.14	1.16	0	0.3	3.22	4.68	27.14	46.82	5
April 2015	23.62	24.8	1.38	0.44	0.62	50.86	1.68	0.00	0.54	1.56	3.78	29.84	54.64	5
May 2016	21.04	3.66	1.26	0.56	0.00	26.52	0.96	0.00	0.86	0.44	2.26	25.12	28.78	3
May 2015	21.66	5.94	1.08	0.78	0	29.44	1.94	0.22	0.38	1.9	4.44	27.94	33.88	3
June 2016	27.72	18.4	1.34	0	0.18	47.64	1.72	0.26	1.78	1.24	5	34.24	52.64	5
June 2015	24.02	12.5	1.94	0.68	0	39.14	1.54	0.12	1.24	0.68	3.58	30.22	42.72	4
July 2016	33.62	15.32	3.12	0.66	0.24	52.96	2.4	0	3.66	0.82	6.88	44.52	59.84	6
July 2015	30.18	18.94	2.74	3.12	0.18	55.18	0.84	0	2.22	0.88	3.94	40.16	59.10	5
August 2016	31.66	23.06	2.9	0.60	0	58.22	4.84	0.26	3.7	0.7	9.50	44.66	67.72	7
August 2015	27.1	29.2	5.6	0	0	61.90	5.14	0	2.62	1.28	9.04	41.74	70.94	6
September 2016	24.72	17.88	2.14	1.94	0.62	47.30	1.72	0	1.94	0.54	4.2	33.62	51.50	5
September 2015	21.08	10.2	2.66	0	0.16	34.08	0	0	2.48	1.04	3.52	27.40	37.60	4
October 2016	19.08	16.72	0.00	0.74	0.4	36.94	3.56	0	0.34	0.98	4.88	25.10	41.82	4
October 2015	17.54	15.38	1.36	1.44	3.44	39.16	2	0.04	0.36	0.6	3	26.78	42.16	4
November 2016	20.28	12.46	2.60	0	0.16	35.50	2.48	0	0.96	0.64	4.08	27.12	39.58	4
November 2015	18.5	14.78	4.24	0	3	40.52	2.84	0	0	0.84	3.68	29.42	44.20	4
December 2016	21.34	5.36	1.24	0.54	0.04	28.52	1.4	0	0.84	1.2	3.44	26.60	31.96	3
December 2015	19.34	18.38	0.46	0.58	1.86	40.62	2.5	0.68	0	0.54	3.72	25.96	44.34	4
<b>Total Tonnage 2016</b>	<b>271.20</b>	<b>176.16</b>	<b>19.42</b>	<b>8.00</b>	<b>6.36</b>	<b>481.14</b>	<b>24.92</b>	<b>0.76</b>	<b>16.54</b>	<b>12.24</b>	<b>54.46</b>	<b>359.44</b>	<b>535.60</b>	<b>53</b>
Total Tonnage 2016	259.60	191.24	25.54	8.42	11.48	496.28	24.46	1.48	10.78	10.56	47.28	352.32	543.56	49
Total Account Holders 2016			27.42											
<b>Grand Total</b>			<b>481.14</b>					<b>54.46</b>						

KCC Levied Waste: Housing 0.04

KCC Street Cleaning: Caherciveen Area Office; 1.4

KCC Flytipping: Caherciveen Area Office 0.84;

Environment Flytipping: Caherciveen Tidy up 0.64, Precleared Flytipping Caherciveen Tidy Towns 0.80, Bottle Banks 0.06

Account Holders With Vat; Ballinskelligs Vet Products 0.60, Coroonan's Furniture 0.06, IRD Follimore Kells Ltd 0.36, Comhairle Ghaeilcoit Uilbh 0.22

Account Holders With of Vat; Valentia Island Industries 0.64

All figures checked and verified by \_\_\_\_\_

Date \_\_\_\_\_



Household Waste Deposited at Caherciveen Civic Amenity Sites in 2016														
		Jan	Feb	Mar	Apr	May	Jun	Jul	Aug	Sep	Oct	Nov	Dec	Total
Material type	Suggested EWC codes													
Mixed residual waste (Trans Waste out of facility)	20 03 01	42.64	33.36	38.94	46.82	28.78	52.64	59.84	67.72	51.50	41.82	39.58	31.96	535.60
Organic waste (food and garden)														0.00
food (compost waste Milltown TS)	20 01 08													0.00
garden	20 02 01													0.00
Mixed dry recyclables (Ecosence Bags)	15 01 06	2.58	1.26	1.24	1.26	1.88	0.68	2.38	1.86	1.48	1.56	1.66	0.66	18.50
Cardboard, newspaper and other paper														0.00
cardboard packaging	15 01 01	1.46	1.92	3.66	1.56	1.26	2.94	1.94	1.80	2.18	1.86	1.14	1.24	22.96
cardboard non-packaging	20 01 01													0.00
paper packaging	15 01 01													0.00
paper non-packaging	20 01 01													0.00
newspaper and magazines	20 01 01	3.46	4.16	5.02	3.34	3.86	4.32	4.74	3.48	5.00	4.22	4.06	3.36	49.02
Glass														0.00
glass packaging (bottles)	15 01 07	2.7570	2.4960	2.2310	0.8250	3.1820	2.1570	4.2700	2.4060	4.1180	2.1660	1.8460	2.5700	31.0240
glass non-packaging (flat glass)	20 01 02													0.0000
Metals														0.0000
aluminium cans (packaging)	15 01 04	0.1090	0.1290	0.1020	0.0480	0.1150	0.1070	0.1740	0.0380	0.1210	0.0920	0.0850	0.1560	1.2760
steel cans (packaging)	15 01 04	0.3740	0.4780	0.3670	0.1450	0.3160	0.4290	0.4480	0.1550	0.3130	0.3470	0.1470	0.4880	4.0070
other metals (scrap metals)	20 01 40	3.48	2.34	2.36	3.76	4.20	3.14	3.74	9.86	0.00	7.48	3.68	4.12	48.16
Plastic														0.00
plastic packaging (bottles)	15 01 02	2.50	1.42	1.82	1.40	1.84	1.88	1.70	3.40	1.32	1.26	1.38	2.24	22.16
plastic non-packaging	20 01 39													0.00
polystyrene														0.00
Composite packaging (e.g. tetrapaks)	15 01 05													0.00
Textiles														0.00
textiles, packaging	15 01 09													0.00
textiles, non-packaging (clothes)	20 01 11	0.00	0.08	0.00	0.10	0.00	0.18	0.10	0.00	0.16	0.00	0.14	0.00	0.76
Wood														0.00
wood packaging	15 01 03													0.00
wood non-packaging	20 01 38													0.00
mixed, uncontaminated wood packaging and non-packaging (collected at An Dainqean)	15 01 03; 20 01 38													0.00
wood, treated, hazardous	20 01 37*													0.00
Batteries	Portable								0.00					0.00
lead acid batteries and accumulators (Car Batteries)	16 06 01*	0.000	0.00	0.000	0.00	0.00	0.00	0.00	0.000	0.00	0.00	0.00	0.00	0.000
Ni-Cd batteries and accumulators	16 06 02*	0.0000	0.0000	0.0000	0.0000	0.0000	0.0000	0.0000	0.8840	0.0000	0.0000	0.0000	0.0000	0.8840
Other (e.g. alkaline) batteries and accumulators (Small Batteries)	16 06 04													0.00
Household Hazardous Waste														0.00
Waste mineral oils (Engine Oil)	13.02 08	0.000	0.00	0.00	0.00	0.00	0.00	0.00	0.00	0.00	0.00	1.76	0.00	1.760
Oil filters (vehicles)	13 08 99	0.00	0.00	0.00	0.00	0.00	0.00	0.00	0.00	0.00	0.00	0.00	0.00	0.00
Oil containers (mineral oil) - plastic + metal	13 08 99	0.00	0.00	0.00	0.00	0.00	0.00	0.00	0.00	0.00	0.00	0.00	0.00	0.00
Waste cooking or vegetable oils (Danco)	20 01 25	0.00	0.00	0.00	0.00	0.00	0.00	0.00	0.00	0.00	0.00	0.20	0.00	0.20
Waste paint and varnish (including containers)	20 01 27	0.00	0.16	0.00	0.00	0.00	0.00	0.00	0.00	0.00	0.00	0.00	0.00	0.16
Aerosols	14 06 01	0.00	0.02	0.00	0.00	0.00	0.00	0.00	0.00	0.00	0.00	0.00	0.00	0.02
WEEE collected by compliance schemes														0.00
CRT	20 01 36	1.191	1.373	0.483	0.938	1.060	1.371	0.965	1.671	1.289	0.555	1.148	0.000	12.049
SDA - Small Domestic Appliances	20 01 36	1.590	3.030	0.460	2.283	1.756	10.520	2.049	2.470	2.063	2.029	2.016	0.000	30.266
LDA - Large Domestic Appliances	20 01 36	0.820	0.700	0.467	1.230	0.720	3.736	1.380	0.920	1.680	1.420	1.560	1.678	16.311
Cold	20 01 36	0.430	0.000	0.527	0.357	0.606	1.716	0.430	0.931	0.000	1.000	0.300	0.680	6.977
WEEE taken off-site by charities (e.g. mobile phones)	20 01 35													0.00
Dry Recyclables Customer Caherciveen CA	20 03 01													0.00
Flourescent Tubes	20 01 11	0.00	0.00	0.00	0.00	0.00	0.00	0.00	0.00	0.00	0.00	0.00	0.00	0.00
Foul Water Septic Tanks Caherciveen CA	20 03 04												4.18	4.18
<b>Total Recycling less Mixed Municipal Waste &amp; Foul Water</b>		<b>20.75</b>	<b>19.57</b>	<b>18.74</b>	<b>17.25</b>	<b>20.80</b>	<b>33.18</b>	<b>24.32</b>	<b>29.88</b>	<b>19.72</b>	<b>23.99</b>	<b>21.12</b>	<b>17.19</b>	<b>266.494</b>
Figures from Dillons Repak as breakdown not available from TS.														

**Appendix II : Results of Foul and Surface Water Monitoring**



# Accreditation Certificate

## Kerry County Council

Áras an Chontae, Rathass, Tralee, Co. Kerry

### Testing Laboratory

Registration number: 340T

is accredited by the Irish National Accreditation Board (INAB) to undertake testing as detailed in the Schedule bearing the Registration Number detailed above, in compliance with the International Standard ISO/IEC 17025:2005 2<sup>nd</sup> Edition

*“General Requirements for the Competence of Testing and Calibration Laboratories”*

*(This Certificate must be read in conjunction with the Annexed Schedule of Accreditation)*

---

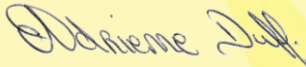
Date of award of accreditation: 08:12:2015

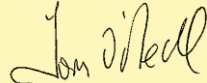
Date of last renewal of accreditation: n/a

Expiry date of this certificate of accreditation: 08:12:2020

---

This Accreditation shall remain in force until further notice subject to continuing compliance with INAB accreditation criteria, ISO/IEC 17025 and any further requirements specified by the Irish National Accreditation Board.

  
Manager: \_\_\_\_\_  
Dr Adrienne Duff

  
Chairperson: \_\_\_\_\_  
Mr Tom O'Neill

Issued on 08 December 2015

Organisations are subject to annual surveillance and are re-assessed every five years. The renewal date on this Certificate confirms the latest date of renewal of accreditation. To confirm the validity of this Certificate, please contact the Irish National Accreditation Board.

INAB is a signatory of the European co-operation for Accreditation (EA) Multilateral Agreement (MLA) and the International Laboratory Accreditation Cooperation (ILAC) Mutual Recognition Arrangement, for Testing.

# Schedule of Accreditation



(Annex to Accreditation Certificate)

Permanent Laboratory:

Category A

## KERRY COUNTY COUNCIL LABORATORY

### Chemical and Biological Testing Laboratory

**Initial Registration Date :** 08-December-2015

**Postal Address:** Áras an Chontae,  
*(Address of other locations as they apply)* Rathass,  
Tralee,  
Co. Kerry.

**Telephone:** +353 (66) 7183592

**Fax:** +353 (66) 7161819

**E-mail:** dlenihan@kerrycoco.ie

**Contact Name:** David Lenihan

**Facilities:** Normally not available for Public testing

# Schedule of Accreditation



Permanent Laboratory:  
Category A

THE IRISH NATIONAL ACCREDITATION BOARD (INAB) is the Irish body for the accreditation of organisations including laboratories.

Laboratory accreditation is available to testing and calibration facilities operated by manufacturing organisations, government departments, educational institutions and commercial testing/calibration services. Indeed, any organisation involved in testing, measurement or calibration in any area of technology can seek accreditation for the work it is undertaking.

Each accredited laboratory has been assessed by skilled specialist assessors and found to meet criteria which are in compliance with ISO/IEC 17025 or ISO/IEC 15189 (medical laboratories). Frequent audits, together with periodic inter-laboratory test programmes, ensure that these standards of operation are maintained.

## Testing and Calibration Categories:

- Category A:** Permanent laboratory calibration and testing where the laboratory is erected on a fixed location for a period expected to be greater than three years.
- Category B:** Site calibration and testing that is performed by staff sent out on site by a permanent laboratory that is accredited by the Irish National Accreditation Board.
- Category C:** Site calibration and testing that is performed in a site/mobile laboratory or by staff sent out by such a laboratory, the operation of which is the responsibility of a permanent laboratory accredited by the Irish National Accreditation Board.
- Category D:** Site calibration and testing that is performed on site by individuals and organisations that do not have a permanent calibration/testing laboratory. Testing may be performed using
- (a) portable test equipment
  - (b) a site laboratory
  - (c) a mobile laboratory or
  - (d) equipment from a mobile or site laboratory

## Standard Specification or Test Procedure Used:

The standard specification or test procedure that is accredited is the issue that is current on the date of the most recent visit, unless otherwise stated.

## Glossary of Terms

### Facilities:

- Public calibration/testing service:** Commercial operations which actively seek work from others.
- Conditionally available for public calibration/testing:** Established for another primary purpose but, more commonly than not, is available for outside work.
- Normally not available for public calibration/testing:** Unavailable for public calibration/testing more often than not.

Laboratory users wishing to obtain assurance that calibration or test results are reliable and carried out to the Irish National Accreditation Board criteria should insist on receiving an accredited calibration certificate or test report. Users should contact the laboratory directly to ensure that this scope of accreditation is current. INAB will, on request, verify the status and scope.

# Scope of Accreditation



## Kerry County Council Laboratory Chemical Testing Laboratory

Permanent Laboratory:  
Category A

INAB Classification number (P9) Materials/products tested	Type of test/properties measured Range of measurement	Standard specifications Equipment/techniques used
766 Waters		Documented in-house methods based on AQKM based on HMSO-1981
.01 Waters for potable and domestic purposes	Ammonia 0.05-1 mg/L as N	541-P-004
	Chloride 5-80 mg/L Cl	541-P-006
.99 Other waters - surface waters	Total Oxidised Nitrogen 0.5-10 mg/L as N	541-P-016
	Sulphate 5-100 mg/L SO4	541-P-024
	Nitrite 0.05 - 1 mg/L as N	541-P-018
	pH 4-10	Documented in-house method based on Standard Methods for the Examination of Water and Wastewater 22nd Edition 2012 4500-H 541-P-020
	Conductivity 15-2500 µS/cm	Documented in-house method based on Standard Methods for the Examination of Water and Wastewater 22nd Edition 2012 2510-B 541-P-011

# Scope of Accreditation



## Kerry County Council Laboratory Chemical Testing Laboratory

Permanent Laboratory:  
Category A

INAB Classification number (P9) Materials/products tested	Type of test/properties measured Range of measurement	Standard specifications Equipment/techniques used
<b>766 Waters</b>		
.01 Waters for potable and domestic purposes	Turbidity by nephelometric method 0.25-10 NTU	Documented in-house method based on Standard Methods for the Examination of Water and Wastewater 22nd Edition 2012 2130-B 541-P-029
	Fluoride by Ion Selective Electrode 0.1-2. mg/L F	Documented in-house method based on Standard Methods for the Examination of Water and Wastewater 22nd Edition 2012 4500-F 541-P-012
.01 Waters for potable and domestic purposes	Colour 5-100 Hazen units	Hach Method 8025 541-P-010
.99 Other waters - surface waters		
	Major Ions by ICP-MS  Calcium 1-100mg/L Ca	Documented in-house method based on USEPA Method 200.8 (1999) 541-P-038



# Scope of Accreditation



## Kerry County Council Laboratory Chemical Testing Laboratory

Permanent Laboratory:  
Category A

INAB Classification number (P9) Materials/products tested	Type of test/properties measured Range of measurement	Standard specifications Equipment/techniques used
766 Waters	Metals by ICP-MS	Documented in-house method based on USEPA Method 200.8 (1999) 541-P-030
.01 Waters for potable and domestic purposes	Arsenic 1-500µg/L As Chromium 1-500µg/L Cr Iron 20-1000µg/L Fe	
.99 Other waters - surface waters	Manganese 1-500µg/L Mn Nickel 10-500µg/L Ni Cadmium 1-500µg/L Cd Lead 1-300µg/L Pb Selenium 1-500µg/L Se Copper 0.002-1.0mg/L Cu	

# Scope of Accreditation



## Kerry County Council Laboratory Biological Testing Laboratory

Permanent Laboratory:  
Category A

INAB Classification number (P9) Materials/products tested	Type of test/properties measured Range of measurement	Standard specifications Equipment/techniques used
<b>870</b> Waters, including effluents  .11    Bacteriological condition of potable waters	Enumeration of Coliforms & E.coli by Idexx ( Colilert 18) Quanti Tray	Documented in-house method based on  MPN by IDEXX Colilert 18 ISO standard 9308-2:2012 541-P-031

## Appendix III – Results of Dust Monitoring 2016



OUR REF: RP 2016 | KERRY COUNTY COUNCIL – CAHERCIVEEN CIVIC AMENITY SITE | 36337 C (Rev 01 – 13.02.17)

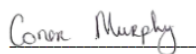
PAGE 01 \ 02

### ANALYSIS REPORT

<b>CUSTOMER:</b>	KERRY COUNTY COUNCIL CAHERCIVEEN CIVIC AMENITY SITE	<b>SAMPLE TYPE:</b>	BERGERHOFF DEPOSIT GAUGE
<b>ADDRESS:</b>	-	<b>CONDITION OF SAMPLE ON RECEIPT:</b>	Satisfactory
<b>REPORT TO:</b>	PAUL O CONNOR	<b>DATE SAMPLED:</b>	20 September – 18 October 2016
<b>SAMPLED BY:</b>	Danny O Leary, Southern Scientific Services Ltd	<b>DATE RECEIVED:</b>	18 October 2016
<b>SAMPLING PT:</b>	CAHERCIVEEN CIVIC AMENITY SITE	<b>DATE ANALYSED:</b>	20 October – 02 November 2016
<b>PROPOSAL REF:</b>	-	<b>DATE REPORTED:</b>	07 November 2016
		<b>WORK NO:</b>	36337 C   16P-063

### TABLE OF RESULTS – DUST ANALYSIS (F)

Method:	Lab Ref:	Your Ref:	TOTAL PARTICULATES mg / m <sup>3</sup> / day	INORGANIC PARTICULATES mg / m <sup>3</sup> / day	Limit mg / m <sup>3</sup> / day <i>(Supplied by Customer)</i>
SCP 039	C16-Oct 980	ST 1	49	20	350
SCP 039	C16-Oct 981	ST 2	399	314	350
SCP 039	C16-Oct 982	ST 3	503	72	350

  
 Dr Conor Murphy  
 Deputy Chemistry Laboratory Manager

#### Index to symbols used:

*	Analysis is not INAB accredited.
(F)	Analysis carried out at our Farranfore Laboratory.

- The results relate only to the items tested.
- Opinions and interpretations expressed herein are outside the scope of INAB accreditation.
- The analysis report shall not be reproduced except in full without written approval of the laboratory.
- Sampling time is outside the scope of this test. This time is used to calculate the results.

COMMENT

ST 2 – C16-Oct 981

This monitoring point is located under trees. The collector gauge contained water and a large amount of vegetation, debris and brown particulates. The dried dish contained a considerable amount of brown particulates. The ashed dish contained a considerable amount of grey particulates and algal residue. The ashed residue underwent effervescence on addition of acid indicating the presence of carbonate in the residue.

COMMENT

ST 3 – C16-Oct 982

This monitoring point is located near the main office where there is a lot of traffic movement. The collector gauge contained water and some vegetation, and a large amount of brown particulates and algal residue. The dried dish contained a considerable amount of brown particulates and algal residue. The ashed dish contained a considerable amount of grey particulates and algal residue. The ashed residue underwent no effervescence on addition of acid indicating the absence of carbonate in the residue.

#### **Appendix IV – Results of Noise Monitoring**

It is concluded that activities at the waste transfer station are not adversely impacting on the noise environment at the nearest noise sensitive location, which is quite distant from the facility.

The waste transfer station does not generate noise at night time when the facility is closed.



**southern scientific  
services ltd**

**ENVIRONMENTAL NOISE SURVEY 2016**

**CAHERCIVEEN WASTE TRANSFER STATION**

**INCHAMACTEIGE**

**CAHERCIVEEN**

**CO. KERRY**

**W0087-01**

<b>Requested By:</b>	P. O' Connor Kerry County Council
<b>Prepared By:</b>	Sinead Fagan Southern Scientific Services Ltd
<b>Date Reported:</b>	23 <sup>rd</sup> December 2016
<b>Our Reference:</b>	15P 150

<b>Issue Date</b>	<b>Revision</b>	<b>Checked By</b>	<b>Comment</b>
23/12/16	00	P. Byrne (B.Sc; Ph.D) Cert. Env. Noise (IOA)	Final report

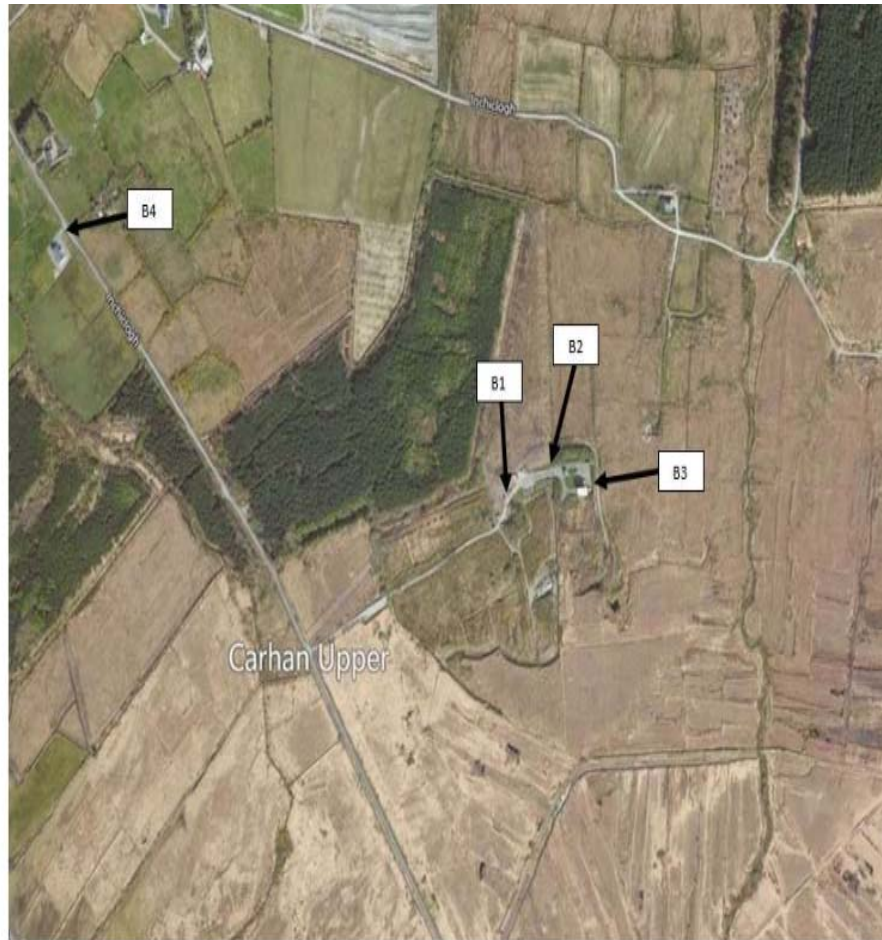


Figure 1: Map showing monitoring positions B1 – B4

### 3.2 Equipment

Instrument: Brüel & Kjaer (Type 2250-L with Type 4950 microphone).

Instrument Serial No: 2654679

Instrument Last Calibrated: 16/11/2015

This instrument conforms to the following standards:

IEC 61672-1, Class 1

IEC 61260 1/3 Oct. Band Class 0

IEC 60651, Type 1

IEC 60804, Type 1

Sound Calibrator: Type 4231

Sound Calibrator Serial No.: 3001116

Sound Calibrator Calibration Date: 09/11/2015

## 5. Discussion & Conclusion

The  $L_{AF10}$  &  $L_{AF90}$  noise parameters along with the audible noise sources recorded during the survey assist in providing an understanding of the sources and nature of the noise in the area. The  $L_{A10}$  is the A-weighted sound level, which is exceeded for 10% of the measurement interval and is usually used to quantify traffic noise or other short duration/passing events. In contrast, the  $L_{A90}$  is the A-weighted sound level that is exceeded for 90% of the measurement interval and is usually used to quantify background noise. The  $L_{Aeq}$  is the equivalent continuous sound level during a measurement interval, effectively representing the average A-weighted noise level. The site Waste Licence specifies a day-time limit of 55dB (A)  $L_{Aeq(30\text{ min})}$  at the nearest noise sensitive location. A night-time survey was not undertaken as the transfer station does not operate during night-time hours and there is no source of noise within the site during this period.

The noise survey results demonstrate that the 55dB (A)  $L_{Aeq(30\text{ min})}$  limit was achieved at B1, B2, B3, and B4 on some occasions but not at all times. Exceedences of 55dB (A)  $L_{Aeq(30\text{ min})}$  at the on-site monitoring locations (B1-B3) were mainly associated with on-site traffic, and in particular when vehicles were left running close to the noise monitor. Exceedences at the off-site location were mainly attributable to the adjacent road traffic. Activities at the waste transfer station were not audible at this location. The 1/3 Octave Frequency Spectra show that there was no prominent tonal noise present when assessed following the criteria in Annex D of ISO 1996 (Part 2), 2007, with the exception of location B3 on March 24<sup>th</sup> at 315Hz. The source of this tone is not known and tonal noise was not found during subsequent surveys at this location.

It is concluded that activities at the waste transfer station are not adversely impacting on the noise environment at the nearest noise sensitive location, which is quite distant from the facility. The waste transfer station does not generate noise at night-time when the facility is closed.



**Appendix V - AER/PRTR Return 2016**



Environmental Protection Agency

[Guidance to completing the PRTR workbook](#)

# PRTR Returns Workbook

Version 1.1.19

<b>REFERENCE YEAR</b>	2016
-----------------------	------

## 1. FACILITY IDENTIFICATION

Parent Company Name	Kerry County Council
Facility Name	Caherciveen Transfer Station
PRTR Identification Number	W0087
Licence Number	W0087-01

Classes of Activity

No.	class_name
-	Refer to PRTR class activities below

Address 1	Inchamacteige
Address 2	Caherciveen
Address 3	
Address 4	
Country	Kerry
Country	Ireland
Coordinates of Location	-10.182 51.9418
River Basin District	IESW
NACE Code	3821
Main Economic Activity	Treatment and disposal of non-hazardous waste
<b>AER Returns Contact Name</b>	Alan Kennelly
<b>AER Returns Contact Email Address</b>	alan.kennelly@kerrycoco.ie
<b>AER Returns Contact Position</b>	EE
<b>AER Returns Contact Telephone Number</b>	0667162014
<b>AER Returns Contact Mobile Phone Number</b>	0879088205
<b>AER Returns Contact Fax Number</b>	0667162001
<b>Production Volume</b>	0.0
<b>Production Volume Units</b>	
<b>Number of Installations</b>	0
<b>Number of Operating Hours in Year</b>	0
<b>Number of Employees</b>	1
<b>User Feedback/Comments</b>	Waste cooking oil (EWC 20 01 25) - 0.2 Tonnes collected Waste paint & varnish (EWC 20 01 27) - 0.16 tonnes collected Waste aerosols (EWC 14 06 01) - 0.02 tonnes collected
<b>Web Address</b>	

## 2. PRTR CLASS ACTIVITIES

Activity Number	Activity Name
50.1	General
50.1	General

## 3. SOLVENTS REGULATIONS (S.I. No. 543 of 2002)

Is it applicable?	
Have you been granted an exemption?	
If applicable which activity class applies (as per Schedule 2 of the regulations)?	
Is the reduction scheme compliance route being used?	

## 4. WASTE IMPORTED/ACCEPTED ONTO SITE

[Guidance on waste imported/accepted onto site](#)

Do you import/accept waste onto your site for on-site treatment (either recovery or disposal activities)?	
---	--

This question is only applicable if you are an IPPC or Quarry site

4.1 RELEASES TO AIR

[Link to previous years emissions data](#)

| PRTR# : W0087 | Facility Name : Caherciveen Transfer Station | Filename : W0087\_2016.xls | Return Year : 2016 |

29/03/2017 15:57

**SECTION A : SECTOR SPECIFIC PRTR POLLUTANTS**

RELEASERS TO AIR		METHOD			QUANTITY		
POLLUTANT		Method Used			Emission Point 1		
No. Annex II	Name	M/C/E	Method Code	Designation or Description	T (Total) KG/Year	A (Accidental) KG/Year	F (Fugitive) KG/Year
					0.0	0.0	0.0

\* Select a row by double-clicking on the Pollutant Name (Column B) then click the delete button

**SECTION B : REMAINING PRTR POLLUTANTS**

RELEASERS TO AIR		METHOD			QUANTITY		
POLLUTANT		Method Used			Emission Point 1		
No. Annex II	Name	M/C/E	Method Code	Designation or Description	T (Total) KG/Year	A (Accidental) KG/Year	F (Fugitive) KG/Year
					0.0	0.0	0.0

\* Select a row by double-clicking on the Pollutant Name (Column B) then click the delete button

**SECTION C : REMAINING POLLUTANT EMISSIONS (As required in your Licence)**

RELEASERS TO AIR		METHOD			QUANTITY					
POLLUTANT		Method Used			Emission Point 1					
Pollutant No.	Name	M/C/E	Method Code	Designation or Description	Emission Point 1	Emission Point 2	Emission Point 3	T (Total) KG/Year	A (Accidental) KG/Year	F (Fugitive) KG/Year
210	Dust	M	ALT	Bergerhoff Instruments	31.0	252.0	318.0	601.0	0.0	0.0

\* Select a row by double-clicking on the Pollutant Name (Column B) then click the delete button

**Additional Data Requested from Landfill operators**

For the purposes of the National Inventory on Greenhouse Gases, landfill operators are requested to provide summary data on landfill gas (Methane) flared or utilised on their facilities to accompany the figures for total methane generated. Operators should only report their Net methane (CH4) emission to the environment under T (Total) KG/yr for Section A: Sector specific PRTR pollutants above. Please complete the table below:

Landfill: Caherciveen Transfer Station

Please enter summary data on the quantities of methane flared and / or utilised

	T (Total) kg/Year	M/C/E	Method Used		Facility Total Capacity m3 per hour
			Method Code	Designation or Description	
Total estimated methane generation (as per site model)	0.0				N/A
Methane flared	0.0				0.0 (Total Flaring Capacity)
Methane utilised in engine/s	0.0				0.0 (Total Utilising Capacity)
Net methane emission (as reported in Section A above)	0.0				N/A

5. ONSITE TREATMENT & OFFSITE TRANSFERS OF WASTE

| PRTR# : W0087 | Facility Name : Caheriveen Transfer Station | Filename : W0087\_2016.xls | Return Year : 2016 |

29/03/2017 15:57

Please enter all quantities on this sheet in Tonnes

3

Transfer Destination	European Waste Code	Hazardous	Quantity (Tonnes per Year)	Description of Waste	Waste Treatment Operation	Method Used		Location of Treatment	Haz Waste : Name and Licence/Permit No of Next Destination Facility Non Haz Waste: Name and Licence/Permit No of Recover/Disposer	Haz Waste : Address of Next Destination Facility Non Haz Waste: Address of Recover/Disposer	Name and License / Permit No. and Address of Final Recoverer / Disposer (HAZARDOUS WASTE ONLY)	Actual Address of Final Destination i.e. Final Recovery / Disposal Site (HAZARDOUS WASTE ONLY)
						M/C/E	Method Used					
Within the Country	13 02 08	Yes	0.0	other engine, gear and lubricating oils	R1	M	Weighed	Offsite in Ireland	Enva,W0184-1	Clonminam Industrial Estate, ,Portlaoise,County Laois,Ireland	ENVA Ireland,W0184-01, Clonminam,Portlaoise,Co Laois, ,Ireland	Clonminam,Portlaoise,Co Laois, ,Ireland
Within the Country	15 01 01	No	22.96	paper and cardboard packaging	R3	M	Weighed	Offsite in Ireland	Dillon Waste Ltd,WFP-KY-10-001	The Kerries , ,Tralee,County Kerry,Ireland		
Within the Country	15 01 02	No	22.16	plastic packaging	R3	M	Weighed	Offsite in Ireland	Dillon Waste Ltd,WFP-KY-10-001	The Kerries , ,Tralee,County Kerry,Ireland		
Within the Country	15 01 04	No	5.23	metallic packaging	R4	M	Weighed	Offsite in Ireland	Dillon Waste Ltd,WFP-KY-10-001	The Kerries , ,Tralee,County Kerry,Ireland		
Within the Country	15 01 06	No	18.5	mixed packaging	R3	M	Weighed	Offsite in Ireland	Killarney waste Disposal,W0217-01	Aughacureen, ,Killarney ,County Kerry,Ireland		
Within the Country	15 01 07	No	31.024	glass packaging	R5	M	Weighed	Offsite in Ireland	Dillon Waste Ltd,WFP-KY-10-001	The Kerries , ,Tralee,County Kerry,Ireland		
To Other Countries	16 02 11	Yes	6.977	discarded equipment containing chlorofluorocarbons, HCFC, HFC	R4	M	Weighed	Abroad	Electrical Waste Management,WFP-DS-11-0014-04	Block 648,Jordanstown Drive,Greenogue Ind Estate,Dublin,Ireland	European Metal Recycling,WML 101767,Alexander Dock 1,Bootle,Liverpool,L201BX,United Kingdom	Alexander Dock 1,Bootle,Liverpool,L201BX,United Kingdom
To Other Countries	16 02 14	No	16.311	discarded equipment other than those mentioned in 16 02 09 to 16 02 13	R4	M	Weighed	Abroad	Electrical Waste Management,WFP-DS-11-0014-04	Block 648,Jordanstown Drive,Greenogue Ind Estate,Dublin,Ireland		
Within the Country	20 01 01	No	49.02	paper and cardboard	R3	M	Weighed	Offsite in Ireland	Dillon Waste Ltd,WFP-KY-10-001	The Kerries , ,Tralee,County Kerry,Ireland		
Within the Country	20 01 11	No	0.76	textiles	R3	M	Weighed	Offsite in Ireland	Textile Recycling,WPR 014/2	Belgard Road,Tallaght,Dublin,24,Ireland		
To Other Countries	20 01 21	Yes	0.0	fluorescent tubes and other mercury-containing waste	R5	M	Weighed	Abroad	KMK Metals,W0113-01 Eco Fuels Ltd,WFP/KY/11/005-01	Cappincur Industrial estate, ,Tullamore,County Offaly,Ireland	Alba Service GmbH & Co KG,E57757020,Kanalstrasse 64, ,Rheine,48432,Germany	Kanalstrasse 64, ,Rheine,48432,Germany
Within the Country	20 01 25	No	0.0	edible oil and fat	R1	M	Weighed	Offsite in Ireland		Fossa,Killarney,Kerry, ,Ireland		
Within the Country	20 01 34	No	0.884	batteries and accumulators other than those mentioned in 20 01 33	R4	M	Weighed	Offsite in Ireland	Enva,W0184-1	Clonminam Industrial Estate, ,Portlaoise,County Laois,Ireland		
Within the Country	20 01 35	Yes	30.266	discarded electrical and electronic equipment other than those mentioned in 20 01 21 and 20 01 23 containing hazardous components	R4	M	Weighed	Offsite in Ireland	Electrical Waste Management,WFP-DS-11-0014-04	Block 648,Jordanstown Drive,Greenogue Ind Estate,Dublin,Ireland	The Recycling Village,WFP/MH/11/0005/01, Unit 21 Duleek Business Park, Commons,Duleek,County Meath,Ireland	Unit 21 Duleek Business Park, Commons,Duleek,County Meath,Ireland
To Other Countries	20 01 35	Yes	12.049	discarded electrical and electronic equipment other than those mentioned in 20 01 21 and 20 01 23 containing hazardous components	R4	M	Weighed	Abroad	Electrical Waste Management,WFP-DS-11-0014-04	Block 648,Jordanstown Drive,Greenogue Ind Estate,Dublin,Ireland	European Metal Recycling,WML 101767,Alexander Dock 1,Bootle,Liverpool,L201BX,United Kingdom	Alexander Dock 1,Bootle,Liverpool,L201BX,United Kingdom
Within the Country	20 01 40	No	48.16	metals	R4	M	Weighed	Offsite in Ireland	United Metals,WFP-LK-2013-147A-R1	pk,Ballysimon Road,Limerick, ,Ireland		
Within the Country	20 03 01	No	535.6	mixed municipal waste	R3	M	Weighed	Offsite in Ireland	Killarney waste Disposal,W0217-01	Aughacureen, ,Killarney ,County Kerry,Ireland		

\* Select a row by double-clicking the Description of Waste then click the delete button