

Starrus Eco Holdings Ltd.

**Annual Environmental
Report (AER) 2016
Millennium MRF,
Ballycoolin, Dublin 11
Licence: W0183-01**

April 2017

**CDM
Smith**

Document Control Sheet

Client		Starrus Eco Holdings Limited (SEHL)		
Project		Annual Environmental Report (AER) Millennium Park Material Recovery Facility Waste Licence W0183-01		
Project No:		113988		
Report		2016 AER		
Document Reference:		DG_24 Millennium Park 2016 AER		
Version	Author	Checked	Reviewed	Date
1 Final	B. Sexton	B. Barrett	P. Barrett	06/04/2017

Distribution	Copy No.

TABLE OF CONTENTS

SECTION 1 INTRODUCTION	1
SECTION 2 SITE DESCRIPTION.....	2
SECTION 3 EMISSIONS MONITORING	4
SECTION 4 SITE DEVELOPMENT WORKS	9
SECTION 5 WASTE RECEIVED AND CONSIGNED FROM THE FACILITY.....	10
SECTION 6 ENVIRONMENTAL INCIDENTS AND COMPLAINTS	15
SECTION 7 ENVIRONMENTAL DEVELOPMENT	16
SECTION 8 OTHER REPORTS	22

LIST OF TABLES

Table 1 Waste Acceptance Categories & Quantities at Millennium Park.....	2
Table 2 Existing Onsite Plant and Machinery.....	3
Table 3 Emission Monitoring and Reporting Frequencies	4
Table 4 SE-1 Wastewater Monitoring Results 2016	5
Table 5 Noise Monitoring Results 2016	6
Table 6 Dust Monitoring Results August 2016.....	7
Table 7 Dust Monitoring Results September 2016.....	7
Table 8 Dust Monitoring Results December 2016.....	8
Table 9 Estimates of Resources used on site – 2015 & 2016.....	9
Table 10 Waste Received & Consigned 2016.....	10
Table 11 Waste Received & Consigned 2015.....	12
Table 12 Waste Received & Consigned 2004 - 2016	14
Table 13 Progression of 2016 Objectives and Targets.....	18
Table 14 Objectives and Targets for 2017	19

LIST OF APPENDICES

- Appendix 1: Sampling Locations
- Appendix 2: IMS
- Appendix 3: European Pollutant Release and Transfer Register

Section 1 Introduction

1.1 Reporting Period

This is the 2016 Annual Environmental Report (AER) for the Starrus Eco Holdings Ltd (SEHL), Material Recovery Facility (MRF) at Millennium Business Park, Ballycoolin, Dublin 11. It covers the period from the 1st January 2016 to the 31st December 2016.

1.2 IED Licence

The Environmental Protection Agency (EPA) transferred Licence No. W0183-01 to Starrus Eco Holdings Limited for its facility at Millennium Business Park, Grange, Ballycoolin, Co. Dublin on the 4th of March 2014.

On the 16th of December 2015, the Licence was amended by the EPA and deemed to be an industrial emissions Licence (IED) granted under Part IV of the Environmental Protection Act 1992 as amended.

This report is prepared in accordance of condition 10.9 of the Licence, which requires and Annual Environmental Report (AER) for the facility to be submitted to the EPA.

Section 2 Site Description

2.1 Site Location

SEHL operate a MRF at the Millennium Business Park, Ballycoolin, Dublin 11. The facility is situated in West Dublin, approximately 5km north-west of Finglas. The surrounding area is characterised mainly by industrial and commercial land use.

2.2 Licenced Waste Activities

The facility is in operation since July 2006. It is currently licensed to accept and process 159,000 tonnes of waste per annum, comprising commercial/industrial non-hazardous waste, municipal waste and construction and demolition wastes. The facility has a potential to expand that figure to 220,000 tonnes if it was to develop Phase II of the facility. All waste processing takes place inside the waste transfer building, as specified in Condition 4.1 of the Licence. The Agency has granted approval for the outdoor storage of wrapped bales of Solid Recovered Fuel (SRF).

2.2.1 Waste Types

The licensed waste types and quantities under Schedule A of the Licence are:

Table 1 Waste Acceptance Categories & Quantities at Millennium Park

Waste Type	Maximum (tonnes per annum)	
	Phase I	Phase I
Municipal	65,000	100,000
Commercial & Industrial	70,000	90,000
Construction & Demolition Waste	24,000	30,000
Total	159,000	220,000

No hazardous wastes or liquid wastes are accepted at the facility.

2.2.2 Waste Processing

The main processes carried out at the facility are: (really just acting as a transfer station now)

Commercial & Industrial (C&I) Waste

Commercial and Industrial waste is delivered to the facility by refuse collection vehicles or ejection trailers in two forms, mixed waste and pre segregated dry recyclables. This waste is off loaded in dedicated bays inside the MRF building. The dry mixed recyclables are placed in separate bays from mixed waste. The waste upon tipping is inspected for contamination and unsuitable materials. These are removed immediately into a quarantine area.

The dry recyclables are moved into storage bays. This is later loaded into trailers and transported off site.

The mixed waste is initially sorted using a mechanical grab to remove large items such as timber and metal, which are removed to other storage areas in the building. The recovered materials are sent to offsite facilities for recycling, whilst residual waste is either landfilled or sent offsite for use as Solid Recovered Fuel (SRF).

Construction & Demolition Waste (C&D)

C&D waste is tipped inside the MRF building. The pre segregated and mixed waste are put into separate waste bays. The waste upon tipping is inspected for contamination and unsuitable materials. These are removed immediately into a quarantine area.

The pre segregated recyclables are moved into storage bays. This is later loaded into trailers and transported off site.

The mixed waste is initially sorted using a mechanical grab to remove large items such as timber and metal, which are removed to other storage areas in the building.

In August 2014 an SEW was submitted and approved by the Agency. This allowed for the removal of the C&I and C&D processing lines and replaced the two processing lines with specialist baling and shredding equipment for dry recyclables. These have recently been removed and at present the site operates solely as a transfer station.

2.2.3 Plant and Machinery List

A list of the plant and machinery in use at the facility is presented in Table 2. The plant provides 100% duty capacity and 50% standby capacity for waste processing.

Table 2 Existing Onsite Plant and Machinery

No.	Plant	Model	Operational Capacity (tons per day)	Standby Capacity (tons per day)
1	Loading Grab	Fuchs MHL 340	2160	1710
1	Loading Shovel	Volvo L120E	8640	7440
1	Ulster	Shredder	10	0
2	Mitsubishi Forktruck	Forktruck	-	-
1	Mustang Skid Steer	Loader	-	-
2	Linde Clamp	Forktruck	-	-

Section 3 Emissions Monitoring

The monitoring required for the facility includes surface water, wastewater, dust and noise. All environmental emissions monitoring is carried out at the intervals and frequency specified in schedule D of the Licence, while reports presenting the results of this monitoring are also submitted to the Agency at various frequencies, in accordance with Schedule E of the Licence (Table 3).

Table 3 Emission Monitoring and Reporting Frequencies

Medium	Monitoring Frequency	Reporting Frequency
Surface Water	Quarterly	Quarterly
Wastewater	Every two months	Quarterly
Dust	Three times a year	Three times a year
Noise	Annually	Annually

Monitoring locations are shown on Drawing 001 in Appendix 1. An overview of the results of monitoring carried out at the facility in 2016 is presented in this Chapter.

3.1 Surface Water Monitoring

Following agreement with the Agency Surface Water sampling was not carried out at the facility in 2016. This was due to ongoing issues with the Millennium Business Park storm water system, which was resulting in back flowing of storm water into the SEHL system.

3.2 Waste Water Monitoring

The wastewater discharge comes from vehicle washing, drainage from the materials recovery shed, and yard area where waste processing and handling take place. It flows then to a silt trap and oil interceptor, before entering the municipal sewer system.

3.2.1 Monitoring Locations

Bi-monthly sewer monitoring was carried out at the monitoring point SE-1, as shown on Drawing 001.

3.2.2 Monitoring Parameters

Monitoring and analysis was carried out for the parameters listed in Schedule D of the Licence.

The full wastewater laboratory analysis was carried out by ALS laboratories.

3.2.3 Monitoring Results

The results for 2016 are presented in Table 4. ELVs set out in the Licence are also included in Table 4.

Table 4 SE-1 Wastewater Monitoring Results 2016

Parameter	Units	Feb-16	Apr-16	Jun-16	Aug-16	Oct-16	Dec-16	Emission Limit
pH	pH units	7.633	9.0	6.4	6.9	6.15	7.53	6.0-10.0
Conductivity	mS/cm	0.275	0.789	0.659	698	859	923	N/A
Temperature	°C	6.8	10.9	11.8	11.8	10.6	8.3	42
Sulphate	mg/l	28.4	57	14.14	8.59	25.6	54.4	1000
BOD	mg/l	2.55	73	589	1,880	745	174	3000
COD	mg/l	8.31	234	1,260	1,550	1,150	301	6000
Total Suspended Solids	mg/l	<2	412	438	272	796	152	2000
Oils, Fats & Greases	mg/l	<1	17.2	61.1	28.6	14.9	17.0	100
Ammoniacal Nitrogen	mg/l	1.03	41.6	22.1	38.9	28.1	11.9	100
Surfactants	mg/l	0.0718	0.22	0.88	0.53	0.46	<0.21	100
Phosphates	mg/l	0.0584	<0.6	2.6	7.0	58.4	1.8	100

N/A = None Available

3.2.4 Interpretation of Results

All levels detected in the reporting period were within the ELVs.

3.3 Noise Monitoring

Damian Brosnan Acoustics undertook annual noise monitoring on the 9th of June 2016. The monitoring was undertaken to measure and assess noise levels in accordance with Schedule D3 of the Licence. The measurements recorded have been used to determine compliance with the noise emission limits specified in Schedule C1 of the Licence. The noise emission limit specified in the Licence only applies to noise sensitive locations, with levels recorded at boundary locations not required to meet this limit.

Condition 6.5 of the Licence states that *“There shall be no clearly audible tonal component or impulsive component in the noise emissions from the activity at the noise sensitive locations.”*

Night-time monitoring was not carried out as the site is not operational during night-time hours and does not generate noise emissions during these hours.

3.3.1 Monitoring Locations

Daytime noise monitoring was undertaken at the four locations presented on Drawing 001. The monitoring locations include three onsite locations (N-1, N-2 and N-3) and one off-site noise sensitive location (NSL-1) as set out in Schedule D of the Licence.

3.3.2 Monitoring Results

Results of the noise monitoring carried out are summarised in Table 5.

Table 5 Noise Monitoring Results 2016

Location	Sample Time	Daytime			
		L _{Aeq, 30 min} (dB)	L _{A10, 30 min} (dB)	L _{A90, 30 min} (dB)	Specific L _{A90, 30 min} (dB)
N1	09/06/2016 13:30 – 14:00	47	49	44	<45
N2	09/06/2016 14:06 – 14:36	64	63	50	64
N3	09/06/2016 12:54 – 13:24	76	81	63	73
NSL1	09/06/2016 12:11 – 12:41	70	74	49	<49

3.3.3 Results Interpretation

L_{Aeq 30min} levels recorded at the boundary stations were 47 - 76 dB. SEHL emission dominated at two of these. Noise limits specified in the Licence do not apply to those locations.

At the offsite sensitive station NSL1, the only station to which the Licence noise limits apply, the L_{Aeq 30min} level was 70dB. SEHL emissions were not audible, and were therefore lower than the 55dB daytime noise limit specified in the Licence.

SEHL operations did not give rise to tones or impulses at NSL1, thus complying with condition 5.5 of the Licence.

3.4 Dust Monitoring

Dust monitoring was carried out on three occasions in 2016. The Licence requires a minimum of three yearly monitoring events to take place. The three monitoring events took place in August, September and December 2016. The measurements recorded have been used to determine compliance with the dust emission limit (350 mg/m²/d) specified in Schedule C2 of the Licence.

Bergerhoff style gauges were used to determine total dust deposition levels at the site. Four gauges were set up so that the dust jars were at a height of at least 1.5 m above the ground and the jars were set in place during the monthly monitoring event. The samples were submitted to City Analysts Laboratories Ltd. for analysis of dust contents.

3.4.1 Monitoring Locations

The dust monitoring was carried out at four on-site locations (DS-01, DS-02, DS-03 and DS-04) in 2016. The locations of these monitoring points are shown on Drawing 001.

3.4.2 Monitoring Results

The results for organic, inorganic and total dust deposition for the three monitoring events which took place in September, November and December are presented in Table 6, Table 7, and Table 8 respectively. The dust emission limit set out in the Licence is also included in these tables.

Table 6 Dust Monitoring Results August 2016

Sampling Point	Organic Dust	Inorganic Dust	Total Dust
	August 2016		
	mg/m ² /day		
DS-01	31.36	21.49	52.85
DS-02	Dust Jar Damaged		
DS-03	18.91	18.01	36.91
DS-04	12.62	11.05	23.67
Limit			350

Table 7 Dust Monitoring Results September 2016

Sampling Point	Organic Dust	Inorganic Dust	Total Dust
	September 2016		
	mg/m ² /day		
DS-01	21.15	48.19	69.34
DS-02	Dust Jar Damaged		
DS-03	5.55	19.47	25.02
DS-04	24.57	17.34	41.91
Limit			350

Table 8 Dust Monitoring Results December 2016

Sampling Point	Organic Dust	Inorganic Dust	Total Dust
	December 2016		
	mg/m ² /day		
DS-01	20.25	120.62	140.87
DS-02	20.98	71.31	92.29
DS-03	51.28	193.21	244.49
DS-04	19.97	41.46	61.43
Limit			350

3.4.3 Interpretation of Results

No exceedances of the dust deposition limit of 350 mg/m²/day were evident from the monitoring, which took place during the 2016 reporting year.

Section 4 site development works

4.1 Specified Engineering Works

No specified engineering works in accordance with those listed in Schedule B of the Licence were carried out during the 2016 reporting period.

4.2 Summary of Resource & Energy Consumption

Resources consumed at Millennium Business Park MRF include diesel fuel, electricity, oil (hydraulic, transmission, engine), truck wash detergent, water (mains supply), natural gas, anti-freeze. Table 9 presents an estimate of the resources used on-site during 2016 as well as 2015.

Table 9 Estimates of Resources used on site – 2015 & 2016

Resource	Quantities used 2015	Quantities used 2016
Diesel (litres)	60,000	62,950
Electricity (kWh)	927,715	645,699
Oils (hydraulic, transmission, engine) (litres)	2,000	1,500
Detergent (truck wash) (litres)	30	30
Water (mains)(litres)	3,890,000	8,069,000
Natural Gas (kWh)	52,040	52,276
Anti-Freeze (litres)	75	75

4.3 Tank & Pipeline Integrity Testing

Condition 3.13.3 of the Licence requires that tank, drum, pipeline and bund testing is to be carried out every three years on site. Pipeline testing took place in May 2016 which passed the pipeline fit for purpose. Bund testing is due to be undertaken in 2017.

Section 5 Waste received and consigned from the facility

The waste processing which takes place at the facility and the maximum quantity of waste which may be processed at the facility are outlined in Section 2 of this document.

A detailed description of the wastes received and consigned in 2015 is presented in the PRTR submission in Appendix 3.

Table 10 shows the quantities of wastes accepted and consigned for the reporting period. The total quantity of waste accepted was 87,154.10 tonnes and the total amount consigned was 84,846.85 tonnes. The records show that more waste was received at the site than was consigned from it. The difference is due to waste which remained onsite at the end of 2016 which will be consigned in 2017.

For comparative purposes, the quantity of waste received and consigned from 2004 to 2016 is presented in Table 12.

As per Condition 5.8 of the Licence, all waste consigned from the site went to authorised recovery and disposal facilities. A copy of the relevant Facility Permit or Waste Licences is retained on site for Agency inspection.

Table 10 Waste Received & Consigned 2016

EWC	Description	Waste In	Waste Out
101008	Casting cores and moulds from pouring	5.49	
150101	Paper and cardboard packaging	10,376.16	10,262.92
150102	Plastic packaging	1,057.32	989.75
150103	Wooden packaging	810.10	443.43
150104	Metallic packaging	25.43	2.80
150105	Composite packaging	15.51	
150106	Mixed packaging	5.40	3,272.59
150107	Glass Packaging	22.06	
150102	Shredded Plastics	3.28	
160504	Pressurised gas containers		1.20
170101	Concrete		24.60
170203	Plastic	30.07	29.52
170405	Iron and steel	1.20	
170411	Cables other than those mentioned in 17 04 10	0.38	

EWC	Description	Waste In	Waste Out
170504	Soils and stones other than those mentioned in 17 05 03	2,213.68	2,317.87
170604	Insulation materials other than those mentioned in 17 06 01 and 17 06 03	9.87	
170802	Gypsum-based construction materials other than those mentioned in 17 08 01	255.29	
170904	Mixed construction and demolition wastes other than those mentioned in 17 09 01, 17 09 02 and 17 09 03	1,281.97	1,489.90
190905	Saturated or spent ion exchange resins	5.41	
191201	Mixed Packaging	1.36	
191207	Wood	14.91	70.94
191209	Minerals (for example sand, stones)	1,185.10	440.03
191210	Combustible waste RDF	6,255.69	4,041.66
191212	Other wastes (including mixtures of materials) from mechanical treatment of wastes other than those mentioned in 19 12 11	1,126.30	2,570.78
200101	Paper and cardboard	15,772.33	
200102	Glass	10.85	
200108	Biodegradable kitchen and canteen waste	996.03	1,147.72
200111	Textiles	28.58	
200138	Wood other than that mentioned in 20 01 37	2,312.43	2,513.30
200139	Plastics	35.57	4.90
200140	Metals	941.04	1,323.00
200201	Biodegradable waste	1,796.04	1,536.99
200301	Mixed municipal waste	20,681.67	21,118.77
200303	Street-cleaning residues	545.97	280.20
200307	Bulky waste	19,331.65	14,309.54
	Total received	87,154.13	
	Total consigned		84,846.85
	Recovery		77,780.76
	Disposal		7,124.92
	Recovery Rate (%)		91

Table 11 Waste Received & Consigned 2015

EWC	Description	Waste In	Waste Out
10409	Sand	9.54	
70599	Peat Based Air Filter Media	109.3	
101008	Gypsum	6.22	
130208	Waste Oil		1.9
130309	Plastic Film	0.049	
150101	Cardboard Packaging	14442.103	13882.6
150102	Plastic Packaging	1270.532	1135.87
150103	Wooden Packaging	1060.379	500.435
150104	Metal Packaging	34.366	
150105	Tetra Pak Cartons	11.9	
150106	Mixed Packaging	6308.585	8054.93
150107	Glass	21.31	
160601	Batteries		0.81
160103	Tyres	14.04	
170203	Plastic	198.2	8.24
170302	Bitmac	98.02	98.2
170405	Stainless Steels	0.62	
170504	Soil & Stones	2668.82	2789.96
170802	Plasterboard	151.033	
170904	C&D Inert Mixed	1047.661	
180104	Solid Recovered Fuel (SRF)	66.58	
190902	Interceptor Sludge		34.24
190905	Resin	7.94	
191201	Paper & Cardboard Residue	10.259	
191204	Rubber	1.19	
191207	Wood	69.634	344.62
191209	C&D Inert Mixed	689.91	
191210	Solid Recovered Fuel (SRF)	1012.192	5862
191212	C&I Dry Mixed	9419.703	1921.14
200101	Cardboard & Paper	24138.367	22997.1
200102	Glass	23.53	
200108	Compost	3580.268	3308.9

EWC	Description	Waste In	Waste Out
200111	Textile	8.72	
200138	Wood	2491.794	1343.86
200139	Plastic	32.82	15.58
200140	Metal	720.581	901.473
200201	Green Biogradable Waste	1504.569	1372.34
200301	MSW Municipal Mixed Waste	15958.956	17314.3
200303	LDF Street Cleaning	626.949	56.92
200307	C&I Dry Mixed	17700.807	18517.28
	Total Received	105,517.447	
	Total Consigned		100,462.678
	Total Disposed		22,910.12
	Total Recovered		77552.558
	Recovery Rate (%)		77.20

Table 12 Waste Received & Consigned 2004 - 2016

Description	Total Received	Total Consigned
2016	87,154.13	84,900.67
2015	105,517.447	100,462.678
2014	80,987.80	79,850.41
2013	83,500.66	81,230.14
2012	92,484.12	87,448.73
2011	87,191	83,181
2010	74,694.50	68,868.59
2009	79,469.57	77,224.94
2008	133,813.88	129,366.26
2007	167,056.84	161,828.21
2006	79,570.21	80,725.68
2005	105,517.447	100,462.678
2004	80,987.80	79,850.41

Section 6 Environmental incidents and complaints

6.1 Incidents

There were no reportable incidents on site in 2016.

6.2 Register of Complaints

SEHL maintains a register of complaints received in accordance with Condition 10.4 of the Licence. A copy of all complaints and responses are retained on site.

There were no complaints received in 2016.

Section 7 ENVIRONMENTAL DEVELOPMENT

7.1 Environmental Management System

An Integrated Management System (IMS) has been implemented by SEHL in accordance with the requirements of Occupational Health and Safety Assessment Series (OHSAS) 18001:2007 and International Standard Organisation (ISO) 14001:2004 in order to manage the health, safety and environmental performance of their business.

The IMS has been developed to incorporate continual improvement, while constantly ensuring that all requirements of the Licence conditions are taken into account. SEHL has prepared and effectively implement documented procedures and instructions in accordance with the requirements of both OHSAS 18001:2007 and ISO 14001:2004.

A list of environmental, management, operating and maintenance procedures have been developed by SEHL as part of the IMS. Details of these procedures are outlined in Appendix 2.

The status of objectives and targets which were previously identified for 2016 and the proposed objectives and targets for 2017 are presented in Table 13 and Table 14.

7.1.1 Site Management

The management and staffing structure is outlined below:

Name: Donal Monahan

Role: Director of Operations

Experience: 15 years' experience waste management experience;

Name: Gwen Cooper

Role: Acting Facility Manager (until Sept 2016)

Experience: 10 years' experience; has completed the FÁS waste management course.

Name: Robert Hughes

Responsibility: Site Supervisor (until Sept 2016)

Experience: 13 years' experience in Waste Management.

Name: Bebhinn Brennan
Role: EHS Officer
Experience: 8 years experience; has completed the FAS Waste Management course equivalent.

Name: Eanna Bailey
Role: Weighbridge Manager (site deputy)
Experience: Degree in Environmental Science

7.1.2 Staff Training

One staff member, Bebhinn Brennan, completed the FAS Waste Management course equivalent in 2016.

7.2 Environmental Management Progression and Projected Programme

7.2.1 Progression of 2015 Objectives and Targets

The objectives and targets that were achieved during this reporting period are outlined in Table 7.1.

7.2.2 Projected 2016 Objectives and Targets

The projected targets and objectives for 2016 are presented in Table 7.2.

Table 13 Progression of 2016 Objectives and Targets

No.	Objective	Target	Responsibility	Time scale
1	Increase awareness of Odour Management on site and group wide	Specify Odour detection in Site Inspection Database (EF-10A) on a daily basis and generate actions as appropriate	Site Management/EHS	On-going
2	Waste storage practices	Review waste storage practices on each site to ensure that they are in line with Licence conditions, fire prevention and insurance recommendations	Site Management/EHS	On-going
3	Emergency response procedures - ER pack update	Review the Emergency Response Pack on each site and ensure that all information & equipment required in case of an emergency is available. Confirm that relevant staff training adequately addresses.	Site Management/EHS	Completed
4	CRAMP, ELRA & Financial Provision	CRAMP, ELRA & Financial Provision to be reviewed	EHS team	Under review
5	Waste acceptance, classification & records	EWC training for all weighbridge ops. Centralisation of all Licences & permits incl NWCPs for hauliers.	EHS team	On-going
6	Pipeline integrity & bund testing	Arrange for integrity testing of pipelines and bunds as per Licence requirements.	Site Management/EHS	Pipelines completed. Bunds to be tested in 2017.
7	Energy Audit	Completed energy audit as per amended Licence conditions	Site Management/EHS	Completed
8	ISO 14001/OHSAS 18001 Recertification	Completion of external ISO certification audit at the facility	Site Management/EHS	Completed
9	Surface Water Drainage	Review on-site surface water drainage and add protective grill mesh to vulnerable gullies.	Site Management/EHS	SW network being pumped to foul due to failure of the external network

Table 14 Objectives and Targets for 2017

No.	Objective	Target	Responsibility	Time scale
1	Odour management	Ensure odour management plans are followed and potential new sources of odour are identified	Site management	Q1 - Q4
2	Fire prevention	Implement recs from Fire Risk Assessments Update ERP & APP Maintain fire detection equipment	Site management/EHS team	Q1 - Q4
3	Waste storage	Review waste storage practices on each site to ensure that they are inline with licence conditions, fire prevention and insurance recommendations	Site management/EHS team	Q1 - Q4
4	Waste acceptance, classification & records	EWC training for all weighbridge ops. Centralisation of all licences & permits inc NWCPs for hauliers.	EHS team	Q1 - Q4
5	CRAMP, ELRA & Financial Provision	CRAMP, ELRA & Financial Provision to be reviewed	EHS team	Q2
6	Lighting in MRF buildings	Clean & upgrade where required all light fittings in MRF buildings	Site management	Q3
7	NWCP exemptions	Implement NWCP exemption declarations	Site management	Q1 - Q4
8	Fire risk assessment	Implement FRA recommendations	Site management/EHS team	Q2
9	Submit licence review		EHS team	Q2/Q3
10	Replace wind sock		Site management	Q2
11	Storm water network	Investigate blockage in SW pipeline once external network operational again	Site management/EHS team	Q2-Q4
12	Bund tests	Bund tests due	EHS team	Q1

7.3 Communications Programme

A commitment has been made by SEHL to make its Environmental, Health & Safety Policy and other relevant records available to the public and interested parties. To facilitate this, a Communications Programme has been established by SEHL. This programme details how members of the public may access environmental information at the facility.

The following records are available for public inspection onsite:

- Environmental, Health & Safety Policy;
- IED Licence;
- Licence Application and Review documentation;
- Monitoring records;
- Complaints File; and
- EPA Correspondence File.

Members of the public may inspect any of the above records at the site between 9am and 4pm.

It is necessary to arrange visits to the site in advance of them taking place. This may be done by contacting the Facility Manager or Supervisor at 1890500 800.

7.4 Nuisance Controls

Greenstar has contracted a vermin control company Pestguard to carry out nuisance control at the facility. Pestguard undertake a 6 weekly review of the vermin activity on-site along with an inspection of the bait traps that are located throughout the facility.

7.5 Waste Recovery

The facility is designed to increase the recycling of biodegradable materials and reduce the volume of waste disposed to landfill. Of the 84,900 tonnes of waste consigned from the facility approximately 90% was sent for recovery.

7.6 DMP, ELRA & Financial Provision

A Decommissioning Management Plan (DMP) and Environmental Liabilities Risk Assessment (ELRA) including Financial Provision (FP) have been developed for the site and were submitted to the Agency in 2013. These have both been approved by the Agency and provision is in place with their agreement. A review of both reports will be completed in 2017.

7.7 Rainwater and Wastewater Volumes

No rainwater was reused at the facility in 2016. The grey water reuse system has been de-commissioned. As it is not possible to give an exact figure for the amount of wastewater produced during 2016 an estimate of 6,000 m³ of water was used by the truck wash during the year.

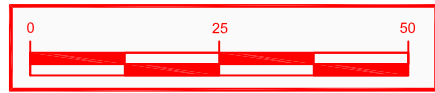
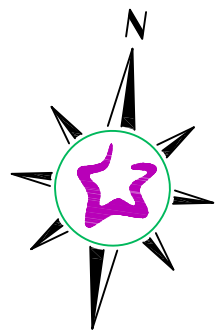
Wastewater discharges to the municipal sewer serving the industrial estate. The sewer water then flows to a waste water treatment plant operated by Fingal County Council.

Section 8 Other reports

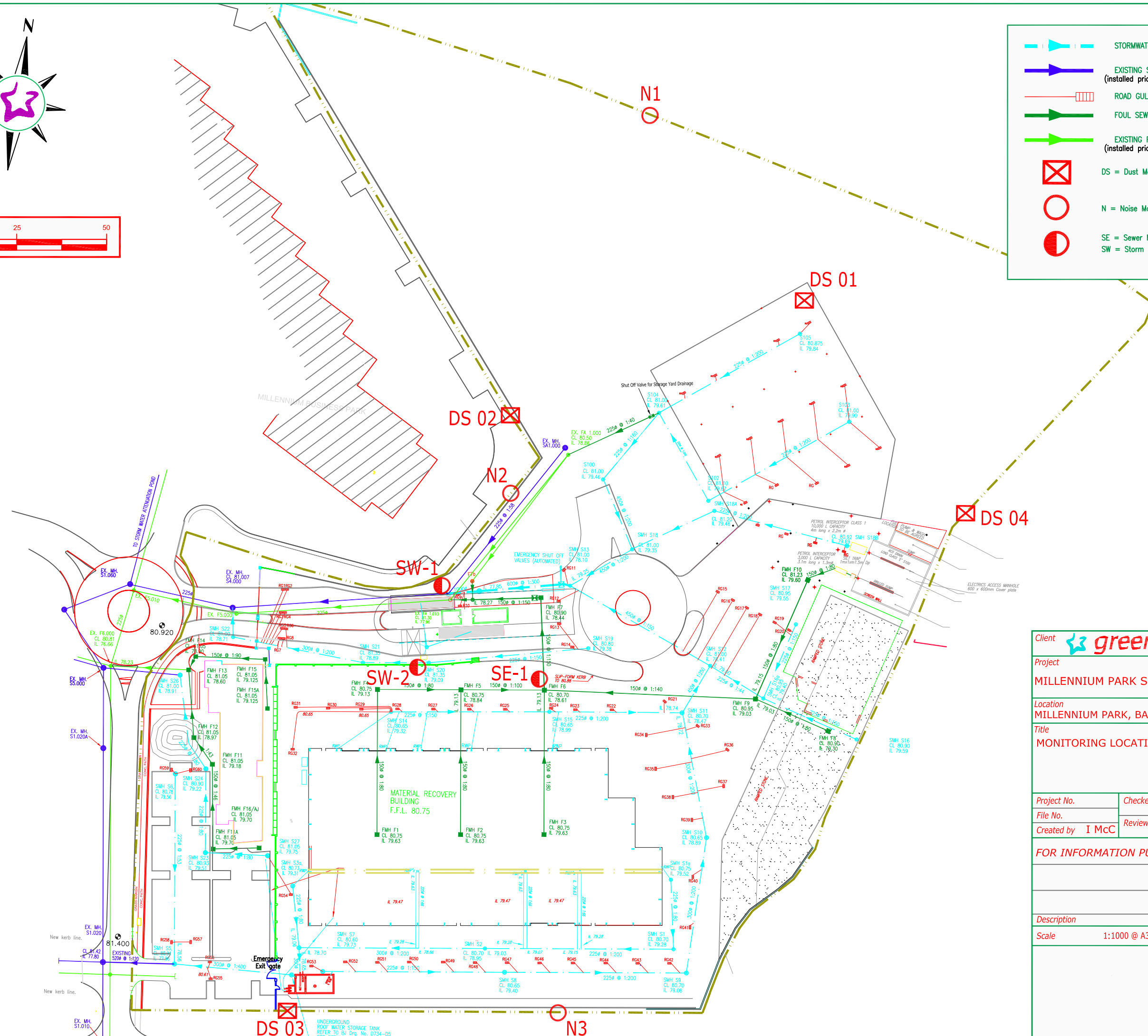
8.1 European Pollutant Release and Transfer Register

A copy of the EPRTTR return submitted to the Agency via the web-based data reporting system is included in Appendix 3.

Appendix 1: Sampling Locations



	STORMWATER DRAINAGE
	EXISTING STORMWATER DRAINAGE (installed prior to facility construction)
	ROAD GULLIES AND CONNECTIONS
	FOUL SEWER DRAINAGE
	EXISTING FOUL SEWER DRAINAGE (installed prior to facility construction)
	DS = Dust Monitoring Point
	N = Noise Monitoring Point
	SE = Sewer Monitoring Point SW = Storm Water Monitoring Point



Client		
Project MILLENNIUM PARK SERVICES AS-BUILT		
Location MILLENNIUM PARK, BALLYCOOLIN, DUBLIN 11		
Title MONITORING LOCATIONS		
Project No.	Checked by	Drawing No.
File No.	Reviewed by	001
Created by I MCC		
FOR INFORMATION PURPOSES		23/06/14 A
Description		Date
Scale 1:1000 @ A3	Date	June 2015

CL OF OVERHEAD ESB CABLES

ESB Pylon

UNDERGROUND ROOF WATER STORAGE TANK REFER TO BU Drg. No. D734-05 FOR DETAILS

Appendix 2: Integrated Management System



Doc. No.: Control	Revision No.: As Shown	Issue Date: As Shown
Approved By:	Malcolm Dowling – Group Compliance Manager	Page 1 of 5

Integrated Procedures - IP

IP-01	Document & Record Control Procedure	Rev 01, 28/04/14
IP-02	Health & Safety Risk Assessment Procedure	Rev 01, 28/04/14
IP-03	Environmental Aspects & Impacts Procedure	Rev 01, 28/04/14
IP-04	Legal & Regulatory Requirements Procedure	Rev 01, 28/04/14
IP-05	Objectives, Targets & Management Programmes Procedure	Rev 01, 28/04/14
IP-06	Competence, Training & Awareness Procedure	Rev 01, 28/04/14
IP-07	Communication & Consultation Procedure	Rev 01, 28/04/14
IP-08	Monitoring, Measurement & Improvement Procedure	Rev 01, 28/04/14
IP-09	Evaluation of Compliance Procedure	Rev 01, 28/04/14
IP-10	Non Conformances, Corrective/Preventive Actions Procedure	Rev 01, 28/04/14
IP-11	Internal Audit Procedure	Rev 01, 28/04/14
IP-12	Management Review Procedure	Rev 01, 28/04/14
IP-13	Control of Contractors/Visitors Procedure	Rev 01, 28/04/14
IP-14	Health & Safety & Environmental Monitoring	Rev 01, 28/04/14
IP-15	Emergency Preparedness & Response Procedure	Rev 01, 28/04/14
IP-16	Fire Prevention Procedure	Rev 01, 28/04/14
IP-17	Bin Washing Procedure	Rev 01, 28/04/14

Safety Procedures - SP

SP-01	Permit to Work Procedure	Rev 01, 28/04/14
SP-02	Maintenance & Calibration Procedure	Rev 01, 28/04/14
SP-03	Mobile Plant Procedure	Rev 01, 28/04/14
SP-04	Fork Truck Procedure	Rev 01, 28/04/14
SP-05	Operation of Fixed Plant Procedure	Rev 01, 28/04/14
SP-06	Lock Out / Tag Out Procedure	Rev 01, 28/04/14
SP-07	Health & Safety Notification Procedure	Rev 01, 28/04/14
SP-08	MSW Shredder routine Maintenance & Clearing of Blockages Procedure (SCGT)	Rev 01, 28/04/14
SP-09	Weighbridge & Tipping Procedure (SCGT)	Rev 01, 28/04/14
SP-10	Cleaning of Washing Bay (Greenogue)	Rev 01, 28/04/14



Doc. No.: Control	Revision No.: As Shown	Issue Date: As Shown
Approved By:	Malcolm Dowling – <i>Group Compliance Manager</i>	Page 2 of 5

Environmental Procedures - EP		
EP-01	Office Waste & Energy Management Procedure	Rev 01, 28/04/14
EP-02	Decommissioning and Aftercare Procedure	Rev 01, 28/04/14
EP-03	Environment Communications Procedure	Rev 01, 28/04/14
EP-04	Waste Permits & Licences Procedure	Rev 01, 28/04/14
EP-05	Waste Acceptance Procedure	Rev 01, 28/04/14
EP-06	Unacceptable Waste Procedure	Rev 01, 28/04/14
EP-07	Waste & Material Storage Procedure	Rev 01, 28/04/14
EP-08	Waste Processing Procedure	Rev 01, 28/04/14
EP-09	Site Infrastructure Procedure	Rev 02, 06/05/15
EP-10	Nuisance Management Procedure (Site Specific)	(Site Specific) Rev 01, 28/04/14
EP-11	Civic Amenity Site Procedure	Rev 01, 28/04/14

Doc. No.: Control	Revision No.: As Shown	Issue Date: As Shown
Approved By:	Malcolm Dowling – Group Compliance Manager	Page 3 of 5

Amendment History

Date	Amendment No.	Procedure No:	Revision No:	Comment	Authorised By
05.07.10	01	All	01	Initial Issue	M.D & O.C
13.09.10	02	EP-03	02	Issue of Incident Reports	M.D
20.09.10	03	IP-10	02	Env issues not logged on WIMS Database	M.D
29.10.10	04	IP-13	02	Use of M&M equipment by contractors	M.D & O.C
29.10.10	05	IP-14	02	Use of M&M equipment by contractors	M.D & O.C
29.10.10	06	SP-02	02	Inclusion of Maintenance Schedule	M.D & O.C
05.11.10	07	IP-04	02	Inclusion of other requirements	S.B & O.C
01.02.11	08	SP-08	01	Inclusion of new procedure	O.C
01.02.11	09	IP-10	03	Inclusion of SP-08	O.C
01.02.11	10	IP-15	02	Removal of SF-022	O.C
01.02.11	11	Contents	As shown	EP-10 Site Specific	M.D & O.C
01.02.11	12	IP-06	02	Addressing Agency Staff needs	M.D & O.C
01.02.11	13	Circ List	02	Amendment to document control	M.D & O.C
04.04.11	14	SP-02	03	Inclusion of Site Specific Maintenance schedules	O.C
07.06.11	15	IP-11	02	Inclusion of H&S & Env Internal Audit Schedules	M.D & O.C
14/09/11	16	EP-02	02	Inclusion of decommissioning of plant/equipment	S.B
15/09/11	17	IP-09	02	Inclusion of Statutory Inspections	O.C
01/12/11	18	SP-09	01	Inclusion of new procedure for SCGT	O.C
01/12/11	19	SP-10	01	Inclusion of new procedure for SCGT	O.C
03/05/12	20	SP-01	02	Amendment to remove SF 028	O.C
05/05/12	21	SP-11	01	Inclusion of a new procedure for Greenogue	O.C
28/05/12	22	IP-11	03	General Amendments to internal audit procedure	M.D & O.C
08/06/12	23	IP-13	03	Grammatical amendment	M.D & O.C
15/04/13	24	IP-06	03	Agency staff – sign-off record sufficient proof of training. TMS optional	M.D & O.C



Doc. No.: Control	Revision No.: As Shown	Issue Date: As Shown
Approved By:	Malcolm Dowling – Group Compliance Manager	Page 4 of 5

Date	Amendment No.	Procedure No:	Revision No:	Comment	Authorised By
30/06/13	25	IP-16	01	Inclusion of new procedure	M.D.
09/09/13	26	IP-03	02	Use of Scannell Software Solutions (EnviroManager) instead of IF-03A	M.D & O.C
09/09/13	27	IP-04	30	Use of Scannell Software Solutions (EnviroManager) instead of IF-03A	M.D & O.C
09/09/13	28	IP-05	02	Use of Scannell Software Solutions (EnviroManager) instead of IF-03A	M.D & O.C
16/10/13	29	EP-03	03	Introduction of EPA ALDER Portal	K.B
28/04/14	30	All EP's & IP's	01	Change of Company name and review of all Integrated and Env procedures	M.D & O.C
28/04/14	31	SP's	01	Change of Company name and review of all safety procedures including re-numbering & deletion of Motor Claim Notification Procedure – SP 08	O.C
06/05/15	32	EP-09	02	Ref to new form EF-11 added	SS



Doc. No.: Control	Revision No.: 01	Issue Date: 28 th April 2014
Approved By:	Malcolm Dowling – Group Compliance Manager	Page 5 of 5

Circulation List

The Integrated Procedures Manual is a controlled document. Copies of the Procedures Manual are available as follows;

Copy Number	Holder
1 (Master Copy)	Group H&S Manager
2	Greenstar EnviroManager
3	Greenstar Intranet – Electronic Copy

Appendix 3: European Pollutant Release and Transfer Register

PRTR Returns Workbook

REFERENCE YEAR	2016
-----------------------	------

1. FACILITY IDENTIFICATION

Parent Company Name	Starrus Eco Holdings Limited
Facility Name	Starrus Eco Holdings Limited (Millenium Business Park)
PRTR Identification Number	W0183
Licence Number	W0183-01

Classes of Activity

No.	class_name
-	Refer to PRTR class activities below

Address 1	Millennium Business Park
Address 2	Grange
Address 3	Ballycoolin
Address 4	Dublin 11
	Dublin
Country	Ireland
Coordinates of Location	-6.34044 53.4084
River Basin District	IEEA
NACE Code	3832
Main Economic Activity	Recovery of sorted materials
AER Returns Contact Name	sara smyth
AER Returns Contact Email Address	Sara.Smyth@greenstar.ie
AER Returns Contact Position	environmental manager
AER Returns Contact Telephone Number	353 (01) 274 6236
AER Returns Contact Mobile Phone Number	
AER Returns Contact Fax Number	353 (01) 282 9525
Production Volume	0.0
Production Volume Units	
Number of Installations	0
Number of Operating Hours in Year	0
Number of Employees	20
User Feedback/Comments	BOD, COD and FOG levels in the wastewater were greater than in 2015 but were within the ELVs on all occasions.
Web Address	

2. PRTR CLASS ACTIVITIES

Activity Number	Activity Name
50.1	General
5(c)	Installations for the disposal of non-hazardous waste
50.1	General

3. SOLVENTS REGULATIONS (S.I. No. 543 of 2002)

Is it applicable?	
Have you been granted an exemption ?	
If applicable which activity class applies (as per Schedule 2 of the regulations) ?	
Is the reduction scheme compliance route being used ?	

4. WASTE IMPORTED/ACCEPTED ONTO SITE

[Guidance on waste imported/accepted onto site](#)

Do you import/accept waste onto your site for on-site treatment (either recovery or disposal activities) ?	
--	--

This question is only applicable if you are an IPPC or Quarry site

4.1 RELEASES TO AIR

[Link to previous years emissions data](#)

SECTION A : SECTOR SPECIFIC PRTR POLLUTANTS

POLLUTANT		RELEASES TO AIR			Please enter all quantities in this section in KGs				
No. Annex II	Name	M/C/E	METHOD		Emission Point 1	QUANTITY			
			Method Code	Designation or Description		T (Total) KG/Year	A (Accidental) KG/Year	F (Fugitive) KG/Year	
						0.0	0.0	0.0	0.0

* Select a row by double-clicking on the Pollutant Name (Column B) then click the delete button

SECTION B : REMAINING PRTR POLLUTANTS

POLLUTANT		RELEASES TO AIR			Please enter all quantities in this section in KGs				
No. Annex II	Name	M/C/E	METHOD		Emission Point 1	QUANTITY			
			Method Code	Designation or Description		T (Total) KG/Year	A (Accidental) KG/Year	F (Fugitive) KG/Year	
						0.0	0.0	0.0	0.0

* Select a row by double-clicking on the Pollutant Name (Column B) then click the delete button

SECTION C : REMAINING POLLUTANT EMISSIONS (As required in your Licence)

POLLUTANT		RELEASES TO AIR			Please enter all quantities in this section in KGs				
Pollutant No.	Name	M/C/E	METHOD		Emission Point 1	QUANTITY			
			Method Code	Designation or Description		T (Total) KG/Year	A (Accidental) KG/Year	F (Fugitive) KG/Year	
						0.0	0.0	0.0	0.0

* Select a row by double-clicking on the Pollutant Name (Column B) then click the delete button

Additional Data Requested from Landfill operators

For the purposes of the National Inventory on Greenhouse Gases, landfill operators are requested to provide summary data on landfill gas (Methane) flared or utilised on their facilities to accompany the figures for total methane generated. Operators should only report their Net methane (CH4) emission to the environment under T(total) KG/yr for Section A: Sector specific PRTR pollutants above. Please complete the table below:

Landfill:	Starrus Eco Holdings Limited (Millenium Business Park)			
Please enter summary data on the quantities of methane flared and / or utilised	T (Total) kg/Year	M/C/E	Method Used	Facility Total Capacity m3 per hour
	Total estimated methane generation (as per site model)	0.0		N/A
	Methane flared	0.0		0.0 (Total Flaring Capacity)
	Methane utilised in engine/s	0.0		0.0 (Total Utilising Capacity)
	Net methane emission (as reported in Section A above)	0.0		N/A

4.2 RELEASES TO WATERS

[Link to previous years emissions data](#)

| PRTR# : W0183 | Facility Name : Starrus Eco Holdings Limited (Millenium Business Park) | Filename : W0183_2016.xls | Return Year : 2016 |

06/04/2017 15:30

SECTION A : SECTOR SPECIFIC PRTR POLLUTANTS

Data on ambient monitoring of storm/surface water or groundwater, conducted as part of your licence requirements, should NOT be submitted under AER / PRTR Reporting as this only covers

RELEASES TO WATERS					Please enter all quantities in this section in KGs			
POLLUTANT		Method Used			QUANTITY			
No. Annex II	Name	M/C/E	Method Code	Designation or Description	Emission Point 1	T (Total) KG/Year	A (Accidental) KG/Year	F (Fugitive) KG/Year
					0.0	0.0	0.0	0.0

* Select a row by double-clicking on the Pollutant Name (Column B) then click the delete button

SECTION B : REMAINING PRTR POLLUTANTS

RELEASES TO WATERS					Please enter all quantities in this section in KGs			
POLLUTANT		Method Used			QUANTITY			
No. Annex II	Name	M/C/E	Method Code	Designation or Description	Emission Point 1	T (Total) KG/Year	A (Accidental) KG/Year	F (Fugitive) KG/Year
					0.0	0.0	0.0	0.0

* Select a row by double-clicking on the Pollutant Name (Column B) then click the delete button

SECTION C : REMAINING POLLUTANT EMISSIONS (as required in your Licence)

RELEASES TO WATERS					Please enter all quantities in this section in KGs			
POLLUTANT		Method Used			QUANTITY			
Pollutant No.	Name	M/C/E	Method Code	Designation or Description	Emission Point 1	T (Total) KG/Year	A (Accidental) KG/Year	F (Fugitive) KG/Year
					0.0	0.0	0.0	0.0

* Select a row by double-clicking on the Pollutant Name (Column B) then click the delete button

4.3 RELEASES TO WASTEWATER OR SEWER

[Link to previous years emissions data](#)

SECTION A : PRTR POLLUTANTS

OFFSITE TRANSFER OF POLLUTANTS DESTINED FOR WASTE-WATER TREATMENT OR SEWER					Please enter all quantities in this section in KGs			
POLLUTANT		METHOD			QUANTITY			
No. Annex II	Name	M/C/E	Method Used		Emission Point 1	T (Total) KG/Year	A (Accidental) KG/Year	F (Fugitive) KG/Year
			Method Code	Designation or Description				
					0.0	0.0	0.0	0.0

* Select a row by double-clicking on the Pollutant Name (Column B) then click the delete button

SECTION B : REMAINING POLLUTANT EMISSIONS (as required in your Licence)

OFFSITE TRANSFER OF POLLUTANTS DESTINED FOR WASTE-WATER TREATMENT OR SEWER					Please enter all quantities in this section in KGs			
POLLUTANT		METHOD			QUANTITY			
Pollutant No.	Name	M/C/E	Method Used		Emission Point 1	T (Total) KG/Year	A (Accidental) KG/Year	F (Fugitive) KG/Year
			Method Code	Designation or Description				
238	Ammonia (as N)	M	PER	Based on estimate of water used in wheel wash. Analysis is ISO accredited.	143.63	143.63	0.0	0.0
303	BOD	M	PER	Based on estimate of water used in wheel wash. Analysis is ISO accredited.	3463.55	3463.55	0.0	0.0
306	COD	M	PER	Based on estimate of water used in wheel wash. Analysis is ISO accredited.	4503.31	4503.31	0.0	0.0
240	Suspended Solids	M	PER	Based on estimate of water used in wheel wash. Analysis is ISO accredited.	2484.0	2484.0	0.0	0.0
314	Fats, Oils and Greases	M	PER	Based on estimate of water used in wheel wash. Analysis is ISO accredited.	166.56	166.56	0.0	0.0
308	Detergents (as MBAS)	M	PER	Based on estimate of water used in wheel wash. Analysis is ISO accredited.	2.59	2.59	0.0	0.0
343	Sulphate	M	PER	Based on estimate of water used in wheel wash. Analysis is ISO accredited.	188.13	188.13	0.0	0.0

* Select a row by double-clicking on the Pollutant Name (Column B) then click the delete button

4.4 RELEASES TO LAND

[Link to previous years emissions data](#)

| PRTR# : W0183 | Facility Name : Starrus Eco Holdings Limited (Millenium Business Park) | Filename : W0183_2016.xls | Return Year : 2016 |

06/04/2017 15:30

SECTION A : PRTR POLLUTANTS

POLLUTANT		METHOD			Please enter all quantities in this section in KGs		
RELEASERS TO LAND		METHOD USED			QUANTITY		
No. Annex II	Name	M/C/E	Method Code	Designation or Description	Emission Point 1	T (Total) KG/Year	A (Accidental) KG/Year
					0.0	0.0	0.0

* Select a row by double-clicking on the Pollutant Name (Column B) then click the delete button

SECTION B : REMAINING POLLUTANT EMISSIONS (as required in your Licence)

POLLUTANT		METHOD			Please enter all quantities in this section in KGs		
RELEASERS TO LAND		METHOD USED			QUANTITY		
Pollutant No.	Name	M/C/E	Method Code	Designation or Description	Emission Point 1	T (Total) KG/Year	A (Accidental) KG/Year
					0.0	0.0	0.0

* Select a row by double-clicking on the Pollutant Name (Column B) then click the delete button

5. ONSITE TREATMENT & OFFSITE TRANSFERS OF WASTE

IPR123 - W0163 | Facility Name: Sharn Eco Holdings Limited (Millennium Business Park) | Filename: W0163_2016.06 | Return Year: 2016

06/04/2017 15:30

Please enter all quantities on this sheet in Tonnes

Transfer Destination	European Waste Code	Hazardous	Quantity (Tonnes per Year)	Description of Waste	Waste Treatment Operation	Method Used		Location of Treatment	Licence/Permit No of Next Destination Facility Licence/Permit No of Recover/Disposer	Name and License / Permit No and Address of Final Recycler / Disposer (HAZARDOUS WASTE ONLY)	Actual Address of Final Destination (i.e. Final Recovery / Disposal Site (HAZARDOUS WASTE ONLY))	
						M/C/E	Method Used					
Within the Country	15 01 01	No	1696.64	paper and cardboard packaging	R3	M	Weighed	Offsite in Ireland	Agnail,TFS Broker IRE/AG117/11	Ballymacken Ind. Estate Ballymacken Portlaoise Laois,Ireland	BOC Gas Dublin, Bluebell,,Dublin 12,,Ireland	
Within the Country	15 01 01	No	16.02	paper and cardboard packaging	R3	M	Weighed	Offsite in Ireland	Greenstar Limited,W0053-03 Wicklow,,Ireland	Fassaroo,Bray,Co. Wicklow,,Ireland	Bluebell,,Dublin 12,,Ireland	
To Other Countries	15 01 01	No	22.56	paper and cardboard packaging	R3	M	Weighed	Abroad	Northwood Recycling Ltd,IRE/G282/15	Stockport Cheshire SK12 2HW,united kingdom		
To Other Countries	15 01 01	No	268.44	paper and cardboard packaging	R3	M	Weighed	Abroad	Huhtamaki (Bailey Waste Recycling NI) Ltd, TFS Broker IRE/AG032/11	Lurgan ,County Armagh BT16 7JH ,united kingdom		
To Other Countries	15 01 01	No	173.08	paper and cardboard packaging	R3	M	Weighed	Abroad	Mark Lyndon Paper Enterprises,IRE/G021/12	1AE, ,United Kingdom		
Within the Country	15 01 01	No	160.4	paper and cardboard packaging	R3	M	Weighed	Offsite in Ireland	Irish Packaging Recycling,W0263-01	Ballymount Road Walkinstown ,Dublin 12 ,Dublin, Ireland		
To Other Countries	15 01 01	No	696.72	paper and cardboard packaging	R3	M	Weighed	Abroad	Cellmark,TFS Broker IRE/G180/11	CellMark AB Lilla Bommen 3C P O Box 11927 SE-404 39 Gothenburg ,Sweden		
To Other Countries	15 01 01	No	1889.06	paper and cardboard packaging	R3	M	Weighed	Abroad	MLM (ACN Europe) Ltd, TFS Broker IRE/G022/11	MICR M20 ZDX, ,united kingdom		
Within the Country	15 01 01	No	439.46	paper and cardboard packaging	R3	M	Weighed	Offsite in Ireland	Materia Environment Ltd,IRE/AG161/17	House,Scilly,Kinsale,Cork,Ireland		
To Other Countries	15 01 01	No	601.88	paper and cardboard packaging	R3	M	Weighed	Abroad	Peute paper Recycling,IRE/G006/16	Veeplat 40,3313,LJ Dordrecht,Netherlands		
To Other Countries	15 01 01	No	162.82	paper and cardboard packaging	R3	M	Weighed	Abroad	Paper packaging Company,WWE/35/04	,,,Northern Ireland,United Kingdom		
To Other Countries	15 01 01	No	3104.26	paper and cardboard packaging	R3	M	Weighed	Abroad	Saica Natur UK Limited,IRE/G277/15	,,,,,United Kingdom		
Within the Country	15 01 01	No	400.2	paper and cardboard packaging	R3	M	Weighed	Offsite in Ireland	TRC Recycling Ltd,IRE/G385/15 VIPA LAUSANNE SA	TRC Recycling Ltd,IRE/G385/15 VIPA LAUSANNE SA	KMK Metals Recycling Limited,W0113-03	Cappincur Industrial Estate ,Daingean Road ,Tullamore , Co. Offaly,,ireland
To Other Countries	15 01 01	No	631.38	paper and cardboard packaging	R3	M	Weighed	Abroad	Broker's licence IRE/G195/17	Galeries Benjamin-Constant 1 ,1002 Lausanne , Switzerland , ,Switzerland		
Within the Country	15 01 02	No	96.6	plastic packaging	R3	M	Weighed	Offsite in Ireland	Materia Environment Ltd,IRE/AG161/17	House,Scilly,Kinsale,Cork,Ireland		
Within the Country	15 01 02	No	11.72	plastic packaging	R3	M	Weighed	Offsite in Ireland	TRC Recycling Ltd,IRE/G385/15	TRC Recycling Ltd,IRE/G385/15		
To Other Countries	15 01 02	No	45.74	plastic packaging	R3	M	Weighed	Abroad	WRC Recycling Ltd,IRE/G121/17	WRC Recycling Ltd,IRE/G121/17		
Within the Country	15 01 02	No	539.225	plastic packaging	R3	M	Weighed	Offsite in Ireland	Agnail,TFS Broker IRE/AG117/11	Portlaoise Laois,Ireland		
Within the Country	15 01 02	No	213.1	plastic packaging	R3	M	Weighed	Offsite in Ireland	Leinster Environmental/Eco WM Ltd ,WFP-LH-09-0004-01	Leinster Environmental/Eco WM Ltd ,WFP-LH-09-0004-01		
To Other Countries	15 01 02	No	45.86	plastic packaging	R3	M	Weighed	Abroad	Envirogreen Polymers,IRE/G418/16	Envirogreen Polymers,IRE/G418/16		
Within the Country	15 01 02	No	37.5	plastic packaging	R3	M	Weighed	Offsite in Ireland	Agnail,TFS Broker IRE/AG117/11	Portlaoise Laois,Ireland		
Within the Country	15 01 03	No	402.72	wooden packaging	R13	M	Weighed	Offsite in Ireland	Grey Stag T/A Euro Pallets Solutions,Meath	Sean Fox's Yard,Cookstey,The Ward,Co.Dublin,Ireland		
Within the Country	15 01 03	No	3.414	wooden packaging	R13	M	Weighed	Offsite in Ireland	Agnail,TFS Broker IRE/AG117/11	Portlaoise Laois,Ireland		
Within the Country	15 01 03	No	37.3	wooden packaging	R13	M	Weighed	Offsite in Ireland	Greenstar Limited,W0053-03	Fassaroo,Bray,Co. Wicklow,,Ireland		
Within the Country	15 01 04	No	2.8	metallic packaging	R4	M	Weighed	Offsite in Ireland	Multi Metals,WFP-WW-05-0014-01	Multi Metals,WFP-WW-05-0014-01		
Within the Country	15 01 06	No	2606.2	mixed packaging	R13	M	Weighed	Offsite in Ireland	Greenstar Limited,W0053-03	Fassaroo,Bray,Co. Wicklow,,Ireland	KMK Metals Recycling Ltd,W0113-03,Cappincur Industrial Estate, Daingean Road,Tullamore,Offaly,Ireland	

Within the Country	15 01 06	No	644.83 mixed packaging	R13	M	Weighed	Offsite in Ireland	Dublin City Council/Ballymount MRF (Merrywell),W0238-01	Merrywell Industrial Estate Ballymount Road Lower ,Ballymount ,Dublin 12 Dublin ,Ireland Nurendale (Rathdrinagh) ,Rathdrinagh ,Beauparc ,Navan County Meath ,Ireland Broughan ,The Ward ,Co. Dublin ,Ireland Fassaroe,Bray,Co. Wicklow ,Ireland Ballymacken Ind. Estate ,Ballymacken ,Portlaoise ,Laois,Ireland Broughan ,The Ward ,Co. Dublin ,Ireland Fassaroe,Bray,Co. Wicklow ,Ireland Ballymacken Ind. Estate	
Within the Country	15 01 06	No	21.56 mixed packaging	R13	M	Weighed	Offsite in Ireland	Panda,W0140-02		
Within the Country	16 05 04	Yes	gases in pressure containers (including 1.2 halons) containing dangerous substances	R4	M	Weighed	Offsite in Ireland	Abacus Fire & Safety,-		Abacus Fire & Safety,- Broughan ,The Ward ,Co. Dublin ,Ireland
Within the Country	17 01 01	No	24.6 concrete	R13	M	Weighed	Offsite in Ireland	Greenstar Limited,W0053-03		
Within the Country	17 02 03	No	14.78 plastic	R13	M	Weighed	Offsite in Ireland	Agnail,TFS Broker IRE/AG117/11		
Within the Country	17 02 03	No	13.9 plastic	R13	M	Weighed	Offsite in Ireland	Irish Packaging Recycling,W0263-01		
Within the Country	17 02 03	No	0.84 plastic	R13	M	Weighed	Offsite in Ireland	Materia Environment Ltd,IRE/AG161/17		
Within the Country	17 05 04	No	soil and stones other than those mentioned 2317.87 in 17 05 03	R13	M	Weighed	Offsite in Ireland	Breffni Group Plant Hire,WFP/MH/11/0003/01		
Within the Country	17 09 04	No	mixed construction and demolition wastes other than those mentioned in 17 09 01, 17 389.64 09 02 and 17 09 03	R13	M	Weighed	Offsite in Ireland	Greenstar Limited,W0053-03		Fassaroe,Bray,Co. Wicklow ,Ireland Nurendale (Rathdrinagh) ,Rathdrinagh ,Beauparc ,Navan County Meath ,Ireland Fassaroe,Bray,Co. Wicklow ,Ireland Lawlesstown ,Clonmel ,Co. Tipperary ,Ireland Nurendale (Rathdrinagh) ,Rathdrinagh ,Beauparc ,Navan County Meath ,Ireland Fassaroe,Bray,Co. Wicklow ,Ireland
Within the Country	17 09 04	No	mixed construction and demolition wastes other than those mentioned in 17 09 01, 17 1100.26 09 02 and 17 09 03	R13	M	Weighed	Offsite in Ireland	Panda,W0140-02		
Within the Country	19 12 07	No	12.59 wood other than that mentioned in 19 12 06	R13	M	Weighed	Offsite in Ireland	Greenstar Limited,W0053-03		
Within the Country	19 12 07	No	44.76 wood other than that mentioned in 19 12 06	R13	M	Weighed	Offsite in Ireland	Clonmel Waste Disposal Ltd ,WP-008-02		
Within the Country	19 12 07	No	13.6 wood other than that mentioned in 19 12 06	R13	M	Weighed	Offsite in Ireland	Panda,W0140-02		
Within the Country	19 12 09	No	28.64 minerals (for example sand, stones)	R13	M	Weighed	Offsite in Ireland	Greenstar Limited,W0053-03		
Within the Country	19 12 09	No	306.0 minerals (for example sand, stones)	R13	M	Weighed	Offsite in Ireland	Panda,W0140-02		
To Other Countries	19 12 09	No	105.39 minerals (for example sand, stones)	R13	M	Weighed	Abroad	Breffni Group Plant Hire,WFP/MH/11/0003/01		Nurendale (Rathdrinagh) ,Rathdrinagh ,Beauparc ,Navan County Meath ,Ireland Fassaroe,Bray,Co. Wicklow ,Ireland Nurendale (Rathdrinagh) ,Rathdrinagh ,Beauparc ,Navan County Meath ,Ireland Roadstone Mullaghchrone,....Meath,Ireland
Within the Country	19 12 10	No	53.12 combustible waste (refuse derived fuel)	R13	M	Weighed	Offsite in Ireland	Panda,W0140-02		
Within the Country	19 12 10	No	2963.779 combustible waste (refuse derived fuel)	R13	M	Weighed	Offsite in Ireland	Panda,W0140-02		
Within the Country	19 12 10	No	972.5 combustible waste (refuse derived fuel)	R1	M	Weighed	Offsite in Ireland	Lagan Cement,P0487-05		Kilashillen,Kinnegad,....Meath, Ireland Scotchtown ,Ballyconnell ,County Cavan,-,Ireland
Within the Country	19 12 10	No	52.26 combustible waste (refuse derived fuel) other wastes (including mixtures of materials) from mechanical treatment of wastes other than those mentioned in 19 12	R1	M	Weighed	Offsite in Ireland	Quinn Cement,P0378-02		
Within the Country	19 12 12	No	64.16 11 other wastes (including mixtures of materials) from mechanical treatment of wastes other than those mentioned in 19 12	R13	M	Weighed	Offsite in Ireland	Greenstar Limited,W0053-03		Fassaroe,Bray,Co. Wicklow ,Ireland Nurendale (Rathdrinagh) ,Rathdrinagh ,Beauparc ,Navan County Meath ,Ireland
Within the Country	19 12 12	No	386.36 11 other wastes (including mixtures of materials) from mechanical treatment of wastes other than those mentioned in 19 12	R13	M	Weighed	Offsite in Ireland	Panda,W0140-02		
Within the Country	19 12 12	No	76.02 11 other wastes (including mixtures of materials) from mechanical treatment of wastes other than those mentioned in 19 12	D5	M	Weighed	Offsite in Ireland	Bord na Mona, .W0201-03		Deild Landfill, ,Carbury,Co Kildare,Ireland
Within the Country	19 12 12	No	40.74 11 other wastes (including mixtures of materials) from mechanical treatment of wastes other than those mentioned in 19 12	R13	M	Weighed	Offsite in Ireland	Eco Mattress Recycling Ltd,WFP-DC-12-0032		133A,Glasnevin,Dublin,Dublin 11,Ireland
Within the Country	19 12 12	No	21.88 11 other wastes (including mixtures of materials) from mechanical treatment of wastes other than those mentioned in 19 12	R1	M	Weighed	Offsite in Ireland	Indaver WWMF,W0167-02		Carlanstown, ,Duleek,Co Meath,Ireland Nurendale (Rathdrinagh) ,Rathdrinagh ,Beauparc ,Navan County Meath ,Ireland
Within the Country	19 12 12	No	1981.62 11 other wastes (including mixtures of materials) from mechanical treatment of wastes other than those mentioned in 19 12	R13	M	Weighed	Offsite in Ireland	Panda,W0140-02		Waterside Disley ,Stockport ,Cheshire SK12 2HW,united kingdom Ballymount Road ,Walkinstown ,Dublin 12 ,Dublin ,Ireland Ballymacken Ind. Estate ,Ballymacken ,Portlaoise ,Laois,Ireland Waterside ,Disley ,Stockport ,Cheshire
To Other Countries	20 01 01	No	26.94 paper and cardboard	R13	M	Weighed	Abroad	Northwood Recycling Ltd,IRE/G282/15		SK12 2HW,united kingdom Ballymount Road ,Walkinstown ,Dublin 12 ,Dublin ,Ireland Ballymacken Ind. Estate ,Ballymacken ,Portlaoise ,Laois,Ireland Waterside ,Disley ,Stockport ,Cheshire
Within the Country	20 01 01	No	379.7 paper and cardboard	R13	M	Weighed	Offsite in Ireland	Irish Packaging Recycling,W0263-01		
Within the Country	20 01 01	No	5962.59 paper and cardboard	R13	M	Weighed	Offsite in Ireland	Agnail,TFS Broker IRE/AG117/11		
To Other Countries	20 01 01	No	3594.98 paper and cardboard	R13	M	Weighed	Abroad	Northwood Recycling Ltd,IRE/G282/15		SK12 2HW,united kingdom CellMark AB Lilla Bommen 3C P O Box 11927 ,SE-404 39 Gothenburg ,Sweden
To Other Countries	20 01 01	No	500.88 paper and cardboard	R13	M	Weighed	Abroad	Cellmark,TFS Broker IRE/G180/11		

To Other Countries	20 01 01	No	244.88 paper and cardboard	R13	M	Weighted	Abroad	Huhtamaki (Bailey Waste Recycling NI Ltd), TFS Broker IRE/AG032/11	Inn Road Dollystown Lurgan, County Armagh, BT66 7JN, United Kingdom, Egerton House, Towers Business Park, Wilmslow Rd, Didsbury, MCR M20 2DX, United Kingdom, Veeplaat 40,3313,LJ, Dordrecht, Netherlands,,Ireland
To Other Countries	20 01 01	No	1476.84 paper and cardboard	R13	M	Weighted	Abroad	MLM (ACN Europe) Ltd ,TFS Broker IRE/0022/11	Peute paper Recycling,IRE/G006/16 Solutions,IRE/G443/17 VIPA LAUSANNE SA
To Other Countries	20 01 01	No	1780.98 paper and cardboard	R13	M	Weighted	Abroad		
Within the Country	20 01 01	No	741.85 paper and cardboard	R13	M	Weighted	Offsite in Ireland		
To Other Countries	20 01 01	No	1944.8 paper and cardboard	R13	M	Weighted	Abroad		Galeries Benjamin-Constant 1, 1002 Lausanne, Switzerland, -,Switzerland
Within the Country	20 01 08	No	112.52 biodegradable kitchen and canteen waste	R13	M	Weighted	Offsite in Ireland	Nurendale Limited,W0261-02	Cappagh Road, Cappogue, Finglas, Dublin 11, Ireland
Within the Country	20 01 08	No	972.84 biodegradable kitchen and canteen waste	R3	M	Weighted	Offsite in Ireland	Clonmel Waste Disposal Ltd, WP-008-02	Lawlesstown, Clonmel, Co. Tipperary, Ireland
Within the Country	20 01 08	No	62.36 biodegradable kitchen and canteen waste	R3	M	Weighted	Offsite in Ireland	Envirogrind Ltd,WP0405	Donegal Road, Pettigo, Co. Donegal, Ireland, Ireland
Within the Country	20 01 38	No	1798.86 wood other than that mentioned in 20 01 37	R13	M	Weighted	Offsite in Ireland	Greenstar Limited,W0053-03	Fassano, Bray, Co. Wicklow, Ireland
Within the Country	20 01 38	No	373.5 wood other than that mentioned in 20 01 37	R13	M	Weighted	Offsite in Ireland	Panda,W0140-02	Nurendale (Rathdineagh), Rathdineagh, Beauparc, Navan County Meath, Ireland
Within the Country	20 01 38	No	340.94 wood other than that mentioned in 20 01 37	R3	M	Weighted	Offsite in Ireland	Clonmel Waste Disposal Ltd, WP-008-02	Lawlesstown, Clonmel, Co. Tipperary, Ireland
Within the Country	20 01 39	No	4.896 plastics	R13	M	Weighted	Offsite in Ireland	Agnal,TFS Broker IRE/AG117/11	Ballymacken Ind. Estate, Ballymacken, Portlaoise, Laois, Ireland
Within the Country	20 01 40	No	1323.0 metals	R4	M	Weighted	Offsite in Ireland	Multi Metals,WFP-WW-09-0014-01	...,Blessington,Co Wicklow, Ireland
Within the Country	20 02 01	No	1468.6 biodegradable waste	R3	M	Weighted	Offsite in Ireland	Enrich Environmental,WMP 2004/57	Knock, Co. Kildare,,Ireland
Within the Country	20 02 01	No	15.0 biodegradable waste	R3	M	Weighted	Offsite in Ireland	Envirogrind Ltd,WP0405	Donegal Road, Pettigo, Co. Donegal, Ireland, Ireland
Within the Country	20 02 01	No	53.39 biodegradable waste	R3	M	Weighted	Offsite in Ireland	Nurendale Limited,W0261-02	Cappagh Road, Cappogue, Finglas, Dublin 11, Ireland
Within the Country	20 03 01	No	872.18 mixed municipal waste	R13	M	Weighted	Offsite in Ireland	Greenstar Limited,W0053-03	Fassano, Bray, Co. Wicklow, Ireland
Within the Country	20 03 01	No	33.86 mixed municipal waste	R13	M	Weighted	Offsite in Ireland	Nurendale Limited,W0261-02	Cappagh Road, Cappogue, Finglas, Dublin 11, Ireland
Within the Country	20 03 01	No	4.8 mixed municipal waste	R13	M	Weighted	Offsite in Ireland	Panda,W0140-02	Nurendale (Rathdineagh), Rathdineagh, Beauparc, Navan County Meath, Ireland
Within the Country	20 03 01	No	746.62 mixed municipal waste	D5	M	Weighted	Offsite in Ireland	Bord na Mona, W0201-03	Drehid Landfill, Carbury, Co Kildare, Ireland
Within the Country	20 03 01	No	2224.36 mixed municipal waste	D5	M	Weighted	Offsite in Ireland	Ballynagran Landfill Ltd,W0165-02	Ballynagran, Coolbeg & Kicandra, Co. Wicklow, Ireland
Within the Country	20 03 01	No	118.93 mixed municipal waste	R13	M	Weighted	Offsite in Ireland	Dublin City Council/Ballymount MRF (Merrywell),W0238-01	Merrywell Industrial Estate, Ballymount Road Lower, Ballymount, Dublin 12, Dublin, Ireland
Within the Country	20 03 01	No	13247.4 mixed municipal waste	R1	M	Weighted	Offsite in Ireland	Indaver IWMF,W0167-02	Carlastown, Duleek, Co. Meath, Ireland
Within the Country	20 03 01	No	3739.32 mixed municipal waste	D5	M	Weighted	Offsite in Ireland	Knockharley Landfill Ltd,W0165-02	Ballynagran, Coolbeg & Kicandra, Co. Wicklow, Ireland
Within the Country	20 03 01	No	32.02 mixed municipal waste	R13	M	Weighted	Offsite in Ireland	Quality Recycling Ltd, NWCP0-12-11065-02	Unit 6 Rosehill Industrial Estate, Ballinacra, Midleton, Co. Cork, Ireland
To Other Countries	20 03 01	No	77.92 mixed municipal waste	R13	M	Weighted	Abroad	Re-Gen, -	Unit 7, Shepherds Drive, Carbane Industrial Estate, Newry BT35 6JQ, Co. Down, United Kingdom
Within the Country	20 03 01	No	21.4 mixed municipal waste	R13	M	Weighted	Offsite in Ireland	Agnal,TFS Broker IRE/AG117/11	Ballymacken Ind. Estate, Ballymacken, Portlaoise, Laois, Ireland
Within the Country	20 03 03	No	280.2 street-cleaning residues	D5	M	Weighted	Offsite in Ireland	Knockharley Landfill Ltd,W0165-02	Ballynagran, Coolbeg & Kicandra, Co. Wicklow, Ireland
Within the Country	20 03 07	No	14139.6 bulky waste	R13	M	Weighted	Offsite in Ireland	Greenstar Limited,W0053-03	Fassano, Bray, Co. Wicklow, Ireland
Within the Country	20 03 07	No	101.28 bulky waste	R13	M	Weighted	Offsite in Ireland	Panda,W0140-02	Nurendale (Rathdineagh), Rathdineagh, Beauparc, Navan County Meath, Ireland
Within the Country	20 03 07	No	33.62 bulky waste	D5	M	Weighted	Offsite in Ireland	Bord na Mona, W0201-03	Drehid Landfill, Carbury, Co Kildare, Ireland
Within the Country	20 03 07	No	24.78 bulky waste	D5	M	Weighted	Offsite in Ireland	Ballynagran Landfill Ltd,W0165-02	Ballynagran, Coolbeg & Kicandra, Co. Wicklow, Ireland
Within the Country	20 03 07	No	3.44 bulky waste	R13	M	Weighted	Offsite in Ireland	Eco Mattress Recycling Ltd,WFP-DC-12-0032	133A, Glasnevin, Dublin, Dublin 11, Ireland
Within the Country	20 03 07	No	6.78 bulky waste	R13	M	Weighted	Offsite in Ireland	Nurendale Limited,W0261-02	Cappagh Road, Cappogue, Finglas, Dublin 11, Ireland

* Select a row by double-clicking the Description of Waste then click the delete button



**CDM
Smith**[®]
cdmsmith.com