

# **Annual Environmental Report 2016**



**Clean (Irl) Refuse and Recycling Co.  
T/A Clean Ireland Recycling  
Ballinagun West  
Cree  
Co. Clare**

Grid Ref: R027660 R02702 66004

**W0253-01**

## Table of Contents

	<u>Item</u>	<u>Page</u>
1.0	Introduction	3
2.0	Waste Activities	4
3.0	Procedures	5
4.0	Emissions	6
5.0	Resource Consumption	6
6.0	Energy, Heat, Biogas and Compost	6
7.0	PRTR	7
8.0	Tank and pipeline testing inspection report	7
9.0	Reported Incidents Summary	7
10.0	Summary of development/infrastructural works	7
11.0	Financial provision, CRAMP (closure, restoration and aftercare management plan), ELRA (Environmental Liabilities Risk Assessment) and Environmental Liabilities . Statement of Measures	8
12.0	Management and Staffing Structure	8
13.0	Environmental Objectives and Targets and Environmental Management Programme	9
	Appendix A . Summary of Waste Accepted onsite in 2016	11
	Appendix B . Monitoring Results: Ambient Monitoring (Dust & Groundwater), Noise Monitoring, Storm water.	12
	Appendix C . Schedule of Objectives and Targets 2016 & 2017	15
	Appendix D . Copy of Pollution Release and Transfer Register (PRTR) 2016	18

## 1.0 Introduction

This is the 2016 Annual Environmental Report prepared for Clean Ireland Recycling's EPA waste licenced facility in Ballinagun West, Cree, Co.Clare. This report covers the period from the 1<sup>st</sup> January 2016 to the 31<sup>st</sup> of December 2016. This report has been prepared with reference to the EPA AER draft guidance document V3.0 Dec13. The contents of this report are as required in Schedule F of W0253-01:

## SCHEDULE F: Annual Environmental Report

<b>Annual Environmental Report Content</b> <sup>Note 1</sup>
Reporting Period.
Waste activities carried out at the facility.
Quantity and composition of waste recovered, received and disposed of during the reporting period and each previous year (relevant EWC codes to be used).
Waste recovery report.
Full title and a written summary of any procedures developed by the licensee in the year which relates to the facility operation.
Emissions from the facility.
Waste management record.
Resource consumption summary.
Energy and heat generation summary.
Use of biogas flare and biogas venting summary.
Complaints summary.
Schedule of Environmental Objectives and Targets.
Environmental management programme – report for previous year.
Environmental management programme – proposal for current year.
Pollutant Release and Transfer Register – report for previous year.
Pollutant Release and transfer Register – proposal for current year.
Noise monitoring report summary.
Ambient monitoring summary.
Tank and pipeline testing and inspection report.
Reported incidents summary.
Energy efficiency audit report summary.
Report on the assessment of the efficiency of use of raw materials in processes and the reduction in waste generated.
Report on progress made and proposals being developed to minimise water demand and the volume of trade effluent discharges.
Development/Infrastructural works summary (completed in previous year or prepared for current year).
Reports on financial provision made under this licence, management and staffing structure of the facility, and a programme for public information.
Closure, restoration & aftercare management Plan.
Statement of measures in relation to prevention of environmental damage and remedial actions (Environmental Liabilities).
Environmental Liabilities Risk Assessment Review (every three years or more frequently as dictated by relevant on-site change including financial provisions).
Achievement of compost quality standards.
Destination and uses of compost produced.
Any other items specified by the Agency.

**Note 1:** Content may be revised subject to the agreement of the Agency.

## 2.0 Waste Activities 2016

Operations at the facility include the receipt of domestic, commercial, industrial and construction waste, which is sorted and segregated for onward recycling / recovery in accordance with the recycling potential. Waste deemed unsuitable for recycling / recovery is segregated and compacted for disposal off-site.

The main waste types processed at the facility include:

- Mixed residual waste (including compostable waste)
- Dry recyclables (including segregated recyclables)
- Construction and Demolition (C&D) Waste
- Timber waste

The main waste activities on site include:

- Mechanical treatment of mixed recyclable waste
- Mechanical treatment and baling of mixed residual waste
- Mechanical treatment of C&D waste

The facility processes non-hazardous waste only.

Details of the quantities and types of waste accepted onsite in 2016 are included in Appendix A. Details of the quantities and types of waste dispatched from site in 2016 are included in Appendix D as part of the PRTR.

## 2.1 Waste Recovery Report

Clean Ireland Recycling's facility in Cree makes a significant contribution to the achievement of waste recovery objectives and National and European waste recovery policies. As per condition 11.14 details of the tonnage of metals, C&D waste, biowaste, organic fines and other recyclables are included in the PRTR in Appendix D.

### 2.1.1 Recovery of Metals

Clean Ireland Recycling provides for the collection of source segregated metals primarily from construction sites and metal packaging from civic amenity sites. Source segregated metals are kept separate from other wastes to ensure maximum recycling potential. Metals are recovered mechanically from mixed C&D and bulky waste skips. Metals are also removed from the residual waste by means of a magnet prior to baling of the waste. All metals are bulked for transport to authorised facilities for further processing.

### 2.1.2 Recovery of C&D derived waste material

Clean Ireland Recycling provides for the collection of source segregated C&D waste primarily from construction sites. Source segregated C&D waste is kept separate from other wastes to ensure maximum recycling potential. C&D waste streams are also recovered mechanically from mixed C&D skip waste and bulky waste skips. Timber, metals, gypsum and other recyclables are separated from C&D waste for recycling. Mixed C&D waste is separated into separate fractions using a trommel, magnet, picking line, wind shifter etc. C&D fines are dispatched from site for use as landfill cover. Other fractions are bulked onsite prior to being dispatched from site to suitably authorised facilities for further recycling.

### 2.1.3 Biowaste and Organic fines

Food waste is collected as a source segregated fraction from domestic and commercial customers. The majority of this waste is bulked for transfer through Clean Ireland Recycling's Waste Permitted Facility in Shannon with smaller quantities transferred through the Cree facility. Clean Ireland Recycling encourages all customers to avail of the kerbside food waste collection. Food bins are actively monitored for contamination. Clean Ireland Recycling operates a pricing structure which encourages the source segregation of food waste. All food waste is kept separate and dispatched to authorised anaerobic digestion or composting facilities for further treatment and recovery. In the latter part of 2016 a trial process was carried out to remove organic fines from the residual waste. Using a mobile trommel, organic fines were removed from the residual waste received onsite prior to baling for export. This process was implemented to improve the calorific value of the baled residual waste for export under TFS to a waste to energy facility. Organic fines are bulked onsite for transfer to an authorised composting facility where the material is stabilised prior to use as landfill cover.

### 2.1.4 Other recyclable materials

Other recyclables are accepted/collected and transferred through the Cree facility. Recyclables include cardboard, paper, plastics, mixed dry recyclables, WEEE, cartridges, batteries and fluorescent tubes. Source segregated cardboard, paper and plastics are baled onsite and stored prior to dispatch for further processing/recycling. Mixed dry recyclables are bulked prior to dispatch for further segregation, processing and recycling. Recyclable materials are removed from skip waste where possible for recycling.

### 2.1.5 ELVs and Biogas

No end-of-life vehicles are currently accepted onsite. The proposed biogas production process has not been developed at the facility.

## 2.2 Waste Management Record

Waste produced from activities onsite is minimal. It includes source segregated recyclables, food and residual waste from the office and canteen. Leachate from the bale storage shed is collected in a bunded tank and dispatched from site as required to an authorised facility for treatment. Details of the quantities are included in the PRTR in Appendix D.

## 3.0 Procedures

Procedures relating to the facility operation are maintained as part of the company wide ISO certified EQHS integrated management system.

The following procedures were developed or amended in 2016:

Ref	Date	Title	Summary
COP05	19.01.16	Changing Emptying split/ skip containers on Truck in Cree	The purpose of this procedure is to define appropriate method for changing emptying of splits and skips occurring at the Clean Ireland Recycling Facility Cree.
COP17	26.04.16	Shunter operations in Cree yard	The purpose of this procedure is to define the appropriate method for Shunter operations occurring at the Clean Ireland Recycling Facility.
COP18	14.01.16	Lock up procedure for Cree	To detail a procedure for the Lock up of Cree office/site
COP19	05.10.16	Method for Loading 40 foot container For Paper and OCC	The purpose of this procedure is to define appropriate method for loading of 40 foot containers for paper and OCC at the Clean Ireland Recycling Facility

#### 4.0 Emissions from the Facility

Details of emissions from the facility are included in the PRTR in Appendix D and monitoring results are included in appendix B.

#### 5.0 Resource Consumption Summary

The following table summarises the resources used onsite in 2016.

Resource	Usage 2016
Electricity	341609kWh
Public Water	188m3
Well Water	1700m3
Woodchip	6 tonnes
White Diesel	15600 litres
Green Diesel	422556 litres

These resources represent the majority of the raw materials used in the operation of the facility. Improvements have been made in the efficiency of the lighting in use onsite to reduce electricity consumption. All vehicles and equipment are maintained regularly on a scheduled basis as part of the integrated management system. This ensures all machinery and plant is operating efficiently. Older machines are replaced with newer more efficient ones as required. We have noticed a significant increase in the use of electricity since our negative air odour abatement system was installed and operational. This was expected.

##### 5.1 Report on progress to minimise water demand and volume of trade effluent discharges.

Water demand: There is rain water harvesting for the supply of fire water onsite and water for the toilets.

Trade effluent: Discharges to the Puraflow water treatment unit are dependent on the number of employees/contractors using the canteen and toilet facilities. The generation of leachate from the bale shed has been reduced by the efficient use of water during cleaning and the removal of organic fines from the residual waste prior to baling. Truck washing has been relocated to the Clean Ireland Recycling waste permitted facility/truck depot in Shannon. At this facility wash water can be directed to sewer for treatment. An Irish water discharge licence is in place for the Shannon facility.

#### 6.0 Energy, Heat, Biogas and Compost

##### 6.1 Energy and heat generation summary

There is a wood pellet boiler onsite for the provision of heat for the canteen and offices. No heat or energy is generated from waste.

##### 6.2 Biogas

There is currently no biogas produced onsite. There is no biogas flare or venting in use.

##### 6.3 Compost . Quality Standards and Destinations

No compost is currently being produced onsite. The destinations for organic wastes dispatched from the facility are detailed in the PRTR in Appendix D.

## 6.4 Energy efficiency audit report summary

A company wide Energy Audit Report was carried out in November 2015 in compliance with European Union's Energy Efficiency Directive, 2012/27/EU and Irish Statutory Instrument S.I. No. 426 of 2014. This included an assessment of the energy usage at the Cree facility and identified opportunities for reductions in energy usage. These recommendations have been taken into account in the management and future development of the facility.

## 7.0 Pollutant Release and Transfer Register (PRTR)

The PRTR for 2016 has been submitted via the dedicated EPA online portal as required. A copy of the spreadsheet submitted has been included in Appendix D. It is proposed that the quantities will be similar for 2017. Tonnages of waste transferred through the facility have increased due to increased customer requirements for waste recovery, disposal and recycling.

## 8.0 Tank and Pipeline testing and inspection report

The following sumps, bunds and tanks have all been tested and passed inspection. Testing is due every three years. The next test is due in September 2017.

1. **Concrete Bund** - Oil Bund - Tested 7108/15 to 13/08/15
2. **Concrete Sump** - Leachate Sump - Tested 15/06/15 to 16/06/15
3. **Concrete Bund** - Leachate Tank Bund - 29/09/14 to 1/10/14
4. **Double skinned plastic** - C&D Generator Diesel Tank - inspected 29/09/15
5. **Double skinned plastic** - Municipal Waste Shed Diesel Tank - inspected 29/09/15

## 9.0 Reported Incidents Summary

### Summary of reported incidents in 2016

Incident No.	Incident Nature	Category	Incident Date	Details
INCI011668	Other	1. Minor	29/09/16	GW1: pH of 4.2 (outside limit of pH 6-9)
INCI011514	Trigger Level Reached	1. Minor	30/11/16	SW-1: Ammonia as N 0.37mg/l (trigger limit of 0.14mg/l) SW-2: Ammonia as N 0.61mg/l (trigger limit of 0.14mg/l) SW-2: Suspended Solids 27mg/l (trigger limit of 25mg/l)
INCI010832	Trigger Level Reached	1. Minor	07/08/16	SW-2: Ammonia as N 1.4mg/l (trigger limit of 0.14mg/l) SW 2: Suspended Solids 30mg/l (trigger limit of 25mg/l)
INCI010557	Trigger Level Reached	1. Minor	16/02/16	GW1: pH of 3.88 (outside limit of pH 6-9)
INCI009958	Trigger Level Reached	1. Minor	15/02/16	SW-1: Ammonia as N 0.49mg/l (trigger limit of 0.14mg/l) SW-2: BOD 6mg/l (trigger limit of 2.6mg/l) SW-2: Ammonia as N 0.70mg/l (trigger limit of 0.14mg/l)

Incidents were reported relating to exceedance of emission limit for pH at GW1. This monitoring point is the sample chamber from the Puraflow waste water treatment unit prior to the polishing filter. This unit is used to treat the waste water from the offices and canteen onsite and is not connected with waste processing activities onsite. It is thought that the low pH result may be due to a fault with the unit or the use of acidic cleaning products. This is currently under investigation and should be rectified early in 2017. The other incidents relate to storm water monitoring results which reached trigger levels for ammonia, suspended solids and/or BOD. Investigations have been undertaken to address any contamination of storm water and improvements have been made to waste handling procedures onsite. Improvements to the storm water infrastructure are also under consideration. The trigger levels set for the site are comparatively low and may be revised upwards in the future with the agreement of the EPA.

There were no complaints received in 2016.

## 10.0 Summary of development/Infrastructural works

In 2016 an air exchange odour abatement system was installed and commissioned.

### 11.0 Financial provision, CRAMP (closure, restoration and aftercare management plan), ELRA (Environmental Liabilities Risk Assessment) and Environmental Liabilities – Statement of Measures

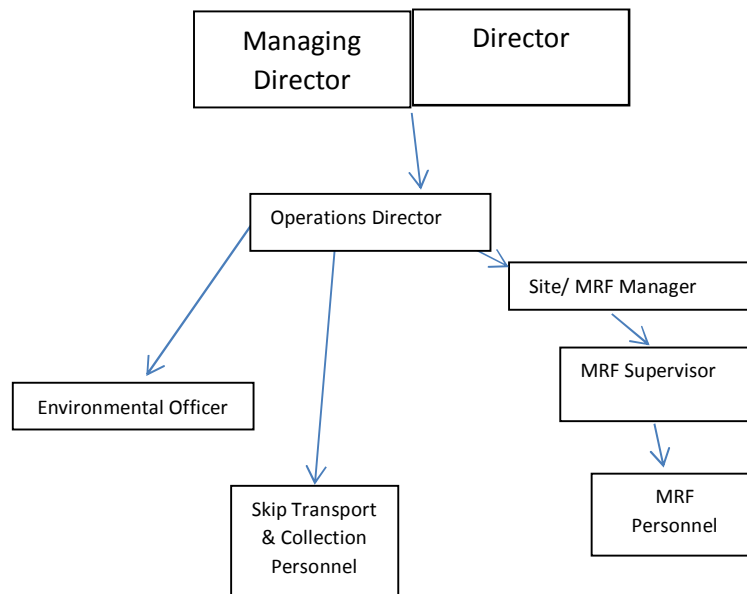
The Closure, restoration and aftercare management plan/decommissioning management plan (DMP) was submitted via EDEN system to the EPA on the 01/03/2017 for approval. The ELRA is due to be finalised and submitted in March 2017. Following EPA approval of the above, suitable financial provisions will be made for the agreed amount. As required by Technical Amendment A, a fire risk assessment and waste storage plan have also been prepared and submitted to the agency.

#### 11.1 Statement of measures in relation to the prevention of environmental damage and remedial actions

Possible Risk	Prevention Measures
Fire Fire water	<ul style="list-style-type: none"> <li>• Staff fire training,</li> <li>• Operating procedures</li> <li>• Maintenance schedule</li> <li>• Staff training</li> <li>• Liaison with fire services . good site knowledge</li> <li>• Fire Alarms</li> <li>• Alarm monitoring</li> <li>• Firefighting training</li> <li>• Firefighting equipment</li> <li>• Emergency response procedures</li> <li>• Shut off valves</li> </ul>
Water contamination	<ul style="list-style-type: none"> <li>• Regular monitoring</li> <li>• Good housekeeping</li> <li>• Waste processing and storage indoors</li> <li>• Sealed vehicles and containers</li> <li>• Spill kits</li> <li>• Shut off valves</li> </ul>
Air contamination	<ul style="list-style-type: none"> <li>• Good housekeeping</li> <li>• Waste processing and storage indoors</li> <li>• Odour abatement system</li> <li>• Dust suppression if required</li> </ul>
Malicious damage	<ul style="list-style-type: none"> <li>• Fencing</li> <li>• Security cameras</li> <li>• Remote monitoring</li> <li>• Emergency response procedures</li> </ul>



## 12. Management and Staffing Structure



## 13. Environmental Objectives and Targets and Environmental Management Programme

The Environmental Objectives and Targets for 2016 and 2017 are included in Appendix C. The objectives and targets include the details of the Environmental Management Programme with the timeframe, responsibility and means to achieve targets as per condition 2.2.2.3. The 2016 Objectives and Targets includes details of the progress achieved in 2016.



**Appendices**

Appendix A . Summary of Waste Accepted onsite in 2016

Appendix B . Monitoring Results: Ambient Monitoring (Dust & Groundwater), Noise Monitoring, Storm water.

Appendix C . Schedule of Objectives and Targets 2016 & 2017

Appendix D . Copy of Pollution Release and Transfer Register (PRTR) 2016

## Appendix A . Summary of Waste Accepted onsite in 2016 &amp; 2015

LoW Code	Waste Description	Tonnage 2016	Tonnage 2015
150104	Aluminium Cans	2.48	1.44
200201	Brown Bin Waste	880.345	906.61
200307	Bulky	2671.71	2670.815
170411	Cable	0.38	1.54
150101	Cardboard	709.05	1494.05
80318	Cartridges	1.69	0.62
191210	Combustible Waste (RDF)	0	869.39
191212	Combustible Waste (RDF)	4183.152	0
191204	Clear film	11.24	0
200201	Garden Waste	57.6	39.78
170802	Gypsum	51.58	0
170203	Hard Plastic	153.48	140.14
200139	HDPE Bottles	4.72	17.12
200307	Mattresses	66.796	60.24
170407	Metal from C&D Sites	28.22	61.88
170904	Mixed C&D	521.46	444.35
170107	Mixed Concrete and Bricks	98.72	69.3
200301	Mixed Dry Recyclables	8199.597	8238.75
150107	mixed Glass	198.13	450.14
200140	Mixed Metal	25.1	58.54
200139	Mixed Plastic Bottles	266.72	161.95
200301	Mixed Waste	33197.043	29597.552
200101	Paper	2049.493	1639.58
200101	Paper Shredding	16.64	12.35
200139	PET Bottles	6.39	17.08
170802	Plasterboard	0.1	29
200139	Plastic Film	0	5.16
150102	Plastic Film	0.48	0
200102	Plate Glass	61.48	56.3
200139	Polyethylene	2.34	0.9
190801	TP Screenings	20	0
200136	WEEE	8.55	5.22
191207	Wood Chip	0	0
170201	Wood from C&D Sites	882.63	869.52
200301	Sludge	0	31.32
150102	Polystrene	9.22	3.25
170201	Low Grade Timber	0	35.38
170407	Light Steel	216.48	0.22
191209	Inert Soil and Stone	1.8	19.3
200108	CAT3	6.36	1.665
200201	Biodegradeable waste	0	6.1
200138	Wood	96.86	67.45
TOTAL Waste Accepted		54708.036	48084.002

## Appendix B . Monitoring Results: Ambient Monitoring (Dust & Groundwater), Noise Monitoring, Storm water.

### Dust Monitoring Results W0253-01 2016

Depositional Dust							
Report No.	Date up	Date down	D-1	D-2	D-3	D-4	D-5
			mg/m2/day				
ECS5238-Qtr1	24/02/2016	23/03/2016	53	208	65	148	101
ECS5238-Qtr2	12/04/2016	11/05/2016	63	218	98	189	149
ECS5238-Qtr3	07/07/2016	09/08/2016	73	141	193	678	156
ECS5238-Qtr4	29/09/2016	02/11/2016	122	182	197	213	147

### Groundwater Monitoring Results W0253-01 2016

Parameter	Units		Well Borehole		Well Borehole
		GW-1		GW-1	
		From Puraflo System prior to percolation	Deep well at gate entrance	From Puraflo System prior to percolation	Deep well at gate entrance
		16/02/2016	16/02/2016	30/09/2016	30/09/2016
Color	-	Brown	Clear		
Solids	-	None	None	None	None
Odour	-	None	None	None	None
pH	pH units	3.88 ***	7.1	4.2	7.5
NH3-N	mg/l	15	0.81	24	0.82
BOD	mg/l O2	<2	<2	<2	3
COD	mg/l O2	35	<10	62	13
Conductivity @ 25°C	µS/cm	795	689	915	735
Suspended solids	mg/l	<5	<5	<5	<5
Total Nitrogen	mg/l	76	1	79	<1
P04-P	mg/l	6.4	<0.16	11	<0.01
Chloride	mg/l	86	38	75	38
Fluoride	mg/l	0.17	<0.1	0.37	<0.01
N03-N	mg/l	52	<0.04	54	<0.04

**Noise Monitoring Results W0253-01 2016**

Quarterly Noise Monitoring Clean Ireland				ECS5238			
				Qtr1	Qtr2	Qtr3	Qtr 4
				15/02/16 & 23/03/16	12/04/16 & 11/05/16	09/08/2016	30/11/2016
Day Time Noise Monitoring 7am to 7pm	Licence Limit 55dB(A)	Location	Duration	LA <sub>eq</sub>	LA <sub>eq</sub>	LA <sub>eq</sub>	LA <sub>eq</sub>
				dB(A)	dB(A)	dB(A)	dB(A)
	NSL-1	30 min	53	52	48	50	
		30 min	53	51	51	53	
		30 min	52	49	51	50	
	NSL-2	30 min	62	56	55	52	
		30 min	60	56	49	44	
		30 min	55	56	53	49	
	NSL-3	30 min	45	43	47	42	
		30 min	55	43	50	44	
30 min		43	45	45	43		
Evening Time 7pm to 11pm	Licence 50dB(A)	NSL-1	30 min	47	47	49	49
		NSL-2	30 min	56	56	46	44
		NSL-3	30 min	41	44	41	41

**Storm Water Monitoring Results W0253-01 2016**

SW 1 Parameter	Units	Qtr1	Qtr 2	Qtr 3	Qtr 4
		15/02/16	12/04/16	09/08/16	30/11/16
		ECS5238	ECS5238	ECS5238	ECS5238
Visual	Colour	Clear	Clear	Clear	Clear
	Solids	None	None	None	Some
	Odour	None	None	None	None
pH result	pH units	7.6	7.8	8	8
Conductivity @ 25°C	µS/cm	600	670	798	750
SW-1 Suspended solids	mg/l	<5	<5	<5	5
SW-1 BOD	mg/l O <sub>2</sub>	<2	7	2	<2
COD	mg/l O <sub>2</sub>	19	12	29	23
SW-1 NH <sub>3</sub> -N	mg/l	0.49	0.34	<0.02	0.37
Sulphate	mg/l	78	40	130	92
Total Nitrogen	mg/l	2	1.5	1.6	1.4
Mineral Oil**	µg/l	<10	<10	<10	<10

SW 2 Parameter	Units	Qtr1	Qtr 2	Qtr 3	Qtr 4
		15/02/16	12/04/16	09/08/16	30/11/16
		ECS5238	ECS5238	ECS5238	ECS5238
Visual	Colour	Clear	Clear	V. Pale Yellow	Clear
	Solids	V. Few	V. Few	V. Few	Some
	Odour	None	None	Faint	None
pH result	<i>pH units</i>	6.5	6.6	6.8	7
Conductivity @ 25°C	<i>µS/cm</i>	565	671	584	637
SW-2 Suspended solids	<i>mg/l</i>	19	27	30	27
SW-2 BOD	<i>mg/l O2</i>	6	10	<2	2
COD	<i>mg/l O2</i>	25	23	30	51
SW-2 NH3-N	<i>mg/l</i>	0.7	0.61	1.4	0.61
Sulphate	<i>mg/l</i>	94	75	64	70
Total Nitrogen	<i>mg/l</i>	1	1.4	1.4	2
Mineral Oil**	<i>µg/l</i>	<10	<10	<10	<10

## Appendix C . Schedule of Objectives and Targets 2016 & 2017



## Environmental Objectives and Targets 2016 as required by Condition 2.2.2.2 of EPA Waste Licence W0253-01

Ref No.	Objective	Target	Status (% completed)		How target are progressed	Responsibility	The time within which they may be achieved	Comments/Progress
1	Environmental Management System	Continued roll out Environmental Management System	Ongoing	100%	Ongoing review of procedures, documentation, objectives & targets, records, training to ISO standards	Environmental Officer	ongoing	Completed maintain and update as required.
2	Environmental Training & Awareness	To ensure that key employees are made aware of conditions set out in EPA Licence W0253-01 and the requirements set out in the Environmental Management System	Ongoing	100%	Identify environmental training needs of all employees. Continue internal training programme and assessment of training needs for all operational staff	Facility Manager/ Environmental Officer	Ongoing	Continual training and revision of training. New employees trained. Deputy Facility Manager attended Facility Management Training.
3	Plant and Vehicle Maintenance Programme	Establish and maintain a programme for maintenance of all plant and equipment as per Condition 2.2.2.8 of Waste Licence	Ongoing	90%	Documented maintenance programme. Scheduled maintenance to be put in place	Maintenance Team	Q1 17	Maintenance plan in place. Scheduled maintenance has been agreed with relevant contractors.
4	Annual Review	Management Team to review compliance with licence conditions, EMS, Improvements and Objective & Targets set out.	Ongoing	100%	Review environmental performance of the facility	Management/ Environmental Officer	ongoing	Environmental Review Meeting held in September 07/10/16
5	Environmental Monitoring	As per Waste Licence: Should any limits be exceeded, corrective actions to be implemented.	Ongoing	75%	Continue to monitor emissions from site and investigate any exceedance of trigger levels	Environmental Officer	Ongoing	Discussed at Mangement meeting Nov 2016. Discussed with EPA in Cork.
6	Specific engineering works. Construction and Demolition Waste Recovery Area	Relocate skip processing area to former MDR storage building	Ongoing	100%	Move process and equipment	Management	Summer 2016	Reception and sorting area has been moved to an existing covered shed.

7	Surface Water Management	Install manual Shut-off valves on surface/wastewater discharge drains. ID the valves at location.	Ongoing	20%	Procurement of 3 quotations following by instalation	Management	Ongoing	Drainage plan submitted to EPA for approval.
8		Develop procedures for manual shut down of valves. Include in EMS and training records.	Ongoing	20%	Following instalation of valves	Management	Ongoing	Drianage plan submitted to EPA for approval.
9		Upgrade drainage system and the diversion of roof storm water directly to stream	Ongoing	20%	Review of site drainage	Management/ Environmental Officer	Ongoing	New /possible drainage being investigated meeting 17/11/16
10		Review progress against stormwater trigger values from yard runoff and detail action items to reduce at source	Ongoing	0%	On review of quarterly monitoring report	Management/ Environmental Officer	Ongoing	Drianage plan submitted to EPA for approval.
11	Silt Traps and Oil Separators	Purchase and install interceptors	Ongoing	20%	Engineer to calculate the area minus the roof area. Details to be furnished to suppliers for procurement of interceptors	Management/ Environmental Officer	Ongoing	Drianage plan submitted to EPA for approval.
12	Purchase weather system	Weather Monitoring Station as per Condition 3.23 of Waste Licence	Ongoing	5%	Identify appropriate weather station Agree location with the Agency	Environmental Officer	On hold	On hold
13	Additional improvements	Carry out Assessment of Fire-water Retention	Ongoing	0%	Anua have been contracted to complete this report	Management		Awaiting EPA agreement on drainage plan and extension. Also ref meeting 17/11/16 review plans. Plans discussed with Engineer.
14	Bund and drainage (including foul) integrity Testing	Carry out integrity testing on all underground tanks and pipes in accordance with Condition 6.10 of Waste Licence	Ongoing	100%	Undertake programme of integrity testing. Schedule testing for integrity testing. To be carried out at three year intervals	ANUA	ongoing	Bund testing completed 2015

15	Noise Management Programme	Prepare programme in accordance with Condition 6.13 of Waste Licence.	Ongoing	50%	Prepare programme based on findings of Noise Surveys Review annually	Environmental Officer	Mar-17	To be completed 2017.
16	Energy Efficiency/Utility conservation	To carry out an Energy Efficiency Audit in accordance with Condition 7.1 of Waste Licence	Ongoing	100%	Carry out an Energy Efficiency Audit Repeated at intervals as required by the Agency	Management	Ongoing for 2017	Audit Completed, Some lighting has been upgraded. New compressor purchased to replace inefficient one as highlighted in the audit report. Other items highlighted to be addressed in 2017
17	Energy Efficiency/Utility conservation	Reduce water consumption onsite	Ongoing	100%	To examine the feasibility of capturing rainwater from the roof of the facility. Select suitable methods of capturing rainwater and containers for same.	Management/ Environmental Officer	Complete	1) Tank installed in the woodchip boiler room that will store water for use in toilets. 2) Two 35000 Litres tanks in place on bank beside dry recycling shed which can be used for firefighting or if require for cleaning down equipment 3) Installation of a pump in on site borehole with a view to using this water for firefighting and for spraying facility when required to minimise airborne dust nuisance.
18	Closure Plan	Prepare Decommissioning Management Plan (DMP) as per Condition 10.2 of Waste Licence	Ongoing	60%	Review annually and submit as part of AER	Management	Q4 16	Costings have been submitted to finance dept.
19	ELRA	Prepare Environmental Liabilities Risk Assessment as per Condition 12.2 of Waste Licence	Ongoing	60%	Review every three year and submit as part of AER	Management	Q1 17	Currently ongoing
20	Bunding	Review the food waste storage location and requirement for bund integrity testing	Ongoing	100%	Review every three year and submit as part of AER	Anua	Complete 15	now stored in sealed trailers

### Environmental Objectives and Targets 2017 as required by Condition 2.2.2.2 of EPA Waste Licence W0253-01

Ref No.	Objective	Target	Status (% completed)		How target are progressed	Responsibility	The time within which they may be achieved	Comments/Progress
1	Environmental Management System	Continued roll out Environmental Management System	Ongoing	100%	Ongoing review of precedures, documentation, objectives & targets, records, training to ISO standards	Environmental Officer	ongoing	
2	Environmental Training & Awareness	To ensure that key employees are made aware of conditions set out in EPA Licence W0253-01 and the requirements set out in the Environmental Management System. All site staff to be trained in relation to Fire Risk Assessment and Storage Plan.	Ongoing	100%	Identify environmental training needs of all employees. Continue internal training programme and assessment of training needs for all operational staff	Facility Manager/ Environmental Officer	Ongoing	
3	Plant and Vehicle Maintenance Programme	Establish and maintain a programme for maintenance of all plant and equipment as per Condition 2.2.2.8 of Waste Licence	Ongoing	90%	Documented maintenance programme to be updated as required. Development of spare parts stock.	Maintenance Team	Q1 17	
4	Annual Review	Management Team to review compliance with licence conditions, EMS,Improvements and Objective & Targets set out.	Ongoing	10%	Review environmental performance of the facility	Management/ Environmental Officer	ongoing	
5	Environmental Monitoring	As per Waste Licence: Should any limits be exceeded, corrective actions to be implemented.	Ongoing	75%	Continue to monitor emissions from site and investigate any exceedance of trigger levels. Agree new service contract for monitoring.	Environmental Officer	Ongoing	
7	Surface Water Management	Install manual Shut-off valves on surface/wastewater discharge drains. ID the valves at location.	Ongoing	20%	Procurement of 3 quotations following by instalation	Management	Ongoing	Drainage plan submitted to EPA for approval.
8		Develop procedures for manual shut down of valves. Include in EMS and training records.	Ongoing	20%	Following instalation of valves	Management	Ongoing	Drainage plan submitted to EPA for approval.
9		Upgrade drainage system and the diversion of roof storm water directly to stream	Ongoing	20%	Review of site drainage	Management/ Environmental Officer	Ongoing	New /possible drainage being investigated meeting 17/11/16
10		Review progress against stormwater trigger values from yard runoff and detail action items to reduce at source	Ongoing	0%	On review of quarterly monitoring report	Management/ Environmental Officer	Ongoing	Drainage plan submitted to EPA for approval.

11	Silt Traps and Oil Separators	Purchase and install interceptors	Ongoing	20%	Engineer to calculate the area minus the roof area. Details to be furnished to suppliers for procurement of interceptors	Management/ Environmental Officer	Ongoing	Drainage plan submitted to EPA for approval.
12	Weather system	Compliance Re Weather Monitoring Station as per Condition 3.23 of Waste Licence	Ongoing	50%	Following discussion with EPA send notification for approval of intention not to install weather system	Environmental Officer	Q1 17	
13	Additional improvements	As per licence amendment Assessment of Fire-water Retention to be included in fire plan.	Ongoing	20%	Appoint consultants	Management		
14	Bund and drainage (including foul) integrity Testing	Carry out integrity testing on all underground tanks and pipes in accordance with Condition 6.10 of Waste Licence	Ongoing	50%	Organise 2018 testing.	Environmental Officer		Bund testing completed 2015
15	Noise Management Programme	Prepare programme in accordance with Condition 6.13 of Waste Licence.	Ongoing	50%	Review programme based on findings of Noise Surveys Review annually	Environmental Officer	Mar-17	
16	Energy Efficiency/Utility conservation	Improve energy efficiency of equipment on site.	Ongoing	70%	Continue upgrading items highlighted in Energy Audit. Efficiency to be considered during purchasing.	Facility Manager	Ongoing	
18	Closure Plan	Prepare Decommissioning Management Plan (DMP) as per Condition 10.2 of Waste Licence	Ongoing	80%	Finalise Report. Review annually and submit as part of AER	Management	Q1 17	
19	ELRA	Prepare Environmental Liabilities Risk Assessment as per Condition 12.2 of Waste Licence	Ongoing	80%	Finalise Report. Review every three year and submit as part of AER	Management	Q1 17	



[Guidance to completing the PRTR workbook](#)

# PRTR Returns Workbook

Version 1.1.19

<b>REFERENCE YEAR</b>	2016
-----------------------	------

## 1. FACILITY IDENTIFICATION

Parent Company Name	Clean (Irl) Refuse & Recycling Co
Facility Name	Clean (Irl) Refuse & Recycling Co.
PRTR Identification Number	W0253
Licence Number	W0253-01

### Classes of Activity

No.	class_name
-	Refer to PRTR class activities below

Address 1	Ballinagun West
Address 2	Cree
Address 3	County Clare
Address 4	
	Clare
Country	Ireland
Coordinates of Location	-9.44066409300 52.73670466900
River Basin District	IEGBNISH
NACE Code	3832
Main Economic Activity	Recovery of sorted materials
<b>AER Returns Contact Name</b>	Joanna Gammell
<b>AER Returns Contact Email Address</b>	ggammell@cleanirl.com
<b>AER Returns Contact Position</b>	Environmental Officer
<b>AER Returns Contact Telephone Number</b>	0656706500
<b>AER Returns Contact Mobile Phone Number</b>	
<b>AER Returns Contact Fax Number</b>	061363509
<b>Production Volume</b>	0.0
<b>Production Volume Units</b>	
<b>Number of Installations</b>	0
<b>Number of Operating Hours in Year</b>	0
<b>Number of Employees</b>	22
<b>User Feedback/Comments</b>	Waste dispatched from the facility has increased due to an increase in waste accepted at the site for transfer. This is due to an increased customer demand for waste management services. The amount of waste dispatched for disposal seems to have increased but this is because the R/D codes may have been incorrect for the previous year.
<b>Web Address</b>	

## 2. PRTR CLASS ACTIVITIES

Activity Number	Activity Name
50.1	General

## 3. SOLVENTS REGULATIONS (S.I. No. 543 of 2002)

Is it applicable?	
Have you been granted an exemption ?	
If applicable which activity class applies (as per Schedule 2 of the regulations) ?	
Is the reduction scheme compliance route being used ?	

## 4. WASTE IMPORTED/ACCEPTED ONTO SITE

[Guidance on waste imported/accepted onto site](#)

Do you import/accept waste onto your site for on-site treatment (either recovery or disposal activities) ?	
--	--

This question is only applicable if you are an IPPC or Quarry site

5. ONSITE TREATMENT & OFFSITE TRANSFERS OF WASTE

| PRTR#: W0253 | Facility Name : Clean (Irl) Refuse & Recycling Co. | Filename : W0253\_2016.xls | Return Year : 2016 |

28/03/2017 12:32

Please enter all quantities on this sheet in Tonnes

34

Transfer Destination	European Waste Code	Hazardous	Quantity (Tonnes per Year)	Description of Waste	Waste Treatment Operation	Method Used		Location of Treatment	Haz Waste : Name and Licence/Permit No of Next Destination Facility	Haz Waste : Name and Licence/Permit No of Recover/Disposer	Haz Waste : Address of Next Destination Facility	Non Haz Waste: Address of Recover/Disposer	Name and License / Permit No. and Address of Final Recoverer / Disposer (HAZARDOUS WASTE ONLY)	Actual Address of Final Destination i.e. Final Recovery / Disposal Site (HAZARDOUS WASTE ONLY)
						M/C/E	Method Used		Non Haz Waste: Name and Licence/Permit No of Recover/Disposer	Non Haz Waste: Address of Recover/Disposer	Non Haz Waste: Name and Licence/Permit No of Recover/Disposer	Non Haz Waste: Address of Recover/Disposer		
Within the Country	13 05 08	Yes		mixtures of wastes from grit chambers and 3.7 oil/water separators	R12	M	Weighed	Offsite in Ireland	Enva Ireland Ltd,W0196-01		John F Kennedy Rd,Naas Road,Dublin,Dublin,Ireland		ENVA Ireland,W0184-01,Clonminam Industrial estate,Portlaoise,Co Laois,,Ireland	Clonminam Industrial estate,Portlaoise,Co Laois,,Ireland
To Other Countries	15 01 01	No	174.86	paper and cardboard packaging	R12	M	Weighed	Abroad	Peute Papier Recycling,DO 02.2017 MDO		Baanhoekweg 4 3313 ,LA,Dordrecht,,Netherlands			
To Other Countries	15 01 01	No	528.44	paper and cardboard packaging	R12	M	Weighed	Abroad	Recycling UK,NSO/544843/B		11Alvaston Business Park,Middlewich Road,Natwich Chesire,CW5 6PF,United Kingdom			
Within the Country	15 01 02	No	0.0	plastic packaging	R12	M	Weighed	Offsite in Ireland	Lenviron T/A Leinster Environmentals,WFP-LH-11-0002-01		Park,Haynestown TD,Haggardstown Dundalk,Co Louth,Ireland			
Within the Country	15 01 07	No	160.9	glass packaging	R5	M	Weighed	Offsite in Ireland	Glassco Recycling Ltd,WFP-KE-08-0357-01		Unit 4,Oberstown business park,Carragh road,Naas Co. Kildare,Ireland			
Within the Country	16 01 03	No	0.0	end-of-life tyres	R12	M	Weighed	Offsite in Ireland	Arch Recycling ,WFP-CE-11-0001-01		Crown,Crown,Lisseycasey,Co Clare,Ireland			
Within the Country	16 02 16	No	0.0	components removed from discarded equipment other than those mentioned in 16 02 15	R12	M	Weighed	Offsite in Ireland	KMK Metals Recycling,W0133-03		Cappincur industrial estate,Daingean Road,Tullamore,Co. Offally,Ireland		KMK Metals Ltd,W0113-03,Cappincur industrial estate,Daingean road,Tullamore,Co Offally,Ireland	Cappincur industrial estate,Daingean road,Tullamore,Co Offally,Ireland
Within the Country	16 06 01	Yes	0.62	lead batteries	R12	M	Weighed	Offsite in Ireland	KMK Metals Recycling,W0133-03		OCR Waste Management Roxborough,,Roscommon,,Ireland			
Within the Country	17 02 01	No	1294.26	wood	R3	M	Weighed	Offsite in Ireland	Galway Metal Company,WFP-11-G-0005-01		Carrowmoneash,Oranmore, Galway ,,Ireland			
Within the Country	17 04 03	No	0.0	lead	R12	M	Weighed	Offsite in Ireland	Galway Metal Company,WFP-11-G-0005-01		Carrowmoneash,Oranmore, Galway ,,Ireland			
Within the Country	17 04 07	No	216.48	mixed metals	R12	M	Weighed	Offsite in Ireland	Allied Waste management Ltd,WFP-KE-08-0347-01		Unit 74A,Naas industrial estate,Naas ,Kildare,Ireland			
Within the Country	17 08 02	No	75.68	gypsum-based construction materials other than those mentioned in 17 08 01	R5	M	Weighed	Offsite in Ireland	Bunlicky WWTP,D0013-01		Dock Road,Limerick,Limerick,Limerick,Ireland			
Within the Country	19 07 03	No	27.9	landfill leachate other than those mentioned in 19 07 02	R12	M	Weighed	Offsite in Ireland	Envirogreen Recycling Ltd,WME03/45		97 Mullalelish Road,Richill,Armagh,B61 9LT,United Kingdom			
To Other Countries	19 12 04	No	0.0	plastic and rubber	R12	M	Weighed	Abroad	Barna Recycling,W0106-2		Clearplas Ireland Gibstown ,Kells,meath,,Ireland			
Within the Country	19 12 04	No	0.0	plastic and rubber	R12	M	Weighed	Offsite in Ireland	Lenviron T/A Leinster Environmentals,WFP-LH-11-0002-01		Clermont Business Park,Haynestown TD,Haggardstown Dundalk,Co Louth,Ireland			
Within the Country	19 12 04	No	24.56	plastic and rubber	R12	M	Weighed	Offsite in Ireland	Powerstown Landfill site,W0025-03		Kilkenny Road,,Co Carlow,,Ireland			

To Other Countries	20 01 01	No	907.7 paper and cardboard	R12	M	Weighed	Abroad	Peute Papier Recycling,DO 02.2017 MDO	Baanhoekweg 4 3313 LA,Dordrecht,,Netherlands
To Other Countries	20 01 01	No	1006.34 paper and cardboard	R12	M	Weighed	Abroad	Recycling UK,NSO/544843/B	11Alvaston Business Park,Middlewich Road,Natwich Chesire,CW5 6PF,United Kingdom
Within the Country	20 01 02	No	85.04 glass	R5	M	Weighed	Offsite in Ireland	John Gannon Concrete,WFP- WM-2009-007-01	Quarry,Haselwood,Kilbeggan ,Co Westmeath,Ireland
Within the Country	20 01 08	No	502.52 biodegradable kitchen and canteen waste	R3	M	Weighed	Offsite in Ireland	McDonnell Farm Biogas Ltd,WFP/LK/2011/50/R2/T1	Dunmoylan,Shanagolden,Lim erick,,Ireland
Within the Country	20 01 08	No	0.0 biodegradable kitchen and canteen waste	R3	M	Weighed	Offsite in Ireland	Barna Recycling,W0106-2	Carrowbrowne,Headford road,Galway,,Ireland
Within the Country	20 01 36	No	discarded electrical and electronic equipment other than those mentioned in 20 18.62 01 21, 20 01 23 and 20 01 35	R12	M	Weighed	Offsite in Ireland	KMK Metals Recycling,W0133-03	Cappincur industrial estate,Daingean Road,Tullamore,Co. Offaly,Ireland
Within the Country	20 01 39	No	20.64 plastics	R12	M	Weighed	Offsite in Ireland	Lenviron T/A Leinster Environmentals,WFP-LH-11- 0002-01	Clermount Business Park,Haynestown TD,Haggardstown Dundalk,Co Louth,Ireland
Within the Country	20 01 39	No	0.0 plastics	R12	M	Weighed	Offsite in Ireland	Envirogreen Recycling Ltd,WMEX03/45	97 Mullalelish Road,Richill,Armagh,B61 9LT,United Kingdom
Within the Country	20 01 40	No	0.0 metals	R12	M	Weighed	Offsite in Ireland	Galway Metal Company,WFP- 11-G-0005-01	Carrowmoneash,Oranmore, Galway ,,Ireland
Within the Country	20 02 01	No	0.0 biodegradable waste	R12	M	Weighed	Offsite in Ireland	Barna Recycling,W0106-2	Carrowbrowne,Headford road,Galway,,Ireland
Within the Country	20 03 01	No	4410.85 mixed municipal waste	R12	M	Weighed	Offsite in Ireland	Killamey Waste disposal,W0217-01	Aughacurren,Killamey ,,Co. Kerry,Ireland
<b>Within the Country</b>	<b>20 03 01</b>	<b>No</b>	1458.21 mixed municipal waste	D14	M	Weighed	Offsite in Ireland	Drehid Landfill,W0201-03	Parsonstown Loughnacush Kilkeaskin,Drumond Timahoe west,Coolcarrigan,Carbury Co Kildare,Ireland
Within the Country	20 03 01	No	190.34 mixed municipal waste	D14	M	Weighed	Offsite in Ireland	Powerstown Landfill site,W0025-03	Kilkenny Road,,Co Carlow,,Ireland
To Other Countries	20 03 01	No	32827.17 mixed municipal waste	R1	M	Weighed	Abroad	Eesti Energia,10421629	105 peterburi road,Maardu,,74114,Estonia
Within the Country	20 03 07	No	1275.7 bulky waste	D14	M	Weighed	Offsite in Ireland	Drehid Landfill,W0201-03	Parsonstown Loughnacush Kilkeaskin,Drumond Timahoe west,Coolcarrigan,Carbury Co Kildare,Ireland
Within the Country	20 03 07	No	858.62 bulky waste	D14	M	Weighed	Offsite in Ireland	Powerstown Landfill site,W0025-03	Kilkenny Road,,Co Carlow,,Ireland
Within the Country	15 01 04	No	1.22 metallic packaging	R12	M	Weighed	Offsite in Ireland	Killamey Waste disposal,W0217-01	Aughacurren,Killamey ,,Co. Kerry,Ireland
Within the Country	17 04 02	No	5.78 aluminium	R12	M	Weighed	Offsite in Ireland	Galway Metal Company,WFP- 11-G-0005-01	Carrowmoneash,Oranmore, Galway ,,Ireland
Within the Country	17 04 11	No	cables other than those mentioned in 17 04 0.8 10	R12	M	Weighed	Offsite in Ireland	Galway Metal Company,WFP- 11-G-0005-01	Carrowmoneash,Oranmore, Galway ,,Ireland
Within the Country	15 01 01	No	25.04 paper and cardboard packaging	R12	M	Weighed	Offsite in Ireland	Irish Packaging Recycling,W0263-01	Ballymount Road,Walkinstown,Dublin 12,D12,Ireland
Within the Country	17 04 07	No	379.51 mixed metals	R12	M	Weighed	Offsite in Ireland	Galway Metal Company,WFP- 11-G-0005-01	Carrowmoneash,Oranmore, Galway ,,Ireland
Within the Country	15 01 07	No	120.82 glass packaging	R12	M	Weighed	Offsite in Ireland	Starus Eco Holdings Ltd (Limerick),W0082-02	Ballykeefe,Dock Road,Limerick,Limerick,Irela nd



Within the Country	15 01 07	No	160.9 glass packaging	R12	M	Weighed	Offsite in Ireland	Glassco Recycling Ltd,WFP-KE-08-0357-01	Unit 4,Oberstown business park,Carragh road,Naas Co. Kildare,Ireland		
Within the Country	20 01 40	No	292.05 metals	R12	M	Weighed	Offsite in Ireland	Clearcircle Metals (Limerick) Ltd. (Treaty City Metals),WFP-LKC-11-001-01	Ballysimon Road,Ballysimon Road,Limerick,Limerick,Ireland		
Within the Country	19 12 04	No	49.68 plastic and rubber	R12	M	Weighed	Offsite in Ireland	Killarney Waste disposal,W0217-01	Aughacurren,Killarney ,Co. Kerry,Ireland		
Within the Country	19 12 04	No	24.1 plastic and rubber	R12	M	Weighed	Offsite in Ireland	Wheely Environmental Refuse Services T/A WERS Waste,WFP-G-14-0002-01	Weir Road,Tuam,Co. Galway,Co. Galway,Ireland		
Within the Country	20 01 01	No	25.2 paper and cardboard	R12	M	Weighed	Offsite in Ireland	Irish Packaging Recycling,W0263-01	Road,Walkinstown,Dublin 12,D12,Ireland		
Within the Country	15 01 02	No	8.22 plastic packaging	R12	M	Weighed	Offsite in Ireland	Irish Packaging Recycling,W0263-01	Road,Walkinstown,Dublin 12,D12,Ireland		
Within the Country	20 01 08	No	280.62 biodegradable kitchen and canteen waste	R3	M	Weighed	Offsite in Ireland	Acorn Recycling Ballybeg Composting Facility,W0249-01	Ballybeg,Littleton,Co. Tipperary,Co. Tipperary,Ireland		
Within the Country	20 01 08	No	83.86 biodegradable kitchen and canteen waste	R3	M	Weighed	Offsite in Ireland	O'Toole Composting Ltd.,W0284-01	Ballinrane,Fenagh,Co Carlow,Co Carlow,Ireland		
Within the Country	20 03 07	No	46.86 bulky waste	D14	M	Weighed	Offsite in Ireland	Ballynagran Landfill Ltd.,W0165-02	Kilcandra,Co. Wicklow,Co. Wicklow,Ireland		
Within the Country	20 03 07	No	56.36 bulky waste	D14	M	Weighed	Offsite in Ireland	Barna Waste,WFP-WM-2016-0004-01	Westmeath,Co Westmeath,Ireland		
Within the Country	20 03 07	No	382.94 bulky waste	D14	M	Weighed	Offsite in Ireland	Knockharley Landfill Ltd,W0146-02	Knockharley,Navan,Co. Meath,Co. Meath,Ireland		
Within the Country	20 03 01	No	27.2 mixed municipal waste other wastes (including mixtures of materials) from mechanical treatment of wastes other than those mentioned in 19 12	D14	M	Weighed	Offsite in Ireland	Knockharley Landfill Ltd,W0146-02	Knockharley,Navan,Co. Meath,Co. Meath,Ireland		
Within the Country	19 12 12	No	1017.88 11	R3	M	Weighed	Offsite in Ireland	Miltown Composting Systems Ltd.,W0270-01	Miltownmore ,Fethard,Co. Tipperary,Co. Tipperary,Ireland		
Within the Country	08 01 11	Yes	waste paint and varnish containing organic solvents or other dangerous substances	R12	M	Weighed	Offsite in Ireland	Enva Ireland Ltd (Portlaoise),W0211-01	Clonminam Industrial Estate,Portlaoise,Co. Laois,Co. Laois,Ireland	ENVA Ireland,W0184-01,Clonminam Industrial estate,Portlaoise,Co Laois,,Ireland	Clonminam Industrial estate,Portlaoise,Co Laois,,Ireland
Within the Country	20 01 38	No	284.1 wood other than that mentioned in 20 01 37	R12	M	Weighed	Offsite in Ireland	Clonmel Waste Disposal Ltd.,WFP-TS-11-00001-01	Lawlesstown,Clonmel ,Co. Tipperary,Co. Tipperary,Ireland		
Within the Country	20 03 01	No	3876.7 mixed municipal waste	R12	M	Weighed	Offsite in Ireland	Forge Hill Recycling Ltd (KWD Cork),WFP-CK-15-0148-01	Forge Hill ,Co. Cork,Co. Cork,Co. Cork,Ireland		
Within the Country	20 03 07	No	38.42 bulky waste	D15	M	Weighed	Offsite in Ireland	Barna Waste,WFP-WM-2016-0004-01	Westmeath,Co Westmeath,Ireland		
Within the Country	20 02 01	No	35.38 biodegradable waste	R3	M	Weighed	Offsite in Ireland	Acorn Recycling Ballybeg Composting Facility,W0249-01	Ballybeg,Littleton,Co. Tipperary,Co. Tipperary,Ireland		
Within the Country	20 03 01	No	128.62 mixed municipal waste	R1	M	Weighed	Offsite in Ireland	Indaver Ireland Ltd.,W0167-03	Carranstown,Duleek,Co. Meath,Co. Meath,Ireland		

\* Select a row by double-clicking the Description of Waste then click the delete button

Previous years data is correct as at 03/03/2017 14:23

<b>Type of Waste</b>	<b>Previous Year Total</b>	<b>Current Year Total</b>	<b>Percentage Change</b>
Hazardous Waste inside the country for disposal	0	0	0
Hazardous Waste inside the country for recovery	10.08	4.64	-53.96825397
Hazardous Waste outside the country for disposal	0	0	0
Hazardous Waste outside the country for recovery	0	0	0
Non-Hazardous Waste for disposal	0	4334.65	100
Non-Hazardous Waste for recovery	50716.17	49478.26	-2.440858606