

 **Panda**  
**An Animal for Recycling**

*Site: Cappagh Road, Finglas, Dublin 11*

*Waste Licence Number W0261-02*

*Annual Environmental Report*

*01<sup>st</sup> January 2016 – 31<sup>st</sup> December 2016*

---

## Table of Contents

Table of Contents .....	2
1. Introduction.....	4
1.1 Company details.....	4
1.2 Management Structure .....	4
1.3 Financial Provision .....	5
1.4 Environmental Policy.....	5
1.5 Activities .....	6
1.6 Waste Activities carried out at the Facility.....	6
1.7 Water Usage:.....	7
2. Summary Information.....	7
2.1 Waste Received.....	7
2.2 Waste acceptance and dispatch summary .....	8
2.3 Waste Recovery Reports.....	8
2.4 Summary report on emissions and interpretation of environmental monitoring .....	9
2.4.1 <i>Surface Water</i> .....	10
2.4.2 <i>Dust Emissions</i> .....	10
2.4.3 <i>Noise Emissions</i> .....	11
2.4.5 <i>Bund, pipe and underground storage tanks integrity</i> .....	12
2.4.6 <i>Summary of resource and energy consumption</i> .....	13
2.4.7 <i>Water</i> .....	13
2.5 Site infrastructure.....	13
2.5.1 <i>In-place</i> .....	13
2.5.2 <i>Planned Infra-structure</i> .....	14
2.6 Progress Report on Proposals Developed to Minimise Water Demand & Trade Effluent Discharge .....	14
2.7 PRTR Emission.....	14
3. Environmental objectives and targets – 2016 and 2017. ....	15
3.1 Summary of reported incidents and complaints.....	17
3.1.1 <i>Reported Incidents Summary</i> .....	17
3.1.2 <i>Complaints:</i> .....	17
3.2 Review of nuisance controls .....	17
3.2.1 <i>Odour</i> .....	17
3.2.2 <i>Noise</i> .....	18

---

3.2.3 <i>Dust</i> .....	18
3.2.4 <i>Vermin</i> .....	18
3.2.5 <i>Flies</i> .....	18
3.2.6 <i>Birds</i> .....	18
3.2.7 <i>Litter</i> .....	18
4.0 Development of Procedures on Site .....	19
5.0 Pollution Emission Register .....	19
6.0 Report on Programme for Public Information .....	19
Appendix A .....	21
Appendix B .....	22
Appendix C .....	23
Appendix D .....	24

## 1. Introduction

Panda were granted the EPA Waste Licence W0261-02 on the 11<sup>th</sup> February 2015, replacing the previous licence W0261-02 issued on the 31<sup>st</sup> August 2010. Panda are licenced to accept and process 250,000 tonnes per annum upon completion of necessary infrastructure. Appendix A illustrates the current site layout.

### 1.1 Company details

Licence No:	W0261-02
Name:	Nurendale
Address:	Cappagh Road, Finglas, Dublin 11.
Telephone Number:	1890 626262
Fax Number:	046 9024189
Website:	<a href="http://www.panda.ie">www.panda.ie</a>

### 1.2 Management Structure

Eamon Waters is the Managing Director of Panda. Brian McCabe and Noel Waters are company Directors. David Naughton is the Environmental Manager. Kieran Connor is the Operations Manager and Noel Hehir is the Manager on site. Bebhinn Brennan is the EHS officer for the site. There are 120 employees either working directly or indirectly at the facility. Appendix B illustrates the organisational structure of the facility for 2016.

### 1.3 Financial Provision

Costing's for both CRAMP and ELRA has been agreed with the Agency and the surety for financial provision is approved by the Agency.

### 1.4 Environmental Policy

In carrying out our function, Panda acknowledge that our activities impact upon the environment both through routine internal operations and the actions of our staff.

It is Panda's policy to protect the environment during all activities, both on and off-site.

This is achieved by:

- Strategic preparation and implementation of operating procedures (including an emergency response procedure).
- Utilizing BAT (Best Available Technology).
- Actively promoting environmental awareness amongst staff and clients through appropriate training and communication programmes.
- Reduce energy use through effective education and awareness and the installation of energy efficient technology where appropriate.
- Implementing a policy of continuous improvement, by means of targeted objectives. All objectives and targets are monitored and up-dated accordingly.

Panda are committed to complying with all relevant environmental regulations and aim to supply a safe, competitive and sustainable service with specific regards to the surrounding environment.

## 1.5 Activities

Under the Industrial Emissions licence W0261-02, Panda conducts the following activities at Cappagh Road, Cappogue, Finglas, Dublin 11:

Recovery, or a mix of recovery and disposal, of non-hazardous waste with a capacity exceeding 75 tonnes per day involving one or more of the following activities, (other than activities to which the Urban Waste Water Treatment Regulations 2001 (S.I. No. 254 of 2001) apply):

(ii) Pre-treatment of waste for incineration or co-incineration

and

The recovery or disposal of waste in a facility, within the meaning of the Act of 1996, which facility is connected or associated with another activity specified in this Schedule in respect of which a licence or revised licence under Part IV is in force or in respect of which licence under the said Part is or will be required.

Panda provide a waste collection service for the domestic, commercial and industrial sectors throughout Ireland. In 2016 Panda were awarded “The Waste Collection operator of the year (Large)” in the Repak Pakman Awards.

The normal facility operating hours are 6am-6pm (Monday-Friday) & 6am-1pm (Saturdays). The facility is licensed to accept non-hazardous wastes only.

## 1.6 Waste Activities carried out at the Facility

Waste accepted and dispatched at the facility is weighed using P&L’s weighbridge software “IWS6” and from the 1<sup>st</sup> of December 2016, weighbridge software “WIMS”. Panda operates two building for waste acceptance. The facility is primarily used as a transfer facility. The facility accepts skip waste from construction and demolition sites, household renovations/clearances and C&I Dry mixed municipal waste (Non-black bag-putrescible waste) in Building A1. Ferrous, Non Ferrous, Wood, rubble, soil & stones, green waste and bulky waste are segregated from the incoming waste, in the facility

---

manually and by using a track machine. The remaining mixed waste is then bulked up and sent onward to other Panda facilities for processing. Source segregated cardboard, plastic & hangers and commercial and domestic dry mixed recyclables, mixed solid waste and brown bin waste are accepted in building A2. Where the Mixed Solid Waste and brown bin is accepted, the building is maintained under negative air pressure with the extracted being treated in an Odour Control Unit.

Source segregated baled cardboard, baled plastic and boxed plastic hangers are also accepted for bulking up from Dunnes Stores collections nationwide.

There is a dual weighbridge for incoming and outgoing waste.

#### 1.7 Water Usage:

Water for dust suppression, office and amenities use is taken from a well. Water for fire fighting equipment i.e. hose reels and stand pipes is taken from public supply.

Water usage on site consists of:

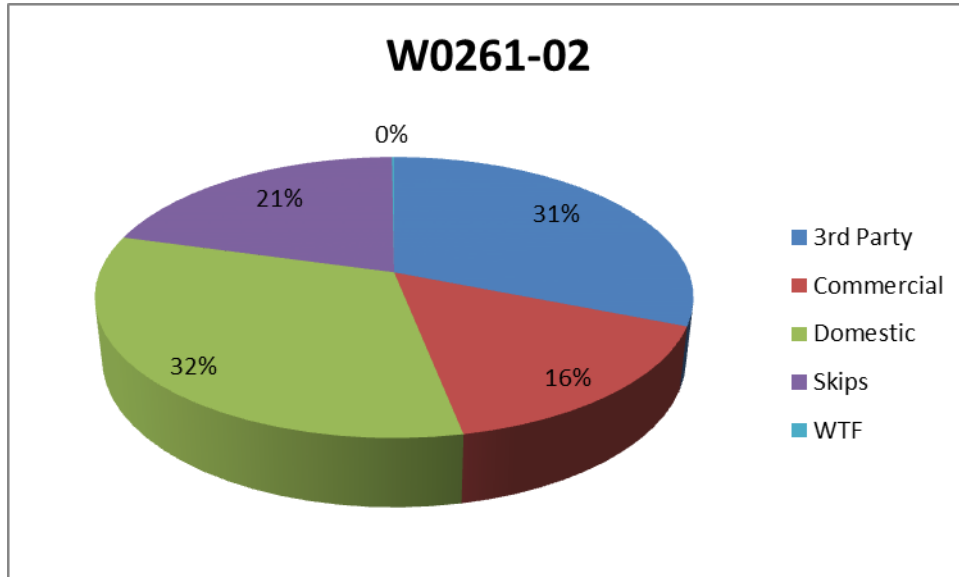
- In-house road sweeper (daily visits).
- Dust suppression sprayers in the shed and on the South-western external side of shed (as required)
- Hoses on site for dust suppression.
- Fire Fighting equipment.

## 2. Summary Information

### 2.1 Waste Received

The waste received at the facility from the 1<sup>st</sup> January 2016 to the 31<sup>st</sup> December 2016 was 185,867.77 tonnes. From the pie chart (Fig 1) it is evident that 3<sup>rd</sup> party waste and domestic waste are the largest sources of Panda's waste acceptance.

**Fig. 1: Waste Collected by Panda by Customer profile.**



## 2.2 Waste acceptance and dispatch summary

See Appendix C for the breakdown of the different waste accepted at the facility and of waste removed off site by EWC Code.

## 2.3 Waste Recovery Reports

To contribute to the Landfill Directive, Panda operates various systems to maximise recovery and recycling with most processing being carried out in the headquarters' facility.

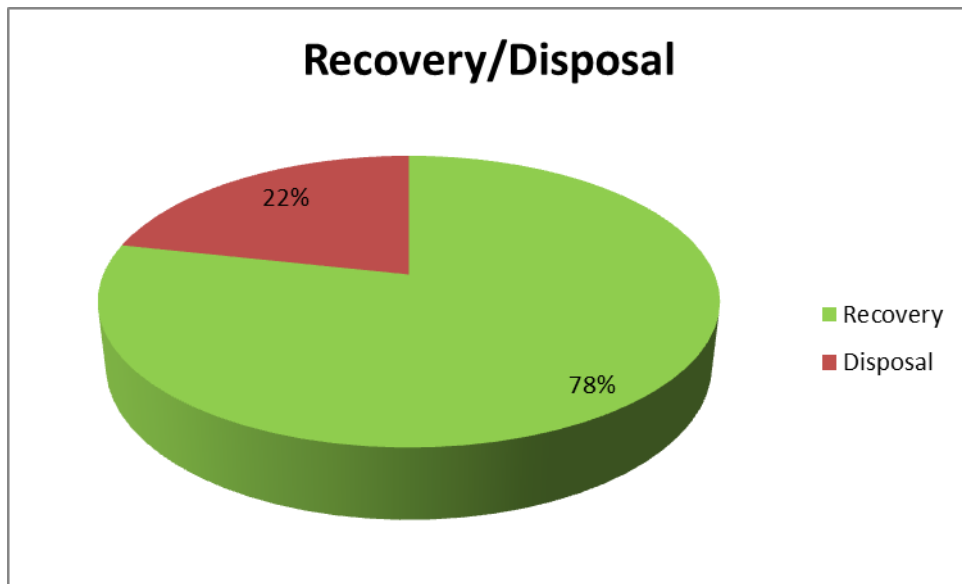
Panda applied to the Agency for a review the current Waste Licence (W0140-04) for the Beauparc facility in September 2009. This review was submitted to the Agency, so that Panda can produce a SRF/RDF product from the residual waste previously sent to Landfill. Panda also reviewed the licence for the purpose of constructing an Anaerobic Digestion/Composting plant. Panda have rolled out a source segregated collection service for biodegradable waste for both household and commercial customers.



Panda process the mixed C&D waste in the Beauparc facility in building 2, this includes a shredder, trommel, magnet, wind shifter and a picking line so as to divert as much C&D waste away from landfill as possible in order to comply with “A Resource Opportunity, 2012” for landfill diversion. To date the processing of C&D Waste has been extremely successful with the majority of the residual being processed into Solid Recovered Fuel.

Fig. 2 details the recovery rates of waste leaving Panda’s facility in 2016.

**Fig. 2:** Outgoing destination recovery rate.



#### 2.4 Summary report on emissions and interpretation of environmental monitoring

Under Schedule C of the licence W0261-02, Panda are required to monitor storm water emissions, BMW content of municipal waste dispatched to landfill (Frequency-as specified by the Agency), noise and ambient air monitoring (Dust). The following sub-headings detail the results from independent laboratories of the different parameters and the emission limit values ELV’s set by the EPA and any complaints and incident that may have occurred during the year.

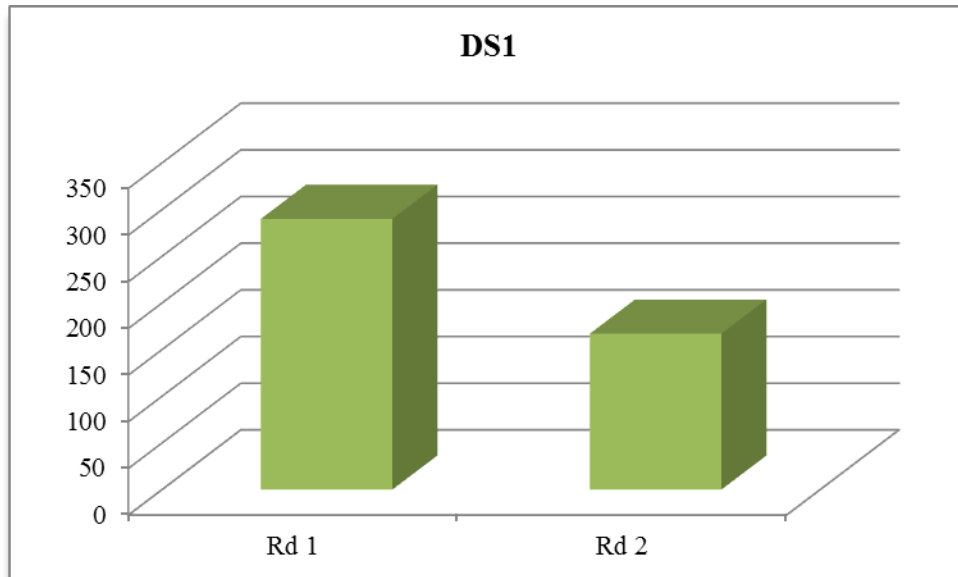
### 2.4.1 Surface Water

Storm water passes through a silt trap and oil interceptor prior to being discharged to the storm water network, which ultimately discharges into a tributary of the Tolka River. The surface water monitoring point is located at the south-eastern corner of the facility at the co-ordinates X/E 310429 Y/N 240420 (SW1).

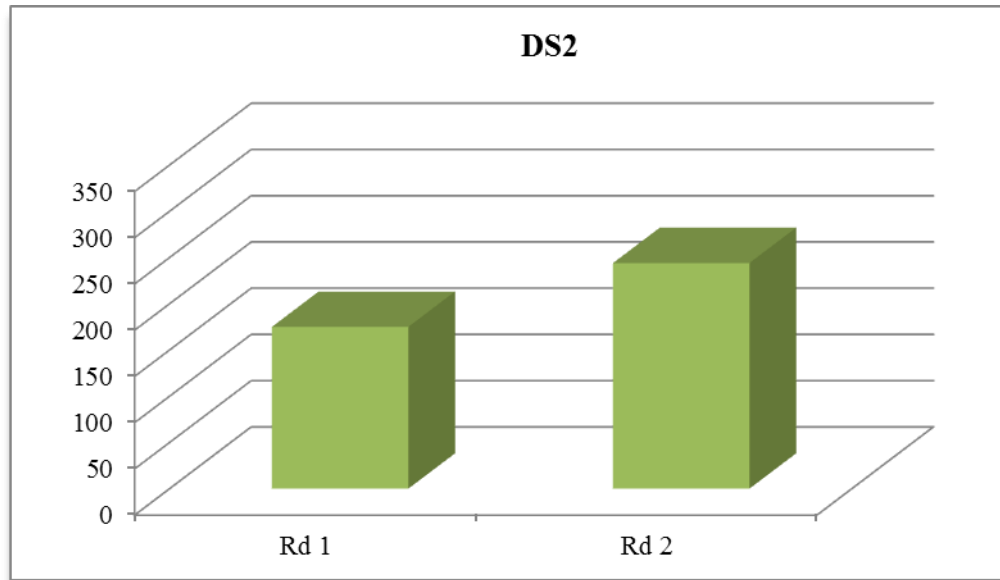
### 2.4.2 Dust Emissions

As per schedule B5 for dust deposition limits, there are currently two sampling locations (AD1 and AD2). Monitoring is required bi-annually on site. A dust suppression unit was installed in the shed to ensure dust emissions from the tipping, sorting and reloading are kept to a minimum. Figs 3&4 illustrate dust recordings for 2016.

**Fig. 3:** Dust emission results for DS1 (AD1)



**Fig. 4:** Dust emission results for DS2 (AD2)



As per Schedule B.5, the dust deposition limit for the site is 350 mg m<sup>-2</sup> d<sup>-1</sup>. Both DS1 and DS2 are well within licenced ELV's.

#### 2.4.3 Noise Emissions

Noise emissions are monitored according to Schedule B.4 and the emission limit values (ELV) set out in Schedule C.5 of the licence. An independent competent consultant has been commissioned to conduct the noise sampling for the facility. Tables 1 - 3 detail results of noise monitoring conducted on the 17<sup>th</sup> June 2016.

**Table 1.** Day- time noise emissions 2016 (Intervals of 30 minutes)

Location	Time	Leq	L10	L90	Comments
AN1	16.00-19.00	51.4	54.3	44.6	Main noise emission from facility less than 52dBA
AN2	15.30-18.30	54.9	57.3	46.8	Noise from waste facility less than 55dBA
ANSL1	19.00-	70.0	74.00	58.8	Mainly road traffic noise and waste facility

	20.00				at less than 52.1dBA
ANSL2	19.30- 20.30	69.0	72.7	54.2	Mainly road traffic noise and waste facility less than Lmin of 50.5dBA

**NB Location of ANSL1 and ANSL2 are alongside the busy road traffic route**

**Table 2.** Evening- time noise emissions 2016 (Intervals of 30 minutes)

Location	Time	Leq	L10	L90	Comments
AN1	19.00- 21.30	48.9	51.9	39.6	Noise from waste facility less than 49dBA
AN2	19.00- 21.30	51.7	55.0	38.3	Noise from waste facility less than 52dBA
ANSL1	19.00- 20.00	64.9	67.6	47.7	Road traffic noise –no activity audible off-site at any NSL
ANSL2	19.30- 20.30	64.6	65.8	45.1	Road traffic noise –no activity audible off-site at any NSL

**Table 3.** Night- time noise emissions 2016 (intervals of 30 minutes)

Location	Time	Leq	L10	L90	Comments
AN1	23.00	43.2	41.5	38.5	Road traffic noise – no activity on site
AN2	23.00	41.8	42.00	35.7	Road traffic noise – no activity on site
ANSL1	23.00	60.9	60.7	40.7	Road traffic noise –no activity on site
ANSL2	23.00	58.1	54.3	40.0	Road traffic noise –no activity on site

#### *2.4.5 Bund, pipe and underground storage tanks integrity*

The integrity and water tightness of all underground pipes, all tanks, bunding structures and containers and their resistance to penetration by water and other materials is required to be carried out every three years and thereafter and reported to the Agency. The pipeline and UST integrity was tested in Q3 of 2015. The integrity of underground pipes, tanks was tested and found to be compliant. Testing was carried out of the bunds in January 2016 and again was found to be compliant.

---

#### 2.4.6 Summary of resource and energy consumption

**Table 4:** Summary of Energy Consumption from January 2016 to December 2016.

Resource	
Gas Oil	145871.50 Litres
Electricity	516,182 kWh

#### 2.4.7 Water

Dust control and amenity water is obtained from the well located off site. Fire fighting water is taken from public supply.

#### 2.5 Site infrastructure

The following are details on infrastructure in the facility.

##### 2.5.1 In-place

The current site infrastructure is outlined below in List 1. List 2 details the waste processing equipment used on site.

**List 1:** Current site infrastructure

1. Offices
2. Dual Weighbridge.
3. Two x Waste processing building
4. One x Dust suppression system
5. Ancillary ESB building
6. Canteen & toilets.
7. Water Attenuation Tank
8. Oil Interceptor
9. Fuel Depot
10. Fencing around the site
11. 1 x odour Control Unit

**List 2: Waste processing equipment**

3 x Forklifts	1 x Bollergraf Baler
1 x Moffit with clamps	2 x Volvo Loading Shovel
1 x Track machine	1 x Multisweep

There is sufficient back up within the group if any of the plant listed breaks down.

*2.5.2 Planned Infra-structure*

It is anticipated that the concrete yards at the south western area of the facility will be completed by the end of 2017.

**2.6 Progress Report on Proposals Developed to Minimise Water Demand & Trade Effluent Discharge**

To minimise the water demand on site, Panda are investigating collecting the rainwater from the roof and using this for dust suppression around the yard.

**2.7 PRTR Emission.**

Panda's PRTR emission return is provided in Appendix D.

### 3. Environmental objectives and targets – 2016 and 2017.

No	Objective & Target	Method of Achievement	Responsibility	2016 Programme	Complete in 2016	2017 Programme
1	<b>Assess the Effectiveness of Nuisance Control Procedures</b>	Continually review and assess all nuisance control procedures to ensure minimal impact on surrounding area	Environmental Manager/ EHS Officer	July '16	Completed in '16	July '17
		Ensure yards are cleaned at the end of each working day	Operatives	Continuous	Continuous	Continuous
2	<b>Prevent Water Pollution from Run-Off</b>	Ensure all gullies are maintained and regularly cleaned	EHS Officer/ Operatives	Continuous	Continuous	Continuous
		Ensure that levels in the trade effluent tank is maintained at an appropriate height	Facility Manager/Operatives	Continuous	Continuous	Continuous
3	<b>Assess &amp; Review Resource &amp; Energy Consumption at the site</b>	Carry out an energy audit on the site	Environmental Manager		Completed in Feb '16	Review July'17
4	<b>Maintain and Develop the Environmental Management System</b>	Maintain EMS Documentation on site	Environmental Manager / EHS Officer	Continuous	Continuous	Continuous
		Update procedures to reflect operational and control changes				
5	<b>Review and Update the Site Specific EMS</b>	Implement a plan to review and update the EMS for the site.	EHS Officer	December '16		Dec '17
6	<b>Implement a training programme for all staff</b>	Identify staff training requirements and provide relevant training	EHS Officer	December '16		Dec '17
7	<b>Assess Waste Acceptance Procedures for Casual Customers</b>	Have all casual customers sign waste collection permit exemption indemnity letters.	Weighbridge Management			Commence Q1 '17
8	<b>Environmental Monitoring</b>	Implement the Environmental Monitoring Programme specified in the Waste Licence	Environmental Manager/EHS Officer	Continuous	Continuous	Continuous

	<b>Objective &amp; Target</b>	<b>Method of Achievement</b>	<b>Responsibility</b>	<b>2016 Programme</b>	<b>Complete in 2016</b>	<b>2017 Programme</b>
		Investigate and incidences of emission limit values	Environmental Manager/EHS Officer	Continuous	Continuous	Continuous
<b>9</b>	<b>To control any emergencies that may arise at the facility</b>	Review and train all staff in the Emergency Response Procedure	Environmental Manager/EHS Officer	July '16	Continuous Training	Continuous Training
<b>10</b>	<b>Ensure lighting in waste handling buildings provide sufficient lighting so as to assess incoming waste</b>	Clean all light bulbs and covers in waste handling buildings	Environmental Manager/ Yard Manager			Aug '17
<b>11</b>	<b>Office Recycling</b>	Continuation of office recycling	Office Manager/ Environmental Department	Continuous	Continuous	Continuous



### 3.1 Summary of reported incidents and complaints

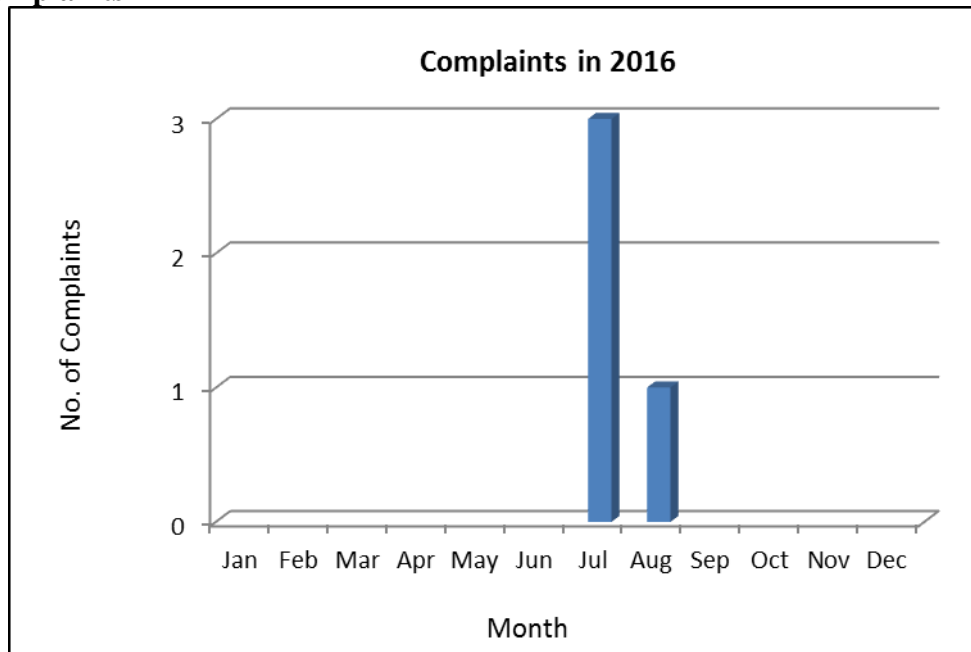
#### 3.1.1 Reported Incidents Summary

*Fire Shed A1 – 4<sup>th</sup> May 2016:* Smoke was detected in C&D shed by security staff at approx. 8.00pm. Dublin Fire Brigade and Site Management were notified immediately. The fire was contained by site staff and extinguished by Dublin Fire Brigade. The incident was fully investigated and closed out. No significant environmental damage occurred.

#### 3.1.2 Complaints:

Fig. 5 illustrates complaints either made directly to the Agency or to Panda’s facility for each month during 2016. There were a total of 4 complaints made in 2016, directly to Panda. All of these were thoroughly investigated and closed out in a timely fashion.

**Fig. 5: Complaints**



### 3.2 Review of nuisance controls

#### 3.2.1 Odour

Odour emissions from the odorous waste accepted at the facility is controlled by way of maintaining the building under negative air pressure with the extracted air being treated in the Odour Control Unit.

---

Each day, the Facility Manager and EHS Officer conduct an inspection of the site. Odour nuisances are included on this inspection.

### *3.2.2 Noise*

The monitoring results showed that noise is not a nuisance, as only minimal plant operates on site.

### *3.2.3 Dust*

A dust suppression system is installed in the shed and on the external (South-western side) of the building. A multisweep unit is on site and used regularly throughout the day for cleaning and is fitted with spray bars for dust suppression. Fire hoses are also available to spray water on concreted yards as required.

### *3.2.4 Vermin*

A file on vermin control is maintained in the office. A sub-contractor is used to control any vermin on site.

### *3.2.5 Flies*

Good housekeeping practices are used to prevent fly infestations. The yard is kept clean using a road sweeper and all waste for disposal is removed from the facility within 48 hours, or 72 hours in the case of a bank holiday weekends.

### *3.2.6 Birds*

In order to avoid having birds as a nuisance, litter control is practised at all times, this includes regular litter patrols.

### *3.2.7 Litter*

A designated member of staff carries out litter inspections of the facility twice daily and gathers any litter deposited.

#### **4.0 Development of Procedures on Site**

The Emergency Response Procedure (ERP) was reviewed and amended to reflect the changes of the company and update useful contact telephone numbers. A review of all other site procedures was also carried out.

#### **5.0 Pollution Emission Register**

After consulting the PERL list Panda are not using any substance that is listed at present.

#### **6.0 Report on Programme for Public Information**

Panda have re-developed their website in 2015; one of the features is an Environmental page where the following can be downloaded,

- Facility Licences W0140-04, **W0261-02**, W0263-01, W0039-02, W0238-01 and W0003-03,
- Multi-Regional Waste collection permit (NWCPO-14-11326-03),
- TFS Broker licences,
- Customer Charter,
- Environmental Policy,

Domestic wheelie bin customers can also download their relevant collection calendar and pay bills.

Panda have a news section on the website, with regular updates on collections, offers, etc.

Over the Christmas period 2016 Panda put advertisements in all the local newspapers to inform customers of the schedule of bin collections over the Christmas Period. Panda also issued all domestic customers with a Christmas calendar showing collection days over that period. If there were any change to a domestic route, this would also be advertised in the local media.

In March 2009, Panda commenced SMS messaging to domestic customers regarding their collections. Panda are also encouraging customers to receive email invoicing, thereby reducing dependence on paper invoices and envelopes.

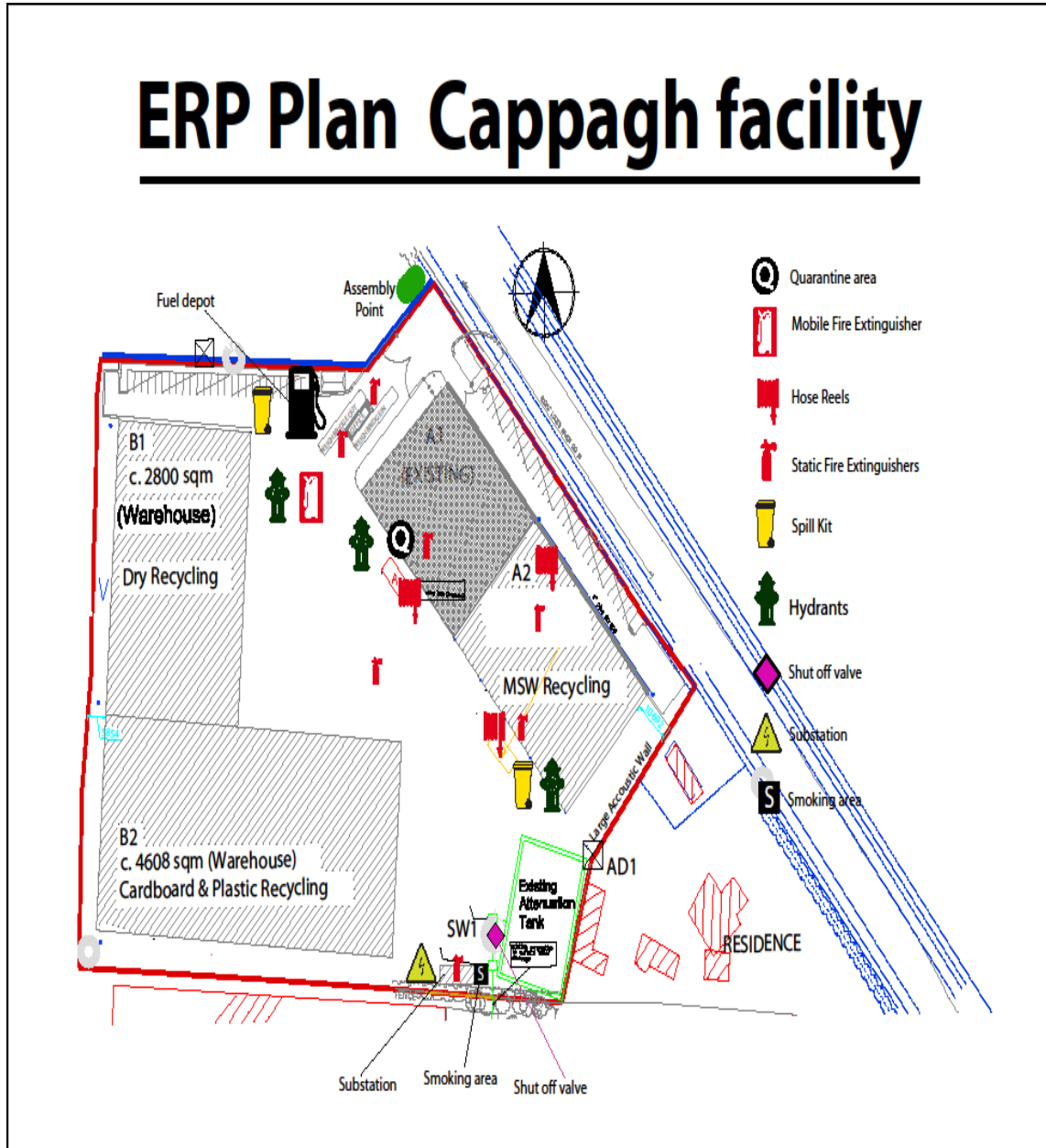
Recycling certificates are issued to customers, on request, so that they can determine their recycling on a weekly/monthly or annual basis.

Advertisements are taken out regularly in the local newspapers informing customers of the services that Panda offer. Tours of the facilities are given to schools and to members of the public upon request. During the reporting period there were no requests from members of the public to inspect any Environmental Records.

The information in the Annual Environmental Report is true and accurate representation of the activities conducted by Panda in 2016.

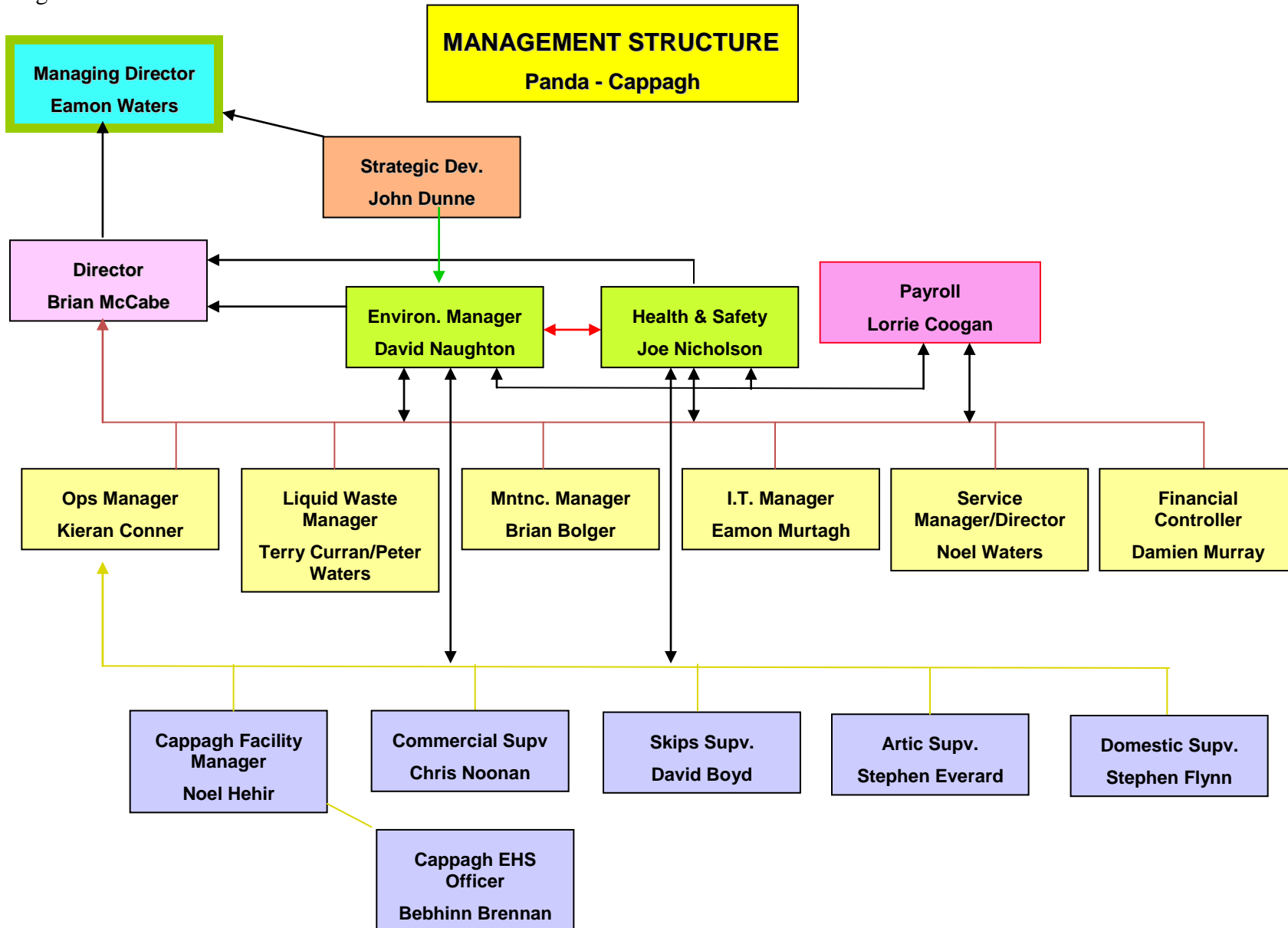
# Appendix A

## Site Layout and ERP Map



# Appendix B

## Organisational Structure



## Appendix C

### Waste Summary

<b>EWC Code</b>	<b>Incoming 2015</b>	<b>Incoming 2016</b>	<b>Outgoing 2015</b>	<b>Outgoing 2016</b>
15 01 01	21324.542	25315.233	21718.8	25317.5
15 01 02	2410.508	2510.98	2093.02	1831.06
15 01 03	66.69	50.65		
16 01 03			27.38	15.28
16 03 06	5.02			
17 01 07	804.51			
17 02 01	380.84	2542.49		50.98
17 02 03				11.18
17 04 05		839.91		
17 05 04	2729.65	1671.38	11496.88	11548.9
17 08 02	281.86	268.14	499.539	
17 09 04	27793.363	38735.87		214.18
19 08 01	1.98	2.08		
19 12 02	4.14		1571.584	2612.76
19 12 03			39.208	41.569
19 12 07	8.74		5509.317	6360.4
19 12 12		42.76	13772.89	18025.34
19 12 14				4.58
20 01 01	7212.36	11003.45	7155.839	12919.36
20 01 02	53.56	65.96		
20 01 08	5702.46	23020.95	5805.02	22769.82
20 01 11	12.96	6.20		
20 01 34			3.72	
20 01 35				1.7
20 01 36	8.46		103.14	64.56
20 01 38	1076.54			537.3
20 01 39	50.686		227.04	354.22
20 01 40	250.36			246.8
20 02 01	174.8	78.22	595.22	647.68
20 02 02				236.08
20 03 01	38226.223	76793.54	41012.637	88085.5
20 03 03		9.44		
20 03 07		2910.52		40.42
<b>Total</b>	<b>108580.252</b>	<b>185867.773</b>	<b>111631.234</b>	<b>191937.169</b>

# Appendix D

## PRTR Emissions



| PRTR#: W0261 | Facility Name : Nurendale (Cappagh Road) | Filename : PRTR W0261\_2016.xls | Return Year : 2016 |

[Guidance to completing the PRTR workbook](#)

## PRTR Returns Workbook

Version 1.1.19

<b>REFERENCE YEAR</b>	2016
-----------------------	------

### 1. FACILITY IDENTIFICATION

Parent Company Name	Nurendale
Facility Name	Nurendale (Cappagh Road)
PRTR Identification Number	W0261
Licence Number	W0261-02

#### Classes of Activity

No.	class_name
-	Refer to PRTR class activities below

Address 1	Cappagh Road
Address 2	Finglas
Address 3	Dublin 11
Address 4	
	Dublin
Country	Ireland
Coordinates of Location	-6.33881 53.40272
River Basin District	IEEA
NACE Code	3832
Main Economic Activity	Recovery of sorted materials
AER Returns Contact Name	David Naughton
AER Returns Contact Email Address	david.naughton@nurendale.ie
AER Returns Contact Position	Environmental Manager
AER Returns Contact Telephone Number	1890626262
AER Returns Contact Mobile Phone Number	1890626262
AER Returns Contact Fax Number	046 9024189
Production Volume	0.0
Production Volume Units	
Number of Installations	0
Number of Operating Hours in Year	0
Number of Employees	120
User Feedback/Comments	Waste variance is due to the nature of the waste accepted. Waste volumes dispatched is not consistent from year to year.
Web Address	www.panda.ie

### 2. PRTR CLASS ACTIVITIES

Activity Number	Activity Name
50.1	General
5(a)	Installations for the recovery or disposal of hazardous waste
5(c)	Installations for the disposal of non-hazardous waste
50.1	General

### 3. SOLVENTS REGULATIONS (S.I. No. 543 of 2002)

Is it applicable?	No
Have you been granted an exemption?	
If applicable which activity class applies (as per Schedule 2 of the regulations)?	
Is the reduction scheme compliance route being used?	

### 4. WASTE IMPORTED/ACCEPTED ONTO SITE

[Guidance on waste imported/accepted onto site](#)

Do you import/accept waste onto your site for on-site treatment (either recovery or disposal activities)?	No
---	----

This question is only applicable if you are an IPPC or Quarry site



4.1 RELEASES TO AIR

[Link to previous years emissions data](#)

[PRTR#: W0261 | Facility Name : Nurendale (Cappagh Road) | Filename : PRTR W0261\_2016.xls | Return Year : 2016 |

31/03/2017 10:48

SECTION A : SECTOR SPECIFIC PRTR POLLUTANTS

RELEASES TO AIR				Please enter all quantities in this section in KGs			
POLLUTANT		METHOD		ADD EMISSION POINT	QUANTITY		
No. Annex II	Name	M/C/E	Method Used Method Code Designation or Description	Emission Point 1	T (Total) KG/Year	A (Accidental) KG/Year	F (Fugitive) KG/Year
					0.0	0.0	0.0

ADD NEW ROW | DELETE ROW \* \* Select a row by double-clicking on the Pollutant Name (Column B) then click the delete button

SECTION B : REMAINING PRTR POLLUTANTS

RELEASES TO AIR				Please enter all quantities in this section in KGs			
POLLUTANT		METHOD		ADD EMISSION POINT	QUANTITY		
No. Annex II	Name	M/C/E	Method Used Method Code Designation or Description	Emission Point 1	T (Total) KG/Year	A (Accidental) KG/Year	F (Fugitive) KG/Year
					0.0	0.0	0.0

ADD NEW ROW | DELETE ROW \* \* Select a row by double-clicking on the Pollutant Name (Column B) then click the delete button

SECTION C : REMAINING POLLUTANT EMISSIONS (As required in your Licence)

RELEASES TO AIR				Please enter all quantities in this section in KGs				
POLLUTANT		METHOD		ADD EMISSION POINT	QUANTITY			
Pollutant No.	Name	M/C/E	Method Used Method Code Designation or Description	DS1 Emission Point 1	DS2 Emission Point 2	T (Total) KG/Year	A (Accidental) KG/Year	F (Fugitive) KG/Year
210	Dust	M	ALT Gravimetry	0.08	0.08	0.16	0.0	0.0

ADD NEW ROW | DELETE ROW \* \* Select a row by double-clicking on the Pollutant Name (Column B) then click the delete button

Additional Data Requested from Landfill operators

For the purposes of the National Inventory on Greenhouse Gases, landfill operators are requested to provide summary data on landfill gas (Methane) flared or utilised on their facilities to accompany the figures for total methane generated. Operators should only report their Net methane (CH4) emission to the environment under T(total) KG/yr for Section A: Sector specific PRTR pollutants above. Please complete the table below:

Landfill: Please enter summary data on the quantities of methane flared and / or utilised	Nurendale (Cappagh Road)			
	T (Total) kg/Year	M/C/E	Method Used Method Code Designation or Description	Facility Total Capacity m3 per hour
Total estimated methane generation (as per site model)	0.0			N/A
Methane flared	0.0			0.0 (Total Flaring Capacity)
Methane utilised in engine/s	0.0			0.0 (Total Utilising Capacity)
Net methane emission (as reported in Section A above)	0.0			N/A

4.2 RELEASES TO WATERS

[Link to previous years emissions data](#)

| PRTR# : W0261 | Facility Name : Nurendale (Cappagh Road) | Filename : PRTR W0261\_2016.xls | Return Year : 2016 |

31/03/2017 10:48

**SECTION A : SECTOR SPECIFIC PRTR POLLUTANTS**

**Data on ambient monitoring of storm/surface water or groundwater, conducted as part of your licence requirements, should NOT be submitted under AER / PRTR**

RELEASES TO WATERS					Please enter all quantities in this section in KGs			
POLLUTANT		METHOD USED			ADD EMISSION POINT	QUANTITY		
No. Annex II	Name	M/C/E	Method Code	Designation or Description	Emission Point 1	T (Total) KG/Year	A (Accidental) KG/Year	F (Fugitive) KG/Year
						0.0	0.0	0.0

ADD NEW ROW | DELETE ROW \* \* Select a row by double-clicking on the Pollutant Name (Column B) then click the delete button

**SECTION B : REMAINING PRTR POLLUTANTS**

RELEASES TO WATERS					Please enter all quantities in this section in KGs			
POLLUTANT		METHOD USED			ADD EMISSION POINT	QUANTITY		
No. Annex II	Name	M/C/E	Method Code	Designation or Description	Emission Point 1	T (Total) KG/Year	A (Accidental) KG/Year	F (Fugitive) KG/Year
						0.0	0.0	0.0

ADD NEW ROW | DELETE ROW \* \* Select a row by double-clicking on the Pollutant Name (Column B) then click the delete button

**SECTION C : REMAINING POLLUTANT EMISSIONS (as required in your Licence)**

RELEASES TO WATERS					Please enter all quantities in this section in KGs			
POLLUTANT		METHOD USED			ADD EMISSION POINT	QUANTITY		
Pollutant No.	Name	M/C/E	Method Code	Designation or Description	Emission Point 1	T (Total) KG/Year	A (Accidental) KG/Year	F (Fugitive) KG/Year
						0.0	0.0	0.0

4.3 RELEASES TO WASTEWATER OR SEWER

[Link to previous years emissions data](#)

| PRTR# : W0261 | Facility Name : Nurendale (Cappagh Road) | Filename : PRTR W0261\_2016.xl

31/03/2017 10:48

**SECTION A : PRTR POLLUTANTS**

OFFSITE TRANSFER OF POLLUTANTS DESTINED FOR WASTE-WATER TREATMENT OR SEWER					Please enter all quantities in this section in KGs			
POLLUTANT		METHOD			ADD EMISSION POINT	QUANTITY		
No. Annex II	Name	M/C/E	Method Code	Designation or Description	Emission Point 1	T (Total) KG/Year	A (Accidental) KG/Year	F (Fugitive) KG/Year
						0.0	0.0	0.0

ADD NEW ROW | DELETE ROW \* \* Select a row by double-clicking on the Pollutant Name (Column B) then click the delete button

**SECTION B : REMAINING POLLUTANT EMISSIONS (as required in your Licence)**

OFFSITE TRANSFER OF POLLUTANTS DESTINED FOR WASTE-WATER TREATMENT OR SEWER					Please enter all quantities in this section in KGs			
POLLUTANT		METHOD			ADD EMISSION POINT	QUANTITY		
Pollutant No.	Name	M/C/E	Method Code	Designation or Description	Emission Point 1	T (Total) KG/Year	A (Accidental) KG/Year	F (Fugitive) KG/Year
						0.0	0.0	0.0

4.4 RELEASES TO LAND

[Link to previous years emissions data](#)

| PRTR#: W0261 | Facility Name: Nurendale (Cappagh Road) | Filename: PRTR W0261\_2016.xls | Return Year: 2016 |

31/03/2017 10:48

SECTION A : PRTR POLLUTANTS

RELEASES TO LAND					Please enter all quantities in this section in KGs		
POLLUTANT		METHOD			ADD EMISSION POINT	QUANTITY	
No. Annex II	Name	M/C/E	Method Code	Designation or Description	Emission Point 1	T (Total) KG/Year	A (Accidental) KG/Year
					0.0	0.0	0.0

ADD NEW ROW | DELETE ROW \* \* Select a row by double-clicking on the Pollutant Name (Column B) then click the delete button

SECTION B : REMAINING POLLUTANT EMISSIONS (as required in your Licence)

RELEASES TO LAND					Please enter all quantities in this section in KGs		
POLLUTANT		METHOD			ADD EMISSION POINT	QUANTITY	
Pollutant No.	Name	M/C/E	Method Code	Designation or Description	Emission Point 1	T (Total) KG/Year	A (Accidental) KG/Year
					0.0	0.0	0.0

5. ONSITE TREATMENT & OFFSITE TRANSFERS OF WASTE

| PRTR#: W0261 | Facility Name: Nurendale (Cappagh Road) | Filename: PRTR W0261\_2016.xls | Return Year: 2016 |

31/03/2017 10:48

Please enter all quantities on this sheet in Tonnes

Transfer Destination	European Waste Code	Hazardous	Quantity (Tonnes per Year)	Description of Waste	Waste Treatment Operation	METHOD		Location of Treatment	Haz Waste: Name and Licence/Permit No of Next Destination Facility	Haz Waste: Address of Next Destination Facility	Name and License / Permit No. and Address of Final Recoverer / Disposer (HAZARDOUS WASTE ONLY)	Actual Address of Final Destination i.e. Final Recovery / Disposal Site (HAZARDOUS WASTE ONLY)
						M/C/E	Method Used		Non-Haz Waste: Name and Licence/Permit No of Recoverer/Disposer	Non-Haz Waste: Address of Recoverer/Disposer		
Within the Country	15 01 01	No	0.0	paper and cardboard packaging	R12	M	Weighed	Offsite in Ireland	Irish Packaging Recycling ,W0263-01	Lower Ballymount Road,Walkinstown,Dublin 12,,Ireland		
Within the Country	15 01 01	No	0.0	paper and cardboard packaging	R12	M	Weighed	Offsite in Ireland	Panda Navan,W0140-03	Rathdrinagh,Beauparc,Navan,Co. Meath,Ireland		
Within the Country	15 01 01	No	0.0	paper and cardboard packaging	R12	M	Weighed	Offsite in Ireland	Dublin City Council MRF,W0238-01	Park,Ballymount,Dublin 12,,Ireland		
To Other Countries	15 01 01	No	25317.5	paper and cardboard packaging	R13	M	Weighed	Abroad	Nurendale Broker,IREAG133-17	Lower Ballymount rd,Walkinstown,Dublin 12,,Ireland		
Within the Country	15 01 02	No	0.0	plastic packaging	R12	M	Weighed	Offsite in Ireland	Dublin City Council MRF,W0238-01	Park,Ballymount,Dublin 12,,Ireland		
Within the Country	15 01 02	No	1831.06	plastic packaging	R12	M	Weighed	Offsite in Ireland	Irish Packaging Recycling Ltd,W0263-01	Road,Walkinstown,Dublin 12,,Ireland		
Within the Country	15 01 03	No	0.0	wooden packaging	R12	M	Weighed	Offsite in Ireland	Conroy Recycling Company Ltd,WFP-WH-2009-0002-01	Sonna,Slanemore,Mullingar, Co. Westmeath,Ireland		
Within the Country	16 01 03	No	0.0	end-of-life tyres	R1	M	Weighed	Offsite in Ireland	Wilton Waste Recycling Ltd,WFP-CN-10-0005-01(1)	Kiffagh,Crosserlough,Ballyja mesduff,Co. Cavan,Ireland		
Within the Country	16 01 03	No	15.28	end-of-life tyres mixture of concrete, bricks, tiles and ceramics other than those mentioned in 17	R12	M	Weighed	Offsite in Ireland	Irish Packaging Recycling ,W0263-01	Road,Walkinstown,Dublin 12,,Ireland		
Within the Country	17 01 07	No	0.0	01 06	R12	M	Weighed	Offsite in Ireland	Behans Land Restoration Ltd,W0247-01	Blackhall,Punchestown,Naa s,Co. Kildare,Ireland		
Within the Country	17 02 01	No	0.0	wood soil and stones other than those mentioned	R12	M	Weighed	Offsite in Ireland	Nurendale,W0140-03	Meath,,Ireland		
Within the Country	17 05 04	No	10389.48	in 17 05 03	R10	M	Weighed	Offsite in Ireland	Behans Land Restoration Ltd,W0247-01	Blackhall,Punchestown,Naa s,Co. Kildare,Ireland		

Within the Country	17 05 04	No	soil and stones other than those mentioned 0.0 in 17 05 03	R10	M	Weighted	Offsite in Ireland	Murphy Environmental ,W0129-01	Hollywood Great,Nags Head,The Naul,Co. Dublin,Ireland
Within the Country	17 05 04	No	soil and stones other than those mentioned 1159.42 in 17 05 03	R12	M	Weighted	Offsite in Ireland	Nurendale,W0140-03	Beauparc Business Park,Navan,Co. Meath,,Ireland
<b>Within the Country</b>	<b>17 08 02</b>	<b>No</b>	gypsum-based construction materials other 0.0 than those mentioned in 17 08 01	R12	M	Weighted	Offsite in Ireland	Nurendale,W0140-03	Beauparc Business Park,Navan,Co. Meath,,Ireland 31 The Dales,Cookstown,Co.
To Other Countries	17 08 02	No	gypsum-based construction materials other 0.0 than those mentioned in 17 08 01	R12	M	Weighted	Abroad	Baron Recycling Ltd,Ni 070049	Tyrone,BT80 8TF,United Kingdom 129A Coolkeeran Road,Loughguile,Ballymean, Co. Antrim BT44 9JL,United Kingdom
To Other Countries	17 08 02	No	gypsum-based construction materials other 0.0 than those mentioned in 17 08 01	R12	M	Weighted	Abroad	Lavery (Patrick),LN/11/69/T	23 Downpatrick Road,Killough,Co. Down,BT30 7QB,United Kingdom
To Other Countries	17 08 02	No	gypsum-based construction materials other 0.0 than those mentioned in 17 08 01	R12	M	Weighted	Abroad	MacNabb Bros. Waste Disposal Ltd,LN/09/111/M	Beauparc Business Park,Navan,Co. Meath,,Ireland
Within the Country	17 09 04	No	mixed construction and demolition wastes other than those mentioned in 17 09 01, 17 214.18 09 02 and 17 09 03	R12	M	Weighted	Offsite in Ireland	Nurendale,W0140-03	Conway Port Industrial Estate,Bollamery,Murrough, Co. Wicklow,Ireland
Within the Country	19 12 02	No	2612.76 ferrous metal	R12	M	Weighted	Offsite in Ireland	Multimetals,WFP-WW-09- 0014-01	Block 402 Jordanstown Drive,Greenogue Industrial Estate,Rathcoole,Co. Dublin,Ireland
Within the Country	19 12 02	No	0.0 ferrous metal	R12	M	Weighted	Offsite in Ireland	Electrical Waste Management Ltd,WFP-DS- 09-0012-01	Beauparc Business Park,Navan,Co. Meath,,Ireland
Within the Country	19 12 02	No	0.0 ferrous metal	R12	M	Weighted	Offsite in Ireland	Nurendale,W0140-03	Kiffagh,Crosserlough,Ballyja mesduff,Co. Cavan,Ireland
Within the Country	19 12 02	No	0.0 ferrous metal	R12	M	Weighted	Offsite in Ireland	Wilton Waste Recycling Ltd,WFP-CN-10-0005-01(1)	Beauparc Business Park,Navan,Co. Meath,,Ireland
Within the Country	19 12 03	No	0.0 non-ferrous metal	R12	M	Weighted	Offsite in Ireland	Nurendale,W0140-03	Conway Port Industrial Estate,Bollamery,Murrough, Co. Wicklow,Ireland
Within the Country	19 12 03	No	40.61 non-ferrous metal	R12	M	Weighted	Offsite in Ireland	Multimetals,WFP-WW-09- 0014-01	Kiffagh,Crosserlough,Ballyja mesduff,Co. Cavan,Ireland
Within the Country	19 12 03	No	0.0 non-ferrous metal	R12	M	Weighted	Offsite in Ireland	Wilton Waste Recycling Ltd,WFP-CN-10-0005-01(1) St. Margarets Recycling & Transfer Centre Ltd,WFP- FG-13-0002-01	Sandyhills, St. Margarets ,Co. Dublin ,?,Ireland
Within the Country	19 12 03	No	0.96 non-ferrous metal	R4	M	Weighted	Offsite in Ireland	Padraic Thornton Waste Disposal Ltd,WFP-KE-10- 061-01	Oldmilltown,Kill,Co. Kildare,,Ireland
Within the Country	19 12 07	No	0.0 wood other than that mentioned in 19 12 06	R12	M	Weighted	Offsite in Ireland	Nurendale,W0140-03	Beauparc Business Park,Navan,Co. Meath,,Ireland
Within the Country	19 12 07	No	5119.9 wood other than that mentioned in 19 12 06	R12	M	Weighted	Offsite in Ireland	Nurendale,W0140-03	Lower Ballymount Road,Walkinstown,Dublin 12,,Ireland
Within the Country	19 12 07	No	0.0 wood other than that mentioned in 19 12 06	R12	M	Weighted	Offsite in Ireland	Irish Packaging Recycling ,W0263-01	Kinnegad,Co. Westmeath,,Ireland
Within the Country	19 12 10	No	0.0 SRF other wastes (including mixtures of materials) from mechanical treatment of wastes other than those mentioned in 19	R1	M	Weighted	Offsite in Ireland	Lagan Cement,P0487	Beauparc Business Park,Navan,Co. Meath,,Ireland
Within the Country	19 12 12	No	15410.22 12 11	R12	M	Weighted	Offsite in Ireland	Nurendale,W0140-03	Rathdrinagh,Beauparc,Navan, Co. Meath,Ireland
Within the Country	19 12 12	No	0.0 RDF	R12	M	Weighted	Offsite in Ireland	Panda Navan,W0140-03	Lower Ballymount rd,Walkinstown,Dublin 12,,Ireland
To Other Countries	20 01 01	No	12919.36 paper and cardboard	R12	M	Weighted	Abroad	Nurendale Broker,IREAG133- 17	

To Other Countries	20 01 01	No	0.0 paper and cardboard	R12	M	Weighed	Abroad	Nurendale Broker, IREAG133-17	Lower Ballymount rd, Walkinstown, Dublin 12, Ireland Shepherds Drive, Cambane Industrial Estate, Newry Co. Down, BT35 6JQ, United Kingdom		
To Other Countries	20 01 02	No	0.0 glass	R12	M	Weighed	Abroad	Regen, 44110	Glenside Road, Dunmurry, Co. Antrim, BT17 0LH, United Kingdom		
To Other Countries	20 01 08	No	5555.22 biodegradable kitchen and canteen waste	R3	M	Weighed	Abroad	Natural World Products, P0341-10A	55 Cargaclougher Rd, Keady, Co. Armagh, BT60 3RA, United Kingdom		
To Other Countries	20 01 08	No	13700.62 biodegradable kitchen and canteen waste	R3	M	Weighed	Abroad	Natural World Products, P0479/15A	Ballymount Cross, Tallaght, Dublin 24, Ireland		
Within the Country	20 01 08	No	0.0 biodegradable kitchen and canteen waste	R13	M	Weighed	Offsite in Ireland	Nurendale, W0039-02	Ballybeg, Littleton, Co. Tipperary, Ireland		
Within the Country	20 01 08	No	2502.3 biodegradable kitchen and canteen waste	R3	M	Weighed	Offsite in Ireland	Acorn Recycling Ltd, W0249-01			
Within the Country	20 01 35	Yes	discarded electrical and electronic equipment other than those mentioned in 20 01 21 and 20 01 23 containing 1.7 hazardous components	R12	M	Weighed	Offsite in Ireland	KMK Metals Recycling Ltd, W0113-03	Cappincur Industrial Estate, Daingean Road, Tullamore, Co. Offaly, Ireland	KMK Metals, W0113-03, Cappincur Industrial Estate, Daingean Road, Tullamore, Co. Offaly, Ireland	Cappincur Industrial Estate, Daingean Road, Tullamore, Co. Offaly, Ireland
Within the Country	20 01 36	No	discarded electrical and electronic equipment other than those mentioned in 20 01 21, 20 01 23 and 20 01 35	R12	M	Weighed	Offsite in Ireland	KMK Metals Recycling Ltd, W0113-03	Cappincur Industrial Estate, Daingean Road, Tullamore, Co. Offaly, Ireland		
Within the Country	20 01 36	No	discarded electrical and electronic equipment other than those mentioned in 20 01 21, 20 01 23 and 20 01 35	R12	M	Weighed	Offsite in Ireland	Wilton Waste Recycling Ltd, WFP-CN-10-0005-01(1)	Kiffagh, Crosserlough, Ballyjamesduff, Co. Cavan, Ireland		
Within the Country	20 01 39	No	334.36 plastics	R12	M	Weighed	Offsite in Ireland	Irish Packaging Recycling, W0263-01	Lower Ballymount Road, Walkinstown, Dublin 12, Ireland Clermont Business Park, Haynestown		
Within the Country	20 01 39	No	19.86 plastics	R12	M	Weighed	Offsite in Ireland	Leinster Environmental, WFP-LH-11-0002-01	TD, Haggardstown, Dundalk Co. Louth, Ireland		
Within the Country	20 02 01	No	163.02 biodegradable waste	R3	M	Weighed	Offsite in Ireland	Bord Na Mona, W0198.01	Kildare, Ireland Larch Hill		
Within the Country	20 02 01	No	484.66 biodegradable waste	R3	M	Weighed	Offsite in Ireland	Enrich, WFP-MH-08-0004-02	Stud, Newtownrathganley, Kildare, Co. Meath, Ireland		
Within the Country	20 02 01	No	0.0 biodegradable waste	R13	M	Weighed	Offsite in Ireland	Nurendale, W0039-02	Ballymount Cross, Tallaght, Dublin 24, Ireland		
Within the Country	20 03 01	No	0.0 mixed municipal waste	R13	M	Weighed	Offsite in Ireland	Nurendale, W0039-02	Ballymount Cross, Tallaght, Dublin 24, Ireland		
Within the Country	20 03 01	No	0.0 mixed municipal waste	D1	M	Weighed	Offsite in Ireland	Whiteriver Landfill, W0060-02	Dunleer, Co. Louth, Ireland Merrywell Business Park, Ballymount, Dublin 12, Ireland		
Within the Country	20 03 01	No	20283.16 Dry Recyclables	R12	M	Weighed	Offsite in Ireland	Dublin City Council MRF, W0238-01	The Kerries, Tralee, Co. Kerry, Ireland		
Within the Country	20 03 01	No	0.0 Dry Recyclables	R12	M	Weighed	Offsite in Ireland	Dillon waste and recycling, WFP KY 10-001	Lower Ballymount Road, Walkinstown, Dublin 12, Ireland		
Within the Country	20 03 01	No	842.56 Dry Recyclables	R12	M	Weighed	Offsite in Ireland	Irish Packaging Recycling Ltd, W0263-01	Aughacurreen, Killamey, Co. Kerry, Ireland		
Within the Country	20 03 01	No	0.0 Dry Recyclables	R12	M	Weighed	Offsite in Ireland	Killamey Waste Disposal, W0217-01	Rathdrinagh, Beauparc, Navan, Co. Meath, Ireland		
Within the Country	20 03 01	No	0.0 Dry Recyclables	R13	M	Weighed	Offsite in Ireland	Panda Navan, W0140-03			

Within the Country	20 03 01	No	0.0 Dry Recyclables	R12	M	Weighed	Offsite in Ireland	Thorntons Recycling,WFP-DC-10-0021-02	Unit 51 Henry Road,Park West Business Park,Dublin 12,,Ireland
Within the Country	20 03 01	No	9618.74 mixed municipal waste	R1	M	Weighed	Offsite in Ireland	Indaver,W0167	Carranstown,Duleek,Co. Meath,,Ireland
Within the Country	20 03 01	No	11909.7 Dry Waste	R12	M	Weighed	Offsite in Ireland	Nurendale,W0140-03	Beauparc Business Park,Navan,Co. Meath,,Ireland
Within the Country	20 03 01	No	2180.4 mixed municipal waste	D1	M	Weighed	Offsite in Ireland	Bord na Mona Drehid,W0201-03	Carbury,Co. Kildare,,Ireland
Within the Country	20 03 01	No	25602.47 mixed municipal waste	D1	M	Weighed	Offsite in Ireland	Knockharley Landfill,W0146-02	Knockharley,Navan,Co. Meath,,Ireland
Within the Country	20 03 01	No	0.0 Dry Recyclables	R12	M	Weighed	Offsite in Ireland	Leinster Environmentals,WFP-LH-11-0002-01	Clermont Business Park,Haynestown TD,Haggardstown,Dundaik Co. Louth,Ireland
Within the Country	20 03 01	No	657.04 mixed municipal waste	R12	M	Weighed	Offsite in Ireland	SDCC Baling Station,W0003-03	Road,Walkinstown,Dublin 12,,Ireland
Within the Country	20 03 01	No	0.0 Dry Recyclables	R12	M	Weighed	Offsite in Ireland	Wilton Waste Recycling Ltd,WFP-CN-10-0005-01(1)	Kiffagh,Crosserlough,Ballyjamesduff,Co. Cavan,Ireland
To Other Countries	20 03 01	No	3598.96 Dry Recyclables	R12	M	Weighed	Abroad	Regen.44110	Shepherds Drive,Carnbane Industrial Estate,Newry Co. Down,BT35 6JQ,United Kingdom
Within the Country	17 02 01	No	50.98 wood	R12	M	Weighed	Offsite in Ireland	McKinstry,LN/16/16	Lisduff,Carnbane Business Park,Newry Co. Down,,United Kingdom
Within the Country	17 02 03	No	11.18 plastic	R12	M	Weighed	Offsite in Ireland	Irish Packaging Recycling ,W0263-01	Lower Ballymount Road,Walkinstown,Dublin 12,,Ireland
Within the Country	19 12 07	No	8.86 wood other than that mentioned in 19 12 06	R12	M	Weighed	Offsite in Ireland	Acorn Recycling Ltd,W0249-01	Ballybeg,Littleton,Co. Tipperary,,Ireland
Within the Country	19 12 07	No	667.2 wood other than that mentioned in 19 12 06	R12	M	Weighed	Offsite in Ireland	Clonmel Waste,WFP-TS-11-0001-01	Lawlesstown,Clonmel,Co. Tipperary,,Ireland
Within the Country	19 12 07	No	66.12 wood other than that mentioned in 19 12 06	R12	M	Weighed	Offsite in Ireland	Greenstar Bray,W0053-03	Fassaroe,Bray,Co. Wicklow,,Ireland
Within the Country	19 12 07	No	498.32 wood other than that mentioned in 19 12 06 other wastes (including mixtures of materials) from mechanical treatment of wastes other than those mentioned in 19 12 12	R12	M	Weighed	Offsite in Ireland	McKinstry,LN/16/16	Lisduff,Carnbane Business Park,Newry Co. Down,,United Kingdom
Within the Country	19 12 12	No	200.02 12 11 other wastes (including mixtures of materials) from mechanical treatment of wastes other than those mentioned in 19 12 12	D1	M	Weighed	Offsite in Ireland	Ballynagran Landfill,W0165.02	Ballynagran,Co. Wicklow,,Ireland
Within the Country	19 12 12	No	24.46 12 11 other wastes (including mixtures of materials) from mechanical treatment of wastes other than those mentioned in 19 12 12	R11a	M	Weighed	Offsite in Ireland	Ballynagran Landfill,W0165.02	Ballynagran,Co. Wicklow,,Ireland
Within the Country	19 12 12	No	96.6 12 11 other wastes (including mixtures of materials) from mechanical treatment of wastes other than those mentioned in 19 12 12	R12	M	Weighed	Offsite in Ireland	Greenstar Bray,W0053-03	Fassaroe,Bray,Co. Wicklow,,Ireland
Within the Country	19 12 12	No	2121.32 12 11 other wastes (including mixtures of materials) from mechanical treatment of wastes other than those mentioned in 19 12 12	R1	M	Weighed	Offsite in Ireland	Indaver,W0167	Carranstown,Duleek,Co. Meath,,Ireland
Within the Country	19 12 12	No	172.72 12 11	R10	M	Weighed	Offsite in Ireland	Tara Mines,P0516-03	Knockumber,Navan,Co. Meath,,Ireland

Within the Country	20 01 08	No	285.44 biodegradable kitchen and canteen waste	R3	M	Weighed	Offsite in Ireland	Enviro Grind Ltd,WFP-DL-11-0004-01	Fincasheal,Donegal Road,Pettigo,Co. Donegal,Ireland
Within the Country	20 01 08	No	68.96 biodegradable kitchen and canteen waste	R13	M	Weighed	Offsite in Ireland	Greenstar Millennium Park,W0183-01	Millennium Park,Cappagh Road,Finglas,Dublin 11,Ireland
Within the Country	20 01 08	No	279.38 biodegradable kitchen and canteen waste	R3	M	Weighed	Offsite in Ireland	O'Toole Composting,WFP-CW-14-003-05	Ballinrane,Co. Carlow,....,Ireland
Within the Country	20 01 08	No	560.42 biodegradable kitchen and canteen waste	R3	M	Weighed	Offsite in Ireland	Waddock Composting,WFP-CW-13-001-01	Killamaster,Co. Carlow,....,Ireland
Within the Country	20 01 36	No	discarded electrical and electronic equipment other than those mentioned in 20 01 21, 20 01 23 and 20 01 35	R12	M	Weighed	Offsite in Ireland	Ecycle Management Ltd,WFP-DC-15-0036-01	Jamestown Road,Inchicore,Dublin 8,.,Ireland
Within the Country	20 01 38	No	354.78 wood other than that mentioned in 20 01 37	R12	M	Weighed	Offsite in Ireland	McKinstry,LN/16/16	Lisduff,Carnbane Business Park,Newry Co. Down,.,United Kingdom
Within the Country	20 01 40	No	246.8 metals	R12	M	Weighed	Offsite in Ireland	Multimetals,WFP-WW-09-0014-01	Conway Port Industrial Estate,Bollamey,Murrough,Co. Wicklow,Ireland
Within the Country	20 02 02	No	236.08 soil and stones	R10	M	Weighed	Offsite in Ireland	Tara Mines,P0516-03	Knockumber,Navan,Co. Meath,.,Ireland
Within the Country	20 03 01	No	13365.63 mixed municipal waste	D1	M	Weighed	Offsite in Ireland	Ballynagran Landfill,W0165.02	Ballynagran,Co. Wicklow,....,Ireland
Within the Country	20 03 01	No	26.84 Dry Recyclables	R12	M	Weighed	Offsite in Ireland	Quality Recycling,WFP-TS-12-0002-04	Ballylynch,Carrick-On-Suir,Co. Tipperary,.,Ireland
Within the Country	19 12 04	No	4.58 plastic and rubber	R12	M	Weighed	Offsite in Ireland	Irish Packaging Recycling,W0263-01	Lower Ballymount Road,Walkinstown,Dublin 12,.,Ireland
Within the Country	20 03 07	No	40.42 bulky waste	R12	M	Weighed	Offsite in Ireland	Panda Navan,W0140-04	Rathdrinagh,Beauparc,Navan,Co. Meath,Ireland