



Site: Ballymount Road, Walkinstown, Dublin 12.

Waste Licence Number W0263-01

Annual Environmental Report

01st January 2016 – 31st December 2016

Table of Contents

Table of Contents	2
1.0 Introduction.....	4
1.1 Company details.....	4
1.2 Management Structure	5
1.3 Financial Provision	5
1.4 Environmental Policy.....	5
1.5 Activities.....	6
1.6 Waste Activities carried out at the Facility.....	6
1.7 Water Usage:.....	7
2.0 Summary Information.....	7
2.1 Waste Received.....	7
2.2 Waste Transferred Off-Site for Disposal or Recovery	8
2.3 Summary report on emissions and interpretation of environmental monitoring	8
2.3.1 <i>Surface Water</i>	8
2.3.2 <i>Dust Emissions</i>	8
2.3.3 <i>Noise Emissions</i>	10
2.3.4 <i>Bund, pipe and underground storage tanks integrity</i>	11
2.3.5 <i>Summary of resource and energy consumption</i>	11
2.3.6. <i>Water</i>	11
2.4 Site infrastructure.....	11
2.4.1 <i>In-place</i>	11
2.5 Progress report on proposals developed to minimise water demand.....	12
2.6 PRTR Emission.....	12
3.0 Environmental objectives and targets	13
3.1 Summary of reported incidents and complaints.....	15
3.1.1 <i>Reported Incidents Summary</i>	15
3.1.2 <i>Complaints:</i>	15
3.2 Review of nuisance controls	15

3.2.1 Odour	15
3.2.2 Noise	15
3.2.3 Dust	15
3.2.4 Vermin.....	15
3.2.5 Flies.....	16
3.2.6 Birds.....	16
3.2.7 Litter.....	16
4.0 Development of Procedures on Site.....	16
5.0 Pollution Emission Register.....	17
6.0 Report on Programme for Public Information	17
Appendix A.....	18
Appendix B.....	19
Appendix C.....	20

1.0 Introduction

Panda were granted the EPA Waste Licence W0263-01 on the 26th January 2011. This replaces the Waste Permit WPR 021/2 issued by South Dublin County Council. Under this licence, Panda will be able to process initially 150,000 tonnes per annum. On the 27th of November 2015 section 76(11) amendment to Industrial Emissions Licence was issued to W0263-01 to be read in conjunction with original licence. Appendix A illustrates the current site layout.

1.1 Company details

Licence No: W0263-01

Name: Irish Packaging Recycling Ltd

Address: Ballymount Road,
Walkinstown,
Dublin 12.

Telephone Number: 01 4602011

Fax Number: 01 4602210

Website: www.panda.ie

1.2 Management Structure

There are 25 employees either working directly or indirectly at the facility. Appendix B illustrates the organisational structure of the facility.

1.3 Financial Provision

Costing's for both CRAMP and ELRA has been agreed with the Agency and the surety for financial provision is being considered by the Agency prior to implementation.

1.4 Environmental Policy

In carrying out our function, IPR/Panda acknowledge that our activities impact upon the environment both through routine internal operations and the actions of our staff.

It is Panda's policy to protect the environment during all activities, both on and off-site.

This is achieved by:

- Strategic preparation and implementation of operating procedures (including an emergency response procedure).
- Utilizing BAT (Best Available Technology).
- Actively promoting environmental awareness amongst staff and clients through appropriate training and communication programs.
- Reduce energy use through effective education and awareness and the installation of energy efficient technology where appropriate.
- Implementing a policy of continuous improvement, by means of targeted objectives. All objectives and targets are monitored and up-dated accordingly.

IPR are committed to complying with all relevant environmental regulations and aim to supply a safe competitive and sustainable service with specific regards to the surrounding environment.

1.5 Activities

Under the waste licence W0263-01, IPR conducts the following activities:

Licensed Waste Recovery Activities, in accordance with the Fourth Schedule of the Waste Management Acts, 1996 to 2010

Class 2.

Recycling or reclamation of organic substances which are not used as solvents (including composting and other biological processes) (P).

Class 3.

Recycling or reclamation of metals and metal compounds.

Class 4.

Recycling or reclamation of other inorganic materials.

Class 13.

Storage of waste intended for submission to any activity referred to in a preceding paragraph of this Schedule, other than temporary storage, pending collection, on the premises where such waste is produced.

IPR accept material from commercial and industrial sectors throughout Ireland. The normal facility operating hours are 6am-5pm (Monday-Friday) & 6am-2pm (Saturdays). The facility is licensed to accept non-hazardous wastes only.

1.6 Waste Activities carried out at the Facility

Material accepted and dispatched at the facility is weighed using Genesys weighbridge software. The facility is used as a baling station. The facility accepts predominantly source segregated paper, cardboard, plastic and hangers. No hazardous waste, putrescible waste or liquid wastes are accepted at the facility.

The material is initially sorted in the facility using Forklifts, Shovel and teleporters, then loaded into one of three balers for baling. The resultant bales are stored for onward movement.

There is a dual weighbridge for incoming and outgoing material.

1.7 Water Usage:

Water for dust suppression and fire-fighting is taken from a holding tank located on a neighbouring paper premises. Water to the office and amenities is taken from municipal supply and is metered by the council.

Water usage in the facility consists of:

- Dust Suppression.
- Fire fighting

2.0 Summary Information

2.1 Waste Received

The waste received at the facility from the 1st January 2016 to the 31st December 2016 was 115,499.11 tonnes.

Table 1. Waste received in 2016

EWC Code	Waste Description	Tonnage
20 01 01	Paper and Cardboard	19602.644
20 01 39	Plastic	669.883
20 01 38	Wood	91.258
20 01 11	Textiles	4.7
20 03 01	MMW	1320.583
15 01 01	Paper and Cardboard	80902.857
15 01 02	Plastic Packaging	9791.435
15 01 03	Wood	1852.029
15 01 04	Steel	516.854
15 01 05	Composite Packaging	8.7
15 01 06	Mixed Packaging	575.352
16 01 03	Used Tires	162.83

2.2 Waste Transferred Off-Site for Disposal or Recovery

See Appendix C (PRTR) for the breakdown of the different destinations used for the waste removed off site by EWC Code.

Table 2: Outgoing destination and recovery rate.

Destination	Tonnage	%
Disposal		0
Recovery	110,702.724	100

2.3 Summary report on emissions and interpretation of environmental monitoring

Under Schedule C of the licence W0263-01, IPR are required to monitor storm water emissions, noise and ambient air monitoring (Dust). The following sub-headings detail the results from independent laboratories of the different parameters and the emission limit values ELV's set by the EPA and any complaints and incident that may have occurred during the year.

2.3.1 *Surface Water*

Storm water passes through a silt trap prior to being discharged to the stream to the South of the facility.

2.3.2 *Dust Emissions*

As per schedule B5 for dust deposition limits, there are currently three sampling locations (AD1, AD2 and AD3). Monitoring is required annually on site. Figs 1-3 illustrate dust recordings for 2016.

Fig. 1: Dust emission results for DS1 (AD1) in $\text{mg m}^{-2} \text{d}^{-1}$

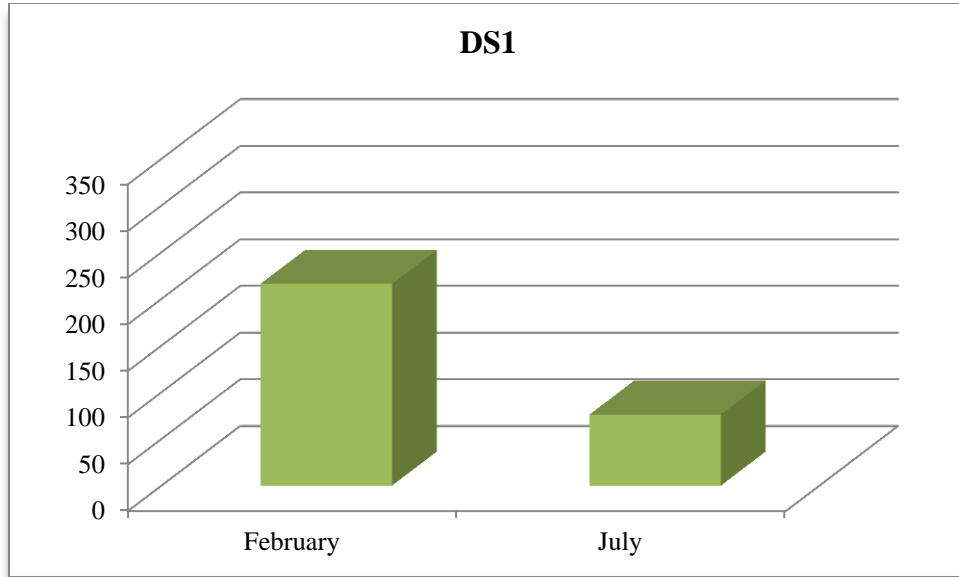


Fig. 2: Dust emission results for DS2 (AD2) in $\text{mg m}^{-2} \text{d}^{-1}$

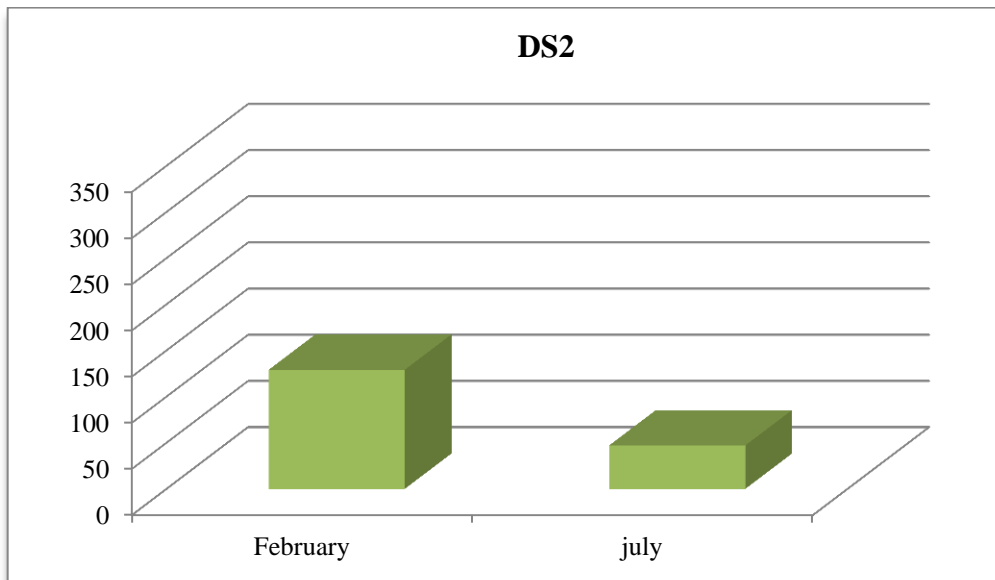
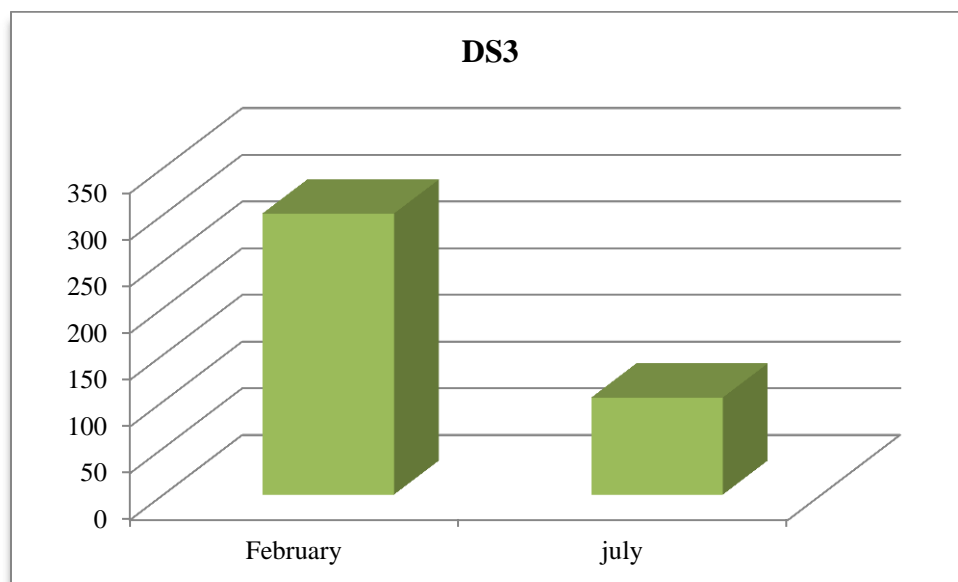


Fig. 3: Dust emission results for DS3 (AD3) in $\text{mg m}^{-2} \text{d}^{-1}$



As per Schedule B.5, the dust deposition limit for the site is $350 \text{ mg m}^{-2} \text{d}^{-1}$. AD1, AD2 and AD3 are well within licenced ELV's.

2.3.3 Noise Emissions

Noise emissions are monitored according to Schedule B.4 and the emission limit values (ELV) set out in Schedule C.5 of the licence. An independent competent consultant was commissioned to conduct the noise sampling for the facility. Table 3 details results of noise monitoring conducted in 2016.

Table 3:

Noise Emissions 2016

Day – readings

Locn	Date	Time	Leq	Lmin	L10	L90	Comments
AN1	8 th Nov 2016	15:30-20:00	59.5	54.3	59.9	55.7	Road traffic dominant at 53/55 dBA. Site truck going pass at 1.5m. site activity less than 55dBA.
AN2	8 th Nov 2016	15:00-18:00	60.1	49.8	62.5	56.6	Site noise less than 50 dBA

Night - readings

Locn	Date	Time	Leq	Lmin	L10	L90	Comments
AN1	8 th – 9 th Nov 16	23:00-01:30	54.7	49.8	55.8	52.0	Road traffic noise
AN2	8 th – 9 th Nov 16	23:00-00:30	52.7	48.6	54.4	51.0	Road traffic noise

2.3.4 Bund, pipe and underground storage tanks integrity

AQS environmental solutions carried out pipeline integrity testing in September 2014.

McBreen Environmental carried out bund integrity testing in March 2016.

2.3.5 Summary of resource and energy consumption

Table 4: Summary of Energy Consumption from 1st January 2016 to 31st December 2016.

Resource	Quantity
Diesel	81252.5 litres
Electricity	658.704 MW hr

2.3.6. Water

Water is obtained from a shared holding tank and water for the office and amenities is obtained from the municipal water supply.

2.4 Site infrastructure

The following are details on infrastructure in the facility.

2.4.1 *In-place*

The current site infrastructure is outlined below (List 1). List 2 details the waste processing equipment used on site.

List 1: Current site infrastructure

1. Offices
2. Dual Weighbridge.
3. One x Waste processing building
4. One sprinkling system
5. Canteen & toilets.
6. Fuel Depot
10. Fencing around the site

List 2: Waste processing equipment

8 x Forklifts

1 x Multi-sweep attachment

1 x Teleporter

1 x Track machines

1 x Shovel

There is sufficient back up within the group if the forklifts, sweeper, shovel, track machine or the teleporter's break down.

2.5 Progress report on proposals developed to minimise water demand

Water usage is minimised on site due to the nature of the materials handled. Therefore there is no requirement to reduce water usage.

2.6 PRTR Emission.

IPR's PRTR emission return is provided in Appendix D.

3.0 Environmental objectives and targets – 2017.

No	Objective & Target	Method of Achievement	Responsibility	Timescale	Complete in 2017
1	Assess the Effectiveness of Nuisance Control Procedures	Continually review and assess all nuisance control procedures to ensure minimal impact on surrounding area	Facility Manager	Ongoing	Continuous
		Ensure yards are cleaned at the end of each working day	Operatives	Ongoing	Continuous
2	Prevent Water Pollution from Run-Off	Surface Water plug to be checked weekly	Facility Manager	Ongoing	Continuous
		Ensure all gullies are maintained and regularly cleaned	Facility Manager/ Operatives	Ongoing	Continuous
		Pipeline Integrity test to be completed	Facility Manager	September 2014	Sept 2017
		Install Class I full retention separator	Facility Manager	Feb 2013	Complete
		A bund integrity test is to be completed.	Facility Manager	March 2016	complete
3	Maintain and Develop the Environmental Management System	Maintain EMS Documentation on site	Facility Manager/ Env Dept	Continuous	Continuous
		Up date procedures to reflect operational and control changes	Facility Manager/ Env Dept	Continuous	Continuous

4	Assess Waste Acceptance Procedures so as to minimise volume of erratics	Communicate with customers about the items that are not acceptable in the in-coming wastes	Facility Manager/ Sales Reps	Continuous	Continuous
5	Environmental Monitoring	Implement the Environmental Monitoring Programme specified in the Waste Licence	Facility Manager	Continuous	Continuous
		Investigate any accidents of emission limit values	Facility Manager	Continuous	Continuous
6	Ensure and implement a training programme	Identify staff training requirements and provide relevant training	Facility Manager/ Env Dept	Continuous	Continuous
7	To control any emergencies that may arise at the facility	Review and Update the Emergency Response Procedure	Facility Manager/ Env Dept	annual	April 2017
8	Prepare a Standard Operating Procedures Manual	Update the SOP manual relevant to site operations	Facility Manager/ Env Dept	Annual	April 2017
9	Ensure lighting in waste handling buildings provide sufficient lighting so as to assess incoming waste	Clean all light fittings in waste handling buildings	Environmental Manager/ Yard Supervisor	Annual	August 2017
10	Office Recycling	Implement office recycling	Office Manager/ Environmental Department	Continuous	Continuous
		Continuation of training regarding office recycling	Office Manager/ Environmental Department	Continuous	Continuous
11	Fire Detection	Install additional alarm sounder	Facility Manager	December 2017	December 2017

3.1 Summary of reported incidents and complaints

3.1.1 Reported Incidents Summary

No incidents occurred during this licence in 2016.

3.1.2 Complaints:

No complaints occurred during this licence in 2016.

3.2 Review of nuisance controls

3.2.1 Odour

There is minimal risk of odour nuisance due to the nature of the waste accepted at the facility. However, IPR's in house Multi-sweeper cleans the concreted yard routinely throughout the day.

3.2.2 Noise

The monitoring results showed that noise is not a nuisance, as only bobcats, teleporters and forklifts are operational on site.

3.2.3 Dust

A dust suppression system is installed in the shed and on the external (South-western side) of the building. The Multi-sweeper is frequently used on all concreted yards. Fire hoses are also available to spray water on concreted yards as required.

3.2.4 Vermin

A file on vermin control is maintained in the office. A sub-contractor is used to control any vermin on site.

3.2.5 Flies

Good housekeeping practices are used to prevent fly infestations. The yard is kept clean using a road sweeper and all waste for disposal is removed from the facility within 48 hours, or 72 hours in the case of a bank holiday weekends.

3.2.6 Birds

In order to avoid having birds as a nuisance, litter control is practised at all times, this includes regular litter patrols. Birds are not attracted, due to the nature of the material handled on site.

3.2.7 Litter

A designated member of staff carries out litter inspections of the facility regularly and gathers any litter deposited. The yard is kept clean using a Mutli-sweeper

4.0 Development of Procedures on Site

The Environmental Management System has been developed and includes the following Standard Operating Procedure;

- Corrective Action;
- Daily Site Inspections;
- Nuisance Management;
- Emergency Response;
- Unacceptable Waste;
- Communications Programme;
- Storage of Fuels and Oils;
- Training and Awareness;
- Environmental Complaints;

A Daily Site Inspection Sheet has been developed to record any potential nuisance on or points to note including a map of the facility for reference as to the location of the nuisance.

5.0 Pollution Emission Register

After consulting the PERL list IPR are not using any substance that is listed at present.

6.0 Report on Programme for Public Information

IPR have a shared website with their sister company Panda. The website was recently re-developed; one of the features is an Environmental page where the following can be downloaded,

- Facility licences (W0140-04, W0261-02, **W0263-01**)
- Multi-regional Waste collection permit (NWCPO-14-11326-03),
- Environmental Policy,

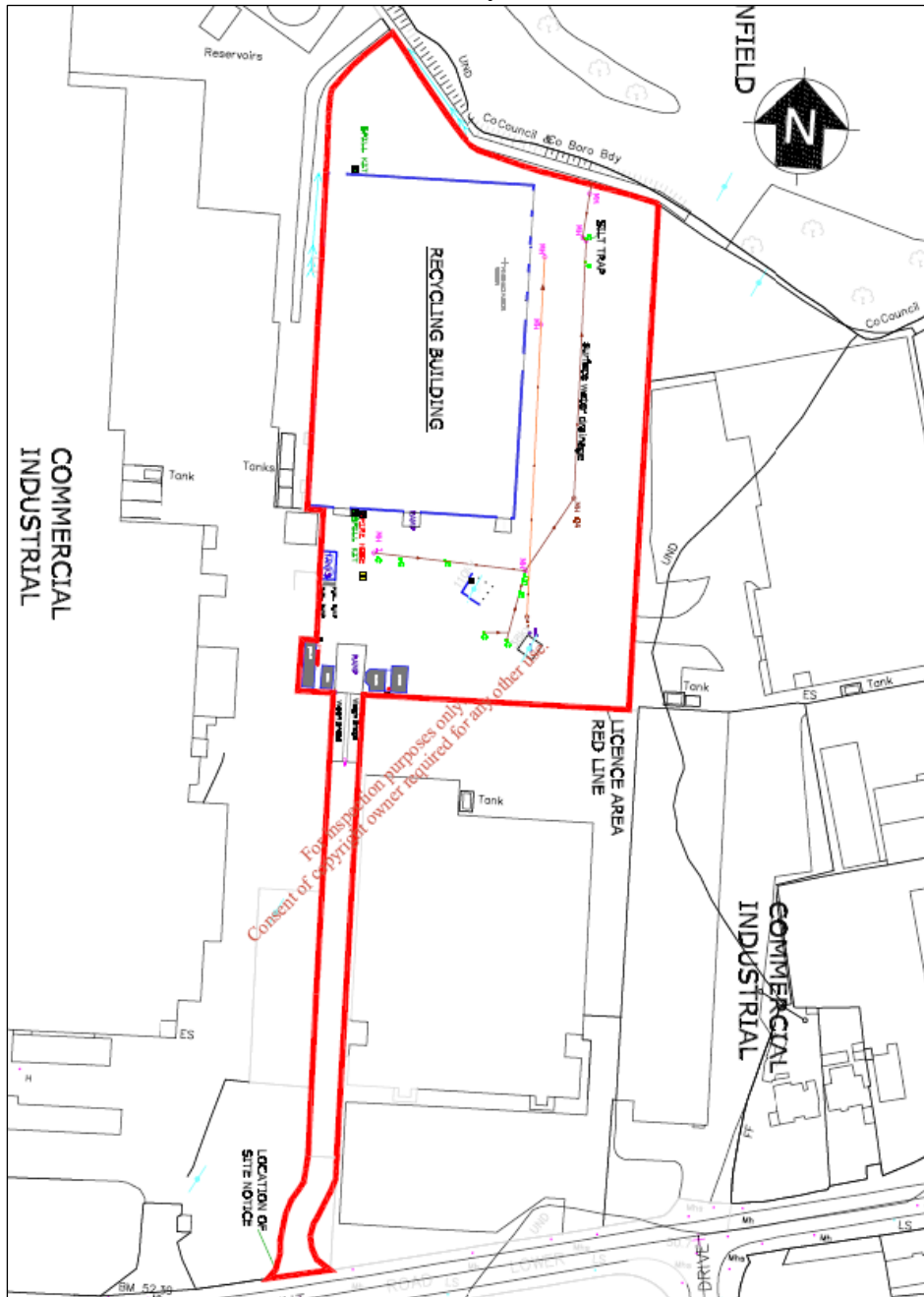
Recycling certificates are issued to customers, on request, so that they can determine their recycling on a monthly basis.

During the reporting period there were no requests from members of the public to inspect any Environmental Records.

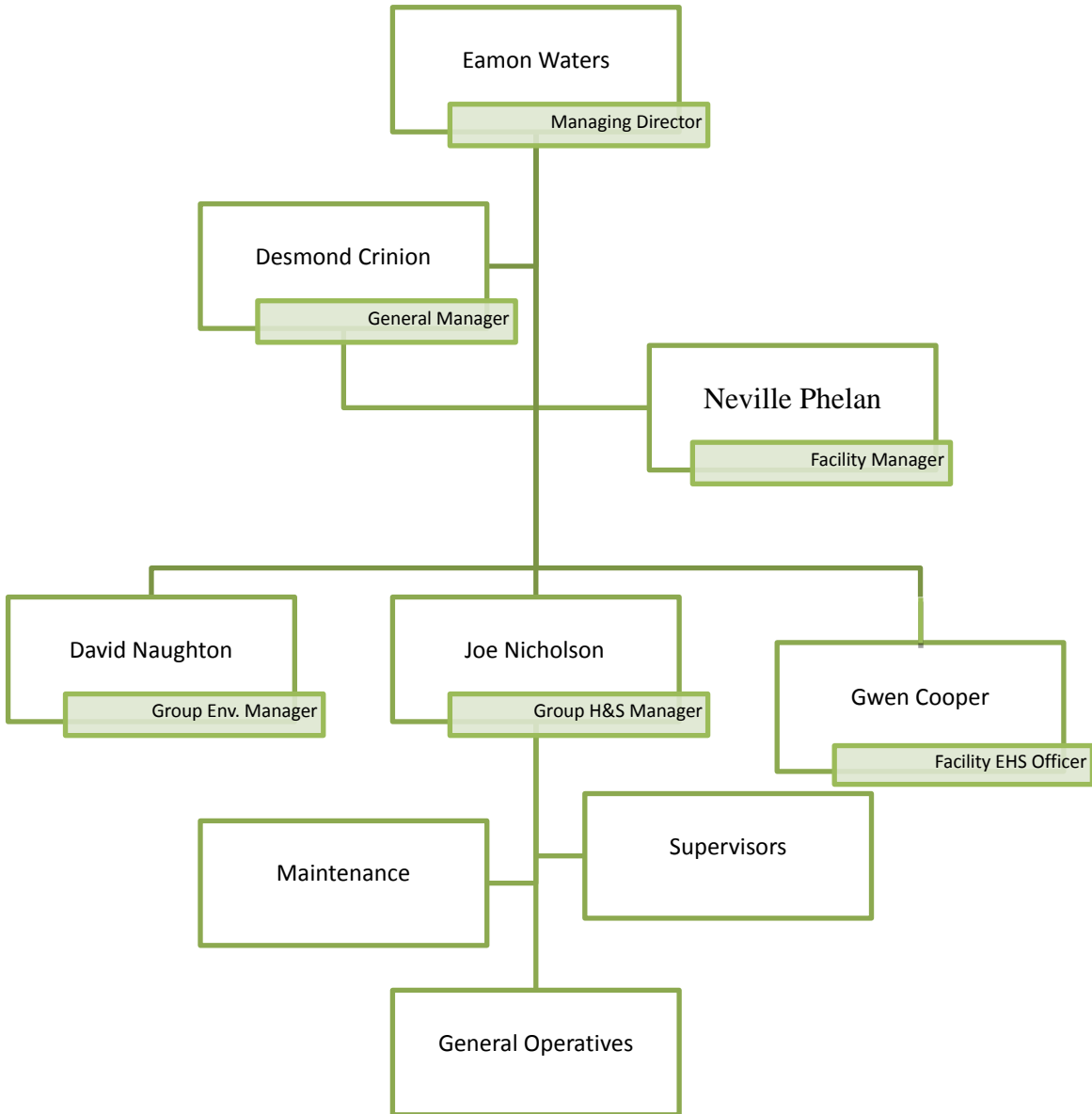
The information in the Annual Environmental Report is true and accurate representation of the activities conducted by IPR in 2016.

Appendix A

Site Layout



Appendix B



Appendix D

PRTR



| PRTR# : W0263 | Facility Name : Irish Packaging Recycling | Filename : W0263_2016 PRTR.xls | Return Year : 2016 |

[Guidance to completing the PRTR workbook](#)

PRTR Returns Workbook

Version 1.1.19

REFERENCE YEAR	2016
-----------------------	------

1. FACILITY IDENTIFICATION

Parent Company Name	Irish Packaging Recycling
Facility Name	Irish Packaging Recycling
PRTR Identification Number	W0263
Licence Number	W0263-01

Classes of Activity

No.	class_name
-	Refer to PRTR class activities below

Address 1	Ballymount Road
Address 2	Walkinstown
Address 3	Dublin 12
Address 4	
	Dublin
Country	Ireland
Coordinates of Location	-6.34193 53.31824
River Basin District	IEEA
NACE Code	3832
Main Economic Activity	Recovery of sorted materials
AER Returns Contact Name	Joe Nicholson
AER Returns Contact Email Address	joe.nicholson@ipr.ie
AER Returns Contact Position	ehs
AER Returns Contact Telephone Number	0860226109
AER Returns Contact Mobile Phone Number	0860226109
AER Returns Contact Fax Number	
Production Volume	0.0
Production Volume Units	
Number of Installations	0
Number of Operating Hours in Year	0
Number of Employees	25
User Feedback/Comments	
Web Address	

4.1 RELEASES TO AIR

[Link to previous years emissions data](#)

[PRTR#: W0263 | Facility Name: Irish Packaging Recycling | Filename: W0263_2016 PRTR.xls | Return Year: 2016 |

21/03/2017 12:37

SECTION A : SECTOR SPECIFIC PRTR POLLUTANTS

RELEASES TO AIR					Please enter all quantities in this section in KGs			
POLLUTANT		METHOD			ADD EMISSION POINT	QUANTITY		
No. Annex II	Name	M/C/E	Method Used		Emission Point 1	T (Total) KG/Year	A (Accidental) KG/Year	F (Fugitive) KG/Year
		Method Code	Designation or Description					
					0.0	0.0	0.0	0.0

ADD NEW ROW DELETE ROW * * Select a row by double-clicking on the Pollutant Name (Column B) then click the delete button

SECTION B : REMAINING PRTR POLLUTANTS

RELEASES TO AIR					Please enter all quantities in this section in KGs			
POLLUTANT		METHOD			ADD EMISSION POINT	QUANTITY		
No. Annex II	Name	M/C/E	Method Used		Emission Point 1	T (Total) KG/Year	A (Accidental) KG/Year	F (Fugitive) KG/Year
		Method Code	Designation or Description					
					0.0	0.0	0.0	0.0

ADD NEW ROW DELETE ROW * * Select a row by double-clicking on the Pollutant Name (Column B) then click the delete button

SECTION C : REMAINING POLLUTANT EMISSIONS (As required in your Licence)

RELEASES TO AIR					Please enter all quantities in this section in KGs					
POLLUTANT		METHOD			ADD EMISSION POINT	QUANTITY				
Pollutant No.	Name	M/C/E	Method Used		Emission Point 1	Emission Point 2	Emission Point 3	T (Total) KG/Year	A (Accidental) KG/Year	F (Fugitive) KG/Year
		Method Code	Designation or Description							
					0.05	0.03	0.07	0.15	0.0	0.0

ADD NEW ROW DELETE ROW * * Select a row by double-clicking on the Pollutant Name (Column B) then click the delete button

4.2 RELEASES TO WATERS

[Link to previous years emissions data](#)

| PRTR# : W0263 | Facility Name : Irish Packaging Recycling | Filename : W0263_2016 PRTR.xls | Return Year : 2016 |

21/03/2017 12:37

SECTION A : SECTOR SPECIFIC PRTR POLLUTANTS

Data on ambient monitoring of storm/surface water or groundwater, conducted as part of your licence requirements, should NOT be submitted under AER / PRTR Reporting a

RELEASES TO WATERS					Please enter all quantities in this section in KGs			
POLLUTANT					ADD EMISSION POINT	QUANTITY		
No. Annex II	Name	M/C/E	Method Used		Emission Point 1	T (Total) KG/Year	A (Accidental) KG/Year	F (Fugitive) KG/Year
			Method Code	Designation or Description				
					0.0	0.0	0.0	0.0

ADD NEW ROW DELETE ROW * * Select a row by double-clicking on the Pollutant Name (Column B) then click the delete button

SECTION B : REMAINING PRTR POLLUTANTS

RELEASES TO WATERS					Please enter all quantities in this section in KGs			
POLLUTANT					ADD EMISSION POINT	QUANTITY		
No. Annex II	Name	M/C/E	Method Used		Emission Point 1	T (Total) KG/Year	A (Accidental) KG/Year	F (Fugitive) KG/Year
			Method Code	Designation or Description				
					0.0	0.0	0.0	0.0

ADD NEW ROW DELETE ROW * * Select a row by double-clicking on the Pollutant Name (Column B) then click the delete button

SECTION C : REMAINING POLLUTANT EMISSIONS (as required in your Licence)

RELEASES TO WATERS					Please enter all quantities in this section in KGs			
POLLUTANT					ADD EMISSION POINT	QUANTITY		
Pollutant No.	Name	M/C/E	Method Used		Emission Point 1	T (Total) KG/Year	A (Accidental) KG/Year	F (Fugitive) KG/Year
			Method Code	Designation or Description				
					0.0	0.0	0.0	0.0

ADD NEW ROW DELETE ROW * * Select a row by double-clicking on the Pollutant Name (Column B) then click the delete button

4.3 RELEASES TO WASTEWATER OR SEWER

[Link to previous years emissions data](#)

| PRTR#: W0263 | Facility Name : Irish Packaging Recycling | Filename : W0263_2016 PRTR.xls

21/03/2017 12:40

SECTION A : PRTR POLLUTANTS

OFFSITE TRANSFER OF POLLUTANTS DESTINED FOR WASTE-WATER TREATMENT OR SEWER					Please enter all quantities in this section in KGs			
POLLUTANT		METHOD			ADD EMISSION POINT	QUANTITY		
No. Annex II	Name	M/C/E	Method Used		Emission Point 1	T (Total) KG/Year	A (Accidental) KG/Year	F (Fugitive) KG/Year
			Method Code	Designation or Description				
					0.0	0.0	0.0	0.0
ADD NEW ROW		DELETE ROW *			* Select a row by double-clicking on the Pollutant Name (Column B) then click the delete button			

SECTION B : REMAINING POLLUTANT EMISSIONS (as required in your Licence)

OFFSITE TRANSFER OF POLLUTANTS DESTINED FOR WASTE-WATER TREATMENT OR SEWER					Please enter all quantities in this section in KGs			
POLLUTANT		METHOD			ADD EMISSION POINT	QUANTITY		
Pollutant No.	Name	M/C/E	Method Used		Emission Point 1	T (Total) KG/Year	A (Accidental) KG/Year	F (Fugitive) KG/Year
			Method Code	Designation or Description				
					0.0	0.0	0.0	0.0
ADD NEW ROW		DELETE ROW *			* Select a row by double-clicking on the Pollutant Name (Column B) then click the delete button			

4.4 RELEASES TO LAND

[Link to previous years emissions data](#)

| PRTR#: W0263 | Facility Name : Irish Packaging Recycling | Filename : W0263_2016 PRTR.xls | Return Year : 2016 |

21/03/2017 12:40

SECTION A : PRTR POLLUTANTS

RELEASES TO LAND					Please enter all quantities in this section in KGs		
POLLUTANT		METHOD			ADD EMISSION POINT	QUANTITY	
No. Annex II	Name	M/C/E	Method Code	Designation or Description	Emission Point 1	T (Total) KG/Year	A (Accidental) KG/Year
					0.0	0.0	0.0
ADD NEW ROW		DELETE ROW *		* Select a row by double-clicking on the Pollutant Name (Column B) then click the delete button			

SECTION B : REMAINING POLLUTANT EMISSIONS (as required in your Licence)

RELEASES TO LAND					Please enter all quantities in this section in KGs		
POLLUTANT		METHOD			ADD EMISSION POINT	QUANTITY	
Pollutant No.	Name	M/C/E	Method Code	Designation or Description	Emission Point 1	T (Total) KG/Year	A (Accidental) KG/Year
					0.0	0.0	0.0
ADD NEW ROW		DELETE ROW *		* Select a row by double-clicking on the Pollutant Name (Column B) then click the delete button			

5. ONSITE TREATMENT & OFFSITE TRANSFERS OF WASTE | PRTR#: W0263 | Facility Name : Irish Packaging Recycling | Filename : W0263_2016 PRTR.xls | Return Year : 2016 |

21/03/2017 12:40

Please enter all quantities on this sheet in Tonnes

73

Transfer Destination	European Waste Code	Hazardous	Quantity (Tonnes per Year)	Description of Waste	Waste Treatment Operation	Method Used		Location of Treatment	Haz Waste : Name and Licence/Permit No of Next Destination Facility Non Haz Waste: Name and Licence/Permit No of Recoverer/Disposer	Haz Waste : Address of Next Destination Facility Non Haz Waste: Address of Recoverer/Disposer	Name and License / Permit No. and Address of Final Recoverer / Disposer (HAZARDOUS WASTE ONLY)	Actual Address of Final Destination i.e. Final Recovery / Disposal Site (HAZARDOUS WASTE ONLY)
						M/C/E	Method Used					
To Other Countries	15 01 01	No	10562.86	paper and cardboard packaging	R12	M	Weighed	Abroad	Agnail Ltd,Broker	88 Cherrywood Cresent,Clondalkin,Dublin 22,,Ireland		
To Other Countries	15 01 01	No	479.06	paper and cardboard packaging	R12	M	Weighed	Abroad	AES ltd,Broker	cappuncur ind est,cappuncur ,tullamore,co. offaly,Ireland		
To Other Countries	15 01 01	No	895.93	paper and cardboard packaging	R12	M	Weighed	Abroad	cellmark,broker	lilla Bommen 3C,SE-404 39 Gothenburg,Gothenburg,PO Box 11927,Sweden		
To Other Countries	15 01 01	No	739.62	paper and cardboard packaging	R12	M	Weighed	Abroad	Dongguan Huangchong Yinzhou Paper Ind. Com.,Broker - china	huangyong Beidazhou,Dongguan Shi,Guangdong Sheng,,China		
To Other Countries	15 01 01	No	10010.67	paper and cardboard packaging	R12	M	Weighed	Abroad	Mark Lyndon Paper Ent UK Ltd,Broker - China	12 The Triangle,Nottingham,,NG2 1AE,United Kingdom		
To Other Countries	15 01 01	No	9400.88	paper and cardboard packaging	R12	M	Weighed	Abroad	Marwin Environmental Trading Ltd,Broker - India	7 Glyntown Heights,Glanmire,Co. Cork,,Ireland		
To Other Countries	15 01 01	No	5982.24	paper and cardboard packaging	R12	M	Weighed	Abroad	Midland Waste,Broker - China	Proudstown Road,Navan,Co. Meath,,Ireland		
To Other Countries	15 01 01	No	14977.22	paper and cardboard packaging	R12	M	Weighed	Abroad	MLM Ltd,Broker - India	Adamson House,Towers Business Park,Wilmlov Rd Didsbury Manchester,M20 2YY,United Kingdom		
Within the Country	15 01 01	No	225.25	paper and cardboard packaging	R12	M	Weighed	Offsite in Ireland	Rebox ,Exempt	2B Kylemore Ind Est,Ballyfermot,Dublin 10,,Ireland		
Within the Country	15 01 01	No	1.38	paper and cardboard packaging	R12	M	Weighed	Offsite in Ireland	ReCreate Ireland,Exempt - Charity	Block K8,Ballymount Industrial Estate,Dublin,D12,Ireland		
To Other Countries	15 01 01	No	122.98	paper and cardboard packaging	R12	M	Weighed	Abroad	Recycling UK Ltd,Broker	10 portal business park ,Eaton Lane Tarporley,,Cheshire,CW6 9DL,united kingdom		

To Other Countries	15 01 01	No	9152.612 paper and cardboard packaging	R12	M	Weighed	Abroad	Saica Natur, Mill - UK	York Street Mill, Audenshaw, Manchester, M34 5TN, United Kingdom
To Other Countries	15 01 01	No	1055.8 paper and cardboard packaging	R12	M	Weighed	Abroad	Sca, Ernd Recycling, Broker	543 Hythe Lane, Larkfield Aylesford, Kent, M320 7PE, United Kingdom
Within the Country	15 01 01	No	18.0 paper and cardboard packaging	R12	M	Weighed	Offsite in Ireland	Smurfit Recycling, Broker	Ballymount road, Walkinstown, Dublin, Ireland
To Other Countries	15 01 01	No	216.76 paper and cardboard packaging	R12	M	Weighed	Abroad	Vanden Global Ltd, Broker	Unit 807 8/F Mackennycentre, 660 Castel Peak road, Kowloon, Hong Kong
To Other Countries	15 01 01	No	11869.54 paper and cardboard packaging	R12	M	Weighed	Abroad	Vipa Luasanna S.A, Broker	Gaeries Benjamin Constan 1, Case Postable 7700 1002, Lausanne, Switzerland
To Other Countries	15 01 01	No	632.22 paper and cardboard packaging	R12	M	Weighed	Abroad	Wuxi Longchem Paper Co Ltd, Broker / Mill - China	43 Zhongxing West Rd, Loushe Town, Huishan District Wuxi, Jiangsu, China
To Other Countries	15 01 01	No	874.04 paper and cardboard packaging	R12	M	Weighed	Abroad	Zhongshan Rengo Hung Hing Paper Manufacturing Company, Broker / Mill - China	105 national highway west side of Zhongshan, San Qiao Shaxi Town, Zhongshan, China
To Other Countries	15 01 01	No	1803.24 paper and cardboard packaging	R12	M	Weighed	Abroad	Zhongshan Yongfa Paper Industries Co Ltd, Broker / Mill - China	In Zhongshan Sugar Factory, Huangpu Town, Zhongshan City, China
To Other Countries	15 01 02	No	1683.464 plastic packaging	R12	M	Weighed	Abroad	Agnail Ltd, Broker	88 Cherrywood Crescent, Clondalkin, Dublin 22, Ireland
To Other Countries	15 01 02	No	121.94 plastic packaging	R12	M	Weighed	Abroad	Boost Recycling Ltd, Broker	47 Swaffham Road, Burwell, Cambridgeshire, CB25 0AN, United Kingdom
To Other Countries	15 01 02	No	44.06 plastic packaging	R12	M	Weighed	Abroad	Eurokey Recycling Ltd., Broker	Logix Road R D park, Hinckley, LE103BQ, United Kingdom
Within the Country	15 01 02	No	566.66 plastic packaging	R12	M	Weighed	Offsite in Ireland	Leinster Environmental, Wp	2004/03 Dundalk, Co. Louth, Ireland
To Other Countries	15 01 02	No	1058.42 plastic packaging	R12	M	Weighed	Abroad	Environmental, Broker	Leinster Dundalk, Co. Louth, Ireland
To Other Countries	15 01 02	No	23.24 plastic packaging	R12	M	Weighed	Abroad	Marwin Environmental Trading Ltd, Broker - India	7 Glyntown Heights, Glanmire, Co. Cork, Ireland
To Other Countries	15 01 02	No	121.08 plastic packaging	R12	M	Weighed	Abroad	Materia Environment Ltd., Broker	Kipper House, Scilly, Kinsale, Co. Cork, Ireland
To Other Countries	15 01 02	No	1988.36 plastic packaging	R12	M	Weighed	Abroad	MLM Ltd, Broker - China	Adamson House, Towers Business Park, Wilmov Rd Didsbury Manchester, M20 2YY, United Kingdom
To Other Countries	15 01 02	No	263.34 plastic packaging	R12	M	Weighed	Abroad	Monoworld Ltd, Broker - UK	Rushden Road, Sharnbrook, Bedfordshire, MK44 1ND, United Kingdom
Within the Country	15 01 02	No	1.94 plastic packaging	R12	M	Weighed	Offsite in Ireland	Panda Waste Services, W0140-04	Beauparc Business Park, Navan, Co. Meath, Ireland
To Other Countries	15 01 02	No	1246.7 plastic packaging	R12	M	Weighed	Abroad	Peute Recycling BV, Broker - Netherlands	Baanhoekweg 4, 3313 La Dordrecht, Netherlands

To Other Countries	15 01 02	No	247.32 plastic packaging	R12	M	Weighed	Abroad	RBD Plastics GmbH,Broker	Nortorfor Str. 2,24613 Aukrug,....Germany Block K8,Ballymount
Within the Country	15 01 02	No	1.78 plastic packaging	R12	M	Weighed	Offsite in Ireland	ReCreate Ireland,Exempt - Charity	Industrial Estate,Dublin,D12,Ireland
Within the Country	15 01 02	No	23.0 plastic packaging	R12	M	Weighed	Offsite in Ireland	TriTex Core LTD Com.,broker	Eamonn Duggan Ind Est,Athboy, Trim,.,Ireland Unit 807 8/F Mackennycentre,660 Castel Peak road,Kowloon,.,Hong Kong
To Other Countries	15 01 02	No	2288.38 plastic packaging	R12	M	Weighed	Abroad	Vanden Global Ltd,Broker	
To Other Countries	15 01 02	No	226.36 plastic packaging	R12	M	Weighed	Abroad	WRC Recycling,Broker	Auchans Farm,Johnstone, Renfrewshire,PA6 7EE, United Kingdom
To Other Countries	15 01 03	No	33.84 wooden packaging	R12	M	Weighed	Abroad	Agnail Ltd,Broker	88 Cherrywood Crescent,Clondalkin,Dublin 22,.,Ireland
Within the Country	15 01 03	No	25.34 wooden packaging	R12	M	Weighed	Offsite in Ireland	Leinster Environmental,Wp 2004/03	Dundalk,Co. Louth,....Ireland Kipper
Within the Country	15 01 03	No	7.86 wooden packaging	R12	M	Weighed	Offsite in Ireland	Materia Environment Ltd.,TBC	House,Scilly ,Kinsale,Co.Cork,Ireland
Within the Country	15 01 03	No	1291.208 wooden packaging	R12	M	Weighed	Offsite in Ireland	TD Freight Ltd,Broker	Tullycara, Castleblaney,Co. Monaghan,.,Ireland
To Other Countries	15 01 04	No	8.41 metallic packaging	R12	M	Weighed	Abroad	Agnail Ltd,Broker	88 Cherrywood Crescent,Clondalkin,Dublin 22,.,Ireland
Within the Country	15 01 04	No	197.31 metallic packaging	R12	M	Weighed	Offsite in Ireland	multimetal recycling Ltd.,wfp-ww-09-0014-05	Bollamey,the murrough,wicklow,.,ireland Kiffa
To Other Countries	15 01 04	No	12.14 metallic packaging	R12	M	Weighed	Abroad	Wilton Waste Recycling Ltd.,broker	Crosserlough,Ballyjamesduff ,Cavan,.,Ireland
To Other Countries	15 01 04	No	192.88 metallic packaging	R12	M	Weighed	Abroad	Real Alloy,Mill	Westfield Industrial Park ,Swansea,.,SA5 4SF,United Kingdom
To Other Countries	15 01 04	No	185.94 metallic packaging	R12	M	Weighed	Abroad	WRC Recycling,Broker - UK	Auchans Farm,Johnstone, Renfrewshire,PA6 7EE, United Kingdom
Within the Country	15 01 04	No	5.44 metallic packaging	R12	M	Weighed	Offsite in Ireland	o Reilly Recycling,WFP-FG-12-0002-02	unit 30,rosemount business park,blanchardstown,dublin 11,Ireland
Within the Country	15 01 04	No	10.3 metallic packaging	R12	M	Weighed	Offsite in Ireland	St Margarets Recycling and Transfer centre Ltd,WFP-FG-13-0002-01	Sandyhills, St. Margarets,Dublin,.,Ireland
Within the Country	15 01 06	No	105.94 mixed packaging	R12	M	Weighed	Offsite in Ireland	Panda Waste Services,W0140-03	Beauparc Business Park,Navan,.,Co. Meath,Ireland
To Other Countries	16 01 03	No	49.22 end-of-life tyres	R12	M	Weighed	Abroad	Agnail Ltd,Broker	88 Cherrywood Crescent,Clondalkin,Dublin 22,.,Ireland
To Other Countries	16 01 03	No	81.74 end-of-life tyres	R12	M	Weighed	Abroad	MLM Ltd,Broker	Adamson House,Towers Business Park,Wilmlov Rd Didsbury Manchester,M20 2YY,United Kingdom

To Other Countries	01 03	No	81.74 end-of-life tyres	R12	M	Weighed	Abroad	MLM Ltd,Broker	Adamson House,Towers Business Park,Wilmlov Rd Didsbury Manchester,M20 2YY,United Kingdom
To Other Countries	20 01 01	No	333.7 paper and cardboard	R12	M	Weighed	Abroad	Agnail Ltd,Broker	88 Cherrywood Crescent,Clondalkin,Dublin 22,,Ireland
To Other Countries	20 01 01	No	303.46 paper and cardboard	R12	M	Weighed	Abroad	cellmark,broker	lilla Bommen 3C,SE-404 39 Gothenburg,Gothenburg,PO Box 11927,Sweden
To Other Countries	20 01 01	No	1404.8 paper and cardboard	R12	M	Weighed	Abroad	Huhtamaki Lurgan Ltd,Broker	41 Inn Road,Dollingstown,Craigavon,BT667JN,United Kingdom
To Other Countries	20 01 01	No	602.24 paper and cardboard	R12	M	Weighed	Abroad	Kimberly Clark Ltd,Mill - UK	Northfleet Mill Crate Hall road ,Gravesend,Kent,DA119AD, United Kingdom
To Other Countries	20 01 01	No	120.32 paper and cardboard	R12	M	Weighed	Abroad	Mark Lyndon Paper Ent Uk Ltd,Broker - China	12 The Triangle,Nottingham,,NG2 1AE,United Kingdom
To Other Countries	20 01 01	No	684.8 paper and cardboard	R12	M	Weighed	Abroad	Marwin Environmental Trading Ltd,Broker - India	7 Glyntown Heights,Glanmire,Co. Cork,,Ireland
To Other Countries	20 01 01	No	2004.36 paper and cardboard	R12	M	Weighed	Abroad	MLM Ltd,Broker - China	Adamson House,Towers Business Park,Wilmlov Rd Didsbury Manchester,M20 2YY,United Kingdom
To Other Countries	20 01 01	No	2559.49 paper and cardboard	R12	M	Weighed	Abroad	Northwood Recycling Limited,Broker - UK	Grant House,Stafford Park 12,Telford,TF33BJ,United Kingdom
To Other Countries	20 01 01	No	53.34 paper and cardboard	R12	M	Weighed	Abroad	Paper Packaging Company,.	8a Flush Park Ind. Est.,Knockmore,Lisburn,Bt2 8 2DX,United Kingdom
To Other Countries	20 01 01	No	529.32 paper and cardboard	R12	M	Weighed	Abroad	Papers Catalunya S.L,Mill	08785 Vallbona dAnoia,,Barcelona,,Spain
To Other Countries	20 01 01	No	441.06 paper and cardboard	R12	M	Weighed	Abroad	Peute Recycling BV,Broker	Baanhoekweg 4,3313 La Dordrecht,,Netherlands
To Other Countries	20 01 01	No	75.82 paper and cardboard	R12	M	Weighed	Abroad	Saica Natur,Broker - UK	York Street Mill,Audenshaw,Manchester ,M345TN,United Kingdom

To Other Countries	20 01 01	No	3275.92 paper and cardboard	R12	M	Weighed	Abroad	Sca.Emd Recycling,Broker	543 Hythe Lane,Larkfield Aylesford,Kent,M320 7PE,United Kingdom Unit 1 A Kileen Industrial Park,Kileen Road.,Dublin 10.,Ireland
To Other Countries	20 01 01	No	99.5 paper and cardboard	R12	M	Weighed	Abroad	Shred it,Broker - UK	
To Other Countries	20 01 01	No	3883.54 paper and cardboard	R12	M	Weighed	Abroad	Vipa Luasanna S.A,Broker	Gaeries Benjamin Constan 1,Case Postable 7700 1002 ,Lausanne,,Switzerland 88 Cherrywood Cresent,Clondalkin,Dublin 22.,Ireland
To Other Countries	20 01 11	No	28.84 textiles	R12	M	Weighed	Abroad	Agnail Ltd,Broker	Beauparc Business Park,Navan,,Co. Meath,Ireland
Within the Country	20 01 38	No	1.54 wood other than that mentioned in 20 01 37	R12	M	Weighed	Offsite in Ireland	Panda Waste Services,W0140-03	Ballymount Cross,Tallaght,Dublin 24.,Ireland
Within the Country	20 01 38	No	196.8 wood other than that mentioned in 20 01 37	R12	M	Weighed	Offsite in Ireland	Panda Waste Services,W0039-02	Fassaroe,,Bray,co.wicklow, Ireland
Within the Country	20 01 38	No	32.408 wood other than that mentioned in 20 01 37	R12	M	Weighed	Offsite in Ireland	SEHL,w0053-03 Leinster Environmental,Wp 2004/03	Dundalk,Co. Louth,,Ireland 88 Cherrywood Cresent,Clondalkin,Dublin 22.,Ireland
Within the Country	20 01 39	No	252.94 plastics	R12	M	Weighed	Offsite in Ireland		Unit 807 8/F Mackennycentre,660 Castel Peak road,Kowloon,,Hong Kong
To Other Countries	20 01 39	No	443.172 plastics	R12	M	Weighed	Abroad	Agnail Ltd,Broker	
To Other Countries	20 01 39	No	28.9 plastics	R12	M	Weighed	Abroad	Vanden Global Ltd,Broker	Avenue,Clondalkin,Dublin 22.,Ireland
Within the Country	20 03 01	No	12.2 mixed municipal waste	R12	M	Weighed	Offsite in Ireland	Greyhound - "OWN MATERIAL",W0205-01	Proudstown Road,Navan,Co. Meath,,Ireland
Within the Country	20 03 01	No	27.44 mixed municipal waste	R12	M	Weighed	Offsite in Ireland	Midland Waste,W0131-02	Ballymount SDCC Bailing Station,w0003- rd,walkinstown,dublin,d.12,Ir eland
Within the Country	20 03 01	No	0.82 mixed municipal waste	R12	M	Weighed	Offsite in Ireland	03	Beauparc Business Park,Navan,,Co. Meath,Ireland
Within the Country	20 03 01	No	253.42 mixed municipal waste	R12	M	Weighed	Offsite in Ireland	Panda Waste Services,W0140-03	ballymount road,Ballymount cross,dublin,d22,Ireland Fassaroe,,Bray,co.wicklow, Ireland
Within the Country	20 03 01	No	1646.94 mixed municipal waste	R12	M	Weighed	Offsite in Ireland	Panda Waste,W0039-02	
Within the Country	20 03 01	No	271.72 mixed municipal waste	R12	M	Weighed	Offsite in Ireland	SEHL,w0053-03	

ADD NEW ROW | DELETE ROW * | * Select a row by double-clicking the Description of Waste then click the delete button