

## **E.2 Emissions to Surface Water**

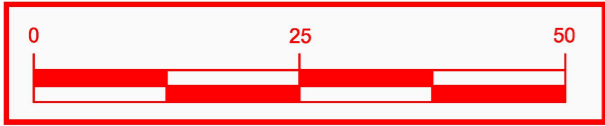
Rainwater run-off from the building roofs, car parks and areas of the yard where wastes were not stored, used to discharge to the municipal storm water sewer and the quality was monitored at two locations (SW-1 and SW-2), as shown on Drawing No.001.

In 2013, the surface water monitoring identified contamination. As part of the investigation Greenstar contacted the Millennium Business Park Management Company who informed it that there was a problem with the flow in the sewer system serving the Business Park, which was causing back flow into the Greenstar site resulting in stagnant and nutrient rich water collecting at the monitoring locations.

Responsibility for addressing the drainage problems rests with the Management Company and, pending the resolution, the surface water run-off from the site has been diverted to the foul sewer. Therefore there are currently no emissions to surface water; however it is intended to recommence emissions to the surface water sewer serving the Business Park once the Management Company has resolved the drainage problems.

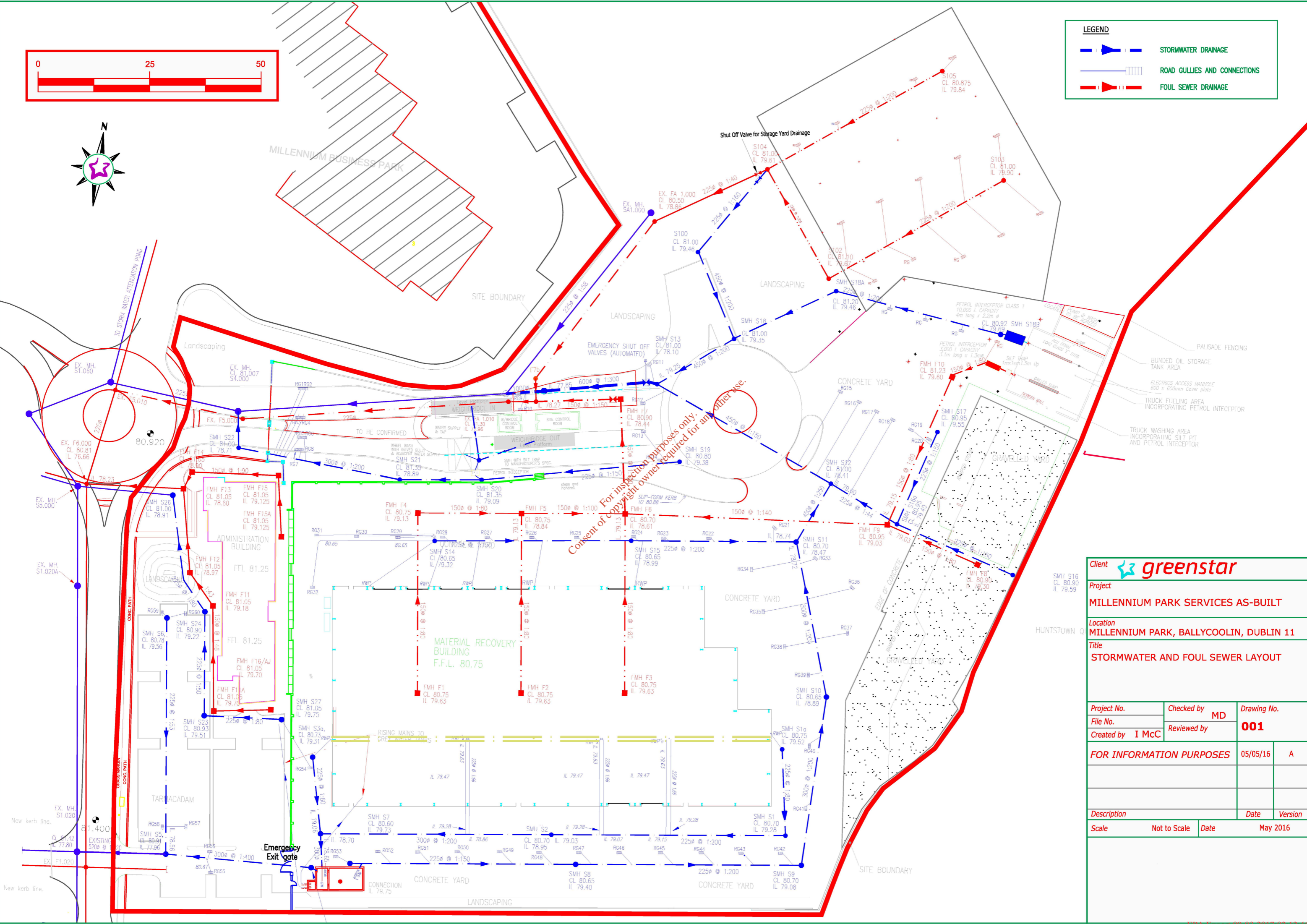
The emission does not contain any substances listed in the Schedule of EPA (Industrial Emissions) (Licensing) Regulations 2013 S.I. No. 137 of 2013.

*For inspection purposes only.  
Consent of copyright owner required for any other use.*



**LEGEND**

- STORMWATER DRAINAGE
- ROAD GULLIES AND CONNECTIONS
- FOUL SEWER DRAINAGE



For inspection purposes only.  
Consent of copyright owner required for any other use.

Client		
Project <b>MILLENNIUM PARK SERVICES AS-BUILT</b>		
Location <b>MILLENNIUM PARK, BALLYCOOLIN, DUBLIN 11</b>		
Title <b>STORMWATER AND FOUL SEWER LAYOUT</b>		
Project No.	Checked by <b>MD</b>	Drawing No.
File No.	Reviewed by	<b>001</b>
Created by <b>I McC</b>		
<b>FOR INFORMATION PURPOSES</b>		05/05/16
		A
Description	Date	Version
Scale	Not to Scale	May 2016