

## ATTACHMENT F6 – NOISE MONITORING

Noise emissions associated with ongoing rock extraction, aggregate processing, concrete / masonry production and waste recovery activities within Roadstone’s landholding at Huntstown are monitored on a quarterly (ie. three monthly) basis at 5 No. locations (designated N1 to N5) of which 4 No. are close to the Roadstone property boundary and 1 No. is at the central infrastructure area.

Noise monitoring is undertaken using a Larson Davis Model 824 Sound Level Meter, calibrated using a Larson Davies Acoustic Calibrator CAL 200 (or equivalent). Noise monitoring locations are indicated in Drawing F6-1.

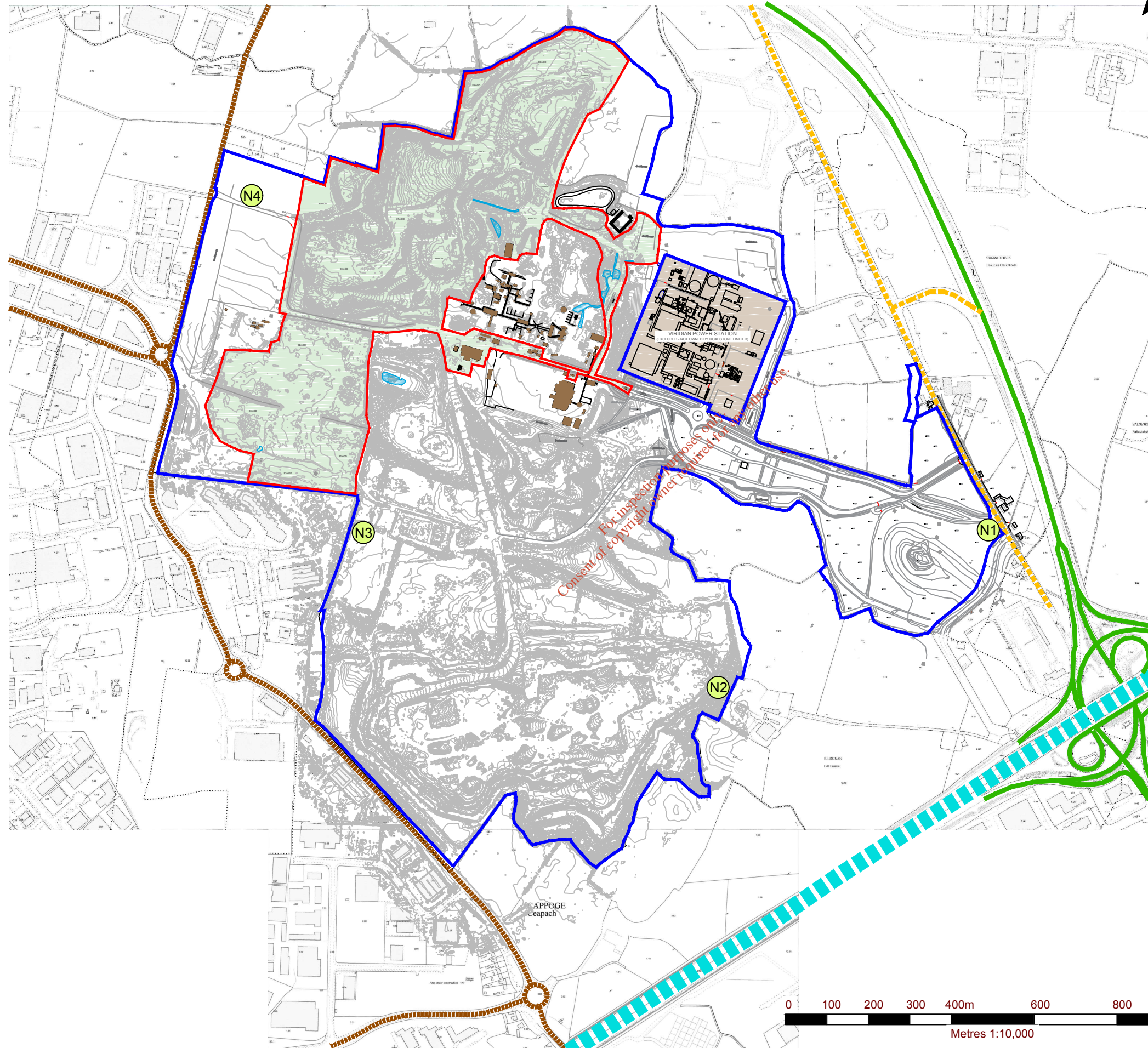
The 5 No. monitoring locations will be monitored for the duration of the quarry backfilling and restoration activities and will also continue for a short duration thereafter, as may be required by the facility closure and aftercare plan.

The existing noise monitoring locations are identified in Table F6-1 below.

**Table F6-1  
Noise Monitoring Points**

Monitoring Reference No.	Parameter	Monitoring Frequency	Location (Grid Co-ordinates)	Accessibility of Sampling Points
N1	Sound Level (dBA)	Quarterly	711992E 741103N	Easy – Open Ground
N2	Sound Level (dBA)	Quarterly	711339E 740723N	Easy – Open Ground
N3	Sound Level (dBA)	Quarterly	710483E 741097N	Easy – Open Ground
N4	Sound Level (dBA)	Quarterly	710214E 741910N	Easy – Open Ground
N5	Sound Level (dBA)	Quarterly	711045E 740954N	Easy – Open Ground

**Note 1** : ITM Co-ordinates



**NOTES**  
 1. EXTRACT FROM 1:2,500 ORDNANCE SURVEY DIGITAL SHEET NO'S. 3062-A, 3062-B, 3062-C, 3062-D, 3063-A, 3063-C, 3130-A & 3130-B.  
 2. ORDNANCE SURVEY IRELAND LICENCE NO. SU 0000716 (C) ORDNANCE SURVEY & GOVERNMENT OF IRELAND

**LEGEND**

	ROADSTONE LIMITED LAND INTEREST (c. 200.3 ha)
	APPLICATION AREA (c. 48.65 ha)
	N2 DUAL CARRIAGEWAY
	NORTH ROAD (R135)
	LOCAL ROAD
	M50 MOTORWAY
	NOISE MONITORING LOCATION

LOCATION	EASTING	NORTHING
N1	711992	741103
N2	711339	740723
N3	710483	741097
N4	710214	741910

**SLR** global environmental solutions

SLR CONSULTING IRELAND  
 7 DUNDUM BUSINESS PARK  
 WINDY ARBOUR  
 DUBLIN 14  
 T: +353-1-2964667  
 F: +353-1-2964676  
 www.slrconsulting.com

**ROADSTONE LIMITED**  
 WASTE LICENCE REVIEW APPLICATION  
**HUNTSTOWN WASTE RECOVERY FACILITY**  
 NORTH ROAD, FINGLAS, DUBLIN 11  
**NOISE MONITORING LOCATIONS**

**DRAWING F6-1**

Scale 1:10,000 @ A3	Date SEPTEMBER 2016
------------------------	------------------------