

ATTACHMENT F2 – AIR QUALITY MONITORING AND SAMPLING

Dust emissions associated with established site activities concrete production activities within Roadstone landholding at Huntstown are monitored on a monthly basis using Bergerhoff dust gauges at 6 No. locations (designated D1 to D6) shown on Drawing No. F2-1. These gauges are located close to emission sources or potentially sensitive receptors located beyond Roadstone’s property boundary.

It is currently envisaged that the existing dust monitoring stations will remain in place and that one additional dedicated monitoring station (designated D7) will be established prior to commencement of waste recovery activities on the western side of the West Quarry (at location indicated in Drawing F3-1).

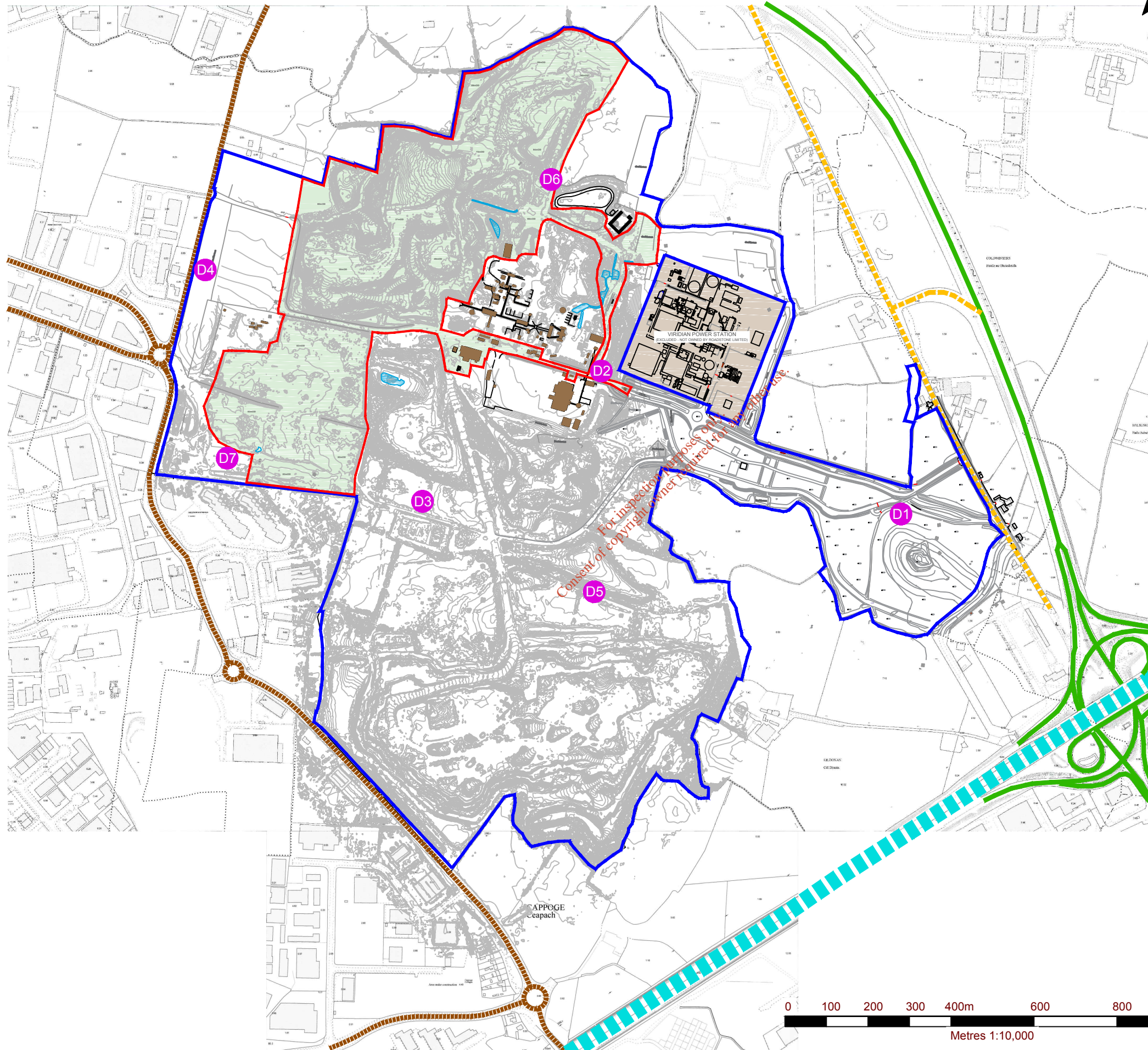
These monitoring stations will be monitored for the duration of the quarry backfilling and restoration activities and will also continue for a short duration thereafter, as required by the facility closure and aftercare plan.

The proposed air quality monitoring locations are identified in Table F2-1 below.

Table F2-1
Air Quality (Dust) Monitoring Points

Monitoring Reference No.	Parameter	Monitoring Frequency	Location (Grid Co-ordinates)	Accessibility of Sampling Points
D1	mg/m ² /day	Quarterly	711784E 7411143N	Easy –open ground
D2	mg/m ² /day	Quarterly	711061E 741488N	Easy –open ground
D3	mg/m ² /day	Quarterly	710629E 741174N	Easy –open ground
D4	mg/m ² /day	Quarterly	710109E 741729N	Easy –open ground
D5	mg/m ² /day	Quarterly	711045E 7410954N	Easy –open ground
D6	mg/m ² /day	Quarterly	710938E 741948N	Easy –open ground
D7	mg/m ² /day	Quarterly	710162E 741278N	Easy –open ground

Note 1 : ITM Co-ordinates



NOTES
 1. EXTRACT FROM 1:2,500 ORDNANCE SURVEY DIGITAL SHEET NO'S. 3062-A, 3062-B, 3062-C, 3062-D, 3063-A, 3063-C, 3130-A & 3130-B.
 2. ORDNANCE SURVEY IRELAND LICENCE NO. SU 0000716 (C) ORDNANCE SURVEY & GOVERNMENT OF IRELAND

LEGEND

- ROADSTONE LIMITED LAND INTEREST (c. 200.3 ha)
- APPLICATION AREA (c. 48.65 ha)
- N2 DUAL CARRIAGEWAY
- NORTH ROAD (R135)
- LOCAL ROAD
- M50 MOTORWAY
- DUST MONITORING LOCATION

LOCATION	EASTING	NORTHING
D1	711784	741143
D2	711061	741488
D3	710629	741174
D4	710109	741729
D5	711045	740954
D6	710938	741948
D7	710162	741278

SLR global environmental solutions

SLR CONSULTING IRELAND
 7 DUNDUM BUSINESS PARK
 WINDY ARBOUR
 DUBLIN 14
 T: +353-1-2964667
 F: +353-1-2964676
 www.slrconsulting.com

ROADSTONE LIMITED
 WASTE LICENCE REVIEW APPLICATION
HUNTSTOWN WASTE RECOVERY FACILITY
 NORTH ROAD, FINGLAS, DUBLIN 11
DUST MONITORING LOCATIONS

DRAWING F2-1

Scale: 1:10,000 @ A3 Date: SEPTEMBER 2016