

ATTACHMENT F2 – AIR QUALITY MONITORING AND SAMPLING

Dust emissions associated with former aggregate production activities within Roadstone’s landholding at Calary Quarry were monitored on a quarterly (ie. three monthly) basis using Bergerhoff dust gauges at 2 No. locations (designated D1 and D2) close to the site boundary, shown on Drawing F2-1. These gauges are also located close to the existing R755 Regional Road and are therefore likely to establish an upper bound on dust emission levels from proposed site activities.

Dust monitoring will be reinstated at the former monitoring locations once soil waste recovery activities commence at the application site. One additional monitoring point (designated D3), also shown on Drawing F2-1, will be established along the north-eastern site boundary to identify any downwind / upslope dust emissions impacts.

The three dust monitoring stations will be monitored for the duration of the proposed waste recovery activity and for a short duration thereafter.

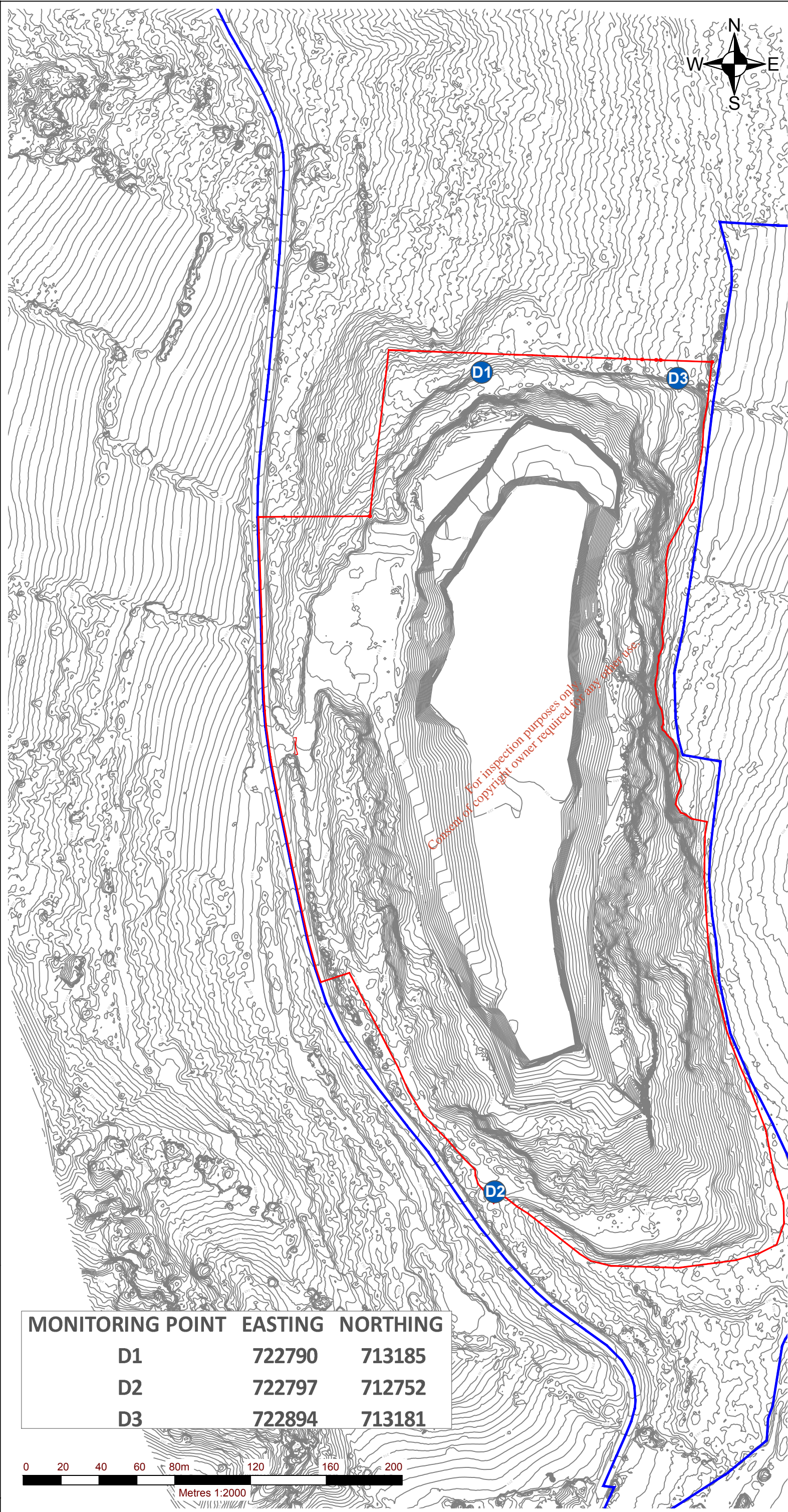
The proposed air quality monitoring locations are identified in Table F2-1 below.

**Table F2-1
Air Quality (Dust) Monitoring Points**

Monitoring Reference No.	Parameter	Monitoring Frequency	Location (Grid Co-ordinates) ¹	Accessibility of Sampling Points
D1	mg/m ² /day	Quarterly	722790E 713185N	Easy –open ground
D2	mg/m ² /day	Quarterly	722797E 712752N	Easy –open ground
D3	mg/m ² /day	Quarterly	722894E 713181N	Easy –open ground

Note 1 : ITM Co-ordinates

For inspection purposes only
Consent of copyright owner required for any other use



NOTES

1. 'Orthomosaic produced from Aerial Photography flown February 2015 by SLR Consulting Ireland (IAA Permit No. 04/2015) www.slrconsulting.com Tel. +353-1-2964667. Orthomosaic produced using Ground Control Points; Related to Irish Transverse Mercator Coordinate System and OS Malin Head Level Datum.

The accuracy of the orthomosaics and the digital elevation models (DEM) strongly depends on the flight height, lighting conditions, availability of textures, image quality, overlap, and type of terrain. Contours / 3D data relates to the surface model and not terrain levels. Typical accuracies: E: 0.05 m; N:0.05 m; Levels: 0.30 m.

All Dimensions and Levels are to be checked on site.

Copyright Reserved.'

2. Ordnance Survey Ireland Licence No. SU 0000716(C)
Ordnance Survey Ireland & Government of Ireland

LEGEND

	ROADSTONE LIMITED LAND INTEREST (c.25.4 Hectares)
	PLANNING APPLICATION AREA (c.9.1 Hectares)
	DUST MONITORING LOCATION

For inspection purposes only
Consent of copyright owner required for any other use

MONITORING POINT	EASTING	NORTHING
D1	722790	713185
D2	722797	712752
D3	722894	713181



SLR

SLR CONSULTING IRELAND
7 DUNDRUM BUSINESS PARK
WINDY ARBOUR
DUBLIN 14
T: +353-1-2964667
F: +353-1-2964676
www.slrconsulting.com

**ROADSTONE LIMITED
WASTE LICENCE APPLICATION**

**INERT SOIL WASTE RECOVERY FACILITY
CALARY QUARRY,
KILMACANOGE, CO. WICKLOW**

DUST MONITORING LOCATIONS

DRAWING F2-1

Scale 1:2,000 @ A3	Date JUNE 2016
-----------------------	-------------------

00180.00109.0.F2-1.Dust Monitoring Locations.dwg