



Drogheda  
Borough Council  
Council Offices  
Fair Street  
Drogheda  
County Louth

Telephone  
Reception  
[041] 987 6100  
[041] 983 3511

Town Clerk's Section  
[041] 987 6195

Engineering Section  
[041] 987 6196

Housing/Planning  
Section  
[041] 987 6197

Accounts Section  
[041] 987 6198

Traffic Section  
[041] 987 6199

Facsimile  
Town Clerk's Section  
[041] 983 9306

Engineering Section  
[041] 987 6184

Housing/Planning  
Section  
[041] 987 6185

Accounts Section  
[041] 987 6185

e-mail  
tclerk@droghedaboro.ie

website  
www.louthcoco.ie

Mr. Eamonn Merriman  
Inspector  
Office of Environmental Enforcement  
Environmental Protection Agency  
Regional Inspectorate  
McCumiskey House  
Richview  
Clonskeagh Road,  
Dublin 14.

14<sup>th</sup> July 2006

Your Ref: M33-1/NC12EM

Inspection Reference Number: 33-1/06/SI14EM

Dear Mr. Merrimann

**Re: Drogheda Landfill Site — Waste License 33-1  
Notification of Non-Compliance**

Further to your letter dated 27<sup>th</sup> June 2006 regarding the above and your site inspection report 33-1/06/SI14EM, we comment as follows:

This report has been prepared to address the **observations** listed in your report during a site inspection undertaken of Drogheda's Landfill Site by the Environmental Protection Agency's Office of Environmental Enforcement (OEE) as detailed in your letter of 27<sup>th</sup> June 2006.

The numbered references below have been cross-referenced to the site inspection's report.

**INSPECTION FINDINGS**

**INSPECTION OBSERVATIONS**

**1. Waste Acceptance and Handling procedure**

With reference to Waste Acceptance and Handling procedure for the Civic Amenity Facility, we hereby confirm that the operator, V&W Recycling, has implemented the revised procedure as

discussed with you during your site inspection 15<sup>th</sup> June 2006  
(Version 1 of the Waste Acceptance and Handling Procedure is  
attached for your information).

The operator will maintain this procedure at the facility's office for  
inspection and make their staff aware of its contents.

**2. Lack of weatherproof Covering for certain Categories of  
Waste Electronic and Electrical Equipment (WEEE)**

Please find attached 2 No. drawings showing a weatherproof  
covering, as proposed by the operator V&W Recycling.

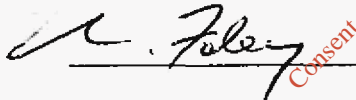
The drawing shows the General Arrangement, details and extent of  
the sheltered area so as to weatherproof the stored WEEE waste.

This sheltered area will provide weatherproof cover, screening  
from road and the prevailing wind plus improve the wastes'  
signage visibility.

Please advise if this proposed sheltered area is acceptable to the  
Office of Environmental Enforcement of the EPA.

Many thanks and kind regards.

Yours sincerely,



Des Foley,  
Town Clerk.

**Attachments:** 2 No. drawings.

# Version 1

## Waste Acceptance and Handling Procedures

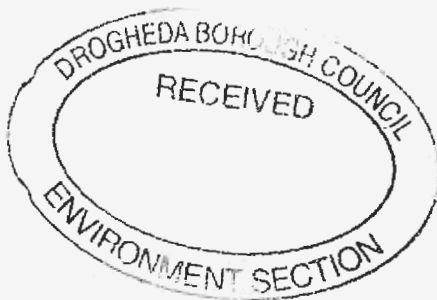
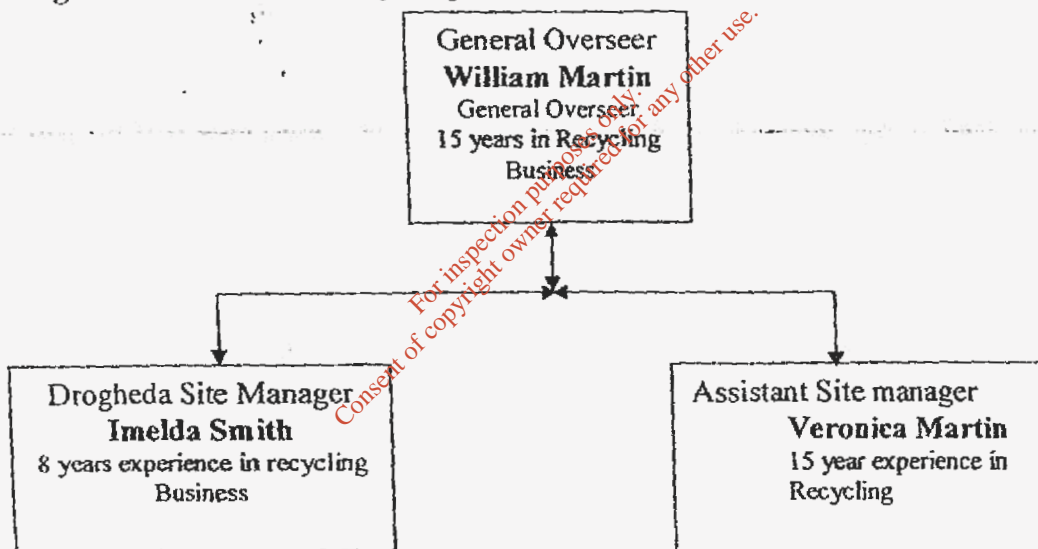
### Drogheda Recycling Centre

Operator: V & W Recycling  
Collon Rd  
Drogheda  
Co Louth

Licensee: Drogheda Borough Council  
Fair St  
Drogheda  
Co Louth

Licence Nr: 33-1  
Date 02/06/2006

#### Management structure of Recycling Centre



**John Smith**  
Senior Site Supervisor  
7 years experience in recycling  
business

Phone. 041 98 03900  
Fax. 041 98 03300

## Operational overview:

Drogheda Recycling Centre shall be open to the public from Mon – Fri 9.30am – 6.00pm.  
Sat 9.00am – 3.00pm.

The site in the main is designed on a split level basis whereby members of the public shall from an upper level sort and post waste into clearly signposted receptacles and the operator shall process and handle wastes at a lower level.

A Recycling building shall be used to handle, contain and bale dry recyclables and external recycling service bays shall deal in the main with bulky wastes. It is proposed that roll-on roll-off containers and static compactor shall be used within the recycling service yard.

A surface mounted weighbridge has been calibrated to weights and measures standard and has a certificate in place for inspection.

The Recycling Centre shall have trained staff from V & W recycling on site at all times to advise and assist the public.

## **Waste handling Procedures:**

### **Waste Record Keeping:**

V & W Recycling would note that Weighbridge dockets shall deal with all requirements of Conditions 3.14(d) to (j). In addition a manual log shall be kept within the weighbridge office located within gatehouse which shall monitor all waste receptacles by unique shall maintain all records with in the office and shall cross reference weighbridge dockets with manual logged entries.

### **Mixed Municipal Waste EWC Code 20 03 01**

Waste dispatched in accordance with 5.9(c) as per registered agreed facility (Whiteriver Landfill)

### **Waste Quarantine Procedure**

- Designated signposted area to rear of building
- Material stored until inspected.
- Upon inspection correct course of action taken
- Material removed off site in accordance with conditions 3.14(d) to (g)

### **Cardboard EWC 20 01 01**

- Materials checked by site staff and if suitable posted to relevant waste acceptance slot within recycling building
- Material lifted within building using teleporter and loaded to baler using trained operatives.
- Bales stored until one load stockpiles and material then loaded to road wagon.
- Documentation produced for material requirements of conditions 3.14 (d) to (g)
- Dispatch to end market as per registered agreed facilities

**Paper – EWC Code 20 01 01**

- Materials checked by site staff and if suitable posted to relevant waste acceptance slot within recycling building
- Material lifted within building using teleporter and loaded to baler using trained operatives.
- Bales stored until one load stockpiles and material then loaded to road wagon
- Documentation produced for material requirements of conditions 3.14 (d) to (g)
- Dispatch to end market as per registered agreed facilities.

**Plastic – EWC Code 20 01 39**

- Materials checked by site staff and if suitable posted to relevant waste acceptance slot within recycling building.
- Material lifted within building using teleporter and loaded to baler using trained operatives.
- Bales stored until one load stockpiles and material then loaded to road wagon
- Documentation produced for material requirements of conditions 3.14 (d) to (g)
- Dispatch to end market as per registered agreed facilities.

**Aluminum Cans – EWC Code 20 01 40**

- Materials checked by site staff and if suitable posted to relevant waste acceptance slot within recycling building
- Material lifted within building using teleporter and loaded to baler using trained operatives.
- Bales stored until one load stockpiles and material then loaded to road wagon
- Documentation produced for material requirements of conditions 3.14 (d) to (g)
- Dispatch to end market as per registered agreed facilities.

**Steel Cans EWC Code 20 01**

- Materials checked by site staff and if suitable places in Roll-on Roll-off container within signposted recycling bay.
- Container monitored to prevent overfill and collected using licence waste carrier.
- Documentation produced for material requirements of conditions 3.14 (d) to (g)
- Dispatch to end market as per registered agreed facilities.

**Textiles and Footwear – EWC Code 20 01 10**

- Materials Checked to ensure suitability and then placed in signed waste acceptance slot within recycling building.
- Manually stack bagged material to container.
- Arrange for collection of container by licence carrier.
- Documentation produced for material requirements of conditions 3.14 (d) to (g)
- Dispatch to end market as per registered agreed facilities

**White Goods – EWC Code 20 01 35 + 20 01 36**

- Material checked by site staff to ensure proper presentation for recycling.
- Member of staff checks for any internal contamination in fridge/freezers
- Material carefully manually handled to designated signposts areas and stored in a safe manner away from railing
- Material collected by designated licence contractor.
- Material manually handled onto road wagon.
- Documentation produced for material requirements of conditions 3.14 (d) to (g)
- Dispatch to end market as per registered agreed facilities.

**WEEE Material – EWC Code 20 01 36**

- Material checked by site staff to ensure proper presentation for recycling.
- Material carefully placed within cages in signposted designated area.
- Material collected by designated licence contractor.
- Material carefully loaded onto road wagon.
- Documentation produced for material requirements of conditions 3.14 (d) to (g)
- Dispatch to end market as per registered agreed facilities.

**Mixed Municipal Waste – EWC Code 20 03 01**

- Waste material checked by site staff before acceptance
- Waste placed into hopper and compacted into enclosed Static Compactor Bin in accordance Conditions 5.9 (f) and (g).
- Waste collected by designated licence contractor and deposited in Whiteriver Landfill (licence no60-2)
- Documentation produced for material requirements of conditions 3.14 (d) to (g)

**Glass EWC Code 20 01 02**

- Glass receptacles posted to designated contained concrete recycling bays within the service yard.
- One bay for each glass colour (Clear, Brown, Green, Blue)
- Glass loaded using teleporter into roll-on roll-off container for end disposal.
- Documentation produced for material requirements of conditions 3.14 (d) to (g)
- Dispatch to end market as per registered agreed facilities

**Wood EWC Code 20 01 38**

- Material checked by site staff and if suitable placed in Roll-on Roll-off container within signposted recycling bay.
- Container monitored to prevent overfill and collected using licensed waste carrier
- Documentation produced for material requirements of conditions 3.14 (d) to (g)
- Dispatch to end market as per registered agreed facilities

**Green Waste Wood, Plant Matter and Other Vegetation EWC Code 20 02 01**

- Material checked by site staff and if suitable placed in Roll-on Roll-off container within signposted recycling bay.
- Container monitored to prevent overflow and collected using licenced waste carrier.
- Materials removed off site within 7 days
- Documentation produced for material requirements of conditions 3.14(d) to(g)
- Dispatch to end market as per registered agreed facilities

**Scrap Metal EWC Code 20 01 40**

- Materials checked by site staff and if suitable placed in Roll-on Roll-off container within signposted recycling bay.
- Container monitored to prevent overflow and collected using licensed waste carrier
- Documentation produced for material requirements of conditions 3.14(d) to(g)
- Dispatch to end market as per registered agreed facilities

It is envisaged that the above catalogue of materials may at some later date be extended in accordance with permitted materials within the site licence. Any extension shall be reflected in a revised waste acceptance and handling procedure.

Signed on behalf V & W recycling

*William Martin*  
Director  
V & W Recycling

For inspection purposes only.  
Consent of copyright owner required for any other use.