

Director of Services – Planning Section
Cork County Council Southern Division
County Hall
Carrigrohane Road
County Cork

Headquarters, PO Box 3000
Johnstown Castle Estate
County Wexford, Ireland
Y35 W821

Céanncheathrú, Bosca Poist 3000
Eastát Chaisleán Bhaile Sheáin
Contae Loch Garman, Éire
Y35 W821

T: +353 53 9160600
F: +353 53 9160699
E: info@epa.ie
W: www.epa.ie

LoCall: 1890 33 55 99

8 April, 2016

W0290 - 01

Dear Sir/Madam,

In accordance with Article 18(1) of the Waste Management (Licensing) Regulations, I am to inform you of the receipt on 31 March, 2016, of documentation relating to a waste licence application from Port of Cork Company in relation to a facility located at Bantry Inner Harbour Development Phase 1, Seafiled & Reenrour West, Bantry, Cork. This application has been assigned register number W0290 - 01. Further details in relation to the application are supplied on the accompanying attachment.

In accordance with Article 18(3) of the above Regulations, a copy of the Environmental Impact Statement (EIS) submitted with this application also accompanies.

I am to advise you that any person may make a submission to the Agency, in writing, in respect of the application, pursuant to Article 15 of the Regulations, which provides as follows:

Extract from the Waste Management (Licensing) Regulations

Submissions to the Agency regarding applications.

15. For the purpose of Section 40(2)(b) of the Acts, a person may make a written submission to the Agency in relation to -
- (i) an application, and
 - (ii) such plans, documents and other information and particulars, including an environmental impact statement, as are submitted by the applicant in accordance with Articles 12, 13, 14 and 16,
- and the Agency shall not give notice of a proposed decision under Section 42(2) of the Acts before the expiry of a period of one month following the date of a relevant -
- (a) acknowledgement in accordance with Article 14(2)(a), or
 - (b) notice in accordance with Article 16(2)(a), or
 - (c) acknowledgement in accordance with Article 16(4),
- whichever such date is the later.

The application, (EIS if relevant) and associated correspondence, including the acknowledgements and notifications referred to in Article 15, are available to view on the Agency Website at www.epa.ie/licensing.

The Agency will have regard to any submission made in accordance with the Regulations and will write, in due course, to each person who makes such a submission, to advise them of the Agency's proposed decision on the application.

In accordance with Article 22(1)(b) of the Waste Management (Licensing) Regulations, the Agency will write to you to inform you of its proposed decision on the application in due course.

If you have no comments to make in relation to this application, there is no requirement for you to reply to this letter.

Yours sincerely,

Dorota Richards

Dorota Richards
Programme Officer
Environmental Licensing Programme
Office of Environmental Sustainability



An Gníomhaireacht um Chaomhnú Comhshaoil

Waste Management Licensing

Details of Waste Licence Application, in accordance with Article 18(2) of the Waste Management (Licensing) Regulations, as of 8th April 2016.

Application Reference/ Register No.:	W0290-01
Applicant Name/ Address:	Port of Cork Company, Custom House Street, Cork.
Name & Location of Facility/ Premises concerned:	Bantry Inner Harbour Development Phase 1, Seafield & Reenrour West, Bantry, Cork.
National grid reference of facility/ Premises	E99040 N48572

Note: The class or classes of activity concerned in this application are detailed on the reverse.

re: Waste Licence Application Reg No: W0290-01, made by Port of Cork Company, Custom House Street, Cork, in respect of a facility/ premises at Seafield & Reenrou West, Bantry, Cork. The class or classes of activity concerned in the above referenced waste licence application as of 8th April 2016, in accordance with the Third and Fourth Schedules to the Waste Management Act 1996 as amended, are as follows (see the description of these activities below):

Third Schedule Class/es: N/A

Fourth Schedule Classes: 5, 11, 13

The applicant has specified the following as the principal activity: R.5/

THIRD SCHEDULE
<i>Waste Disposal Activities</i>
<u>D.1</u> Deposit into or on to land (e.g. landfill, etc.)
<u>D.2</u> Land treatment (e.g. biodegradation of liquid or sludgy discards in soils, etc.)
<u>D.3</u> Deep injection (e.g. injection of pumpable discards into wells, salt domes or naturally occurring repositories, etc.)
<u>D.4</u> Surface impoundment (e.g. placement of liquid or sludgy discards into pits, ponds or lagoons, etc.)
<u>D.5</u> Specially engineered landfill (e.g. placement into lined discrete cells which are capped and isolated from one another and the environment, etc.)
<u>D.6</u> Release into a water body except seas/oceans
<u>D.7</u> Release to seas/oceans including sea-bed insertion
<u>D.8</u> Biological treatment not specified elsewhere in this Schedule which results in final compounds or mixtures which are discarded by means of any of the operations numbered D.1 to D.12
<u>D.9</u> Physico-chemical treatment not specified elsewhere in this Schedule which results in final compounds or mixtures which are discarded by means of any of the operations numbered D.1 to D.12 (e.g. evaporation, drying, calcination, etc.)
<u>D.10</u> Incineration on land
<u>D.11</u> Incineration at sea (this operation is prohibited by EU legislation and international conventions)
<u>D.12</u> Permanent storage (e.g. emplacement of containers in a mine, etc.)
<u>D.13</u> Blending or mixing prior to submission to any of the operations numbered D.1 to D.12 (if there is not other D code appropriate, this can include preliminary operations prior to disposal including pre-processing such as, amongst others, sorting, crushing, compacting, pelletising, drying, shredding, conditioning or separating prior to submission to any of the operations numbered D1 to D12)
<u>D.14</u> Repackaging prior to submission to any of the operations numbered D.1 to D.13
<u>D.15</u> Storage pending any of the operations numbered D.1 to D.14 (excluding temporary storage (being preliminary storage according to the definition of 'collection' in section 5(1)), pending collection, on the site where the waste is produced).

FOURTH SCHEDULE

Waste Recovery Activities

R 1 Use principally as a fuel or other means to generate energy: This includes incineration facilities dedicated to the processing of municipal solid waste only where their energy efficiency is equal to or above -

- 0.60 for installations in operation and permitted in accordance with applicable Community acts before 1 January 2009,

- 0.65 for installations permitted after 31 December 2008,

using the following formula, applied in accordance with the reference document on Best Available Techniques for Waste Incineration:

$$\text{Energy efficiency} = (E_p - (E_f + E_i)) / (0.97 \times (E_w + E_f))$$

where –

‘E_p’ means annual energy produced as heat or electricity calculated with energy in the form of electricity being multiplied by 2.6 and heat produced for commercial use multiplied by 1.1(GJ/year),

‘E_f’ means annual energy input to the system from fuels contributing to the production of steam (GJ/year),

‘E_w’ means annual energy contained in the treated waste calculated using the net calorific value of the waste (GJ/year),

‘E_i’ means annual energy imported excluding E_w and E_f(GJ/year),

‘0.97’ is a factor accounting for energy losses due to bottom ash and radiation.

R 2 Solvent reclamation/regeneration

R 3 Recycling/reclamation of organic substances which are not used as solvents (including composting and other biological transformation processes), which includes gasification and pyrolysis using the components as chemicals

R 4 Recycling/reclamation of metals and metal compounds

R 5 Recycling/reclamation of other inorganic materials, which includes soil cleaning resulting in recovery of the soil and recycling of inorganic construction materials

R 6 Regeneration of acids or bases

R 7 Recovery of components used for pollution abatement

R 8 Recovery of components from catalysts

R 9 Oil re-refining or other reuses of oil

R 10 Land treatment resulting in benefit to agriculture or ecological improvement

R 11 Use of waste obtained from any of the operations numbered R 1 to R 10 .

R 12 Exchange of waste for submission to any of the operations numbered R 1 to R 11 (if there is no other R code appropriate, this can include preliminary operations prior to recovery including pre-processing such as, amongst others, dismantling, sorting, crushing, compacting, pelletising, drying, shredding, conditioning, repackaging, separating, blending or mixing prior to submission to any of the operations numbered R1 to R11)

R 13 Storage of waste pending any of the operations numbered R 1 to R 12 (excluding temporary storage (being preliminary storage according to the definition of ‘collection’ in section 5(1)), pending collection, on the site where the waste is produced)”

1. The first part of the document discusses the importance of maintaining accurate records of all transactions and activities. It emphasizes that this is crucial for ensuring transparency and accountability in the organization's operations.

2. The second part of the document outlines the various methods and tools used to collect and analyze data. It highlights the need for consistent and reliable data collection processes to support effective decision-making.

3. The third part of the document focuses on the role of technology in data management and analysis. It discusses how modern software solutions can streamline data collection, storage, and reporting, thereby improving efficiency and accuracy.

4. The fourth part of the document addresses the challenges associated with data management, such as data quality, security, and privacy. It provides strategies to mitigate these risks and ensure that data is used responsibly and ethically.

5. The fifth part of the document discusses the importance of data governance and the establishment of clear policies and procedures. It stresses that a strong governance framework is essential for maintaining the integrity and reliability of the organization's data assets.

6. The sixth part of the document explores the benefits of data-driven decision-making and how it can lead to improved performance and competitive advantage. It provides examples of successful data-driven initiatives and the key factors for their success.

7. The seventh part of the document discusses the role of data in strategic planning and the development of long-term business goals. It highlights how data can provide valuable insights into market trends and customer behavior, enabling more informed strategic decisions.

8. The eighth part of the document addresses the importance of data literacy and the need for ongoing training and development. It emphasizes that all employees should have the skills and knowledge necessary to effectively use data in their work.

9. The ninth part of the document discusses the role of data in risk management and the identification of potential threats and opportunities. It highlights how data can be used to monitor and assess risks, enabling the organization to take proactive measures to mitigate them.

10. The tenth part of the document concludes by summarizing the key points discussed and emphasizing the overall importance of data in driving organizational success. It encourages the organization to continue to invest in data management and analysis to stay competitive in a rapidly changing market.

Director of Services – Environment Section
Cork County Council Southern Division
County Hall
Carrigrohane Road
County Cork

Headquarters, PO Box 3000
Johnstown Castle Estate
County Wexford, Ireland
Y35 W821

Ceanncheathrú, Bosca Poist 3000
Eastát Chaisleán Bhaile Sheáin
Contae Loch Garman, Éire
Y35 W821

T: +353 53 9160600
F: +353 53 9160699
E: info@epa.ie
W: www.epa.ie

LoCall: 1890 33 55 99

8 April, 2016

W0290 - 01

Dear Sir/Madam,

In accordance with Article 18(1) of the Waste Management (Licensing) Regulations, I am to inform you of the receipt on 31 March, 2016, of documentation relating to a waste licence application from Port of Cork Company in relation to a facility located at Bantry Inner Harbour Development Phase 1, Seafilled & Reenrour West, Bantry, Cork. This application has been assigned register number W0290 - 01. Further details in relation to the application are supplied on the accompanying attachment.

In accordance with Article 18(3) of the above Regulations, a copy of the Environmental Impact Statement (EIS) submitted with this application also accompanies.

I am to advise you that any person may make a submission to the Agency, in writing, in respect of the application, pursuant to Article 15 of the Regulations, which provides as follows:

Extract from the Waste Management (Licensing) Regulations

Submissions to the Agency regarding applications.

15. For the purpose of Section 40(2)(b) of the Acts, a person may make a written submission to the Agency in relation to -
- (i) an application, and
 - (ii) such plans, documents and other information and particulars, including an environmental impact statement, as are submitted by the applicant in accordance with Articles 12, 13, 14 and 16,
- and the Agency shall not give notice of a proposed decision under Section 42(2) of the Acts before the expiry of a period of one month following the date of a relevant -
- (a) acknowledgement in accordance with Article 14(2)(a), or
 - (b) notice in accordance with Article 16(2)(a), or
 - (c) acknowledgement in accordance with Article 16(4),
- whichever such date is the later.

The application, (EIS if relevant) and associated correspondence, including the acknowledgements and notifications referred to in Article 15, are available to view on the Agency Website at www.epa.ie/licensing.

The Agency will have regard to any submission made in accordance with the Regulations and will write, in due course, to each person who makes such a submission, to advise them of the Agency's proposed decision on the application.

In accordance with Article 22(1)(b) of the Waste Management (Licensing) Regulations, the Agency will write to you to inform you of its proposed decision on the application in due course.

If you have no comments to make in relation to this application, there is no requirement for you to reply to this letter.

Yours sincerely,

Dorota Richards

Dorota Richards
Programme Officer
Environmental Licensing Programme
Office of Environmental Sustainability



An Ghníomhaireacht um Chaomhnú Comhshaoil

Waste Management Licensing

Details of Waste Licence Application, in accordance with Article 18(2) of the Waste Management (Licensing) Regulations, as of 8th April 2016.

Application Reference/ Register No.:	W0290-01
Applicant Name/ Address:	Port of Cork Company, Custom House Street, Cork.
Name & Location of Facility/ Premises concerned:	Bantry Inner Harbour Development Phase 1, Seafield & Reenrour West, Bantry, Cork.
National grid reference of facility/ Premises	E99040 N48572

Note: The class or classes of activity concerned in this application are detailed on the reverse.

re: Waste Licence Application Reg No: W0290-01, made by Port of Cork Company, Custom House Street, Cork, in respect of a facility/ premises at Seafiled & Reenrou West, Bantry, Cork. The class or classes of activity concerned in the above referenced waste licence application as of 8th April 2016, in accordance with the Third and Fourth Schedules to the Waste Management Act 1996 as amended, are as follows (see the description of these activities below):

Third Schedule Class/es: N/A

Fourth Schedule Classes: 5, 11, 13

The applicant has specified the following as the principal activity: R.5/

THIRD SCHEDULE
<i>Waste Disposal Activities</i>
<u>D 1</u> Deposit into or on to land (e.g. landfill, etc.)
<u>D 2</u> Land treatment (e.g. biodegradation of liquid or sludgy discards in soils, etc.)
<u>D 3</u> Deep injection (e.g. injection of pumpable discards into wells, salt domes or naturally occurring repositories, etc.)
<u>D 4</u> Surface impoundment (e.g. placement of liquid or sludgy discards into pits, ponds or lagoons, etc.)
<u>D 5</u> Specially engineered landfill (e.g. placement into lined discrete cells which are capped and isolated from one another and the environment, etc.)
<u>D 6</u> Release into a water body except seas/oceans
<u>D 7</u> Release to seas/oceans including sea-bed insertion
<u>D 8</u> Biological treatment not specified elsewhere in this Schedule which results in final compounds or mixtures which are discarded by means of any of the operations numbered D 1 to D 12
<u>D 9</u> Physico-chemical treatment not specified elsewhere in this Schedule which results in final compounds or mixtures which are discarded by means of any of the operations numbered D 1 to D 12 (e.g. evaporation, drying, calcination, etc.)
<u>D 10</u> Incineration on land
<u>D 11</u> Incineration at sea (this operation is prohibited by EU legislation and international conventions)
<u>D 12</u> Permanent storage (e.g. emplacement of containers in a mine, etc.)
<u>D 13</u> Blending or mixing prior to submission to any of the operations numbered D 1 to D 12 (if there is not other D code appropriate, this can include preliminary operations prior to disposal including pre-processing such as, amongst others, sorting, crushing, compacting, pelletising, drying, shredding, conditioning or separating prior to submission to any of the operations numbered D1 to D12)
<u>D 14</u> Repackaging prior to submission to any of the operations numbered D 1 to D 13
<u>D 15</u> Storage pending any of the operations numbered D 1 to D 14 (excluding temporary storage (being preliminary storage according to the definition of 'collection' in section 5(1)), pending collection, on the site where the waste is produced).

FOURTH SCHEDULE

Waste Recovery Activities

R 1 Use principally as a fuel or other means to generate energy: This includes incineration facilities dedicated to the processing of municipal solid waste only where their energy efficiency is equal to or above -

- 0.60 for installations in operation and permitted in accordance with applicable Community acts before 1 January 2009,

- 0.65 for installations permitted after 31 December 2008;

using the following formula, applied in accordance with the reference document on Best Available Techniques for Waste Incineration:

$$\text{Energy efficiency} = (E_p - (E_f + E_i)) / (0.97 \times (E_w + E_f))$$

where -

'E_p' means annual energy produced as heat or electricity calculated with energy in the form of electricity being multiplied by 2.6 and heat produced for commercial use multiplied by 1.1 (GJ/year),

'E_f' means annual energy input to the system from fuels contributing to the production of steam (GJ/year),

'E_w' means annual energy contained in the treated waste calculated using the net calorific value of the waste (GJ/year),

'E_i' means annual energy imported excluding E_w and E_f (GJ/year),

'0.97' is a factor accounting for energy losses due to bottom ash and radiation.

R 2 Solvent reclamation/regeneration

R 3 Recycling/reclamation of organic substances which are not used as solvents (including composting and other biological transformation processes), which includes gasification and pyrolysis using the components as chemicals

R 4 Recycling/reclamation of metals and metal compounds

R 5 Recycling/reclamation of other inorganic materials, which includes soil cleaning resulting in recovery of the soil and recycling of inorganic construction materials

R 6 Regeneration of acids or bases

R 7 Recovery of components used for pollution abatement

R 8 Recovery of components from catalysts

R 9 Oil re-refining or other reuses of oil

R 10 Land treatment resulting in benefit to agriculture or ecological improvement

R 11 Use of waste obtained from any of the operations numbered R 1 to R 10

R 12 Exchange of waste for submission to any of the operations numbered R 1 to R 11 (if there is no other R code appropriate, this can include preliminary operations prior to recovery including pre-processing such as, amongst others, dismantling, sorting, crushing, compacting, pelletising, drying, shredding, conditioning, repackaging, separating, blending or mixing prior to submission to any of the operations numbered R1 to R11)

R 13 Storage of waste pending any of the operations numbered R 1 to R 12 (excluding temporary storage (being preliminary storage according to the definition of 'collection' in section 5(1)), pending collection, on the site where the waste is produced)"

[The page contains extremely faint and illegible text, likely bleed-through from the reverse side of the document. The text is too light to transcribe accurately.]



Environmental Protection Agency
An Ghníomhaireacht um Chaomhnú Comhshaoil

Mr. Gavin McGuire
Environmental Health Officer
Health Service Executive (South)
2nd Floor, Oak House
Lime Tree Avenue, Millennium Park
Naas, County Kildare
Att. Mr. Gavin McGuire

Headquarters, PO Box 3000
Johnstown Castle Estate
County Wexford, Ireland
Y35 W821

Ceanncheathrú, Bosca Poist 3000
Eastát Chaisleán Bhaile Sheáin
Contae Loch Garman, Éire
Y35 W821

T: +353 53 9160600
F: +353 53 9160699
E: info@epa.ie
W: www.epa.ie

LoCall: 1890 33 55 99

8 April, 2016

W0290 - 01

Dear Mr. McGuire,

In accordance with Article 18(1) of the Waste Management (Licensing) Regulations, I am to inform you of the receipt on 31 March, 2016, of documentation relating to a waste licence application from Port of Cork Company in relation to a facility located at Bantry Inner Harbour Development Phase 1, Seafilled & Reenrour West, Bantry, Cork. This application has been assigned register number W0290 - 01. Further details in relation to the application are supplied on the accompanying attachment.

In accordance with Article 18(3) of the above Regulations, a copy of the Environmental Impact Statement (EIS) submitted with this application also accompanies.

I am to advise you that any person may make a submission to the Agency, in writing, in respect of the application, pursuant to Article 15 of the Regulations, which provides as follows:

Extract from the Waste Management (Licensing) Regulations

Submissions to the Agency regarding applications.

15. For the purpose of Section 40(2)(b) of the Acts, a person may make a written submission to the Agency in relation to -
- (i) an application, and
 - (ii) such plans, documents and other information and particulars, including an environmental impact statement, as are submitted by the applicant in accordance with Articles 12, 13, 14 and 16,
- and the Agency shall not give notice of a proposed decision under Section 42(2) of the Acts before the expiry of a period of one month following the date of a relevant -
- (a) acknowledgement in accordance with Article 14(2)(a), or
 - (b) notice in accordance with Article 16(2)(a), or
 - (c) acknowledgement in accordance with Article 16(4),
- whichever such date is the later.

The application, (EIS if relevant) and associated correspondence, including the acknowledgements and notifications referred to in Article 15, are available to view on the Agency Website at www.epa.ie/licensing.

The Agency will have regard to any submission made in accordance with the Regulations and will write, in due course, to each person who makes such a submission, to advise them of the Agency's proposed decision on the application.

In accordance with Article 22(1)(b) of the Waste Management (Licensing) Regulations, the Agency will write to you to inform you of its proposed decision on the application in due course.



If you have no comments to make in relation to this application, there is no requirement for you to reply to this letter.

Yours sincerely,

Dorota Richards

Dorota Richards
Programme Officer
Environmental Licensing Programme
Office of Environmental Sustainability



An Ghníomhaireacht um Chaomhnú Comhshaoil

Waste Management Licensing

Details of Waste Licence Application, in accordance with Article 18(2) of the Waste Management (Licensing) Regulations, as of 8th April 2016.

Application Reference/ Register No.:	W0290-01
Applicant Name/ Address:	Port of Cork Company, Custom House Street, Cork.
Name & Location of Facility/ Premises concerned:	Bantry Inner Harbour Development Phase 1, Seafield & Reenrour West, Bantry, Cork.
National grid reference of facility/ Premises	E99040 N48572

Note: The class or classes of activity concerned in this application are detailed on the reverse.

re: Waste Licence Application Reg No: W0290-01, made by Port of Cork Company, Custom House Street, Cork, in respect of a facility/ premises at Seafiled & Reenrou West, Bantry, Cork. The class or classes of activity concerned in the above referenced waste licence application as of 8th April 2016, in accordance with the Third and Fourth Schedules to the Waste Management Act 1996 as amended, are as follows (see the description of these activities below):

Third Schedule Class/es: N/A

Fourth Schedule Classes: 5, 11, 13

The applicant has specified the following as the principal activity: R.5/

THIRD SCHEDULE
<i>Waste Disposal Activities</i>
<u>D 1</u> Deposit into or on to land (e.g. landfill, etc.)
<u>D 2</u> Land treatment (e.g. biodegradation of liquid or sludgy discards in soils, etc.)
<u>D 3</u> Deep injection (e.g. injection of pumpable discards into wells, salt domes or naturally occurring repositories, etc.)
<u>D 4</u> Surface impoundment (e.g. placement of liquid or sludgy discards into pits, ponds or lagoons, etc.)
<u>D 5</u> Specially engineered landfill (e.g. placement into lined discrete cells which are capped and isolated from one another and the environment, etc.)
<u>D 6</u> Release into a water body except seas/oceans
<u>D 7</u> Release to seas/oceans including sea-bed insertion
<u>D 8</u> Biological treatment not specified elsewhere in this Schedule which results in final compounds or mixtures which are discarded by means of any of the operations numbered D 1 to D 12
<u>D 9</u> Physico-chemical treatment not specified elsewhere in this Schedule which results in final compounds or mixtures which are discarded by means of any of the operations numbered D 1 to D 12 (e.g. evaporation, drying, calcination, etc.)
<u>D 10</u> Incineration on land
<u>D 11</u> Incineration at sea (this operation is prohibited by EU legislation and international conventions)
<u>D 12</u> Permanent storage (e.g. emplacement of containers in a mine, etc.)
<u>D 13</u> Blending or mixing prior to submission to any of the operations numbered D 1 to D 12 (if there is not other D code appropriate, this can include preliminary operations prior to disposal including pre-processing such as, amongst others, sorting, crushing, compacting, pelletising, drying, shredding, conditioning or separating prior to submission to any of the operations numbered D1 to D12)
<u>D 14</u> Repackaging prior to submission to any of the operations numbered D 1 to D 13
<u>D 15</u> Storage pending any of the operations numbered D 1 to D 14 (excluding temporary storage (being preliminary storage according to the definition of 'collection' in section 5(1)), pending collection, on the site where the waste is produced).

ROBRII SCHEDULE

Waste Recovery Activities

R 1 Use principally as a fuel or other means to generate energy: This includes incineration facilities dedicated to the processing of municipal solid waste only where their energy efficiency is equal to or above -

- 0.60 for installations in operation and permitted in accordance with applicable Community acts before 1 January 2009,

- 0.65 for installations permitted after 31 December 2008,

using the following formula, applied in accordance with the reference document on Best Available Techniques for Waste Incineration:

$$\text{Energy efficiency} = (E_p - (E_f + E_i)) / (0.97 \times (E_w + E_f))$$

where –

‘E_p’ means annual energy produced as heat or electricity calculated with energy in the form of electricity being multiplied by 2.6 and heat produced for commercial use multiplied by 1.1(GJ/year),

‘E_f’ means annual energy input to the system from fuels contributing to the production of steam (GJ/year),

‘E_w’ means annual energy contained in the treated waste calculated using the net calorific value of the waste (GJ/year),

‘E_i’ means annual energy imported excluding E_w and E_f(GJ/year),

‘0.97’ is a factor accounting for energy losses due to bottom ash and radiation.

R 2 Solvent reclamation/regeneration

R 3 Recycling/reclamation of organic substances which are not used as solvents (including composting and other biological transformation processes), which includes gasification and pyrolysis using the components as chemicals

R 4 Recycling/reclamation of metals and metal compounds

R 5 Recycling/reclamation of other inorganic materials, which includes soil cleaning resulting in recovery of the soil and recycling of inorganic construction materials

R 6 Regeneration of acids or bases

R 7 Recovery of components used for pollution abatement

R 8 Recovery of components from catalysts

R 9 Oil re-refining or other reuses of oil

R 10 Land treatment resulting in benefit to agriculture or ecological improvement

R 11 Use of waste obtained from any of the operations numbered R 1 to R 10

R 12 Exchange of waste for submission to any of the operations numbered R 1 to R 11 (if there is no other R code appropriate, this can include preliminary operations prior to recovery including pre-processing such as, amongst others, dismantling, sorting, crushing, compacting, pelletising, drying, shredding, conditioning, repackaging, separating, blending or mixing prior to submission to any of the operations numbered R1 to R11)

R 13 Storage of waste pending any of the operations numbered R 1 to R 12 (excluding temporary storage (being preliminary storage according to the definition of ‘collection’ in section 5(1)), pending collection, on the site where the waste is produced)”

[The page contains extremely faint and illegible text, likely bleed-through from the reverse side of the document. The text is too light to transcribe accurately.]



Environmental Protection Agency
An Ghníomhaireacht um Chaomhnú Comhshoil

Secretary
An Taisce - The National Trust for Ireland
The Tailor's Hall
Back Lane
Dublin 8

Headquarters, PO Box 3000
Johnstown Castle Estate
County Wexford, Ireland
Y35 W821

Ceanncheathrú, Bosca Poist 3000
Eastát Chaisleán Bhaile Sheáin
Contae Loch Garman, Éire
Y35 W821

T: +353 53 9160600
F: +353 53 9160699
E: info@epa.ie
W: www.epa.ie

LoCall: 1890 33 55 99

8 April, 2016

W0290 - 01

Dear Sir/Madam,

In accordance with Article 18(1) of the Waste Management (Licensing) Regulations, I am to inform you of the receipt on 31 March, 2016, of documentation relating to a waste licence application from Port of Cork Company in relation to a facility located at Bantry Inner Harbour Development Phase 1, Seafiled & Reenrour West, Bantry, Cork. This application has been assigned register number W0290 - 01. Further details in relation to the application are supplied on the accompanying attachment.

In accordance with Article 18(3) of the above Regulations, a copy of the Environmental Impact Statement (EIS) submitted with this application also accompanies.

I am to advise you that any person may make a submission to the Agency, in writing, in respect of the application, pursuant to Article 15 of the Regulations, which provides as follows:

Extract from the Waste Management (Licensing) Regulations

Submissions to the Agency regarding applications.

15. For the purpose of Section 40(2)(b) of the Acts, a person may make a written submission to the Agency in relation to -
- (i) an application, and
 - (ii) such plans, documents and other information and particulars, including an environmental impact statement, as are submitted by the applicant in accordance with Articles 12, 13, 14 and 16,
- and the Agency shall not give notice of a proposed decision under Section 42(2) of the Acts before the expiry of a period of one month following the date of a relevant -
- (a) acknowledgement in accordance with Article 14(2)(a), or
 - (b) notice in accordance with Article 16(2)(a), or
 - (c) acknowledgement in accordance with Article 16(4),
- whichever such date is the later.

The application, (EIS if relevant) and associated correspondence, including the acknowledgements and notifications referred to in Article 15, are available to view on the Agency Website at www.epa.ie/licensing.

The Agency will have regard to any submission made in accordance with the Regulations and will write, in due course, to each person who makes such a submission, to advise them of the Agency's proposed decision on the application.

In accordance with Article 22(1)(b) of the Waste Management (Licensing) Regulations, the Agency will write to you to inform you of its proposed decision on the application in due course.





An Ghníomhaireacht um Chaomhnú Comhshaoil

Waste Management Licensing

Details of Waste Licence Application, in accordance with Article 18(2) of the Waste Management (Licensing) Regulations, as of 8th April 2016.

Application Reference/ Register No.:	W0290-01
Applicant Name/ Address:	Port of Cork Company, Custom House Street, Cork.
Name & Location of Facility/ Premises concerned:	Bantry Inner Harbour Development Phase 1, Seafield & Reenrour West, Bantry, Cork.
National grid reference of facility/ Premises	E99040 N48572

Note: The class or classes of activity concerned in this application are detailed on the reverse.

re: Waste Licence Application Reg No: W0290-01, made by Port of Cork Company, Custom House Street, Cork, in respect of a facility/ premises at Seafiled & Reenrou West, Bantry, Cork. The class or classes of activity concerned in the above referenced waste licence application as of 8th April 2016, in accordance with the Third and Fourth Schedules to the Waste Management Act 1996 as amended, are as follows (see the description of these activities below):

Third Schedule Class/es: N/A

Fourth Schedule Classes: 5, 11, 13

The applicant has specified the following as the principal activity: R.5/

THIRD SCHEDULE
<i>Waste Disposal Activities</i>
<u>D 1</u> Deposit into or on to land (e.g. landfill, etc.)
<u>D 2</u> Land treatment (e.g. biodegradation of liquid or sludgy discards in soils, etc.)
<u>D 3</u> Deep injection (e.g. injection of pumpable discards into wells, salt domes or naturally occurring repositories, etc.)
<u>D 4</u> Surface impoundment (e.g. placement of liquid or sludgy discards into pits, ponds or lagoons, etc.)
<u>D 5</u> Specially engineered landfill (e.g. placement into lined discrete cells which are capped and isolated from one another and the environment, etc.)
<u>D 6</u> Release into a water body except seas/oceans
<u>D 7</u> Release to seas/oceans including sea-bed insertion
<u>D 8</u> Biological treatment not specified elsewhere in this Schedule which results in final compounds or mixtures which are discarded by means of any of the operations numbered D 1 to D 12
<u>D 9</u> Physico-chemical treatment not specified elsewhere in this Schedule which results in final compounds or mixtures which are discarded by means of any of the operations numbered D 1 to D 12 (e.g. evaporation, drying, calcination, etc.)
<u>D 10</u> Incineration on land
<u>D 11</u> Incineration at sea (this operation is prohibited by EU legislation and international conventions)
<u>D 12</u> Permanent storage (e.g. emplacement of containers in a mine, etc.)
<u>D 13</u> Blending or mixing prior to submission to any of the operations numbered D 1 to D 12 (if there is not other D code appropriate, this can include preliminary operations prior to disposal including pre-processing such as, amongst others, sorting, crushing, compacting, pelletising, drying, shredding, conditioning or separating prior to submission to any of the operations numbered D1 to D12)
<u>D 14</u> Repackaging prior to submission to any of the operations numbered D 1 to D 13
<u>D 15</u> Storage pending any of the operations numbered D 1 to D 14 (excluding temporary storage (being preliminary storage according to the definition of 'collection' in section 5(1)), pending collection, on the site where the waste is produced).

FOURTH SCHEDULE

Waste Recovery Activities

R 1 Use principally as a fuel or other means to generate energy: This includes incineration facilities dedicated to the processing of municipal solid waste only where their energy efficiency is equal to or above -

- 0.60 for installations in operation and permitted in accordance with applicable Community acts before 1 January 2009,
- 0.65 for installations permitted after 31 December 2008;

using the following formula, applied in accordance with the reference document on Best Available Techniques for Waste Incineration:

$$\text{Energy efficiency} = (E_p - (E_f + E_i)) / (0.97 \times (E_w + E_f))$$

where –

‘E_p’ means annual energy produced as heat or electricity calculated with energy in the form of electricity being multiplied by 2.6 and heat produced for commercial use multiplied by 1.1(GJ/year),

‘E_f’ means annual energy input to the system from fuels contributing to the production of steam (GJ/year),

‘E_w’ means annual energy contained in the treated waste calculated using the net calorific value of the waste (GJ/year),

‘E_i’ means annual energy imported excluding E_w and E_f(GJ/year),

‘0.97’ is a factor accounting for energy losses due to bottom ash and radiation.

R 2 Solvent reclamation/regeneration

R 3 Recycling/reclamation of organic substances which are not used as solvents (including composting and other biological transformation processes), which includes gasification and pyrolysis using the components as chemicals

R 4 Recycling/reclamation of metals and metal compounds

R 5 Recycling/reclamation of other inorganic materials, which includes soil cleaning resulting in recovery of the soil and recycling of inorganic construction materials

R 6 Regeneration of acids or bases

R 7 Recovery of components used for pollution abatement

R 8 Recovery of components from catalysts

R 9 Oil re-refining or other reuses of oil

R 10 Land treatment resulting in benefit to agriculture or ecological improvement

R 11 Use of waste obtained from any of the operations numbered R 1 to R 10

R 12 Exchange of waste for submission to any of the operations numbered R 1 to R 11 (if there is no other R code appropriate, this can include preliminary operations prior to recovery including pre-processing such as, amongst others, dismantling, sorting, crushing, compacting, pelletising, drying, shredding, conditioning, repackaging, separating, blending or mixing prior to submission to any of the operations numbered R1 to R11)

R 13 Storage of waste pending any of the operations numbered R 1 to R 12 (excluding temporary storage (being preliminary storage according to the definition of ‘collection’ in section 5(1)), pending collection, on the site where the waste is produced)”

[The page contains extremely faint and illegible text, likely bleed-through from the reverse side of the document. The text is too light to transcribe accurately.]



Environmental Protection Agency
An Ghníomhaireacht um Chaomhnú Comhshaoil

Minister Simon Coveney, TD
Department of Agriculture, Food and the Marine
Agriculture House,
Kildare
Dublin 2
environmentalco-ordination@agriculture.gov.ie

Headquarters, PO Box 3000
Johnstown Castle Estate
County Wexford, Ireland
Y35 W821

Ceanncheathrú, Bóscá Poist 3000
Eastát Chaisleán Bhaile Sheáin
Contae Loch Garman, Éire
Y35 W821

T: +353 53 9160600
F: +353 53 9160699
E: info@epa.ie
W: www.epa.ie

LoCall: 1890 33 55 99

8 April, 2016

W0290 - 01

Dear Minister Coveney, TD,

In accordance with Article 18(1) of the Waste Management (Licensing) Regulations, I am to inform you of the receipt on 31 March, 2016, of documentation relating to a waste licence application from Port of Cork Company in relation to a facility located at Bantry Inner Harbour Development Phase 1, Seafiled & Reenrour West, Bantry, Cork. This application has been assigned register number W0290 - 01. Further details in relation to the application are supplied on the accompanying attachment.

In accordance with Article 18(3) of the above Regulations, a copy of the Environmental Impact Statement (EIS) submitted with this application also accompanies.

I am to advise you that any person may make a submission to the Agency, in writing, in respect of the application, pursuant to Article 15 of the Regulations, which provides as follows:

Extract from the Waste Management (Licensing) Regulations

Submissions to the Agency regarding applications.

15. For the purpose of Section 40(2)(b) of the Acts, a person may make a written submission to the Agency in relation to -
- (i) an application, and
 - (ii) such plans, documents and other information and particulars, including an environmental impact statement, as are submitted by the applicant in accordance with Articles 12, 13, 14 and 16,
- and the Agency shall not give notice of a proposed decision under Section 42(2) of the Acts before the expiry of a period of one month following the date of a relevant -
- (a) acknowledgement in accordance with Article 14(2)(a), or
 - (b) notice in accordance with Article 16(2)(a), or
 - (c) acknowledgement in accordance with Article 16(4),
- whichever such date is the later.

The application, (EIS if relevant) and associated correspondence, including the acknowledgements and notifications referred to in Article 15, are available to view on the Agency Website at www.epa.ie/licensing.

The Agency will have regard to any submission made in accordance with the Regulations and will write, in due course, to each person who makes such a submission, to advise them of the Agency's proposed decision on the application.

In accordance with Article 22(1)(b) of the Waste Management (Licensing) Regulations, the Agency will write to you to inform you of its proposed decision on the application in due course.



If you have no comments to make in relation to this application, there is no requirement for you to reply to this letter.

Yours sincerely,

Dorota Richards

Dorota Richards
Programme Officer
Environmental Licensing Programme
Office of Environmental Sustainability



An Gníomhaireacht um Chaomhnú Comhshaoil

Waste Management Licensing

Details of Waste Licence Application, in accordance with Article 18(2) of the Waste Management (Licensing) Regulations, as of 8th April 2016.

Application Reference/ Register No.:	W0290-01
Applicant Name/ Address:	Port of Cork Company, Custom House Street, Cork.
Name & Location of Facility/ Premises concerned:	Bantry Inner Harbour Development Phase 1, Seafiled & Reenrour West, Bantry, Cork.
National grid reference of facility/ Premises	E99040 N48572

Note: The class or classes of activity concerned in this application are detailed on the reverse.

re: Waste Licence Application Reg No: W0290-01, made by Port of Cork Company, Custom House Street, Cork, in respect of a facility/ premises at Seafiled & Reenrou West, Bantry, Cork. The class or classes of activity concerned in the above referenced waste licence application as of 8th April 2016, in accordance with the Third and Fourth Schedules to the Waste Management Act 1996 as amended, are as follows (see the description of these activities below):

Third Schedule Class/es: N/A

Fourth Schedule Classes: 5, 11, 13

The applicant has specified the following as the principal activity: R.5/

THIRD SCHEDULE
<i>Waste Disposal Activities</i>
<u>D 1</u> Deposit into or on to land (e.g. landfill, etc.)
<u>D 2</u> Land treatment (e.g. biodegradation of liquid or sludgy discards in soils, etc.)
<u>D 3</u> Deep injection (e.g. injection of pumpable discards into wells, salt domes or naturally occurring repositories, etc.)
<u>D 4</u> Surface impoundment (e.g. placement of liquid or sludgy discards into pits, ponds or lagoons, etc.)
<u>D 5</u> Specially engineered landfill (e.g. placement into lined discrete cells which are capped and isolated from one another and the environment, etc.)
<u>D 6</u> Release into a water body except seas/oceans
<u>D 7</u> Release to seas/oceans including sea-bed insertion
<u>D 8</u> Biological treatment not specified elsewhere in this Schedule which results in final compounds or mixtures which are discarded by means of any of the operations numbered D 1 to D 12
<u>D 9</u> Physico-chemical treatment not specified elsewhere in this Schedule which results in final compounds or mixtures which are discarded by means of any of the operations numbered D 1 to D 12 (e.g. evaporation, drying, calcination, etc.)
<u>D 10</u> Incineration on land
<u>D 11</u> Incineration at sea (this operation is prohibited by EU legislation and international conventions)
<u>D 12</u> Permanent storage (e.g. emplacement of containers in a mine, etc.)
<u>D 13</u> Blending or mixing prior to submission to any of the operations numbered D 1 to D 12 (if there is not other D code appropriate, this can include preliminary operations prior to disposal including pre-processing such as, amongst others, sorting, crushing, compacting, pelletising, drying, shredding, conditioning or separating prior to submission to any of the operations numbered D1 to D12)
<u>D 14</u> Repackaging prior to submission to any of the operations numbered D 1 to D 13
<u>D 15</u> Storage pending any of the operations numbered D 1 to D 14 (excluding temporary storage (being preliminary storage according to the definition of 'collection' in section 5(1)), pending collection, on the site where the waste is produced).

ROURHII SCHEDULE

Waste Recovery Activities

R 1 Use principally as a fuel or other means to generate energy: This includes incineration facilities dedicated to the processing of municipal solid waste only where their energy efficiency is equal to or above -

- 0.60 for installations in operation and permitted in accordance with applicable Community acts before 1 January 2009,

- 0.65 for installations permitted after 31 December 2008,

using the following formula, applied in accordance with the reference document on Best Available Techniques for Waste Incineration:

$$\text{Energy efficiency} = (E_p - (E_f + E_i)) / (0.97 \times (E_w + E_f))$$

where –

‘E_p’ means annual energy produced as heat or electricity calculated with energy in the form of electricity being multiplied by 2.6 and heat produced for commercial use multiplied by 1.1(GJ/year),

‘E_f’ means annual energy input to the system from fuels contributing to the production of steam (GJ/year),

‘E_w’ means annual energy contained in the treated waste calculated using the net calorific value of the waste (GJ/year),

‘E_i’ means annual energy imported excluding E_w and E_f(GJ/year),

‘0.97’ is a factor accounting for energy losses due to bottom ash and radiation.

R 2 Solvent reclamation/regeneration

R 3 Recycling/reclamation of organic substances which are not used as solvents (including composting and other biological transformation processes), which includes gasification and pyrolysis using the components as chemicals

R 4 Recycling/reclamation of metals and metal compounds

R 5 Recycling/reclamation of other inorganic materials, which includes soil cleaning resulting in recovery of the soil and recycling of inorganic construction materials

R 6 Regeneration of acids or bases

R 7 Recovery of components used for pollution abatement

R 8 Recovery of components from catalysts

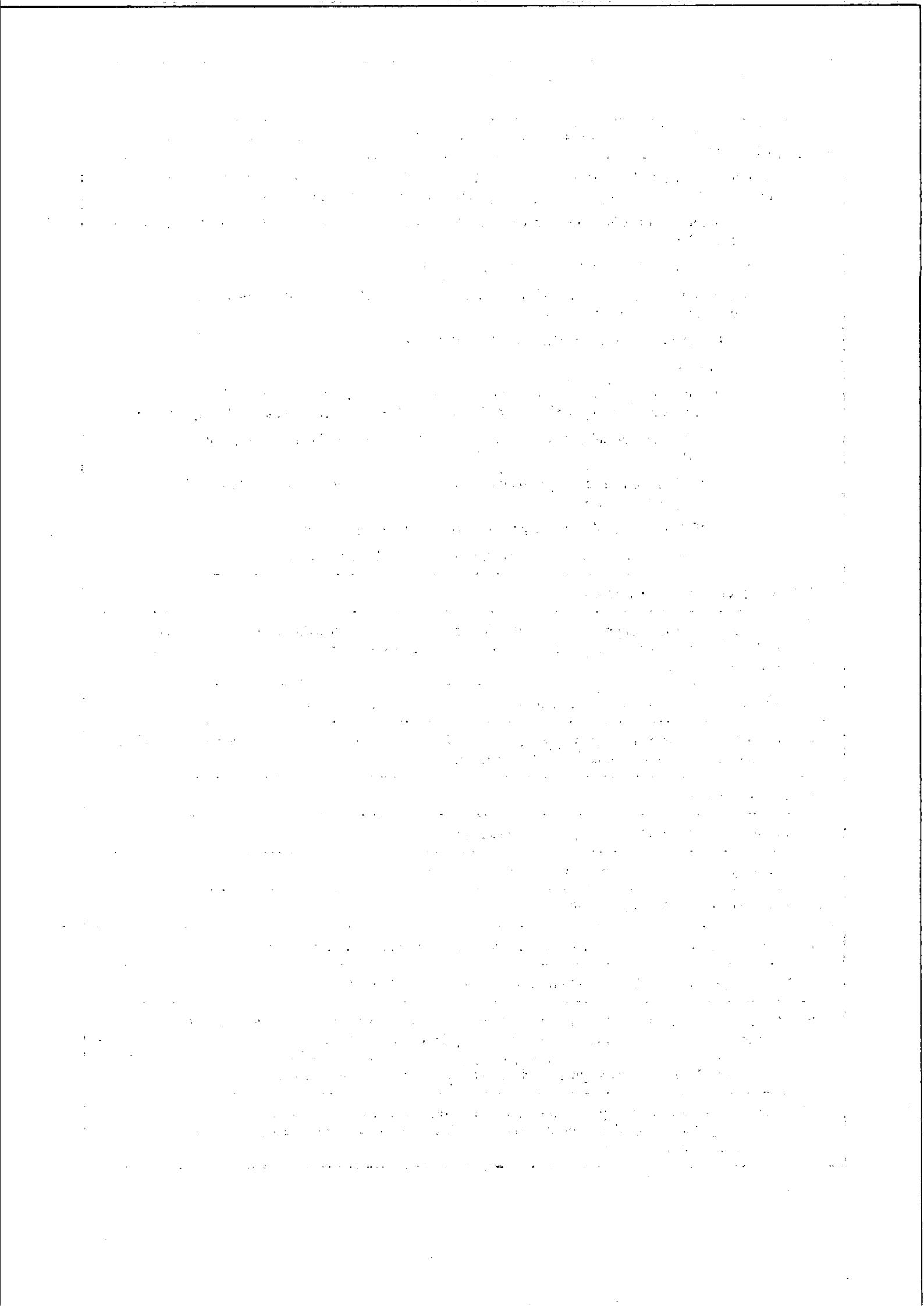
R 9 Oil re-refining or other reuses of oil

R 10 Land treatment resulting in benefit to agriculture or ecological improvement

R 11 Use of waste obtained from any of the operations numbered R 1 to R 10

R 12 Exchange of waste for submission to any of the operations numbered R 1 to R 11 (if there is no other R code appropriate, this can include preliminary operations prior to recovery including pre-processing such as, amongst others, dismantling, sorting, crushing, compacting, pelletising, drying, shredding, conditioning, repackaging, separating, blending or mixing prior to submission to any of the operations numbered R1 to R11)

R 13 Storage of waste pending any of the operations numbered R 1 to R 12 (excluding temporary storage (being preliminary storage according to the definition of ‘collection’ in section 5(1)), pending collection, on the site where the waste is produced)”



Mr. Mark Griffin
Secretary General
Dept of Communications, Energy & Natural Resources
29-31 Adelaide Road
Dublin 2
Attn: Mr.Griffin

Headquarters, PO Box 3000
Johnstown Castle Estate
County Wexford, Ireland
Y35 W821

Ceanncheathrú, Bosca Poist 3000
Eastát Chaisleán Bhaile Sheáin
Contae Loch Garman, Éire
Y35 W821

T: +353 53 9160600
F: +353 53 9160699
E: info@epa.ie
W: www.epa.ie

LoCall: 1890 33 55 99

8 April, 2016

W0290 - 01

Dear Mr. Griffin,

In accordance with Article 18(1) of the Waste Management (Licensing) Regulations, I am to inform you of the receipt on 31 March, 2016, of documentation relating to a waste licence application from Port of Cork Company in relation to a facility located at Bantry Inner Harbour Development Phase 1, Seafiled & Reenrour West, Bantry, Cork. This application has been assigned register number W0290 - 01. Further details in relation to the application are supplied on the accompanying attachment.

In accordance with Article 18(3) of the above Regulations, a copy of the Environmental Impact Statement (EIS) submitted with this application also accompanies.

I am to advise you that any person may make a submission to the Agency, in writing, in respect of the application, pursuant to Article 15 of the Regulations, which provides as follows:

Extract from the Waste Management (Licensing) Regulations

Submissions to the Agency regarding applications.

15. For the purpose of Section 40(2)(b) of the Acts, a person may make a written submission to the Agency in relation to -
- (i) an application, and
 - (ii) such plans, documents and other information and particulars, including an environmental impact statement, as are submitted by the applicant in accordance with Articles 12, 13, 14 and 16,
- and the Agency shall not give notice of a proposed decision under Section 42(2) of the Acts before the expiry of a period of one month following the date of a relevant -
- (a) acknowledgement in accordance with Article 14(2)(a), or
 - (b) notice in accordance with Article 16(2)(a), or
 - (c) acknowledgement in accordance with Article 16(4),
- whichever such date is the later.

The application, (EIS if relevant) and associated correspondence, including the acknowledgements and notifications referred to in Article 15, are available to view on the Agency Website at www.epa.ie/licensing.

The Agency will have regard to any submission made in accordance with the Regulations and will write, in due course, to each person who makes such a submission, to advise them of the Agency's proposed decision on the application.

In accordance with Article 22(1)(b) of the Waste Management (Licensing) Regulations, the Agency will write to you to inform you of its proposed decision on the application in due course.



[The text in this block is extremely faint and illegible. It appears to be a multi-paragraph document, possibly a letter or a report, but the specific content cannot be discerned.]



An Gníomhaireacht um Chaomhnú Comhshaoil

Waste Management Licensing

Details of Waste Licence Application, in accordance with Article 18(2) of the Waste Management (Licensing) Regulations, as of 8th April 2016.

Application Reference/ Register No.:	W0290-01
Applicant Name/ Address:	Port of Cork Company, Custom House Street, Cork.
Name & Location of Facility/ Premises concerned:	Bantry Inner Harbour Development Phase 1, Seafield & Reenrour West, Bantry, Cork.
National grid reference of facility/ Premises	E99040 N48572

Note: The class or classes of activity concerned in this application are detailed on the reverse.

re: Waste Licence Application Reg No: W0290-01, made by Port of Cork Company, Custom House Street, Cork, in respect of a facility/ premises at Seafield & Reenour West, Bantry, Cork. The class or classes of activity concerned in the above referenced waste licence application as of 8th April 2016, in accordance with the Third and Fourth Schedules to the Waste Management Act 1996 as amended, are as follows (see the description of these activities below):

Third Schedule Class/es: N/A

Fourth Schedule Classes: 5, 11, 13

The applicant has specified the following as the principal activity: R.5/

THIRD SCHEDULE
<i>Waste Disposal Activities</i>
<u>D 1</u> Deposit into or on to land (e.g. landfill, etc.)
<u>D 2</u> Land treatment (e.g. biodegradation of liquid or sludgy discards in soils, etc.)
<u>D 3</u> Deep injection (e.g. injection of pumpable discards into wells, salt domes or naturally occurring repositories, etc.)
<u>D 4</u> Surface impoundment (e.g. placement of liquid or sludgy discards into pits, ponds or lagoons, etc.)
<u>D 5</u> Specially engineered landfill (e.g. placement into lined discrete cells which are capped and isolated from one another and the environment, etc.)
<u>D 6</u> Release into a water body except seas/oceans
<u>D 7</u> Release to seas/oceans including sea-bed insertion
<u>D 8</u> Biological treatment not specified elsewhere in this Schedule which results in final compounds or mixtures which are discarded by means of any of the operations numbered D 1 to D 12
<u>D 9</u> Physico-chemical treatment not specified elsewhere in this Schedule which results in final compounds or mixtures which are discarded by means of any of the operations numbered D 1 to D 12 (e.g. evaporation, drying, calcination, etc.)
<u>D 10</u> Incineration on land
<u>D 11</u> Incineration at sea (this operation is prohibited by EU legislation and international conventions)
<u>D 12</u> Permanent storage (e.g. emplacement of containers in a mine, etc.)
<u>D 13</u> Blending or mixing prior to submission to any of the operations numbered D 1 to D 12 (if there is not other D code appropriate, this can include preliminary operations prior to disposal including pre-processing such as, amongst others, sorting, crushing, compacting, pelletising, drying, shredding, conditioning or separating prior to submission to any of the operations numbered D1 to D12)
<u>D 14</u> Repackaging prior to submission to any of the operations numbered D 1 to D 13
<u>D 15</u> Storage pending any of the operations numbered D 1 to D 14 (excluding temporary storage (being preliminary storage according to the definition of 'collection' in section 5(1)), pending collection, on the site where the waste is produced).

FOURTH SCHEDULE

Waste Recovery Activities

R 1 Use principally as a fuel or other means to generate energy: This includes incineration facilities dedicated to the processing of municipal solid waste only where their energy efficiency is equal to or above -

- 0.60 for installations in operation and permitted in accordance with applicable Community acts before 1 January 2009,

- 0.65 for installations permitted after 31 December 2008;

using the following formula, applied in accordance with the reference document on Best Available Techniques for Waste Incineration:

$$\text{Energy efficiency} = (E_p - (E_f + E_i)) / (0.97 \times (E_w + E_f))$$

where –

‘E_p’ means annual energy produced as heat or electricity calculated with energy in the form of electricity being multiplied by 2.6 and heat produced for commercial use multiplied by 1.1(GJ/year),

‘E_f’ means annual energy input to the system from fuels contributing to the production of steam (GJ/year),

‘E_w’ means annual energy contained in the treated waste calculated using the net calorific value of the waste (GJ/year),

‘E_i’ means annual energy imported excluding E_w and E_f(GJ/year),

‘0.97’ is a factor accounting for energy losses due to bottom ash and radiation.

R 2 Solvent reclamation/regeneration

R 3 Recycling/reclamation of organic substances which are not used as solvents (including composting and other biological transformation processes), which includes gasification and pyrolysis using the components as chemicals

R 4 Recycling/reclamation of metals and metal compounds

R 5 Recycling/reclamation of other inorganic materials, which includes soil cleaning resulting in recovery of the soil and recycling of inorganic construction materials

R 6 Regeneration of acids or bases

R 7 Recovery of components used for pollution abatement

R 8 Recovery of components from catalysts

R 9 Oil re-refining or other reuses of oil

R 10 Land treatment resulting in benefit to agriculture or ecological improvement

R 11 Use of waste obtained from any of the operations numbered R 1 to R 10

R 12 Exchange of waste for submission to any of the operations numbered R 1 to R 11 (if there is no other R code appropriate, this can include preliminary operations prior to recovery including pre-processing such as, amongst others, dismantling, sorting, crushing, compacting, pelletising, drying, shredding, conditioning, repackaging, separating, blending or mixing prior to submission to any of the operations numbered R1 to R11)

R 13 Storage of waste pending any of the operations numbered R 1 to R 12 (excluding temporary storage (being preliminary storage according to the definition of ‘collection’ in section 5(1)), pending collection, on the site where the waste is produced)”

Dept of Environment, Community & Local Government
Newtown Road
Wexford
Sorcha.Byrne@environ.ie

Headquarters, PO Box 3000
Johnstown Castle Estate
County Wexford, Ireland
Y35 W821

Ceánrcheathrú, Bosca Poist 3000
Eastát Chaisleán Bhaile Sheáin
Contae Loch Garman, Éire
Y35 W821

T: +353 53 9160600
F: +353 53 9160699
E: info@epa.ie
W: www.epa.ie

LoCall: 1890 33 55 99

8 April, 2016

W0290 - 01

Dear Sir/Madam,

In accordance with Article 18(1) of the Waste Management (Licensing) Regulations, I am to inform you of the receipt on 31 March, 2016, of documentation relating to a waste licence application from Port of Cork Company in relation to a facility located at Bantry Inner Harbour Development Phase 1, Seafiled & Reenrour West, Bantry, Cork. This application has been assigned register number W0290 - 01. Further details in relation to the application are supplied on the accompanying attachment.

In accordance with Article 18(3) of the above Regulations, a copy of the Environmental Impact Statement (EIS) submitted with this application also accompanies.

I am to advise you that any person may make a submission to the Agency, in writing, in respect of the application, pursuant to Article 15 of the Regulations, which provides as follows:

Extract from the Waste Management (Licensing) Regulations

Submissions to the Agency regarding applications.

15. For the purpose of Section 40(2)(b) of the Acts, a person may make a written submission to the Agency in relation to -
- (i) an application, and
 - (ii) such plans, documents and other information and particulars, including an environmental impact statement, as are submitted by the applicant in accordance with Articles 12, 13, 14 and 16,
- and the Agency shall not give notice of a proposed decision under Section 42(2) of the Acts before the expiry of a period of one month following the date of a relevant -
- (a) acknowledgement in accordance with Article 14(2)(a), or
 - (b) notice in accordance with Article 16(2)(a), or
 - (c) acknowledgement in accordance with Article 16(4),
- whichever such date is the later.

The application, (EIS if relevant) and associated correspondence, including the acknowledgements and notifications referred to in Article 15, are available to view on the Agency Website at www.epa.ie/licensing.

The Agency will have regard to any submission made in accordance with the Regulations and will write, in due course, to each person who makes such a submission, to advise them of the Agency's proposed decision on the application.

In accordance with Article 22(1)(b) of the Waste Management (Licensing) Regulations, the Agency will write to you to inform you of its proposed decision on the application in due course.

If you have no comments to make in relation to this application, there is no requirement for you to reply to this letter.

Yours sincerely,

Dorota Richards

Dorota Richards
Programme Officer
Environmental Licensing Programme
Office of Environmental Sustainability



An Gníomhaireacht um Chaomhnú Comhshaoil

Waste Management Licensing

Details of Waste Licence Application, in accordance with Article 18(2) of the Waste Management (Licensing) Regulations, as of 8th April 2016.

Application Reference/ Register No.:	W0290-01
Applicant Name/ Address:	Port of Cork Company, Custom House Street, Cork.
Name & Location of Facility/ Premises concerned:	Bantry Inner Harbour Development Phase 1, Seafield & Reenrou West, Bantry, Cork.
National grid reference of facility/ Premises	E99040 N48572

Note: The class or classes of activity concerned in this application are detailed on the reverse.

re: Waste Licence Application Reg No: W0290-01, made by Port of Cork Company, Custom House Street, Cork, in respect of a facility/ premises at Seafield & Reenrou West, Bantry, Cork. The class or classes of activity concerned in the above referenced waste licence application as of 8th April 2016, in accordance with the Third and Fourth Schedules to the Waste Management Act 1996 as amended, are as follows (see the description of these activities below):

Third Schedule Class/es: N/A

Fourth Schedule Classes: 5, 11, 13

The applicant has specified the following as the principal activity: R.5/

THIRD SCHEDULE
<i>Waste Disposal Activities</i>
<u>D 1</u> Deposit into or on to land (e.g. landfill, etc.)
<u>D 2</u> Land treatment (e.g. biodegradation of liquid or sludgy discards in soils, etc.)
<u>D 3</u> Deep injection (e.g. injection of pumpable discards into wells, salt domes or naturally occurring repositories, etc.)
<u>D 4</u> Surface impoundment (e.g. placement of liquid or sludgy discards into pits, ponds or lagoons, etc.)
<u>D 5</u> Specially engineered landfill (e.g. placement into lined discrete cells which are capped and isolated from one another and the environment, etc.)
<u>D 6</u> Release into a water body except seas/oceans
<u>D 7</u> Release to seas/oceans including sea-bed insertion
<u>D 8</u> Biological treatment not specified elsewhere in this Schedule which results in final compounds or mixtures which are discarded by means of any of the operations numbered D 1 to D 12
<u>D 9</u> Physico-chemical treatment not specified elsewhere in this Schedule which results in final compounds or mixtures which are discarded by means of any of the operations numbered D 1 to D 12 (e.g. evaporation, drying, calcination, etc.)
<u>D 10</u> Incineration on land
<u>D 11</u> Incineration at sea (this operation is prohibited by EU legislation and international conventions)
<u>D 12</u> Permanent storage (e.g. emplacement of containers in a mine, etc.)
<u>D 13</u> Blending or mixing prior to submission to any of the operations numbered D 1 to D 12 (if there is not other D code appropriate, this can include preliminary operations prior to disposal including pre-processing such as, amongst others, sorting, crushing, compacting, pelletising, drying, shredding, conditioning or separating prior to submission to any of the operations numbered D1 to D12)
<u>D 14</u> Repackaging prior to submission to any of the operations numbered D 1 to D 13
<u>D 15</u> Storage pending any of the operations numbered D 1 to D 14 (excluding temporary storage (being preliminary storage according to the definition of 'collection' in section 5(1)), pending collection, on the site where the waste is produced).

FOURTH SCHEDULE

Waste Recovery Activities

R 1 Use principally as a fuel or other means to generate energy: This includes incineration facilities dedicated to the processing of municipal solid waste only where their energy efficiency is equal to or above -

- 0.60 for installations in operation and permitted in accordance with applicable Community acts before 1 January 2009,

- 0.65 for installations permitted after 31 December 2008,

using the following formula, applied in accordance with the reference document on Best Available Techniques for Waste Incineration:

$$\text{Energy efficiency} = (E_p - (E_f + E_i)) / (0.97 \times (E_w + E_f))$$

where –

‘E_p’ means annual energy produced as heat or electricity calculated with energy in the form of electricity being multiplied by 2.6 and heat produced for commercial use multiplied by 1.1(GJ/year),

‘E_f’ means annual energy input to the system from fuels contributing to the production of steam (GJ/year),

‘E_w’ means annual energy contained in the treated waste calculated using the net calorific value of the waste (GJ/year),

‘E_i’ means annual energy imported excluding E_w and E_f(GJ/year),

‘0.97’ is a factor accounting for energy losses due to bottom ash and radiation.

R 2 Solvent reclamation/regeneration

R 3 Recycling/reclamation of organic substances which are not used as solvents (including composting and other biological transformation processes), which includes gasification and pyrolysis using the components as chemicals

R 4 Recycling/reclamation of metals and metal compounds

R 5 Recycling/reclamation of other inorganic materials, which includes soil cleaning resulting in recovery of the soil and recycling of inorganic construction materials

R 6 Regeneration of acids or bases

R 7 Recovery of components used for pollution abatement

R 8 Recovery of components from catalysts

R 9 Oil re-refining or other reuses of oil

R 10 Land treatment resulting in benefit to agriculture or ecological improvement

R 11 Use of waste obtained from any of the operations numbered R 1 to R 10

R 12 Exchange of waste for submission to any of the operations numbered R 1 to R 11 (if there is no other R code appropriate, this can include preliminary operations prior to recovery including pre-processing such as, amongst others, dismantling, sorting, crushing, compacting, pelletising, drying, shredding, conditioning, repackaging, separating, blending or mixing prior to submission to any of the operations numbered R1 to R11)

R 13 Storage of waste pending any of the operations numbered R 1 to R 12 (excluding temporary storage (being preliminary storage according to the definition of ‘collection’ in section 5(1)), pending collection, on the site where the waste is produced)”

[The page contains extremely faint and illegible text, likely bleed-through from the reverse side of the document. The text is too light to transcribe accurately.]



Environmental Protection Agency
An Ghníomhaireacht um Chaomhnú Comhshaoil

Development Applications Unit
Department of Arts, Heritage and the Gaeltacht
fem.dau@ahg.gov.ie

Headquarters, PO Box 3000
Johnstown Castle Estate
County Wexford, Ireland
Y35 W821

Ceanncheathrú, Bosca Poist 3000
Eastát Chaisleán Bhaile Sheáin
Contae Loch Garman, Éire
Y35 W821

T: +353 53 9160600
F: +353 53 9160699
E: info@epa.ie
W: www.epa.ie

LoCall: 1890 33 55 99

8 April, 2016

W0290 - 01

Dear Sir/Madam,

In accordance with Article 18(1) of the Waste Management (Licensing) Regulations, I am to inform you of the receipt on 31 March, 2016, of documentation relating to a waste licence application from Port of Cork Company in relation to a facility located at Bantry Inner Harbour Development Phase 1, Seafield & Reenrour West, Bantry, Cork. This application has been assigned register number W0290 - 01. Further details in relation to the application are supplied on the accompanying attachment.

In accordance with Article 18(3) of the above Regulations, a copy of the Environmental Impact Statement (EIS) submitted with this application also accompanies.

I am to advise you that any person may make a submission to the Agency, in writing, in respect of the application, pursuant to Article 15 of the Regulations, which provides as follows:

Extract from the Waste Management (Licensing) Regulations

Submissions to the Agency regarding applications.

15. For the purpose of Section 40(2)(b) of the Acts, a person may make a written submission to the Agency in relation to -
- (i) an application, and
 - (ii) such plans, documents and other information and particulars, including an environmental impact statement, as are submitted by the applicant in accordance with Articles 12, 13, 14 and 16,
- and the Agency shall not give notice of a proposed decision under Section 42(2) of the Acts before the expiry of a period of one month following the date of a relevant -
- (a) acknowledgement in accordance with Article 14(2)(a), or
 - (b) notice in accordance with Article 16(2)(a), or
 - (c) acknowledgement in accordance with Article 16(4),
- whichever such date is the later.

The application, (EIS if relevant) and associated correspondence, including the acknowledgements and notifications referred to in Article 15, are available to view on the Agency Website at www.epa.ie/licensing.

The Agency will have regard to any submission made in accordance with the Regulations and will write, in due course, to each person who makes such a submission, to advise them of the Agency's proposed decision on the application.

In accordance with Article 22(1)(b) of the Waste Management (Licensing) Regulations, the Agency will write to you to inform you of its proposed decision on the application in due course.



If you have no comments to make in relation to this application, there is no requirement for you to reply to this letter.

Yours sincerely,

Dorota Richards

Dorota Richards
Programme Officer
Environmental Licensing Programme
Office of Environmental Sustainability



An Gníomhaireacht um Chaomhnú Comhshaoil

Waste Management Licensing

Details of Waste Licence Application, in accordance with Article 18(2) of the Waste Management (Licensing) Regulations, as of 8th April 2016.

Application Reference/ Register No.:	W0290-01
Applicant Name/ Address:	Port of Cork Company, Custom House Street, Cork.
Name & Location of Facility/ Premises concerned:	Bantry Inner Harbour Development Phase 1, Seafield & Reenrou West, Bantry, Cork.
National grid reference of facility/ Premises	E99040 N48572

Note: The class or classes of activity concerned in this application are detailed on the reverse.

re: Waste Licence Application Reg No: W0290-01, made by Port of Cork Company, Custom House Street, Cork, in respect of a facility/ premises at Seafield & Reenrou West, Bantry, Cork. The class or classes of activity concerned in the above referenced waste licence application as of 8th April 2016, in accordance with the Third and Fourth Schedules to the Waste Management Act 1996 as amended, are as follows (see the description of these activities below):

Third Schedule Class/es: N/A

Fourth Schedule Classes: 5, 11, 13

The applicant has specified the following as the principal activity: R.5/

THIRD SCHEDULE
Waste Disposal Activities
<u>D 1</u> Deposit into or on to land (e.g. landfill, etc.)
<u>D 2</u> Land treatment (e.g. biodegradation of liquid or sludgy discards in soils, etc.)
<u>D 3</u> Deep injection (e.g. injection of pumpable discards into wells, salt domes or naturally occurring repositories, etc.)
<u>D 4</u> Surface impoundment (e.g. placement of liquid or sludgy discards into pits, ponds or lagoons, etc.)
<u>D 5</u> Specially engineered landfill (e.g. placement into lined discrete cells which are capped and isolated from one another and the environment, etc.)
<u>D 6</u> Release into a water body except seas/oceans
<u>D 7</u> Release to seas/oceans including sea-bed insertion
<u>D 8</u> Biological treatment not specified elsewhere in this Schedule which results in final compounds or mixtures which are discarded by means of any of the operations numbered D 1 to D 12
<u>D 9</u> Physico-chemical treatment not specified elsewhere in this Schedule which results in final compounds or mixtures which are discarded by means of any of the operations numbered D 1 to D 12 (e.g. evaporation, drying, calcination, etc.)
<u>D 10</u> Incineration on land
<u>D 11</u> Incineration at sea (this operation is prohibited by EU legislation and international conventions)
<u>D 12</u> Permanent storage (e.g. emplacement of containers in a mine, etc.)
<u>D 13</u> Blending or mixing prior to submission to any of the operations numbered D 1 to D 12 (if there is not other D code appropriate, this can include preliminary operations prior to disposal including pre-processing such as, amongst others, sorting, crushing, compacting, pelletising, drying, shredding, conditioning or separating prior to submission to any of the operations numbered D1 to D12)
<u>D 14</u> Repackaging prior to submission to any of the operations numbered D 1 to D 13
<u>D 15</u> Storage pending any of the operations numbered D 1 to D 14 (excluding temporary storage (being preliminary storage according to the definition of 'collection' in section 5(1)), pending collection, on the site where the waste is produced).

Waste Recovery Activities

R 1 Use principally as a fuel or other means to generate energy: This includes incineration facilities dedicated to the processing of municipal solid waste only where their energy efficiency is equal to or above -

- 0.60 for installations in operation and permitted in accordance with applicable Community acts before 1 January 2009,

- 0.65 for installations permitted after 31 December 2008,

using the following formula, applied in accordance with the reference document on Best Available Techniques for Waste Incineration:

$$\text{Energy efficiency} = (E_p - (E_f + E_i)) / (0.97 \times (E_w + E_f))$$

where –

‘E_p’ means annual energy produced as heat or electricity calculated with energy in the form of electricity being multiplied by 2.6 and heat produced for commercial use multiplied by 1.1(GJ/year),

‘E_f’ means annual energy input to the system from fuels contributing to the production of steam (GJ/year),

‘E_w’ means annual energy contained in the treated waste calculated using the net calorific value of the waste (GJ/year),

‘E_i’ means annual energy imported excluding E_w and E_f(GJ/year),

‘0.97’ is a factor accounting for energy losses due to bottom ash and radiation.

R 2 Solvent reclamation/regeneration

R 3 Recycling/reclamation of organic substances which are not used as solvents (including composting and other biological transformation processes), which includes gasification and pyrolysis using the components as chemicals

R 4 Recycling/reclamation of metals and metal compounds

R 5 Recycling/reclamation of other inorganic materials, which includes soil cleaning resulting in recovery of the soil and recycling of inorganic construction materials

R 6 Regeneration of acids or bases

R 7 Recovery of components used for pollution abatement

R 8 Recovery of components from catalysts

R 9 Oil re-refining or other reuses of oil

R 10 Land treatment resulting in benefit to agriculture or ecological improvement

R 11 Use of waste obtained from any of the operations numbered R 1 to R 10

R 12 Exchange of waste for submission to any of the operations numbered R 1 to R 11 (if there is no other R code appropriate, this can include preliminary operations prior to recovery including pre-processing such as, amongst others, dismantling, sorting, crushing, compacting, pelletising, drying, shredding, conditioning, repackaging, separating, blending or mixing prior to submission to any of the operations numbered R1 to R11)

R 13 Storage of waste pending any of the operations numbered R 1 to R 12 (excluding temporary storage (being preliminary storage according to the definition of ‘collection’ in section 5(1)), pending collection, on the site where the waste is produced)”

Mr. Paddy Mathews
Manager of Environment & Planning
Failte Ireland
Environment Unit
88-95 Amiens Street
Dublin 1
Attn: Mr. Paddy Matthews

Headquarters, PO Box 3000
Johnstown Castle Estate
County Wexford, Ireland
Y35 W821

Ceanncheathrú, Bosca Poist 3000
Eastát Chaisleán Bhaile Sheáin
Contae Loch Garman, Éire
Y35 W821

T: +353 53 9160600
F: +353 53 9160699
E: info@epa.ie
W: www.epa.ie

LoCall: 1890 33 55 99

8 April, 2016

W0290 - 01

Dear Mr. Mathews,

In accordance with Article 18(1) of the Waste Management (Licensing) Regulations, I am to inform you of the receipt on 31 March, 2016, of documentation relating to a waste licence application from Port of Cork Company in relation to a facility located at Bantry Inner Harbour Development Phase 1, Seafiled & Reenrour West, Bantry, Cork. This application has been assigned register number W0290 - 01. Further details in relation to the application are supplied on the accompanying attachment.

In accordance with Article 18(3) of the above Regulations, a copy of the Environmental Impact Statement (EIS) submitted with this application also accompanies.

I am to advise you that any person may make a submission to the Agency, in writing, in respect of the application, pursuant to Article 15 of the Regulations, which provides as follows:

Extract from the Waste Management (Licensing) Regulations

Submissions to the Agency regarding applications.

15. For the purpose of Section 40(2)(b) of the Acts, a person may make a written submission to the Agency in relation to -
- (i) an application, and
 - (ii) such plans, documents and other information and particulars, including an environmental impact statement, as are submitted by the applicant in accordance with Articles 12, 13, 14 and 16,
- and the Agency shall not give notice of a proposed decision under Section 42(2) of the Acts before the expiry of a period of one month following the date of a relevant -
- (a) acknowledgement in accordance with Article 14(2)(a), or
 - (b) notice in accordance with Article 16(2)(a), or
 - (c) acknowledgement in accordance with Article 16(4),
- whichever such date is the later.

The application, (EIS if relevant) and associated correspondence, including the acknowledgements and notifications referred to in Article 15, are available to view on the Agency Website at www.epa.ie/licensing.

The Agency will have regard to any submission made in accordance with the Regulations and will write, in due course, to each person who makes such a submission, to advise them of the Agency's proposed decision on the application.

In accordance with Article 22(1)(b) of the Waste Management (Licensing) Regulations, the Agency will write to you to inform you of its proposed decision on the application in due course.

If you have no comments to make in relation to this application, there is no requirement for you to reply to this letter.

Yours sincerely,

Dorota Richards

Dorota Richards
Programme Officer
Environmental Licensing Programme
Office of Environmental Sustainability



An Gníomhaireacht um Chaomhnú Comhshaoil

Waste Management Licensing

Details of Waste Licence Application, in accordance with Article 18(2) of the Waste Management (Licensing) Regulations, as of 8th April 2016.

Application Reference/ Register No.:	W0290-01
Applicant Name/ Address:	Port of Cork Company, Custom House Street, Cork.
Name & Location of Facility/ Premises concerned:	Bantry Inner Harbour Development Phase 1, Seafield & Reenrour West, Bantry, Cork.
National grid reference of facility/ Premises	E99040 N48572

Note: The class or classes of activity concerned in this application are detailed on the reverse.

re: Waste Licence Application Reg No: W0290-01, made by Port of Cork Company, Custom House Street, Cork, in respect of a facility/ premises at Seafield & Reenrou West, Bantry, Cork. The class or classes of activity concerned in the above referenced waste licence application as of 8th April 2016, in accordance with the Third and Fourth Schedules to the Waste Management Act 1996 as amended, are as follows (see the description of these activities below):

Third Schedule Class/es: N/A

Fourth Schedule Classes: 5, 11, 13

The applicant has specified the following as the principal activity: R.5/

THIRD SCHEDULE
<i>Waste Disposal Activities</i>
<u>D 1</u> Deposit into or on to land (e.g. landfill, etc.)
<u>D 2</u> Land treatment (e.g. biodegradation of liquid or sludgy discards in soils, etc.)
<u>D 3</u> Deep injection (e.g. injection of pumpable discards into wells, salt domes or naturally occurring repositories, etc.)
<u>D 4</u> Surface impoundment (e.g. placement of liquid or sludgy discards into pits, ponds or lagoons, etc.)
<u>D 5</u> Specially engineered landfill (e.g. placement into lined discrete cells which are capped and isolated from one another and the environment, etc.)
<u>D 6</u> Release into a water body except seas/oceans
<u>D 7</u> Release to seas/oceans including sea-bed insertion
<u>D 8</u> Biological treatment not specified elsewhere in this Schedule which results in final compounds or mixtures which are discarded by means of any of the operations numbered D 1 to D 12
<u>D 9</u> Physico-chemical treatment not specified elsewhere in this Schedule which results in final compounds or mixtures which are discarded by means of any of the operations numbered D 1 to D 12 (e.g. evaporation, drying, calcination, etc.)
<u>D 10</u> Incineration on land
<u>D 11</u> Incineration at sea (this operation is prohibited by EU legislation and international conventions)
<u>D 12</u> Permanent storage (e.g. emplacement of containers in a mine, etc.)
<u>D 13</u> Blending or mixing prior to submission to any of the operations numbered D 1 to D 12 (if there is not other D code appropriate, this can include preliminary operations prior to disposal including pre-processing such as, amongst others, sorting, crushing, compacting, pelletising, drying, shredding, conditioning or separating prior to submission to any of the operations numbered D1 to D12)
<u>D 14</u> Repackaging prior to submission to any of the operations numbered D 1 to D 13
<u>D 15</u> Storage pending any of the operations numbered D 1 to D 14 (excluding temporary storage (being preliminary storage according to the definition of 'collection' in section 5(1)), pending collection, on the site where the waste is produced).

Waste Recovery Activities

R 1 Use principally as a fuel or other means to generate energy: This includes incineration facilities dedicated to the processing of municipal solid waste only where their energy efficiency is equal to or above -

- 0.60 for installations in operation and permitted in accordance with applicable Community acts before 1 January 2009,

- 0.65 for installations permitted after 31 December 2008,

using the following formula, applied in accordance with the reference document on Best Available Techniques for Waste Incineration:

$$\text{Energy efficiency} = (E_p - (E_f + E_i)) / (0.97 \times (E_w + E_f))$$

where -

'E_p' means annual energy produced as heat or electricity calculated with energy in the form of electricity being multiplied by 2.6 and heat produced for commercial use multiplied by 1.1(GJ/year),

'E_f' means annual energy input to the system from fuels contributing to the production of steam (GJ/year),

'E_w' means annual energy contained in the treated waste calculated using the net calorific value of the waste (GJ/year),

'E_i' means annual energy imported excluding E_w and E_f(GJ/year),

'0.97' is a factor accounting for energy losses due to bottom ash and radiation.

R 2 Solvent reclamation/regeneration

R 3 Recycling/reclamation of organic substances which are not used as solvents (including composting and other biological transformation processes), which includes gasification and pyrolysis using the components as chemicals

R 4 Recycling/reclamation of metals and metal compounds

R 5 Recycling/reclamation of other inorganic materials, which includes soil cleaning resulting in recovery of the soil and recycling of inorganic construction materials

R 6 Regeneration of acids or bases

R 7 Recovery of components used for pollution abatement

R 8 Recovery of components from catalysts

R 9 Oil re-refining or other reuses of oil

R 10 Land treatment resulting in benefit to agriculture or ecological improvement

R 11 Use of waste obtained from any of the operations numbered R 1 to R 10

R 12 Exchange of waste for submission to any of the operations numbered R 1 to R 11 (if there is no other R code appropriate, this can include preliminary operations prior to recovery including pre-processing such as, amongst others, dismantling, sorting, crushing, compacting, pelletising, drying, shredding, conditioning, repackaging, separating, blending or mixing prior to submission to any of the operations numbered R1 to R11)

R 13 Storage of waste pending any of the operations numbered R 1 to R 12 (excluding temporary storage (being preliminary storage according to the definition of 'collection' in section 5(1)), pending collection, on the site where the waste is produced)"

Faint, illegible text covering the majority of the page, possibly bleed-through from the reverse side or a very low-quality scan.

Health & Safety Authority
chemicals@hsa.ie
For the attention of Alice Doherty/Tara Horigan

Headquarters, PO Box 3000
Johnstown Castle Estate
County Wexford, Ireland
Y35 W821

Ceanncheathrú, Bosca Poist 3000
Eastát Chaisleán Bhaile Sheáin
Contae Loch Garman, Éire
Y35 W821

T: +353 53 9160600
F: +353 53 9160699
E: info@epa.ie
W: www.epa.ie

LoCall: 1890 33 55 99

8 April, 2016

W0290 - 01

Dear Sir/Madam,

In accordance with Article 18(1) of the Waste Management (Licensing) Regulations, I am to inform you of the receipt on 31 March, 2016, of documentation relating to a waste licence application from Port of Cork Company in relation to a facility located at Bantry Inner Harbour Development Phase 1, Seafiled & Reenrour West, Bantry, Cork. This application has been assigned register number W0290 - 01. Further details in relation to the application are supplied on the accompanying attachment.

In accordance with Article 18(3) of the above Regulations, a copy of the Environmental Impact Statement (EIS) submitted with this application also accompanies.

I am to advise you that any person may make a submission to the Agency, in writing, in respect of the application, pursuant to Article 15 of the Regulations, which provides as follows:

Extract from the Waste Management (Licensing) Regulations

Submissions to the Agency regarding applications.

15. For the purpose of Section 40(2)(b) of the Acts, a person may make a written submission to the Agency in relation to -
- (i) an application, and
 - (ii) such plans, documents and other information and particulars, including an environmental impact statement, as are submitted by the applicant in accordance with Articles 12, 13, 14 and 16,
- and the Agency shall not give notice of a proposed decision under Section 42(2) of the Acts before the expiry of a period of one month following the date of a relevant -
- (a) acknowledgement in accordance with Article 14(2)(a), or
 - (b) notice in accordance with Article 16(2)(a), or
 - (c) acknowledgement in accordance with Article 16(4),
- whichever such date is the later.

The application, (EIS if relevant) and associated correspondence, including the acknowledgements and notifications referred to in Article 15, are available to view on the Agency Website at www.epa.ie/licensing.

The Agency will have regard to any submission made in accordance with the Regulations and will write, in due course, to each person who makes such a submission, to advise them of the Agency's proposed decision on the application.

In accordance with Article 22(1)(b) of the Waste Management (Licensing) Regulations, the Agency will write to you to inform you of its proposed decision on the application in due course.

If you have no comments to make in relation to this application, there is no requirement for you to reply to this letter.

Yours sincerely,

Dorota Richards

Dorota Richards
Programme Officer
Environmental Licensing Programme
Office of Environmental Sustainability



An Ghníomhaireacht um Chaomhnú Comhshaoil

Waste Management Licensing

Details of Waste Licence Application, in accordance with Article 18(2) of the Waste Management (Licensing) Regulations, as of 8th April 2016.

Application Reference/ Register No.:	W0290-01
Applicant Name/ Address:	Port of Cork Company, Custom House Street, Cork.
Name & Location of Facility/ Premises concerned:	Bantry Inner Harbour Development Phase 1, Seafield & Reenrour West, Bantry, Cork.
National grid reference of facility/ Premises	E99040 N48572

Note: The class or classes of activity concerned in this application are detailed on the reverse.

re: Waste Licence Application Reg No: W0290-01, made by Port of Cork Company, Custom House Street, Cork, in respect of a facility/ premises at Seafiled & Reenrou West, Bantry, Cork. The class or classes of activity concerned in the above referenced waste licence application as of 8th April 2016, in accordance with the Third and Fourth Schedules to the Waste Management Act 1996 as amended, are as follows (see the description of these activities below):

Third Schedule Class/es: N/A

Fourth Schedule Classes: 5, 11, 13

The applicant has specified the following as the principal activity: R.5/

THIRD SCHEDULE
<i>Waste Disposal Activities</i>
<u>D 1</u> Deposit into or on to land (e.g. landfill, etc.)
<u>D 2</u> Land treatment (e.g. biodegradation of liquid or sludgy discards in soils, etc.)
<u>D 3</u> Deep injection (e.g. injection of pumpable discards into wells, salt domes or naturally occurring repositories, etc.)
<u>D 4</u> Surface impoundment (e.g. placement of liquid or sludgy discards into pits, ponds or lagoons, etc.)
<u>D 5</u> Specially engineered landfill (e.g. placement into lined discrete cells which are capped and isolated from one another and the environment, etc.)
<u>D 6</u> Release into a water body except seas/oceans
<u>D 7</u> Release to seas/oceans including sea-bed insertion
<u>D 8</u> Biological treatment not specified elsewhere in this Schedule which results in final compounds or mixtures which are discarded by means of any of the operations numbered D 1 to D 12
<u>D 9</u> Physico-chemical treatment not specified elsewhere in this Schedule which results in final compounds or mixtures which are discarded by means of any of the operations numbered D 1 to D 12 (e.g. evaporation, drying, calcination, etc.)
<u>D 10</u> Incineration on land
<u>D 11</u> Incineration at sea (this operation is prohibited by EU legislation and international conventions)
<u>D 12</u> Permanent storage (e.g. emplacement of containers in a mine, etc.)
<u>D 13</u> Blending or mixing prior to submission to any of the operations numbered D 1 to D 12 (if there is not other D code appropriate, this can include preliminary operations prior to disposal including pre-processing such as, amongst others, sorting, crushing, compacting, pelletising, drying, shredding, conditioning or separating prior to submission to any of the operations numbered D1 to D12)
<u>D 14</u> Repackaging prior to submission to any of the operations numbered D 1 to D 13
<u>D 15</u> Storage pending any of the operations numbered D 1 to D 14 (excluding temporary storage (being preliminary storage according to the definition of 'collection' in section 5(1)), pending collection, on the site where the waste is produced).

FOURTH SCHEDULE

Waste Recovery Activities

R 1 Use principally as a fuel or other means to generate energy: This includes incineration facilities dedicated to the processing of municipal solid waste only where their energy efficiency is equal to or above -

- 0.60 for installations in operation and permitted in accordance with applicable Community acts before 1 January 2009,

- 0.65 for installations permitted after 31 December 2008,

using the following formula, applied in accordance with the reference document on Best Available Techniques for Waste Incineration:

$$\text{Energy efficiency} = (E_p - (E_f + E_i)) / (0.97 \times (E_w + E_f))$$

where -

‘E_p’ means annual energy produced as heat or electricity calculated with energy in the form of electricity being multiplied by 2.6 and heat produced for commercial use multiplied by 1.1 (GJ/year),

‘E_f’ means annual energy input to the system from fuels contributing to the production of steam (GJ/year),

‘E_w’ means annual energy contained in the treated waste calculated using the net calorific value of the waste (GJ/year),

‘E_i’ means annual energy imported excluding E_w and E_f (GJ/year),

‘0.97’ is a factor accounting for energy losses due to bottom ash and radiation.

R 2 Solvent reclamation/regeneration

R 3 Recycling/reclamation of organic substances which are not used as solvents (including composting and other biological transformation processes), which includes gasification and pyrolysis using the components as chemicals

R 4 Recycling/reclamation of metals and metal compounds

R 5 Recycling/reclamation of other inorganic materials, which includes soil cleaning resulting in recovery of the soil and recycling of inorganic construction materials

R 6 Regeneration of acids or bases

R 7 Recovery of components used for pollution abatement

R 8 Recovery of components from catalysts

R 9 Oil re-refining or other reuses of oil

R 10 Land treatment resulting in benefit to agriculture or ecological improvement

R 11 Use of waste obtained from any of the operations numbered R 1 to R 10

R 12 Exchange of waste for submission to any of the operations numbered R 1 to R 11 (if there is no other R code appropriate, this can include preliminary operations prior to recovery including pre-processing such as, amongst others, dismantling, sorting, crushing, compacting, pelletising, drying, shredding, conditioning, repackaging, separating, blending or mixing prior to submission to any of the operations numbered R 1 to R 11)

R 13 Storage of waste pending any of the operations numbered R 1 to R 12 (excluding temporary storage (being preliminary storage according to the definition of ‘collection’ in section 5(1)), pending collection, on the site where the waste is produced)”

[The page contains extremely faint and illegible text, likely bleed-through from the reverse side of the document. The text is too light to transcribe accurately.]



Environmental Protection Agency
An Ghníomhaireacht um Chaomhnú Comhshaoil

Dr. Greg Forde
River Basin District Director
Inland Fisheries Ireland
3044 Lake Drive
City West Business Campus
Dublin 24
Attn: Dr Greg Forde

Headquarters, PO Box 3000
Johnstown Castle Estate
County Wexford, Ireland
Y35 W821

Ceanncheathrú, Bosca Poist 3000
Eastát Chaisleán Bhaile Sheáin
Contae Loch Garman, Éire
Y35 W821

T: +353 53 9160600
F: +353 53 9160699
E: info@epa.ie
W: www.epa.ie

LoCall: 1890 33 55 99

8 April, 2016

W0290 - 01

Dear Dr. Forde,

In accordance with Article 18(1) of the Waste Management (Licensing) Regulations, I am to inform you of the receipt on 31 March, 2016, of documentation relating to a waste licence application from Port of Cork Company in relation to a facility located at Bantry Inner Harbour Development Phase 1, Seafiled & Reenrour West, Bantry, Cork. This application has been assigned register number W0290 - 01. Further details in relation to the application are supplied on the accompanying attachment.

In accordance with Article 18(3) of the above Regulations, a copy of the Environmental Impact Statement (EIS) submitted with this application also accompanies.

I am to advise you that any person may make a submission to the Agency, in writing, in respect of the application, pursuant to Article 15 of the Regulations, which provides as follows:

Extract from the Waste Management (Licensing) Regulations

Submissions to the Agency regarding applications.

15. For the purpose of Section 40(2)(b) of the Acts, a person may make a written submission to the Agency in relation to -
- (i) an application, and
 - (ii) such plans, documents and other information and particulars, including an environmental impact statement, as are submitted by the applicant in accordance with Articles 12, 13, 14 and 16,
- and the Agency shall not give notice of a proposed decision under Section 42(2) of the Acts before the expiry of a period of one month following the date of a relevant -
- (a) acknowledgement in accordance with Article 14(2)(a), or
 - (b) notice in accordance with Article 16(2)(a), or
 - (c) acknowledgement in accordance with Article 16(4),
- whichever such date is the later.

The application, (EIS if relevant) and associated correspondence, including the acknowledgements and notifications referred to in Article 15, are available to view on the Agency Website at www.epa.ie/licensing.

The Agency will have regard to any submission made in accordance with the Regulations and will write, in due course, to each person who makes such a submission, to advise them of the Agency's proposed decision on the application.

In accordance with Article 22(1)(b) of the Waste Management (Licensing) Regulations, the Agency will write to you to inform you of its proposed decision on the application in due course.



If you have no comments to make in relation to this application, there is no requirement for you to reply to this letter.

Yours sincerely,

Dorota Richards

**Dorota Richards
Programme Officer
Environmental Licensing Programme
Office of Environmental Sustainability**



An Ghníomhaireacht um Chaomhnú Comhshaoil

Waste Management Licensing

Details of Waste Licence Application, in accordance with Article 18(2) of the Waste Management (Licensing) Regulations, as of 8th April 2016.

Application Reference/ Register No.:	W0290-01
Applicant Name/ Address:	Port of Cork Company, Custom House Street, Cork.
Name & Location of Facility/ Premises concerned:	Bantry Inner Harbour Development Phase 1, Seafield & Reenrour West, Bantry, Cork.
National grid reference of facility/ Premises	E99040 N48572

Note: The class or classes of activity concerned in this application are detailed on the reverse.

re: Waste Licence Application Reg No: W0290-01, made by Port of Cork Company, Custom House Street, Cork, in respect of a facility/ premises at Seafield & Reenrou West, Bantry, Cork. The class or classes of activity concerned in the above referenced waste licence application as of 8th April 2016, in accordance with the Third and Fourth Schedules to the Waste Management Act 1996 as amended, are as follows (see the description of these activities below):

Third Schedule Class/es: N/A

Fourth Schedule Classes: 5, 11, 13

The applicant has specified the following as the principal activity: R.5/

THIRD SCHEDULE
<i>Waste Disposal Activities</i>
<u>D 1</u> Deposit into or on to land (e.g. landfill, etc.)
<u>D 2</u> Land treatment (e.g. biodegradation of liquid or sludgy discards in soils, etc.)
<u>D 3</u> Deep injection (e.g. injection of pumpable discards into wells, salt domes or naturally occurring repositories, etc.)
<u>D 4</u> Surface impoundment (e.g. placement of liquid or sludgy discards into pits, ponds or lagoons, etc.)
<u>D 5</u> Specially engineered landfill (e.g. placement into lined discrete cells which are capped and isolated from one another and the environment, etc.)
<u>D 6</u> Release into a water body except seas/oceans
<u>D 7</u> Release to seas/oceans including sea-bed insertion
<u>D 8</u> Biological treatment not specified elsewhere in this Schedule which results in final compounds or mixtures which are discarded by means of any of the operations numbered D 1 to D 12
<u>D 9</u> Physico-chemical treatment not specified elsewhere in this Schedule which results in final compounds or mixtures which are discarded by means of any of the operations numbered D 1 to D 12 (e.g. evaporation, drying, calcination, etc.)
<u>D 10</u> Incineration on land
<u>D 11</u> Incineration at sea (this operation is prohibited by EU legislation and international conventions)
<u>D 12</u> Permanent storage (e.g. emplacement of containers in a mine, etc.)
<u>D 13</u> Blending or mixing prior to submission to any of the operations numbered D 1 to D 12 (if there is not other D code appropriate, this can include preliminary operations prior to disposal including pre-processing such as, amongst others, sorting, crushing, compacting, pelletising, drying, shredding, conditioning or separating prior to submission to any of the operations numbered D1 to D12)
<u>D 14</u> Repackaging prior to submission to any of the operations numbered D 1 to D 13
<u>D 15</u> Storage pending any of the operations numbered D 1 to D 14 (excluding temporary storage (being preliminary storage according to the definition of 'collection' in section 5(1)), pending collection, on the site where the waste is produced).

FOURTH SCHEDULE

Waste Recovery Activities

R 1 Use principally as a fuel or other means to generate energy: This includes incineration facilities dedicated to the processing of municipal solid waste only where their energy efficiency is equal to or above -

- 0.60 for installations in operation and permitted in accordance with applicable Community acts before 1 January 2009,

- 0.65 for installations permitted after 31 December 2008,

using the following formula, applied in accordance with the reference document on Best Available Techniques for Waste Incineration:

$$\text{Energy efficiency} = (E_p - (E_f + E_i)) / (0.97 \times (E_w + E_f))$$

where –

‘E_p’ means annual energy produced as heat or electricity calculated with energy in the form of electricity being multiplied by 2.6 and heat produced for commercial use multiplied by 1.1 (GJ/year),

‘E_f’ means annual energy input to the system from fuels contributing to the production of steam (GJ/year),

‘E_w’ means annual energy contained in the treated waste calculated using the net calorific value of the waste (GJ/year),

‘E_i’ means annual energy imported excluding E_w and E_f (GJ/year),

‘0.97’ is a factor accounting for energy losses due to bottom ash and radiation.

R 2 Solvent reclamation/regeneration

R 3 Recycling/reclamation of organic substances which are not used as solvents (including composting and other biological transformation processes), which includes gasification and pyrolysis using the components as chemicals

R 4 Recycling/reclamation of metals and metal compounds

R 5 Recycling/reclamation of other inorganic materials, which includes soil cleaning resulting in recovery of the soil and recycling of inorganic construction materials

R 6 Regeneration of acids or bases

R 7 Recovery of components used for pollution abatement

R 8 Recovery of components from catalysts

R 9 Oil re-refining or other reuses of oil

R 10 Land treatment resulting in benefit to agriculture or ecological improvement

R 11 Use of waste obtained from any of the operations numbered R 1 to R 10

R 12 Exchange of waste for submission to any of the operations numbered R 1 to R 11 (if there is no other R code appropriate, this can include preliminary operations prior to recovery including pre-processing such as, amongst others, dismantling, sorting, crushing, compacting, pelletising, drying, shredding, conditioning, repackaging, separating, blending or mixing prior to submission to any of the operations numbered R1 to R11)

R 13 Storage of waste pending any of the operations numbered R 1 to R 12 (excluding temporary storage (being preliminary storage according to the definition of ‘collection’ in section 5(1)), pending collection, on the site where the waste is produced)”

1. The first part of the document discusses the importance of maintaining accurate records of all transactions and activities. It emphasizes that this is crucial for ensuring transparency and accountability in the organization's operations.

2. The second part of the document outlines the various methods and tools used to collect and analyze data. It highlights the need for consistent and reliable data collection processes to support effective decision-making.

3. The third part of the document focuses on the role of technology in data management and analysis. It discusses how modern software solutions can streamline data collection, storage, and reporting, thereby improving efficiency and accuracy.

4. The fourth part of the document addresses the challenges associated with data management, such as data quality, security, and integration. It provides strategies to overcome these challenges and ensure that the data is reliable and secure.

5. The fifth part of the document discusses the importance of data governance and the role of various stakeholders in ensuring that data is used ethically and in compliance with relevant regulations.

6. The sixth part of the document provides a summary of the key findings and recommendations. It emphasizes the need for a comprehensive data management strategy that aligns with the organization's overall goals and objectives.

7. The seventh part of the document discusses the future of data management and the emerging trends in the field. It highlights the potential of artificial intelligence and machine learning to revolutionize data analysis and decision-making.

8. The eighth part of the document provides a conclusion and a call to action. It encourages the organization to embrace a data-driven culture and to invest in the necessary resources and skills to succeed in the digital age.

9. The ninth part of the document discusses the importance of data literacy and the need for ongoing training and development for all employees. It emphasizes that data is a valuable asset, and everyone in the organization should be able to work with it effectively.

10. The tenth part of the document provides a final summary and a list of references. It includes a list of key sources used in the document and a list of related documents for further reading.

11. The eleventh part of the document discusses the importance of data privacy and the need to protect sensitive information. It highlights the various risks associated with data breaches and the steps that can be taken to prevent them.

12. The twelfth part of the document provides a detailed overview of the data management process, from data collection to data analysis and reporting. It includes a flowchart illustrating the process and a list of key steps to follow.

13. The thirteenth part of the document discusses the importance of data security and the need to implement robust security measures. It highlights the various threats to data security and the steps that can be taken to mitigate them.

14. The fourteenth part of the document provides a detailed overview of the data management process, from data collection to data analysis and reporting. It includes a flowchart illustrating the process and a list of key steps to follow.

15. The fifteenth part of the document discusses the importance of data governance and the need to establish clear policies and procedures. It highlights the various roles and responsibilities involved in data governance and the steps that can be taken to ensure compliance.

16. The sixteenth part of the document provides a detailed overview of the data management process, from data collection to data analysis and reporting. It includes a flowchart illustrating the process and a list of key steps to follow.

17. The seventeenth part of the document discusses the importance of data literacy and the need for ongoing training and development for all employees. It emphasizes that data is a valuable asset, and everyone in the organization should be able to work with it effectively.

18. The eighteenth part of the document provides a final summary and a list of references. It includes a list of key sources used in the document and a list of related documents for further reading.

19. The nineteenth part of the document discusses the importance of data privacy and the need to protect sensitive information. It highlights the various risks associated with data breaches and the steps that can be taken to prevent them.

20. The twentieth part of the document provides a detailed overview of the data management process, from data collection to data analysis and reporting. It includes a flowchart illustrating the process and a list of key steps to follow.

21. The twenty-first part of the document discusses the importance of data security and the need to implement robust security measures. It highlights the various threats to data security and the steps that can be taken to mitigate them.

22. The twenty-second part of the document provides a detailed overview of the data management process, from data collection to data analysis and reporting. It includes a flowchart illustrating the process and a list of key steps to follow.

23. The twenty-third part of the document discusses the importance of data governance and the need to establish clear policies and procedures. It highlights the various roles and responsibilities involved in data governance and the steps that can be taken to ensure compliance.

24. The twenty-fourth part of the document provides a final summary and a list of references. It includes a list of key sources used in the document and a list of related documents for further reading.

25. The twenty-fifth part of the document discusses the importance of data literacy and the need for ongoing training and development for all employees. It emphasizes that data is a valuable asset, and everyone in the organization should be able to work with it effectively.



Environmental Protection Agency
An Ghníomhaireacht um Chaomhnú Comhshaoil

Mr Paddy Browne
Head of Crops, Environment & Land Use
Teagasc
Johnstown Castle Research Centre
Johnstown Castle Estate
County Wexford
Attention: Mr Paddy Browne

Headquarters, PO Box 3000
Johnstown Castle Estate
County Wexford, Ireland
Y35 W821

Ceanncheathrú, Bosca Poist 3000
Eastát Chaisleán Bhaile Sheáin
Contae Loch Garman, Éire
Y35 W821

T: +353 53 9160600
F: +353 53 9160699
E: info@epa.ie
W: www.epa.ie

LoCall: 1890 33 55 99

8 April, 2016

W0290 - 01

Dear Mr Browne,

In accordance with Article 18(1) of the Waste Management (Licensing) Regulations, I am to inform you of the receipt on 31 March, 2016, of documentation relating to a waste licence application from Port of Cork Company in relation to a facility located at Bantry Inner Harbour Development Phase 1, Seafield & Reenrour West, Bantry, Cork. This application has been assigned register number W0290 - 01. Further details in relation to the application are supplied on the accompanying attachment.

In accordance with Article 18(3) of the above Regulations, a copy of the Environmental Impact Statement (EIS) submitted with this application also accompanies.

I am to advise you that any person may make a submission to the Agency, in writing, in respect of the application, pursuant to Article 15 of the Regulations, which provides as follows:

Extract from the Waste Management (Licensing) Regulations

Submissions to the Agency regarding applications.

15. For the purpose of Section 40(2)(b) of the Acts, a person may make a written submission to the Agency in relation to -
- (i) an application, and
 - (ii) such plans, documents and other information and particulars, including an environmental impact statement, as are submitted by the applicant in accordance with Articles 12, 13, 14 and 16,
- and the Agency shall not give notice of a proposed decision under Section 42(2) of the Acts before the expiry of a period of one month following the date of a relevant -
- (a) acknowledgement in accordance with Article 14(2)(a), or
 - (b) notice in accordance with Article 16(2)(a), or
 - (c) acknowledgement in accordance with Article 16(4),
- whichever such date is the later.

The application, (EIS if relevant) and associated correspondence, including the acknowledgements and notifications referred to in Article 15, are available to view on the Agency Website at www.epa.ie/licensing.

The Agency will have regard to any submission made in accordance with the Regulations and will write, in due course, to each person who makes such a submission, to advise them of the Agency's proposed decision on the application.

In accordance with Article 22(1)(b) of the Waste Management (Licensing) Regulations, the Agency will write to you to inform you of its proposed decision on the application in due course.



If you have no comments to make in relation to this application, there is no requirement for you to reply to this letter.

Yours sincerely,

Dorota Richards

Dorota Richards
Programme Officer
Environmental Licensing Programme
Office of Environmental Sustainability



An Ghníomhaireacht um Chaomhnú Comhshaoil

Waste Management Licensing

Details of Waste Licence Application, in accordance with Article 18(2) of the Waste Management (Licensing) Regulations, as of 8th April 2016.

Application Reference/ Register No.:	W0290-01
Applicant Name/ Address:	Port of Cork Company, Custom House Street, Cork.
Name & Location of Facility/ Premises concerned:	Bantry Inner Harbour Development Phase 1, Seafiled & Reenrour West, Bantry, Cork.
National grid reference of facility/ Premises	E99040 N48572

Note: The class or classes of activity concerned in this application are detailed on the reverse.

re: Waste Licence Application Reg No: W0290-01, made by Port of Cork Company, Custom House Street, Cork, in respect of a facility/ premises at Seafiled & Reenrou West, Bantry, Cork. The class or classes of activity concerned in the above referenced waste licence application as of 8th April 2016, in accordance with the Third and Fourth Schedules to the Waste Management Act 1996 as amended, are as follows (see the description of these activities below):

Third Schedule Class/es: N/A

Fourth Schedule Classes: 5, 11, 13

The applicant has specified the following as the principal activity: R.5/

THIRD SCHEDULE
<i>Waste Disposal Activities</i>
<u>D 1</u> Deposit into or on to land (e.g. landfill, etc.)
<u>D 2</u> Land treatment (e.g. biodegradation of liquid or sludgy discards in soils, etc.)
<u>D 3</u> Deep injection (e.g. injection of pumpable discards into wells, salt domes or naturally occurring repositories, etc.)
<u>D 4</u> Surface impoundment (e.g. placement of liquid or sludgy discards into pits, ponds or lagoons, etc.)
<u>D 5</u> Specially engineered landfill (e.g. placement into lined discrete cells which are capped and isolated from one another and the environment, etc.)
<u>D 6</u> Release into a water body except seas/oceans
<u>D 7</u> Release to seas/oceans including sea-bed insertion
<u>D 8</u> Biological treatment not specified elsewhere in this Schedule which results in final compounds or mixtures which are discarded by means of any of the operations numbered D 1 to D 12
<u>D 9</u> Physico-chemical treatment not specified elsewhere in this Schedule which results in final compounds or mixtures which are discarded by means of any of the operations numbered D 1 to D 12 (e.g. evaporation, drying, calcination, etc.)
<u>D 10</u> Incineration on land
<u>D 11</u> Incineration at sea (this operation is prohibited by EU legislation and international conventions)
<u>D 12</u> Permanent storage (e.g. emplacement of containers in a mine, etc.)
<u>D 13</u> Blending or mixing prior to submission to any of the operations numbered D 1 to D 12 (if there is not other D code appropriate, this can include preliminary operations prior to disposal including pre-processing such as, amongst others, sorting, crushing, compacting, pelletising, drying, shredding, conditioning or separating prior to submission to any of the operations numbered D1 to D12)
<u>D 14</u> Repackaging prior to submission to any of the operations numbered D 1 to D 13
<u>D 15</u> Storage pending any of the operations numbered D 1 to D 14 (excluding temporary storage (being preliminary storage according to the definition of 'collection' in section 5(1)), pending collection, on the site where the waste is produced).

FOURTH SCHEDULE

Waste Recovery Activities

R 1 Use principally as a fuel or other means to generate energy: This includes incineration facilities dedicated to the processing of municipal solid waste only where their energy efficiency is equal to or above -

- 0.60 for installations in operation and permitted in accordance with applicable Community acts before 1 January 2009,

- 0.65 for installations permitted after 31 December 2008,

using the following formula, applied in accordance with the reference document on Best Available Techniques for Waste Incineration:

$$\text{Energy efficiency} = (E_p - (E_f + E_i)) / (0.97 \times (E_w + E_f))$$

where –

‘E_p’ means annual energy produced as heat or electricity calculated with energy in the form of electricity being multiplied by 2.6 and heat produced for commercial use multiplied by 1.1(GJ/year),

‘E_f’ means annual energy input to the system from fuels contributing to the production of steam (GJ/year),

‘E_w’ means annual energy contained in the treated waste calculated using the net calorific value of the waste (GJ/year),

‘E_i’ means annual energy imported excluding E_w and E_f(GJ/year),

‘0.97’ is a factor accounting for energy losses due to bottom ash and radiation.

R 2 Solvent reclamation/regeneration

R 3 Recycling/reclamation of organic substances which are not used as solvents (including composting and other biological transformation processes), which includes gasification and pyrolysis using the components as chemicals

R 4 Recycling/reclamation of metals and metal compounds

R 5 Recycling/reclamation of other inorganic materials, which includes soil cleaning resulting in recovery of the soil and recycling of inorganic construction materials

R 6 Regeneration of acids or bases

R 7 Recovery of components used for pollution abatement

R 8 Recovery of components from catalysts

R 9 Oil re-refining or other reuses of oil

R 10 Land treatment resulting in benefit to agriculture or ecological improvement

R 11 Use of waste obtained from any of the operations numbered R 1 to R 10

R 12 Exchange of waste for submission to any of the operations numbered R 1 to R 11 (if there is no other R code appropriate, this can include preliminary operations prior to recovery including pre-processing such as, amongst others, dismantling, sorting, crushing, compacting, pelletising, drying, shredding, conditioning, repackaging, separating, blending or mixing prior to submission to any of the operations numbered R1 to R11)

R 13 Storage of waste pending any of the operations numbered R 1 to R 12 (excluding temporary storage (being preliminary storage according to the definition of ‘collection’ in section 5(1)), pending collection, on the site where the waste is produced)”

The first part of the document discusses the importance of maintaining accurate records of all transactions. It emphasizes that every entry should be supported by a valid receipt or invoice. This ensures transparency and allows for easy verification of the data.

Secondly, the document highlights the need for regular audits. By conducting periodic reviews, any discrepancies or errors can be identified and corrected promptly. This proactive approach helps in maintaining the integrity of the financial data.

Furthermore, it is advised to use standardized accounting practices. This includes following established guidelines for recording and reporting financial information. Consistency in these practices is crucial for meaningful analysis and comparison over time.

The document also touches upon the importance of data security. All financial records should be stored in a secure environment, protected from unauthorized access. Regular backups are recommended to prevent data loss in case of a system failure or disaster.

In conclusion, the document provides a comprehensive overview of the key principles for effective financial record-keeping. Adhering to these guidelines will help in ensuring the accuracy and reliability of the organization's financial statements.