

Unit 15
Melbourne Business Park
Model Farm Road
Cork



E:info@ocallaghanmoran.com
www.ocallaghanmoran.com
T: 021 434 5366

ANNUAL ENVIRONMENTAL REPORT
STARRUS ECO HOLDINGS LTD
MATERIALS RECOVERY FACILITY
SIX CROSS ROADS BUSINESS PARK
WATERFORD
LICENCE NO. W0177-03
JANUARY 2015 – DECEMBER 2015

Prepared For: -

Starrus Eco Holdings Ltd.,
Greenstar
Unit 6,
Ballyogan Business Park,
Ballyogan Road,
Sandyford,
Dublin 18.

Prepared By: -

O' Callaghan Moran & Associates,
Unit 15 Melbourne Business Park,
Model Farm Road,
Cork.

4th April 2016

Project	Annual Environmental Report 2015			
Client	Starrus Eco Holdings Ltd. W0177-03			
Report No	Date	Status	Prepared By	Reviewed By
150480506	29/03/2016	Draft	Martina Gleeson PhD	Jim O'Callaghan MSc
	04/04/2016	Final	Martina Gleeson PhD	Jim O'Callaghan MSc

TABLE OF CONTENTS

	<u>PAGE</u>
1. INTRODUCTION.....	1
2. SITE DESCRIPTION.....	2
2.1 SITE LOCATION AND LAYOUT	2
2.2 WASTE MANAGEMENT ACTIVITIES	2
2.2.1 Waste Types & Processes.....	2
2.2.2 Plant List.....	4
3. EMISSION MONITORING	5
3.1 SURFACE WATER MONITORING	5
3.2 FOUL WATER MONITORING	7
3.3 GROUNDWATER MONITORING.....	10
3.4 NOISE MONITORING	11
3.5 DUST MONITORING	12
4. SITE DEVELOPMENT WORKS.....	14
4.1 ENGINEERING WORKS.....	14
4.2 SUMMARY OF RESOURCE & ENERGY CONSUMPTION	14
4.3 BUND INTEGRITY TESTING.....	14
5. WASTE RECEIVED AND CONSIGNED FROM THE FACILITY.....	15
6. ENVIRONMENTAL INCIDENTS AND COMPLAINTS	18
6.1 INCIDENTS.....	18
6.2 REGISTER OF COMPLAINTS.....	18
7. ENVIRONMENTAL DEVELOPMENT & CONTROL.....	19
7.1 ENVIRONMENTAL MANAGEMENT PROGRAMME REPORT	19
7.1.1 Site Management Structure	19
7.1.2 Staff Training.....	20
7.2 ENVIRONMENTAL MANAGEMENT PROGRAMME.....	20
7.2.1 Schedule of Objectives 2015	20
7.2.2 Schedule of Objectives 2016	20
7.3 COMMUNICATIONS PROGRAMME	20
7.4 REPORT FINANCIAL PROVISION.....	23
7.5 NUISANCE CONTROLS	23
7.6 WASTEWATER VOLUMES	23
8. OTHER REPORTS.....	24
8.1 EUROPEAN POLLUTANT RELEASE AND TRANSFER REGISTER REGULATION.....	24

APPENDIX 1	-	European Pollutant Release and Transfer Register
APPENDIX 2	-	Procedures List

1. INTRODUCTION

This is the 2015 Annual Environmental Report (AER) for the Starrus Eco Holdings Ltd., (Greenstar) Materials Recovery Facility (MRF) at Six Cross Roads Business Park, Waterford (W0177-03) and covers the reporting period January 2015 to December 2015. Transfer of the licence from Greenstar Limited to Starrus Eco Holdings Ltd was completed in March 2014.

The content is based on Schedule F of the Waste Licence and the report format follows guidelines set in the “Guidance Note for Annual Environmental Report” issued by the Environmental Protection Agency (Agency)¹. Cognisance was also taken of the Agency AER Draft Guidance Document and AER Information Templates issued by the Agency in January 2012².

¹ EPA (Environmental Protection Agency) 1999 Waste Licensing – Draft Guidance on Environmental Management Systems and Reporting to the Agency

² EPA (Environmental Protection Agency) 2012 Draft AER Guidance Document

2. SITE DESCRIPTION

2.1 Site Location and Layout

The subject site is located at Six Cross Roads Business Park, Carriganard, approximately 3.5 km southwest of Waterford City Centre. It is in an industrial area on the outskirts of the City. The area to the west of the facility is mainly farmland. The nearest residential area is the Ballybeg housing estate, which is approximately 500 m to the north. The facility encompasses approximately 9,300 m² and is accessed through the Six Cross Roads Business Park. The western site boundary is a cul-de-sac, the southern and eastern boundaries are formed by the Six Cross Roads Business Park and the northern boundary by the closed Waterford City Compost Facility.

There are two waste processing buildings. The Main Building houses the offices and Commercial and Industrial waste (C&I) recycling activities and bulk waste transfer. The Lean-To, which is to the west of the Main Building, is used for recovered timber, green waste and bulky waste processing and additional bale storage. The open yard areas are paved and are used for external waste storage bays (C&D, glass, and metals), skip storage, truck parking and a vehicle washing area. A civic amenity area is established in the southwest of the facility.

2.2 Waste Management Activities

The facility is licensed to accept and process 80,000 tonnes of waste per annum, comprising household waste, construction and demolition waste (C&D) and commercial and industrial waste (C&I).

2.2.1 Waste Types & Processes

The facility is licensed to accept the following waste types and quantities, as specified in Schedule A of the licence: -

- Household (25,000 tonnes)
- Commercial & Industrial (50,000 tonnes)
- Construction & Demolition (5,000 tonnes)

No hazardous wastes are accepted. The maximum amount of each waste type accepted, may be altered with the prior agreement of the Agency as long as the total maximum tonnage is not exceeded.

The key processes carried out at the facility include: -

- Segregation of recyclable materials (paper, cardboards, plastic, wood, metals, glass);
- Recycling of hard plastics through granulation;
- Baling of recyclable materials;
- Bulking up of Municipal Solid Waste;
- Segregation and bulking of C&D waste;
- Transfer of recovered and residual materials to appropriately licensed recycling, recovery and disposal outlets;

Household Waste

Residual, or black bin household waste, arrives in refuse collection vehicles and is transferred from the vehicles into large bulk transporters for consignment to an appropriately licensed landfill. Source segregated household dry recyclables are baled and stored prior to transfer to off-site permitted/licensed recycling facilities.

Commercial and Industrial Waste

Both mixed and segregated commercial waste is collected from commercial sources. Commercial waste containing recyclable material (paper, cardboard, glass, metal, green waste and wood) is delivered to the facility both by permitted third party hauliers and by GES vehicles. Plastic, card and paper are baled and stored prior to transfer to a suitable permitted/licensed off-site recycling outlet. Biodegradable wastes suitable for composting which is accepted at the facility are sent to an offsite composting facility. The remaining non-recyclable material is bulked and sent to appropriately licensed landfills. Hard plastics (PVC and Polypropylene) are shredded to form raw materials for plastic goods manufacturers.

C&D Waste

Waste loads include mixed construction and demolition wastes and soil and stone. The material arrives in skips of varying sizes. The loads are inspected and then processed. The majority of the incoming C&D material is recovered and sent off-site either for re-use, or recycling. The non-recyclable materials are transferred to a licensed landfill.

2.2.2 Plant List

A list of the plant in use at the facility is in Table 2.1. The plant provides 100% duty and 50% standby for waste processing.

Table 2.1 Plant List – 2015

No.	Plant	Model	Operational Capacity tpd	Standby Capacity tpd
1	Loading Shovel	Volvo L90F	200	120
1	Excavating Grab	Caterpillar 312	150	100
1	Excavating Grab	Volvo	150	100
2	Forklift	Jungheinrich	2.5 t	
1	Timber shredder	Doppstadt AK430	20t/hour	
1	Road Sweeper	Iveco 180E23	500 lts	
1	Recycling Bailer	PAAL PGS15050	15/20T/hour	
1	Plastic granulator	Enginplast BA800	600kgs/hour	
1	Confidential shredder	Ulster U-15	15KW	

In 2015, the facility replaced a Caterpillar excavating grab with a Volvo excavating grab.

3. EMISSION MONITORING

The monitoring specified in the licence includes surface water, wastewater, groundwater, dust and noise monitoring. The monitoring locations are shown on Figure 3.1. The results are submitted to the Agency at quarterly intervals and an overview of the monitoring completed in 2015 is presented in this section.

3.1 Surface Water Monitoring

The facility's surface water drainage system collects run-off from paved areas and roof rainwater and discharges at separate locations to a culverted stream serving the Business Park.

The original agreed monitoring locations were SW-1, SW-2, SW-3 and SW-4. In June 2012 the Agency approved the replacement of SW-1 and 2 with SW-5, which is the point at which the combined discharge point to the stream for the storm sewers from the east and south of the site and the sewers that take run-off from the Main Recycling Building and Offices.

SW-3 is downstream of an oil interceptor on the drain that takes runoff from the western yard, and is a separate discharge point. SW-4 is at the discharge point to the stream for run-off roof of the Lean To in the north western section of the site. The locations are shown on Figure 3.1.

The monitoring results are in Tables 3.1 to 3.10. Due to dry conditions in some months no surface water samples were obtained. The results include the proposed warning and action levels developed by Greenstar in Q1 2010. There were no exceedances of the warning levels or the action levels throughout 2015.

Table 3.1 Surface Water Monitoring Results – 12th January 2015

Parameter	Units	SW-3	SW-4	SW-5	Warning Levels	Action Level
Ammonia	mg/l	0.22	0.26	0.12	2.0	4.4
Electrical Conductivity	mS/cm	0.190	0.218	0.465	0.466	0.774

Table 3.2 Surface Water Monitoring Results – 9th March 2015

Parameter	Units	SW-3	SW-4	SW-5	Warning Levels	Action Level
Ammonia	mg/l	0.16	0.30	1.23	2.0	4.4
Electrical Conductivity	mS/cm	0.144	0.079	0.137	0.466	0.774

Table 3.3 Surface Water Monitoring Results – 6th July 2015

Parameter	Units	SW-3	SW-4	SW-5	Warning Levels	Action Level
Ammonia	mg/l	0.23	0.44	0.07	2.0	4.4
Electrical Conductivity	mS/cm	0.009	0.003	0.028	0.466	0.774

Table 3.4 Surface Water Monitoring Results – 24th July 2015

Parameter	Units	SW-3	SW-4	SW-5	Warning Levels	Action Level
Ammonia	mg/l	0.09	0.48	0.26	2.0	4.4
Electrical Conductivity	mS/cm	0.069	0.039	0.398	0.466	0.774

Table 3.5 Surface Water Monitoring Results – 14th September 2015

Parameter	Units	SW-3	SW-4	SW-5	Warning Levels	Action Level
Ammonia	mg/l	0.40	0.16	0.41	2.0	4.4
Electrical Conductivity	mS/cm	0.265	0.039	0.064	0.466	0.774

Table 3.6 Surface Water Monitoring Results – 27th October 2015

Parameter	Units	SW-3	SW-4	SW-5	Warning Levels	Action Level
Ammonia	mg/l	0.05	0.08	0.33	2.0	4.4
Electrical Conductivity	mS/cm	0.062	0.018	0.068	0.466	0.774

Table 3.7 Surface Water Monitoring Results –5th November 2015

Parameter	Units	SW-3	SW-4	SW-5	Warning Levels	Action Level
Ammonia	mg/l	0.09	0.13	0.56	2.0	4.4
Electrical Conductivity	mS/cm	0.063	0.029	0.057	0.466	0.774

Table 3.8 Surface Water Monitoring Results – 17th November 2015

Parameter	Units	SW-3	SW-4	SW-5	Warning Levels	Action Level
Ammonia	mg/l	1.06	0.34	1.16	2.0	4.4
Electrical Conductivity	mS/cm	0.426	0.038	0.117	0.466	0.774

Table 3.9 Surface Water Monitoring Results – 4th December 2015

Parameter	Units	SW-3	SW-4	SW-5	Warning Levels	Action Level
Ammonia	mg/l	0.27	0.18	0.39	2.0	4.4
Electrical Conductivity	mS/cm	0.154	0.016	0.027	0.466	0.774

Table 3.10 Surface Water Monitoring Results – 14th December 2015

Parameter	Units	SW-3	SW-4	SW-5	Warning Levels	Action Level
Ammonia	mg/l	0.26	0.12	0.41	2.0	4.4
Electrical Conductivity	mS/cm	0.149	0.020	0.122	0.466	0.774

3.2 Foul water Monitoring

The wastewater discharge (vehicle cleaning and run off from hard-standing at the entrance to the main recycling building) to the municipal sewer was monitored at quarterly intervals up to Q1 2013.

The Agency amended the licence in Q1 2013 allowing an increase in the detergent ELV and the volume of waste water discharged to the sewer. The monitoring frequency was increased from quarterly to monthly. The wastewater passes through a petrol/oil interceptor before discharging to the Six Cross Roads Business Park sewer before ultimately connecting to the municipal sewer. Flow is measured using a continuous flow meter.

Due to an oversight a sample was not collected in February 2015. It was not possible to collect a sample in June 2015.

The wastewater sampling is carried out at location FW-1, as shown on Figure 3.1. FW-1 is downstream of the interceptor and the continuous flow meter. The monitoring results are presented in Table 3.11, which also includes the emission limit values (ELV) set in the Licence.

The ELV for the grab sample were not exceeded during monitoring events in February, May (x 2 events), August and December.

The BOD was above the ELV for a grab sample in March, October and December. The TSS concentration exceeded the ELV for a grab sample in March and December. The COD levels were above the ELV for a grab sample in May. All parameters were below the ELVs in April, July, August, September and November 2015.

Table 3.11 Foul water Monitoring Results 2015

Parameter	Units	Jan	Mar	April	May	July	Aug	Sept	Oct	Nov	Dec	Emission Limit	Emission Limit (Grab Sample)*
pH	pH Units	6.29	6.09	6.17	5.40	6.57	6.49	6.56	5.92	6.93	5.98	6 – 9	6-9
BOD	mg/l	441	892	367	381	40	259	87	530	50	563	400	480
COD	mg/l	496	1,120	572	2,630	58	631	394	1,141	213	860	1,100	1,320
Total Suspended Solids	mg/l	85	395	36	251	85	25	250	122	100	886	300	360
Oils, Fats & Greases	mg/l	<0.010	1.690	0.45	1.43	1.180	0.790	1.980	<0.01	0.18	1.1	10	12
Surfactants (MBAS)	mg/l	2	4.2	1.5	2	1.4	0.4	3.1	4.3	1.5	0.3	30	36

* Condition 4.1.2 (i) For parameters other than pH and temperature, no grab sample value shall exceed 1.2 times the emission limit value.

3.3 Groundwater Monitoring

Groundwater monitoring is not specified in the licence, however it is carried out annually at two monitoring wells (BH-1 and BH-3) as agreed with the Agency. BH-1 is off-site and up-gradient in the adjoining closed Waterford City Council Composting facility (W0234-01) and BH-3 is on-site as shown on Figure 3.1.

There are no emission limits or trigger levels set in the licence and so the results are compared to the Interim Guideline Values (IGV) on groundwater quality published by the Agency and the Groundwater Regulations Threshold Value (GTV), which were introduced in 2010 (S.I. 9 of 2010).

The IGV represent typical background or unpolluted conditions; however levels higher than the IGV may occur naturally depending on the local geological and hydrogeological conditions. While the GTV are more appropriate for large scale abstraction wells used for potable supply, they can be used to assess the significance of contamination where present in non-potable groundwater supplies. Because GTVs have not been established for all of the parameters monitored, the relevant IGV was used for comparative purposes.

The results are shown on Table 3.12 and indicate that there is no evidence that site activities are impacting on groundwater quality. The IGVs or GTVs were not exceeded at either location in August 2015. The monitoring carried out showed that the groundwater quality is good.

High levels of suspended solids are present in each well. Based on the borehole logs, the well depths range from 22 to 27m bgl (meters below ground level). BH-1 is exclusively in the subsoils, while BH-3 straddles the subsoils and the bedrock, which is a siltstone. The subsoils in BH-1 are described as very fine grained alluvial deposits, while in BH-3 they are described as sand with small elements of clay. There is a gravel pack around the well pipe but no filter sock on the slotted section. Given the absence of a filter sock and the nature of the subsoils, it is not unexpected that suspended solids present in the groundwater are being drawn into the well pipe during purging. They are naturally occurring, are not indicative of contamination and are of no environmental significance.

Table 3.12 Groundwater Monitoring Results – August 2015

Parameter	Units	BH-1	BH-3	GTV	IGV
BOD	mg/l	4	1	-	-
Dissolved Oxygen	mg/l	7	8	-	NAC
Oils, Fats & Greases	mg/l	<0.01	<0.01	-	-
Total Phosphorus	mg/l	1.114	0.559	-	-
Ammoniacal Nitrogen	mg/l	0.03	<0.03	0.065 - 0.175	-
Conductivity	mS/cm	0.591	0.472	1.875	-
DRO	mg/l	<0.01	<0.01	-	0.01
Aliphatic Hydrocarbons	mg/l	<0.01	<0.01	-	-
Undecane	mg/l	<0.01	<0.01	-	-
Total Suspended Solids	mg/l	4,589	2,127	-	-

3.4 Noise Monitoring

The annual noise survey was conducted in September 2015. The monitoring locations include three boundary locations (N1 – N3) and two off site noise sensitive locations (NS1 and NS2). The survey was conducted when the site was fully operational and confirmed that noise emissions fully complied with the licence and that the facility is not impacting negatively on the nearest sensitive receptors. A summary of the noise results is shown on Table 3.13.

Table 3.13 Noise Monitoring Results 2015

Station	Date	Time	Wind vector	L _{Aeq} 30 min dB	L _{AF10} 30 min dB	L _{AF90} 30 min dB	Specific L _{Aeq} 30 min dB
N1	03.09.15	0836-0906	0	69	72	59	69
	Site: Intermittent truck and plant operations in nearest yard entirely dominant. Extraneous: None audible.						
N2	03.09.15	0800-0830	+	71	62	58	71
	Site: Intermittent truck and plant movements around site dominant, and intrusive when passing SLM. Extraneous: During lulls in site emissions, activity including truck and plant movements at adjacent offsite yard dominant. Distant road traffic audible at low level continuously in background.						
N3	03.09.15	1036-1106	0	52	55	47	50
	Site: Truck and plant movements intermittently audible, ranging from low to clear depending on proximity. Extraneous: Road traffic to NW and W continuously clearly audible, dominating noise environment. Bird song/calls, aircraft and lightly rustling vegetation.						
NS1	03.09.15	0957-1027	-	57	61	45	<<45
	Site: No emissions audible. Extraneous: Intermittent passing traffic dominant when present. Distant traffic also continuously audible at low level. Bird song/calls, aircraft and lightly rustling vegetation. Chainsaw continuously audible at low level at several hundred metres.						
NS2	03.09.15	0921-0951	-	66	70	50	<<50
	Site: No emissions audible. Extraneous: Frequent passing road traffic dominant when present, and continuously audible on approaches and in distance. Bird song/calls, aircraft and lightly rustling trees.						

Specific L_{Aeq}: Level considered attributable to source under consideration, determined using real time assessment, field notes, time history profiles, statistical analysis, frequency spectra, spectral statistics and near field correction if applicable.

Audibility scale: Inaudible; faintly audible; slightly audible; audible at low level; quite audible; clearly audible; dominant; intrusive; excessive.

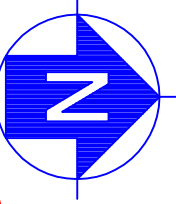
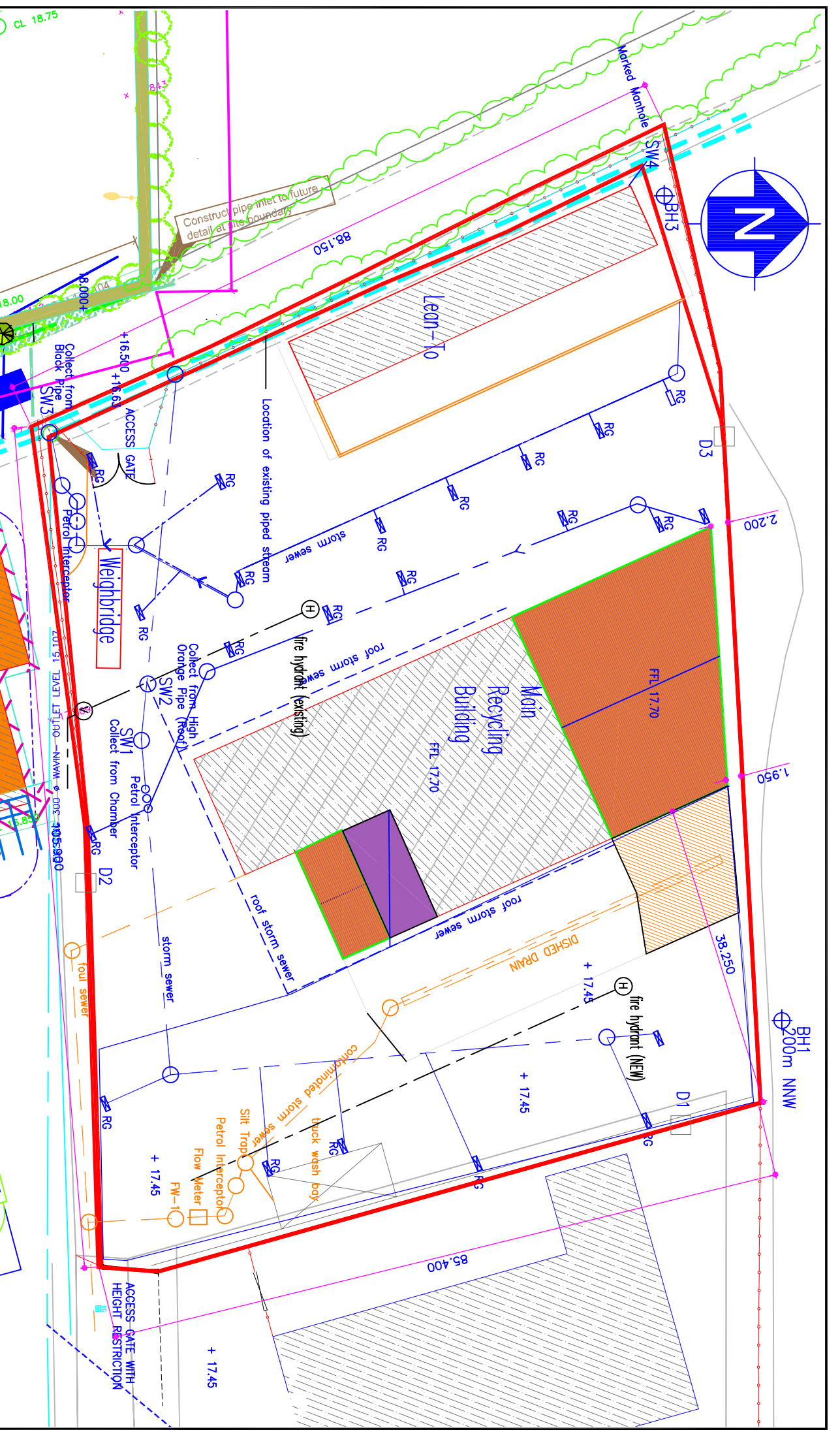
3.5 Dust Monitoring

Dust monitoring was carried out on three occasions at three on-site locations (D1, D2 and D3) in June, July and August 2015. The results of the monitoring are included on Table 3.14.

The dust emission limit (350 mg/m²/day) was not exceeded. No complaints relating to dust were received from neighbouring premises during the reporting period.

Table 3.14 Dust Monitoring Results 2015

Dust Emission (mg/m ² /day)	June	July	August	Emission Limit
Sample Location	(30 days)	(30 days)	(30 days)	(mg/m ² /day)
D1	27.6	17.8	26.7	350
D2	22.216	31.5	35.3	350
D3	98.1	56.2	58.2	350



O'Callaghan Moran & Associates,
Granary House, Rutland Street,
Cork, Ireland.

Tel. (021) 4321521 Fax: (021) 4321522
email : info@ocallagharmoran.com

This drawing is the property of O'Callaghan Moran & Associates and shall not be used, reproduced or disclosed to anyone without the prior written permission of O'Callaghan Moran & Associates and shall be returned upon request.

CLIENT	Greenstar Environmental Services
TITLE	Monitoring Locations – Waterford

details

FIGURE No.	3.1
SCALE	NTS
REV.	A

4. SITE DEVELOPMENT WORKS

4.1 Engineering Works

The following works were carried out on site in 2015

- Upgrade of the Polypro line - Dust control and Health & Safety (Completed Q1)
- Wheelie Bin Storage Area (Completed Q2)
- Installation of Birdwatch starling deterrent (Completed Q2)

4.2 Summary of Resource & Energy Consumption

Table 4.1 presents an estimate of the resources used on-site during the reporting period and in 2015.

Table 4.1 Estimate of Resources Used On-Site in 2014 & 2015

Resources	Quantities 2014	Quantities 2015
Diesel (green)	58,169 Litres	54,998 litres
Electricity	473,900 kwh	71,376 kwh
Hydraulic Oil	2,065 Litres	2,750 litres
AdBlu Diesel Additive	145 Litres	2,220 litres
Odour Neutraliser	0 litres	0 litres

4.3 Bund Integrity Testing

Condition 3.11.5 of the licence requires that tank and bund testing be carried out at least once every three years. Integrity testing was carried out in February 2014 and the bunds, interceptors and drainage lines were passed fit for purpose. The reports are retained at the facility for Agency inspection.

5. WASTE RECEIVED AND CONSIGNED FROM THE FACILITY

Table 5.1 shows the total quantities of waste received and consigned from the facility in 2015. A breakdown of the waste types is provided in accordance with the European Waste Catalogue and Hazardous Waste list. A more detailed description of the wastes accepted and consigned is provided in the PRTR submission in Appendix 1. The waste received and consigned in 2015 is presented in Table 5.1. For comparative purposes the amounts of waste received and consigned from 2009 to 2014 are presented in Table 5.2.

The total quantity of waste received was 46,717.93 tonnes. The total waste consigned was 46,667.54 tonnes. The records show that more waste was consigned from the site than accepted. The difference was 50.39 tonnes. This is due to material being stored in the facility at the end of 2014 prior to consignment in Q1 2015. All the wastes consigned went to authorised recovery and disposal facilities approved by the Agency.

Table 5.1 Waste Received & Consigned 2015

EWC	Description	Waste In	Waste Out
12 12 02	Ferrous Metal Dust & Particles		14.22
15 01 01	Paper and cardboard packaging	4,037.783	5,757.35
15 01 02	Plastic packaging	2,730.44	353.237
15 01 03	Wooden packaging	6.36	160.44
15 01 04	Metallic packaging		8.26
15 01 05	Composite packaging		
15 01 06	Mixed packaging	6,843.163	3,529.631
15 01 07	Glass packaging	376.03	596.10
16 02 13	Computers	0.86	
17 02 03	Plastic	0.96	11.66
17 05 04	Soil and stones	1.36	
17 08 02	Gypsum-based construction material	0.24	
17 09 04	Mixed C&D wastes	1,185.592	686.02
19 12 04	Plastic & Rubber		226.275
19 12 07	Shredded timber		628.06
19 12 09	Minerals	43.88	186.16
19 12 10	Combustible waste	38.111	
19 12 12	Other wastes (including mixtures of materials) from mechanical treatment of wastes		14,863.80
20 01 01	Paper & cardboard from municipal sources	1,526.059	2,040.41
20 01 02	Glass from municipal sources	260.82	
20 01 08	Biodegradable kitchen and canteen waste	3,411.974	2,998.78
20 01 11	Textile		1.22
20 01 35	WEEE		12.742
20 01 38	Wood waste from municipal sources	1,431.091	594.46
20 01 39	Plastic from municipal sources	79.436	2,163.81
20 01 40	Metals from municipal waste	143.526	143.30
20 02 01	Biodegradable Waste	80.64	17.08
20 03 01	Mixed municipal waste	15,664.795	9,038.65
20 03 03	Street-cleaning residues	1,553.28	1,264.27
20 03 07	Bulky Waste	7,301.508	1,371.60
Total Received		46,717.928	
Total Consigned			46,667.535
Recovery			45,080.745
Disposal			1,586.79
Recovery Rate			96.60%

Table 5.3 Waste Received & Consigned

Year	2014	2013	2012	2011	2010	2009
Total Received	38,532	55,232	54,627	57,592	49,011	48,560
Total Consigned	38,741	54,523	54,532	58,231	48,120	47,574
Total Recovered	36,013	43,092	43,101	44,517	25,706	20,892
Total Disposed	2,727	11,431	11,431	13,075	22,414	26,682
Recovery Rate	93%	79%	79%	76%	53%	44%

6. ENVIRONMENTAL INCIDENTS AND COMPLAINTS

6.1 Incidents

There were occasional breaches of the ELVs for the quality of the foul water discharging from site to the municipal sewer throughout the year. Table 3.11 above provides the detailed information of each of the breaches. Each one was reported to the Agency and Waterford City Council at the time of each incident. Each incident is considered to be an isolated incident and is now closed. The breaches are outlined below:

There were exceedances of the ELV for Total Suspended Solids in March and December 2015. There were exceedances of the ELV for BOD in March, October and December 2015. The ELV for COD was also exceeded in May 2015.

6.2 Register of Complaints

Greenstar maintains a register of complaints received at the facility offices. No complaints were received during the reporting period.

7. ENVIRONMENTAL DEVELOPMENT & CONTROL

7.1 Environmental Management Programme Report

Greenstar have implemented an Integrated Management System (IMS) in accordance with the requirements of Occupational Health and Safety Assessment Series (OHSAS) 18001:2007 and International Standard Organisation (ISO) 14001:2004 in order to manage the Health, Safety and Environmental performance of their business and to control health and safety risk and to minimise their environmental aspects and impacts.

The IMS has been developed for the achievement of continual improvement taking into account the requirements of the Waste Licence Conditions. Greenstar has prepared and effectively implement documented procedures and instructions in accordance with the requirements of both the OHSAS 18001:2007 and ISO 14001:2004. The facility is accredited to both standards and was subject of a successful re-certification audit in July 2014.

The schedule of Objectives and Targets, including their status for 2015 (Table 7.1), as well as the proposed Objectives and Targets for 2016 (Table 7.2) are presented below. An index of procedures used at the facility is included in Appendix 2.

7.1.1 Site Management Structure

Management and Staffing structure: -

Name: Declan O'Reilly
Responsibility: Director of Collections & Transfer
Experience: 13 years waste management experience

Name: Tom Walsh
Responsibility: Operations Manager
Experience: Over 10 years waste management experience; has completed the FÁS waste management course.

Name: Ivan Cummins
Responsibility: Yard Supervisor
Experience: Over 30 years waste management experience.

Name: Robertas Zemaitaitis
Responsibility: General Yard Operative
Experience: Over 5 years waste management experience; has completed the Patel Tonra (CIWM approved) Waste Management Course.

Name: Stephanie Pietercelie
Responsibility: Operations & Environmental
Experience: Over 5 years waste management experience; has completed the Patel Tonra (CIWM approved) Waste Management Course.

7.1.2 *Staff Training*

The following staff training was carried out during the year manual handling, reversing, tachograph training, 360 excavator, loading shovel, forklift and moffett training. In October 2015, Stephanie Pietercelie completed Waste Collection Permit Holder Training held by Environmental Training Solutions. Details on staff training are retained on the company's electronic Training Management System (TMS).

7.2 **Environmental Management Programme**

7.2.1 *Schedule of Objectives 2015*

The objectives achieved during this reporting period are outlined in Table 7.1.

7.2.2 *Schedule of Objectives 2016*

The schedule of targets and objectives for 2016 are presented in Table 7.2.

7.3 **Communications Programme**

Greenstar is committed to setting the standard in waste management and ensuring environmental compliance in all operations. In addition, Greenstar's Environmental, Health & Safety Policy makes a specific commitment to ensure that this policy and environmental records are available to the public and interested parties.

To this end Greenstar has drawn up a Communications Programme, which details how members of the public are facilitated in accessing and viewing environmental information at the facility. Members of the public who wish to inspect these files may do so at any reasonable time by making an appointment with the Operations Manager using the telephone number posted on the main facility entrance sign.

Table 7.1 Objectives and Targets for 2015

No	2015 Objective	Target	Timescale	Responsibility	Status
1	Polypropylene line upgrade	Dust control & Health & Safety (AFE request Tom)	Q1	Site Management / EHS	Completed in Q1
2	Energy Audit	Make site more energy efficient and help reduce the cost of energy bills	Q3	Site Management / EHS	Due in 2016
3	Energy & Resource Consumption	Continue to summarise energy and resource usage on a quarterly basis with a view to reducing consumption	Ongoing	Site Management / EHS	Ongoing
4	Review and Assess the Effectiveness of Nuisance Control Procedures	Continually review and assess all nuisance control procedures to minimise impact on the surrounding area.	Ongoing	Site Management / EHS	Ongoing
5	Pollution Prevention	Strive to ensure that emissions comply with the licence limits and investigate any exceedances of emission limit values.	Ongoing	Site Management / EHS	Ongoing
6	Ensure Impermeable Hardstanding	Maintenance and repair of site surfaces	Q2	Site Management / EHS	Ongoing
7	Wheelie Bin Storage	Building of external enclosed/secured wheelie bin storage	Q1	Site Management / EHS	Completed in Q2
8	Review of Emergency Response Plan	Revision of Plan and additional training for site personnel	Q2	Site Management / EHS	Completed in Q2
9	Document a Preventative Maintenance (PM) plan for inspection and cleaning of plant and equipment wrt fire	Incorporate into existing Site Inspection Database (EF-10A) and site specific PM plans	Q2	Site Management / EHS	On going, site specific PM plans currently under review
10	Document a Preventative Maintenance (PM) plan for inspection of hardstand and drainage infrastructure on site	Incorporate into existing Site Inspection Database (EF-10A)	Q2	Site Management / EHS	Completed

Table 7.2 Schedule of Objective and Targets 2016

No	2016 Objective	Target	Timescale	Responsibility
1	Increase awareness of Odour Management on site group wide	Specify Odour detection in Site Inspection Database (EF-10A) on a daily basis and generate actions as appropriate	Q1-Q2	Site Management/EHS
2	Waste storage practices	Review waste storage practices on each site to ensure that they are in line with licence conditions, fire prevention and insurance recommendations	Q2	Site Management/EHS
3	Emergency response procedures - ER pack update	Review the Emergency Response Pack on each site and ensure that all information & equipment required in case of an emergency is available. Confirm that relevant staff training adequately addresses.	Q2	Site Management/EHS
4	CRAMP, ELRA & Financial Provision	CRAMP, ELRA & Financial Provision to be reviewed	Q2/Q3	EHS team
5	Waste acceptance, classification & records	EWC training for all weighbridge ops. Centralisation of all licences & permits inc NWCPs for hauliers.	Q2/Q3	EHS team

7.4 Report Financial Provision

A Decommissioning Management Plan (DMP) and Environmental Liabilities Risk Assessment (ELRA) including Financial Provision (FP) were submitted to the Agency in 2013 as part of the transfer of the licence which occurred in Q1 2014. Both the DMP and ELRA have been approved by the Agency.

The facility has an Integrated Management System (IMS) in place and the site has achieved external accreditation for its implementation of ISO 14001 and OHSAS 18001, environmental and health and safety management systems. Effective implementation of these systems is the most appropriate way to ensure that mitigation measures achieve the required risk reduction on site.

The IMS serves as a guidance document for facility staff and describes operational control and management practices that are applied at the facility. The IMS is designed to ensure that management of site activities complies with regulatory requirements and best practice. The IMS includes a detailed Emergency Response Procedure which sets out the steps to be taken in the event of an incident at the facility with the potential to cause environmental damage. Greenstar also implements a comprehensive monitoring programme which will highlight any potential environmental incidents with the potential to cause environmental damage.

7.5 Nuisance Controls

Greenstar has contracted a vermin control company to carry out nuisance control at the facility. Prevent a Pest provide pest control at the facility and also provide for the treatment of insects at the facility if necessary. Daily litter picks and road-sweeping are carried out by yard operators during the course of their daily duties. An odour control system is in place at the facility which can be operated automatically or manually by the Environmental Officer and Operations Supervisor as needed. A site inspection is carried out daily and recorded on the facilities inspection log which is controlled as part of the current Integrated Management System.

7.6 Wastewater Volumes

The volume of wastewater generated during the reporting period was estimated to be 1,090m³

8. OTHER REPORTS

8.1 European Pollutant Release and Transfer Register Regulation

Under the European Pollutant Release and Transfer Register Regulation (EC) No. 166/2006 GES are required to submit information annually to the Agency. A copy of the return submitted to the Agency via the web-based data reporting system is in Appendix 1.

APPENDIX 1

European Pollutant Release and Transfer Register



Environmental Protection Agency

| PRTR# : W0177 | Facility Name : Starrus Eco Holdings Limited (Waterford City) |
 Filename : W0177_2015.xls | Return Year : 2015 |

[Guidance to completing the PRTR workbook](#)

PRTR Returns Workbook

Version 1.1.19

REFERENCE YEAR	2015
-----------------------	------

1. FACILITY IDENTIFICATION

Parent Company Name	Starrus Eco Holdings Limited
Facility Name	Starrus Eco Holdings Limited (Waterford City)
PRTR Identification Number	W0177
Licence Number	W0177-03

Classes of Activity

No.	class name
-	Refer to PRTR class activities below

Address 1	Carrignard
Address 2	Six Cross Roads
Address 3	Business Park
Address 4	Waterford City
	Waterford
Country	Ireland
Coordinates of Location	-7.14684 52.2345
River Basin District	IESE
NACE Code	3821
Main Economic Activity	Treatment and disposal of non-hazardous waste
AER Returns Contact Name	Malcolm Dowling
AER Returns Contact Email Address	malcolm.dowling@greenstar.ie
AER Returns Contact Position	Group Compliance Manager
AER Returns Contact Telephone Number	012947976
AER Returns Contact Mobile Phone Number	
AER Returns Contact Fax Number	
Production Volume	0.0
Production Volume Units	
Number of Installations	0
Number of Operating Hours in Year	0
Number of Employees	0
User Feedback/Comments	
Web Address	

2. PRTR CLASS ACTIVITIES

Activity Number	Activity Name
5(c)	Installations for the disposal of non-hazardous waste
5(c)	Installations for the disposal of non-hazardous waste
50.1	General

3. SOLVENTS REGULATIONS (S.I. No. 543 of 2002)

Is it applicable?	
Have you been granted an exemption ?	
If applicable which activity class applies (as per Schedule 2 of the regulations) ?	
Is the reduction scheme compliance route being used ?	

4. WASTE IMPORTED/ACCEPTED ONTO SITE

[Guidance on waste imported/accepted onto site](#)

Do you import/accept waste onto your site for on-site treatment (either recovery or disposal activities) ?	
--	--

4.1 RELEASES TO AIR

[Link to previous years emissions data](#)

| PRTR# : W0177 | Facility Name : Starrus Eco Holdings Limited (Waterford City) | Filename : W0177_2015.xls | Return Year : 2015 |

29/03/2016 12:02

SECTION A : SECTOR SPECIFIC PRTR POLLUTANTS

POLLUTANT		RELEASERS TO AIR			Please enter all quantities in this section in KGs			
No. Annex II	Name	M/C/E	METHOD		Emission Point 1	QUANTITY		
			Method Code	Designation or Description		T (Total) KG/Year	A (Accidental) KG/Year	F (Fugitive) KG/Year
						0.0	0.0	0.0

* Select a row by double-clicking on the Pollutant Name (Column B) then click the delete button

SECTION B : REMAINING PRTR POLLUTANTS

POLLUTANT		RELEASERS TO AIR			Please enter all quantities in this section in KGs			
No. Annex II	Name	M/C/E	METHOD		Emission Point 1	QUANTITY		
			Method Code	Designation or Description		T (Total) KG/Year	A (Accidental) KG/Year	F (Fugitive) KG/Year
						0.0	0.0	0.0

* Select a row by double-clicking on the Pollutant Name (Column B) then click the delete button

SECTION C : REMAINING POLLUTANT EMISSIONS (As required in your Licence)

POLLUTANT		RELEASERS TO AIR			Please enter all quantities in this section in KGs			
Pollutant No.	Name	M/C/E	METHOD		Emission Point 1	QUANTITY		
			Method Code	Designation or Description		T (Total) KG/Year	A (Accidental) KG/Year	F (Fugitive) KG/Year
						0.0	0.0	0.0

* Select a row by double-clicking on the Pollutant Name (Column B) then click the delete button

Additional Data Requested from Landfill operators

For the purposes of the National Inventory on Greenhouse Gases, landfill operators are requested to provide summary data on landfill gas (Methane) flared or utilised on their facilities to accompany the figures for total methane generated. Operators should only report their Net methane (CH4) emission to the environment under T(total) KG/yr for Section A: Sector specific PRTR pollutants above. Please complete the table below:

Landfill:

Starrus Eco Holdings Limited (Waterford City)

Please enter summary data on the quantities of methane flared and / or utilised

T (Total) kg/Year	M/C/E	Method Used		Facility Total Capacity m3 per hour
		Method Code	Designation or Description	
Total estimated methane generation (as per site model)	0.0			N/A
Methane flared	0.0			0.0 (Total Flaring Capacity)
Methane utilised in engine/s	0.0			0.0 (Total Utilising Capacity)
Net methane emission (as reported in Section A above)	0.0			N/A

4.2 RELEASES TO WATERS

[Link to previous years emissions data](#)

| PRTR# : W0177 | Facility Name : Starrus Eco Holdings Limited (Waterford City) | Filename : W0177_2015.xls | Return Year : 2015 |

29/03/2016 12:02

SECTION A : SECTOR SPECIFIC PRTR POLLUTANTS

Data on ambient monitoring of storm/surface water or groundwater, conducted as part of your licence requirements, should NOT be submitted under AER / PRTR Reporting as t

RELEASES TO WATERS					Please enter all quantities in this section in KGs			
POLLUTANT		M/C/E	Method Used		QUANTITY			
No. Annex II	Name		Method Code	Designation or Description	Emission Point 1	T (Total) KG/Year	A (Accidental) KG/Year	F (Fugitive) KG/Year
					0.0	0.0	0.0	0.0

* Select a row by double-clicking on the Pollutant Name (Column B) then click the delete button

SECTION B : REMAINING PRTR POLLUTANTS

RELEASES TO WATERS					Please enter all quantities in this section in KGs			
POLLUTANT		M/C/E	Method Used		QUANTITY			
No. Annex II	Name		Method Code	Designation or Description	Emission Point 1	T (Total) KG/Year	A (Accidental) KG/Year	F (Fugitive) KG/Year
					0.0	0.0	0.0	0.0

* Select a row by double-clicking on the Pollutant Name (Column B) then click the delete button

SECTION C : REMAINING POLLUTANT EMISSIONS (as required in your Licence)

RELEASES TO WATERS					Please enter all quantities in this section in KGs			
POLLUTANT		M/C/E	Method Used		QUANTITY			
Pollutant No.	Name		Method Code	Designation or Description	Emission Point 1	T (Total) KG/Year	A (Accidental) KG/Year	F (Fugitive) KG/Year
					0.0	0.0	0.0	0.0

* Select a row by double-clicking on the Pollutant Name (Column B) then click the delete button

4.3 RELEASES TO WASTEWATER OR SEWER

[Link to previous years emissions data](#)

| PRTR# : W0177 | Facility Name : Starrus Eco Holdings Limited (Waterford City) | Filename : 29/03/2016 12:02

SECTION A : PRTR POLLUTANTS

OFFSITE TRANSFER OF POLLUTANTS DESTINED FOR WASTE-WATER TREATMENT OR SEWER					Please enter all quantities in this section in KGs			
POLLUTANT		METHOD			QUANTITY			
No. Annex II	Name	M/C/E	Method Code	Designation or Description	Emission Point 1	T (Total) KG/Year	A (Accidental) KG/Year	F (Fugitive) KG/Year
					0.0	0.0	0.0	0.0

* Select a row by double-clicking on the Pollutant Name (Column B) then click the delete button

SECTION B : REMAINING POLLUTANT EMISSIONS (as required in your Licence)

OFFSITE TRANSFER OF POLLUTANTS DESTINED FOR WASTE-WATER TREATMENT OR SEWER					Please enter all quantities in this section in KGs					
POLLUTANT		METHOD			QUANTITY					
Pollutant No.	Name	M/C/E	Method Used		SE-1			T (Total) KG/Year	A (Accidental) KG/Year	F (Fugitive) KG/Year
			Method Code	Designation or Description	Emission Point 1	Emission Point 2	Emission Point 3			
303	BOD	C	PER	Calculated based on annual flow rate. Analysis is ISO accredited.	393.49	0.0	0.0	393.49	0.0	0.0
306	COD	C	PER	Calculated based on annual flow rate. Analysis is ISO accredited.	884.535	0.0	0.0	884.535	0.0	0.0
314	Fats, Oils and Greases	C	PER	Calculated based on annual flow rate. Analysis is ISO accredited.	1.199	0.0	0.0	1.199	0.0	0.0
308	Detergents (as MBAS)	C	PER	Calculated based on annual flow rate. Analysis is ISO accredited.	2.2563	0.0	0.0	2.2563	0.0	0.0
240	Suspended Solids	C	PER	Calculated based on annual flow rate. Analysis is ISO accredited.	243.615	0.0	0.0	243.615	0.0	0.0

* Select a row by double-clicking on the Pollutant Name (Column B) then click the delete button

4.4 RELEASES TO LAND

[Link to previous years emissions data](#)

| PRTR# : W0177 | Facility Name : Starrus Eco Holdings Limited (Waterford City) | Filename : W0177_2015.xls | Return Year : 2015 |

29/03/2016 12:02

SECTION A : PRTR POLLUTANTS

POLLUTANT		RELEASERS TO LAND			Please enter all quantities in this section in KGs		
POLLUTANT		METHOD			QUANTITY		
No. Annex II	Name	M/C/E	Method Code	Designation or Description	Emission Point 1	T (Total) KG/Year	A (Accidental) KG/Year
					0.0	0.0	0.0

* Select a row by double-clicking on the Pollutant Name (Column B) then click the delete button

SECTION B : REMAINING POLLUTANT EMISSIONS (as required in your Licence)

POLLUTANT		RELEASERS TO LAND			Please enter all quantities in this section in KGs		
POLLUTANT		METHOD			QUANTITY		
Pollutant No.	Name	M/C/E	Method Code	Designation or Description	Emission Point 1	T (Total) KG/Year	A (Accidental) KG/Year
					0.0	0.0	0.0

* Select a row by double-clicking on the Pollutant Name (Column B) then click the delete button

5. ONSITE TREATMENT & OFFSITE TRANSFERS OF WASTE

| PRTR# : W0177 | Facility Name : Starrus Eco Holdings Limited (Waterford City) | Filename : W0177_2015.xls | Return Year : 2015 |

29/03/2016 12:03

Please enter all quantities on this sheet in Tonnes

Transfer Destination	European Waste Code	Hazardous	Quantity (Tonnes per Year)	Description of Waste	Waste Treatment Operation	Method Used		Location of Treatment	Haz Waste : Name and Licence/Permit No of Next Destination Facility Non-Haz Waste : Name and Licence/Permit No of Recoverer/Disposer	Haz Waste : Address of Next Destination Facility Non-Haz Waste : Address of Recoverer/Disposer	Name and License / Permit No. and Address of Final Recoverer / Disposer (HAZARDOUS WASTE ONLY)	Actual Address of Final Destination i.e. Final Recovery / Disposal Site (HAZARDOUS WASTE ONLY)
						M/C/E	Method Used					
Within the Country	12 01 02	No	14.22	ferrous metal dust and particles	R4	M	Weighed	Offsite in Ireland	Cork Metal Company,WFP-CK-10-0067-01	Dublin Hill,Cork,....Ireland		
To Other Countries	15 01 01	No	314.36	paper and cardboard packaging	R3	M	Weighed	Abroad	MLM (ACN Europe) Ltd ,TFS Broker IRE/G022/11,United Kingdom		
Within the Country	15 01 01	No	255.94	paper and cardboard packaging	R3	M	Weighed	Offsite in Ireland	Mark Lydon Enterprises Ltd,IRE/G021/12,Ireland		
To Other Countries	15 01 01	No	625.24	paper and cardboard packaging	R3	M	Weighed	Abroad	Peute Papier Recycling BV,IRE/G006/08	Veeplaat 40,3313 LJ Dordrecht,....,Netherlands		
To Other Countries	15 01 01	No	4561.81	paper and cardboard packaging	R3	M	Weighed	Abroad	Saica natur Uk Ltd,IRE/G277/15,United Kingdom		
To Other Countries	15 01 02	No	23.12	plastic packaging	R3	M	Weighed	Abroad	Greentech Plastics Ltd,WFP-LK-2013-164	Castletroy ,Limerick,....,Ireland		
To Other Countries	15 01 02	No	8.22	plastic packaging	R3	M	Weighed	Abroad	Choice Waste Management,IRE/AG050/11	Denmark House,Brick Close Kiln Farm,Milton Keynes Buckinghamshire,MK11 3DP,United Kingdom Clermont Business Park,Haggardstown,Dundalk, Co. Louth,Ireland		
Within the Country	15 01 02	No	191.617	plastic packaging	R13	M	Weighed	Offsite in Ireland	Leinster Environmentals,WP 2008/06			
To Other Countries	15 01 02	No	14.12	plastic packaging	R3	M	Weighed	Abroad	MLM (ACN Europe) Ltd ,TFS Broker IRE/G022/11,United Kingdom The Kipper House,Scilly,Kinsale,Co. Cork,Ireland		
Within the Country	15 01 02	No	18.64	plastic packaging	R3	M	Weighed	Offsite in Ireland	Materia Environmental Ltd.,IRE/AG161/11			
To Other Countries	15 01 02	No	97.52	plastic packaging	R3	M	Weighed	Abroad	Peute Papier Recycling BV,IRE/G006/08	Veeplaat 40,3313 LJ Dordrecht,....,Netherlands		
Within the Country	15 01 03	No	124.2	wooden packaging	R13	M	Weighed	Offsite in Ireland	Clonmel Waste Disposal Ltd ,WP-008-02	Lawlesstown ,Clonmel ,Co Tipperary ,Ireland Millennium Business Park,Grange,Ballycoolin,Dubl in 11 ,Ireland		
Within the Country	15 01 03	No	36.24	wooden packaging	R13	M	Weighed	Offsite in Ireland	Greenstar Limited,W0183-01			
Within the Country	15 01 04	No	8.26	metallic packaging	R4	M	Weighed	Offsite in Ireland	Molloy Metals,WP08/14b	Ballycarney,Enniscomrthy,Co. Wexford,....,Ireland		
Within the Country	15 01 06	No	1137.72	mixed packaging	R13	M	Weighed	Offsite in Ireland	Killarney Waste Disposal ,W0217-01	Aughacurreen,Killarney ,Co. Kerry,....,Ireland		
Within the Country	15 01 06	No	2180.431	mixed packaging	R13	M	Weighed	Offsite in Ireland	Quality Recycling Ltd.,WFP-TS-08-0079-01	Ballylynch,Carrick-on-Suir,Co. Tipperary,....,Ireland		
Within the Country	15 01 06	No	211.48	mixed packaging	R13	M	Weighed	Offsite in Ireland	Starrus Eco Holdings Ltd,W0053-03	Fassaroe,Bray,Co. Wicklow,....,Ireland		
Within the Country	15 01 07	No	582.7	glass packaging	R13	M	Weighed	Offsite in Ireland	Clonmel Waste Disposal Ltd ,WP-008-02	Lawlesstown ,Clonmel ,Co Tipperary ,Ireland		
Within the Country	15 01 07	No	13.4	glass packaging	R5	M	Weighed	Offsite in Ireland	Gannon Eco,WFP-WM-2009-0007-01	Ballinagore,Co. Westmeath,....,Ireland		
Within the Country	17 09 04	No	686.02	09 02 and 17 09 03 mixed construction and demolition wastes other than those mentioned in 17 09 01, 17	R13	M	Weighed	Offsite in Ireland	CHI Environmental Ltd ,WMP 023/2007	Grannagh ,Kilmacow ,Co Kilkenny ,Ireland		
Within the Country	19 12 04	No	19.23	plastic and rubber	R3	M	Weighed	Offsite in Ireland	Agnail ,TFS Broker IRE/AG117/11,Ballycoolin,Dublin,Ireland		
Within the Country	19 12 04	No	43.065	plastic and rubber	R3	M	Weighed	Offsite in Ireland	Greentech Plastics Ltd,WFP-LK-2013-164	Castletroy ,Limerick,....,Ireland		
Within the Country	19 12 07	No	628.06	wood other than that mentioned in 19 12 06 other wastes (including mixtures of materials) from mechanical treatment of	R13	M	Weighed	Offsite in Ireland	Clonmel Waste Disposal Ltd ,WP-008-02	Lawlesstown ,Clonmel ,Co Tipperary ,Ireland		
Within the Country	19 12 12	No	40.4	11 wastes other than those mentioned in 19 12	D5	M	Weighed	Offsite in Ireland	Ballynagran Landfill limited,W0165-02	Ballynagran,Coolbeg & Kilcandra,Co. Wicklow,....,Ireland		

Transfer Destination	European Waste Code	Hazardous	Quantity (Tonnes per Year)	Description of Waste	Waste Treatment Operation	Method Used		Location of Treatment	Haz Waste : Name and Licence/Permit No of Next Destination Facility	Haz Waste : Address of Next Destination Facility	Name and License / Permit No. and Address of Final Recoverer / Disposer (HAZARDOUS WASTE ONLY)	Actual Address of Final Destination i.e. Final Recovery / Disposal Site (HAZARDOUS WASTE ONLY)
						M/C/E	Method Used		Haz Waste: Name and Licence/Permit No of Recoverer/Disposer	Non Haz Waste: Address of Recoverer/Disposer		
Within the Country	19 12 12	No	48.24	11 other wastes (including mixtures of materials) from mechanical treatment of wastes other than those mentioned in 19 12	R13	M	Weighed	Offsite in Ireland	Greenstar Ltd,W0136-03	Sarsfieldcourt Industrial Estate,Glanmire,Co. Cork,,Ireland		
Within the Country	19 12 12	No	3419.25	11 other wastes (including mixtures of materials) from mechanical treatment of wastes other than those mentioned in 19 12	R13	M	Weighed	Offsite in Ireland	Oxigen Environmental Ltd.,W0152-03	Robinhood Industrial Estate,Robinhood Road,Ballymount,Dublin 22,Ireland		
Within the Country	19 12 12	No	7733.51	11 other wastes (including mixtures of materials) from mechanical treatment of wastes other than those mentioned in 19 12	R13	M	Weighed	Offsite in Ireland	Starrus Eco Holdings Ltd,W0053-03	Fassaroe,Bray,Co. Wicklow,,Ireland		
Within the Country	19 12 12	No	3622.4	11 other wastes (including mixtures of materials) from mechanical treatment of wastes other than those mentioned in 19 12	R13	M	Weighed	Offsite in Ireland	Starrus Eco Holdings Ltd,W0116-02	Six Cross Roads Business Park,Carriganard,Butlerstown,Waterford,Ireland		
Within the Country	20 01 01	No	198.5	paper and cardboard	R3	M	Weighed	Offsite in Ireland	Shred It Ireland,.,Ireland		
Within the Country	20 01 01	No	108.9	paper and cardboard	R13	M	Weighed	Offsite in Ireland	Greenstar Limited,W0183-01	Millennium Business Park,Grange,Ballycoolin,Dubl in 11,Ireland		
To Other Countries	20 01 01	No	397.34	paper and cardboard	R3	M	Weighed	Abroad	MLM (ACN Europe) Ltd ,TFS Broker IRE/G022/11,United Kingdom		
Within the Country	20 01 01	No	49.12	paper and cardboard	R13	M	Weighed	Offsite in Ireland	Mark Lydon Enterprises Ltd,IRE/G021/12,Ireland		
To Other Countries	20 01 01	No	1286.55	paper and cardboard	R3	M	Weighed	Abroad	Peute Papier Recycling BV,IRE/G006/08	Veeplaat 40,3313 LJ Dordrecht,....,Netherlands		
Within the Country	20 01 08	No	2854.36	biodegradable kitchen and canteen waste	R3	M	Weighed	Offsite in Ireland	Molloy Waste Services to Clonmel Waste Disposal Ltd ,WP-008-02	Lawlesstown , Clonmel ,Co Tipperary ,Ireland		
Within the Country	20 01 11	No	1.22	textiles	R13	M	Weighed	Offsite in Ireland	Textile Recycling Ltd ,Licence exempt	Glen Abbey Complex ,Belgard ,Tallaght , Dublin 24 ,ireland		
Within the Country	20 01 35	Yes	12.742	discarded electrical and electronic equipment other than those mentioned in 20 01 21 and 20 01 23 containing hazardous components	R4	M	Weighed	Offsite in Ireland	KMK Metals Recyclin LTD,W0113-04	Tullamore,Co. Offaly,....,Ireland	KMK Metals Recycling Ltd,w0113-04,Tullamore,Co Offaly,....,ireland,ireland
Within the Country	20 01 38	No	351.32	wood other than that mentioned in 20 01 37	R3	M	Weighed	Offsite in Ireland	Clonmel Waste Disposal Ltd ,WP-008-02	Lawlesstown ,Clonmel ,Co Tipperary ,Ireland		
Within the Country	20 01 38	No	243.14	wood other than that mentioned in 20 01 37	R3	M	Weighed	Offsite in Ireland	Ormonde Organics Ltd,WFP-WD-10-0003-01	Killowen,Portlaw,Co. Waterford,,Ireland		
Within the Country	20 01 39	No	778.28	plastics	R13	M	Weighed	Offsite in Ireland	Agnail ,TFS Broker IRE/AG117/11,Ballycoolin,Dublin,Ireland		
To Other Countries	20 01 39	No	165.6	plastics	R13	M	Weighed	Abroad	Choice Waste Management,IRE/AG050/11	Denmark House,Brick Close Kiln Farm,Milton Keynes Buckinghamshire,MK11 3DP,United Kingdom		
To Other Countries	20 01 39	No	231.78	plastics	R13	M	Weighed	Abroad	Boost Recycling Limited,IRE/G082/11,United Kingdom		
Within the Country	20 01 39	No	182.9	plastics	R13	M	Weighed	Offsite in Ireland	Greentech Plastics Ltd,WFP-LK-2013-164	Castletroy ,Limerick,....,Ireland		
Within the Country	20 01 39	No	148.55	plastics	R13	M	Weighed	Offsite in Ireland	Leinster Environmentals,WP 2008/06	Clermont Business Park,Haggardstown,Dundalk, Co. Louth,Ireland		
Within the Country	20 01 39	No	476.9	plastics	R3	M	Weighed	Offsite in Ireland	Materia Environmental Ltd.,IRE/AG161/11	House,Scilly,Kinsale,Co. Cork,Ireland		
To Other Countries	20 01 39	No	179.8	plastics	R3	M	Weighed	Abroad	Ckn Holdings,IRE/G415/16,United Kingdom		

Transfer Destination	European Waste Code	Hazardous	Quantity (Tonnes per Year)	Description of Waste	Waste Treatment Operation	Method Used		Location of Treatment	Haz Waste : Name and Licence/Permit No of Next Destination Facility	Haz Waste : Name and Licence/Permit No of Recover/Disposer	Haz Waste : Address of Next Destination Facility	Name and License / Permit No. and Address of Final Recoverer / Disposer (HAZARDOUS WASTE ONLY)	Actual Address of Final Destination i.e. Final Recovery / Disposal Site (HAZARDOUS WASTE ONLY)
						M/C/E	Method Used		Non	Non Haz Waste: Address of Recover/Disposer	Address of Final Recoverer / Disposer (HAZARDOUS WASTE ONLY)		
Within the Country	20 01 40	No	26.76	metals	R4	M	Weighed	Offsite in Ireland	Davis Recycling Ltd,W0134-01		10 The Anchorage Business Park,Charlotte Quay,Dublin 4,..Ireland		
Within the Country	20 01 40	No	7.04	metals	R4	M	Weighed	Offsite in Ireland	Cork Metal Company,WFP-CK-10-0067-01		Dublin Hill,Cork,..Ireland		
Within the Country	20 01 40	No	76.0	metals	R4	M	Weighed	Offsite in Ireland	Clearcircle Metals,WCP-LK-08-589-01		Road,Limerick,..Ireland		
Within the Country	20 01 40	No	27.68	metals	R4	M	Weighed	Offsite in Ireland	Multimetals Recycling Ltd,WFP-WW-13-0014-03		Murrough Industrial Estate,Bollarney,Wicklow,Co Wicklow,Ireland		
Within the Country	20 01 40	No	5.82	metals	R4	M	Weighed	Offsite in Ireland	Molloy Metals,WP08/14b		Ballycarney,Enniscorthy,Co. Wexford,..Ireland		
Within the Country	20 02 01	No	17.08	biodegradable waste	R3	M	Weighed	Offsite in Ireland	Clonmel Waste Disposal Ltd ,WP-008-02		Lawlesstown ,Clonmel ,Co Tipperary ..,ireland		
Within the Country	20 03 01	No	23.06	mixed municipal waste	D5	M	Weighed	Offsite in Ireland	Bord Na Mona,W0201-01		Drehid Landfill,Drehid ,Naas,Co. Kildare,Ireland		
Within the Country	20 03 01	No	7364.68	mixed municipal waste	R13	M	Weighed	Offsite in Ireland	Glanway Ltd,WFP-KK-14-0002-01		Belview Port,Co. Kilkenny,..Ireland		
Within the Country	20 03 01	No	7.68	mixed municipal waste	D5	M	Weighed	Offsite in Ireland	Powerstown Landfill Site,W0025-04		Kilkenny Road,Carlow,Co. Carlow,..Ireland		
Within the Country	20 03 01	No	101.02	mixed municipal waste	R13	M	Weighed	Offsite in Ireland	Starrus Eco Holdings Ltd,W0116-02		Six Cross Roads Business Park,Carriganard,Butlerstown,Waterford,Ireland		
Within the Country	20 03 03	No	32.76	street-cleaning residues	D5	M	Weighed	Offsite in Ireland	Bord Na Mona,W0201-01		Drehid Landfill,Drehid ,Naas,Co. Kildare,Ireland		
Within the Country	20 03 03	No	292.26	street-cleaning residues	D5	M	Weighed	Offsite in Ireland	Knockharley Landfill,W0146-02		Knockharley ,Navan,Co. Meath,..Ireland		
Within the Country	20 03 03	No	939.25	street-cleaning residues	R13	M	Weighed	Offsite in Ireland	Starrus Eco Holdings Ltd,W0053-03		Fassaroe,Bray,Co. Wicklow,..Ireland		
Within the Country	20 03 07	No	1371.6	bulky waste	R13	M	Weighed	Offsite in Ireland	Starrus Eco Holdings Ltd,W0053-03		Fassaroe,Bray,Co. Wicklow,..Ireland		
Within the Country	17 02 03	No	11.66	plastic	R13	M	Weighed	Offsite in Ireland	Leinster Environmentals,WP 2008/06		Clermont Business Park,Haggardstown,Dundalk,Co. Louth,Ireland		
To Other Countries	19 12 04	No	163.98	plastic and rubber	R13	M	Weighed	Abroad	Recycling,IRE/AG121/15	Scotland,United Kingdom		
Within the Country	19 12 09	No	186.16	minerals (for example sand, stones)	R13	M	Weighed	Offsite in Ireland	CHI Environmental Ltd ,WMP 023/2007		Grannagh ,Kilmacow ,Co Kilkenny ..,ireland		
Within the Country	20 01 08	No	144.42	biodegradable kitchen and canteen waste	R3	M	Weighed	Offsite in Ireland	Ormonde Organics Ltd,WFP-WD-10-0003-01		Killowen,Portlaw,Co. Waterford,..Ireland		
Within the Country	20 03 01	No	63.6	mixed municipal waste	R3	M	Weighed	Offsite in Ireland	Killarney Waste Disposal ,W0217-01		Aughacurreen,Killarney ,Co. Kerry,..Ireland		
Within the Country	20 03 01	No	1190.63	mixed municipal waste	D5	M	Weighed	Offsite in Ireland	Knockharley Landfill,W0146-02		Knockharley ,Navan,Co. Meath,..Ireland		
Within the Country	20 03 01	No	36.58	mixed municipal waste	R3	M	Weighed	Offsite in Ireland	Quality Recycling Ltd.,WFP-TS-08-0079-01		Ballylynch,Carrick-on-Suir,Co. Tipperary,..Ireland		
Within the Country	20 03 01	No	21.06	mixed municipal waste	R13	M	Weighed	Offsite in Ireland	Starrus Eco Holdings Ltd,W0053-03		Fassaroe,Bray,Co. Wicklow,..Ireland		
Within the Country	20 03 01	No	230.34	mixed municipal waste	R13	M	Weighed	Offsite in Ireland	Greenstar Ltd,W0136-03		Sarsfieldcourt Industrial Estate,Glanmire,Co. Cork,..Ireland		

* Select a row by double-clicking the Description of Waste then click the delete button

APPENDIX 2

Procedures List

Doc. No.: Control	Revision No.: As Shown	Issue Date: As Shown
Approved By:	Malcolm Dowling – Group Compliance Manager	Page 3 of 34

Integrated Procedures - IP

IP-01	Document & Record Control Procedure	Rev 01, 28/04/14
IP-02	Health & Safety Risk Assessment Procedure	Rev 01, 28/04/14
IP-03	Environmental Aspects & Impacts Procedure	Rev 01, 28/04/14
IP-04	Legal & Regulatory Requirements Procedure	Rev 01, 28/04/14
IP-05	Objectives, Targets & Management Programmes Procedure	Rev 01, 28/04/14
IP-06	Competence, Training & Awareness Procedure	Rev 01, 28/04/14
IP-07	Communication & Consultation Procedure	Rev 01, 28/04/14
IP-08	Monitoring, Measurement & Improvement Procedure	Rev 01, 28/04/14
IP-09	Evaluation of Compliance Procedure	Rev 01, 28/04/14
IP-10	Non Conformances, Corrective/Preventive Actions Procedure	Rev 01, 28/04/14
IP-11	Internal Audit Procedure	Rev 01, 28/04/14
IP-12	Management Review Procedure	Rev 01, 28/04/14
IP-13	Control of Contractors/Visitors Procedure	Rev 01, 28/04/14
IP-14	Health & Safety & Environmental Monitoring	Rev 01, 28/04/14
IP-15	Emergency Preparedness & Response Procedure	Rev 01, 28/04/14
IP-16	Fire Prevention Procedure	Rev 01, 28/04/14
IP-17	Bin Washing Procedure	Rev 01, 28/04/14

Safety Procedures - SP

SP-01	Permit to Work Procedure	Rev 01, 28/04/14
SP-02	Maintenance & Calibration Procedure	Rev 01, 28/04/14
SP-03	Mobile Plant Procedure	Rev 01, 28/04/14
SP-04	Fork Truck Procedure	Rev 01, 28/04/14
SP-05	Operation of Fixed Plant Procedure	Rev 01, 28/04/14
SP-06	Lock Out / Tag Out Procedure	Rev 01, 28/04/14
SP-07	Health & Safety Notification Procedure	Rev 01, 28/04/14
SP-08	MSW Shredder routine Maintenance & Clearing of Blockages Procedure (SCGT)	Rev 01, 28/04/14
SP-09	Weighbridge & Tipping Procedure (SCGT)	Rev 01, 28/04/14
SP-10	Cleaning of Washing Bay (Greenogue)	Rev 01, 28/04/14



Doc. No.: Control	Revision No.: As Shown	Issue Date: As Shown
Approved By:	Malcolm Dowling – <i>Group Compliance Manager</i>	Page 4 of 34

Environmental Procedures - EP

EP-01	Office Waste & Energy Management Procedure	Rev 01, 28/04/14
EP-02	Decommissioning and Aftercare Procedure	Rev 01, 28/04/14
EP-03	Environment Communications Procedure	Rev 01, 28/04/14
EP-04	Waste Permits & Licences Procedure	Rev 01, 28/04/14
EP-05	Waste Acceptance Procedure	Rev 01, 28/04/14
EP-06	Unacceptable Waste Procedure	Rev 01, 28/04/14
EP-07	Waste & Material Storage Procedure	Rev 01, 28/04/14
EP-08	Waste Processing Procedure	Rev 01, 28/04/14
EP-09	Site Infrastructure Procedure	Rev 02, 06/05/15
EP-10	Nuisance Management Procedure (Site Specific)	(Site Specific) Rev 01, 28/04/14
EP-11	Civic Amenity Site Procedure	Rev 01, 28/04/14

Doc. No.: Control	Revision No.: As Shown	Issue Date: As Shown
Approved By:	Malcolm Dowling – Group Compliance Manager	Page 5 of 34

Amendment History

Date	Amendment No.	Procedure No:	Revision No:	Comment	Authorised By
05.07.10	01	All	01	Initial Issue	M.D & O.C
13.09.10	02	EP-03	02	Issue of Incident Reports	M.D
20.09.10	03	IP-10	02	Env issues not logged on WIMS Database	M.D
29.10.10	04	IP-13	02	Use of M&M equipment by contractors	M.D & O.C
29.10.10	05	IP-14	02	Use of M&M equipment by contractors	M.D & O.C
29.10.10	06	SP-02	02	Inclusion of Maintenance Schedule	M.D & O.C
05.11.10	07	IP-04	02	Inclusion of other requirements	S.B & O.C
01.02.11	08	SP-08	01	Inclusion of new procedure	O.C
01.02.11	09	IP-10	03	Inclusion of SP-08	O.C
01.02.11	10	IP-15	02	Removal of SF-022	O.C
01.02.11	11	Contents	As shown	EP-10 Site Specific	M.D & O.C
01.02.11	12	IP-06	02	Addressing Agency Staff needs	M.D & O.C
01.02.11	13	Circ List	02	Amendment to document control	M.D & O.C
04.04.11	14	SP-02	03	Inclusion of Site Specific Maintenance schedules	O.C
07.06.11	15	IP-11	02	Inclusion of H&S & Env Internal Audit Schedules	M.D & O.C
14/09/11	16	EP-02	02	Inclusion of decommissioning of plant/equipment	S.B
15/09/11	17	IP-09	02	Inclusion of Statutory Inspections	O.C
01/12/11	18	SP-09	01	Inclusion of new procedure for SCGT	O.C
01/12/11	19	SP-10	01	Inclusion of new procedure for SCGT	O.C
03/05/12	20	SP-01	02	Amendment to remove SF 028	O.C
05/05/12	21	SP-11	01	Inclusion of a new procedure for Greenogue	O.C
28/05/12	22	IP-11	03	General Amendments to internal audit procedure	M.D & O.C
08/06/12	23	IP-13	03	Grammatical amendment	M.D & O.C
15/04/13	24	IP-06	03	Agency staff – sign-off record sufficient proof of training. TMS optional	M.D & O.C

Doc. No.: Control	Revision No.: As Shown	Issue Date: As Shown
Approved By:	Malcolm Dowling – Group Compliance Manager	Page 6 of 34

Date	Amendment No.	Procedure No:	Revision No:	Comment	Authorised By
30/06/13	25	IP-16	01	Inclusion of new procedure	M.D.
09/09/13	26	IP-03	02	Use of Scannell Software Solutions (EnviroManager) instead of IF-03A	M.D & O.C
09/09/13	27	IP-04	30	Use of Scannell Software Solutions (EnviroManager) instead of IF-03A	M.D & O.C
09/09/13	28	IP-05	02	Use of Scannell Software Solutions (EnviroManager) instead of IF-03A	M.D & O.C
16/10/13	29	EP-03	03	Introduction of EPA ALDER Portal	K.B
28/04/14	30	All EP's & IP's	01	Change of Company name and review of all Integrated and Env procedures	M.D & O.C
28/04/14	31	SP's	01	Change of Company name and review of all safety procedures including re-numbering & deletion of Motor Claim Notification Procedure – SP 08	O.C
06/05/15	32	EP-09	02	Ref to new form EF-11 added	SS



Doc. No.: Control	Revision No.: 01	Issue Date: 28 th April 2014
Approved By:	Malcolm Dowling – Group Compliance Manager	Page 7 of 34

Circulation List

The Integrated Procedures Manual is a controlled document. Copies of the Procedures Manual are available as follows;

Copy Number	Holder
1 (Master Copy)	Group H&S Manager
2	Greenstar EnviroManager
3	Greenstar Intranet – Electronic Copy