

 **Panda**
An Animal for Recycling

Site: Cappagh Road, Finglas, Dublin 11

Waste Licence Number W0261-02

Annual Environmental Report

01st January 2015 – 31st December 2015

Table of Contents

Table of Contents	2
1. Introduction.....	4
1.1 Company details.....	4
1.2 Management Structure	4
1.3 Financial Provision	5
1.4 Environmental Policy.....	5
1.5 Activities	6
1.6 Waste Activities carried out at the Facility.....	6
1.7 Water Usage:.....	7
2. Summary Information.....	7
2.1 Waste Received.....	7
2.2 Waste acceptance and dispatch summary	8
2.3 Waste Recovery Reports.....	8
2.4 Summary report on emissions and interpretation of environmental monitoring	9
2.4.1 <i>Surface Water</i>	9
2.4.2 <i>Dust Emissions</i>	10
2.4.3 <i>Noise Emissions</i>	11
2.4.5 <i>Bund, pipe and underground storage tanks integrity</i>	12
2.4.6 <i>Summary of resource and energy consumption</i>	12
2.4.7 <i>Water</i>	12
2.5 Site infrastructure.....	12
2.5.1 <i>In-place</i>	12
2.5.2 <i>Planned Infra-structure</i>	13
2.6 Progress Report on Proposals Developed to Minimise Water Demand & Trade Effluent Discharge	13
2.7 PRTR Emission.....	13
3. Environmental objectives and targets – 2015 and 2016.	14
3.1 Summary of reported incidents and complaints.....	16
3.1.1 <i>Reported Incidents Summary</i>	16
3.1.2 <i>Complaints:</i>	16
3.2 Review of nuisance controls	16
3.2.1 <i>Odour</i>	16
3.2.2 <i>Noise</i>	17

3.2.3 *Dust* 17

3.2.4 *Vermin*..... 17

3.2.5 *Flies*..... 17

3.2.6 *Birds*..... 17

3.2.7 *Litter*..... 17

4.0 Development of Procedures on Site..... 17

5.0 Pollution Emission Register..... 18

6.0 Report on Programme for Public Information 18

Appendix A..... 20

Appendix B 21

Appendix C 22

Appendix D..... 23

1. Introduction

Panda were granted the EPA Waste Licence W0261-02 on the 11th February 2015, replacing the previous licence W0261-01 issued on the 31st August 2010. Panda are licenced to accept and process 250,000 tonnes per annum upon completion of necessary infrastructure. Appendix A illustrates the current site layout.

1.1 Company details

Licence No:	W0261-02
Name:	Nurendale t/a Panda Waste Services
Address:	Cappagh Road, Finglas, Dublin 11.
Telephone Number:	1890 626262
Fax Number:	046 9024189
Website:	www.panda.ie

1.2 Management Structure

Eamon Waters is the Managing Director of Panda. Brian McCabe and Noel Waters are company Directors. David Naughton is the Environmental Manager. Kieran Connor is the facility Manager and Noel Hehir is the deputy manager on site. There are 120 employees either working directly or indirectly at the facility. Appendix B illustrates the organisational structure of the facility.

1.3 Financial Provision

Costing's for both CRAMP and ELRA has been agreed with the Agency and the surety for financial provision is being considered by the Agency prior to implementation.

1.4 Environmental Policy

In carrying out our function, Panda acknowledge that our activities impact upon the environment both through routine internal operations and the actions of our staff.

It is Panda's policy to protect the environment during all activities, both on and off-site.

This is achieved by:

- Strategic preparation and implementation of operating procedures (including an emergency response procedure).
- Utilizing BAT (Best Available Technology).
- Actively promoting environmental awareness amongst staff and clients through appropriate training and communication programs.
- Reduce energy use through effective education and awareness and the installation of energy efficient technology where appropriate.
- Implementing a policy of continuous improvement, by means of targeted objectives. All objectives and targets are monitored and up-dated accordingly.

Panda are committed to complying with all relevant environmental regulations and aim to supply a safe competitive and sustainable service with specific regards to the surrounding environment.

1.5 Activities

Under the Industrial Emissions licence W0261-02, Panda conducts the following activities:

Recovery, or a mix of recovery and disposal, of non-hazardous waste with a capacity exceeding 75 tonnes per day involving one or more of the following activities, (other than activities to which the Urban Waste Water Treatment Regulations 2001 (S.I. No. 254 of 2001) apply):

(ii) Pre-treatment of waste for incineration or co-incineration

And

The recovery or disposal of waste in a facility, within the meaning of the Act in 1996, which facility is connected or associated with another activity specified in this Schedule in respect of which a licence or revised licence under Part IV is in force or in respect of which licence under the said Part is or will be required.

Panda provide a waste collection service for the domestic, commercial and industrial sectors throughout Ireland. In 2015 Panda were awarded “The Waste Collection operator of the year (Large)” in the Repak Pakman Awards.

The normal facility operating hours are 6am-6pm (Monday-Friday) & 6am-1pm (Saturdays). The facility is licensed to accept non-hazardous wastes only.

1.6 Waste Activities carried out at the Facility

Waste accepted and dispatched at the facility is weighed using P&L’s weighbridge software “IWS6”. Panda currently operates two building for waste acceptance. The facility is primarily used as a transfer facility. The facility accepts skip waste from construction and demolition sites, household renovations/clearances and C&I Dry mixed municipal waste (Non-black bag-putrescible waste) in Building A1. Ferrous, Non Ferrous, Wood, rubble, soil & stones, green waste and bulky waste are segregated from the incoming waste, in the facility manually and by using a track machine. The remaining mixed waste is then bulked up and sent onward to Panda’s headquarters for processing.

Source segregated cardboard, plastic & hangers and commercial and domestic dry mixed recyclables, mixed solid waste and brown bin waste are accepted in building A2. Where the Mixed Solid Waste and brown bin is accepted, the building is maintained under negative air pressure with the extracted being treated in an Odour Control Unit.

Source segregated baled cardboard, baled plastic and boxed plastic hangers are also accepted for bulking up from Dunnes Stores collections nationwide.

There is a dual weighbridge for incoming and outgoing waste.

1.7 Water Usage:

Water for dust suppression, office and amenities use is taken from a well. Water for fire fighting equipment i.e. hose reels and stand pipes is taken from public supply.

Water usage on site consists of:

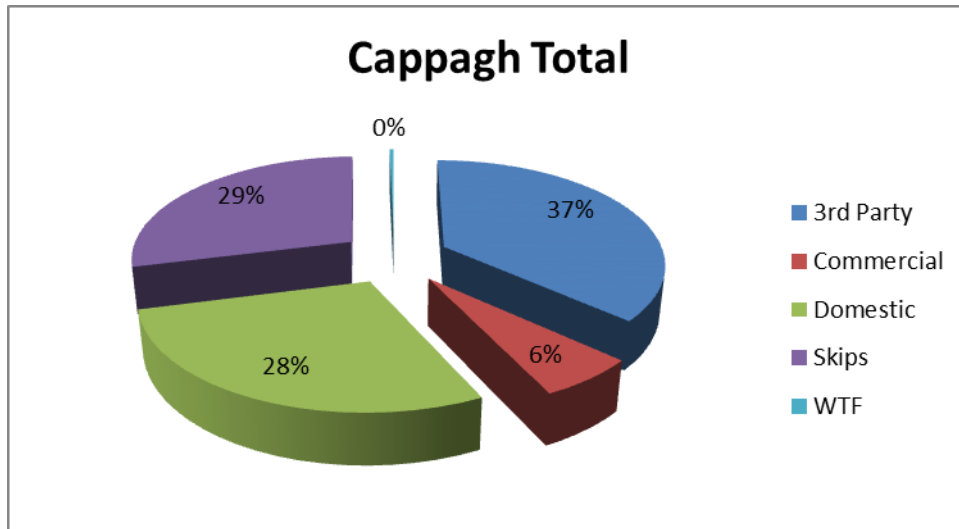
- In-house road sweeper (daily visits).
- Dust suppression sprayers in the shed and on the South-western external side of shed (as required)
- Hoses on site for dust suppression.
- Fire Fighting equipment.

2. Summary Information

2.1 Waste Received

The waste received at the facility from the 1st January 2015 to the 31st December 2015 was 108,580 tonnes. From the pie chart (Fig 1) it is evident that skip waste is the largest source of Panda's waste acceptance.

Fig. 1: Waste Collected by Panda by Customer profile.



2.2 Waste acceptance and dispatch summary

See attached Appendix C

2.3 Waste Recovery Reports

To contribute to the Landfill Directive, Panda operates various systems to maximise recovery and recycling with most processing being carried out in the headquarters' facility.

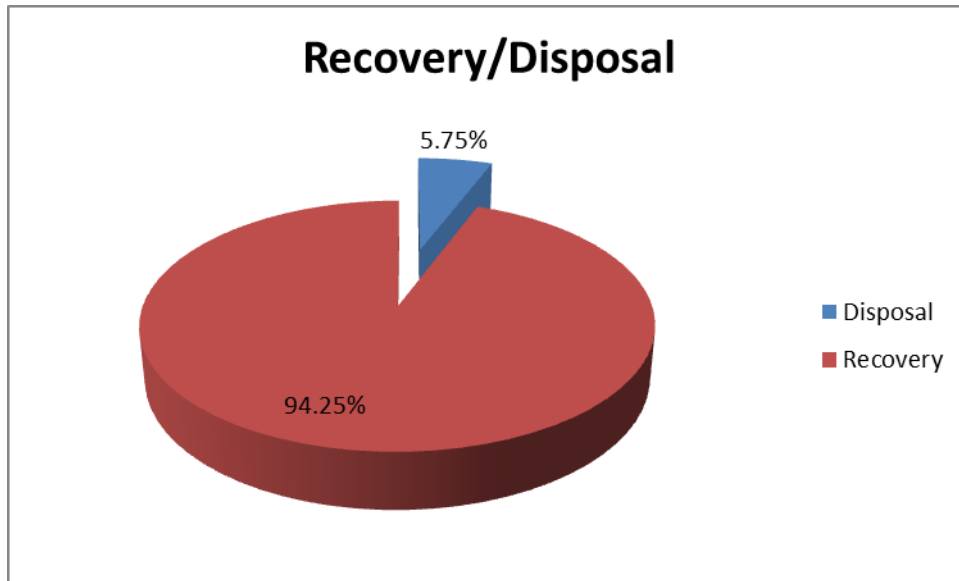
Panda applied to the Agency for a review the current Waste Licence (W0140-03) for the Beuparc facility in September 2009. This review was submitted to the Agency, so that Panda can produce a SRF/RDF product from the residual waste previously sent to Landfill. Panda also reviewed the licence for the purpose of constructing an Anaerobic Digestion/Composting plant. Panda have rolled out a source segregated collection service for biodegradable waste for both household and commercial customers.

Panda process the mixed C&D waste in the Beuparc facility in building 2, this includes a shredder, trommel, magnet, wind shifter and a picking line so as to divert as much C&D waste away from landfill as possible in order to comply with "A Resource Opportunity,

2012” for landfill diversion. To date the processing of C&D Waste has been extremely successful with the majority of the residual being processed into Solid Recovered Fuel.

Fig. 2 details the recovery rates of waste leaving Panda’s facility.

Fig. 2: Outgoing destination recovery rate.



2.4 Summary report on emissions and interpretation of environmental monitoring

Under Schedule C of the licence W0261-02, Panda are required to monitor storm water emissions, BMW content of municipal waste dispatched to landfill (Frequency-as specified by the Agency), noise and ambient air monitoring (Dust). The following sub-headings detail the results from independent laboratories of the different parameters and the emission limit values ELV’s set by the EPA and any complaints and incident that may have occurred during the year.

2.4.1 Surface Water

Storm water passes through a silt trap and oil interceptor prior to being discharged to the storm water network, which ultimately discharges into a tributary of the Tolka River. The surface water monitoring point is located at the south-eastern corner of the facility at the co-ordinates X/E 310429 Y/N 240420 (SW1).

2.4.2 Dust Emissions

As per schedule B5 for dust deposition limits, there are currently two sampling locations (AD1 and AD2). Monitoring is required bi-annually on site. A dust suppression unit was installed in the shed to ensure dust emissions from the tipping, sorting and reloading are kept to a minimum. Figs 3&4 illustrate dust recordings for 2015.

Fig. 3: Dust emission results for DS1 (AD1)

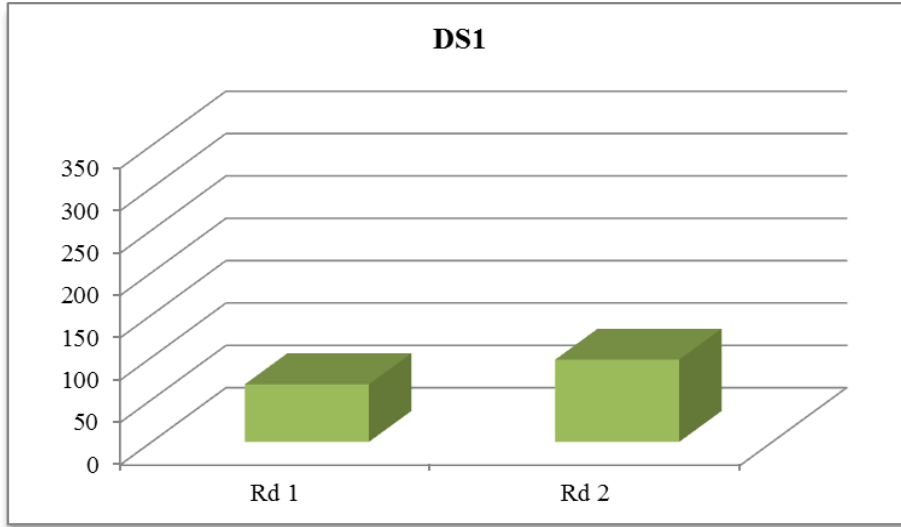
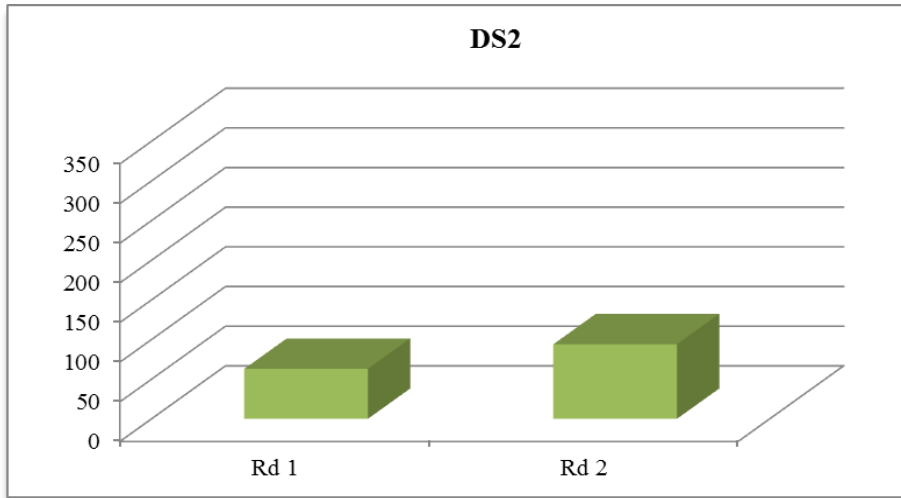


Fig. 4: Dust emission results for DS2 (AD2)



As per Schedule B.5, the dust deposition limit for the site is 350 mg m⁻² d⁻¹. Both DS1 and DS2 are well within licenced ELV's.

2.4.3 Noise Emissions

Noise emissions are monitored according to Schedule B.4 and the emission limit values (ELV) set out in Schedule C.5 of the licence. An independent competent consultant has been commissioned to conduct the noise sampling for the facility. Tables 1 - 3 detail results of noise monitoring conducted on the 17th December 2015.

Table 1. Day- time noise emissions 2015

Location	Time	Leq	L10	L90	Comments
AN1	15.22	53.3	54.4	49.6	Main noise emission from facility less than 55dBA
AN2	15.33	55.3	55.6	51.8	Noise from waste facility less than 55 dBA
ANSL1	15.46	72.7	76.2	58.2	Mainly road traffic noise and waste facility at less than 54.8 dBA
ANSL2	16.42	73.4	77.3	57.7	Mainly road traffic noise and waste facility less than Lmin of 54 dBA

NB Location of ANSL1 and ANSL2 are alongside the busy road traffic route

Table 2. Evening- time noise emissions 2015

Location	Time	Leq	L10	L90	Comments
ANSL1	21.06	56.5	58.7	44.8	Road traffic noise –no activity on site-no activity audible off-site at any NSL
ANSL2	21.23	56.1	58.2	44.4	Road traffic noise –no activity on site-no activity audible off-site at any NSL

Table 3. Night- time noise emissions 2015

Location	Time	Leq	L10	L90	Comments
ANSL1	23.14	55.7	57.2	44.4	Road traffic noise –no activity on site-no activity audible off-site at any NSL
ANSL2	23.03	55.2	57.4	44.2	Road traffic noise –no activity on site-no activity audible off-site at any NSL

2.4.5 Bund, pipe and underground storage tanks integrity

The integrity and water tightness of all underground pipes, all tanks, bunding structures and containers and their resistance to penetration by water and other materials is required to be carried out every three years and thereafter and reported to the Agency. The pipeline and UST integrity was tested in Q3 of 2015. The integrity of underground pipes, tanks was tested to be compliant. Testing was carried out of the bunds in January 2016 and again was found to be compliant.

2.4.6 Summary of resource and energy consumption

Table 4: Summary of Energy Consumption from January 2015 to December 2015.

Resource	
Gas Oil	116,647.6 Litres
Electricity	345.37 MWhr

2.4.7 Water

Dust control and amenity water is obtained from the well located off site. Fire fighting water is taken from public supply.

2.5 Site infrastructure

The following are details on infrastructure in the facility.

2.5.1 In-place

The current site infrastructure is outlined below in List 1. List 2 details the waste processing equipment used on site.

List 1: Current site infrastructure

1. Offices
2. Dual Weighbridge.
3. Two x Waste processing building
4. One x Dust suppression system
5. Ancillary ESB building
6. Canteen & toilets.

7. Water Attenuation Tank
8. Oil Interceptor
9. Fuel Depot
10. Fencing around the site
11. 1 x odour Control Unit

List 2: Waste processing equipment

3 x Forklifts	1 x Boa baler
1 x Moffit with clamps	2 x Volvo Loading Shovel
1 x Track machine	1 x multisweep
1 x Volvo Box Truck for hanger sorting	

There is sufficient back up within the group if any of the plant listed breaks down.

2.5.2 Planned Infra-structure

It is anticipated that the concrete yards will be completed by the middle of 2016 and the additional waste handling building (B1 and B2) being completed at a later date.

2.6 Progress Report on Proposals Developed to Minimise Water Demand & Trade Effluent Discharge

To minimise the water demand on site, Panda are investigating collecting the rainwater from the roof and using this for dust suppression around the yard.

2.7 PRTR Emission.

Panda's PRTR emission return is provided in Appendix D.

3. Environmental objectives and targets – 2015 and 2016.

No	Objective & Target	Method of Achievement	Responsibility	2015 Programme	Complete in 2015	2016 Programme
1	Assess the Effectiveness of Nuisance Control Procedures	Continually review and assess all nuisance control procedures to ensure minimal impact on surrounding area	Environmental Manager	July '15	Completed in '15	July '16
		Ensure yards are cleaned at the end of each working day	Operatives	Continuous	Continuous	Continuous
2	Prevent Water Pollution from Run-Off	Ensure all gullies are maintained and regularly cleaned	Environmental Manager/ Operatives	Continuous	Continuous	Continuous
		Ensure that levels in the trade effluent tank is maintained at an appropriate height	Environmental Manager/Operatives	Continuous	Continuous	Continuous
3	Assess & Review Resource & Energy Consumption at the site	Carry out an energy audit on the site	Environmental Manager	September '15	Completed in Feb '16	
4	Maintain and Develop the Environmental Management System	Maintain EMS Documentation on site	Environmental Manager	Continuous	Continuous	Continuous
		Update procedures to reflect operational and control changes				
5	Assess Waste Acceptance Procedures so as to minimise volume of erratic's	Communicate with customers about the items that are not acceptable in the in-coming wastes	Call Centre/Sales Reps	Continuous	Continuous	Continuous
6	Environmental Monitoring	Implement the Environmental Monitoring Programme specified in the Waste Licence	Environmental Manager	Continuous	Continuous	Continuous
		Investigate any accidents of emission limit values	Environmental Manager	Continuous	Continuous	Continuous
7	Ensure and implement a training programme	Identify staff training requirements and provide relevant training	Environmental Dept	July '15	Completed in '15	July '16

	Objective & Target	Method of Achievement	Responsibility	2015 Programme	Complete in 2015	2016 Programme
8	To control any emergencies that may arise at the facility	Review and implement an Emergency Response Procedure	Environmental Manager	July '15	Completed in '15	July '16
9	Ensure lighting in waste handling buildings provide sufficient lighting so as to assess incoming waste	Clean all light bulbs and covers in waste handling buildings	Environmental Manager/ Yard Supervisor	Aug '15	Complete in '15	N/a
10	Seek approval for the DMR building	Prepare documentation for lodging to the Agency for approval	Environmental Dept and Project manager	July '14	Reviewed licence granted	N/a
11	Office Recycling	Continuation of office recycling	Office Manager/ Environmental Department	Continuous	Continuous	Continuous
12	Pipe and UST Integrity Test	Carry out a Pipe and Underground Storage Tank Integrity Test	Environmental Manager	Dec '13	Completed	July '16
13	Pipeline Survey Test	Carrying out a pipe line integrity test	Environmental Manager	July '13	Completed	July '16
14	Yard Sweeper	Purchase Permanent yard sweeper for yard	Maintenance Dept	Q1 '15	Completed in '15	
16	Yard lighting	Upgrade to LED yard lighting internally and Externally	Maintenance Dept			March '16

3.1 Summary of reported incidents and complaints

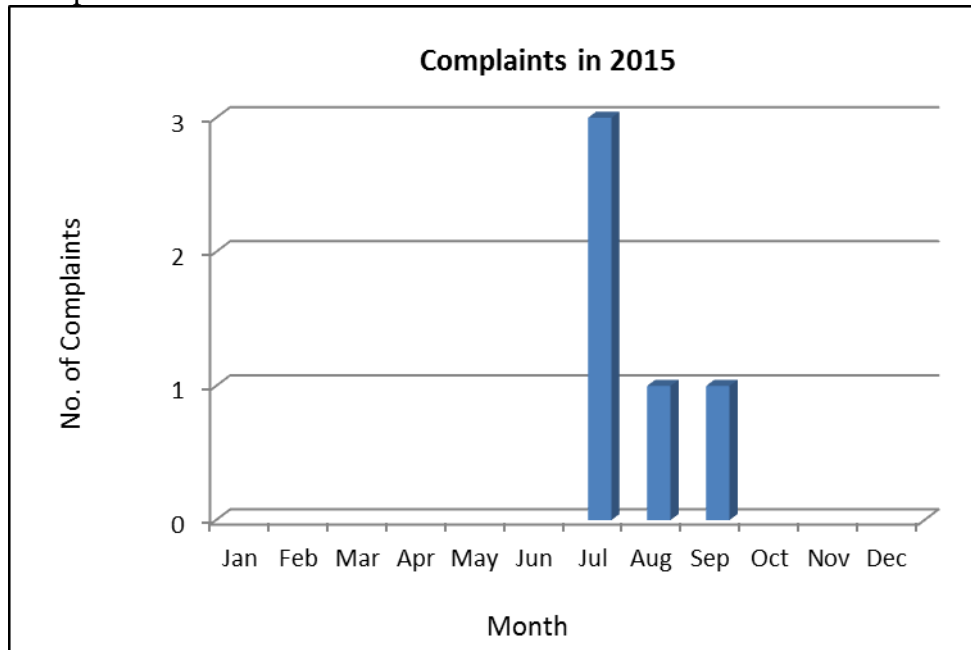
3.1.1 Reported Incidents Summary

No incidents occurred during this licence in 2015.

3.1.2 Complaints:

Fig. 5 illustrates complaints either made directly to the Agency or to Panda’s facility for each month during 2015. There were a total of 5 complaints made. All of these were thoroughly investigated and closed out in a timely fashion.

Fig. 5: Complaints



3.2 Review of nuisance controls

3.2.1 Odour

Odour emissions from the odorous waste accepted at the facility is controlled by way of maintaining the building under negative air pressure with the extracted air being treated in the Odour Control Unit.

There is a power washer available to wash odorous bins. Each day, the facility manager conducts an inspection of the site. Odour nuisances are included on this inspection.

3.2.2 Noise

The monitoring results showed that noise is not a nuisance, as only minimal plant operates on site.

3.2.3 Dust

A dust suppression system is installed in the shed and on the external (South-western side) of the building. A multisweep unit is on site and used regularly throughout the day for cleaning and is fitted with spray bars for dust suppression. Fire hoses are also available to spray water on concreted yards as required.

3.2.4 Vermin

A file on vermin control is maintained in the office. A sub-contractor is used to control any vermin on site.

3.2.5 Flies

Good housekeeping practices are used to prevent fly infestations. The yard is kept clean using a road sweeper and all waste for disposal is removed from the facility within 48 hours, or 72 hours in the case of a bank holiday weekends.

3.2.6 Birds

In order to avoid having birds as a nuisance, litter control is practised at all times, this includes regular litter patrols.

3.2.7 Litter

A designated member of staff carries out litter inspections of the facility twice daily and gathers any litter deposited.

4.0 Development of Procedures on Site

The Emergency Response Procedure (ERP) was reviewed and amended to reflect the changes of the company and update useful contact telephone numbers. SOP Numbers 22

and 23 (Daily Clean Down and Waste Storage Plan) were developed in 2015. A review of all other site procedures was also carried out.

5.0 Pollution Emission Register

After consulting the PERL list Panda are not using any substance that is listed at present.

6.0 Report on Programme for Public Information

Panda have re-developed their website in 2015; one of the features is an Environmental page where the following can be downloaded,

- Facility licences (W0140-03, **W0261-02**, W0263-01, W0039-02, W0238-01 and W0003-03)
- Multi-regional Waste collection permit (NWCPO-14-11326-02),
- TFS Broker licences,
- Customer Charter,
- Environmental Policy,

Domestic wheelie bin customers can also download their relevant collection calendar and pay bills.

Panda have a news section on the website, with regular updates on collections, offers, etc.

Over the Christmas period 2015 Panda put advertisements in all the local newspapers to inform customers of the schedule of bin collections over the Christmas Period. Panda also issued all domestic customers with a Christmas calendar showing collection days over that period. If there were any change to a domestic route, this would also be advertised in the local media.

In March 2009, Panda commenced SMS messaging to domestic customers regarding their collections. Panda are also encouraging customers to receive email invoicing, thereby reducing dependence on paper invoices and envelopes.

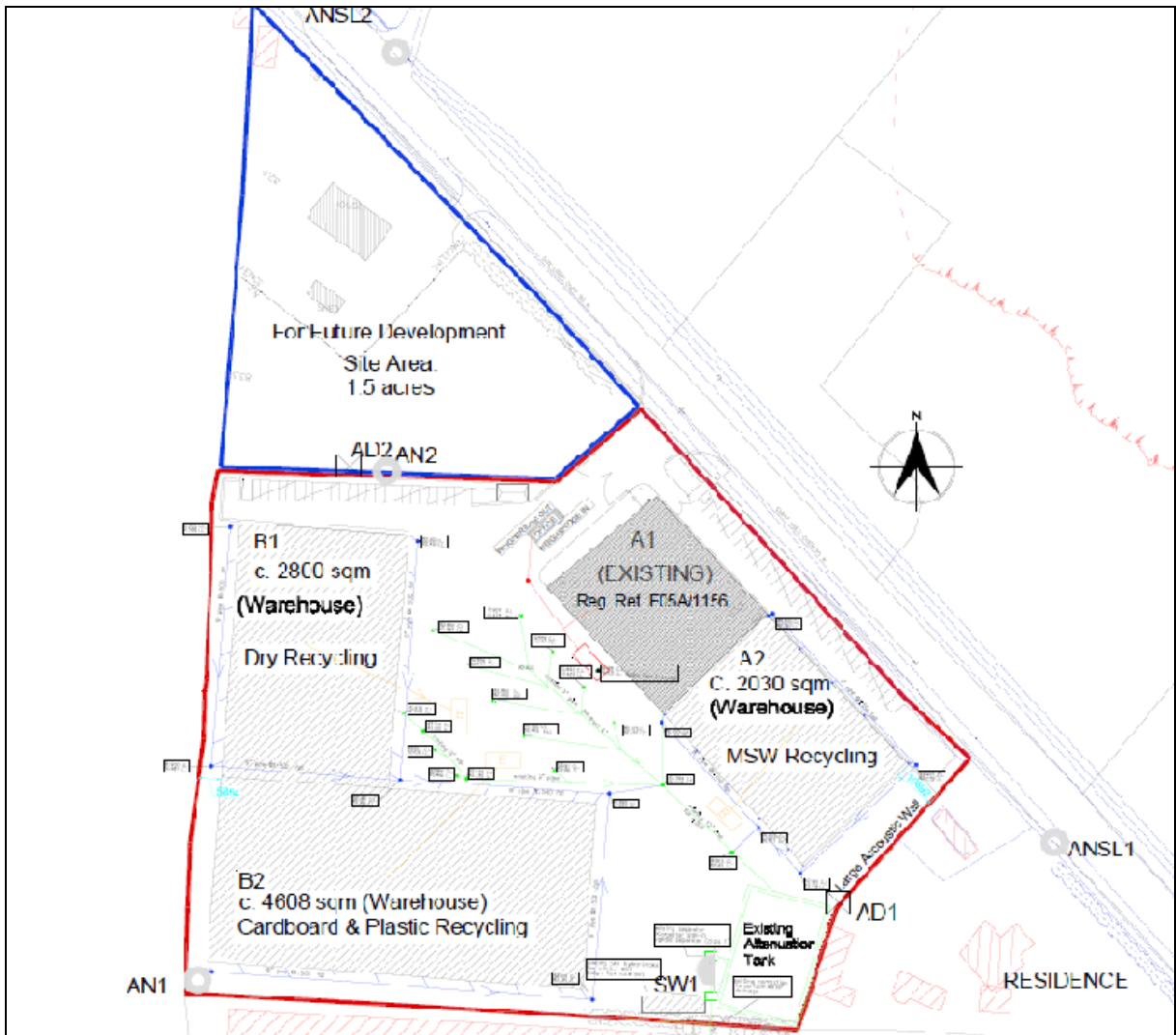
Recycling certificates are issued to customers, on request, so that they can determine their recycling on a weekly/monthly or annual basis.

Advertisements are taken out regularly in the local newspapers informing customers of the services that Panda offer.. Tours of the facilities are given to schools and to members of the public upon request. During the reporting period there were no requests from members of the public to inspect any Environmental Records.

The information in the Annual Environmental Report is true and accurate representation of the activities conducted by Panda in 2015.

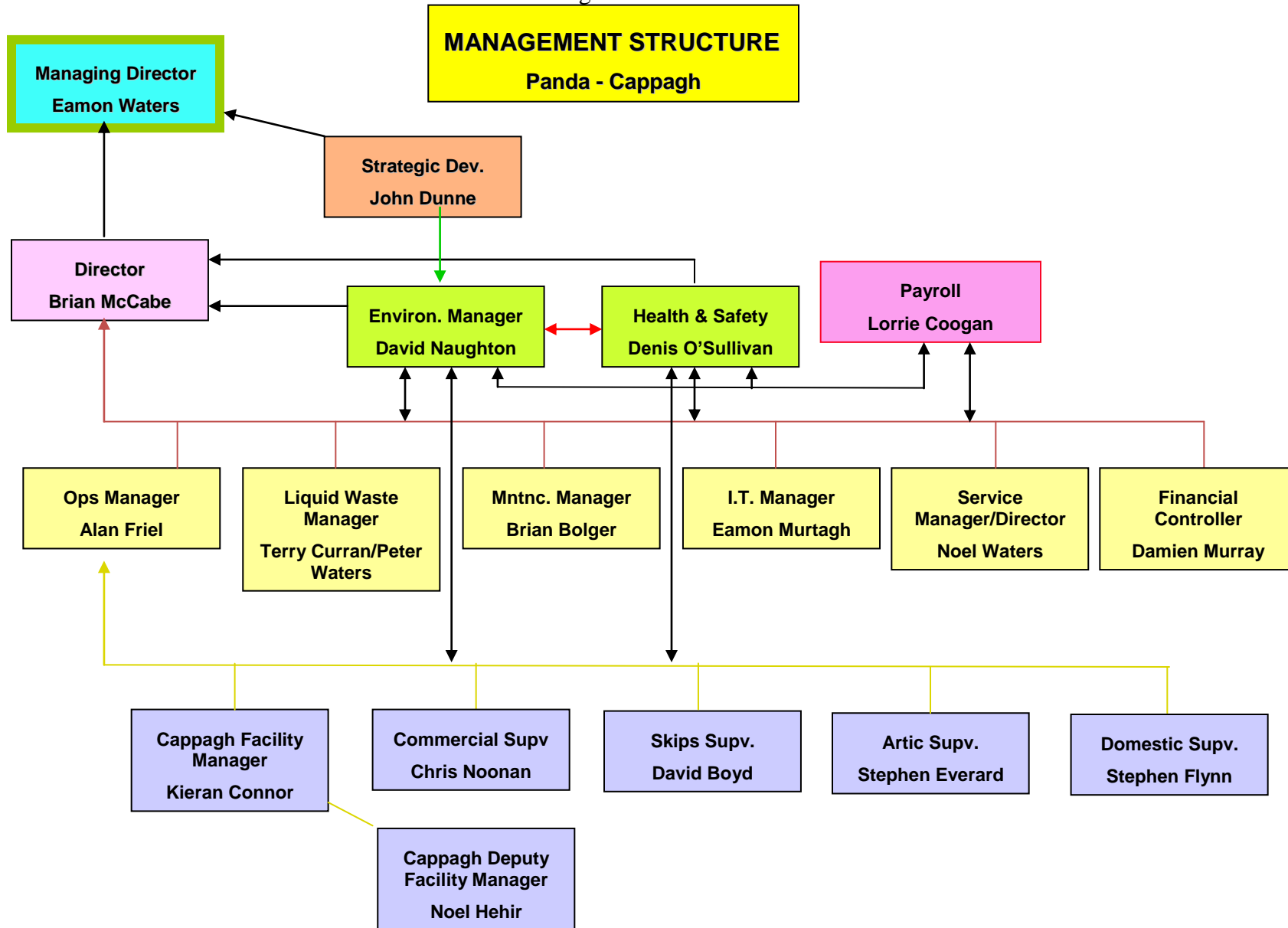
Appendix A

Site Layout



Appendix B

Organisational Structure



Appendix C

Waste summary

EWC Code	Incoming 2015	Outgoing 2015
15 01 01	21324.542	21718.8
15 01 02	2410.508	2093.02
15 01 03	66.69	
16 01 03		27.38
16 03 06	5.02	
17 01 07	804.51	
17 02 01	380.84	
17 05 04	2729.65	11496.88
17 08 02	281.86	499.539
17 09 04	27793.363	
19 08 01	1.98	
19 12 02	4.14	1571.584
19 12 03		39.208
19 12 07	8.74	5509.317
19 12 12		13772.89
20 01 01	7212.36	7155.839
20 01 02	53.56	
20 01 08	5702.46	5805.02
20 01 11	12.96	
20 01 34		3.72
20 01 36	8.46	103.14
20 01 38	1076.54	
20 01 39	50.686	227.04
20 01 40	250.36	
20 02 01	174.8	595.22
20 03 01	38226.223	41012.637
Total	108580.252	111631.234

Appendix D

PRTR Emissions



[PRTR# : W0261 | Facility Name : Nurendale (Cappagh Road) | Filename : W0261_2015 PRTR.xls | Return Year : 2015]

[Guidance to completing the PRTR workbook](#)

PRTR Returns Workbook

Version 1.1.19

REFERENCE YEAR	2015
-----------------------	------

1. FACILITY IDENTIFICATION

Parent Company Name	Nurendale
Facility Name	Nurendale (Cappagh Road)
PRTR Identification Number	W0261
Licence Number	W0261-02

Classes of Activity

No.	class_name
-	Refer to PRTR class activities below

Address 1	Cappagh Road
Address 2	Finglas
Address 3	Dublin 11
Address 4	
	Dublin
Country	Ireland
Coordinates of Location	-6.33881 53.40272
River Basin District	IEEA
NACE Code	3832
Main Economic Activity	Recovery of sorted materials
AER Returns Contact Name	David Naughton
AER Returns Contact Email Address	David.naughton@nurendale.ie
AER Returns Contact Position	Environmental Manager
AER Returns Contact Telephone Number	1890626262
AER Returns Contact Mobile Phone Number	086 6045905
AER Returns Contact Fax Number	0469024189
Production Volume	0.0
Production Volume Units	
Number of Installations	0
Number of Operating Hours in Year	0
Number of Employees	120
User Feedback/Comments	
Web Address	www.panda.ie

2. PRTR CLASS ACTIVITIES

Activity Number	Activity Name
50.1	General
5(a)	Installations for the recovery or disposal of hazardous waste
5(c)	Installations for the disposal of non-hazardous waste
50.1	General

3. SOLVENTS REGULATIONS (S.I. No. 543 of 2002)

Is it applicable?	No
Have you been granted an exemption?	
If applicable which activity class applies (as per Schedule 2 of the regulations)?	
Is the reduction scheme compliance route being used?	

4. WASTE IMPORTED/ACCEPTED ONTO SITE

[Guidance on waste imported/accepted onto site](#)

Do you import/accept waste onto your site for on-site treatment (either recovery or disposal activities)?	No
---	----

This question is only applicable if you are an IPPC or Quarry site

4.1 RELEASES TO AIR

[Link to previous years emissions data](#)

| PRTR#: W0261 | Facility Name: Nurendale (Cappagh Road) | Filename: W0261_2015 PRTR.xls | Return Year: 2015 |

30/03/2016 12:50

SECTION A : SECTOR SPECIFIC PRTR POLLUTANTS

POLLUTANT		METHOD			QUANTITY			
No. Annex II	Name	M/C/E	Method Code	Designation or Description	Emission Point 1	T (Total) KG/Year	A (Accidental) KG/Year	F (Fugitive) KG/Year
					0.0	0.0	0.0	0.0

* Select a row by double-clicking on the Pollutant Name (Column B) then click the delete button

SECTION B : REMAINING PRTR POLLUTANTS

POLLUTANT		METHOD			QUANTITY			
No. Annex II	Name	M/C/E	Method Code	Designation or Description	Emission Point 1	T (Total) KG/Year	A (Accidental) KG/Year	F (Fugitive) KG/Year
					0.0	0.0	0.0	0.0

* Select a row by double-clicking on the Pollutant Name (Column B) then click the delete button

SECTION C : REMAINING POLLUTANT EMISSIONS (As required in your Licence)

POLLUTANT		METHOD			QUANTITY				
Pollutant No.	Name	M/C/E	Method Code	Designation or Description	US1	US2	T (Total) KG/Year	A (Accidental) KG/Year	F (Fugitive) KG/Year
210	Dust	M	ALT	Gravimetry	Emission Point 1	Emission Point 2	0.03	0.06	0.0

* Select a row by double-clicking on the Pollutant Name (Column B) then click the delete button

Additional Data Requested from Landfill operators

For the purposes of the National Inventory on Greenhouse Gases, landfill operators are requested to provide summary data on landfill gas (Methane) flared or utilised on their facilities to accompany the figures for total methane generated. Operators should only report their Net methane (CH4) emission to the environment under T(total) KG/yr for Section A: Sector specific PRTR pollutants above. Please complete the table below:

Landfill:		Method Used			
Please enter summary data on the quantities of methane flared and / or utilised		M/C/E	Method Code	Designation or Description	Facility Total Capacity m3 per hour
Total estimated methane generation (as per site model)	T (Total) kg/Year	0.0			N/A
Methane flared		0.0			0.0 (Total Flaring Capacity)
Methane utilised in engine/s		0.0			0.0 (Total Utilising Capacity)
Net methane emission (as reported in Section A above)		0.0			N/A

4.2 RELEASES TO WATERS

[Link to previous years emissions data](#)

| PRTR# : W0261 | Facility Name : Nurondale (Cappagh Road) | Filename : W0261_2015 PRTR.xls | Return Year : 2015 |

30/03/2016 12:50

SECTION A : SECTOR SPECIFIC PRTR POLLUTANTS

Data on ambient monitoring of storm/surface water or groundwater, conducted as part of your licence requirements, should NOT be submitted under AER / PRTR Reporting as this only concerns Releases from your facility

RELEASES TO WATERS					Please enter all quantities in this section in KGs			
POLLUTANT		METHOD USED			QUANTITY			
No. Annex II	Name	M/C/E	Method Code	Designation or Description	Emission Point 1	T (Total) KG/Year	A (Accidental) KG/Year	F (Fugitive) KG/Year
					0.0	0.0	0.0	0.0

* Select a row by double-clicking on the Pollutant Name (Column B) then click the delete button

SECTION B : REMAINING PRTR POLLUTANTS

RELEASES TO WATERS					Please enter all quantities in this section in KGs			
POLLUTANT		METHOD USED			QUANTITY			
No. Annex II	Name	M/C/E	Method Code	Designation or Description	Emission Point 1	T (Total) KG/Year	A (Accidental) KG/Year	F (Fugitive) KG/Year
					0.0	0.0	0.0	0.0

* Select a row by double-clicking on the Pollutant Name (Column B) then click the delete button

SECTION C : REMAINING POLLUTANT EMISSIONS (as required in your Licence)

RELEASES TO WATERS					Please enter all quantities in this section in KGs			
POLLUTANT		METHOD USED			QUANTITY			
Pollutant No.	Name	M/C/E	Method Code	Designation or Description	Emission Point 1	T (Total) KG/Year	A (Accidental) KG/Year	F (Fugitive) KG/Year
					0.0	0.0	0.0	0.0

* Select a row by double-clicking on the Pollutant Name (Column B) then click the delete button

4.3 RELEASES TO WASTEWATER OR SEWER

[Link to previous years emissions data](#)

| PRTR# : W0261 | Facility Name : Nurondale (Cappagh Road) | Filename : W0261_2015 PRTR.xls |

30/03/2016 12:51

SECTION A : PRTR POLLUTANTS

OFFSITE TRANSFER OF POLLUTANTS DESTINED FOR WASTE-WATER TREATMENT OR SEWER					Please enter all quantities in this section in KGs			
POLLUTANT		METHOD			QUANTITY			
No. Annex II	Name	M/C/E	Method Code	Designation or Description	Emission Point 1	T (Total) KG/Year	A (Accidental) KG/Year	F (Fugitive) KG/Year
					0.0	0.0	0.0	0.0

* Select a row by double-clicking on the Pollutant Name (Column B) then click the delete button

SECTION B : REMAINING POLLUTANT EMISSIONS (as required in your Licence)

OFFSITE TRANSFER OF POLLUTANTS DESTINED FOR WASTE-WATER TREATMENT OR SEWER					Please enter all quantities in this section in KGs			
POLLUTANT		METHOD			QUANTITY			
Pollutant No.	Name	M/C/E	Method Code	Designation or Description	Emission Point 1	T (Total) KG/Year	A (Accidental) KG/Year	F (Fugitive) KG/Year
					0.0	0.0	0.0	0.0

* Select a row by double-clicking on the Pollutant Name (Column B) then click the delete button

4.4 RELEASES TO LAND
[Link to previous years emissions data](#)

| PRTR#: W0261 | Facility Name : Nurendale (Cappagh Road) | Filename : W0261_2015 PRTR.xls | Return Year : 2015 |

30/03/2016 12:52

SECTION A : PRTR POLLUTANTS

POLLUTANT		RELEASURES TO LAND			Please enter all quantities in this section in KGs		
No. Annex II	Name	M/C/E	METHOD		Emission Point 1	QUANTITY	
			Method Code	Designation or Description		T (Total) KG/Year	A (Accidental) KG/Year
						0.0	0.0

* Select a row by double-clicking on the Pollutant Name (Column B) then click the delete button

SECTION B : REMAINING POLLUTANT EMISSIONS (as required in your Licence)

POLLUTANT		RELEASURES TO LAND			Please enter all quantities in this section in KGs		
Pollutant No.	Name	M/C/E	METHOD		Emission Point 1	QUANTITY	
			Method Code	Designation or Description		T (Total) KG/Year	A (Accidental) KG/Year
						0.0	0.0

* Select a row by double-clicking on the Pollutant Name (Column B) then click the delete button

5. ONSITE TREATMENT & OFFSITE TRANSFERS OF WASTE

[PRTR# : W0261 | Facility Name : Nurendale (Cappagh Road) | Filename : W0261_2015 PRTR.xls | Return Year : 2015]

30/09/2016 12:53

Please enter all quantities on this sheet in Tonnes

67

Transfer Destination	European Waste Code	Hazardous	Quantity (Tonnes per Year)	Description of Waste	Waste Treatment Operation	Method Used		Location of Treatment	Haz Waste - Name and Licence/Permit No of Next Destination Facility Non-Haz Waste - Name and Licence/Permit No of Recover/Depositor	Haz Waste - Address of Next Destination Facility Non-Haz Waste - Address of Recover/Depositor	Name and Licence / Permit No. and Address of Final Recoverer / Depositor (HAZARDOUS WASTE ONLY)	Actual/Address of Final Destination (i.e. Final Recovery / Disposal Site) (HAZARDOUS WASTE ONLY)
						M/C/E	Method Used					
Within the Country	15 01 01	No	3543.78	paper and cardboard packaging	R12	M	Weighed	Offsite in Ireland	Irish Packaging Recycling Ltd, W0263-01	Lower Ballymount Road, Walkinstown, Dublin 12, Ireland		
Within the Country	15 01 01	No	26.14	paper and cardboard packaging	R12	M	Weighed	Offsite in Ireland	Panda Navan, W0140-03	Rathdinnagh, Beauparc, Navan, Co. Meath, Ireland		
Within the Country	15 01 01	No		paper and cardboard packaging	R12	M	Weighed	Offsite in Ireland	Dublin City Council MRF, W0239-01	Merrywell Business Park, Ballymount, Dublin 12, Ireland		
Within the Country	15 01 02	No	2083.4	plastic packaging	R12	M	Weighed	Offsite in Ireland	Irish Packaging Recycling Ltd, W0263-01	Lower Ballymount Road, Walkinstown, Dublin 12, Ireland		
Within the Country	15 01 03	No		wooden packaging	R12	M	Weighed	Offsite in Ireland	Conroy Recycling Company Ltd, WFP-WH-2009-0002-01	Sonna, Slanemore, Mullingar, Co. Westmeath, Ireland		
Within the Country	16 01 03	No	13.24	end-of-life tyres	R1	M	Weighed	Offsite in Ireland	Wilton Waste Recycling Ltd, WFP-CN-10-0005-01(1)	Kiffagh, Crosserough, Ballyjamesduff, Co. Cavan, Ireland		
Within the Country	16 01 03	No	14.14	end-of-life tyres	R12	M	Weighed	Offsite in Ireland	Irish Packaging Recycling Ltd, W0263-01	Lower Ballymount Road, Walkinstown, Dublin 12, Ireland		
Within the Country	17 01 07	No		mixture of concrete, bricks, tiles and ceramics other than those mentioned in 17 01 06	R12	M	Weighed	Offsite in Ireland	Behans Land Restoration Ltd, W0247-01	Blackhall, Punchestown, Naas, Co. Kildare, Ireland		
Within the Country	17 02 01	No		wood	R12	M	Weighed	Offsite in Ireland	Nurendale, W0140-03	Beauparc Business Park, Navan, Co. Meath, Ireland		
Within the Country	17 05 04	No	11496.88	soil and stones other than those mentioned in 17 05 03	R10	M	Weighed	Offsite in Ireland	Behans Land Restoration Ltd, W0247-01	Blackhall, Punchestown, Naas, Co. Kildare, Ireland		
Within the Country	17 05 04	No		soil and stones other than those mentioned in 17 05 03	R10	M	Weighed	Offsite in Ireland	Murphy Environmental, W0129-01	Hollywood Great, Nags Head, The Naul, Co. Dublin, Ireland		
Within the Country	17 05 04	No		soil and stones other than those mentioned in 17 05 03	R12	M	Weighed	Offsite in Ireland	Nurendale, W0140-03	Beauparc Business Park, Navan, Co. Meath, Ireland		
To Other Countries	17 08 02	No		gypsum-based construction materials other than those mentioned in 17 08 01	R12	M	Weighed	Abroad	Baron Recycling Ltd, NI 070049	31 The Dales, Cookstown, Co. Tyrone, BT80 8TF, United Kingdom		
Within the Country	17 08 02	No	56.64	gypsum-based construction materials other than those mentioned in 17 08 01	R12	M	Weighed	Offsite in Ireland	Nurendale, W0140-03	Beauparc Business Park, Navan, Co. Meath, Ireland		
To Other Countries	17 08 02	No		gypsum-based construction materials other than those mentioned in 17 08 01	R12	M	Weighed	Abroad	Lavery (Patrick), LN 11/69/T	129A Coolkeeran Road, Loughgule, Ballymean, Co. Antrim BT44 9JL, United Kingdom		
To Other Countries	17 08 02	No	443.9	gypsum-based construction materials other than those mentioned in 17 08 01	R12	M	Weighed	Abroad	MacNabb Bros. Waste Disposal Ltd, LN/09/111/M	Down, BT30 7QB, United Kingdom		
Within the Country	17 09 04	No		mixed construction and demolition wastes other than those mentioned in 17 09 01, 17 09 02 and 17 09 03	R12	M	Weighed	Offsite in Ireland	Nurendale, W0140-03	Beauparc Business Park, Navan, Co. Meath, Ireland		
Within the Country	19 12 02	No	1185.06	ferrous metal	R12	M	Weighed	Offsite in Ireland	Multimetals, WFP-WW-09-0014-01	Conway Port Industrial Estate, Bolanney, Murrough, Co. Wicklow, Ireland		

Within the Country	19 12 02	No	ferrous metal	R12	M	Weighed	Offsite in Ireland	Electrical Waste Management Ltd,WFP-DS-09-0012-01	Block 402 Jordanstown Drive,Greenogue Industrial Estate,Rathcoole,Co. Dublin,Ireland
Within the Country	19 12 02	No	379.78 ferrous metal	R12	M	Weighed	Offsite in Ireland	Nurendale,W0140-03	Beauparc Business Park,Navan,Co. Meath,,Ireland
Within the Country	19 12 02	No	6.74 ferrous metal	R12	M	Weighed	Offsite in Ireland	Wilton Waste Recycling Ltd,WFP-CN-10-0005-01(1)	Killagh,Crosserlough,Ballyja mesduff,Co. Cavan,Ireland
Within the Country	19 12 03	No	non-ferrous metal	R12	M	Weighed	Offsite in Ireland	Nurendale,W0140-03	Beauparc Business Park,Navan,Co. Meath,,Ireland
Within the Country	19 12 03	No	2.72 non-ferrous metal	R12	M	Weighed	Offsite in Ireland	Multimetals,WFP-WW-09-0014-01	Conway Port Industrial Estate,Bollamney,Murrrough,Co. Wicklow,Ireland
Within the Country	19 12 03	No	34.75 non-ferrous metal	R12	M	Weighed	Offsite in Ireland	Wilton Waste Recycling Ltd,WFP-CN-10-0005-01(1)	Killagh,Crosserlough,Ballyja mesduff,Co. Cavan,Ireland
Within the Country	19 12 07	No	5154.92 wood other than that mentioned in 19 12 06	R12	M	Weighed	Offsite in Ireland	Nurendale,W0140-03	Beauparc Business Park,Navan,Co. Meath,,Ireland
Within the Country	19 12 07	No	wood other than that mentioned in 19 12 06	R12	M	Weighed	Offsite in Ireland	Irish Packaging Recycling ,W0263-01	Lower Ballymount Road,Walkinstown,Dublin 12,,Ireland
Within the Country	19 12 10	No	SRF other wastes (including mixtures of materials) from mechanical treatment of wastes other than those mentioned in 19 12	R1	M	Weighed	Offsite in Ireland	Lagan Cement,P0487	Kinnegad,Co. Westmeath,,Ireland
Within the Country	19 12 12	No	13772.99 11	R12	M	Weighed	Offsite in Ireland	Nurendale,W0140-03	Beauparc Business Park,Navan,Co. Meath,,Ireland
Within the Country	19 12 12	No	RDF	R12	M	Weighed	Offsite in Ireland	Panda Navan,W0140-03	Rathdrinagh,Beauparc,Navan,Co. Meath,Ireland
To Other Countries	20 01 02	No	glass	R12	M	Weighed	Abroad	Regen,44110	Shepherds Drive,Cambane Industrial Estate,Newry Co. Down,BT35 6JQ,United Kingdom
Within the Country	20 01 34	No	batteries and accumulators other than those 3.72 mentioned in 20 01 33	R12	M	Weighed	Offsite in Ireland	St. Margarets Recycling & Transfer Centre Ltd,WFP-FG-13-0002-01	Sandyhills,St. Margarets ,Co. Dublin ,?,Ireland
Within the Country	20 01 36	No	discarded electrical and electronic equipment other than those mentioned in 20 01 21, 20 01 23 and 20 01 35	R12	M	Weighed	Offsite in Ireland	KMK Metals Recycling Ltd,W0113-03	Cappincur Industrial Estate,Daingean Road,Tullamore,Co. Offaly,Ireland
Within the Country	20 01 36	No	discarded electrical and electronic equipment other than those mentioned in 20 01 21, 20 01 23 and 20 01 35	R12	M	Weighed	Offsite in Ireland	Wilton Waste Recycling Ltd,WFP-CN-10-0005-01(1)	Killagh,Crosserlough,Ballyja mesduff,Co. Cavan,Ireland
Within the Country	20 01 39	No	40.24 plastics	R12	M	Weighed	Offsite in Ireland	Irish Packaging Recycling ,W0263-01	Lower Ballymount Road,Walkinstown,Dublin 12,,Ireland
Within the Country	20 01 39	No	186.8 plastics	R12	M	Weighed	Offsite in Ireland	Leinster Environmental,WFP-LH-11-0002-01	Clermont Business Park,Haynestown TD,Haggardstown,Dundaik Co. Louth,Ireland
Within the Country	20 02 01	No	580.56 biodegradable waste	R3	M	Weighed	Offsite in Ireland	Bord Na Mona,W0198.01	Kilbery,Atty,Co. Kildare,,Ireland
Within the Country	20 02 01	No	biodegradable waste	R3	M	Weighed	Offsite in Ireland	Enrich,WFP-MH-08-0004-02	Larch Hill Stud,Newtownrathgarley,Kilcock,Co. Meath,Ireland
Within the Country	20 02 01	No	14.66 biodegradable waste	R13	M	Weighed	Offsite in Ireland	Nurendale,W0039-02	Ballymount Cross,Tallaght,Dublin 24,,Ireland
Within the Country	20 03 01	No	mixed municipal waste	R13	M	Weighed	Offsite in Ireland	Nurendale,W0039-02	Ballymount Cross,Tallaght,Dublin 24,,Ireland
Within the Country	20 03 01	No	mixed municipal waste	D1	M	Weighed	Offsite in Ireland	Whiteriver Landfill,W0060-02	Dunleer,Co. Louth,,Ireland
Within the Country	20 03 01	No	15178.49 Dry Recyclables	R12	M	Weighed	Offsite in Ireland	Dublin City Council MRF,W0238-01	Merrywell Business Park,Ballymount,Dublin 12,,Ireland

Within the Country	20 03 01	No	Dry Recyclables	R12	M	Weighted	Offsite in Ireland	Dillon waste and recycling,WFP KY 10-001	The Kermes,Tralee,Co. Kerry, Ireland
Within the Country	20 03 01	No	37.08 Dry Recyclables	R12	M	Weighted	Offsite in Ireland	Irish Packaging Recycling Ltd,W0263-01	Lower Ballymount Road,Walkinstown,Dublin 12, Ireland
Within the Country	20 03 01	No	Dry Recyclables	R12	M	Weighted	Offsite in Ireland	Killarney Waste Disposal,W0217-01	Aughacurreen,Killarney,Co. Kerry, Ireland
Within the Country	20 03 01	No	Dry Recyclables	R13	M	Weighted	Offsite in Ireland	Panda Navan,W0140-03	Rathdrinagh,Beauparc,Navan,Co. Meath,Ireland
To Other Countries	20 03 01	No	2900.15 Dry Recyclables	R12	M	Weighted	Abroad	Regen,44110	Shepherds Drive,Carnbane Industrial Estate,Newry Co. Down,BT35 6JQ,United Kingdom
Within the Country	20 03 01	No	Dry Recyclables	R12	M	Weighted	Offsite in Ireland	Thomlons Recycling,WFP-DC-10-0021-02	Unit 51 Henry Road,Park West Business Park,Dublin 12, Ireland
Within the Country	20 03 01	No	6049.22 mixed municipal waste	R1	M	Weighted	Offsite in Ireland	Indaver,W0167	Carranstown,Duleek,Co. Meath, Ireland
Within the Country	20 03 01	No	9473.38 Dry Waste	R12	M	Weighted	Offsite in Ireland	Nurendale,W0140-03	Beauparc Business Park,Navan,Co. Meath, Ireland
Within the Country	20 03 01	No	514.24 mixed municipal waste	D1	M	Weighted	Offsite in Ireland	Bord na Mona Drehid,W0201-03	Carbury,Co. Kildare, Ireland
Within the Country	20 01 08	No	1165.88 biodegradable kitchen and canteen waste	R3	M	Weighted	Offsite in Ireland	Acorn Recycling Ltd,W0249-01	Ballybeg,Littleton,Co. Tipperary, Ireland
Within the Country	15 01 02	No	9.62 plastic packaging	R12	M	Weighted	Offsite in Ireland	Dublin City Council MRF,W0238-01	Merrywell Business Park,Ballymount,Dublin 12, Ireland
Within the Country	19 12 03	No	1.74 non-ferrous metal	R4	M	Weighted	Offsite in Ireland	St. Margarets Recycling & Transfer Centre Ltd,WFP-FG-15-0002-01	Sandyhills,St. Margarets ,Co. Dublin , Ireland
Within the Country	19 12 07	No	354.4 wood other than that mentioned in 19 12 06	R12	M	Weighted	Offsite in Ireland	Padraic Thomton Waste Disposal Ltd,WFP-KE-10-061-01	Oldmilltown,Kill,Co. Kildare, Ireland
To Other Countries	20 01 08	No	1925.72 biodegradable kitchen and canteen waste	R3	M	Weighted	Abroad	Natural World Products,P0341-10A	Glenside Road,Dunmurry,Co. Antrim,BT17 0LH,United Kingdom
To Other Countries	20 01 08	No	1879.12 biodegradable kitchen and canteen waste	R3	M	Weighted	Abroad	Natural World Products,P0479/15A	55 Cargaclougher Rd,Keady,Co. Armagh,BT60 3PA, United Kingdom
Within the Country	20 01 08	No	834.3 biodegradable kitchen and canteen waste	R13	M	Weighted	Offsite in Ireland	Nurendale,W0039-02	Ballymount Cross,Tallaght,Dublin 24, Ireland
Within the Country	20 03 01	No	5901.98 mixed municipal waste	D1	M	Weighted	Offsite in Ireland	Knockharley Landfill,W0146-02	Knockharley,Navan,Co. Meath, Ireland
Within the Country	20 03 01	No	4.96 Dry Recyclables	R12	M	Weighted	Offsite in Ireland	Leinster Environmental,WFP-LH-11-0002-01	Clermont Business Park,Haynestown TD,Haggardstown,Dundalk Co. Louth,Ireland
Within the Country	20 03 01	No	951.68 mixed municipal waste	R12	M	Weighted	Offsite in Ireland	SDCC Baling Station,W0003-03	Ballymount Road,Walkinstown,Dublin 12, Ireland
Within the Country	20 03 01	No	1.46 Dry Recyclables	R12	M	Weighted	Offsite in Ireland	Wilton Waste Recycling Ltd,WFP-CN-10-0005-01(1)	Kiltagh,Crosserlough,Ballyjamesduff,Co. Cavan,Ireland
To Other Countries	15 01 01	No	18148.88 paper and cardboard packaging	R12	M	Weighted	Abroad	Nurendale Broker,IREAG133-17	Lower Ballymount rd,Walkinstown,Dublin 12, Ireland
To Other Countries	20 01 01	No	715.31 paper and cardboard	R12	M	Weighted	Abroad	Nurendale Broker,IREAG133-17	Lower Ballymount rd,Walkinstown,Dublin 12, Ireland
To Other Countries	20 01 01	No	6440.53 paper and cardboard	R12	M	Weighted	Abroad	Nurendale Broker,IREAG133-17	Lower Ballymount rd,Walkinstown,Dublin 12, Ireland