



*Site: Ballymount Road, Walkinstown, Dublin 12.*

*Waste Licence Number W0263-01*

*Annual Environmental Report*

*01<sup>st</sup> January 2015 – 31<sup>st</sup> December 2015*

## Table of Contents

Table of Contents .....	2
1.0 Introduction.....	4
1.1 Company details.....	4
1.2 Management Structure .....	5
1.3 Financial Provision .....	5
1.4 Environmental Policy.....	5
1.5 Activities .....	6
1.6 Waste Activities carried out at the Facility.....	6
1.7 Water Usage:.....	7
2.0 Summary Information.....	7
2.1 Waste Received.....	7
2.2 Waste Transferred Off-Site for Disposal or Recovery .....	8
2.3 Summary report on emissions and interpretation of environmental monitoring .....	8
2.3.1 <i>Surface Water</i> .....	8
2.3.2 <i>Dust Emissions</i> .....	8
2.3.3 <i>Noise Emissions</i> .....	10
2.3.4 <i>Bund, pipe and underground storage tanks integrity</i> .....	11
2.3.5 <i>Summary of resource and energy consumption</i> .....	11
2.3.6. <i>Water</i> .....	11
2.4 Site infrastructure.....	11
2.4.1 <i>In-place</i> .....	11
2.5 Progress report on proposals developed to minimise water demand.....	12
2.6 PRTR Emission.....	12
3.0 Environmental objectives and targets – 2013. ....	13
3.1 Summary of reported incidents and complaints.....	15
3.1.1 <i>Reported Incidents Summary</i> .....	15
3.1.2 <i>Complaints:</i> .....	15
3.2 Review of nuisance controls .....	15

---

3.2.1 Odour .....	15
3.2.2 Noise .....	15
3.2.3 Dust .....	15
3.2.4 Vermin.....	15
3.2.5 Flies.....	16
3.2.6 Birds.....	16
3.2.7 Litter.....	16
4.0 Development of Procedures on Site.....	16
5.0 Pollution Emission Register.....	17
6.0 Report on Programme for Public Information .....	17
Appendix A.....	18
Appendix B.....	19
Appendix C.....	20

## **1.0 Introduction**

Panda were granted the EPA Waste Licence W0263-01 on the 26<sup>th</sup> January 2011. This replaces the Waste Permit WPR 021/2 issued by South Dublin County Council. Under this licence, Panda will be able to process initially 150,000 tonnes per annum. On the 27<sup>th</sup> of November 2015 section 76(11) amendment to Industrial Emissions Licence was issued to W0263-01 to be read in conjunction with original licence. Appendix A illustrates the current site layout.

### 1.1 Company details

Licence No: W0263-01

Name: Irish Packaging Recycling Ltd

Address: Ballymount Road,  
Walkinstown,  
Dublin 12.

Telephone Number: 01 4602011

Fax Number: 01 4602210

Website: [www.panda.ie](http://www.panda.ie)

### 1.2 Management Structure

There are 30 employees either working directly or indirectly at the facility. Appendix B illustrates the organisational structure of the facility.

### 1.3 Financial Provision

Costing's for both CRAMP and ELRA has been agreed with the Agency and the surety for financial provision is being considered by the Agency prior to implementation.

### 1.4 Environmental Policy

In carrying out our function, IPR/Panda acknowledge that our activities impact upon the environment both through routine internal operations and the actions of our staff.

It is Panda's policy to protect the environment during all activities, both on and off-site.

This is achieved by:

- Strategic preparation and implementation of operating procedures (including an emergency response procedure).
- Utilizing BAT (Best Available Technology).
- Actively promoting environmental awareness amongst staff and clients through appropriate training and communication programs.
- Reduce energy use through effective education and awareness and the installation of energy efficient technology where appropriate.
- Implementing a policy of continuous improvement, by means of targeted objectives. All objectives and targets are monitored and up-dated accordingly.

IPR/Panda are committed to complying with all relevant environmental regulations and aim to supply a safe competitive and sustainable service with specific regards to the surrounding environment.

### 1.5 Activities

Under the waste licence W0263-01, IPR conducts the following activities:

***Licensed Waste Recovery Activities, in accordance with the Fourth Schedule of the Waste Management Acts, 1996 to 2010***

**Class 2.**

Recycling or reclamation of organic substances which are not used as solvents (including composting and other biological processes) (P).

**Class 3.**

Recycling or reclamation of metals and metal compounds.

**Class 4.**

Recycling or reclamation of other inorganic materials.

**Class 13.**

Storage of waste intended for submission to any activity referred to in a preceding paragraph of this Schedule, other than temporary storage, pending collection, on the premises where such waste is produced.

IPR accept material from commercial and industrial sectors throughout Ireland. The normal facility operating hours are 6am-5pm (Monday-Friday) & 6am-2pm (Saturdays). The facility is licensed to accept non-hazardous wastes only.

### 1.6 Waste Activities carried out at the Facility

Material accepted and dispatched at the facility is weighed using Genesys weighbridge software. The facility is used as a baling station. The facility accepts predominantly source segregated paper, cardboard, plastic and hangers. No hazardous waste, putrescible waste or liquid wastes are accepted at the facility.

The material is initially sorted in the facility using Forklifts, Shovel and teleporters, then loaded into one of three balers for baling. The resultant bales are stored for onward movement.

There is a dual weighbridge for incoming and outgoing material.

**1.7 Water Usage:**

Water for dust suppression and fire fighting is taken from a holding tank located on a neighbouring paper premises. Water to the office and amenities is taken from municipal supply and is metered by the council.

Water usage in the facility consists of:

- Dust Suppression.
- Fire fighting

**2.0 Summary Information**

**2.1 Waste Received**

The waste received at the facility from the 1<sup>st</sup> January 2015 to the 31<sup>st</sup> December 2015 was 102,573.24 tonnes.

**Table 1.** Waste received in 2015

EWC Code	Waste Description	Tonnage
20 01 01	Paper and Cardboard	19,879.048
20 01 39	Plastic	327.941
20 03 01	MMW	616.64
15 01 01	Paper and Cardboard	71,421.17
15 01 02	Plastic Packaging	8,664.317
15 01 03	Wood	1,220.908
15 01 04	Steel	235.648
16 01 03	Used Tires	207.596

## 2.2 Waste Transferred Off-Site for Disposal or Recovery

See Appendix C (PRTR) for the breakdown of the different destinations used for the waste removed off site by EWC Code.

**Table 2:** Outgoing destination and recovery rate.

Destination	Tonnage	%
Disposal		0
Recovery	105,695.71	100

## 2.3 Summary report on emissions and interpretation of environmental monitoring

Under Schedule C of the licence W0263-01, IPR are required to monitor storm water emissions, noise and ambient air monitoring (Dust). The following sub-headings detail the results from independent laboratories of the different parameters and the emission limit values ELV's set by the EPA and any complaints and incident that may have occurred during the year.

### 2.3.1 Surface Water

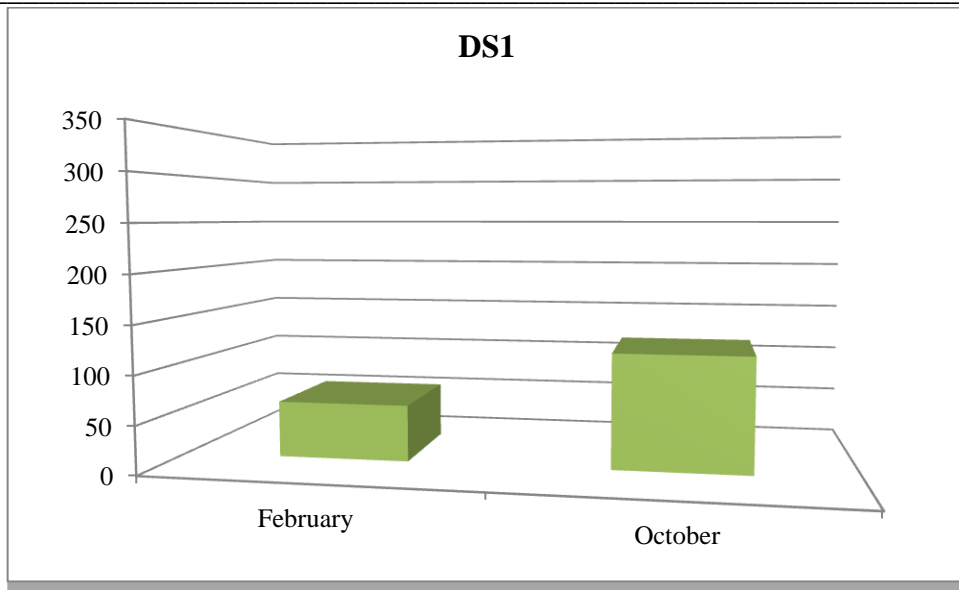
Storm water passes through a silt trap prior to being discharged to the stream to the South of the facility.

### 2.3.2 Dust Emissions

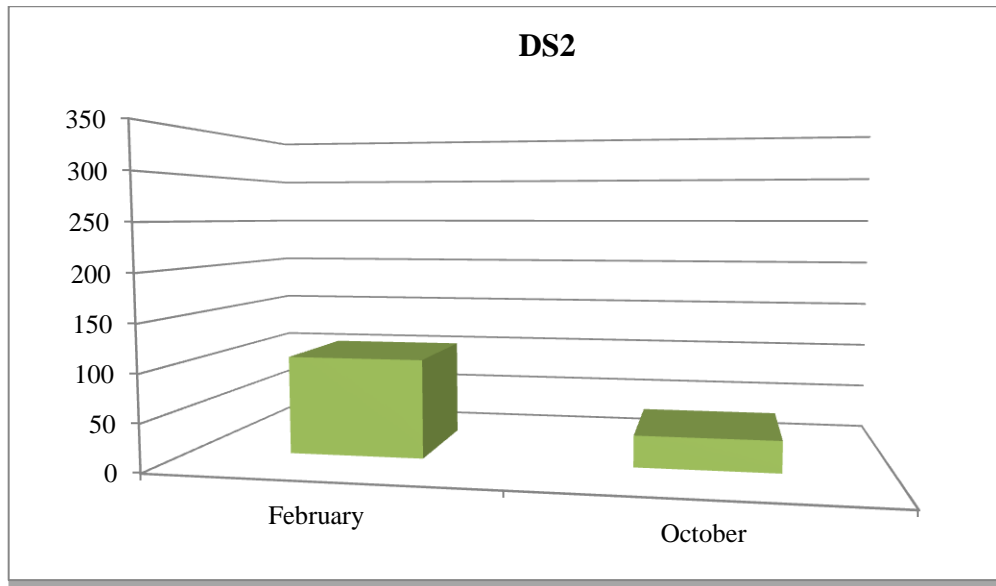
As per schedule B5 for dust deposition limits, there are currently three sampling locations (AD1, AD2 and AD3). Monitoring is required annually on site. Figs 1-3 illustrate dust recordings for 2015.

**Fig. 1:** Dust emission results for DS1 (AD1) in  $\text{mg m}^{-2} \text{d}^{-1}$

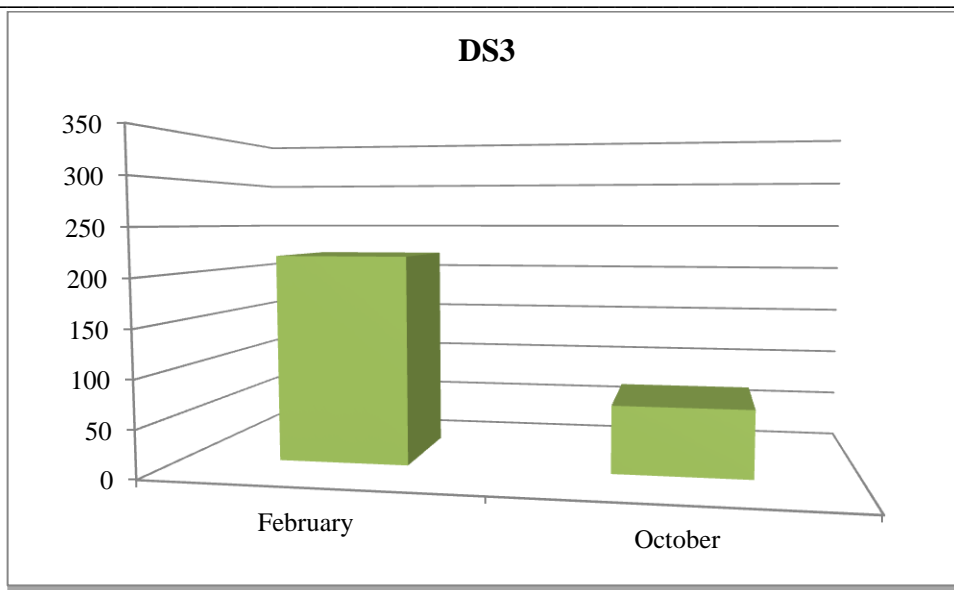




**Fig. 2:** Dust emission results for DS2 (AD2) in mg m<sup>-2</sup> d<sup>-1</sup>



**Fig. 3:** Dust emission results for DS3 (AD3) in mg m<sup>-2</sup> d<sup>-1</sup>



As per Schedule B.5, the dust deposition limit for the site is 350 mg m<sup>-2</sup> d<sup>-1</sup>. AD1, AD2 and AD3 are well within licenced ELV's.

**2.3.3 Noise Emissions**

Noise emissions are monitored according to Schedule B.4 and the emission limit values (ELV) set out in Schedule C.5 of the licence. An independent competent consultant was commissioned to conduct the noise sampling for the facility. Table 3 details results of noise monitoring conducted in 2015.

**Table 3:**

Noise Emissions 2015

Day – readings

Locn	Date	Time	Leq	Lmin	L10	L90	Comments
AN1	21 <sup>st</sup> Dec'15	16:20	59.4	48.8	62.5	56.1	Road traffic dominant at 53/54 dBA. Site truck going pass at 1.5m. site activity less than 54dBA.
AN2	21 <sup>st</sup> Dec'15	16:40	55.6	46.9	58.4	54.8	Site noise less than 52 dBA

Night - readings

Locn	Date	Time	Leq	Lmin	L10	L90	Comments
AN1	21 <sup>st</sup> Dec'15	22:10	55.5	47.8	58.1	48.8	Road traffic noise
AN2	21 <sup>st</sup> Dec'15	22:20	54.6	47.1	55.9	48.4	Road traffic noise

*2.3.4 Bund, pipe and underground storage tanks integrity*

AQS environmental solutions carried out pipeline integrity testing in September 2014.

Rowan Engineering carried out bund integrity testing in July 2013.

*2.3.5 Summary of resource and energy consumption*

**Table 4:** Summary of Energy Consumption from 1<sup>st</sup> January 2015 to December 2015.

Resource	Quantity
Diesel	79,630 litres
Electricity	600.228 MW hr

*2.3.6. Water*

Water is obtained from a shared holding tank and water for the office and amenities is obtained from the municipal water supply.

2.4 Site infrastructure

The following are details on infrastructure in the facility.

*2.4.1 In-place*

The current site infrastructure is outlined below (List 1). List 2 details the waste processing equipment used on site.

**List 1:** Current site infrastructure

1. Offices
2. Dual Weighbridge.
3. One x Waste processing building
4. One sprinkling system
5. Canteen & toilets.
6. Fuel Depot
10. Fencing around the site

**List 2: Waste processing equipment**

8 x Forklifts

1 x Multi-sweep attachment

1 x Teleporter

1 x Track machines

2 x Shovels

There is sufficient back up within the group if the forklifts, sweeper, shovel, track machine or the teleporter's break down.

**2.5 Progress report on proposals developed to minimise water demand**

Water usage is minimised on site due to the nature of the materials handled. Therefore there is no requirement to reduce water usage.

**2.6 PRTR Emission.**

IPR's PRTR emission return is provided in Appendix D.

**3.0 Environmental objectives and targets – 2016.**

No	Objective & Target	Method of Achievement	Responsibility	Timescale	Complete in 2016
1	<b>Assess the Effectiveness of Nuisance Control Procedures</b>	Continually review and assess all nuisance control procedures to ensure minimal impact on surrounding area	Facility Manager	Ongoing	Continuous
		Ensure yards are cleaned at the end of each working day	Operatives	Ongoing	Continuous
2	<b>Prevent Water Pollution from Run-Off</b>	Surface Water plug to be checked weekly	Facility Manager	Ongoing	Continuous
		Ensure all gullies are maintained and regularly cleaned	Facility Manager/ Operatives	Ongoing	Continuous
		Pipeline Integrity test to be completed	Facility Manager	September 2014	Complete
		Install Class I full retention separator	Facility Manager	Feb 2013	Complete
		A bund integrity test is to be completed.	Facility Manager	August 2013	August 2016
3	<b>Maintain and Develop the Environmental Management System</b>	Maintain EMS Documentation on site	Facility Manager/ Env Dept	Continuous	Continuous
		Up date procedures to reflect operational and control changes	Facility Manager/ Env Dept	Continuous	Continuous

4	<b>Assess Waste Acceptance Procedures so as to minimise volume of erratics</b>	Communicate with customers about the items that are not acceptable in the in-coming wastes	Facility Manager/ Sales Reps	Continuous	Continuous
5	<b>Environmental Monitoring</b>	Implement the Environmental Monitoring Programme specified in the Waste Licence	Facility Manager	Continuous	Continuous
		Investigate any accidents of emission limit values	Facility Manager	Continuous	Continuous
6	<b>Ensure and implement a training programme</b>	Identify staff training requirements and provide relevant training	Facility Manager/ Env Dept	Continuous	Continuous
7	<b>To control any emergencies that may arise at the facility</b>	Review and Update the Emergency Response Procedure	Facility Manager/ Env Dept	Jan 2016	Complete
8	<b>Prepare a Standard Operating Procedures Manual</b>	Update the SOP manual relevant to site operations	Facility Manager/ Env Dept	Continuous	Continuous
9	<b>Ensure lighting in waste handling buildings provide sufficient lighting so as to assess incoming waste</b>	Clean all light fittings in waste handling buildings	Environmental Manager/ Yard Supervisor	May 2016	Not Complete
10	<b>Office Recycling</b>	Implement office recycling	Office Manager/ Environmental Department	Continuous	Continuous
		Continuation of training regarding office recycling	Office Manager/ Environmental Department	Continuous	Continuous
11	<b>Fire Detection</b>	To reduce the risk from fire in the facility – Link Sprinkler system into monitored alarm panel.	Facility Manager	2015	complete

### 3.1 Summary of reported incidents and complaints

#### *3.1.1 Reported Incidents Summary*

No incidents occurred during this licence in 2015.

#### *3.1.2 Complaints:*

No complaints occurred during this licence in 2015.

### 3.2 Review of nuisance controls

#### *3.2.1 Odour*

There is minimal risk of odour nuisance due to the nature of the waste accepted at the facility. However, IPR's in house Multi-sweeper cleans the concreted yard routinely throughout the day.

#### *3.2.2 Noise*

The monitoring results showed that noise is not a nuisance, as only bobcats, teleporters and forklifts are operational on site.

#### *3.2.3 Dust*

A dust suppression system is installed in the shed and on the external (South-western side) of the building. The Multi-sweeper is frequently used on all concreted yards. Fire hoses are also available to spray water on concreted yards as required.

#### *3.2.4 Vermin*

A file on vermin control is maintained in the office. A sub-contractor is used to control any vermin on site.

### *3.2.5 Flies*

Good housekeeping practices are used to prevent fly infestations. The yard is kept clean using a road sweeper and all waste for disposal is removed from the facility within 48 hours, or 72 hours in the case of a bank holiday weekends.

### *3.2.6 Birds*

In order to avoid having birds as a nuisance, litter control is practised at all times, this includes regular litter patrols. Birds are not attracted, due to the nature of the material handled on site.

### *3.2.7 Litter*

A designated member of staff carries out litter inspections of the facility regularly and gathers any litter deposited. The yard is kept clean using a Mutli-sweeper

## **4.0 Development of Procedures on Site**

The Environmental Management System has been developed and includes the following Standard Operating Procedure;

- Corrective Action;
- Daily Site Inspections;
- Nuisance Management;
- Emergency Response;
- Unacceptable Waste;
- Communications Programme;
- Storage of Fuels and Oils;
- Training and Awareness;
- Environmental Complaints;



A Daily Site Inspection Sheet has been developed to record any potential nuisance on or points to note including a map of the facility for reference as to the location of the nuisance.

### **5.0 Pollution Emission Register**

After consulting the PERL list IPR are not using any substance that is listed at present.

### **6.0 Report on Programme for Public Information**

IPR have a shared website with their sister company Panda. The website was recently re-developed; one of the features is an Environmental page where the following can be downloaded,

- Facility licences (W0140-03, W0261-01, **W0263-01**)
- Multi-regional Waste collection permit (NWCPO-14-11326-02),
- Environmental Policy,

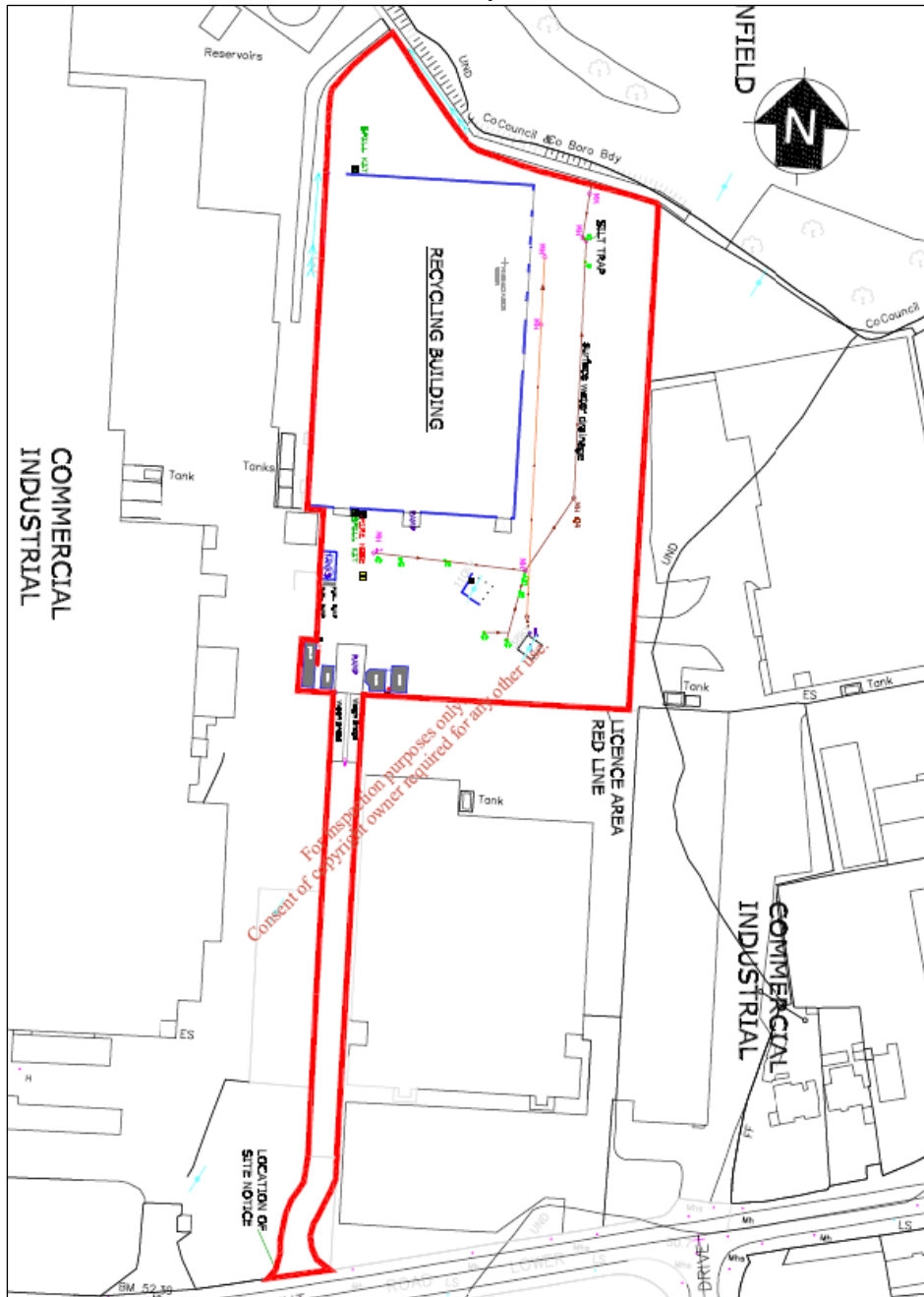
Recycling certificates are issued to customers, on request, so that they can determine their recycling on a monthly basis.

During the reporting period there were no requests from members of the public to inspect any Environmental Records.

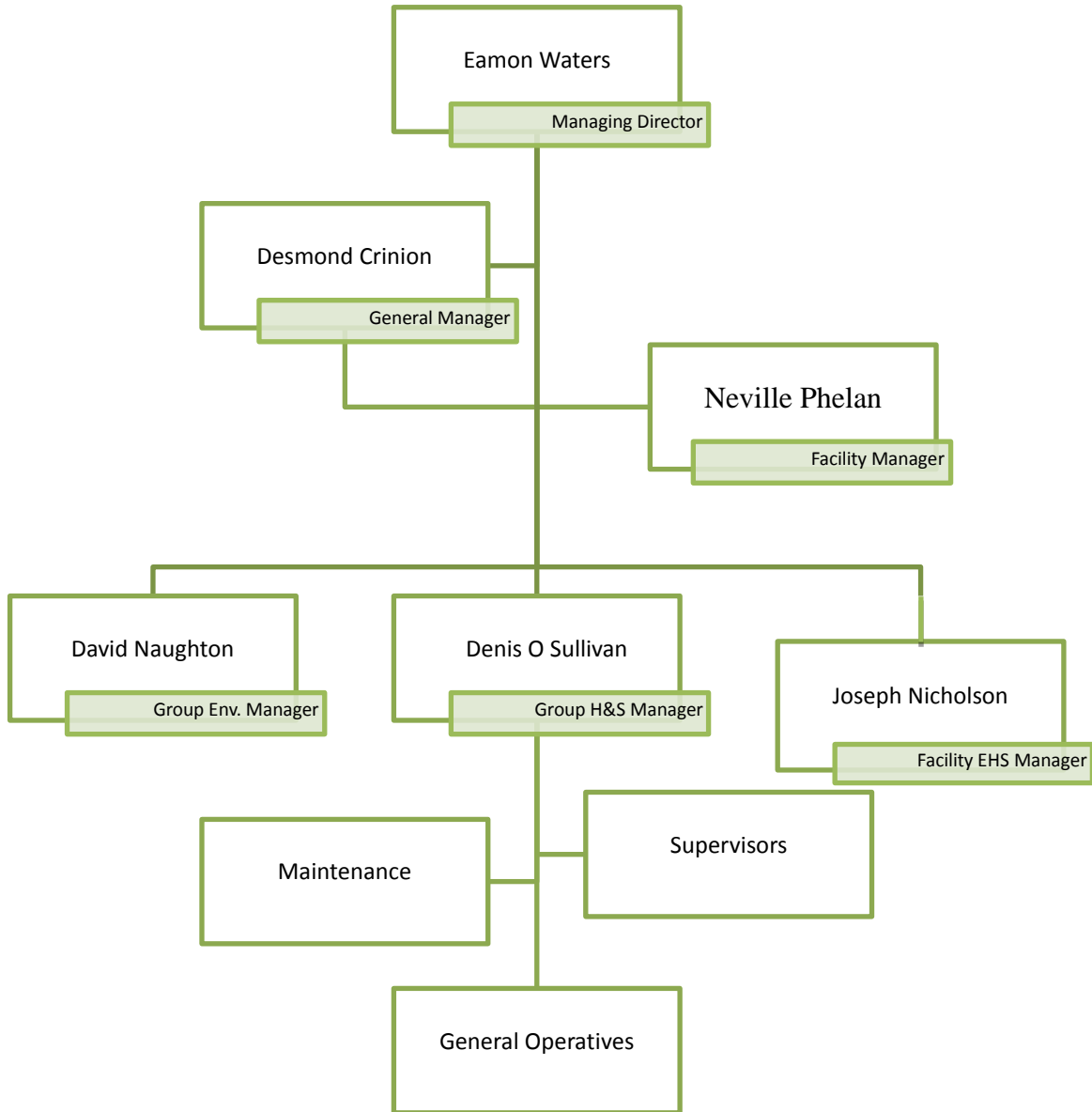
The information in the Annual Environmental Report is true and accurate representation of the activities conducted by IPR in 2015.

# Appendix A

Site Layout



## Appendix B



## Appendix D

PRTR



[Guidance to completing the PRTR workbook](#)

## PRTR Returns Workbook

Version 1.1.19

<b>REFERENCE YEAR</b>	2015
-----------------------	------

### 1. FACILITY IDENTIFICATION

Parent Company Name	Irish Packaging Recycling
Facility Name	Irish Packaging Recycling
PRTR Identification Number	W0263
Licence Number	W0263-01

#### Classes of Activity

No.	class name
-	Refer to PRTR class activities below

Address 1	Ballymount Road
Address 2	Walkinstown
Address 3	Dublin 12
Address 4	
	Dublin
Country	Ireland
Coordinates of Location	-6.34193 53.31824
River Basin District	IEEA
NACE Code	3832
Main Economic Activity	Recovery of sorted materials
<b>AER Returns Contact Name</b>	Joe Nicholson
<b>AER Returns Contact Email Address</b>	joe.nicholson@ipr.ie
<b>AER Returns Contact Position</b>	EHS Manager
<b>AER Returns Contact Telephone Number</b>	0860226109
<b>AER Returns Contact Mobile Phone Number</b>	0860226109
<b>AER Returns Contact Fax Number</b>	
<b>Production Volume</b>	0.0
<b>Production Volume Units</b>	
<b>Number of Installations</b>	0
<b>Number of Operating Hours in Year</b>	0
<b>Number of Employees</b>	25
<b>User Feedback/Comments</b>	
<b>Web Address</b>	www.panda.ie

### 2. PRTR CLASS ACTIVITIES

Activity Number	Activity Name
50.1	General

### 3. SOLVENTS REGULATIONS (S.I. No. 543 of 2002)

Is it applicable?	
Have you been granted an exemption ?	
If applicable which activity class applies (as per Schedule 2 of the regulations) ?	
Is the reduction scheme compliance route being used ?	

### 4. WASTE IMPORTED/ACCEPTED ONTO SITE

[Guidance on waste imported/accepted onto site](#)

Do you import/accept waste onto your site for on-site treatment (either recovery or disposal activities) ?	
--	--

This question is only applicable if you are an IPPC or Quarry site

4.1 RELEASES TO AIR

[Link to previous years emissions data](#)

| PRTR#: W0263 | Facility Name : Irish Packaging Recycling | Filename : AER - PRTR - W0263\_2015.xls | Return Year : 2015 |

16/03/2016 12:13

SECTION A : SECTOR SPECIFIC PRTR POLLUTANTS

RELEASES TO AIR					Please enter all quantities in this section in KGs			
POLLUTANT		METHOD			ADD EMISSION POINT	QUANTITY		
No. Annex II	Name	M/C/E	Method Code	Designation or Description	Emission Point 1	T (Total) KG/Year	A (Accidental) KG/Year	F (Fugitive) KG/Year
					0.0	0.0	0.0	0.0

ADD NEW ROW | DELETE ROW \*      \* Select a row by double-clicking on the Pollutant Name (Column B) then click the delete button

SECTION B : REMAINING PRTR POLLUTANTS

RELEASES TO AIR					Please enter all quantities in this section in KGs			
POLLUTANT		METHOD			ADD EMISSION POINT	QUANTITY		
No. Annex II	Name	M/C/E	Method Code	Designation or Description	Emission Point 1	T (Total) KG/Year	A (Accidental) KG/Year	F (Fugitive) KG/Year
					0.0	0.0	0.0	0.0

ADD NEW ROW | DELETE ROW \*      \* Select a row by double-clicking on the Pollutant Name (Column B) then click the delete button

SECTION C : REMAINING POLLUTANT EMISSIONS (As required in your Licence)

RELEASES TO AIR					Please enter all quantities in this section in KGs					
POLLUTANT		METHOD			ADD EMISSION POINT	QUANTITY				
Pollutant No.	Name	M/C/E	Method Code	Designation or Description	Emission Point 1	Emission Point 2	Emission Point 3	T (Total) KG/Year	A (Accidental) KG/Year	F (Fugitive) KG/Year
					0.03	0.03	0.05	0.16	0.05	0.0

ADD NEW ROW | DELETE ROW \*      \* Select a row by double-clicking on the Pollutant Name (Column B) then click the delete button

4.2 RELEASES TO WATERS

[Link to previous years emissions data](#)

| PRTR#: W0263 | Facility Name : Irish Packaging Recycling | Filename : AER - PRTR - W0263\_2015.xls | Return Year : 2015 |

16/03/2016 12:13

**SECTION A : SECTOR SPECIFIC PRTR POLLUTANTS**

Data on ambient monitoring of storm/surface water or groundwater, conducted as part of your licence requirements, should NOT be submitted under AER/ PRTR

RELEASES TO WATERS					Please enter all quantities in this section in KGs			
POLLUTANT		Method Used			ADD EMISSION POINT	QUANTITY		
No. Annex II	Name	M/C/E	Method Code	Designation or Description	Emission Point 1	T (Total) KG/Year	A (Accidental) KG/Year	F (Fugitive) KG/Year
					0.0	0.0	0.0	0.0

ADD NEW ROW    DELETE ROW \*    \* Select a row by double-clicking on the Pollutant Name (Column B) then click the delete button

**SECTION B : REMAINING PRTR POLLUTANTS**

RELEASES TO WATERS					Please enter all quantities in this section in KGs			
POLLUTANT		Method Used			ADD EMISSION POINT	QUANTITY		
No. Annex II	Name	M/C/E	Method Code	Designation or Description	Emission Point 1	T (Total) KG/Year	A (Accidental) KG/Year	F (Fugitive) KG/Year
					0.0	0.0	0.0	0.0

ADD NEW ROW    DELETE ROW \*    \* Select a row by double-clicking on the Pollutant Name (Column B) then click the delete button

**SECTION C : REMAINING POLLUTANT EMISSIONS (as required in your Licence)**

RELEASES TO WATERS					Please enter all quantities in this section in KGs			
POLLUTANT		Method Used			ADD EMISSION POINT	QUANTITY		
Pollutant No.	Name	M/C/E	Method Code	Designation or Description	Emission Point 1	T (Total) KG/Year	A (Accidental) KG/Year	F (Fugitive) KG/Year
					0.0	0.0	0.0	0.0

ADD NEW ROW    DELETE ROW \*    \* Select a row by double-clicking on the Pollutant Name (Column B) then click the delete button



4.3 RELEASES TO WASTEWATER OR SEWER

[Link to previous years emissions data](#)

| PRTR#: W0263 | Facility Name: Irish Packaging Recycling | Filename: AER - PRTR - W0263\_2 16/03/2016 12:13

SECTION A : PRTR POLLUTANTS

OFFSITE TRANSFER OF POLLUTANTS DESTINED FOR WASTE-WATER TREATMENT OR SEWER					Please enter all quantities in this section in KGs			
POLLUTANT		METHOD			ADD EMISSION POINT	QUANTITY		
No. Annex II	Name	M/C/E	Method Used		Emission Point 1	T (Total) KG/Year	A (Accidental) KG/Year	F (Fugitive) KG/Year
			Method Code	Designation or Description				
					0.0	0.0	0.0	0.0

ADD NEW ROW DELETE ROW \* \* Select a row by double-clicking on the Pollutant Name (Column B) then click the delete button

SECTION B : REMAINING POLLUTANT EMISSIONS (as required in your Licence)

OFFSITE TRANSFER OF POLLUTANTS DESTINED FOR WASTE-WATER TREATMENT OR SEWER					Please enter all quantities in this section in KGs			
POLLUTANT		METHOD			ADD EMISSION POINT	QUANTITY		
Pollutant No.	Name	M/C/E	Method Used		Emission Point 1	T (Total) KG/Year	A (Accidental) KG/Year	F (Fugitive) KG/Year
			Method Code	Designation or Description				
					0.0	0.0	0.0	0.0

ADD NEW ROW DELETE ROW \* \* Select a row by double-clicking on the Pollutant Name (Column B) then click the delete button

4.4 RELEASES TO LAND

[Link to previous years emissions data](#)

| PRTR#: W0263 | Facility Name : Irish Packaging Recycling | Filename : AER - PRTR - W0263\_2015.xls | Return Year : 2015 |

16/03/2016 12:13

SECTION A : PRTR POLLUTANTS

RELEASES TO LAND					Please enter all quantities in this section in KGs		
POLLUTANT		METHOD			ADD EMISSION POINT	QUANTITY	
No. Annex II	Name	M/C/E	Method Used		Emission Point 1	T (Total) KG/Year	A (Accidental) KG/Year
			Method Code	Designation or Description			
					0.0	0.0	0.0
ADD NEW ROW		DELETE ROW *		* Select a row by double-clicking on the Pollutant Name (Column B) then click the delete button			

SECTION B : REMAINING POLLUTANT EMISSIONS (as required in your Licence)

RELEASES TO LAND					Please enter all quantities in this section in KGs		
POLLUTANT		METHOD			ADD EMISSION POINT	QUANTITY	
Pollutant No.	Name	M/C/E	Method Used		Emission Point 1	T (Total) KG/Year	A (Accidental) KG/Year
			Method Code	Designation or Description			
					0.0	0.0	0.0
ADD NEW ROW		DELETE ROW *		* Select a row by double-clicking on the Pollutant Name (Column B) then click the delete button			

5. ONSITE TREATMENT & OFFSITE TRANSFERS OF WASTE

| PRTR#: W0263 | Facility Name : Irish Packaging Recycling | Filename : AER - PRTR - W0263\_2015.xls | Return Year : 2015 |

16/03/2016 12:13

Please enter all quantities on this sheet in Tonnes

0

Transfer Destination	European Waste Code	Hazardous	Quantity (Tonnes per Year)	Description of Waste	Waste Treatment Operation	Method Used		Location of Treatment	Haz Waste : Name and Licence/Permit No of Next Destination Facility Non Haz Waste: Name and Licence/Permit No of Recoverer/Disposer	Haz Waste : Address of Next Destination Facility Non Haz Waste: Address of Recoverer/Disposer	Name and License / Permit No. and Address of Final Recoverer / Disposer (HAZARDOUS WASTE ONLY)	Actual Address of Final Destination i.e. Final Recovery / Disposal Site (HAZARDOUS WASTE ONLY)
						M/C/E	Method Used					
To Other Countries	15 01 01	No	7144.3	paper and cardboard packaging	R12	M	Weighed	Abroad	Agnail Ltd,Broker	88 Cherrywood Crescent, Clondalkin, Dublin 22, ,Ireland		
To Other Countries	15 01 01	No	121.16	paper and cardboard packaging	R12	M	Weighed	Abroad	Boost Recycling Ltd,Broker	47 Swaffham Road, Burwell, Cambridgeshire, CB25 0AN, United Kingdom		
To Other Countries	15 01 01	No	101.6	paper and cardboard packaging	R12	M	Weighed	Abroad	Huhtamaki Lurgan Ltd,Broker - Netherlands	41 Inn Road, Dollingstown, Craigavon, BT667JN, United Kingdom		
To Other Countries	15 01 01	No	9630.11	paper and cardboard packaging	R12	M	Weighed	Abroad	Mark Lyndon Paper Ent Uk Ltd,Broker - China	12 The Triangle, Nottingham, ,NG2 1AE, United Kingdom		
To Other Countries	15 01 01	No	10021.41	paper and cardboard packaging	R12	M	Weighed	Abroad	Marwin Environmental Trading Ltd,Broker - India	7 Glyntown Heights, Glanmire, Co. Cork, ,Ireland		
To Other Countries	15 01 01	No	5895.72	paper and cardboard packaging	R12	M	Weighed	Abroad	Midland Waste,Broker - China	Proudstown Road, Navan, Co. Meath, ,Ireland		
To Other Countries	15 01 01	No	12468.26	paper and cardboard packaging	R12	M	Weighed	Abroad	MLM Ltd,Broker - China	Adamson House, Towers Business Park, Wilmlov Rd Didsbury Manchester, M20 2YY, United Kingdom		
To Other Countries	15 01 01	No	1011.28	paper and cardboard packaging	R12	M	Weighed	Abroad	PT Pabrick Kertas Indonesia Pakerin,Broker/Mill - Indonesia	JL Kertopaten No. 3, Surabaya 60145, East Java, ,Indonesia		
To Other Countries	15 01 01	No	251.58	paper and cardboard packaging	R12	M	Weighed	Abroad	PT Surabaya Meta Box,Broker/Mill - Indonesia	JL Bongkaran 64 - 66, PO box 1061 SBY 60010, Surabaya, ,Indonesia		
Within the Country	15 01 01	No	223.18	paper and cardboard packaging	R12	M	Weighed	Offsite in Ireland	Rebox ,Exempt	2B Kylemore Ind Est, Ballyfermot, Dublin 10, ,Ireland		
Within the Country	15 01 01	No	2.3	paper and cardboard packaging	R12	M	Weighed	Offsite in Ireland	ReCreate Ireland, Exempt - Charity	Block K8, Ballymount Industrial Estate, Dublin, D12, Ireland		

To Other Countries	15 01 01	No	122.78	paper and cardboard packaging	R12	M	Weighted	Abroad	Recycling UK Ltd,Broker/China	10 portal business park ,Eaton Lane Tarporley,,Cheshire,CW6 9DL,united kingdom York Street Mill,Audenshaw,Manchester M345TN,United Kingdom
To Other Countries	15 01 01	No	3076.04	paper and cardboard packaging	R12	M	Weighted	Abroad	Saica Natur,Broker - UK	543 Hythe Lane,Larkfield Aylesford,Kent,M320 7PE,United Kingdom
To Other Countries	15 01 01	No	11505.5	paper and cardboard packaging	R12	M	Weighted	Abroad	Sca.Emd Recycling,Broker - China	Ballymount road,Walkinstown,Dublin,,Ireland
To Other Countries	15 01 01	No	279.36	paper and cardboard packaging	R12	M	Weighted	Abroad	Smurfit Recycling,Broker - India	
To Other Countries	15 01 01	No	5400.14	paper and cardboard packaging	R12	M	Weighted	Abroad	Vipa Luasanna S.A,Broker / India	Gaeries Benjamin Constan 1,Case Postable 7700 1002 ,Lausanne,,Switzerland
To Other Countries	15 01 01	No	485.64	paper and cardboard packaging	R12	M	Weighted	Abroad	Wuxi Longchem Paper Co Ltd,Broker / Mill - China	43 Zhongxing West Rd,Loushe Town,Huishan District Wuxi,Jiangsu,China
To Other Countries	15 01 01	No	1483.56	paper and cardboard packaging	R12	M	Weighted	Abroad	Zhongsan Rengo Hung Hing Paper Manufacturing Company,Broker / Mill - China	105 national highway west side of Zhongsan ,San Qiao Shaxi Town,Zhongsan ,China In Zhongsan Sugar Factory,Huangpu Town,Zhongsan City,,China
To Other Countries	15 01 01	No	7061.23	paper and cardboard packaging	R12	M	Weighted	Abroad	Zhongsan Yongfa Paper Industries Co Ltd,Broker / Mill - China	88 Cherrywood Crescent,Clondalkin,Dublin 22,,Ireland
To Other Countries	15 01 02	No	532.06	plastic packaging	R12	M	Weighted	Abroad	Agnail Ltd,Broker	47 Swaffham Road,Burwell,Cambridgeshire,CB25 0AN,United Kingdom
To Other Countries	15 01 02	No	77.6	plastic packaging	R12	M	Weighted	Abroad	Boost Recycling Ltd,Broker	Logix Road R D park,,Hinckley,LE103BQ,United Kingdom
To Other Countries	15 01 02	No	102.74	plastic packaging	R12	M	Weighted	Abroad	Eurokey Recycling Ltd.,Broker	
Within the Country	15 01 02	No	455.917	plastic packaging	R12	M	Weighted	Offsite in Ireland	Leinster Environmental,Wp 2004/03 Leinster	Dundalk,Co. Louth,,Ireland
To Other Countries	15 01 02	No	342.26	plastic packaging	R12	M	Weighted	Abroad	Environmental,Broker	Dundalk,Co. Louth,,Ireland 7 Glyntown Heights,Glanmire,Co. Cork,,Ireland
To Other Countries	15 01 02	No	24.82	plastic packaging	R12	M	Weighted	Abroad	Marwin Environmental Trading Ltd,Broker - India	Adamson House,Towers Business Park,Wilmov Rd Didsbury Manchester,M20 2YY,United Kingdom
To Other Countries	15 01 02	No	889.94	plastic packaging	R12	M	Weighted	Abroad	MLM Ltd,Broker - China	Kipper House,Scilly,Kinsale,Co.Cork,Ireland
Within the Country	15 01 02	No	151.51	plastic packaging	R12	M	Weighted	Offsite in Ireland	Materia Environment Ltd.,Broker	Rushden Road,Sharnbrook,Bedfordshire,MK44IND,United Kingdom
To Other Countries	15 01 02	No	148.16	plastic packaging	R12	M	Weighted	Abroad	Monoworld Ltd,Broker - UK	

Within the Country	1 02	No	20.92 plastic packaging	R12	M	Weighed	Offsite in Ireland	MIND QTLS Ltd.,WFP/WW/14/0033/01	Unit 7 Charvey Lane,Charvey Lane,Rathnew,Co. Wicklow,Ireland
To Other Countries	15 01 02	No	1922.19 plastic packaging	R12	M	Weighed	Abroad	Peute Recycling BV,Broker - Netherlands	Baanhoekweg 4,3313 La Dordrecht,...,Netherlands
Within the Country	15 01 02	No	5.18 plastic packaging	R12	M	Weighed	Offsite in Ireland	Irish Packaging Recycling - MRF,W0238-01	Est.,Ballymount road,Tallaght,D.22,Ireland
To Other Countries	15 01 02	No	123.36 plastic packaging	R12	M	Weighed	Abroad	RBD Plastics GmbH,Broker / Germany	Nortorfor Str. 2,24613 Aukrug,...,Germany
Within the Country	15 01 02	No	15.2 plastic packaging	R12	M	Weighed	Offsite in Ireland	Panda Waste Services,W0140-03	Beauparc Business Park,Navan,..Co. Meath,Ireland
Within the Country	15 01 02	No	4.8 plastic packaging	R12	M	Weighed	Offsite in Ireland	ReCreate Ireland,Exempt - Charity	Block K8,Ballymount Industrial Estate,Dublin,D12,Ireland
To Other Countries	15 01 02	No	3082.85 plastic packaging	R12	M	Weighed	Abroad	Vanden Global Ltd,Broker	Unit 807 8/F Mackennycentre,660 Castel Peak road,Kowloon,..,Hong Kong
To Other Countries	15 01 02	No	262.04 plastic packaging	R12	M	Weighed	Abroad	WRC Recycling,Broker - UK	Auchans Farm,Johnstone,Renfrewshire,PA6 7EE, United Kingdom
To Other Countries	15 01 03	No	3.12 wooden packaging	R12	M	Weighed	Abroad	Agnail Ltd,Broker	88 Cherrywood Crescent,Clondalkin,Dublin 22,..,Ireland
Within the Country	15 01 03	No	17.96 wooden packaging	R12	M	Weighed	Offsite in Ireland	Leinster Environmental,Wp 2004/03	Dundalk,Co. Louth,...,Ireland
Within the Country	15 01 03	No	11.26 wooden packaging	R12	M	Weighed	Offsite in Ireland	Materia Environment Ltd.,TBC	Kipper House,Scilly,Kinsale,Co.Cork,Ireland
Within the Country	15 01 03	No	1360.03 wooden packaging	R12	M	Weighed	Offsite in Ireland	TD Freight Ltd,Broker	Tullycara,Castleblaney,Co. Monaghan,..,Ireland
Within the Country	15 01 04	No	6.44 metallic packaging	R12	M	Weighed	Offsite in Ireland	St Margarets Recycling and Transfer centre Ltd,WFP-FG-13-0002-01	Sandyhills,St. Margarets,Dublin,..,Ireland

To Other Countries	1 04	No	148.84 metallic packaging	R12	M	Weighed	Abroad	Wilton Waste Recycling Ltd.,WFP-CN-01-000-05-01	Kiffa Crosserlough,Ballyjamesduff ,Cavan,,Ireland
To Other Countries	15 01 04	No	21.92 metallic packaging	R12	M	Weighed	Abroad	WRC Recycling,Broker - UK	Auchans Farm,Johnstone,Renfrewshire,PA6 7EE,United Kingdom
To Other Countries	16 01 03	No	200.52 end-of-life tyres	R12	M	Weighed	Abroad	Agnail Ltd,Broker	88 Cherrywood Crescent,Clondalkin,Dublin 22,,Ireland
Within the Country	16 01 03	No	6.52 end-of-life tyres	R12	M	Weighed	Offsite in Ireland	Crumb Rubber Ireland Ltd,WFP-LH-10-0005-01	Mooretown Domiskin ,Dundalk,Louth,,Ireland
Within the Country	20 01 38	No	109.2 wood other than that mentioned in 20 01 37	R12	M	Weighed	Offsite in Ireland	Panda Waste Services,W0039-02	Ballymount Cross,Tallaght,Dublin 24,,Ireland
To Other Countries	20 01 01	No	1984.22 paper and cardboard	R12	M	Weighed	Abroad	Agnail Ltd,Broker	88 Cherrywood Crescent,Clondalkin,Dublin 22,,Ireland
To Other Countries	20 01 01	No	278.98 paper and cardboard	R12	M	Weighed	Abroad	Boost Recycling Ltd,Broker	47 Swaffham Road,Burwell,Cambridgeshire,CB25 0AN,United Kingdom
To Other Countries	20 01 01	No	283.9 paper and cardboard	R12	M	Weighed	Abroad	Huhtamaki Lurgan Ltd,Broker - Netherlands	41 Inn Road,Dollingstown,Craigavon,BT667JN,United Kingdom
To Other Countries	20 01 01	No	916.52 paper and cardboard	R12	M	Weighed	Abroad	Huhtamaki Lurgan Ltd,broker - UK	41 Inn Road,Dollingstown,Craigavon,BT667JN,United Kingdom
Within the Country	20 01 01	No	1245.2 paper and cardboard	R12	M	Weighed	Offsite in Ireland	Kimberly Clark Ltd,Mill - UK	Northfleet Mill Crate Hall road ,Gravesend,Kent,DA119AD,United Kingdom
To Other Countries	20 01 01	No	75.8 paper and cardboard	R12	M	Weighed	Abroad	Mark Lyndon Paper Ent Uk Ltd,Broker - China	12 The Triangle,Nottingham,,NG2 1AE,United Kingdom
To Other Countries	20 01 01	No	681.28 paper and cardboard	R12	M	Weighed	Abroad	Marwin Environmental Trading Ltd,Broker - India	7 Glyntown Heights,Glanmire,Co. Cork,,Ireland

To Other Countries	20 01 01	No	4100.38 paper and cardboard	R12	M	Weighed	Abroad	Northwood Recycling Limited, Broker - UK	Grant House, Stafford Park 12, Telford, TF33BJ, United Kingdom
Within the Country	20 01 01	No	18.02 paper and cardboard	R12	M	Weighed	Offsite in Ireland	Panda Waste Services, W0140-03	Beauparc Business Park, Navan, Co. Meath, Ireland
To Other Countries	20 01 01	No	6.615 paper and cardboard	R12	M	Weighed	Abroad	Paperman Products, WMX19/41	Rathdown Cl Lissue Ind Est, Moira Road, Lisburn Co Antrim, BT28 2RB, United Kingdom
To Other Countries	20 01 01	No	376.02 paper and cardboard	R12	M	Weighed	Abroad	Peute Recycling BV, Broker - Netherlands	Baanhoekweg 4, 3313 La Dordrecht, Co., Netherlands
To Other Countries	20 01 01	No	177.36 paper and cardboard	R12	M	Weighed	Abroad	Saica Natur, Broker - UK	York Street Mill, Audenshaw, Manchester, M345TN, United Kingdom
To Other Countries	20 01 01	No	3144.7 paper and cardboard	R12	M	Weighed	Abroad	Sca.Emd Recycling, Broker	543 Hythe Lane, Larkfield Aylesford, Kent, M320 7PE, United Kingdom
To Other Countries	20 01 01	No	200.0 paper and cardboard	R12	M	Weighed	Abroad	Shred it, Broker - UK	Unit 1 A Kileen Industrial Park, Kileen Road, Dublin 10, Ireland
To Other Countries	20 01 01	No	4140.8 paper and cardboard	R12	M	Weighed	Abroad	Vipa Luasanna S.A, Broker	Gaeries Benjamin Constan 1, Case Postable 7700 1002, Lausanne, Switzerland
Within the Country	20 01 36	No	discarded electrical and electronic equipment other than those mentioned in 20 01 21, 20 01 23 and 20 01 35 1.06	R12	M	Weighed	Offsite in Ireland	KMK Metals Recycling Ltd., WCP-OY-0607-01	Cappincur Ind Est., Daingean Rd., Tullamore, Co. Offaly, Ireland
To Other Countries	20 01 39	No	103.72 plastics	R12	M	Weighed	Abroad	Agnail Ltd, Broker	88 Cherrywood Crescent, Clondalkin, Dublin 22, Ireland
Within the Country	20 01 39	No	186.2 plastics	R12	M	Weighed	Offsite in Ireland	Leinster Environmental, Wp 2004/03	Dundalk, Co. Louth, Ireland Unit 807 8/F
To Other Countries	20 01 39	No	3.4 plastics	R12	M	Weighed	Abroad	Vanden Global Ltd, Broker	Mackennycentre, 660 Castel Peak road, Kowloon, Hong Kong

To Other Countries	20 01 39	No	21.62 plastics	R12	M	Weighed	Abroad	WRC Recycling, Broker - UK	Auchans Farm, Johnstone, Renfrewshire, PA6 7EE, United Kingdom
To Other Countries	20 01 39	No	36.48 plastics	R12	M	Weighed	Abroad	Marwin Environmental Trading Ltd, Broker - India	7 Glyntown Heights, Glanmire, Co. Cork, Ireland
To Other Countries	20 03 01	No	1.16 mixed municipal waste	R12	M	Weighed	Abroad	Agnail Ltd, Broker	88 Cherrywood Crescent, Clondalkin, Dublin 22, Ireland
Within the Country	20 03 01	No	56.84 mixed municipal waste	R12	M	Weighed	Offsite in Ireland	Greyhound - "OWN MATERIAL", W0205-01	Crag Avenue, Clondalkin, Dublin 22, Ireland
To Other Countries	20 03 01	No	43.3 mixed municipal waste	R12	M	Weighed	Abroad	Midland Waste, Broker - China	Proudstown Road, Navan, Co. Meath, Ireland
Within the Country	20 03 01	No	137.14 mixed municipal waste	R12	M	Weighed	Offsite in Ireland	SDCC Bailing Station, 03	Ballymount rd, walkinstown, dublin, d.12, Ireland
Within the Country	20 03 01	No	232.08 mixed municipal waste	R12	M	Weighed	Offsite in Ireland	Panda Waste Services, W0140-03	Beauparc Business Park, Navan, Co. Meath, Ireland
Within the Country	20 03 01	No	910.408 mixed municipal waste	R12	M	Weighed	Offsite in Ireland	Panda Waste Services, W0039-02	Ballymount Cross, Tallaght, Dublin 24, Ireland

ADD NEW ROW

DELETE ROW \*

\* Select a row by double-clicking the Description of Waste then click the delete button