



- NOTES:**
1. This drawing is the property of Cork County Council. It is a confidential document and must not be copied, used, or its content divulged without prior written consent.
 2. Includes Ordnance Survey Ireland data reproduced under OSI Licence number: Cork County Council CCMA 2004/07. Unauthorised reproduction infringes Ordnance Survey Ireland and Government of Ireland copyright, © Ordnance Survey Ireland, 2004.
 3. All levels refer to Ordnance Survey Datum, Malin Head.
 4. DO NOT SCALE, use figured dimensions only, if in doubt ask.



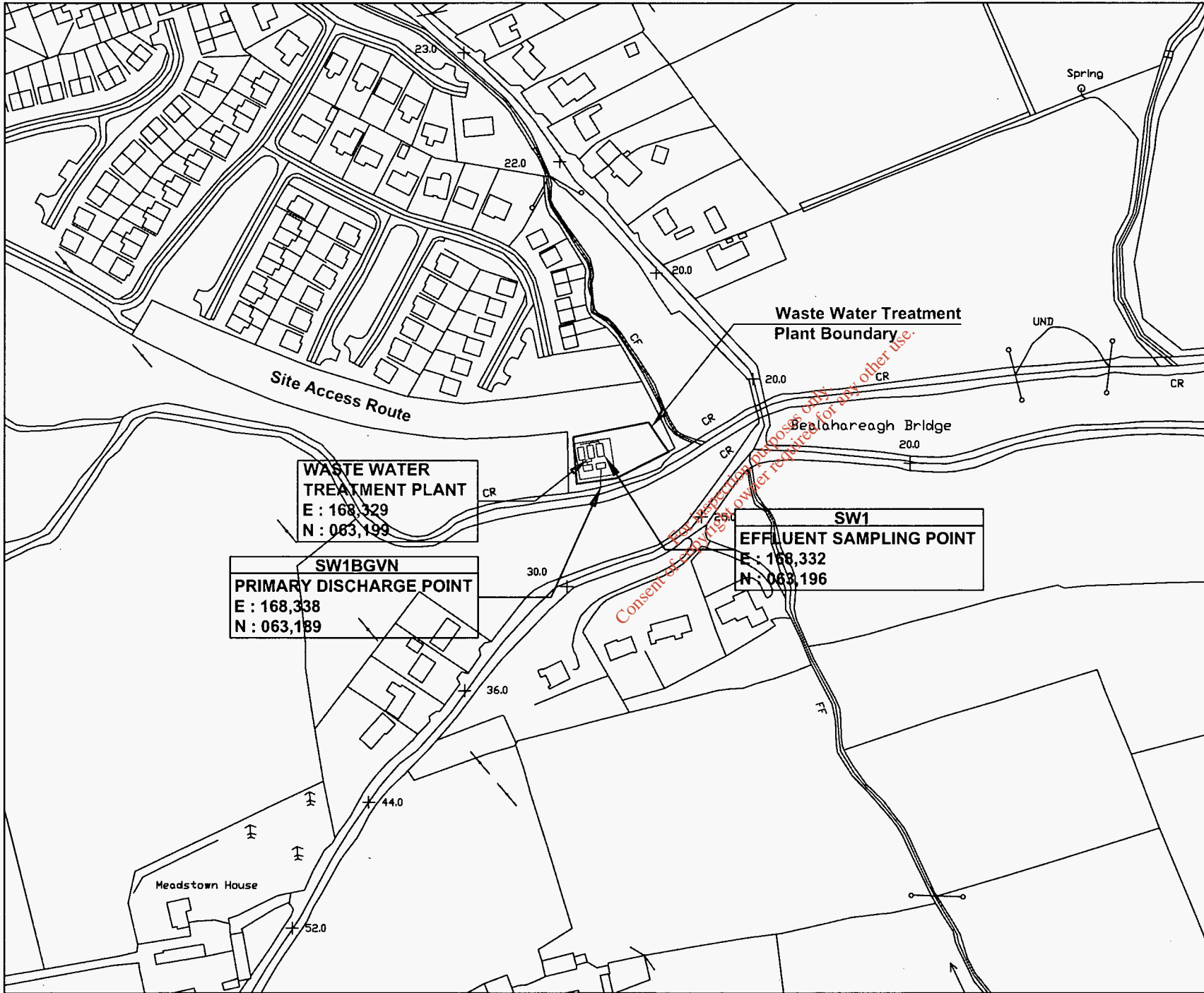
Rev	Date	By	Description

CORK COUNTY COUNCIL
Not a Statutory Body. Created by the Local Government Act 2001.
 County Engineers
 County Hall, Cork.

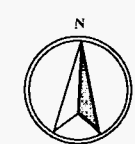
Project: BALLYGARVAN WWTP
 WASTE WATER
 DISCHARGE LICENCE APPLICATION

Title: Application Form
 Attachment E2_Map10
 Location of Ambient Monitoring Points

Designed: MM	Checked: PT	Scale: 1:10,000 @ A3	Drawing No: E2_Map10
Drawn: MM	Approved: HOR	Date: 23.06.12	
File Path:			Sheet:



- NOTES:**
1. This drawing is the property of Cork County Council. It is a confidential document and must not be copied, used, or its content divulged without prior written consent.
 2. Includes Ordnance Survey Ireland data reproduced under OSI Licence number: Cork County Council CCMA 2004/07. Unauthorised reproduction infringes Ordnance Survey Ireland and Government of Ireland copyright. © Ordnance Survey Ireland, 2004.
 3. All levels refer to Ordnance Survey Datum, Malin Head.
 4. DO NOT SCALE, use figured dimensions only, if in doubt ask.



Rev.	Date	By	Description

CORK COUNTY COUNCIL
Head Office: 2005, B.S. C. Eng. Building, P.L.E. 1982
 County Engineers
 County Hall, Cork.

Project: BALLYGARVAN WWT
 WASTE WATER
 DISCHARGE LICENCE APPLICATION

Title: Application Form
 Attachment E2_Map11
 Location of Monitoring & Sampling Points

Designed:	Checked: PT	Scale: 1:2000 @ A3	Drawn by:
Drawn: MM	Approved: HQR	Date: 25.06.12	E2_Map11
File Path:	Status:		

Ballygarvan Outlet Table E4

Ballygarvan Outlet Table E4							mean value	UWW/Reg Limits
Sample Date	24/2/2011	16/6/2011	14/7/2011	25/8/2011	23/11/2011	1/12/2011		
Sample	Effluent	Effluent	Effluent	Effluent	Effluent	Effluent		
Sample Type	Grab	Grab	Grab	Grab	Grab	Grab		
Sample Code	GV113	GV488	GV599	GV791	GV1112	GV1158		
Flow M ³ /Day	*	*	*	*	*	*		
Suspended Solids mg/L	178	37	360	513	70	374	272	35
BOD mg/L	91	29	170	331	37	115	155	25
COD mg/L	325	134	572	1127	194	503	540	125

	exceeds Urban Wastewater Regulations Limits
	half of LOD for statistical purposes
	Unapproved Results

For inspection purposes only.
Consent of copyright owner required for any other use.

Attachment E4- Ballygarvan WWDL licence application

Ballygarvan WWTP Discharge Outlet				Mean value	UWW Reg Limits
Sample	Effluent	Effluent	Effluent		
Sample Code	GW281	GW382	GW526		
Sample Date	18/4/2012	17/5/2012	27/6/2012		
Sample Type	Grab	Grab	Grab		
Flow M ³ /Day	*	*	*		
BOD mg/L	93	84	60	79.0	25
COD mg/L	305	245	266	272	125
Suspended Solids mg/L	153	88	114	118	35
O-PO4-P mg/l	*	5.43	*	*	
TP-P mg/l	*	7.6	*	*	
Ammonia-N mg/l	*	42.7	*	*	
TN-N mg/l	*	47.23	*	*	
Nitrate-N mg/l	*	<0.50	*	*	
TON mg/l	*	<0.50	*	*	
Nitrite-N mg/l	*	<0.1	*	*	
Sulphate mg/l	*	76.7	*	*	
Chloride mg/l	*	53	*	*	

exceeds Urban Wastewater Regulations Limits
half of LOD for statistical purposes

Ballygarvan River U/S	
Sample	River
Sample Code	GW368
Sample Date	17/5/2012
Sample Type	Grab
pH	7.4
BOD mg/L	1.2
Suspended Solids mg/L	<2.5
TP-P mg/l	<0.05
O-PO4-P mg/l	0.005
Ammonia-N mg/l	0.014
TN-N mg/l	4.93
Nitrate-N mg/l	4.9
TON mg/l	4.904
Nitrite-N mg/l	0.004
Conductivity at 20°C uS/cm	207
Sulphate mg/l	<30
Chloride mg/l	<25
DO mg/l	11.37
Temperature °C	12.2

Ballygarvan River D/S	
Sample	River
Sample Code	GW367
Sample Date	17/5/2012
Sample Type	Grab
pH	7.5
BOD mg/L	<1.0
Suspended Solids mg/L	<2.5

TP-P mg/l	<0.05
O-PO4-P mg/l	0.008
Ammonia-N mg/l	0.036
TN-N mg/l	4.91
Nitrate-N mg/l	4.68
TON mg/l	4.684
Nitrite-N mg/l	0.004
Sulphate mg/l	<30
Chloride mg/l	<25
Conductivity at 20°C uS/cm	209
DO mg/l	11.3
Temperature °C	11.4

For inspection purposes only.
Consent of copyright owner required for any other use.

Attachment E4 Ballygarvan Discharge Outlet

Sample Date	24/2/2011	16/6/2011	14/7/2011	25/8/2011	23/11/2011	1/12/2011
Sample	Effluent	Effluent	Effluent	Effluent	Effluent	Effluent
Sample Type	Grab	Grab	Grab	Grab	Grab	Grab
Sample Code	GV113	GV488	GV599	GV791	GV1112	GV1158
Flow M ³ /Day	*	*	*	*	*	*
Suspended Solids mg/L	178	37	360	513	70	374
BOD mg/L	91	29	170	331	37	115
COD mg/L	325	134	572	1127	194	503

	exceeds Urban Wastewater Regulations Limits
	half of LOD for statistical purposes

For inspection purposes only.
Consent of copyright owner required for any other use.

mean value	UWW Reg Limits
272	35
155	25
540	125

For inspection purposes only.
Consent of copyright owner required for any other use.

(Sheet 1 Of 1)

Location: Ballygarvan STP

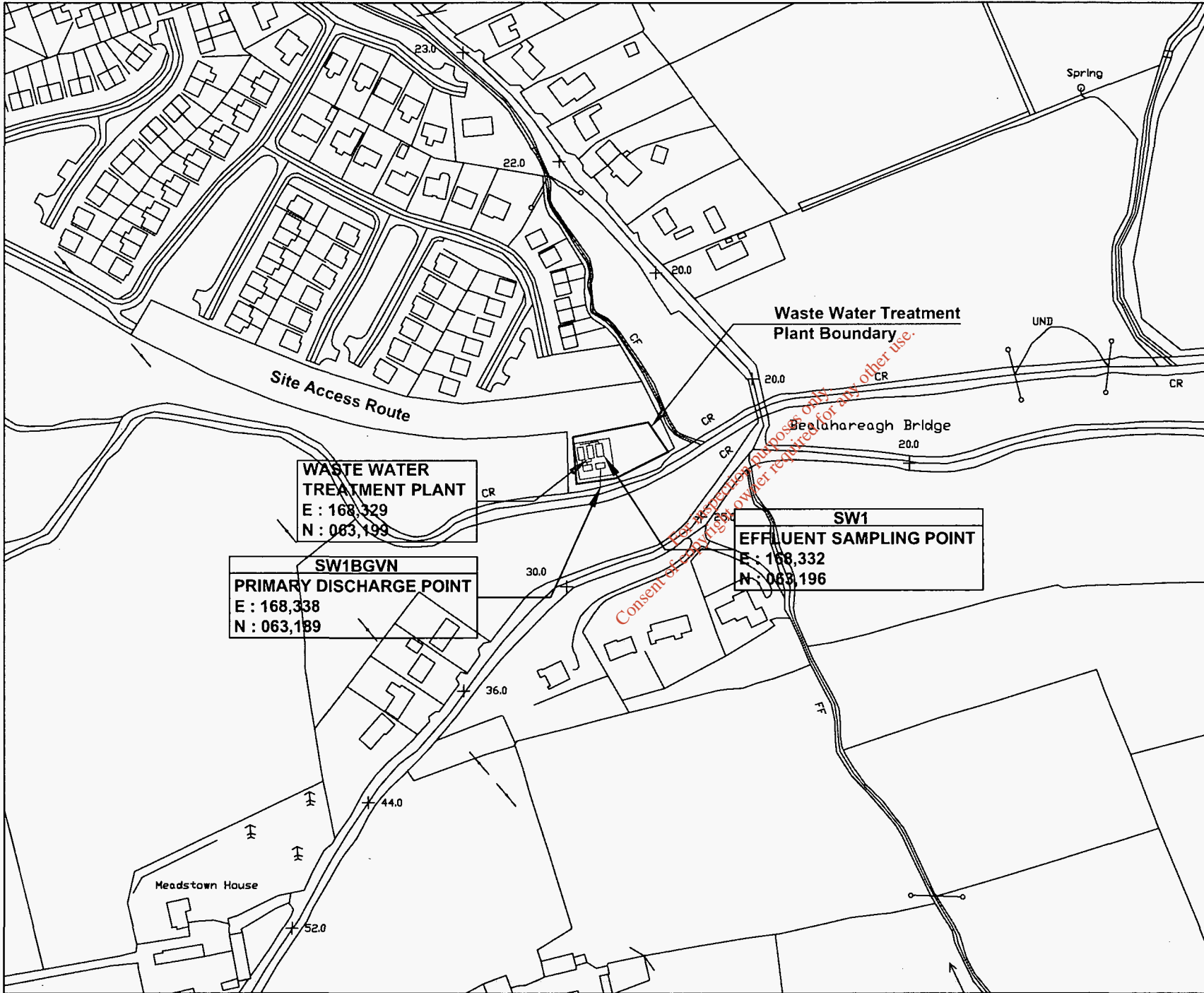
Date Sampled: 04/07/12

Sampling Method: Grab

Parameter	Result mg/l	Normal Analytical Range		Analysis method / technique
		Outlet	Limit of detection (LOD)	
pH			0.1-14.0	APHA 8500 HB
Ammonical Nitrogen NH3-N (mg/l)	19.4		0.05 mg/l	I.S.E
Chemical Oxygen Demand (mg/l)	153		5 mg/l	APHA 5220D
cBiological Oxygen Demand (mg/l)	63		2 mg/l	APHA 5210-B
Ortho-Phosphate-P (mg/l)	5		0.05 mg/l	Colourimetrically
Total Phosphate-P (mg/l)	6.8		0.05 mg/l	Colourimetrically
Suspended Solids (mg/l)	140		1 mg/l	APHA 2540D

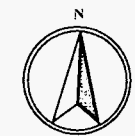
Diarmuid Cronin
Environmental Laboratory Ballincollig

For inspection purposes only.
Consent of copyright owner required for any other use.



NOTES:

1. This drawing is the property of Cork County Council. It is a confidential document and must not be copied, used, or its content divulged without prior written consent.
2. Includes Ordnance Survey Ireland data reproduced under OSI Licence number: Cork County Council CCMA 2004/07. Unauthorised reproduction infringes Ordnance Survey Ireland and Government of Ireland copyright. © Ordnance Survey Ireland, 2004.
3. All levels refer to Ordnance Survey Datum, Malin Head.
4. DO NOT SCALE, use figured dimensions only, if in doubt ask.



Rev.	Date	By	Description

CORK COUNTY COUNCIL
Head Office: 11 E. Coler, Ballybeg, L22 6YB
 County Offices: County Hall, Cork

Project: BALLYGARVAN WWTP
 WASTE WATER
 DISCHARGE LICENCE APPLICATION

Title: Application Form
 Attachment E2_Map11
 Location of Monitoring & Sampling Points

Designed:	Checked: PT	Scale: 1:200 @ A3	Issued by:
Drawn: MM	Approved: HOR	Date: 23.06.12	E2_Map11
File Path:			

Ballygarvan Outlet Table E4							mean value	UWW/Reg Limits
Sample Date	24/2/2011	16/6/2011	14/7/2011	25/8/2011	23/11/2011	1/12/2011		
Sample	Effluent	Effluent	Effluent	Effluent	Effluent	Effluent		
Sample Type	Grab	Grab	Grab	Grab	Grab	Grab		
Sample Code	GV113	GV488	GV599	GV791	GV1112	GV1158		
Flow M ³ /Day	*	*	*	*	*	*		
Suspended Solids mg/L	178	37	360	513	70	374	272	35
BOD mg/L	91	29	170	331	37	115	155	25
COD mg/L	325	134	572	1127	194	503	540	125

	exceeds Urban Wastewater Regulations Limits
	half of LOD for statistical purposes
	Unapproved Results

For inspection purposes only.
Consent of copyright owner required for any other use.

Attachment E4- Ballygarvan WWDL licence application

Ballygarvan WWTP Discharge Outlet				Mean value	UWW Reg Limits
Sample	Effluent	Effluent	Effluent		
Sample Code	GW281	GW382	GW526		
Sample Date	18/4/2012	17/5/2012	27/6/2012		
Sample Type	Grab	Grab	Grab		
Flow M ³ /Day	*	*	*		
BOD mg/L	93	84	60	79.0	25
COD mg/L	305	245	266	272	125
Suspended Solids mg/L	153	88	114	118	35
O-PO4-P mg/l	*	5.43	*	*	
TP-P mg/l	*	7.6	*	*	
Ammonia-N mg/l	*	42.7	*	*	
TN-N mg/l	*	47.23	*	*	
Nitrate-N mg/l	*	<0.50	*	*	
TON mg/l	*	<0.50	*	*	
Nitrite-N mg/l	*	<0.1	*	*	
Sulphate mg/l	*	76.7	*	*	
Chloride mg/l	*	53	*	*	

exceeds Urban Wastewater Regulations Limits
half of LOD for statistical purposes

Ballygarvan River U/S	
Sample	River
Sample Code	GW368
Sample Date	17/5/2012
Sample Type	Grab
pH	7.4
BOD mg/L	1.2
Suspended Solids mg/L	<2.5
TP-P mg/l	<0.05
O-PO4-P mg/l	0.005
Ammonia-N mg/l	0.014
TN-N mg/l	4.93
Nitrate-N mg/l	4.9
TON mg/l	4.904
Nitrite-N mg/l	0.004
Conductivity at 20°C uS/cm	207
Sulphate mg/l	<30
Chloride mg/l	<25
DO mg/l	11.37
Temperature °C	12.2

Ballygarvan River D/S	
Sample	River
Sample Code	GW367
Sample Date	17/5/2012
Sample Type	Grab
pH	7.5
BOD mg/L	<1.0
Suspended Solids mg/L	<2.5

TP-P mg/l	<0.05
O-PO4-P mg/l	0.008
Ammonia-N mg/l	0.036
TN-N mg/l	4.91
Nitrate-N mg/l	4.68
TON mg/l	4.684
Nitrite-N mg/l	0.004
Sulphate mg/l	<30
Chloride mg/l	<25
Conductivity at 20°C uS/cm	209
DO mg/l	11.3
Temperature °C	11.4

For inspection purposes only.
Consent of copyright owner required for any other use.

Attachment E4 Ballygarvan Discharge Outlet

Sample Date	24/2/2011	16/6/2011	14/7/2011	25/8/2011	23/11/2011	1/12/2011
Sample	Effluent	Effluent	Effluent	Effluent	Effluent	Effluent
Sample Type	Grab	Grab	Grab	Grab	Grab	Grab
Sample Code	GV113	GV488	GV599	GV791	GV1112	GV1158
Flow M ³ /Day	*	*	*	*	*	*
Suspended Solids mg/L	178	37	360	513	70	374
BOD mg/L	91	29	170	331	37	115
COD mg/L	325	134	572	1127	194	503

	exceeds Urban Wastewater Regulations Limits
	half of LOD for statistical purposes

For inspection purposes only.
 Consent of copyright owner required for any other use.

mean value	UWW Reg Limits
272	35
155	25
540	125

For inspection purposes only.
Consent of copyright owner required for any other use.

(Sheet 1 of 1)

Location: Ballygarvan STP

Date Sampled: 04/07/12

Sampling Method: Grab

Parameter	Result mg/l	Normal Analytical Range		Analysis method / technique
		Outlet	Limit of detection (LOD)	
pH			0.1-14.0	APHA 2500 HB
Ammonical Nitrogen NH3-N (mg/l)	19.4		0.05 mg/l	I.S.E
Chemical Oxygen Demand (mg/l)	153		5 mg/l	APHA 5220D
cBiological Oxygen Demand (mg/l)	63		2 mg/l	APHA 5210-B
Ortho-Phosphate-P (mg/l)	5		0.05 mg/l	Colourimetrically
Total Phosphate-P (mg/l)	6.8		0.05 mg/l	Colourimetrically
Suspended Solids (mg/l)	140		1 mg/l	APHA 2540D

Diarmuid Cronin
Environmental Laboratory Ballincollig

For inspection purposes only.
Consent of copyright owner required for any other use.

 Irish National Accreditation Board

Accreditation Certificate

Cork County Council

Wastewater Testing Laboratory, Inniscarra, Co. Cork

Testing Laboratory

Registration number: 016T

is accredited by the Irish National Accreditation Board (INAB) to undertake testing as detailed in the Schedule bearing the Registration Number detailed above, in compliance with the International Standard ISO/IEC 17025:2005 2nd Edition "General Requirements for the Competence of Testing and Calibration Laboratories"

(This Certificate must be read in conjunction with the Annexed Schedule of Accreditation)

Date of award of accreditation: 01:10:2002

Date of last renewal of accreditation: 20:09:2007

Expiry date of this certificate of accreditation: 01:10:2012

This Accreditation shall remain in force until further notice subject to continuing compliance with INAB accreditation criteria, ISO/IEC 17025 and any further requirements specified by the Irish National Accreditation Board.

Manager:



Mr Tom Dempsey

Chairperson:



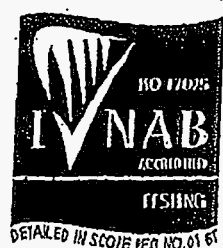
Dr Máire Walsh

Issued on 23 June 2008

Organisations are subject to annual surveillance and are re-assessed every five years. The renewal date on this Certificate confirms the latest date of renewal of accreditation. To confirm the validity of this Certificate, please contact the Irish National Accreditation Board.

The INAB is a signatory of the European co-operation for Accreditation (EA) Testing Multilateral Agreement (MLA) and the International Laboratory Accreditation Cooperation (ILAC) Mutual Recognition Arrangement.

Schedule of Accreditation



Permanent Laboratory:
Category A

THE IRISH NATIONAL ACCREDITATION BOARD (INAB) is the Irish body for the accreditation of organisations including laboratories.

Laboratory accreditation is available to testing and calibration facilities operated by manufacturing organisations, government departments, educational institutions and commercial testing/calibration services. Indeed, any organisation involved in testing, measurement or calibration in any area of technology can seek accreditation for the work it is undertaking.

Each accredited laboratory has been assessed by skilled specialist assessors and found to meet criteria which are in compliance with ISO/IEC 17025 or ISO/IEC 15189 (medical laboratories). Frequent audits, together with periodic inter-laboratory test programmes, ensure that these standards of operation are maintained.

Testing and Calibration Categories:

- Category A:** Permanent laboratory calibration and testing where the laboratory is erected on a fixed location for a period expected to be greater than three years.
- Category B:** Site calibration and testing that is performed by staff sent out on site by a permanent laboratory that is accredited by the Irish National Accreditation Board.
- Category C:** Site calibration and testing that is performed in a site/mobile laboratory or by staff sent out by such a laboratory, the operation of which is the responsibility of a permanent laboratory accredited by the Irish National Accreditation Board.
- Category D:** Site calibration and testing that is performed on site by individuals and organisations that do not have a permanent calibration/testing laboratory. Testing may be performed using
 - (a) portable test equipment
 - (b) a site laboratory
 - (c) a mobile laboratory or
 - (d) equipment from a mobile or site laboratory

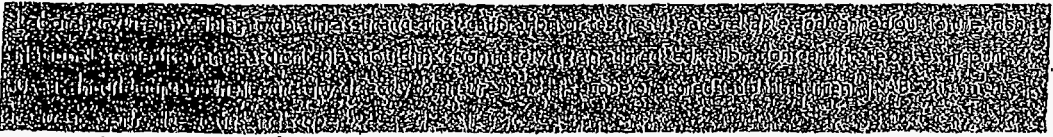
Standard Specification or Test Procedure Used:

The standard specification or test procedure that is accredited is the issue that is current on the date of the most recent visit, unless otherwise stated.

Glossary of Terms

Facilities:

- Public calibration/testing service:** Commercial operations which actively seek work from others.
- Conditionally available for public calibration/testing:** Established for another primary purpose but, more commonly than not, is available for outside work.
- Normally not available for public calibration/testing:** Unavailable for public calibration/testing more often than not.



Scope of Accreditation



Cork County Council
Chemical Testing Laboratory

Permanent Laboratory:
Category A

INAB Classification number (P9)	Type of test/properties measured Range of measurement	Standard specifications Equipment/techniques used
<p>766 Waters. .01 Waters for domestic purposes Surface and ground waters.</p>	<p>Orthophosphate as P (Konelab) Range: 0.005-1.00 mg O-PO4 P/L High Range: 1000 mg O-PO4 P/L Method Detection Limit: 0.02 mg O-PO4 P/L</p> <p>Chloride (Konelab) Range: 25-250 mg/L Cl- High Range Conc.: 86,000 mg/L Cl- Method Detection Limit: 25 mg/L Cl-</p> <p>Sulphate (Konelab) Range: 30-250 mg/L SO4/L High Range Conc.: 35,000 mg/L SO4/L Method Detection Limit: 30 mg SO4/L</p>	<p>CP No. 23 Ascorbic Acid Method</p> <p>CP No. 24 Ferricyanide Method</p> <p>CP No. 25 Documented in-house method by Konelab based on method for the examination of waters and waste waters and associated material HMSO: 1981</p>

Scope of Accreditation

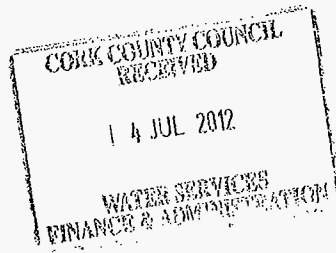


Cork County Council
Chemical Testing Laboratory

Permanent Laboratory:
Category A

INAB Classification number (P9) Materials/products tested	Type of test/properties measured Range of measurement	Standard specifications Equipment/techniques used
766 Waters .05 Trade Wastes Industrial effluents Urban Wastewater Municipal Wastewater	Chemical analysis Orthophosphate as P (Konelab) Range: 0.005 - 1.00 mg O-PO4 P/L High Range: 1000 mg O-PO4 P/L Method Detection Limit: 0.02 mg O-PO4 P/L Chloride (Konelab) Range: 25-250 mg/L Cl- High Range Conc.: 86,600 mg /L Cl- Method Detection Limit: 25mg / L Cl- Sulphate (Konelab)) Range: 30-250 mg/L SO4 /L High Range Conc.: 35,000 mg/L SO4 /L Method Detection Limit: 30 mg SO4 /L	Documented in-house methods based on Standard Methods for the Examination of Water & Wastewater 21 st Edition APHA (See Note 1) CP No. 1 Membrane electrode CP No. 23 Ascorbic Acid Method CP No. 24 Ferricyanide Method CP No. 25 Documented in-house method by Konelab based on method for the examination of waters and waste waters and associated material HMSO: 1981

Notes
1. APHA American Public Health Association, USA, 21st Edition



Home Query Builder Samples Results Results (River Water)

User Options: Back to Samples Download PDF

Page 1 - Showing 1 to 132 of 132 << First < Previous - 1 - Next > Last >> - Items/Page: 100

Table with columns: Sample Code, Sample Revision, Sample Date, Monitored Entity, Station, Environmental Parameter, Unit Of Measure, Measurement Date, Result, Text Result, Status, Analyst, Comment, Limit Of Detection, Limit Of Quantification, Method Of Analysis. Includes a large diagonal watermark: 'Consent for publication purposes only. Further consent required for reuse.'

33922	1	23/03/2011 10:00:00	19001 - ONSLOWY CDRA3	Colour	24/03/2011 00:00:00	21	21	Adminstrator	0.006
33923	1	23/03/2011 10:00:00	19001 - ONSLOWY CDRA3	Conductivity @20°C	24/03/2011 00:00:00	21	21	Adminstrator	0.006
33924	1	23/03/2011 10:00:00	19001 - ONSLOWY CDRA3	Dissolved Oxygen	24/03/2011 00:00:00	21	21	Adminstrator	0.006
33925	1	23/03/2011 10:00:00	19001 - ONSLOWY CDRA3	Temperature	24/03/2011 00:00:00	10.3	10.3	Adminstrator	0.006
33926	1	23/03/2011 10:00:00	19001 - ONSLOWY CDRA3	Alkalinity - total (as CaCO3)	13/04/2011 01:00:00	10.3	10.3	Adminstrator	0.006
33927	1	13/04/2011 12:00:00	19001 - ONSLOWY CDRA3	Temperature	13/04/2011 01:00:00	56	56	Adminstrator	0.006
33928	1	13/04/2011 12:00:00	19001 - ONSLOWY CDRA3	Ammonia - Total (as NH4)	14/04/2011 01:00:00	0.064	0.064	Adminstrator	0.006
33929	1	13/04/2011 12:00:00	19001 - ONSLOWY CDRA3	BOD - 5 days (Total)	14/04/2011 01:00:00	2.3	2.3	Adminstrator	0.006
33930	1	13/04/2011 12:00:00	19001 - ONSLOWY CDRA3	Chloride	14/04/2011 01:00:00	18.1	18.1	Adminstrator	0.006
33931	1	13/04/2011 12:00:00	19001 - ONSLOWY CDRA3	Dissolved Oxygen	14/04/2011 01:00:00	12.2	12.2	Adminstrator	0.006
33932	1	13/04/2011 12:00:00	19001 - ONSLOWY CDRA3	Nitrite (as N)	14/04/2011 01:00:00	13.2	13.2	Adminstrator	0.006
33933	1	13/04/2011 12:00:00	19001 - ONSLOWY CDRA3	Nitrate (as N)	14/04/2011 01:00:00	13.2	13.2	Adminstrator	0.006
33934	1	13/04/2011 12:00:00	19001 - ONSLOWY CDRA3	Total Hardness (as CaCO3)	14/04/2011 01:00:00	0.06	0.06	Adminstrator	0.006
33935	1	13/04/2011 12:00:00	19001 - ONSLOWY CDRA3	Orthophosphate (as P)	14/04/2011 01:00:00	0.015	0.015	Adminstrator	0.006
33936	1	13/04/2011 12:00:00	19001 - ONSLOWY CDRA3	Appearance (on Sampling)	14/04/2011 01:00:00	7.4	7.4	Adminstrator	0.006
33937	1	13/04/2011 12:00:00	19001 - ONSLOWY CDRA3	Colour	14/04/2011 01:00:00	14	14	Adminstrator	0.006
33938	1	13/04/2011 12:00:00	19001 - ONSLOWY CDRA3	Conductivity @20°C	14/04/2011 01:00:00	193	193	Adminstrator	0.006
33939	1	13/04/2011 12:00:00	19001 - ONSLOWY CDRA3	Dissolved Oxygen	13/04/2011 01:00:00	100	100	Adminstrator	0.006
33940	1	13/04/2011 12:00:00	19001 - ONSLOWY CDRA3	Temperature	13/07/2011 01:00:00	14.3	14.3	Adminstrator	0.006
33941	1	13/07/2011 10:00:00	19001 - ONSLOWY CDRA3	Alkalinity - total (as CaCO3)	15/07/2011 01:00:00	56	56	Adminstrator	0.006
33942	1	13/07/2011 10:00:00	19001 - ONSLOWY CDRA3	Ammonia - Total (as NH4)	15/07/2011 01:00:00	0.7	0.066	Adminstrator	0.006
33943	1	13/07/2011 10:00:00	19001 - ONSLOWY CDRA3	BOD - 5 days (Total)	15/07/2011 01:00:00	9.4	9.4	Adminstrator	0.006
33944	1	13/07/2011 10:00:00	19001 - ONSLOWY CDRA3	Chloride	14/07/2011 01:00:00	13.2	13.2	Adminstrator	0.006
33945	1	13/07/2011 10:00:00	19001 - ONSLOWY CDRA3	Dissolved Oxygen	14/07/2011 01:00:00	0.02	0.02	Adminstrator	0.006
33946	1	13/07/2011 10:00:00	19001 - ONSLOWY CDRA3	Nitrite (as N)	13/07/2011 01:00:00	81	81	Adminstrator	0.006
33947	1	13/07/2011 10:00:00	19001 - ONSLOWY CDRA3	Nitrate (as N)	13/07/2011 01:00:00	0.013	0.013	Adminstrator	0.006
33948	1	13/07/2011 10:00:00	19001 - ONSLOWY CDRA3	Total Hardness (as CaCO3)	13/07/2011 01:00:00	7.4	7.4	Adminstrator	0.006
33949	1	13/07/2011 10:00:00	19001 - ONSLOWY CDRA3	Orthophosphate (as P)	13/07/2011 01:00:00	0.013	0.013	Adminstrator	0.006
33950	1	13/07/2011 10:00:00	19001 - ONSLOWY CDRA3	Appearance (on Sampling)	13/07/2011 01:00:00	38	38	Adminstrator	0.006
33951	1	13/07/2011 10:00:00	19001 - ONSLOWY CDRA3	Colour	13/07/2011 01:00:00	216	216	Adminstrator	0.006
33952	1	13/07/2011 10:00:00	19001 - ONSLOWY CDRA3	Conductivity @20°C	13/07/2011 01:00:00	94	94	Adminstrator	0.006
33953	1	13/07/2011 10:00:00	19001 - ONSLOWY CDRA3	Dissolved Oxygen	13/07/2011 01:00:00	17.8	17.8	Adminstrator	0.006
33954	1	13/07/2011 10:00:00	19001 - ONSLOWY CDRA3	Temperature	15/09/2011 01:00:00	12.8	12.8	Adminstrator	0.006
33955	1	15/09/2011 12:15:00	19001 - ONSLOWY CDRA3	Alkalinity - total (as CaCO3)	16/09/2011 01:00:00	8.6	8.6	Adminstrator	0.006
33956	1	15/09/2011 12:15:00	19001 - ONSLOWY CDRA3	Ammonia - Total (as NH4)	16/09/2011 01:00:00	0.066	0.066	Adminstrator	0.006
33957	1	15/09/2011 12:15:00	19001 - ONSLOWY CDRA3	BOD - 5 days (Total)	16/09/2011 01:00:00	1.7	1.7	Adminstrator	0.006
33958	1	15/09/2011 12:15:00	19001 - ONSLOWY CDRA3	Chloride	15/09/2011 01:00:00	8.9	8.9	Adminstrator	0.006
33959	1	15/09/2011 12:15:00	19001 - ONSLOWY CDRA3	Dissolved Oxygen	15/09/2011 01:00:00	10.9	10.9	Adminstrator	0.006
33960	1	15/09/2011 12:15:00	19001 - ONSLOWY CDRA3	Nitrite (as N)	16/09/2011 01:00:00	89	89	Adminstrator	0.006
33961	1	15/09/2011 12:15:00	19001 - ONSLOWY CDRA3	Nitrate (as N)	16/09/2011 01:00:00	0.017	0.017	Adminstrator	0.006
33962	1	15/09/2011 12:15:00	19001 - ONSLOWY CDRA3	Total Hardness (as CaCO3)	15/09/2011 01:00:00	7.4	7.4	Adminstrator	0.006
33963	1	15/09/2011 12:15:00	19001 - ONSLOWY CDRA3	Orthophosphate (as P)	15/09/2011 01:00:00	66	66	Adminstrator	0.006
33964	1	15/09/2011 12:15:00	19001 - ONSLOWY CDRA3	Appearance (on Sampling)	15/09/2011 01:00:00	237	237	Adminstrator	0.006
33965	1	15/09/2011 12:15:00	19001 - ONSLOWY CDRA3	Colour	15/09/2011 01:00:00	85	85	Adminstrator	0.006
33966	1	15/09/2011 12:15:00	19001 - ONSLOWY CDRA3	Conductivity @20°C	09/11/2011 00:00:00	74.3	74.3	Adminstrator	0.006
33967	1	15/09/2011 12:15:00	19001 - ONSLOWY CDRA3	Dissolved Oxygen	09/11/2011 00:00:00	24	24	Adminstrator	0.006
33968	1	15/09/2011 12:15:00	19001 - ONSLOWY CDRA3	Temperature	09/11/2011 00:00:00	0.032	0.032	Adminstrator	0.006
33969	1	15/09/2011 12:15:00	19001 - ONSLOWY CDRA3	Alkalinity - total (as CaCO3)	17/11/2011 00:00:00	21.5	21.5	Adminstrator	0.006
33970	1	15/09/2011 12:15:00	19001 - ONSLOWY CDRA3	Ammonia - Total (as NH4)	17/11/2011 00:00:00	9.9	9.9	Adminstrator	0.006
33971	1	15/09/2011 12:15:00	19001 - ONSLOWY CDRA3	BOD - 5 days (Total)	17/11/2011 00:00:00	20	20	Adminstrator	0.006
33972	1	15/09/2011 12:15:00	19001 - ONSLOWY CDRA3	Chloride	09/11/2011 00:00:00	0.039	0.039	Adminstrator	0.006
33973	1	15/09/2011 12:15:00	19001 - ONSLOWY CDRA3	Dissolved Oxygen	09/11/2011 00:00:00	0.026	0.026	Adminstrator	0.006
33974	1	15/09/2011 12:15:00	19001 - ONSLOWY CDRA3	Nitrite (as N)	10/11/2011 00:00:00	2.5	2.5	Adminstrator	0.006
33975	1	15/09/2011 12:15:00	19001 - ONSLOWY CDRA3	Nitrate (as N)	10/11/2011 00:00:00	28	28	Adminstrator	0.006
33976	1	15/09/2011 12:15:00	19001 - ONSLOWY CDRA3	Total Hardness (as CaCO3)	10/11/2011 00:00:00	23	23	Adminstrator	0.006
33977	1	15/09/2011 12:15:00	19001 - ONSLOWY CDRA3	Orthophosphate (as P)	09/11/2011 00:00:00	92	92	Adminstrator	0.006
33978	1	15/09/2011 12:15:00	19001 - ONSLOWY CDRA3	Appearance (on Sampling)	10/11/2011 00:00:00	28	28	Adminstrator	0.006
33979	1	15/09/2011 12:15:00	19001 - ONSLOWY CDRA3	Colour	10/11/2011 00:00:00	23	23	Adminstrator	0.006
33980	1	15/09/2011 12:15:00	19001 - ONSLOWY CDRA3	Conductivity @20°C	10/11/2011 00:00:00	92	92	Adminstrator	0.006
33981	1	15/09/2011 12:15:00	19001 - ONSLOWY CDRA3	Dissolved Oxygen	09/11/2011 00:00:00	92	92	Adminstrator	0.006

User: Yvonne Hutton - Organisation: EDMC COUNTY COUNCIL - Path to Top - Home - Dashboard - MDS - IFA - Phoenix Creek, Co. Wicklow - Meter: 1311 CD33 916500 - cfmProPa

Consent of EDMC County Council required for all data