

14.0 ARCHAEOLOGY AND CULTURAL HERITAGE

14.1 Introduction

Traynor Environmental has commissioned Wolfhound Archaeology to undertake an assessment of the potential impact of the proposed development at Lear, Bailieborough, Co. Cavan on features of Cultural Heritage significance on or adjacent to the proposed development area. This section outlines the legislative framework for the protection of Cultural Heritage in Ireland, describes the Cultural Heritage sites in the vicinity of the proposed development, discusses the archaeological and historical background and an assessment of the potential of the proposed development to impact on remains of Cultural Heritage significance and outlines appropriate mitigation measures. A full copy of this report is included in Appendix I of the EIS.

14.2 Methodology

This report assesses the impact of the proposed development on the archaeological and architectural heritage of the site and surrounding area. The methodology has been devised to meet the requirements of the National Monuments Service of the Department of the Arts, Heritage and the Gaeltacht as set down in the policy guidelines *Framework and Principles for the Protection of the Archaeological Heritage*. It is also in accordance with the *Guidelines for Archaeologists* published by the Irish Institute of Professional Archaeologists (now the Institute of Archaeologist of Ireland) and the National Roads Authority's *Guidelines for the Assessment of Archaeological Heritage Impacts of National Road Schemes* and in particular the section on environmental impact statements.

It takes cognisance of heritage protection policies as set out in the adopted Cavan County Development Plan 2014-2020.

In relation to archaeological heritage Policy BHP1 relates to the protection, preservation and enhancement of architectural heritage and to adhere to standards advocated in the 'Principles of Conservation' published by the Department of the Environment, Heritage and Local Government, Policy BHP2 refers to encouraging the sympathetic retention, reuse and rehabilitation of Protected Structures and their settings and policy BHP3 seeks to encourage the continued use of protected structures and their curtilage and to promote their sensitive adoption to accommodate modern requirements. Finally, Policy BHP4 seeks to actively encourage and promote the conservation of Cavan's built heritage. In relation to architectural heritage protection the assessment methodology was designed to address Objective BH02, which is to review and maintain the RPS on an on-going basis and to have regard to the NIAH, as appropriate.

The assessment comprises two distinct phases of research:

- A desk top study and;
- A site walkover survey.

These stages were then followed by interpretation of the potential impacts.

Desktop Study

A desktop study of archaeological and cultural heritage sites within the area of the proposed development sites was carried out in order to assess heritage constraints (there was a particular emphasis in the research process on identification of all heritage resources located within c. 1.5 km's of the site). Nine townlands were situated within the study area; Lear, Drumbannon, Pottle Lower, Tanderagee, Corkish, Crocknahattin, Rakeevan, Lisball and Beckscourt. The study area also included part of the urban area of Bailieborough.

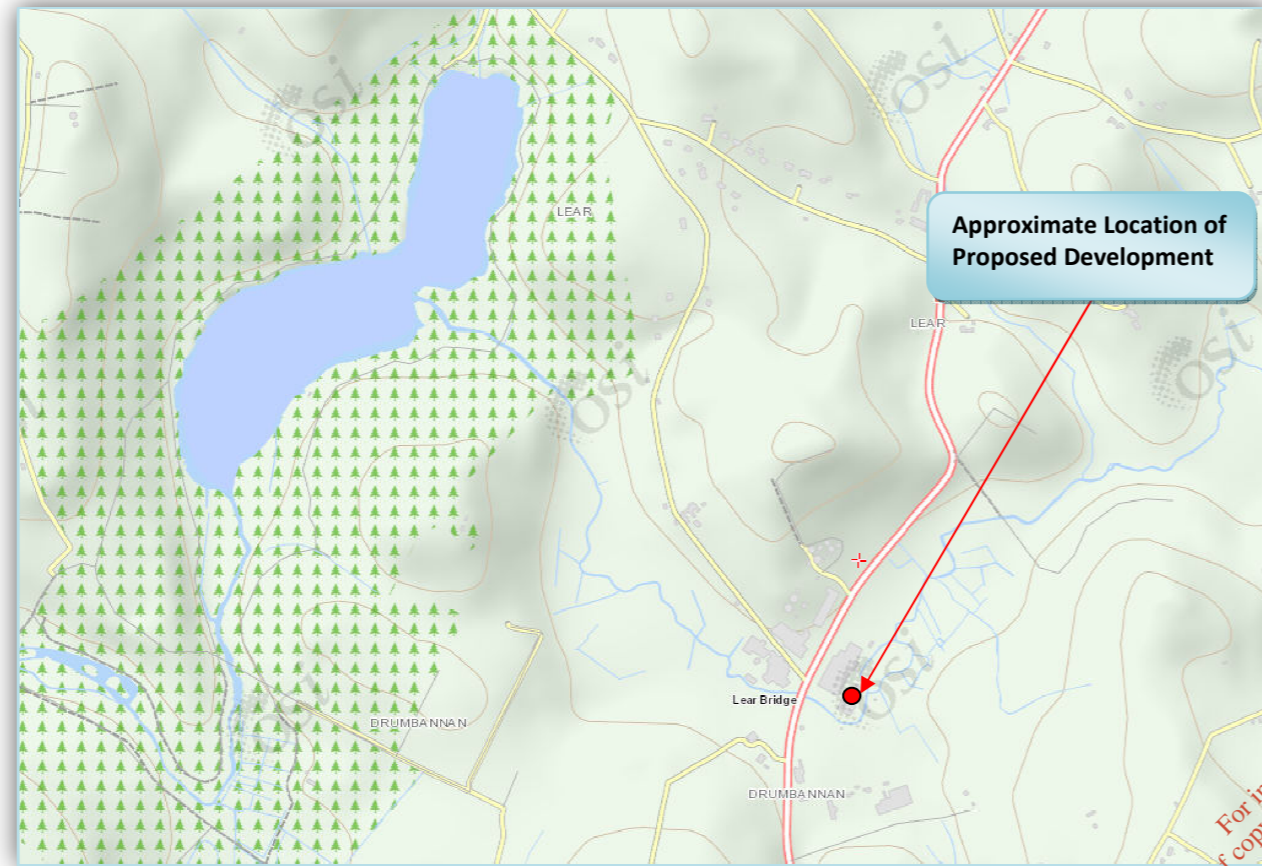
The following resources were consulted for the desk top study:

- Sites and Monuments Record (SMR)
- Record of monuments and places (RMP)
- Databases for National Monument Service
- National Inventory of Architectural Heritage (NIAH)
- Record of Protected Structures (RPS)
- All editions of Ordnance Survey mapping both current and historic
- All orthostatic aerial photography (1995, 2000 and 2005) held on the databases of the Ordnance Survey of Ireland (OSI)
- Previous archaeological work in the area and Excavations Bulletin
- local and national journals
- Local history and archaeological journal

The resources listed above were used to compile a list of all sites of Cultural Heritage significance within the study area. A total of 121 sites of were identified and these are presented in the Cultural Heritage Catalogue (CHC) in Table 14.1 below.

For inspection purposes only.
Copyright owner required for any other use.

Figure 14.1 Site location plan showing relationship to the Castle Lough to the North West and the R178 which runs through the site from North to South. The red dot marks the approximate location of the proposed new dryer.



14.3 Receiving Environment

The site of the proposed development is located in the Townland of Lear, Civil Parish of Bailieborough (CoillanChollaigh), Electoral District of Bailieborough (Coill an Chollaigh), Barony of Clankee (ClannChaoich) in the county of Cavan (An Cabhán). Lear townland is located c. 1.2 km north of Bailieborough. The centre of the proposed development is situated at National Grid XY co-ordinates 267648/298103, and is situated at c. 137 m OD.

The site is situated in an agriculturally productive, undulating drumlin landscape in the upland area of eastern Cavan. Overall the landscape in the vicinity of the proposed development site has abundant surface water resources as well as intermittently occurring agriculturally useful soil deposits. The steeply sloping drumlins and the heavy clay soils are limiting factors on agricultural productivity. The proposed development site is situated in three roughly "pie" shaped blocks of land centred on the Lear Bridge (CHC No. 1). The eastern part of the Lakeland Dairies Bailieboro complex is situated east of the R178 Road. The north-western and south-western areas of the Lakeland Dairies Bailieboro are separated by a local road.

The Lear River, a tributary of the River Blackwater runs to the east and south, forming the boundary to large parts of the proposed development site. The Lear flows under Lear Bridge close to the centre of the Lakeland Dairies Bailieboro complex. The Blackwater originates in upland areas to the west and it feeds a complex wetland environment of lake, fen woodland, bog and reclaimed land situated immediately east of and abutting the Lakeland Dairies Bailieboro complex. The Blackwater flows to the south of the Lakeland Dairies Bailieboro complex under Lear Bridge before curving to the north-west and flowing on toward Castle Lough on its journey downstream towards Lough Ramor. The Blackwater River is the dominant landscape feature in the vicinity of the Lakeland Dairies Bailieboro complex. The River has been effectively canalised in the vicinity of Lear Bridge. The River and its associated wetland areas have had a profound impact on the environment and settlement patterns in the area of the proposed development.

The proposed development site is situated in an area of Drumlin topography. The farmland in the area is characterised by steeply undulating countryside with large areas of wetland and open water in the areas between the dryer and agriculturally productive drumlins. The landscape in the immediate vicinity of the site is comprised of medium to poor quality farmland, subdivided into numerous small to medium sized fields bounded by scrubby hedgerows. Pastoral farming with a heavy emphasis on dairy cattle is the predominant agricultural practice in the area. Tillage and pasture practices are largely unknown in the vicinity of the site. The enclosed and largely treeless landscape in the vicinity of the site, noted at the time of the excavation, is largely the result of recent and historic land management practices.

The landscape in the vicinity of proposed development site today and indeed much of County Cavan is largely a product of 18th and 19th century land management practices. Hedgerows established several hundred years ago form boundaries between small fields. In recent years many of these hedgerows were removed. Numerous small roads and lanes service a dispersed settlement pattern and connect the many rural houses with the urban centres of Bailieborough, Shercock, Kingscourt and Mullagh. The landscape around the site, and indeed much of the wider area around Lear townland, consists of a similar enclosed landscape. With the notable exception of the mixed woodland of the nearby Castlelough estate, very little forest cover is present, and what is to be found comprises of small amounts of riparian woodlands, scrub and modern plantations of coniferous and mixed woodland. These plantations are usually confined to areas of poorer quality land on upland areas or adjacent to wetlands. A particular absence of woodland was noted on level ground in the vicinity of the proposed development site. Non-agricultural land is confined to the floodplain and associated wetlands of the Blackwater River.

The nearest sites are listed in Table 14.1 but they will not be impacted by the development. Their presence is however an indicator that previously unrecorded archaeological features may be present on the proposed development site.

Table 14.1 List of the closest known archaeological monuments from the Record of Monuments and Places

CHC No.	RMP No.	National Grid Co-ordinates	Townland	Class	Description
1	N/A	E 267591 N 298098	Lear	Creamery	Square building. First depicted on 2nd ed. OS mapping. Situated within a rectangular plot measuring 0.325 acres. A circular tank is depicted to SE of creamery building near the river. Some of the original walls of the creamery building survive within the fabric of the modern Lakeland Dairies Bailieborobuilding.
2	N/A	E 267626 N 298032	Lear	Bridge	Depicted on 1st and 2nd ed. OS mapping. Structure has been modernised in recent year with concrete additions. Lower structural elements of the bridge footings on either bank appear may relate to the structures depicted on the 1st and 2nd ed. OS mapping. Were present in ruinous condition at time of assessment.
3	N/A	E 267703 N 298089	Lear	Lime Kiln	Depicted on 1st ed. mapping. Not depicted on 2nd ed. mapping. No surface trace at time of assessment. Location now occupied by part of the Lakeland Dairies Bailieborocomplex.
4	N/A	E 267743 N 298246	Lear	Structure	Rectangular building within roadside plot. Depicted on 1st ed. mapping. Not depicted on 2nd ed. mapping. No surface trace at time of assessment. Location now occupied by part of the Lakeland Dairies Bailieborocomplex.
5	N/A	E 267712 N 298385	Lear	Structures	Rectangular Buildings. Two structures depicted on 1st ed. and one structure depicted on 2nd ed. OS mapping. Location now partially occupied by part of the Lakeland Dairies Bailieborocomplex. A NE-SW oriented lane originally connected the structures to the R road. This lane appears to have originally been comprised of a path bounded by a pair of parallel low earth and stone banks. Although heavily denuded by recent agricultural activity the banks survive as low rounded linear earthworks.
6	N/A	E 267760 N 298397	Lear	Lime Kiln	Depicted on 1st ed. mapping. Not depicted on 2nd ed. mapping. No surface trace at time of assessment.
7	N/A	E 267376 N 298416	Lear	Structures	Rectangular buildings. Three buildings depicted on
8	N/A	E 267550 N 298299	Lear	Spring	First depicted on 2nd ed. OS mapping. No surface trace at time of assessment. Located in field beyond NW boundary of Lakeland Dairies Bailieborocomplex.
9	N/A	E 267494 N 298224	Lear	Structures	Rectangular buildings x 3. First depicted on 2nd ed. OS mapping. Recently demolished. Demolition rubble from structures visible at time of assessment. Within boundary of Lakeland Dairies Bailieborocomplex.
10	N/A	E 267530 N 297973	Drumbannon	Quarry	Depicted on 1st and 2nd ed. OS mapping. No surface trace at time of assessment.

11	N/A	E 2677541 N 297911	Drumbannon	Structure	Rectangular building. First depicted on 2nd ed. OS mapping. Location currently occupied by farm complex.
12	N/A	E 267618 N 297894	Drumbannon	Structure	Rectangular building. Depicted on 1st ed. OS mapping only. Location currently occupied by GAA complex adjacent to Lakeland Dairies Bailieboro.
13	N/A	E 267647 N 297734	Drumbannon	Quarry	Depicted on 1st ed. OS mapping only. Within boundary of Lakeland Dairies Bailieboro complex. Irregular waterlogged depression noted in this area at time of assessment.
14	N/A	E 267904 N 298463	Lear	Structures	Rectangular buildings x 2. Depicted on 1st ed. OS mapping only. No surface trace at time of assessment.
15	N/A	E 267335 N 297879	Drumbannon	Structures	Rectangular buildings x 2. Depicted on 1st ed. OS mapping only. No surface trace at time of assessment.
16	N/A	E 267376 N 297976	Drumbannon	Lime Kiln	Depicted on 1st ed. OS mapping only. No surface trace at time of assessment.
17	N/A	E 267447 N 299233	Drumbannon	Spring	Depicted on 2nd ed. OS mapping only. No surface trace at time of assessment. Located adjacent to CHC No. 7.
18	N/A	E 267983 N 298121		Structures	Rectangular buildings x 2. Depicted on 1st ed. OS mapping only. No surface trace at time of assessment.
19	N/A	E 268027 N 298136		Lime Kiln	Depicted on 1st ed. OS mapping only. No surface trace at time of assessment.
20	CV034-022	E 267226 N 297392	Drumbannon	Ringfort	Depicted on 1st ed. mapping. Not depicted on 2nd ed. mapping. No surface trace at time of assessment.
21		E 267231 N 297388	Drumbannon	Lime Kiln	Depicted on 1st ed. mapping. Not depicted on 2nd ed. mapping. No surface trace at time of assessment.
22	CV034-022	E 267592 N 297398	Drumbannon	Graveyard	Depicted on 1st and 2nd ed. OS mapping.
23	CV034-022001	E 267302 N 277097	Drumbannon	Church	Old Church. Depicted on 1st and 2nd ed. OS mapping.
24	N/A	E 267348 N 297069	Drumbannon	Lime Kiln	Depicted on 1st ed. mapping. Not depicted on 2nd ed. mapping. No surface trace at time of assessment.
25	N/A	E 267395 N 297041	Drumbannon	Church	Depicted on 1st and 2nd ed. OS mapping. Extant at time of assessment.
26	N/A	E 267395 N 297083	Drumbannon	Structure	Rectangular building. Depicted on 1st ed. mapping. Not depicted on 2nd ed. mapping. No surface trace at time of assessment.

27	N/A	E 267124 N 297596	Drumbannon	Structure	Rectangular structure. Rectangular building. Depicted on 1st ed mapping. Not depicted on 2nd ed mapping. No surface trace at time of assessment. A modern housing development is now located in this area.
28	N/A	E 266948 N 297596	Drumbannon	Structures	Two adjacent structures; one L- shaped and one rectangular depicted on 1st ed mapping. Not depicted on 2nd ed mapping. Not accessible at time of assessment.
29	N/A	E 266903 N 297862	Drumbannon	Structure	Rectangular building. Depicted on 1st and 2nd ed. OS mapping. Low stone walls visible at site of structure visible at time of assessment.
30	N/A	E 267044 N 297419	Drumbannon	Structure	Rectangular building. Depicted on 1st ed. mapping. Not depicted on 2nd ed. mapping. No surface trace at time of assessment.
31	N/A	E 267024 N 297884	Drumbannon	Structure	Rectangular building. Depicted on 1st ed. mapping. Not depicted on 2nd ed. mapping. No surface trace at time of assessment.
32	N/A	E 266928 N 297829	Drumbannon	Lime Kiln	Depicted on 1st ed. mapping. Not depicted on 2nd ed. mapping. No surface trace at time of assessment.
33	N/A	E 266905 N 298383	Drumbannon	Structures	Rectangular buildings. Depicted on 1st and 2nd ed. OS mapping. Structures were present in ruinous condition at time of assessment.
34	N/A	E 266928 N 297397	Drumbannon	Lime Kiln	Depicted on 1st ed. mapping. Not depicted on 2nd ed. mapping. No surface trace at time of assessment.
35	CV028-015	E 266822 N 298451	Drumbannon	Ringfort	Depicted on 1st and 2nd ed. OS mapping. Marked 'Fort' on OS 1836 and 1876 eds. Situated close to the summit of a steep drumlin hill within a dense modern plantation of coniferous trees. Survives as an impressive earthen rampart enclosing a roughly circular space
36	N/A	E 267093 N 298269	Drumbannon	Structure	Depicted on 1st ed. mapping. Not depicted on 2nd ed. mapping. No surface trace at time of assessment.
37	N/A	E 267329 N 298655	Lear	Structure	Rectangular building. Depicted on 1st and 2nd ed. OS mapping. No surface trace at time of assessment.
38	N/A	E 267654 N 298567	Lear	Trig point	Depicted on 1st and 2nd ed. OS mapping. No surface trace at time of assessment.
39	N/A	E 267959 N 298522	Lear	Lime Kiln	Located beside CHC No. 14. Depicted on 1st ed. mapping. Not depicted on 2nd ed. mapping. No surface trace at time of assessment.
40	N/A	E 267880 N 298641	Lear	Structures	Rectangular buildings x 2. Depicted on 1st ed. mapping. Not depicted on 2nd ed. mapping. No surface trace at time of assessment

41	N/A	E 267965 N 298696	Lear	Structures	Rectangular buildings x 2. Depicted on 1st ed. mapping. Not depicted on 2nd ed. mapping. No surface trace at time of assessment.
42	N/A	E 267986 N 298614	Lear	Structures	Depicted on 1st ed. mapping. Not depicted on 2nd ed. mapping. No surface trace at time of assessment.
43	N/A	E 268008 N 298587	Lear	Structures	Rectangular buildings x 2. Depicted on 1st ed. mapping. Not depicted on 2nd ed. mapping. No surface trace at time of assessment.
44	N/A	E 268088 N 298576	Lear	Lime Kiln	Depicted on 1st ed. mapping. Not depicted on 2nd ed. mapping. No surface trace at time of assessment.
45	N/A	E 268160 N 298568	Lear	Structure	Rectangular building. Depicted on 1st and 2nd ed. OS mapping. No surface trace at time of assessment.
46	N/A	E 268074 N 298517	Lear	Structure	Rectangular building. Depicted on 1st ed. mapping. Not depicted on 2nd ed. mapping. No surface trace at time of assessment.
47	N/A	E 268204 N 298263	Pottle Lower	Structures	Rectangular buildings x 4. Depicted on 1st and 2nd ed. OS mapping. Structures were present in ruinous condition at time of assessment.
48	N/A	E 268231 N 298584	Lear	Springs	Natural springs x 2. Located beside CHC No. 45. Depicted on 2nd ed. mapping. Not accessible at time of assessment.
49	CV028-010	E 266279 N 298507	Crocknahattin	Ice House	Ice House. Depicted on 1st and 2nd ed. OS mapping. No surface trace at time of assessment.
50	CV028-009001	E 266105 N 298215	Crocknahattin	Castle	Castle. A castle and bawn was apparently erected in the mid-17th century by William Baillie, a Cromwellian planter, on or near the site of Crocknahattin House, about a mile from the town of Bailieborough. Crocknahattin House is not marked on any OS ed. and was not located. An earlier account recorded the site as being situated at the end of a promontory formed by a loop of the Bailieborough River. (Davies 1948, 108)
51	N/A	E 266105 N 298215	Crocknahattin	House	Bailieborough House. House and demesne. Constructed on site of Bailieborough Castle. Depicted on 1st and 2nd ed. OS mapping. Largely destroyed but some ruins survive in modern forestry plantation at time of assessment.
52	CV028-009002	E 266105 N 298215	Crocknahattin	Castle Bawn	See CHC No. 50 for details.

53	N/A	E 266428 N 298305	Crocknahattin	Bridge	Bridge. Depicted on 1st ed. OS mapping with description "Wooden Bridge".
54	N/A	E 266399 N 298085	Crocknahattin	Bridge	Depicted on 1st and 2nd ed. OS mapping. Extant at time of assessment.
55	N/A	E 266598 N 297892	Drumbannon	Lime Kiln	Depicted on 1st ed. mapping. Not depicted on 2nd ed. mapping. No surface trace at time of assessment.
56	N/A	E 266524 N 297805	Drumbannon	Structure	Depicted on 1st and 2nd ed. OS mapping. Rectangular on 1st ed. and T shaped on 2nd ed. No surface trace at time of assessment.
57	N/A	E 266618 N 297873	Drumbannon	Quarry	Depicted on 1st and 2nd ed. OS mapping. No surface trace at time of assessment.
58	N/A	E 266684 N 297908	Drumbannon	Nursery	Rectangular enclosure. Depicted only on 2nd ed. OS mapping. No surface trace at time of assessment.
59	N/A	E 266606 N 297921	Drumbannon	Structure	Rectangular structure within tree lined plot. Depicted on 1st ed. mapping. Not depicted on 2nd ed. mapping. No surface trace at time of assessment.
60	N/A	E 268012 N 297119	Beckscourt	Structures	Beckscourt House. Courtyarded building within demesne.
61	N/A	E 267984 N 297126	Beckscourt	Limekilns	Limekilns x 2. Depicted on 1st ed. mapping. Not depicted on 2nd ed. mapping. No surface trace at time of assessment.
62	N/A	E 268233 N 297133	Beckscourt	Structure	Rectangular building. Depicted on 1st and 2nd ed. OS mapping. Building larger on 2nd ed. No surface trace at time of assessment.
63	N/A	E 267737 N 297686	Beckscourt	Structure	Depicted on 1st ed. mapping. Not depicted on 2nd ed. mapping. No surface trace at time of assessment.
64	CV034-042	E 268211 N 296677	Rakeevan	Ringfort	Raised circular area (int. diam. 33m) enclosed by a substantial earthen bank and a narrow, shallow fosse, both of which have been incorporated into the field boundary from SW-W-NW. Narrow break in bank at SE may represent original entrance.
65		E 268202 N 296201	Rakeevan	Gravel Pit	Depicted on 1st and 2nd ed. OS mapping. Extant at time of assessment.
66	CV034-061	E 268138 N 296665	Rakeevan	FulachtFia	Archaeological testing under licence 03E0242 was conducted in 2003. Two features of archaeological significance were exposed, a hearth and a fulachtfia spread Tara O'Neill,

67	CV034-060	E 268138 N 296564	Rakeevan	FulachtFia	Archaeological excavation under licence 03E0242 of a burnt spread that covered an area that measured 3.8m by 2.5m and had an average thickness of 0.3m. A second burnt spread was also resolved under the licence. This truncated and disturbed feature covered an area that measured 8m by 4.6m and varied in thickness from 0.1m to 0.5m. Linda Clarke
68	CV034-043	E 268894 N 296905	Rakeevan	Ringfort	Large raised circular area (int. diam. c. 58m) enclosed by a wide, low earthen bank and slight traces of a fosse. Original entrance not recognisable.
69	N/A	E 267251 N 296905	Tanderagee	Workhouse	Workhouse. First depicted on 2nd ed. OS mapping. Extant at time of assessment.
70	N/A	E 267777 N 296688	Tanderagee	Market House	Market House. Located at E end of Main St.
71	N/A	E 267554 N 296961	Tanderagee	Court House	Court House. Located at W end of Main St.
72	N/A	E 267609 N 297093	Tanderagee	Church	Methodist Church. Located
73	N/A	E 267653 N 296856	Tanderagee	Town	Bailieborough. Urban.
74	N/A	E 268053 N 296862	Corkish	Lime Kiln	Depicted on 1st ed. mapping. Not depicted on 2nd ed. mapping. No surface trace at time of assessment.
75	N/A	E 268298 N 296862	Corkish	Gravel Pit	Depicted on 1st ed. mapping. Not depicted on 2nd ed. mapping. No surface trace at time of assessment.
76	N/A	E 268201 N 297086	Corkish	Lime Kiln	Depicted on 1st ed. mapping. Not depicted on 2nd ed. mapping. No surface trace at time of assessment.
77	N/A	E 268385 N 296938	Corkish	Gravel Pit	Depicted on 1st ed. mapping. Not depicted on 2nd ed. mapping. No surface trace at time of assessment.
78	N/A	E 268421 N 296829	Corkish	Quarry	Depicted on 1st ed. mapping. Not depicted on 2nd ed. mapping. No surface trace at time of assessment.
79	N/A	E 268530 N 296754	Corkish	Structure	Depicted on 1st ed. mapping. Not depicted on 2nd ed. mapping. No surface trace at time of assessment.
80	N/A	E 268214 E 297068	Corkish	Structure	Rectangular buildings x 2 within roadside plot. Soldier/labourers cottage. First depicted on 2nd ed. OS mapping. Extant at time of assessment.
81	N/A	E 268232 N 297078	Corkish	Structure	See CHC 80 for details

82	N/A	E 268262 N 297109	Corkish	Structure	See CHC 80 for details
83	N/A	E 268290 N 297125	Corkish	Structure	See CHC 80 for details
84	N/A	E 268324 N 297121	Corkish	Structure	See CHC 80 for details
85	N/A	E 267548 N 297018	Tanderagee	Lime Kiln	Depicted on 1st and 2nd ed. OS mapping. Extant at time of assessment.
86	N/A	E 267276 N 299005	Lear	Structures	Rectangular buildings x 3. Depicted on 1st ed. mapping. Not depicted on 2nd ed. mapping. No surface trace at time of assessment.
87	N/A	E 267396 N 299047	Lear	Gravel Pit/Quarry	Depicted on 1st and 2nd ed. OS mapping. Noted as disused on 2nd ed. Location currently occupied by agricultural shed.
88	N/A	E 267412 N 299097	Lear	Structure	Rectangular buildings x 2. Depicted on 1st and 2nd ed. OS mapping. No surface trace at time of assessment.
89	N/A	E 267463 N 299240	Lear	Structure	Depicted on 1st and 2nd ed. OS mapping. No surface trace at time of assessment.
90	N/A	E 267518 N 299375	Lear	Structure	Rectangular buildings x 2. Depicted on 1st and 2nd ed. OS mapping. No surface trace at time of assessment.
91	N/A	E 267646 N 299224	Lear	Structures	Rectangular buildings x 2. Depicted on 1st and 2nd ed. OS mapping. No surface trace at time of assessment.
92	N/A	E 267636 N 299054	Lear	Structures	Rectangular buildings x 2. Depicted on 1st and 2nd ed. OS mapping. One ruined structure still extant at time of assessment.
93	N/A	E 267764 N 299017	Lear	Quarry	Depicted on 1st and 2nd ed. OS mapping. Noted as disused on 2nd ed. No surface trace at time of assessment.
94	N/A	E 267905 N 299107	Lear	Structures	Rectangular buildings x 4. Depicted on 1st and 2nd ed. OS mapping. Four separate structures within yard on 1st ed. C-shaped 3 sided structure with courtyard open to south on 2nd ed. Still extant at time of assessment.
95	N/A	E 267947 N 299055	Lear	Lime Kiln	Depicted on 1st ed. mapping. Not depicted on 2nd ed. mapping. No surface trace at time of assessment.
96	N/A	E 267976 N 299055	Lear	Lime Kiln	Depicted on 1st ed. mapping. Not depicted on 2nd ed. mapping. No surface trace at time of assessment.

97	N/A	E 268003 N 299210	Lear	Structures	Rectangular buildings x 2 in yard. Depicted on 1st ed. mapping. Not depicted on 2nd ed. mapping. No surface trace at time of assessment.
98	N/A	E 268058 N 299283	Lear	Structure	Rectangular buildings. Depicted on 1st and 2nd ed. OS mapping. 2 separate structures within yard on 1st ed. 3 structures with adjacent spring on 2nd ed. Still extant at time of assessment.
99	N/A	E 268108 N 299401	Lear	School	- Still extant at time of assessment.
100	N/A	E 268270 N 299345	Lear	Quarry	Depicted on 1st ed. mapping. Not depicted on 2nd ed. mapping. No surface trace at time of assessment.
101	N/A	E 268332 N 298851	Lear	Structures	Rectangular buildings x 4. Depicted on 1st and 2nd ed. OS mapping. Still extant at time of assessment.
102	N/A	E 268599 N 299201	Lisball	Structures	Rectangular buildings x 2. Depicted on 1st ed. mapping. Not depicted on 2nd ed. mapping. No surface trace at time of assessment.
103	N/A	E 268623 N 299110	Lisball	Structures	Rectangular buildings x 4. Depicted on 1st and 2nd ed. OS mapping. Still extant at time of assessment. Located on site of CHC No. 104.
104	CV028-035	E 268627 N 299086	Lisball	Ringfort	Raised circular area (int. diam. c. 36m) enclosed by a partly denuded, irregular earthen bank and the remains of a fosse infilled from NW-N-NE. Original entrance not recognisable. Internal area now forms part of a modern farmyard.
105	N/A	E 268027 N 299359	Lear	Lime Kiln	Depicted on 1st and 2nd ed. OS mapping. Still extant at time of assessment.
106	N/A	E 268088 N 299345	Lear	Structure	Rectangular building. Depicted on 1st and 2nd ed. OS mapping. No surface trace at time of assessment.
107	N/A	E 268270 N 299345	Lisball	Structure	Rectangular buildings x 2 within yard. First depicted on 2nd ed. OS mapping. No surface trace at time of assessment. Located on site of Quarry CHC No. 100.
108	N/A	E 267596 N 298254	Lear	Structure	Rectangular building. First depicted on 2nd ed. OS mapping. No surface trace at time of assessment. Located at NW boundary of Lakeland Dairies Bailieboro complex.
109	N/A	E 267644 N 298092	Lear	Structure	Rectangular building. Depicted on 1st ed. OS mapping only. No surface trace at time of assessment. Location now occupied by part of Lakeland Dairies Bailieboro complex.

110	N/A	E 267910 N 297997	Corkish	Lime Kiln	Depicted on 1st ed. OS mapping only. No surface trace at time of assessment.
111	N/A	E 268247 N 298153	Pottle Lower	Structures	Rectangular buildings. Three buildings depicted on 1st ed. and 1 building on 2nd ed. OS mapping. No surface trace at time of assessment.
112	N/A	E 268365 N 298401	Pottle Lower	Structure	Rectangular building. Depicted on 1st ed. OS mapping only. No surface trace at time of assessment.
113	N/A	E 268592 N 298174	Pottle Lower	Lime Kiln	Depicted on 1st ed. OS mapping only. No surface trace at time of assessment.
114	N/A	E 268651 N 298293	Pottle Lower	Structures	Rectangular buildings x 4. Depicted on 1st and 2nd ed. OS mapping. Still extant at time of assessment within modern farmyard.
115	N/A	E 268729 N 298414	Pottle Lower	Structures	Rectangular buildings x 4. Depicted on 1st and 2nd ed. OS mapping. Still extant at time of assessment within modern farmyard.
116	N/A	E 268771 N 298333	Pottle Lower	Lime Kiln	Depicted on 1st ed. OS mapping only. No surface trace at time of assessment.
117	N/A	E 268655 N 298084	Pottle Lower	Structure	Rectangular building. Depicted on 1st ed. OS mapping only. No surface trace at time of assessment.
118	N/A	E 268639 N 298018	Pottle Lower	Structure	Rectangular building. Depicted on 1st ed. OS mapping only. No surface trace at time of assessment.
119	N/A	E 268715 N 298306	Pottle Lower	Spring	Depicted on 1st and 2nd ed. OS mapping. Not accessible at time of assessment.
120	N/A	E 268624 N 297976	Pottle Lower	Structures	Rectangular buildings. One building depicted on 1st and three depicted on 2nd ed. OS mapping. Still extant at time of assessment within modern farmyard.
121	N/A	E 268069 N 298416	Pottle Lower	Ford and Foot Bridge	Depicted on 2nd ed. OS mapping only. No surface trace at time of assessment.
122	CV0.34-039	E 267576 N 296179	Tanderagee	Motte	A substantial motte enclosed by a wide, deep, partly waterlogged fosse. Motte comprises a roughly circular, high and steep-sided mound (diam. at base c.23m) divided into two unequal portions by a field boundary running NNW-SSE. The roughly circular summit (diam c. 10m N-S) is uneven, containing a number of large depressions.

Archaeological and Historical Background

Multi-period archaeological and cultural heritage remains are poorly represented in the immediate vicinity of the proposed development. This is perhaps explained by the limited occurrence of land suitable for arable farming in the immediate area of the proposed development. Several archaeological sites are present within the study area and include prehistoric, early medieval, medieval and post-medieval sites. The prehistoric remains include fulachtaí fia, the early medieval remains include several ringforts, the medieval remains include a possible church and graveyard and a motte and the post-medieval remains include a Castle and Bawn and a plantation town. The majority of the Cultural Heritage remains are 18th - 20th Century in date and include rural dwellings, urban commercial and residential buildings, municipal buildings, infrastructural and agricultural sites. Five licensed archaeological investigations have taken place within the study area and the results are presented in table 14.2.

Table 14.2 Licensed archaeological excavation that have taken place in the townlands within the study area.

Excavation Licence No/ Ministerial consent No	Location	Description
08E0555	Beckscourt	Monitoring was undertaken in conjunction with the development of a new Tesco supermarket in the townland of Beckscourt, bounded on the south-east by Thomas Street and on the south-west by the rear of properties fronting on to Main Street, Bailieborough, Co. Cavan. Prior to development the site was primarily used for pasture. There are no RMP sites in the immediate area. A geophysical survey was undertaken at the site in March 2007 (licence number 07R0017) in response to a request for further information by Cavan County Council. This survey did not identify any significant evidence for potential archaeological features; however, monitoring of groundworks was recommended, as a significant portion of the site was heavily waterlogged and unsuitable for survey. Monitoring was undertaken between 10 July and 7 October 2008, as required by the construction programme. The area was systematically stripped of topsoil, peat and marl deposits to varying depths, up to a maximum of 2.5m below existing ground level, within the footprint of the development. No archaeological features or deposits were identified; no artefacts were retrieved. Teresa Bolger, for Margaret Gowen & Co. Ltd, 27 Merrion Square, Dublin 2.
03E0242	Rakeevan	Archaeological testing under licence 03E0242 was conducted in 2003. Two features of archaeological significance were exposed, a hearth and a fulacht fia spread Tara O'Neill.
03E0242	Rakeevan	Archaeological excavation under licence 03E0242 of a burnt spread that covered an area that measured 3.8m by 2.5m and had an average thickness of 0.3m. A second burnt spread was also resolved under the licence. This truncated and disturbed feature covered an area that measured 8m by 4.6m and varied in thickness from 0.1m to 0.5m. Linda Clarke

06E0614	Baillieborough (Urban) Tanderagee	Monitoring of excavations associated with the north-east broadband project, Phase II, in Baillieborough was carried out from August to October 2006. The excavation phase of the project involved the opening of a series of trenches throughout the town centre and its hinterland. All of the trenches were located along roads, either in the carriageway proper or in the adjoining verge or footpath. There were no river crossings other than at existing bridges. The trenches were 0.6m wide and were excavated to a standard depth of 0.9m in carriageways and 0.6m in verges/footpaths. Junction boxes (1.25m ²) were excavated where two or more trenches intersected, and at regular intervals along long straight sections. A total of 4987m of trenches were excavated during the course of the project. No archaeological features, finds or deposits were uncovered. Dominic Delany, Dominic Delany & Associates.
---------	---	---

Ordnance Survey Maps and Aerial Photographs

Figures 14.3- 14.6 show snapshots of the proposed development site as recorded by the Ordnance Survey of Ireland in the recent past and going back into the early 19th century when the first edition OS maps were surveyed. No archaeological features were recorded throughout this period within the area proposed for development.

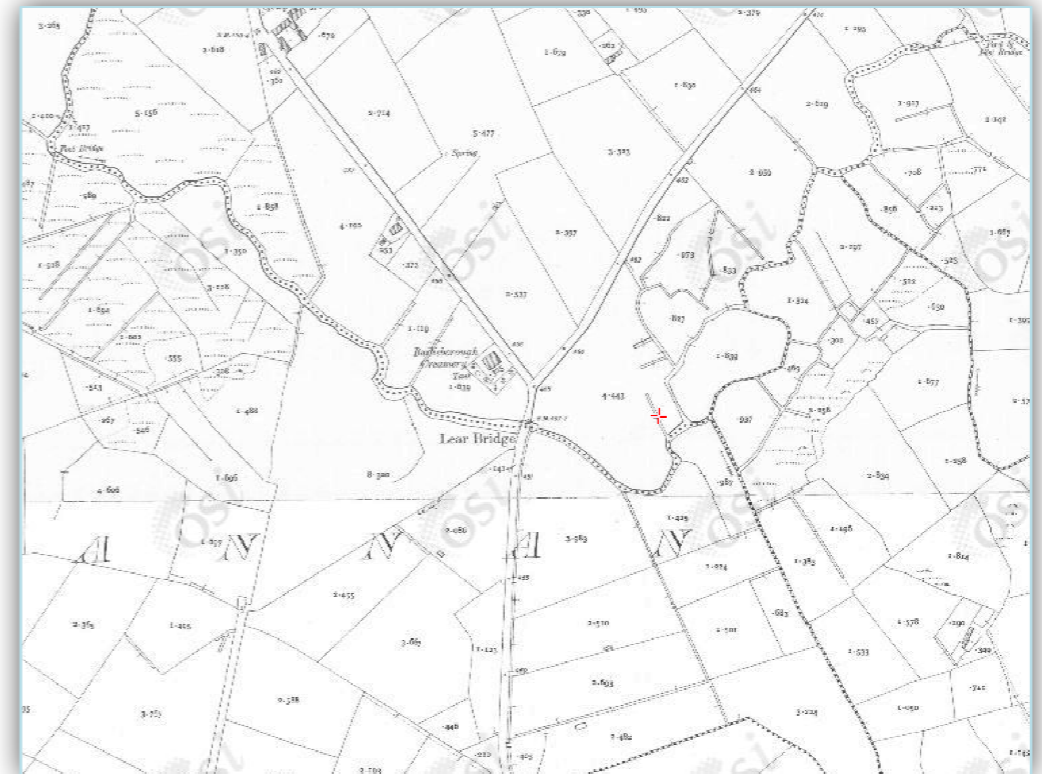
Figure 14.3 OSI aerial photograph from 2005. No cultural heritage features were identified during the assessment of the available aerial photographs.



Figure 14.4 OSI aerial photograph from 2000.

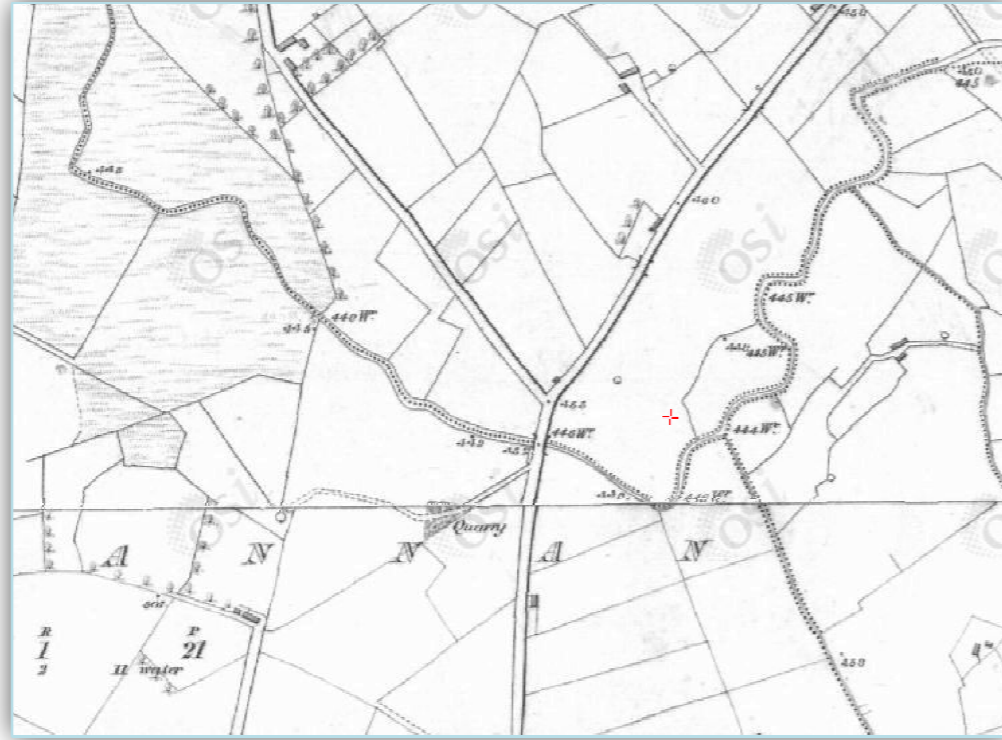


Figure 14.5 25 inch OS map showing the proposed development in the late 19th century.



For inspection purposes only.
Consent of copyright owner required for any other use.

Figure 14.6 6 inch OS map showing the same area as Figure 14.4 but this time as surveyed in the 1830s.



Site Walkover Survey Results

The site walkover survey was carried out on Monday 3rd February 2014. The physical area of the existing Lakeland Dairies Bailieboro manufacturing complex was inspected as were relevant cultural heritage sites within an adjoining zone identified during the desk based assessment. The area of the proposed development was fully accessible. The lands adjoining the proposed develop were largely accessible although extensive wetland areas were not accessible on foot. The area of the proposed development is comprised of several discontinuous plots of lands within and adjacent to the existing Lakeland Dairies Bailieboro complex. The proposed development for the most part will be located in brownfield areas where substantial development has already taken place. However, in one corner of the proposed development will be situated in Greenfield area where no previous development has taken place.

14.4 Characteristics of the Proposed Development

The proposed development will consist of the following:

- An extension to the existing Dryer facility to contain a new Dryer Plant with a total floor area of 3,516m² on 5 floors with a total height above ground level of 40.00m.
- The new dryer building will incorporate a full height fire escape stairs and full height lift shaft.

- An extension to the existing Dryer building to contain 2 no. Evaporators with a total floor area of 1,325m² on 3 floors and occasional access platforms, with a total height above ground level of 31.27m.
- An extension to the existing milk powder silo area to incorporate new milk powder silos and milk powder handling with a total floor area of 387m² on 3 floors, with a total height above ground level of 24.21m.
- An extension to the existing Bagging Area to contain additional bagging area and electrical control panels with a total floor area of 170 m² on two floors, highest height above ground level of 10.96m.
- All associated local underground drainage and miscellaneous site works including a 480m³ covered water tank.
- The external metal cladding of all new construction will match the existing colour and type of existing metal cladding.

14.5 Potential Impacts

The proposed development at Lakeland Dairies Bailieboro will have, for the most part, no impact on known sites of Cultural Heritage significance. No surface trace of archaeological remains or deposits were identified in any of the discontinuous areas relating to the current application.

A single site of Cultural Heritage significance, (CHC No. 9) a pair of early 20th century rectangular structures, will be directly impacted by the proposed development. These sites have been recently demolished and are now no longer extant at ground level. There will be no negative physical or visual impacts on the Cultural Sites identified within the study area by the proposed development.

A small number of cultural heritage sites were identified in the areas adjoining, the area of the proposed development. These remains include field boundaries, ditches and walls. No sites listed on the SMR, RMP, NIAH or RPS are situated within the footprint of the proposed development.

14.6 Mitigation Measures

The proposed development at Lakeland Dairies Co-operative Society Limited covers a large area. Much of this area is situated in close proximity to the Blackwater River. Given the large area to be effected by the proposed development and the greenfield nature of some of this area, a programme of archaeological testing to determine the presence/ absence of archaeological features is determined to be the most appropriate measure to ensure against negative impacts on the archaeological and cultural heritage.

The topsoil stripping phase of construction should be archaeologically monitored by a licensed archaeologist. In the event of archaeological features being identified their nature and extent should be recorded and a report made to the local authority.

This should include recommendations regarding the mitigation of further impacts. These may include measures to ensure preservation in situ or preservation by record.

14.7 Predicted Impacts with Mitigation

The archaeological monitoring of the site will ensure that previously unknown archaeological features that may be present will be protected in line with local and national heritage protection policies.

14.8 The “Do-Nothing” Scenario

In the event of the development not proceeding previously unrecorded archaeological features will not be disturbed.

14.9 The “Worst-Case” Scenario

If the development proceeded without archaeological monitoring taking place previously unrecorded archaeological features would be directly impacted.

14.10 Monitoring

No further investigations required once the archaeological monitoring works are complete at the beginning of the construction phase of the development.

*For inspection purposes only.
Consent of copyright owner required for any other use.*