

# **WATERFORD CITY & COUNTY COUNCIL**

COMHAIRLE CATHRACH & CONTAE PHORT LÁIRGE



**Comhairle Cathrach  
& Contae Phort Láirge**  
Waterford City  
& County Council

ANNUAL ENVIRONMENTAL REPORT 2014

MATERIALS RECOVERY FACILITY

SHANDON, DUNGARVAN  
CO. WATERFORD

Waste Licence Register No. W0189-01

Report Compiled by:

Mr Michéal Fahey, Facility Manager, Materials Recovery Facility

Mr Paul Carroll, Executive Scientific Officer, Adamstown Laboratory

## Table of Contents

### Introduction

1.	Reporting Period	5
2.	Waste Activities Carried Out at the Facility	5
3.	Quantities and Composition of Material Received, Disposed of and Recovered during 2014	6
4.	Environmental Monitoring	6
4.1	Foul Water	8
4.2	Noise	14
5.	Schedule of Environmental Objectives and Targets for the forthcoming year.	17
6.	Report on the Progress towards Achievement of the Environmental objectives and targets undertaken in the previous year.	18
7.	Nuisance Monitoring	19
8.	Full Title and a written summary of any procedures developed by the licensee in the year which relates to the facility operation	20
9.	Reported incident and complaints summaries	27
10.	Management and Staffing Structure of the Facility	27
11.	Report on Training of Staff	27

## **List of Appendices**

- |                   |   |
|-------------------|---|
| <b>Appendix A</b> | Quantities and Composition of Material Received, Disposed of, and Recovered during 2014 |
| <b>Appendix B</b> | Map of Monitoring Locations   |
| <b>Appendix C</b> | Integrity of Bunds  |
| <b>Appendix D</b> | Management Structure  |
| <b>Appendix E</b> | AER Returns Workbook  |

## **Introduction**

Waterford County Council was granted a Waste Licence (Ref W0189-01) by the Environmental Protection Agency on the 22<sup>nd</sup> March 2004 for the acceptance of non-hazardous household, commercial and industrial sourced dry recyclable wastes including; paper, cardboard, natural and manmade fibres, glass, plastics, ferrous and non-ferrous metals at the Materials Recovery Facility in Shandon, Dungarvan, County Waterford. Material was not accepted at the Materials Recovery Facility until 2005. This is the ninth Annual Environmental Report for the facility and includes the monitoring period 1<sup>st</sup> January 2014 – 31<sup>st</sup> December 2014. The report has been prepared in accordance with Condition 11.4 and Schedule F of the Waste Licence.

## 1. Reporting Period

This is the tenth Annual Environmental Report for the Materials Recovery Facility, which covers the period 1<sup>st</sup> January 2014 to 31<sup>st</sup> December 2014.

## 2. Waste Activities carried out at the Facility

Part 1 of the Waste Licence details the activities authorised:

### Waste Management Act 1996: Third Schedule

**Class 12. Repackaging prior to submission to any activity referred to in a preceding paragraph of this Schedule.**

This activity is limited to the bulking and transfer of waste off-site.

**Class 13. Storage prior to submission to any activity referred to in a preceding paragraph of this Schedule, other than temporary storage, pending collection, on the premises where the waste concerned was produced:**

This activity is limited to the storage of the waste prior to bulking and transfer off-site.

### Waste Management Act, 1996, Fourth Schedule

**Class 2. Recycling or reclamation of organic substances, which are not used as solvents (including composting and other biological transformation processes):**

This activity is limited to the recovery of dry recyclables specified in Schedule A: Waste Acceptance, of the licence.

**Class 3. Recycling or reclamation of metals and metal compounds:**

This activity is limited to the segregation of steel and metals prior to recovery off-site.

**Class 4. Recycling or reclamation of other inorganic materials:**

This activity is limited to the segregation of glass, textiles and other inert waste prior to recovery off-site.

**Class 11. Use of waste obtained from any activity referred to in a preceding paragraph of this Schedule:**

This activity is limited to the handling of dry recyclables specified in Schedule A: Waste Acceptance, of the licence.

**Class 13. Storage of waste intended for submission to any activity referred to in a preceding paragraph of this Schedule, other than the temporary storage, pending collection, on the premises where such waste is produced:**

This activity is limited to the storage of the waste prior to recovery on or off-site.

**3. Quantity and Composition of Waste received, disposed of and removed during the reporting period and each year previous:**

The quantity and composition of waste received, disposed of and removed for the reporting period 1<sup>st</sup> January 2014 – 31<sup>st</sup> December 2014 is attached in Appendix A.

**4. Environmental Monitoring**

**Introduction**

This report is a compilation of environmental monitoring carried out on behalf of Waterford County Council at the Materials Recovery Facility during 2014.

Monitoring of waters and noise was carried out in accordance with the waste licence (W0189-01), condition 8, and schedule D. Drawing of monitoring locations attached.

Inspections of the foul water emission location were conducted on four dates in 2014.

Noise monitoring was conducted at two locations on the boundary of the site.

Drawing of monitoring locations is attached as Appendix B.

## Section 4.1

# Foul Water Monitoring

### **4.1.1 Introduction**

Inspections of the foul water emission location were conducted on four dates in 2014. However, no samples were taken as there was no flow on any of the sampling dates or throughout the year. The licence directs that *sampling is to coincide with discharge of floor wash-down*. There were no floor wash-downs during the year.



## ***Materials Recovery Facility, Dungarvan Discharge to Sewer Monitoring Report***

<i>Emission</i>	<i>Parameter</i>	<i>Result</i>
<i>Limit</i>	<i>SAMPLING POINT</i>	SW1 MRF Dungarvan
	<i>DATE OF SAMPLING</i>	13-Mar-14
	<i>TIME OF SAMPLING</i>	11:00:00
	<i>SAMPLE NUMBER</i>	1
	<i>SAMPLED BY</i>	
	<i>TESTING LABORATOR</i>	
<i>6-9</i>	<i>pH</i>	
<i>400</i>	<i>BOD mg/l</i>	
<i>1000</i>	<i>COD mg/l</i>	
<i>250</i>	<i>Suspended Solids</i>	
<i>10</i>	<i>Mineral oils mg/l</i>	
<i>15 - 30</i>	<i>Temperature deg C</i>	
<i>400</i>	<i>Sulphate</i>	
<i>100</i>	<i>Ammoniacal</i>	
<i>100</i>	<i>Detergents mg/l</i>	
	<i>Flow</i>	0

***Remarks: No flow present***

23 July 2014

***Signed off on behalf  
of laboratory:***

Paul Carroll

## ***Materials Recovery Facility, Dungarvan Discharge to Sewer Monitoring Report***

<b><i>Emission</i></b>	<b><i>Parameter</i></b>	<b><i>Result</i></b>
<b><i>Limit</i></b>	<b><i>SAMPLING POINT</i></b>	SW1 MRF Dungarvan
	<b><i>DATE OF SAMPLING</i></b>	15-Apr-14
	<b><i>TIME OF SAMPLING</i></b>	11:00:00
	<b><i>SAMPLE NUMBER</i></b>	2
	<b><i>SAMPLED BY</i></b>	PC
	<b><i>TESTING LABORATOR</i></b>	ADAMSTOWN
<b><i>6-9</i></b>	<b><i>pH</i></b>	
<b><i>400</i></b>	<b><i>BOD mg/l</i></b>	
<b><i>1000</i></b>	<b><i>COD mg/l</i></b>	
<b><i>250</i></b>	<b><i>Suspended Solids</i></b>	
<b><i>10</i></b>	<b><i>Mineral oils mg/l</i></b>	
<b><i>15 - 30</i></b>	<b><i>Temperature deg C</i></b>	
<b><i>400</i></b>	<b><i>Sulphate</i></b>	
<b><i>100</i></b>	<b><i>Ammoniacal</i></b>	
<b><i>100</i></b>	<b><i>Detergents mg/l</i></b>	
	<b><i>Flow</i></b>	0

***Remarks: No flow present***

23 July 2014

***Signed off on behalf  
of laboratory:***

Paul Carroll

## ***Materials Recovery Facility, Dungarvan Discharge to Sewer Monitoring Report***

<b><i>Emission</i></b>	<b><i>Parameter</i></b>	<b><i>Result</i></b>
<b><i>Limit</i></b>	<b><i>SAMPLING POINT</i></b>	SW1 MRF Dungarvan
	<b><i>DATE OF SAMPLING</i></b>	22-Aug-14
	<b><i>TIME OF SAMPLING</i></b>	11:30:00
	<b><i>SAMPLE NUMBER</i></b>	3
	<b><i>SAMPLED BY</i></b>	PC
	<b><i>TESTING LABORATOR</i></b>	ADAMSTOWN

<b><i>6-9</i></b>	<b><i>pH</i></b>	
<b><i>400</i></b>	<b><i>BOD mg/l</i></b>	
<b><i>1000</i></b>	<b><i>COD mg/l</i></b>	
<b><i>250</i></b>	<b><i>Suspended Solids</i></b>	
<b><i>10</i></b>	<b><i>Mineral oils mg/l</i></b>	
<b><i>15 - 30</i></b>	<b><i>Temperature deg C</i></b>	
<b><i>400</i></b>	<b><i>Sulphate</i></b>	
<b><i>100</i></b>	<b><i>Ammoniacal</i></b>	
<b><i>100</i></b>	<b><i>Detergents mg/l</i></b>	
	<b><i>Flow</i></b>	0

***Remarks: No flow present***

23 July 2014

***Signed off on behalf  
of laboratory:***

Paul Carroll

## ***Materials Recovery Facility, Dungarvan Discharge to Sewer Monitoring Report***

<i>Emission</i>	<i>Parameter</i>	<i>Result</i>
<i>Limit</i>	<b><i>SAMPLING POINT</i></b>	SW1 MRF Dungarvan
	<b><i>DATE OF SAMPLING</i></b>	26-Nov-14
	<b><i>TIME OF SAMPLING</i></b>	11:30:00
	<b><i>SAMPLE NUMBER</i></b>	4
	<b><i>SAMPLED BY</i></b>	PC
	<b><i>TESTING LABORATOR</i></b>	ADAMSTOWN

<b><i>6-9</i></b>	<b><i>pH</i></b>	
<b><i>400</i></b>	<b><i>BOD mg/l</i></b>	
<b><i>1000</i></b>	<b><i>COD mg/l</i></b>	
<b><i>250</i></b>	<b><i>Suspended Solids</i></b>	
<b><i>10</i></b>	<b><i>Mineral oils mg/l</i></b>	
<b><i>15 - 30</i></b>	<b><i>Temperature deg C</i></b>	
<b><i>400</i></b>	<b><i>Sulphate</i></b>	
<b><i>100</i></b>	<b><i>Ammoniacal</i></b>	
<b><i>100</i></b>	<b><i>Detergents mg/l</i></b>	
	<b><i>Flow</i></b>	0

***Remarks: No flow present***

23 July 2014

***Signed off on behalf  
of laboratory:***

Paul Carroll

## **Section 4.2**

# **Noise Measurement**

## **4.2. Noise Measurement Report**

### **4.2.1 Introduction**

A noise survey was undertaken on the 12/6/14 in the vicinity of Waterford City & County Council's Materials Recovery Facility at Shandon, Dungarvan. The following location was surveyed as shown on the attached drawing, Appendix 1.

#### **N1 - At boundary 40m east of MRF building.**

Measurements were taken using a Type 1 sound level meter (Cirrus Model CR:831A) calibrated to traceable national standards. The meter was further calibrated on site prior to use. The monitoring period was thirty minutes for broadband noise measurements and at least nine minutes for frequency analysis measurements. Sounds noted during the sound measurements were birdsong; vehicles and passing traffic.

### **4.2.2 Results**

#### **4.2.2.1 Broadband measurements**

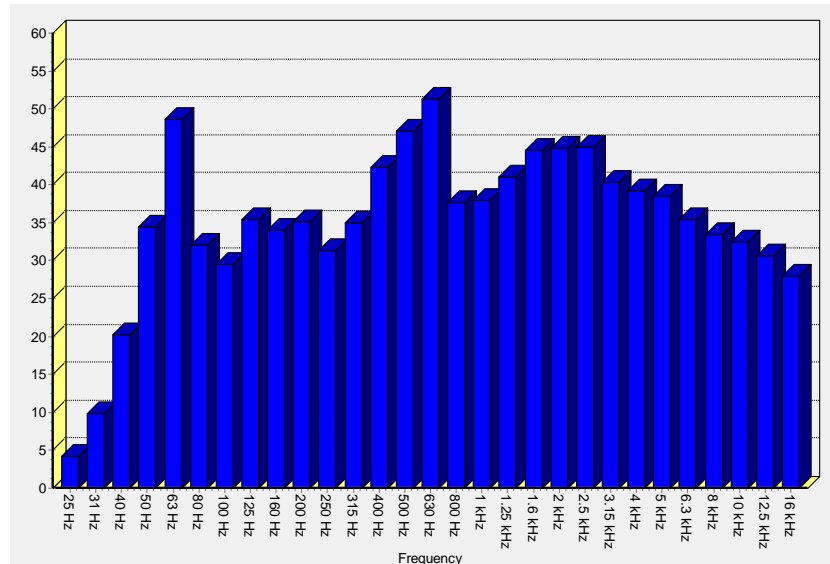
Table 1 Broadband measurements.

Date	12/6/14
Time	09.51
Run Time	00:30:00
Leq	66.0 dBA
Lep,d	54 dBA
LAE	98.4 dBA
LAFmax	92.1 dBA
Peak	106.0 dBC
L1.0	73.8 dBA
L10.0	66.7 dBA
L50.0	60.2 dBA
L90.0	92.0 dBA
L95.0	45.2 dBA
L99.0	44.4 dBA
Range	50-110 dB

### 4.2.2.2 Frequency analysis

One-third octave frequency analysis was conducted at the location above. The monitoring period was at least nine minutes. Results are presented below.

**Fig 1. Location N1. 1/3 octave analysis A weighted**



### 4.2.3 Comments

The  $L_{Aeq}$  broadband measurements (table 1) was 66 dBA which exceeded the facility licence daytime noise emission limit of 55 dB(A) (30 minutes).

An isolated tone at 63 Hz was identified in the octave band measurement at location N1.

### Conclusions

Inspections of the foul water emission location were conducted on four dates in 2014. However, no samples were taken as there was no flow on any of the sampling dates or throughout the year. The licence directs that *sampling is to coincide with discharge of floor wash-down*. There were no floor wash-downs during the year.

Noise monitoring was conducted at the boundary of the site. Noise measured between 09.51 and 10.21 on 12/6/14 exceeded the daytime noise emission limit of 55 dB  $L_{Aeq}$  30 mins. This is likely to have been transitional as all previous noise measurements have been in compliance with the 55dB limit. No complaints have been received for the facility. Further noise monitoring will indicate trends for noise.

In summary, there was no evidence of significant impact on the environment due to this facility

**5. Schedule of Environmental Objectives and Targets for the forthcoming year.**

**Aspects associated with significant impacts**

**Objective 1 – Air-** Minimisation of odour associated with operation of facility

**Target 1.1** Less than 10 complaints per year.

**Objective 2 –Water-** Minimisation of impact on ground and surface water quality

**Target 2.1** No breaches of surface water emission criteria. – (Ongoing)

**Objective 3 – Water-** Minimisation of impact on ground and surface water quality

**Target 3.1 –.** No uncontrolled spillage to ground or surface waters. – (Ongoing)

**Objective 4 – Land and Soil-** Minimisation of impact of facility on land and soil

**Target 4.1-** No spillages to land or soil-(Ongoing)

***Resource depletion***

**Objective 5** Minimise power usage commensurate with proper operation of facility

**Target 5.1** To be reviewed in 2015.

***Local environmental and community issues***

**Objective 6-** Complaints- Minimise complaints by members of public regarding litter, noise, dust, odours, traffic

**Target 6.1** Less than 20 complaints per year

**Objective 7-**Response to complaint- Respond quickly to any complaints

**Target 7.1** Acknowledge 90% of complaints within 2 working days; follow up with report of ameliorative action taken, within 5 working days. (2014)

Acknowledge 100% of complaints within 2 working days, follow up with report of ameliorative action taken, within 5 working days. (2014)



*Legal and other requirements*

**Objective 8** Compliance with licence requirements

**Target 8.1** Full Compliance (Ongoing)

**6. Report on the Progress towards Achievement of the Environmental objectives and targets undertaken in the previous year.**

*Aspects associated with significant impacts*

**Objective 1 – Air-** Minimisation of odour associated with operation of facility

**Target 1.1** - Less than 10 complaints per year

2014 - No complaints received. Target achieved.

**Objective 2 –Water-**Minimisation of impact on ground and surface water.

**Target 2.1** – No breach of surface water emissions criteria.

2014 - No breaches. Target achieved.

**Objective 3 – Water-**Minimisation of impact on ground and surface water.

**Target 3.1** – No uncontrolled spillages to ground or surface waters.

2014 - No spillages. Target achieved

**Objective 4 – Land and Soil –** Minimisation of impact of facility on land and soil.

**Target 1.1** – No spillages to land or soil.

2014 - No spillages. Target achieved

*Resource Depletion*

**Objective 5** – Minimise power usage commensurate with proper operation of facility.

**Target 5.1** – 2014 – Max demand complied with, reduction from 600 amps to 175 amps.

Target achieved.

*Local environmental and community issues*

**Objective 6-** Complaints- Minimise complaints by members of public regarding litter, noise, dust, odours, traffic

**Target 6.1** Less than 20 complaints per year

2014 - No complaints. Target achieved

**Objective 7 –** Response to complaint- Respond quickly to any complaints

**Target 7.1** Acknowledge 90% of complaints within 2 working days, follow up with report of ameliorative action taken, within 5 working days.

Acknowledge 100% of complaints within 2 working days; follow up with report of ameliorative action taken, within 5 working days.

2014 - No complaints. Target achieved.

*Legal and other requirements*

**Objective 8** Compliance with licence requirements

**Target 8.1** Full Compliance.

2014 – Full Compliance. Target achieved.

**7. Nuisance Monitoring**

Nuisance Control is carried out in accordance with Condition 7 and 8.12 of the Waste Licence. As the facility is only open one week in four, nuisance monitoring has been scaled back in accordance with production schedules.

## **Vermin Control**

A pest control company sets poison in specially manufactured bait boxes on the site every six weeks all year round.

Vermin control was carried out in accordance with Condition 11.5 of the waste licence. Vermin activity was very low for the reporting period due to implementation of a good eradication programme.

## **8. Full title and a written summary of any procedures developed during the reporting period**

### **8.1 Emergency Procedures**

#### *8.1.1 Purpose*

The purpose of this document is to set out the procedure and plans to be followed in the event of an emergency.

Procedures are designed to ensure the safety of people in buildings during emergencies by co-ordinating and controlling building evacuations until the appropriate emergency services arrive. An emergency can be defined as any event, natural or man-made, which by its occurrence endangers the lives of staff and visitors within the building and which requires an immediate response.

#### *8.1.2 Reference Documents*

Safety Statement

#### *8.1.3 Responsibilities*

#### *8.1.4 Management Responsibility*

The persons responsible for the implementation and management of emergency evacuation procedures are those with appropriate management authority over the building. For these procedures the responsible person will be the Project Leader/Senior Engineer.

*The Facility Manager is responsible for:*

- a) The appointment of a Fire Warden and deputy.
- b) Ensuring that resources are available to all wardens to fulfil their role.
- c) Ensuring that Fire Wardens' recommendations are implemented.
- d) Ensuring the effective implementation and management of the emergency evacuation procedures in buildings under his control.

*Fire Wardens are responsible for:*

- a) Carrying out their duties in the event of an emergency as described in these procedures.
- b) Attending a debrief following any emergency evacuation drill.
- c) Reporting to the Facility Manager any observed fire or evacuation hazards or unsafe conditions present within the plant or as identified during a fire drill.
- d) Conducting regular fire and evacuation safety inspections.
- e) Attending Fire Warden training at least bi-annually.
- f) The regular inspection and maintenance of all fire alarms.
- g) Activating the fire alarm to enable a drill to be conducted.

*Team Leaders are responsible for:*

- a) Inducting new members of staff around the building pointing out room exits, the location of escape stairwells and final exit points and assembly points.
- b) Instructing their staff to evacuate immediately in the event of an alarm activation.
- c) Informing Fire Wardens/Gardai/Fire Brigade of any known missing persons.

*The Health and Safety Officer is responsible for:*

- a) The co-ordination, implementation and review of the Emergency and Evacuation Procedure.
- b) Liaison with the emergency services to maintain emergency preparedness.
- c) Co-ordinating the training programme for Fire Wardens.
- d) Maintaining a master list of Fire Wardens and schedule evacuation drills.
- e) Organising a Fire Warden debrief following scheduled drills.

#### 8.1.5 *Fire Alarm System*

NB: The building fire alarm is automatically activated where more than one detector is activated or where a “Break Glass” unit is activated.

#### 8.1.6 *Emergency Procedure*

##### 8.1.6.1 *Any person discovering a fire shall:*

- a) Activate the nearest fire alarm “Break Glass” unit IMMEDIATELY.
- b) Extinguish the fire if it is safe to do so (no more than one extinguisher to be operated. If fire has not been extinguished, evacuate immediately).
- c) Call emergency number 999 or reception on Extn 2333 and make your way to the Fire Assembly Point.
- d) Provide details to reception/Fire Brigade of exact location and extent of fire.

##### 8.1.6.2 *On hearing the fire alarm, building occupants shall:*

- a) Evacuate the building immediately via the nearest available fire exit.
- b) Comply with all directions given by Fire Wardens.
- c) Where possible assist less able bodied persons/visitors to evacuate to safety.
- d) Proceed to the “Fire Assembly Point” for the building.
- e) Remain outside the building until the all clear is given.

8.1.6.3 *On hearing the fire alarm, Fire Wardens shall:*

- a) Don high visibility “Fire Warden” vests.
- b) Enter all accessible rooms on their floor and instruct occupants to evacuate the building, closing all doors whilst progressing through the floor.
- c) Direct building occupants to their nearest emergency escape routes.
- d) Proceed to the “Fire Assembly Point” when the floor has been evacuated.
- e) Take control at the assembly point and ensure that no-one re-enters the building until the all clear has been given by security/Fire Brigade and the emergency stood down.
- f) Attend the post-evacuation debrief and report any particular difficulties encountered during the evacuation.

**8.1.7 Evacuation Drill Frequency**

Each building shall conduct at least one evacuation drill per year. Key Holders List;

Name	Contact No.
1. AA Security Services	(058)-24355
2. Michéal Fahey	(086)-170-3780
3. Bernard Moloney	(086)-805-7670

**8.2 Freedom of Access to Information on the Environment**

The European Council Directive 90/313/EEC on the *Freedom of Access to Information on the Environment* recognises the significance of the public’s access to information relating to the environment. At present, copies of all documents and correspondence relating to Waste Licence W0189-01 are held at the Materials Recovery Facility.

A communications programme will be put in place as required under condition 2.4.1 of the Waste Licence to ensure that members of the public can obtain information concerning the environmental performance of the Dungarvan Materials Recovery Facility. This in turn will address any local community concerns and allow the public the opportunity to provide feedback on the facility.

The Facility Manager will be responsible for the implementation of this programme, which shall form part of the routine operation and management of the facility. Further support will be provided from the Environment Section of Waterford County Council if required.

## **Programme**

### *Information to be provided at the Facility*

The following information will be available for inspection at the Materials Recovery Facility, and will be maintained by the Facility Manager.

- Map of the Facility showing all environmental monitoring points
- Current Waste Licence for the Facility
- All records relating to the Facility
- Nuisance Inspection
- Integrity Tests of Bunds
- Complaints Register
- Incidents Register
- Environmental Monitoring Records (Groundwater, Surface water and Noise Data).
- Emergency Response Procedure
- Programme for the control and Eradication of Vermin
- Annual Environmental Report
- Visitors Book

The Waste Acceptance hours under condition 1.8.1 of the Waste Licence are

Monday – Saturday      0800-2000

All visitors are required to sign a Visitors Book at the site office outlining their reason for visiting. Unauthorised personnel are not allowed access to the site.

Members of the public may arrange a site visit by contacting the Facility Manager prior to their visit. For Health and Safety reasons all visitors must have appropriate clothing (High Vis-jacket, Safety Helmets Walking boots/Wellingtons). The Facility Manager or suitable qualified persons shall accompany all visitors on site visits.

## **Written Requests for Information**

All requests concerning the environmental performance of the facility should be made in writing to:

Facility Manager,  
South East Region Materials Recovery Facility,  
Shandon,  
Dungarvan,  
Co. Waterford

The Facility Manager shall copy all requests to:

Senior Engineer,  
Environment Section,  
Waterford County Council,  
Civic Offices,  
Dungarvan,  
Co. Waterford

Each request should indicate the name, address and contact telephone number of the concerned party, an outline of the required information and the manner in which they require the information i.e. copy of record, e-mail etc.

Waterford County Council shall make replies in writing within twenty working days of receiving the written request.

The information required shall be issued in paper format unless otherwise requested by the concerned party. Requests that require information in digital format may require more time than the twenty working days as outlined previously.

If requested, Waterford County Council will provide a clear explanation of the information provided.

- 8.2.1 If the concerned party requests the examination of a particular report/document relating to the facility, then it will be made available for viewing at the Materials Recovery Facility.

### ***Media Requests***

The Director of Services within the Environment Section of Waterford County Council shall nominate a liaison person to respond to requests made by the media for information relating to the environmental performance of the facility.

### ***Feedback from the public***

The Facility Manager will record any comments or suggestions made by the public during their visits and the opportunity will also be available to submit a written comment to the Materials Recovery Facility. Copies of such minutes or submissions will be kept in a register by the Facility Manager and will also be copied to the Environment Section, for the attention of the Senior Engineer. If requested, a reply will be provided by the Council within twenty working days.

### **Emergency Response Procedures Scope**

The Emergency Response Procedures apply but is not limited to the following incidents occurring:

- Fire / Explosions
- Spillages
- Environmental Pollution
- Injury or serious accident to persons
- Any other incident, which may pose a significant threat to persons or the environment.

### **Responsibility**

1. The Facility Manager is responsible for the implementation of the Emergency Response Procedure and for the training of all Materials Recovery Facility personnel and contractors in effective emergency response procedures.
2. In the event of a major fire or an explosion, the Monitoring Station alarm will be activated. The Senior Rostered Fire Officer will be notified immediately via the Regional Fire Department.



3. In the event of a serious accident or injury to a person the ambulance service should be contacted.

4. In the event of other incidents e.g. spillages or environmental pollution the Senior Environment Engineer will be notified and will assume responsibility along with the Facility Manager.

### **Procedure**

In the event of an accident occurring the following procedure will be adopted:

- Evacuate the immediate area within the site if necessary
- Inform other site users
- Remain upwind of any hazard area
- Contact site office and advise in detail of the emergency
- Ensure entrance/exit gate is not obstructed
- Contact fire brigade, ambulance, Gardaí, and / or Senior Engineer, Waterford County Council as required by dialing 999 or 112
- If incident occurs outside office hours an emergency telephone contact number will be provided on the site notice board. The Materials Recovery Facility also has on-site security and drive-by security.
- Personnel shall report to the designated assembly point on the Materials Recovery Facility
- All areas affected by the incident shall remain closed until given the all-clear by an authorised person

In the event of a spillage, the Facility Manager shall apply a suitable absorbent material to contain and absorb any spillage at the facility. Once contained, the Facility Manager shall have regard to the Corrective Action Procedure.

In the event of a serious threat to the environment, the Facility Manager shall take all necessary short-term action to minimise any further impact and allow the Corrective Action Procedure.

## **Records**

Details of any incident will be recorded in a written register, which will be maintained at the site office

### **9. Reported incident and complaints summaries**

No Incidents or Complaints occurred during the reporting period.

### **10. Management and Staffing of the Facility**

Management and staffing of the facility is attached in Appendix D.

### **11. Report on training of staff**

The Facility Manager has completed the Fás Waste Management Course. All Waterford County Council employees have participated in the Fás Safe Pass Course. All staff have been trained on how to respond if a fire occurs. PEMAC (Preventive Maintenance Program) has also been implemented at the Materials Recovery Facility. This is a software program which controls the day-to-day running of the MRF.

# **APPENDIX A**

## **Quantity and Composition of Material Received, Disposed of and Recovered during 2014**



## Total Incoming Tonnage Per Customer 2014

	Jan-14	Feb-14	Mar-14	Apr-14	May-14	Jun-14	Jul-14	Aug-14	Sept-14	Oct-14	Nov-14	Dec-14
<b>Waterford Co. Co</b>	171.86	163.00	74.72	137.63	120.54	130.28	195.05	106.22	208.13	98.44	206.18	113.87
<b>Dungarvan CAS</b>	6.82	7.64	6.76	7.98	11.82	9.00	7.70	8.36	8.70	10.66	7.26	7.18
<b>Dungarvan T.C.</b>	24.82	36.04	18.28	29.14	23.60	0.00	0.00	0.00	0.00	0.00	0.00	0.00
	203.50	206.68	99.76	174.75	155.96	139.28	202.75	114.58	216.83	109.10	213.44	121.05

**Total Incoming Tonnage 2014 = 1,957.68**

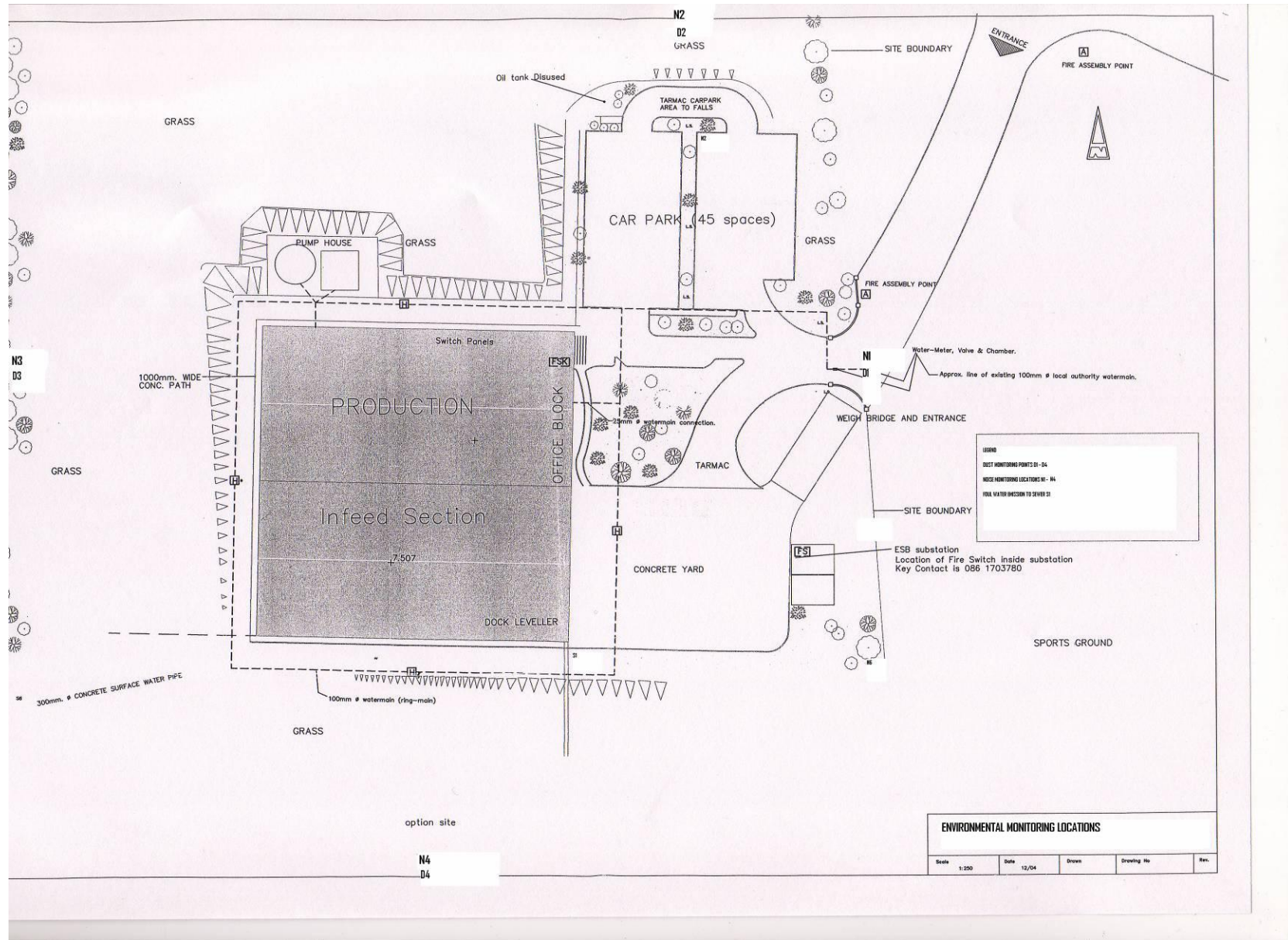
## Total Tonnage Outgoing Material 2014

Company	Product	Jan-14	Feb-14	Mar-14	Apr-14	May-14	Jun-14	Jul-14	Aug-14	Sept-14	Oct-14	Nov-14	Dec-14	
Dungarvan CAS	Mixed Municipal Waste	0.00	0.00	0.00	0.00	0.00	0.00	2.60	0.00	0.00	0.00	0.00	0.00	2.60
AES (Tullamore)	MDR	163.82	240.14	0.00	233.24	211.92	0.00	338.00	132.42	231.92	78.44	186.10	188.66	2004.66
		163.82	240.14	0.00	233.24	211.92	0.00	340.60	132.42	231.92	78.44	186.10	188.66	2007.26

**Total Outgoing Material 2014 = 2007.26**

# **Appendix B**

## Map of Monitoring Locations





# **Appendix C**

## Bund Integrity Test

**MATERIALS RECOVERY FACILITY  
WATERFORD CITY & COUNTY COUNCIL,  
DUNGARVAN,  
COUNTY WATERFORD**



**BUND TEST REPORT.**

**Integrity of Bunding at Oil Tank,  
Materials Recovery Facility, Shandon, Dungarvan.**

**INTRODUCTION**

On Monday 22nd of September we completed a bund integrity test on the bund surrounding the diesel storage tank in the Materials Recovery Facility in Dungarvan. At 9am we started to fill the Bund, at 11am we marked the water level. Over the next 5hrs we monitored the water level. At 4pm we did a final check on the water level, Weather on the day was dry, tank and bund has a permanent cover. The access hatches were closed for the duration of the test.

**WATER LEVELS**

Date: 22/09/14 Time 11:00  
Date: 22/09/14. Time 16:00

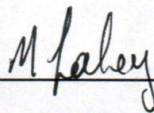
Depth of Water in Bunding: 645 mm.  
Depth of Water in Bunding: 645 mm.

**COMMENT**

We noted no drop in water level.

The bund is considered fit for purpose.

**Signed:**



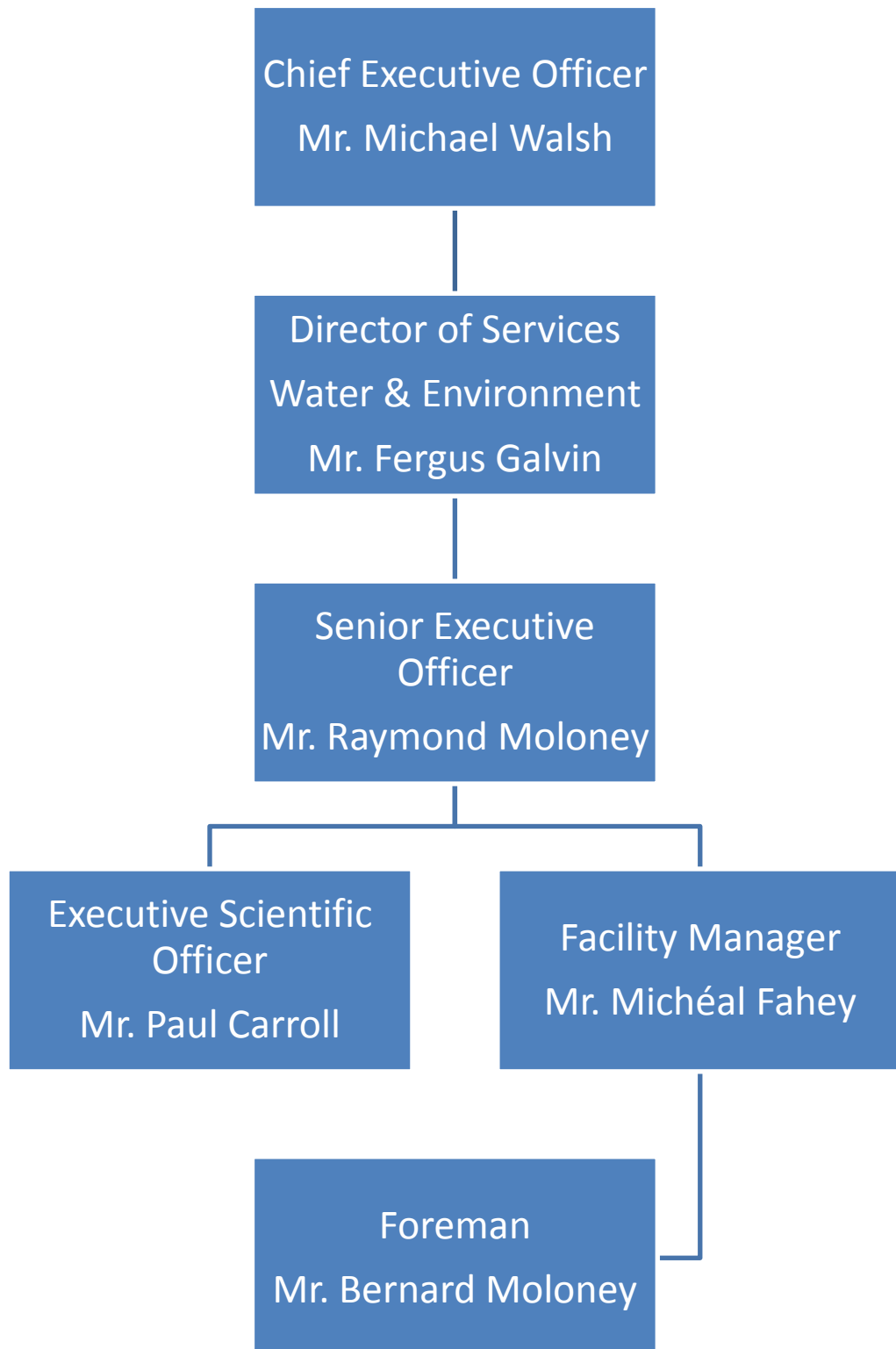
**Michéal Fahey.  
Facility Manager**

**Date of Report: 10/10/2014**

# **Appendix D**

## Management Structure

## Management Structure of Waterford City & County Council



# **Appendix E**

## **AER Returns Workbook**



Environmental Protection Agency

[Guidance to completing the PRTR workbook](#)

# AER Returns Workbook

Version 1.1.15

<b>REFERENCE YEAR</b>	2014
-----------------------	------

## 1. FACILITY IDENTIFICATION

Parent Company Name	Waterford County Council
Facility Name	Waterford County Council Materials Recovery Facility
PRTR Identification Number	W0189
Licence Number	W0189-01

### Waste or IPPC Classes of Activity

No.	class_name
4.2	Recycling or reclamation of organic substances which are not used as solvents (including composting and other biological transformation processes).
3.12	Repackaging prior to submission to any activity referred to in a preceding paragraph of this Schedule.
3.13	Storage prior to submission to any activity referred to in a preceding paragraph of this Schedule, other than temporary storage, pending collection, on the premises where the waste concerned is produced.
4.11	Use of waste obtained from any activity referred to in a preceding paragraph of this Schedule.
4.13	Storage of waste intended for submission to any activity referred to in a preceding paragraph of this Schedule, other than temporary storage, pending collection, on the premises where such waste is produced.
4.3	Recycling or reclamation of metals and metal compounds.
4.4	Recycling or reclamation of other inorganic materials.
Address 1	Shandon
Address 2	Dungarvan
Address 3	Co Waterford
Address 4	
	Waterford
Country	Ireland
Coordinates of Location	-7.62761 52.097
River Basin District	IESE
NACE Code	3832
Main Economic Activity	Recovery of sorted materials
<b>AER Returns Contact Name</b>	Micheal Fahey
<b>AER Returns Contact Email Address</b>	mlfahy@waterfordcoco.ie
<b>AER Returns Contact Position</b>	Facility Manager
<b>AER Returns Contact Telephone Number</b>	(058)-21333
<b>AER Returns Contact Mobile Phone Number</b>	(086)-170-3780
<b>AER Returns Contact Fax Number</b>	(058)-24474
<b>Production Volume</b>	0.0
<b>Production Volume Units</b>	

<b>Number of Installations</b>	1
<b>Number of Operating Hours in Year</b>	650
<b>Number of Employees</b>	3
<b>User Feedback/Comments</b>	
<b>Web Address</b>	

## 2. PRTR CLASS ACTIVITIES

Activity Number	Activity Name
50.1	General
50.1	General

## 3. SOLVENTS REGULATIONS (S.I. No. 543 of 2002)

Is it applicable?	No
Have you been granted an exemption ?	
If applicable which activity class applies (as per Schedule 2 of the regulations) ?	
Is the reduction scheme compliance route being used ?	

## 4. WASTE IMPORTED/ACCEPTED ONTO SITE

[Guidance on waste imported/accepted onto site](#)

Do you import/accept waste onto your site for on-site treatment (either recovery or disposal activities) ?	
--	--

This question is only applicable if you are an IPPC or Quarry site

Transfer Destination	European Waste Code	Hazardous	Quantity (Tonnes per Year)	Description of Waste	Waste Treatment Operation	Method Used M/C/E	Method Used	Haz Waste : Name and Licence/Permit No of Next Destination Facility		Location of Treatment	Non Haz Waste: Name and Licence/Permit No of Recover/Disposer		Haz Waste : Address of Next Destination Facility		Non Haz Waste: Address of Recover/Disposer	
<b>Within the Country</b>	<b>20 03 01</b>	No	2.6	mixed municipal waste	R3	M	Weighed	Offsite in Ireland	Civic Amenity Site,WD032/02			Ballinamuck,Dungarvan,Waterford,Ireland,Ireland				
<b>Within the Country</b>	20 03 01	No	2007.26	mixed municipal waste	R3	M	Weighed	Offsite in Ireland	AES,WCP-OY-08-601-01 / W104-02			Cappincur,Tullamore,Co. Offaly,,Ireland				