

**WATERFORD CARPETS LTD
ANNUAL ENVIRONMENTAL REPORT
2014**

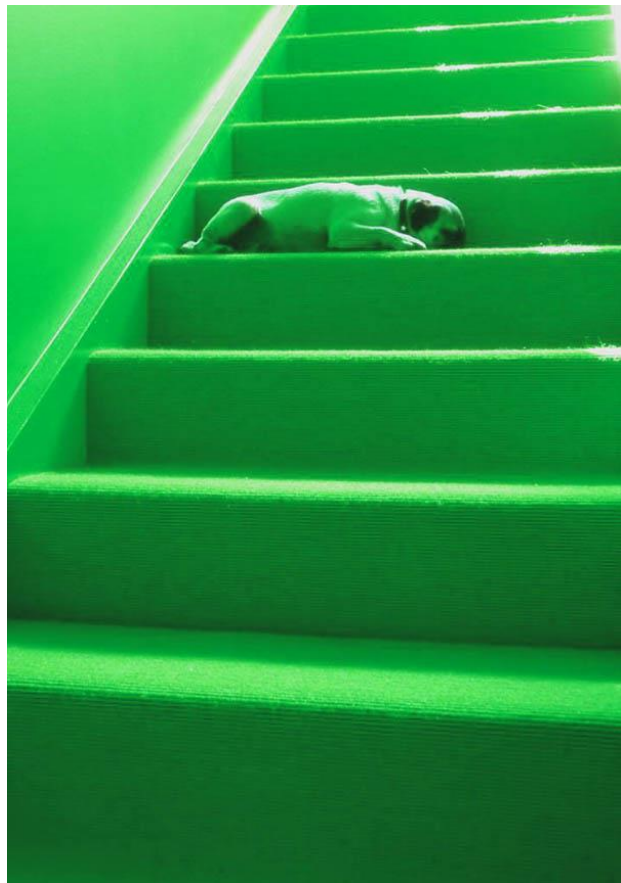


TABLE OF CONTENTS

TABLE OF CONTENTS	2
LIST OF TABLES	3
1.0 Introduction	4
1.1 <i>Company Details</i>	4
1.2 <i>Company Description</i>	5
1.3 <i>Environmental Policy</i>	6
1.4 <i>Company Organisation Chart</i>	7
2.0 SUMMARY INFORMATION	8
2.1 <i>Emissions to Sewer</i>	8
2.2 <i>Emissions to Surface Waters</i>	8
2.3 <i>Emissions to Atmosphere</i>	10
2.4 <i>Waste Management</i>	11
2.4.1 <i>Hazardous Waste</i>	11
2.4.2 <i>Non-Hazardous Waste</i>	11
2.5 <i>Energy Consumption (2010-2014)</i>	13
2.6 <i>Water Consumption (2010-2014)</i>	14
2.7 <i>Environmental Incidents and Complaints</i>	15
2.8 Agency Monitoring and Enforcement	15
3.0 ENVIRONMENTAL MANAGEMENT	16
3.1 <i>Environmental Objectives and Targets</i>	17
4.0 LICENCE SPECIFIC REPORTS	19
4.1 <i>Noise Survey</i>	19
4.1.1 <i>Boundary Noise Measurements</i>	19
4.1.2 <i>Noise sensitive Locations</i>	20

LIST OF TABLES

Table 1. Emissions to Sewer for 2010 – 2014	8
Table 2 Results of Surface Water Monitoring for 2010 – 2014 (SE2)	9
Table 3 Results of Air Emissions Monitoring for 2010 – 2014	10
Table 4 Summary Information on Waste (2010 – 2014)	12
Table 5 Detailed information on Waste Streams 2014	12
Table 6 Water Consumption	14
Table 7 Boundary Noise Monitoring Results (08/12/2014)	19
Table 8 Noise Sensitive Locations Day-time Monitoring Results (08/12/2014)	20
Table 9 Noise Sensitive Locations Night-time Monitoring Results (08/12/2014)	20

1.0 Introduction

This Annual Environmental Report (AER) for Waterford Carpets Ltd presents information for the period from 1st January to the 31st December 2014. The report format follows *EPA Guidance Note for Annual Environmental Report*.

The following items are included in this report:

- Summary of emissions to atmosphere
- Summary of emissions to water
- Waste management report
- Resource consumption summary
- Complaints summary
- Reported incidents summary
- Environmental management programme report and proposal
- Schedule of objectives and targets
- Noise survey results summary
- Water usage report

Waterford Carpets Ltd. has developed its environmental policy as part of its environmental management system. The company has been granted with ISO 14001 Environmental Management Systems Standard Certification in October 2008.

1.1 Company Details

Licence Register Number: P0510-01
Name: Waterford Carpets Limited.
Address: Unit 201
Cork Road Industrial Park,
Waterford.

Contact Information: Mr. Noel Cunningham
Managing Director
Tel: 051-375941
Email: ncunningham@tretford.ie

Mr. Bart Zdrojowy
Environmental / Technical Manager
Email: bart@tretford.ie

1.2 Company Description

Waterford Carpets Limited has been in operation since September 1969 in the IDA Industrial Park Waterford. Waterford Carpets Limited manufactures a ribbed heavy contract non-woven carpet. This carpet is manufactured under the trade name **tretford**. The carpet is manufactured from a combination of goat hair, nylon, rayon and wool.

No dyeing or treatment of the carpet takes place on the site at present, nor does the process of moth proofing.

Waterford Carpets Limited operates a continuous production system from 08:00 Monday to 08:00 Saturday on a three-shift rota system. Since 2009 production is run in short time patterns.

At present Waterford Carpets Limited employs 30 personnel.

Waterford Carpets management and staff recognise the importance of environmental protection as an essential requirement of its operations. Among the stated values of Waterford Carpets are the following:

- That our products will be safe to make and to use.
- We will conserve natural resources and we will continue to invest in better environment protection.
- Waterford Carpets Ltd. will undertake to conduct its business in a manner, which protects the environment of the Customers, Employees and Community in which it operates.

The challenge is to achieve a high quality environment, to this end; the company is committed to continuous improvement - "reduce, reuse & recycle"- at all levels throughout the organisation.

1.3 Environmental Policy

The General Management of Waterford Carpets Limited is committed to pollution prevention and environmental protection at its facility. Waterford Carpets Limited aims to achieve the highest standards of environmental performance in the interest of all our stakeholders, whether they are employees, neighbours, the general public or the natural environment.

Waterford Carpets Limited is committed to complying with all environmental legislation and regulations that may apply to the industry and we will make every effort to comply with the requirements of our Integrated Pollution Control Licence. We will adhere to the principles of responsible care and we strive for continuous improvement in its implementation.

By preparing and implementing an Environmental Management System, which will include policies, objectives and targets, we will administer a continuous programme designed to ensure that the products manufactured at Waterford Carpets Limited will not compromise or damage the environment.

Waterford Carpets Limited will review the Environmental Management System annually. We will also review our environmental aspects register and set Environmental Objectives and targets accordingly.

Waterford Carpets will examine and evaluate the environmental implications of any processes and products, and cleaner technologies will be investigated and utilised where possible. Waste avoidance and reduction plus a waste recycling initiative will be vigorously pursued and implemented.

Waterford Carpets will continuously examine, evaluate and review energy usage in its manufacturing processes and implement an energy conservation programme. We will ensure that adequate operational procedures and emergency plans are implemented and reviewed on an ongoing basis. We will ensure that our employees receive adequate training in relation to our environmental policies and procedures and will review these training needs as may be required.

We are committed to continuous improvement of our Environmental Management System and we will ensure that it shall be integrated at all levels within our organisation. We will strive for ever-improving environmental performance and we will strive to protect the environment for our employees, neighbours and all our other stakeholders.

Noel Cunningham
Managing Director

1.4 Company Organisation Chart

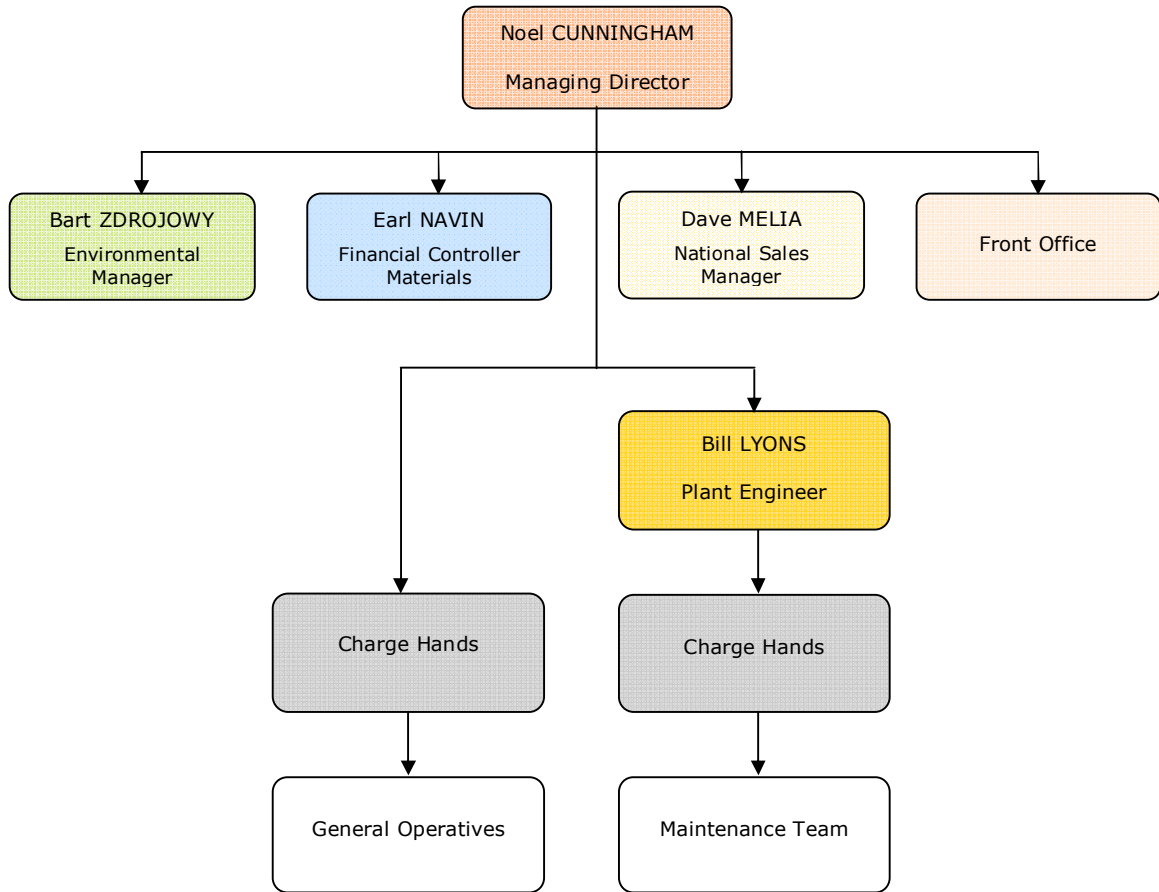


Figure 1. Organisation Chart for Waterford Carpets Ltd.

NB. Environmental Manager has direct environmental responsibilities. All other employees have support roles.

2.0 SUMMARY INFORMATION

This section contains a summary of the information regarding:

- Annual emissions data, including discharges to waters, air emissions, waste management and noise.
- Energy and water usage
- Environmental incidents and complaints

This section of the AER provides summary data on emissions/discharges to various environmental media from the Waterford Carpets site.

2.1 Emissions to Sewer

This section of the AER provides information pertaining to Waterford Carpets emissions to sewer. The emissions to sewer data indicate overall compliance with the IPPC emission limit values (ELV's). There were no non-compliances recorded during 2014.

Table 1. Emissions to Sewer for 2010 – 2014

Parameter	15/12/2010	01/12/2011	20/11/2012	26/11/2013	8/12/2014	Limit Value	Monitoring Frequency
Temperature	19°C	21°C	22°C	20°C	19°C	40°C max	Annually
PH	7.1	7.6	7.1	7.2	7.1	6-9	Annually
BOD (mg/L)	9	11	10	11	15	60	Annually
COD (mg/L)	95	104	82	76	82	1000	Annually
Suspended Solids (mg/L)	6	5	4	6	10	120	Annually

2.2 Emissions to Surface Waters

Waterford Carpets discharges non-process water at discharge points SE2 in accordance with Schedule 4(i) of the IPPC Licence (Reg. No. P0510-01).

Non-process water consists of:

- Storm water run-off from roofs.
- Storm water run-off from areas including car parks and paved areas.

Surface water discharges at SE2 are measured on a quarterly basis for pH, COD and conductivity. A visual inspection takes place twice weekly.

A summary of the surface water discharge monitoring results is outlined in the table below.

Table 2 Results of Surface Water Monitoring for 2010 – 2014 (SE2)

Q1		9/03/2010	15/03/2011	30/03/2012	24/01/2013	20/01/2014	Limit Value
	pH	n/a*	6.9	7.1	6.9	7.5	6-9
	COD (mg/l)	n/a*	26	26	42	65	-
	Conductivity (uS/cm)	n/a*	140	109	103	246	-
Q2		25/06/2010	21/06/2011	20/06/2012	09/05/2013	16/04/2014	Limit Value
	pH	7.2	7.1	6.9	7.2	6.9	6-9
	COD (mg/l)	21	20	41	35	77	-
	Conductivity (uS/cm)	154	110	152	187	206	-
Q3		18/08/2010	14/09/2011	05/09/2012	16/09/2013	24/07/2014	Limit Value
	pH	7.2	6.4	7.5	7.1	7.4	6-9
	COD (mg/l)	11	17	40	45	97	-
	Conductivity (uS/cm)	164	106	127	156	178	-
Q4		13/10/2009	01/12/2011	20/11/2012	26/11/2013	08/10/2014	Limit Value
	pH	7.1	7.2	7.0	7.4	7.6	6-9
	COD (mg/l)	14	19	39	71	69	-
	Conductivity (uS/cm)	103	127	114	173	167	-

*While taking water sample for testing an oily contamination was found in water coming up from the industrial estate. EPA, IDA and Waterford City Council were informed and arrived on site. Sample contaminated, not fit for testing.

Since 2002 surface water monitoring results are within the limits set in IPPC licence Reg. No. P0510-01. No results are available prior to that.

2.3 Emissions to Atmosphere

The emissions to atmosphere monitoring at Waterford Carpets Ltd. was carried out to fulfil the requirements of Condition 5 and Schedule 1(i) of IPPC licence registration number P0510-01. Air Emissions Monitoring started in 2002; the results available since demonstrate compliance with the IPPC Licence limit value. From 2014 Air Emissions survey is carried out by Exova Catalyst.

Table 3 Results of Air Emissions Monitoring for 2010 – 2014

	A2-1	A2-2	A2-3	A2-4	A2-5	A2-06	Limit Value (mg/Nm ³):
Sampling date:	18/12/2014 26/11/2013 10/12/2012 01/12/2011 08/03/2010	01/05/2014 26/11/2013 19/12/2012 15/03/2011 08/03/2010	18/12/2014 23/07/2013 20/12/2012 15/03/2011 15/12/2010	01/05/2014 23/07/2013 20/11/2012 15/03/2011 NIU	NIU NIU NIU 01/12/2011 18/08/2010	01/05/2014 16/09/2013 10/12/2012 07/12/2011 13/10/2010	
2014	2.66	2.70	0.43	1.20	-	1.17	50
2013	6.17	4.46	10.89	7.94	-	3.16	50
2012	5.21	3.52	4.65	8.29	-	2.37	50
2011	1.01	4.30	7.15	5.31	6.48	2.01	50
2010	5.60	8.45	13.16	-	1.58	2.14	50

NIU – Not in use

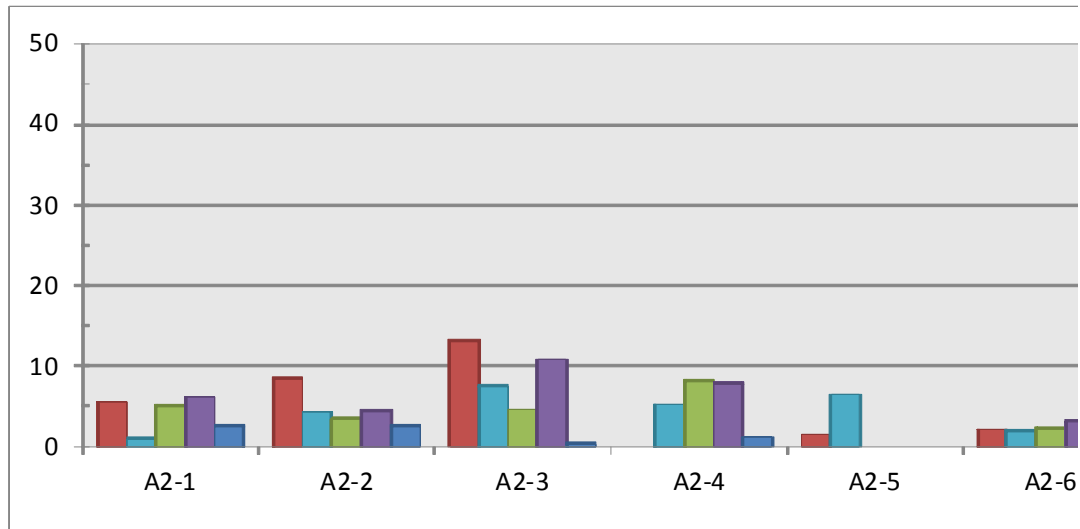


Figure 2 Particulate Emissions 2010-2014. ELV is set on 50mg/Nm³.

2.4 Waste Management

Waterford Carpets Ltd. maintains full details and records of all waste arising on site in accordance with Condition 7 of the IPPC Licence. This section of the Annual Environmental Report (AER) provides comprehensive information regarding these wastes.

A full record, which shall be open to inspection by authorised persons of the Agency at all times, shall be kept by the licensee on matters relating to the waste management operations and practices at this site.

The records shall as a minimum contain details of the following:

- The names of the agent and transporter of the waste.
- The name of the persons responsible for the ultimate disposal/recovery of the waste.
- The ultimate destination of the waste.
- The tonnage and EWC code for the waste materials listed in schedule 3(1) Hazardous Waste for Disposal/Recovery and schedule 3(2) Other Wastes for Disposal/Recovery sent off site for Disposal/Recovery.
- Details of any rejected consignments.
- The tonnage and EWC code for the waste materials listed in schedule 3(1) Hazardous Waste for Disposal/Recovery and schedule 3(2) Other Wastes for Disposal/Recovery recovered/disposed of on site.

A summary of the waste quantities generated at the Waterford Carpets site is included in Table 2.7. A copy of waste management record is attached.

2.4.1 Hazardous Waste

The main source of hazardous waste generated on-site is waste PVC adhesive. Other than that are MV lamps, fluorescent tubes and batteries. All hazardous wastes generated are stored in designated hazardous waste storage areas.

Indaver processes waste adhesive and fire-retardant while Irish Lamp Recycling collects mercury vapour lamps, fluorescent tubes and batteries.

No ILR collections were recorded in 2014.

2.4.2 Non-Hazardous Waste

The main disposed non-haz wastes include carpet trimmings and fibres and general (office/canteen) waste. Non-hazardous wastes destined for recovery were: baled cardboard and cardboard cores, timber pallets and boxes and scrap metal.

Table 4 Summary Information on Waste (2010 – 2014)

	2010	2011	2012	2013	2014	Note
Total quantity of waste (Tonnes)	198.43	138.32	129.24	95.45	75.91	
disposed of off-site	166.80	94.43	101.05	60.99	62.27	D1
recovered on-site	-	-	-	-	-	-
recovered off-site	31.63	43.89	28.19	34.46	13.64	R1, R3, R4, R5, R12
Non-hazardous waste (Tonnes)	198.40	135.60	129.24	91.96	75.91	
disposed of off-site	166.80	94.43	101.05	60.99	62.27	D1
recovered on-site	-	-	-	-	-	-
recovered off-site	31.60	41.17	28.19	30.97	13.64	R3, R4, R5
Hazardous waste (Tonnes)	0.03	2.72	-	-	-	
disposed of off-site	-	-	-	-	-	-
recovered off-site	0.03	2.72	-	3.49	-	R1, R12

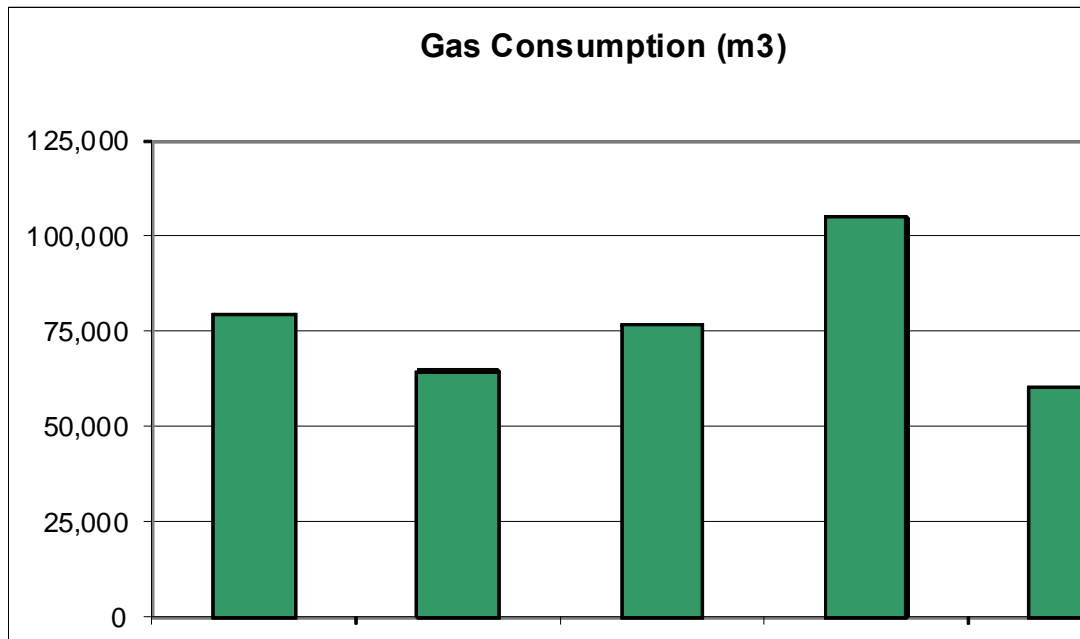
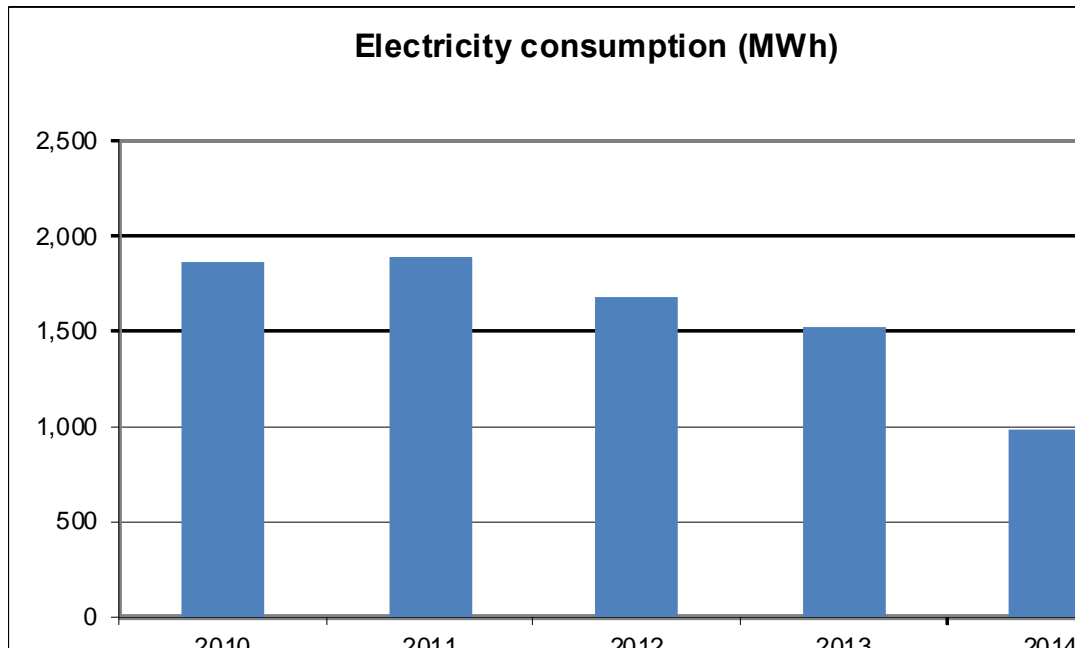
Table 5 Detailed information on Waste Streams 2014

European Waste Catalogue Code	Haz (Yes/No)	Description of Waste	Quantity (t/year)	Disposal/ Recovery Code	Location of Disposal/ Recovery	Name of Waste Disposal/ Recovery Contractor
Non hazardous:						
20 03 01	N	mixed municipal waste	62.27	D1	(b) Six Crossroads Bus. Pk	Greenstar
20 01 01	N	paper and cardboard	11.46	R3	(b) Six Crossroads Bus. Pk	Greenstar
15 01 04	N	metallic packaging	2.18	R4	(b) Enniscorthy	Molloy Metal Recycling Ltd

(a) On-site; (b) Off-site (Ireland); (c) Off-site (abroad)

2.5 Energy Consumption (2010-2014)

	2010	2011	2012	2013	2014
Electricity (MWh)	1,859	1,894	1,682	1,524	980
Gas (m ³)	79,714	64,676	76,802	105,052	60,386

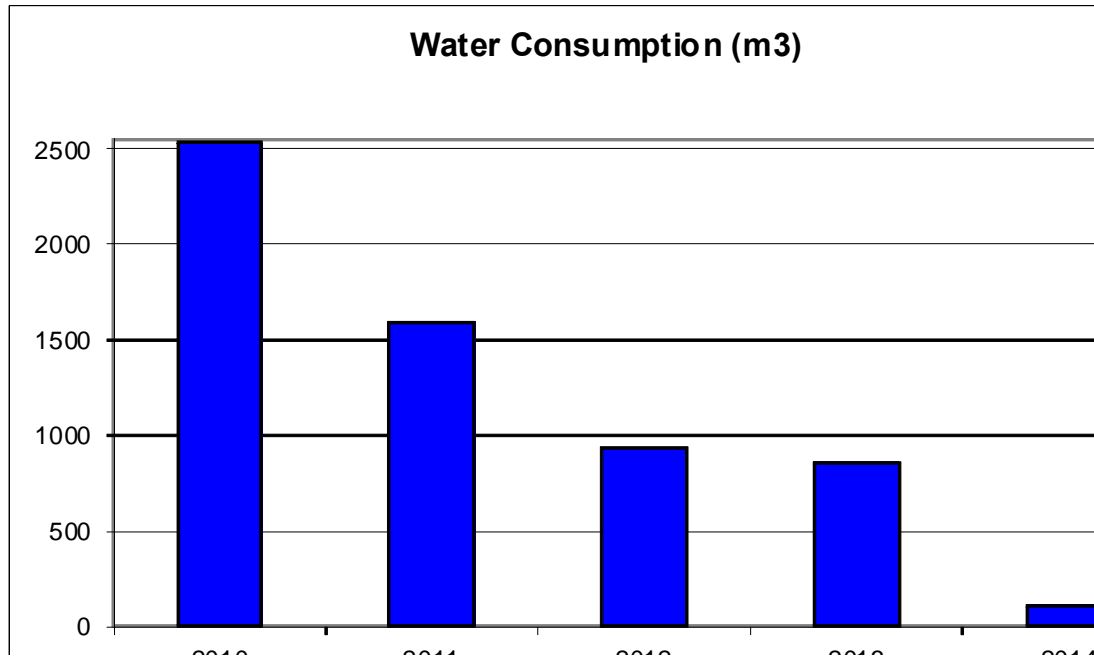


2.6 Water Consumption (2010-2014)

Table 6 Water Consumption

	2010	2011	2012	2013	2014
Cubic m	2,530	1,597	933	860	112

In 2010 a huge leakage from a corroded water tank was responsible for unusually high water consumption. Further refurbishment works on the sprinkler system allowed us to significantly trim the water bill in 2014.

Figure 3 Water Consumption (m³)

2.7 Environmental Incidents and Complaints

There were no environmental incidents recorded or reported during the 2014 period

There was no environmental complaints received for the period
January to December 2014

2.8 Agency Monitoring and Enforcement

There was one unannounced visit by the agency to Waterford Carpets Ltd during 2014.

Site Visit Reference Number: SV00100

This visit took place on the 31st March 2014 and was an unannounced visit by Ms Eimear O'Keeffe of the EPA. Waterford Carpets Ltd was found to be non compliant with two conditions of their IPPC licence.

1. Bunding

- The bunds on site have not been integrity tested since November 2009 respectively. The issue was noted on previous site inspection report dated 21/10/13 (doc. ref. no. P510-01/sm12ma).
This is a non-compliance with Condition 10.3.1 of your licence. This non-compliance will be reported on ALDER.

Corrective Action Required:

- The licensee shall carry out bund integrity testing in accordance with Condition 10.3.1 of your licence, as a matter of urgency. Failure to do so will result in further enforcement action by the Agency.

2. Underground Pipeline Testing

- The underground pipelines on site have not been integrity tested since June 2009 respectively. This issue was noted on previous site inspection report dated 21/10/13 (doc. ref. no. P510-01/sm12ma).
This is a non-compliance with Condition 10.3.5. of your licence. This non-compliance will be reported on ALDER.

Corrective Action Required:

- The licensee shall carry out pipeline integrity tests in accordance with Condition 10.3.5 of your licence, as a matter of urgency. Failure to do so will result in further enforcement action by the Agency.

There were two inspection observations also noted which did not constitute non-compliances but should be addressed.

1. Bunds, sumps, pipelines, interceptors and tanks status register

- The register of the status and integrity of bunds, sumps, pipelines, interceptors and tanks is not available on site.

Corrective Action Required:

- The licensee shall maintain a register of all bunds, sumps, pipelines, interceptors and tanks on site, which shall include the status of integrity testing for each.

2. Bunding

- The bund containing the large PVC tank in the materials storage area, contained a layer of PVC in the base.

Corrective Action Required:

- The licensee shall ensure that adequate capacity is maintained within all bunds on site. The licensee shall clean out the PVC in the base of the bund and send off-site for disposal, to an appropriate waste facility.

3.0 ENVIRONMENTAL MANAGEMENT

Waterford Carpets Ltd. operates and maintains the ISO 14001 certified Environmental Management System (EMS). Therefore the company has documented and implemented an EMS and complies with the requirements of Condition 2.2 of the IPPC Licence (Reg. PO510-01).

A schedule of Environmental Objectives and Targets has been developed by Waterford Carpets in accordance with Condition 2.2.2 of the IPPC Licence. These have been included in the Environmental Management Programme, which designates responsibility for the various objectives and targets. The EMP also outlines the means by which the Objectives and Targets may be achieved and the timescales involved in accordance with Condition 2.2.2.2 of the IPPC Licence. The EMP is revised and updated as required.

Programmes and procedures are in place to ensure effective management and control.

3.1 Environmental Objectives and Targets

2012 Schedule of Objectives and Targets				
Prepared by: Bart Zdrojowy, Environmental Manager				Date: February 2015
Approved by: Noel Cunningham, Managing Director				
	Target	Plan	Responsible Party	Timescale (for completion)
Objective 1 Waste 1.1 Non-hazardous waste 1.2 Hazardous waste Lower amount of landfill waste created per sqm of product	Waste production monitoring	Implement monitoring programme in each department	Environmental Manager	Complete by 1Q 2014.
		Identify critical areas	Environmental Manager	Complete by 2Q 2014
	Alternative paths for landfill waste.	Investigate composting options	Environmental Manager	Complete by 1Q 2014
		Investigate alternative use for small rolls / 2 nd grade / off-cuts	Environmental Manager	Complete by 2Q 2014
		More effective collection and recycling of plastic wrapping	Environmental Manager	Complete by 3Q 2014. Review
Objective 2 Gas and Energy usage Control gas & energy usage. Lower CO2 emissions.	Track energy usage and charges	Review charges for 2014, renew contracts	Environmental Manager	Ongoing process.
	Lower CO2 emissions	100% Green (renewable) Electricity Cotract Re-signed	Managing Director / Environmental Manager	Completed
	Energy Efficiency Audit	Review recommendations	Environmental Manager / Plant Engineer / MD	Completed in 4Q 2014
		Implement where possible	Environmental Manager / Plant Engineer	Complete by 2Q 2015

Objective 3 Housekeeping	Glue Room Housekeeping	Header Tank Bund emptied + cleaned	Contractor / Environmental Manager	Complete by 4Q 2015
		Integrity status tests carried out on all bunds	Environmental Manager	Completed in 2Q 2015
		Bunds, Sumps, Pipelines Register	Environmental Manager	Complete by 2Q 2015
	Underground Pipelines	Conduct CCTV survey on underground rain water pipelines	Contractor / Environmental Manager	Completed in 4Q 2014

4.0 LICENCE SPECIFIC REPORTS

4.1 Noise Survey

4.1.1 Boundary Noise Measurements

Table 7 Boundary Noise Monitoring Results (08/12/2014)

Boundary Noise Day-time Results							
Location No.	Location description	Measurement Period (Min.)	Sampling Time	L _{eq} dB(A)	L ₁₀ dB(A)	L ₉₀ dB(A)	Comments
N1	South West Corner Across from workshop	15	15:05	52	53	48	Traffic on the Industrial Estate which was heavy and clearly audible at this location. Noise from the factory was not audible.
N2	West Face – Across from glue mixing	15	15:23	51	53	47	The predominant source of noise at this measurement location was traffic on the Industrial Estate which was heavy and clearly audible at this location. There was no audible noise from the Waterford Carpets facility. The roller shutter door to the Glue Mixing Area was closed during the measurement period.
N3	North West Corner	15	15:40	50	51	47	The predominant source of noise at this measurement location was traffic on the Industrial Estate. No noise was audible from the factory.
N4	North Face	15	15:57	49	51	46	The predominant source of noise at this measurement location was traffic on the Industrial Estate which was clearly audible at this location. There was no audible noise from the Waterford Carpets facility.
N5	North East Corner	15	16:14	51	48	44	The predominant source of noise at this measurement location was traffic on the Industrial Estate and on Lismore Park Road. There was no noise audible from Waterford Carpets Ltd.
N6	East Face – across from Loading Bay	15	16:32	52	54	49	The predominant source of noise at this measurement location was traffic on the Industrial Estate.
N7	South east Corner – Main Entrance	15	16:50	54	54	49	The main source of noise at this measurement location was traffic on the Industrial Estate. There was no noise audible noise from the Waterford Carpets facility.
N8	South Face	15	17:07	55	54	51	The main source of noise at this measurement location was traffic on the Industrial Estate. There was no noise audible noise from the Waterford Carpets facility.

Results marked **red** exceeds the specified day-time limit of 55 dB(A)

4.1.2 Noise sensitive Locations

Table 8 Noise Sensitive Locations Day-time Monitoring Results (08/12/2014)

Noise Sensitive Location Day-time Results							
Location No.	Location description	Measurement Period (Min.)	Sampling Time	L _{eq} dB(A)	L ₁₀ dB(A)	L ₉₀ dB(A)	Comments
9	No. 10 Lismore Park	15	17:35	54	54	51	The predominant source of noise was traffic on Lismore Park Road, which was relatively light during the measurement period. No audible noise from the Waterford Carpets facility.
10	No. 95 Lismore Park	15	17:52	54	54	51	The predominant source of noise was traffic on Lismore Park Road, which was relatively light during the measurement period. No audible noise from the Waterford Carpets facility.
11	No. 112 Lismore Park	15	18:10	53	53	51	The predominant source of noise was traffic on Lismore Park Road, which was relatively light during the measurement period. There was no audible noise from the Waterford Carpets facility.
12	No. 123 Lismore Park	15	18:28	53	54	51	The predominant source of noise was traffic on Lismore Park Road, which was relatively light during the measurement period. There was no audible noise from the Waterford Carpets facility.

Results marked **red** exceeds the specified day-time limit of 55 dB(A)

Table 9 Noise Sensitive Locations Night-time Monitoring Results (08/12/2014)

Noise Sensitive Location Night-time Results							
Location No.	Location description	Measurement Period (Min.)	Sampling Time	L _{eq} dB(A)	L ₁₀ dB(A)	L ₉₀ dB(A)	Comments
9	No. 10 Lismore Park	15	23:55	42	44	43	There was no audible noise from Waterford Carpets facility. Five vehicles passed close to the sound level meter during the monitoring period.
10	No. 95 Lismore Park	15	00:14	43	42	39	There was no audible noise from Waterford Carpets facility. Three vehicles passed close to the sound level meter during the monitoring period.
11	No. 112 Lismore Park	15	00:35	41	44	39	There was no audible noise from the Waterford Carpets facility.
12	No. 123 Lismore Park	15	00:53	41	41	39	There was no audible noise from the Waterford Carpets facility. One vehicle passed close to the sound level meter during the monitoring period.

Results marked **red** exceed the specified night-time limit of 45 dB(A)

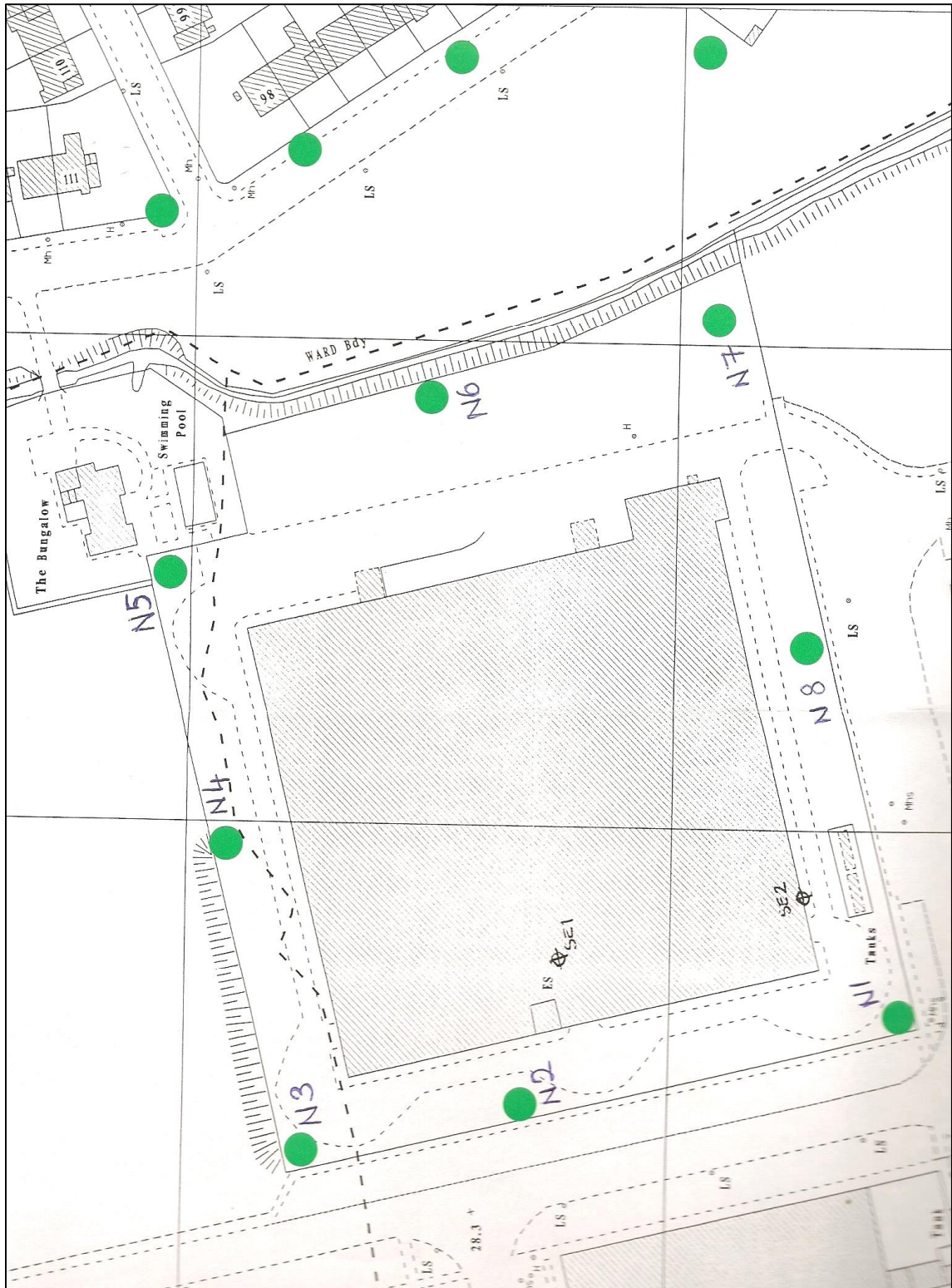


Figure 4 Location of noise monitoring points



Environmental Protection Agency

| PRTR# : P0510 | Facility Name : Waterford Carpets Limited | Filename : P0510_2014.xls | Return Year : 2014 |

[Guidance to completing the PRTR workbook](#)

AER Returns Workbook

Version 1.1.18

REFERENCE YEAR	2014
-----------------------	------

1. FACILITY IDENTIFICATION

Parent Company Name	Waterford Carpets Limited
Facility Name	Waterford Carpets Limited
PRTR Identification Number	P0510
Licence Number	P0510-01

Classes of Activity

No.	class_name
-	Refer to PRTR class activities below

Address 1	Unit 201
Address 2	IDA Industrial Park
Address 3	Cork Road
Address 4	Waterford
	Waterford
Country	Ireland
Coordinates of Location	-7.14475 52.2479
River Basin District	IESE
NACE Code	1393
Main Economic Activity	Manufacture of carpets and rugs
AER Returns Contact Name	Bart Zdrojowy
AER Returns Contact Email Address	bart@tretford.ie
AER Returns Contact Position	Technical / Environmental Manager
AER Returns Contact Telephone Number	051 375 941
AER Returns Contact Mobile Phone Number	
AER Returns Contact Fax Number	051 379 607
Production Volume	0.0
Production Volume Units	
Number of Installations	1
Number of Operating Hours in Year	0
Number of Employees	30
User Feedback/Comments	Air emissions - significantly less machine hours over 2014 compared to 2013. Also new contractor on site to perform Air Emissions testing.
Web Address	www.tretford.com

2. PRTR CLASS ACTIVITIES

Activity Number	Activity Name
50.1	General

3. SOLVENTS REGULATIONS (S.I. No. 543 of 2002)

Is it applicable?	
Have you been granted an exemption ?	
If applicable which activity class applies (as per Schedule 2 of the regulations) ?	
Is the reduction scheme compliance route being used ?	

4. WASTE IMPORTED/ACCEPTED ONTO SITE

[Guidance on waste imported/accepted onto site](#)

Do you import/accept waste onto your site for on-site treatment (either recovery or disposal activities) ?	
--	--

4.1 RELEASES TO AIR [Link to previous years emissions data](#)

| PRTR# : P0510 | Facility Name : Waterford Carpets Limited | Filename : P0510_2014.xls | Return Year : 2014 |

03/04/2015 14:53

SECTION A : SECTOR SPECIFIC PRTR POLLUTANTS

RELEASER TO AIR		METHOD		Please enter all quantities in this section in KGs			
No. Annex II	Name	M/C/E	Method Used		QUANTITY		
			Method Code	Designation or Description	Emission Point 1	T (Total) KG/Year	A (Accidental) KG/Year
					0.0	0.0	0.0

* Select a row by double-clicking on the Pollutant Name (Column B) then click the delete button

SECTION B : REMAINING PRTR POLLUTANTS

RELEASER TO AIR		METHOD		Please enter all quantities in this section in KGs						QUANTITY			
No. Annex II	Name	M/C/E	Method Used		A2-01	A2-02	A2-03	A2-04	A2-05 (NIU)	A2-06	T (Total) KG/Year	A (Accidental) KG/Year	F (Fugitive) KG/Year
			Method Code	Designation or Description	Emission Point 1	Emission Point 2	Emission Point 3	Emission Point 4	Emission Point 5	Emission Point 6			
86	Particulate matter (PM10)	E	ESTIMATE	(EN 13284-1:2002 Determination of Low Range Mass Concentration). Annual 30-min monitoring result (Kph) times ACTUAL production hours	7.32	22.1263	4.5312	15.1305	0.0	0.2054	49.3134	0.0	0.0

* Select a row by double-clicking on the Pollutant Name (Column B) then click the delete button

SECTION C : REMAINING POLLUTANT EMISSIONS (As required in your Licence)

RELEASER TO AIR		METHOD		Please enter all quantities in this section in KGs			
Pollutant No.	Name	M/C/E	Method Used		QUANTITY		
			Method Code	Designation or Description	Emission Point 1	T (Total) KG/Year	A (Accidental) KG/Year
					0.0	0.0	0.0

* Select a row by double-clicking on the Pollutant Name (Column B) then click the delete button

Additional Data Requested from Landfill operators

For the purposes of the National Inventory on Greenhouse Gases, landfill operators are requested to provide summary data on landfill gas (Methane) flared or utilised on their facilities to accompany the figures for total methane generated. Operators should only report their Net methane (CH4) emission to the environment under T (total) KG/yr for Section A: Sector specific PRTR pollutants above. Please complete the table below:

Landfill:	Waterford Carpets Limited				Facility Total Capacity m3 per hour
	T (Total) kg/Year	M/C/E	Method Used		
			Method Code	Designation or Description	
Total estimated methane generation (as per site model)	0.0				N/A
Methane flared	0.0				0.0 (Total Flaring Capacity)
Methane utilised in engine/s	0.0				0.0 (Total Utilising Capacity)
Net methane emission (as reported in Section A above)	0.0				N/A

4.3 RELEASES TO WASTEWATER OR SEWER

[Link to previous years emissions data.](#)

| PRTR# : P0510 | Facility Name : Waterford Carpets Limited | Filename : P0510_2014.xls | Return Year : 03/04/2015 15:06

SECTION A : PRTR POLLUTANTS

OFFSITE TRANSFER OF POLLUTANTS DESTINED FOR WASTE-WATER TREATMENT OR SEWER					Please enter all quantities in this section in KGs			
POLLUTANT		METHOD			QUANTITY			
No. Annex II	Name	M/C/E	Method Code	Designation or Description	Emission Point 1	T (Total) KG/Year	A (Accidental) KG/Year	F (Fugitive)
					0.0	0.0	0.0	0.0

* Select a row by double-clicking on the Pollutant Name (Column B) then click the delete button

SECTION B : REMAINING POLLUTANT EMISSIONS (as required in your Licence)

OFFSITE TRANSFER OF POLLUTANTS DESTINED FOR WASTE-WATER TREATMENT OR SEWER					Please enter all quantities in this section in KGs			
POLLUTANT		METHOD			QUANTITY			
Pollutant No.	Name	M/C/E	Method Code	Designation or Description	Emission Point 1	T (Total) KG/Year	A (Accidental) KG/Year	F (Fugitive)
303	BOD	E	ESTIMATE	Sample taken directly off the compressor. Lab analysis result(mg/l) * estimated flow (0.4/hr) *	0.014784	0.014784	0.0	0.0
306	COD	E	ESTIMATE	28wks * 120 hrs / 10*6	0.131712	0.131712	0.0	0.0
240	Suspended Solids	E	ESTIMATE		0.00672	0.00672	0.0	0.0

* Select a row by double-clicking on the Pollutant Name (Column B) then click the delete button

5. ONSITE TREATMENT & OFFSITE TRANSFERS OF WASTE

| PRTR# : P0510 | Facility Name : Waterford Carpets Limited | Filename : P0510_2014.xls | Return Year : 2014 |

03/04/2015 15:13

Please enter all quantities on this sheet in Tonnes

9

Transfer Destination	European Waste Code	Hazardous	Quantity (Tonnes per Year)	Description of Waste	Waste Treatment Operation	Method Used		Location of Treatment	Haz Waste : Name and Licence/Permit No of Next Destination Facility	Haz Waste : Address of Next Destination Facility	Name and License / Permit No. and Address of Final Recoverer / Disposer (HAZARDOUS WASTE ONLY)	Actual Address of Final Destination i.e. Final Recovery / Disposal Site (HAZARDOUS WASTE ONLY)
						M/C/E	Method Used		Non Haz Waste: Name and Licence/Permit No of Recover/Disposer	Non Haz Waste: Address of Recover/Disposer		
To Other Countries	08 04 09	Yes	0.0	waste adhesives and sealants containing organic solvents or other dangerous substances	R1	M	Volume Calculation	Abroad	INDAVER IRELAND LIMITED,IRE/AG040/08	Unit 11 South Ring Bus. Pk Kinsale Rd.,,Cork,,Ireland	Afvalstoffen Terminal Moerdijk B.V.,,821780,Vlasweg,12,Moerdijk,4782 PW,Netherlands	Vlasweg,12,Moerdijk,4782 PW,Netherlands
To Other Countries	16 03 05	Yes	0.0	organic wastes containing dangerous substances	R12	M	Volume Calculation	Abroad	INDAVER IRELAND LIMITED,IRE/AG040/08	Unit 11 South Ring Bus. Pk Kinsale Rd.,,Cork,,Ireland	Afvalstoffen Terminal Moerdijk B.V.,,821780,Vlasweg,12,Moerdijk,4782 PW,Netherlands	Vlasweg,12,Moerdijk,4782 PW,Netherlands
Within the Country	20 01 01	No	11.46	paper and cardboard	R3	M	Weighed	Offsite in Ireland	Greenstar Limited,W0177-03 / WCP-KK-11-54-02	Carrignard,,Waterford City,,Ireland	Unit 14a Six Cross Roads Business Park	
Within the Country	20 01 38	No	0.0	wood other than that mentioned in 20 01 37	R3	M	Weighed	Offsite in Ireland	Greenstar Limited,W0177-03 / WCP-KK-11-54-02	Carrignard,,Waterford City,,Ireland	Unit 14a Six Cross Roads Business Park	
Within the Country	20 03 01	No	62.27	mixed municipal waste	D1	M	Weighed	Offsite in Ireland	Greenstar Limited,W0177-03 / WCP-KK-11-54-02	Carrignard,,Waterford City,,Ireland		
Within the Country	15 01 04	No	2.18	metallic packaging	R4	M	Weighed	Offsite in Ireland	Molloy Metal Recycling,WP/08/14	,,,Enniscorthy,,Ireland		

* Select a row by double-clicking the Description of Waste then click the delete button