



*Site: Ballymount Road, Walkinstown, Dublin 12.*

*Waste Licence Number W0263-01*

## *Annual Environmental Report*

*01<sup>th</sup> January 2014 – 31<sup>st</sup> December 2014*

**Table of Contents**

Table of Contents ..... 2

1.0 Introduction..... 4

    1.1 Company details..... 4

    1.2 Management Structure ..... 5

    1.3 Financial Provision ..... 5

    1.4 Environmental Policy..... 5

    1.5 Activities ..... 6

    1.6 Waste Activities carried out at the Facility..... 6

    1.7 Water Usage:..... 7

2.0 Summary Information..... 7

    2.1 Waste Received..... 7

    2.2 Waste Transferred Off-Site for Disposal or Recovery ..... 8

    2.3 Summary report on emissions and interpretation of environmental monitoring ..... 8

        2.3.1 *Surface Water*..... 8

        2.3.2 *Dust Emissions*..... 8

        2.3.3 *Noise Emissions* ..... 10

        2.3.4 *Bund, pipe and underground storage tanks integrity* ..... 11

        2.3.5 *Summary of resource and energy consumption* ..... 11

        2.3.6. *Water*..... 11

    2.4 Site infrastructure..... 11

        2.4.1 *In-place* ..... 11

    2.5 Progress report on proposals developed to minimise water demand..... 12

    2.6 PRTR Emission..... 12

3.0 Environmental objectives and targets – 2013. .... 13

    3.1 Summary of reported incidents and complaints..... 15

        3.1.1 *Reported Incidents Summary* ..... 15

        3.1.2 *Complaints:* ..... 15

    3.2 Review of nuisance controls ..... 15

        3.2.1 *Odour* ..... 15

        3.2.2 *Noise* ..... 15

        3.2.3 *Dust* ..... 15

        3.2.4 *Vermin*..... 15

        3.2.5 *Flies*..... 16

---

3.2.6 <i>Birds</i> .....	16
3.2.7 <i>Litter</i> .....	16
4.0 Development of Procedures on Site.....	16
5.0 Pollution Emission Register.....	17
6.0 Report on Programme for Public Information .....	17
Appendix A.....	18
Appendix B .....	19
Appendix C .....	20
Appendix D.....	21

## **1.0 Introduction**

Panda were granted the EPA Waste Licence W0263-01 on the 26<sup>th</sup> January 2011. This replaces the Waste Permit WPR 021/2 issued by South Dublin County Council. Under this licence, Panda will be able to process initially 150,000 tonnes per annum. Appendix A illustrates the current site layout.

### 1.1 Company details

Licence No:	W0263-01
Name:	Irish Packaging Recycling Ltd
Address:	Ballymount Road, Walkinstown, Dublin 12.
Telephone Number:	01 4602011
Fax Number:	01 4602210
Website:	<a href="http://www.panda.ie">www.panda.ie</a>

### 1.2 Management Structure

There are 30 employees either working directly or indirectly at the facility. Appendix B illustrates the organisational structure of the facility.

### 1.3 Financial Provision

A statement from our accountants is provided in Appendix C. At the present time the annual turnover and company assets are sufficient to offset environmental liabilities incurred during the course of operations and in the event that the company is closed.

### 1.4 Environmental Policy

In carrying out our function, IPR/Panda acknowledge that our activities impact upon the environment both through routine internal operations and the actions of our staff.

It is Panda's policy to protect the environment during all activities, both on and off-site.

This is achieved by:

- Strategic preparation and implementation of operating procedures (including an emergency response procedure).
- Utilizing BAT (Best Available Technology).
- Actively promoting environmental awareness amongst staff and clients through appropriate training and communication programs.
- Reduce energy use through effective education and awareness and the installation of energy efficient technology where appropriate.
- Implementing a policy of continuous improvement, by means of targeted objectives. All objectives and targets are monitored and up-dated accordingly.

IPR/Panda are committed to complying with all relevant environmental regulations and aim to supply a safe competitive and sustainable service with specific regards to the surrounding environment.

---

## 1.5 Activities

Under the waste licence W0263-01, IPR conducts the following activities:

***Licensed Waste Recovery Activities, in accordance with the Fourth Schedule of the Waste Management Acts, 1996 to 2010***

**Class 2.**

Recycling or reclamation of organic substances which are not used as solvents (including composting and other biological processes) (P).

**Class 3.**

Recycling or reclamation of metals and metal compounds.

**Class 4.**

Recycling or reclamation of other inorganic materials.

**Class 13.**

Storage of waste intended for submission to any activity referred to in a preceding paragraph of this Schedule, other than temporary storage, pending collection, on the premises where such waste is produced.

IPR accept material from commercial and industrial sectors throughout Ireland. The normal facility operating hours are 6am-5pm (Monday-Friday) & 6am-2pm (Saturdays). The facility is licensed to accept non-hazardous wastes only.

## 1.6 Waste Activities carried out at the Facility

Material accepted and dispatched at the facility is weighed using Genesys weighbridge software. The facility is used as a baling station. The facility accepts predominantly source segregated paper, cardboard, plastic and hangers. No hazardous waste, putrescible waste or liquid wastes are accepted at the facility.

The material is initially sorted in the facility using Forklifts, Shovel and teleporters, then loaded into one of three balers for baling. The resultant bales are stored for onward movement.

There is a dual weighbridge for incoming and outgoing material.

**1.7 Water Usage:**

Water for dust suppression and fire fighting is taken from a holding tank located on a neighbouring paper premises. Water to the office and amenities is taken from municipal supply and is metered by the council.

Water usage in the facility consists of:

- Dust Suppression.
- Fire fighting

**2.0 Summary Information**

**2.1 Waste Received**

The waste received at the facility from the 1<sup>st</sup> January 2014 to the 31<sup>st</sup> December 2014 was 143,080.121 tonnes.

**Table 1.** Waste received in 2014

<b>EWC Code</b>	<b>Waste Description</b>	<b>Tonnage</b>
20 01 01	Paper and Cardboard	32,469.461
20 01 39	Plastic	175.544
20 03 01	Residue	451.274
15 01 01	Paper and Cardboard	98,706.469
15 01 02	Plastic Packaging	9,072.851
15 01 03	Wood	1,323.809
15 01 04	Steel	116.586
15 01 06	Mixed Packaging	145.413
20 01 38	Wood	4.44

16 01 03	Used Tires	167.382
20 01 36	Weee	2.85
19 12 01	Paper and Cardboard	444.041

**2.2 Waste Transferred Off-Site for Disposal or Recovery**

See Appendix D (PRTR) for the breakdown of the different destinations used for the waste removed off site by EWC Code.

**Table 2:** Outgoing destination and recovery rate.

Destination	Tonnage	%
Disposal	0	0
Recovery	140,522.139	100

**2.3 Summary report on emissions and interpretation of environmental monitoring**

Under Schedule C of the licence W0263-01, IPR are required to monitor storm water emissions, noise and ambient air monitoring (Dust). The following sub-headings detail the results from independent laboratories of the different parameters and the emission limit values ELV's set by the EPA and any complaints and incident that may have occurred during the year.

**2.3.1 Surface Water**

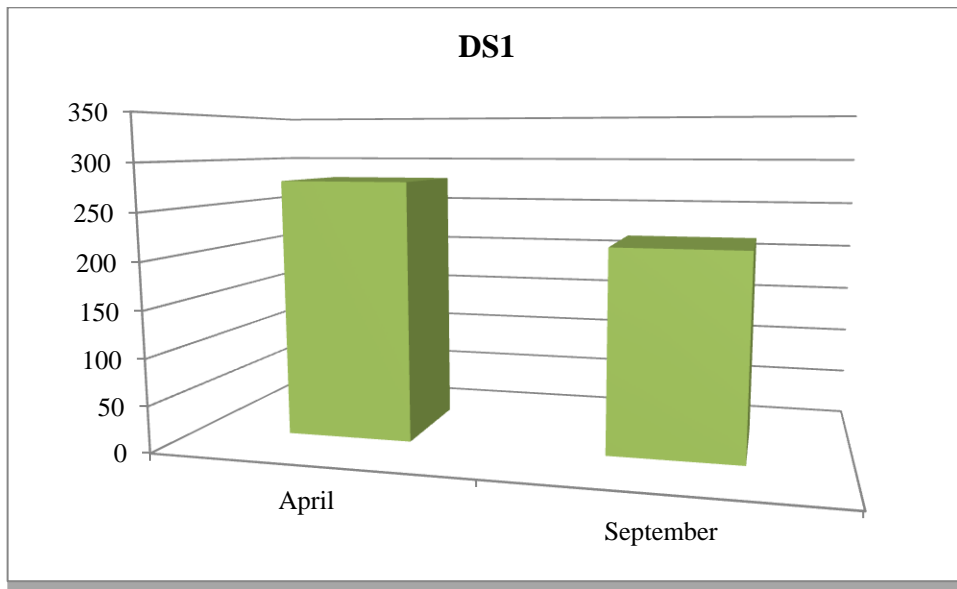
Strom water passes through a silt trap prior to being discharged to the stream to the South of the facility.



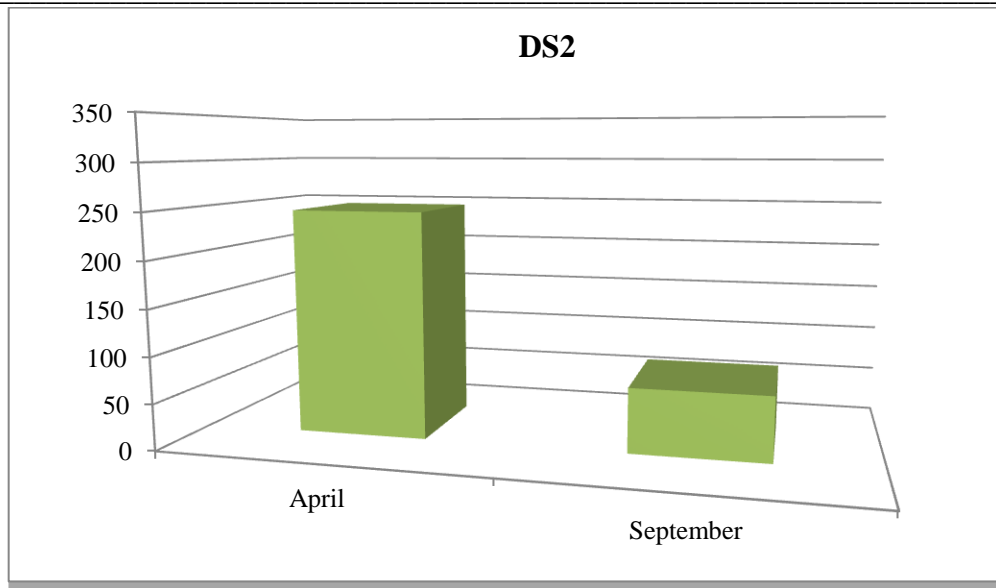
2.3.2 Dust Emissions

As per schedule B5 for dust deposition limits, there are currently three sampling locations (AD1, AD2 and AD3). Monitoring is required annually on site. Figs 1-3 illustrate dust recordings for 2014.

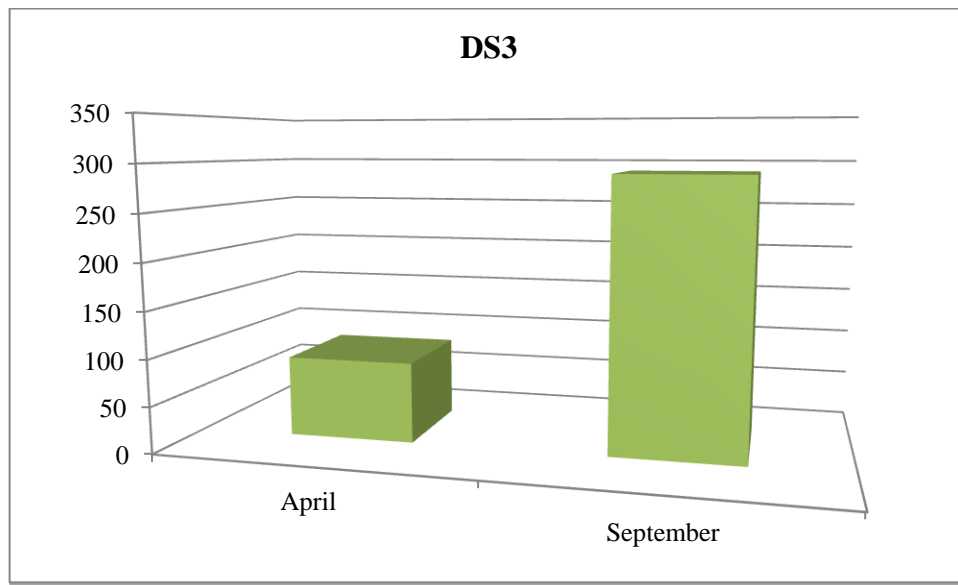
**Fig. 1:** Dust emission results for DS1 (AD1) in  $\text{mg m}^{-2} \text{d}^{-1}$



**Fig. 2:** Dust emission results for DS2 (AD2) in  $\text{mg m}^{-2} \text{d}^{-1}$



**Fig. 3:** Dust emission results for DS3 (AD3) in mg m<sup>-2</sup> d<sup>-1</sup>



As per Schedule B.5, the dust deposition limit for the site is 350 mg m<sup>-2</sup> d<sup>-1</sup>. AD1, AD2 and AD3 are well within licenced ELV's.

### 2.3.3 Noise Emissions

Noise emissions are monitored according to Schedule B.4 and the emission limit values (ELV) set out in Schedule C.5 of the licence. An independent competent consultant was commissioned to conduct the noise sampling for the facility. Table 3 details results of noise monitoring conducted in 2014.

**Table 3:**

Noise Emissions 2014

#### Day - readings

Locn	Date	Time	Leq	Lmin	L10	L90	Comments
AN1	22 <sup>nd</sup> Dec'14	18.32- 19.32	58.6	48.1	61.1	55.0	Road traffic dominant at 52/53 dBA
AN2	22 <sup>nd</sup> Dec'14	18.21-19.21	59.8	47.8	62.1	52.0	Road traffic and noise from trucks entering and leaving the site

#### Night - readings

Locn	Date	Time	Leq	Lmin	L10	L90	Comments
AN1	22 <sup>nd</sup> -23 <sup>rd</sup> Dec'14	00.32-01.32	52.9	45.7	56.1	46.6	Road traffic noise
AN2	23 <sup>rd</sup> Dec'14	00.06-01.06	53.7	45.4	57.3	46.8	Road traffic noise

### 2.3.4 Bund, pipe and underground storage tanks integrity

AQS environmental solutions carried out pipeline integrity testing in September 2014.

Rowan Engineering carried out bund integrity testing in July 2013.

### 2.3.5 Summary of resource and energy consumption

**Table 4:** Summary of Energy Consumption from 1<sup>st</sup> January 2014 to December 2014.

Resource	Quantity
Diesel	103,459.7 litres
Electricity	671.23 MWhr

### 2.3.6. *Water*

Water is obtained from a shared holding tank and water for the office and amenities is obtained from the municipal water supply.

## 2.4 Site infrastructure

The following are details on infrastructure in the facility.

### 2.4.1 *In-place*

The current site infrastructure is outlined below (List 1). List 2 details the waste processing equipment used on site.

#### **List 1:** Current site infrastructure

1. Offices
2. Dual Weighbridge.
3. One x Waste processing building
4. One sprinkling system
5. Canteen & toilets.
6. Fuel Depot
10. Fencing around the site

#### **List 2:** Waste processing equipment

8 x Forklifts

1 x Roadsweeper

1 x Teleporter

2 x Track machines

2 x Shovels

---

There is sufficient back up within the group if the forklifts, roadsweeper, shovel, track machine or the teleporter's break down.

#### 2.5 Progress report on proposals developed to minimise water demand

Water usage is minimised on site due to the nature of the materials handled. Therefore there is no requirement to reduce water usage.

#### 2.6 PRTR Emission.

IPR's PRTR emission return is provided in Appendix D.

**3.0 Environmental objectives and targets – 2015.**

No	Objective & Target	Method of Achievement	Responsibility	Timescale	Complete in 2015
1	<b>Assess the Effectiveness of Nuisance Control Procedures</b>	Continually review and assess all nuisance control procedures to ensure minimal impact on surrounding area	Facility Manager	Ongoing	Continuous
		Ensure yards are cleaned at the end of each working day	Operatives	Ongoing	Continuous
2	<b>Prevent Water Pollution from Run-Off</b>	Complete a Firewater Risk Assessment	Facility Manager/ Env Dept	2015	Sept, 2015
		Ensure all gullies are maintained and regularly cleaned	Facility Manager/ Operatives	Ongoing	Continuous
		Pipeline Integrity test to be completed	Facility Manager	September 2014	Complete
		Install Class I full retention separator	Facility Manager	Feb 2013	Complete
		A bund integrity test is to be completed.	Facility Manager	August 2013	Due August 2016
3	<b>Assess &amp; Review Resource &amp; Energy Consumption at the site</b>	Carry out an energy audit on the site	Facility Manager	August 2015	Not Complete

4	<b>Maintain and Develop the Environmental Management System</b>	Maintain EMS Documentation on site	Facility Manager/ Env Dept	Continuous	Continuous
		Up date procedures to reflect operational and control changes	Facility Manager/ Env Dept	Continuous	Continuous
5	<b>Assess Waste Acceptance Procedures so as to minimise volume of erratics</b>	Communicate with customers about the items that are not acceptable in the in-coming wastes	Facility Manager/ Sales Reps	Continuous	Continuous
6	<b>Environmental Monitoring</b>	Implement the Environmental Monitoring Programme specified in the Waste Licence	Facility Manager	Continuous	Continuous
		Investigate any accidents of emission limit values	Facility Manager	Continuous	Continuous
7	<b>Ensure and implement a training programme</b>	Identify staff training requirements and provide relevant training	Facility Manager/ Env Dept	Continuous	Continuous
8	<b>To control any emergencies that may arise at the facility</b>	Review and Update the Emergency Response Procedure	Facility Manager/ Env Dept	Jan 2015	Complete
9	<b>Prepare a Standard Operating Procedures Manual</b>	Update the SOP manual relevant to site operations	Facility Manager/ Env Dept	Continuous	Continuous
10	<b>Ensure lighting in waste handling buildings provide sufficient lighting so as to assess incoming waste</b>	Clean all light fittings in waste handling buildings	Environmental Manager/ Yard Supervisor	May 2015	Not Complete
13	<b>Office Recycling</b>	Implement office recycling	Office Manager/ Environmental Department	Continuous	Continuous
		Continuation of training regarding office recycling	Office Manager/ Environmental Department	Continuous	Continuous
14	<b>Fire Detection</b>	To reduce the risk from fire in the facility – Link Sprinkler system into monitored alarm panel.	Facility Manager	2015	Q1

### 3.1 Summary of reported incidents and complaints

#### *3.1.1 Reported Incidents Summary*

No incidents occurred during this licence in 2014.

#### *3.1.2 Complaints:*

No complaints occurred during this licence in 2014.

### 3.2 Review of nuisance controls

#### *3.2.1 Odour*

There is minimal risk of odour nuisance due to the nature of the waste accepted at the facility. However, IPR's in house roadsweeper cleans the concreted yard routinely throughout the day.

#### *3.2.2 Noise*

The monitoring results showed that noise is not a nuisance, as only bobcats, teleporters and forklifts are operational on site.

#### *3.2.3 Dust*

A dust suppression system is installed in the shed and on the external (South-western side) of the building. The roadsweeper is frequently used on all concreted yards. Fire hoses are also available to spray water on concreted yards as required.

#### *3.2.4 Vermin*

A file on vermin control is maintained in the office. A sub-contractor is used to control any vermin on site.



### *3.2.5 Flies*

Good housekeeping practices are used to prevent fly infestations. The yard is kept clean using a road sweeper and all waste for disposal is removed from the facility within 48 hours, or 72 hours in the case of a bank holiday weekends.

### *3.2.6 Birds*

In order to avoid having birds as a nuisance, litter control is practised at all times, this includes regular litter patrols. Birds are not attracted, due to the nature of the material handled on site.

### *3.2.7 Litter*

A designated member of staff carries out litter inspections of the facility regularly and gathers any litter deposited. The yard is kept clean using a road sweeper

## **4.0 Development of Procedures on Site**

The Environmental Management System has been developed and includes the following Standard Operating Procedure;

- Corrective Action;
- Daily Site Inspections;
- Nuisance Management;
- Emergency Response;
- Unacceptable Waste;
- Communications Programme;
- Storage of Fuels and Oils;
- Training and Awareness;
- Environmental Complaints;

A Daily Site Inspection Sheet has been developed to record any potential nuisance on or points to note including a map of the facility for reference as to the location of the nuisance.

### **5.0 Pollution Emission Register**

After consulting the PERL list IPR are not using any substance that is listed at present.

### **6.0 Report on Programme for Public Information**

IPR have a shared website with their sister company Panda. The website was recently re-developed; one of the features is an Environmental page where the following can be downloaded,

- Facility licences (W0140-03, W0261-01, **W0263-01**)
- Multi-regional Waste collection permit (WCP-DC-09-1188-01),
- Environmental Policy,

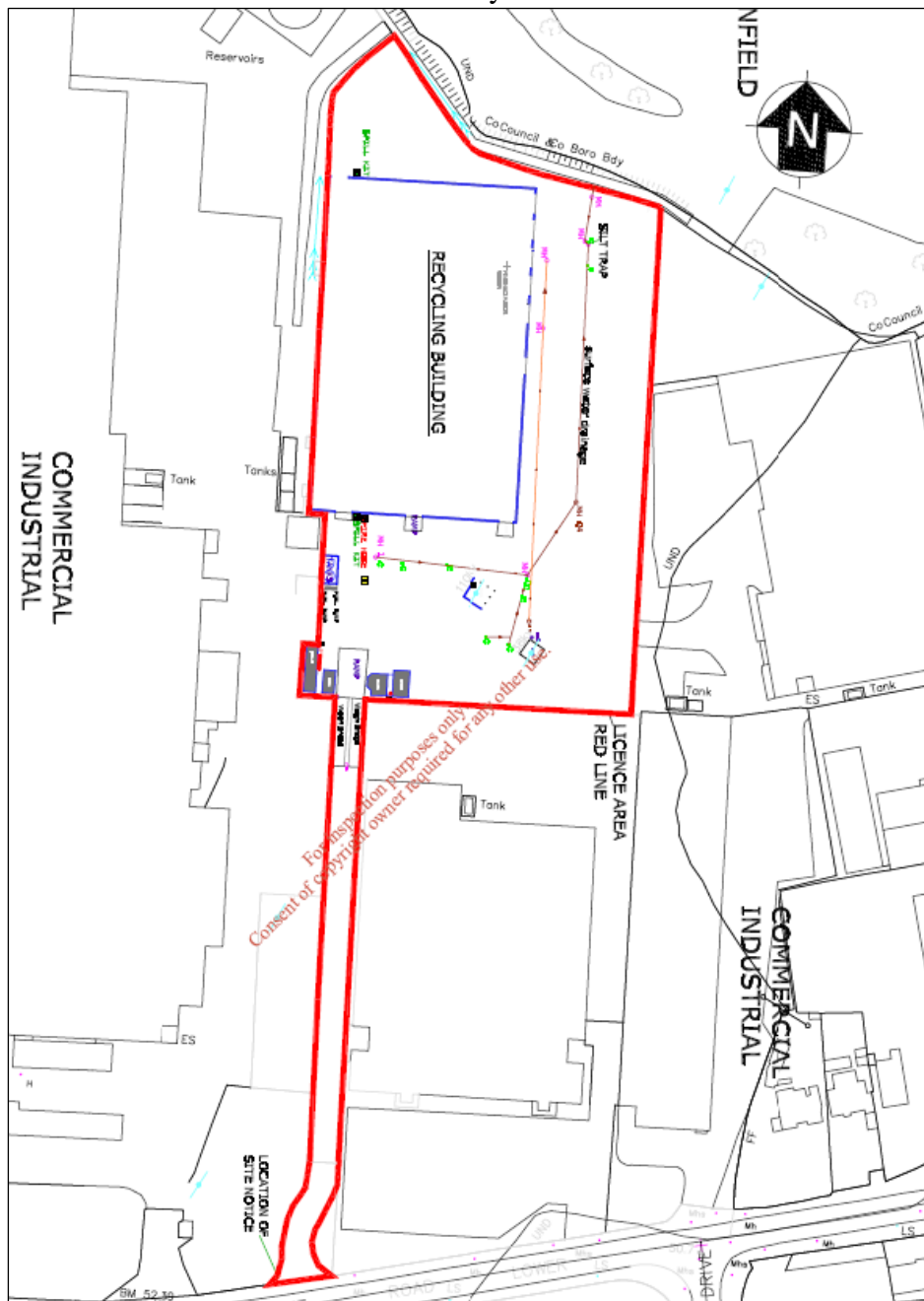
Recycling certificates are issued to customers, on request, so that they can determine their recycling on a monthly basis.

During the reporting period there were no requests from members of the public to inspect any Environmental Records.

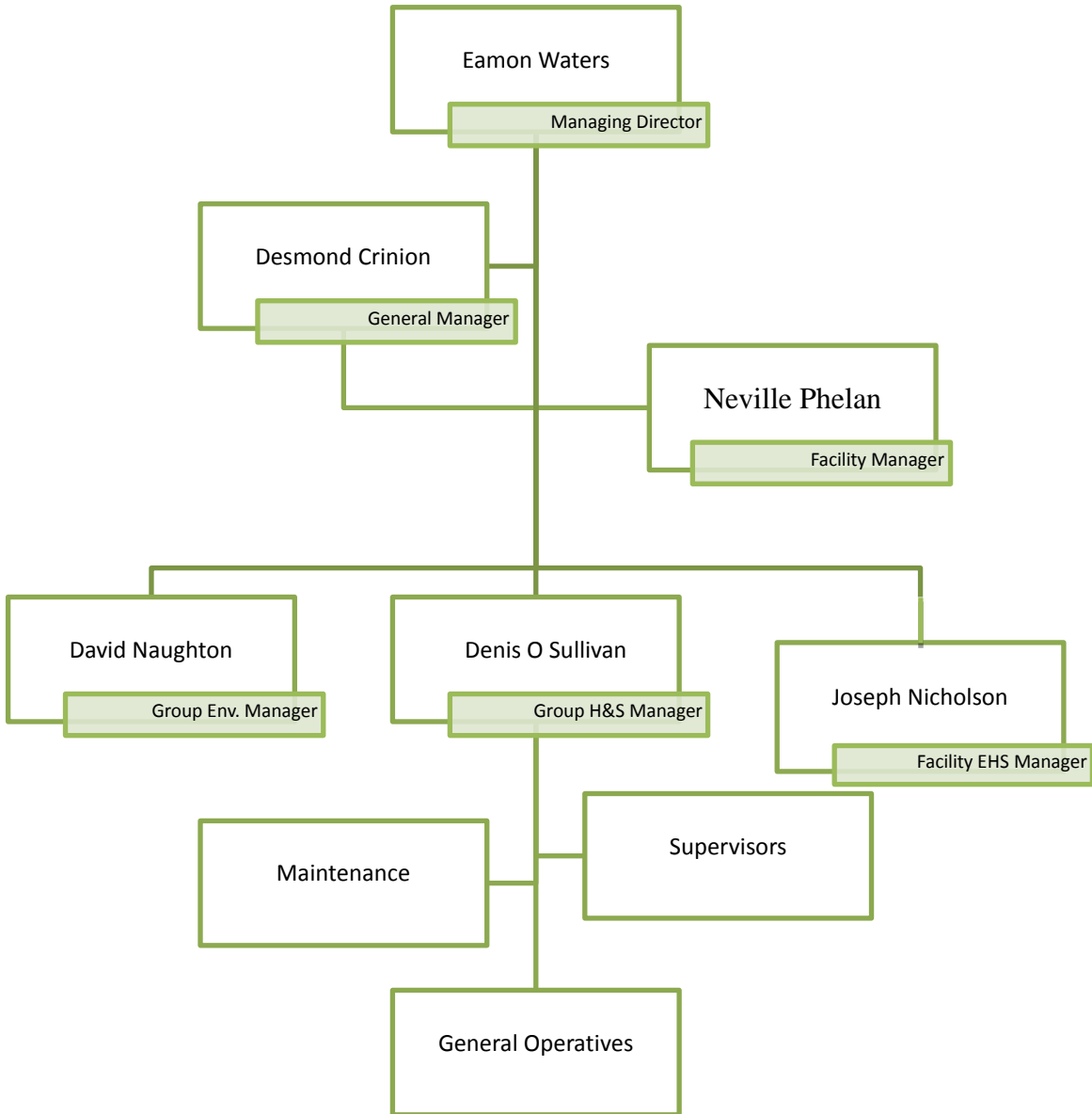
The information in the Annual Environmental Report is true and accurate representation of the activities conducted by IPR in 2014.

# Appendix A

Site Layout



## Appendix B



## Appendix C

### Financial Statement



Fagan Lynch Donnellan  
Chartered Accountants & Registered Auditors

Our Ref: VL/NMcK

18<sup>th</sup> March 2015

Environmental Protection Agency,  
McCumiskey House,  
Richview,  
Clonskeagh Road,  
Dublin 14.

**Re: Irish Packaging Recycling**

Dear Sir,

We act as Auditors and Taxation Agents for the above and have acted in this capacity for the past 8 years.

We wish to confirm as follows:

1. Statutory Accounts have been filed for all years up to 31.12.2013 with the Companies Office.

Accounts and Tax Returns have also been filed with Inspector of Taxes for all years to 31<sup>st</sup> December 2013.

2. The Company trades profitably and is on a very sound financial footing.

If you have any queries, please do not hesitate to contact us.

Yours faithfully,



FAGAN LYNCH DONNELLAN

Newbridge House, Athlumney, Navan, Co. Meath  
Tel: (046) 9033700 Fax: (046) 9029341 e-mail: info@fld.ie www.fld.ie

John Fagan FCA Vincent Lynch FCA Mark McCartney FCCA

Registered to carry on audit work and authorised to carry on investment business by the Institute of Chartered Accountants in Ireland (ICAI).  
Chartered Accountants Ireland is the operating name of ICAI.



## Appendix D

PRTR



| PRTR# : W0263 | Facility Name : Irish Packaging Recycling | Filename : W0263\_2014 - prtr.xls | Return Year : 2014 |

[Guidance to completing the PRTR workbook](#)

## AER Returns Workbook

Version 1.1.18

<b>REFERENCE YEAR</b>	2014
-----------------------	------

### 1. FACILITY IDENTIFICATION

Parent Company Name	Irish Packaging Recycling
Facility Name	Irish Packaging Recycling
PRTR Identification Number	W0263
Licence Number	W0263-01

#### Classes of Activity

No.	class_name
-	Refer to PRTR class activities below

Address 1	Ballymount Road
Address 2	Walkinstown
Address 3	Dublin 12
Address 4	
	Dublin
Country	Ireland
Coordinates of Location	-6.34193 53.31824
River Basin District	IEEA
NACE Code	3832
Main Economic Activity	Recovery of sorted materials
<b>AER Returns Contact Name</b>	Joe Nicholson
<b>AER Returns Contact Email Address</b>	joe.nicholson@ipr.ie
<b>AER Returns Contact Position</b>	EHS officer
<b>AER Returns Contact Telephone Number</b>	
<b>AER Returns Contact Mobile Phone Number</b>	086 022 6109
<b>AER Returns Contact Fax Number</b>	
<b>Production Volume</b>	0.0
<b>Production Volume Units</b>	
<b>Number of Installations</b>	0
<b>Number of Operating Hours in Year</b>	0
<b>Number of Employees</b>	30
<b>User Feedback/Comments</b>	
<b>Web Address</b>	www.panda.ie

### 2. PRTR CLASS ACTIVITIES

Activity Number	Activity Name
50.1	General

### 3. SOLVENTS REGULATIONS (S.I. No. 543 of 2002)

Is it applicable?	
Have you been granted an exemption ?	
If applicable which activity class applies (as per Schedule 2 of the regulations) ?	
Is the reduction scheme compliance route being used ?	

### 4. WASTE IMPORTED/ACCEPTED ONTO SITE

[Guidance on waste imported/accepted onto site](#)

Do you import/accept waste onto your site for on-site treatment (either recovery or disposal activities) ?	
--	--

This question is only applicable if you are an IPPC or Quarry site

4.1 RELEASES TO AIR

[Link to previous years emissions data](#)

| PRTR#: W0263 | Facility Name : Irish Packaging Recycling | Filename : W0263\_2014 - prtr.xls | Return Year : 2014 |

26/03/2015 10:50

SECTION A : SECTOR SPECIFIC PRTR POLLUTANTS

RELEASES TO AIR					Please enter all quantities in this section in KGs			
POLLUTANT		METHOD			ADD EMISSION POINT	QUANTITY		
No. Annex II	Name	M/C/E	Method Used		Emission Point 1	T (Total) KG/Year	A (Accidental) KG/Year	F (Fugitive) KG/Year
			Method Code	Designation or Description				
					0.0	0.0	0.0	0.0

ADD NEW ROW | DELETE ROW \* \* Select a row by double-clicking on the Pollutant Name (Column B) then click the delete button

SECTION B : REMAINING PRTR POLLUTANTS

RELEASES TO AIR					Please enter all quantities in this section in KGs					
POLLUTANT		METHOD			ADD EMISSION POINT	QUANTITY				
No. Annex II	Name	M/C/E	Method Used		Emission Point 1	Emission Point 2	Emission Point 3	T (Total) KG/Year	A (Accidental) KG/Year	F (Fugitive) KG/Year
			Method Code	Designation or Description						
					0.0	0.0	0.0	0.0	0.0	0.0

ADD NEW ROW | DELETE ROW \* \* Select a row by double-clicking on the Pollutant Name (Column B) then click the delete button

SECTION C : REMAINING POLLUTANT EMISSIONS (As required in your Licence)

RELEASES TO AIR					Please enter all quantities in this section in KGs					
POLLUTANT		METHOD			ADD EMISSION POINT	QUANTITY				
Pollutant No.	Name	M/C/E	Method Used		Emission Point 1	Emission Point 2	Emission Point 3	T (Total) KG/Year	A (Accidental) KG/Year	F (Fugitive) KG/Year
			Method Code	Designation or Description						
210	Dust	C	ALT		0.09	0.06	0.07	0.22	0.0	0.0

ADD NEW ROW | DELETE ROW \* \* Select a row by double-clicking on the Pollutant Name (Column B) then click the delete button



4.2 RELEASES TO WATERS

[Link to previous years emissions data](#)

| PRTR# : W0263 | Facility Name : Irish Packaging Recycling | Filename : W0263\_2014 - prtr.xls | Return Year : 2014 |

26/03/2015 10:50

**SECTION A : SECTOR SPECIFIC PRTR POLLUTANTS**

Data on ambient monitoring of storm/surface water or groundwater, conducted as part of your licence requirements, should NOT be submitted under AER/ PRTR

RELEASES TO WATERS					Please enter all quantities in this section in KGs			
POLLUTANT					ADD EMISSION POINT	QUANTITY		
No. Annex II	Name	M/C/E	Method Used		Emission Point 1	T (Total) KG/Year	A (Accidental) KG/Year	F (Fugitive) KG/Year
			Method Code	Designation or Description				
					0.0	0.0	0.0	0.0

ADD NEW ROW    DELETE ROW \*    \* Select a row by double-clicking on the Pollutant Name (Column B) then click the delete button

**SECTION B : REMAINING PRTR POLLUTANTS**

RELEASES TO WATERS					Please enter all quantities in this section in KGs			
POLLUTANT					ADD EMISSION POINT	QUANTITY		
No. Annex II	Name	M/C/E	Method Used		Emission Point 1	T (Total) KG/Year	A (Accidental) KG/Year	F (Fugitive) KG/Year
			Method Code	Designation or Description				
					0.0	0.0	0.0	0.0

ADD NEW ROW    DELETE ROW \*    \* Select a row by double-clicking on the Pollutant Name (Column B) then click the delete button

**SECTION C : REMAINING POLLUTANT EMISSIONS (as required in your Licence)**

RELEASES TO WATERS					Please enter all quantities in this section in KGs			
POLLUTANT					ADD EMISSION POINT	QUANTITY		
Pollutant No.	Name	M/C/E	Method Used		Emission Point 1	T (Total) KG/Year	A (Accidental) KG/Year	F (Fugitive) KG/Year
			Method Code	Designation or Description				
					0.0	0.0	0.0	0.0

4.3 RELEASES TO WASTEWATER OR SEWER

[Link to previous years emissions data](#)

| PRTR#: W0263 | Facility Name : Irish Packaging Recycling | Filename : W0263\_2014 - prtr.xls |

26/03/2015 10:50

SECTION A : PRTR POLLUTANTS

OFFSITE TRANSFER OF POLLUTANTS DESTINED FOR WASTE-WATER TREATMENT OR SEWER					Please enter all quantities in this section in KGs			
POLLUTANT		METHOD			ADD EMISSION POINT	QUANTITY		
No. Annex II	Name	M/C/E	Method Used		Emission Point 1	T (Total) KG/Year	A (Accidental) KG/Year	F (Fugitive) KG/Year
			Method Code	Designation or Description				
					0.0	0.0	0.0	0.0

\* Select a row by double-clicking on the Pollutant Name (Column B) then click the delete button

SECTION B : REMAINING POLLUTANT EMISSIONS (as required in your Licence)

OFFSITE TRANSFER OF POLLUTANTS DESTINED FOR WASTE-WATER TREATMENT OR SEWER					Please enter all quantities in this section in KGs			
POLLUTANT		METHOD			ADD EMISSION POINT	QUANTITY		
Pollutant No.	Name	M/C/E	Method Used		Emission Point 1	T (Total) KG/Year	A (Accidental) KG/Year	F (Fugitive) KG/Year
			Method Code	Designation or Description				
					0.0	0.0	0.0	0.0

4.4 RELEASES TO LAND

[Link to previous years emissions data](#)

| PRTR#: W0263 | Facility Name : Irish Packaging Recycling | Filename : W0263\_2014 - prtr.xls | Return Year : 2014 |

26/03/2015 10:50

SECTION A : PRTR POLLUTANTS

RELEASES TO LAND					Please enter all quantities in this section in KGs		
POLLUTANT		METHOD			ADD EMISSION POINT	QUANTITY	
No. Annex II	Name	M/C/E	Method Used		Emission Point 1	T (Total) KG/Year	A (Accidental) KG/Year
			Method Code	Designation or Description			
					0.0	0.0	0.0

\* Select a row by double-clicking on the Pollutant Name (Column B) then click the delete button

SECTION B : REMAINING POLLUTANT EMISSIONS (as required in your Licence)

RELEASES TO LAND					Please enter all quantities in this section in KGs		
POLLUTANT		METHOD			ADD EMISSION POINT	QUANTITY	
Pollutant No.	Name	M/C/E	Method Used		Emission Point 1	T (Total) KG/Year	A (Accidental) KG/Year
			Method Code	Designation or Description			
					0.0	0.0	0.0

5. ONSITE TREATMENT & OFFSITE TRANSFERS OF WASTE

| PRTR#: W0263 | Facility Name : Irish Packaging Recycling | Filename : W0263\_2014 - prtr.xls | Return Year : 2014 |

26/03/2015 10:50

Please enter all quantities on this sheet in Tonnes

96

Transfer Destination	European Waste Code	Hazardous	Quantity (Tonnes per Year)	Description of Waste	Waste Treatment Operation	Method Used		Location of Treatment	Haz Waste : Name and Licence/Permit No of Next Destination Facility Non Haz Waste: Name and Licence/Permit No of Recover/Disposer	Haz Waste : Address of Next Destination Facility Non Haz Waste: Address of Recover/Disposer	Name and License / Permit No. and Address of Final Recoverer / Disposer (HAZARDOUS WASTE ONLY)	Actual Address of Final Destination i.e. Final Recovery / Disposal Site (HAZARDOUS WASTE ONLY)
						M/C/E	Method Used					
To Other Countries	15 01 01	No	25.5	paper and cardboard packaging	R12	M	Weighed	Abroad	AES, Broker - China	Cappincur, Tullamore, Co. Offaly, Ireland		
To Other Countries	15 01 01	No	3118.74	paper and cardboard packaging	R12	M	Weighed	Abroad	Agnail Ltd, Broker - China	88 Cherrywood Cresent, Clondalkin, Dublin 22, Ireland		
To Other Countries	15 01 01	No	750.19	paper and cardboard packaging	R12	M	Weighed	Abroad	Agnail Ltd, Broker - Spain	88 Cherrywood Cresent, Clondalkin, Dublin 22, Ireland		
To Other Countries	15 01 01	No	1366.78	paper and cardboard packaging	R12	M	Weighed	Abroad	Agnail Ltd, Broker - UK	88 Cherrywood Cresent, Clondalkin, Dublin 22, Ireland		
Within the Country	15 01 01	No	4.3	paper and cardboard packaging	R12	M	Weighed	Offsite in Ireland	ROC Recycling Ltd, WFP-LS-11-0001-01	Ballymacken Ind Est, Ballymacken, Portlaoise, Co. Laois, Ireland		
To Other Countries	15 01 01	No	128.92	paper and cardboard packaging	R12	M	Weighed	Abroad	Boost Recycling Ltd, Broker - Netherlands	e, CB25 OAN, United Kingdom		
To Other Countries	15 01 01	No	205.82	paper and cardboard packaging	R12	M	Weighed	Abroad	Failand Paper Services Ltd., Broker - UK	11 Triangle South, Clifton, Bristol, UK BS8 1EY, United Kingdom		
To Other Countries	15 01 01	No	43.28	paper and cardboard packaging	R12	M	Weighed	Abroad	Highlander International Recycling Ltd, Broker - UK	Kilbridge, Glasgow, G74 5NE, United Kingdom		
To Other Countries	15 01 01	No	1716.12	paper and cardboard packaging	R12	M	Weighed	Abroad	Jiangsu Provincial Foreign Trade Corp., Broker/Mill - China	2602 Mansion Xinhua Building, 55 Zhonshan road Nanjiug City, Jiangsu Province, China		
To Other Countries	15 01 01	No	7248.6	paper and cardboard packaging	R12	M	Weighed	Abroad	Mark Lyndon Paper Ent Uk Ltd, Broker - China	12 The Triangle, Nottingham, NG2 1AE, United Kingdom		
Within the Country	15 01 01	No	6.52	paper and cardboard packaging	R12	M	Weighed	Offsite in Ireland	Leech Papers, WFP-DC-10-0017-01	Shamrock Place, North Strand, Dublin 1, Ireland		
Within the Country	15 01 01	No	23.9	paper and cardboard packaging	R12	M	Weighed	Offsite in Ireland	Leinster Environmental, Wp 2004/03	Dundalk, Co. Louth, Ireland		
To Other Countries	15 01 01	No	17198.96	paper and cardboard packaging	R12	M	Weighed	Abroad	Marwin Environmental Trading Ltd, Broker - India	7 Glyntown Heights, Glanmire, Co. Cork, Ireland		
To Other Countries	15 01 01	No	4.9	paper and cardboard packaging	R12	M	Weighed	Abroad	Marwin Environmental Trading Ltd, Broker - Ireland	7 Glyntown Heights, Glanmire, Co. Cork, Ireland		
To Other Countries	15 01 01	No	286.94	paper and cardboard packaging	R12	M	Weighed	Abroad	Marwin Environmental Trading Ltd, Broker - Netherlands	7 Glyntown Heights, Glanmire, Co. Cork, Ireland		
To Other Countries	15 01 01	No	357.9	paper and cardboard packaging	R12	M	Weighed	Abroad	Materia Environment Ltd., Broker - India	Kipper House, Scilly, Kinsale, Co. Cork, Ireland		

To Other Countries	1 01	No	6939.3 paper and cardboard packaging	R12	M	Weighed	Abroad	Midland Waste, Broker - China	Proudstown Road, Navan, Co. Meath, Ireland Adamson House, Towers Business Park, Wilmlov Rd Didsbury Manchester, M20
To Other Countries	15 01 01	No	17640.09 paper and cardboard packaging	R12	M	Weighed	Abroad	MLM Ltd, Broker - China	2YY, United Kingdom
To Other Countries	15 01 01	No	257.46 paper and cardboard packaging	R12	M	Weighed	Abroad	Oudegem Papier Mill, Broker/Mill - Belgium	Oude Baan 120, B-9200, Oudegem, Belgium Rathdown Cl Lissue Ind Est, Moira Road, Lisburn Co Antrim, BT28 2RB, United Kingdom
To Other Countries	15 01 01	No	5.86 paper and cardboard packaging	R12	M	Weighed	Abroad	Paperman Products, WMX19/41	Baanhoekweg 4, 3313 La Dordrecht, Netherlands
To Other Countries	15 01 01	No	686.18 paper and cardboard packaging	R12	M	Weighed	Abroad	Peute Recycling BV, Broker - Netherlands	
To Other Countries	15 01 01	No	25.66 paper and cardboard packaging	R12	M	Weighed	Abroad	PT Pabrick Kertas Indonesia Pakerin, Broker/Mill - Indonesia	JL Kertopaten No. 3, Surabaya 60145, East Java, Indonesia
To Other Countries	15 01 01	No	24.96 paper and cardboard packaging	R12	M	Weighed	Abroad	PT Surabaya Meta Box, Broker/Mill - Indonesia	JL Bongkaran 64 - 66, PO box 1061 SBY 60010, Surabaya, Indonesia 7th Floor Hyde House, Edgeware
To Other Countries	15 01 01	No	1706.12 paper and cardboard packaging	R12	M	Weighed	Abroad	Reliance Fibres Ltd, Broker - India	road, London, NW96LH, United Kingdom York Street
To Other Countries	15 01 01	No	3417.23 paper and cardboard packaging	R12	M	Weighed	Abroad	Saica Natur, Broker - UK	Mill, Audenshaw, Manchester, M345TN, United Kingdom 543 Hythe Lane, Larkfield
To Other Countries	15 01 01	No	15119.78 paper and cardboard packaging	R12	M	Weighed	Abroad	Sca.Emd Recycling, Broker - China	Aylesford, Kent, M320 7PE, United Kingdom Ballymount
To Other Countries	15 01 01	No	4748.17 paper and cardboard packaging	R12	M	Weighed	Abroad	Smurfit Recycling, Broker - India	road, Walkinstown, Dublin, Ireland Unit 807 8/F
To Other Countries	15 01 01	No	0.7 paper and cardboard packaging	R12	M	Weighed	Abroad	Vanden Global Ltd, Broker - Taiwan	Mackennycentre, 660 Castel Peak road, Kowloon, Hong Kong Unit 807 8/F
To Other Countries	15 01 01	No	0.216 paper and cardboard packaging	R12	M	Weighed	Abroad	Vanden Global Ltd, Broker - Hong Kong	Mackennycentre, 660 Castel Peak road, Kowloon, Hong Kong Unit 807 8/F
To Other Countries	15 01 01	No	0.81 paper and cardboard packaging	R12	M	Weighed	Abroad	Vanden Global Ltd, Broker - Netherlands	Mackennycentre, 660 Castel Peak road, Kowloon, Hong Kong
To Other Countries	15 01 01	No	827.52 paper and cardboard packaging	R12	M	Weighed	Abroad	Vipa Luasanna S.A, Galeries Benjamin Constan 1 Case Postable 7700 1002 Lausanne (Ch) . Switzerland	Gaeries Benjamin Constan 1, Case Postable 7700 1002 Lausanne, Switzerland

To Other Countries	01 01	No	2263.36	paper and cardboard packaging	R12	M	Weighed	Abroad	Wuxi Longchem Paper Co Ltd,Broker / Mill - China	43 Zhongxing West Rd,Loushe Town,Huishan District Wuxi,Jiangsu,China
To Other Countries	15 01 01	No	1545.26	paper and cardboard packaging	R12	M	Weighed	Abroad	Zhongshan Rengo Hung Hing Paper Manufacturing Company,Broker / Mill - China	105 national highway west side of Zhongshan ,San Qiao Shaxi Town,Zhongshan ,,,China
To Other Countries	15 01 01	No	13141.76	paper and cardboard packaging	R12	M	Weighed	Abroad	Zhongshan Yongfa Paper Industries Co Ltd,Broker / Mill - China	In Zhongshan Sugar Factory,Huangpu Town,Zhongshan City,,,China
Within the Country	15 01 01	No	178.6	paper and cardboard packaging	R12	M	Weighed	Offsite in Ireland	Rebox ,Exempt AES,WCPNWCPO-08-10601-02	2B Kylemore Ind Est,Ballyfermot,Dublin 10,,,Ireland
Within the Country	15 01 02	No	8.88	plastic packaging	R12	M	Weighed	Offsite in Ireland		Cappincur,,,Tullamore,Co. Offaly,Ireland
To Other Countries	15 01 02	No	270.66	plastic packaging	R12	M	Weighed	Abroad	Agnail Ltd,Broker - China	88 Cherrywood Cresent,Clondalkin,Dublin 22,,,Ireland
To Other Countries	15 01 02	No	5.06	plastic packaging	R12	M	Weighed	Abroad	Agnail Ltd,Broker -UK	88 Cherrywood Cresent,Clondalkin,Dublin 22,,,Ireland
Within the Country	15 01 02	No	15.4	plastic packaging	R12	M	Weighed	Offsite in Ireland	ROC Recycling Ltd,WFP-LS-11-0001-01	Ballymacken Ind Est,Ballymacken ,Portlaoise,Co. Laois,Ireland
To Other Countries	15 01 02	No	208.12	plastic packaging	R12	M	Weighed	Abroad	Boost Recycling Ltd,Broker - Belgium	47 Swaffham Road,Burwell,Cambridgeshire,CB25 OAN,United Kingdom
To Other Countries	15 01 02	No	61.96	plastic packaging	R12	M	Weighed	Abroad	Boost Recycling Ltd,Broker - China	47 Swaffham Road,Burwell,Cambridgeshire,CB25 OAN,United Kingdom
To Other Countries	15 01 02	No	21.18	plastic packaging	R12	M	Weighed	Abroad	Cherrypipes ltd,Broker - UK	12 Derryhirk Road,Dungannon,,,BT7166N H,United Kingdom
Within the Country	15 01 02	No	16.38	plastic packaging	R12	M	Weighed	Offsite in Ireland	Cynar Recycling Ltd,WFP-LS-09-0005-01	Cynar House,Clonminam Ind Est,Portlaoise,Co. Laois,Ireland
To Other Countries	15 01 02	No	71.62	plastic packaging	R12	M	Weighed	Abroad	Enwaco BVBA,facility Filmco Ltd,WFP--TS-10-1003-01	Europark 114,Lanaken,Linburg,,,Belgium
Within the Country	15 01 02	No	3.24	plastic packaging	R12	M	Weighed	Offsite in Ireland		Ballylynch,Carrick on Suir,Tipperary,,,Ireland
To Other Countries	15 01 02	No	208.6	plastic packaging	R12	M	Weighed	Abroad	GFSL ltd,Broker - UK	96 Toft Hill Bishop Auckland Durham DL14 OJA United Kingdom,Bishop Auckland,Durham,DL14OJAU nited Kingdom,Ireland

Within the Country	15 01 02	No	23.76 plastic packaging	R12	M	Weighed	Offsite in Ireland	Greentech Plastics Ltd,WFP/LK/2013/164	unit 35 national technological park,Castletroy,Limerick,Ireland
To Other Countries	15 01 02	No	44.86 plastic packaging	R12	M	Weighed	Abroad	JFC Ltd,Broker - UK	Hardwick Road Astmoor Ind Est.,Rancorn,Cheshire,WA7 1PH,United Kingdom
Within the Country	15 01 02	No	440.559 plastic packaging	R12	M	Weighed	Offsite in Ireland	Leinster Environmental,Wp 2004/03	Dundalk,Co. Louth,Ireland
To Other Countries	15 01 02	No	188.12 plastic packaging	R12	M	Weighed	Abroad	Leinster Environmental,Broker - China	Dundalk,Co. Louth,Ireland
To Other Countries	15 01 02	No	520.14 plastic packaging	R12	M	Weighed	Abroad	Leinster Environmental,Broker - Netherlands	Dundalk,Co. Louth,Ireland
To Other Countries	15 01 02	No	23.92 plastic packaging	R12	M	Weighed	Abroad	Marwin Environmental Trading Ltd,Broker - France	7 Glyntown Heights,Glanmire,Co. Cork,Ireland
Within the Country	15 01 02	No	24.44 plastic packaging	R12	M	Weighed	Offsite in Ireland	Marwin Environmental Trading Ltd,Broker - Ireland	7 Glyntown Heights,Glanmire,Co. Cork,Ireland
Within the Country	15 01 02	No	15.84 plastic packaging	R12	M	Weighed	Offsite in Ireland	Materia Environment Ltd.,Broker - Ireland	Kipper House,Scilly,Kinsale,Co. Cork,Ireland
Within the Country	15 01 02	No	5.84 plastic packaging	R12	M	Weighed	Offsite in Ireland	Midland Waste,Broker - Ireland	Proudstown Road,Navan,Co. Meath,Ireland
Within the Country	15 01 02	No	20.36 plastic packaging	R12	M	Weighed	Offsite in Ireland	MIND QTLS Ltd.,WFP/WW/14/0033/01	Unit 7 Charvey Lane,Charvey Lane,Rathnew,Co. Wicklow,Ireland
To Other Countries	15 01 02	No	514.5 plastic packaging	R12	M	Weighed	Abroad	MLM Ltd,Broker - China	Adamson House,Towers Business Park,Wilmlov Rd Didsbury Manchester,M20 2YY,United Kingdom
To Other Countries	15 01 02	No	798.24 plastic packaging	R12	M	Weighed	Abroad	Monoworld Ltd,Broker - UK	Rushden Road,Sharnbrook,Bedfordshire,MK44IND,United Kingdom
Within the Country	15 01 02	No	3.66 plastic packaging	R12	M	Weighed	Offsite in Ireland	Irish Packaging Recycling - MRF,W0238-01	Merrywell Ind. Est.,Ballymount road,Tallaght,D.22,Ireland
Within the Country	15 01 02	No	16.68 plastic packaging	R12	M	Weighed	Offsite in Ireland	Nexgen Plastics Ltd,TBC	Market Square,Bagenalstown,Carlow,Ireland
Within the Country	15 01 02	No	4.44 plastic packaging	R12	M	Weighed	Offsite in Ireland	SDCC Bailing Station,0 3	Ballymount rd,walkinstown,dublin,d.12,Ireland

To Other Countries	1 01 02	No	1978.7 plastic packaging	R12	M	Weighed	Abroad	Peute Recycling BV,Broker - Netherlands	Baanhoekweg 4,3313 La Dordrecht,...,Netherlands
To Other Countries	15 01 02	No	93.8 plastic packaging	R12	M	Weighed	Abroad	Regen Waste Ltd,WCP/MH/09/0014-01	Down,BT356JQ,United Kingdom Unit 807 8/F Mackennycentre,660 Castel Peak road,Kowloon,...,Hong Kong
To Other Countries	15 01 02	No	1424.26 plastic packaging	R12	M	Weighed	Abroad	Vanden Global Ltd,Broker - China	Unit 807 8/F Mackennycentre,660 Castel Peak road,Kowloon,...,Hong Kong
To Other Countries	15 01 02	No	47.864 plastic packaging	R12	M	Weighed	Abroad	Vanden Global Ltd,Broker - Hong Kong	Unit 807 8/F Mackennycentre,660 Castel Peak road,Kowloon,...,Hong Kong
To Other Countries	15 01 02	No	117.87 plastic packaging	R12	M	Weighed	Abroad	Vanden Global Ltd,Broker - Netherlands	Unit 807 8/F Mackennycentre,660 Castel Peak road,Kowloon,...,Hong Kong
To Other Countries	15 01 02	No	32.52 plastic packaging	R12	M	Weighed	Abroad	Vanden Global Ltd,Broker - Taiwan	Unit 807 8/F Mackennycentre,660 Castel Peak road,Kowloon,...,Hong Kong
Within the Country	15 01 02	No	3.17 plastic packaging	R12	M	Weighed	Offsite in Ireland	Polymer Recovery ,WFP-WW-12-0030-01	88 Cherrywood Cresent,Clondalkin,Dublin 22,...,Ireland
To Other Countries	15 01 02	No	1111.58 plastic packaging	R12	M	Weighed	Abroad	WRC Recycling,Broker - UK AES,WCPNWCP0-08-10601-02	Auchans Farm,Johnstone,Renfrewshire,PA6 7EE,United Kingdom Cappincur,...,Tullamore,Co. Offaly,Ireland
Within the Country	15 01 03	No	6.82 wooden packaging	R12	M	Weighed	Offsite in Ireland	ROC Recycling Ltd,WFP-LS-11-0001-01	Ballymacken Ind Est,Ballymacken ,Portlaoise,Co. Laois,Ireland
Within the Country	15 01 03	No	12.78 wooden packaging	R12	M	Weighed	Offsite in Ireland	Leinster Environmental,Wp 2004/03	Dundalk,Co. Louth,...,Ireland Ballymount
Within the Country	15 01 03	No	1.4 wooden packaging	R12	M	Weighed	Offsite in Ireland	Panda Waste Services,W0039-02	Cross,Tallaght,Dublin 24,...,Ireland
Within the Country	15 01 03	No	1140.39 wooden packaging	R12	M	Weighed	Offsite in Ireland	TD Freight Ltd,Broker	Tullycara,Castleblaney,Co. Monaghan,...,Ireland Kiffa
Within the Country	15 01 04	No	94.08 metallic packaging	R12	M	Weighed	Offsite in Ireland	Wilton Waste Recycling Ltd.,WFP-CN-01-000-05-01	Crosserlough,Ballyjamesduff ,Cavan,...,Ireland Kiffa
To Other Countries	15 01 04	No	1.92 metallic packaging	R12	M	Weighed	Abroad	Wilton Waste Recycling Ltd.,Broker - UK	Crosserlough,Ballyjamesduff ,Cavan,...,Ireland



Within the Country	1 06	No	2.78 mixed packaging	R12	M	Weighed	Offsite in Ireland	ROC Recycling Ltd,WFP-LS-11-0001-01	Ballymacken Ind Est,Ballymacken ,Portlaoise,Co. Laois,Ireland 88 Cherrywood
To Other Countries	16 01 03	No	71.92 end-of-life tyres	R12	M	Weighed	Abroad	Agnail Ltd,Broker - India	Cresent,Clondalkin,Dublin 22,,Ireland 88 Cherrywood
To Other Countries	16 01 03	No	99.08 end-of-life tyres	R12	M	Weighed	Abroad	Agnail Ltd,Broker - South Korea	Cresent,Clondalkin,Dublin 22,,Ireland Cappincur,,Tullamore,Co. Offaly,Ireland
To Other Countries	20 01 01	No	2108.42 paper and cardboard	R12	M	Weighed	Abroad	AES,Broker - Belgium	Cappincur,,Tullamore,Co. Offaly,Ireland
To Other Countries	20 01 01	No	99.76 paper and cardboard	R12	M	Weighed	Abroad	AES,Broker - Netherlands	Cappincur,,Tullamore,Co. Offaly,Ireland
To Other Countries	20 01 01	No	309.74 paper and cardboard	R12	M	Weighed	Abroad	AES,Broker - UK	Cappincur,,Tullamore,Co. Offaly,Ireland 47 Swaffham Road,Burwell,Cambridgeshire, CB25 OAN,United Kingdom
To Other Countries	20 01 01	No	668.26 paper and cardboard	R12	M	Weighed	Abroad	Boost Recycling Ltd,Broker - Netherlands	CP Paper 13 Roebuck Road,Rochester,Kent,ME1 1UE,United Kingdom
To Other Countries	20 01 01	No	176.24 paper and cardboard	R12	M	Weighed	Abroad	Consultancy,Broker - Germany	11 Triangle South,Clifton,Bristol,UKBS8 1EY,United Kingdom
To Other Countries	20 01 01	No	50.26 paper and cardboard	R12	M	Weighed	Abroad	Failand Paper Services Ltd.,Broker - UK	41 Inn Road,Dollingstown,Craigavon,BT667JN,United Kingdom
To Other Countries	20 01 01	No	494.2 paper and cardboard	R12	M	Weighed	Abroad	Huhtamaki Lurgan Ltd,Broker - UK	41 Inn Road,Dollingstown,Craigavon,BT667JN,United Kingdom
To Other Countries	20 01 01	No	194.12 paper and cardboard	R12	M	Weighed	Abroad	Huhtamaki Lurgan Ltd,Broker - Netherlands	Northfleet Mill Crate Hall road ,Gravesend,Kent,DA119AD,United Kingdom
To Other Countries	20 01 01	No	50.8 paper and cardboard	R12	M	Weighed	Abroad	Kimberly Clark Ltd,Mill - UK	Shamrock Place,North Strand,Dublin 1,,Ireland
Within the Country	20 01 01	No	62.89 paper and cardboard	R12	M	Weighed	Offsite in Ireland	Leech Papers,WFP-DC-10-0017-01	7 Glyntown Heights,Glanmire,Co. Cork,,Ireland
To Other Countries	20 01 01	No	49.66 paper and cardboard	R12	M	Weighed	Abroad	Marwin Environmental Trading Ltd,Broker - India	Adamson House,Towers Business Park,Wilmlov Rd Didsbury Manchester,M20 2YY,United Kingdom
To Other Countries	20 01 01	No	497.66 paper and cardboard	R12	M	Weighed	Abroad	MLM Ltd,Broker - China	

To Other Countries	20 01 01	No	6635.26 paper and cardboard	R12	M	Weighed	Abroad	Northwood Recycling Limited, Broker - UK	Grant House, Stafford Park 12, Telford, TF33BJ, United Kingdom
To Other Countries	20 01 01	No	155.48 paper and cardboard	R12	M	Weighed	Abroad	Palm Recycling Ltd, Broker - UK	Saddlebow Paper Mill, Poplar Avenue Kings Lynn, Norfolk, PE34 3AL, United Kingdom
To Other Countries	20 01 01	No	28.52 paper and cardboard	R12	M	Weighed	Abroad	Paperman Products, WMX19/41	Rathdown Cl Lissue Ind Est, Moira Road, Lisburn Co Antrim, BT28 2RB, United Kingdom
To Other Countries	20 01 01	No	1167.74 paper and cardboard	R12	M	Weighed	Abroad	Peute Recycling BV, Broker - Netherlands	Baanhoekweg 4, 3313 La Dordrecht, Netherlands
To Other Countries	20 01 01	No	1678.26 paper and cardboard	R12	M	Weighed	Abroad	Saica Natur, Broker - Spain	York Street Mill, Audenshaw, Manchester M345TN, United Kingdom
To Other Countries	20 01 01	No	296.74 paper and cardboard	R12	M	Weighed	Abroad	Sca.Emd Recycling, Broker - Belgium	543 Hythe Lane, Larkfield Aylesford, Kent, M320 7PE, United Kingdom
To Other Countries	20 01 01	No	9882.8 paper and cardboard	R12	M	Weighed	Abroad	Sca.Emd Recycling, Broker - Indonesia	543 Hythe Lane, Larkfield Aylesford, Kent, M320 7PE, United Kingdom
To Other Countries	20 01 01	No	786.92 paper and cardboard	R12	M	Weighed	Abroad	Shred it, Broker - UK	Unit 1 A Kileen Industrial Park, Kileen Road, Dublin 10, Ireland
To Other Countries	20 01 01	No	957.68 paper and cardboard	R12	M	Weighed	Abroad	Smurfit Recycling, Broker - India	Ballymount road, Walkinstown, Dublin, Ireland
To Other Countries	20 01 01	No	279.7 paper and cardboard	R12	M	Weighed	Abroad	Vipa Luasanna S.A, Broker - India	Gaeries Benjamin Constan 1, Case Postable 7700 1002, Lausanne, Switzerland
To Other Countries	20 01 01	No	856.6 paper and cardboard	R12	M	Weighed	Abroad	Vipa Luasanna S.A, Broker - Indonesia	Gaeries Benjamin Constan 1, Case Postable 7700 1002, Lausanne, Switzerland
To Other Countries	20 01 01	No	771.82 paper and cardboard	R12	M	Weighed	Abroad	Vipa Luasanna S.A, Broker - Malaysia	Gaeries Benjamin Constan 1, Case Postable 7700 1002, Lausanne, Switzerland
Within the Country	20 01 36	No	discarded electrical and electronic equipment other than those mentioned in 20 01 21, 20 01 23 and 20 01 35	R12	M	Weighed	Offsite in Ireland	KMK Metals Recycling Ltd, WCP-OY-0607-01	Cappincur Ind Est., Daingean Rd., Tullamore, Co. Offaly, Ireland
Within the Country	20 01 38	No	12.56 wood other than that mentioned in 20 01 37	R12	M	Weighed	Offsite in Ireland	Panda Waste Services, W0039-02	Ballymount Cross, Tallaght, Dublin 24, Ireland
Within the Country	20 01 39	No	4.16 plastics	R12	M	Weighed	Offsite in Ireland	ROC Recycling Ltd, WFP-LS-11-0001-01	Ballymacken Ind Est, Ballymacken, Portlaoise, Co. Laois, Ireland

To Other Countries	20 01 39	No	70.93 plastics	R12	M	Weighed	Abroad	Agnail Ltd,Broker - UK	88 Cherrywood Cresent,Clondalkin,Dublin
Within the Country	20 01 39	No	0.18 plastics	R12	M	Weighed	Offsite in Ireland	Cash A/c,tbc	22,,Ireland ,,,,,,Ireland
To Other Countries	20 01 39	No	2.12 plastics	R12	M	Weighed	Abroad	GFSL Ltd,Broker - UK	96 Toft Hill Bishop Auckland Durham DL14 OJA United Kingdom,Bishop Aukland,Durham,DL14OJAU nited Kingdom,Ireland
Within the Country	20 01 39	No	7.5 plastics	R12	M	Weighed	Offsite in Ireland	MIND QTLS Ltd.,WFP/WW/14/0033/01	Unit 7 Charvey Lane,Charvey Lane,Rathnew,Co. Wicklow,Ireland Unit 807 8/F Mackennycentre,660 Castel Peak road,Kowloon,,Hong Kong
To Other Countries	20 01 39	No	10.27 plastics	R12	M	Weighed	Abroad	Vanden Global Ltd,Broker - Turkey	Peak road,Kowloon,,Hong Kong
Within the Country	20 03 01	No	81.22 mixed municipal waste	R12	M	Weighed	Offsite in Ireland	Greyhound - "OWN MATERIAL",W0205-01	Crag Avenue,Clondalkin,Dublin 22,,Ireland
Within the Country	20 03 01	No	5.42 mixed municipal waste	R12	M	Weighed	Offsite in Ireland	Midland Waste,W131-02	Proudstown Road,Navan,Co. Meath,,Ireland
Within the Country	20 03 01	No	65.28 mixed municipal waste	R12	M	Weighed	Offsite in Ireland	SDCC Bailing Station,0 3	Ballymount rd,walkinstown,dublin,d.12,Ir eland
Within the Country	20 03 01	No	131.22 mixed municipal waste	R12	M	Weighed	Offsite in Ireland	Panda Waste Services,W0140-03	Beauparc Business Park,Navan,,Co. Meath,Ireland
Within the Country	20 03 01	No	1071.74 mixed municipal waste	R12	M	Weighed	Offsite in Ireland	Panda Waste Services,W0039-02	Ballymount Cross,Tallaght,Dublin 24,,Ireland