



*Site: Merrywell Industrial Estate,
Ballymount Road Lower,
Ballymount, Dublin 22.*

Waste Licence Number W0238-01

Annual Environmental Report

01st January 2014 – 31st December 2014

Table of Contents

Table of Contents	2
1.1 Company Details	4
1.2 Management Structure	5
1.3 Financial Provision	5
1.4 Environmental Policy	5
1.5 Activities	6
1.6 Water Usage	7
2.1 Waste Received	7
2.2 Waste Transferred Off-Site for Disposal or Recovery	7
2.3 waste recovery reports	8
2.4 Summary report on emissions and interpretation of environmental monitoring	8
2.4.1 Storm Water Emissions	8
2.4.2 Noise Emissions	9
2.4.3 Tank and Pipeline Testing and Inspection Report	11
2.4.4 Summary of Resource and Energy Consumption	11
2.4.5 Water	11
2.5 Site Infrastructure	11
2.5.1 In – place	11
2.6 Progress report on proposals developed to minimise water demand	13
2.7 PRTR Emission	13
3.1 Summary of Reported Incidents and Complaints	18
3.1.1 Reported Incidents Summary	18
3.1.2 Complaints	18
3.2 Review of Nuisance Controls	18
3.2.1 Odour	18
3.2.2 Noise	18
3.2.3 Vermin	19

3.2.4 Flies	19
3.2.5 Birds	19
3.2.6 Litter	19
4.0 Development of Procedures on Site	19
5.0 Pollution Emission Register	20
6.0 Report on Programme for Public Information	20
Appendix A	21
Appendix B	22
Appendix C	23
Appendix D	24

1.0 Introduction

Irish Packaging Recycling operate Waste Licence W0238-01 on behalf of Dublin City Council.

The following Annual Environmental Report was prepared in accordance with Condition 11.8 and Schedule E of Waste Licence W0238-01, and with reference to Environmental Protection Agency guidance on Annual Environmental Reporting. This AER relates to the calendar year 2014. The report provides details of the activities carried out at the facility from the 01st of January 2014 to the 31st December 2014.

1.1 Company Details

Licence No: W0238-01

Name: Irish Packaging Recycling Ltd.

Address: Ballymount Road,
Walkinstown,
Dublin 12.

Telephone Number: 01 4602011

Fax Number: 01 4602210

Website: www.panda.ie

1.2 Management Structure

There are 80 employees either working directly or indirectly at the facility. Appendix B illustrates the organisational structure of the facility.

1.3 Financial Provision

A statement from our accountants is provided in Appendix C. At the present time the annual turnover and company assets are sufficient to offset environmental liabilities incurred during the course of operations and in the event that the company is closed.

1.4 Environmental Policy

In carrying out our function, IPR/Panda acknowledge that our activities impact upon the environment both through routine internal operations and the actions of our staff.

It is Panda's policy to protect the environment during all activities, both on and off-site.

This is achieved by:

- Strategic preparation and implementation of operating procedures (including an emergency response procedure).
- Utilizing BAT (Best Available Technology).
- Actively promoting environmental awareness amongst staff and clients through appropriate training and communication programs.
- Reduce energy use through effective education and awareness and the installation of energy efficient technology where appropriate.
- Implementing a policy of continuous improvement, by means of targeted objectives. All objectives and targets are monitored and up-dated accordingly.

IPR/Panda are committed to complying with all relevant environmental regulations and aim to supply a safe competitive and sustainable service with specific regards to the surrounding environment.

1.5 Activities

Irish Packaging Recycling Ltd commenced operation of the Regional Materials Recovery Facility on behalf of the four Dublin Local Authorities under Waste Licence W0238-01 in January 2012. This licence allows Irish Packaging Recycling Ltd. to carry out the following waste handling activities as permitted under the Third and Fourth Schedules of the Waste Management Act 1996 to 2003:

- Class 12 and 13 Waste Disposal Activities, in accordance with the Third Schedule of the Waste Management Act, 1996.

Third Schedule, Class 12: Repackaging prior to submission to any activity referred to in a preceding paragraph of this Schedule.

Third Schedule, Class 13: Storage prior to submission referred to in a preceding paragraph of this Schedule, other than temporary storage, pending collection, on the premises where the waste concerned is produced.

- Class 2, 3, 4 and 13 Waste Recovery Activities, in accordance with the Fourth Schedule of the Waste Management Act, 1996.

Forth Schedule, Class 2: Recycling or reclamation of organic substances which are not used as solvents (including composting and other biological transformation processes). Principle activity.

Forth Schedule, Class 3: Recycling or reclamation of metal and metal compounds.

Forth Schedule, Class 4: Recycling or reclamation of other inorganic materials

Forth Schedule, Class 13: Storage of waste intended for submission to any activity referred to in a preceding paragraph of this Schedule, other than temporary storage, pending collection, on the premises where the waste concerned is produced.

Irish Packaging Recycling Ltd accepts household dry recyclable materials that have been collected in a single co-mingled waste stream from kerbside collections to the Regional Materials

Recovery Facility. The materials accepted include paper, newspapers, magazines, cardboard, aluminium cans, steel cans, tetrapak beverage cartons, plastic bottles including PET, HDPE, PVC containers and plastic film. All materials collected and processed at the Regional MRF come from the Dublin Region.

Irish Packaging Recycling Ltd also accepts small quantities of commercial dry recyclable materials to the Regional Materials Recovery Facility. The materials accepted include paper, cardboard, aluminium and steel cans, and mixed plastics.

1.6 Water Usage

Water for fire sprinkler system is taken from a holding tank located on the facility. Water to office and amenities is taken from a municipal supply and is metered by the council.

2.0 Summary Information

2.1 Waste Received

The waste received at the facility from the 01st January 2014 to the 31st December 2014 was 95,140.79 tonnes.

TABLE 1: Waste received in 2014

EWC code	Waste Description	Tonnage
20 03 01	Mixed Dry Recyclables	93,484.438
15 01 01	Paper & Cardboard	1,391.82
15 01 02	Plastic Packaging	37.84
15 01 04	Metal Packaging	226.7

2.2 Waste Transferred Off-Site for Disposal or Recovery

See Appendix D for the breakdown of the different destinations used for the waste removed off site by EWC code.

2.3 waste recovery reports

TABLE 2: Outgoing destination and recovery rate.

Destination	Tonnage	%
Disposal	0	0
Recovery	92,752.99	100

2.4 Summary report on emissions and interpretation of environmental monitoring

Under condition 6 and Schedule C of the licence W0238-01, IPR are required to monitor storm water emissions and noise. The following sub-headings detail the results from independent laboratories of the different parameters and the emission limit values ELV's set by the EPA and any complaints and incident that may have occurred during the year.

2.4.1 Storm Water Emissions

TABLE 3: Quarterly Samples.

Quarter 1:

Test Parameter	SOP	Analytical Technique	Result	Units
COD (surface water)	107	Colorimetry	<5	mg/L
pH (surface water)	110	Electrometry	7.5	pH Units
Solids (total suspended)	106	Filtration / Drying @ 104C	2	mg/L

Quarter 2:

Test Parameter	SOP	Analytical Technique	Result	Units
COD (surface water)	107	Colorimetry	15	mg/L
pH (surface water)	110	Electrometry	7.4	pH Units
Solids (total suspended)	106	Filtration / Drying @ 104C	3	mg/L

Quarter 3:

Test Parameter	SOP	Analytical Technique	Result	Units
COD (Surface Water.)	107	Colorimetry	11	mg/L
pH (Surface Water.)	110	Electrometry	7.6	pH Units
Solids (Total Suspended)	106	Filtration / Drying @ 104C	2	mg/L

Quarter 4:

Test Parameter	SOP	Analytical Technique	Result	Units
COD (surface water)	107	Colorimetry	20	mg/L
pH (surface water)	110	Electrometry	7.2	pH Units
Solids (total suspended)	106	Gravimetry	9	mg/L

2.4.2 Noise Emissions

Noise emissions are monitored according to Schedule B.4 and Condition 6.15 of the licence. An independent competent consultant was commissioned to conduct the noise sampling for the facility. Table 4 details results of noise monitoring conducted in 2014.

TABLE 4: Noise Emissions 2014

Recorded day-time noise levels dB(A) -30 minute intervals

Location id (Time)	Leq	L10	L90	Comments
N1 (15.26-16.26)	56.7	60.9	52.6	Site noise in region of 52.6dBA
N2 (15.32-16.32)	58.7	60.2	55.8	Road traffic noise dominant with site noise below Lmin of 54.2dBA
N3 (16.38-17.38)	58.0	59.6	55.7	Road traffic noise dominant with site noise below Lmin of 53.9dBA
N4 (16.41-17.41)	57.9	60.1	57.4	Road traffic noise dominant with site noise below Lmin of 56.0dBA
N5 (13.51-14.51) NSL1	52.5	48.6	45.8	Road traffic noise with waste facility in-audible at less than 45.8dBA

Recorded night-time noise levels dB(A) -30 minute intervals

Location id	Leq	L10	L90	Comments
N1 (22.41)	51.7	49.3	48.1	Road traffic noise with waste facility in-audible at less than Lmin of 46.6dBA
N2 (22.46)	50.4	51.4	48.2	Road traffic noise with waste facility in-audible at less than Lmin of 46.9dBA
N3 (23.12)	51.8	52.8	48.4	Road traffic noise with waste facility in-audible at less than Lmin of 46.8dBA
N4 (23.33)	53.9	67.2	46.6	Road traffic noise with waste facility in-audible at less than Lmin of 43.9dBA
N5 (22.04) NSL1	50.0	56.5	46.9	Road traffic noise dominant with waste facility in-audible at Lmin of than 45.3dBA

2.4.3 Tank and Pipeline Testing and Inspection Report.

AQS environmental solutions carried out pipeline integrity testing in September 2014.

Rowan Engineering carried out bund integrity testing in July 2013.

2.4.4 Summary of Resource and Energy Consumption

Table 5: Summary of Resource and Energy Consumption from 01st January 2014 to December 2014.

Raw Material/Resource	Application	Consumption
Electricity	Office and plant use	2477.54 MWhr
Marked Diesel	Mobile plant machinery	86999.52 Litres

2.4.5 Water

Water for fire sprinkler system is taken from a holding tank located on the facility. Water to office and amenities is taken from a municipal supply and is metered by the council.

2.5 Site Infrastructure

2.5.1 In – place

The current site infrastructure is outlined below (List 1). List 2 details the waste processing equipment used on site.

List 1: Current site infrastructure

1. Offices
2. Dual Weighbridge.
3. One x Waste processing building
4. One sprinkling system

5. Canteen & toilets.
6. Maintenance Workshop
7. Fencing around the site
8. ESB sub station

List 2: Waste processing equipment

- 1 x Shovel
- 3 x Forklifts
- 1 x Roadsweeper
- 1 x Teleporter
- 1 x Hook Loader
- 2 x OCC Screens
- 6 x Nerwscreens
- 1 x Eddy Current
- 2 x Multi Wave
- 1 x Fibre sort
- 1 x Perforator
- 2 x Magnets
- 3 x Aladdin
- 4 x Walking Floor Bunkers
- 1 x Single Ram Baler
- 1 x Twin Ram Baler
- 2 x Manual Balers

There is sufficient back up within the group if the shovel, forklifts, hook loader or the teleporter break down.

2.6 Progress report on proposals developed to minimise water demand

Water usage is minimised on site due to the nature of the materials handled. Therefore there is no requirement to reduce water usage.

2.7 PRTR Emission.

IPR's PRTR emission return is provided in Appendix D.

3.0 ENVIRONMENTAL OBJECTIVES AND TARGETS.

REVIEW OF ENVIRONMENTAL OBJECTIVES AND TARGETS 2014

No	Aspects	Objective & Target	Method of achievement	Responsibility	Due
1	Waste Management	Ensure the most efficient and environmentally sustainable management of material entering the MRF	Promote Recycling in-house within the MRF site offices	EHS Manager /Facility Manager	On-going
2	Compliance with the facility Waste Licence	Operate the facility in accordance with the Conditions of the Waste Licence and promote continual environmental improvement	Review training schedule of each staff member and identify training needs including SOP's.	EHS Manager	On-going
			Continue programme of regular inspections to include storm water sampling.	EHS Manager	On-going
			Continue to maintain the appropriate records at the facility in accordance with Condition 11 of the facility Waste Licence	EHS Manager	On-going
3	Water/Oil	Prevent surface water contamination	Ensure that all gullies are maintained and regularly cleaned.	EHS Manager	On-going
			Pipe and Bund integrity testing to be carried out.	EHS Manager	Complete

4	Resource use and energy efficiency.	Upgrade lighting throughout facility in order to create greater energy efficiency facility.	Installation of energy efficient lighting throughout facility to be conducted by contractor.	Facility Manager.	Complete
5	Material Quality	Ensure that all containers leaving the site have been loaded accordingly and that the material therein conforms to specified quality standards.	Retrain all relevant staff on the importance of picking material correctly.	Facility Manager	Complete
			Clean all light bulbs and covers in so there is sufficient lighting for personnel to assess incoming waste.	EHS Manager	Complete
6	Traffic Management	Achieve organised, efficient and safe movement of cars, trucks and machinery on site minimising noise and emissions.	Reapply site road markings.	EHS Manager /Facility Manager.	Put Back 2015
7	Public Relations	Minimisation of Complaints.	Effectively deal with complaints	EHS Manager	On-going
			Maintain a high standard of housekeeping practises at the facility to minimise the number of complaints.	EHS Manager	On-going
8	Public Awareness	To educate the public in the importance of recycling and the environment.	Presentations will be provided in the facility for all types of groups. The presentation will set out to educate people about the work carried out on site and the importance of recycling for the environment.	EHS Manager	On-going
9	Fire Detection	To reduce the risk from fire within the facility.	New “Air Sampling & Flame Detection” system to be installed throughout whole facility.	Plant / EHS Managers	Complete

Environmental Objectives and Targets for 2015

No.	Aspects	Objective & Target	Method of Achievement	Responsibility of	Status
1	Waste Management	Ensure the most efficient and environmentally sustainable management of material entering the MRF	Promote Recycling in-house within the MRF site offices	EHS Manager /Facility Manager	On-going
			Carry out waste characterisation surveys monthly – to include quarterly residual waste characterisation survey	EHS Manager	On-going
2	Compliance with the facility Waste Licence	Operate the facility in accordance with the Conditions of the Waste Licence and promote continual environmental improvement	Review training schedule of each staff member and identify training needs.	EHS Manager	On going
			Continue programme of regular inspections to include storm water sampling.	EHS Manager	On-going
			Continue to maintain the appropriate records at the facility in accordance with Condition 11 of the facility Waste Licence	EHS Manager	On-going
3	Water/Oil	Prevent surface water contamination	Ensure all gullies are fitted with wire mesh.	EHS Manager	June
			Repair drainage pipeline	EHS Manager	July
			Ensure all gullies are maintained and regularly cleaned	EHS Manager	On-going
			Sweeper attachment for forklift to be purchased and situated on site permanently.	EHS Manager /Facility Manager	February
			New spill Kit boxes to be installed at workshop and diesel bund.	EHS Manager	March

4	Traffic Management	Achieve organised, efficient and safe movement of cars, trucks and machinery on site minimising noise and emissions	Repaint road markings & Review site traffic management plan.	H&S Manger	September
5	Resource Use and Energy Efficiency	Identify opportunities for energy use reduction and efficiency.	Identify where energy savings can be made.	EHS Manager	On-going
			Installation of non-concussive push button taps so as to reduce wastage.	EHS Manager /Facility Manager	March
6	Public Relations	Minimisation of Complaints	Effectively deal with complaints	EHS Manager	On-going
			Maintain a high standard of housekeeping practises at the facility to minimise the number of complaints.	EHS Manager	On-going
7	Emergencies	To control any emergency that may arise in the facility.	Review emergency response procedure and train all personnel.	EHS Manager	June
8	Litter	Prevent litter	Facility has at all times got staff monitoring litter on site.	Facility Manager	On-Going
			Sweeper attachment for forklift to be purchased and situated on site permanently.	Facility Manager	February

3.1 Summary of Reported Incidents and Complaints

3.1.1 Reported Incidents Summary

There were no incidents during the reporting period 01st January to 31st December 2014.

3.1.2 Complaints

There were no complaints during the reporting period 01st January to 31st December 2014.

3.2 Review of Nuisance Controls

3.2.1 Odour

There is minimal risk of odour nuisance due to the nature of the waste accepted at the facility. However, IPR now has a permanent sweeper on site that cleans the concreted yard routinely throughout the day. Material is turned over in a timely fashion.

3.2.2 Noise

The monitoring results showed that noise is not a nuisance.

3.2.3 Vermin

A file on vermin control is maintained in the office. A sub-contractor is used to control any vermin on site.

3.2.4 Flies

Good housekeeping practices are used to prevent fly infestations. Fly Spraying is conducted inside the facility during the summer months on a weekly / bi-weekly basis by a sub-contractor.

3.2.5 Birds

In order to avoid having birds as a nuisance, litter control is practised at all times, this includes regular litter patrols. Birds are not attracted, due to the nature of the material handled on site.

3.2.6 Litter

A designated member of staff carries out litter inspections of the facility regularly and gathers any litter deposited. The yard is kept clean using a road sweeper

4.0 Development of Procedures on Site

The Environmental Management System has been developed and includes the following Standard Operating Procedure;

- Corrective Action;
- Daily Site Inspections;
- Nuisance Management;
- Emergency Response;
- Unacceptable Waste;
- Communications Programme;
- Storage of Fuels and Oils;
- Training and Awareness;
- Environmental Complaints;

A Daily Site Inspection Sheet has been developed to record any potential nuisance on or points to note.

5.0 Pollution Emission Register

After consulting the PERL list IPR MRF are not using any substance that is listed at present.

6.0 Report on Programme for Public Information

IPR have a shared website with their sister company Panda. The website was recently re-developed; one of the features is an Environmental page where the following can be downloaded,

- Facility licences (W0140-03, W0261-01, W0263-01, W0039-02, **W0238-01**)
- Multi-regional Waste collection permit (WCP-DC-09-1188-01),
- Environmental Policy,

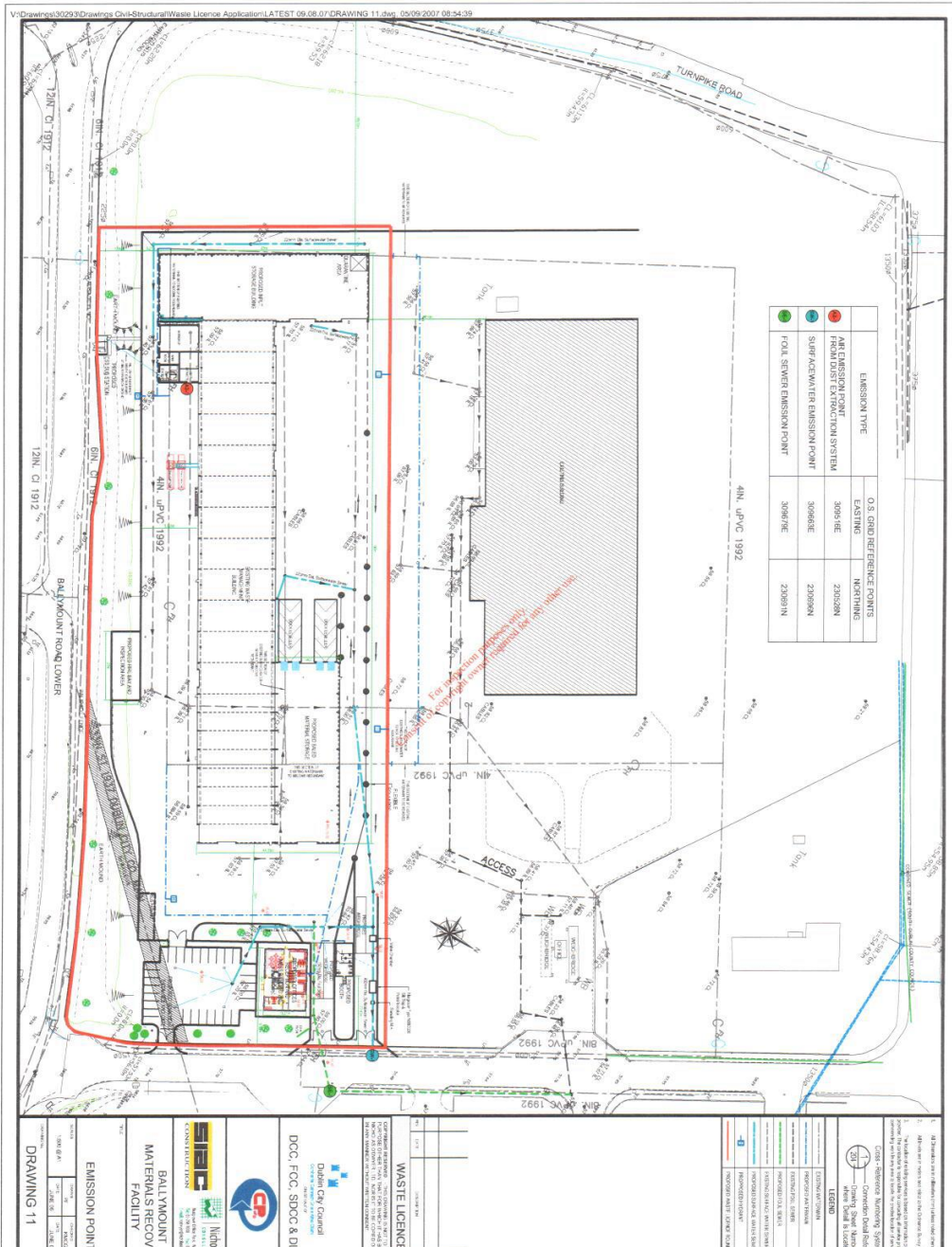
Recycling certificates are issued to customers, on request, so that they can determine their recycling on a monthly basis.

During the reporting period there were no requests from members of the public to inspect any Environmental Records.

The information in the Annual Environmental Report is true and accurate representation of the activities conducted by IPR in 2014.

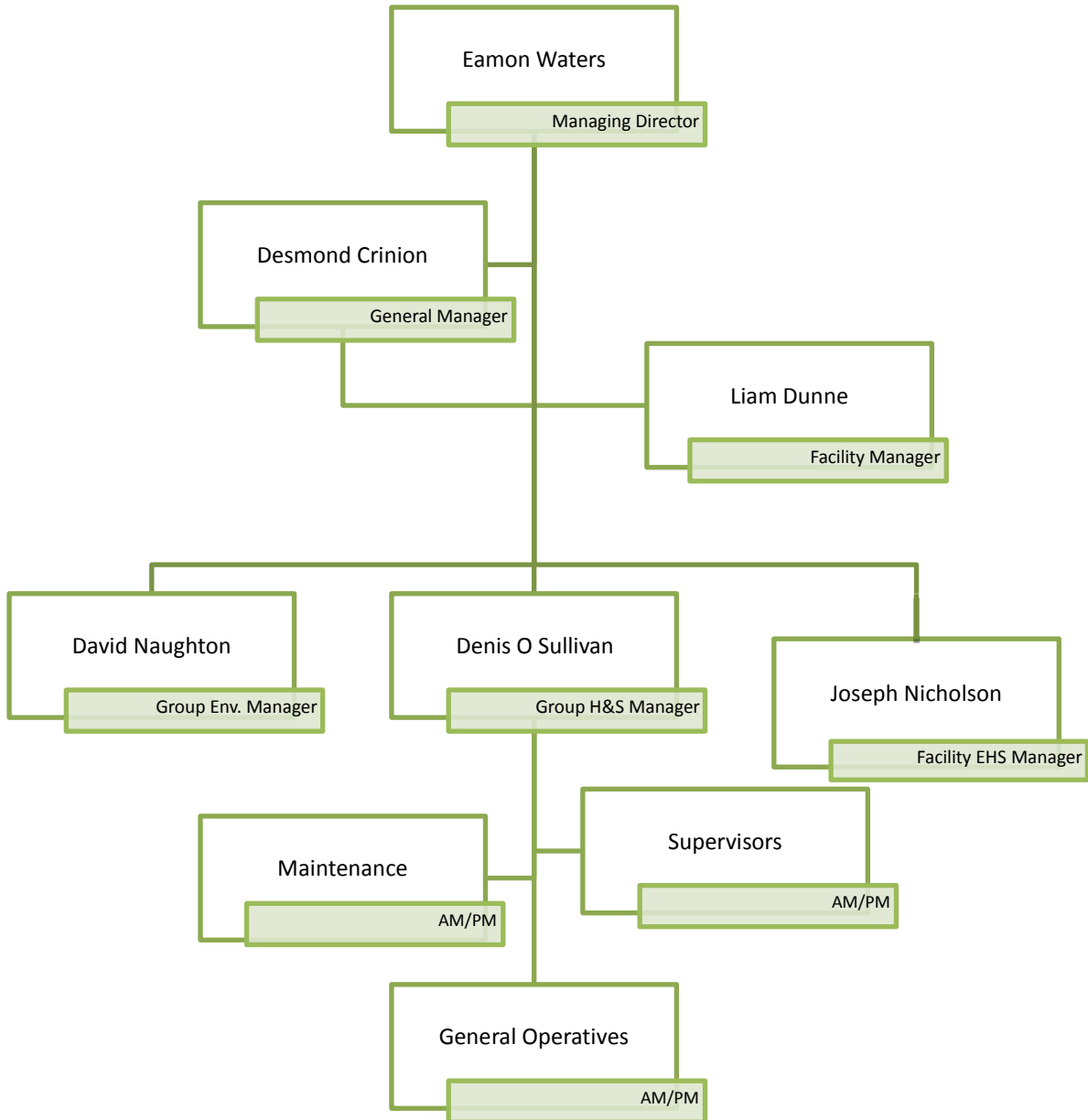
Appendix A

Site Layout



Appendix B

Organisational Structure



Appendix C

Financial Statement



Fagan Lynch Donnellan
Chartered Accountants & Registered Auditors

Our Ref: VL/NMcK

18th March 2015

Environmental Protection Agency,
McCumiskey House,
Richview,
Clonskeagh Road,
Dublin 14.

Re: Irish Packaging Recycling

Dear Sir,

We act as Auditors and Taxation Agents for the above and have acted in this capacity for the past 8 years.

We wish to confirm as follows:

1. Statutory Accounts have been filed for all years up to 31.12.2013 with the Companies Office.

Accounts and Tax Returns have also been filed with Inspector of Taxes for all years to 31st December 2013.

2. The Company trades profitably and is on a very sound financial footing.

If you have any queries, please do not hesitate to contact us.

Yours faithfully,


FAGAN LYNCH DONNELLAN

Newbridge House, Athlumney, Navan, Co. Meath
Tel: (046) 9033700 Fax: (046) 9029341 e-mail: info@fld.ie www.fld.ie

John Fagan FCA Vincent Lynch FCA Mark McCartney FCCA

Registered to carry on audit work and authorised to carry on investment business by the Institute of Chartered Accountants in Ireland (ICAI).
Chartered Accountants Ireland is the operating name of ICAI.



Appendix D

PRTR Emissions

AER Returns Workbook

REFERENCE YEAR	2014
-----------------------	------

1. FACILITY IDENTIFICATION

Parent Company Name	Dublin City Council
Facility Name	Ballymount MRF (Merrywell)
PRTR Identification Number	W0238
Licence Number	W0238-01

Classes of Activity

No.	class_name
-	Refer to PRTR class activities below

Address 1	Merrywell Industrial Estate
Address 2	Ballymount Road Lower
Address 3	Ballymount
Address 4	Dublin 12
	Dublin
Country	Ireland
Coordinates of Location	-6.35671 53.3145
River Basin District	IEEA
NACE Code	3832
Main Economic Activity	Recovery of sorted materials
AER Returns Contact Name	Joe Nicholson
AER Returns Contact Email Address	joe.nicholson@ipr.ie
AER Returns Contact Position	ehs officer
AER Returns Contact Telephone Number	086 022 6109
AER Returns Contact Mobile Phone Number	086 022 6109
AER Returns Contact Fax Number	
Production Volume	0.0
Production Volume Units	
Number of Installations	0
Number of Operating Hours in Year	0
Number of Employees	80
User Feedback/Comments	
Web Address	www.panda.ie

2. PRTR CLASS ACTIVITIES

Activity Number	Activity Name
50.1	General
5(c)	Installations for the disposal of non-hazardous waste
50.1	General

3. SOLVENTS REGULATIONS (S.I. No. 543 of 2002)

Is it applicable?	
Have you been granted an exemption ?	
If applicable which activity class applies (as per Schedule 2 of the regulations) ?	
Is the reduction scheme compliance route being used ?	

4. WASTE IMPORTED/ACCEPTED ONTO SITE

[Guidance on waste imported/accepted onto site](#)

Do you import/accept waste onto your site for on-site treatment (either recovery or disposal activities) ?	
--	--

This question is only applicable if you are an IPPC or Quarry site



Annual Environmental Report

Author: Joseph Nicholson

4.1 RELEASES TO AIR

[Link to previous years emissions data](#)

| PRTR# : W0238 | Facility Name : Ballymount MRF (Merrywell) | Filename : AER_PRTR W0238_2014.xls | Return Year : 2014 |

26/03/2015 10:10

SECTION A : SECTOR SPECIFIC PRTR POLLUTANTS

RELEASES TO AIR					Please enter all quantities in this section in KGs			
POLLUTANT		METHOD			ADD EMISSION POINT	QUANTITY		
No. Annex II	Name	M/C/E	Method Code	Designation or Description	Emission Point 1	T (Total) KG/Year	A (Accidental) KG/Year	F (Fugitive) KG/Year
					0.0	0.0	0.0	0.0

ADD NEW ROW | DELETE ROW * | * Select a row by double-clicking on the Pollutant Name (Column B) then click the delete button

SECTION B : REMAINING PRTR POLLUTANTS

RELEASES TO AIR					Please enter all quantities in this section in KGs			
POLLUTANT		METHOD			ADD EMISSION POINT	QUANTITY		
No. Annex II	Name	M/C/E	Method Code	Designation or Description	Emission Point 1	T (Total) KG/Year	A (Accidental) KG/Year	F (Fugitive) KG/Year
					0.0	0.0	0.0	0.0

ADD NEW ROW | DELETE ROW * | * Select a row by double-clicking on the Pollutant Name (Column B) then click the delete button

SECTION C : REMAINING POLLUTANT EMISSIONS (As required in your Licence)

RELEASES TO AIR					Please enter all quantities in this section in KGs			
POLLUTANT		METHOD			ADD EMISSION POINT	QUANTITY		
Pollutant No.	Name	M/C/E	Method Code	Designation or Description	Emission Point 1	T (Total) KG/Year	A (Accidental) KG/Year	F (Fugitive) KG/Year
					0.0	0.0	0.0	0.0

ADD NEW ROW | DELETE ROW * | * Select a row by double-clicking on the Pollutant Name (Column B) then click the delete button

Additional Data Requested from Landfill operators

For the purposes of the National Inventory on Greenhouse Gases, landfill operators are requested to provide summary data on landfill gas (Methane) flared or utilised on their facilities to accompany the figures for total methane generated. Operators should only report their Net methane (CH4) emission to the environment under T(total) KG/yr for Section A: Sector specific PRTR pollutants above. Please complete the table below:

Landfill:

Ballymount MRF (Merrywell)

Please enter summary data on the quantities of methane flared and / or utilised

	T (Total) kg/Year	M/C/E	Method Used		Facility Total Capacity m3 per hour
			Method Code	Designation or Description	
Total estimated methane generation (as per site model)	0.0				N/A
Methane flared	0.0				0.0 (Total Flaring Capacity)
Methane utilised in engine/s	0.0				0.0 (Total Utilising Capacity)
Net methane emission (as reported in Section A above)	0.0				N/A



4.2 RELEASES TO WATERS

[Link to previous years emissions data](#)

| PRTR#: W0238 | Facility Name : Ballymount MRF (Merrywell) | Filename : AER PRTR W0238 2014.xls | Return Year : 2014 |

26/03/2015 10:10

SECTION A : SECTOR SPECIFIC PRTR POLLUTANTS

Data on ambient monitoring of storm/surface water or groundwater, conducted as part of your licence requirements, should NOT be submitted under AER / PRTR Reporting a

RELEASES TO WATERS					Please enter all quantities in this section in KGs			
POLLUTANT					ADD EMISSION POINT	QUANTITY		
No. Annex II	Name	M/C/E	Method Used		Emission Point 1	T (Total) KG/Year	A (Accidental) KG/Year	F (Fugitive) KG/Year
			Method Code	Designation or Description				
					0.0	0.0	0.0	0.0

ADD NEW ROW DELETE ROW * * Select a row by double-clicking on the Pollutant Name (Column B) then click the delete button

SECTION B : REMAINING PRTR POLLUTANTS

RELEASES TO WATERS					Please enter all quantities in this section in KGs			
POLLUTANT					ADD EMISSION POINT	QUANTITY		
No. Annex II	Name	M/C/E	Method Used		Emission Point 1	T (Total) KG/Year	A (Accidental) KG/Year	F (Fugitive) KG/Year
			Method Code	Designation or Description				
					0.0	0.0	0.0	0.0

ADD NEW ROW DELETE ROW * * Select a row by double-clicking on the Pollutant Name (Column B) then click the delete button

SECTION C : REMAINING POLLUTANT EMISSIONS (as required in your Licence)

RELEASES TO WATERS					Please enter all quantities in this section in KGs			
POLLUTANT					ADD EMISSION POINT	QUANTITY		
Pollutant No.	Name	M/C/E	Method Used		Emission Point 1	T (Total) KG/Year	A (Accidental) KG/Year	F (Fugitive) KG/Year
			Method Code	Designation or Description				
					0.0	0.0	0.0	0.0

ADD NEW ROW DELETE ROW * * Select a row by double-clicking on the Pollutant Name (Column B) then click the delete button

4.3 RELEASES TO WASTEWATER OR SEWER

[Link to previous years emissions data](#)

| PRTR#: W0238 | Facility Name : Ballymount MRF (Merrywell) | Filename : AER PRTR W0238 2 | 26/03/2015 10:10

SECTION A : PRTR POLLUTANTS

OFFSITE TRANSFER OF POLLUTANTS DESTINED FOR WASTE-WATER TREATMENT OR SEWER					Please enter all quantities in this section in KGs				
POLLUTANT		METHOD			ADD EMISSION POINT	QUANTITY			
No. Annex II	Name	M/C/E	Method Used		Emission Point 1	T (Total) KG/Year	A (Accidental) KG/Year	F (Fugitive) KG/Year	
			Method Code	Designation or Description					
						0.0	0.0	0.0	0.0

* Select a row by double-clicking on the Pollutant Name (Column B) then click the delete button

SECTION B : REMAINING POLLUTANT EMISSIONS (as required in your Licence)

OFFSITE TRANSFER OF POLLUTANTS DESTINED FOR WASTE-WATER TREATMENT OR SEWER					Please enter all quantities in this section in KGs				
POLLUTANT		METHOD			ADD EMISSION POINT	QUANTITY			
Pollutant No.	Name	M/C/E	Method Used		Emission Point 1	T (Total) KG/Year	A (Accidental) KG/Year	F (Fugitive) KG/Year	
			Method Code	Designation or Description					
						0.0	0.0	0.0	0.0

* Select a row by double-clicking on the Pollutant Name (Column B) then click the delete button

4.4 RELEASES TO LAND

[Link to previous years emissions data](#)

| PRTR#: W0238 | Facility Name : Ballymount MRF (Merrywell) | Filename : AER PRTR W0238 2014.xls | Return Year : 2014 |

26/03/2015 10:10

SECTION A : PRTR POLLUTANTS

RELEASES TO LAND					Please enter all quantities in this section in KGs		
POLLUTANT		METHOD			ADD EMISSION POINT	QUANTITY	
No. Annex II	Name	M/C/E	Method Code	Designation or Description	Emission Point 1	T (Total) KG/Year	A (Accidental) KG/Year
						0.0	0.0
						0.0	0.0

* Select a row by double-clicking on the Pollutant Name (Column B) then click the delete button

SECTION B : REMAINING POLLUTANT EMISSIONS (as required in your Licence)

RELEASES TO LAND					Please enter all quantities in this section in KGs		
POLLUTANT		METHOD			ADD EMISSION POINT	QUANTITY	
Pollutant No.	Name	M/C/E	Method Code	Designation or Description	Emission Point 1	T (Total) KG/Year	A (Accidental) KG/Year
						0.0	0.0
						0.0	0.0

5. ONSITE TREATMENT & OFFSITE TRANSFERS OF WASTE

| PRTR#: W0238 | Facility Name : Ballymount MRF (Merryw eil) | Filename : AER PRTR W0238 2014.xls | Return Year : 2014 |

26/03/2015 10:10

Please enter all quantities on this sheet in Tonnes

18

Transfer Destination	European Waste Code	Hazardous	Quantity (Tonnes per Year)	Description of Waste	Waste Treatment Operation	Method Used		Location of Treatment	Haz Waste : Name and Licence/Permit No of Next Destination Facility Non Haz Waste: Name and Licence/Permit No of Recover/Disposer	Haz Waste : Address of Next Destination Facility Non Haz Waste: Address of Recover/Disposer	Name and License / Permit No. and Address of Final Recoverer / Disposer (HAZARDOUS WASTE ONLY)	Actual Address of Final Destination i.e. Final Recovery / Disposal Site (HAZARDOUS WASTE ONLY)
						M/C/E	Method Used					
To Other Countries	15 01 01	No	179.44	paper and cardboard packaging	R12	M	Weighed	Abroad	Aganail Ltd.,Broker/Belgium	88 Cherrywood Cresent, Clondalkin, Dublin 22., Ireland		
To Other Countries	15 01 01	No	178.46	paper and cardboard packaging	R12	M	Weighed	Abroad	Jiangsu Provincial Foreign Trade Corp.,Broker/Mill/China	2602 mansion xinhua building,55 zhonshan road,Nanjiug City Jiangsu Province,,China		
To Other Countries	15 01 01	No	15338.25	paper and cardboard packaging	R12	M	Weighed	Abroad	Mark Lydon Papers, Broker/China	12, The Triangle, Nottingham, NG2 1AE, United Kingdom		
To Other Countries	15 01 01	No	26875.78	paper and cardboard packaging	R12	M	Weighed	Abroad	MLM Ltd., Broker/China	Wilmslov road, Adamson house Towers business park., Manchester, M20 2YY, United Kingdom		
To Other Countries	15 01 01	No	152.68	paper and cardboard packaging	R12	M	Weighed	Abroad	Reliance Fibres Ltd, Broker/India	7th Floor Hyde House ,Edgeware road, London, NW96LH, United Kingdom		
To Other Countries	15 01 01	No	384.5	paper and cardboard packaging	R12	M	Weighed	Abroad	Wuxi Longchem Paper Co Ltd, Broker/Mill - China	43 Zhongxing west road, Loushe town Huishan District, Wuxi Longchem Paper Co Ltd, Jiangsu, China		
To Other Countries	15 01 01	No	1784.64	paper and cardboard packaging	R12	M	Weighed	Abroad	Zhongshan Yongfa Paper Industries Co. Ltd, Broker/mill - China	Zhongshan Sugar Factory, Huangpu Town, Zhongshan City, ..., China		
To Other Countries	15 01 02	No	41.68	Plastic Packaging	R12	M	Weighed	Abroad	Asia Global Trade, Broker - Belgium	Suite 5,30 Lancaster Gate, London, W2 3LP, United Kingdom		
To Other Countries	15 01 02	No	42.54	Plastic Packaging	R12	M	Weighed	Abroad	Asia Global Trade, Broker - UK	Suite 5,30 Lancaster Gate, London, W2 3LP, United Kingdom		
To Other Countries	15 01 02	No	606.04	Plastic Packaging	R12	M	Weighed	Abroad	Boost Recycling Ltd. UK, Broker - Malaysia	Swaffhem road, 47, Burwell Cambridgeshire, CB25 0AN, United Kingdom		
To Other Countries	15 01 02	No	249.18	Plastic Packaging	R12	M	Weighed	Abroad	CherryPipes Ltd, Broker - No. Ireland	12 Derryhirk Road, , Dungannon, BT7166N H, United Kingdom		

To Other Countries	1 02	No	202.1 Plastic Packaging	R12	M	Weighed	Abroad	GFSL Ltd, Broker - UK	96 Toft Hill, Bishop Auckland, Durham, DL14 0JA, United Kingdom
To Other Countries	15 01 02	No	21.76 Plastic Packaging	R12	M	Weighed	Abroad	JFC Manufacturing, EA/WML/100 0/01	Hardwick Road Astmoor Ind. Est Rancorn Cheshire WA7 1PH, Rancorn, Cheshire, WA71 PH, United Kingdom
To Other Countries	15 01 02	No	122.36 Plastic Packaging	R12	M	Weighed	Abroad	JFC Plastic Ltd, Broker - UK Leinster	Hardwick Road Astmoor Ind. Est Rancorn Cheshire WA7 1PH, Rancorn, Cheshire, WA71 PH, United Kingdom
To Other Countries	15 01 02	No	48.16 Plastic Packaging	R12	M	Weighed	Abroad	Environmental, Broker - Germany	Claremont Business Park, Haggardstown Dundalk, Co. Louth, Ireland
To Other Countries	15 01 02	No	69.78 Plastic Packaging	R12	M	Weighed	Abroad	Materia Environment Ltd, Broker - Germany	scilly, kipper house, kinsale, co. cork, Ireland
To Other Countries	15 01 02	No	20.0 Plastic Packaging	R12	M	Weighed	Abroad	Materia Environment Ltd, Broker - France	scilly, kipper house, kinsale, co. cork, Ireland
To Other Countries	15 01 02	No	126.24 Plastic Packaging	R12	M	Weighed	Abroad	MLM Ltd., Broker - China	Wilmslov road, Adamson house Towers business park., Manchester, M20 2YY, United Kingdom
To Other Countries	15 01 02	No	881.42 plastic packaging	R12	M	Weighed	Abroad	Monoworld Ltd., Broker - UK	Rushden road, Sharnbrook, Bedfordshire, MK44 1ND, United Kingdom
Within the Country	15 01 02	No	19.06 plastic packaging	R12	M	Weighed	Offsite in Ireland	Mulleadys Ltd, W0169-01	Cloonaugh, Drumlish, Longford, Ireland
To Other Countries	15 01 02	No	39.74 plastic packaging	R12	M	Weighed	Abroad	Peute Plastic Recycling, Broker - Netherlands	Baanhoekweg 4, 3313 La Dordrecht, Netherlands
Within the Country	15 01 02	No	60.38 plastic packaging	R12	M	Weighed	Offsite in Ireland	Shabra Group, WFP-MN-08-0022-02	Killycard Ind. Est. Bree, Castleblaney, Co. Monaghan, Ireland
To Other Countries	15 01 02	No	38.44 plastic packaging	R12	M	Weighed	Abroad	Validia GMBH, Broker - Estonia	Markische, Heide 85 14532, Kleinmachnow, Estonia
To Other Countries	15 01 02	No	296.4 plastic packaging	R12	M	Weighed	Abroad	Vanden Globel Ltd, Broker - china	807 McKenny Centre, 660 Castle Park Road, Kowloon Hong Kong, China
To Other Countries	15 01 02	No	68.54 plastic packaging	R12	M	Weighed	Abroad	Vanden Globel Ltd, Broker - Hong Kong	807 McKenny Centre, 660 Castle Park Road, Kowloon Hong Kong, China
To Other Countries	15 01 02	No	93.36 plastic packaging	R12	M	Weighed	Abroad	Vanden Globel Ltd, Broker - Indonesia	807 McKenny Centre, 660 Castle Park Road, Kowloon Hong Kong, China

To Other Countries	15 01 02	No	74.12 plastic packaging	R12	M	Weighed	Abroad	Vanden Globel Ltd,Broker - Lithuania	807 McKenny Centre ,660 Castle Park Road ,Kowloon Hong Kong,...,China
To Other Countries	15 01 02	No	74.0 plastic packaging	R12	M	Weighed	Abroad	Vanden Globel Ltd,Broker - Malaysia	807 McKenny Centre ,660 Castle Park Road ,Kowloon Hong Kong,...,China
To Other Countries	15 01 02	No	68.2 plastic packaging	R12	M	Weighed	Abroad	Vanden Globel Ltd,Broker - Taiwan	807 McKenny Centre ,660 Castle Park Road ,Kowloon Hong Kong,...,China
To Other Countries	15 01 02	No	45.56 plastic packaging	R12	M	Weighed	Abroad	Vanden Globel Ltd,Broker - UK	807 McKenny Centre ,660 Castle Park Road ,Kowloon Hong Kong,...,China
To Other Countries	15 01 02	No	19.6 plastic packaging	R12	M	Weighed	Abroad	Vanden Globel Ltd,Broker - Vietnam	807 McKenny Centre ,660 Castle Park Road ,Kowloon Hong Kong,...,China
To Other Countries	15 01 02	No	1907.74 plastic packaging	R12	M	Weighed	Abroad	WRC Recycling ,Broker - UK	Auchans Farm,Johnstone ,Renfrewshire Glasgow,PA6 7EE,United Kingdom 96 Toft Hill,Bishop Auckland,Durham,DL14
To Other Countries	15 01 04	No	45.42 metallic packaging	R12	M	Weighed	Abroad	GFSL Ltd,Broker - UK	OJA,United Kingdom Corbally North Glanmire Co Cork
To Other Countries	15 01 04	No	267.12 metallic packaging	R12	M	Weighed	Abroad	Green Dragon Recycling Ltd.,Broker - UK	Ireland,Glanmire,Co. Cork,..,Ireland Corbally North Glanmire Co Cork
To Other Countries	15 01 04	No	57.3 metallic packaging	R12	M	Weighed	Abroad	Green Dragon Recycling Ltd.,Broker - Greece	Ireland,Glanmire,Co. Cork,..,Ireland Rushden road,Sharnbrook,Bedfordshire,MK44 1ND,United Kingdom
To Other Countries	15 01 04	No	543.78 metallic packaging	R12	M	Weighed	Abroad	Monoworld Ltd.,Broker - UK	Kiffa Crosserlough,Ballyjamesduff ,Co.Cavan,..,Ireland
To Other Countries	15 01 04	No	254.93 metallic packaging	R12	M	Weighed	Abroad	Wilton Waste Recycling Ltd.,Broker - Netherlands	Kiffa Crosserlough,Ballyjamesduff ,Co.Cavan,..,Ireland
To Other Countries	15 01 04	No	192.34 metallic packaging	R12	M	Weighed	Abroad	Wilton Waste Recycling Ltd.,Broker - U.S.A	Kiffa Crosserlough,Ballyjamesduff ,Co.Cavan,..,Ireland
To Other Countries	15 01 04	No	900.22 metallic packaging	R12	M	Weighed	Abroad	Wilton Waste Recycling Ltd.,Broker - UK	Kiffa Crosserlough,Ballyjamesduff ,Co.Cavan,..,Ireland
Within the Country	15 01 04	No	56.34 metallic packaging	R12	M	Weighed	Offsite in Ireland	Wilton Waste Recycling Ltd.,WFP CN-10-000-5-01(1)	Crosserlough,Ballyjamesduff ,Co.Cavan,..,Ireland
To Other Countries	15 01 04	No	19.32 metallic packaging	R12	M	Weighed	Abroad	WRC Recycling ,Broker - UK	Auchans Farm,Johnstone ,Renfrewshire Glasgow,PA6 7EE,United Kingdom

Within the Country	12 08	No	7.84 textiles other wastes (including mixtures of materials) from mechanical treatment of wastes other than those mentioned in 19	R12	M	Weighed	Offsite in Ireland	NCBI, Exempt "Charity"	Unit 7&8 Oakfield Industrial Estate, Clondaklin D22, Dublin, Ireland
Within the Country	19 12 12	No	25055.45 12 11 other wastes (including mixtures of materials) from mechanical treatment of wastes other than those mentioned in 19	R12	M	Weighed	Offsite in Ireland	Panda Waste Services, W0140-03	Beuparc Business Park, Navan, Co. Meath, Ireland
To Other Countries	19 12 12	No	4756.04 12 11 discarded electrical and electronic equipment other than those mentioned in	R12	M	Weighed	Abroad	Re gen Waste Ltd., Broker - UK	Estate, Newry, Co. Down BT356 jQ, United Kingdom
Within the Country	20 01 36	No	5.6 20 01 21, 20 01 23 and 20 01 35	R12	M	Weighed	Offsite in Ireland	KMK T/A Weee Recycling, W0113-04	cappincur industrial estate, daingean road tullamore, offaly, Ireland
Within the Country	20 03 01	No	860.92 mixed municipal waste	R12	M	Weighed	Offsite in Ireland	Dillon Waste & Recycling, WFP-KY-10-001	The Kerries, Tralee, Co. Kerry, Ireland
Within the Country	20 03 01	No	1851.24 mixed municipal waste	R12	M	Weighed	Offsite in Ireland	Killarney Waste Disposal, W0217-01	Aughacureen, Killarney, Kerry, Ireland
Within the Country	20 03 01	No	46.46 mixed municipal waste	R12	M	Weighed	Offsite in Ireland	Panda Waste Services, W0140-03	Beuparc Business Park, Navan, Co. Meath, Ireland
Within the Country	20 03 01	No	24.5 mixed municipal waste	R12	M	Weighed	Offsite in Ireland	Panda Waste Services, W0039-02	Ballymount Cross, Tallaght, Dublin 24, Ireland
To Other Countries	20 03 01	No	7678.02 mixed municipal waste	R12	M	Weighed	Abroad	Re gen Waste Ltd., Broker - UK	Shepards drive, Carbane Industrial Estate, Newry, Co. Down BT356 jQ, United Kingdom