



*Head office: Beauparc Business Park, Navan, Co. Meath*

*Waste Licence Number W0140-03*

*Annual Environmental Report*

*01<sup>st</sup> January 2014 – 31<sup>st</sup> December 2014*

## Table of Contents

Table of Contents .....	2
1.0 Introduction.....	4
1.1 Company details.....	4
1.2 Management Structure .....	4
1.3 Financial Provision .....	4
1.4 Environmental Policy.....	5
1.5 Activities .....	5
1.6 Waste Activities carried out at the Facility.....	7
1.7 Water Usage:.....	8
2.0 Summary Information.....	8
2.1 Waste Received.....	8
2.2 Waste Transferred Off-Site for Disposal or Recovery .....	9
2.3 Waste Recovery Reports.....	9
2.4 Summary report on emissions and interpretation of environmental monitoring ....	10
2.4.1 <i>Surface Water</i> .....	10
2.4.2 <i>Dust Emissions</i> .....	10
2.4.3 <i>Noise Emissions</i> .....	12
2.4.4 <i>Trade Effluent</i> .....	15
2.4.5 <i>Compost Analysis</i> .....	15
2.4.6 <i>Biofilter Monitoring</i> .....	15
2.4.7 <i>Bund, pipe and underground storage tanks integrity</i> .....	16
2.4.8 <i>Summary of resource and energy consumption</i> .....	16
2.5 Site infrastructure.....	16
2.5.1 <i>In-place</i> .....	16
2.5.2 <i>Planned Infra-structure</i> .....	18
2.6 Progress Report on Proposals Developed to Minimise Water Demand & Trade Effluent Discharge .....	18
2.7 PRTR Emission.....	19
3.0 Environmental objectives and targets – 2014 and 2015. ....	20
3.1 Completion of Environmental Targets & Objectives 2014 .....	22
3.2 Summary of reported incidents and complaints.....	22
3.2.1 <i>Reported Incidents Summary</i> .....	22
3.2.2 <i>Complaints:</i> .....	22

3.3 Review of nuisance controls .....	23
3.3.1 <i>Odour</i> .....	23
3.3.2 <i>Noise</i> .....	23
3.3.3 <i>Dust</i> .....	23
3.3.4 <i>Vermin</i> .....	24
3.3.5 <i>Flies</i> .....	24
3.3.6 <i>Birds</i> .....	24
3.3.7 <i>Litter</i> .....	24
4.0 Development of Procedures on Site .....	24
5.0 Pollution Emission Register .....	24
6.0 Report on Programme for Public Information .....	25
Appendix A .....	27
Appendix B .....	28
Appendix C .....	29
Appendix D .....	30
Appendix E .....	31

## 1.0 Introduction

Panda were granted their third EPA Waste Licence W0140-03 on the 26<sup>th</sup> March 2009. This replaces the old Licence W0140-02. Under this licence, Panda are permitted to process 250,000 tonnes per annum. Appendix A illustrates the current site layout.

### 1.1 Company details

Licence No: W0140-03

Name: Nurendale Limited t/a Panda

Address: Rathdrinagh  
Beauparc  
Co. Meath

Telephone Number: 1850 65 65 65

Fax Number: 046 9024189

Website: [www.panda.ie](http://www.panda.ie)

### 1.2 Management Structure

Eamon Waters is the Managing Director of Panda. Noel Waters and Brian McCabe are the company's directors. David Naughton is the Environmental Manager. There are approximately 160 employees either working directly or indirectly at the facility. Appendix B illustrates the organisational structure of the facility.

### 1.3 Financial Provision

A statement from our accountants is provided in Appendix C. At the present time the annual turnover and company assets are sufficient to offset environmental liabilities incurred during the course of operations and in the event that the company is closed.

#### 1.4 Environmental Policy

In carrying out our function, Panda acknowledge that our activities impact upon the environment both through routine internal operations and the actions of our staff.

It is Panda's policy to protect the environment during all activities, both on and off-site.

This is achieved by:

- Strategic preparation and implementation of operating procedures (including an emergency response procedure).
- Utilizing BAT (Best Available Technology).
- Actively promoting environmental awareness amongst staff and clients through appropriate training and communication programs.
- Reduce energy use through effective education and awareness and the installation of energy efficient technology where appropriate.
- Implementing a policy of continuous improvement, by means of targeted objectives. All objectives and targets are monitored and up-dated accordingly.

Panda are committed to complying with all relevant environmental regulations and aim to supply a safe competitive and sustainable service with specific regards to the surrounding environment.

#### 1.5 Activities

Under the waste licence W0140-03, Panda are licenced to conduct the following activities:

#### **Licensed Waste Disposal Activities, in accordance with the Third Schedule of the Waste Management Acts, 1996 to 2003**

##### **Class 11.**

Blending or mixture prior to submission to any activity referred to in a preceding paragraph of this Schedule.

**Class 12.**

Repackaging prior to submission to any activity referred to in a preceding paragraph of this Schedule.

**Class 13.**

Storage prior to submission to any activity referred to in a preceding paragraph of this Schedule, other than temporary storage, pending collection, on the premises where the waste concerned is produced.

***Licensed Waste Recovery Activities, in accordance with the Fourth Schedule of the Waste Management Acts, 1996 to 2003***

**Class 2.**

Recycling or reclamation of organic substances, which are not used as solvents (including composting and other biological transformation processes).

**Class 3.**

Recycling or reclamation of metals and metal compounds.

**Class 4.**

Recycling or reclamation of other inorganic materials.

**Class 11.**

Use of waste obtained from any activity referred to in a preceding paragraph of this Schedule.

**Class 13.**

Storage of waste intended for submission to any activity referred to in a preceding paragraph of this Schedule, other than temporary storage, pending collection, on the premises where such waste is produced.

Panda provide a waste collection service for the domestic, commercial and industrial sectors throughout Ireland and was awarded the Repak “Large Operator of the Year award 2007” and “Runner up” in 2008, 2009, 2010, 2011 and 2012. Panda also won the inaugural Meath Innovator of the year 2010 and Meath Overall Business of the year 2010. Irish Packaging Recycling (Subsidiary) won the Repak “Recycling Company of the year 2014”.

The facility normal operating hours are 8am-6pm (Monday-Friday) & 9am-1pm (Saturdays). The facility is licensed to accept non-hazardous wastes only and to operate a civic amenity facility.

#### 1.6 Waste Activities carried out at the Facility

Waste accepted and dispatched at the facility is weighed using P&L's weighbridge software "IWS6". Panda operate three different sheds for processing the different waste streams. Waste accepted into building 1 includes Wood, and Dry Recyclables including Source Segregated Paper and Cardboard.

Building 2 is used to segregate the C&D waste entering the site using a shredder, trommel, wind blower, magnet, ballistic separator and a picking line to recover ferrous and non ferrous metals, rubble, timber and C&D fines. The lights fraction is sent to shed 3 for SRF production. Shovels are used to load the shredder, and a grab is used to pick out large pieces of steel, wood etc and load the waste sent to landfill.

Panda operate a rock crusher to further process the C&D rubble to a suitable size material and remove contaminants with magnets and a picking station. Panda process wood on-site using a wood shredder. A grab is used to load the material. The shredded timber is then recovered for example in blocks for pallets.

The dual weighbridge has been operational since October 2006. The second weighbridge was retained as back up for the dual weighbridge and is fully operational.

Panda produce SRF in building 3. The process involves the use of Ballistics, Magnets, Eddy Currents, Single Drum Separators, Optical Sorters and Shredders to produce a SRF material suitable as a fuel substitute in Cement Manufacturing Plants.

### 1.7 Water Usage:

Water is extracted from 2 wells on site and stored in a water storage tank. Water for office and amenities use is taken from public supply and is metered by the council. All other water used on site is taken from the water storage tank. For emergency purposes there is an over ground water storage tank with ring mains.

Water from the storage tank used on site consists of:

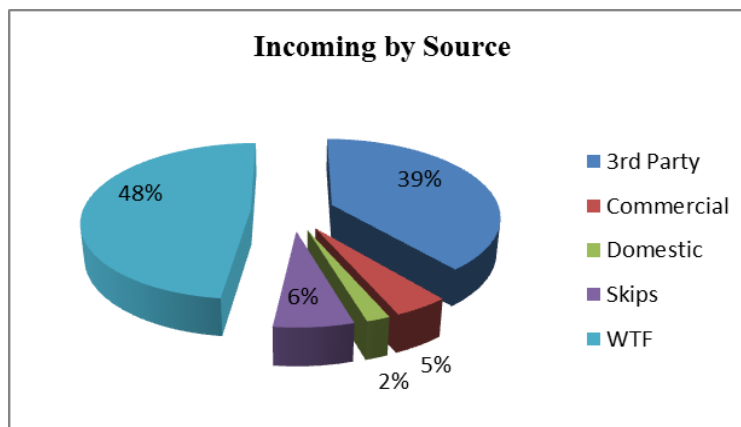
- In-house road sweeper.
- Dust suppression sprayers at doorways into shed one and on the eastern boundary fence between the back-up weighbridge and the retail outlet to the north.
- One mobile rotary atomiser unit
- Dust suppression systems
- Hoses on site for dust suppression.
- Sprinkler system on biofilter and in-vessel compost tunnels.
- Truck wash.
- Fire Fighting Equipment.

## 2.0 Summary Information

### 2.1 Waste Received

The waste received at the facility for 2014 was 130,507.69 tonnes. From the pie chart (Fig 1) it is evident that waste from a Waste Transfer Station is the largest source of waste accepted.

**Fig. 1:** Waste accepted at the facility by Customer profile





## 2.2 Waste Transferred Off-Site for Disposal or Recovery

See Appendix D for the breakdown of the different destinations used for the waste accepted at the facility and waste removed off site by EWC Code.

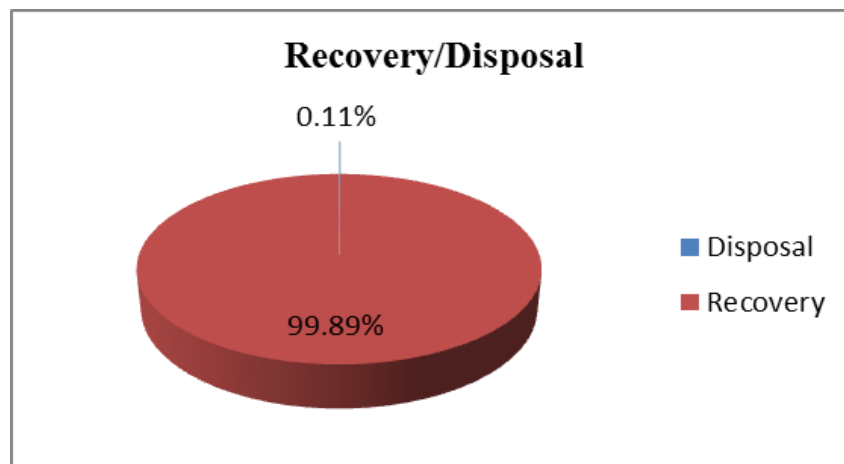
## 2.3 Waste Recovery Reports

To contribute to the Landfill Directive, Panda operates a shredder, trommel, magnet and an in-vessel composting system.

Panda applied to the Agency for a review to our current Waste Licence (W0140-03) in September 2009. This review was submitted to the Agency, so that Panda can produce a SRF/RDF product from the residual waste previously sent to Landfill. Panda also reviewed the licence for the purpose of constructing an Anaerobic Digestion/Composting plant. Panda have rolled out a source segregated collection service for biodegradable waste for both household and commercial customers.

Panda process mixed C&D waste in building 2, this includes a shredder, trommel, magnet, wind shifter and a picking line so as to divert as much C&D waste away from landfill as possible in order to comply with “A Resource Opportunity, 2012” for landfill diversion. To date the processing of C&D Waste has been extremely successful with the majority of the residual being processed into Solid Recovered Fuel.

**Fig. 2:** Outgoing destination recovery rate.



## 2.4 Summary report on emissions and interpretation of environmental monitoring

Under Schedule C of the Waste Licence W0140-03, Panda monitor compost, trade effluent, noise and ambient air monitoring. The following sub-headings detail the results from independent laboratories of the different parameters and the emission limit values ELV's set by the EPA and any complaints and incident that may have occurred during the year.

### *2.4.1 Surface Water*

Surface water passes through a silt trap and oil interceptor prior to being discharged into a holding tank. The surface water monitoring point is located at the co-ordinates X/E 297456.080 Y/N 269143.030. Monitoring conducted during 2014 demonstrated that there is no contamination to the surface water from the facility.

Panda propose to install a wetland system for surface water drainage as set out in the Environmental Targets and Objectives and received planning permission for its construction. The proposal was submitted to the Agency for approval.

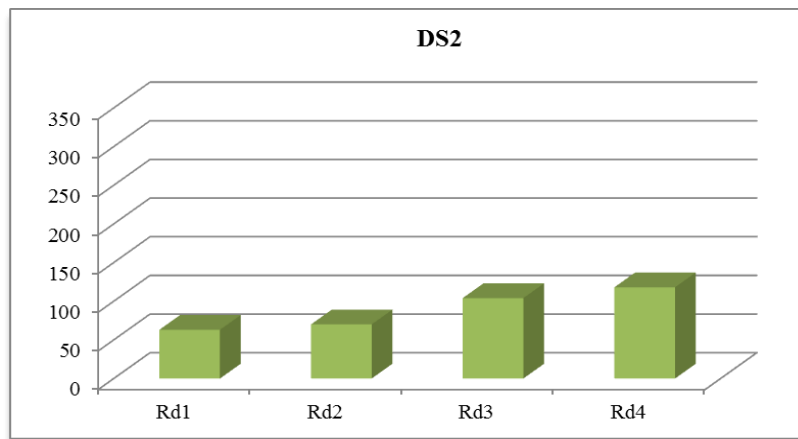
### *2.4.2 Dust Emissions*

As per schedule B4 for dust deposition limits, there are currently five sampling locations. As per condition 6.13.1, all waste for disposal, stored overnight at the facility was placed in suitably covered and enclosed containers within the waste transfer buildings and were removed within 48 hours or 72 hours on a bank holiday weekend. In dry weather, the site roads and any other areas used by vehicles were sprayed with water. A dust suppression unit was installed in Shed 2 to ensure dust emissions from the bottom shed are kept to a minimum. Figs 3-7 illustrate dust recordings for 2014.

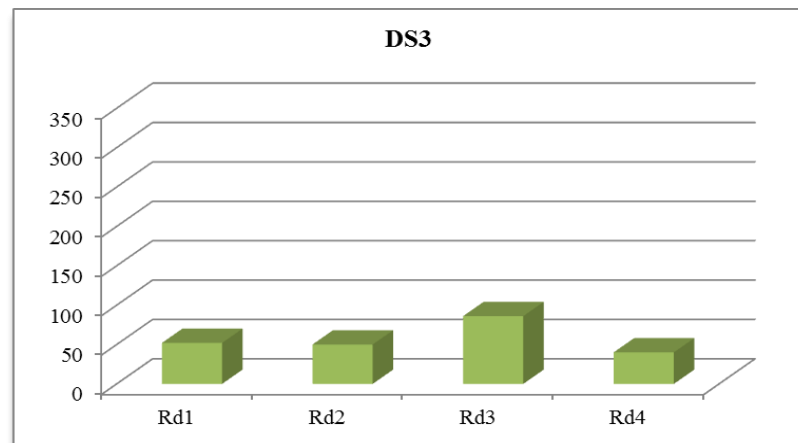
**Fig. 3:** Dust emission results for DS1



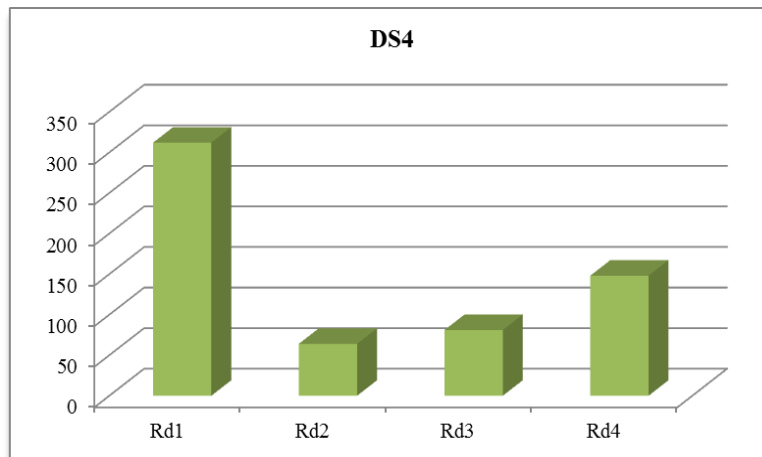
**Fig. 4:** Dust emission results for DS2



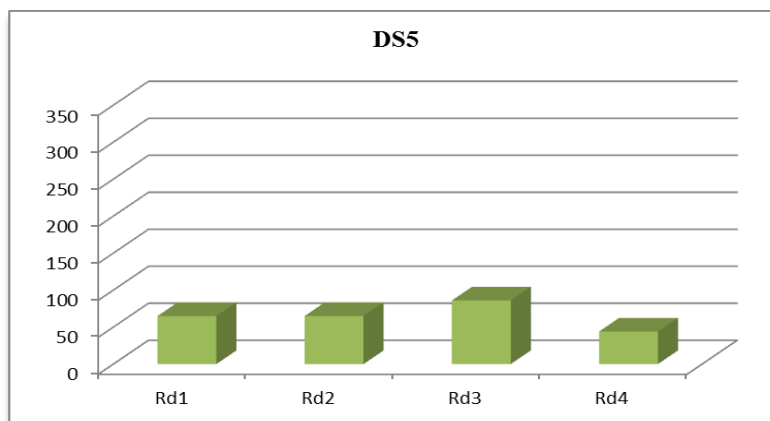
**Fig. 5:** Dust emission results for DS3



**Fig. 6:** Dust emission results for DS4



**Fig. 7:** Dust emission results for DS5



As per Schedule B.4, the dust deposition limit for the site is 350 mg m<sup>-2</sup> d<sup>-1</sup>. Dust emissions were within licenced ELV's for 2014.

### 2.4.3 Noise Emissions

Noise emissions are monitored according to Schedule B.3 and the emission limit values (ELV) set out in Schedule C5 of the licence. An independent competent consultant was commissioned to conduct the noise sampling throughout the year. A summary of the recorded noise levels for this reporting period is provided in Tables 1-4.

**Table 1:** Recorded Noise Levels dB(A) on 18<sup>th</sup> February 2014– Intervals 30 minutes

Location	Time	Leq	L10	L90	L50	Comments
NSL1	14.00	51.6	54.6	45.7	47.3	N2 and slip road traffic. Panda noise source from site less than L50 of 47.3 dBA
NSL2	14.45	50.8	53.0	43.2	47.0	N2 & slip road traffic. Panda waste site noise less than L50 of 47.0 dBA
NSL3	15.45	77.6	81.2	53.6	64.3	N2 road traffic with Panda site noise inaudible at less than 44.3 dBA
NSL4	16.45	76.8	81.5	54.5	67.6	N2 road traffic with Panda site noise just audible at 47.6 dBA.

**Table 2:** Recorded Noise Levels dB(A) on 9<sup>th</sup> April 2014– Intervals 30 minutes

Location	Time	Leq	L10	L90	L50	Comments
NSL1	09.00	53.6	55.7	45.4	48.9	N2 and slip road traffic. Panda noise source from site less than L50 of 45.0 dBA
NSL2	09.30	53.3	55.4	46.4	49.4	N2 & slip road traffic. Panda waste site noise less than L50 of 49.4 dBA
NSL3	10.15	75.4	79.1	52.8	63.4	N2 road traffic with Panda site noise inaudible at less than 44.3 dBA which was $L_{min}$
NSL4	11.00	77.6	81.6	53.4	66.5	N2 road traffic with Panda site noise just audible at less than 50 dBA

**Table 3:** Recorded Noise Levels dB(A) on 17<sup>th</sup> September 2014– Intervals 30 minutes

Location	Time	Leq	L10	L90	L50	Comments
NSL1	11.00	49.2	51.1	45.5	41.1	N2 and slip road traffic. Panda noise source from site less than L50 of 45.5 dBA
NSL2	10.45	48.2	49.9	45.1	42.4	N2 & slip road traffic. Panda waste site noise less than L50 of 45.1 dBA
NSL3	11.45	79.4	84.1	56.9	66.8	N2 road traffic with Panda site noise inaudible at less than 45.7 dBA
NSL4	12.30	77.6	82.3	55.2	66.1	N2 road traffic with Panda site noise just audible at 46.2 dBA

**Table 4:** Recorded Noise Levels dB(A) on 20<sup>th</sup> November– Intervals 30 minutes

Location	Time	Leq	L10	L90	L50	Comments
NSL1	13.03	51.1	53.2	43.4	47.3	N2 and slip road traffic. Panda noise source from site less than L50 of 47.3dBA
NSL2	13.12	50.2	52.3	44.5	48.6	N2 & slip road road traffic. Panda waste site noise less than L50 of 44.5dBA
NSL3	14.16	77.9	85.8	64.1	55.7	N2 road traffic with Panda site noise inaudible at less than 46.8dBA
NSL4	15.23	76.4	83.1	64.5	54.8	N2 road traffic with Panda site noise just audible at 46.3 dBA

The noise emissions at all NSL's from Panda are well within the terms of their noise emissions levels. There were no tonal or impulsive noise emissions from the works audible at any of the nearest residences.

#### 2.4.4 Trade Effluent

As part of the monitoring programme Panda must test the trade effluent sent off site for disposal. Table 5 shows the results for the trade effluent tested for 2014. The parameters are within acceptable levels for waste water treatment plants to be able to treat.

**Table 5:** Results for Trade effluent sent off site for disposal

Parameter	Units	Result 28/03/14	Result 07/08/14
Ammonia	mg/L as N	28.83	103.04
Arsenic	ug/L	22.93	15.2
BOD	mg/L	420	3800
Boron	ug/L	720.8	722.9
Cadmium	ug/L	1.945	3.092
Chloride	mg/L	271.57	518.4
Chromium	ug/L	40.37	84.08
COD	mg/L	1665	7245
Copper	ug/L	110.3	234.5
Lead	ug/L	340.9	227.8
Mercury	ug/L	1.55	0.982
Mineral Oil	ug/L	5108.69	2353.92
Nickel	ug/L	71.14	195.7
pH	pH units	8.8	6.4
Selenium	ug/L	5.438	5.006
Solids (Total Suspended)	mg/L	10743	2562
Sulphate	mg/L as SO <sub>4</sub>	1395.09	326.42
Zinc	ug/L	617.8	7148

#### 2.4.5 Compost Analysis

As part of the monitoring programme Panda must test Compost bi-annually. No analysis was carried out in 2014 as the In-Vessel Wright System was suspended from September 2010, therefore no output was produced to be analysed.

#### 2.4.6 Biofilter Monitoring

Panda are required to conduct ambient air monitoring from the biofilter unit on site. No analysis was carried out in 2014 as there were no emissions from the biofilter since 2010.

#### *2.4.7 Bund, pipe and underground storage tanks integrity*

The integrity and water tightness of all underground pipes, all tanks, bunding structures and containers and their resistance to penetration by water and other materials is required to be carried out every three years and thereafter and reported to the Agency. A bund, pipeline and UST integrity testing was conducted in 2014. The reports show that all under UST, pipes and bund were in accordance with Condition 3.17.

#### *2.4.8 Summary of resource and energy consumption*

The Table 6 below shows a summary of the energy consumption.

**Table 6:** Summary of Energy Consumption 2014.

Resource	
Gas Oil	238,714 Litres
Electricity	3306.59 MWhr

##### *2.4.8.1 Water*

Panda extract water from the surface water tank for re-use on site. The two wells on site are used as back up for water storage in the overground storage tank.

#### *2.5 Site infrastructure*

Panda acquired land at the southern and Eastern boundary of the site so as to complete the surface water run off drainage on site and to construct building three at the southern end of the facility. Building three is complete. Panda have been granted planning permission to construct an anaerobic digestion/composting plant to the East of the facility. Panda applied to the Agency to review our current Waste Licence W0140-03 in 2009 for this development.

##### *2.5.1 In-place*

The current site infrastructure is outlined below in List 1. Table 7 details the waste processing equipment used on site, together with the associated duty capacities



**List 1: Site infrastructure**

1. Office block
2. Truck wash
3. Two x Weighbridge and associated office.
4. One x Waste processing building (2800 m<sup>2</sup>)
5. One x Waste processing building (2600 m<sup>2</sup>)
6. One x Waste processing building (4,248 m<sup>2</sup>)
7. Two x Dust suppression system
8. Two x In-vessel Composting Tunnels
9. Ancillary ESB building
10. Canteen & toilets and associated waste water treatment system.
11. Water reservoir (164 m<sup>3</sup>) capacity
11. Fencing around the site
12. Tyre Bay

**Table 7: Waste processing equipment**

Description	Duty Capacity
2 x Composting Tunnels	130 Tonnes per hour (not in use)
1 x Doppstadt Wood Shredder	30 Tonnes per hour
1 x M&J 4000 Shredder	40 Tonnes per hour
1 x Trommel	40 Tonnes per hour
1 x Magnet	5 Tonnes per hour
1 x Nihot Density Separator	50 tonnes per hour
1 x Ballistic Separator	50 Tonnes per hour
1 x Flip Flop	70 tonnes per hour
1 x Magnet	20 Tonnes per hour
1 x Wind Shifter	20 Tonnes per hour
1 x Rubble Crusher	25 Tonnes per day
<b>Mobile</b>	
1 x Volvo L110	2 x Kobelco Track
1 x Teleporter	1 x Hoists

1 x Volvo L60	1 x Forklift
1 x Fuchs Grab	1 x Shunter
1 x Volvo L220	
1 x Scarab Roadsweeper	
2 x Ballistic Separator	50 tonnes per hour combined
6 x Overband Magnets	15 tonnes per hour combined
1 x Eddy Currents	3 tonnes per hour
2 x Untha shredder	20 tonnes per hour combined
1 x Single Drum Separator	25 tonnes per hour
1 x M&J 6000 Shredder	35 tonnes per hour
1 x trommel	60 tonnes per hour

There is sufficient back up if the shredder; a loading shovel or an excavator breaks down. The stone crusher is only used intermittently and therefore back up is not required. In the event that there is a major problem with a significant piece of plant (i.e. if it can't be fixed within 48 hrs), unprocessed waste will be transferred to other authorised waste processing facilities.

### *2.5.2 Planned Infra-structure*

Proposed infrastructure is outlined in List 2. It is anticipated that the wetlands will be in-place by Q3 2015, with the Anaerobic Digestion plant being built at a later date.

#### **List 2:** Proposed infrastructure:

1. Wetland for surface water run off
2. Anaerobic Digestion Building

### 2.6 Progress Report on Proposals Developed to Minimise Water Demand & Trade Effluent Discharge

To minimise the water demand on site, Panda are investigating collecting the rainwater from the roof and using this in the road sweeper to clean the yard. This would constitute a significant reduction in usage on site.

## 2.7 PRTR Emission.

Panda's PRTR emission return is provided in Appendix E.

### 3.0 Environmental objectives and targets – 2014 and 2015.

No	Objective & Target	Method of Achievement	Responsibility	2014 Programme	Complete in 2014	2015 Programme
1	<b>Assess the Effectiveness of Nuisance Control Procedures</b>	Continually review and assess all nuisance control procedures to ensure minimal impact on surrounding area	Environmental Manager	Continuous	Complete	Aug '15
		Ensure yards are cleaned at the end of each working day	Operatives	Continuous	Continuous	Continuous
2	<b>Prevent Water Pollution from Run-Off</b>	Ensure all gullies are maintained and regularly cleaned	Environmental Manager/ Operatives	Continuous	Continuous	Continuous
		Ensure that levels in trade effluent tanks are maintained at an appropriate height	Environmental Manager/Operatives	Continuous	Continuous	Continuous
3	<b>Assess &amp; Review Resource &amp; Energy Consumption at the site</b>	Carry out an energy audit on the site	Environmental Manager	May '11	Completed in '12	Sept '15
4	<b>Maintain and Develop the Environmental Management System</b>	Maintain EMS Documentation on site	Environmental Manager	Continuous	Continuous	Continuous
		Up date procedures to reflect operational and control changes				
5	<b>Assess Waste Acceptance Procedures so as to minimise volume of erratics</b>	Communicate with customers about the items that are not acceptable in the in-coming wastes	Call Centre/Sales Reps	Continuous	Continuous	Continuous
6	<b>Environmental Monitoring</b>	Implement the Environmental Monitoring Programme specified in the Waste Licence	Environmental Manager	Continuous	Continuous	Continuous
		Investigate any accidents of emission limit values	Environmental Manager	Continuous	Continuous	Continuous
7	<b>Ensure and implement a training programme</b>	Identify staff training requirements and provide relevant training	Environmental Dept	July '14	Completed in '14	Aug '15

No	Objective & Target	Method of Achievement	Responsibility	2014 Programme	Complete in 2014	2015 programme
8	<b>To control any emergencies that may arise at the facility</b>	Review and implement an Emergency Response Procedure	Environmental Manager	Aug '14	Completed in '14	Aug '15
9	<b>Prepare a Standard Operating Procedures Manual</b>	Review the SOP manual relevant to site operations	Environmental Dept	Aug '14	Completed in '14	Aug '15
10	<b>Ensure lighting in waste handling buildings provide sufficient lighting so as to assess incoming waste</b>	Clean all light bulbs and covers in waste handling buildings	Environmental Manager/ Yard Supervisor	July '14	Completed in '14	Sept '15
11	<b>Reduce dependence on using wastewater treatment plants for surface water</b>	Complete design of constructed wetland and seek Agency approval for its construction	Alan Friel	Dec '13	Reapplied for planning in '14	Construct in Q3 '14 pending EPA approval
12	<b>Complete shed 3 for RDF/SRF</b>	Awaiting Agency waste licence review	Environmental Manager	Lodged 2009	Ongoing	Expected in '15
13	<b>Office Recycling</b>	Continuation of office recycling	Office Manager/ Environmental Department	Continuous	Continuous	Continuous
14	<b>Pipe and USB Integrity Test</b>	Carry out a Pipe and Underground Storage Tank Integrity Test	Environmental Manager/Tanker Dept.	Aug '14	Dec '14	Aug '17
15	<b>Yard Sweeper</b>	Purchase Permanent yard sweeper for yard	Maintenance Dept	N/a	N/a	Q1 2015

### 3.1 Completion of Environmental Targets & Objectives 2014

Panda will endeavour to complete the targets not already completed in 2014. The targets not met in 2014, were due to the continued expansion of Panda’s waste recovery activities, such as reviewing the licence. The wetlands project required Nurendale to re-apply for planning permission for meath County Council. This planning permission has now been granted. These were delayed so that Panda could best plan to incorporate these new projects into the current facility.

### 3.2 Summary of reported incidents and complaints

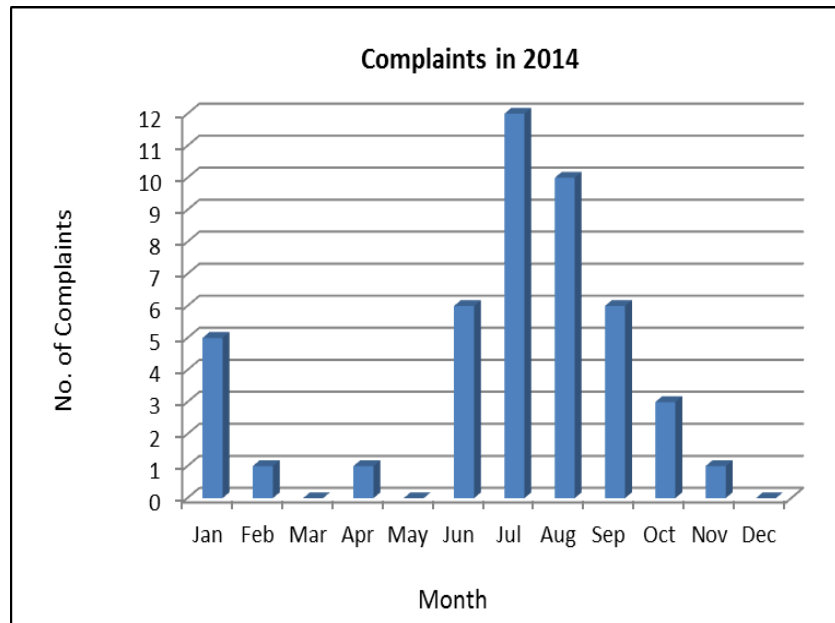
#### 3.2.1. Reported Incidents Summary

There was no incident in 2014.

#### 3.2.2 Complaints:

Fig. 8 illustrates complaints either made directly to the Agency or to Panda’s facility for each month during 2014. There were a total of 45 complaints made. All of these were thoroughly investigated and closed out in a timely fashion.

**Fig. 8: Complaints**



### 3.3 Review of nuisance controls

#### *3.3.1 Odour*

There is a mobile rotary atomiser-fogging unit for dust control in building 2 which also uses odour neutraliser in conjunction with the spray system. A sprinkling system is on each doorway into shed 1 and between the back-up weighbridge and commercial premise on the western boundary of the facility.

The yard foreman is responsible for controlling the odour-suppressing units. This involves controlling the concentration of odour neutraliser in order to provide adequate odour control. There is a power washer available to wash odorous bins. All drivers are responsible for washing their own compactors or skips. Each day, the environmental officer conducts an inspection of the site. A daily odour assessment of the biofilter is carried out and a record of this is filed in the environmental office.

#### *3.3.2 Noise*

There were four noise survey's done 2014. Noise levels from operations at Panda were inaudible as background noise from the N2 and the slip road to the north of the facility was the dominant source of noise. In general, the noise emissions were in the main steady, with no tonal or impulsive noise from the works audible at any of the nearest locations.

#### *3.3.3. Dust*

A road sweeper with spray bars is available for controlling dust outside the waste transfer station. Dust analysis was carried out four times this year at five locations. A dust suppression system was installed in Shed 2 in 2005 and along the western boundary between the back-up weighbridge and the commercial premise in 2008.

#### *3.3.4. Vermin*

A file on vermin control is maintained in the environmental office. A sub-contractor is used to control any vermin on site.

#### *3.3.5. Flies*

Good housekeeping practices are used to prevent fly infestations. The yard is kept clean using a road sweeper 10 hours a day and all waste for disposal is removed from the facility within 48 hours, or 72 hours in the case of a bank holiday weekends. Fly treatment is carried out during the summer months.

#### *3.3.6. Birds*

In order to avoid having birds as a nuisance, litter control is practised at all times and no waste is stored outside.

#### *3.3.7. Litter*

A designated member of staff carries out litter inspections of the facility twice daily and gathers any litter on site.

### **4.0 Development of Procedures on Site**

The Emergency Response Procedure (ERP) was reviewed and amended to reflect the changes of the company and update useful contact telephone numbers.

A review of all site procedures was carried out; no new SOP's were developed in 2014.

### **5.0 Pollution Emission Register**

After consulting the PERL list Panda are not using any substance that is listed at present.



## 6.0 Report on Programme for Public Information

Panda have re-developed their website in 2010; one of the features is an Environmental page where the following can be downloaded,

- Facility licences (W0140-03, W0261-01, W0263-01, W0039-02, W0238-02 and W0003-03)
- Multi-regional Waste collection permit (WCP-DC-09-1188-01),
- Environmental Policy,

Domestic wheelie bin customers can also download their relevant collection calendar and pay bills.

Panda have a news section on the website, with regular updates on collections, offers, etc.

Over the Christmas period 2014 Panda put advertisements in all the local newspapers to inform customers of the schedule of bin collections over the Christmas Period. Panda also issued all domestic customers with a Christmas calendar showing collection days over that period. If there were any change to a domestic route, this would also be advertised in the local media.

In March 2009, Panda commenced SMS messaging to domestic customers regarding their collections. Panda are also encouraging customers to receive email invoicing, thereby reducing dependence on paper invoices and envelopes.

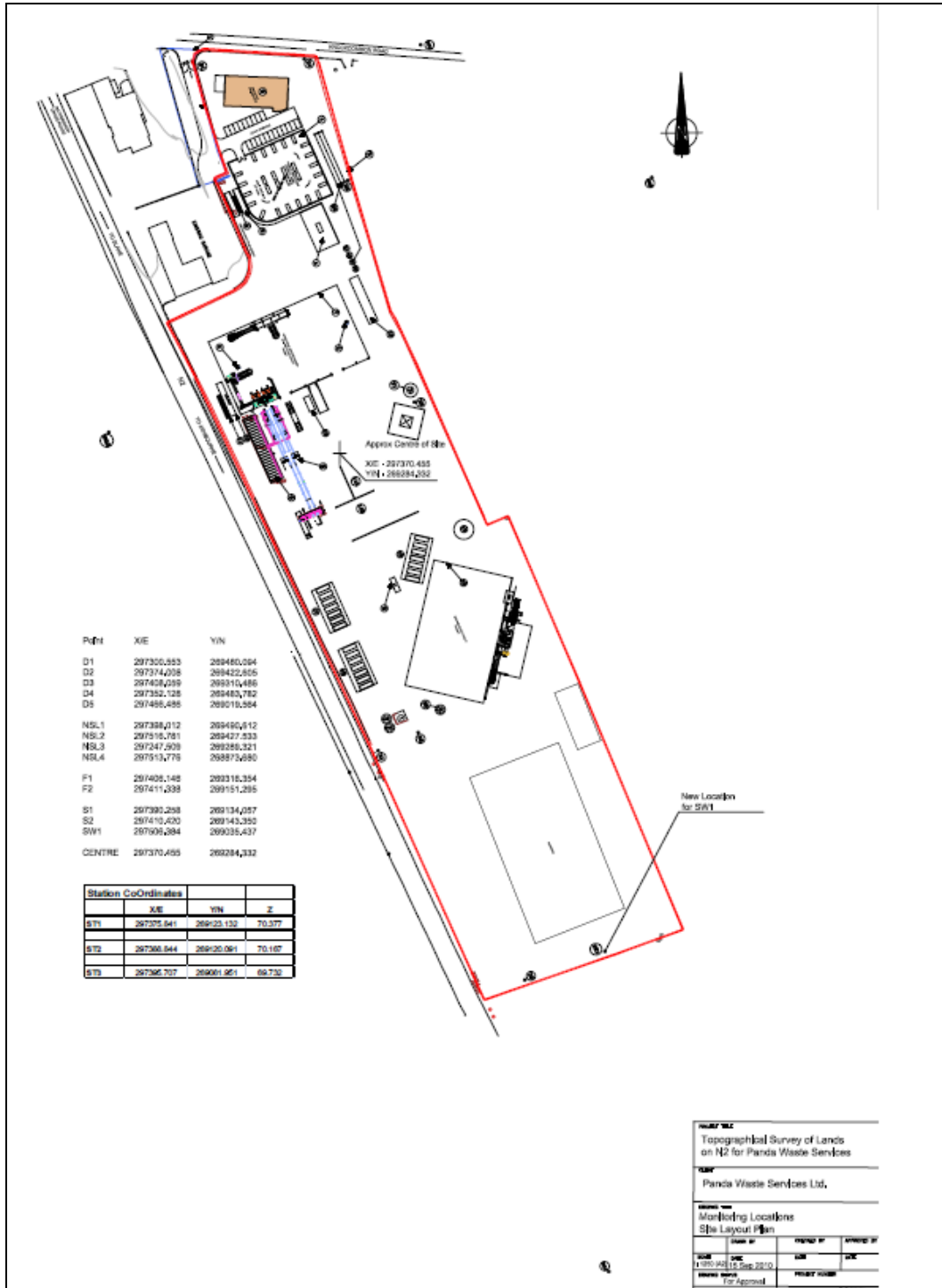
Recycling certificates are issued to customers, on request, so that they can determine their recycling on a weekly/monthly or annual basis.

Advertisements are taken out regularly in the local newspapers informing customers of the services that Panda offer. There is also a large advertisement in the golden pages, which is available to the general public. Tours of the facilities are given to schools and to members of the public upon request. During the reporting period there were no requests from members of the public to inspect any Environmental Records.

The information in the Annual Environmental Report is true and accurate representation of the activities conducted by Panda in 2014.

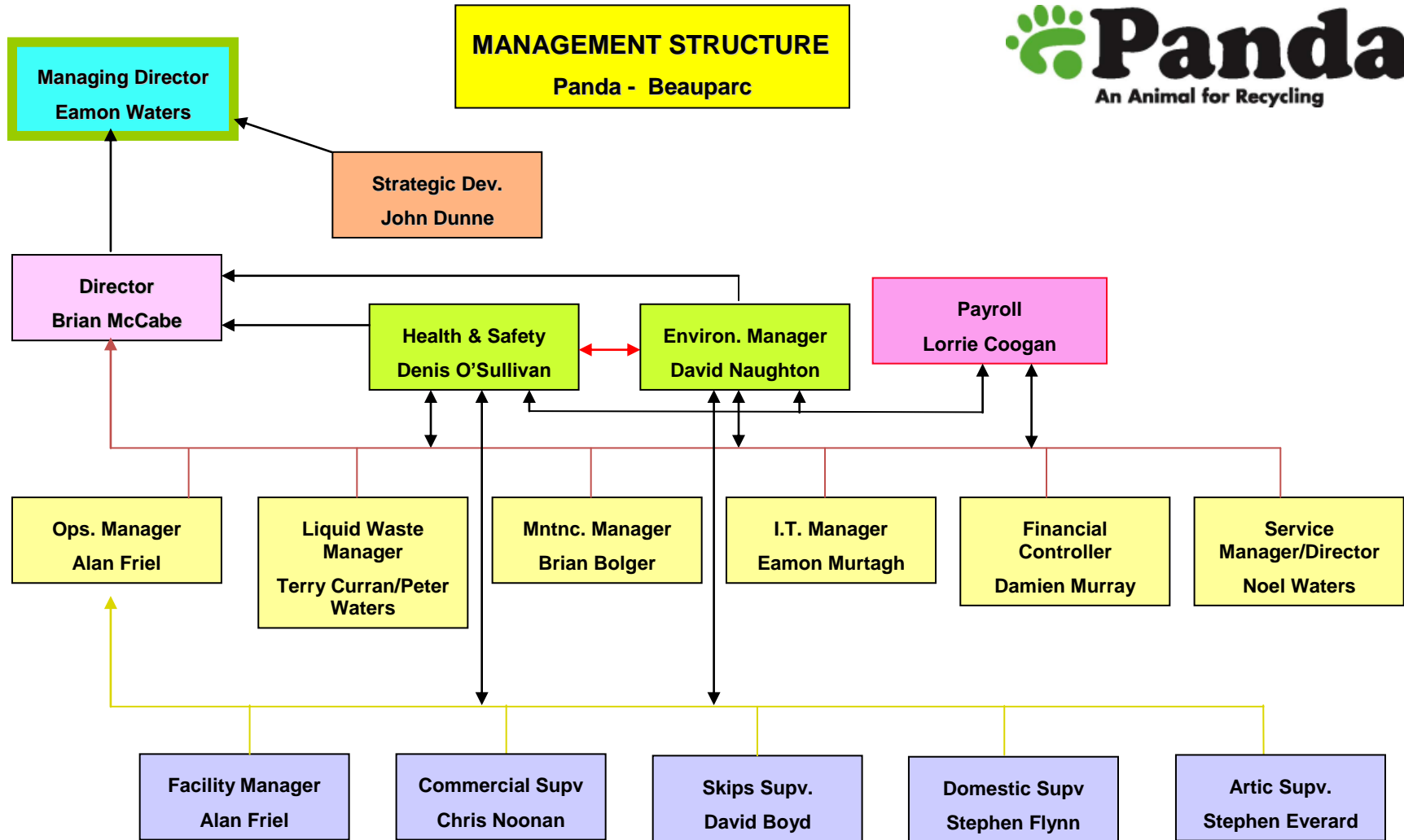
# Appendix A

## Site Layout



# Appendix B

## Organisation Chart



# Appendix C

## Financial Statement



Fagan Lynch Donnellan  
Chartered Accountants & Registered Auditors

Our Ref: VL/NMcK

18<sup>th</sup> March 2015

Environmental Protection Agency,  
McCumiskey House,  
Richview,  
Clonskeagh Road,  
Dublin 14.

**Re: Nurendale Ltd T/A Panda Waste**

Dear Sir,

We act as Auditors and Taxation Agents for the above and have acted in this capacity in excess of 10 years.

We wish to confirm as follows:

1. Statutory Accounts have been filed for all years up to 31.12.2013 with the Companies Office.

Accounts and Tax Returns have also been filed with Inspector of Taxes for all years to 31<sup>st</sup> December 2013.

2. The Company trades profitably and is on a very sound financial footing.

If you have any queries, please do not hesitate to contact us.

Yours faithfully,

  
FAGAN LYNCH DONNELLAN

Newbridge House, Athlumney, Navan, Co. Meath  
Tel: (046) 9033700 Fax: (046) 9029341 e-mail: info@fld.ie www.fld.ie

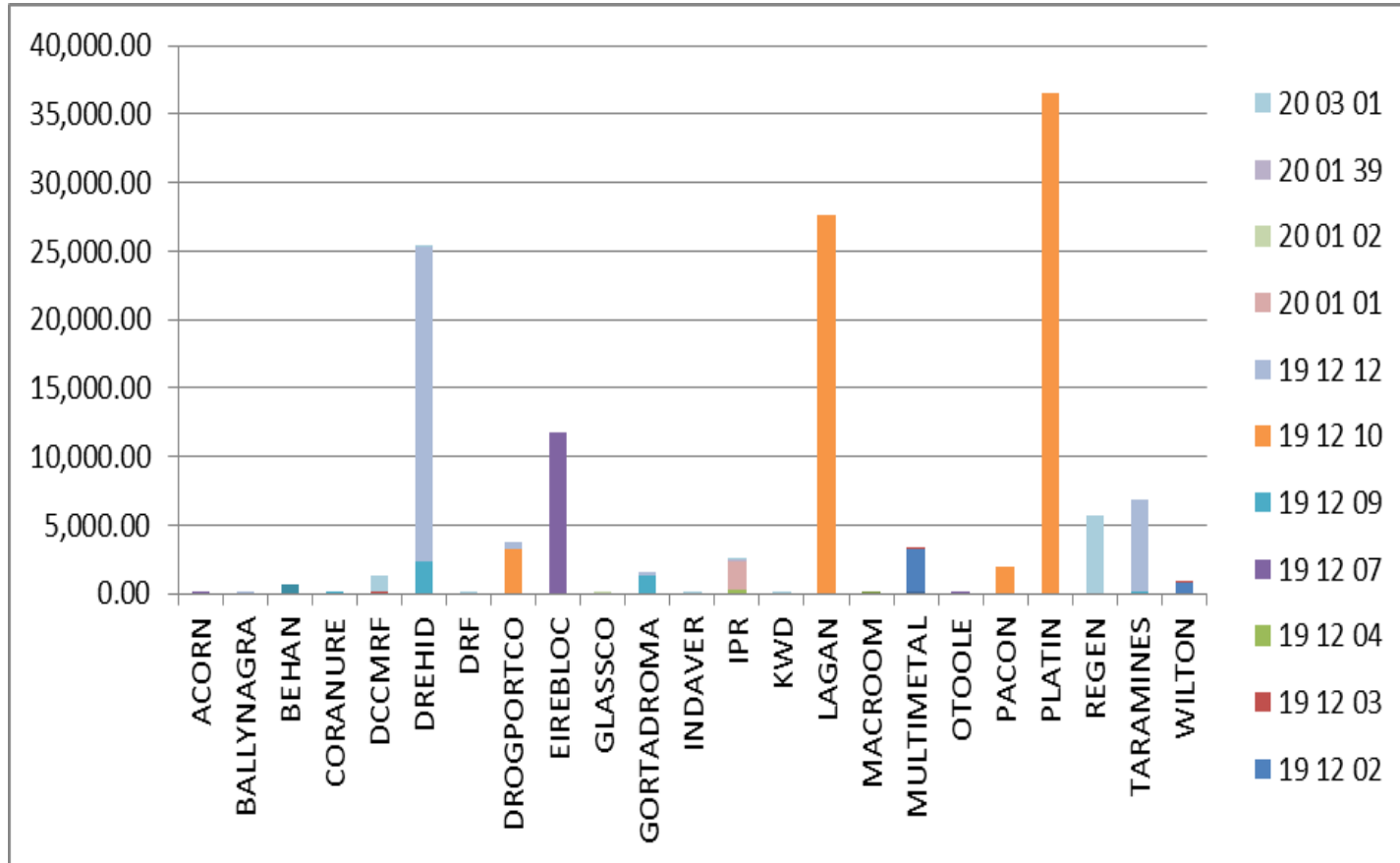
John Fagan FCA Vincent Lynch FCA Mark McCartney FCCA

Registered to carry on audit work and authorised to carry on investment business by the Institute of Chartered Accountants in Ireland (ICAI).  
Chartered Accountants Ireland is the operating name of ICAI.



# Appendix D

## Outgoing by Destination



# Appendix E

## PRTR Emissions



Return Year: 2014

[Guidance to completing the PRTR workbook](#)

### AER Returns Workbook

Version 1.1.18

<b>REFERENCE YEAR</b>	2014
-----------------------	------

#### 1. FACILITY IDENTIFICATION

Parent Company Name	Nurendale
Facility Name	Nurendale (Rathdrinagh)
PRTR Identification Number	W0140
Licence Number	W0140-03

Classes of Activity

No.	class_name
-	Refer to PRTR class activities below

Address 1	Rathdrinagh
Address 2	Beauparc
Address 3	Navan
Address 4	
	Meath
Country	Ireland
Coordinates of Location	-8.13924 52.5351
River Basin District	IEEA
NACE Code	3832
Main Economic Activity	Recovery of sorted materials
<b>AER Returns Contact Name</b>	David Naughton
<b>AER Returns Contact Email Address</b>	david.naughton@nurendale.ie
<b>AER Returns Contact Position</b>	Environmental Officer
<b>AER Returns Contact Telephone Number</b>	086 6045905
<b>Returns Contact Mobile Phone Number</b>	086 6045905
<b>AER Returns Contact Fax Number</b>	046 9024189
<b>Production Volume</b>	0.0
<b>Production Volume Units</b>	
<b>Number of Installations</b>	0
<b>Number of Operating Hours in Year</b>	0
<b>Number of Employees</b>	80
<b>User Feedback/Comments</b>	
<b>Web Address</b>	www.panda.ie

#### 2. PRTR CLASS ACTIVITIES

Activity Number	Activity Name
50.1	General
5(c)	Installations for the disposal of non-hazardous waste
50.1	General

#### 3. SOLVENTS REGULATIONS (S.I. No. 543 of 2002)

Is it applicable?	No
Have you been granted an exemption?	No
If applicable which activity class applies (as per Schedule 2 of the regulations)?	
Is the reduction scheme compliance route being used?	

#### 4. WASTE IMPORTED/ACCEPTED ON

[Guidance on waste imported/accepted onto site](#)

Do you import/accept waste onto your site for on-site treatment (either recovery or disposal activities)?	No
---	----

**4.1 RELEASES TO AIR** [Link to previous years emissions data](#) | IPRTR#: W0140 | Facility Name: Nurendale (Rathdrinagh) | Filename: PRTR.xls | Return Year: 2014 | 30/03/2015 15:00

**SECTION A : SECTOR SPECIFIC PRTR POLLUTANTS** **RELEASES TO AIR** *Please enter all quantities in this section in KGs*

No. Annex II	POLLUTANT Name	M/C/E	METHOD		ADD EMISSION POINT			QUANTITY		
			Method Code	Designation or Description	Emission Point 1	T (Total) KG/Year	A (Accidental) KG/Year	F (Fugitive) KG/Year		
						0.0	0.0	0.0	0.0	0.0

**SECTION B : REMAINING PRTR POLLUTANTS** **RELEASES TO AIR** *Please enter all quantities in this section in KGs*

No. Annex II	POLLUTANT Name	M/C/E	METHOD		ADD EMISSION POINT			QUANTITY		
			Method Code	Designation or Description	Emission Point 1	T (Total) KG/Year	A (Accidental) KG/Year	F (Fugitive) KG/Year		
						0.0	0.0	0.0	0.0	0.0

**SECTION C : REMAINING POLLUTANT EMISSIONS (As required in your Licence)** **RELEASES TO AIR** *Please enter all quantities in this section in KGs*

Pollutant No.	Dust	Name	M/C/E	METHOD		ADD EMISSION POINT					QUANTITY							
				Method Code	Designation or Description	DS1	DS2	DS3	DS4	DS5	T (Total) KG/Year	A (Accidental) KG/Year	F (Fugitive) KG/Year					
210			M	ALT	Gravimetry	Emission Point 1	Emission Point 2	Emission Point 3	Emission Point 4	Emission Point 5	0.03	0.03	0.02	0.06	0.02	0.16	0.0	0.0

**Additional Data Requested from Landfill operators**

For the purposes of the National Inventory on Greenhouse Gases, landfill operators are requested to provide summary data on landfill gas (LFG) stored or utilized on their facilities to accompany the figures for total methane generated. Operators should only report their Net methane (CNG) emissions in the environmental under T (Total) KG/yr for Section B: Sector specific PRTR pollutants above. Please complete the table below:

**Landfill:** Nurendale (Rathdrinagh)

Please enter summary data on the quantity of methane stored and/or utilized

T (Total) kg/Year	M/C/E	Method Used		Capacity m3 per hour
		Method Code	Designation or Description	
Total estimated methane generation (as per site model)	0.0			N/A
Methane Flared	0.0			0.0 (Total Flaring Capacity)
Methane utilized in on-site	0.0			0.0 (Total Utilising Capacity)
Net methane emission (as reported in Section A above)	0.0			N/A

**4.2 RELEASES TO WATERS** [Link to previous years emissions data](#) | IPRTR#: W0140 | Facility Name: Nurendale (Rathdrinagh) | Filename: PRTR.xls | Return Year: 2014 | 30/03/2015 15:00

**SECTION A : SECTOR SPECIFIC PRTR POLLUTANTS** **RELEASES TO WATERS** *Data on ambient monitoring of storm/surface water or groundwater, conducted as part of your licence requirements, should NOT be submitted. Please enter all quantities in this section in KGs*

No. Annex II	POLLUTANT Name	M/C/E	METHOD		ADD EMISSION POINT			QUANTITY		
			Method Code	Designation or Description	Emission Point 1	T (Total) KG/Year	A (Accidental)	F (Fugitive)		
						0.0	0.0	0.0	0.0	0.0

**SECTION B : REMAINING PRTR POLLUTANTS** **RELEASES TO WATERS** *Please enter all quantities in this section in KGs*

No. Annex II	POLLUTANT Name	M/C/E	METHOD		ADD EMISSION POINT			QUANTITY		
			Method Code	Designation or Description	Emission Point 1	T (Total) KG/Year	A (Accidental)	F (Fugitive)		
						0.0	0.0	0.0	0.0	0.0

**SECTION C : REMAINING POLLUTANT EMISSIONS (as required in your Licence)** **RELEASES TO WATERS** *Please enter all quantities in this section in KGs*

Pollutant No.	Name	M/C/E	METHOD		ADD EMISSION POINT			QUANTITY		
			Method Code	Designation or Description	Emission Point 1	T (Total) KG/Year	A (Accidental)	F (Fugitive)		
						0.0	0.0	0.0	0.0	0.0



4.3 RELEASES TO WASTEWATER OR SEWER [Link to previous years emissions data](#) | PRTR#: W01401 | Facility Name: Nurendale (Rathdrinagh) | Filename: PRTR.xls | Return Year: 2014 | 30/03/2015 15:00

**SECTION A : PRTR POLLUTANTS**

**OFFSITE TRANSFER OF POLLUTANTS DESTINED FOR WASTE-WATER TREATMENT OR SEWER** Please enter all quantities in this section in KGs

POLLUTANT		METHOD			ADD EMISSION POINT			
No. Annex II	Name	M/C/E	Method Code	Designation or Description	Emission Point 1	T (Total) KG/Year	A (Accidental) KG/Year	F (Fugitive) KG/Year
06	Ammonia (NH3)	M	ALT	Colorimetry	180.23	180.23	0.0	0.0
17	Arsenic and compounds (as As)	M	ALT	ICPMS	0.05	0.05	0.0	0.0
18	Cadmium and compounds (as Cd)	M	ALT	ICPMS	0.01	0.01	0.0	0.0
79	Chlorides (as Cl)	M	ALT	Colorimetry	1079.7	1079.7	0.0	0.0
19	Chromium and compounds (as Cr)	M	ALT	ICPMS	0.17	0.17	0.0	0.0
20	Copper and compounds (as Cu)	M	ALT	ICPMS	0.47	0.47	0.0	0.0
23	Lead and compounds (as Pb)	M	ALT	ICPMS	0.78	0.78	0.0	0.0
21	Mercury and compounds (as Hg)	M	ALT	ICPMS	0.0	0.0	0.0	0.0
22	Nickel and compounds (as Ni)	M	ALT	ICPMS	0.36	0.36	0.0	0.0
24	<b>Zinc and compounds (as Zn)</b>	M	ALT	ICPMS	10.61	10.61	0.0	0.0

ADD NEW ROW | DELETE ROW \* | \* Select a row by double-clicking on the Pollutant Name (Column B) then click the delete button

**SECTION B : REMAINING POLLUTANT EMISSIONS (as required in your Licence)**

**OFFSITE TRANSFER OF POLLUTANTS DESTINED FOR WASTE-WATER TREATMENT OR SEWER** Please enter all quantities in this section in KGs

POLLUTANT		METHOD			ADD EMISSION POINT			
Pollutant No.	Name	M/C/E	Method Code	Designation or Description	Emission Point 1	T (Total) KG/Year	A (Accidental) KG/Year	F (Fugitive) KG/Year
303	BOD	M	ALT	Electrometry	5767.71	5767.71	0.0	0.0
374	Boron	M	ALT	ICPMS	1.97	1.97	0.0	0.0
306	COD	M	ALT	Colorimetry	12177.79	12177.79	0.0	0.0
324	Mineral oils	M	SSC	GC-FID	10.2	10.2	0.0	0.0
370	Selenium	M	ALT	ICPMS	0.01	0.01	0.0	0.0
240	Suspended Solids	M	ALT	Filtration/Drying@104C	18184.68	18184.68	0.0	0.0
343	Sulphate	M	ALT	Colorimetry	2352.88	2352.88	0.0	0.0

4.4 RELEASES TO LAND [Link to previous years emissions data](#) | PRTR#: W0140 | Facility Name: Nurendale (Rathdrinagh) | Filename: PRTR.xls | Return Year: 2014 | 30/03/2015 15:00

**SECTION A : PRTR POLLUTANTS**

**RELEASES TO LAND** Please enter all quantities in this section in KGs

POLLUTANT		METHOD			ADD EMISSION POINT			
No. Annex II	Name	M/C/E	Method Code	Designation or Description	Emission Point 1	T (Total) KG/Year	A (Accidental)	F (Fugitive)
						0.0	0.0	0.0

ADD NEW ROW | DELETE ROW \* | \* Select a row by double-clicking on the Pollutant Name (Column B) then click the delete button

**SECTION B : REMAINING POLLUTANT EMISSIONS (as required in your Licence)**

**RELEASES TO LAND** Please enter all quantities in this section in KGs

POLLUTANT		METHOD			ADD EMISSION POINT			
Pollutant No.	Name	M/C/E	Method Code	Designation or Description	Emission Point 1	T (Total) KG/Year	A (Accidental)	F (Fugitive)
						0.0	0.0	0.0

5. ONSITE TREATMENT & OFFSITE TRANSFERS OF WASTE (IPRTFR: W01401 Facility Name: Nurendale (Rathdrinegh) | Filename: PRTR.tbl | Return Year: 2014)

20/03/2015 15:01

Please enter all quantities on this sheet in Tonnes

Transfer Destination	European Waste Code	Hazardous	Quantity (Tonnes per Year)	Description of Waste	Waste Treatment Operation	Method Used		Location of Treatment	HazWaste: Name and Licence/Permit No of Next Destination Facility Non-Haz Waste: Name and Licence/Permit No of Recover/Disposal	HazWaste: Address of Next Destination Facility Non-Haz Waste: Address of Recover/Disposal	Name and Licence/Permit No. and Address of Final Recover/Disposal (HAZARDOUS WASTE ONLY)	Actual Address of Final Destination i.e. Final Recovery/Disposal Site (HAZARDOUS WASTE ONLY)
						M/C/E	Method Used					
Within the Country	15 01 01	No		paper and cardboard packaging	R12	M	weighed	Offsite in Ireland	Irish Packaging Recycling Ltd, W0263-01	Ballymount Road, Walkinstown, Dublin 12, Ireland		
Within the Country	15 01 04	No	86.02	metallic packaging	R12	M	weighed	Offsite in Ireland	Multimetals, WFP-W/W-09-0014-01	Conway Port Industrial Estate, Bollarney, Murrough Co., Wicklow, Ireland		
Within the Country	15 01 04	No		metallic packaging	R12	M	weighed	Offsite in Ireland	Wilton Waste, WFP-CN-10-0005-01(1)	Kiffagh, Crosserlough, Ballyjamesduff, Co. Cavan, Ireland		
Within the Country	16 01 03	No	23.32	end-of-life tyres	R12	M	weighed	Offsite in Ireland	Irish Packaging Recycling Ltd, W0263-01	Road, Walkinstown, Dublin 12, Ireland		
Within the Country	16 01 03	No		end-of-life tyres	R13	M	weighed	Offsite in Ireland	Farmers, N/A	....., Ireland		
Within the Country	16 05 05	No	0.76	gases in pressure containers other than those mentioned in 16 05 04	R13	M	weighed	Offsite in Ireland	Calor Gas,	....., Ireland		
Within the Country	17 01 07	No	26.88	mixture of concrete, bricks, tiles and ceramics other than those mentioned in 17 01 06	R10	M	weighed	Offsite in Ireland	Behan Land Restoration Ltd, W0247-01	Blackhall, Punchestown, Naas, Co. Kildare, Ireland		
Within the Country	17 05 04	No	652.5	soil and stones other than those mentioned in 17 05 03	R10	M	weighed	Offsite in Ireland	Behan Land Restoration Ltd, W0247-01	Blackhall, Punchestown, Naas, Co. Kildare, Ireland		
Within the Country	17 05 04	No	18.1	soil and stones other than those mentioned in 17 05 03	R13	M	weighed	Offsite in Ireland	Nurendale, W0261-01	Road, Finglas, Dublin 11, Ireland		
To Other Countries	17 08 02	No	12.16	gypsum-based construction materials other than those mentioned in 17 08 01	R12	M	weighed	Abroad	Nurendale, W0261-01	Road, Finglas, Dublin 11, Ireland		
Within the Country	17 09 04	No		mixed construction and demolition wastes other than those mentioned in 17 09 01, 17 09 02 and 17 09 03	R12	M	weighed	Offsite in Ireland	Barnmore Demolition, WPT 129	21A, Baldogle Industrial Estate, Baldogle, Dublin 13, Ireland		
Within the Country	17 09 04	No		mixed construction and demolition wastes other than those mentioned in 17 09 01, 17 09 02 and 17 09 03	R12	M	weighed	Offsite in Ireland	AES Navan, W0131	Navan, Co. Meath, Ireland		
Within the Country	19 12 02	No	3136.87	ferrous metal	R12	M	weighed	Offsite in Ireland	Multimetals, WFP-W/W-09-0014-01	Conway Port Industrial Estate, Bollarney, Murrough Co., Wicklow, Ireland		
Within the Country	19 12 02	No		ferrous metal	R13	M	weighed	Offsite in Ireland	Panda Cappagh, W0261-01	Road, Finglas, Dublin 11, Ireland		
Within the Country	19 12 02	No	813.76	ferrous metal	R12	M	weighed	Offsite in Ireland	Wilton Waste, WFP-CN-10-0005-01(1)	Kiffagh, Crosserlough, Ballyjamesduff, Co. Cavan, Ireland		
Within the Country	19 12 03	No	22.42	non-ferrous metal	R12	M	weighed	Offsite in Ireland	Multimetals, WFP-W/W-09-0014-01	Conway Port Industrial Estate, Bollarney, Murrough Co., Wicklow, Ireland		
Within the Country	19 12 03	No	146.98	non-ferrous metal	R12	M	weighed	Offsite in Ireland	Dublin Regional Recovery Facility, W0238-01	Merrywell Industrial Estate, Ballymount Road Lower, Ballymount Dublin 12, Ireland		
Within the Country	19 12 03	No	89.26	non-ferrous metal	R12	M	weighed	Offsite in Ireland	Wilton Waste, WFP-CN-10-0005-01(1)	Kiffagh, Crosserlough, Ballyjamesduff, Co. Cavan, Ireland		
Within the Country	19 12 04	No	225.9	plastic	R12	M	weighed	Offsite in Ireland	Irish Packaging Recycling Ltd, W0263-01	Road, Walkinstown, Dublin 12, Ireland		
Within the Country	19 12 04	No		plastic and rubber	R12	M	weighed	Offsite in Ireland	Polymer Recovery Ltd, WFP-W/W-12-0030-01	The Murrough, Wicklow, Co. Wicklow, Ireland		

Within the Country	19 12 04	No	plastic and rubber	R12	M	Weighted	Offsite in Ireland	Wheeley Environmental Refuse Services,WFP-G-09-0002-01	Weir Road Business Park,Weir Road,Tuam,Co. Galway,Ireland
Within the Country	19 12 07	No	11752.27 wood other than that mentioned in 19 12 06	R12	M	Weighted	Offsite in Ireland	Eirebloo,Ck(S) 503/07	Lissarda,Co. Cork,....Ireland
Within the Country	19 12 07	No	12.24 wood other than that mentioned in 19 12 06	R13	M	Weighted	Offsite in Ireland	O'Toole Composting,WFP-CW-10-0003-01	Ballintrae,Co. Carlow,....Ireland
Within the Country	19 12 07	No	wood other than that mentioned in 19 12 06	R10	M	Weighted	Offsite in Ireland	Knockharley Landfill,W0146-02	Knockharley,Navan,Co. Meath,....Ireland
Within the Country	19 12 07	No	wood other than that mentioned in 19 12 06	R12	M	Weighted	Offsite in Ireland	Thornton's Recycling,WFP-KE-10-0061-01	Oldmilltown ,Kill,Co. Kildare,....Ireland
Within the Country	19 12 07	No	wood other than that mentioned in 19 12 06	R13	M	Weighted	Offsite in Ireland	Whiteriver Landfill,W0060-02	Dunleer,Co. Louth,....Ireland
Within the Country	19 12 07	No	wood other than that mentioned in 19 12 06	R12	M	Weighted	Offsite in Ireland	Clonmel Waste Disposal,WFP-TS-11-0001-01	Lawlesstown,Clonmel,Co. Tipperary,....Ireland
Within the Country	19 12 07	No	42.34 wood other than that mentioned in 19 12 06	R13	M	Weighted	Offsite in Ireland	Acorn Recycling Ltd,W0249-01	Ballybeg,Littleton,Co. Tipperary,....Ireland
Within the Country	19 12 07	No	wood other than that mentioned in 19 12 06	R12	M	Weighted	Offsite in Ireland	Monaghan County Council,W0020-01	Scotchcorner Landfill,Letterbane,Anngalla, Castleblayney Co. Monaghan,Ireland
Within the Country	19 12 09	No	minerals (for example sand, stones)	R10	M	Weighted	Offsite in Ireland	Knockharley Landfill,W0146-02	Knockharley,Navan,Co. Meath,....Ireland
Within the Country	19 12 09	No	Rubble	R10	M	Weighted	Offsite in Ireland	Whiteriver Landfill,W0060-02	Dunleer,Co. Louth,....Ireland
Within the Country	19 12 09	No	minerals (for example sand, stones)	R13	M	Weighted	Offsite in Ireland	Arthurstown Landfill,W0004-04	Arthurstown ,Kill,Co. Kildare,....Ireland
Within the Country	19 12 09	No	2269.42 minerals (for example sand, stones)	R13	M	Weighted	Offsite in Ireland	Bord na Mona Drehid Landfill,W0201-03	Killinagh Upper,Carbury,Co. Kildare,....Ireland
Within the Country	19 12 09	No	minerals (for example sand, stones)	R13	M	Weighted	Offsite in Ireland	AES Navan,W0131	Navan,Co. Meath,....Ireland
Within the Country	19 12 09	No	minerals (for example sand, stones)	R12	M	Weighted	Offsite in Ireland	Barnmore Demolition,WPT 129	21A Baldogle Industrial Estate,Baldogle,Dublin 13,....Ireland
Within the Country	19 12 09	No	minerals (for example sand, stones)	R13	M	Weighted	Offsite in Ireland	Panda Ballymount,W0039-02	Ballymount Cross,Tallaght,Dublin 24,....Ireland
Within the Country	19 12 09	No	minerals (for example sand, stones)	R13	M	Weighted	Offsite in Ireland	Whiteriver Landfill,W0060-02	Dunleer,Co. Louth,....Ireland
Within the Country	19 12 09	No	minerals (for example sand, stones)	R12	M	Weighted	Offsite in Ireland	Enrich ,WFP-MH-08-0004-02	Newtownrathganley,Kilcock ,Co. Meath,....Ireland
Within the Country	19 12 09	No	End of Waste rubble	R13	M	Weighted	Offsite in Ireland	Farmers,N/a	.....Ireland Cappagh Road,Finglas,Dublin 11,....Ireland
Within the Country	19 12 09	No	minerals (for example sand, stones)	R13	M	Weighted	Offsite in Ireland	Nurendale,W0261-01	Gortadroma Landfill,Ballynahill,Co. Limerick,....Ireland
Within the Country	19 12 09	No	1247.16 minerals (for example sand, stones)	R13	M	Weighted	Offsite in Ireland	Limerick County Council,W0017-04	Scotchcorner Landfill,Letterbane,Anngalla, Castleblayney Co. Monaghan,Ireland
Within the Country	19 12 09	No	minerals (for example sand, stones)	R13	M	Weighted	Offsite in Ireland	Monaghan County Council,W0020-01	Ballymount Cross,Tallaght,Dublin 24,....Ireland
Within the Country	19 12 09	No	minerals (for example sand, stones)	R13	M	Weighted	Offsite in Ireland	Nurendale,W0039-02	Crag Avenue,Clondalkin Industrial Estate,Condalkin Co Dublin,....Ireland
Within the Country	19 12 10	No	combustible waste (refuse derived fuel)	R12	M	Weighted	Offsite in Ireland	Greyhound,W0205-01	Killaskillen,Kinnegad,Co. Meath,....Ireland
Within the Country	19 12 10	No	27692.7 combustibile waste (refuse derived fuel)	R1	M	Weighted	Offsite in Ireland	Lagan Cement ,P0487-05	Tom Roes Point Facility,Balragh Road,Drogheda,Co. Louth,Ireland
Within the Country	19 12 10	No	3280.72 combustibile waste (refuse derived fuel)	R13	M	Weighted	Offsite in Ireland	Drogheda Port Co.,WFP-LH-11-0006-01	Louth,Ireland

Within the Country	19 12 10	No	36588.11	combustible waste (refuse derived fuel)	R1	M	weighed	Offsite in Ireland	Irish Cement,P0030	Platin,Drogheda,Co. Meath,,Ireland
Within the Country	19 12 10	No		combustible waste (refuse derived fuel)	R12	M	weighed	Offsite in Ireland	South Dublin Baling Station,W0003	Ballymount Baling Station,Ballymount Road,Walkinstown,Dublin 12,Ireland
Within the Country	19 12 10	No		combustible waste (refuse derived fuel)	R13	M	weighed	Offsite in Ireland	Panda Ballymount,W0039-02	Ballymount Cross,Tallaght,Dublin 24,,Ireland
To Other Countries	19 12 10	No	1977.06	combustible waste (refuse derived fuel)	R1	M	weighed	Abroad	Pacon,WFP-FG-14-0001-01	Stephenstown Business Park,Balbriggan,Co. Dublin ,,Ireland
Within the Country	19 12 10	No		combustible waste (refuse derived fuel)	R1	M	weighed	Offsite in Ireland	Nurendale,W0039-02	Ballymount Cross,Tallaght,Dublin 24,,Ireland
Within the Country	19 12 12	No		other wastes (including mixtures of materials) from mechanical treatment of wastes other than those mentioned in 19 12 11	R12	M	weighed	Offsite in Ireland	Greyhound,W0205-01	Crag Avenue,Clondalkin Industrial Estate,Condalkin Co Dublin,,Ireland
Within the Country	19 12 12	No	18.74	11 other wastes (including mixtures of materials) from mechanical treatment of wastes other than those mentioned in 19 12 11	R1	M	weighed	Offsite in Ireland	Regen,44110	Shepherds Drive,Carnbane Industrial Estate,Newry Co. Down,BT35 6JQ,Ireland
Within the Country	19 12 12	No		11 other wastes (including mixtures of materials) from mechanical treatment of wastes other than those mentioned in 19 12 11	R12	M	weighed	Offsite in Ireland	Padraig Thornton Waste Disposal Ltd,W0044	Killeen Road,Ballyfermot,Dublin 10,,Ireland
Within the Country	19 12 12	No		11 other wastes (including mixtures of materials) from mechanical treatment of wastes other than those mentioned in 19 12 11	R13	M	weighed	Offsite in Ireland	Panda Ballymount,W0039-02	Ballymount Cross,Tallaght,Dublin 24,,Ireland
Within the Country	19 12 12	No		11 other wastes (including mixtures of materials) from mechanical treatment of wastes other than those mentioned in 19 12 11	R12	M	weighed	Offsite in Ireland	Wiser,.	Middleton,Co. Cork,,Ireland
Within the Country	19 12 12	No	419.08	11 other wastes (including mixtures of materials) from mechanical treatment of wastes other than those mentioned in 19 12 11	R13	M	weighed	Offsite in Ireland	Drogheda Port Co.,WFP-LH-11-0006-01	Tom Roes Point Facility,Balragh Road,Drogheda,Co. Louth,Ireland
Within the Country	20 01 01	No	2051.42	paper and cardboard	R12	M	weighed	Offsite in Ireland	Irish Packaging Recycling Ltd,W0263-01	Ballymount Road,Walkinstown,Dublin 12,,Ireland
Within the Country	20 01 08	No		biodegradable kitchen and canteen waste	R13	M	weighed	Offsite in Ireland	Nurendale,W0039-02	Ballymount Cross,Tallaght,Dublin 24,,Ireland
Within the Country	20 01 25	No		edible oil and fat	R3	M	weighed	Offsite in Ireland	Slane Farm Oils,WFP-MH-10-0005-01	Ballymount Road,Walkinstown,Dublin 12,,Ireland
Within the Country	20 01 39	No	63.5	plastics	R12	M	weighed	Offsite in Ireland	Irish Packaging Recycling Ltd,W0263-01	Cappagh Road,Finglas,Dublin 11,,Ireland
Within the Country	20 01 39	No		plastics	R12	M	weighed	Offsite in Ireland	Nurendale,W0261-01	Ballymount Cross,Tallaght,Dublin 24,,Ireland
Within the Country	20 02 01	No		biodegradable waste	R13	M	weighed	Offsite in Ireland	Nurendale,W0039-02	Ballymount Cross,Tallaght,Dublin 24,,Ireland
Within the Country	20 03 01	No		mixed municipal waste	D1	M	weighed	Offsite in Ireland	Ballealy Landfill,W0009-03	Ballealy Landfill,Lusk,Co. Dublin,,Ireland
Within the Country	20 03 01	No	1128.8	Dry Recyclables	R12	M	weighed	Offsite in Ireland	Dublin Regional Recovery Facility,W0238-01	Merrywell Industrial Estate,Ballymount Road Lower,Ballymount Dublin 12,,Ireland
Within the Country	20 03 01	No	75.6	Dry Recyclables	R12	M	weighed	Offsite in Ireland	Killarney Waste Disposal,W0217-01	Aughacurreen,Killarney,Co. Kerry,,Ireland
Within the Country	20 03 01	No	134.92	mixed municipal waste	D1	M	weighed	Offsite in Ireland	Bord na Mona Drehid Landfill,W0201-03	Killinagh Upper,Carbury,Co. Kildare,,Ireland

Within the Country	20 03 01	No	Dry Recyclables	R12	M	weighed	Offsite in Ireland	Greyhound,w0205-01	Crag Avenue,Clondalkin Industrial Estate,Condalkin Co Dublin,,Ireland
Within the Country	20 03 01	No	46.8 mixed municipal waste	R1	M	weighed	Offsite in Ireland	Indaver,w0167-02	Carranstown,Duleek,Co. Meath,,Ireland
Within the Country	20 03 01	No	mixed municipal waste	D1	M	weighed	Offsite in Ireland	Knockharley Landfill,w0146-02	Knockharley,Navan,Co. Meath,,Ireland
To Other Countries	20 03 01	No	5645.04 Dry Recyclables	R12	M	weighed	Abroad	Regen,44110	Shepherds Drive,Carnbane Industrial Estate,Newry Co. Down,BT35 6JQ,Ireland
Within the Country	20 03 01	No	mixed municipal waste	R13	M	weighed	Offsite in Ireland	Panda Ballymount,w0039-02	Cross,Tallaght,Dublin 24,,Ireland
Within the Country	20 03 01	No	mixed municipal waste	D1	M	weighed	Offsite in Ireland	Whiteriver Landfill,w0060-02	Dunleer,Co. Louth,,Ireland
Within the Country	20 03 01	No	mixed municipal waste	D1	M	weighed	Offsite in Ireland	Ballynagran Landfill,w0165	Co. Wicklow,,Ireland
Within the Country	20 03 01	No	231.6 Dry Recyclables	R12	M	weighed	Offsite in Ireland	Irish Packaging Recycling Ltd,w0263-01	Road,Walkinstown,Dublin 12,,Ireland
Within the Country	20 03 01	No	Dry Recyclables	R12	M	weighed	Offsite in Ireland	Padraig Thornton Waste Disposal Ltd,w0044	Road,Ballyfermot,Dublin 10,,Ireland
Within the Country	20 03 01	No	mixed municipal waste - levy exempt	D1	M	weighed	Offsite in Ireland	Whiteriver Landfill,w0060-02	Dunleer,Co. Louth,,Ireland
Within the Country	20 03 01	No	Dry Recyclables	R13	M	weighed	Offsite in Ireland	Panda Ballymount,w0039-02	Cross,Tallaght,Dublin 24,,Ireland
Within the Country	20 03 01	No	7.32 Dry Recyclables	R13	M	weighed	Offsite in Ireland	Nurendale,w0261-01	Road,Finglas,Dublin 11,,Ireland
Within the Country	20 03 01	No	mixed municipal waste other wastes (including mixtures of materials) from mechanical treatment of wastes other than those mentioned in 19 12	R13	M	weighed	Offsite in Ireland	Nurendale,w0039-02	Ballymount Cross,Tallaght,Dublin 24,,Ireland
Within the Country	19 12 12	No	25.14 11	R10	M	weighed	Offsite in Ireland	Ballynagran Landfill,w0165	Co. Wicklow,,Ireland
Within the Country	19 12 09	No	0.0 minerals (for example sand, stones) other wastes (including mixtures of materials) from mechanical treatment of wastes other than those mentioned in 19 12	R10	M	weighed	Offsite in Ireland		
Within the Country	19 12 12	No	16.34 11	R12	M	weighed	Offsite in Ireland	Dublin Regional Recovery Facility,w0238-01	Merrywell Industrial Estate,Ballymount Road Lower,Ballymount Dublin 12,,Ireland
Within the Country	20 01 01	No	20.92 paper and cardboard	R12	M	weighed	Offsite in Ireland	Dublin Regional Recovery Facility,w0238-01	Merrywell Industrial Estate,Ballymount Road Lower,Ballymount Dublin 12,,Ireland
Within the Country	19 12 04	No	7.02 plastic and rubber other wastes (including mixtures of materials) from mechanical treatment of wastes other than those mentioned in 19 12	D1	M	weighed	Offsite in Ireland	Bord na Mona Drehid Landfill,w0201-03	Killinagh Upper,Carbury,Co. Kildare,,Ireland
Within the Country	19 12 12	No	22369.17 11	R10	M	weighed	Offsite in Ireland	Bord na Mona Drehid Landfill,w0201-03	Killinagh Upper,Carbury,Co. Kildare,,Ireland

Within the Country	20 01 02	No	24.36 glass other wastes (including mixtures of materials) from mechanical treatment of wastes other than those mentioned in 19 12	R12	M	weighed	Offsite in Ireland	Agnail,Ire/Agt117/12	Unit 9 Rosfield,50 Rosemount Business Park,Ballycoolin ,Dublin 11,Ireland
Within the Country	19 12 12	No	284.08 11	R10	M	weighed	Offsite in Ireland	Limerick County Council,W0017-04	Gortadroma Landfill,Ballynahill,Co. Limerick,,Ireland Ballymount
Within the Country	19 12 03	No	30.46 non-ferrous metal other wastes (including mixtures of materials) from mechanical treatment of wastes other than those mentioned in 19 12	R12	M	weighed	Offsite in Ireland	Irish Packaging Recycling Ltd,w0263-01	Road,Walkinstown,Dublin 12,,Ireland
Within the Country	19 12 12	No	26.28 11	R12	M	weighed	Offsite in Ireland	Irish Packaging Recycling Ltd,w0263-01	Ballymount Road,Walkinstown,Dublin 12,,Ireland
Within the Country	19 12 09	No	113.56 minerals (for example sand, stones)	R10	M	weighed	Offsite in Ireland	Corranure Landfill,w0077-04	Corranure,Cootehill RD,Cavan,Co. Cavan,Ireland
Within the Country	19 12 09	No	95.04 minerals (for example sand, stones) other wastes (including mixtures of materials) from mechanical treatment of wastes other than those mentioned in 19 12	R10	M	weighed	Offsite in Ireland	Tara Mines,P0516-03	Knockumber,Navan,Co. Meath,,Ireland
Within the Country	19 12 12	No	6780.04 11	R10	M	weighed	Offsite in Ireland	Tara Mines,P0516-03	Knockumber,Navan,Co. Meath,,Ireland