

 **Panda**  
**An Animal for Recycling**

*Site: Ballymount Cross, Tallaght, Dublin 24*

*Waste Licence Number W0039-02*

*Annual Environmental Report*

*01<sup>st</sup> January 2014 – 31<sup>st</sup> December 2014*

## Table of Contents

Table of Contents .....	2
1. Introduction.....	4
1.1 Company details.....	4
1.2 Management Structure .....	4
1.3 Financial Provision .....	5
1.4 Environmental Policy.....	5
1.5 Activities .....	6
1.6 Waste Activities carried out at the Facility.....	7
1.7 Water Usage:.....	7
2. Summary Information.....	8
2.1 Waste Received.....	8
2.2 Waste Transferred Off-Site for Disposal or Recovery .....	8
2.3 Waste Recovery Reports.....	8
2.4 Summary report on emissions and interpretation of environmental monitoring ....	10
2.4.1 <i>Surface Water</i> .....	10
2.4.2 <i>Foul Water</i> .....	11
2.4.3 <i>Dust Emissions</i> .....	12
2.4.4 <i>Noise Emissions</i> .....	13
2.4.5 <i>Bund, pipe and underground storage tanks integrity</i> .....	15
2.4.6 <i>Summary of resource and energy consumption</i> .....	15
2.4.7 <i>Water</i> .....	15
2.5 Site infrastructure.....	15
2.5.1 <i>In-place</i> .....	15
2.5.2 <i>Planned Infra-structure</i> .....	16
2.6 Progress Report on Proposals Developed to Minimise Water Demand & Trade Effluent Discharge .....	16
2.7 PRTR Emission.....	16
3. Environmental objectives and targets – 2014 and 2015. ....	17
3.1 Summary of reported incidents and complaints.....	19
3.1.1 <i>Reported Incidents Summary</i> .....	19
3.1.2 <i>Complaints:</i> .....	19
3.2 Review of nuisance controls .....	19
3.2.1 <i>Odour</i> .....	19

3.2.2 Noise .....	20
3.2.3 Dust .....	20
3.2.4 Vermin .....	20
3.2.5 Flies.....	20
3.2.6 Birds.....	20
3.2.7 Litter.....	20
4.0 Development of Procedures on Site.....	21
5.0 Pollution Emission Register.....	21
6.0 Report on Programme for Public Information .....	21
Appendix A.....	23
Appendix B .....	24
Appendix C .....	25
Appendix D.....	26
Appendix E .....	27

## 1. Introduction

Panda were granted the EPA Waste Licence W0039-02 on the 10<sup>th</sup> July 2012; following the transfer of the licence from Greenstar Environmental Services Ltd. Panda are licenced to accept 150,000 tonnes per annum. Appendix A illustrates the current site layout.

### 1.1 Company details

Licence No:	W0039-02
Name:	Nurendale T/a Panda Waste Services
Address:	Ballymount Cross, Tallaght, Dublin 24.
Telephone Number:	1850 65 65 65
Fax Number:	01 4245011
Website:	<a href="http://www.panda.ie">www.panda.ie</a>

### 1.2 Management Structure

Eamon Waters is the Managing Director of Panda. Brian McCabe and Noel Waters are company Directors. David Naughton is the Environmental Manager. David Boyd is the facility Manager on site. There are 120 employees either working directly or indirectly at the facility. Appendix B illustrates the organisational structure of the facility.

### 1.3 Financial Provision

A statement from our accountants is provided in Appendix C. At the present time the annual turnover and company assets are sufficient to offset environmental liabilities incurred during the course of operations and in the event that the company is closed.

### 1.4 Environmental Policy

In carrying out our function, Panda acknowledge that our activities impact upon the environment both through routine internal operations and the actions of our staff.

It is Panda's policy to protect the environment during all activities, both on and off-site.

This is achieved by:

- Strategic preparation and implementation of operating procedures (including an emergency response procedure).
- Utilizing BAT (Best Available Technology).
- Actively promoting environmental awareness amongst staff and clients through appropriate training and communication programs.
- Reduce energy use through effective education and awareness and the installation of energy efficient technology where appropriate.
- Implementing a policy of continuous improvement, by means of targeted objectives. All objectives and targets are monitored and up-dated accordingly.

Panda are committed to complying with all relevant environmental regulations and aim to supply a safe competitive and sustainable service with specific regards to the surrounding environment.

## 1.5 Activities

Under the waste licence W0039-02, Panda conducts the following activities:

### **Licensed Waste Disposal Activities, in accordance with the Third Schedule of the Waste Management Acts, 1996 to 2003**

#### **Class 11.**

Blending or mixture prior to submission to any activity referred to in a preceding paragraph of this Schedule.

#### **Class 12.**

Repackaging prior to submission to any activity referred to in a preceding paragraph of this Schedule.

#### **Class 13.**

Storage prior to submission to any activity referred to in a preceding paragraph of this Schedule, other than temporary storage, pending collection, on the premises where the waste concerned is produced.

### ***Licensed Waste Recovery Activities, in accordance with the Fourth Schedule of the Waste Management Acts, 1996 to 2003***

#### **Class 2.**

Recycling or reclamation of organic substances, which are not used as solvents (including composting and other biological transformation processes).

#### **Class 3.**

Recycling or reclamation of metals and metal compounds.

#### **Class 4.**

Recycling or reclamation of other inorganic materials.

#### **Class 13.**

Storage of waste intended for submission to any activity referred to in a preceding paragraph of this Schedule, other than temporary storage, pending collection, on the premises where such waste is produced.

Panda provide a waste collection service for the domestic, commercial and industrial sectors throughout Ireland and was awarded the Repak “Large Operator of the Year

award 2007” and “Runner up” in 2008, 2009, 2010, 2011 and 2012. Panda also won the inaugural Meath Innovator of the year 2010 and Meath Overall Business of the year 2010. Irish Packaging Recycling (Subsidiary) won the Repak “Recycling Company of the year 2014”.

The facility is licenced to operate 24 hours a day, however, the normal facility operating hours are 6am-5pm (Monday-Friday) & 6am-1pm (Saturdays). The facility is licensed to accept non-hazardous wastes only.

### 1.6 Waste Activities carried out at the Facility

Waste accepted and dispatched at the facility is weighed using P&L’s weighbridge software “IWS6”. Panda currently operates a single building for waste acceptance. The facility is primarily used as a transfer facility. The facility accepts predominantly skip waste from construction and demolition sites, household renovations/clearances and Domestic, Commercial & Industrial mixed municipal waste and organic waste. No hazardous waste, putrescible waste or liquid wastes are accepted at the facility.

Ferrous, Non Ferrous, Wood and bulky waste are segregated from the incoming waste, in the facility using a loading shovel, and stored in the building for onward movement. The remaining mixed waste is then bulked up and sent onward to Panda’s headquarters for processing or to appropriate for recovery or disposal.

### 1.7 Water Usage:

Water for dust/odour suppression, office and amenities use is taken from municipal supply and is metered by the council.

Water usage on site consists of:

- In-house road sweeper (daily visits).
- Dust suppression sprayers in the shed and on the doorways.
- Hoses on site for dust suppression.

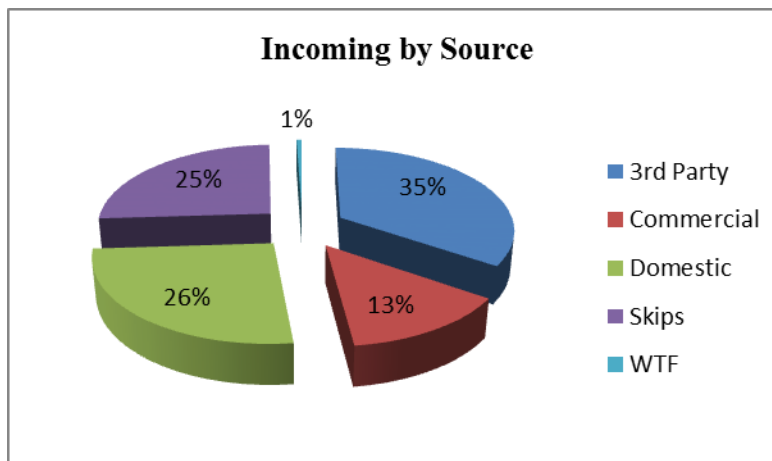
- Fire Fighting equipment.

## 2. Summary Information

### 2.1 Waste Received

The waste received at the facility from the 1<sup>st</sup> January 2014 to the 31<sup>st</sup> December 2014 was 108,490.8 tonnes. From the pie chart (Fig 1) it is evident that 3<sup>rd</sup> party deliveries are the largest source of Panda's waste accepted into Ballymount with domestic waste and skip deliveries the next largest.

**Fig. 1:** Waste Collected by Panda by Customer profile.



### 2.2 Waste Transferred Off-Site for Disposal or Recovery

See Appendix D for the breakdown of the different destinations used for the waste accepted at the facility and of waste removed off site by EWC Code.

### 2.3 Waste Recovery Reports

To contribute to the Landfill Directive, Panda operates various systems to maximise recovery and recycling with most processing being carried out in the headquarters' facility.

Panda applied to the Agency for a review the current Waste Licence (W0140-03) for the Beauparc facility in September 2009. This review was submitted to the Agency, so that



Panda can produce a SRF/RDF product from the residual waste previously sent to Landfill. Panda also reviewed the licence for the purpose of constructing an Anaerobic Digestion/Composting plant. Panda have rolled out a source segregated collection service for biodegradable waste for both household and commercial customers.

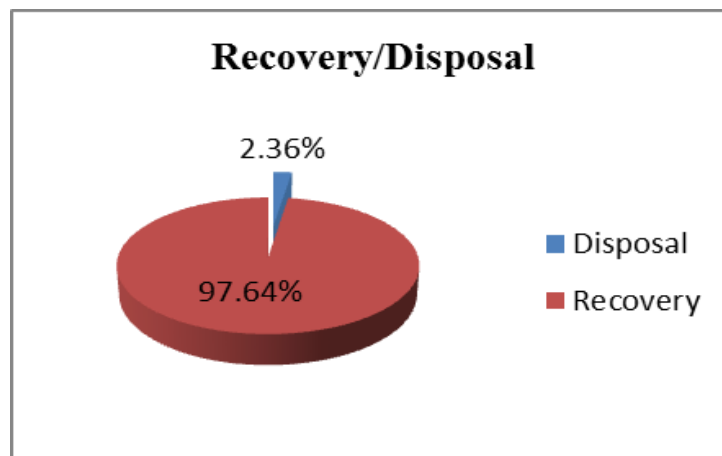
Panda process the mixed C&D waste in the Beuparc facility in building 2, this includes a shredder, trommel, magnet, wind shifter and a picking line so as to divert as much C&D waste away from landfill as possible in order to comply with “A Resource Opportunity, 2012” for landfill diversion. To date the processing of C&D Waste has been extremely successful with the majority of the residual being processed into Solid Recovered Fuel.

Table 1 and Fig. 2 details the recovery rates of waste leaving Panda’s facility.

**Table 1:** Outgoing destination and recovery rate.

Destination	Tonnage
Disposal	2522.64
Recovery	104537.55

**Fig. 2:** Outgoing destination recovery rate.



## 2.4 Summary report on emissions and interpretation of environmental monitoring

Under Schedule C of the licence W0039-2, Panda are required to monitor surface water, foul water emissions, BMW content of municipal waste dispatched to landfill (Frequency-as specified by the Agency), noise and ambient air monitoring (Dust). The following sub-headings detail the results from independent laboratories of the different parameters and the emission limit values ELV's set by the EPA and any complaints and incident that may have occurred during the year.

### 2.4.1 Surface Water

Storm water passes through a silt trap and oil interceptor prior to being discharged to the municipal storm water network. The surface water monitoring point is located at the south-western corner of the facility at the co-ordinates X/E 309589 Y/N 230305 (SW1).

**Table 2.** Surface water monitoring 2014

Parameter	Units	31/01/14	February	28/03/14	April	28/05/14	June
BOD	mg/L	8	Ns	<2	Ns	<2	Ns
COD	mg/L	43	Ns	7	Ns	24	Ns
Electrical Conductivity	Uscm-1@20C	496	Ns	651	Ns	465	Ns
Oils, Fats & Grease	mg/L	<1	Ns	<1	Ns	<1	Ns
pH	pH units	7.5	Ns	7.4	Ns	7.4	Ns
Suspended Solids	mg/L	34	Ns	6	Ns	36	Ns

Parameter	Units	July	29/08/14	September	23/10/14	27/11/14	17/12/14
BOD	mg/L	Ns	<2	Ns	<2	<2	<2
COD	mg/L	Ns	12	Ns	<5	5	9
Electrical Conductivity	Uscm-1@20C	Ns	288	Ns	322	554	430
Oils, Fats & Grease	mg/L	Ns	<1	Ns	<1	<1	<1
pH	pH units	Ns	7.4	Ns	7.3	7.5	7.2
Suspended Solids	mg/L	Ns	<2	Ns	12	<2	7

Ns = No sample taken due to lack of flow (stagnant water)

Result for Suspended solid was exceeded in January and May. At the time of monitoring, there had not been any incidents (spill or accidental release) which could be identified as the source. An incident report form was submitted to the Agency in relation to this exceedance.

#### 2.4.2 Foul Water

Foul water passes through a silt trap and oil interceptor prior to being discharged to the sewer network. The foul water monitoring point is located at the south-western corner of the facility at the co-ordinates X/E 309604 Y/N 230321 (FS1). Results were exceeded in April for COD and Suspended Solids. Inadequate drain cleaning was believed to be the cause.

**Table 3.** Foul water monitoring 2014

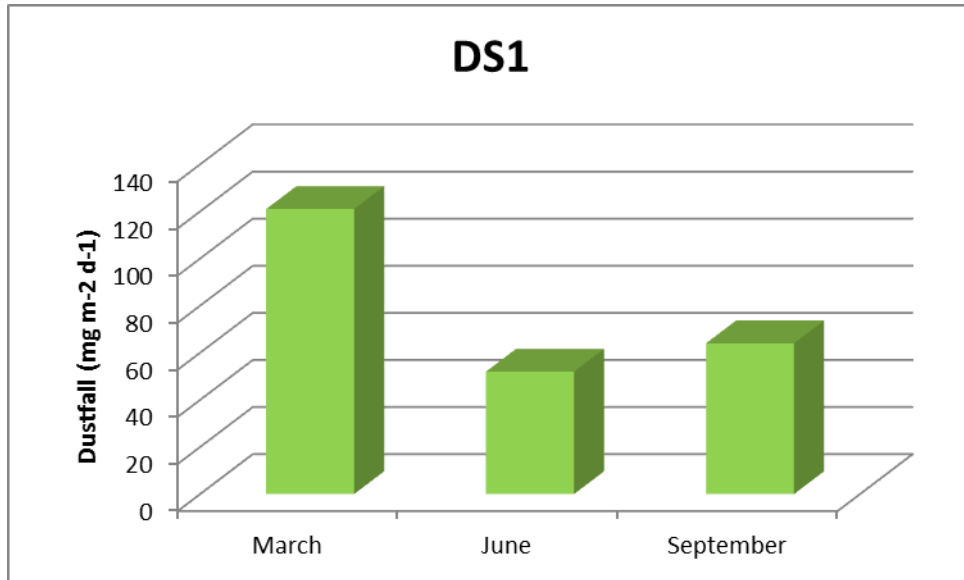
Parameter	Units	28/03/14	28/05/14	29/08/14	23/10/14	27/11/14	17/12/14
BOD	mg/L	225	6600	800	300	475	50
COD	mg/L	813	14780	1605	1027	3185	322
Oils, Fats & Grease	mg/L	18	140	16	30	35	6
pH	pH units	7.1	6.1	6.6	6.7	7.7	7.9
Surfactants	ug/L	0.821	230	1758.5	4730	316.5	390.4
Suspended Solids	mg/L	137	2419	287	352	2667	61

Sample in May was extremely stagnant when taken; this was recorded on Chain of Custody submitted to the laboratory. There had been no flow or rainfall leading up to sampling. Result for Suspended solid was exceeded in November. At the time of monitoring, there had not been any incidents (spill or accidental release) which could be identified as the source. An incident report form was submitted to the Agency in relation to these exceedances of ELV's.

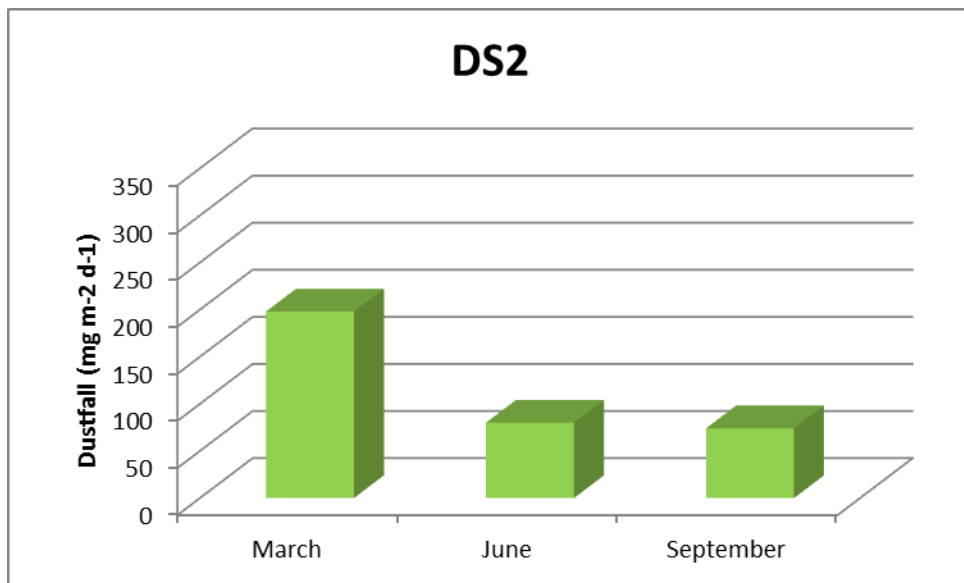
### 2.4.3 Dust Emissions

As per schedule E.2 for dust deposition limits, there are currently four sampling locations (DS1, DS2, DS3 and DS4). Monitoring is required three times a year. A dust suppression unit was installed in the shed and on doorways to ensure dust emissions from the tipping, sorting and reloading are kept to a minimum. Figs 3-6 illustrate dust recordings for 2014.

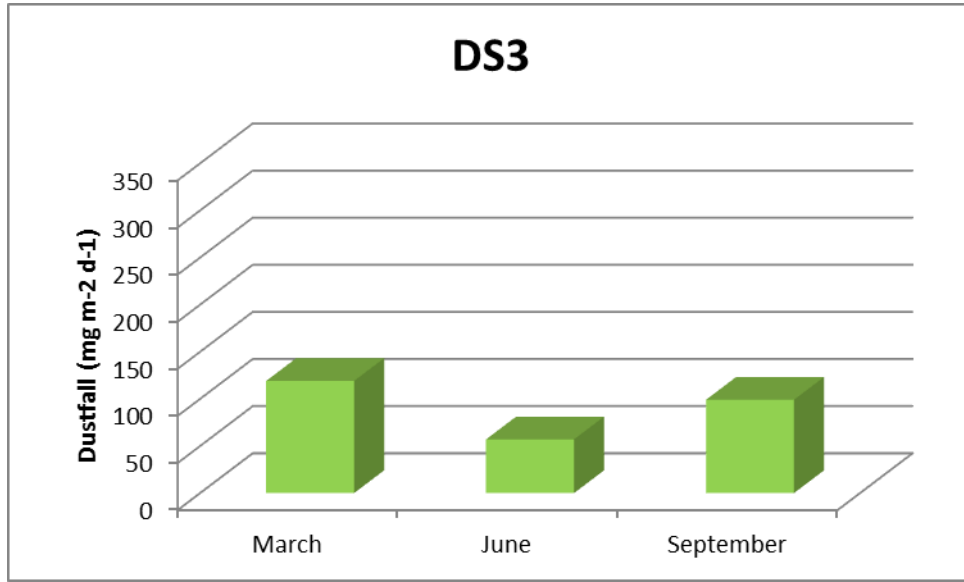
**Fig. 3:** Dust emission results for DS1 (AD1)



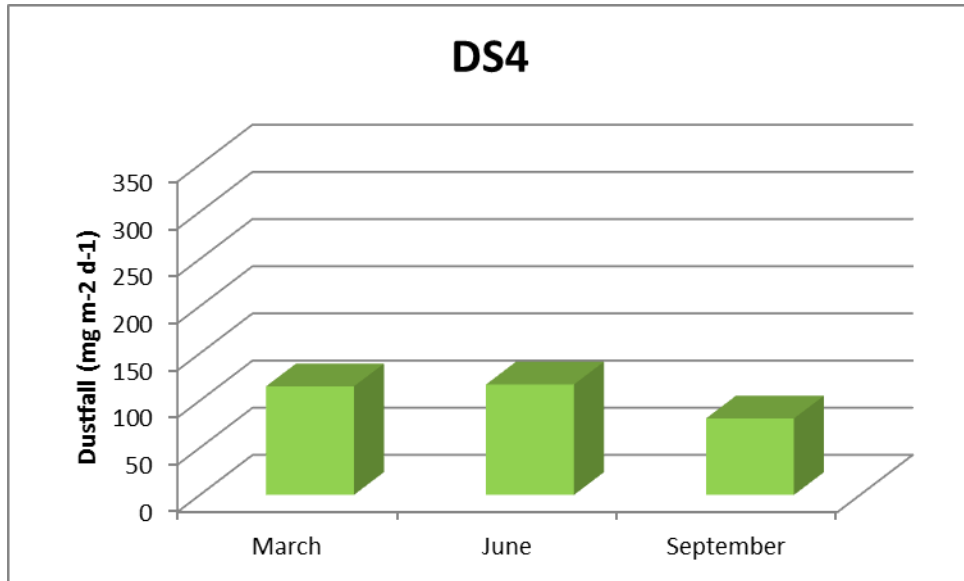
**Fig. 4:** Dust emission results for DS2 (AD2)



**Fig. 5:** Dust emission results for DS3



**Fig 6:** Dust emissions results for DS4



As per Schedule F.2, the dust deposition limit for the site is 350 mg m<sup>-2</sup> d<sup>-1</sup>. DS1 to DS4 are within licenced ELV's.

#### 2.4.4 Noise Emissions

Noise emissions are monitored according to Schedule E.3 and the emission limit values (ELV) set out in Schedule F.4 of the licence. An independent competent consultant has

been commissioned to conduct the noise sampling for the facility. Table 4 and 5 details results of noise monitoring conducted on the 17<sup>th</sup> December 2014.

**Table 4.** Noise emissions 2014

Day-time Recorded Noise Levels dB(A) – Intervals 30 minutes

Location	Time	Leq	L10	L90	Comments
B1	16.53	62.6	64.8	57.5	Bobcat working close-by and trucks on site
B2	16.14	63.4	64.3	59.6	Trucks entering and exiting building close-by
B3	16.12	63.8	66.2	59.3	Road traffic (Ballymount Rd Upper) and trucks entering and exiting site. Site emissions less than Lmin of 55.9dBA
NSL1	17.03	67.3	69.8	61.6	Waste facility inaudible at less than Lmin of 56.4dBA. Site emissions less than 55dBA

**Table 5**

Night-time Recorded Noise Levels dB(A) – Intervals 30 minutes

Location	Time	Leq	L10	L90	Comments
B1	22.15	52.7	55.1	51.5	Road traffic-No activity on Waste site
B2	22.30	52.3	55.3	51.4	Road traffic-No activity on Waste site
B3	22.00	56.5	57.9	53.6	Road traffic-No activity on Waste site
NSL1	23.15	57.3	59.8	54.6	Road traffic-No activity on Waste site

The main operation on site is housed (segregation and loading of material). Other activity on-site was activity associated with the forklift and trucks entering and leaving the site. The dominant noise outside the site is from the busy road network (adjacent Ballymount Road and M50).

#### *2.4.5 Bund, pipe and underground storage tanks integrity*

The integrity and water tightness of all underground pipes, all tanks, bunding structures and containers and their resistance to penetration by water and other materials is required to be carried out every three years and thereafter and reported to the Agency. The bund integrity test was carried out in 2012. The results show that the bund has maintained its integrity. The pipeline integrity test has been carried out in 2013, following alterations to the drainage network.

#### *2.4.6 Summary of resource and energy consumption*

**Table 6:** Summary of Energy Consumption from January 2014 to December 2014.

<b>Resource</b>	
Gas Oil	70,349 Litres
Electricity	271.37 MWhr

#### *2.4.7 Water*

Water is obtained from the municipal water supply.

### 2.5 Site infrastructure

The following are details on infrastructure in the facility.

#### *2.5.1 In-place*

The current site infrastructure is outlined below in List 1. List 2 details the waste processing equipment used on site.

**List 1:** Current site infrastructure

1. Offices
2. Weighbridge.
3. One x Waste processing building
4. One x Dust suppression system
5. Canteen & toilets.
6. Oil Interceptor

## 7. Fuel Depot

### **List 2:** Waste processing equipment

1 x loading shovel

1 x Forklift

There is sufficient back up within the group to replace loading/sorting equipment in the event of a break down.

### *2.5.2 Planned Infra-structure*

Proposed infrastructure is outlined in List 3.

### **List 3:** Proposed infrastructure:

1. No new infrastructure planned.

## 2.6 Progress Report on Proposals Developed to Minimise Water Demand & Trade Effluent Discharge

Water usage on site is already at a minimum. No proposals required.

## 2.7 PRTR Emission.

Panda's PRTR emission return is provided in Appendix E.



### 3. Environmental objectives and targets – 2014 and 2015.

No	Objective & Target	Method of Achievement	Responsibility	2014 Programme	Complete in 2014	2015 Programme
1	<b>Assess the Effectiveness of Nuisance Control Procedures</b>	Continually review and assess all nuisance control procedures to ensure minimal impact on surrounding area	Environmental Manager	Continuous	Continuous	July '15
		Ensure yards are cleaned at the end of each working day	Operatives	Continuous	Continuous	Continuous
2	<b>Prevent Water Pollution from Run-Off</b>	Ensure all gullies and drains are maintained and regularly cleaned	Facility Manager	Continuous	Continuous	Continuous
3	<b>Assess &amp; Review Resource &amp; Energy Consumption at the site</b>	Carry out an energy audit on the site	Environmental Manager	N/a	N/a	September '15
4	<b>Maintain and Develop the Environmental Management System</b>	Maintain EMS Documentation on site	Environmental Manager	Continuous	Continuous	Continuous
		Update procedures to reflect operational and control changes				
5	<b>Assess Waste Acceptance Procedures so as to minimise volume of erratic's</b>	Communicate with customers about the items that are not acceptable in the in-coming wastes	Call Centre/Sales Reps	Continuous	Continuous	Continuous
6	<b>Environmental Monitoring</b>	Implement the Environmental Monitoring Programme specified in the Waste Licence	Environmental Manager	Continuous	Continuous	Continuous
		Investigate any accidents of emission limit values	Environmental Manager	Continuous	Continuous	Continuous
7	<b>Ensure and implement a training programme</b>	Identify staff training requirements and provide relevant training	Environmental Dept	July '14	Completed in '14	July '15

No	Objective & Target	Method of Achievement	Responsibility	2014 Programme	Complete in 2014	2015 Programme
8	To control any emergencies that may arise at the facility	Review and implement the Emergency Response Procedure	Environmental Manager	July '14	Completed in '14	July '15
9	Prepare a Standard Operating Procedures Manual	Review the SOP manual relevant to site operations	Environmental Manager	May '14	Completed in '14	July '15
10	Ensure lighting in waste handling buildings provide sufficient lighting so as to assess incoming waste	Clean all light bulbs and covers in waste handling buildings	Facility Manager	June '14	Completed in '14	Aug '15
12	Office Recycling	Review office recycling	Facility Manager	May '14	Completed	May '15
13	Pipe Integrity Test	Carry out a Pipe Integrity Test	Environmental Manager	Q3 '13	Completed	'16
14	Yard Sweeper	Purchase Permanent yard sweeper for yard	Maintenance Dept	N/a	N/a	Q1 '15
15	Achieve ISO accreditation	Carry 1 <sup>st</sup> Stage Audit	Legal & Compliance Counsel	N/a	N/a	Q4 '15

### 3.1 Summary of reported incidents and complaints

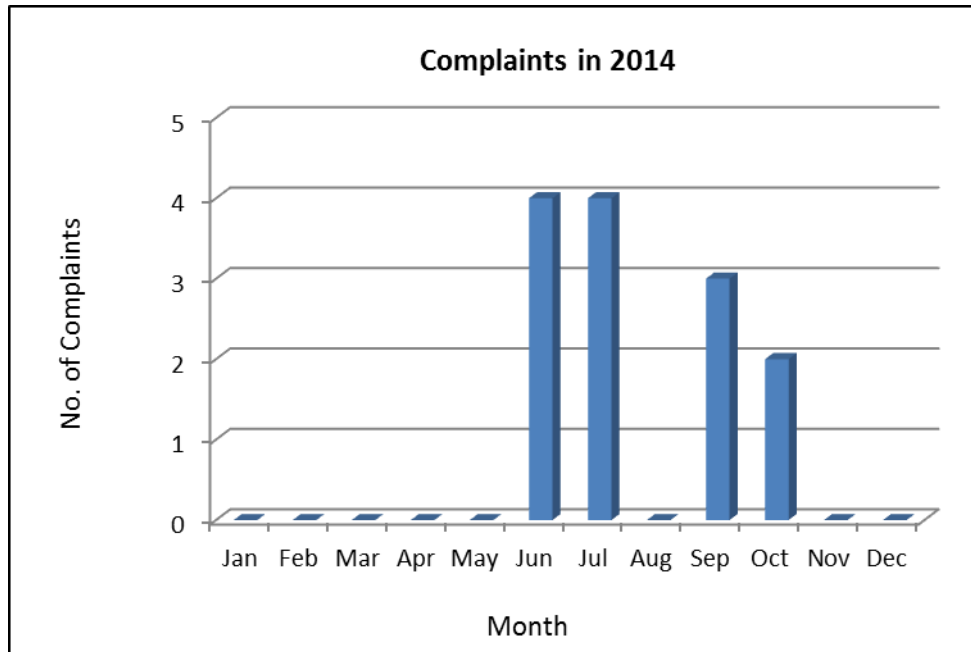
#### 3.1.1 Reported Incidents Summary

Three reportable incidents occurred in 2014 whereby emission limit values were exceeded. In January and May for suspended solids and one in November for Foul water discharge for suspended solids. These were reported to the Agency.

#### 3.1.2 Complaints:

There were a total of 13 complaints made to the Agency and/or the facility during this reporting year of 2014. Complaints illustrated in Fig 7.

**Fig. 7:** 2014 complaints



### 3.2 Review of nuisance controls

#### 3.2.1 Odour

There is minimal risk of odour nuisance due to the nature of the waste accepted at the facility. However, fast turnaround times of waste help to prevent any odour nuisances that may occur.

There is a power washer available to wash odorous bins. Each day, the facility manager conducts an inspection of the site. Odour nuisances are included on this inspection.

### *3.2.2 Noise*

The monitoring results showed that noise is not a nuisance, as only minimal plant operates on site.

### *3.2.3 Dust*

A dust suppression system is installed in the shed and on the doorways of the building. A road sweeper visits the site each day of operation. Fire hoses are also available to spray water on concreted yards as required.

### *3.2.4 Vermin*

A file on vermin control is maintained in the office. A sub-contractor is used to control any vermin on site.

### *3.2.5 Flies*

Good housekeeping practices are used to prevent fly infestations. The yard is kept clean using a road sweeper and all waste for disposal is removed from the facility within 48 hours, or 72 hours in the case of a bank holiday weekends.

### *3.2.6 Birds*

In order to avoid having birds as a nuisance, litter control is practised at all times, this includes regular litter patrols.

### *3.2.7 Litter*

A member of staff carries out litter inspections of the facility twice daily and gathers any litter deposited.

#### **4.0 Development of Procedures on Site**

The Emergency Response Procedure (ERP) was reviewed and amended to reflect the changes of the company and update useful contact telephone numbers.

A review of all site procedures was carried out, no new procedures were developed in 2014.

#### **5.0 Pollution Emission Register**

After consulting the PERL list Panda are not using any substance that is listed at present.

#### **6.0 Report on Programme for Public Information**

Panda have re-developed their website; one of the features is an Environmental page where the following can be downloaded,

- Facility licences (W0003-03, **W0039-02**, W0140-03, W0238-01, W0261-01, W0263-01)
- Multi-regional Waste collection permit (WCP-DC-09-1188-01),
- Environmental Policy,

Domestic wheelie bin customers can also download their relevant collection calendar and pay bills.

Panda have a news section on the website, with regular updates on collections, offers, etc. This proves extremely beneficial during inclement weather conditions informing customers of difficulties with collecting waste on specified days due to dangerous road conditions.

Over the Christmas period 2014 Panda put advertisements in all the local newspapers to inform customers of the schedule of bin collections over the Christmas Period. Panda also issued all domestic customers with a Christmas calendar showing collection days over that period. If there were any change to a domestic run or route, this would also be advertised in the local media.

In March 2009, Panda commenced SMS messaging to domestic customers regarding their collections. This was beneficial especially periods of inclement weather conditions; this enables Panda to contact customers to inform them that collection days may have to be changed to alternative days, from this Panda received positive feedback. Panda are also encouraging customers to receive email invoicing, thereby reducing dependence on paper invoices and envelopes.

Recycling certificates are issued to customers, on request, so that they can determine their recycling on a monthly basis.

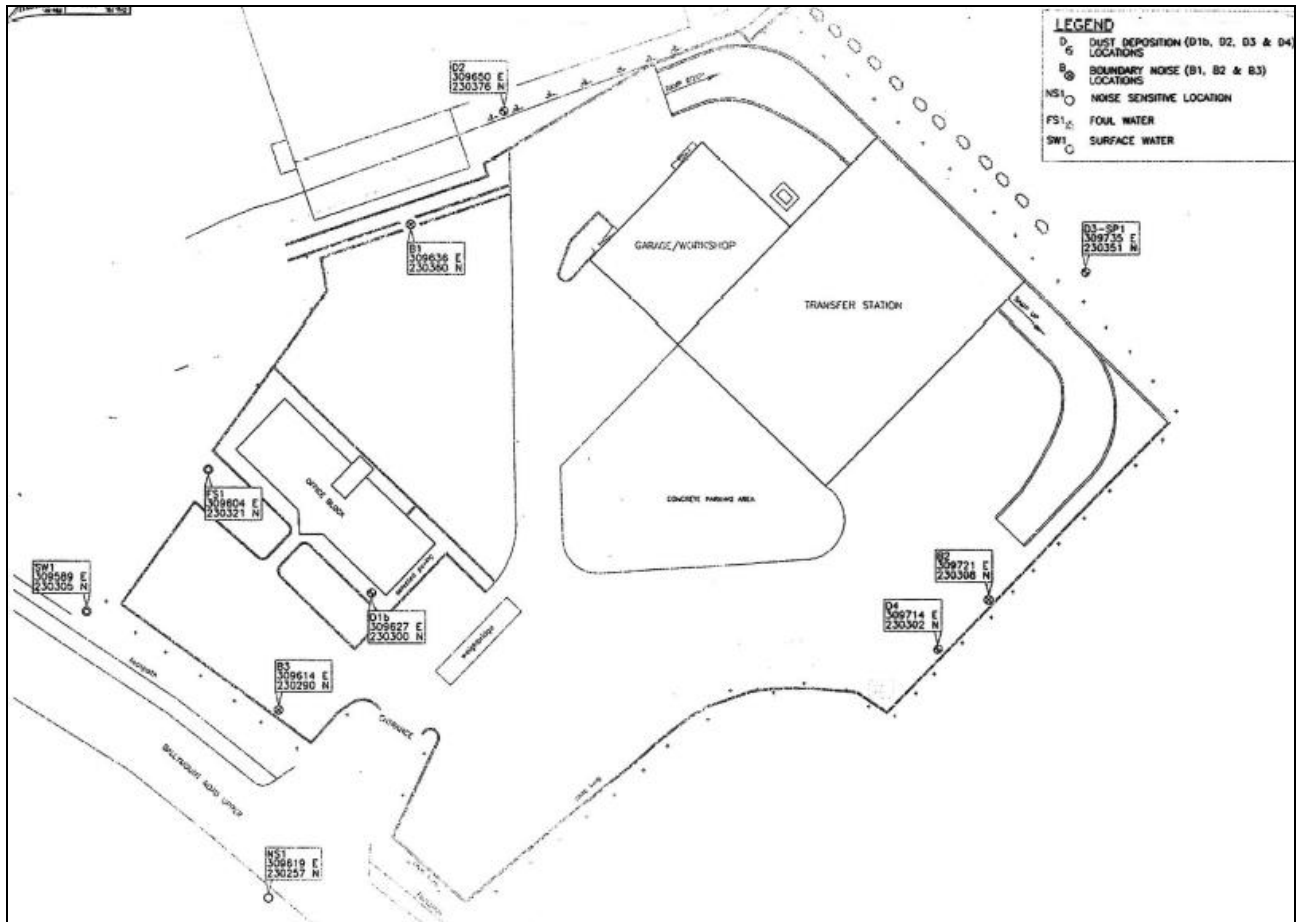
Advertisements are taken out regularly in the local newspapers informing customers of the services that Panda offer. There is also a large advertisement in the golden pages, which is available to the general public. Regular tours of the facility are given to schools and to members of the public upon request.

During the reporting period there were no requests from members of the public to inspect any Environmental Records.

The information in the Annual Environmental Report is true and accurate representation of the activities conducted by Panda in 2014.

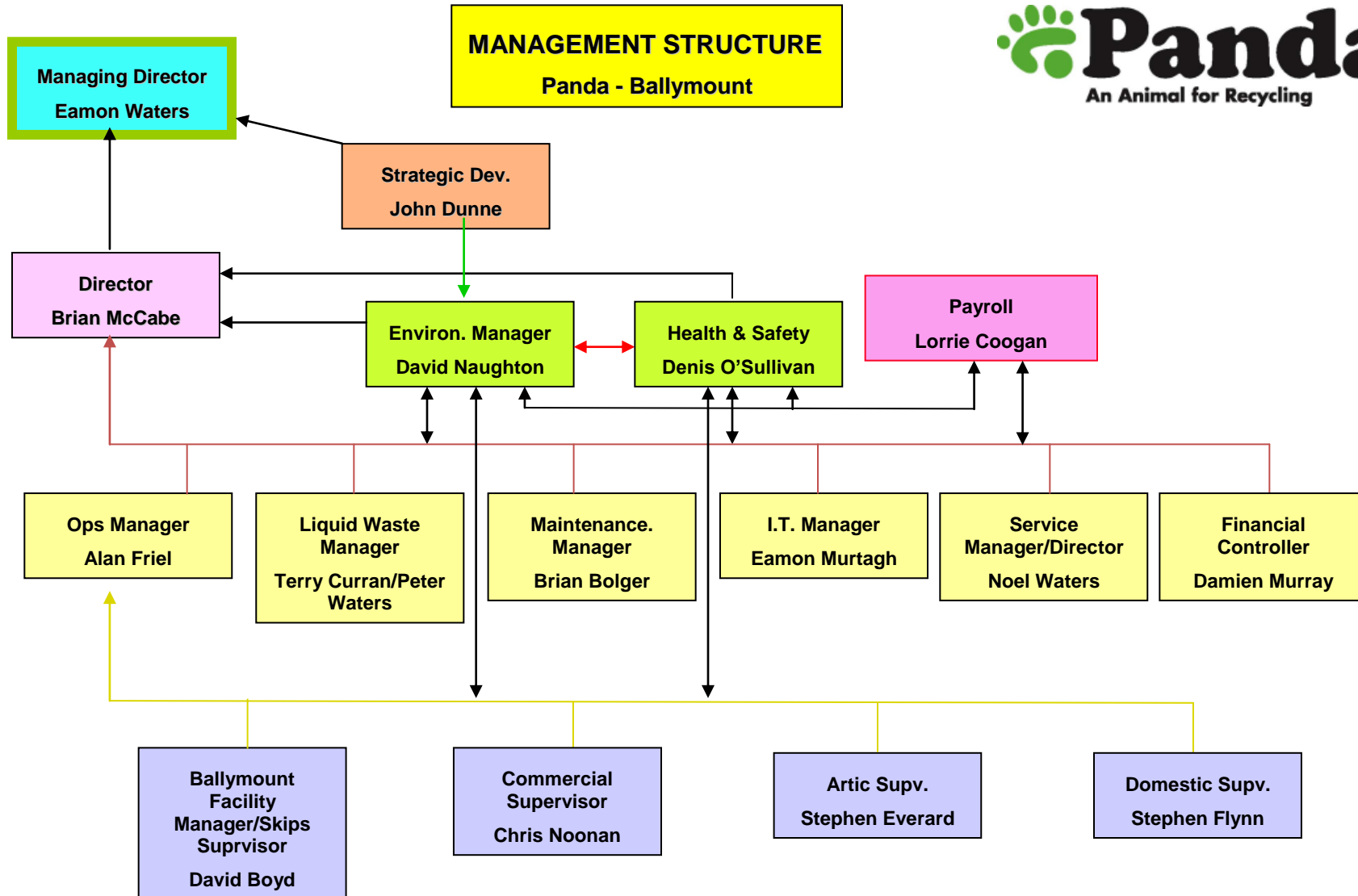
# Appendix A

## Site Layout



# Appendix B

## Organisational Structure





# Appendix C

## Financial Statement



**Fagan Lynch Donnellan**  
Chartered Accountants & Registered Auditors

Our Ref: VL/NMcK

18<sup>th</sup> March 2015

Environmental Protection Agency,  
McCumiskey House,  
Richview,  
Clonskeagh Road,  
Dublin 14.

**Re: Nurendale Ltd T/A Panda Waste**

Dear Sir,

We act as Auditors and Taxation Agents for the above and have acted in this capacity in excess of 10 years.

We wish to confirm as follows:

1. Statutory Accounts have been filed for all years up to 31.12.2013 with the Companies Office.  
  
Accounts and Tax Returns have also been filed with Inspector of Taxes for all years to 31<sup>st</sup> December 2013.
2. The Company trades profitably and is on a very sound financial footing.

If you have any queries, please do not hesitate to contact us.

Yours faithfully,

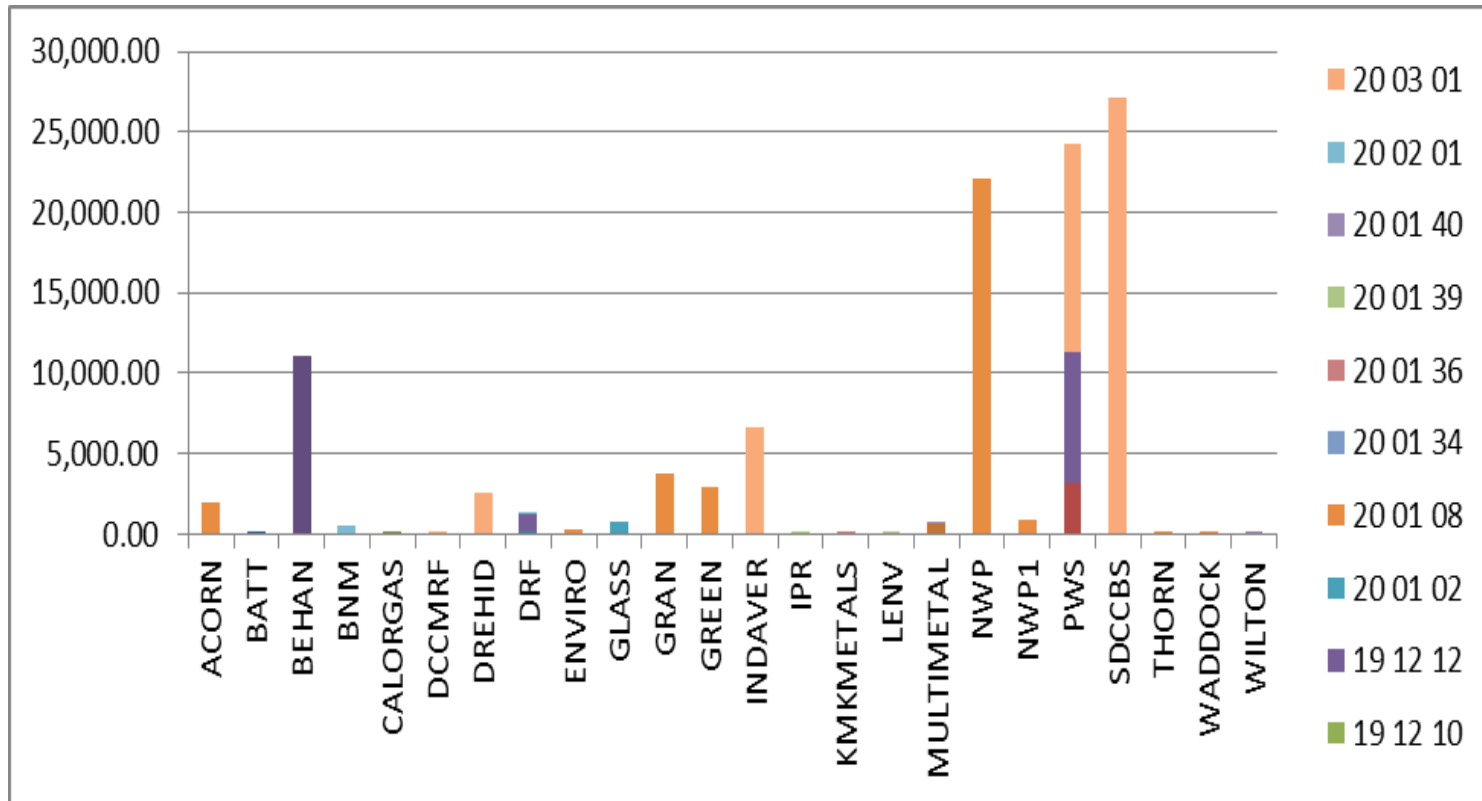
  
**FAGAN LYNCH DONNELLAN**

Newbridge House, Athlumney, Navan, Co. Meath  
Tel: (046) 9033700 Fax: (046) 9029341 e-mail: info@fld.ie www.fld.ie  
John Fagan FCA Vincent Lynch FCA Mark McCartney FCCA  
Registered to carry on audit work and authorized to carry on investment business by the Institute of Chartered Accountants in Ireland (ICAI).  
Chartered Accountants Ireland is the operating name of ICAI.




# Appendix D

## Outgoing by Destination



# Appendix E

## PRTR Emissions

 <a href="#">Guidance to completing the PRTR workbook</a> <b>AER Returns Workbook</b> <small>Version 1.1.18</small>	
<b>REFERENCE YEAR</b>	2014
<b>1. FACILITY IDENTIFICATION</b>	
Parent Company Name	Nurendale
Facility Name	Nurendale (Ballymount Cross)
PRTR Identification Number	W0039
Licence Number	W0039-02
Classes of Activity	
<b>No.</b>	<b>class_name</b>
	- Refer to PRTR class activities below
Address 1	Ballymount Cross
Address 2	Tallaght
Address 3	Dublin 24
Address 4	
	Dublin
Country	Ireland
Coordinates of Location	-6.35528 53.3121
River Basin District	IEEA
NACE Code	3821
Main Economic Activity	Treatment and disposal of non-hazardous waste
<b>AER Returns Contact Name</b>	David Naughton
<b>AER Returns Contact Email Address</b>	david.naughton@nurendale.ie
<b>AER Returns Contact Position</b>	Environmental Officer
<b>AER Returns Contact Telephone Number</b>	086 6045905
<b>Returns Contact Mobile Phone Number</b>	086 6045905
<b>AER Returns Contact Fax Number</b>	046 9024189
<b>Production Volume</b>	0.0
<b>Production Volume Units</b>	
<b>Number of Installations</b>	0
<b>Number of Operating Hours in Year</b>	0
<b>Number of Employees</b>	100
<b>User Feedback/Comments</b>	
<b>Web Address</b>	www.panda.ie
<b>2. PRTR CLASS ACTIVITIES</b>	
<b>Activity Number</b>	<b>Activity Name</b>
5(c)	Installations for the disposal of non-hazardous waste
5(c)	Installations for the disposal of non-hazardous waste
50.1	General
<b>3. SOLVENTS REGULATIONS (S.I. No. 543 of 2002)</b>	
Is it applicable?	No
Have you been granted an exemption?	No
If applicable which activity class applies (as per Schedule 2 of the regulations)?	
Is the reduction scheme compliance route being used?	
<b>4. WASTE IMPORTED/ACCEPTED ON SITE</b> <a href="#">Guidance on waste imported/accepted onto site</a>	
Do you import/accept waste onto your site for on-site treatment (either recovery or disposal activities)?	No

SECTION B : REMAINING PRTR POLLUTANTS											
RELEASES TO AIR				Please enter all quantities in this section in KGs							
POLLUTANT		METHOD		ADD EMISSION POINT		QUANTITY					
No. Annex II	Name	M/C/E	Method Code	Designation or Description	Emission Point 1	T (Total) KG/Year	A (Accidental)	F (Fugitive)			
						0.0	0.0	0.0	0.0		
ADD NEW ROW   DELETE ROW * * Select a row by double-clicking on the Pollutant Name (Column B) then click the delete button											
SECTION C : REMAINING POLLUTANT EMISSIONS (As required in your Licence)											
RELEASES TO AIR				Please enter all quantities in this section in KGs							
POLLUTANT		METHOD		ADD EMISSION POINT				QUANTITY			
Pollutant No.	Name	M/C/E	Method Code	Designation or Description	Emission Point 1	Emission Point 2	Emission Point 3	Emission Point 4	T (Total) KG/Year	A (Accidental) KG/Year	F (Fugitive) KG/Year
210	Dust	M	ALT	Gravimetry	0.03	0.05	0.03	0.04	0.15	0.0	0.0
ADD NEW ROW   DELETE ROW * * Select a row by double-clicking on the Pollutant Name (Column B) then click the delete button											
Additional Data Requested from Landfill operators											
For the purposes of the National Inventory on Greenhouse Gases, Landfill operators are requested to provide summary data on landfill gas (Methane) flared or utilised in their facilities to accompany the figures for total methane generated. Operators should only report their net methane (CH <sub>4</sub> ) emission to the environment under T (Total) KG/yr for Section B: Sector specific PRTR pollutants above. Please complete the table below:											
<b>Landfill:</b> Nurendale (Ballymount Cross)											
Please enter summary data on the quantities of methane flared and / or utilised											
T (Total) kg/Year		M/C/E	Method Code	Designation or Description	Facility Total Capacity m3 per						
Total estimated methane generation (as per site model)		0.0			N/A						
Methane flared		0.0			0.0	(Total Flaring Capacity)					
Methane utilised in engines		0.0			0.0	(Total Utilising Capacity)					
Net methane emission (as reported in Section A above)		0.0			N/A						

4.2 RELEASES TO WATERS [Link to previous years emissions data](#) | PRTR#: W0039 | Facility Name : Nurendale (Ballymount Cross) | Filename : PRTR.xls | Return Year : 2014 | 30/03/2015 15:27

SECTION A : SECTOR SPECIFIC PRTR POLLUTANTS									
RELEASES TO WATERS				Please enter all quantities in this section in KGs					
POLLUTANT		METHOD		ADD EMISSION POINT		QUANTITY			
No. Annex II	Name	M/C/E	Method Code	Designation or Description	Emission Point 1	T (Total) KG/Year	A (Accidental)	F (Fugitive)	
						0.0	0.0	0.0	0.0
ADD NEW ROW   DELETE ROW * * Select a row by double-clicking on the Pollutant Name (Column B) then click the delete button									
SECTION B : REMAINING PRTR POLLUTANTS									
RELEASES TO WATERS				Please enter all quantities in this section in KGs					
POLLUTANT		METHOD		ADD EMISSION POINT		QUANTITY			
No. Annex II	Name	M/C/E	Method Code	Designation or Description	Emission Point 1	T (Total) KG/Year	A (Accidental)	F (Fugitive)	
						0.0	0.0	0.0	0.0
ADD NEW ROW   DELETE ROW * * Select a row by double-clicking on the Pollutant Name (Column B) then click the delete button									
SECTION C : REMAINING POLLUTANT EMISSIONS (as required in your Licence)									
RELEASES TO WATERS				Please enter all quantities in this section in KGs					
POLLUTANT		METHOD		ADD EMISSION POINT		QUANTITY			
Pollutant No.	Name	M/C/E	Method Code	Designation or Description	Emission Point 1	T (Total) KG/Year	A (Accidental)	F (Fugitive)	
						0.0	0.0	0.0	0.0

4.3 RELEASES TO WASTEWATER OR SEWER

[Link to previous years emissions data](#)

|PRTR#: W0039| Facility Name: Nurendale (Ballymount Cross)| Filename: PRTR.xls | Return Year: 2014

30/03/2015 15:27

SECTION A : PRTR POLLUTANTS

OFFSITE TRANSFER OF POLLUTANTS DESTINED FOR WASTE-WATER TREATMENT OR SEWER					Please enter all quantities in this section in KGs			
POLLUTANT			METHOD		ADD EMISSION POINT	QUANTITY		
No. Annex II	Name	MIC/E	Method Code	Designation or Description	Emission Point 1	T (Total) KG/Year	A (Accidental) KG/Year	F (Fugitive) KG/Year
						0.0	0.0	0.0

ADD NEW ROW | DELETE ROW \* \* Select a row by double-clicking on the Pollutant Name (Column B) then click the delete button

SECTION B : REMAINING POLLUTANT EMISSIONS (as required in your Licence)

OFFSITE TRANSFER OF POLLUTANTS DESTINED FOR WASTE-WATER TREATMENT OR SEWER					Please enter all quantities in this section in KGs			
POLLUTANT			METHOD		ADD EMISSION POINT	QUANTITY		
Pollutant No.	Name	MIC/E	Method Code	Designation or Description	Emission Point 1	T (Total) KG/Year	A (Accidental) KG/Year	F (Fugitive) KG/Year
303	BOD	M	PER	Calculated on annual flow rate. Analysis is ISO accredited	5.61	5.61	0.0	0.0
306	COD	M	PER	Calculated on annual flow rate. Analysis is ISO accredited	14.42	14.42	0.0	0.0
314	Fats, Oils and Greases	M	PER	Calculated on annual flow rate. Analysis is ISO accredited	0.16	0.16	0.0	0.0
308	Detergents (as MBAS)	M	PER	Calculated on annual flow rate. Analysis is ISO accredited	0.0	0.0	0.0	0.0
240	Suspended Solids	M	PER	Calculated on annual flow rate. Analysis is ISO accredited	3.93	3.93	0.0	0.0

4.4 RELEASES TO LAND

[Link to previous years emissions data](#)

|PRTR#: W0039| Facility Name: Nurendale (Ballymount Cross)| Filename: PRTR.xls | Return Year: 2014 |

30/03/2015 15:27

SECTION A : PRTR POLLUTANTS

RELEASES TO LAND					Please enter all quantities in this section in KGs		
POLLUTANT			METHOD		ADD EMISSION POINT	QUANTITY	
No. Annex II	Name	MIC/E	Method Code	Designation or Description	Emission Point 1	T (Total) KG/Year	A (Accidental)
						0.0	0.0

ADD NEW ROW | DELETE ROW \* \* Select a row by double-clicking on the Pollutant Name (Column B) then click the delete button

SECTION B : REMAINING POLLUTANT EMISSIONS (as required in your Licence)

RELEASES TO LAND					Please enter all quantities in this section in KGs		
POLLUTANT			METHOD		ADD EMISSION POINT	QUANTITY	
Pollutant No.	Name	MIC/E	Method Code	Designation or Description	Emission Point 1	T (Total) KG/Year	A (Accidental)
						0.0	0.0

5. ONSITE TREATMENT & OFFSITE TRANSFERS OF WASTE

30/03/2015 15:21

Please enter all quantities on this sheet in Tonnes

Transfer Destination	European Waste Code	Hazardous	Quantity (Tonnes per Year)	Description of Waste	Waste Treatment Operation	Method Used		Location of Treatment	Hazardous Waste: Name and Licence/Permit No of Next Destination Facility Hazardous Waste: Name and Licence/Permit No of Recoverer/Disposer	Hazardous Waste: Address of Next Destination Facility Hazardous Waste: Address of Recoverer/Disposer	Name and Licence/Permit No. and Address of Final Recoverer/Disposer (HAZARDOUS WASTE ONLY)	Actual Address of Final Destination i.e. Final Recovery/Disposal Site (HAZARDOUS WASTE ONLY)
						M/C/E	Method Used					
Within the Country	17 01 07	No		mixture of concrete, bricks, tiles and ceramics other than those mentioned in 17 01 06	R10	M	weighed	Offsite in Ireland	Murphy Environmental, W0129-01	Hollywood Great, Mags Head, The Naul, Co. Dublin, Ireland		
Within the Country	17 05 04	No	1104.14	soil and stones other than those mentioned in 17 05 03	R10	M	weighed	Offsite in Ireland	Behan Land Restoration Ltd, W0247-01	Blackhall, Punchestown, Naas, Co. Kildare, Ireland		
Within the Country	17 05 04	No		soil and stones other than those mentioned in 17 05 03	R12	M	weighed	Offsite in Ireland	Panda Beuparc, W0140-03	Beuparc Business Park, Navan, Co. Meath, Ireland		
Within the Country	17 08 02	No	125.96	gypsum-based construction materials other than those mentioned in 17 08 01	R12	M	weighed	Offsite in Ireland	Nurendale, W0261-01	Road, Finglas, Dublin 11, Ireland		
Within the Country	17 09 04	No		mixed construction and demolition wastes other than those mentioned in 17 09 01, 17 09 02 and 17 09 03	R12	M	weighed	Offsite in Ireland	Panda Beuparc, W0140-03	Beuparc Business Park, Navan, Co. Meath, Ireland		
Within the Country	19 12 02	No	52.56	ferrous metal	R12	M	weighed	Offsite in Ireland	Wilton Waste Recycling Ltd, WFP-CN-10-0005-01(1)	Kiffagh, Crosserlough, Ballyjamesduff, Co. Cavan, Ireland		
Within the Country	19 12 07	No	3179.62	wood other than that mentioned in 19 12 06	R12	M	weighed	Offsite in Ireland	Nurendale, W0140-03	Beuparc Business Park, Navan, Co. Meath, Ireland		
Within the Country	19 12 07	No	16.44	wood other than that mentioned in 19 12 06	R12	M	weighed	Offsite in Ireland	Nurendale, W0261-01	Road, Finglas, Dublin 11, Ireland		
Within the Country	19 12 09	No		minerals (for example sand, stones)	R13	M	weighed	Offsite in Ireland	Arthurstown Landfill, W0004	Kill, Co. Kildare, Ireland		
Within the Country	19 12 10	No	14.82	combustible waste (refuse derived fuel) other wastes (including mixtures of materials) from mechanical treatment of wastes other than those mentioned in 19 12 11	R12	M	weighed	Offsite in Ireland	Nurendale, W0140-03	Beuparc Business Park, Navan, Co. Meath, Ireland		
Within the Country	19 12 12	No	8098.28	other wastes (including mixtures of materials) from mechanical treatment of wastes other than those mentioned in 19 12 11	R12	M	weighed	Offsite in Ireland	Nurendale, W0140-03	Beuparc Business Park, Navan, Co. Meath, Ireland		
Within the Country	19 12 12	No	1160.69	other wastes (including mixtures of materials) from mechanical treatment of wastes other than those mentioned in 19 12 11	R12	M	weighed	Offsite in Ireland	Nurendale, W0261-01	Cappagh Road, Finglas, Dublin 11, Ireland		
Within the Country	19 12 12	No		other wastes (including mixtures of materials) from mechanical treatment of wastes other than those mentioned in 19 12 11	R12	M	weighed	Offsite in Ireland	Midland Waste, W0131	Navan, Co. Meath, Ireland		
Within the Country	19 12 12	No		other wastes (including mixtures of materials) from mechanical treatment of wastes other than those mentioned in 19 12 11	R12	M	weighed	Offsite in Ireland	Oxigen, W0208	Ballymount, Dublin 22, Ireland		
Within the Country	19 12 12	No		other wastes (including mixtures of materials) from mechanical treatment of wastes other than those mentioned in 19 12 11	R12	M	weighed	Offsite in Ireland	SDCC Baling Station, W0003-03	Ballymount Road, Walkinstown, Dublin 12, Ireland		
Within the Country	20 01 02	No	821.2	glass	R13	M	weighed	Offsite in Ireland	Agnail, Ire/Ag117/12	Unit 9 Rossfield, 50 Rosemount Business Park, Ballycoolin, Dublin 11, Ireland		
Within the Country	20 01 08	No	1967.26	biodegradable kitchen and canteen waste	R3	M	weighed	Offsite in Ireland	Acorn Recycling, W0249-01	Tipperary, Ireland		
Within the Country	20 01 08	No	29.24	biodegradable kitchen and canteen waste	R3	M	weighed	Offsite in Ireland	Waddock Composting, WFP-CW-13-001-01	Killamaster, Co. Carlow, Ireland		

Within the Country	20 01 08	No	biodegradable kitchen and canteen waste	R3	M	weighed	Offsite in Ireland	O'Toole Composting ,WFP-CW-10-0003-01	Ballintrane , Fenagh ,Co Carlow ,Ireland 55 Cargaclougher Road, Keady, Co.
To Other Countries	20 01 08	No	888.44 biodegradable kitchen and canteen waste	R3	M	weighed	Abroad	Natural World Products, NI 023268	Armagh, BT60 3RA, United Kingdom
Within the Country	20 01 08	No	biodegradable kitchen and canteen waste	R3	M	weighed	Offsite in Ireland	Bord na Mona ,W0201-03	Drehid Landfill , Carbury ,Co Kildare ,Ireland Cappincur Industrial Estate, Daingean Road, Tullamore, Co. Offaly, Ireland
Within the Country	20 01 36	No	discarded electrical and electronic equipment other than those mentioned in 20 01 21, 20 01 23 and 20 01 35	R12	M	weighed	Offsite in Ireland	KMK Metals, W0113-03 Clonmel Waste Disposal, WFP-TS-11-0001-01	Lawlesstown, Clonmel, Co. Tipperary, Ireland Lower Ballymount Road, Walkinstown, Dublin 12, Ireland
Within the Country	20 01 38	No	wood other than that mentioned in 20 01 37	R12	M	weighed	Offsite in Ireland	Irish Packaging Recycling, W0263-01	Kilberry, Athy, Co. Kildare, Ireland Cappagh Road, Finglas, Dublin 11, Ireland Larch Hill
Within the Country	20 01 39	No	109.64 plastics	R12	M	weighed	Offsite in Ireland	Irish Packaging Recycling, W0263-01	Kilberry, Athy, Co. Kildare, Ireland Cappagh Road, Finglas, Dublin 11, Ireland Larch Hill
Within the Country	20 02 01	No	478.6 biodegradable waste	R3	M	weighed	Offsite in Ireland	Bord na Mona ,W0198-01	Kildare, Ireland Cappagh Road, Finglas, Dublin 11, Ireland Larch Hill
Within the Country	20 02 01	No	6.54 biodegradable waste	R13	M	weighed	Offsite in Ireland	Nurendale, W0261-01	Larch Hill Stud, Newtownrathganley, Kildare, Co. Meath, Ireland Killarney ,Co Kerry ,Ireland
Within the Country	20 02 01	No	biodegradable waste	R3	M	weighed	Offsite in Ireland	Enrich, WFP-MH-08-0004-02 Killarney Waste Disposal ,W217-01	Crag Avenue, Clondalkin Industrial Estate, Clondalkin ,Dublin 22, Ireland
Within the Country	20 03 01	No	Dry Recyclables	R12	M	weighed	Offsite in Ireland	Dillon Recycling, WFP-KY-10-001	Tralee, Kerry, Ireland Balleally Landfill , Lusk ,Co Dublin, Ireland Drehid Landfill , Carbury ,Co Kildare ,Ireland Ballynagran, Coolbeg and Kicandra, Co. Wicklow, Ireland Knockharley, Kentstown, Co. Meath, Ireland Carlanstown , Duleek ,Co Meath ,Ireland
Within the Country	20 03 01	No	mixed municipal waste	R13	M	weighed	Offsite in Ireland	Greyhound Recycling & Recovery, W0205-01	Whiteriver Landfill ,Dunleer ,Co Louth ,Ireland Merrywell Business Park, Ballymount, Dublin 22, Ireland
Within the Country	20 03 01	No	Dry Recyclables	R12	M	weighed	Offsite in Ireland	Dillon Recycling, WFP-KY-10-001	Tralee, Kerry, Ireland Balleally Landfill , Lusk ,Co Dublin, Ireland Drehid Landfill , Carbury ,Co Kildare ,Ireland Ballynagran, Coolbeg and Kicandra, Co. Wicklow, Ireland Knockharley, Kentstown, Co. Meath, Ireland Carlanstown , Duleek ,Co Meath ,Ireland
Within the Country	20 03 01	No	mixed municipal waste	D5	M	weighed	Offsite in Ireland	Fingall Co Co , W0009-03	Whiteriver Landfill ,Dunleer ,Co Louth ,Ireland Merrywell Business Park, Ballymount, Dublin 22, Ireland
Within the Country	20 03 01	No	2522.64 mixed municipal waste	D5	M	weighed	Offsite in Ireland	Bord na Mona ,W0201-03	Whiteriver Landfill ,Dunleer ,Co Louth ,Ireland Merrywell Business Park, Ballymount, Dublin 22, Ireland
Within the Country	20 03 01	No	mixed municipal waste	D5	M	weighed	Offsite in Ireland	Greenstar Holdings Limited, W0165-02	Whiteriver Landfill ,Dunleer ,Co Louth ,Ireland Merrywell Business Park, Ballymount, Dublin 22, Ireland
Within the Country	20 03 01	No	mixed municipal waste	D5	M	weighed	Offsite in Ireland	Greenstar Holdings Limited, W0146-01	Whiteriver Landfill ,Dunleer ,Co Louth ,Ireland Merrywell Business Park, Ballymount, Dublin 22, Ireland
Within the Country	20 03 01	No	6602.02 mixed municipal waste	R1	M	weighed	Offsite in Ireland	Indaver IwMF ,W0167-02	Whiteriver Landfill ,Dunleer ,Co Louth ,Ireland Merrywell Business Park, Ballymount, Dublin 22, Ireland
Within the Country	20 03 01	No	mixed municipal waste	D5	M	weighed	Offsite in Ireland	Louth Co Co ,W0060-02	Whiteriver Landfill ,Dunleer ,Co Louth ,Ireland Merrywell Business Park, Ballymount, Dublin 22, Ireland
Within the Country	20 03 01	No	0.74 Dry Recyclables	R12	M	weighed	Offsite in Ireland	Dublin City Council MRF, W0238-02	Whiteriver Landfill ,Dunleer ,Co Louth ,Ireland Merrywell Business Park, Ballymount, Dublin 22, Ireland
Within the Country	20 03 01	No	mixed municipal waste	R12	M	weighed	Offsite in Ireland	Midland Waste, W0131	Whiteriver Landfill ,Dunleer ,Co Louth ,Ireland Merrywell Business Park, Ballymount, Dublin 22, Ireland
Within the Country	20 03 01	No	mixed municipal waste	R12	M	weighed	Offsite in Ireland	Miltown Composting ,W0270-01	Whiteriver Landfill ,Dunleer ,Co Louth ,Ireland Merrywell Business Park, Ballymount, Dublin 22, Ireland
Within the Country	20 03 01	No	mixed municipal waste	R12	M	weighed	Offsite in Ireland	O'Toole Composting ,WFP-CW-10-0003-01	Whiteriver Landfill ,Dunleer ,Co Louth ,Ireland Merrywell Business Park, Ballymount, Dublin 22, Ireland
Within the Country	20 03 01	No	12992.33 Dry waste	R12	M	weighed	Offsite in Ireland	Nurendale, W0140-03	Whiteriver Landfill ,Dunleer ,Co Louth ,Ireland Merrywell Business Park, Ballymount, Dublin 22, Ireland
Within the Country	20 03 01	No	27103.78 mixed municipal waste	R12	M	weighed	Offsite in Ireland	SDCC Baling Station, W0003-03	Whiteriver Landfill ,Dunleer ,Co Louth ,Ireland Merrywell Business Park, Ballymount, Dublin 22, Ireland
Within the Country	15 01 02	No	7.3 plastic packaging gases in pressure containers other than those mentioned in 16 05 04	R12	M	weighed	Offsite in Ireland	Johmick Ltd, WFP-FG-13-0001-01	Whiteriver Landfill ,Dunleer ,Co Louth ,Ireland Merrywell Business Park, Ballymount, Dublin 22, Ireland
Within the Country	16 05 05	No	0.5 those mentioned in 16 05 04	R13	M	weighed	Offsite in Ireland	Calor Gas, N/A	Whiteriver Landfill ,Dunleer ,Co Louth ,Ireland Merrywell Business Park, Ballymount, Dublin 22, Ireland
Within the Country	20 01 08	No	229.36 biodegradable kitchen and canteen waste	R3	M	weighed	Offsite in Ireland	Enviro Grind Ltd, WFP-DL-11-004-01	Whiteriver Landfill ,Dunleer ,Co Louth ,Ireland Merrywell Business Park, Ballymount, Dublin 22, Ireland

To Other Countries	20 0108	No	3762.26	biodegradable kitchen and canteen waste	R3	M	weighed	Abroad	Granville Ecopark Ltd,P0413/12A	Granville Industrial Estate,Dungannon,Co. Tyrone, BT70 1NJ,United Kingdom
Within the Country	15 0102	No	79.46	plastic packaging	R12	M	weighed	Offsite in Ireland	Irish Packaging Recycling,W0263-01	Lower Ballymount Road,Walkinstown,Dublin 12,,Ireland
Within the Country	16 0103	No	1.08	end-of-life tyres	R12	M	weighed	Offsite in Ireland	Irish Packaging Recycling,W0263-01	Lower Ballymount Road,Walkinstown,Dublin 12,,Ireland
Within the Country	20 0139	No	12.96	plastics	R12	M	weighed	Offsite in Ireland	Leinster Environmental,WFP-LH-11-0002-01	Clermont Business Park,Haynestown TD,Haggardstown,Dundalk Co. Louth,Ireland
Within the Country	19 12 02	No	603.72	ferrous metal	R12	M	weighed	Offsite in Ireland	Multimetals,WFP-09-0014-01	Conway Port Industrial Estate,Bollanegy,Murrough, Co. Wicklow,Ireland
Within the Country	19 12 03	No	2.14	non-ferrous metal	R12	M	weighed	Offsite in Ireland	Multimetals,WFP-09-0014-01	Conway Port Industrial Estate,Bollanegy,Murrough, Co. Wicklow,Ireland
Within the Country	20 0140	No	7.28	metals	R12	M	weighed	Offsite in Ireland	Multimetals,WFP-09-0014-01	Conway Port Industrial Estate,Bollanegy,Murrough, Co. Wicklow,Ireland
Within the Country	19 12 02	No	1.12	ferrous metal	R12	M	weighed	Offsite in Ireland	Nurendale,W0140-03	Beauparc Business Park,Navan,Co. Meath,,Ireland
Within the Country	20 0108	No	50.22	biodegradable kitchen and canteen waste	R3	M	weighed	Offsite in Ireland	Kilmainhamwood Compost,W0195-01	Ballynalurgan,Kilmainhamwood,Kells,Co. Meath,Ireland
Within the Country	20 0134	No	3.48	batteries and accumulators other than those mentioned in 20 0133	R12	M	weighed	Offsite in Ireland	Wilton Waste Recycling Ltd,WFP-CN-10-0005-01(1)	Kiffagh,Crosserlough,Balljamesduff,Co. Cavan,Ireland
Within the Country	20 0139	No	22.76	plastics	R12	M	weighed	Offsite in Ireland	Wilton Waste Recycling Ltd,WFP-CN-10-0005-01(1)	Kiffagh,Crosserlough,Balljamesduff,Co. Cavan,Ireland
Within the Country	20 0140	No	2.82	metals	R12	M	weighed	Offsite in Ireland	Wilton Waste Recycling Ltd,WFP-CN-10-0005-01(1)	Kiffagh,Crosserlough,Balljamesduff,Co. Cavan,Ireland
To Other Countries	20 0108	No	22070.41	biodegradable kitchen and canteen waste	R3	M	weighed	Abroad	Natural World Products Glenside,P0341-10A	Glenside Road,Dunmurry,Co. Antrim,BT17 0LH,United Kingdom
To Other Countries	20 0108	No	2881.34	biodegradable kitchen and canteen waste	R3	M	weighed	Abroad	Greenacre Composting Enterprises Ltd,LN09/86/M	102-104 Moira Road,Nutts Corner,Crumlin,Co. Antrim BT29 4HG,United Kingdom