

 **Panda**
An Animal for Recycling

Site: Cappagh Road, Finglas, Dublin 11

Waste Licence Number W0261-01

Annual Environmental Report

01st January 2013 – 31st December 2013

Table of Contents

Table of Contents	2
1. Introduction.....	4
1.1 Company details	4
1.2 Management Structure.....	4
1.3 Financial Provision	5
1.4 Environmental Policy	5
1.5 Activities	6
1.6 Waste Activities carried out at the Facility.....	7
1.7 Water Usage:	7
2. Summary Information.....	8
2.1 Waste Received	8
2.2 Waste Transferred Off-Site for Disposal or Recovery	8
2.3 Waste Recovery Reports.....	9
2.4 Summary report on emissions and interpretation of environmental monitoring	10
2.4.1 <i>Surface Water</i>	10
2.4.2 <i>Dust Emissions</i>	10
2.4.3 <i>Noise Emissions</i>	12
2.4.4 <i>Trade Effluent</i>	12
2.4.5 <i>Bund, pipe and underground storage tanks integrity</i>	13
2.4.6 <i>Summary of resource and energy consumption</i>	14
2.4.7 <i>Water</i>	14
2.5 Site infrastructure	14
2.5.1 <i>In-place</i>	14
2.5.2 <i>Planned Infra-structure</i>	15
2.6 Progress Report on Proposals Developed to Minimise Water Demand & Trade Effluent Discharge.....	15
2.7 PRTR Emission.	15
3. Environmental objectives and targets – 2013.	16
3.1 Summary of reported incidents and complaints	18
3.1.1 <i>Reported Incidents Summary</i>	18
3.1.2 <i>Complaints:</i>	18
3.2 Review of nuisance controls	18
3.2.1 <i>Odour</i>	18

3.2.2 <i>Noise</i>	18
3.2.3 <i>Dust</i>	18
3.2.4 <i>Vermin</i>	18
3.2.5 <i>Flies</i>	19
3.2.6 <i>Birds</i>	19
3.2.7 <i>Litter</i>	19
4.0 Development of Procedures on Site	19
5.0 Pollution Emission Register.....	19
6.0 Report on Programme for Public Information	19
Appendix A.....	21
Appendix B	22
Appendix C	23
Appendix D.....	24
Appendix E	25

1. Introduction

Panda were granted the EPA Waste Licence W0261-01 on the 31st August 2010. This replaces the Waste Permit WPT 95 issued by Fingal County Council. Under this licence, Panda will be able to process initially 50,000 tonnes per annum under Stage 1 and 200,000 tonnes per annum upon completion of necessary infrastructure. Appendix A illustrates the current site layout.

1.1 Company details

Licence No:	W0261-01
Name:	Nurendale Limited t/a Panda Waste Services
Address:	Cappagh Road, Finglas, Dublin 11.
Telephone Number:	01 8298961 or 1850 65 65 65
Fax Number:	046 9024189
Website:	www.panda.ie

1.2 Management Structure

Eamon Waters is the Managing Director of Panda. Brian McCabe and Noel Waters are company Directors. David Naughton is the Environmental Manager. Kieran Connor is the facility Manager on site. There are 110 employees either working directly or indirectly at the facility. Appendix B illustrates the organisational structure of the facility.

1.3 Financial Provision

A statement from our accountants is provided in Appendix C. At the present time the annual turnover and company assets are sufficient to offset environmental liabilities incurred during the course of operations and in the event that the company is closed.

1.4 Environmental Policy

In carrying out our function, Panda acknowledge that our activities impact upon the environment both through routine internal operations and the actions of our staff.

It is Panda's policy to protect the environment during all activities, both on and off-site.

This is achieved by:

- Strategic preparation and implementation of operating procedures (including an emergency response procedure).
- Utilizing BAT (Best Available Technology).
- Actively promoting environmental awareness amongst staff and clients through appropriate training and communication programs.
- Reduce energy use through effective education and awareness and the installation of energy efficient technology where appropriate.
- Implementing a policy of continuous improvement, by means of targeted objectives. All objectives and targets are monitored and up-dated accordingly.

Panda are committed to complying with all relevant environmental regulations and aim to supply a safe competitive and sustainable service with specific regards to the surrounding environment.

1.5 Activities

Under the waste licence W0261-01, Panda conducts the following activities:

Licensed Waste Disposal Activities, in accordance with the Third Schedule of the Waste Management Acts, 1996 to 2003

Class 11.

Blending or mixture prior to submission to any activity referred to in a preceding paragraph of this Schedule.

Class 12.

Repackaging prior to submission to any activity referred to in a preceding paragraph of this Schedule.

Class 13.

Storage prior to submission to any activity referred to in a preceding paragraph of this Schedule, other than temporary storage, pending collection, on the premises where the waste concerned is produced.

Licensed Waste Recovery Activities, in accordance with the Fourth Schedule of the Waste Management Acts, 1996 to 2003

Class 2.

Recycling or reclamation of organic substances, which are not used as solvents (including composting and other biological transformation processes).

Class 3.

Recycling or reclamation of metals and metal compounds.

Class 4.

Recycling or reclamation of other inorganic materials.

Class 13.

Storage of waste intended for submission to any activity referred to in a preceding paragraph of this Schedule, other than temporary storage, pending collection, on the premises where such waste is produced.

Panda provide a waste collection service for the domestic, commercial and industrial sectors throughout Ireland and was awarded the Repak “Large Operator of the Year

award 2007” and “Runner up” in 2008, 2009, 2010, 2011 and 2012. Panda also won the inaugural Meath Innovator of the year 2010 and Meath Overall Business of the year 2010.

The normal facility operating hours are 6am-5pm (Monday-Friday) & 6am-2pm (Saturdays). The facility is licensed to accept non-hazardous wastes only.

1.6 Waste Activities carried out at the Facility

Waste accepted and dispatched at the facility is weighed using P&L’s weighbridge software “IWS6”. Panda currently operates a single building for waste acceptance. The facility is primarily used as a transfer facility. The facility accepts predominantly skip waste from construction and demolition sites, household renovations/clearances and C&I Dry mixed municipal waste (Non-black bag-putrescible waste), source segregated cardboard, plastic & hangers and commercial and domestic dry mixed recyclables. No hazardous waste, putrescible waste or liquid wastes are accepted at the facility.

Ferrous, Non Ferrous, Wood, rubble, soil & stones, plasterboard, green waste and bulky waste are segregated from the incoming waste, in the facility manually and by using a track machine. The remaining mixed waste is then bulked up and sent onward to Panda’s headquarters for processing. Source segregated baled cardboard, baled plastic and boxed plastic hangers are also accepted for bulking up from Dunnes Stores collections nationwide.

There is a dual weighbridge for incoming and outgoing waste.

1.7 Water Usage:

Water for dust suppression, office and amenities use is taken from a well.

Water usage on site consists of:

- In-house road sweeper (daily visits).

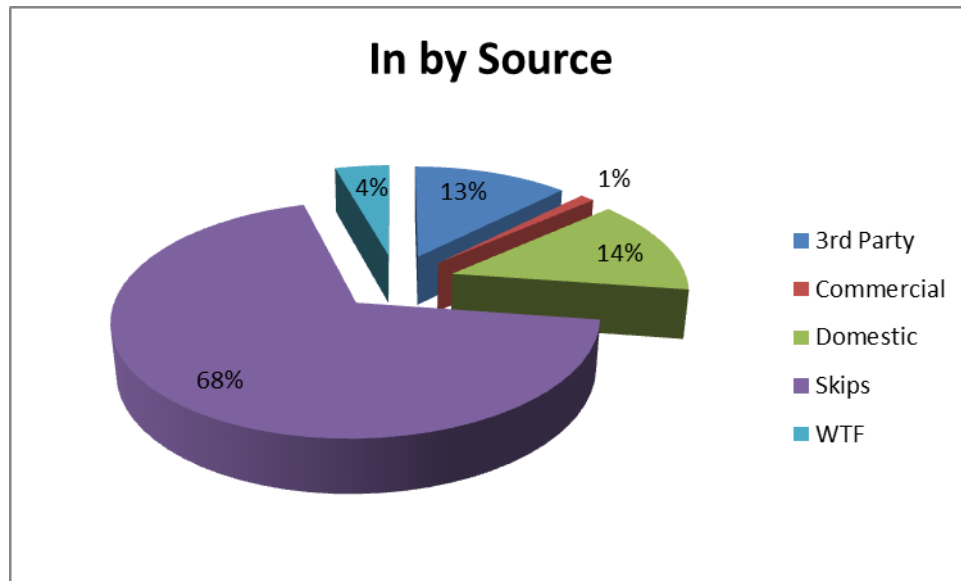
- Dust suppression sprayers in the shed and on the South-western external side of shed (as required)
- Hoses on site for dust suppression.
- Fire Fighting equipment.

2. Summary Information

2.1 Waste Received

The waste received at the facility from the 1st January 2013 to the 31st December 2013 was 69,525.48 tonnes. From the pie chart (Fig 1) it is evident that skip waste is the largest source of Panda's waste acceptance with domestic dry recyclables and 3rd Party waster next largest.

Fig. 1: Waste Collected by Panda by Customer profile.



2.2 Waste Transferred Off-Site for Disposal or Recovery

See Appendix D for the breakdown of the different destinations used for the waste accepted at the facility and of waste removed off site by EWC Code.

2.3 Waste Recovery Reports

To contribute to the Landfill Directive, Panda operates various systems to maximise recovery and recycling with most processing being carried out in the headquarters' facility.

Panda applied to the Agency for a review the current Waste Licence (W0140-03) for the Beauparc facility in September 2009. This review was submitted to the Agency, so that Panda can produce a SRF/RDF product from the residual waste previously sent to Landfill. Panda also reviewed the licence for the purpose of constructing an Anaerobic Digestion/Composting plant. Panda have rolled out a source segregated collection service for biodegradable waste for both household and commercial customers.

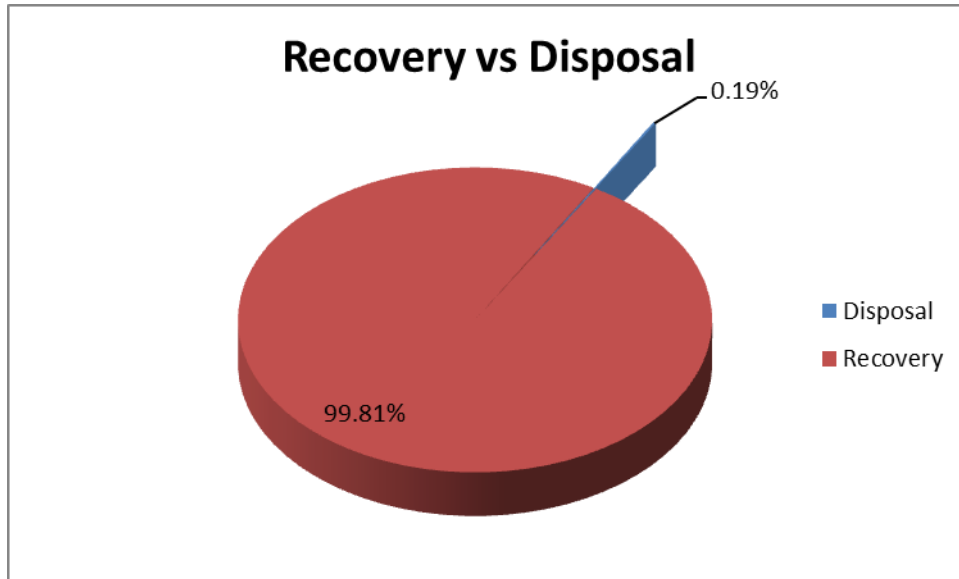
Panda process the mixed C&D waste in the Beauparc facility in building 2, this includes a shredder, trommel, magnet, wind shifter and a picking line so as to divert as much C&D waste away from landfill as possible in order to comply with "A Resource Opportunity, 2012" for landfill diversion. To date the processing of C&D Waste has been extremely successful with the majority of the residual being processed into Solid Recovered Fuel.

Table 1 and Fig. 2 details the recovery rates of waste leaving Panda's facility.

Table 1: Outgoing destination and recovery rate.

Destination	Tonnage
Disposal	137.50
Recovery	72,195.56

Fig. 2: Outgoing destination recovery rate.



2.4 Summary report on emissions and interpretation of environmental monitoring

Under Schedule C of the licence W0261-01, Panda are required to monitor storm water emissions, BMW content of municipal waste dispatched to landfill (Frequency-as specified by the Agency), trade effluent, noise and ambient air monitoring (Dust). The following sub-headings detail the results from independent laboratories of the different parameters and the emission limit values ELV's set by the EPA and any complaints and incident that may have occurred during the year.

2.4.1 Surface Water

Storm water passes through a silt trap and oil interceptor prior to being discharged to the storm water network, which ultimately discharges into a tributary of the Tolka River. The surface water monitoring point is located at the south-eastern corner of the facility at the co-ordinates X/E 310429 Y/N 240420 (SW1).

2.4.2 Dust Emissions

As per schedule B5 for dust deposition limits, there are currently two sampling locations (AD1 and AD2). Monitoring is required bi-annually on site. A dust suppression unit was

installed in the shed to ensure dust emissions from the tipping, sorting and reloading are kept to a minimum. Figs 3&4 illustrate dust recordings for 2013.

Fig. 3: Dust emission results for DS1 (AD1)

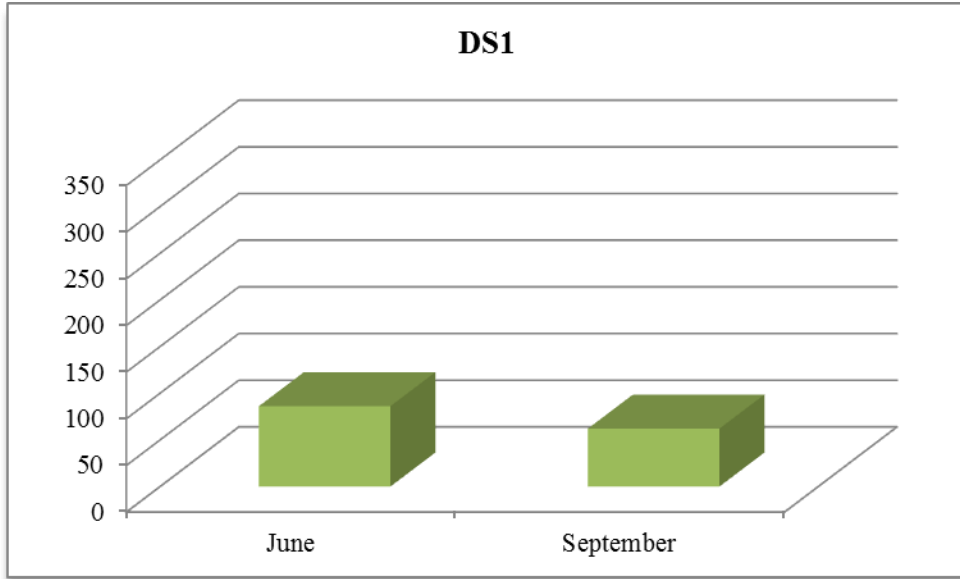
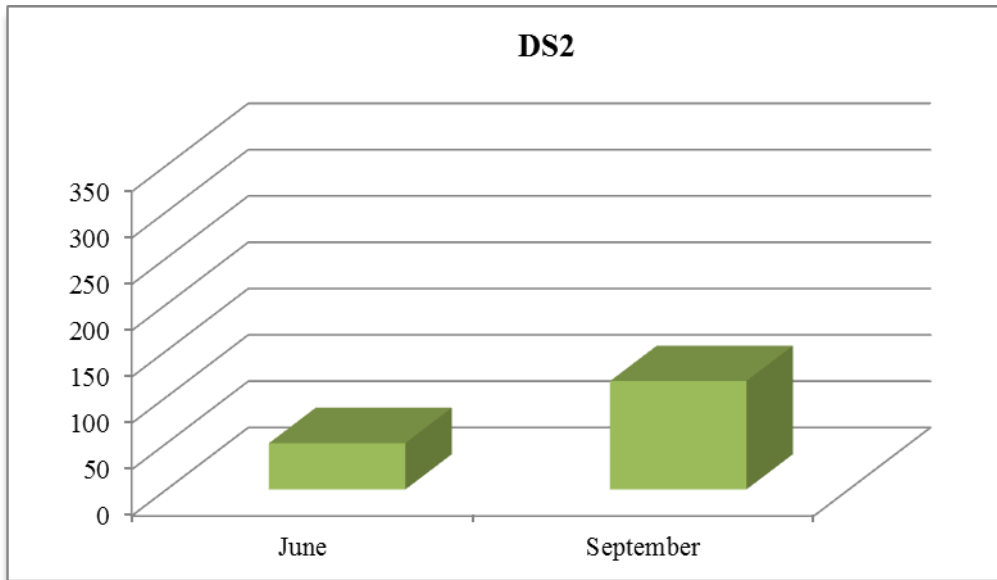


Fig. 4: Dust emission results for DS2 (AD2)



As per Schedule B.5, the dust deposition limit for the site is 350 mg m⁻² d⁻¹. Both AD1 and AD2 are well within licenced ELV's.

2.4.3 Noise Emissions

Noise emissions are monitored according to Schedule B.4 and the emission limit values (ELV) set out in Schedule C.5 of the licence. An independent competent consultant has been commissioned to conduct the noise sampling for the facility. Table 2 details results of noise monitoring conducted on the 28th November 2013.

Table 2. Noise emissions 2013

Location	Leq	L10	L90	Comments
AN1	52.6	55.4	48.7	Main noise emission from facility at 52dBA
AN2	48.6	58.7	49.7	Noise from waste facility
ANSL1	65.4	68.7	48.3	Mainly road traffic noise and waste facility at less than 48dBA
ANSL2	64.1	69.0	43.7	Mainly road traffic noise and waste facility less than 44 dBA

2.4.4 Trade Effluent

As part of the monitoring programme Panda must test the trade effluent sent off site for disposal. Table 3 details results of trade effluent monitoring in 2013. The sample taken on the 11th June 2013, BOD and Mercury were not analysed.

Table 3. Trade effluent monitoring 2013

Parameter	Units	Result 27/03/13	Result 11/06/13	Result 26/09/13	Result 20/12/13
Ammonia	mg/L as N	12.96	29.14	0.068	8.62
Arsenic	ug/L	4.73	23.38	0.538	0
BOD	mg/L	825	NR	0	590
Boron	ug/L	212	396.6	99.52	201.73
Cadmium	ug/L	0.429	1.751	0	0
Chloride	mg/L	93.93	101.04	27.16	248.49
Chromium	ug/L	8.682	128.2	9.268	0
COD	mg/L	1254	1356	7	963
Copper	ug/L	53.45	1659	6.333	22.82
Lead	ug/L	60.96	212.4	1.822	23.93
Mercury	ug/L	0.365	NR	0.121	0.637
Mineral Oil	ug/L	310.9	0	0	375.54
Nickel	ug/L	23.4	84.9	4.461	28.34
pH	pH units	6.8	7.0	7.9	6.7
Selenium	ug/L	0	0	0	0
Sulphate	mg/L as SO ₄	248.75	227.78	94.10	962.84
Suspended Solids	mg/L	252	1635	6	78
Zinc	ug/L	262.3	1808	25.59	148.08

2.4.5 Bund, pipe and underground storage tanks integrity

The integrity and water tightness of all underground pipes, all tanks, bunding structures and containers and their resistance to penetration by water and other materials is required to be carried out every three years and thereafter and reported to the Agency. The bund, pipeline and UST integrity was tested in Q4 of 2012. The integrity of underground pipes, tanks and bunds were tested to be positive.

2.4.6 Summary of resource and energy consumption

Table 4: Summary of Energy Consumption from January 2013 to December 2013.

Resource	
Gas Oil	71,910 Litres
Electricity	172.22 MWhr

2.4.7 Water

Water is obtained from the well located off site.

2.5 Site infrastructure

The following are details on infrastructure in the facility.

2.5.1 In-place

The current site infrastructure is outlined below in List 1. List 2 details the waste processing equipment used on site.

List 1: Current site infrastructure

1. Offices
2. Dual Weighbridge.
3. One x Waste processing building
4. One x Dust suppression system
5. Ancillary ESB building
6. Canteen & toilets.
7. Water Attenuation Tank
8. Oil Interceptor
9. Fuel Depot
10. Fencing around the site

List 2: Waste processing equipment

- 1 x Forklift
- 1 x Moffit with clamps
- 1 x Track machine
- 1 x Volvo Box Truck for hanger sorting

There is sufficient back up within the group if any of the plant listed breaks down.

2.5.2 Planned Infra-structure

Proposed infrastructure is outlined in List 3. It is anticipated that the concrete yards will be completed by the middle of 2014 and the dry recycling building being completed in late 2014.

List 3: Proposed infrastructure:

1. Dry Recycling Building
2. Completion of concrete in yard.

2.6 Progress Report on Proposals Developed to Minimise Water Demand & Trade Effluent Discharge

To minimise the water demand on site, Panda are investigating collecting the rainwater from the roof and using this in the road sweeper to clean the yard.

2.7 PRTR Emission.

Panda's PRTR emission return is provided in Appendix E.

3. Environmental objectives and targets – 2013.

No	Objective & Target	Method of Achievement	Responsibility	2013 Programme	Complete in 2013	2014 Programme
1	Assess the Effectiveness of Nuisance Control Procedures	Continually review and assess all nuisance control procedures to ensure minimal impact on surrounding area	Environmental Manager	Continuous	Complete	July '14
		Ensure yards are cleaned at the end of each working day	Operatives	Continuous	Continuous	Continuous
2	Prevent Water Pollution from Run-Off	Ensure all gullies are maintained and regularly cleaned	Environmental Manager/ Operatives	Continuous	Continuous	Continuous
		Ensure that levels in the trade effluent tank is maintained at an appropriate height	Environmental Manager/Operatives	Continuous	Continuous	Continuous
3	Assess & Review Resource & Energy Consumption at the site	Carry out an energy audit on the site	Environmental Manager	May '11	Complete in '12	2015
4	Maintain and Develop the Environmental Management System	Maintain EMS Documentation on site	Environmental Manager	Continuous	Continuous	Continuous
		Update procedures to reflect operational and control changes				
5	Assess Waste Acceptance Procedures so as to minimise volume of erratic's	Communicate with customers about the items that are not acceptable in the in-coming wastes	Call Centre/Sales Reps	Continuous	Continuous	Continuous
6	Environmental Monitoring	Implement the Environmental Monitoring Programme specified in the Waste Licence	Environmental Manager	Continuous	Continuous	Continuous
		Investigate any accidents of emission limit values	Environmental Manager	Continuous	Continuous	Continuous
7	Ensure and implement a training programme	Identify staff training requirements and provide relevant training	Environmental Dept	May '13	Complete in '13	July '14

	Objective & Target	Method of Achievement	Responsibility	2013 Programme	Complete in 2013	2014 Programme
8	To control any emergencies that may arise at the facility	Review and implement an Emergency Response Procedure	Environmental Manager	May '13	Complete in '13	July '14
9	Prepare a Standard Operating Procedures Manual	Review SOP manual relevant to site operations	Environmental Dept	Aug '11	Complete in '12	July '14
10	Ensure lighting in waste handling buildings provide sufficient lighting so as to assess incoming waste	Clean all light bulbs and covers in waste handling buildings	Environmental Manager/ Yard Supervisor	June '13	Complete in '13	Aug '14
12	Seek approval for the DMR building	Prepare documentation for lodging to the Agency for approval	Environmental Dept and Project manager			July '14
12	Office Recycling	Continuation of office recycling	Office Manager/ Environmental Department	Continuous	Continuous	Continuous
13	Pipe and UST Integrity Test	Carry out a Pipe and Underground Storage Tank Integrity Test	Environmental Manager	Dec '13	Dec '13	2016
14	Pipeline Survey Test	Carrying out a pipe line integrity test	Environmental Manager	July '13	Dec '13	2016

3.1 Summary of reported incidents and complaints

3.1.1 Reported Incidents Summary

No incidents occurred during this licence in 2013.

3.1.2 Complaints:

There was one complaint in 2013. This was fully investigated and closed off in a timely fashion.

3.2 Review of nuisance controls

3.2.1 Odour

There is minimal risk of odour nuisance due to the nature of the waste accepted at the facility. However, fast turnaround times of waste help to prevent any odour nuisances that may occur.

There is a power washer available to wash odorous bins. Each day, the facility manager conducts an inspection of the site. Odour nuisances are included on this inspection.

3.2.2 Noise

The monitoring results showed that noise is not a nuisance, as only minimal plant operates on site.

3.2.3 Dust

A dust suppression system is installed in the shed and on the external (South-western side) of the building. A road sweeper visits the site at a minimum 3 times per week or more frequently if required. Fire hoses are also available to spray water on concreted yards as required.

3.2.4 Vermin

A file on vermin control is maintained in the office. A sub-contractor is used to control any vermin on site.

3.2.5 Flies

Good housekeeping practices are used to prevent fly infestations. The yard is kept clean using a road sweeper and all waste for disposal is removed from the facility within 48 hours, or 72 hours in the case of a bank holiday weekends.

3.2.6 Birds

In order to avoid having birds as a nuisance, litter control is practised at all times, this includes regular litter patrols.

3.2.7 Litter

A designated member of staff carries out litter inspections of the facility twice daily and gathers any litter deposited.

4.0 Development of Procedures on Site

The Emergency Response Procedure (ERP) was reviewed and amended to reflect the changes of the company and update useful contact telephone numbers.

A review of all site procedures was carried out, and the following procedures were developed;

- SOP 21 Filling of fuel tanks and mobile plant.

5.0 Pollution Emission Register

After consulting the PERL list Panda are not using any substance that is listed at present.

6.0 Report on Programme for Public Information

Panda have re-developed their website; one of the features is an Environmental page where the following can be downloaded,

- Facility licences (W0003-03, W0039-02, W0140-03, W0238-01, **W0261-01**, W0263-01)
- Multi-regional Waste collection permit (WCP-DC-09-1188-01),

- Environmental Policy,

Domestic wheelie bin customers can also download their relevant collection calendar and pay bills.

Panda have a news section on the website, with regular updates on collections, offers, etc.

Over the Christmas period 2013 Panda put advertisements in all the local newspapers to inform customers of the schedule of bin collections over the Christmas Period. Panda also issued all domestic customers with a Christmas calendar showing collection days over that period. If there were any change to a domestic route, this would also be advertised in the local media.

In March 2009, Panda commenced SMS messaging to domestic customers regarding their collections. Panda are also encouraging customers to receive email invoicing, thereby reducing dependence on paper invoices and envelopes.

Recycling certificates are issued to customers, on request, so that they can determine their recycling on a weekly/monthly or annual basis.

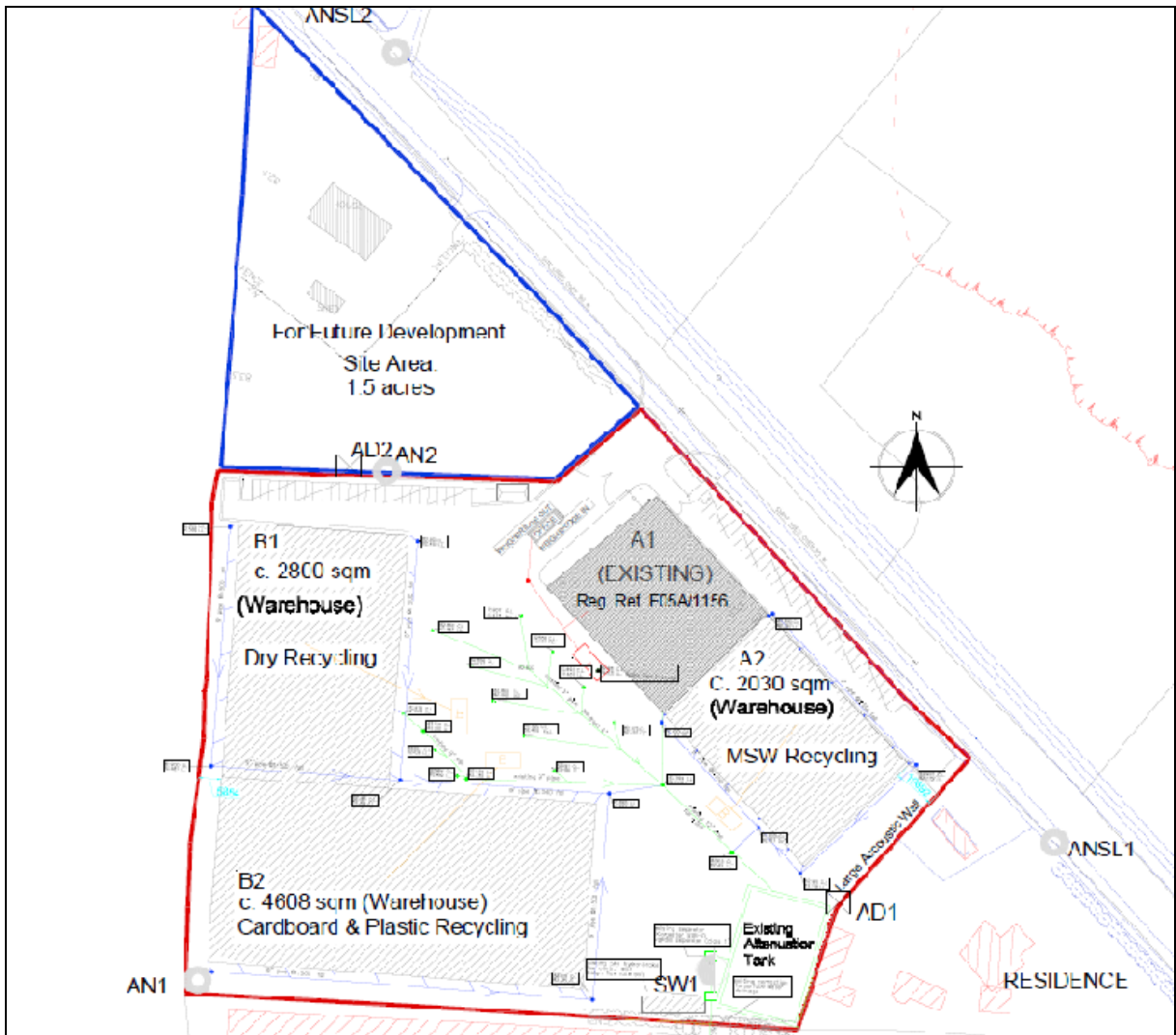
Advertisements are taken out regularly in the local newspapers informing customers of the services that Panda offer. There is also a large advertisement in the golden pages, which is available to the general public. Tours of the facilities are given to schools and to members of the public upon request.

During the reporting period there were no requests from members of the public to inspect any Environmental Records.

The information in the Annual Environmental Report is true and accurate representation of the activities conducted by Panda in 2013.

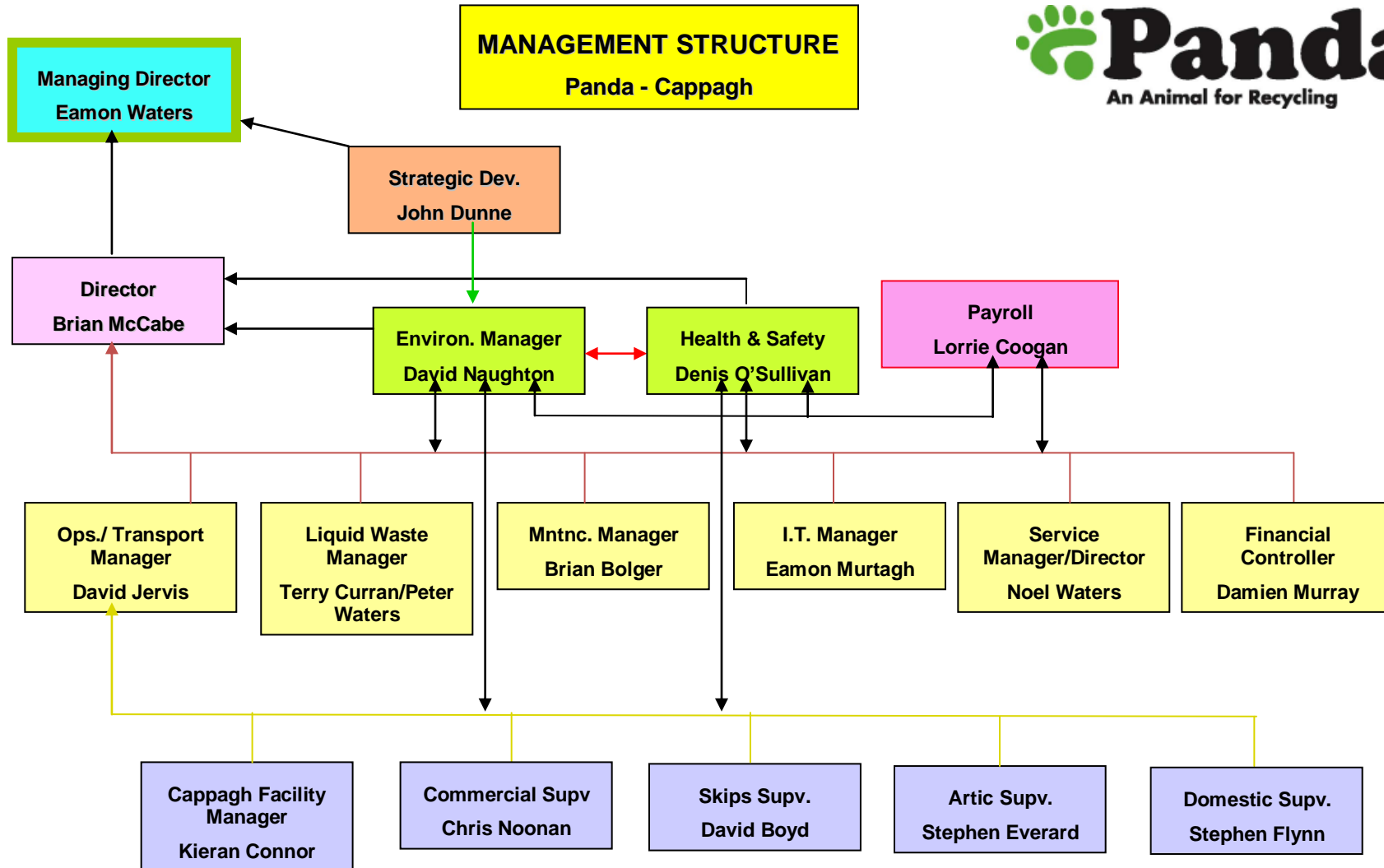
Appendix A

Site Layout



Appendix B

Organisational Structure



Appendix C

Financial Statement



Fagan Lynch Donnellan
Chartered Accountants & Registered Auditors

Our Ref: VL/NMcK

08th January 2014

Environmental Protection Agency,
McCumiskey House,
Richview,
Clonskeagh Road,
Dublin 14.

Re: Nurendale Ltd T/A Panda Waste

Dear Sir,

We act as Accountants and Taxation Agents for the above and have acted in this capacity in excess of 10 years.

We wish to confirm as follows:

1. Statutory Accounts have been filed for all years up to 31.12.2012 with the Companies Office.

Accounts and Tax Returns have also been filed with Inspector of Taxes for all years to 31st December 2012.

2. The Company trades profitably and is on a very sound financial footing.

If you have any queries, please do not hesitate to contact us.

Yours faithfully,


FAGAN LYNCH DONNELLAN

Newbridge House, Athlumney, Navan, Co. Meath
Tel: (046) 9033700 Fax: (046) 9029341 e-mail: info@fld.ie www.fld.ie

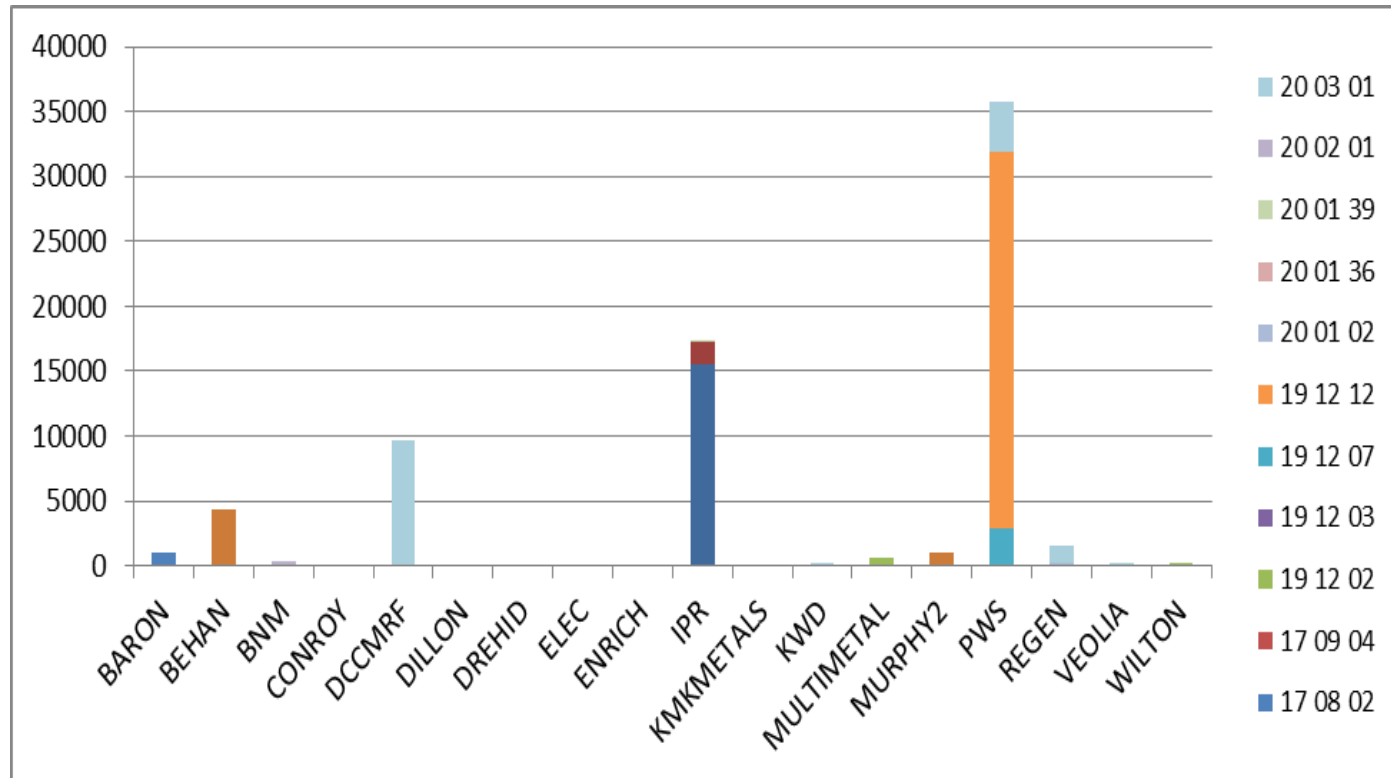
John Fagan FCA Vincent Lynch FCA Mark McCartney FCCA

Registered to carry on audit work and authorised to carry on investment business by the Institute of Chartered Accountants in Ireland (ICAI).
Chartered Accountants Ireland is the operating name of ICAI.




Appendix D

Outgoing by Destination



Appendix E

PRTR Emissions



[PRTR# : W0061 | Facility Name : Nurisdale (Cappagh Road) | Filename : W0061_2013.xls | Return Year : 2013]

[Guidance to completing the PRTR workbook](#)

AER Returns Workbook

Version 1.3.18

REFERENCE YEAR																			
2013																			
1. FACILITY IDENTIFICATION																			
Parent Company Name	Nurisdale Limited																		
Facility Name	Nurisdale (Cappagh Road)																		
PRTR Identification Number	W0061																		
Licence Number	W0061-01																		
Waste or IPPC Classes of Activity																			
	<table border="1" style="width: 100%; border-collapse: collapse;"> <thead> <tr> <th>No.</th> <th>Class name</th> </tr> </thead> <tbody> <tr> <td>4.4</td> <td>Recycling or reclamation of other inorganic materials.</td> </tr> <tr> <td>3.11</td> <td>Blending or mixture prior to submission to any activity referred to in a preceding paragraph of this Schedule.</td> </tr> <tr> <td>3.12</td> <td>Repackaging prior to submission to any activity referred to in a preceding paragraph of this Schedule.</td> </tr> <tr> <td>3.13</td> <td>Storage prior to submission to any activity referred to in a preceding paragraph of this Schedule, other than temporary storage, pending collection, on the premises where the waste concerned is produced.</td> </tr> <tr> <td>4.11</td> <td>Use of waste obtained from any activity referred to in a preceding paragraph of this Schedule.</td> </tr> <tr> <td>4.13</td> <td>Storage of waste intended for submission to any activity referred to in a preceding paragraph of this Schedule, other than temporary storage, pending collection, on the premises where such waste is produced.</td> </tr> <tr> <td>4.2</td> <td>Recycling or reclamation of organic substances which are not used as solvents (including composting and other biological transformation processes).</td> </tr> <tr> <td>4.3</td> <td>Recycling or reclamation of metals and metal compounds.</td> </tr> </tbody> </table>	No.	Class name	4.4	Recycling or reclamation of other inorganic materials.	3.11	Blending or mixture prior to submission to any activity referred to in a preceding paragraph of this Schedule.	3.12	Repackaging prior to submission to any activity referred to in a preceding paragraph of this Schedule.	3.13	Storage prior to submission to any activity referred to in a preceding paragraph of this Schedule, other than temporary storage, pending collection, on the premises where the waste concerned is produced.	4.11	Use of waste obtained from any activity referred to in a preceding paragraph of this Schedule.	4.13	Storage of waste intended for submission to any activity referred to in a preceding paragraph of this Schedule, other than temporary storage, pending collection, on the premises where such waste is produced.	4.2	Recycling or reclamation of organic substances which are not used as solvents (including composting and other biological transformation processes).	4.3	Recycling or reclamation of metals and metal compounds.
No.	Class name																		
4.4	Recycling or reclamation of other inorganic materials.																		
3.11	Blending or mixture prior to submission to any activity referred to in a preceding paragraph of this Schedule.																		
3.12	Repackaging prior to submission to any activity referred to in a preceding paragraph of this Schedule.																		
3.13	Storage prior to submission to any activity referred to in a preceding paragraph of this Schedule, other than temporary storage, pending collection, on the premises where the waste concerned is produced.																		
4.11	Use of waste obtained from any activity referred to in a preceding paragraph of this Schedule.																		
4.13	Storage of waste intended for submission to any activity referred to in a preceding paragraph of this Schedule, other than temporary storage, pending collection, on the premises where such waste is produced.																		
4.2	Recycling or reclamation of organic substances which are not used as solvents (including composting and other biological transformation processes).																		
4.3	Recycling or reclamation of metals and metal compounds.																		
Address 1	Cappagh Road																		
Address 2	Finglas																		
Address 3	Dublin 11																		
Address 4																			
Country	Dublin																		
Country	Ireland																		
Coordinates of Location	-8.33881 53.40272																		
River Basin District	IEEA																		
NACE Code	3832																		
Main Economic Activity	Recovery of sorted materials																		
AER Returns Contact Name	David Naughton																		
AER Returns Contact Email Address	david.naughton@panda.ie																		
AER Returns Contact Position	Environmental Manager																		
AER Returns Contact Telephone Number	01 8298908																		
AER Returns Contact Mobile Phone Number	086 6045905																		
AER Returns Contact Fax Number	046 9024189																		
Production Volume	0.0																		
Production Volume Units																			
Number of Installations	0																		
Number of Operating Hours in Year	0																		
Number of Employees	14																		
User Feedback/Comments	Washdown water from waste storage building. Tankered off site to wwp																		
Web Address																			
2. PRTR CLASS ACTIVITIES																			
Activity Number	Activity Name																		
50.1	General																		
5(a)	Installations for the recovery or disposal of hazardous waste																		
5(c)	Installations for the disposal of non-hazardous waste																		
50.1	General																		
3. SOLVENTS REGULATIONS (S.I. No. 543 of 2002)																			
Is it applicable?	No																		
Have you been granted an exemption?	No																		
If applicable which activity class applies (as per Schedule 2 of the regulations)?																			
Is the reduction scheme compliance route being used?																			
4. WASTE IMPORTED/ACCEPTED ONTO SITE																			
Guidance on waste imported/accepted onto site																			
Do you import/accept waste onto your site for on-site treatment (other recovery or disposal activities)?	No																		
This question is only applicable if you are an IPPC or Quarry site																			

4.1 RELEASES TO AIR

[Link to previous years emissions data](#)

[PRTR : W001 | Facility Name : Nurendale (Cappagh Road) | Filename : W001_2013.xls | Return Year : 2013]

25/04/14 14:28

SECTION A - SECTOR SPECIFIC PRTR POLLUTANTS

POLLUTANT		METHOD			QUANTITY			
No. Annex II	Name	M/G/E	Method Code	Designation or Description	Emission Point 1	T (Total) KG/Year	A (Accidental) KG/Year	F (Fugitive) KG/Year
					0.0	0.0	0.0	0.0

* Select a row by double-clicking on the Pollutant Name (Column 1) then click the delete button

SECTION B - REMAINING PRTR POLLUTANTS

POLLUTANT		METHOD			QUANTITY			
No. Annex II	Name	M/G/E	Method Code	Designation or Description	Emission Point 1	T (Total) KG/Year	A (Accidental) KG/Year	F (Fugitive) KG/Year
					0.0	0.0	0.0	0.0

* Select a row by double-clicking on the Pollutant Name (Column 1) then click the delete button

SECTION C - REMAINING POLLUTANT EMISSIONS (As required in your Licence)

POLLUTANT		METHOD			QUANTITY				
Pollutant No.	Name	M/G/E	Method Code	Designation or Description	Emission Point 1	Emission Point 2	T (Total) KG/Year	A (Accidental) KG/Year	F (Fugitive) KG/Year
210	Dust	M	ALT	Graminity	0.03	0.03	0.06	0.06	0.0

* Select a row by double-clicking on the Pollutant Name (Column 1) then click the delete button

Additional Data Requested from Landfill operators

For the purposes of the National Inventory on Greenhouse Gases, landfill operators are requested to provide summary data on landfill gas (Methane) flared or utilised on their facilities to accompany the figures for total methane generated. Operators should only report their Net methane (CH₄) emission to the environment under T (Total) KG/yr for Section A: Sector specific PRTR pollutants above. Please complete the table below:

Landfill:		Nurendale (Cappagh Road)			
Please enter summary data on the quantities of methane flared and / or utilised		M/G/E	Method Used		Facility Total Capacity m3 per hour
T (Total) kg/Year			Method Code	Designation or Description	
Total estimated methane generation (as per site model)	0.0				N/A
Methane flared	0.0				0.0 (Total Flaring Capacity)
Methane utilised in engine/s	0.0				0.0 (Total Utilising Capacity)
Net methane emission (as reported in Section A above)	0.0				NA

4.2 RELEASES TO WATERS

[Link to previous years emissions data](#)

| PRTR# : W0251 | Facility Name : Nurandale (Cappagh Road) | Filename : W0251_2013.xls | Return Year : 2013 |

25/04/2014 14:28

SECTION A : SECTOR SPECIFIC PRTR POLLUTANTS

Data on ambient monitoring of storm/surface water or groundwater, conducted as part of your licence requirements, should NOT be submitted under AER / PRTR Reporting as this only concerns Releases from your facility

POLLUTANT		METHOD			QUANTITY			
No. Annex II	Name	M/C/E	Method Code	Designation or Description	Emission Point 1	T (Total) KG/Year	A (Accidental) KG/Year	F (Fugitive) KG/Year
						0.0	0.0	0.0

* Select a row by double-clicking on the Pollutant Name (Column B) then click the delete button

SECTION B : REMAINING PRTR POLLUTANTS

POLLUTANT		METHOD			QUANTITY			
No. Annex II	Name	M/C/E	Method Code	Designation or Description	Emission Point 1	T (Total) KG/Year	A (Accidental) KG/Year	F (Fugitive) KG/Year
						0.0	0.0	0.0

* Select a row by double-clicking on the Pollutant Name (Column B) then click the delete button

SECTION C : REMAINING POLLUTANT EMISSIONS (as required in your Licence)

POLLUTANT		METHOD			QUANTITY			
Pollutant No.	Name	M/C/E	Method Code	Designation or Description	Emission Point 1	T (Total) KG/Year	A (Accidental) KG/Year	F (Fugitive) KG/Year
						0.0	0.0	0.0

* Select a row by double-clicking on the Pollutant Name (Column B) then click the delete button

4.3 RELEASES TO WASTEWATER OR SEWER

[Link to previous years emissions data](#)

| PRTR# : W0251 | Facility Name : Nurandale (Cappagh Road) | Filename : W0251_2013.xls | Return

25/04/2014 14:28

SECTION A : PRTR POLLUTANTS

POLLUTANT		METHOD			QUANTITY			
No. Annex II	Name	M/C/E	Method Code	Designation or Description	Emission Point 1	T (Total) KG/Year	A (Accidental) KG/Year	F (Fugitive) KG/Year
06	Ammonia (NH3)	M	ALT	Colorimetry		0.0	0.0	0.0
17	Arsenic and compounds (as As)	M	ALT	ICPMS		0.0	0.0	0.0
18	Cadmium and compounds (as Cd)	M	ALT	ICPMS		0.0	0.0	0.0
19	Chromium and compounds (as Cr)	M	ALT	ICPMS		0.0	0.0	0.0
20	Copper and compounds (as Cu)	M	ALT	ICPMS		0.0	0.0	0.0
23	Lead and compounds (as Pb)	M	ALT	ICPMS		0.0	0.0	0.0
21	Mercury and compounds (as Hg)	M	ALT	ICPMS		0.0	0.0	0.0
22	Nickel and compounds (as Ni)	M	ALT	ICPMS		0.0	0.0	0.0
24	Zinc and compounds (as Zn)	M	ALT	ICPMS		0.0	0.0	0.0
79	Chlorides (as Cl)	M	ALT	Colorimetry		0.01	0.0	0.0

* Select a row by double-clicking on the Pollutant Name (Column B) then click the delete button

SECTION B : REMAINING POLLUTANT EMISSIONS (as required in your Licence)

POLLUTANT		METHOD			QUANTITY			
Pollutant No.	Name	M/C/E	Method Code	Designation or Description	Emission Point 1	T (Total) KG/Year	A (Accidental) KG/Year	F (Fugitive) KG/Year
303	BOD	M	ALT	Electrometry		0.04	0.04	0.0
374	Boron	M	ALT	ICPMS		0.0	0.0	0.0
306	COD	M	ALT	Colorimetry		0.09	0.0	0.0
324	Mineral oils	M	SSC	GC-FID		0.0	0.0	0.0
370	Selenium	M	ALT	ICPMS		0.0	0.0	0.0
240	Suspended Solids	M	ALT	Filtration/Drying@104C		0.07	0.0	0.0
343	Sulphate	M	ALT	Colorimetry		0.02	0.0	0.0

* Select a row by double-clicking on the Pollutant Name (Column B) then click the delete button

4.4 RELEASES TO LAND

[Link to previous years emissions data](#)

[PRTR# : W0261 | Facility Name : Nurondale (Cappagh Road) | Filename : W0261_2013.xls | Return Year : 2013]

25/04/2014 14:28

SECTION A : PRTR POLLUTANTS

POLLUTANT		RELEASURES TO LAND			Please enter all quantities in this section in KGs		
No. Annex II	Name	M/C/E	METHOD		Emission Point 1	QUANTITY	
			Method Code	Method Used Designation or Description		T (Total) KG/Year	A (Accidental) KG/Year
					0.0	0.0	0.0

* Select a row by double-clicking on the Pollutant Name (Column B) then click the delete button

SECTION B : REMAINING POLLUTANT EMISSIONS (as required in your Licence)

POLLUTANT		RELEASURES TO LAND			Please enter all quantities in this section in KGs		
Pollutant No.	Name	M/C/E	METHOD		Emission Point 1	QUANTITY	
			Method Code	Method Used Designation or Description		T (Total) KG/Year	A (Accidental) KG/Year
					0.0	0.0	0.0

* Select a row by double-clicking on the Pollutant Name (Column B) then click the delete button

5 ONSITE TREATMENT & OFFSITE TRANSFERS OF WASTE (19/108 - 02/201) (Facility Name: Nuranda Copping Road) (Phase: W0201_2013-16) (Report Year: 2013)

20/03/2014 14:30

Please enter all quantities on this sheet in Tonnnes

Transfer Destination	European Waste Code	Hazardous	Quantity (Tonnes per Year)	Description of Waste	Waste Treatment Operation	Method Used		Location of Treatment	Site Name, Name and Address of Facility, Name and Address of Parent Company	Site Name, Address of Facility, Name and Address of Parent Company	Name and Contact Person, Name and Address of Parent Company (SEE W0201/01/02/03/04/05)	Local Address of Post/Dispatch (SEE W0201/01/02/03/04/05)
						M/GC	Method Used					
Within the Country	15 01 01	No	1550.44	paper and cardboard packaging	R12	M	Weighted	Offsite in Ireland	Irish Packaging Recycling Ltd W0203-01	Lower Ballymount Road, Walkinstown, Dublin 12, Ireland		
Within the Country	15 01 01	No	0.0	paper and cardboard packaging	R12	M	Weighted	Offsite in Ireland	Panda News, W0140-03	Rathbragg, Deerpark, Newry, Co. Meath, Ireland		
Within the Country	15 01 02	No	1022.74	plastic packaging	R12	M	Weighted	Offsite in Ireland	Irish Packaging Recycling Ltd W0203-01	Lower Ballymount Road, Walkinstown, Dublin 12, Ireland		
Within the Country	16 01 03	No	0.0	end-of-life tyres	R1	M	Weighted	Offsite in Ireland	Indaver, W0107	Carneshill, Duik, Co. Meath, Ireland		
Within the Country	19 12 02	No	548.21	ferrous metal	R12	M	Weighted	Offsite in Ireland	Multimetals, WFP-WW-09-0014-01	Conway Port Industrial Estate, Clonsilla, Marongh, Co. Wick, Ireland		
Within the Country	19 12 07	No	2790.34	wood other than that mentioned in 19 12 06	R12	M	Weighted	Offsite in Ireland	Nuranda, W 0140-03	Park, Newry, Co. Meath, Ireland		
Within the Country	19 12 10	No	0.0	SIF ¹ other wastes (including mixtures of materials) from mechanical treatment of wastes other than those mentioned in 19 12 12	R1	M	Weighted	Offsite in Ireland	Lagan Cement, T0407	Westmeath, , Ireland		
Within the Country	19 12 12	No	29275.43	11	R12	M	Weighted	Offsite in Ireland	Nuranda, W 0140-03	Deerpark, Newry, Co. Meath, Ireland		
Within the Country	19 12 12	No	0.0	PDF	R12	M	Weighted	Offsite in Ireland	Panda News, W0140-03	Rathbragg, Deerpark, Newry, Co. Meath, Ireland		
Within the Country	20 01 30	No	129.34	plastics	R12	M	Weighted	Offsite in Ireland	Irish Packaging Recycling W0203-01	Lower Ballymount Road, Walkinstown, Dublin 12, Ireland		
Within the Country	20 03 01	No	38.24	mixed municipal waste	R10	M	Weighted	Offsite in Ireland	Nuranda, W 0026-02	Cross, Tallaght, Dublin 24, Ireland		
Within the Country	20 03 01	No	0.0	mixed municipal waste	D1	M	Weighted	Offsite in Ireland	Whitaker Landfill, W0050-02	Dunker, Co. Louth, , Ireland		
Within the Country	20 03 01	No	9029.56	Dry Recyclables	R12	M	Weighted	Offsite in Ireland	Dublin City Council MRF W 0226-01	Park, Ballymount, Dublin 12, Ireland		
Within the Country	20 03 01	No	127.52	Dry Recyclables	R12	M	Weighted	Offsite in Ireland	Offsite waste and recycling, WFP KY 10-001	The Kernes, Tullane, Co. Kerry, Ireland		
Within the Country	20 03 01	No	0.0	Dry Recyclables	R12	M	Weighted	Offsite in Ireland	Irish Packaging Recycling Ltd W0203-01	Lower Ballymount Road, Walkinstown, Dublin 12, Ireland		
Within the Country	20 03 01	No	236.32	Dry Recyclables	R12	M	Weighted	Offsite in Ireland	Kilbenny Waste Disposal, W0217-01	Aughacumen, Kilmaree, Co. Kerry, Ireland		
Within the Country	20 03 01	No	0.0	Dry Recyclables	R10	M	Weighted	Offsite in Ireland	Panda News, W0140-03	Rathbragg, Deerpark, Newry, Co. Meath, Ireland		
To Other Countries	20 03 01	No	1290.07	Dry Recyclables	R12	M	Weighted	Abroad	Regen, 44110	Shephards Drive, Cambria Industrial Estate, Newry, Co. Down, BT26 6JQ, United Kingdom		
Within the Country	20 03 01	No	0.0	Dry Recyclables	R12	M	Weighted	Offsite in Ireland	Thomson Recycling WFP-02-10-0021-02	Unit 51 Henry Road, Park West Business Park, Dublin 12, Ireland		
Within the Country	20 03 01	No	0.0	mixed municipal waste	R1	M	Weighted	Offsite in Ireland	Indaver, W0107	Carneshill, Duik, Co. Meath, Ireland		
Within the Country	20 03 01	No	3700.47	mixed municipal waste	R12	M	Weighted	Offsite in Ireland	Nuranda, W 0140-03	Deerpark, Newry, Co. Meath, Ireland		
Within the Country	15 01 01	No	16.40	paper and cardboard packaging	R12	M	Weighted	Offsite in Ireland	Dublin City Council MRF W 0226-01	Marywell Business Park, Ballymount, Dublin 12, Ireland		
Within the Country	15 01 03	No	9.94	wooden packaging	R12	M	Weighted	Offsite in Ireland	Conry Recycling Company Ltd WFP-WH-2009-0020-01	Sons, Slane, Mullingar, Co. Westmeath, Ireland		
Within the Country	16 01 03	No	7.18	end-of-life tyres	R12	M	Weighted	Offsite in Ireland	Irish Packaging Recycling W0203-01	Lower Ballymount Road, Walkinstown, Dublin 12, Ireland		
Within the Country	17 02 01	No	13.94	wood soil and stones other than those mentioned in 17 02 03	R12	M	Weighted	Offsite in Ireland	Nuranda, W 0140-03	Deerpark, Newry, Co. Meath, Ireland		
Within the Country	17 05 04	No	4342.32	in 17 05 03	R10	M	Weighted	Offsite in Ireland	Behrens Land Reclamation Ltd W0247-01	Blackhall, Panchestown, Newry, Co. Kildare, Ireland		
Within the Country	17 05 04	No	1229.69	soil and stones other than those mentioned in 17 05 03	R10	M	Weighted	Offsite in Ireland	Muddy Environmental W0126-01	Hollywood Green, Nags Head, The Naas, Co. Dub, Ireland		
To Other Countries	17 06 02	No	656.58	gypsum-based construction materials other than those mentioned in 17 06 01	R12	M	Weighted	Abroad	Sarm Recycling Ltd, N 07042	31 The Dale, Cooltown Co. Tyrone, BT20 3TF, United Kingdom		
Within the Country	17 06 02	No	36.0	gypsum-based construction materials other than those mentioned in 17 06 01	R12	M	Weighted	Offsite in Ireland	Nuranda, W 0140-03	Deerpark, Newry, Co. Meath, Ireland		
Within the Country	17 06 04	No	19.02	construction and demolition wastes other than those mentioned in 17 06 01, 17 06 02 and 17 06 03	R12	M	Weighted	Offsite in Ireland	Nuranda, W 0140-03	Deerpark, Newry, Co. Meath, Ireland		
Within the Country	19 12 02	No	18.2	ferrous metal	R12	M	Weighted	Offsite in Ireland	Electrical Waste Management Ltd WFP-05-09-0012-01	Block 402 Jordanstown Drive, Greenogue Industrial Estate, Rathcoola, Co. Dublin, Ireland		
Within the Country	19 12 02	No	9.19	ferrous metal	R12	M	Weighted	Offsite in Ireland	Nuranda, W 0140-03	Deerpark, Newry, Co. Meath, Ireland		
Within the Country	19 12 02	No	201.04	ferrous metal	R12	M	Weighted	Offsite in Ireland	Wilson Waste Recycling Ltd WFP-CN-10-2025-01(1)	Kilbegh, Crossabugh, Bellemead, Co. Down, Ireland		
Within the Country	19 12 03	No	1.5	non-ferrous metal	R12	M	Weighted	Offsite in Ireland	Nuranda, W 0140-03	Deerpark, Newry, Co. Meath, Ireland		
To Other Countries	20 01 02	No	203.26	glass	R12	M	Weighted	Abroad	Regen, 44110	Shephards Drive, Cambria Industrial Estate, Newry, Co. Down, BT26 6JQ, United Kingdom		
Within the Country	20 01 36	No	46.24	discarded electrical and electronic equipment other than those mentioned in 20 01 35	R12	M	Weighted	Offsite in Ireland	IGM Metals Recycling Ltd W0119-02	Capprour Industrial Estate, Dangan Road, Tuberna, Co. Offaly, Ireland		
Within the Country	20 02 01	No	300.04	biodegradable waste	R0	M	Weighted	Offsite in Ireland	Bord na Mona, W0190-01	Kilbegh, Athy, Co. Kildare, Ireland		
Within the Country	20 02 01	No	55.5	biodegradable waste	R0	M	Weighted	Offsite in Ireland	Enrich WFP-MH-06-0004-02	Leach Hill, Slane, Newry, Co. Meath, Ireland		
Within the Country	20 02 01	No	16.16	biodegradable waste	R10	M	Weighted	Offsite in Ireland	Nuranda, W 0026-02	Ballymount Cross, Tallaght, Dublin 24, Ireland		
Within the Country	20 03 01	No	137.5	mixed municipal waste	D1	M	Weighted	Offsite in Ireland	Bord na Mona District W 0201-02	Century, Co. Kildare, , Ireland		

¹ Data is now by double-adding for Composites/Waste from other than the table below