



ANNUAL ENVIRONMENTAL REPORT
FOR GREENSTAR LTD
GREENOGUE MATERIALS RECOVERY FACILITY
LICENCE NO. W0188-01
JANUARY 2013 – DECEMBER 2013

Prepared For: -

Greenstar Ltd.,
Unit 6,
Ballyogan Business Park,
Ballyogan Road,
Sandyford,
Dublin 18.

Prepared By: -

O' Callaghan Moran & Associates,
Granary House,
Rutland Street,
Cork.

31st March 2014

Project	Annual Environmental Report 2013			
Client	Greenstar Ltd. W0188-01			
Report No	Date	Status	Prepared By	Reviewed By
0480905	25/03/2014	Draft	Barry Sexton MSc.	Michael Watson MA MCIWM.
0480905	31/03/2014	Final	Barry Sexton MSc.	Michael Watson MA MCIWM.

TABLE OF CONTENTS

	<u>PAGE</u>
1. INTRODUCTION.....	1
2. SITE DESCRIPTION	2
2.1 SITE LOCATION & LAYOUT	2
2.2 WASTE MANAGEMENT ACTIVITIES	2
2.2.1 <i>Waste Types & Processes</i>	2
2.2.2 <i>Plant List</i>	4
3. EMISSION MONITORING	5
3.1 SURFACE WATER MONITORING	5
3.2 WASTEWATER MONITORING	6
3.3 NOISE SURVEY	8
3.4 DUST MONITORING	9
4. SITE DEVELOPMENT WORKS	12
4.1 SPECIFIED ENGINEERING WORKS	12
4.2 SUMMARY OF RESOURCE & ENERGY CONSUMPTION	12
4.3 TANK & PIPELINE INTEGRITY TESTING	13
5. WASTE RECEIVED AND CONSIGNED FROM THE FACILITY	14
6. ENVIRONMENTAL INCIDENTS AND COMPLAINTS	18
6.1 INCIDENTS	18
6.2 REGISTER OF COMPLAINTS.....	18
7. ENVIRONMENTAL DEVELOPMENT	19
7.1 ENVIRONMENTAL MANAGEMENT PROGRAMME REPORT	19
7.1.1 <i>Site Management Structure</i>	19
7.1.2 <i>Staff Training</i>	20
7.2 ENVIRONMENTAL MANAGEMENT PROGRAMME PROGRESS REPORT & PROPOSAL....	20
7.2.1 <i>Schedule of Objectives 2013 –Progress Report</i>	20
7.2.2 <i>Schedule of Objectives 2014 – Proposal</i>	20
7.3 COMMUNICATIONS PROGRAMME	24
7.4 NUISANCE CONTROLS	24
7.5 WASTE RECOVERY REPORT	25
7.6 ELRA & REPORT ON FINANCIAL PROVISION	25
7.7 WASTEWATER VOLUME PRODUCED AND TRANSPORTED OFF-SITE	25
8. OTHER REPORTS.....	26
8.1 EUROPEAN POLLUTANT RELEASE AND TRANSFER REGISTER.....	26

APPENDIX 1 European Pollutant Release and Transfer Register

APPENDIX 2 Procedures List

1. INTRODUCTION

This is the 2013 Annual Environmental Report (AER) for the Greenstar Ltd. (Greenstar), Materials Recovery & Transfer facility (MRF) at Site 14B, Phase 3, Road 3A, Greenogue Industrial Estate, Rathcoole, County Dublin. It covers the period from the 1st January 2013 to the 31st December 2013. During the reporting period, Greenstar was in receivership but ownership of the company and transfer of the licence to Starrus Eco Holdings Ltd (trading as Greenstar) was completed in March 2014.

The content is based on Schedule B of the Waste Licence (Reg. No. W0188-01) and the report format follows guidelines set in the “Guidance Note for Annual Environmental Report” issued by the Environmental Protection Agency (Agency)¹. Account is also taken of the AER Draft Guidance Document and AER Information Templates issued by the Agency in January 2013².

¹ EPA (Environmental Protection Agency) 1999 Waste Licensing – Draft Guidance on Environmental Management Systems and Reporting to the Agency

² EPA (Environmental Protection Agency) 2012 Draft AER Guidance Document

2. SITE DESCRIPTION

2.1 Site Location & Layout

The site, which encompasses an area of 0.603 ha, is located within the Greenogue Industrial Estate, Rathcoole, Co Dublin. The facility comprises one waste transfer building and ancillary infrastructure, including administration offices, weighbridge, vehicle wash and paved open yard areas.

2.2 Waste Management Activities

The licence allows Greenstar to accept and process up to 95,000 tonnes of waste per annum consisting of non-hazardous Commercial & Industrial (C&I), Construction and Demolition (C&D) and Household waste. All waste processing takes place inside the waste transfer building as specified in Condition 5.1 of the licence.

2.2.1 Waste Types & Processes

The facility is licensed to accept the following waste types and quantities, as specified in Schedule A of the licence: -

- Household (15,000 tonnes),
- Commercial (37,500 tonnes),
- Industrial (5,000 tonnes),
- Construction & Demolition (37,500 tonnes).

The maximum tonnage of each waste type accepted, may be altered with the prior agreement of the Agency as long as the total maximum tonnage is not exceeded.

The key processes carried out at the facility include: -

- Segregation of C&I into different waste streams (paper, cardboard, glass, metal, green waste and wood) for further recovery at an appropriate facility
- Segregation of C&D into clean & dirty waste streams for further recovery purposes

- Bulking up of domestic wastes (mixed municipal waste & dry mixed recyclables) for further recovery or disposal at an appropriate off-site facility.

Household Waste

All waste accepted at the facility is unloaded within the existing waste transfer building. Mixed wastes are emptied at separate bays to pre-segregated wastes. All waste intake is inspected for unsuitable material and if any is identified, it is transferred to a dedicated waste quarantine area.

Residual or black bin waste is generally delivered to the facility in refuse collection vehicles and is transferred to large bulk transporters before onward transfer to an appropriate licensed disposal or recovery facility. Separately collected dry recyclable waste is stored separately and bulked before removal off-site to authorised waste recovery facilities. Segregated biodegradable wastes suitable for composting are stored separately in sealed container pending removal off-site to an authorised composting facility.

Greenstar also provides a skip hire service to private individuals. All skips arriving at the facility are netted or covered. Recyclable material is segregated, where possible, from the residual-type waste and is transferred off-site to suitable licensed or permitted recycling facilities.

Commercial and Industrial Waste

Greenstar provides skips and bins of varying sizes to a wide range of commercial and industrial premises. Recyclable material collected from commercial customers (paper, cardboard, glass, metal, green waste and wood) is stored separately from the general waste stream and is bulked prior to transfer to suitable recycling facilities. The remaining non-recyclable and residual material is sent to licensed landfills. Biodegradable waste is stored separately in a sealed container prior to dispatch to an authorised treatment facility.

Construction and Demolition Waste

Construction and demolition material arrives on-site in skips of varying sizes. The loads are inspected and segregated on-site. Recoverable materials are extracted and sent off-site either for re-use or recycling. The non-recyclable materials are transferred to a licensed landfill.

2.2.2 Plant List

A list of the plant in use at the facility is given in Table 2.1. The plant provides 100% duty and 50% standby for waste processing.

Table 2.1 Existing Plant

No.	Plant	Model	Operational Capacity
1	Loading Shovel	Volvo	70t/hr
1	Fork Lift	Toyota	60 hr/wk
1	Grab	Fuchs	70t/hr
1	Weighbridge – 2 scales	Avery Berkel	60

3. EMISSION MONITORING

Greenstar implements a comprehensive environmental monitoring programme to assess the significance of emissions from site activities. The programme includes surface water, wastewater, noise and dust monitoring. The monitoring locations are shown on Figure 3.1 and 3.2. The results are reported to the Agency at quarterly intervals. An overview of the monitoring results is presented in this Section, with summary data included.

3.1 Surface Water Monitoring

Surface water run-off is confined to run-off from the roofed area of the waste transfer building and run-off from some of the paved yards and is completely dependent on rainfall. Prior to discharge the surface water is treated by a Class 1 petrol/oil interceptor which is maintained regularly throughout the year.

The sampling and analysis was carried out in accordance with recognised quality assurance and control procedures. The range of analysis included Biological Oxygen Demand (BOD), Chemical Oxygen Demand (COD), suspended solids (TSS), pH, electrical conductivity, mineral oils, total nitrogen and total ammonia. The results are presented in Table 3.1, which includes the trigger levels and Emission Limit Values (ELVs) set in the licence. The routine monitoring results confirm 100% compliance with the ELVs.

The ammonia levels were elevated during the reporting period and were also elevated in 2012. The source of the ammonia was suspected to be a number of surface water gullies located close to the truckwash/front door of the MRF building and therefore Greenstar carried out upgrades to the surface and foul water drainage systems including the diversion of three critical surface water gullies to the waste water system in 2013. Greenstar has carried out jetting and cleaning of interceptors and surface water drains on site throughout 2013. No other source of the elevated levels of ammonia was identified on site however the levels were at their lowest level in Q4 2013.

Table 3.1 Surface Water Monitoring Results 2013

Parameter	Units	Q1	Q2	Q3	Q4	Trigger Levels	Emission Limit
pH	pH units	7.52	7.34	7.66	6.13	N/A	N/A
Temperature	°C	6.5	8.9	8.5	7.9	N/A	N/A
Conductivity	mS/cm	0.540	0.754	0.398	0.501	N/A	N/A
Total Ammonia	mg/l	3.62	6.92	11.04	2.78	N/A	N/A
BOD	mg/l	11	3	7	10	25	N/A
COD	mg/l	30	19	28	29	N/A	N/A
Total Suspended Solids	mg/l	6	5	<10	27	35	N/A
Total Nitrogen	mg/l	<10	<10	5.5	NDP	N/A	N/A
Mineral Oils	mg/l	<0.001	<0.001	<0.001	<0.001	N/A	5

N/A – None Available

NDP – No determination possible due to insufficient sample

3.2 Wastewater Monitoring

Waste water is generated from vehicle washing at the facility and from the floor of the MRF building. The wash water is directed to a silt trap and then to a petrol/oil interceptor before discharging to the municipal foul sewer.

The sampling and analysis was carried out in accordance with recognised quality assurance and control procedures. The range of analysis included BOD, COD, suspended solids, pH, ammoniacal nitrogen, sulphate, fats, oils and greases and detergents. The samples were compared to the ELVs set in the licence. The results, which are presented in Table 3.2, confirmed 100% compliance with the ELVs.

South Dublin County Council (SDCC) carried out waste water monitoring in August and October 2013. The results, which are presented in Table 3.2, confirmed 100% compliance with the ELVs.

Table 3.2 Wastewater Monitoring Results 2013

Parameter	Units	Feb 2013	May 2013	June 2013	Aug 2013	Oct 2013	Dec 2013	SDCC Result August 2013	SDCC Result October 2013	Emission Limit
pH	pH units	6.79	5.09	6.12	6.69	6.59	6.33	6.7	6.7	6 – 10
Temperature	°C	4.1	8.1	10.1	8.9	7.1	8.2	-	-	42
Sulphate	mg/l	<0.05	113.6	215.8	2.63	48.5	45.16	-	-	1,000
BOD	mg/l	563	1,503	774	199	312	575	406	363	3,000
COD	mg/l	915	2,220	1950	440	660	895	1,365	690	6,000
Total Suspended Solids	mg/l	96	208	504	199	164	48	1,000	157	2,000
Oils, Fats & Greases	mg/l	<0.01	25.8	35.4	<0.001	19.3	<0.01	100	12	100
Ammoniacal Nitrogen	mg/l	21.34	22.84	22.27	28.75	13	11.99	-	-	100
Detergents (as MBAS)	mg/l	1.2	0.03	0.14	0.4	1.58	0.5	-	-	100

3.3 Noise Survey

The annual noise survey was conducted on the 28th August 2013 at three on-site, N-1, N-2 and N-3 as well as one off-site noise sensitive location, NSL-1. The ELV specified in the licence (55 dB (A)) LA_{eq} (30 minutes)) relates only to NSL-1. The full monitoring report was submitted to the Agency in September 2013.

The survey was conducted when the site was fully operational and the results confirmed that the facility was in full compliance with its licence requirements. Noise emissions from the facility were not audible above at the nearest noise sensitive location. The results are included on Table 3.3.

Table 3.3 Noise Monitoring Results 2013

Station	Time	L _{Aeq} 30 min dB	L _{AF10} 30 min dB	L _{AF90} 30 min dB	Specific level* dB	Noise audible
N1	1513- 1543	57	59	49	56	Greenstar mobile plant and trucks clearly audible, although significantly quieter than at N2 or N3 due to screening by trucks, trailers and skips. Power washing near S boundary also audible at low level. Onsite bird scarer device (bird call playback) clearly audible 1526-1530. Offsite emissions audible from industrial estate traffic, aircraft, and significant intrusion from tying strap blowing in breeze at adjacent premises. Offsite bird scarer devices (crow bangers) or gunshots repeatedly audible to N.
N2	1439- 1509	66	67	56	66	Greenstar mobile plant and truck movements in building and on yards continuously dominant. No other noise audible apart from repeated bird scarer devices or gunshots offsite to N. Onsite bird scarer device audible and significant 1501-1505.
N3	1406- 1436	57	61	46	57	Mobile plant in Greenstar building almost continuously audible and dominant. Truck movements in building and on yard also audible. Onsite bird scarer device intermittently audible. Occasional emissions clearly audible from premises beyond boundary. Bird song/calls significant. Offsite bird scarer devices or gunshots clearly audible repeatedly to N.
NSL1	1556-	62	65	40	<40	No Greenstar emissions specifically

	1426					discernible in industrial estate emissions audible at low level. Intermittent passing road traffic dominant when present. Distant traffic also audible at low level. Several bird scarer devices (crowbangers) or gunshots repeatedly audible several hundred metres N. Several low altitude airplane passes intrusive when present.
--	------	--	--	--	--	--

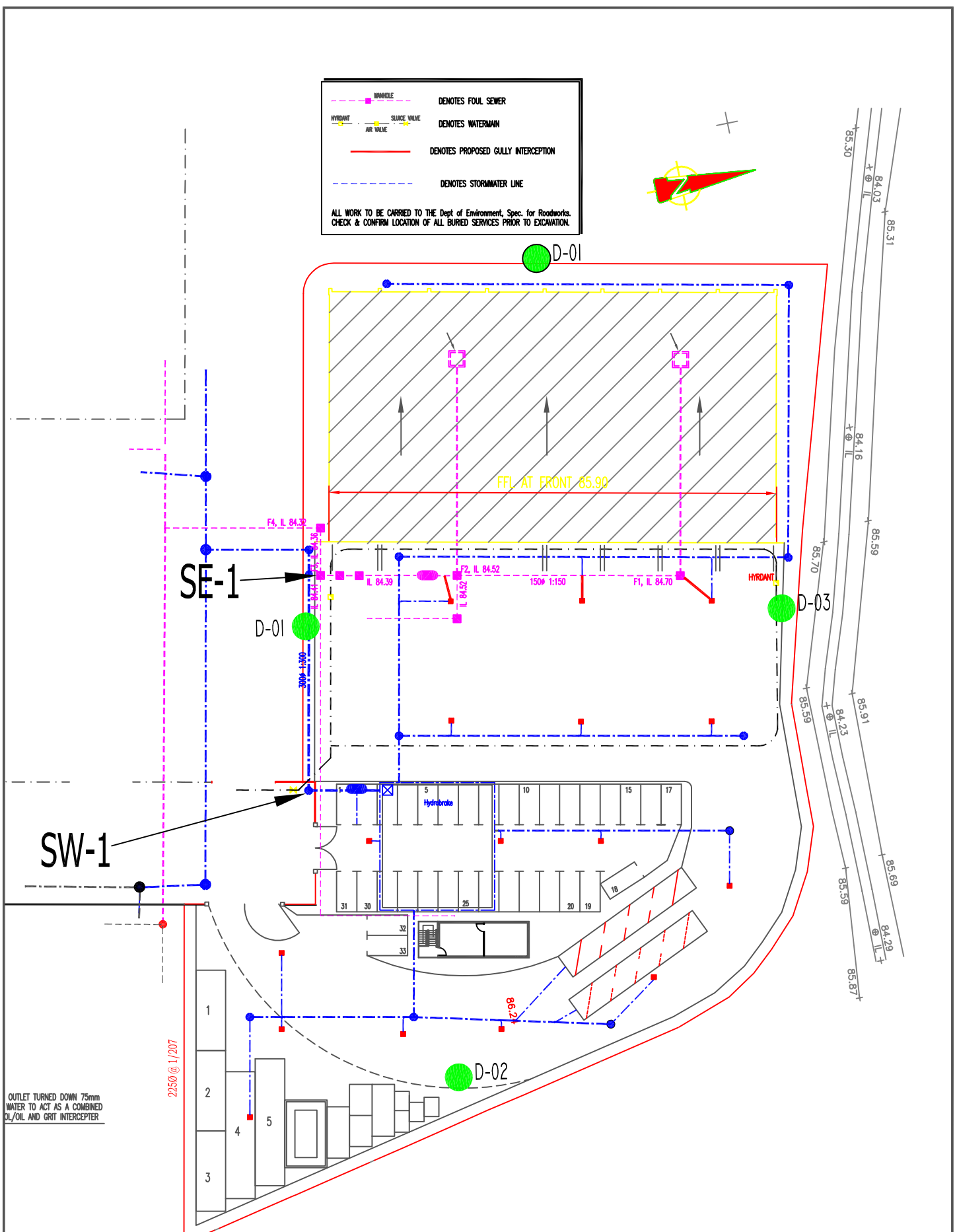
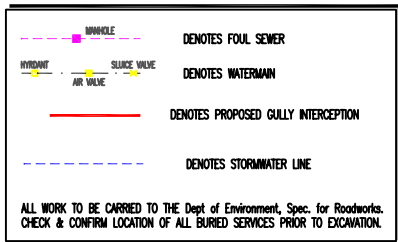
*Specific level: L_{Aeq} level considered attributable to facility during interval, determined using real time assessment, field notes, time history profiles, statistical analysis, frequency spectra, spectral statistics and near field correction if applicable.

3.4 Dust Monitoring

Dust monitoring was carried out on three occasions at four on-site locations (DS-01, DS-02, DS-03 and DS-04) in June, August and December 2013. The results of the monitoring are included on Table 3.4. There was 100% compliance with the dust deposition limit set in the licence ($350 \text{ mg/m}^2/\text{day}$).

Table 3.4 Dust Monitoring Results 2013

Location	May – June $\text{mg/m}^2/\text{day}$	June - July $\text{mg/m}^2/\text{day}$	November $\text{mg/m}^2/\text{day}$	Dust Deposition Limit $\text{mg/m}^2/\text{day}$
DS-01	9.1	25.6	34.0	350
DS-02	46.9	26.0	30.4	350
DS-03	42.9	15.9	23.4	350
DS-04	24.2	17.3	13.5	350



O'Callaghan Moran & Associates.
 Granary House, Rutland Street,
 Cork, Ireland.
 Tel. (021) 321521 Fax. (021) 321522
 email : info@ocallaghanmoran.com

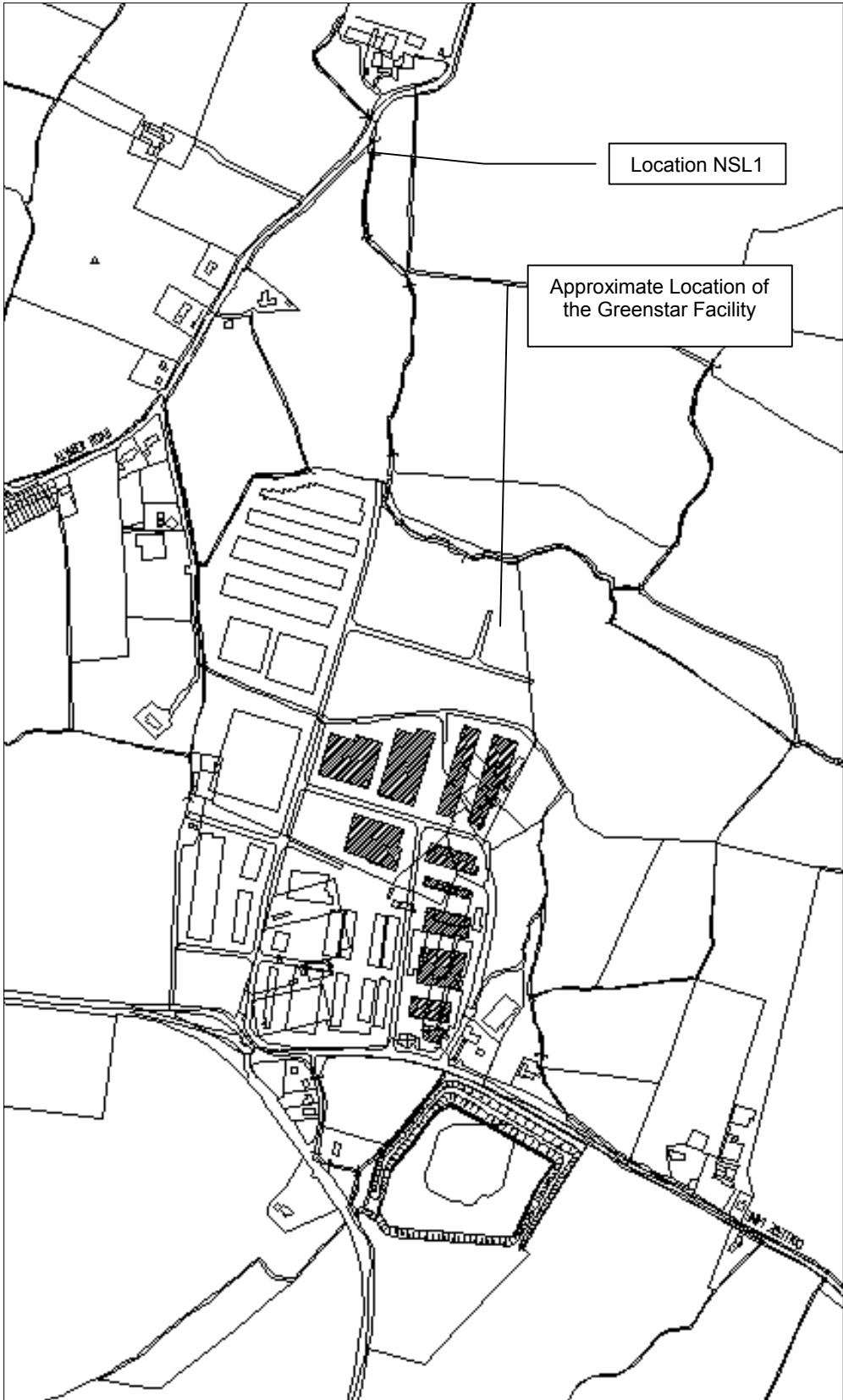
This drawing is the property of O'Callaghan Moran & Associates and shall not be used, reproduced or disclosed to anyone without the prior written permission of O'Callaghan Moran & Associates and shall be returned upon request.

CLIENT
Greenstar Ltd.

TITLE
Monitoring Locations

DETAILS		DRG. No. 3.1	
SCALE	REV.	NTS	REV

Figure 3.2 – Noise Sensitive Location



4. SITE DEVELOPMENT WORKS

4.1 Specified Engineering Works

Elevated ammonia levels have been detected in the surface water discharge from the site. The source of the ammonia was suspected to be three surface water gullies located close to the truck wash/door of the waste transfer building. All three surface water gulleys were diverted from the surface water drainage system to the waste water drainage system as agreed with the Agency in 2013 (as indicated in Figure 3.1).

The foul water monitoring location at the site (SE-1) was moved with prior agreement of the Agency (Figure 3.1). This request was made to allay concerns over safety, accessibility and ease if sampling associated with the former sampling location.

Other additional works include the provision of new signage for the surface water monitoring point (SW1) in response to a non-compliance issued by the Agency following an inspection on 30th November 2013.

4.2 Summary of Resource & Energy Consumption

Table 4.1 presents an estimate of the resources used on-site during 2013 as well as 2012.

Table 4.1 Estimates of Resources Used On-Site – 2012 & 2013

Resources	Quantities 2012	Quantities 2013
Water	7,500 litres	7,000 litres
Diesel	49,719 litres	47,803 litres
Truck Wash	350 litres	200kg
Engine Oil	550 litres	280 litres
Electricity	7,000 kWh	6,800 kWh

4.3 Tank & Pipeline Integrity Testing

Condition 3.11.8 of the licence requires tank, drum, pipeline and bund testing to be carried out every three years. Tobin Consulting Engineers carried out hydrostatic testing and a structural survey of 2 No. interceptors the 26th February 2013 and a detailed report was submitted to the Agency in March 2013.

Separately a CCTV survey of both the waste water and surface water drainage systems was carried out on the 18th April 2013 and bund integrity testing was completed in April 2013. The findings were submitted to the Agency in May 2013. Pipelines were passed fit for purpose.

Integrity testing of all above ground bunds was completed in April 2013 compliance with Condition 3.10.5 of the Licence. Findings were that the integrity and water-tightness of each bund was sound and that each bund was fit for purpose. A report was submitted to the Agency.

A separate preliminary assessment of the surface water interceptor performance was requested by the Agency and this undertaken by IE Consulting Engineers. Reference to previous surface water quality samples undertaken post surface water separator over a number of years do not indicate elevated levels of hydrocarbons in the surface water discharge. The report assumes that the actual Full Retention Separator installed at the site is at least a 'NSFA150' model. The report concludes that the Full Retention Separator installed at the Greenogue facility is fit for purpose.

5. WASTE RECEIVED AND CONSIGNED FROM THE FACILITY

Table 5.1 shows the quantities of wastes accepted and consigned for the reporting period. A more detailed description of the wastes received and consigned in 2013 is presented in the PRTR submission in Appendix 1.

The total quantity of waste received was 61,315.67 tonnes and the total amount consigned was 61,115.86 tonnes. For comparative purposes the amounts of waste received and consigned from 2004 to 2012 are presented in Table 5.2 and Table 5.3. As per Condition 5.8 of the Licence, all the waste consigned from the site went to authorised recovery and disposal facilities and a copy of the relevant Facility Permit or Waste Licences retained on site for Agency inspection.

The records show that more waste was received at the site than was consigned from it. The difference was approximately 200 tonnes. The difference is due to waste which remained on site at the end of 2013 which will be consigned in 2014.

All the wastes consigned from the site went to authorised recovery and disposal facilities.

Table 5.1 Waste Received & Consigned 2013

EWC	Description	Waste In	Waste Out
110110	sludges and filter cakes other than those mentioned in 11 01 09	33.24	-
130503*	Interceptor Sludge	-	17.54
150101	paper and cardboard packaging	2,543.37	2,498.48
150102	plastic packaging	58.13	50.78
150103	wooden packaging	125.10	1,161.42
150104	metallic packaging	4.42	-
150105	composite packaging	25.48	-
150106	mixed packaging	4,643.90	4,626.24
150107	glass packaging	6.28	-
150203	absorbents, filter materials, wiping cloths and protective clothing other than those mentioned in 15 02 02	17.96	-
170201	Wood	27.66	-
170203	plastic	10.60	-
170504	soil and stones other than those mentioned in 17 05 03	10.52	475.48
170904	mixed construction and demolition wastes other than those mentioned in 17 09 01, 17 09 02 and 17 09 03	2,061.02	2,086.14
190902	sludges from water clarification	10,116.98	9,988.00
191209	C&D Inert Mixed	-	30.08
200101	paper and cardboard	24.68	-
200102	glass	4.13	-
200108	biodegradable kitchen and canteen waste	5,666.56	5,023.48
200138	wood other than that mentioned in 20 01 37	1,408.47	490.36
200139	plastics	36.24	-
200140	metals	407.73	449.34
200201	biodegradable waste	1,476.69	1,319.24
200301	mixed municipal waste	20,183.00	22,863.54
200307	bulky waste	12,423.51	10,035.74
	Total Received	61,315.67	
	Total Consigned		61,115.86
	Recovery		38,164.24
	Disposal		22,951.62
	Recovery Rate (%)		62.45

Table 5.2 Waste Received & Consigned in 2012

EWC	Description	Waste In	Waste Out
11 01 10	LDF filter cake	35.38	-
13 05 03	Interceptor sludge	-	11.78
15 01 01	Paper and cardboard	2,828.24	3,026.46
15 01 02	Plastic Packaging	86.97	30
15 01 03	Wooden Packaging	241.09	1,109.60
15 01 04	Segregated metal packaging - steel cans	1.58	-
15 01 05	Segregated tetrapacks	1.36	-
15 01 07	Segregated glass packaging (e.g. bottles, jars)	14.02	-
16 05 04	Gas Cylinders	-	0.34
17 05 04	Soil & Stones	4.35	669.90
17 09 04	C&D Inert Mixed	2,311.21	2,121.30
19 09 02	Filter cake	11,658.18	11,391.44
19 12 10	SRF	80.54	-
19 12 12	Mixed municipal waste (Lights)	-	607.38
20 01 01	Paper and cardboard	8.48	24.04
20 01 02	Glass from municipal sources	1.46	-
20 01 08	Biodegradable kitchen and canteen waste	6,460.78	5,301.40
20 01 11	Textiles	15.08	-
20 01 21	Fluorescent tubes	0.25	-
20 01 33	Batteries	0.8	1.28
20 01 35	WEE	0.08	-
20 01 38	wood	1,097.47	475.22
20 01 39	Plastics	36.9	23.16
20 01 40	Metal	302.11	380.00
20 02 01	Green Waste	1,011.16	844.88
20 03 01	Mixed residual waste	29,484.80	31,512.67
20 03 07	Bulky Wastes	12,690.82	10,239.28
Total Received		68,373.11	
Total Consigned			67,770.13
Recovery			35,717.5
Disposal			32,052.63
Recovery Rate			52.7%

Table 5.3 Previous Waste Consignments

Description	Total Received	Total Consigned
2012	68,373.11	67,770.13
2011	67,199	66,913.50
2010	50,563.40	49,686.56
2009	52,472.47	52,051.49
2008	68,661.96	66,758.24
2007	63,481.24	60,776.28
2006	51,767.97	51,175.53
2005	1,540.48	1,400.66
2004	461.27	411.8

6. ENVIRONMENTAL INCIDENTS AND COMPLAINTS

6.1 Incidents

The Agency collected a surface sample on site on the 12th December 2013. The results which were received on the 28th January showed that the levels of BOD and total suspended solids were greater than the ELV in the licence. An incident report was submitted to the Agency in February 2013.

There were no other reportable incidents on site in 2013.

6.2 Register of Complaints

Greenstar maintains a register of complaints received in accordance with Condition 10.4 of the waste licence. A copy of the complaint and response are retained on site.

Two complaints were received in the reporting period.

- A complaint was received on the 3rd of September 2013 in relation to odour.
- A complaint was received on the 4th September 2013 in relation to planning retention.

7. ENVIRONMENTAL DEVELOPMENT

7.1 Environmental Management Programme Report

Greenstar have implemented an Integrated Management System (IMS) in accordance with the requirements of Occupational Health and Safety Assessment Series (OHSAS) 18001:2007 and International Standard Organisation (ISO) 14001:2004 in order to manage the Health, Safety and Environmental performance of their business and to control health and safety risk and to minimise their environmental aspects and impacts.

The IMS has been developed for the achievement of continual improvement taking into the requirements of the Waste Licence Conditions. Greenstar has prepared and effectively implement documented procedures and instructions in accordance with the requirements of both the OHSAS 18001:2007 and ISO 14001:2004.

As part of this IMS Greenstar has developed a list of environmental, management, operating and maintenance procedures, details of which are outlined in Appendix 2.

The schedule of Objectives and Targets, including their status for 2013 (Table 7.1), as well as the proposed Objectives and Targets for 2014 (Table 7.2) are presented below.

7.1.1 Site Management Structure

Management and Staffing structure: -

Name: Declan O'Reilly

Responsibility: Head of Leinster Collection Operations; overall responsibility for the running of the business including environmental compliance

Experience: 12 years working in the waste management industry and 16 years operational management experience; has completed the FÁS Waste Management Course

Name: James Sowray

Responsibility: Operations Manager; overall responsibility for the day to day site operations of the site including environmental compliance

Experience: 12 years working in operations management; has completed the FAS Management Course

Name: Jonathon O’Keeffe (Nominated Deputy)

Responsibility: Dispatch Manager

Experience: 10 years working in waste management; has completed the FAS Management Course

7.1.2 Staff Training

Environmental awareness training was carried out on site in 2013. Tool box talks were carried out as required in 2013.

7.2 Environmental Management Programme Progress Report & Proposal

7.2.1 Schedule of Objectives 2013 –Progress Report

The objectives that were achieved during this reporting period are outlined in Table 7.1

7.2.2 Schedule of Objectives 2014 – Proposal

The schedule of targets and objectives for 2014 are presented in Table 7.2.

Table 7.1 Schedule of Objective and Targets 2013

No	Objective	Target	Responsibility	Update
1	Environmental Liabilities	Commission the completion of an ELRA in 2013	Site Management	Completed Q2
2	Pollution Prevention	Strive to ensure that monitoring results comply with the licence limits and investigate any exceedances of emission limit values.	Site Management	Ongoing
3	Surface water drainage	Divert section of yard run off to foul water system, in order to improve surface water discharge quality	Site Management	Completed Q2
4	Traffic Management	Continue to improve on traffic management within the facility.	Site Management	On-going for 2014
5	Odour Management	Compile an Odour Management Plan for the facility and include it on the IMS training matrix	Site Management	??
6	Waste Storage	Review waste wood processing & storage practices taking account of the recent Agency Position Paper on the Management of Wood Waste	Site Management	Q3
7	Bund Testing	Ensure Bund testing is carried out on all bunds employed on site	Site Management	Completed
8	Pipe work Integrity Testing	Appoint a suitably qualified contractor to perform an integrity test of the pipe-work onsite including both storm water and foul lines	Site Management	Completed
9	Maintain EMS to ISO:14001 Standard	Through a series of scheduled audits or an audit programme throughout the year develop and maintain the current IS)14001 Certification Standard	Site Management	On-going for 2014

Table 7.2 Schedule of Objective and Targets 2014

No	Objective	Target	Responsibility	Timescale
1	Pollution Prevention	Strive to ensure that monitoring results comply with the licence limits and investigate any exceedances of emission limit values.	Site Management	Q1-Q4
2	Development and adoption of Fire Prevention Procedure at the facility	Reduce risk of fire and enable early detection	Site Management/EHS	Q-2
3	Review of Emergency Response Plan to incorporate fire prevention procedure and new structure	Revision of Plan and additional training for site personnel	Site Management/EHS	Q-2
4	Achieve re-certification to ISO 14001 and OHSAS 18001 standard	3 year certification period expires in 2014. The facility requires re-certification.	Site Management/EHS	Q-3/Q-4
5	Waste Storage	Review waste storage inside the facility to avoid contamination	Site Management	Q-2
6	Odour Management	Continue to monitor odour coming from the site. Work we neighbouring sites as well as the management company	Site Management	Q1-Q4
7	Trigger/Warning Levels	Develop trigger/warning levels of the surface water discharge form the site.	Site Management	Q-2 2014
8	Develop and maintain traffic management plan at the facility	Review of all on-site traffic management	Site Management	Q-2/Q-3

9	Environmental Training of Facility Staff	Update training presentation and ensure training of key managerial staff	Site Management	Q-2/Q-3
10	Site Signage	Facility Notice Boards to be replaced to reflect new ownership	Site Management	Q1

7.3 Communications Programme

Greenstar are committed to setting the standard in waste management and ensuring environmental compliance in all operations. In addition, Greenstar's Environmental, Health & Safety Policy makes a specific commitment to make the policy and records available to the public and interested parties. To this end Greenstar has drawn up a Communications Programme, which details how members of the public are facilitated in accessing environmental information at the facility.

Records available for public inspection on site include:-

- Environmental, Health & Safety Policy,
- Waste Licence,
- Licence Application and Review documentation,
- Monitoring Records,
- Complaints File,
- EPA Correspondence File.

Opening Times for Inspection of Records are from 9 am – 4 pm.

Visits to the site should be arranged in advance by ringing the Facility Manager or Supervisor at 1890 600 900.

7.4 Nuisance Controls

Greenstar has contracted a vermin control company Rentokil to carry out nuisance control at the facility. Rentokil assess vermin activity on-site, along with an inspection of the bait traps that are located throughout the facility. Records are maintained onsite.

Greenstar implemented additional bird control measures in 2012. A speaker system is in operation at the facility as is a bird repellent kite which is situated on the boundary fence, a second repellent kite was sourced and introduced into the bird control programme in Quarter 2 2012. These measures have proved effective during this reporting period in keeping the numbers of birds at the site to a minimum. Greenstar work with Bird Control Ireland who manage the bird control in Baldoyle airfield.

Greenstar installed an odour suppression system in 2011 and the system has been working efficiently since installed.

7.5 Waste Recovery Report

The facility is designed to increase the recycling of biodegradable materials and reduce the volume of waste disposed to landfill. Of the 83,500 tonnes of waste accepted approximately 62% was sent for recovery.

7.6 ELRA & Report on Financial Provision

A Decommissioning Management Plan (DMP) and Environmental Liabilities Risk Assessment (ELRA) including Financial Provision (FP) were submitted to the Agency in 2013 as part of the transfer of the licence which occurred in Q1 2014. Both the DMP and ELRA have been approved by the Agency.

7.7 Wastewater Volume Produced and Transported Off-Site

Wastewater (truck wash and MRF floor) is directed to a silt trap and then to a petrol/oil interceptor before discharging to the municipal sewer. It is estimated that approximately 2,000 m³ of wastewater was discharged to the sewer during the reporting period. During the year 17.74 tonnes of waste was also removed from the facility following the cleaning out of the interceptors on site.

8. OTHER REPORTS

8.1 European Pollutant Release and Transfer Register

A copy of the EPRTTR return submitted to the Agency via the web-based data reporting system is included in Appendix 1.

APPENDIX 1

European Pollutant Release and Transfer Register



[Guidance to completing the PRTR workbook](#)

AER Returns Workbook

Version 1.1.17

REFERENCE YEAR	2013
-----------------------	------

1. FACILITY IDENTIFICATION

Parent Company Name	Greenstar Limited
Facility Name	Greenstar Ltd (Greenogue)
PRTR Identification Number	W0188
Licence Number	W0188-01

Waste or IPPC Classes of Activity

No.	class name
4.2	Recycling or reclamation of organic substances which are not used as solvents (including composting and other biological transformation processes).
3.11	Blending or mixture prior to submission to any activity referred to in a preceding paragraph of this Schedule.
3.12	Repackaging prior to submission to any activity referred to in a preceding paragraph of this Schedule.
3.13	Storage prior to submission to any activity referred to in a preceding paragraph of this Schedule, other than temporary storage, pending collection, on the premises where the waste concerned is produced.
4.12	Exchange of waste for submission to any activity referred to in a preceding paragraph of this Schedule.
4.13	Storage of waste intended for submission to any activity referred to in a preceding paragraph of this Schedule, other than temporary storage, pending collection, on the premises where such waste is produced.
4.3	Recycling or reclamation of metals and metal compounds.
4.4	Recycling or reclamation of other inorganic materials.
Address 1	14B Phase 3
Address 2	Road 3A
Address 3	Greenogue Industrial Estate
Address 4	Rathcoole, Co Dublin
Country	Dublin
Country	Ireland
Coordinates of Location	-6.46619 53.2936
River Basin District	IEEA
NACE Code	3832
Main Economic Activity	Recovery of sorted materials
AER Returns Contact Name	Malcolm Dowling
AER Returns Contact Email Address	malcolm.dowling@greenstar.ie
AER Returns Contact Position	Group Compliance Manager
AER Returns Contact Telephone Number	012947976
AER Returns Contact Mobile Phone Number	
AER Returns Contact Fax Number	
Production Volume	0.0
Production Volume Units	
Number of Installations	0
Number of Operating Hours in Year	0
Number of Employees	8
User Feedback/Comments	In releases to wastewater section the level of detergents was greater than 50% lower than last year. The level of sulphate was greater than 50% higher than last year. There was no source of the elevated levels identified in 2013. As the samples are grab samples there can be a variation in concentrations throughout the year. All ELVs were complied with during the year at the discharge point.
Web Address	

2. PRTR CLASS ACTIVITIES

Activity Number	Activity Name
50.1	General
5(c)	Installations for the disposal of non-hazardous waste
50.1	General

3. SOLVENTS REGULATIONS (S.I. No. 543 of 2002)

Is it applicable?	
Have you been granted an exemption ?	
If applicable which activity class applies (as per Schedule 2 of the regulations) ?	
Is the reduction scheme compliance route being used ?	

4. WASTE IMPORTED/ACCEPTED ONTO SITE

[Guidance on waste imported/accepted onto site](#)

Do you import/accept waste onto your site for on-site treatment (either recovery or disposal activities) ?	
--	--

This question is only applicable if you are an IPPC or Quarry site

4.1 RELEASES TO AIR

[Link to previous years emissions data](#)

| PRTR# : W0188 | Facility Name : Greenstar Ltd (Greenogue) | Filename : W0188_2013.xls | Return Year : 2013 |

28/03/2014 08:40

SECTION A : SECTOR SPECIFIC PRTR POLLUTANTS

POLLUTANT		RELEASURES TO AIR			Please enter all quantities in this section in KGs			
No. Annex II	Name	M/C/E	METHOD		Emission Point 1	T (Total) KG/Year	A (Accidental) KG/Year	F (Fugitive) KG/Year
			Method Code	Designation or Description				
						0.0	0.0	0.0

* Select a row by double-clicking on the Pollutant Name (Column B) then click the delete button

SECTION B : REMAINING PRTR POLLUTANTS

POLLUTANT		RELEASURES TO AIR			Please enter all quantities in this section in KGs			
No. Annex II	Name	M/C/E	METHOD		Emission Point 1	T (Total) KG/Year	A (Accidental) KG/Year	F (Fugitive) KG/Year
			Method Code	Designation or Description				
						0.0	0.0	0.0

* Select a row by double-clicking on the Pollutant Name (Column B) then click the delete button

SECTION C : REMAINING POLLUTANT EMISSIONS (As required in your Licence)

POLLUTANT		RELEASURES TO AIR			Please enter all quantities in this section in KGs			
Pollutant No.	Name	M/C/E	METHOD		Emission Point 1	T (Total) KG/Year	A (Accidental) KG/Year	F (Fugitive) KG/Year
			Method Code	Designation or Description				
						0.0	0.0	0.0

* Select a row by double-clicking on the Pollutant Name (Column B) then click the delete button

Additional Data Requested from Landfill operators

For the purposes of the National Inventory on Greenhouse Gases, landfill operators are requested to provide summary data on landfill gas (Methane) flared or utilised on their facilities to accompany the figures for total methane generated. Operators should only report their Net methane (CH4) emission to the environment under T(total) KG/yr for Section A: Sector specific PRTR pollutants above. Please complete the table below:

Landfill: Please enter summary data on the quantities of methane flared and / or utilised	Greenstar Ltd (Greenogue)				Facility Total Capacity m3 per hour
	T (Total) kg/Year	M/C/E	Method Used		
			Method Code	Designation or Description	
Total estimated methane generation (as per site model)	0.0				N/A
Methane flared	0.0				0.0 (Total Flaring Capacity)
Methane utilised in engine/s	0.0				0.0 (Total Utilising Capacity)
Net methane emission (as reported in Section A above)	0.0				N/A

4.2 RELEASES TO WATERS

[Link to previous years emissions data](#)

| PRTR# : W0188 | Facility Name : Greenstar Ltd (Greenogue) | Filename : W0188_2013.xls | Return Year : 2013 |

28/03/2014 08:40

SECTION A : SECTOR SPECIFIC PRTR POLLUTANTS

Data on ambient monitoring of storm/surface water or groundwater, conducted as part of your licence requirements, should NOT be submitted under AER / PRTR Reporting as this

RELEASES TO WATERS						Please enter all quantities in this section in KGs			
POLLUTANT		METHOD USED				QUANTITY			
No. Annex II	Name	M/C/E	Method Code	Designation or Description	Emission Point 1	T (Total) KG/Year	A (Accidental) KG/Year	F (Fugitive) KG/Year	
						0.0	0.0	0.0	0.0

* Select a row by double-clicking on the Pollutant Name (Column B) then click the delete button

SECTION B : REMAINING PRTR POLLUTANTS

Please enter all quantities in this section in KGs

RELEASES TO WATERS						Please enter all quantities in this section in KGs			
POLLUTANT		METHOD USED				QUANTITY			
No. Annex II	Name	M/C/E	Method Code	Designation or Description	Emission Point 1	T (Total) KG/Year	A (Accidental) KG/Year	F (Fugitive) KG/Year	
						0.0	0.0	0.0	0.0

* Select a row by double-clicking on the Pollutant Name (Column B) then click the delete button

SECTION C : REMAINING POLLUTANT EMISSIONS (as required in your Licence)

Please enter all quantities in this section in KGs

RELEASES TO WATERS						Please enter all quantities in this section in KGs			
POLLUTANT		METHOD USED				QUANTITY			
Pollutant No.	Name	M/C/E	Method Code	Designation or Description	Emission Point 1	T (Total) KG/Year	A (Accidental) KG/Year	F (Fugitive) KG/Year	
						0.0	0.0	0.0	0.0

* Select a row by double-clicking on the Pollutant Name (Column B) then click the delete button

4.3 RELEASES TO WASTEWATER OR SEWER

[Link to previous years emissions data](#)

SECTION A : PRTR POLLUTANTS

OFFSITE TRANSFER OF POLLUTANTS DESTINED FOR WASTE-WATER TREATMENT OR SEWER					Please enter all quantities in this section in KGs			
POLLUTANT		METHOD			QUANTITY			
No. Annex II	Name	M/C/E	Method Code	Designation or Description	Emission Point 1	T (Total) KG/Year	A (Accidental) KG/Year	F (Fugitive) KG/Year
						0.0	0.0	0.0

* Select a row by double-clicking on the Pollutant Name (Column B) then click the delete button

SECTION B : REMAINING POLLUTANT EMISSIONS (as required in your Licence)

OFFSITE TRANSFER OF POLLUTANTS DESTINED FOR WASTE-WATER TREATMENT OR SEWER					Please enter all quantities in this section in KGs			
POLLUTANT		METHOD			QUANTITY			
Pollutant No.	Name	M/C/E	Method Code	Designation or Description	Emission Point 1	T (Total) KG/Year	A (Accidental) KG/Year	F (Fugitive) KG/Year
238	Ammonia (as N)	M	PER	Based on an estimate of water used in the wheel wash. Analysis is ISO accredited		40.063	40.063	0.0
303	BOD	M	PER	Based on an estimate of water used in the wheel wash. Analysis is ISO accredited		1308.66	1308.66	0.0
306	COD	M	PER	Based on an estimate of water used in the wheel wash. Analysis is ISO accredited		2360.0	2360.0	0.0
308	Detergents (as MBAS)	M	PER	Based on an estimate of water used in the wheel wash. Analysis is ISO accredited		1.283	1.283	0.0
314	Fats, Oils and Greases	M	PER	Based on an estimate of water used in the wheel wash. Analysis is ISO accredited		53.66	53.66	0.0
343	Sulphate	M	PER	Based on an estimate of water used in the wheel wash. Analysis is ISO accredited		170.276	170.276	0.0
240	Suspended Solids	M	PER	Based on an estimate of water used in the wheel wash. Analysis is ISO accredited		406.33	406.33	0.0

* Select a row by double-clicking on the Pollutant Name (Column B) then click the delete button

4.4 RELEASES TO LAND

[Link to previous years emissions data](#)

| PRTR# : W0188 | Facility Name : Greenstar Ltd (Greenogue) | Filename : W0188_2013.xls | Return Year : 2013 |

28/03/2014 08:40

SECTION A : PRTR POLLUTANTS

POLLUTANT		METHOD			Please enter all quantities in this section in KGs		
RELEASERS TO LAND		METHOD			QUANTITY		
No. Annex II	Name	M/C/E	Method Code	Designation or Description	Emission Point 1	T (Total) KG/Year	A (Accidental) KG/Year
					0.0	0.0	0.0

* Select a row by double-clicking on the Pollutant Name (Column B) then click the delete button

SECTION B : REMAINING POLLUTANT EMISSIONS (as required in your Licence)

POLLUTANT		METHOD			Please enter all quantities in this section in KGs		
RELEASERS TO LAND		METHOD			QUANTITY		
Pollutant No.	Name	M/C/E	Method Code	Designation or Description	Emission Point 1	T (Total) KG/Year	A (Accidental) KG/Year
					0.0	0.0	0.0

* Select a row by double-clicking on the Pollutant Name (Column B) then click the delete button

5. ONSITE TREATMENT & OFFSITE TRANSFERS OF WASTE

PP111a - W0188 | Facility Name: Greenogues Ltd (Greenogues) | Filename: W0188_2013.46 | Return Year: 2013

28/03/2014 09:42

Please enter all quantities on this sheet in Tonnes

Transfer Destination	European Waste Code	Hazardous	Quantity (Tonnes per Year)	Description of Waste	Waste Treatment Operation	Method Used		Location of Treatment	Licence/Permit No of Next Destination Facility Licence/Permit No of Recover/Disposer	Licence/Permit No of Next Destination Facility Licence/Permit No of Recover/Disposer	Name and License / Permit No. and Address of Final Recoverer / Disposer (HAZARDOUS WASTE ONLY)	Actual Address of Final Destination (i.e. Final Recovery / Disposal Site (HAZARDOUS WASTE ONLY))
						M/C/E	Method Used					
Within the Country	15 01 01	No	2251.82	paper and cardboard packaging	R13	M	Weighed	Offsite in Ireland	Greenstar Ltd,W0053-03 Bailey Waste Recycling	Bray Depot,Fassaroe,Bray,Co Wicklow,Ireland		
Within the Country	15 01 01	No	131.76	paper and cardboard packaging	R13	M	Weighed	Offsite in Ireland	(Greenstar Ltd),WPT-FG-08-0002-01	Rosemount,,Ballycoolin,Dublin 11,Ireland Unit 29,Kylemore Industrial Estate,Killen Road,Ballyfermot,Dublin 10,Ireland		
Within the Country	15 01 01	No	114.9	paper and cardboard packaging	R13	M	Weighed	Offsite in Ireland	Rebox Recycling,CP D95/1			
Within the Country	15 01 02	No	3.32	plastic packaging	R13	M	Weighed	Offsite in Ireland	Greenstar Holdings Ltd,W0183-01 Bailey Waste Recycling	Millennium Park,Ballycoolin, Dublin 11,,Ireland		
Within the Country	15 01 02	No	2.05	plastic packaging	R13	M	Weighed	Offsite in Ireland	(Greenstar Ltd),WPT-FG-08-0002-01	Rosemount,,Ballycoolin,Dublin 11,Ireland		
Within the Country	15 01 02	No	45.41	plastic packaging	R13	M	Weighed	Offsite in Ireland	Lainster Environmental,Eco WM Ltd ,WFP-LH-09-0004-01 Dundalk Louth - ,Ireland	Dundalk,Louth,,Ireland Bray Depot,Fassaroe,Bray,Co Wicklow,Ireland		
Within the Country	15 01 03	No	1113.4	wooden packaging	R3	M	Weighed	Offsite in Ireland	Greenstar Ltd,W0053-03 Max Pallet Services Ltd,Licence - exempt	Wicklow,Ireland Johnston Bridge,Erfield,Co Meath,,Ireland Bray Depot,Fassaroe,Bray,Co Wicklow,Ireland		
Within the Country	15 01 03	No	48.0	wooden packaging	R3	M	Weighed	Offsite in Ireland				
Within the Country	15 01 06	No	4626.24	mixed packaging soil and stones other than those mentioned	R13	M	Weighed	Offsite in Ireland	Greenstar Ltd,W0053-03	Wicklow,Ireland		
Within the Country	17 05 04	No	475.48	in 17 05 03 mixed construction and demolition wastes other than those mentioned in 17 09 01, 17	R5	M	Weighed	Offsite in Ireland	Bord Na Mona PLC,W0201-01	Kilbracken,COR-LS-09-001-01 Bray Depot,Fassaroe,Bray,Co Wicklow,Ireland		
Within the Country	17 09 04	No	2086.14	09 02 and 17 09 03	R5	M	Weighed	Offsite in Ireland	Greenstar Ltd,W0053-03	Wicklow,Ireland Knockharley Landfill ,Kentstown ,Co Meath ,Ireland		
Within the Country	19 09 02	No	7670.54	sludges from water clarification	D5	M	Weighed	Offsite in Ireland	Greenstar Ltd ,W0146-01	Bray Depot,Fassaroe,Bray,Co Wicklow,Ireland		
Within the Country	19 09 02	No	2317.46	sludges from water clarification	D5	M	Weighed	Offsite in Ireland	Greenstar Holdings Ltd.,W0165-02	Ballynagrán,Coolbeg & Kilcandra,Co. Wicklow,,Ireland Bray Depot,Fassaroe,Bray,Co Wicklow,Ireland		
Within the Country	19 12 09	No	30.08	minerals (for example sand, stones)	R13	M	Weighed	Offsite in Ireland	Greenstar Ltd,W0053-03	Wicklow,Ireland		
Within the Country	20 01 08	No	2078.58	biodegradable kitchen and canteen waste	R3	M	Weighed	Offsite in Ireland	Bord Na Mona PLC,W0201-03	Drehid Landfill,Drehid ,Co. Kildare,,Ireland Ballybeg - Littleton ,Co. Tipperary , Tipperary,Ireland		
Within the Country	20 01 08	No	2422.14	biodegradable kitchen and canteen waste	R3	M	Weighed	Offsite in Ireland	Acorn Recycling,W0249-01	Wadcock Composting,WP Kilmaster Co. Carlow,,Ireland		
Within the Country	20 01 08	No	522.76	biodegradable kitchen and canteen waste	R3	M	Weighed	Offsite in Ireland	11/04 Clonmel Waste Disposal Ltd ,WP-008-02	Tipperary ,Ireland Bray Depot,Fassaroe,Bray,Co Wicklow,Ireland		
Within the Country	20 01 38	No	362.76	wood other than that mentioned in 20 01 37	R3	M	Weighed	Offsite in Ireland				
Within the Country	20 01 38	No	127.6	wood other than that mentioned in 20 01 37	R3	M	Weighed	Offsite in Ireland	Greenstar Ltd,W0053-03	10 The Anchorage Business Park,Charlotte Quay,Dublin 4,,Ireland		
Within the Country	20 01 40	No	293.0	metals	R4	M	Weighed	Offsite in Ireland	Davis Recycling Ltd.,W0134-01	ClearCircle Metals (Limerick) Ltd		
Within the Country	20 01 40	No	102.66	metals	R4	M	Weighed	Offsite in Ireland	ClearCircle,WCP-LK-08-589-01	Ballysimon Road Limerick,,Ireland		
Within the Country	20 01 40	No	53.68	metals	R4	M	Weighed	Offsite in Ireland	Multi Metals Recycling	Blessington,Co Wicklow,,Ireland		
Within the Country	20 02 01	No	859.54	biodegradable waste	R3	M	Weighed	Offsite in Ireland	Bord Na Mona PLC,W0201-03	Drehid Landfill,Drehid ,Co. Kildare,,Ireland		
Within the Country	20 02 01	No	31.48	biodegradable waste	R3	M	Weighed	Offsite in Ireland	Clonmel Waste Disposal Ltd ,WP-008-02	Tipperary ,Ireland		
Within the Country	20 02 01	No	428.22	biodegradable waste	R3	M	Weighed	Offsite in Ireland	Enrich Environmental ,WMP 2004/57	Kilcock,Co. Kildare,,Ireland		
Within the Country	20 03 01	No	5216.22	mixed municipal waste	D5	M	Weighed	Offsite in Ireland	Bord Na Mona PLC,W0201-03	Drehid Landfill,Drehid ,Co. Kildare,,Ireland Crag Avenue,Clondalkin Industrial Estate,Clondalkin ,Dublin 22,Ireland		
Within the Country	20 03 01	No	2668.82	mixed municipal waste	R13	M	Weighed	Offsite in Ireland	Greyhound Recycling & Recovery Limited,W0205-01			
Within the Country	20 03 01	No	5118.66	mixed municipal waste	R1	M	Weighed	Offsite in Ireland	Indover WMP ,W0167-02	Carranstown Duleek Co Meath ,Ireland		
Within the Country	20 03 01	No	379.94	mixed municipal waste	R13	M	Weighed	Offsite in Ireland	O'Toole Composting,WP01/07	Ballintrasna,Co. Carlow,,Ireland Ballymount Cross,Tallaght,Dublin 24,,Ireland		
Within the Country	20 03 01	No	1928.38	mixed municipal waste	R13	M	Weighed	Offsite in Ireland	Panda,W039-02	Knockharley Landfill ,Kentstown ,Co Meath ,Ireland		
Within the Country	20 03 01	No	5085.28	mixed municipal waste	D5	M	Weighed	Offsite in Ireland	Greenstar Ltd ,W0146-01	Bray Depot,Fassaroe,Bray,Co Wicklow,Ireland		
Within the Country	20 03 01	No	2380.8	mixed municipal waste	D5	M	Weighed	Offsite in Ireland	Greenstar Holdings Ltd.,W0165-02	Ballynagrán,Coolbeg & Kilcandra,Co. Wicklow,,Ireland		
Within the Country	20 03 01	No	58.36	mixed municipal waste	R13	M	Weighed	Offsite in Ireland	Greenstar Holdings Ltd,W0183-01	Millennium Park,Ballycoolin, Dublin 11,,Ireland Bray Depot,Fassaroe,Bray,Co Wicklow,Ireland		
Within the Country	20 03 01	No	27.08	mixed municipal waste	R13	M	Weighed	Offsite in Ireland	Greenstar Ltd,W0053-03	Wicklow,Ireland		
Within the Country	20 03 07	No	40.72	bulky waste	D5	M	Weighed	Offsite in Ireland	Bord Na Mona PLC,W0201-03	Drehid Landfill,Drehid ,Co. Kildare,,Ireland Ballynagrán,Coolbeg & Kilcandra,Co. Wicklow,,Ireland		
Within the Country	20 03 07	No	240.6	bulky waste	D5	M	Weighed	Offsite in Ireland	Greenstar Holdings Ltd.,W0165-02	Bray Depot,Fassaroe,Bray,Co Wicklow,Ireland		
Within the Country	20 03 07	No	96.38	bulky waste	R13	M	Weighed	Offsite in Ireland	Greenstar Ltd,W0053-03	Wicklow,Ireland		
Within the Country	20 03 07	No	9658.04	bulky waste	R13	M	Weighed	Offsite in Ireland	Greenstar Holdings Ltd,W0183-01	Millennium Park,Ballycoolin, Dublin 11,,Ireland		
Within the Country	13 05 03	Yes	17.74	interceptor sludges	R13	M	Weighed	Offsite in Ireland	Rita Environmental Ltd W0192-03 Greenogues Business Park ,Rathcoole Co Dublin ,Ireland	Greenogues Business Park ,Rathcoole ,Co Dublin ,Ireland		

APPENDIX 2

Procedures List



Doc. No.: Control	Revision No.: As Shown	Issue Date: As Shown
Approved By:	Malcolm Dowling – Group Environmental Manager Oliver Callan – Group H&S Manager	Page 1 of 5

Integrated Procedures - IP

IP-01	Document & Record Control Procedure	Rev 01, 05/07/10
IP-02	Health & Safety Risk Assessment Procedure	Rev 01, 05/07/10
IP-03	Environmental Aspects & Impacts Procedure	Rev 02, 09/09/13
IP-04	Legal & Regulatory Requirements Procedure	Rev 02, 09/09/13
IP-05	Objectives, Targets & Management Programmes Procedure	Rev 02, 09/09/13
IP-06	Competence, Training & Awareness Procedure	Rev 03, 15/04/13
IP-07	Communication & Consultation Procedure	Rev 01, 05/07/10
IP-08	Monitoring, Measurement & Improvement Procedure	Rev 01, 05/07/10
IP-09	Evaluation of Compliance Procedure	Rev 02, 15/09/11
IP-10	Non Conformances, Corrective/Preventive Actions Procedure	Rev 03, 01/02/11
IP-11	Internal Audit Procedure	Rev 03, 28/05/12
IP-12	Management Review Procedure	Rev 01, 05/07/10
IP-13	Control of Contractors/Visitors Procedure	Rev 03, 08/06/12
IP-14	Health & Safety & Environmental Monitoring	Rev 02, 29/10/10
IP-15	Emergency Preparedness & Response Procedure	Rev 02, 01/02/11
IP-16	Accident Prevention Procedure	Rev 03, 30/06/13

Safety Procedures - SP

SP-01	Permit to Work Procedure	Rev 02, 03/05/12
SP-02	Maintenance & Calibration Procedure	Rev 03, 04/04/11
SP-03	Mobile Plant Procedure	Rev 01, 05/07/10
SP-04	Fork Truck Procedure	Rev 01, 05/07/10
SP-05	Operation of Fixed Plant Procedure	Rev 01, 05/07/10
SP-06	Lock Out / Tag Out Procedure	Rev 01, 05/07/10
SP-07	Health & Safety Notification Procedure	Rev 01, 05/07/10
SP-08	Motor Claim Notification Procedure	Rev 01, 01/02/11
SP-09	MSW Shredder routine Maintenance & Clearing of Blockages Procedure (SCGT)	Rev 01, 01/12/11
SP-10	Weighbridge & Tipping Procedure (SCGT)	Rev 01, 01/12/11
SP-11	Cleaning of Washing Bay (Greenogue)	Rev 01, 05/05/12
SP-12	Ballymount CRF Safe Systems of Work	Rev 01, 23/09/13



Doc. No.: Control	Revision No.: As Shown	Issue Date: As Shown
Approved By:	Malcolm Dowling – <i>Group Environmental Manager</i> Oliver Callan – <i>Group H&S Manager</i>	Page 2 of 5

Environmental Procedures - EP

EP-01	Office Waste & Energy Management Procedure	Rev 01, 05/07/10
EP-02	Decommissioning and Aftercare Procedure	Rev 02, 14/09/11
EP-03	Environment Communications Procedure	Rev 03, 16/10/13
EP-04	Waste Permits & Licences Procedure	Rev 01, 05/07/10
EP-05	Waste Acceptance Procedure	Rev 01, 05/07/10
EP-06	Unacceptable Waste Procedure	Rev 01, 05/07/10
EP-07	Waste & Material Storage Procedure	Rev 01, 05/07/10
EP-08	Waste Processing Procedure	Rev 01, 05/07/10
EP-09	Site Infrastructure Procedure	Rev 01, 05/07/10
EP-10	Nuisance Management Procedure (Site Specific)	(Site Specific)
EP-11	Civic Amenity Site Procedure	Rev 01, 05/07/10

Doc. No.: Control	Revision No.: 02	Issue Date: 1 st February 2011
Approved By:	Malcolm Dowling – Group Environmental Manager Oliver Callan – Group H&S Manager	Page 3 of 5

Amendment History

Date	Amendment No.	Procedure No:	Revision No:	Comment	Authorised By
05.07.10	01	All	01	Initial Issue	M.D & O.C
13.09.10	02	EP-03	02	Issue of Incident Reports	M.D
20.09.10	03	IP-10	02	Env issues not logged on WIMS Database	M.D
29.10.10	04	IP-13	02	Use of M&M equipment by contractors	M.D & O.C
29.10.10	05	IP-14	02	Use of M&M equipment by contractors	M.D & O.C
29.10.10	06	SP-02	02	Inclusion of Maintenance Schedule	M.D & O.C
05.11.10	07	IP-04	02	Inclusion of other requirements	S.B & O.C
01.02.11	08	SP-08	01	Inclusion of new procedure	O.C
01.02.11	09	IP-10	03	Inclusion of SP-08	O.C
01.02.11	10	IP-15	02	Removal of SF-022	O.C
01.02.11	11	Contents	As shown	EP-10 Site Specific	M.D & O.C
01.02.11	12	IP-06	02	Addressing Agency Staff needs	M.D & O.C
01.02.11	13	Circ List	02	Amendment to document control	M.D & O.C
04.04.11	14	SP-02	03	Inclusion of Site Specific Maintenance schedules	O.C
07.06.11	15	IP-11	02	Inclusion of H&S & Env Internal Audit Schedules	M.D & O.C
14/09/11	16	EP-02	02	Inclusion of decommissioning of plant/equipment	S.B
15/09/11	17	IP-09	02	Inclusion of Statutory Inspections	O.C
01/12/11	18	SP-09	01	Inclusion of new procedure for SCGT	O.C
01/12/11	19	SP-10	01	Inclusion of new procedure for SCGT	O.C
03/05/12	20	SP-01	02	Amendment to remove SF 028	O.C
05/05/12	21	SP-11	01	Inclusion of a new procedure for Greenogue	O.C
28/05/12	22	IP-11	03	General Amendments to internal audit procedure	M.D & O.C
08/06/12	23	IP-13	03	Grammatical amendment	M.D & O.C
15/04/13	24	IP-06	03	Agency staff – sign-off record sufficient proof of training. TMS optional	M.D & O.C

Doc. No.: Control	Revision No.: 02	Issue Date: 1 st February 2011
Approved By:	Malcolm Dowling – Group Environmental Manager Oliver Callan – Group H&S Manager	Page 4 of 5

Date	Amendment No.	Procedure No:	Revision No:	Comment	Authorised By
30/06/13	25	IP-16	1	Inclusion of new procedure	M.D.
09/09/13	26	IP-03	2	Use of Scannell Software Solutions (Enviromanager) instead of IF-03A	M.D & O.C
09/09/13	27	IP-04	3	Use of Scannell Software Solutions (Enviromanager) instead of IF-03A	M.D & O.C
09/09/13	28	IP-05	2	Use of Scannell Software Solutions (Enviromanager) instead of IF-03A	M.D & O.C
16/10/13	29	EP-03	3	Introduction of EPA ALDER Portal	K.B
23/09/13	30	SP-12	1	Introduction of SP-12O.C	



Doc. No.: Control	Revision No.: 02	Issue Date: 1 st February 2011
Approved By:	Malcolm Dowling – Group Environmental Manager Oliver Callan – Group H&S Manager	Page 5 of 5

Circulation List

The Integrated Procedures Manual is a controlled document. Copies of the Integrated Procedures Manual are available as follows;

Copy Number	Holder
1 (Master Copy)	Environmental, Health & Safety (EHS) Executive
2	Greenstar Limited Intranet – Electronic Copy