

Wallace Recycling Ltd.

UNIT 16/17 MULLINGAR BUSINESS PARK, MULLINGAR, CO. WESTMEATH

WASTE LICENCE REGISTER NO: W0197-02

Annual Environmental Report 2013



ENVIROGUIDE CONSULTING,
93 UPPER GEORGES STREET,
DUN LAOGHAIRE,
CO. DUBLIN

TABLE OF CONTENTS

A.	INTRODUCTION:	3
B.	TECHNICAL AMENDMENT & OTHER CHANGES:	4
C.	ENVIRONMENTAL POLICY STATEMENT	6
1.	SUMMARY INFORMATION	8
1.1	EMISSIONS FROM FACILITY	8
1.1	Dust Monitoring	8
1.2	Emissions to Sewer Monitoring	9
1.3	Noise Monitoring	11
2.	WASTE MANAGEMENT ACTIVITIES	11
2.1	Waste Types	11
3.	RESOURCE CONSUMPTION SUMMARY	13
3.1	Energy consumption.....	13
3.2	Water Consumption from Municipal Supply.	13
4.	ENVIRONMENTAL COMPLAINTS & ENVIRONMENTAL INCIDENTS	
	SUMMARY	14
4.1	Environmental Complaints:.....	14
4.2	Environmental Incidents:	14
5.	SCHEDULE OF OBJECTIVES & TARGETS AND EMP for 2012	14
5.1	EMP- Proposed for 2013	14
7.	POLLUTION EMISSION REGISTER.	16
8.	DRAWING OF MONITORING LOCATIONS (IF AMENDED)	16
9.	TANK & PIPELINE TESTING & INSPECTION REPORT	16
10.	ENERGY EFFICIENCY AUDIT REPORT SUMMARY	16
11.	REPORT OF THE ASSESSMENT OF THE EFFICIENCY OF USE OF	
	RAW MATERIALS IN PROCESSES & THE REDUCTION OF WASTE	
	GENERATED	16
12.	REPORT ON PROGRESS MADE & PROPOSALS BEING DEVELOPED	
	TO MINIMISE WATER DEMAND & THE VOLUME OF TRADE	
	EFFLUENT DISCHARGE	16
13.	DEVELOPMENT/ INFRASTRUCTURE WORKS SUMMARY	17
13.1	Development/Infrastructure works completed in 2013	17
13.2	Development/Infrastructure works planned for 2014.....	17
14.	REPORTS ON MANAGEMENT & STAFFING STRUCTURE OF THE	
	FACILITY, AND A PROGRAMME FOR PUBLIC INFORMATION	18

**15. REVIEW OF CLOSURE, RESTORATION & AFTERCARE
MANAGEMENT PLAN 18**

16. ENVIRONMENTAL LIABILITIES STATEMENT 19

17. ANY OTHER ITEMS SPECIFIED BY THE EPA 20

APPENDIX 1 Monitoring Locations and revised boundary

APPENDIX 2 INCOMING and OUTGOING WASTE and PRTR .

A. INTRODUCTION:

This is the eighth annual environmental report for Wallace Recycling Ltd, Unit 16/17 Mullingar Business Park, Mullingar, Co. Westmeath in relation to the Waste Licence WO197-02 issued on 12th October 2009. This report covers the twelve months of the calendar year for 2013.

The Wallace Recycling Facility is located in an Industrial area of Mullingar Business Park, Co. Westmeath. Michael & Linda Wallace operated Wallace Recycling Ltd at the current site since 2000. The licensed area now encompasses approximately 1.00 acre.

In November 2012 Wallace Recycling Ltd. went into receivership. The receiver was Mr George Maloney of Baker, Tilly, Ryan, Glennon, of Trinity House, Charleston Road, Ranelagh Dublin 6. An agreement was reached in early 2013 for the sale of the facility by the receiver to Mulleadys Ltd. of Drumlish Co. Longford. As part of the sale process various conditions had to be fulfilled in order to transfer the Waste Licence. This included a detailed CRAMP and ELRA and subsequent site investigation. Following agreement of the CRAMP and ELRA by the Office of Environmental Enforcement, a proposal for financial provision was submitted to the EPA as was a request to transfer the licence to Mulleadys Ltd. This application was submitted on 1st November 2013 and the transfer was completed on 31st January 2014.

Wallace Recycling Ltd is the only EPA waste licensed facility in County Westmeath; as such it is a key facility in terms of compliance with the requirements of the Waste Management Plan for the Midlands region. Wallace Recycling provide waste management and recycling services to most of County Westmeath including the provision of a civic amenity area to facilitate the public.

The annual waste throughput allowed by the waste licence is 50,000 tonnes. When fully operational waste is mechanically sorted and segregated via a Trommel and semi-automatic picking line; larger items are picked by hand. Sorted recyclable material is further processed at the facility i.e. shredded or baled prior to being transported off-site for recovery. Non-recyclable waste is stored on site prior to being transported off-site for disposal at licensed facilities. During 2013 activities were limited to bulking up and transfer of waste and the provision of a civic amenity facility.

Wallace Recycling Ltd services in 2013 included:

- Mini, Standard, Open/Closed Skip Hire;
- Roll-on, Roll-off Skip Hire;
- Commercial & Industrial Bin collections;
- Office Recycling collections;
- A centrally located one-stop-shop waste transfer station.

The content of the AER is based on Schedule F of the Waste Licence and the report format follows guidelines set in the "Guidance Note for Annual Environmental Report" issued by the Environmental Protection Agency.

B. TECHNICAL AMENDMENT & OTHER CHANGES:

A Technical Amendment (Technical Amendment A) was approved in September 2012. This provided for the reduction in the licensed boundary in line with attached drawing. This effectively means that the 'red-line' area is now units 16/17 with units 14/15 having been removed. It is a condition of this Technical Amendment that modifications are made to the drainage in line with new conditions 3.8.5, 3.8.6, and 3.8.7. A new condition 6.18 provides for amendments to monitoring locations. This was not completed in 2013 due to the 'in limbo status' created by the receivership but will be carried out as part of the upgrade works agreed with the Agency during the CRAMP and ELRA process.

As part of this Technical Amendment the Waste Acceptance categories and quantities were amended to read:

Waste Type	Maximum (Tonnes per Annum)
Household Waste	10,000
Commercial and Industrial Waste	30,000
Construction and Demolition Waste	10,000
Total	50,000 <small>Note 1</small>

Note 1: The individual limitation on waste streams may be varied with the agreement of the Agency subject to the overall limit staying the same.

The following waste processes are authorised:

Shredding, crushing, baling, repackaging processes

Non-hazardous C&D waste recovery (including crushing, screening, sorting, baling)

Storage of waste

Recovery of dry recyclables

Acceptance of ELVs

In August 2012 the EPA revoked their agreement for the recovery of end-of life vehicles at the Mullingar facility. The company had previously agreed to this as part of the Technical Amendment request submitted in May 2012 and this was confirmed in Technical Amendment A. ELV's were not accepted into the facility in 2013.

Opening hours:

The granted operating hours are as follows:

"Waste shall be accepted at the facility only between the hours of 07:30 to 19:00 Monday to Saturday inclusive.

The facility shall be operated only during the hours of 07:00 to 23:00 Monday to Saturday inclusive."

Effluent Monitoring Frequency

The frequency of monitoring of COD, BOD, Suspended Solids, Oils, Fats & Greases and DRO were seen by Wallace Recycling Ltd as particularly onerous. Having reviewed a selection of IPC licences available on the EPA website, the normal frequency for monitoring of water emissions would appear to be quarterly. Agreement was sought

from Westmeath County Council to reduce the monitoring requirements to quarterly. This was agreed in July 2013 and the Agency's agreement was then sought. Approval to reduce all surface water and foul water monitoring to quarterly was granted by the Agency in August 2013.

OTHER CHANGES:



As stated earlier a receiver, Mr. George Maloney of Baker Tilly Ryan Glennon was appointed in November 2012. During 2013 there were a number of resource issues due mainly to staff turnover which included a key member of the management team. The management structure up to December 2013 can be found on page 5 of this AER. From November 2012 the business was managed as a going concern by the receiver with a view to selling the business as a going concern. Enviroguide Consulting were contracted in June 2013 to provide ongoing compliance advice and guidance to the management team.

As part of the licence transfer which included a CRAMP and ELRA process it was deemed necessary to carry out site investigations to determine if there was any contamination of soil or groundwater in particular in the areas where de-pollution of End of Life Vehicles was carried out. A programme of site investigations was agreed with the Agency which included 4 boreholes and 2 trial pits. A full report was submitted to the Agency and was approved. A round of groundwater monitoring subsequent to this was also carried out and the results found to be in line with Interim Guideline Values. Further groundwater monitoring will be carried out on an annual basis or more regularly if required.

The full detailed stage 1 and stage 2 reports together with the results have been submitted to the Agency via the ALDER portal.

C. ENVIRONMENTAL POLICY STATEMENT

WALLACE
RECYCLING LTD



Unit 16/17, Mullingar Business Park,
Mullingar, Co. Westmeath
Tel: 044-47177 Fax: 044-34795
Email: wallacerecycling@eircom.net
Website: www.wallacerecycling.com

Commercial & Domestic Wheelie Bin Service,
Skip Hire, Waste Management
& Recycling Specialists

ENVIRONMENTAL POLICY STATEMENT

Wallace Recycling Ltd is a recycling and waste management company. Established in 1995, the company is a market leader in providing waste collection and recycling services to domestic, industrial and commercial clients. Wallace Recycling Ltd operate a waste transfer and recycling facility at Mullingar Business Park, Mullingar, Co Westmeath. This site provides facilities for handling and recycling wastes from a wide range of sources.

Wallace Recycling Ltd operations have a positive environmental impact and help Irish households and industry to effectively manage and recycle their wastes. However, we are aware of the need to reduce the environmental impact of waste disposal and the over-reliance of landfill as a waste disposal option.

Consequently, Wallace Recycling Ltd regard recycling, waste minimisation and environmental protection as an ongoing and essential part of our business. We will therefore take all reasonable steps to assist our clients to reduce the quantities of waste disposal to landfill and ensure that our own operations do not have a negative impact on the environment.

Wallace Recycling Ltd will strive to meet these commitments by:

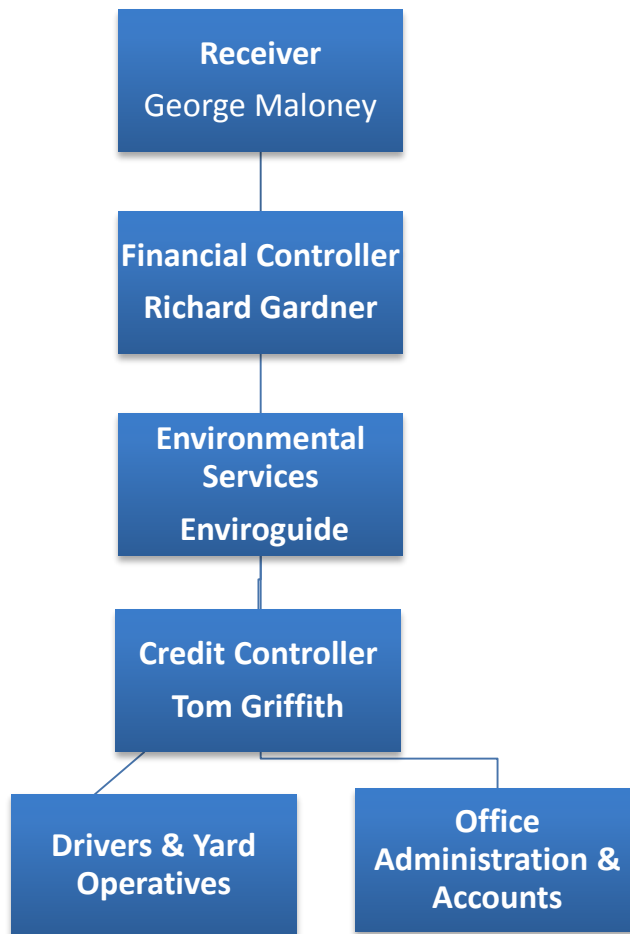
- conforming to relevant environmental standards, licences and legislation relating to our business,
- continually improving our operations by setting and reviewing environmental objectives and targets,
- preventing pollution from our transfer and recycling facility by monitoring and assessing our activities and emissions,
- reviewing options to recycle waste and divert from landfill disposal,
- assisting our clients to segregate and make their wastes available for recycling,
- communicating our environmental policy to all employees and ensuring that they have the knowledge, resources and authority to implement this policy,
- ensuring that the proper managerial, technical and administrative controls shall operate in order to enable this policy to be maintained at all levels,
- making our environmental policy available to the public and interested parties.

Whilst all Wallace Recycling Ltd employees have a duty to ensure that our operations do not cause environmental pollution, the overall responsibility for environmental protection lies with the Managing Director.

Signed: *Michael Wallace*
Michael Wallace
Managing Director
Wallace Recycling Ltd Date: January 2005

Directors: M. Wallace & L. Wallace Printed on Recycled Stock

D. WALLACE RECYCLING ORGANISATIONAL CHART 2013



1. SUMMARY INFORMATION

1.1 EMISSIONS FROM FACILITY

Wallace Recycling Ltd implements an environmental monitoring programme to assess the significance of emissions from our facility activities. The programme includes dust monitoring, emissions to sewer and noise monitoring. The monitoring locations are shown on Drawing No. Map J.1 Site Monitoring Locations in Appendix 1. The surface water and foul water monitoring points are SW1 for surface water, FW1 and FW2 respectively for foul water.

An overview of the results of the monitoring is presented in this section, with summary data in tables also included. The results are discussed in the context of the impact of the emissions on the environment and compared with available data on background and/or ambient conditions.

1.1 Dust Monitoring

Wallace Recycling Ltd is required to conduct quarterly dust monitoring using the Bergerhoff method at four on-site locations (D1, D2, D3, and D4). The licence requirement to monitor dust on a quarterly basis was not met as monitoring was only carried out once in 2013. A programme has been put in place to ensure dust levels are monitored each quarter as required in 2014; Oldcastle Laboratory, Oldcastle, Co. Meath will be performing the analysis on these samples.

The single monitoring event conducted for dust was at D1 in February 2013 and showed that the dust deposition limit (350 mg/m³/day) was not exceeded at this point. The results of the dust monitoring performed are included in Table 1.1 below.

Table 1.1 Results of Dust Monitoring 2013:

Date	Sample Reference	Actual	
16/08/2011	D1	61.63	mg/m ² /day
	D2		mg/m ² /day
	D3		mg/m ² /day
	D4		mg/m ² /day

30 day composite sample with the results expressed as mg/m³ /day.

1.2 Emissions to Sewer Monitoring

These samples are taken from the locations FW1 and FW2.

Schedule C C.3.2 Monitoring of Emissions to Sewer states that the following parameters must be monitored:

Volume to be emitted: Maximum in any 1 day: 10m³; Maximum rate per hour: 5m³

<i>Parameter</i>	<i>Monitoring Frequency</i>	<i>Analysis Method/ Technique</i>
<i>Flow</i>	<i>Annual</i>	<i>On-line flow meter with recorder</i>
<i>Temperature</i>	<i>Annual</i>	<i>On-line temperature probe with recorder</i>
<i>pH</i>	<i>Annual</i>	<i>pH electrode/meter and recorder</i>
<i>Chemical Oxygen Demand</i>	<i>Annual</i>	<i>Standard method</i>
<i>Biochemical Oxygen Demand</i>	<i>Annual</i>	<i>Standard method</i>
<i>Suspended Solids</i>	<i>Annual</i>	<i>Gravimetric</i>
<i>Oils, Fats & Greases</i>	<i>Annual</i>	<i>Standard method</i>
<i>Diesel Range Organics</i>	<i>Annual</i>	<i>Standard method</i>

The frequency of monitoring of COD, BOD, Suspended Solids, Oils, Fats & Greases and DRO are seen by Wallace Recycling Ltd as particularly onerous. Having reviewed a number of IPC licences available on the EPA website, the normal frequency for monitoring of water emissions would appear to be quarterly.

Agreement was sought from Westmeath County Council to reduce the monitoring requirements to quarterly. This was agreed in July 2013 and the Agency's agreement was then sought. Approval to reduce all surface water and foul water monitoring to quarterly was granted by the Agency in August 2013.

A full programme of monitoring will be carried out in accordance with the licence conditions (revised) in 2014.

Monitoring results from the sampling carried out in 2013 are presented below.

Results are presented below:

<i>January</i>				
<u>Date</u>	<u>Parameter</u>	<u>Actual</u>	<u>Emission Limit Value</u>	
31/01/2013	PH	6.5	6 to 8	
			mg/l	kg/day
	BOD	5.5	100	2
	COD	16	250	2.5
	Suspended Solids	8	50	1
	Oils Fats Grease	2.0	10	-
	Diesel Organics	Range <0.01	2	-
<i>February</i>				
<u>Date</u>	<u>Parameter</u>	<u>Actual</u>	<u>Emission Limit Value</u>	
14/02/2013	PH	6.8	6 to 8	
			mg/l	kg/day
	BOD	4.5	100	2
	COD	16	250	2.5
	Suspended Solids	4.0	50	1
	Oils Fats Grease	1.6	10	-
	Diesel Organics	Range <0.01	2	-
<i>March</i>				
<u>Date</u>	<u>Parameter</u>	<u>Actual</u>	<u>Emission Limit Value</u>	
14/03/2013	PH	6.4	6 to 8	
			mg/l	kg/day
	BOD	7	100	2
	COD	18	250	2.5
	Suspended Solids	8	50	1
	Oils Fats Grease	1.2	10	-
	Diesel Organics	Range <0.01	2	-
<i>August</i>				
<u>Date</u>	<u>Parameter</u>	<u>Actual</u>	<u>Emission Limit Value</u>	
08/08/2013	PH	7.39	6 to 8	
			mg/l	kg/day
	BOD	8.2	100	2
	COD	62	250	2.5
	Suspended Solids	NC	50	1
	Oils Fats Grease	NC	10	-
	Diesel Organics	Range 0.01	2	-

These results are for FW1. FW2 was dry throughout and therefore unable to be sampled.

1.3 Noise Monitoring

Noise monitoring survey was not performed in 2013. However Noise Monitoring will be carried out in early 2014 and the results reported to the Agency.

2. WASTE MANAGEMENT ACTIVITIES

The EPA Waste Licence allows Wallace Recycling Ltd to accept and process on-site for recovery and disposal, 50,000 tonnes of waste per annum, comprising commercial/industrial non-hazardous waste, household waste and construction & demolition wastes. Waste processing takes place inside the waste transfer station building.

2.1 Waste Types

The facility is licensed to accept the following waste types as specified in Schedule A2 Waste Acceptance:

Waste Type	Maximum (Tonnes per Annum)
Household Waste	10,000
Commercial and Industrial Waste	30,000
Construction and Demolition Waste	10,000
Total	50,000 <small>Note 1</small>

Note 1: The individual limitation on waste streams may be varied with the agreement of the Agency subject to the overall limit staying the same.

Hazardous waste is not accepted at the facility, with the exception of small quantities of that which inadvertently arrive in waste deliveries, for example batteries. Any materials suspected either to be hazardous or not acceptable under licence conditions (e.g. gas cylinders, chemical drums etc.) are temporarily stored on-site in the waste quarantine area, before removal off-site for treatment/disposal at an appropriate facility.

Household, Commercial & Industrial Waste Containing Putrescible Materials

Household, Commercial & Industrial wastes (originating in factories, hotels, pubs and supermarkets) containing an organic fraction are either deposited on the floor of the transfer building, or tipped directly into open trailers. All the household waste deposited on the floor is either pushed into an open trailer, or compacted for removal off-site for disposal at an off-site landfill, as agreed with the Agency.

Industrial & commercial waste is inspected and segregated into recyclables and non-recyclables. All uncontaminated cardboard and plastic packaging material, which is suitable for baling, is collected for recycling or delivered to authorised recyclers. Tin cans are collected, baled and stored on-site pending removal off-site for recycling. Glass

bottles, which are either segregated prior to arrival on site, or deposited at the civic amenity area, are stored on-site pending removal for recycling off-site.

Non Putrescible Household and Commercial Waste

Non putrescible household wastes, arising from the kerbside collection, and non-putrescible commercial/industrial waste is deposited onto the floor of the transfer building and inspected for disposable and/or recoverable fractions. Non recyclable/recoverable wastes are stored within the building before transfer for disposal to an off-site landfill, as agreed with the Agency.

Construction and Demolition Waste

All construction and demolition waste is inspected to determine if it is suitable for transfer and/or recovery. Wood and metal are separated using a mechanical grab and subsequently removed off-site to an approved recovery/recycling facilities. The remaining fraction is also sent for further recycling to a Materials Recovery Facility (MRF). Currently the treatment of this type of waste is not being carried out on site and the trommel was mothballed in late 2011 and not used in 2013.

Wood, Timber and Green Waste

Wood and timber delivered to and recovered on-site is collected and removed off-site for recovery. Green waste delivered to the facility is stored pending transfer to an offsite composting facility.

End of Life vehicles

End of life vehicles were accepted onto the site for de-pollution up to early 2012. However this activity ceased and no End of Life Vehicles were accepted into the facility in 2013.

Civic Amenity Facilities

There are a number of containers located at the facility, which are provided for use by the general public for deposition of household waste and recyclables including plastic, timber, cans, glass, metals and textiles. The materials collected in these are removed off-site for recovery/recycling.

3. RESOURCE CONSUMPTION SUMMARY

3.1 *Energy consumption.*

Energy at the facility is provided by electricity supplied by the ESB; there are no boilers or burners of other fuel types used on site.

Electricity usage for January to December 2013 based on consumption and cost reports from the Energia was 19.50 Megawatts, this shows a decrease from 28.20 Megawatts used in 2012. This is in line with the reduction in activity on site.

3.1.2 *Fuel usage*

The light fuel (diesel) usage in 2013 at the facility was 88,000 litres. This is a decrease of approximately 20% on 2012. This is in line with reduced activity on site.

3.2 *Water Consumption from Municipal Supply.*

The water supplied to the site is via mains from the municipal supply managed by Westmeath County Council. Water is not used extensively in the waste transfer process itself; the main consumption of water on-site is through domestic usage, i.e. toilets and canteen, with a certain volume used for the wheel wash.

Based on the latest water meter reading information supplied by Westmeath County Council, the water usage in 2013 was 120m³.

4. ENVIRONMENTAL COMPLAINTS & ENVIRONMENTAL INCIDENTS SUMMARY

4.1 *Environmental Complaints:*

During 2013 there were no formal environmental complaints received from members of the public relating to the services provided by Wallace Recycling Ltd. A procedure is in place to deal with these issues should they arise, the objective being to establish the root cause of the complaint in order to prevent a recurrence.

4.2 *Environmental Incidents:*

No environmental incidents were reported to the EPA in 2013. A non-compliance was given for failure to report exceedance of duty and standby capacity in May 2013 when a large quantity of waste was stockpiled in the transfer building.

There is a system in place to ensure that all incidents which could have an environmental impact are reported in writing to the EPA.

5. SCHEDULE OF OBJECTIVES & TARGETS AND EMP for 2013

5.1 *EMP- Review of EMP proposed for 2013*

	Objective	Target	Achieved/Not Achieved
1	Continual improvement of EMS & environmental compliance	Develop an internal audit schedule for all EMS processes & procedures.	Not Achieved
		Internal audits to be carried out throughout the year to ensure all processes/procedures are audited at least once per annum.	Achieved
		Corrective actions to be closed off in a timely manner & resources provided as required.	Achieved
2	Facility resource management	Carry out upgrades/repairs to yard and Waste Transfer Building	Not achieved
		Carry out bund, tank & container integrity testing for diesel tanks. Carry out inspection of drains and upgrade as necessary.	Achieved for interceptor
3	Training & Development	Train staff on EMS and EPA licence	Not achieved

5.2 EMP- Proposed for 2014

	Objective	Target	Responsibility
1	Continual improvement of EMS & environmental compliance	Develop an internal audit schedule for all EMS processes & procedures.	Facility Manager
		Upgrade weighbridge software to improve waste data management	Facility Manager
		Internal audits to be carried out throughout the year to ensure all processes/procedures are audited at least once per annum.	Facility Manager
		Corrective actions to be closed off in a timely manner & resources provided as required.	Facility Manager
2	Facility resource management	Carry out upgrades/repairs to yard and Waste Transfer Building. Install doors on waste transfer building.	Facility Manager
		Carry out bund, tank & container integrity testing for diesel tanks. Install interceptor and silt trap as per technical amendment.	Facility Manager
3	Facility Security	Improve facility security by installing new security fencing between this facility and Unit 16/17	Facility Manager
4.	Training & Development	Train staff on EMS and EPA licence	Facility Manager

7. POLLUTION EMISSION REGISTER.

The PRTR is included in Appendix 2

8. DRAWING OF MONITORING LOCATIONS (IF AMENDED)

See Appendix 1 for map of monitoring locations. These will be amended in 2014 in accordance with Condition 6.18 of Technical Amendment A

9. TANK & PIPELINE TESTING & INSPECTION REPORT

Weekly in-house inspections are carried out of the interceptor, vehicle wash area and the drains at the main entrance and at Bays 1 & 2. The results and corrective actions required are recorded on the 'Weekly On Site Inspections' record. This system for inspection has been in place since 7th January 2005.

Tank & pipeline testing as required by Waste Licence Condition 3.11.5 and Schedule E have not been performed to date. These tests have been set to be completed in 2014.

10. ENERGY EFFICIENCY AUDIT REPORT SUMMARY

An energy audit was performed as required under Condition 7 of the Waste Licence. This was conducted by PowerTherm Solutions on 10th April 2008. Once this audit was completed a programme was developed to achieve energy and cost savings based on the recommendations made. This has not been updated since.

11. REPORT OF THE ASSESSMENT OF THE EFFICIENCY OF USE OF RAW MATERIALS IN PROCESSES & THE REDUCTION OF WASTE GENERATED

The reduction of wastes is a core part of the Wallace Recycling Ltd business ethos. Segregation systems are in place for the small quantities of waste generated as part of the Wallace Recycling Ltd office processes- segregation of office paper, cardboard and plastic plus the separation of domestic and canteen waste streams. The office recyclables are all processed with the other recyclables in the yard and sent for recycling with licensed waste contractors.

12. REPORT ON PROGRESS MADE & PROPOSALS BEING DEVELOPED TO MINIMISE WATER DEMAND & THE VOLUME OF TRADE EFFLUENT DISCHARGE

In 2006 a water tank was installed under the yard to gather rain water which will be used for the wheel wash. It is planned to review this in 2014 and consider the installation of

submersible pumps to complete this system. This will reduce the volumes of water used by the facility. The tank may provide extra retention capacity in the event of a fire.

13. DEVELOPMENT/ INFRASTRUCTURE WORKS SUMMARY

13.1 Development/Infrastructure works completed in 2013

No development or infrastructure works were carried out in 2013 due to the receivership situation.

13.2 Development/Infrastructure works planned for 2014

- Significant upgrade to waste transfer building including shuttered concrete walls, new cladding and new roller shutter doors.
- Upgrade of concrete in yard and inside waste transfer building
- Installation of drainage in the rear yard as per conditions of Technical Amendment A

14. REPORTS ON MANAGEMENT & STAFFING STRUCTURE OF THE FACILITY, AND A PROGRAMME FOR PUBLIC INFORMATION

Refer to Section D, 5 for management and staffing structure.

An on-line form has been established on the Wallace Recycling Ltd website (http://www.wallacerecycling.com/complaint_feedback_form.htm) to allow members of the public to make a complaint or give feedback about any aspect of the services provided.

A public information file is maintained at the facility.

15. REVIEW OF CLOSURE, RESTORATION & AFTERCARE MANAGEMENT PLAN

A Closure Plan has been prepared for the facility as a Restoration, Aftercare Management Plan. This is based on a 'clean closure' scenario. The cost associated with the unexpected closure of the facility is estimated at €63,750 as illustrated below. (This is based on 2013 rates.)

Item	Removal Cost	Total
Removal of waste and recyclables (assume 500 tonnes)	€110 per tonne	€22,000
Waste Plant and picking line decommissioning and removal		€15,000
Repairs to building		Currently being carried out and therefore removed from the CRAMP
Cleaning and De-contamination		€2,000
Due diligence audit by professional consultant		€2,000
Subtotal		€51,000
Contingency (25%)		€12,750
Total		€63,750

The cost of the above will be partially offset by the sale of the plant and equipment.

16. ENVIRONMENTAL LIABILITIES STATEMENT

An ELRA was compiled in October 2010 which resulted in the Wallace Recycling Ltd. Being classified as Category 2. In accordance with section 3.2 of the Agency's guidance, a closure plan is required but a Restoration and Aftercare Management Plan is not required. This has now been updated in October 2013 and is written as a site specific ELRA as part of the receivership process. The CRAMP and ELRA carried out as part of the license transfer process has been approved by the EPA as has the financial provision provided by Mulleadys Ltd.

The potential for unknown liabilities to arise has been considered and financially provided for by way of ensuring that the following potential risks are covered by the financial provision instruments.

The following potential risks have been included:

- Land contaminated from spillages
- Spillages/Leaks from diesel tank
- Leaks from effluent drains
- Fire and failure/overspill from fire water storage
- Disposal of contaminated firewater

The potential consequences of the above are assessed in the table below and costing provided where possible:

Risk ID	Description	Revised occurrence rating	Likelihood of occurrence Range (%)	Revised severity rating	Cost Range	W/C Prob (%) A	W/C Severity (€) B	Most likely Cost = AxB
12	Vermin Infestation	2	5-10	2	1,000 to 10,000	50	10,000	1,000
10	Uncontrolled release of oils/lubricants or chemicals to groundwater or soil	4	20-50	4	100,000 to 500,000	50	500,000	250,000*
8	Uncontrolled release of oils/lubricants or chemicals to surface water	3	10-20	2	1,000 to 10,000	20	10,000	2,000
11	Improper disposal of waste generated on site	3	10-20	2	1,000 to 10,000	20	10,000	2,000

4	Accidental/unauthorised delivery of hazardous material, other wastes	3	10-20	2	1,000 to 10,000	20	10,000	2,000
9	Odours emanating from the facility	3	10-20	2	1,000 to 10,000	20	10,000	2,000
3	Fire causing release of poisonous/noxious gases	2	5-10	2	1,000 to 10,000	20	10,000	2,000
2	Excessive noise	1	0-5	2	1,000 to 10,000	5	10,000	500
1	Uncontrolled release of dust to air	1	0-5	2	1,000 to 10,000	5	10,000	500
5	Loss of integrity of fuel bund	1	0-5	2	1,000 to 10,000	5	10,000	500
6	Uncontrolled release of lead/acid from batteries	1	0-5	1	0 to 1,000	10	1,000	50
7	Mobile fuel tanker accident	1	0-5	2	1,000 to 10,000	5	10,000	500

Having reviewed our process activities it has been concluded that potential future liabilities are as detailed above. Site investigations have shown that there is little or no risk of contamination to soil or groundwater. Therefore this risk is removed. As the cost of the total combined risks will be less than €25,000 it has been agreed with the Agency that this amount is adequate financial provision. Therefore a bond in the amount of €88,750 (combined CRAMP and ELRA amounts) has been set up in favour of the Agency.

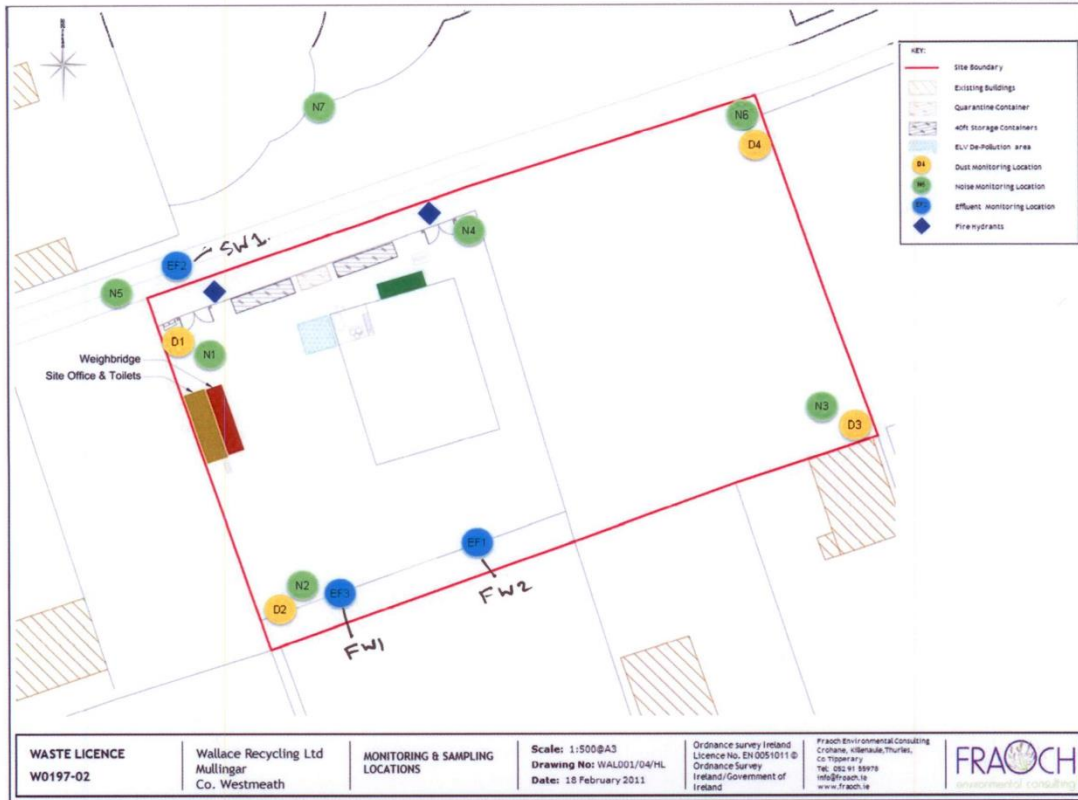
17. ANY OTHER ITEMS SPECIFIED BY THE EPA

None specified.

**APPENDIX 1 MONITORING LOCATIONS 2013
REVISED BOUNDARY TECHNICAL AMENDMENT A**



Annual Environmental Report 2011
Wallace Recycling Ltd.





APPENDIX 2: INCOMING OUTGOING WEIGHTS AND PRTR 2013

INCOMING WEIGHTS

Material Type	EWC CODE	Weight Tonnes
Iron and Steel	17 04 05	438.25
Plastic	16 01 09	0.12
End of Life Vehicles (depolluted)	16 01 06	35.08
Soil and Stone	17 05 04	2.30
Concrete	17 01 01	59.64
Paper and Cardboard	15 01 01	65.92
Glass	17 02 02	0.7
Timber	17 02 01	74.92
Gypsum	17 08 02	0.80
Plastic Packaging	15 01 02	17.56
WEEE	16 02 13*	0.28
Glass	20 01 02	6.36
Green Waste	20 02 01	7.10
Paper and Cardboard	20 01 01	0.42
Plastic	20 01 39	29.04
Bulky Waste	20 03 07	1743.78
Mixed Municipal Waste	20 03 01	2359.88

Total incoming material was 4842.15 tonnes.

OUTGOING WEIGHTS

Material Type	EWC CODE	Weight Tonnes
Aluminium	17 04 02	1.30
Batteries	20 01 33*	18.62
End of Life Vehicles (depolluted)	16 01 06	29.56
Copper	17 04 01	4.28
Concrete	17 01 01	262.02
Paper and Cardboard	15 01 01	46.80
Mixed C&D Waste	17 01 07	105.64
Glass	16 01 20	4.02
Wood	17 02 01	150.16
Iron and Steel	17 04 05	665.76
Plastic	17 02 03	6.80
WEEE	16 02 13*	0.28
Interceptor Sludge	19 08 05	1.06
Street Cleaning Residue	20 03 03	230.02
Green Waste	20 02 01	5.36
Textiles	20 01 11	0.42
End of Life Tyres	16 01 03	39.72
WEEE	16 02 13*	6.38
WEEE	20 01 36	2.84
Bulky Waste	20 03 07	785.60
Mixed Municipal Waste	20 03 01	3782.91

The total waste out is 6149.25 tonnes. The reason for the difference between the waste in and waste out tonnages is that there was a large amount of waste stored on site in early 2013 and this was removed in the first quarter of 2013.



| PRTR# : W0197 | Facility Name : | Filename : w0197_2013.xls | Return Year : 2013 |

[Guidance to completing the PRTR workbook](#)

AER Returns Workbook

Version 1.1.18

REFERENCE YEAR	2013
-----------------------	------

1. FACILITY IDENTIFICATION

Parent Company Name	Mulleady's Limited
Facility Name	
PRTR Identification Number	W0197
Licence Number	W0197-02

Waste or IPPC Classes of Activity

N	class name
	Storage of waste intended for submission to any activity referred to in a preceding paragraph of this Schedule, other than temporary storage, pending collection, on the premises where such waste is produced.
4.13	Blending or mixture prior to submission to any activity referred to in a preceding paragraph of this Schedule.
3.11	Storage prior to submission to any activity referred to in a preceding paragraph of this Schedule, other than temporary storage, pending collection, on the premises where the waste concerned is produced.
3.13	Recycling or reclamation of organic substances which are not used as solvents (including composting and other biological transformation processes).
4.2	Recycling or reclamation of metals and metal compounds.
4.3	Recycling or reclamation of other inorganic materials.
4.4	
Address 1	Units 16-17 Mullingar Business Park
Address 2	Mullingar
Address 3	Co Westmeath
Address 4	
	Westmeath
Country	Ireland
Coordinates of Location	-9.17642 54.1592
River Basin District	IEGBNISH
NACE Code	3832
Main Economic Activity	Recovery of sorted materials
AER Returns Contact Name	Jim Dowdall
AER Returns Contact Email Address	jdowdall@enviroguide.ie
AER Returns Contact Position	Environmental Consultant
AER Returns Contact Telephone Number	01 2711896
AER Returns Contact Mobile Phone Number	086 8048500
AER Returns Contact Fax Number	01 2711897

Annual Environmental Report 2013

5. ONSITE TREATMENT & OFFSITE TRANSFERS OF WASTE | PRTR#: W0197 | Facility Name: | Filename: w0197_2013.xls | Return Year: 2013 |

27/03/2014 13:40

Please enter all quantities on this sheet in Tonnes

0

Transfer Destination	European Waste Code	Hazardous	Quantity (Tonnes per Year)	Description of Waste	Waste Treatment Operation	Method Used		Location of Treatment	Haz Waste: Name and Licence/Permit No of Next Destination Facility Non Haz Waste: Name and Licence/Permit No of Recover/Disposer	Haz Waste: Address of Next Destination Facility Non Haz Waste: Address of Recover/Disposer	Name and License / Permit No. and Address of Final Recoverer / Disposer (HAZARDOUS WASTE ONLY)	Actual Address of Final Destination i.e. Final Recovery / Disposal Site (HAZARDOUS WASTE ONLY)
						M/C/E	Method Used					
Within the Country	15 01 01	No	46.8	paper and cardboard packaging	R12	M	Weighed	Offsite in Ireland	Mulleadys Waste, W0169-01 John Gannon Concrete, WFP-WM-2009-0007-01	Cloonaugh, Drumlish, Co. Louth, Ireland Hazelwood , Kilbeggan, Co. Westmeath, Ireland		
Within the Country	17 01 07	No	105.64	mixed c&d materials	R12	M	Weighed	Offsite in Ireland	Mulleadys Waste, W0169-01	Cloonaugh, Drumlish, Co. Louth, Ireland The Murrough		
Within the Country	16 01 03	No	39.72	end-of-life tyres	R12	M	Weighed	Offsite in Ireland	Mulleadys Waste, W0169-01	Cloonaugh, Drumlish, Co. Louth, Ireland		
Within the Country	16 01 06	No	22.56	depolluted end-of-life vehicles	R4	M	Weighed	Offsite in Ireland	Multimetals, WFP-WW-09-0014-01	, Wicklow, Co. Wicklow, Ireland		
Within the Country	16 01 06	No	7.02	depolluted -of-life vehicles	R4	M	Weighed	Offsite in Ireland	Mullingar Car Dismantlers, WP/54/2004/2 John Gannon Concrete, WFP-WM-2009-0007-01	Mullingar Industrial Park, Mullingar, Co. Westmeath, Ireland		
Within the Country	16 01 20	No	4.02	Glass	R4	M	Weighed	Offsite in Ireland	Concrete, WFP-WM-2009-0007-01	Crossdoney, Cavan, Co. Cavan, x, Ireland		
To Other Countries	16 06 01	Yes	18.62	lead batteries	R12	M	Weighed	Abroad	Rilta Enviromental, WCP-DC-09-1192-01	151 Thomas Street, Dublin 8, Co. Dublin, Ireland	HJ Enthoven, BI5598, Darley Dale, Matlock, Derbyshire, United Kingdom	Darley Dale, Matlock, Derbyshire, United Kingdom
Within the Country	16 02 13	Yes	6.38	WEEE	R4	M	Weighed	Offsite in Ireland	KMK Metal Recycling, W0113-03	, Co. Offaly, Ireland		
Within the Country	17 02 01	No	62.38	wood	R3	M	Weighed	Offsite in Ireland	Mulleadys Waste, W0169-01	Cloonaugh, Drumlish, Co. Louth, Ireland ngford, Ireland		

Annual Environmental Report 2013

Within the Country	02 01	No	41.74 wood	R3	M	Weighed	Offsite in Ireland	Conroy Recycling Ltd,WFP- WH-2009-0002-01	Slanebeg,Mullingar,..Co.We stmearth,Ireland Killeen
Within the Country	17 02 01	No	46.04 wood	R3	M	Weighed	Offsite in Ireland	Thorntons Recycling,W044- 02	Road,Ballyfermot,Co. Dublin,..Ireland
Within the Country	17 02 03	No	6.8 Plastics	R4	M	Weighed	Offsite in Ireland	Mulleadys Waste,W0169-01	Cloonaugh,Drumlish,..Co.Lo ngford,Ireland
Within the Country	17 04 01	No	4.28 Copper	R4	M	Weighed	Offsite in Ireland	Mulleadys Waste,W0169-01	Cloonaugh,Drumlish,..Co.Lo ngford,Ireland
Within the Country	17 01 01	No	262.02 Concrete	R4	M	Weighed	Offsite in Ireland	Mulleadys Waste,W0169-01	Cloonaugh,Drumlish,..Co.Lo ngford,Ireland The Murrough
Within the Country	17 04 05	No	166.32 Iron and steel	R4	M	Weighed	Offsite in Ireland	Multimetals ,WFP-WW-09- 0014-01	..Wicklow,Co.Wicklow,Irela nd
Within the Country	17 04 05	No	24.34 Iron and steel	R4	M	Weighed	Offsite in Ireland	Mulleadys Waste,W0169-01	Cloonaugh,Drumlish,..Co.Lo ngford,Ireland
Within the Country	17 04 05	No	59.66 Iron and steel	R4	M	Weighed	Offsite in Ireland	A 1 Metal ,AFT WMP 007e	aois ,Ireland
Within the Country	17 04 05	No	415.44 Iron and steel	R4	M	Weighed	Offsite in Ireland	National Recycling,WFP-DS- 10-005-01	Station Road,Clondalkin,Co Dublin,..Ireland Glen abbey
Within the Country	20 01 11	No	0.38 textiles	R4	M	Weighed	Offsite in Ireland	Textile Recycling,WPR014/2	Complex,Belgard,Tallaght .Dublin 24,Ireland Killinagh
Within the Country	20 03 01	No	2156.52 mixed municipal waste	D1	M	Weighed	Offsite in Ireland	Drehid Landfill,W0201-03	Upper,Carbury,..Co. Kildare,Ireland
Within the Country	20 03 01	No	1626.39 mixed municipal waste	R12	M	Weighed	Offsite in Ireland	Mulleadys Waste,W0169-01	Cloonaugh,Drumlish,..Co.Lo ngford,Ireland
Within the Country	20 03 07	No	754.74 bulky waste	R12	M	Weighed	Offsite in Ireland	Mulleadys Waste,W0169-01	Cloonaugh,Drumlish,..Co.Lo ngford,Ireland
Within the Country	20 03 07	No	30.86 bulky waste	R3	M	Weighed	Offsite in Ireland	AES Environmental,W0104- 01	Tullamore,Co. Offaly,..Ireland
Within the Country	19 08 05	No	1.06 interceptor waste	R4	M	Weighed	Offsite in Ireland	Mulleadys Waste,W0169-01	Cloonaugh,Drumlish,..Co.Lo ngford,Ireland
Within the Country	20 03 03	No	230.02 street cleanings	R12	M	Weighed	Offsite in Ireland	Mulleadys Waste,W0169-01	Cloonaugh,Drumlish,..Co.Lo ngford,Ireland Cappincur Industrial Estate,Daingean
Within the Country	20 01 36	No	2.84 WEEE	R4	M	Weighed	Offsite in Ireland	KMK Metal Recycling,W0113-03	Road,Tullamore .Co.Offaly,Ireland
Within the Country	20 02 01	No	5.36 biodegradeable waste	R4	M	Weighed	Offsite in Ireland	Enrich Environmental Ltd,WFP/MH/08/0004/01	Larch Hill,Kilcock,Co. Meath,..Ireland
Within the Country	17 04 02	No	1.3 aluminium	R4	M	Weighed	Offsite in Ireland	National Recycling,WFP-DS- 10-005-01	Station Road,Clondalkin,Co Dublin,..Ireland