



*Site: Ballymount Road, Walkinstown, Dublin 12.*

*Waste Licence Number W0263-01*

## *Annual Environmental Report*

*01<sup>th</sup> January 2013 – 31<sup>st</sup> December 2013*

---

**Table of Contents**

Table of Contents ..... 2

1.0 Introduction..... 4

    1.1 Company details..... 4

    1.2 Management Structure ..... 5

    1.3 Financial Provision ..... 5

    1.4 Environmental Policy..... 5

    1.5 Activities ..... 6

    1.6 Waste Activities carried out at the Facility..... 6

    1.7 Water Usage:..... 7

2.0 Summary Information..... 7

    2.1 Waste Received..... 7

    2.2 Waste Transferred Off-Site for Disposal or Recovery ..... 8

    2.3 Summary report on emissions and interpretation of environmental monitoring ..... 8

        2.3.1 *Surface Water*..... 8

        2.3.2 *Dust Emissions*..... 8

        2.3.3 *Noise Emissions* ..... 10

        2.3.4 *Bund, pipe and underground storage tanks integrity* ..... 11

        2.3.5 *Summary of resource and energy consumption* ..... 11

        2.3.6. *Water*..... 11

    2.4 Site infrastructure..... 11

        2.4.1 *In-place* ..... 11

    2.5 Progress report on proposals developed to minimise water demand..... 12

    2.6 PRTR Emission..... 12

3.0 Environmental objectives and targets – 2013. .... 13

    3.1 Summary of reported incidents and complaints..... 15

        3.1.1 *Reported Incidents Summary* ..... 15

        3.1.2 *Complaints:* ..... 15

    3.2 Review of nuisance controls ..... 15

        3.2.1 *Odour* ..... 15

        3.2.2 *Noise* ..... 15

        3.2.3 *Dust* ..... 15

        3.2.4 *Vermin*..... 15

        3.2.5 *Flies*..... 16

---

3.2.6 <i>Birds</i> .....	16
3.2.7 <i>Litter</i> .....	16
4.0 Development of Procedures on Site.....	16
5.0 Pollution Emission Register.....	17
6.0 Report on Programme for Public Information .....	17
Appendix A.....	18
Appendix B .....	19
Appendix C .....	20
Appendix D.....	21

## **1.0 Introduction**

Panda were granted the EPA Waste Licence W0263-01 on the 26<sup>th</sup> January 2011. This replaces the Waste Permit WPR 021/2 issued by South Dublin County Council. Under this licence, Panda will be able to process initially 150,000 tonnes per annum. Appendix A illustrates the current site layout.

### 1.1 Company details

Licence No:	W0263-01
Name:	Irish Packaging Recycling Ltd
Address:	Ballymount Road, Walkinstown, Dublin 12.
Telephone Number:	01 4602011
Fax Number:	01 4602210
Website:	<a href="http://www.panda.ie">www.panda.ie</a>

### 1.2 Management Structure

There are 30 employees either working directly or indirectly at the facility. Appendix B illustrates the organisational structure of the facility.

### 1.3 Financial Provision

A statement from our accountants is provided in Appendix C. At the present time the annual turnover and company assets are sufficient to offset environmental liabilities incurred during the course of operations and in the event that the company is closed.

### 1.4 Environmental Policy

In carrying out our function, IPR/Panda acknowledge that our activities impact upon the environment both through routine internal operations and the actions of our staff.

It is Panda's policy to protect the environment during all activities, both on and off-site.

This is achieved by:

- Strategic preparation and implementation of operating procedures (including an emergency response procedure).
- Utilizing BAT (Best Available Technology).
- Actively promoting environmental awareness amongst staff and clients through appropriate training and communication programs.
- Reduce energy use through effective education and awareness and the installation of energy efficient technology where appropriate.
- Implementing a policy of continuous improvement, by means of targeted objectives. All objectives and targets are monitored and up-dated accordingly.

IPR/Panda are committed to complying with all relevant environmental regulations and aim to supply a safe competitive and sustainable service with specific regards to the surrounding environment.

---

## 1.5 Activities

Under the waste licence W0263-01, IPR conducts the following activities:

*Licensed Waste Recovery Activities, in accordance with the Fourth Schedule of the Waste Management Acts, 1996 to 2010*

**Class 2.**

Recycling or reclamation of organic substances which are not used as solvents (including composting and other biological processes) (P).

**Class 3.**

Recycling or reclamation of metals and metal compounds.

**Class 4.**

Recycling or reclamation of other inorganic materials.

**Class 13.**

Storage of waste intended for submission to any activity referred to in a preceding paragraph of this Schedule, other than temporary storage, pending collection, on the premises where such waste is produced.

IPR accept material from commercial and industrial sectors throughout Ireland. The normal facility operating hours are 6am-5pm (Monday-Friday) & 6am-2pm (Saturdays). The facility is licensed to accept non-hazardous wastes only.

## 1.6 Waste Activities carried out at the Facility

Material accepted and dispatched at the facility is weighed using Genesys weighbridge software. The facility is used as a baling station. The facility accepts predominantly source segregated paper, cardboard, plastic and hangers. No hazardous waste, putrescible waste or liquid wastes are accepted at the facility.

The material is initially sorted in the facility using skid steers and teleporters, then loaded into one of three balers for baling. The resultant bales are stored for onward movement.

There is a dual weighbridge for incoming and outgoing material.

**1.7 Water Usage:**

Water for dust suppression and fire fighting is taken from a holding tank located on a neighbouring paper premises. Water to the office and amenities is taken from municipal supply and is metered by the council.

Water usage in the facility consists of:

- Dust Suppression.
- Fire fighting

**2.0 Summary Information**

**2.1 Waste Received**

The waste received at the facility from the 1<sup>st</sup> January 2013 to the 31<sup>st</sup> December 2013 was 123,289.2 tonnes.

**Table 1.** Waste received in 2013

<b>EWC Code</b>	<b>Waste Description</b>	<b>Tonnage</b>
20 01 01	Paper and Cardboard	35,142.17
20 01 39	Plastic	186.81
20 03 01	Residue	771.85
15 01 01	Paper and Cardboard	77,201.02
15 01 02	Plastic Packaging	8,758.71
15 01 03	Wood	1,026.93
15 01 04	Steel	27
20 01 11	Textiles	12.48
16 01 03	Used Tires	161.68
20 01 36	Weee	0.55

## 2.2 Waste Transferred Off-Site for Disposal or Recovery

See Appendix D (PRTR) for the breakdown of the different destinations used for the waste removed off site by EWC Code.

**Table 2:** Outgoing destination and recovery rate.

Destination	Tonnage	%
Disposal	0	0
Recovery	120,969.425	100

## 2.3 Summary report on emissions and interpretation of environmental monitoring

Under Schedule C of the licence W0263-01, IPR are required to monitor storm water emissions, noise and ambient air monitoring (Dust). The following sub-headings detail the results from independent laboratories of the different parameters and the emission limit values ELV's set by the EPA and any complaints and incident that may have occurred during the year.

### 2.3.1 *Surface Water*

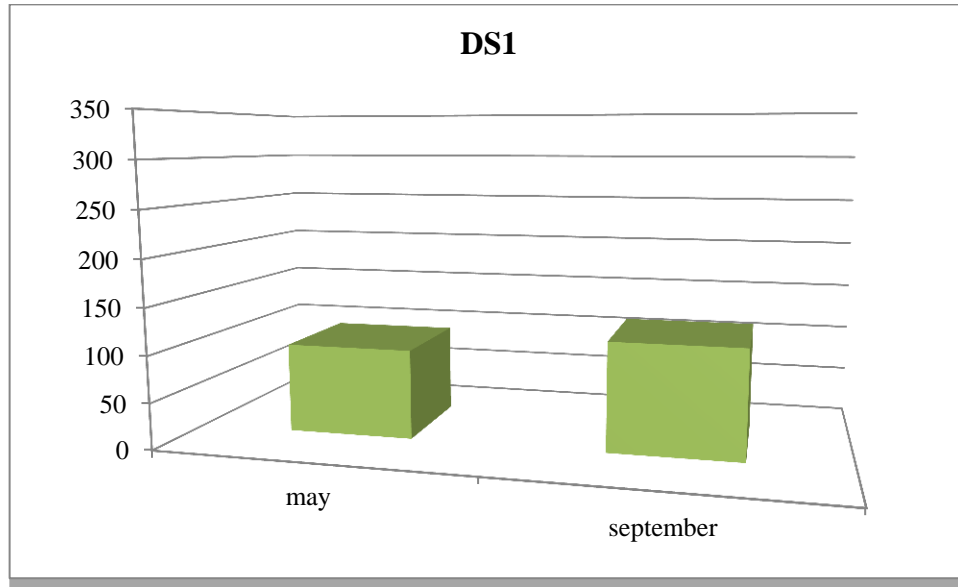
Storm water passes through a silt trap prior to being discharged to the stream to the South of the facility.

### 2.3.2 *Dust Emissions*

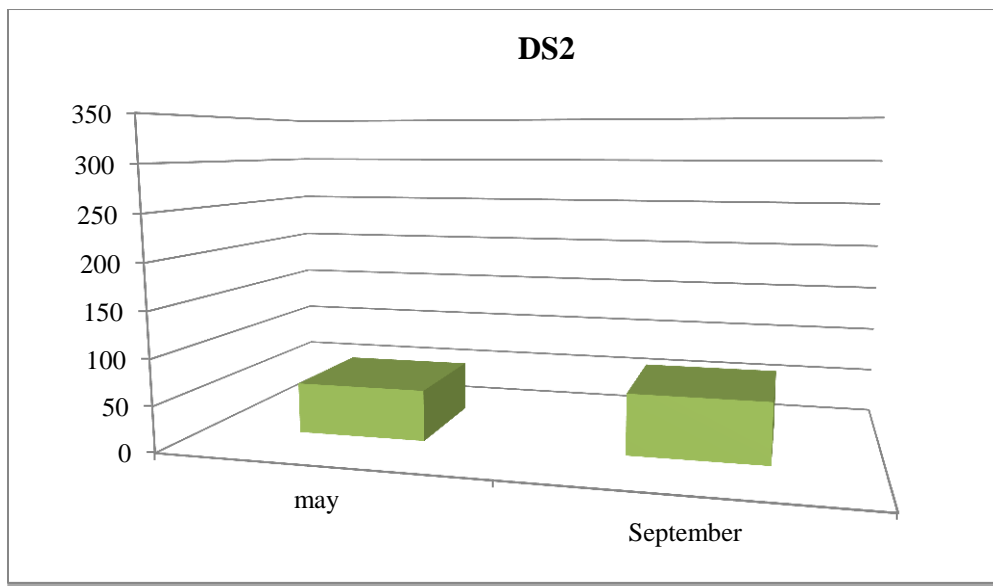
As per schedule B5 for dust deposition limits, there are currently three sampling locations (AD1, AD2 and AD3). Monitoring is required annually on site. Figs 1-3 illustrate dust recordings for 2013.



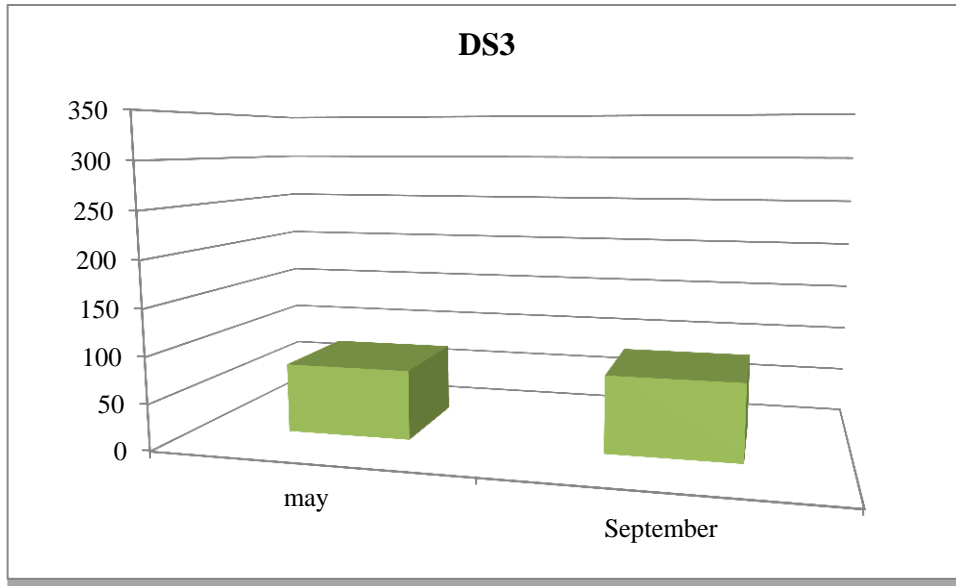
**Fig. 1:** Dust emission results for DS1 (AD1) in  $\text{mg m}^{-2} \text{d}^{-1}$



**Fig. 2:** Dust emission results for DS2 (AD2) in  $\text{mg m}^{-2} \text{d}^{-1}$



**Fig. 3:** Dust emission results for DS3 (AD3) in  $\text{mg m}^{-2} \text{d}^{-1}$



As per Schedule B.5, the dust deposition limit for the site is  $350 \text{ mg m}^{-2} \text{d}^{-1}$ . AD1, AD2 and AD3 are well within licenced ELV's.

### 2.3.3 Noise Emissions

Noise emissions are monitored according to Schedule B.4 and the emission limit values (ELV) set out in Schedule C.5 of the licence. An independent competent consultant was commissioned to conduct the noise sampling for the facility. Table 3 details results of noise monitoring conducted in 2013.

**Table 3:** Noise Emissions 2013

Location	Date	Time	Leq	L10	L90	Comments
AN1	19 <sup>th</sup> Dec '13	17.12	55.2	57.9	53.4	Road traffic was audible at 51/53 dBA
AN2	19 <sup>th</sup> Dec '13	17.24	53.1	53.8	52.8	Mainly noise from bobcat activity and trucks entering and leaving the site

NB The background noise from road traffic from surrounding road network was in the region of 52 dBA

#### 2.3.4 Bund, pipe and underground storage tanks integrity

The integrity and water tightness of all underground pipes, all tanks, bunding structures and containers and their resistance to penetration by water and other materials is required to be carried out every three years and thereafter and reported to the Agency. A bund, pipeline and UST integrity testing is scheduled for Q3 of 2013.

#### 2.3.5 Summary of resource and energy consumption

**Table 4:** Summary of Energy Consumption from 1<sup>st</sup> January 2013 to December 2013.

Resource	Quantity
Diesel	79,928 litres
Electricity	616445 KWhr

#### 2.3.6. Water

Water is obtained from a shared holding tank and water for the office and amenities is obtained from the municipal water supply.

### 2.4 Site infrastructure

The following are details on infrastructure in the facility.

#### 2.4.1 In-place

The current site infrastructure is outlined below (List 1). List 2 details the waste processing equipment used on site.

**List 1:** Current site infrastructure

1. Offices
2. Dual Weighbridge.

3. One x Waste processing building
4. One sprinkling system
5. Canteen & toilets.
6. Fuel Depot
10. Fencing around the site

**List 2: Waste processing equipment**

- 1 x Skid Steer
- 7 x Forklifts
- 1 x Roadsweeper
- 2 x Teleporters

There is sufficient back up within the group if the skid steers, forklifts or the teleporter's break down.

**2.5 Progress report on proposals developed to minimise water demand**

Water usage is minimised on site due to the nature of the materials handled. Therefore there is no requirement to reduce water usage.

**2.6 PRTR Emission.**

IPR's PRTR emission return is provided in Appendix D.

**3.0 Environmental objectives and targets – 2014.**

No	Objective & Target	Method of Achievement	Responsibility	Timescale	Complete in 2013
1	<b>Assess the Effectiveness of Nuisance Control Procedures</b>	Continually review and assess all nuisance control procedures to ensure minimal impact on surrounding area	Facility Manager	Ongoing	Continuous
		Ensure yards are cleaned at the end of each working day	Operatives	Ongoing	Continuous
2	<b>Prevent Water Pollution from Run-Off</b>	Complete a Firewater Risk Assessment	Facility Manager/ Env Dept	August 2014	Not Complete
		Ensure all gullies are maintained and regularly cleaned	Facility Manager/ Operatives	Ongoing	Continuous
		Pipeline Integrity test to be completed	Facility Manager	July 2014	Not Complete
		Install Class I full retention separator	Facility Manager	Feb 2013	Complete
		A bund integrity test is to be completed.	Facility Manager	August 2013	Complete
3	<b>Assess &amp; Review Resource &amp; Energy Consumption at the site</b>	Carry out an energy audit on the site	Facility Manager	May 2014	Not Complete
4	<b>Maintain and Develop the Environmental</b>	Maintain EMS Documentation on site	Facility Manager/ Env Dept	Continuous	Continuous

	<b>Management System</b>	Up date procedures to reflect operational and control changes	Facility Manager/ Env Dept	Continuous	Continuous
5	<b>Assess Waste Acceptance Procedures so as to minimise volume of erratics</b>	Communicate with customers about the items that are not acceptable in the in-coming wastes	Facility Manager/ Sales Reps	Continuous	Continuous
6	<b>Environmental Monitoring</b>	Implement the Environmental Monitoring Programme specified in the Waste Licence	Facility Manager	Continuous	Continuous
		Investigate any accidents of emission limit values	Facility Manager	Continuous	Continuous
7	<b>Ensure and implement a training programme</b>	Identify staff training requirements and provide relevant training	Facility Manager/ Env Dept	Continuous	Continuous
8	<b>To control any emergencies that may arise at the facility</b>	Review and Update the Emergency Response Procedure	Facility Manager/ Env Dept	Jan 2014	Complete
9	<b>Prepare a Standard Operating Procedures Manual</b>	Update the SOP manual relevant to site operations	Facility Manager/ Env Dept	Continuous	Continuous
10	<b>Ensure lighting in waste handling buildings provide sufficient lighting so as to assess incoming waste</b>	Clean all light fittings in waste handling buildings	Environmental Manager/ Yard Supervisor	May 2014	Not Complete
13	<b>Office Recycling</b>	Implement office recycling	Office Manager/ Environmental Department	Continuous	Continuous
		Continuation of training regarding office recycling	Office Manager/ Environmental Department	Continuous	Continuous
14	<b>Fire Detection</b>	To reduce the risk from fire in the facility – obtain proposals on how to improve current detection system.	Facility Manager	October 2014	Not Complete

### 3.1 Summary of reported incidents and complaints

#### *3.1.1 Reported Incidents Summary*

In 2013 IPR received two non-compliances.

NC000184 – Documentation and Procedures (correct destination has been recorded)

NC000185 – Bunding and Materials Handling ( bunding is now correct)

#### *3.1.2 Complaints:*

No incidents occurred during this licence in 2013.

### 3.2 Review of nuisance controls

#### *3.2.1 Odour*

There is minimal risk of odour nuisance due to the nature of the waste accepted at the facility. However, IPR's in house roadsweeper cleans the concreted yard routinely throughout the day.

#### *3.2.2 Noise*

The monitoring results showed that noise is not a nuisance, as only bobcats, teleporters and forklifts are operational on site.

#### *3.2.3 Dust*

A dust suppression system is installed in the shed and on the external (South-western side) of the building. The roadsweeper is frequently used on all concreted yards. Fire hoses are also available to spray water on concreted yards as required.

#### *3.2.4 Vermin*

A file on vermin control is maintained in the office. A sub-contractor is used to control any vermin on site.

### *3.2.5 Flies*

Good housekeeping practices are used to prevent fly infestations. The yard is kept clean using a road sweeper and all waste for disposal is removed from the facility within 48 hours, or 72 hours in the case of a bank holiday weekends.

### *3.2.6 Birds*

In order to avoid having birds as a nuisance, litter control is practised at all times, this includes regular litter patrols. Birds are not attracted, due to the nature of the material handled on site.

### *3.2.7 Litter*

A designated member of staff carries out litter inspections of the facility regularly and gathers any litter deposited. The yard is kept clean using a road sweeper

## **4.0 Development of Procedures on Site**

The Environmental Management System has been developed and includes the following Standard Operating Procedure;

- Corrective Action;
- Daily Site Inspections;
- Nuisance Management;
- Emergency Response;
- Unacceptable Waste;
- Communications Programme;
- Storage of Fuels and Oils;
- Training and Awareness;
- Environmental Complaints;



A Daily Site Inspection Sheet has been developed to record any potential nuisance on or points to note including a map of the facility for reference as to the location of the nuisance.

### **5.0 Pollution Emission Register**

After consulting the PERL list IPR are not using any substance that is listed at present.

### **6.0 Report on Programme for Public Information**

IPR have a shared website with their sister company Panda. The website was recently re-developed; one of the features is an Environmental page where the following can be downloaded,

- Facility licences (W0140-03, W0261-01, **W0263-01**)
- Multi-regional Waste collection permit (WCP-DC-09-1188-01),
- Environmental Policy,

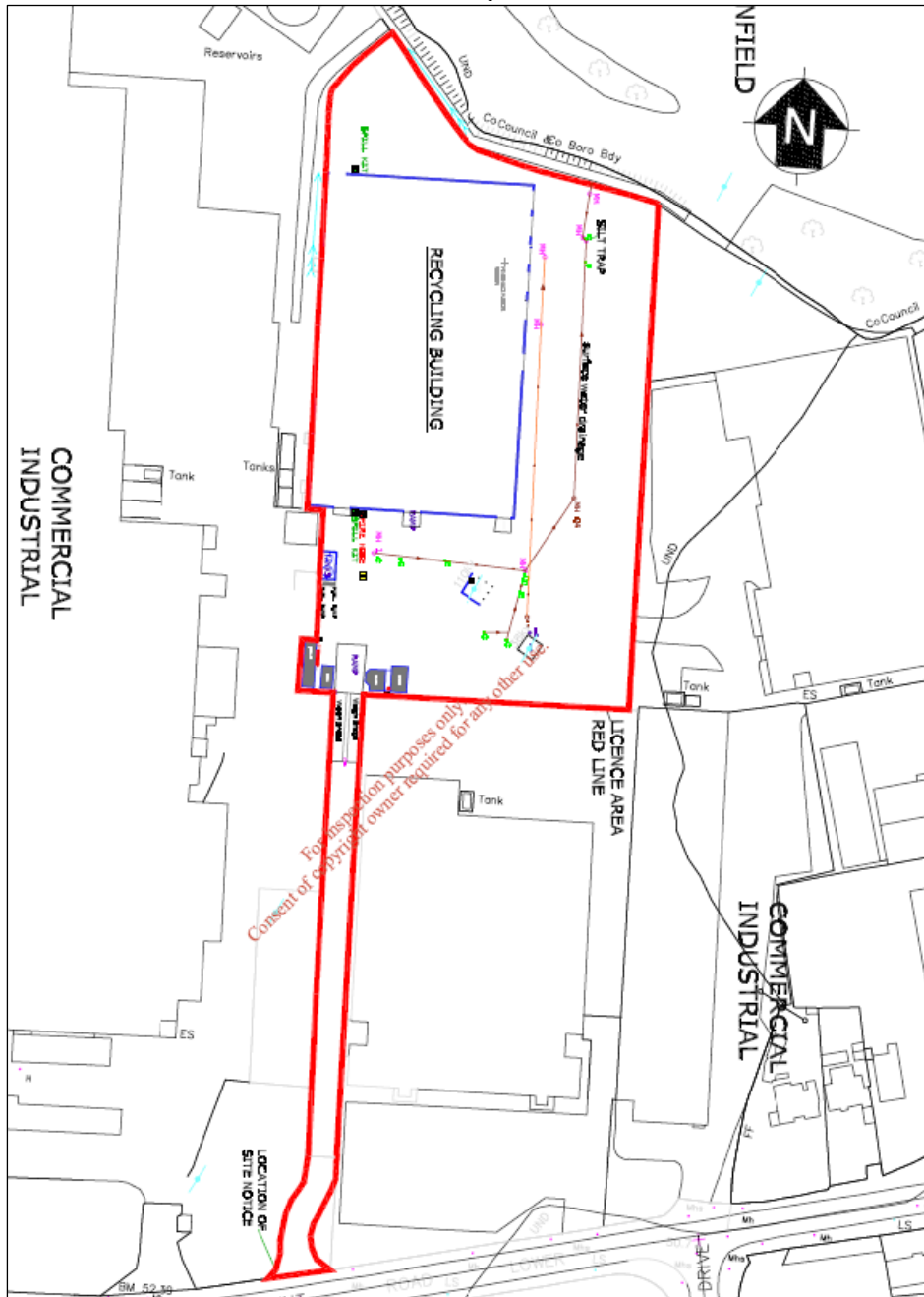
Recycling certificates are issued to customers, on request, so that they can determine their recycling on a monthly basis.

During the reporting period there were no requests from members of the public to inspect any Environmental Records.

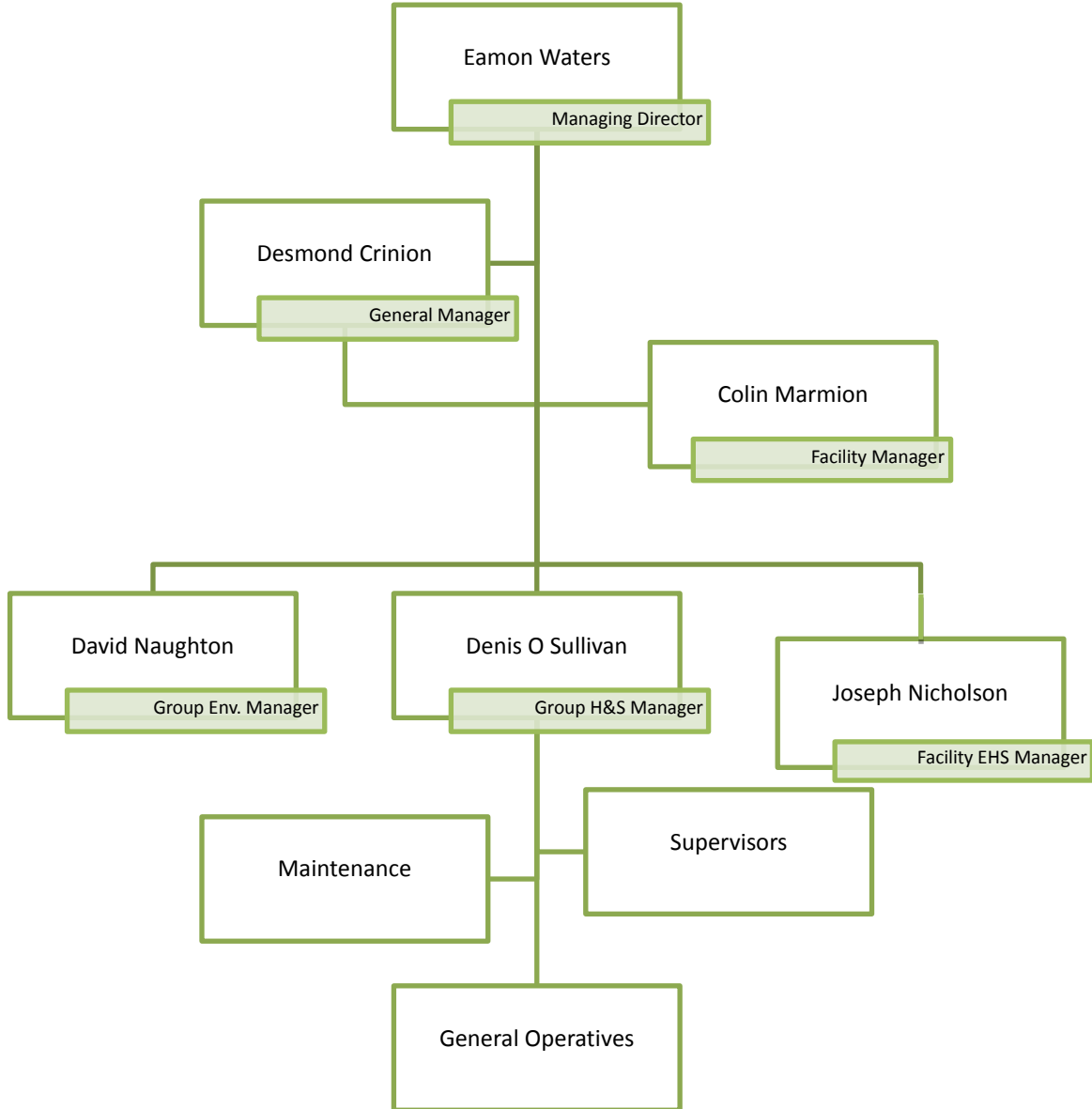
The information in the Annual Environmental Report is true and accurate representation of the activities conducted by IPR in 2013.

# Appendix A

Site Layout



## Appendix B



## Appendix C

### Financial Statement



Our Ref: VL/NMcK

08<sup>th</sup> January 2014

Environmental Protection Agency,  
McCumiskey House,  
Richview,  
Clonskeagh Road,  
Dublin 14.

**Re: Irish Packaging Recycling Limited**

Dear Sir,

We act as Accountants and Taxation Agents for the above and have acted in this capacity in excess of 7 years.

We wish to confirm as follows:

1. Statutory Accounts have been filed for all years up to 31.12.2012 with the Companies Office.

Accounts and Tax Returns have also been filed with Inspector of Taxes for all years to 31<sup>st</sup> December 2012.

2. The Company trades profitably and is on a very sound financial footing.

If you have any queries, please do not hesitate to contact us.

Yours faithfully,

  
FAGAN LYNCH DONNELLAN

Newbridge House, Athlumney, Navan, Co. Meath  
Tel: (046) 9033700 Fax: (046) 9029341 e-mail: info@fld.ie www.fld.ie

John Fagan FCA Vincent Lynch FCA Mark McCartney FCCA

Registered to carry on audit work and authorised to carry on investment business by the Institute of Chartered Accountants in Ireland (ICAI).  
Chartered Accountants Ireland is the operating name of ICAI.



## Appendix D

### PRTR Emissions

| PRTR# : W0263 | Facility Name : Irish Packaging Recycling Limited | Filename : W0263\_2013.xls | Return Year : 2013 |



[Guidance to completing the PRTR workbook](#)

## AER Returns Workbook

Version 1.1.17

<b>REFERENCE YEAR</b>	2013
-----------------------	------

#### 1. FACILITY IDENTIFICATION

Parent Company Name	Irish Packaging Recycling Limited
Facility Name	Irish Packaging Recycling Limited
PRTR Identification Number	W0263
Licence Number	W0263-01

Waste or IPPC Classes of Activity	
<div style="display: flex; align-items: center;"> <span style="margin-right: 5px;">N</span> <span style="border-bottom: 1px solid black; padding: 0 5px;">class_name</span> <span style="margin-left: 5px;">▼</span> </div>	<div style="border: 1px solid black; padding: 2px;">                     Recycling or reclamation of organic substances which are not used as solvents (including composting and other biological transformation processes).                 </div>
4.2	

Address 1	Ballymount Road
Address 2	Walkinstown
Address 3	Dublin 12
Address 4	
	Dublin
Country	Ireland
Coordinates of Location	-6.34193 53.31824
River Basin District	IEEA
NACE Code	3832
Main Economic Activity	Recovery of sorted materials
<b>AER Returns Contact Name</b>	Joseph Nicholson
<b>AER Returns Contact Email Address</b>	joe.nicholson@ipr.ie
<b>AER Returns Contact Position</b>	EHS Manager
<b>AER Returns Contact Telephone Number</b>	01 4602011
<b>AER Returns Contact Mobile Phone Number</b>	086 0226109
<b>AER Returns Contact Fax Number</b>	01 4602210
<b>Production Volume</b>	0.0
<b>Production Volume Units</b>	
<b>Number of Installations</b>	0
<b>Number of Operating Hours in Year</b>	0
<b>Number of Employees</b>	30
<b>User Feedback/Comments</b>	
<b>Web Address</b>	

#### 2. PRTR CLASS ACTIVITIES

<b>Activity Number</b>	<b>Activity Name</b>
50.1	General

#### 3. SOLVENTS REGULATIONS (S.I. No. 543 of 2002)

Is it applicable?	
Have you been granted an exemption ?	
If applicable which activity class applies (as per Schedule 2 of the regulations) ?	
Is the reduction scheme compliance route being used ?	

#### 4. WASTE IMPORTED/ACCEPTED ONTO SITE

[Guidance on waste imported/accepted onto site](#)

Do you import/accept waste onto your site for on-site treatment (either recovery or disposal activities) ?	
--	--

4.1 RELEASES TO AIR

[Link to previous years emissions data](#)

| PRTR# : W0263 | Facility Name : Irish Packaging Recycling Limited | Filename : W0263\_2013.xls | Return Year : 2013 |

26/03/2014 09:36

SECTION A : SECTOR SPECIFIC PRTR POLLUTANTS

RELEASES TO AIR				Please enter all quantities in this section in KGs			
POLLUTANT		METHOD		ADD EMISSION POINT	QUANTITY		
No. Annex II	Name	M/C/E	Method Used	Emission Point 1	T (Total) KG/Year	A (Accidental) KG/Year	F (Fugitive) KG/Year
					0.0	0.0	0.0

ADD NEW ROW | DELETE ROW \* \* Select a row by double-clicking on the Pollutant Name (Column B) then click the delete button

SECTION B : REMAINING PRTR POLLUTANTS

RELEASES TO AIR				Please enter all quantities in this section in KGs			
POLLUTANT		METHOD		ADD EMISSION POINT	QUANTITY		
No. Annex II	Name	M/C/E	Method Used	Emission Point 1	T (Total) KG/Year	A (Accidental) KG/Year	F (Fugitive) KG/Year
					0.0	0.0	0.0

ADD NEW ROW | DELETE ROW \* \* Select a row by double-clicking on the Pollutant Name (Column B) then click the delete button

SECTION C : REMAINING POLLUTANT EMISSIONS (As required in your Licence)

RELEASES TO AIR				Please enter all quantities in this section in KGs					
POLLUTANT		METHOD		ADD EMISSION POINT	QUANTITY			QUANTITY	
Pollutant No.	Name	M/C/E	Method Used	Emission Point 1	DS1	DS2	DS3	T (Total) KG/Year	F (Fugitive) KG/Year
210	Dust	C	ALT Gravimetry	0.04	0.02	0.03	0.09	0.0	0.0

ADD NEW ROW | DELETE ROW \* \* Select a row by double-clicking on the Pollutant Name (Column B) then click the delete button

Additional Data Requested from Landfill operators

For the purposes of the National Inventory on Greenhouse Gases, landfill operators are requested to provide summary data on landfill gas (Methane) flared or utilised on their facilities to accompany the figures for total methane generated. Operators should only report their Net methane (CH4) emission to the environment under T(total) KG/yr for Section A: Sector specific PRTR pollutants above. Please complete the table below:

Landfill:

Irish Packaging Recycling Limited

Please enter summary data on the quantities of methane flared and / or utilised

	T (Total) kg/Year	M/C/E	Method Used		Facility Total Capacity m3 per hour
			Method Code	Designation or Description	
Total estimated methane generation (as per site model)	0.0				N/A
Methane flared	0.0				0.0 (Total Flaring Capacity)
Methane utilised in engine/s	0.0				0.0 (Total Utilising Capacity)
Net methane emission (as reported in Section A above)	0.0				N/A

4.2 RELEASES TO WATERS

[Link to previous years emissions data](#)

PRTR#: W0263 | Facility Name : Irish Packaging Recycling Limited | Filename : W0263\_2013.xls | Return Year : 2013 |

26/03/2014 09:36

SECTION A : SECTOR SPECIFIC PRTR POLLUTANTS

Data on ambient monitoring of storm/surface water or groundwater, conducted as part of your licence requirements, should NOT be submitted under AER / PRTR Reporting as this only concerns Releases from your facility

RELEASES TO WATERS					Please enter all quantities in this section in KGs			
POLLUTANT					ADD EMISSION POINT	QUANTITY		
No. Annex II	Name	M/C/E	Method Used		Emission Point 1	T (Total) KG/Year	A (Accidental) KG/Year	F (Fugitive) KG/Year
		Method Code	Designation or Description					
					0.0	0.0	0.0	0.0

ADD NEW ROW    DELETE ROW \*    \* Select a row by double-clicking on the Pollutant Name (Column B) then click the delete button

SECTION B : REMAINING PRTR POLLUTANTS

RELEASES TO WATERS					Please enter all quantities in this section in KGs			
POLLUTANT					ADD EMISSION POINT	QUANTITY		
No. Annex II	Name	M/C/E	Method Used		Emission Point 1	T (Total) KG/Year	A (Accidental) KG/Year	F (Fugitive) KG/Year
		Method Code	Designation or Description					
					0.0	0.0	0.0	0.0

ADD NEW ROW    DELETE ROW \*    \* Select a row by double-clicking on the Pollutant Name (Column B) then click the delete button

SECTION C : REMAINING POLLUTANT EMISSIONS (as required in your Licence)

RELEASES TO WATERS					Please enter all quantities in this section in KGs			
POLLUTANT					ADD EMISSION POINT	QUANTITY		
Pollutant No.	Name	M/C/E	Method Used		Emission Point 1	T (Total) KG/Year	A (Accidental) KG/Year	F (Fugitive) KG/Year
		Method Code	Designation or Description					
					0.0	0.0	0.0	0.0

ADD NEW ROW    DELETE ROW \*    \* Select a row by double-clicking on the Pollutant Name (Column B) then click the delete button

4.3 RELEASES TO WASTEWATER OR SEWER

[Link to previous years emissions data](#)

| PRTR#: W0263 | Facility Name: Irish Packaging Recycling Limited | Filename: W0263\_2013.xls 26/03/2014 09:36

SECTION A : PRTR POLLUTANTS

OFFSITE TRANSFER OF POLLUTANTS DESTINED FOR WASTE-WATER TREATMENT OR SEWER					Please enter all quantities in this section in KGs			
POLLUTANT		METHOD			ADD EMISSION POINT	QUANTITY		
No. Annex II	Name	M/C/E	Method Used		Emission Point 1	T (Total) KG/Year	A (Accidental) KG/Year	F (Fugitive) KG/Year
			Method Code	Designation or Description				
					0.0	0.0	0.0	0.0
ADD NEW ROW		DELETE ROW *			* Select a row by double-clicking on the Pollutant Name (Column B) then click the delete button			

SECTION B : REMAINING POLLUTANT EMISSIONS (as required in your Licence)

OFFSITE TRANSFER OF POLLUTANTS DESTINED FOR WASTE-WATER TREATMENT OR SEWER					Please enter all quantities in this section in KGs			
POLLUTANT		METHOD			ADD EMISSION POINT	QUANTITY		
Pollutant No.	Name	M/C/E	Method Used		Emission Point 1	T (Total) KG/Year	A (Accidental) KG/Year	F (Fugitive) KG/Year
			Method Code	Designation or Description				
					0.0	0.0	0.0	0.0
ADD NEW ROW		DELETE ROW *			* Select a row by double-clicking on the Pollutant Name (Column B) then click the delete button			



4.4 RELEASES TO LAND

[Link to previous years emissions data](#)

| PRTR#: W0263 | Facility Name : Irish Packaging Recycling Limited | Filename : W0263\_2013.xls | Return Year : 2013 |

26/03/2014 09:36

SECTION A : PRTR POLLUTANTS

RELEASES TO LAND					Please enter all quantities in this section in KGs		
POLLUTANT		METHOD			ADD EMISSION POINT	QUANTITY	
No. Annex II	Name	M/C/E	Method Used		Emission Point 1	T (Total) KG/Year	A (Accidental) KG/Year
			Method Code	Designation or Description			
					0.0	0.0	0.0
ADD NEW ROW	DELETE ROW *	* Select a row by double-clicking on the Pollutant Name (Column B) then click the delete button					

SECTION B : REMAINING POLLUTANT EMISSIONS (as required in your Licence)

RELEASES TO LAND					Please enter all quantities in this section in KGs		
POLLUTANT		METHOD			ADD EMISSION POINT	QUANTITY	
Pollutant No.	Name	M/C/E	Method Used		Emission Point 1	T (Total) KG/Year	A (Accidental) KG/Year
			Method Code	Designation or Description			
					0.0	0.0	0.0
ADD NEW ROW	DELETE ROW *	* Select a row by double-clicking on the Pollutant Name (Column B) then click the delete button					

5. ONSITE TREATMENT & OFFSITE TRANSFERS OF WASTE

| PRTR#: W0263 | Facility Name : Irish Packaging Recycling Limited | Filename: W0263\_2013.xls | Return Year : 2013 |

26/03/2014 09:36

Please enter all quantities on this sheet in Tonnes

58

Transfer Destination	European Waste Code	Hazardous	Quantity (Tonnes per Year)	Description of Waste	Waste Treatment Operation	Method Used		Location of Treatment	Haz Waste : Name and Licence/Permit No of Next Destination Facility Non Haz Waste: Name and Licence/Permit No of Recoverer/Disposer	Haz Waste : Address of Next Destination Facility Non Haz Waste: Address of Recoverer/Disposer	Name and License / Permit No. and Address of Final Recoverer / Disposer (HAZARDOUS WASTE ONLY)	Actual Address of Final Destination i.e. Final Recovery / Disposal Site (HAZARDOUS WASTE ONLY)
						M/C/E	Method Used					
To Other Countries	15 01 01	No	232.3	paper and cardboard packaging	R12	M	Weighed	Abroad	AES,Broker	Cappincur,,Tullamore,Co. Offaly,Ireland 88 Cherrywood Cresent,Clondalkin,Dublin 22,,Ireland Farm Road,Unit 7 Capricorn Centre Cranes,Basildon,SS143JA, United Kingdom 227 Battleford Road,Armagh,Co. Armagh,BT17NN,United Kingdom		
To Other Countries	15 01 01	No	2190.82	paper and cardboard packaging	R12	M	Weighed	Abroad	Agnail Ltd,Broker			
To Other Countries	15 01 01	No	740.46	paper and cardboard packaging	R12	M	Weighed	Abroad	Cycle Link USA,Broker Envirogreen Recycling,WSEX 03/68 & WCP/MH/10/0008-01			
Within the Country	15 01 01	No	13.46	paper and cardboard packaging	R12	M	Weighed	Offsite in Ireland		Flood Recycling,WFP FG-10-0002-01		
Within the Country	15 01 01	No	0.58	paper and cardboard packaging	R12	M	Weighed	Offsite in Ireland				
To Other Countries	15 01 01	No	75.58	paper and cardboard packaging	R12	M	Weighed	Abroad	Highlander International Recycling Ltd,Broker			
To Other Countries	15 01 01	No	9211.55	paper and cardboard packaging	R12	M	Weighed	Abroad	Mark Lyndon Paper Ent Uk Ltd,Broker			
To Other Countries	15 01 01	No	7449.51	paper and cardboard packaging	R12	M	Weighed	Abroad	Marwin Environmental Trading Ltd,Broker			

To Other Countries	15 01 01	No	4019.54	paper and cardboard packaging	R12	M	Weighed	Abroad	MLM Ltd,Broker (On behalf of Midland Waste W0131-02)	Adamson House,Towers Business Park,Wilmlov Rd Didsbury Manchester,M20 2YY,United Kingdom
To Other Countries	15 01 01	No	13822.04	paper and cardboard packaging	R12	M	Weighed	Abroad	MLM Ltd,Broker	Adamson House,Towers Business Park,Wilmlov Rd Didsbury Manchester,M20 2YY,United Kingdom
Within the Country	15 01 01	No	57.02	paper and cardboard packaging	R12	M	Weighed	Offsite in Ireland	DCC MRF - Irish Packaging Recycling,W0238-01	Regional Material Recovery Facility,Merrywell Ind Est Lower Ballymount road,Co. Dublin,Dublin 22,Ireland
Within the Country	15 01 01	No	142.26	paper and cardboard packaging	R12	M	Weighed	Offsite in Ireland	Rebox ,N/a	2B Kylemore Ind Est,Ballyfermot,Dublin 10,,Ireland
To Other Countries	15 01 01	No	12.84	paper and cardboard packaging	R12	M	Weighed	Abroad	Regen Waste Ltd,WCP/MH/09/0014-01	Shepards drive,Carbane Ind Est.,Newry Co. Down,BT356JQ,United Kingdom
To Other Countries	15 01 01	No	13485.86	paper and cardboard packaging	R12	M	Weighed	Abroad	Saica Natur,EPR/KE545IEN/I001	York Street Mill,Audenshaw,Manchester ,M345TN,United Kingdom
To Other Countries	15 01 01	No	16307.58	paper and cardboard packaging	R12	M	Weighed	Abroad	Sca.Emd Recycling,Broker	543 Hythe Lane,Larkfield Aylesford,Kent,M320 7PE,United Kingdom
To Other Countries	15 01 01	No	7328.52	paper and cardboard packaging	R12	M	Weighed	Abroad	Wuxi Longchem Paper Co Ltd,Broker	43 Zhongxing West Rd,Loushe Town,Huishan District Wuxi,Jiangsu,China
To Other Countries	15 01 01	No	4019.82	paper and cardboard packaging	R12	M	Weighed	Abroad	Zhongshan Yongfa Paper Industries Co Ltd,Broker	In Zhongshan Sugar Factory,Huangpu Town,Zhongshan City,,China
To Other Countries	15 01 02	No	110.54	plastic packaging	R12	M	Weighed	Abroad	300 Recycling Ltd,CB/TE5537TS	Canalside,Ellesmere Port,Cheshire,CH654EN,United Kingdom
To Other Countries	15 01 02	No	77.11	plastic packaging	R12	M	Weighed	Abroad	Agnail Ltd,Broker	88 Cherrywood Cresent,Clondalkin,Dublin 22,,Ireland
To Other Countries	15 01 02	No	267.98	plastic packaging	R12	M	Weighed	Abroad	Agnail Ltd,Broker	88 Cherrywood Cresent,Clondalkin,Dublin 22,,Ireland
To Other Countries	15 01 02	No	18.68	plastic packaging	R12	M	Weighed	Abroad	Agnail Ltd,Broker	88 Cherrywood Cresent,Clondalkin,Dublin 22,,Ireland
To Other Countries	15 01 02	No	26.04	plastic packaging	R12	M	Weighed	Abroad	Agnail Ltd,Broker	88 Cherrywood Cresent,Clondalkin,Dublin 22,,Ireland

Within the Country	1 02	No	79.71 plastic packaging	R12	M	Weighed	Offsite in Ireland	ROC Recycling Ltd,WFP-LS-11-0001-01	Ballymacken Ind Est,Ballymacken ,Portlaoise,Co. Laois,Ireland Suite 5,30 Lancaster Gate,London,W2
To Other Countries	15 01 02	No	50.44 plastic packaging	R12	M	Weighed	Abroad	Asia Global Trade,Broker	3LP,United Kingdom Cynar House,Clonminam Ind Est,Portlaoise,Co. Laois,Ireland
Within the Country	15 01 02	No	29.82 plastic packaging	R12	M	Weighed	Offsite in Ireland	Cynar Recycling Ltd,WFP-LS-09-0005-01	227 Battleford Road,Armagh,Co. Armagh,BT717NN,United Kingdom
Within the Country	15 01 02	No	162.28 plastic packaging	R12	M	Weighed	Offsite in Ireland	Envirogreen Recycling,WMEX 03/68 & WCP/MH/10/0008-01	11 Triangle South,Clifton,Bristol,UKBS8
To Other Countries	15 01 02	No	45.1 plastic packaging	R12	M	Weighed	Abroad	Failand Paper Services Ltd.,Broker	1EY,United Kingdom Ballylynch,Carrick on Suir,Tipperary,,Ireland
Within the Country	15 01 02	No	128.22 plastic packaging	R12	M	Weighed	Offsite in Ireland	Filmco Ltd,WFP--TS-10-1003-01	17a Oaktree Business Park,Trim,Co. Meath,,Ireland
Within the Country	15 01 02	No	6.76 plastic packaging	R12	M	Weighed	Offsite in Ireland	Food Surplus Management,ID9	Shamrock Place,North Strand,Dublin 1,,Ireland
Within the Country	15 01 02	No	2.86 plastic packaging	R12	M	Weighed	Offsite in Ireland	Leech Papers,WFP-DC-10-0017-01	
To Other Countries	15 01 02	No	634.76 plastic packaging	R12	M	Weighed	Abroad	Leinster Environmental,Broker	Dundalk,Co. Louth,,Ireland
Within the Country	15 01 02	No	266.92 plastic packaging	R12	M	Weighed	Offsite in Ireland	Leinster Environmental,Wp 2004/03	Dundalk,Co. Louth,,Ireland
Within the Country	15 01 02	No	0.04 plastic packaging	R12	M	Weighed	Offsite in Ireland	Mantlet Ltd,WCP-DC-10-1294-01	20 Oakley Grove,Blackrock,Co. Dublin,,Ireland
To Other Countries	15 01 02	No	96.26 plastic packaging	R12	M	Weighed	Abroad	Materia Environment Ltd.,Broker	Kipper House,Scilly,Kinsale,Co. Cork,Ireland
To Other Countries	15 01 02	No	966.28 plastic packaging	R12	M	Weighed	Abroad	MLM Ltd,Broker	Adamson House,Towers Business Park,Wilmlov Rd Didsbury Manchester,M20 2YY,United Kingdom
To Other Countries	15 01 02	No	259.5 plastic packaging	R12	M	Weighed	Abroad	Monoworld Ltd,EAWML75205	Rushden Road,Sharnbrook,Bedfordshire,MK44IND,United Kingdom

To Other Countries	1 02	No	498.36 plastic packaging	R12	M	Weighed	Abroad	Oxigen Environmental Ltd,Broker	Merrywell Industrial Estate,Ballymountb road lower,Dublin 22,,Ireland B.E.A.T Centre,Stephenstown Industrial
To Other Countries	15 01 02	No	13.84 plastic packaging	R12	M	Weighed	Abroad	Pac On Waste & Recycling Ltd,Broker	Estate,Balbriggan,Co. Dublin,Ireland
To Other Countries	15 01 02	No	961.64 plastic packaging	R12	M	Weighed	Abroad	Peute Recycling BV,Broker	Baanhoekweg 4,3313 La Dordrecht,,Netherlands 88 Cherrywood
Within the Country	15 01 02	No	3.18 plastic packaging	R12	M	Weighed	Offsite in Ireland	Polymer Recovery ,Wfp-ww-12-0030-01	Cresent,Clondalkin,Dublin 22,,Ireland
To Other Countries	15 01 02	No	76.42 plastic packaging	R12	M	Weighed	Abroad	Tianjin Longtime International,Mill	Add room 8 2 101 milan century garden,81 Dongting road,teda Tianjin,,China
To Other Countries	15 01 02	No	252.34 plastic packaging	R12	M	Weighed	Abroad	Tianjin Yunxiang Toning Metal Product Co,Mill	Room 102 Haijing Building,No 197 Haibin Fifteen Road,TPFTS,,China Unit 807 8/F
To Other Countries	15 01 02	No	910.44 plastic packaging	R12	M	Weighed	Abroad	Vanden Global Ltd,Broker	Mackennycentre,660 Castel Peak road,Kowloon,,Hong Kong
Within the Country	15 01 02	No	30.56 plastic packaging	R12	M	Weighed	Offsite in Ireland	Wicklow Recycling,Broker	Willow Mount,Killpoole Hill,Wicklow Town,Co.Wicklow,Ireland
To Other Countries	15 01 02	No	1870.62 plastic packaging	R12	M	Weighed	Abroad	WRC Recycling,Broker	Auchans Farm,Johnstone,Renfrewshire,PA6 7EE,United Kingdom 13 The
To Other Countries	15 01 02	No	334.8 plastic packaging	R12	M	Weighed	Abroad	ZS Green Environmental Solutions Ltd,Broker	Willows,Fotarock,Carrigtwohill,Co. Cork,Ireland
Within the Country	15 01 03	No	100.7 wooden packaging	R12	M	Weighed	Offsite in Ireland	Conroy Recycling,WP-04/2002	Kildallon,Mullingar,Co. Westmeath,,Ireland 11 Triangle
Within the Country	15 01 03	No	63.66 wooden packaging	R12	M	Weighed	Offsite in Ireland	Failand Paper Services Ltd.,Broker	South,Clifton,Bristol,UKBS8 1EY,United Kingdom

Within the Country	1 03	No	788.89 wooden packaging	R12	M	Weighed	Offsite in Ireland	TD Freight Ltd,Broker	Tullycara, Castleblaney, Co. Monaghan, Ireland 227 Battleford Road, Armagh, Co. Armagh, BT17 1NN, United Kingdom
Within the Country	15 01 04	No	0.448 metallic packaging	R12	M	Weighed	Offsite in Ireland	Envirogreen Recycling, WMEX 03/68 & WCP/MH/10/0008-01	
Within the Country	15 01 04	No	47.14 metallic packaging	R12	M	Weighed	Offsite in Ireland	Wilton Waste Recycling Ltd, WFP CN-10-000-5-01(1)	Kiffa, Crosserlough, Ballyjam esduff, Co. Cavan, Ireland 88 Cherrywood Crescent, Clondalkin, Dublin 22, Ireland
To Other Countries	16 01 03	No	179.06 end-of-life tyres	R12	M	Weighed	Abroad	Agnail Ltd, Broker	88 Cherrywood Crescent, Clondalkin, Dublin 22, Ireland
To Other Countries	19 12 01	No	1196.14 paper and cardboard	R12	M	Weighed	Abroad	Agnail Ltd, Broker	88 Cherrywood Crescent, Clondalkin, Dublin 22, Ireland
<b>To Other Countries</b>	<b>19 12 01</b>	<b>No</b>	<b>134.24 paper and cardboard</b>	<b>R12</b>	<b>M</b>	<b>Weighed</b>	<b>Abroad</b>	<b>Agnail Ltd, Broker</b>	<b>88 Cherrywood Crescent, Clondalkin, Dublin 22, Ireland</b>
To Other Countries	19 12 01	No	177.08 paper and cardboard	R12	M	Weighed	Abroad	Agnail Ltd, Broker	88 Cherrywood Crescent, Clondalkin, Dublin 22, Ireland
Within the Country	19 12 01	No	5.3 paper and cardboard	R12	M	Weighed	Offsite in Ireland	ROC Recycling Ltd, WFP-LS-11-0001-01	Ballymacken Ind Est, Ballymacken, Portlaoise, Co. Laois, Ireland Underwood House Mill Lane, Ashley
To Other Countries	19 12 01	No	48.88 paper and cardboard	R12	M	Weighed	Abroad	Ashley Paper Sales Ltd, Broker	Alittrincham, Cheshire, WA15 ORD, United Kingdom 47 Swaffham Road, Burwell, Cambridgeshire, CB25 0AN, United Kingdom
To Other Countries	19 12 01	No	51.42 paper and cardboard	R12	M	Weighed	Abroad	Boost Recycling Ltd, Broker	13 Roebuck Road, Rochester, Kent, ME1 1UE, United Kingdom
To Other Countries	19 12 01	No	51.08 paper and cardboard	R12	M	Weighed	Abroad	CP Paper Consultancy, Broker	227 Battleford Road, Armagh, Co. Armagh, BT17 1NN, United Kingdom
Within the Country	19 12 01	No	7.612 paper and cardboard	R12	M	Weighed	Offsite in Ireland	Envirogreen Recycling, WMEX 03/68 & WCP/MH/10/0008-01	11 Triangle South, Clifton, Bristol, UKBS8 1EY, United Kingdom
To Other Countries	19 12 01	No	973.84 paper and cardboard	R12	M	Weighed	Abroad	Failand Paper Services Ltd., Broker	Tithe Barn, Bradbourne Stables Bradbourne House, East Malling Kent, ME19 6D2, United Kingdom
To Other Countries	19 12 01	No	1786.68 paper and cardboard	R12	M	Weighed	Abroad	Harmon Internation, Broker	

To Other Countries	19 12 01	No	458.5 paper and cardboard	R12	M	Weighed	Abroad	Highlander International Recycling Ltd,Broker	Linewood Ave,East Kilbride,Glasgow,G74 5NE,United Kingdom
Within the Country	19 12 01	No	10.87 paper and cardboard	R12	M	Weighed	Offsite in Ireland	Leech Papers,WFP-DC-10-0017-01	Shamrock Place,North Strand,Dublin 1,,Ireland
To Other Countries	19 12 01	No	104.6 paper and cardboard	R12	M	Weighed	Abroad	Marwin Environmental Trading Ltd,Broker	7 Glyntown Heights,Glanmire,Co. Cork,,Ireland
To Other Countries	19 12 01	No	1487.4 paper and cardboard	R12	M	Weighed	Abroad	MLM Ltd,Broker	Adamson House,Towers Business Park,Wilmlov Rd Didsbury Manchester,M20 2YY,United Kingdom
To Other Countries	19 12 01	No	1718.23 paper and cardboard	R12	M	Weighed	Abroad	Northwood Recycling Limited,Broker	Grant House,Stafford Park 12,Telford,TF33BJ,United Kingdom
To Other Countries	19 12 01	No	172.44 paper and cardboard	R12	M	Weighed	Abroad	Palm Recycling Ltd,Mill	Saddlebow Paper Mill,Poplar Avenue Kings Lynn,Norfolk,PE34 3AL,United Kingdom
To Other Countries	19 12 01	No	193.85 paper and cardboard	R12	M	Weighed	Abroad	Paperman Products,WMX19/41	Rathdown Cl Lissue Ind Est ,Moira Road, Lisburn Co Antrim,BT28 2RB,United Kingdom
To Other Countries	19 12 01	No	47.06 paper and cardboard	R12	M	Weighed	Abroad	Peute Papier Recycling BV,Broker	Baanhoekweg 4,3313 La Dordrecht,,Netherlands
To Other Countries	19 12 01	No	2695.95 paper and cardboard	R12	M	Weighed	Abroad	Saica Natur,EPR/KE545IEN/I001	York Street Mill,Audenshaw,Manchester ,M345TN,United Kingdom
To Other Countries	19 12 01	No	10736.3 paper and cardboard	R12	M	Weighed	Abroad	Sca.Emd Recycling,Broker	543 Hythe Lane,Larkfield Aylesford,Kent,M320 7PE,United Kingdom
To Other Countries	19 12 01	No	2799.44 paper and cardboard	R12	M	Weighed	Abroad	Sca.Emd Recycling,Broker/mill	543 Hythe Lane,Larkfield Aylesford,Kent,M320 7PE,United Kingdom
To Other Countries	19 12 01	No	5577.82 paper and cardboard	R12	M	Weighed	Abroad	Marwin environmental Trading & Hamon International Ltd (on behalf of Smurfit),Broker	Ballytmount rd,,Walkinstown,Dublin 12,Ireland

Within the Country	12 12	No	232.0	other wastes (including mixtures of materials) from mechanical treatment of wastes other than those mentioned in 19 12 11	R12	M	Weighed	Offsite in Ireland	Panda Waste Services,W0140-03	Beauparc Business Park,Navan,,Co. Meath,Ireland
Within the Country	19 12 12	No	219.42	other wastes (including mixtures of materials) from mechanical treatment of wastes other than those mentioned in 19 12 11	R12	M	Weighed	Offsite in Ireland	Panda Waste Services,W0039-02	Ballymount Cross,Tallaght,Dublin 24,,Ireland
Within the Country	20 01 36	No	4.38	discarded electrical and electronic equipment other than those mentioned in 20 01 21, 20 01 23 and 20 01 35	R12	M	Weighed	Offsite in Ireland	KMK Metals Recycling Ltd.,WCP-OY-0607-01	Cappincur Ind Est.,Daingean Rd.,Tullamore,Co. Offaly,Ireland
Within the Country	20 01 39	No	3.82	plastics	R12	M	Weighed	Offsite in Ireland	ROC Recycling Ltd,WFP-LS-11-0001-01	Ballymacken Ind Est,Ballymacken ,Portlaoise,Co. Laois,Ireland
To Other Countries	20 01 39	No	2.36	plastics	R12	M	Weighed	Abroad	Agnail Ltd,Broker	88 Cherrywood Cresent,Clondalkin,Dublin 22,,Ireland
Within the Country	20 01 39	No	34.38	plastics	R12	M	Weighed	Offsite in Ireland	Envirogreen Recycling,WMEX 03/68 & WCP/MH/10/0008-01	227 Battleford Road,Armagh,Co. Armagh,BT171NN,United Kingdom
Within the Country	20 01 39	No	209.91	plastics	R12	M	Weighed	Offsite in Ireland	Leinster Environmental,Wp 2004/03	Dundalk,Co. Louth,,Ireland
To Other Countries	20 01 39	No	10.5	plastics	R12	M	Weighed	Abroad	Midland Waste,Broker	Proudstown Road,Navan,Co. Meath,,Ireland
Within the Country	20 01 39	No	5.36	plastics	R12	M	Weighed	Offsite in Ireland	Polymer Recovery ,Wfp-ww-12-0030-01	88 Cherrywood Cresent,Clondalkin,Dublin 22,,Ireland
Within the Country	20 01 39	No	5.4	plastics	R12	M	Weighed	Offsite in Ireland	Wicklow Recycling,Broker	Willow Mount,Killpoole Hill,Wicklow Town,Co.Wicklow,Ireland
To Other Countries	20 01 39	No	30.22	plastics	R12	M	Weighed	Abroad	WRC Recycling,Broker	Auchans Farm,Johnstone,Renfrewshire,PA6 7EE,United Kingdom
Within the Country	20 03 01	No	17.78	mixed municipal waste	R12	M	Weighed	Offsite in Ireland	ROC Recycling Ltd,WFP-LS-11-0001-01	Ballymacken Ind Est,Ballymacken ,Portlaoise,Co. Laois,Ireland



Within the Country	20 03 01	No	39.02 mixed municipal waste	R12	M	Weighed	Offsite in Ireland	Colm McDowell & Associates ,Broker	96 St.Patrick street,Dun Laoghaire,Co.Dublin,,Ireland
Within the Country	20 03 01	No	0.22 mixed municipal waste	R12	M	Weighed	Offsite in Ireland	Envirogreen Recycling,W/MEX 03/68 & WCP/MH/10/0008-01	227 Battleford Road,Armagh,Co. Armagh,BT717NN,United Kingdom
Within the Country	20 03 01	No	124.9 mixed municipal waste	R12	M	Weighed	Offsite in Ireland	Greyhound,W0205-01	Crag Avenue,Clondalkin,Dublin 22,,Ireland
Within the Country	20 03 01	No	0.54 mixed municipal waste	R12	M	Weighed	Offsite in Ireland	Irish Lamp Recycling co Ltd.,WCP-DC-08-1115-01	Woodstock Ind Est.,Killkenny Road,Arthy,Co . Kildare,Ireland
Within the Country	20 03 01	No	2.0 mixed municipal waste	R12	M	Weighed	Offsite in Ireland	Leech Papers,WFP-DC-10-0017-01	Shamrock Place,North Strand,Dublin 1,,Ireland
Within the Country	20 03 01	No	9.68 mixed municipal waste	R12	M	Weighed	Offsite in Ireland	Midland Waste,W131-02	Proudstown Road,Navan,Co. Meath,,Ireland
Within the Country	20 03 01	No	5.98 mixed municipal waste	R12	M	Weighed	Offsite in Ireland	SDCC Bailing Station Panda,W0003-01	Ballymount Bailing Station,Ballymount road,Walkinstown,Dublin 12,Ireland
Within the Country	20 03 01	No	25.99 mixed municipal waste	R12	M	Weighed	Offsite in Ireland	Panda Waste Services,W0140-03	Beauparc Business Park,Navan,,Co. Meath,Ireland
Within the Country	20 03 01	No	984.695 mixed municipal waste	R12	M	Weighed	Offsite in Ireland	Panda Waste Services,W0039-02	Ballymount Cross,Tallaght,Dublin 24,,Ireland
Within the Country	20 03 01	No	6.72 mixed municipal waste	R12	M	Weighed	Offsite in Ireland	Rehab Recycle Ltd,WFP-DS10-0008-03	Unit 77 Broomhill Road,Tallaght,Dublin 24,,Ireland
Within the Country	15 01 02	No	80.08 plastic packaging	R12	M	Weighed	Offsite in Ireland	DCC MRF - Irish Packaging Recycling,W0238-01	Regional Material Recovery Facility,Merrywell Ind Est Lower Ballymount road,Co. Dublin,Dublin 22,Ireland
Within the Country	15 01 04	No	8.2 metallic packaging	R12	M	Weighed	Offsite in Ireland	DCC MRF - Irish Packaging Recycling,W0238-01	Regional Material Recovery Facility,Merrywell Ind Est Lower Ballymount road,Co. Dublin,Dublin 22,Ireland