



*Site: Merrywell Industrial Estate,
Ballymount Road Lower,
Ballymount, Dublin 22.*

Waste Licence Number W0238-01

Annual Environmental Report

01st January 2013 – 31st December 2013

Table of Contents

Table of Contents	2
1.1 Company Details	4
1.2 Management Structure.....	5
1.3 Financial Provision.....	5
1.4 Environmental Policy	5
1.5 Activities	6
1.6 Water Usage	7
2.1 Waste Received	7
2.2 Waste Transferred Off-Site for Disposal or Recovery	7
2.3 waste recovery reports	8
2.4 Summary report on emissions and interpretation of environmental monitoring	8
2.4.1 Storm Water Emissions	8
2.4.2 Noise Emissions	9
2.4.3 Tank and Pipeline Testing and Inspection Report.	11
2.4.4 Summary of Resource and Energy Consumption	11
2.4.5 Water.....	11
2.5 Site Infrastructure	11
2.5.1 In – place.....	11
2.6 Progress report on proposals developed to minimise water demand.....	13
2.7 PRTR Emission.	13
3.1 Summary of Reported Incidents and Complaints.....	18
3.1.1 Reported Incidents Summary.....	18
3.1.2 Complaints.....	18
3.2 Review of Nuisance Controls	18
3.2.1 Odour.....	18
3.2.2 Noise	18
3.2.3 Vermin	19
3.2.4 Flies.....	19
3.2.5 Birds.....	19

3.2.6 Litter	19
4.0 Development of Procedures on Site.....	19
5.0 Pollution Emission Register	20
6.0 Report on Programme for Public Information	20
Appendix A	21
Appendix B.....	22
Appendix C.....	23
Appendix D	24

1.0 Introduction

Irish Packaging Recycling Ltd. operate Waste Licence W0238-01 on behalf of Dublin City Council.

The following Annual Environmental Report was prepared in accordance with Condition 11.8 and Schedule E of Waste Licence W0238-01, and with reference to Environmental Protection Agency guidance on Annual Environmental Reporting. This AER relates to the calendar year 2013. The report provides details of the activities carried out at the facility from the 01st of January 2013 to the 31st December 2013.

1.1 Company Details

Licence No:	W0238-01
Name:	Irish Packaging Recycling Ltd.
Address:	Ballymount Road, Walkinstown, Dublin 12.
Telephone Number:	01 4602011
Fax Number:	01 4602210
Website:	www.panda.ie

1.2 Management Structure

There are 80 employees either working directly or indirectly at the facility. Appendix B illustrates the organisational structure of the facility.

1.3 Financial Provision

A statement from our accountants is provided in Appendix C. At the present time the annual turnover and company assets are sufficient to offset environmental liabilities incurred during the course of operations and in the event that the company is closed.

1.4 Environmental Policy

In carrying out our function, IPR/Panda acknowledge that our activities impact upon the environment both through routine internal operations and the actions of our staff.

It is Panda's policy to protect the environment during all activities, both on and off-site.

This is achieved by:

- Strategic preparation and implementation of operating procedures (including an emergency response procedure).
- Utilizing BAT (Best Available Technology).
- Actively promoting environmental awareness amongst staff and clients through appropriate training and communication programs.
- Reduce energy use through effective education and awareness and the installation of energy efficient technology where appropriate.
- Implementing a policy of continuous improvement, by means of targeted objectives. All objectives and targets are monitored and up-dated accordingly.

IPR/Panda are committed to complying with all relevant environmental regulations and aim to supply a safe competitive and sustainable service with specific regards to the surrounding environment.

1.5 Activities

Irish Packaging Recycling Ltd commenced operation of the Regional Materials Recovery Facility on behalf of the four Dublin Local Authorities under Waste Licence W0238-01 in January 2012. This licence allows Irish Packaging Recycling Ltd. to carry out the following waste handling activities as permitted under the Third and Fourth Schedules of the Waste Management Act 1996 to 2003:

- Class 12 and 13 Waste Disposal Activities, in accordance with the Third Schedule of the Waste Management Act, 1996.

Third Schedule, Class 12: Repackaging prior to submission to any activity referred to in a preceding paragraph of this Schedule.

Third Schedule, Class 13: Storage prior to submission referred to in a preceding paragraph of this Schedule, other than temporary storage, pending collection, on the premises where the waste concerned is produced.

- Class 2, 3, 4 and 13 Waste Recovery Activities, in accordance with the Fourth Schedule of the Waste Management Act, 1996.

Forth Schedule, Class 2: Recycling or reclamation of organic substances which are not used as solvents (including composting and other biological transformation processes). Principle activity.

Forth Schedule, Class 3: Recycling or reclamation of metal and metal compounds.

Forth Schedule, Class 4: Recycling or reclamation of other inorganic materials

Forth Schedule, Class 13: Storage of waste intended for submission to any activity referred to in a preceding paragraph of this Schedule, other than temporary storage, pending collection, on the premises where the waste concerned is produced.

Irish Packaging Recycling Ltd accepts household dry recyclable materials that have been collected in a single co-mingled waste stream from kerbside collections to the Regional Materials Recovery Facility. The materials accepted include paper, newspapers, magazines, cardboard, aluminium cans, steel cans, tetrapak beverage cartons, plastic bottles including PET, HDPE, PVC containers and plastic film. All materials collected and processed at the Regional MRF come from the Dublin Region.

Irish Packaging Recycling Ltd also accepts small quantities of commercial dry recyclable materials to the Regional Materials Recovery Facility. The materials accepted include paper, cardboard, aluminium and steel cans, and mixed plastics.

1.6 Water Usage

Water for fire sprinkler system is taken from a holding tank located on the facility. Water to office and amenities is taken from a municipal supply and is metered by the council.

2.0 Summary Information

2.1 Waste Received

The waste received at the facility from the 01st January 2013 to the 31st December 2013 was 70,984.181 tonnes.

TABLE 1: Waste received in 2013

EWC code	Waste Description	Tonnage
20 03 01	Mixed Dry Recyclables	70,799.821
15 01 01	Paper & Cardboard	37.9
15 01 02	Plastic Packaging	83.26
15 01 04	Metal Packaging	52.8
15 01 07	Glass	10.4

2.2 Waste Transferred Off-Site for Disposal or Recovery

See Appendix D for the breakdown of the different destinations used for the waste removed off site by EWC code.

2.3 waste recovery reports

TABLE 2: Outgoing destination and recovery rate.

Destination	Tonnage	%
Disposal	0	0
Recovery	68,973.02	100

2.4 Summary report on emissions and interpretation of environmental monitoring

Under condition 6 and Schedule C of the licence W0238-01, IPR are required to monitor storm water emissions and noise. The following sub-headings detail the results from independent laboratories of the different parameters and the emission limit values ELV's set by the EPA and any complaints and incident that may have occurred during the year.

2.4.1 Storm Water Emissions

TABLE 3: Quarterly Samples.

Quarter 1:

Test Parameter	SOP	Analytical Technique	Result	Units
COD (surface water)	107	Colorimetry	<5	mg/L
pH (surface water)	110	Electrometry	7.7	pH Units
Solids (total suspended)	106	Filtration / Drying @ 104C	<2	mg/L

Quarter 2:

Test Parameter	SOP	Analytical Technique	Result	Units
COD (surface water)	107	Colorimetry	14	mg/L
pH (surface water)	110	Electrometry	7.7	pH Units
Solids (total suspended)	106	Filtration / Drying @ 104C	10	mg/L

Quarter 3:

Test Parameter	SOP	Analytical Technique	Result	Units
COD (Industrial Eff.)	107	Colorimetry	7	mg/L
pH (Industrial Eff.)	110	Electrometry	7.8	pH Units
Suspended Solids (Industrial Eff.)	106	Filtration / Drying @ 104C	5	mg/L

Quarter 4:

Test Parameter	SOP	Analytical Technique	Result	Units
COD (surface water)	107	Colorimetry	<5	mg/L
pH (surface water)	110	Electrometry	8.1	pH Units
Solids (total suspended)	106	Gravimetry	2	mg/L

2.4.2 Noise Emissions

Noise emissions are monitored according to Schedule B.4 and Condition 6.15 of the licence. An independent competent consultant was commissioned to conduct the noise sampling for the facility. Table 4 details results of noise monitoring conducted in 2013.

TABLE 4: Noise Emissions 2013

Recorded day-time noise levels dB(A) -30 minute intervals

Location id (Time)	Leq	L10	L90	Comments
N1 (15.00)	58.9	60.4	56.5	Adjacent site dominant contributing factor to noise levels. Lmin of 54.7dB
N2 (15.12)	60.9	62.3	59.1	Road traffic noise dominant contributing factor to noise levels
N3 (15.38)	60.5	61.8	58.8	Road traffic noise dominant contributing factor to noise levels
N4 (15.52)	60.5	62.5	58.3	Adjacent site dominant contributing factor to noise levels
N5 (16.16) NSL1	54.6	56.8	48.5	Road traffic noise with waste facility in-audible at less than 48dBA

Recorded night-time noise levels dB(A) -30 minute intervals

Location id	Leq	L10	L90	Comments
N1 (22.16)	53.9	53.3	50.1	Adjacent site dominant contributing factor to noise levels
N2 (22.22)	52.6	53.5	48.5	Road traffic noise dominant contributing factor to noise levels
N3 (22.53)	55.1	55.8	49.9	Road traffic noise dominant contributing factor to noise levels
N4 (22.48)	56.1	57.1	50.4	Adjacent site dominant contributing factor to noise levels
N5 (23.33) NSL1	52.8	54.2	48.7	Road traffic noise dominant with waste facility in-audible at Lmin of than 46.2dBA

2.4.3 Tank and Pipeline Testing and Inspection Report.

Siac Construction Ltd. carried out all pipeline integrity testing in December 2008. The pipes will be scheduled for integrity testing in 2014.

2.4.4 Summary of Resource and Energy Consumption

Table 5: Summary of Resource and Energy Consumption from 01st January 2013 to December 2013.

Raw Material/Resource	Application	Consumption
Electricity	Office and plant use	2399212 KWhr
Marked Diesel	Mobile plant machinery	80.963 Litres

2.4.5 Water

Water for fire sprinkler system is taken from a holding tank located on the facility. Water to office and amenities is taken from a municipal supply and is metered by the council.

2.5 Site Infrastructure

2.5.1 In – place

The current site infrastructure is outlined below (List 1). List 2 details the waste processing equipment used on site.

List 1: Current site infrastructure

1. Offices
2. Dual Weighbridge.
3. One x Waste processing building
4. One sprinkling system
5. Canteen & toilets.
6. Maintenance Workshop
7. Fencing around the site
8. ESB sub station

List 2: Waste processing equipment

- 1 x Shovel
- 3 x Forklifts
- 1 x Roadsweeper
- 1 x Teleporter
- 1 x Hook Loader
- 2 x OCC Screens
- 6 x Nerwscreens
- 1 x Eddy Current
- 2 x Multi Wave
- 1 x Fibre sort
- 1 x Perforator
- 2 x Magnets
- 3 x Aladdin
- 4 x Walking Floor Bunkers
- 1 x Single Ram Baler
- 1 x Twin Ram Baler

2 x Manual Balers

There is sufficient back up within the group if the shovel, forklifts, hook loader or the teleporter break down.

2.6 Progress report on proposals developed to minimise water demand

Water usage is minimised on site due to the nature of the materials handled. Therefore there is no requirement to reduce water usage.

2.7 PRTR Emission.

IPR's PRTR emission return is provided in Appendix D.

3.0 ENVIRONMENTAL OBJECTIVES AND TARGETS.

REVIEW OF ENVIRONMENTAL OBJECTIVES AND TARGETS 2013

No.	Aspects	Objective & Target	Method of Achievement	Responsibility of	Status
1	Waste Management	Ensure the most efficient and environmentally sustainable management of material entering the MRF	Promote Recycling in-house within the MRF site offices	EHS Manager /Facility Manager	On-going
			Carry out waste characterisation surveys monthly – to include quarterly residual waste characterisation survey	EHS Manager	On-going
2	Compliance with the facility Waste Licence	Operate the facility in accordance with the Conditions of the Waste Licence and promote continual environmental improvement	Review training schedule of each staff member and identify training needs.	EHS Manager	On going
			Continue programme of regular inspections to include storm water sampling.	EHS Manager	On-going
			Continue to maintain the appropriate records at the facility in accordance with Condition 11 of the facility Waste Licence	EHS Manager	On-going
3	Water/Oil	Prevent surface water contamination	Ensure all gullies are fitted with wire mesh.	EHS Manager	Complete
			Pipe & Bund integrity test conducted.	EHS Manager	Complete
			Ensure all gullies are maintained and regularly cleaned	EHS Manager	On-going
			Increase frequency of visit of roadsweeper from once per day to twice per week day.	EHS Manager /Facility Manager	Complete

4	Traffic Management	Achieve organised, efficient and safe movement of cars, trucks and machinery on site minimising noise and emissions	Review site traffic management plan.	H&S Manger	Complete
5	Resource Use and Energy Efficiency	Identify opportunities for energy use reduction and efficiency.	Identify where energy savings can be made.	EHS Manager	On-going
			Installation of non-concussive push button taps so as to reduce wastage.	EHS Manager /Facility Manager	Complete
6	Public Relations	Minimisation of Complaints	Effectively deal with complaints	EHS Manager	On-going
			Maintain a high standard of housekeeping practises at the facility to minimise the number of complaints.	EHS Manager	On-going
7	Emergencies	To control any emergency that may arise in the facility.	Review emergency response procedure and train all personnel.	EHS Manager	Complete
8	Material quality	Ensure all containers leaving the site have been loaded accordingly and that the material therein conforms to specified quality standards.	Retrain forklift drivers on appropriate picture taking as per TFS Regulations.	Facility Manager	Complete
			Install additional picking platforms to remove plastic film from the mixed paper line.	Facility Manager	Complete

Environmental Objectives and Targets for 2014

No	Aspects	Objective & Target	Method of achievement	Responsibility	Due
1	Waste Management	Ensure the most efficient and environmentally sustainable management of material entering the MRF	Promote Recycling in-house within the MRF site offices	EHS Manager /Facility Manager	On-going
2	Compliance with the facility Waste Licence	Operate the facility in accordance with the Conditions of the Waste Licence and promote continual environmental improvement	Review training schedule of each staff member and identify training needs including SOP's.	EHS Manager	On-going
			Continue programme of regular inspections to include storm water sampling.	EHS Manager	On-going
			Continue to maintain the appropriate records at the facility in accordance with Condition 11 of the facility Waste Licence	EHS Manager	On-going
3	Water/Oil	Prevent surface water contamination	Ensure that all gullies are maintained and regularly cleaned.	EHS Manager	On-going
			Pipe and Bund integrity testing to be carried out.	EHS Manager	May – 2014

4	Resource use and energy efficiency.	Upgrade lighting throughout facility in order to create greater energy efficiency facility.	Installation of energy efficient lighting throughout facility to be conducted by contractor.	Facility Manager.	May - 2014
5	Material Quality	Ensure that all containers leaving the site have been loaded accordingly and that the material therein conforms to specified quality standards.	Retrain all relevant staff on the importance of picking material correctly.	Facility Manager	June-2014
			Clean all light bulbs and covers in so there is sufficient lighting for personnel to assess incoming waste.	EHS Manager	May – 2014
6	Traffic Management	Achieve organised, efficient and safe movement of cars, trucks and machinery on site minimising noise and emissions.	Reapply site road markings.	EHS Manager /Facility Manager.	August-2014
7	Public Relations	Minimisation of Complaints.	Effectively deal with complaints	EHS Manager	On-going
			Maintain a high standard of housekeeping practises at the facility to minimise the number of complaints.	EHS Manager	On-going
8	Public Awareness	To educate the public in the importance of recycling and the environment.	Presentations will be provided in the facility for all types of groups. The presentation will set out to educate people about the work carried out on site and the importance of recycling for the environment.	EHS Manager	On-going
9	Fire Detection	To reduce the risk from fire within the facility.	New “Air Sampling & Flame Detection” system to be installed throughout whole facility.	Plant / EHS Managers	March 2014

3.1 Summary of Reported Incidents and Complaints

3.1.1 Reported Incidents Summary

There were no incidents during the reporting period 01st January to 31st December 2013.

3.1.2 Complaints

There were no complaints during the reporting period 01st January to 31st December 2013.

3.2 Review of Nuisance Controls

3.2.1 Odour

There is minimal risk of odour nuisance due to the nature of the waste accepted at the facility. However, IPR's in house roadsweeper cleans the concreted yard routinely throughout the day. Material is turned over in a timely fashion.

3.2.2 Noise

The monitoring results showed that noise is not a nuisance.

3.2.3 Vermin

A file on vermin control is maintained in the office. A sub-contractor is used to control any vermin on site.

3.2.4 Flies

Good housekeeping practices are used to prevent fly infestations. Fly Spraying is conducted inside the facility during the summer months on a weekly / bi-weekly basis by a sub-contractor.

3.2.5 Birds

In order to avoid having birds as a nuisance, litter control is practised at all times, this includes regular litter patrols. Birds are not attracted, due to the nature of the material handled on site.

3.2.6 Litter

A designated member of staff carries out litter inspections of the facility regularly and gathers any litter deposited. The yard is kept clean using a road sweeper

4.0 Development of Procedures on Site

The Environmental Management System has been developed and includes the following Standard Operating Procedure;

- Corrective Action;
- Daily Site Inspections;
- Nuisance Management;
- Emergency Response;
- Unacceptable Waste;
- Communications Programme;
- Storage of Fuels and Oils;
- Training and Awareness;
- Environmental Complaints;

A Daily Site Inspection Sheet has been developed to record any potential nuisance on or points to note.

5.0 Pollution Emission Register

After consulting the PERL list IPR MRF are not using any substance that is listed at present.

6.0 Report on Programme for Public Information

IPR have a shared website with their sister company Panda. The website was recently re-developed; one of the features is an Environmental page where the following can be downloaded,

- Facility licences (W0140-03, W0261-01, W0263-01, W0039-02, **W0238-01**)

- Multi-regional Waste collection permit (WCP-DC-09-1188-01),
- Environmental Policy,

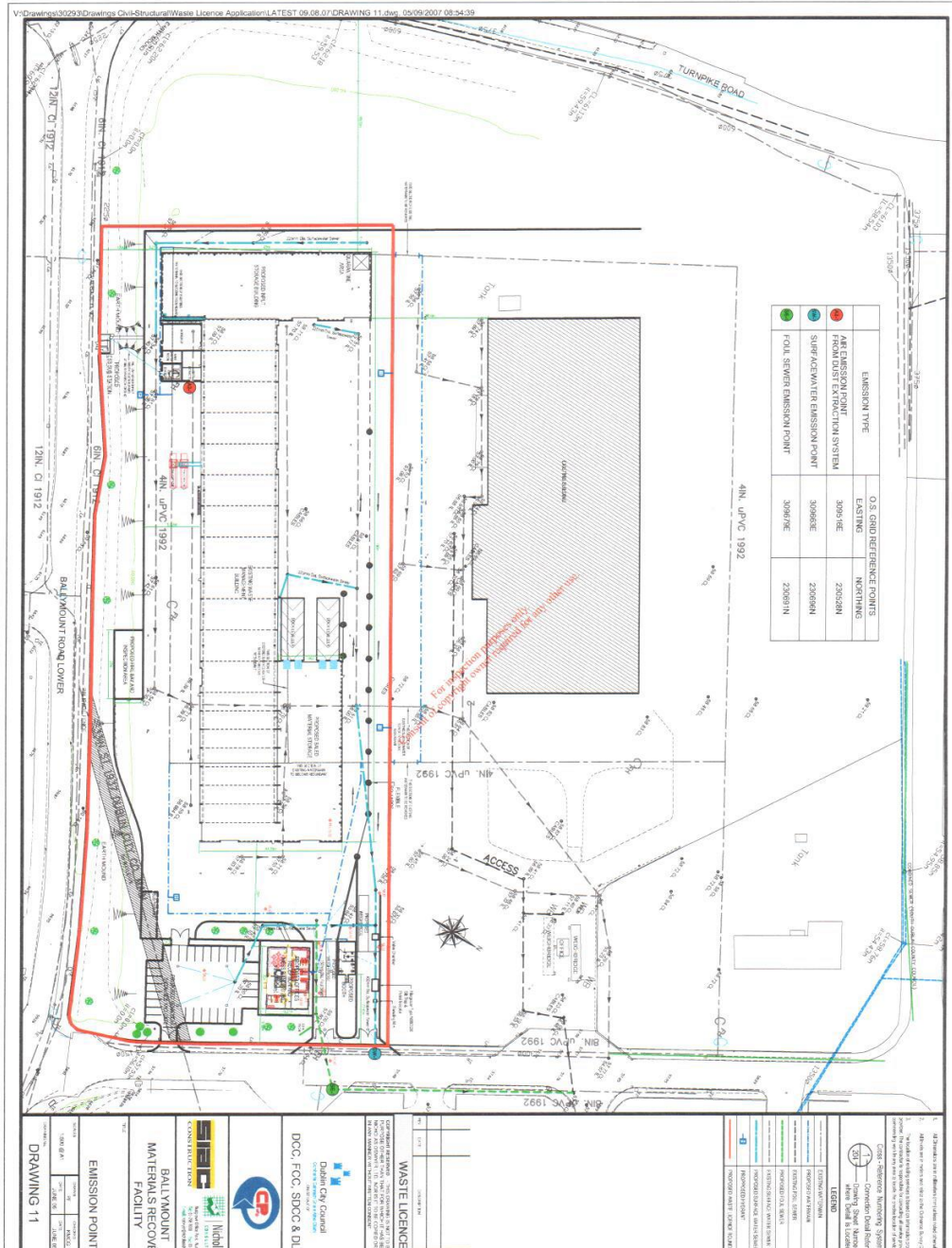
Recycling certificates are issued to customers, on request, so that they can determine their recycling on a monthly basis.

During the reporting period there were no requests from members of the public to inspect any Environmental Records.

The information in the Annual Environmental Report is true and accurate representation of the activities conducted by IPR in 2013.

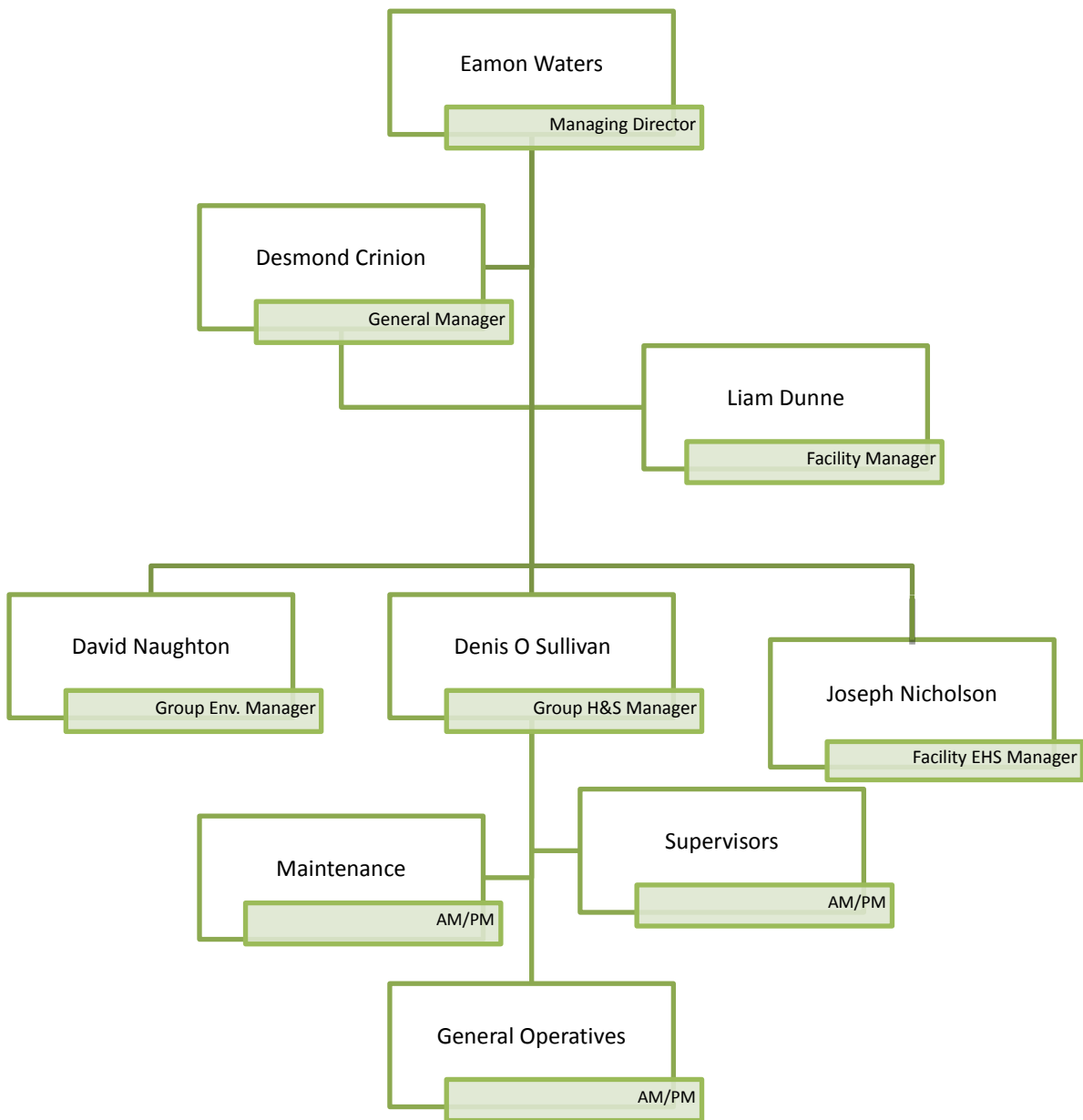
Appendix A

Site Layout



Appendix B

Organisational Structure



Appendix C

Financial Statement



Fagan Lynch Donnellan
Chartered Accountants & Registered Auditors

Our Ref: VL/NMcK

08th January 2014

Environmental Protection Agency,
McCumiskey House,
Richview,
Clonskeagh Road,
Dublin 14.

Re: Irish Packaging Recycling Limited

Dear Sir,

We act as Accountants and Taxation Agents for the above and have acted in this capacity in excess of 7 years.

We wish to confirm as follows:

1. Statutory Accounts have been filed for all years up to 31.12.2012 with the Companies Office.

Accounts and Tax Returns have also been filed with Inspector of Taxes for all years to 31st December 2012.

2. The Company trades profitably and is on a very sound financial footing.

If you have any queries, please do not hesitate to contact us.

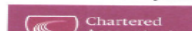
Yours faithfully,


FAGAN LYNCH DONNELLAN

Newbridge House, Athlumney, Navan, Co. Meath
Tel: (046) 9033700 Fax: (046) 9029341 e-mail: info@fld.ie www.fld.ie

John Fagan FCA Vincent Lynch FCA Mark McCartney FCCA

Registered to carry on audit work and authorised to carry on investment business by the Institute of Chartered Accountants in Ireland (ICAI).
Chartered Accountants Ireland is the operating name of ICAI.



Appendix D

PRTR Emissions



[PRTR#: W0238 | Facility Name : Ballymount MRF (Merrywell) | Filename : prtr W0238_2013.xls | Return Year : 2013 |

26/03/2014

[Guidance to completing the PRTR workbook](#)

AER Returns Workbook

Version 1.1:17

REFERENCE YEAR	2013
-----------------------	------

1. FACILITY IDENTIFICATION

Parent Company Name	Dublin City Council
Facility Name	Ballymount MRF (Merrywell)
PRTR Identification Number	W0238
Licence Number	W0238-01

Waste or IPPC Classes of Activity	class_name
4.2	Recycling or reclamation of organic substances which are not used as solvents (including composting and other biological transformation processes).
3.12	Repackaging prior to submission to any activity referred to in a preceding paragraph of this Schedule.
3.13	Storage prior to submission to any activity referred to in a preceding paragraph of this Schedule, other than temporary storage, pending collection, on the premises where the waste concerned is produced.
4.13	Storage of waste intended for submission to any activity referred to in a preceding paragraph of this Schedule, other than temporary storage, pending collection, on the premises where such waste is produced.
4.3	Recycling or reclamation of metals and metal compounds.
4.4	Recycling or reclamation of other inorganic materials.
Address 1	Merrywell Industrial Estate
Address 2	Ballymount Road Lower
Address 3	Ballymount
Address 4	Dublin 12
	Dublin
Country	Ireland
Coordinates of Location	-6.35671 53.3145
River Basin District	IIEA
NACE Code	2314
Main Economic Activity	Manufacture of glass fibres
AER Returns Contact Name	Joseph Nicholson
AER Returns Contact Email Address	joe.nicholson@ipr.ie
AER Returns Contact Position	EHS Manager
AER Returns Contact Telephone Number	01 4602011
AER Returns Contact Mobile Phone Number	086 022 6109
AER Returns Contact Fax Number	01 4602210
Production Volume	0.0
Production Volume Units	
Number of Installations	0
Number of Operating Hours in Year	0
Number of Employees	80
User Feedback/Comments	
Web Address	

2. PRTR CLASS ACTIVITIES

Activity Number	Activity Name
50.1	General
5(c)	Installations for the disposal of non-hazardous waste
50.1	General

3. SOLVENTS REGULATIONS (S.I. No. 543 of 2002)

Is it applicable?	
Have you been granted an exemption?	
If applicable which activity class applies (as per Schedule 2 of the regulations)?	
Is the reduction scheme compliance route being used?	

4. WASTE IMPORTED/ACCEPTED ONTO SITE

[Guidance on waste imported/accepted onto site](#)

Do you import/accept waste onto your site for on-site treatment (either recovery or disposal activities)?	
-----------------------------------------------------------------------------------------------------------	--

This question is only applicable if you are an IPPC or Quarry site

4.1 RELEASES TO AIR

[Link to previous years emissions data](#)

| PRTR# : W0238 | Facility Name : Ballymount MRF (Merrywell) | Filename : prtr W0238_2013.xls | Return Year : 2013 |

26/03/2014 07:58

SECTION A : SECTOR SPECIFIC PRTR POLLUTANTS

RELEASES TO AIR					Please enter all quantities in this section in KGs			
POLLUTANT		METHOD			ADD EMISSION POINT	QUANTITY		
No. Annex II	Name	M/C/E	Method Code	Designation or Description	Emission Point 1	T (Total) KG/Year	A (Accidental) KG/Year	F (Fugitive) KG/Year
						0.0	0.0	0.0

ADD NEW ROW | DELETE ROW * | * Select a row by double-clicking on the Pollutant Name (Column B) then click the delete button

SECTION B : REMAINING PRTR POLLUTANTS

RELEASES TO AIR					Please enter all quantities in this section in KGs			
POLLUTANT		METHOD			ADD EMISSION POINT	QUANTITY		
No. Annex II	Name	M/C/E	Method Code	Designation or Description	Emission Point 1	T (Total) KG/Year	A (Accidental) KG/Year	F (Fugitive) KG/Year
						0.0	0.0	0.0

ADD NEW ROW | DELETE ROW * | * Select a row by double-clicking on the Pollutant Name (Column B) then click the delete button

SECTION C : REMAINING POLLUTANT EMISSIONS (As required in your Licence)

RELEASES TO AIR					Please enter all quantities in this section in KGs			
POLLUTANT		METHOD			ADD EMISSION POINT	QUANTITY		
Pollutant No.	Name	M/C/E	Method Code	Designation or Description	Emission Point 1	T (Total) KG/Year	A (Accidental) KG/Year	F (Fugitive) KG/Year
						0.0	0.0	0.0

ADD NEW ROW | DELETE ROW * | * Select a row by double-clicking on the Pollutant Name (Column B) then click the delete button

Additional Data Requested from Landfill operators

For the purposes of the National Inventory on Greenhouse Gases, landfill operators are requested to provide summary data on landfill gas (Methane) flared or utilised on their facilities to accompany the figures for total methane generated. Operators should only report their Net methane (CH4) emission to the environment under T(total) KG/yr for Section A: Sector specific PRTR pollutants above. Please complete the table below:

Landfill:

Ballymount MRF (Merrywell)

Please enter summary data on the quantities of methane flared and / or utilised

	T (Total) kg/Year	M/C/E	Method Used		Facility Total Capacity m3 per hour
			Method Code	Designation or Description	
Total estimated methane generation (as per site model)	0.0				N/A
Methane flared	0.0				0.0 (Total Flaring Capacity)
Methane utilised in engine/s	0.0				0.0 (Total Utilising Capacity)
Net methane emission (as reported in Section A above)	0.0				N/A



Annual Environmental Report

Author: Joseph Nicholson

4.2 RELEASES TO WATERS

[Link to previous years emissions data](#)

PRTR#: W0238 | Facility Name: Ballymount MRF (Merrywell) | Filename: prtr W0238_2013.xls | Return Year: 2013 |

26/03/2014 07:58

SECTION A : SECTOR SPECIFIC PRTR POLLUTANTS

Data on ambient monitoring of storm/surface water or groundwater, conducted as part of your licence requirements, should NOT be submitted under AER / PRTR Reporting as this only concerns Releases from your facility

RELEASES TO WATERS					Please enter all quantities in this section in KGs			
POLLUTANT					ADD EMISSION POINT	QUANTITY		
No. Annex II	Name	M/C/E	Method Used		Emission Point 1	T (Total) KG/Year	A (Accidental) KG/Year	F (Fugitive) KG/Year
		Method Code	Designation or Description					
					0.0	0.0	0.0	0.0

ADD NEW ROW DELETE ROW * * Select a row by double-clicking on the Pollutant Name (Column B) then click the delete button

SECTION B : REMAINING PRTR POLLUTANTS

RELEASES TO WATERS					Please enter all quantities in this section in KGs			
POLLUTANT					ADD EMISSION POINT	QUANTITY		
No. Annex II	Name	M/C/E	Method Used		Emission Point 1	T (Total) KG/Year	A (Accidental) KG/Year	F (Fugitive) KG/Year
		Method Code	Designation or Description					
					0.0	0.0	0.0	0.0

ADD NEW ROW DELETE ROW * * Select a row by double-clicking on the Pollutant Name (Column B) then click the delete button

SECTION C : REMAINING POLLUTANT EMISSIONS (as required in your Licence)

RELEASES TO WATERS					Please enter all quantities in this section in KGs			
POLLUTANT					ADD EMISSION POINT	QUANTITY		
Pollutant No.	Name	M/C/E	Method Used		Emission Point 1	T (Total) KG/Year	A (Accidental) KG/Year	F (Fugitive) KG/Year
		Method Code	Designation or Description					
					0.0	0.0	0.0	0.0

ADD NEW ROW DELETE ROW * * Select a row by double-clicking on the Pollutant Name (Column B) then click the delete button

4.3 RELEASES TO WASTEWATER OR SEWER

[Link to previous years emissions data](#)

| PRTR#: W0238 | Facility Name: Ballymount MRF (Merrywell) | Filename: prtr W0238_2013.xls 26/03/2014 07:58

SECTION A : PRTR POLLUTANTS

OFFSITE TRANSFER OF POLLUTANTS DESTINED FOR WASTE-WATER TREATMENT OR SEWER					Please enter all quantities in this section in KGs			
POLLUTANT		METHOD			ADD EMISSION POINT	QUANTITY		
No. Annex II	Name	M/C/E	Method Used		Emission Point 1	T (Total) KG/Year	A (Accidental) KG/Year	F (Fugitive) KG/Year
			Method Code	Designation or Description				
					0.0	0.0	0.0	0.0
ADD NEW ROW		DELETE ROW *			* Select a row by double-clicking on the Pollutant Name (Column B) then click the delete button			

SECTION B : REMAINING POLLUTANT EMISSIONS (as required in your Licence)

OFFSITE TRANSFER OF POLLUTANTS DESTINED FOR WASTE-WATER TREATMENT OR SEWER					Please enter all quantities in this section in KGs			
POLLUTANT		METHOD			ADD EMISSION POINT	QUANTITY		
Pollutant No.	Name	M/C/E	Method Used		Emission Point 1	T (Total) KG/Year	A (Accidental) KG/Year	F (Fugitive) KG/Year
			Method Code	Designation or Description				
					0.0	0.0	0.0	0.0
ADD NEW ROW		DELETE ROW *			* Select a row by double-clicking on the Pollutant Name (Column B) then click the delete button			



4.4 RELEASES TO LAND

[Link to previous years emissions data](#)

| PRTR#: W0238 | Facility Name : Ballymount MRF (Merrywell) | Filename : prtr W0238_2013.xls | Return Year : 2013 |

26/03/2014 07:58

SECTION A : PRTR POLLUTANTS

RELEASES TO LAND					Please enter all quantities in this section in KGs		
POLLUTANT		METHOD			ADD EMISSION POINT	QUANTITY	
No. Annex II	Name	M/C/E	Method Used		Emission Point 1	T (Total) KG/Year	A (Accidental) KG/Year
			Method Code	Designation or Description			
					0.0	0.0	0.0
ADD NEW ROW		DELETE ROW *		* Select a row by double-clicking on the Pollutant Name (Column B) then click the delete button			

SECTION B : REMAINING POLLUTANT EMISSIONS (as required in your Licence)

RELEASES TO LAND					Please enter all quantities in this section in KGs		
POLLUTANT		METHOD			ADD EMISSION POINT	QUANTITY	
Pollutant No.	Name	M/C/E	Method Used		Emission Point 1	T (Total) KG/Year	A (Accidental) KG/Year
			Method Code	Designation or Description			
					0.0	0.0	0.0
ADD NEW ROW		DELETE ROW *		* Select a row by double-clicking on the Pollutant Name (Column B) then click the delete button			

5. ONSITE TREATMENT & OFFSITE TRANSFERS OF WASTE | PRTR#: W0238 | Facility Name : Ballymount MRF (Merryw ell) | Filename : prtr W0238_2013.xls | Return Year : 2013 |

Please enter all quantities on this sheet in Tonnes

Transfer Destination	European Waste Code	Hazardous	Quantity (Tonnes per Year)	Description of Waste	Waste Treatment Operation	Method Used		Location of Treatment	Haz Waste : Name and Licence/Permit No of Next Destination Facility Non Haz Waste: Name and Licence/Permit No of Recover/Disposer	Haz Waste : Address of Next Destination Facility Non Haz Waste: Address of Recover/Disposer	Name and License / Permit No. and Address of Final Recoverer / Disposer (HAZARDOUS WASTE ONLY)	Actual Address of Final Destination i.e. Final Recovery / Disposal Site (HAZARDOUS WASTE ONLY)
						M/C/E	Method Used					
To Other Countries	15 01 01	No	1319.7	paper and cardboard packaging	R12	M	Weighed	Abroad	Aganail Ltd.,Broker	88 Cherrywood Crescent, Clondalkin, Dublin 22,, Ireland 29 Rue d'Astorg, 75008, Paris,, Franc e		
To Other Countries	15 01 01	No	250.8	paper and cardboard packaging	R12	M	Weighed	Abroad	Anton B Nilson, Broker	Farm Road, Ubrnit 7 Capricorn Centre Cranes , Basildon, SS143JA, United Kingdom		
To Other Countries	15 01 01	No	125.6	paper and cardboard packaging	R12	M	Weighed	Abroad	Cycle Link U.S.A, Broker	12, The Triangle, Nottingham, NG2		
To Other Countries	15 01 01	No	6425.5	paper and cardboard packaging	R12	M	Weighed	Abroad	Mark Lydon Papers, Broker	1AE, United Kingdom 7 Glyntown		
To Other Countries	15 01 01	No	504.68	paper and cardboard packaging	R12	M	Weighed	Abroad	Marwin Environmental Trading Ltd., Broker	Heights, Glanmire, Co. Cork,, Ireland Wilmslow road, Adamson house Towers business park,, Manchester, M20 2YY, United Kingdom		
To Other Countries	15 01 01	No	23890.04	paper and cardboard packaging	R12	M	Weighed	Abroad	MLM Ltd., Broker	Baanhoekweg 4, 3313 La Dordrecht,, , Netherlands		
To Other Countries	15 01 01	No	751.18	paper and cardboard packaging	R12	M	Weighed	Abroad	Peute Papier Recycling , Broker	543 Hythe Lane, Larkfield Aylesford, Kent, M320 7PE, United Kingdom		
To Other Countries	15 01 01	No	139.5	paper and cardboard packaging	R12	M	Weighed	Abroad	Sca Recycling, Broker	43 Zhongxing west road, Loushe town Huishan District, Wuxi Longchem Paper Co Ltd, Jiangsu, China		
To Other Countries	15 01 01	No	1357.5	paper and cardboard packaging	R12	M	Weighed	Abroad	Wuxi Longchem Paper Co Ltd.,	Zhongsan Sugar Factory, Huangpu Town, Zhongsan City,, , China		
To Other Countries	15 01 01	No	650.8	paper and cardboard packaging	R12	M	Weighed	Abroad	Zhongsan Yongfa Paper Industries Co. Ltd.,	Swaffhem road, 47, Burwell Cambridgeshire, CB25 OAN, United Kingdom		
To Other Countries	15 01 01	No	2325.62	paper and cardboard packaging	R12	M	Weighed	Abroad	Boost Recycling Ltd. UK, Broker			

To Other Countries	15 01 02	No	134.76 Plastic Packaging	R12	M	Weighed	Abroad	Alternative Waste Solutions Ltd.,Broker (on behalf of Eco Plastics EA/WML/73274)	Unit 2 Britannia Business Park Point Pleasant Industrial Estate.,Wallsend Tyne and Wear,Wallsend,NE 28 GHA,United Kingdom Suite 5,30 Lancaster Gate,London,W2
To Other Countries	15 01 02	No	593.18 Plastic Packaging	R12	M	Weighed	Abroad	Asia Global Trade,Broker	3LP,United Kingdom Swaffhem road,47,Burwell Cambridgeshire,CB25
To Other Countries	15 01 02	No	626.46 Plastic Packaging	R12	M	Weighed	Abroad	Boost Recycling Ltd. UK,Broker	OAN,United Kingdom Cynar House ,Clonminam
Within the Country	15 01 02	No	9.96 Plastic Packaging	R12	M	Weighed	Offsite in Ireland	Cynar Recycling,WFP-LS-09-0005-01	Ind. Est.,Portlaoise Co. Laois,,Ireland 96 Toft Hill,Bishop Auckland,Durham,DL14
To Other Countries	15 01 02	No	274.88 Plastic Packaging	R12	M	Weighed	Abroad	GFSL Ltd,Broker	OJA,United Kingdom Hardwick Road Astmoor Ind.Est Rancorn Cheshire WA7
To Other Countries	15 01 02	No	65.08 Plastic Packaging	R12	M	Weighed	Abroad	JFC Manufacturing,EA/WML/100 0/01	1PH,Rancorn,Cheshire,WA71 PH,United Kingdom scilly,kipper
To Other Countries	15 01 02	No	164.88 Plastic Packaging	R12	M	Weighed	Abroad	Materia Environment Ltd,Broker	house,kinsale,co.cork,ireland
To Other Countries	15 01 02	No	144.86 Plastic Packaging	R12	M	Weighed	Abroad	MLM Ltd.,Broker	Wilmslov road,Adamson house Towers business park.,Manchester,M20 2YY,United Kingdom Rushden road,Sharnbrook,Bedfordshire,MK44 1ND,United Kingdom
To Other Countries	15 01 02	No	573.1 Plastic Packaging	R12	M	Weighed	Abroad	Monoworld Ltd.,EAWML75205	807 McKenny Centre ,660 Castle Park Road ,Kowloon Hong Kong,,China
To Other Countries	15 01 02	No	22.88 Plastic Packaging	R12	M	Weighed	Abroad	Vanden Globel Ltd,Broker	
To Other Countries	15 01 02	No	1697.04 Plastic Packaging	R12	M	Weighed	Abroad	WRC Recycling ,Broker	Auchans Farm.,Johnstone ,Renfrewshire Glasgow,PA6 7EE,United Kingdom 88 Cherrywood Cresent,Clondalkin,Dublin 22.,Ireland
To Other Countries	15 01 04	No	66.78 metallic packaging	R12	M	Weighed	Abroad	Aganail Ltd.,Broker	96 Toft Hill,Bishop Auckland,Durham,DL14
To Other Countries	15 01 04	No	88.42 metallic packaging	R12	M	Weighed	Abroad	GFSL Ltd,Broker	OJA,United Kingdom

Within the Country	15 01 04	No	34.56 metallic packaging	R12	M	Weighed	Offsite in Ireland	Green Dragon Recycling Ltd.,WFP-CK-10-0060-02	Corbally North Glanmire Co Cork Ireland,Glanmire,Co. Cork,,Ireland
To Other Countries	15 01 04	No	82.34 metallic packaging	R12	M	Weighed	Abroad	Monoworld Ltd.,Broker	Rushden road,Sharnbrook,Bedfordshire,MK44 1ND,United Kingdom
Within the Country	15 01 04	No	1616.96 metallic packaging	R12	M	Weighed	Offsite in Ireland	Wilton Waste Recycling Ltd.,WFP CN-10-000-5-01(1)	Crosserlough,Ballyjamesduff ,Co.Cavan,,Ireland
To Other Countries	15 01 04	No	21.92 metallic packaging	R12	M	Weighed	Abroad	WRC Recycling ,Broker	Auchans Farm,Johnstone ,Renfrewshire Glasgow,PA6 7EE,United Kingdom
Within the Country	19 12 12	No	1200.6 other wastes (including mixtures of materials) from mechanical treatment of wastes other than those mentioned in 12 11	R12	M	Weighed	Offsite in Ireland	Panda Waste Services,W0140-03	Beuparc Business Park,Navan,Co.Meath,,Ireland
Within the Country	19 12 12	No	92.7 other wastes (including mixtures of materials) from mechanical treatment of wastes other than those mentioned in 12 11	R12	M	Weighed	Offsite in Ireland	Gloine Environmental Ltd.,Broker	136 a Slaney Close ,Dublin Industrial Estate ,Glasnevin,Dublin 11,Ireland
Within the Country	19 12 08	No	4.24 textiles	R12	M	Weighed	Offsite in Ireland	Textile Recycling Ltd.,WCP-DC-08-1225-01	504 A Grants Drive,Greenouge Business Park,Greenouge Industrial Estate,Dublin 24,Ireland
Within the Country	20 01 36	No	2.98 discarded electrical and electronic equipment other than those mentioned in 20 01 21, 20 01 23 and 20 01 35	R12	M	Weighed	Offsite in Ireland	Clondalkin Community Recycling Initiative Ltd,WCPDC08114001	Unit 14 Crag Terrace ,Clondalkin Industrial Estate,Clondalkin,Dublin 22,Ireland
Within the Country	20 03 01	No	114.28 mixed municipal waste	R12	M	Weighed	Offsite in Ireland	Dillon Waste & Recycling ,WFP-KY-10-001	The Kerries,Tralee,Co. Kerry,,Ireland
Within the Country	20 03 01	No	85.52 mixed municipal waste	R12	M	Weighed	Offsite in Ireland	Eco Exports,Eco Exports (brokered on behalf of KWD WCP-LK-10-637-01)	Aughacureen ,Killarney Co. Kerry,,Ireland
Within the Country	20 03 01	No	130.74 mixed municipal waste	R12	M	Weighed	Offsite in Ireland	Killarney Waste Disposal,W0217-01	Aughacureen,Killarney ,Kerry,,Ireland
Within the Country	20 03 01	No	6585.42 mixed municipal waste	R12	M	Weighed	Offsite in Ireland	Panda Waste Services,W0140-03	Beuparc Business Park,Navan,Co.Meath,,Ireland
Within the Country	20 03 01	No	152.68 mixed municipal waste	R12	M	Weighed	Offsite in Ireland	Thorntons Recycling (MDR) Facility,WFP-DC-10-0021-02	Unit 51 Henry road,Parkwest Business Park,Dublin 12,,Ireland
Within the Country	20 03 01	No	877.93 mixed municipal waste	R12	M	Weighed	Offsite in Ireland	Panda Waste Services,W0039-02	Ballymount Cross,Tallaght,Dublin 24,,Ireland
Within the Country	20 03 01	No	1066.32 mixed municipal waste	R12	M	Weighed	Offsite in Ireland	Panda Waste Services,W0261-01	Cappagh road,Finglas ,,Dublin 11,Ireland
To Other Countries	20 03 01	No	14700.63 mixed municipal waste	R12	M	Weighed	Abroad	Re gen Waste Ltd.,WCP/MH/09/0014-01	Shepards drive,Carbane Industrial Estate,Newry.,Co.Down BT356 jQ,United Kingdom