

# PÁIRC ÁINEASA INIS SIONNACH LANDSCAPE MASTERPLAN

## PLANTING SCHEDULES

Table 1: Proposed grass mix

Amenity Grass Seeding	Sowing Rate
<b>Grass for general areas</b> (Colums Irish Premier Low Maintenance Mixture, as supplied by Coburns)	As per manufacturers instructions
20% Hard Fescue	
30% Strong Creeping Red Fescue	
15% Smooth Stalked Meadow Grass	
20% Chewings Fescue	
15% Brownton Plantgrass	
<b>Total Area:</b> 67365 m <sup>2</sup>	

Table 2: Proposed Ornamental and Native Planting

Common Name	Botanical Name	Transplanted/ Pot Size	Spacing m <sup>2</sup>	% Mix	Quantity
Hazel	<i>Corylus avellana</i>	1/1, 40-60cm, B, branched, 2 breaks	1m <sup>2</sup>	6	622
Holly	<i>Ilex aquifolium</i>	40-60cm, C, 3L, leaders and laterals	1m <sup>2</sup>	6	622
Hawthorn	<i>Crataegus monogyna</i>	1/1, 40-60cm, B	1m <sup>2</sup>	6	622
Wild Cherry	<i>Prunus avium</i>	1/1, 40-60cm, B	1m <sup>2</sup>	6	622
Blackthorn	<i>Prunus spinosa</i>	1/1, 40-60cm, B	1m <sup>2</sup>	6	622
Birch	<i>Betula pubescens</i>	1/1, 60-80cm, B	1m <sup>2</sup>	10	1037
Alder	<i>Alnus glutinosa</i>	1/1, 60-80cm, B	1m <sup>2</sup>	10	1037
Willow	<i>Salix caprea</i>	0/1, 60-80cm, B	1m <sup>2</sup>	20	2073
Alder	<i>Alnus glutinosa</i>	1/2, 100-125cm, B	1m <sup>2</sup>	10	1037
Downy Birch	<i>Betula pubescens</i>	1/2, 100-125cm, B	1m <sup>2</sup>	10	1037
Common Oak	<i>Quercus robur</i>	1/2, 100-125cm, B	1m <sup>2</sup>	10	1037

Table 3: Proposed Trees

Common Name	Botanical Name	Transplanted/ Pot Size	Spacing m <sup>2</sup>	Quantity
Common Alder	<i>Alnus glutinosa</i>	Semi Mature, 4x, 25-30cm girth, min 450 height, 5 breaks, RB	Planting as shown	40
Common Alder	<i>Alnus glutinosa</i>	Extra Heavy Standard, 3x, 18-20cm girth, min 450 height, 5 breaks, RB	Planting as shown	31
Downy Birch	<i>Betula pubescens</i>	Semi Mature, 4x, 25-30cm girth, min 450 height, 5 breaks, RB	Planting as shown	38
Downy Birch	<i>Betula pubescens</i>	Extra Heavy Standard, 3x, 18-20cm girth, min 450 height, 5 breaks, RB	Planting as shown	31
Rowan	<i>Sorbus aucuparia</i>	Extra Heavy Standard, 3x, 18-20cm girth, min 450 height, 5 breaks, RB	Planting as shown	6
Scots Pine	<i>Pinus sylvestris</i>	Semi Mature, 4x, 25-30cm girth, min 450 height, 5 breaks, RB	Planting as shown	44
Scots Pine	<i>Pinus sylvestris</i>	Extra Heavy Standard, 3x, 18-20cm girth, min 450 height, 5 breaks, RB	Planting as shown	27
Oak	<i>Quercus robur</i>	Semi Mature, 4x, 25-30cm girth, min 450 height, 5 breaks, RB	Planting as shown	60
Oak	<i>Quercus robur</i>	Extra Heavy Standard, 3x, 18-20cm girth, min 450 height, 5 breaks, RB	Planting as shown	49
Caucasian Lime	<i>Tilia x euchlora</i>	Extra Heavy Standard, 3x, 18-20cm girth, min 450 height, 5 breaks, RB	Planting as shown	11

Table 4: Proposed Wetland Mix

Common Name	Botanical Name	Form	Sowing Rate	% Mix
Creeping Bent	<i>Agrostis stolonifera</i>	Seed		6
Yorkshire Fox	<i>Holcus lanatus</i>	Seed		7
Tufted Hair-grass	<i>Deschampsia cespitosa</i>	Seed		7
Common Bent	<i>Agrostis capillaris</i>	Seed		6
Meadow Fescue	<i>Festuca ovina</i>	Seed		7
Smooth Vernal-grass	<i>Arrhenatherum odoratum</i>	Seed		7
Red Fescue	<i>Festuca rubra</i>	Seed		6
Meadow Buttercup	<i>Ranunculus acris</i>	Seed	As per manufacturers instructions	6
Downy Bit Scabious	<i>Succisa pratensis</i>	Seed		6
Ragwort	<i>Lychnis viscaria</i>	Seed		6
Greater Bird-foot Trefoil	<i>Lotus pedunculatus</i>	Seed		6
Yellow Iris	<i>Iris pseudacorus</i>	Seed		6
Water Avens	<i>Galeum officinale</i>	Seed		6
Meadowweet	<i>Filipendula ulmaria</i>	Seed		6
Square-stalked St John's-wort	<i>Hypericum tetrapetrum</i>	Seed		6
Fleabane	<i>Pulicaria dysenterica</i>	Seed		6

Table 5: Proposed Hedge Mix

Common Name	Botanical Name	Transplanted/ Pot Size	Spacing m <sup>2</sup>	Quantity
Hedge to car park 52 linear m				
Hawthorn	<i>Crataegus monogyna</i>	1/1, 60-80cm, B	45cm double staggered	231

Table 6: Proposed Native Scrub Planting

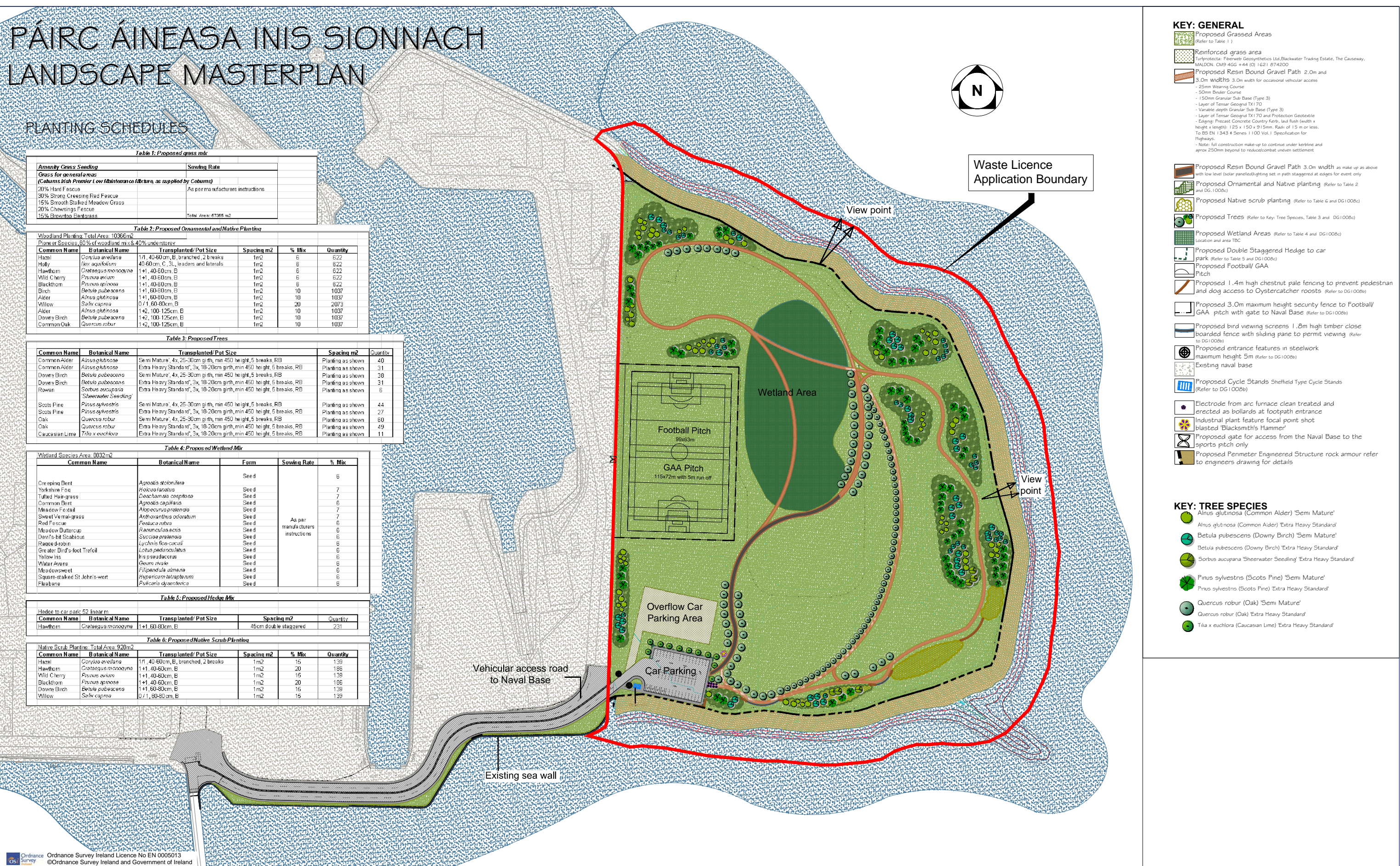
Common Name	Botanical Name	Transplanted/ Pot Size	Spacing m <sup>2</sup>	% Mix	Quantity
Hazel	<i>Corylus avellana</i>	1/1, 40-60cm, B, branched, 2 breaks	1m <sup>2</sup>	15	139
Hawthorn	<i>Crataegus monogyna</i>	1/1, 40-60cm, B	1m <sup>2</sup>	20	186
Wild Cherry	<i>Prunus avium</i>	1/1, 40-60cm, B	1m <sup>2</sup>	15	139
Blackthorn	<i>Prunus spinosa</i>	1/1, 40-60cm, B	1m <sup>2</sup>	20	186
Downy Birch	<i>Betula pubescens</i>	1/1, 60-80cm, B	1m <sup>2</sup>	15	139
Willow	<i>Salix caprea</i>	0/1, 60-80cm, B	1m <sup>2</sup>	15	139

**KEY: GENERAL**

- Proposed Grassed Areas (Refer to Table 1)
- Reinforced grass area (Refer to Table 1)
- Proposed Resin Bound Gravel Path 2.0m and 3.0m widths 3.0m width for occasional vehicular access
- Proposed Resin Bound Gravel Path 3.0m width as make up as above with low level (solar panelled) lighting set in path staggered at edges for event only
- Proposed Ornamental and Native planting (Refer to Table 2 and DG 1008a)
- Proposed Native scrub planting (Refer to Table 6 and DG 1008a)
- Proposed Trees (Refer to Key: Tree Species, Table 3 and DG 1008a)
- Proposed Wetland Areas (Refer to Table 4 and DG 1008a)
- Proposed Double Staggered Hedge to car park (Refer to Table 5 and DG 1008a)
- Proposed Football/ GAA Pitch
- Proposed 1.4m high chestnut pale fencing to prevent pedestrian and dog access to Oystercatcher roosts (Refer to DG 1008a)
- Proposed 3.0m maximum height security fence to Football/ GAA pitch with gate to Naval Base (Refer to DG 1008a)
- Proposed bird viewing screens 1.8m high timber close boarded fence with sliding pane to permit viewing (Refer to DG 1008a)
- Proposed entrance features in steelwork maximum height 5m (Refer to DG 1008a)
- Existing naval base
- Proposed Cycle Stands Sheffield Type Cycle Stands (Refer to DG 1008a)
- Electrode from arc furnace clean treated and erected as bollards at footpath entrance
- Industrial plant feature focal point shot blasted 'Blacksmith's Hammer'
- Proposed gate for access from the Naval Base to the sports pitch only
- Proposed Perimeter Engineered Structure rock armour refer to engineers drawing for details

**KEY: TREE SPECIES**

- Alnus glutinosa* (Common Alder) 'Semi Mature'
- Alnus glutinosa* (Common Alder) 'Extra Heavy Standard'
- Betula pubescens* (Downy Birch) 'Semi Mature'
- Betula pubescens* (Downy Birch) 'Extra Heavy Standard'
- Sorbus aucuparia* 'Sheerwater Seedling' 'Extra Heavy Standard'
- Pinus sylvestris* (Scots Pine) 'Semi Mature'
- Pinus sylvestris* (Scots Pine) 'Extra Heavy Standard'
- Quercus robur* (Oak) 'Semi Mature'
- Quercus robur* (Oak) 'Extra Heavy Standard'
- Tilia x euchlora* (Caucasian Lime) 'Extra Heavy Standard'



**CORK COUNTY COUNCIL**

**General Notes**

- This drawing is the property of RPS Consulting Engineers, it is a confidential document and must not be copied, used, or its content divulged without prior written consent.
- All Levels refer to Ordnance Survey Datum, Malin Head.
- DO NOT SCALE, use figured dimensions only, if in doubt ask.
- Hard copies, dwf and pdf will form a controlled issue of the drawing. All other formats (dwg etc) are deemed to be an uncontrolled issue and any work carried out based on these files is at the recipients own risk. RPS will not accept any responsibility for any errors from the use of these files, either by human error by the recipient, listing of the un-dimensioned measurements, compatibility with the recipients software, and any errors arising when these files are used to aid the recipients drawing production, or setting out on site.

No.	Date	By	Check	Issue	App
F01	07.11.13	RH	ER	FINAL ISSUE	ER
A01	24.04.13	RH	ER	ISSUE FOR APPROVAL	ER
D02	Apr.'13	RH	ER	DRAFT ISSUE	ER
D01	Apr.'13	RH	ER	DRAFT ISSUE	ER
No.	Date	By	Check	Amendment / Issue	App

**RPS**

West Pier Business Campus  
Dun Laoghaire  
Co Dublin

T +353 1 4882900  
F +353 1 2835676  
W [www.rpsgroup.com/ireland](http://www.rpsgroup.com/ireland)  
E [ireland@rpsgroup.com](mailto:ireland@rpsgroup.com)

Drawn RH	Project	<b>EAST TIP REMEDIATION PROJECT</b>		
Checked ER				
Approved ER				
Date March 2013	Title	<b>POST REMEDIATION SITE LAYOUT PLAN</b>		
Scale NTS @ A1 1:2500 @ A3				
Job No. MCE0734	File Ref. MCE0734DG1008aF01.dwg	Drg. No. DG1008a	Rev. F01	

R:\MCE0734\_Haubowline Waste Sampling\8\_0 Drawings\DG\SERIES 1000 - WASTE LICENCE APPLICATION\MCE0734DG1008aF01.dwg

Ordnance Survey Ireland Licence No EN 0005013  
©Ordnance Survey Ireland and Government of Ireland