

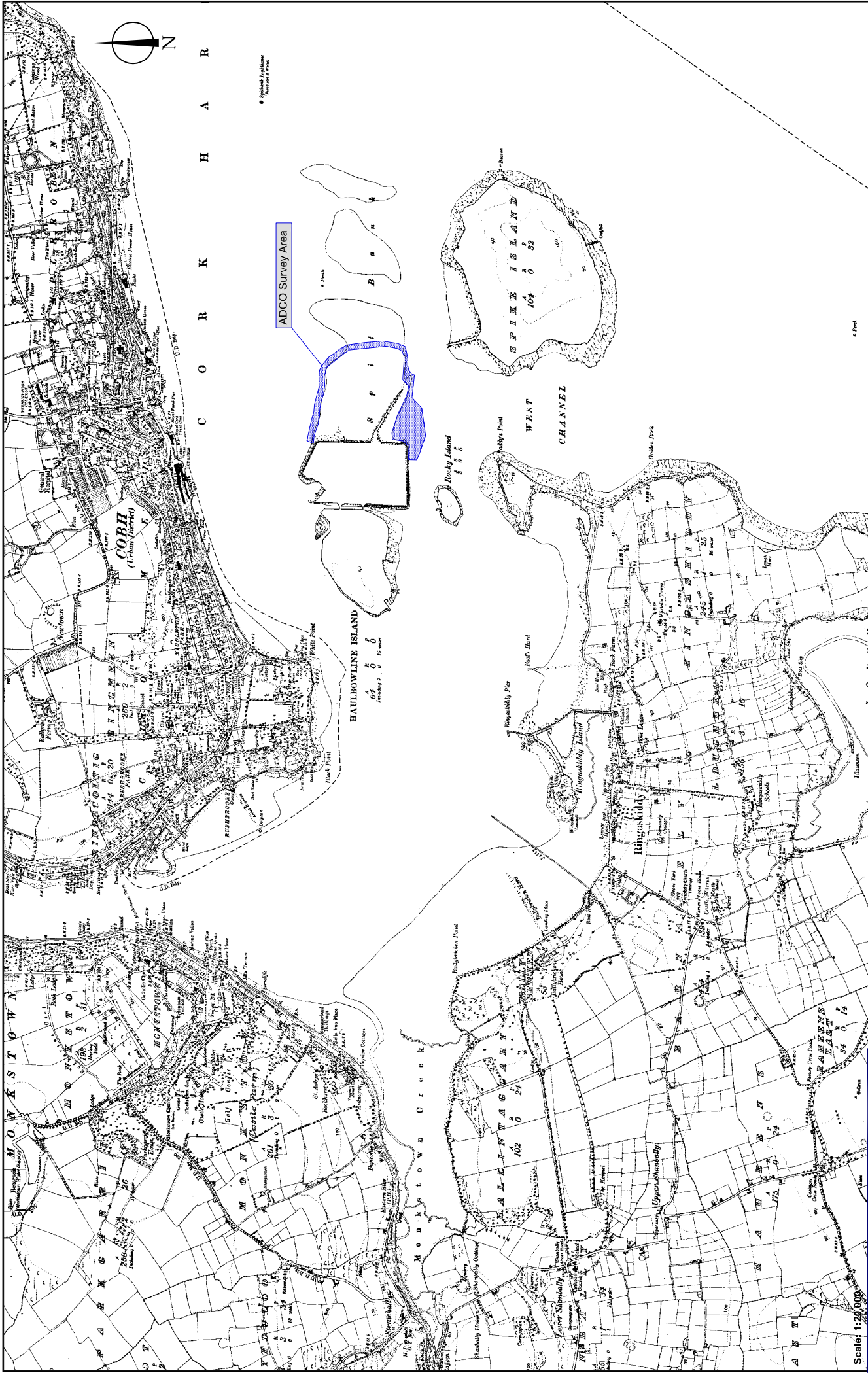
Remains of Causeway

**THE ARCHAEOLOGICAL DIVING COMPANY LTD.**  
 Tel. 056 4440236 email: info@adco-ie.com

**Notes**  
 Source (main): OS 1912 mapping, Cork Sheet 087  
 Source (thumbnail): S. Deeret after Painting by RL Stoppard, c.1870.

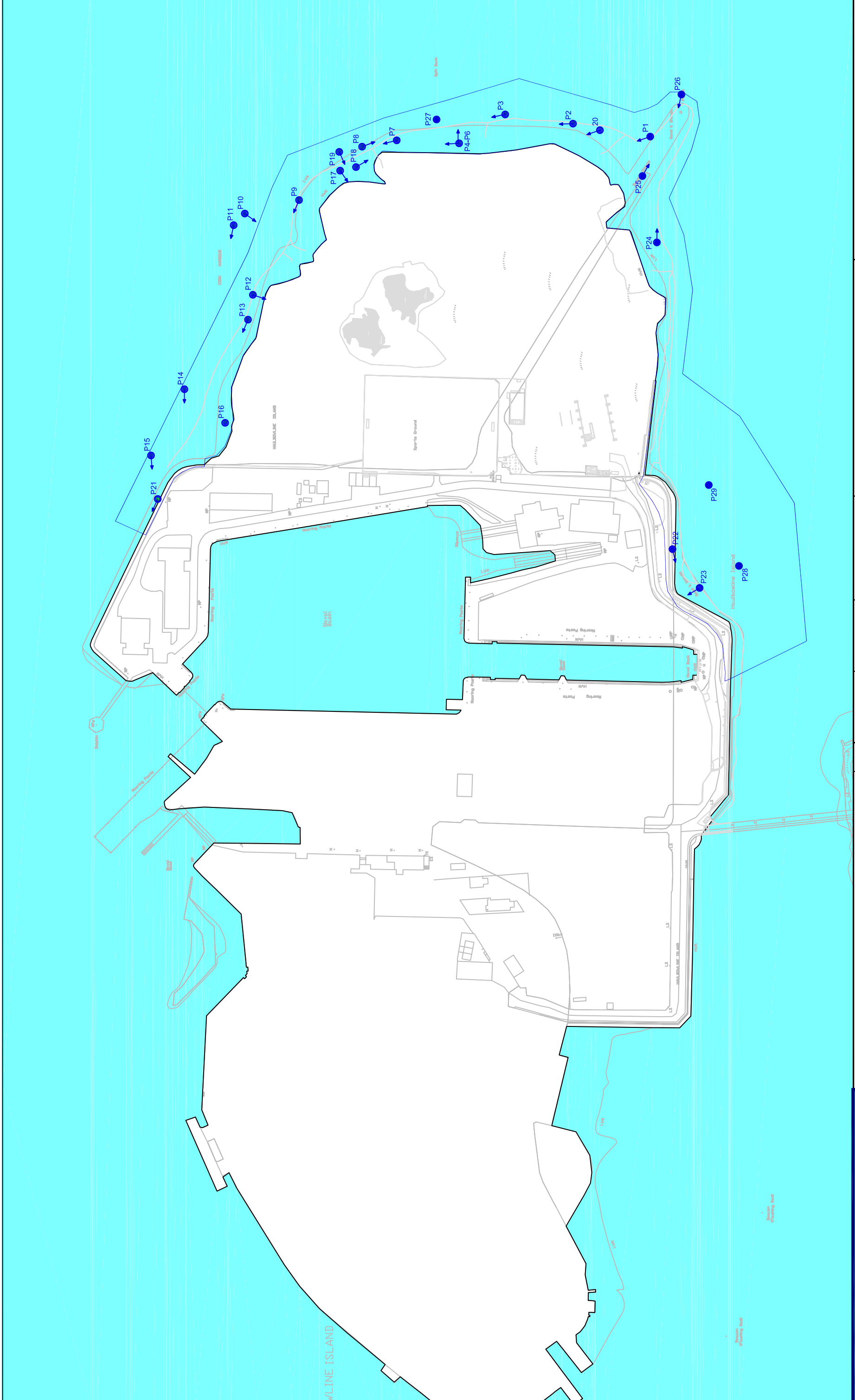
<b>A4</b>	<b>Job/Exc No.</b> 12D034	<b>Compiled by</b> R. Böhlinger	<b>Client</b> RPS Ltd./Cork County Council
<b>Date</b> 04.12.12	<b>Scale</b> 1:15,000	<b>CAD reference</b> Haulbowline Island	<b>Project</b> East Tip Remediation- Archaeological Assessment
		<b>Drawing No.</b> Figure 5	

**Title**  
 Figure 5-  
 Main: OS 1912 map showing remains of causeway between Haulbowline Island and Spike Island.  
 Thumbnail: View of Haulbowline (c. 1870) showing expansion of the naval dockyard.



<p><b>Notes</b>          Source: OS 1912 Edition Map, Cork Sheet 087          Approximate location of ADCO underwater/inter-tidal survey along the southern &amp; eastern sides of Haulbowline Island.</p>		<p><b>A4</b>          Job/Exc No. 12D034          Date 27.11.12</p>		<p><b>Compiled by</b>          R. Bannigan</p> <p><b>Scale</b>          1:20,000</p>		<p><b>CAD reference</b>          Haulbowline Island</p> <p><b>Drawing No.</b>          Figure 6</p>		<p><b>Client</b>          RPS Ltd./Cork County Council</p> <p><b>Project</b>          East Tip Remediation- Archaeological Assessment</p>		<p><b>Title</b>          Figure 6- Extract from OS Third Edition 1912 map Mapping (Cork, Sheet. 087) showing location of Haulbowline Island, Cork Harbour, with ADCO Survey Area superimposed.</p>	
--	--	---	--	--	--	---	--	---	--	--	--

**THE ARCHAEOLOGICAL DIVING COMPANY LTD.**  
 Tel. 056 4440236 email: info@adco-ie.com



<b>Notes</b> Figure Adapted from Project Drawing MCE0736DG001 and Drawing Base DG001a provided by RPS Ltd.	<b>Job/Exc No.</b> 12D034	<b>Compiled by</b> R.Banegter	<b>CAD reference</b> Haulbowline Island	<b>Client</b> RPS Ltd./ Cork County Council	<b>Title</b> Figure 7- OS Background mapping of Haulbowline Island, Cork Harbour, with ADCO Survey Area and Plate Locations superimposed.
	<b>Date</b> 27.11.12	<b>Scale</b> 1:3000	<b>Drawing No.</b> Figure 7	<b>Project</b> East Tip Remediation- Archaeological Assessment	

**THE ARCHAEOLOGICAL DIVING COMPANY LTD.**  
 Tel. 056 4440236 email: [info@adco-ie.com](mailto:info@adco-ie.com)

**APPENDIX Q**

**PEER REVIEW**



## **ENVIRONMENTAL IMPACT STATEMENT PEER REVIEW**

In February 2012 SKM Enviros (SKME) were appointed by Cork County Council from their Multi-Disciplinary Environmental Advisory Services in relation to the waste licensing and land remediation/reclamation project at Haulbowline Island, Co Cork. Under the scope of services relating to this framework agreement is the requirement to undertake peer review of a number of technical reports and studies carried out by other consultancy providers appointed by Cork CC under a parallel framework agreement.

In May 2012 Cork CC requested that SKME provide on-going technical peer review related services to assist in the delivery of an Environmental Impact Statement (EIS) and supporting information at the East Tip in order to progress towards assessment of potential remedial options to support remediation and reclamation of the site.

RPS has prepared an Environmental Impact Statement (EIS), which outlines the project description, the potential impacts and proposed mitigation measures for the remediation of the site. The EIS has been prepared in support of the various applications and in line with European and national legislation.

SKM Enviros have undertaken an independent technical review of the EIS and supporting documentation, which has included a review of the overall approach adopted and a review of work and methodologies employed against current relevant national and international best practice and guidance. Having completed our review we are in agreement with the methodologies applied, the report findings, and the conclusions and recommendations contained therein. It should be noted that in completing our review, factual information presented within the EIS has been taken at face value by SKM Enviros as being factually correct.

**For and on behalf of SKM Enviros**

**Mike McDonald**

**Project Manager**

**18th October 2013**